



Wind turbine gearbox operation monitoring using high-resolution distributed fiber-optic sensing

Linqing Luo¹, Unai Gutierrez Santiago^{2,3}, and Yuxin Wu¹

¹Earth and Environmental Sciences Area, Lawrence Berkeley National Laboratory, 1 Cyclotron Road,
MS 74R-316C, Berkeley, CA 94720, United States

²3mE, TU Delft, Mekelweg 2, 2628 CD, Delft, the Netherlands

³Siemens Gamesa Renewable Energy, Parque Tecnológico de Bizkaia, 48170 Zamudio, Spain

Correspondence: Linqing Luo (linqingluo@lbl.gov)

Received: 2 January 2025 – Discussion started: 21 February 2025

Revised: 20 May 2025 – Accepted: 19 June 2025 – Published: 1 September 2025

Abstract. Efficient gearbox monitoring is vital for improving fault detection, enhancing design, and reducing operation and maintenance (O&M) costs, particularly for offshore wind turbines. This paper introduces an innovative approach using high-resolution distributed fiber-optic sensing (DFOS) based on optical frequency domain reflectometry (OFDR) to measure gearbox strain in real time. By bonding a single optical fiber around the full circumference of the outer surface of a 2.152 m diameter ring gear of the first planetary stage in a 3.75 MW wind turbine gearbox, we measured circumferential strain from planetary gear passage every 2.6 mm around the ring gear under different input torque levels. Our results show accurate identification of planet gear locations in real time and rotation speed (10.42 revolutions per minute), with a strong linear correlation ($R^2 = 0.9997$) between applied torque and measured strain across all 2500 measured locations. Strain variations of approximately 200 microstrains were observed on the ring gear exterior from each (planet passage or planet–ring gear mesh) event, providing granular insights into mechanical behavior and load distribution. Additionally, DFOS also showed its potential for detecting temperature variations during operation, indicating its potential for concurrently monitoring thermal and mechanical anomalies. This study represents the first application of continuous DFOS to a full-scale wind turbine gearbox. The approach offers a scalable and practical solution for early fault detection and the support of design validation and, when combined with modeling, can lead to a more durable and optimized design.

1 Introduction

Wind energy is increasingly important worldwide, yet ensuring reliable operation remains challenging, especially offshore. Difficult access and harsh marine conditions significantly raise operation and maintenance (O&M) costs (Stehly and Duffy, 2021). Among several critical components, gearboxes have been observed to experience notable wear and failure (Haus et al., 2024; Peng et al., 2023).

The gearbox alone represents about 10 % of a wind turbine's total cost and is a leading contributor to downtime (Stehly and Duffy, 2021), resulting in expensive repairs and revenue losses due to periods of inactivity (Link et al., 2011).

These issues are even more pronounced in offshore wind turbines (OWTs) where limited access and adverse conditions complicate maintenance. Gearbox reliability is thus crucial as most units fail before reaching their 20-year design life (Haus et al., 2024; Musial et al., 2007; Sheng, 2013). Approximately 1 % to 2 % of gearboxes are replaced annually (Haus et al., 2024). Beyond direct repair costs, overheating due to bearing failures or lubricant degradation can cause severe damage, including turbine fires. In total, O&M expenses can account for nearly 30 % of the levelized cost of electricity (LCOE) (European Commission et al., 2017; Röckmann et al., 2017).

Research has shown that gearbox failures are dynamic (Carroll et al., 2019; Zheng, 2023) and often correlated with rolling-element failures (Rommel et al., 2021; Schmidt et al., 2019). The structural complexity of gearboxes and their continuous operation in harsh environments make them especially vulnerable (Guo et al., 2018; Huo et al., 2022). Additionally, the failure of each part in a gearbox is not independent, as the interaction of load and strength may affect each other and contribute to gearbox failure (Liu et al., 2022; Krause et al., 2022).

Currently, early-stage gearbox failures are often detected using CMS (condition monitoring system) signals, including abnormal temperature changes (Feng et al., 2013; Guo and Bai, 2011). Advanced techniques, such as combining spectral kurtosis analysis with hidden Markov models, can identify and classify emerging faults (Li et al., 2020). Additionally, the choice of preventive maintenance intervals affects both reliability and maintenance costs (Igba et al., 2015). While high-speed gears are relatively easy to monitor, planetary stages remain challenging due to their slower rotation and complex load paths to reach the location where the point-based detection tools are installed. For instance, damage in planetary bearings is difficult to detect using acoustic or vibration sensors placed on the ring gear's outer surface.

Existing monitoring techniques rely heavily on point-based sensors spaced sparsely around large gearboxes, which can exceed 1 m in diameter. These setups provide limited spatial coverage and struggle to identify small, localized defects (Keller et al., 2017; Rosinski and Smurthwaite, 2010). For instance, strain gauges, a common tool for strain measurement, offer highly localized data. Collecting multiple strain readings with these sensors complicates wire and data logger management, decreases reliability, and makes field applications impractical. Similarly, incremental encoders (Zhang et al., 2018) can detect relative movement changes but need frequent recalibration and complex analysis, which is particularly problematic in offshore settings.

Fiber Bragg grating (FBG) sensors have emerged as an alternative, but they measure only discrete points – usually 10–20 per fiber. For comprehensive coverage of a large gearbox, several fibers and many sensing points are needed, increasing complexity and installation effort. Although Gutierrez Santiago et al. (2022) showed that FBG sensors could be applied to gearbox monitoring, the limited sensing points and the need for precise sensor placement remain drawbacks. For example, 4 individual optical fibers with 14 gratings at each fiber were installed to provide at least 56 points for monitoring purposes. Installing 4 optical fibers and 56 sensing points at predetermined locations was a challenge due to the large effort required for location control of each fiber grating for matching sensing locations to the desired surface place.

To overcome these limitations, this study proposes using distributed fiber-optic sensing (DFOS) to measure strain every few millimeters around the entire gearbox circumference. By attaching a single standard optical fiber directly onto the

gearbox surface, DFOS provides widespread, detailed measurements without the intricate installation design required by point-based sensors. The installation process is straightforward and does not demand specialized training. With its high-density data and simple setup, DFOS delivers a practical, scalable solution for early fault detection and load prediction in wind turbine gearboxes and other large industrial equipment.

This paper describes the methodology of using DFOS for gearbox monitoring and demonstrates the data analysis method for interpreting the gearbox operations. We validate the approach through a laboratory load test on a full-scale wind turbine gearbox using a back-to-back test bench. The results confirm that DFOS not only offers high-resolution strain data with the potential for detecting anomalies but also reliably estimates gearbox load. This advancement paves the way for more effective and cost-efficient condition monitoring across the wind industry.

2 Gearbox and distributed fiber-optic sensor

2.1 Wind turbine gearboxes

Wind turbine drivetrains are classified into two main types: direct-drive and geared systems. In direct-drive configurations, the rotor is directly connected to a low-speed generator. In contrast, geared systems use a gearbox to increase the rotational speed of the rotor before transferring energy to a medium- or high-speed generator. Both configurations are used by manufacturers, but recent studies suggest that geared drivetrains may provide a lower LCOE for future large offshore turbines exceeding 15 MW (Barter et al., 2023). A gearbox is a mechanical system that bridges the low-speed rotor shaft and the high-speed generator shaft, increasing rotational speed to meet generator requirements. The low-speed shaft rotates in sync with the turbine blades, while the high-speed shaft powers the generator. Gearboxes typically include a combination of planetary and parallel gear stages, with specific configurations depending on turbine capacity (Gutierrez Santiago et al., 2022). For instance, a single planetary stage followed by two helical stages (1P2H) is common for turbines up to 2 MW, while two planetary stages followed by one helical stage (2P1H) are used in turbines ranging from 3 to 8 MW.

This study focuses on epicyclic planetary stages with stationary ring gears. In these stages, the input shaft is connected to the planet carrier, which houses planet shafts that rotate with the carrier. The planet gears mesh simultaneously with the stationary ring gear and the central sun gear, increasing velocity between the input carrier and the sun, as shown in Fig. 1. The gear mesh forces between the planets and the ring gear are proportional to the input torque. Due to the relatively thin structure of the ring gear, notable deformations could occur on its outer surface, where an optical fiber is installed for monitoring. By measuring strain on the ring gear,

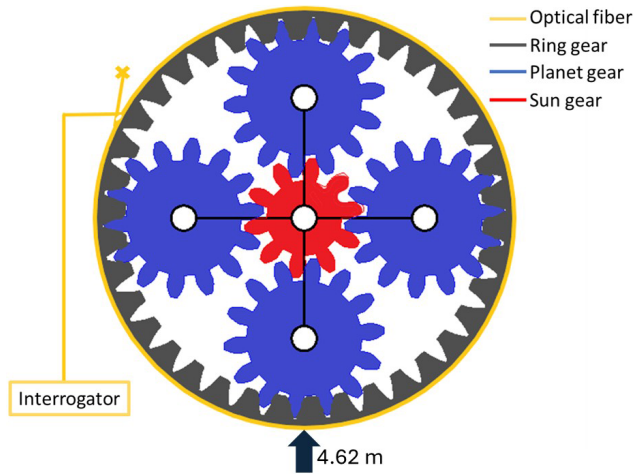


Figure 1. The planetary gear stage and the optical fiber attached to the outer surface of the gearbox. The black arrow indicates the location at the bottom of the gearbox used for strain profile demonstration. The point at 4.62 m refers to the distance from the starting point of the optical-fiber attachment on the gearbox.

torque and potential abnormalities in gearbox operation can be effectively tracked.

2.2 Distributed fiber-optic sensing

DFOS systems measure changes in light properties along an optical fiber, enabling sensing every few millimeters along the length of the optical fiber. This technology relies on naturally occurring light scattering within the fiber, with a small fraction of the light reflected at each point. By analyzing these reflections, strain and temperature changes can be monitored along the fiber's entire length. Two primary methods are used to analyze the scattered light: optical time domain reflectometry (OTDR) and optical frequency domain reflectometry (OFDR). OFDR determines the scattering location based on the time-of-flight principle, which relates the tuning frequency and speed of light in the fiber. The scattering location z is calculated using the following equation (Guo et al., 2021; Liang et al., 2021):

$$z = \frac{fc}{4\pi\gamma n}, \quad (1)$$

where z is the location of the event from the position where the pulse is launched into the fiber, c is the light velocity in a vacuum, f is the detected tuning frequency, γ is the frequency tuning speed, and n is the refractive index of the optic fiber.

In this study, strain and temperature changes were measured with OFDR, providing high spatial and temporal resolution. The frequency shift ($\Delta\nu$) of the scattered light is linearly related to strain and temperature changes as follows:

$$\Delta\nu = c_\varepsilon \Delta\varepsilon + c_T \Delta T, \quad (2)$$

where c_ε is the coefficient of the strain change, $\Delta\varepsilon$ is the strain change, c_T is the coefficient of the temperature change, and ΔT is the temperature change.

This approach enables precise, high-density sensing, allowing for real-time monitoring of strain and temperature variations along the optical fiber. By leveraging these capabilities, DFOS provides detailed insights into gearbox behavior, facilitating the potential for accurate fault detection and performance analysis.

3 Test setup

3.1 Gearbox and test bench

The tested 3.75 MW gearbox comprises two planetary stages and one helical stage, and the first planetary stage has a 2.152 m diameter. Testing was conducted on a back-to-back gearbox test bench, where two wind turbine gearboxes were connected through their low-speed shafts. A motor drove the high-speed shaft of one gearbox, while the high-speed shaft of the second gearbox provided the braking load via another motor, simulating real-world wind turbine generator operation.

The first planetary stage includes four planet gears housed in the planet carrier, which serves as the input or low-speed shaft of the gearbox. As the carrier rotates, the planet gears mesh simultaneously with the sun gear and the stationary ring gear. The gear mesh forces are proportional to the input carrier torque and are transmitted through multiple teeth along the contact lines between the planet gears and the ring gear. These forces generate notable strain on the ring gear, dependent on input torque and load sharing among the planet gears (Gutierrez Santiago et al., 2022, 2025; Gutierrez-Santiago et al., 2024).

A 175 μm polyimide-coated single-mode optical fiber was attached to the outer surface of the ring gear in the first planetary stage (Fig. 2). The fiber was bonded using Loctite EA 3423 epoxy, providing strong adhesion while remaining removable. This approach allowed the fiber to be detached after testing, as the gearbox was a production model intended for operational deployment. The fiber was connected via an extension cable to the OFDR interrogator, located outside the testing area. The system was used to measure strain and temperature changes during the loading test, with specific setup parameters detailed in Table 1.

3.2 Data acquisition

The test started in the morning following another test using the same gearbox. Before the test, the gearbox ran overnight and was stopped to prepare for the test for this study. Data acquisition began before the gearbox started, capturing baseline conditions at slow rotation speeds. The gearbox speed gradually increased, followed by deceleration, to verify the system setup. Afterward, the gearbox was subjected to a sustained

Table 1. The test progress and setup during the loading test. Note that times are given for local time in Spain.

Time	Event	Time	Event
08:55 a.m.	Data acquisition started	09:58 a.m.	17 % torque in reverse
09:15 a.m.	Gearbox started (slow)	10:12 a.m.	33 % torque
09:17 a.m.	Gearbox ramping up speed	10:16 a.m.	50 % torque
09:18 a.m.	Gearbox nearly stopped	10:49 a.m.	66 % torque
09:19 a.m.	Gearbox sped up to reach 100 % torque to warm up	11:08 a.m.	83 % torque
09:41 a.m.	Gearbox is stopping	11:27 a.m.	100 % torque
09:43 a.m.	Gearbox almost complete stopped	12:12 p.m.	Stopping rapidly
09:48 a.m.	Gearbox started in reversed direction with 50 % torque	12:16 p.m.	Stop recording
09:54 a.m.	Gearbox stopped		

Table 2. The setup of the Luna ODiSi 6108 for data collection.

Parameter	OFDR value
Measurement frequency	12.5 Hz
Spatial resolution	2.6 mm
Optical-fiber length	10.2948 m
c_ε , strain coefficient	$-0.638 \text{ microstrain GHz}^{-1}$
c_T , temperature coefficient	$-6.67 \text{ }^\circ\text{C GHz}^{-1}$

100 % torque load to warm up the system. Subsequently, it decelerated to near-complete stoppage before switching rotation direction to begin the primary ramping load test.

In the ramping test, the gearbox restarted in reverse at 50 % torque and then cycled through increasing torque levels: 17 %, 33 %, 50 %, 66 %, 83 %, and finally 100 % of the rated torque. Each percentage represents a torque level normalized to the gearbox's rated capacity. The test concluded with an emergency stop at the maximum torque, signifying the end of the recording. Detailed test progression and events are summarized in Table 1. A Luna ODiSi 6108 OFDR system was used for data collection, offering high-resolution strain and temperature measurements along the optical fiber. The system's parameters are outlined in Table 2.

4 Results and discussion

4.1 Raw-data overview

The raw strain data collected during the test are shown in Figure 3a, where red indicates tensile strain and blue represents compression. The diagonal banding pattern corresponds to gear rotation, with rotation direction changes visible in the shifting patterns between 09:19 to 09:41 (clockwise) and 09:48 to 12:12 (counterclockwise). Figure 3b provides a detailed view of a 30 s interval outlined by white dashed lines in Fig. 3a, revealing the distinct locations of the four planet gears as they rotate along the circumference of the ring gear.

As the test progressed, a shift toward darker-red regions indicated an increase in measured strain. However, since this

strain was derived directly from the frequency shift, it still reflected a combination of both temperature and mechanical effects. The darker-red horizontal strips were attributed to rising temperatures caused by frictional heat generated by shearing the gear teeth when gears rotate, while the diagonal strips were linked to the mechanical strain from the meshing of the rotational gears. Overall, the strain distribution and rotational behavior of the gears were clearly tracked throughout the test.

4.2 Temperature effects

Temperature changes were also shown in the strain data, as shown in Fig. 4, which illustrates the response at a single location (bottom of the gearbox in Fig. 1 or 4.62 m in Fig. 3). Before 09:15 a.m., the strain exhibited a downward drift of approximately 30 microstrains. This is due to the gearbox having run overnight and being stopped for this test, with the drops indicating a cooling effect of about 3 °C. After 09:15 a.m., the measured strain, which includes mechanical and thermal strain, drifted by approximately 150 microstrains at 12:15, equivalent to a 15 °C temperature increase, caused by heat generated during operation. The maximum drift rate occurred between 09:19 and 09:41 a.m., coinciding with the transition from idle to maximum speed.

Because this test focuses on mechanical strains and the thermal effect due to friction was assumed to be slow on the measured data, the slow-drift temperature change shall be removed from the overall measured strain. The large drift can be removed by high-pass filter to isolate dynamic strain variations from slower thermal processes. In this study, a 0.01 Hz (100 s period) was applied to the measured strain. Although the temperature was not completely removed, due to the small fraction of thermal change generated in 100 s, the thermally induced drift became negligible, as shown in Figs. 5 and 6, highlighting the strain behavior under varying loads.

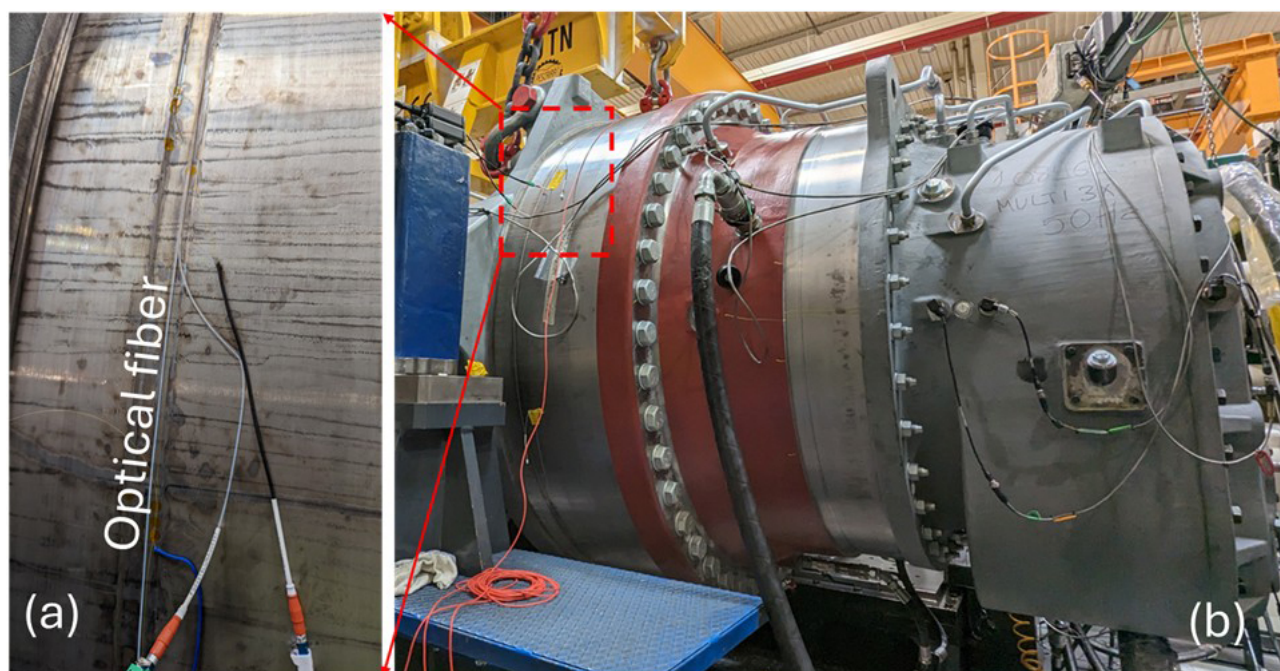


Figure 2. Photo of the installed optical fibers, one for strain and one for temperature, attached to the outer surface of the gearbox. (a) A close look at the installed optical fibers. (b) The full size of the gearbox.

4.3 Gear engagement and torque correlation

The strain profile during the maximum load test (Fig. 5) reveals repeated tensile spikes forming a diagonal pattern, indicating the rotation of the four planet gears. At each timestamp, four red bands (tensile strain) correspond to the locations where planet gears contact the ring gear. These are separated by mild blue bands (compressive strain) where there is no direct gear contact.

After 09:48 a.m., the intensities of both tensile and compressive strain increased as the torque rose from 17 % to 100 %. Each tooth on the ring gear exhibited cyclic strain patterns, reflecting the load distribution during gear engagement. The strain width across approximately five teeth suggests contributions from the helix angle of the gear teeth and partial strain transfer before and after full contact. At the bottom of the gearbox (4.62 m), strain values increased from 33 microstrains at 17 % torque to 161 microstrains at 100 % torque (Fig. 6). These measurements demonstrate how DFOS captures detailed strain variations, even at the level of individual gear teeth.

Examples of strain profiles at various torque levels are shown in Fig. 7a, plotted on a polar axis to illustrate the gearbox's real-time response. The four prominent strain spikes correspond to the locations of the planet gears, with these spikes rotating as the gears move. This polar-axis plot can be generated in real time for each strain profile measurement, clearly displaying the positions of the planet gears and the strain values they produce. The sharp spikes observed at fixed

locations (e.g., 18.7 and 63°) exhibit reading errors and constant values, likely due to poor bonding of the optical fiber to the ring gear. A video illustrating the dynamic rotation of the planet gears and associated strain spikes is in the Supplement (Luo and Wu, 2024).

As the gears rotate, six strain profiles corresponding to different torque inputs are presented, with the time frames selected to align with consistent gear-tooth engagement. At higher torque levels, tensile strain increases at points where the planet gears contact the ring gear, while compressive strain intensifies in areas between gear contacts. This behavior is more clearly depicted in Fig. 7b, which shows strain values recorded at a specific tooth location (4.62 m). The data include strain measurements as the gear meshes with and disengages from the tooth, highlighting the cyclic strain variations under different torque conditions.

The strain variation at five specific teeth is illustrated in Fig. 8a. Each distinct spike corresponds to the arrival and departure of a planet gear during its rotation cycle. The time interval between consecutive spikes is measured at 1.44 s, indicating a full rotation duration of 5.76 s for the first stage. This translates to a rotational speed of 10.42 revolutions per minute (rpm). Additionally, a periodic signal comprising six spikes over 8.64 s is observed at all measured locations. This pattern likely reflects periodic fluctuations in the input torque from the back-to-back gearbox system used during testing.

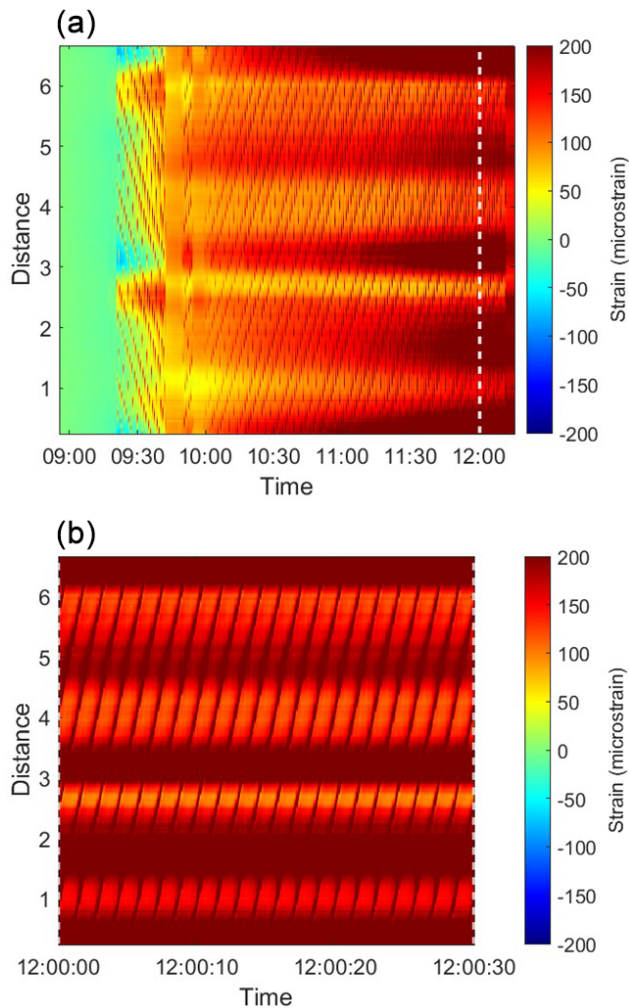


Figure 3. Waterfall representation of the strain profile over time for the circumference of the ring rear. The vertical axis denotes distance in meters, while the color gradient indicates strain in microstrains. (a) Strain profile throughout the entire test period. (b) A magnified view of the strain profile corresponding to the region outlined by the white dashed square in (a).

4.4 Linear response with torque

To analyze the relationship between strain and torque, the peak-to-peak strain was calculated for each measurement location. The peak-to-peak strain, defined as the difference between maximum tensile and maximum compressive strain, captures the full range of strain variation at a given tooth. This metric was computed for 49 evenly spaced locations along the ring gear circumference to assess the strain response under varying torque levels. The results revealed a linear relationship between torque and peak-to-peak strain, as illustrated in Fig. 8b. The average linear relationship is shown in Eq. (3). This linear correlation was exceptionally strong, with a high coefficient of determination ($R^2 = 0.9997$).

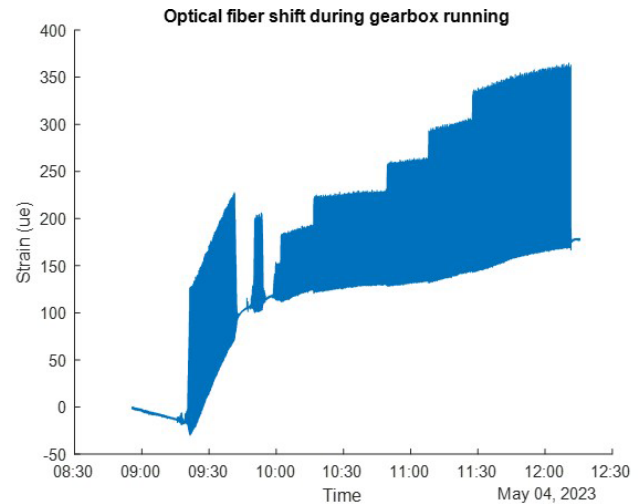


Figure 4. The strain response at 4.62 m or close to the bottom of the gearbox during the loading test.

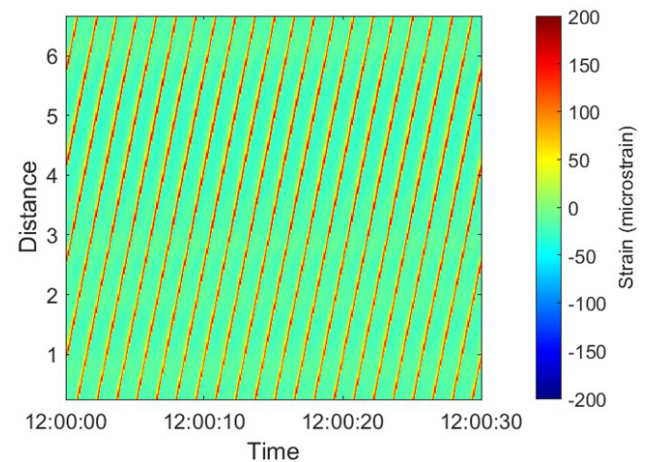


Figure 5. The waterfall of the strain response during the load test after the 0.01 Hz high-pass filter in a period of 30 s when the load is at 100 % torque. The time domain shows the strain profile collected at 12.5 Hz.

It is important to note that the gearbox used for this test was newly manufactured and this testing was conducted in conjunction with the factory's quality control process. However, as the gearbox ages, deviations from this linearity may appear due to factors such as material fatigue; ratcheting (i.e., the progressive, incremental deformation that occurs in a material when it is subjected to cyclic loading); inadequate lubrication; or tooth wear, such as micropitting. Monitoring these deviations over time could provide critical insights into fault detection and predictive maintenance, enabling proactive interventions to prevent failures.

$$\text{Strain} = 184.57 \times \text{load percentage} + c \quad (3)$$

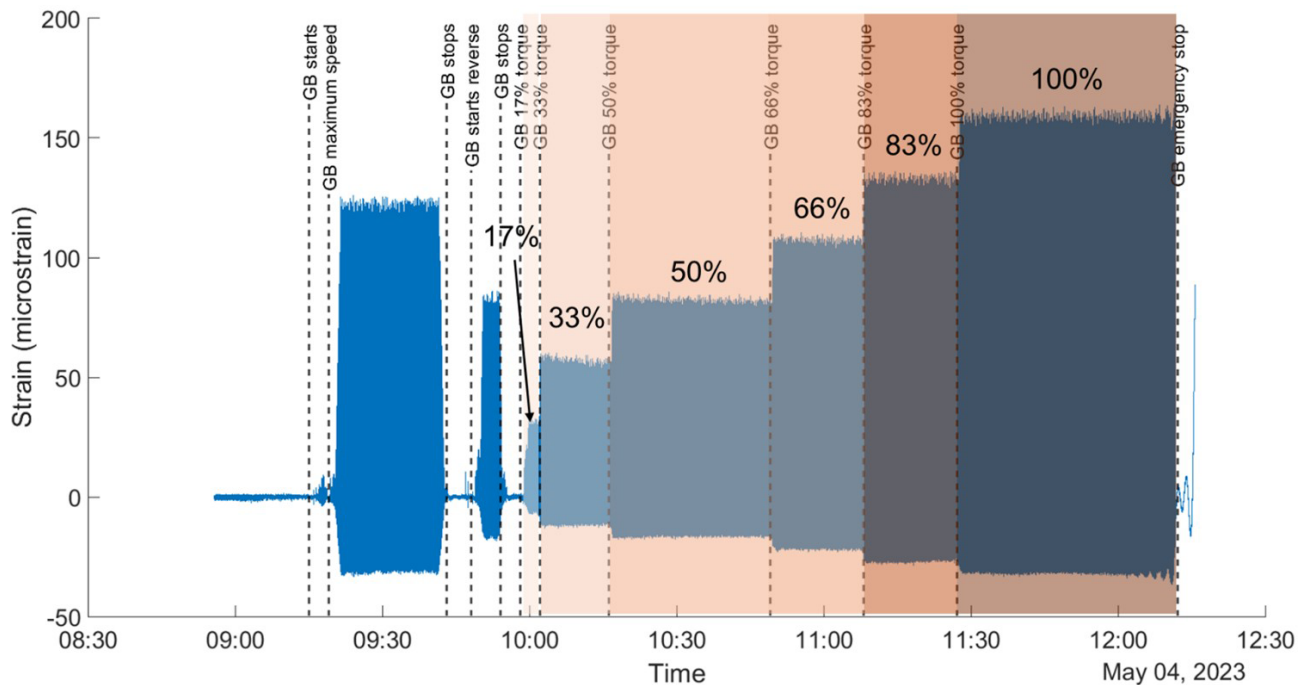


Figure 6. The strain response after a 0.01 Hz high pass at a location of 4.62 m (one tooth's strain response). The dashed line shows the timing of each loading event listed in Table 2. The color background shows the percentage of the rated torque input from 17 % to 100 %. GB represents gearbox.

5 Discussion

The DFOS system offers high spatial resolution, with a 2.6 mm resolution that enables precise strain measurement along the entire circumference of the gearbox. This resolution is sufficient to accurately capture the strain response at each gear tooth. This study validates that strain variations serve as reliable indicators of torque load in wind turbine gearboxes, aligning with findings from previous research using fiber Bragg grating (FBG) sensors (Gutierrez Santiago et al., 2022, 2025). A strong linear relationship between torque and strain was observed across the distributed sensing range, showcasing the potential of DFOS for real-time condition monitoring. By enabling full circumferential monitoring of the gearbox under dynamic load conditions, DFOS can help localize the planet gears and identify minor anomalies, facilitating proactive maintenance and reducing the risk of significant damage. This capability is particularly valuable for offshore wind farms, where minimizing O&M costs is a priority.

The ability of DFOS to produce high-resolution strain data in real time introduces several benefits for wind turbine gearboxes.

- *Comprehensive coverage.* A single optical fiber can monitor the entire circumference of the ring gear, providing unprecedented spatial coverage compared to traditional point-based sensors. Unlike strain gauges or

FBG sensors, which measure strain at discrete points, DFOS enables continuous sensing along the fiber, capturing data at a spatial resolution of 2.6 mm or better. This level of detail can potentially detect localized anomalies such as uneven gear wear or contact misalignment.

Furthermore, DFOS allows for simultaneous monitoring of all gear teeth as they engage with planet and ring gears, offering a complete picture of the mechanical behavior under varying load conditions. This comprehensive view supports not only fault detection but also theoretical modeling of physical behaviors and insights into future gearbox design improvements.

- *Early fault detection.* The high-resolution and high-sensitivity strain data provided by DFOS makes it possible to detect subtle deviations from baseline strain patterns that may indicate the onset of mechanical issues. For example, the system may be able to identify changes in strain response associated with uneven load distribution, gear misalignment, material fatigue, or insufficient lubrication. These deviations often precede more serious failures, allowing maintenance teams to intervene early and prevent escalation.

By monitoring the strain profile over time, DFOS may be able to detect evolving issues, such as gradual wear or the development of cracks, which may not be immediately apparent through conventional monitoring

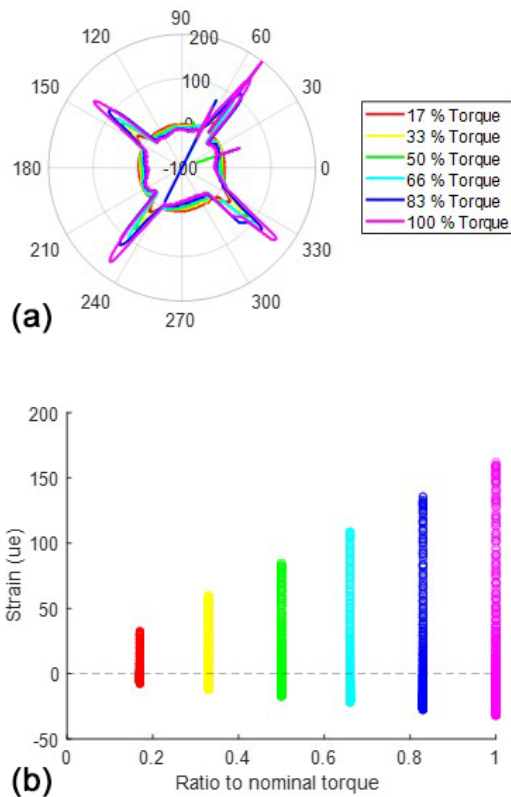


Figure 7. (a) The strain profile in the polar axis when different loads are applied to the gearbox and (b) the scatter plot showing the clusters of all the collected strains at one location on the ring gears during the load test with different load inputs.

techniques. Moreover, the linear relationship between torque and strain observed in this study provides a baseline for detecting irregularities. Deviations from this linearity at specific locations can serve as early warning signs of anomalies such as localized stress concentrations or weakening material.

Early fault detection is particularly valuable in offshore wind turbines, where maintenance operations are costly and challenging due to limited accessibility and harsh environmental conditions. The ability to identify potential issues during regular operation, rather than relying on scheduled inspections or reactive maintenance, significantly reduces downtime and associated costs. Furthermore, this capability supports a transition from time-based to condition-based maintenance strategies, optimizing resource allocation and extending the overall lifespan of the gearbox.

- *Practical installation.* Installing a single standard optical fiber is less labor-intensive and reduces the risk of sensor failure compared to deploying multiple discrete sensors. DFOS can also concurrently capture tempera-

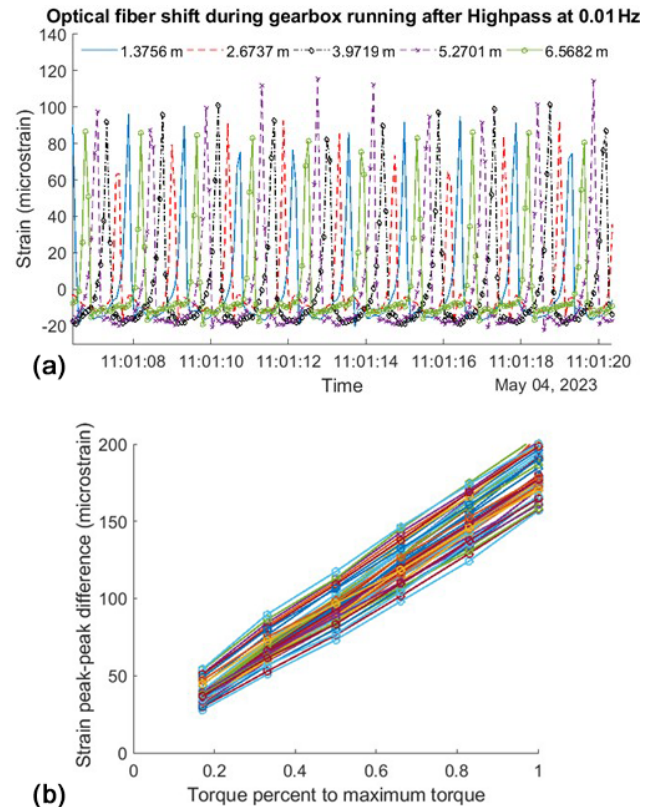


Figure 8. (a) An example of collected strain at 5 locations with time and (b) the peak–peak strain at 49 locations on the ring gear for 6 torque load inputs.

ture data, providing an additional indicator of potential issues such as overheating or lubrication breakdown.

- *Scalability.* While this study measured strain using a single optical fiber installed on the planetary gear, DFOS systems can scale to monitor multiple fibers simultaneously. This enables comprehensive monitoring of the entire gearbox and potentially the nacelle, extending the system’s applicability beyond individual components.

These features support comprehensive monitoring of the gearbox, enabling proactive maintenance. This is particularly important for offshore wind farms, where reducing downtime and O&M costs is critical.

Despite its advantages mentioned above, the current DFOS system also has limitations. Some minor data artifacts were observed, such as sharp spikes at fixed locations (e.g., 18.7 and 63° in Fig. 7a). These irregularities are likely caused by microbending of the optical fiber during installation or the application of epoxy. Refining installation techniques and applying advanced post-processing methods, such as outlier fitting, could mitigate these issues in future applications.

Although temperature effects were filtered out in this analysis to focus on strain behavior, the system’s capability to

measure temperature concurrently should not be overlooked. As shown in Fig. 4, DFOS captured a potential 3 °C cooling when the gearbox stopped rotating and 15 °C heating during gearbox operation at the bottom of the gearbox. If localized overheating occurs, such as from internal damage or inadequate lubrication, the system can detect and pinpoint these anomalies, preventing potential thermal runaway and costly damage. This adds an additional dimension to gearbox condition monitoring.

For this study, a single optical fiber was installed in the first planetary stage. Practical applications could extend this setup to include longer fibers or multiple fibers distributed across various gearbox stages. However, monitoring high-speed rotational components is constrained by the current system's sampling rate of 12.5 Hz. Enhancing OFDR technology to support faster measurement speeds, such as 120 Hz or more, will be critical for monitoring high-frequency operational stages and achieving comprehensive condition monitoring for modern gearboxes.

6 Conclusion

This study introduces a novel approach to measuring fully distributed strain profiles along a planetary gearbox using DFOS. By measuring circumferential strain every 2.6 mm around the ring gear under varying input torque, DFOS achieves high-resolution strain mapping with an accuracy of approximately 1 microstrain at a 12.5 Hz sampling rate, collecting around 2500 data points simultaneously around the gearbox. The approach was validated through strain measurements conducted in the first planetary stage during a load test. By continuously bonding a standard optical fiber to the outer surface of the ring gear, DFOS enabled the acquisition of a comprehensive strain profile as the planet gears rotated.

The load test results demonstrated that strain increased linearly with applied torque across all monitored locations, highlighting the accuracy and reliability of DFOS. Specifically, the system successfully detected the following key parameters:

- The planetary gears operated at a rotational speed of 10.42 revolutions per minute.
- A strong linear relationship was observed between the applied torque and measured strain, providing a method to measure gearbox usage.
- DFOS effectively monitored the planetary gear's rotational direction, ring gear strain response, and potential temperature variations in real time.

These findings confirm that DFOS can be used to accurately quantify applied torque and detect irregular strain patterns, enabling early identification of potential faults before they escalate into catastrophic failures. The high spatial resolution of DFOS also allows for detailed tracking of strain behavior at each gear tooth during meshing. This capability

can contribute to optimizing tooth design for improved reliability and refining turbine control systems. Additionally, the straightforward installation process reduces the need for specialized training and accelerates deployment, showing a potential for lowering O&M costs.

While this study focused on strain behavior, DFOS also offers valuable insights into temperature variations, similar to condition monitoring systems but with higher data density. This capability can assist in fault prediction by identifying heat anomalies, such as those caused by inadequate lubrication or internal damage, providing a comprehensive view of the gearbox's operational health.

Despite its advantages, the current DFOS implementation is limited by its measurement speed, which may be insufficient for monitoring later-stage components operating at higher rotational speeds. Enhancing DFOS technology to achieve a sampling rate of at least 120 Hz would enable more comprehensive monitoring, allowing a single optical fiber to cover the entire gearbox under high-speed operational conditions.

In summary, this research highlights the novelty and potential of DFOS as a transformative tool for real-time, high-resolution monitoring of wind turbine gearboxes. By enabling accurate strain and temperature measurements, DFOS not only enhances fault detection but also supports more efficient gearbox design, operation, and maintenance. Future advancements in system speed and scalability will further expand applications, contributing to the development of reliable and cost-effective wind energy solutions.

Code and data availability. The code and data that support the findings of this study are available from the corresponding author, Linqing Luo, upon reasonable request.

Supplement. The supplement related to this article is available online at <https://doi.org/10.5194/wes-10-1763-2025-supplement>.

Author contributions. LL, UGS, and YW designed the experiments. UGS and YW carried them out. LL performed data processing, and all authors contributed to the data analysis. LL prepared the manuscript with contributions from all co-authors.

Competing interests. The contact author has declared that none of the authors has any competing interests.

Disclaimer. This paper has been authored by an author at Lawrence Berkeley National Laboratory under contract no. DE-AC02-05CH11231 with the U.S. Department of Energy. The U.S. Government retains and the publisher, by accepting the article for publication, acknowledges that the U.S. Government retains a non-exclusive, paid-up, irrevocable, worldwide license to publish

or reproduce the published form of this paper or allow others to do so, for U.S. Government purposes.

Publisher's note: Copernicus Publications remains neutral with regard to jurisdictional claims made in the text, published maps, institutional affiliations, or any other geographical representation in this paper. While Copernicus Publications makes every effort to include appropriate place names, the final responsibility lies with the authors.

Acknowledgements. This work was supported by the EPIC (Electric Program Investment Charge) program of the California Energy Commission (CEC). We would like to thank the Siemens Gamesa Gearbox Facility and staff in Lerma, Spain, for access to the gearbox and assistance during the experiments.

Financial support. This research has been supported by the California Energy Commission (grant no. EPC-19-010).

Review statement. This paper was edited by Yi Guo and reviewed by three anonymous referees.

References

- Barter, G. E., Sethuraman, L., Bortolotti, P., Keller, J., and Torrey, D. A.: Beyond 15 MW: A cost of energy perspective on the next generation of drivetrain technologies for offshore wind turbines, *Appl. Energy*, 344, 121272, <https://doi.org/10.1016/j.apenergy.2023.121272>, 2023.
- Carroll, J., Koukoura, S., McDonald, A., Charalambous, A., Weiss, S., and McArthur, S.: Wind turbine gearbox failure and remaining useful life prediction using machine learning techniques, *Wind Energy*, 22, 360–375, <https://doi.org/10.1002/we.2290>, 2019.
- European Commission (Leyre Azcona (CARSA), S. A. (CARSA), T. L. (CARSA); in cooperation with K. D. (PwC)): SENSING AND MONITORING SYSTEMS FOR OFFSHORE WIND TURBINES Report on promising KETs-based products nr. 8 2 SENSING AND MONITORING SYSTEMS FOR OFFSHORE WIND TURBINES Report on promising KETs-based product nr. 8, 1–24, 2017.
- Feng, Y., Qiu, Y., Crabtree, C. J., Long, H., and Tavner, P. J.: Monitoring wind turbine gearboxes, *Wind Energy*, 16, 728–740, <https://doi.org/10.1002/we.1521>, 2013.
- Guo, J., Shi, Z., Li, H., Zhen, D., Gu, F., and Ball, A. D.: Early Fault Diagnosis for Planetary Gearbox Based Wavelet Packet Energy and Modulation Signal Bispectrum Analysis, *Sensors*, 18, 2908, <https://doi.org/10.3390/s18092908>, 2018.
- Guo, P. and Bai, N.: Wind Turbine Gearbox Condition Monitoring with AAKR and Moving Window Statistic Methods, *Energies (Basel)*, 4, 2077–2093, <https://doi.org/10.3390/en4112077>, 2011.
- Guo, Z., Han, G., Yan, J., Greenwood, D., Marco, J., and Yu, Y.: Ultimate Spatial Resolution Realisation in Optical Frequency Domain Reflectometry with Equal Frequency Resampling, *Sensors*, 21, 4632, <https://doi.org/10.3390/s21144632>, 2021.
- Gutierrez Santiago, U., Fernández Sisón, A., Polinder, H., and van Wingerden, J.-W.: Input torque measurements for wind turbine gearboxes using fiber-optic strain sensors, *Wind Energ. Sci.*, 7, 505–521, <https://doi.org/10.5194/wes-7-505-2022>, 2022.
- Gutierrez-Santiago, U., Keller, J., Fernández-Sisón, A., Polinder, H., and Van Wingerden, J.-W.: Instantaneous mesh load factor (K_γ) measurements in a wind turbine gearbox using fiber-optic strain sensors, *J. Phys. Conf. Ser.*, 2767, 042022, <https://doi.org/10.1088/1742-6596/2767/4/042022>, 2024.
- Gutierrez Santiago, U., van Vondelen, A. A. W., Fernández Sisón, A., Polinder, H., and van Wingerden, J.-W.: Identification of operational deflection shapes of a wind turbine gearbox using fiber-optic strain sensors on a serial production end-of-line test bench, *Wind Energ. Sci.*, 10, 207–225, <https://doi.org/10.5194/wes-10-207-2025>, 2025.
- Haus, L., Sheng, S., and Pulikollu, R. V.: Wind Turbine Major Systems Reliability Trends and Mitigation Strategies, in: Drivetrain Reliability Collaborative Workshop, Lemont, IL, NREL/TP-5000-67394, National Renewable Energy Laboratory (NREL), Golden, CO (US), 2024.
- Huo, D., Kang, Y., Wang, B., Feng, G., Zhang, J., and Zhang, H.: Gear Fault Diagnosis Method Based on Multi-Sensor Information Fusion and VGG, *Entropy*, 24, 1618, <https://doi.org/10.3390/e24111618>, 2022.
- Igba, J., Alemzadeh, K., Henningsen, K., and Durugbo, C.: Effect of preventive maintenance intervals on reliability and maintenance costs of wind turbine gearboxes, *Wind Energy*, 18, 2013–2024, <https://doi.org/10.1002/we.1801>, 2015.
- Keller, J., Guo, Y., Zhang, Z., and Lucas, D.: Planetary Load Sharing in Three-Point Mounted Wind Turbine Gearboxes: A Design and Test Comparison, NREL/TP-5000-67394, National Renewable Energy Laboratory (NREL), Golden, CO (US), 2017.
- Krause, A., Gnauert, J., Jacobs, G., Bosse, D., and Schmitz, L.: Experimental Analysis of Planet Carrier Bearing Loads under Torque and Bending Moment in a Four-Point-Suspension Drive Train, *J. Phys. Conf. Ser.*, 2265, 32007, <https://doi.org/10.1088/1742-6596/2265/3/032007>, 2022.
- Li, Y., Song, W., Wu, F., Zio, E., and Zhang, Y.: Spectral Kurtosis of Choi–Williams Distribution and Hidden Markov Model for Gearbox Fault Diagnosis, *Symmetry (Basel)*, 12, 285, <https://doi.org/10.3390/sym12020285>, 2020.
- Liang, C., Bai, Q., Yan, M., Wang, Y., Zhang, H., and Jin, B.: A Comprehensive Study of Optical Frequency Domain Reflectometry, *IEEE Access*, 9, 41647–41668, <https://doi.org/10.1109/ACCESS.2021.3061250>, 2021.
- Link, H., La Cava, W., Dam, J., McNiff, B., Sheng, S., Wallen, R., McDade, M., Lambert, S., Butterfield, S., and Oyague, F.: Gearbox Reliability Collaborative Project Report: Findings from Phase 1 and Phase 2 Testing, NREL, <https://doi.org/10.2172/1018489>, 2011.
- Liu, Y., Hu, T., Chen, Y., Hao, Z., and Liu, M.: Dynamic Fatigue Analysis of High-Speed Trains Gearbox Using Copula Function, *Math. Probl. Eng.*, 2022, 1088747, <https://doi.org/10.1155/2022/1088747>, 2022.
- Luo, L. and Wu, Y.: The strain response of the gearbox rotation, detected by DFOS, TIB AV Portal [video], <https://doi.org/10.5446/69667>, 2024.

- Musial, W., Butterfield, S., and McNiff, B.: Improving Wind Turbine Gearbox Reliability, 2007 European Wind Energy Conference Milan, Italy May 7–10, Conference Paper: NREL/CP-500-41548, 2007.
- Peng, H., Zhang, H., Fan, Y., Shangguan, L., and Yang, Y.: A Review of Research on Wind Turbine Bearings' Failure Analysis and Fault Diagnosis, *Lubricants*, 11, 14, <https://doi.org/10.3390/lubricants11010014>, 2023.
- Röckmann, C., Lagerveld, S., and Stavenuiter, J.: Operation and Maintenance Costs of Offshore Wind Farms and Potential Multi-use Platforms in the Dutch North Sea, in: *Aquaculture Perspective of Multi-Use Sites in the Open Ocean: The Untapped Potential for Marine Resources in the Anthropocene*, edited by: Buck, B. H. and Langan, R., Springer International Publishing, Cham, 97–113, https://doi.org/10.1007/978-3-319-51159-7_4, 2017.
- Rommel, D. P., Maio, D. D., and Tinga, T.: Calculating loads and life-time reduction of wind turbine gearbox and generator bearings due to shaft misalignment, *Wind Engineering*, 45, 547–568, <https://doi.org/10.1177/0309524X20914022>, 2021.
- Rosinski, J. and Smurthwaite, D.: Trouble shooting Wind Gearbox Problems, *Gear Solutions*, 8, 22–23, 2010.
- Schmidt, S., Heyns, P. S., and Gryllias, K. C.: A discrepancy analysis methodology for rolling element bearing diagnostics under variable speed conditions, *Mech. Syst. Signal Process.*, 116, 40–61, <https://doi.org/10.1016/j.ymssp.2018.06.026>, 2019.
- Sheng, S.: Report on Wind Turbine Subsystem Reliability – A Survey of Various Databases, National Renewable Energy Laboratory (NREL), Golden, CO (United States), <https://www.osti.gov/biblio/1090149> (last access: 18 March 2025), 2013.
- Stehly, T. and Duffy, P.: 2021 Cost of Wind Energy Review, 1–65, NREL, <https://doi.org/10.2172/1907623>, 2021.
- Zhang, H., Ortiz de Luna, R., Pilas, M., and Wenske, J.: A study of mechanical torque measurement on the wind turbine drive train – ways and feasibilities, *Wind Energy*, 21, 1406–1422, <https://doi.org/10.1002/we.2263>, 2018.
- Zheng, M.: Research on time-varying reliability of wind power gearbox with failure correlation, *J. Theor. Appl. Mech.*, 61, 119–127, <https://doi.org/10.15632/jtam-pl/158008>, 2023.