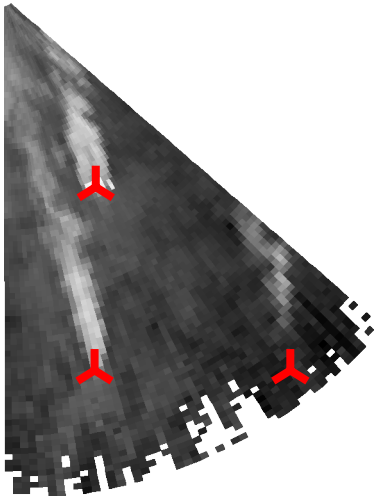


(a) Original data



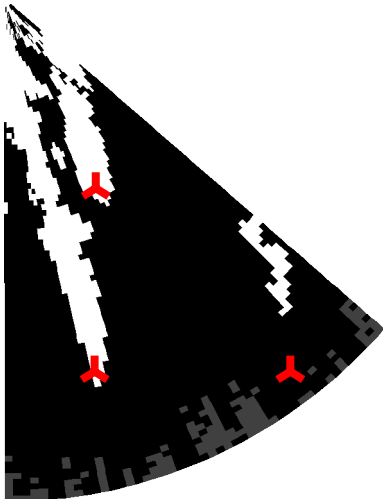
(b) Confusion matrix:
ATS method

TP 76.77%	FN 23.23%
FP 0.00%	TN 100.00%

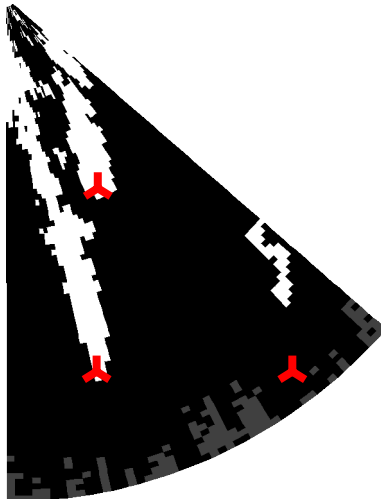
(c) Confusion matrix:
Deficit-based method

TP 60.03%	FN 39.97%
FP 0.00%	TN 100.00%

(d) Manual detection
Threshold: 0.40



(e) ATS method
Threshold: 0.43



(f) Deficit-based method

