

wes-2016-17: Response to reviewer comments

Reply to the comments of reviewer RC1

- 5 We are thankful to the reviewer for reviewing the manuscript. Below is a point-by-point reply to the comments.

Abstract

Substitute “...was an escarpment” by “...was the escarpment facing westerly winds”

- 10 *Action: Text will be modified as per the comment.*

2. Experimental setup

2.1. WindEEE experimental setup

2.1.1. WindEEE facility

- 15 Too many indexing levels without text. You should be able to write something just after section 2. and subsection 2.1.

Please check the whole text.

Action: The third heading level will be removed, and additional text will be inserted between the first and second heading levels for clarity. The rest of the text will be check and adjusted as necessary.

Page 8, line 30

- 20 “...used by Berg et al. (2011) to calculate friction velocity using data from the upstream reference mast M0 in the Bolund field campaign”. Please indicate at which height.

Reply: A height of $Z = 5$ m above sea level was used by Berg et al. for this calculation.

Action: This will be indicated in the text.

Page 9, lines 15-20

- 25 About the discussion on aerodynamic roughness length, z_0 , for RC1 and RC2 cases, you should indicate that RC1 tests are well within the fully rough regime since $u_* z_0 v^{-1}$ (so no dependence of z_0 on u_* is expected), whereas RC2 tests are in the smooth regime since $u_* z_0 v^{-1} < 0.2$, considering Bowen (2003), so dependence of z_0 on u_* is expected. As well as in the case of BLWTL test which is in the transitionally rough regime. Providing some results for the friction Reynolds number in this section is convenient.

- 30 *Action: We will revise the text as per reviewer’s suggestion regarding the rough and smooth regimes. The friction Reynolds number will be indicated in the text for various cases along with the corresponding roughness regime.*

Page 10, lines 15-20

- 35 Similarities with inflow profiles in Yeow et. al (2015) are expected since u_* values are of the same order and z_0 values are almost the same in both studies (Yeow et al. 2015 and the present one).

Action: The text will be revised to discuss similarities with the results of Yeow et al. (2015) based on u_ and z_0 values*

Page 10, lines 25-30

Providing statistics (i.e. number of occurrences of instantaneous values $u(t) < 0$) for a given set of PIV images pairs) as in Yeow et al, 2015 would provide some insight on the statistical significance of instantaneous inverse flow occurrence.

Reply: The contours of the probability of occurrences of negative instantaneous velocity vectors in the stream-wise direction are plotted in Figures 1, 2 and 3 for three cases with different upstream conditions. Note that the colorbar is on the log scale hence, -1 corresponds to 10⁻¹ and so on. As shown in the figures, the U15RC1 shear case (Figure 3) has relatively higher occurrences of negative vectors over a wider region above the hill surface compared to U14RC1 (Figure 1) and U14RC2 (Figure 2) cases, which were similar to each other. It is also evident in all figures that except for a very small near-surface region close to the escarpment leading edge, the probability of negative occurrences is less than 1%, which further decreases with an increase in the downstream distance and height. This is consistent with the results presented by Yeow et al. (2015).

As mentioned above, there is a very small near-surface region in the vicinity of the escarpment edge with higher probability of negative occurrences. To illustrate this, the contours of negative occurrence probability greater than 0.1 are plotted in Figure 4. As shown, the probability of occurrences of negative vectors reaches up to 80%. Considering relatively high uncertainty in the velocity measurements in the immediate vicinity of the surface, we may not be able to draw any firm conclusion about the presence of the recirculation region.

Action: It is of the authors' view that providing additional figures in the present paper on this topic would not be beneficial, however the text will be revised to discuss the probability of occurrences of negative vectors and its comparison with that of Yeow et al. (2015).

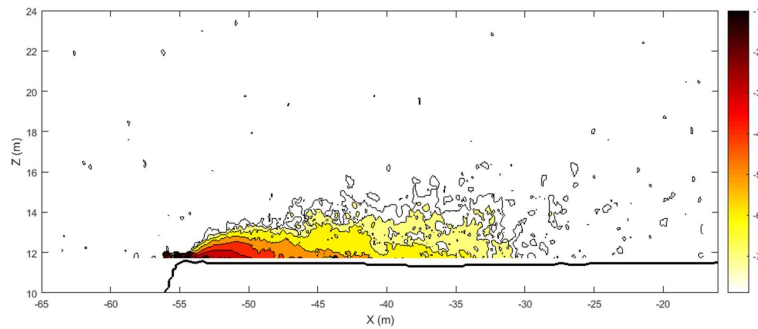


Figure 1. Contours of probability of occurrence of negative stream-wise instantaneous velocity (log scale), U14RC1.

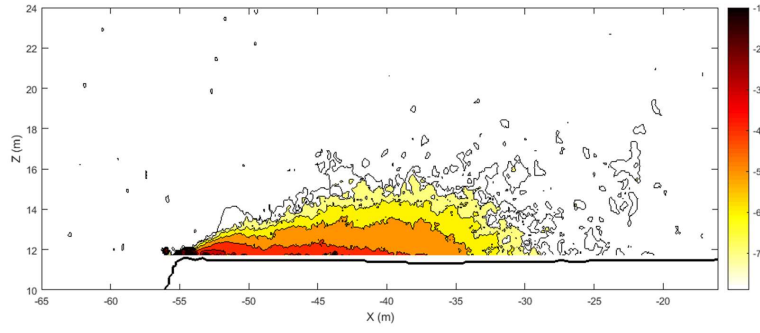


Figure 2. Contours of probability of occurrence of negative stream-wise instantaneous velocity (log scale), U14RC2.

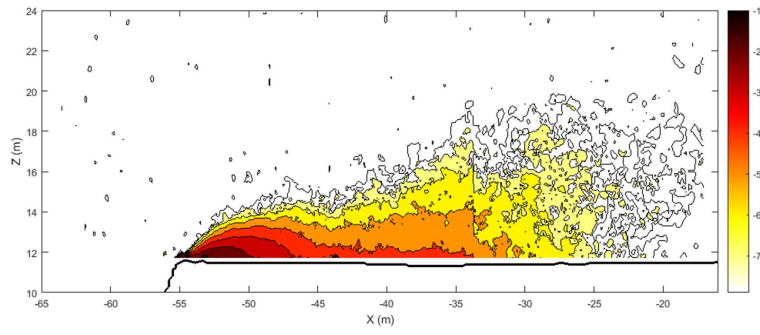


Figure 3. Contours of probability of occurrence of negative stream-wise instantaneous velocity (log scale), U15RC1.

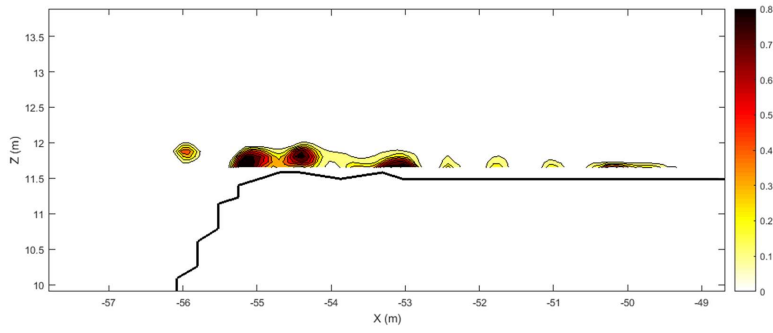


Figure 4. Contours of probability of occurrence of negative stream-wise instantaneous velocity (linear scale), U14RC1.

Page 14, lines 25-30

5 It is evident that U15 cases (both RC1 and RC2) present the best fit to full-scale data both in terms on S/S_0 and Δk at M6 (mainly at 2m a.g.l). This is one of the issues pointed out in previous works. The difference in S/S_0 and Δk PIV patterns between U14RC1 and U15RC1 are evident. The difference in the setup of the wind tunnel fans between U14 and U15 cases is also clear, but there has not been identified any significative difference in the studied non-dimensional inflow parameters.

10 The differences in S/S_0 and Δk at M6 (mainly at 2m a.g.l) are unlikely justified by the small change in Reynolds number, Re_h between U14 and U15 cases. The difference in the ratio h/z_0 is neither the cause of the significantly improved match for cases U15 (both RC1 and RC2).

15 The question is, which are the relevant non-dimensional inflow characteristics that are affected by the difference in the wind tunnel fans setup between U14 and U15 cases, and that affect S/S_0 and Δk at M6 (mainly at 2m a.g.l)? Have you checked the vertical inflow profiles for $uw(z)$ $u^{-1}_{-0.05}$ and integral length scales $L_{xw}(z) h^{-1}$? Are there any difference between U15 cases and the other ones for these parameters?

Reply: The reviewer has raised a very important and valid point. We have further investigated this issue and computed other flow-related parameters that can provide some insight into causes of these differences. One parameter that has a direct influence on the turbulence behavior and momentum transport is the Reynolds stress. The vertical profiles of the inflow Reynolds shear stress are shown in Figure 5 for all cases versus the height presented in the full-scale co-ordinates. For the uniform fan configuration, as expected, the magnitude of Reynolds shear stress increased with increasing wind speed. Further, the Reynolds stress magnitude was larger in the presence of higher roughness, also an expected trend.

20 All cases show a similar trend i.e. the Reynolds stress magnitude increased towards the surface and then became almost constant, which corresponds to the constant shear stress region. As the figure shows, the constant stress region covered a height of almost 5 m (in full scale coordinates) from the surface.

The results for the U15RC1 case, where the inflow shear profiles were modified, showed a different behavior locally. A local region of high shear stress is found in the height range of 10-13 m which is likely attributable to the higher operating speed of Fan row 3. This height also corresponds to the region immediately above the hill height. The Reynolds shear stress profiles normalized by the friction velocity (Method 1) are plotted in Figure 6.

30 The results show relatively similar normalized magnitude for all cases except the higher Reynolds stress for U15 in the high shear region. The results show that the magnitude of the non-dimensional Reynolds shear stress for U15 is about 60% higher than that for the U14 case in this high shear region.

The results in Figures 5 and 6 provide clear evidence of the high shear injected into the inflow for the U15 case at the hill height.

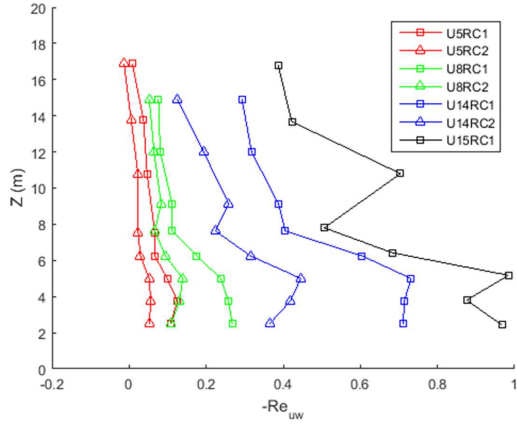


Figure 5. Magnitudes of inflow Reynolds shear stress, all cases

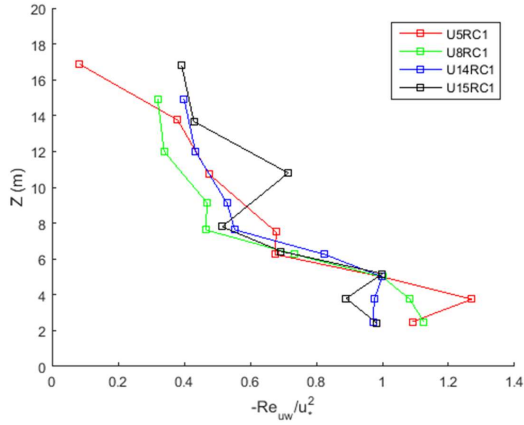


Figure 6. Inflow Reynolds shear stress normalized by u^* (Method 1), RC1 cases

- 5 Another parameter that provides characteristics of the inflow is the integral length scale. The inflow integral time scale was first computed using the Cobra probe data due to higher time resolution. The integral length scale was then computed using Taylor's hypothesis. The inflow integral length scale at different heights for all cases are plotted in Figures 7 and 8 in dimensional and dimensionless forms, respectively. There is a noticeable trend of increased length scale as Reynolds number is increased among the uniform profiles (see Figure 7), however the U15 case (shear profile) with the highest Reynolds number

has the lowest length scales of all RC1 cases. The difference is particularly large at hill height ($Z = 11.73$ m). This shows that for the modified shear profile case (U15), the inflow is comprised of smaller sized eddies compared to the uniform flow cases. Based on the results presented in Figures 5-8, we can infer that the inflow profile for the shear case is characterized by eddies with smaller average size and higher levels of momentum transport than for the uniform fan cases particularly at the hill height.

Action: These results will be discussed in the revised manuscript to demonstrate the differences between the inflow conditions of the shear and uniform flow cases.

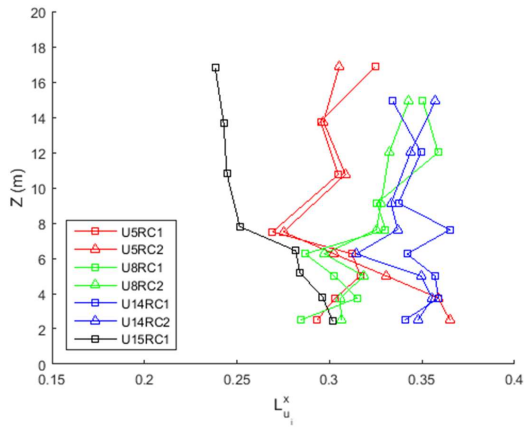


Figure 7. Magnitudes of the inflow integral length scale, all cases

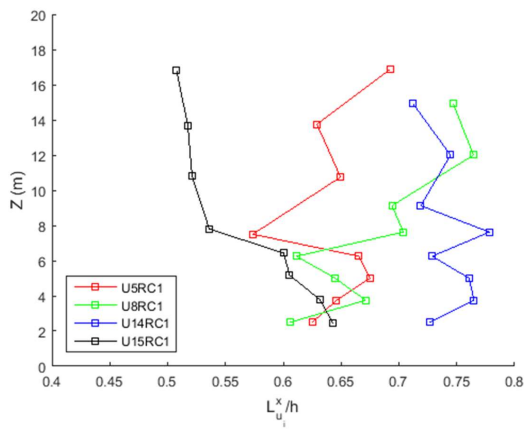


Figure 8. Inflow integral length scale normalized by hill height, RC1 cases

Page 19, table 1
Full scale data should be included.

Action: Full scale data will be added to the table.

Reply to the comments of reviewer RC2

We are thankful to the reviewer for reviewing the manuscript. Below is a point-by-point reply to the comments.

- Just suggestion: revise the title, maybe something more compact.

5

Action: The title will be revised to "Effect of Reynolds number and inflow parameters on mean and turbulent flow over complex topography"

- Consider including a general schematic of the setup with the measurement locations of the PIV and probes.

10 *Action: A schematic diagram will be added showing the relevant positions.*

- Discuss about the boundary layer and topography ratio in the two experimental setups.
If possible link that with the field.

15 *Reply: Boundary layer height is generally $3.3 < \delta/h < 3.6$ for all WindEEE cases. For BLWTL, δ/h is higher, roughly 10.5. Full scale ABL height is not indicated explicitly. If it is ~ 1 km, then $\delta/h \sim 85$.*

Action: The boundary layer heights for the two setups will be included in the revised manuscript.

- Use the PIV measurements to show more features of the flow field. Use this information to get more insight on the effect of the complex topography.

20

Reply: The content of this paper was intentionally limited to discussion on the mean and first order turbulent statistics. A second paper is currently in preparation that investigates in more detail the structure of the turbulent flow. For example, the use of Proper Orthogonal Decomposition (POD) to identify coherent structures in the flow, as well as analysis of higher order turbulent statistics. Hence, such details are beyond the scope of this paper.

25

- The streamlines of figure 3 are not very informative. You might consider adding more details. It is just a suggestion.

30 *Reply: The streamline plots are merely meant to provide a qualitative illustration of the mean flow behaviour: they indicate regions of flow acceleration and deceleration, a lack of recirculation, the similarity among the uniform cases, and the minor differences between the uniform and shear case.*

- Line 15: clarify the meaning of line B at that point.

35

Reply: The Line B corresponds to the wind flow direction of 270°. This is already indicated in the manuscript in Section 1.2.

- Line 29: specify the meaning of 'boundary-layer flows at larger laboratory scales': : i.e., larger respect to ...?

40

Reply: It was in comparison with conventional wind tunnels.

Action: Text will be revised to include this clarification

- Please provide more details on the PIV, including vector spacing, % of overlapping, particle seeding, and laser thickness.

5

Reply: Vector spacing was 16 pixels. At spatial resolution of 0.1902 mm/px, this corresponds to roughly 3.04 mm. 75% overlap was used for the interrogation window cross-correlation.

Seeding particle size is estimated to be $\sim 5 \mu\text{m}$ based on the estimate by Ayotte and Hughes (2004) for a commercial fog generator similar to the one used in the present study. These values will be included in the text.

10 The laser beam diameter specified by the supplier is 9.5 mm. Use of laser optics makes the resulting laser sheet thickness more difficult to estimate however it is expected to be similar.

Action: The above information will be included in the text.

15 - The use of equation 2 to extrapolate probes/PIV is not clear. The log law is valid in a limited region of the flow (constant stress zone). Is this the case?

Reply: Figure 12 shows the inflow wind speed for the measured Cobra Probe data, the log law profile, and the range of heights corresponding to the PIV measurement window. The U14RC1 case is shown; the others are similar.

20 From the plots of inflow Reynolds stress, the region of constant shear stress extends only to $Z \approx 5 \text{ m}$. Ideally the inflow profile would have been measured up to the maximum height of the PIV measurement window, however this was not feasible with the experimental setup available at the time. Thus, the logarithmic law was selected as the best fit to the measured data, given the limitations described.

Action: Text will be modified to further clarify the procedure taken

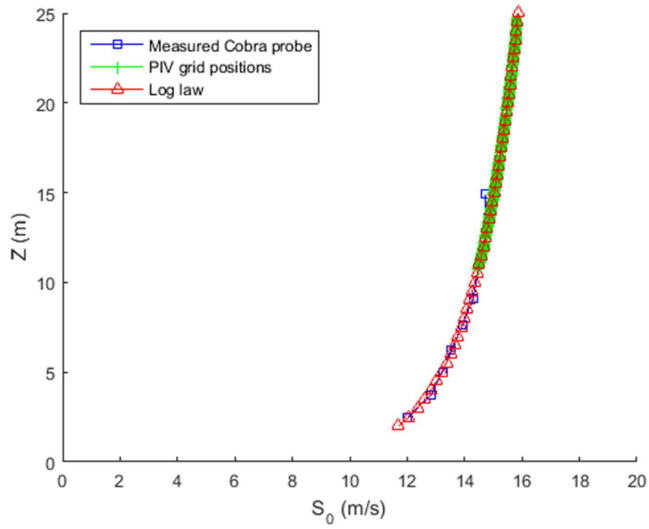


Figure 1. Extrapolation of measured Cobra probe inflow wind speed, U14RC1

- Revise equation 4.

5 Action: The equation will be revised to include the missing overbar on the second “k”.

- The estimation of the u^* from Method 1 and 2 using a reference height is ok if such height is within the constant stress zone. Please verify this.

10 Reply: The inflow Reynolds shear stress profiles are plotted for all cases in Figure 2. As shown, the height of $Z = 5$ m (reference height) is within the constant stress zone.

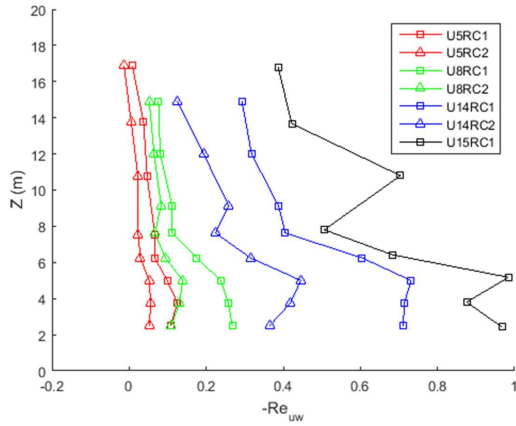


Figure 2. Magnitudes of inflow Reynolds shear stress, all cases

Action: Text will be revised for clarity.

- 5 - Consider using specific figures to show the estimation of u^* from the log law

Reply: Estimation of u^* was conducted using the standard approach of determining the linear line of best fit on a semi-log plot, where the slope of the line is k/u^* and the y-intercept is $\ln(z_0)$. Figure 3 shows this plot for all of the inflow Cobra Probe measurements, while Figure 4 shows only the subset of data within the region of constant shear stress. It is the best fit line between data points in Figure 4 that was used to estimate u^* and z_0 for Method 3 in the paper.

This figure was not included in the paper given that the procedure is fairly standard, and in order to keep the total number of figures to a reasonable number.

Action: Text will be added or modified to clarify the approach used.

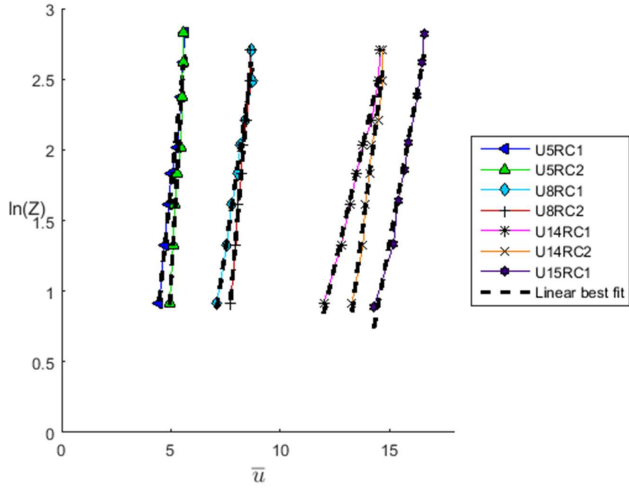


Figure 3. Semi-log plot of inflow stream-wise velocities, all measured data.

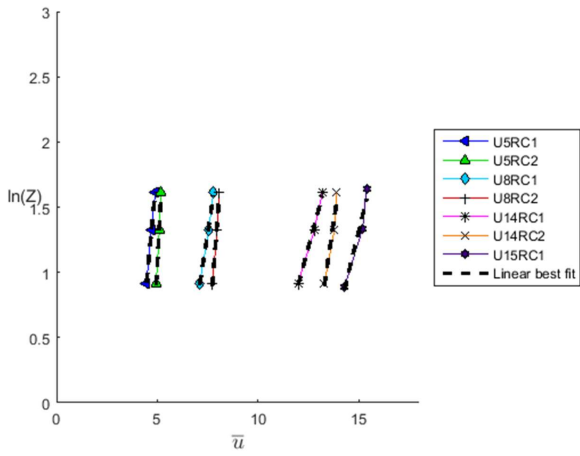


Figure 4. Semi-log plot of inflow stream-wise velocities, subset of data within region of constant shear stress.

5
- Line 30: the discussion of the small region with some negative velocity vectors is not

supported from figure 3.

Reply: Considering relatively high uncertainty in the velocity measurements in the immediate vicinity of the surface, we may not be able to draw any firm conclusion about the presence of the recirculation region.

Action: The text in this section will be modified to remove any reference to the recirculation region where negative velocity exists.

- In general, you might consider discussing relative differences to infer if variables are similar or not.

Action: The percent difference between results for different cases will be added to the text where it has not been done already.

- Page 13, line 20: you use a reference to support Re independence to explain the differences of the profiles, but the spirit of the paper is to evaluate Re effects! Please clarify this apparent confusion.

Reply: The reference was not intended to explain the difference between profiles, but rather to indicate that the present results for the uniform cases agree with the literature (lack of Reynolds number dependence), and thus another variable besides Reynolds number appears to be responsible for the differences between profiles.

Action: Text will be revised to clarify this

Technical corrections:

- Please proof-read the text, and remove inconsistencies like the setting in figure 5 and text in page 11, line 22. Also revise figure captions.

Action: The entire text will be proofread for any inconsistencies and adjusted accordingly.

- Replace upstream by upwind,

Action: This will be replaced.

Reply to Editor Comments

- Ensure that all text on figures (e.g. Figure 1) can be read
- Ensure that all acronyms are defined (e.g. CNC)
- Ensure capitalization of variables is consistent (u (pg 6 line 19) vs U (pg 6 line 24))
- Consider increasing font size for Figures 2, 3.

Action: The text in the final manuscript will be adjusted to account for each of the above comments

Effect of Reynolds number and inflow parameters on mean and turbulent flow over complex topography

Ryan Kilpatrick^{1,3}, Horia Hangan^{1,2}, Kamran Siddiqui^{1,3}, Dan Parvu^{1,2}, Julia Lange⁴, Jakob Mann⁴, and Jacob Berg⁴

¹WinDEEE Research Institute, University of Western Ontario, London, Ontario, N6M 0E2, Canada
²Department of Civil and Environmental Engineering, University of Western Ontario, London, Ontario, N6A 5B9, Canada
³Department of Mechanical and Materials Engineering, University of Western Ontario, London, Ontario, N6A 5B9, Canada
⁴DTU Wind Energy, Technical University of Denmark, Frederiksborgvej 399, DK-4000 Roskilde, Denmark

Correspondence to: R. Kilpatrick (rkilpatr@uwo.ca)

Abstract. A characterization of mean and turbulent flow behaviour over complex topography was conducted using a large-scale (1:25) model in the WinDEEE Dome at Western University. The specific topographic feature considered was the Bolund Hill escarpment facing westerly winds. A total of eight unique inflow conditions were tested in order to isolate the impact of key parameters such as Reynolds number, inflow shear profile and effective roughness, on flow behaviour over the escarpment.

The results show that the mean flow behaviour was generally not affected by the Reynolds number, however a slight increase in speed-up over the escarpment was observed for cases with lower inflow roughness. The shape of the inflow wind shear profile also had a minor impact on the mean flow near the escarpment. More significant effects were observed in the turbulent flow behaviour, where the turbulent kinetic energy (TKE) over the escarpment was found to be a strong function of inflow roughness and a weak function of the Reynolds number. The local change in the inflow wind shear was found to have the most significant influence on the TKE magnitude, which more closely approximated the full-scale TKE data, a result which had not been previously observed in wind tunnel modelling of this topography.

1 Introduction

Wind turbines over the last few decades have emerged as a reliable and cost-competitive means of producing clean, renewable electricity. Although typically built on relatively flat terrain such as plains and farmland, wind farms are increasingly being placed in more rugged, or complex, terrain, marked by abrupt changes in elevation (Palma et al., 2008).

These sites often have strong wind resources, yet designing wind farms for these regions involves additional challenges due to the changes imposed by the terrain on the three-dimensional structure of the wind, such as speed-up regions, changes to the wind shear profile, large vertical wind velocities, and modification of turbulence characteristics (Walmsley and Taylor, 1996; Botta et al., 1998). As a result, the essential prediction of on-site wind conditions, often estimated from measurements at a limited number of mast locations, also becomes more challenging. The use of linearized models, the current industry standard for wind resource assessment and turbine micro-siting, proven to be very effective in gently sloping terrain, can produce inaccurate results when applied at sites with very complex terrain (Palma et al., 2008; Berg et al., 2011). The use of

Deleted: Investigation of the e

Deleted: of Bolund Hill

Deleted: an

Deleted: upstream

Deleted: upstream

Deleted: upstream

Deleted: upstream

Deleted: and

more advanced modelling techniques such as Reynolds Averaged Navier Stokes (RANS), and Large Eddy Simulation (LES), have generally proven to be more accurate in complex topographic terrain (e.g. Rasouli and Hangan, 2013) compared to field measurements, and are making inroads with industry, although they come with the trade-off of higher computational cost (Ayotte, 2008; Ayotte et al., 2010). These advanced models generally require a higher degree of user input and experience and thus results can be significantly affected by changes to boundary conditions, turbulence closure models and other parameters, as shown for example in the wide spread of Computational Fluid Dynamics CFD results in the Bolund blind comparison exercise (Bechmann et al., 2011).

Thus, a better understanding of the wind regime in complex terrain, from a fundamental fluid dynamics perspective, is critical, given the opportunities for improved overall wind turbine performance including higher annual electricity production and reduced fatigue loading and associated maintenance costs (Peinke et al., 2004; Berg et al., 2011). This improved understanding of the flow behaviour can be used by modellers to select appropriate boundary conditions and turbulence models with greater confidence. One area that is not fully understood, and forms the subject of this study, is the sensitivity of the mean and turbulent response of the flow over complex topography to changes in the inflow conditions.

1.1 Wind tunnel modelling of flow over topography

In order to improve computational models, the model results need to be validated against actual flow conditions. Full-scale testing is ideal for this purpose, however due to the lack of control of inflow conditions, significant testing cost, time and effort required, wind tunnel modelling has served as a valuable tool for development and validation of both numerical and analytical models (Ayotte and Hughes, 2004). Provided that certain conditions are met, measurements taken of the flow across a scale model can provide very useful and repeatable representations of full scale conditions as well as benchmarking for the validation of numerical and analytical models. The controlled environment of the wind tunnel provides a means of isolating the effects of various parameters on the mean and turbulent flow behaviour, which is usually not possible in the field.

There are several examples of wind-tunnel experiments conducted on flow over scale models of real topography for the purpose of wind resource assessment and wind turbine siting. These include isolated hill cases such as Askervein Hill (Taylor and Teunissen, 1987), Kettles Hill (Salmon et al., 1988), and more recently Bolund Hill (Berg et al., 2011), as well as highly topographically complex regions with multiple hills and valleys (Chock and Cochran, 2005; Rasouli et al., 2009; McAuliffe and Larose, 2012).

1.2 Bolund experiment

The Bolund experiment arose from the need for additional model validation of flow ~~over~~ complex terrain, extending the Askervein Hill Project of the early 1980s by offering steeper terrain and thus a greater challenge for numerical models to resolve. Bolund Hill is a peninsula located near Roskilde, Denmark, and is characterized by a long ~~upwind~~ open fjord fetch, a steep escarpment and a long flat section on top of the island. The Bolund topography is geometrically similar to a typical wind turbine site in complex terrain, albeit at smaller scale, and is well-suited as a test site given its well-defined, undisturbed inflow

Deleted: in a

Deleted: upstream

conditions, neutral atmospheric stratification and relative absence of thermal and Coriolis effects (Berg et al., 2011). Although Bolund is a small hill, approximately 12 m high by 75 m wide and 130 m long, similarity laws allow for upscaling of 10 – 30 times under neutral atmospheric stratification.

Studies of the wind flow over Bolund Hill include the original field campaign (Berg et al., 2011); follow-up Lidar measurements of the escarpment wake (Lange et al., 2016); computational and physical modelling of the hill as a part of the blind comparison test (Bechmann et al., 2011); wind tunnel modelling (Yeow et al., 2015); LES modelling (Diebold et al., 2013); and wind-tunnel and LES modelling (Conan et al., 2016). During the field campaign, measurements were taken via 35 anemometers on 10 masts, positioned along two main incoming flow directions referred to as line A (239°) and line B (270°). These were the benchmark measurements against which the results of subsequent modelling efforts have been compared. A detailed diagram of the Bolund topography, with mast positions and flow directions, appears in Berg et al. (2011).

1.3 Present study: characterization of mean and turbulent flow over Bolund across a range of input conditions

The present study is focused on the characterization of the flow over Bolund Hill, along line B, in the vicinity of the escarpment, using two physical scale models (1:100 and 1:25), at Reynolds numbers (based on model hill height and wind speed at hill height) ranging from 4×10^4 to 5×10^5 . The main objectives of this study were to isolate and analyse the dependence of the mean and turbulent flow behaviour over the escarpment on various parameters including Reynolds number, inflow wind shear profile, and inflow roughness. The 1:25 scale experiments were conducted at the Wind Engineering, Energy, and Environment Research Institute (WindEEE), while the 1:100 scale experiments were conducted at the Boundary Layer Wind Tunnel Laboratory (BLWTL). Both facilities are located at Western University. The two sets of results were then compared with the full-scale measurements, and with results from previous studies on Bolund Hill. Particle Image Velocimetry (PIV) and Cobra Probes were used for flow velocity measurements at key locations on the scaled models.

2 Experimental setup

The experimental setup, comprising the wind tunnel facility, the topographic model, instrumentation and measurement procedure is described in the sections below, for both the WindEEE and BLWTL experiments.

2.1 WindEEE facility

The WindEEE dome is a unique wind research facility designed to simulate a wide variety of wind flow patterns including rotational (axisymmetric) and boundary layer flows at larger laboratory scales than conventional wind tunnels. A general description of the facility is provided in Hangan (2014). The hexagonal test chamber, with diagonal length of 25 m, is enclosed in a return air chamber of 40 m diagonal length. The WindEEE test chamber contains 106 fans, whose wind speed and direction can be varied independently to produce the desired flow conditions. The facility can be operated in two distinct modes: multi-fan wind tunnel or axisymmetric mode. The present experiments were conducted exclusively under the former configuration,

Deleted: ,

Deleted: Line

Deleted: Line

Deleted: Line

Deleted: upstream

Deleted: ¶
2.1 WindEEE experimental setup¶

Deleted: .1

Deleted: -

Deleted: (25 m

Deleted:)

Deleted: was

with only the fans along one wall of the hexagon **in operation**. **The fans are** mounted in an array format i.e. four rows of 15 fans each, for a total of 60 fans. Each of these fans are 0.8 m in diameter and operate at approximately 25 m/s at nominal power of 30 kW. Each fan is equipped with variable speed drive and can be individually controlled to create a customized flow pattern. A contraction section was positioned immediately **downwind** of the 60-fan wall to improve flow uniformity and

increase flow speed across the 5 metre diameter test section (turntable) in the centre of the chamber. A trip and a series of spires were employed **downwind of the fan wall, within the contraction section**, to enhance turbulence intensity.

In addition to individual fan control, the WindEEE facility also provides the ability to set roughness element position and height, allowing physical simulation of a wide range of incoming Atmospheric Boundary Layer (ABL) flow profiles. There are over 1500 roughness elements in the test chamber, each with maximum height of 30 cm. The present experiment employed only the roughness element sections in the vicinity of the contraction, **upwind** of the turntable. Two different roughness element configurations, both with uniform element height of roughly 7.5 cm, were used for the WindEEE experiment, hereinafter referred to as RC1 and RC2. For RC1, all of the roughness elements **upwind** of the turntable were raised, whereas for RC2, one block of about 80 elements immediately **upwind** of the turntable was lowered to the floor, resulting in a lower effective roughness value than **that of** RC1.

2.2 Bolund scale model

The 1:25 scale model of Bolund Hill was produced by **Computer Numeric Control (CNC)** milling of several large blocks of Expanded Polystyrene (EPS) according to topographical data of the island. These blocks were then glued together and painted black with latex paint. The overall size of the model was roughly 4.5 m across, 0.5 m high, and 3.5 m long. A solid ramp with slope of roughly 45° was constructed from EPS and fastened to the **downwind** edge of the model to provide a smooth transition and reduce unwanted flow separation. The model was positioned in the chamber such that the escarpment edge was roughly 12.4 m from the 60-fan wall, and the plane of measurement (**along line B**) was parallel to the flow direction. **A simplified schematic diagram of the WindEEE experimental setup is shown in** Figure 1, **while a** photograph of the experimental setup is presented in Figure 2. **The centre-point of the model, C_p , was set as the reference location ($X = 0$), which is** also the intersection of **line A** and **line B**, as per the full-scale co-ordinate system **(see Figure 2)**.

2.3 PIV measurement

Particle Image Velocimetry (PIV) was used to measure the two-dimensional velocity field in a vertical plane above the model, along line B, in the vicinity of the escarpment. The measurement region encompassed a rectangular area extending roughly from $Z = 11.4$ m to $Z = 25$ m and **from** $X = -70$ m to $X = -20$ m in the full-scale co-ordinates, where the value $Z = 0$ corresponds to sea level. Throughout this work uppercase Z denotes absolute height above sea level while lowercase z denotes height **measured from** the hill surface. Three 12 megapixel cameras (IO Industries Flare 12M125-CL), each with 105 mm f/2D Nikon AF DC-NIKKOR lenses, were used to capture images. The cameras were positioned in a row parallel to the flow direction, facing the model at a distance of roughly 3.55 metres from the camera lens to the measurement plane, at a height such that the

Deleted: downstream

Deleted: upstream

Deleted: upstream

Deleted: upstream

Deleted: that for

Deleted: 1.2

Deleted: downstream

Deleted: Line

Deleted: A

Deleted:

Deleted: Figure 1a

Formatted: Font: Italic

Formatted: Font: Italic, Subscript

Deleted:

Deleted: position in the longitudinal direction is indicated by the centre-point of the model, C_p

Deleted: Line

Deleted: Line

Deleted: , shown in

Deleted: Figure 1a

Deleted: 1.3

Deleted: Bolund

Deleted: relative to

bottom of the camera frame of view was just below the hill surface. Camera resolution was 4096 x 3072 pixels, and the corresponding measurement field of view for each camera in the current setup was about 0.78 m wide by 0.58 m high. The horizontal positions of the cameras were ~~selected such that the~~ overlap ~~between~~ the adjacent fields of view ~~was at least 10%, ensuring~~ spatial continuity of flow measurements. The overlap between cameras 1 and 2 was 0.167 m, and between cameras

2 and 3 was 0.088 m, with camera 1 being the most ~~upwind~~. Thus the combined measurement area was roughly 2.09 m wide by 0.58 m high ~~(52.3 m by 14.5 m in full-scale co-ordinates)~~.

A Litron Nano Piv Series dual cavity Nd:YAG laser with ~~energy of 425 mJ/pulse, wavelength of 532 nm and beam diameter of 9.5 mm~~ was used to illuminate the flow field. The laser was positioned directly behind the model, pointing ~~upwind~~, coincident with ~~line B~~, with the laser head roughly 0.60 m off the ground, as shown in ~~Figure 2~~. A 50° cylindrical lens was positioned immediately in front of the laser head to convert the beam into a two-dimensional sheet. The laser was synchronized to the cameras and the frame grabber. In this study, the pulse repetition rate for each laser cavity was set at 9 Hz resulting in ~~an~~ image acquisition rate of 18 frames per second ~~for each camera or 9 Hz for each image pair~~. The images were acquired via ~~IO Industries~~ Coreview software as 8-bit grayscale images in ~~Tagged Image File Format (TIFF)~~ format. PIV data were recorded for 5 minutes per test case, providing roughly 2700 image pairs. An Ultratec CLF-4460 commercial fog generator, positioned in the dome's upper plenum, was used to seed the test chamber with non-toxic, water-based smoke that served as the tracer. ~~Seeding particle size is estimated to be ~5 µm based on the estimation by Ayotte and Hughes (2004) for a commercial fog generator similar to the one used in the present study.~~

2.4 Cobra Probe measurement

Cobra Probes, manufactured by Turbulent Flow Instrumentation Pty Ltd., are dynamic multi-hole pressure probes for measuring all three components of mean and fluctuating velocities and static pressure. In the present experiment, Cobra Probe measurements were taken at an ~~upwind~~ reference location, as well as ~~at a~~ few positions along the hill. A vertical array of eight Cobra Probes was used, with spacing between probes ranging from roughly 5 cm near the bottom of the array to 15 cm near the top. The total vertical measurement distance was about 60 cm, or 15 m in full-scale ~~co-ordinates~~. The ~~upwind~~ reference position was located 4.44 m ~~upwind~~ of C_p in the model scale ~~(2.25 m upwind of the escarpment leading edge)~~, or $X = -111$ m in the full-scale. Although initially intended for the Cobra ~~Probe~~ position to coincide with the full-scale ~~upwind~~ reference mast M0, located at $X = -180.8$ m, this was not possible in the current setup due to the proximity of the model to the contraction opening. However, the ~~selected~~ location was deemed to be sufficient as a reference location given that it was far enough from the fan wall to assume fully mixed flow and far enough from the model to avoid significant slow-down effects. Along the hill, Cobra Probe measurements were taken at the escarpment edge ($X = -54.7$ m), at M6 ($X = -46.1$ m) and at M3 ($X = 3.2$ m), where values in parenthesis are full-scale co-ordinates. Due to time constraints, Cobra Probe measurements at these positions were not taken for each of the PIV test case configurations. The probe array was mounted either on a stationary floor rack, or fixed to the overhead rail system, and moved to various positions along line B. All Cobra Probe measurements were conducted at ~~an~~ acquisition rate of 10,000 Hz, ~~an~~ output to file rate of 1250 Hz, and ~~a~~ sampling time of 120 seconds.

Deleted: set in a way

Deleted: to form

Deleted: among

Deleted: to

Deleted: e

Deleted: upstream

Deleted: the

Deleted: operating at the

Deleted: upstream

Deleted: L

Deleted: Figure 1

Deleted: .

Deleted: the

Deleted: by

Deleted: (IO Industries)

Deleted: the

Deleted: 1.4

Deleted: upstream

Deleted: upstream

Deleted: upstream

Deleted: probe

Deleted: upstream

Deleted: current

2.5 BLWTL experimental setup

The model used for the BLWTL experiments was a 1:100 scale model of Bolund Hill, using the same topographical data as the WindEEE model. The BLWTL model was similarly cut from EPS, in two sections, and fastened together. The model was then fixed to the turntable at the centre of the test section and rotated such that the principal flow direction coincided with the line B. Figure 3 shows a photograph of the experimental setup with wind direction and mast positions indicated. BLWTL Tunnel 1 is an open circuit type with a length of 33 m and has the cross-section of 2.4 m (width) × 2.15 m (height) at the test section. In the present setup, three triangular spires, as well as a bar trip were positioned at the far upwind end of the tunnel, however no active roughness elements were used, in order to simulate inflow conditions with an ABL profile over a smooth surface. The measurements were conducted at a wind speed of 4.6 m/s that corresponds to a Reynolds number of approximately 3.6×10^4 , using the maximum height of the hill (0.117 m in model-scale) as the characteristic length.

Cobra Probe measurements were conducted along vertical profiles at model-scale positions equivalent to the full-scale coordinates of M0, M7, M6, M3 and M8, as well as at the escarpment ($X = -54.7$ m in full-scale). The vertical velocity profile was obtained by using two Cobra Probes mounted to the wind tunnel traverse system and the vertical position was incremented after each sample, by 12.7 mm in model-scale (1.27 m in full-scale), near the floor, and 50–100 mm (5–10 m full-scale) higher up. The vertical extent of the measurements was about 1.2 m from the floor (equivalent to 120 m in full-scale). PIV measurements were conducted as well, but are not presented here due to a number of issues with data quality.

3 Data processing

Methods of data processing, for both PIV and Cobra Probe measurements, are described in the following sections.

3.1 PIV data processing

PIV instantaneous velocity fields were obtained by cross-correlating the interrogation regions in the first image of the image pair with the corresponding search regions in the second image. An in-house algorithm implemented in image processing software Heurisko* developed by AEON Verlag & Studio GmbH & Co. KG was used for the PIV data processing. The search window and interrogation window sizes were set as 128 and 64 pixels, respectively, while grid distance was 16 pixels, with 75 % overlap for the interrogation windows. This resulted in a nominal spatial resolution of roughly 3.04 mm for the velocity fields. Spurious vectors were identified and corrected using a local median test developed by Siddiqui et al. (2001). Subsequently, mean fields were calculated by averaging the respective velocity component (streamwise, U , and vertical, W , in the present case) at each grid point over the sampling time. The turbulent velocity fields were computed by subtracting the mean velocity from the instantaneous velocity at each grid point in a given velocity field. These two steps were performed using an in-house code in MATLAB.

PIV statistics were calculated in a manner analogous to Yeow et al. (2015) to enable direct comparison. Mean flow speed, S , was calculated using the two mean wind components U and W from the PIV measurement plane (see Figure 2) as per:

Deleted: 2

Deleted: L

Deleted: (270° wind direction)

Deleted: Figure 1b

Deleted: upstream

Deleted: upstream

Deleted: based on

Deleted: scale

Deleted: , or

Deleted: size

Deleted: u

Deleted: w

Deleted:

Deleted: Figure 1

$$S = (U^2 + W^2)^{1/2} \quad (1)$$

Results shown throughout this work are often expressed as a normalized speed-up ratio $S(x, z)/S_0(z)$, where $S_0(z)$ is the inflow reference speed at the same height. Since the inflow Cobra Probe measurements were taken only up to a height of 0.68 m above the floor, and the PIV windows reached a height of about 1 m, extrapolation was carried out according to the

5 Logarithmic law (Manwell et al., 2009):

$$U(z)/U(z_r) = \ln\left(\frac{z}{z_0}\right) / \ln\left(\frac{z_r}{z_0}\right) \quad (2)$$

where z_r is the reference height. While ideally the inflow profile would have been measured up to the maximum height of the PIV measurement window, this was not feasible with the equipment available at the time of the experiments. Thus, given these limitations, the logarithmic law was selected as the best fit to the measured data. Mean turbulent kinetic energy (TKE), \bar{k} , was

10 calculated according to:

$$\bar{k} = (\overline{u'^2} + \overline{w'^2})/2 \quad (3)$$

where u' and w' represent the fluctuating velocity vectors. The TKE increment $\Delta\bar{k}$ was obtained by subtracting the inflow reference TKE \bar{k}_{05} at a fixed height of $Z = 5$ m in full-scale (0.2 m in model-scale) from the measured TKE at each PIV grid position and normalizing by the square of the inflow reference speed, again consistent with Yeow et al. (2015):

$$15 \Delta\bar{k} = [\bar{k}(x, z) - \bar{k}_{05}]/S_0^2(z) \quad (4)$$

Despite efforts to properly align the three cameras, some minor discrepancies were observed in the velocity data recorded by each camera. For mean wind speeds, error between camera frames typically ranged from about 2–4%, with slightly more error in the highly turbulent region close to the escarpment and just above the model surface. To improve the clarity of presentation, a frame stitching algorithm was implemented to smooth the data within the overlap region between camera frames. At each point in the overlapping region, a weighted average of the data at the two overlapping nodes was taken, such that data points closer to one camera or another were weighted more heavily towards that camera's values. The weightings varied linearly from 0.5 for each camera at the centre of the overlap region (equal weighting), to 1 and 0 on one side, and 0 and 1 on the other.

3.2 Cobra Probe data processing

25 Cobra Probe output data is generated by the companion TFI Device Control software, and consists of a time history of instantaneous u , v and w component wind speeds, as well as a summary output of the mean wind speeds, Reynolds stresses and pressures. The Cobra Probe results presented in this work generally use two-component calculations, where the spanwise wind speed component v is neglected, as per Eq. 1 and Eq. 3, which allows for direct comparison with the PIV results, which is analogous to the approach adopted by Yeow et al. (2015) for hot-wire measurements. However, when comparing the

30 WinEEE and BLWTL inflow profiles, measured with Cobra Probes, against the full-scale data from upwind reference mast M0, all three wind speed components from the Cobra Probe data were used.

Deleted: $S = (U^2 + W^2)^{1/2}$

Deleted: $S(x, z)/S_0(z)$

Deleted: ,

Deleted: $S_0(z)$

Deleted: upstream

Deleted: upstream

Deleted: reference

Deleted: with Cobra Probes

Deleted: at a limited number of heights,

Deleted: to all of PIV grid heights was performed using the

Deleted: $U(z)/U(z_r) = \ln\left(\frac{z}{z_0}\right) / \ln\left(\frac{z_r}{z_0}\right)$

Deleted: \bar{k}

Deleted: $\bar{k} = (\overline{u'^2} + \overline{w'^2})/2$

Deleted: lowercase

Deleted: u'

Deleted: w'

Deleted: change in TKE, or

Deleted: $\Delta\bar{k}$

Deleted: upstream

Deleted: \bar{k}_{05}

Deleted:

Deleted: upstream

Deleted: as per

Deleted: k

Deleted: $\Delta\bar{k} = [\bar{k}(x, z) - \bar{k}_{05}]/S_0^2(z)$

Deleted: using

Deleted: components

Deleted: Generally only the mean data from the summary files were used, with spot checks performed against the time history data to ensure consistency.

Deleted: upstream

Deleted: velocity

4 Inflow profiles

Inflow conditions for various test cases, for both WindEEE and BLWTL experiments, are described in the sections below.

4.1 WindEEE fan configuration

For the present set of experiments, the 60 fans were operated using four different configurations, which were selected in an attempt to match the full-scale incoming wind profile, as well as to produce a range of Reynolds numbers (see Table 1):

- All fans running at 20% of the maximum fan RPM
- All fans running at 30% of the maximum fan RPM
- All fans running at 50% of the maximum fan RPM
- Fans in row 1, 2, and 4 running at 50%, fans in row 3 at 75%, of the maximum fan RPM. For reference, fan row 1 is at floor level

The notation for each test case was set based on the inflow wind speed and the inflow surface roughness. That is, each of the four fan configurations are identified by the mean streamwise incoming wind speed at the model escarpment height in m/s (i.e. U5, U8, U14, U15) and one of two roughness configurations (RC1 or RC2), where RC1 corresponds to higher roughness. For example, case U5RC1 corresponds to the test case conducted at the inflow condition of 5 m/s wind flowing over higher roughness. These combinations yielded eight unique flow configurations representing the WindEEE PIV test cases described throughout this work, as listed in Table 1.

4.2 WindEEE inflow parameters

Cobra Probe measurements taken at the upwind reference position were used to determine inflow conditions, whereby mean speed, TKE, Reynolds shear stress and integral length scales were of primary interest for the present study. Upwind mean speed S_0 and TKE $\overline{k_0}$ are shown in Figure 4, along with the full-scale measurements at M0 (Berg et al., 2011). Inflow profiles of Reynolds shear stress and integral length scales are shown in Figure 5. Reynolds number was calculated according to:

$$Re = \frac{U_h h}{\nu} \quad (5)$$

where the characteristic length h is the hill height, U_h is the inflow streamwise velocity at h , and ν is the kinematic viscosity of air. The Reynolds numbers in Table 1 use the model hill height $h = 0.468$ m. For the test cases with the same fan configuration but different roughness configuration, Reynolds number was almost identical. Inflow turbulence intensity at hill height $I_{u_{h0}}$ was approximately 0.13 for all WindEEE test cases. Boundary layer height δ was taken as the height at which the mean streamwise velocity was equal to $0.99U_\infty$, where U_∞ is the freestream velocity. The ratio of boundary layer height to hill height δ/h ranged from 3.3 to 3.6 for the WindEEE cases.

For the present study, which focuses mainly on how inflow conditions affect flow behaviour over the escarpment, the means by which the inflow parameters are calculated are important, as there is often some variability depending on the method of calculation. For example, friction velocity u_τ can be determined using several different methods, which often show

Deleted: 4.1 WindEEE inflow profiles¶

Deleted: .1

Deleted: Fan

Deleted: upstream

Deleted: upstream

Deleted: the

Deleted: upstream

Deleted: as

Deleted: and

Deleted: ,

Deleted: the

Deleted: upstream

Deleted: 1.

Deleted: Calculation of

Deleted: Reynolds number, friction velocity and surface roughness

Deleted: u_τ

Deleted: The inflow parameters for the WindEEE experiment in Table 1 were determined from the upstream reference Cobra Probe data.

Deleted: $Re = \frac{U_h h}{\nu}$

Deleted: $Re = \frac{U_h h}{\nu}$

Deleted: U_h

Deleted: ν

Deleted: at 20°C i.e. 1.50×10^{-5} m/s²

Deleted: Table 1

Deleted: upstream

Deleted: upstream

considerable differences between them (Weber 1999). To compare the variability of the resulting normalized inflow profiles for the WinEEE experiment, the friction velocity was calculated using four different methods. For Method 1, friction velocity was calculated according to Eq. 6, as per Weber (1999) using only the longitudinal component of the Reynolds stress vector. This is analogous to the method used by Berg et al. (2011) to calculate friction velocity using data from the inflow reference mast M0 at a height of 5 m above sea level in the Bolund field campaign.

$$u_* = (-\overline{uw})^{1/2} \quad (6)$$

Method 2 adds the spanwise Reynolds stress component (Ly 1993, Weber 1999), and always produces a higher value of u_* than Method 1. It is similar to the method used in Bechmann et al. (2011) and is given by:

$$u_* = [(\overline{u'w'})^2 + (\overline{v'w'})^2]^{1/4} \quad (7)$$

- For Methods 1 and 2, a single reference value $u_{*0.5}$ was taken as the friction velocity at a reference height of $Z = 5$ m in full-scale (0.2 m in model-scale), consistent with the approach used by Bechmann et al. (2011) and Yeow et al. (2015). In an undisturbed boundary layer profile, the region of constant Reynolds shear stress has been shown to correspond to the equilibrium sub-layer where TKE production balances with dissipation (Tritton, 1977). For the WinEEE experiments, the three data points closest to the floor for each test case were found to be within this constant shear stress region (see Figure 5a). The reference height used for Methods 1 and 2, $Z = 5$ m in full-scale co-ordinates, falls within this region. For Method 3, estimation of effective roughness z_0 and friction velocity u_* were estimated using the standard approach for neutral stability conditions i.e. determining the linear line of best fit on a semi-log plot of $\ln(z)$ vs U , where the slope of the line is κ/u_* and the y-intercept is $\ln(z_0)$ (Manwell et al., 2009):

$$\ln(z) = \left(\frac{\kappa}{u_*}\right) U(z) + \ln(z_0) \quad (8)$$

- where z is the vertical height above the ground, $U(z)$ is the streamwise wind speed at that height, and the von Karman constant κ was considered to be 0.41. The line of best fit was drawn only through data points residing within the region of constant shear stress. Method 4 follows the approach of Akomah et al. (2011), where u_* is considered to be equal to the average of the u_* values at heights within the region of constant shear stress. The values of u_* estimated using each of the four methods are presented in Table 1. As the data shows, the difference between the highest and lowest estimate was relatively high, ranging from about 15% to 50% depending on the test case. The z_0 values shown in Table 1 were obtained using Method 3, and are presented in full-scale units. The values show a clear distinction between the RC1 cases ($z_0 \sim 10^{-3}$ m) and RC2 cases ($z_0 \sim 10^{-6}$ m). The RC1 cases fell within the fully aerodynamically rough regime, where friction Reynolds number $u_* z_0 \nu^{-1} \gg 1$ (see Table 1), as described by Bowen et al. (2003). Thus no dependence of z_0 on u_* is expected for these cases. The RC2 cases however fell within the aerodynamically smooth regime, where $u_* z_0 \nu^{-1} < 0.2$, therefore dependence of z_0 on u_* is expected. Values of $u_* z_0 \nu^{-1}$ for each test case are indicated in Table 1. The full-scale roughness measured at mast M0 was $z_0 = 3 \times 10^{-4}$ (Berg et al., 2011), so the U15RC1 case shows the closest match among the WinEEE test cases.

Deleted: upstream

Deleted: method

Deleted: , which is the same

Deleted: upstream

Deleted:

Deleted: $u_{*0.5}$

Deleted:

Deleted: method

Deleted: upstream

Deleted: were

Deleted: determined by fitting the streamwise velocity profile data within the logarithmic region to the standard logarithmic wind profile for neutral stability conditions

Deleted: $U(z) = \frac{u_*}{\kappa} \ln\left(\frac{z}{z_0}\right) \quad (8)$

Deleted: from

Deleted: $U(z)$

Deleted: Method 4 may be considered a combination of Methods 1 and 3, and follows the approach of Akomah et al. (2011)

Deleted: , who describe a region of constant shear stress corresponding to the equilibrium sub-layer where TKE production and dissipation balance. Figure 3a),

Deleted: and the

Deleted: value of

Deleted: u_*

Deleted: u_*

Deleted: friction velocity computed

Deleted: T

Deleted: Friction velocity is still calculated using Eq. 6, however unlike in Method 1 where a single data point was used, Method 3 uses multiple data points [1]

Deleted: z_0

Deleted: in Table 1

Deleted: $u_* z_0 \nu^{-1} \gg 1$

Deleted: u_*

Deleted: $u_* z_0 \nu^{-1} < 0.2$

Deleted: u_*

Deleted: $u_* z_0 \nu^{-1}$

Deleted:

4.3 Comparison between inflow profiles

When normalized by u_{*05} (Method 1), a clear separation is observed between the profiles with higher roughness (RC1) and those with lower roughness (RC2), with the RC2 group having higher normalized mean wind speed as well as TKE (see Figure 4). Comparison of the inflow mean speeds for the test cases with the full-scale data shows that all model-scale values are lower than the full-scale wind speeds, with the exception of U5RC2, whereas the normalized TKE profiles are all higher than the full-scale profile, illustrating the inherent difficulty in matching both the mean wind speed and TKE profiles with the full-scale values. The shape of the TKE profiles is in contrast to the wind-tunnel experiment conducted by Yeow et al. (2015) whose normalized TKE inflow profiles were lower than the full-scale values, and decreased with height. Most of the WindEEE normalized TKE profiles are relatively vertical between $z = 5$ m and $z = 12$ m which is consistent with the full-scale data, although having only two full-scale data points available from the reference mast M0 in the field campaign, none of which were above a height of 12 m (i.e. just above escarpment height), is a limiting factor in determining whether a good match to the full-scale conditions has been achieved. When normalized using Method 2 (not shown), profiles are similar to those shown for Method 1, but shifted slightly to the left, given the slightly higher values of u_{*} . There is also less separation between the RC1 and RC2 groups. Inflow profiles determined using Method 3 produce a better match to the full-scale data for mean speed for the RC1 group, although they remain higher for TKE. For the RC2 group, profiles remain slightly higher than full-scale for mean speed and are shifted even further to the right for TKE, due to the higher values of u_{*} . Profiles normalized using Method 4 are similar to those of Method 1, with profiles collapsing to a greater extent within the RC1 and RC2 groups.

Upwind Reynolds shear stress $-\overline{uw}$ as a function of height is shown in Figure 5 for the WindEEE cases. Magnitudes of shear stress (Figure 5a) are shown to increase with Reynolds number, and the higher roughness (RC1) cases exhibit consistently higher shear stress than the lower roughness (RC2) cases. When normalized by u_{*05}^2 , where u_{*} is calculated using Method 1 (Figure 5b), the shear stress profiles generally tend to collapse, with some deviations, notably the lower values of the U5 cases at higher elevations, and the higher value of the U15RC1 case near hill height ($Z = 11.73$ m). The value of the non-dimensional inflow Reynolds shear stress for U15RC1 near hill height is about 60% higher than that of U14RC1. The U15RC1 case also shows a local peak in skewness (in the negative direction) near hill height which was not observed for the other cases.

Inflow integral length scales in the streamwise direction L_{uu} are shown in Figure 5c. Time scales were determined by computing the integral of the autocorrelation function, up to the first zero crossing of the x-axis, and, invoking Taylor's hypothesis, i.e. multiplying by mean velocity U , to yield the length scales. There is a noticeable trend among the uniform profiles of increasing length scale with Reynolds number, however the U15RC1 shear case has the lowest length scales among all RC1 cases despite having the highest Reynolds number. The difference is particularly large at hill height. Based on the results presented in Figure 4 and Figure 5, it can be inferred that the inflow profile for the shear case is characterized by eddies with smaller average size and higher levels of momentum transport than for the uniform fan cases, particularly near hill height.

Deleted: 1.

Deleted: Cobra Probe measurements of upstream reference mean flow speed S_0 and TKE $\overline{u^2}$, normalized by the u_{*05} values estimated using method 1, are shown in Figure 2a, along with the full-scale measurements at M0 (Berg et al., 2011). A

Deleted: upstream

Deleted: s

Deleted: ¶

The results for

Deleted: with all profiles

Deleted: u_{*} ,

Deleted:

Deleted: are somewhat different, with the

Deleted: profiles showing a better match to the full-scale data for mean speed,

Deleted: still

Deleted: ,

Deleted: but significantly higher values f

Deleted: both

Deleted: TKE,

Deleted: u_{*} ,

Deleted: quite

Deleted: slightly more

Deleted: $-\overline{uw}$

Deleted: u_{*05}^2

4.4 BLWTL inflow profiles

The key inflow parameters for the BLWTL Cobra Probe measurements are shown in Table 1. Friction velocity was calculated according to each of the four methods outlined above, and z_0 was estimated using Method 3. Friction Reynolds number $u_* z_0 \nu^{-1}$ was 1.39, thus the inflow was in the transitionally rough regime, again (Bowen, 2003). Figure 6 shows inflow profiles from the BLWTL Cobra Probe data, measured at the inflow reference location of $X = -1.82$ m in model scale ($X = -182$ m in full-scale). Mean speed and TKE were normalized by friction velocity calculated using the four methods identified above. The results show that the profiles for Methods 1–3 are quite close to each other, and higher than the full-scale data points, while Method 4, with higher u_* , produced profiles shifted slightly to the left, and matched particularly well with the full-scale data. The reduction in normalized TKE with height was consistent with the inflow profiles measured by Yeow et al. (2015), but different from the WindEEE and full-scale TKE profiles, which were relatively constant with height over the measurement region. Similarities between the inflow profile of the BLWTL experiment and those of Yeow et al. (2015) were expected given that u_* and z_0 are almost of the same order for both studies, making $u_* z_0 \nu^{-1}$ similar. Inflow turbulence intensity was roughly 0.1, and δ/h was 10.6 for the BLWTL case (see Table 1).

5 Results and Discussion

The results are divided into two main sections: analysis of the mean flow behaviour, and analysis of the turbulent flow behaviour. Most of the results presented were obtained from the WindEEE PIV data, while some additional data is presented from the WindEEE and BLWTL Cobra Probe measurements.

5.1 Mean flow behaviour

The streamlines of the mean flow field are shown in Figure 7 for U5, U8, U14 and U15 cases at the higher roughness configuration (RC1). Mean streamlines for the RC2 cases (not shown) were nearly identical to those shown for RC1. The streamlines depict a region of flow acceleration over the escarpment leading edge, and deceleration moving downwind. Streamlines for the three uniform cases collapse tightly, while the U15RC1 shear case shows higher speeds over the hill. None of the streamlines for the mean flow showed clear evidence of recirculation. Even upon close inspection of the mean flow field in the vicinity of the escarpment, it is difficult to ascertain whether the negative values of streamwise velocity observed in the separated flow region are indicative of recirculation or due to other factors such as near-wall effects. Furthermore, the higher uncertainty in this region, due to very high velocity gradients, prohibits drawing a firm conclusion about the presence of a recirculation zone. An analysis of the probability of occurrence of negative instantaneous velocity vectors in the streamwise direction for each case was conducted in a manner analogous to Yeow et al. (2015). For all cases, it was observed that, apart from a very small near-surface region close to the escarpment leading edge, the probability of occurrence of negative vectors was less than 1%, which further decreased with an increase in downwind distance and height. This is consistent with the results

Deleted: 2

Deleted: shows the main test

Deleted: as per

Deleted: Figure 2b

Deleted: upstream

Deleted:

Deleted: profiles, as well as the BLWTL Cobra Probe

Deleted: as necessary

Deleted: upstream velocities of

Deleted: any

Deleted: The small region between $-55.25 \text{ m} < X < -55 \text{ m}$ and $11.75 \text{ m} < Z < 12 \text{ m}$ appears to show some vectors of low magnitude pointing horizontally in the reverse streamwise direction,

Deleted: however

presented by Yeow et al. The U15RC1 shear case had relatively higher occurrence of negative vectors over a wider region above the hill surface compared to the uniform cases U14RC1 and U14RC2, which were similar to each other.

Contour plots of speed-up ratio for U14RC1 (Figure 8a) and U15RC1 (Figure 8b) clearly illustrate the speed-up region near the escarpment, and the re-establishment of the boundary layer on top of the hill. The U5 and U8 contour plots (not shown) were very similar to the U14 case, analogous to the similarity observed in the streamline plots between the three cases. While speed-up is generally similar between the U14RC1 and U15RC1 cases, slightly higher values are observed for U15RC1 in the vicinity of the escarpment, and this case also shows a more elongated, oblong shape of the speed-up region at the escarpment edge. Reynolds number for the two flows did not differ by a great amount (4.57×10^5 for U14RC1 vs. 5.21×10^5 for U15RC1), i.e. much less than the difference in Reynolds number between the U5RC1 and U14RC1 cases, indicating that the difference in normalized mean flow behaviour can be most likely attributed to the higher inflow shear for the U15 case.

5.2 Mean flow comparison to previous experiments

In addition to the full-scale measurements, results from previous physical modelling of the Bolund Hill are available in the literature for comparison to the present results. These include wind tunnel and water channel experiments from the blind comparison (Bechmann et al., 2011), wind tunnel PIV and 3-component hotwire (3CHW) tests conducted by Yeow et al. (2015) at 1:115 scale at two Reynolds numbers (4.15×10^4 and 8.21×10^4), and wind-tunnel PIV modelling conducted by Conan et al. (2016) at 1:500 scale and $Re = 2.1 \times 10^4$. Benchmarking the WinDEEE Cobra Probe and PIV, and BLWTL Cobra Probe results from the present experiment against these datasets provides some validation of the present experimental procedure, and also serves as an initial point of discussion on the differences between conducting the same experiment at three scales, i.e. wind tunnel ($Re \sim 10^4$), WinDEEE ($Re \sim 10^5$) and full-scale ($4.25 \times 10^6 < Re < 1.02 \times 10^7$).

Figure 9 shows horizontal profiles of the wind speed-up at two locations corresponding to the full-scale mast measurement positions at heights of $z = 2$ m (Figure 9a) and $z = 5$ m (Figure 9b) above hill surface level. Results from the WinDEEE PIV data and those of previous experiments mentioned above are presented for comparison. The topography and the mast locations are shown in Figure 9c for reference. Figure 10 shows the comparison for vertical profiles at three locations along the hill. The U14RC1 and U15RC1 cases were selected from the eight WinDEEE PIV cases as representative cases to avoid clutter; the differences between the WinDEEE cases are discussed further below. From the horizontal profiles, agreement is generally quite good between all datasets at $z = 5$ m, whereas significant variability is observed at $z = 2$ m, which is within the highly turbulent shear layer observed in the TKE contour plots (see Figure 14), also referred to by Yeow et al. (2015) and observed in the scanning Lidar data (Lange et al., 2016). Similarly for the vertical profiles, better agreement is observed at position M7 upwind of the escarpment (Figure 10a), with greater variability seen at the other two positions (Figure 10b, c), particularly at $z < 5$ m.

5.3 Influence of inflow parameters on the mean flow

The WinDEEE experiments were conducted by changing one variable at a time, allowing for the influence of a particular modifier to the flow to be isolated and the resultant flow behaviour analysed. In this section, the isolated effects of Reynolds

Deleted: upstream

Deleted: ,

Deleted: horizontal

Deleted: all of

Deleted: also

Deleted: upstream

Deleted: with higher variability

Deleted: Reynolds number, upstream roughness, inflow profile and model resolution

number, inflow roughness, shape of the inflow profile, and model and measurement resolution, on the mean flow behaviour are discussed.

5.3.1 Effect of Reynolds number and inflow wind profile on the mean flow

The horizontal profiles of the wind speed-up for four Reynolds numbers at full-scale heights of $z = 5$ m and $z = 2$ m above the island surface level are shown at two inflow roughness cases; higher roughness RC1 in Figure 11a and lower roughness RC2, in Figure 11b. Full-scale data are also plotted for reference. The normalized mean flow results show almost identical trends for the three uniform fan speed cases (U5, U8 and U14), for both RC1 and RC2. This indicates an absence of Reynolds number effects on the mean flow over a Reynolds number range of 1.7×10^5 to 4.6×10^5 . The U15 case, however, with modified inflow shear profile, displays different behaviour than the uniform fan speed cases. The U15RC1 peak speed-up is higher at the escarpment compared to the other RC1 cases, by about 9% at $z = 5$ m, and by 7% at $z = 2$ m, then changes to become relatively lower further downwind. For the U15RC2 case, speed-up is generally equal or slightly lower than the other RC2 cases at $z = 5$ m (Figure 11c), and lower along horizontal locations at $z = 2$ m (Figure 11d).

In Figure 12, a similar comparison is made along the vertical profiles at M6. Results show a trend similar to that observed for the horizontal profiles, i.e. little difference among the mean flow profiles at three uniform fan speed cases, with the RC2 profiles collapsing more closely. Again the U15RC1 case (Figure 12a) shows different behaviour, with higher speed-up than the other cases (i.e. about 9% higher than U5RC1 at $z = 5$ m), and also shows a better match to the full-scale data points. For RC2 (Figure 12b), the U15 case generally collapses with the others, with the only difference being the relatively lower speed-up for $z < 4$ m (i.e. 12% lower than U5RC1 at $z = 2$ m) which is again closer to the full-scale behaviour.

5.3.2 Effect of inflow roughness on the mean flow

The comparison of speed-up profiles at the same Reynolds number but different roughness configuration provides an insight into the effect of inflow surface roughness, z_0 , on the mean flow behaviour over the escarpment. Such analysis can be obtained by comparing the vertical profiles in Figure 11 and Figure 12 for two roughness cases. Generally, the speed-up profiles for the same Reynolds number under the two different inflow roughness configurations were similar, despite the RC1 z_0 value being higher than the RC2 value by about three orders of magnitude. For the uniform fan speed cases, the peak speed-up at $z = 2$ m was higher for the RC2 cases than RC1 by margins of about 6%, 8% and 5% for U5, U8 and U14, respectively. In the horizontal profiles, a lower inflow z_0 was found to generate a roughly 5% higher peak speed-up at the escarpment, with diminishing effect moving downwind. A different trend was observed for the U15 cases, where a slight reduction in peak speed-up of about 3% was observed at the escarpment for the RC2 case, with the difference between the two roughness cases growing slightly moving downwind. At M6, the lower roughness cases showed a slightly better match to the full-scale data (see Figure 12).

Deleted: upstream

Deleted: scale

Deleted: &

Deleted: .

Deleted:

Deleted: upstream

Deleted: effects

Deleted: upstream

Deleted: of the

Deleted: normalized mean flow

Deleted: downstream

Deleted:

Deleted: Upstream

Deleted: effects

Deleted: upstream

Deleted: It is observed at that in general

Deleted: at the

Deleted: heights

Deleted: relatively significant difference between

Deleted: s,

Deleted: which was

Deleted: larger for RC1 compared to RC2

Deleted: The

Deleted: difference in

Deleted: for two roughness configurations

Deleted: For the uniform fan speed cases,

Deleted: upstream

Deleted: z_0

Deleted: downstream

Deleted: slightly

Deleted: downstream

5.3.3 Effect of measurement and model resolution on the mean flow

The Cobra Probe measurements were taken under identical fan speed and roughness element configurations as the PIV cases, although not simultaneously, and therefore from the mean flow perspective, they provide useful independent evidence for Reynolds number dependence. A comparison of speed-up ratio between PIV and Cobra Probe measurements, for the three uniform fan speed cases, for both roughness configurations, along the same vertical profile at M6, is shown in Figure 13. The results show very good matching between the two methods of measurements, with some systematic bias error resulting in slightly lower speed-up for Cobra Probe measurements, perhaps due to PIV calibration. Notwithstanding, very little evidence of Reynolds number dependence is observed between the Cobra Probe profiles, confirming the trends observed earlier in the PIV data.

Now turning to the discussion on the effect of model resolution on the mean flow, it is generally accepted by wind tunnel modellers that for bluff bodies submerged in deep boundary layers, Reynolds number effects are negligible for $Re > (2-3) \times 10^4$, particularly for flows without steady vortical regions (Lim et al., 2007). The BLWTL case and the WindEEE cases under uniform fan speed, as well as the two tests conducted by Yeow et al. (2015), at $Re = 4.15 \times 10^4$ and $Re = 8.21 \times 10^4$, were all above this threshold. The WindEEE uniform fan speed cases are consistent with the literature in showing a lack of Reynolds number dependence. One would therefore expect to see Reynolds number independence preserved between normalized speed-up profiles at the BLWTL scale (1:100) and the WindEEE scale (1:25), measured using the same instrument, under similar inflow conditions. Such a comparison is made in Figure 10, which shows speed-up profiles from Cobra Probe measurements for the BLWTL and WindEEE cases. Some discrepancies are observed, particularly at M6 at $z < 5$ m, where the WindEEE U14RC1 measurements were found to be higher than the BLWTL values by about 5%, and a better match to the full-scale measurements. It can therefore be concluded that the discrepancies between Cobra Probe results observed at the two different model resolutions are unlikely to be due to Reynolds number effects but rather caused by other factors such as proximity of the measurement instrument to the surface, size of the instrument relative to the model and surface roughness of the model.

5.4 Turbulent flow behaviour

The results for the turbulent flow are presented in a similar manner as for the mean flow behaviour in Section 5.1. To obtain a better insight into the overall turbulent flow behaviour, contour plots of the change in TKE $\Delta \bar{k}$ over the same area as in the earlier speed-up plots, are shown in Figure 14a and Figure 14b for U14RC1 and U15RC1, respectively. A highly turbulent region is observed at the escarpment, which dissipates moving downwind. Several significant differences are observed between the two cases, with U15RC1 having a larger high-intensity TKE region near the escarpment, and a longer and higher wake. The TKE increment also begins further upwind of the escarpment. The U5 and U8 TKE contour plots (not shown) were similar to the U14 case, but with slightly lower values of $\Delta \bar{k}$ throughout.

- Deleted: Given that the BLWTL tests were conducted at Reynolds number above this threshold (3.6×10^4), as were the two tests o
- Deleted: with
- Deleted: upstream
- Deleted: can be made using results
- Deleted: illustrates the
- Deleted: at
- Deleted: closer
- Deleted: . Assuming that the Reynolds number threshold (Lim et al., 2007) is applicable under present conditions,
- Deleted: i
- Deleted: ,
- Deleted: not
- Deleted: the
- Deleted: are
- Deleted: related to model and measurement resolution
- Deleted: -
- Deleted: intensity
- Deleted: stream
- Deleted: region
- Deleted: upstream

5.5 Turbulent flow comparison with previous experiments

A comparison of horizontal profiles of WindEEE TKE increment against previous experimental results, at $z = 5$ m and $z = 2$ m above surface level is presented in Figure 15. The two WindEEE PIV profiles stand out from the others as they feature a shallow hump between M6 and M3 at $z = 5$ m, and a sharp spike between the escarpment and M6 at $z = 2$ m. Both features are much more pronounced for the U15RC1 case compared to U14RC1. The Cobra Probes were not able to capture the TKE spike to the same extent, also observed in the vertical profile at M6 (see Figure 16). As was the case for speed-up ratio, the U15RC1 case was observed to better approximate the full-scale values of $\Delta \bar{k}$ than the others.

5.6 Influence of inflow parameters on the turbulent flow

Similar to the mean flow analysis, the effects of inflow Reynolds number, wind shear profile, upwind roughness and model and measurement resolution on the turbulent flow behaviour are discussed in the following sections.

5.6.1 Effect of Reynolds number and inflow wind profile on the turbulent flow

Figure 17(a,b) and Figure 17(c,d) show horizontal profiles of $\Delta \bar{k}$ for the four wind speed cases at RC1 and RC2, respectively. The two U15 profiles stand out from the other cases – the peak TKE increment for U15RC1 was about 200% higher than that for U14RC1 – and the discrepancy is much more significant than it was for the speed-up ratio. The TKE results indicate that changes in the flow behaviour above the escarpment can be attributed to changes in the inflow parameters, and elicit the question of which are the relevant non-dimensional parameters. As noted previously, the only difference between the U14 and U15 cases was the 50% increase in operating speed of fans in the third row from the floor compared to all other fans. This induced a strong shearing effect at the interface between fan rows 2 and 3, about two metres above the floor in model scale, or 50 m in full-scale, just over four times hill height. The higher fan speed in the third row produced a slightly higher Reynolds number at hill height for the U15 cases than for the U14 cases, but the Reynolds number difference was small compared to the difference between the uniform cases, and thus unlikely to be a significant contributor to the TKE difference. Similarly, the non-dimensional TKE profiles (see Figure 4) show little difference between the U15RC1 case and the three other RC1 cases. As discussed, more significant differences between the shear and uniform cases were observed among the inflow profiles of Reynolds shear stress and integral length scale (see Figure 4 and Figure 5), parameters which are known to influence turbulence behaviour and momentum transport. As shown by the inflow profiles, by the time the flow reaches the upwind reference position, the shearing effect introduced at the fan wall for the U15 shear case appears to produce turbulence characterized by smaller eddies with higher momentum compared to the uniform cases, at the hill height. The results highlight the important fact that a relatively small change to the inflow wind shear profile, even well above the height of the topography, can significantly affect the turbulent flow behaviour near the surface.

Among the three uniform fan speed horizontal profiles, there is little difference in TKE increment at $z = 5$ m, however, at $z = 2$ m, peak TKE increment for the U14RC1 case is about 17% higher than U5RC1 and 29% higher than U8RC1 the other

Deleted: 5.6 Influence of Reynolds number, upstream roughness, inflow profile and model resolution on turbulent flow

Deleted: .1

Deleted: upstream

Deleted: effects

Deleted: .

Deleted: – the peak TKE increment for U15RC1 was about 200% higher than that for U14RC1

Deleted:

Deleted: earlier

Deleted: the

Deleted: by 50%

Deleted:

Deleted: is

Deleted: the

Deleted: is only about one third of

Deleted: U8 and U14

Deleted: Thus the difference in profile shapes at heights of $z = 2$ m and $z = 5$ m above the island appears to be attributable mainly to the induction of the strong shearing effect between fan rows 2 and 3, despite the fan row interface being about two metres off the tunnel floor in model scale, or 50 m in full-scale, more than four times the hill height.

Deleted: There do not appear to be any indications of this behaviour from the inflow profiles, at least not from the normalized mean wind speed and TKE profiles, where the U15RC1 inflow profile is generally similar to the others in the RC1 group, regardless of which method was used to determine U_a . While analyzing the WindEEE inflow profiles up to a height of about 100 m in full-scale would have provided a better picture of the difference in inflow conditions between the U14 and U15 cases, the comparison with upstream data from the field campaign at mast M0 at these heights not being available would preclude the interpretation of this better fit between the U15 case and full scale. Nevertheless, t

Deleted: model

Deleted: alter

Deleted: hill

Deleted: between the escarpment and M6

two cases. A similar trend is observed for the RC2 cases, where peak TKE increment for U14RC2 is about 25% higher than U5RC2 and 27% higher than U8RC2, indicating a possible Reynolds number dependence in this region. Vertical profiles of TKE increment at M6 were also plotted (see Figure 18) for the RC1 and RC2 cases. The profiles for the uniform fan speed cases again tended to collapse, with the exception of the U14 cases below $z = 2$ m. Peak TKE increment at M6 for U14RC1 was about 7% higher than U5RC1 and 13% higher than U8RC1 and the peak value for U14RC2 was about higher 10% higher than U5RC2 and 14% higher than U8RC2.

5.6.2 Effect of inflow roughness on the turbulent flow

The influence of inflow roughness can be seen in Figure 18. For the uniform fan speed cases, configuration RC2, with lower z_0 , appeared to cause a moderate increase in peak TKE increment of about 40% at M6 compared to RC1, while little difference in TKE was observed between the two U15 cases. A comparison of horizontal profiles of RC1 and RC2 cases (not shown) showed higher TKE increment for the RC2 cases at all positions downwind of about $X = -50$ m, particularly for the $z = 2$ m profile. The difference in peak TKE increment at different roughness configurations was about 13%, 28% and 27% for U5, U8 and U14, respectively, with the RC2 value being higher in each case. A negligible difference in TKE increment was generally observed between the two U15 cases at most locations. Peak TKE increment at $z = 5$ m was about 7% higher for U15RC1 than U15RC2. Thus, a change in the inflow roughness was observed to have a moderate effect on the TKE increment for the uniform fan speed cases, while the shear case appeared to be more resilient to changes in the inflow roughness.

5.6.3 Effect of model and measurement resolution on the turbulent flow

A comparison of TKE increment between WindEEE PIV and WindEEE Cobra Probe measurements, for the same Reynolds number, and for the same vertical profile at M6 is presented in Figure 19. Strong similarity is observed between the two types of measurements, from the top of the measurement window down to about $z = 3$ m, at which point some divergence is observed, with the Cobra Probes being unable to capture the spike in TKE to the same extent as the PIV measurements, which may be partially due to the reverse flow at this location. Although Reynolds number effects may contribute to the higher TKE for the U14 PIV profile at $z < 3$ m, Reynolds number independence appears to be almost completely preserved among the three Cobra Probe profiles all the way down to the hill surface. This observation once again raises the question of why the measurements using the 1:25 scale model at WindEEE are higher than those using the 1:100 BLWTL model, and why they more closely approximate the full-scale measurements, as seen in Figure 16b at M6. The resolution of the model, and the ability to measure closer to the surface level thus appears to be one contributing factor. A separate study by Lange et al. recently submitted for publication investigates the effect of sharpening the escarpment edge. Preliminary analysis shows that this has a significant effect on the flow behaviour in the near-surface region.

Deleted: for both RC1 and RC2

Deleted: change in

Deleted: ,

Deleted: ,

Deleted: where a slight increase in

Deleted: was observed

Deleted: Consistently higher TKE is observed for the U15RC1 case, and again the U15 results are closer to the full scale data.

Deleted: 6

Deleted: 2

Deleted: Upstream

Deleted: effects

Deleted: upstream

Deleted: at M6

Deleted: at $z < 5$ m

Deleted: downstream

Deleted: at

Deleted: ,

Deleted: at

Deleted: for these cases

Deleted: The U15 case showed

Deleted: for the two roughness cases with a weak trend of a decrease in TKE increment with the roughness.

Deleted: upstream

Deleted: n

Deleted: case with modified

Deleted: profile

Deleted: 6.3

Deleted: preserved

Deleted: of

Deleted: over

Deleted: are closer to

Deleted: large

Deleted: close to the top of the hill

6 Conclusions

An experimental investigation to characterize the mean and turbulent flow behaviour over a steep escarpment, represented by the topography of Bolund Hill, was conducted at two distinct scales (1:100 and 1:25) by means of wind tunnel testing using PIV and Cobra Probes. A range of Reynolds numbers, boundary layer inflow profiles, and inflow roughness values were examined. At WindEEE, three uniform fan profiles and one modified shear profile were tested at two different inflow roughness configurations, for a total of eight unique sets of inflow conditions. These results, presented in the form of normalized speed-up and TKE increment, were compared to each other and to measurements from the field campaign and previous experimental work, to attempt to establish the relative contributions of the key inflow parameters to flow behaviour over the hill.

Mean flow behaviour was found to be generally resilient to changes in inflow conditions, with negligible Reynolds number dependence observed between the uniform fan speed cases, across a Reynolds number range of 1.7×10^5 to 4.6×10^5 , for both Cobra Probe and PIV measurements. Slight modification of the speed-up behaviour was observed for the shear profile case, but this did not appear to be related to the Reynolds number. Lower inflow roughness was observed to cause a marginal increase in peak speed-up at the escarpment for the uniform fan speed cases, whereas for the shear case, lower roughness caused a slight reduction in speed-up, particularly near the surface. Slightly higher values of speed-up were observed for the 1:25 scale model compared to the 1:100 model, which are attributed to factors such as proximity of the instrument to the model surface, or model surface roughness.

From the turbulent flow field data represented in the form of TKE increment, a weak Reynolds number dependence was observed whereby TKE increased with an increase in the Reynolds number, but only in the highly turbulent shear layer near the escarpment. Lower inflow roughness also served to moderately increase peak TKE among the uniform fan speed cases. A much more significant TKE increase was observed for the shear profile case, where peak normalized TKE at a height of 2 m above the hill increased by over 200% compared to the uniform fan speed case at a similar Reynolds number. Through modification of the inflow shear profile, the WindEEE facility was able to produce higher TKE increments, which were closer to full-scale measurements than those that had been achieved previously in conventional wind tunnels, indicating a promising trend for future work in characterizing flow over topography.

For the wind developer, these results reinforce the need for very careful and detailed assessment of wind turbine inflow conditions in complex topography, as even very small changes to the inflow profile used in the modelling process can cause highly significant changes at turbine height, particularly in the turbulent flow behaviour.

Acknowledgements: The present work is supported by NSERC, CFI and UWO, in addition to the Center for Computational Wind Turbine Aerodynamics and Atmospheric Turbulence funded by the Danish Council for Strategic Research, grant number 09-067216.

Deleted: Particle Image Velocimetry (

Deleted:)

Deleted: upstream

Deleted: the

Deleted: research facility

Deleted: upstream

Deleted: upstream

Deleted: upstream

Deleted: upstream

Deleted: upstream

Deleted: that

Deleted: , and higher

References

- Akomah, A., Hangan H., and Naughton, J.: Very high Reynolds number boundary layers over 3D sparse roughness and obstacles: the mean flow, *Experiments in Fluids*, 51, 743–752, doi: 10.1007/s00348-011-1086-2, 2011.
- Ayotte, K. W. and Hughes, D. E.: Observations of boundary-layer wind-tunnel flow over isolated ridges of varying steepness and roughness, *Boundary-Layer Meteorology*, 112, 525–556, doi: 10.1023/B:BOUN.0000030663.13477.51, 2004.
- 5 Ayotte, K. W.: Computational modelling for wind energy assessment, *Journal of Wind Engineering and Industrial Aerodynamics*, 96, 1571–1590, doi: 10.1016/j.jweia.2008.02.002, 2008.
- Ayotte K. W., Sullivan P. P., and Patton E. G.: LES and wind tunnel modelling over hills varying steepness and roughness, *Fifth International Symposium on Computational Wind Engineering (CWE2010)*, Chapel Hill, North Carolina, USA, May 10 23–27, 2010.
- Bechmann A., Sørensen, N. N., Berg J., Mann J., and Réthoré, P.-E.: The Bolund experiment, part II: blind comparison of microscale flow models. *Boundary-Layer Meteorology*, 141:245–271, doi: 10.1007/s10546-011-9637-x, 2011.
- Berg, J., Mann, J., Bechmann, A. Courtney, M.S., and Jørgenson, H.E.: The Bolund experiment, part I: flow over a steep, three-dimensional hill. *Boundary-Layer Meteorology*, 141, 219–243, doi: 10.1007/s10546-011-9636-y, 2011.
- 15 Botta, G., Cavaliere, M., Viani, S., and Pospíšil, S.: Effects of hostile terrains on wind turbine performances and loads: The Acqua Spruzza experience, *Journal of Wind Engineering and Industrial Aerodynamics*, 74–76, 419–431, doi: 10.1016/S0167-6105(98)00038-5, 1998.
- [Bowen, A.J.: Modelling of strong wind flows over complex terrain at small geometric scales, *Journal of Wind Engineering and Industrial Aerodynamics*, 91, 1859–1871. doi: 10.1016/j.jweia.2003.09.029, 2003.](#)
- 20 Chock, G. and Cochran, L.: Modeling of wind speed effects in Hawaii, *Journal of Wind Engineering and Industrial Aerodynamics*, 93, 623–638, doi: 10.1016/j.jweia.2005.06.002, 2005.
- Conan, B., Chaudhari, A., Aubrun, S., van Beeck, J., Hämäläinen, J., and Hellsten, A.: Experimental and numerical modelling of flow over complex terrain: the Bolund Hill. *Boundary-Layer Meteorology*, 158, 183–208, doi: 10.1007/s10546-015-0082-0, 2016.
- 25 Hangan, H.: The Wind Engineering Energy and Environment (WindEEE) dome at Western University, Canada. *Wind Engineers, JAWE*, 39, 4(141), doi: 10.5359/jawe.39.350, 2014.
- Lange, J., Mann J., Angelou, N., Berg, J., Sjöholm, M., and Mikkelsen, T.: Variations of the wake height over the Bolund escarpment measured by a scanning Lidar, *Boundary-Layer Meteorology*, 159, 147–159, doi: 10.1007/s10546-015-0107-8, 2016.
- 30 Lim, H. C., Castro, I. P., and Hoxey, R. P.: Bluff bodies in deep turbulent boundary layers: Reynolds-number issues. *Journal of Fluid Mechanics*, 571, 97–118, doi: 10.1017/S00222112006003223, 2007.

- Ly, L.N.: Effect of the angle between wind stress and wind velocity vectors on the aerodynamic drag coefficient at the air-sea interface, *Journal of Physical Oceanography*, 23, 159–163, doi: 10.1175/1520-0485(1993)023<0159:EOTABW>2.0.CO;2, 1993.
- Manwell, J. F., McGowan, J. G., and Rogers, A. L.: *Wind energy explained*, 2nd Ed. Wiley, 2009.
- 5 McAuliffe B.R. and Larose G.L.: Reynolds-number and surface-modeling sensitivities for experimental simulation of flow over complex topography. *Journal of Wind Engineering and Industrial Aerodynamics*, 104–106: 603–613, doi: 10.1016/j.jweia.2012.03.016, 2012.
- Palma, J. M. L. M., Castro, F. A., Ribeiro, L. F., Rodrigues, A. H., and Pinto, A. P.: Linear and nonlinear models in wind resource assessment and wind turbine micro-siting in complex terrain, *Journal of Wind Engineering and Industrial*
- 10 *Aerodynamics*, 96, 2308–2326, doi: 10.1016/j.jweia.2008.03.012, 2008.
- Peinke, J., Barth, S., Böttcher, F., Heinemann, D., and Lange, B.: Turbulence, a challenging problem for wind energy, *Physica A*, 338, 187–193, doi: 10.1016/j.physa.2004.02.040, 2004.
- Rasouli, A., and Hangan, H.: Micro-scale CFD simulation for wind mapping over complex topographic terrains, *Journal of Solar Energy Engineering*, 135(4), 041005, 18 pages, doi: 10.1115/1.4024124, 2013.
- 15 Rasouli, A., Hangan, H., and Siddiqui, K.: PIV measurements for complex topographic terrain, *Journal of Wind Engineering and Industrial Aerodynamics*, 97, 242–254, doi: 10.1016/j.jweia.2009.06.010, 2009.
- Salmon, J. R., Teunissen, H. W., Mickle, R. E., and Taylor, P. A.: The Kettles Hill project: field observations, wind-tunnel simulations and numerical model predictions for flow over a low hill, *Boundary-Layer Meteorology*, 43, 309–343, doi: 10.1007/BF00121711, 1988.
- 20 Siddiqui, K., Loewen, M. R., Richardson, C., Asher, W. E., and Jessup, A. T.: Simultaneous particle image velocimetry and infrared imagery of microscale breaking waves, *Physics of Fluids*, 13, 1891–903, doi: 10.1063/1.1375144, 2001.
- Taylor, P. A. and Teunissen, H. W.: The Askervein Hill project: overview and background data, *Boundary-Layer Meteorology*, 39, 15–39, doi: 10.1007/BF00121863, 1987.
- [Tritton, D.J.: *Physical Fluid Dynamics*, New York: Van Nostrand Reinhold Co., 1977.](#)
- 25 Walmsley, J. L. and Taylor P. A.: Boundary-layer flow over topography: impacts of the Askervein study, *Boundary-Layer Meteorology*, 78, 291–320, doi: 10.1007/BF00120939, 1996.
- Weber, R. O.: Remarks on the definition and estimation of friction velocity, *Boundary Layer Meteorology* 93, 197–209, doi: 10.1023/A:1002043826623, 1999.
- Yeow T.S., Cuerva-Tejero, A., and Perez-Alvarez J.: Reproducing the Bolund experiment in wind tunnel, *Wind Energy*, 18,
- 30 153–169, doi: 10.1002/we.1688, 2015.

Table 1. Inflow parameters for WindEEE and BLWTL test cases

Parameter	U5RC1	U5RC2	U8RC1	U8RC2	U14RC1	U14RC2	U15RC1	BLWTL	Full Scale
Fan configuration	All fans 20%	All fans 20%	All fans 30%	All fans 30%	All fans 50%	All fans 50%	Fan rows 1,2,4: 50% Fan row 3: 75%	Single fan	—
U_h (m/s)	5.42	5.49	8.70	8.57	14.60	14.69	15.60	4.65	5.43–13.0
Re_h	1.70×10^5	1.72×10^5	2.72×10^5	2.68×10^5	4.57×10^5	4.60×10^5	5.21×10^5	3.63×10^4	$4.25 - 10.2 \times 10^4$
z_0 (m)	1.84×10^{-3}	1.96×10^{-6}	1.98×10^{-3}	4.12×10^{-7}	2.72×10^{-3}	2.29×10^{-6}	2.87×10^{-4}	1.27×10^{-4}	6×10^{-4}
$u_{-0.5}$ (m/s) Method 1	0.314	0.229	0.488	0.373	0.856	0.668	0.992	0.164	0.47
$u_{-0.5}$ (m/s) Method 2	0.326	0.252	0.489	0.415	0.869	0.361	1.070	0.165	—
u_* (m/s) Method 3	0.254	0.145	0.409	0.203	0.723	0.392	0.650	0.164	—
u_* (m/s) Method 4	0.333	0.231	0.505	0.355	0.848	0.640	0.970	0.186	—
$u_* z_0 V^{-1}$	37.1	0.03	62.1	0.01	149.5	0.10	18.3	1.34	18
l_{u0}	0.132	0.127	0.131	0.131	0.130	0.126	0.137	0.096	0.12
δ/h	3.58	3.37	3.62	3.37	3.58	3.28	3.45	10.6	—

Roughness lengths shown in full-scale. The inflow profile for case U15RC2 was not measured due to an oversight, and as a result the U15RC2 PIV results were normalized against the U15RC1 inflow data.

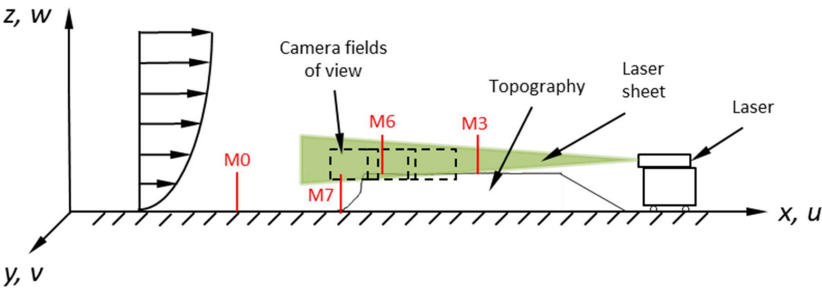


Figure 1. Schematic of WindEEE experimental setup.

Deleted: PIV

Deleted: ¶
Case ID

Deleted: ¶
*

Deleted: upstream

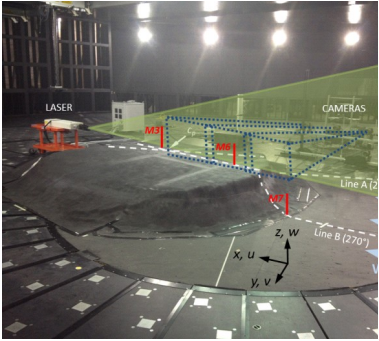
Deleted: had to be

Deleted: upstream

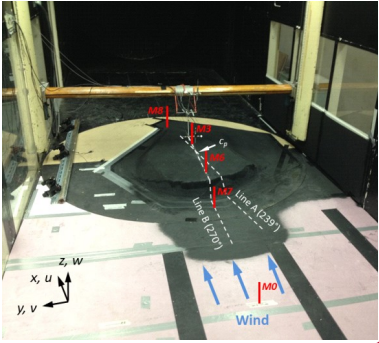
Deleted: Cobra Probe

Deleted: Table 2. Inflow parameters for BLWTL experiment¶

¶
Case ID



Deleted:



Deleted:

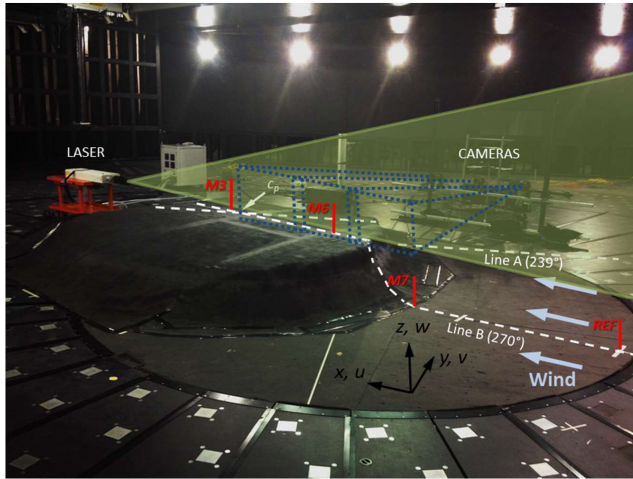


Figure 2. Photograph of the WindEEE experimental setup.

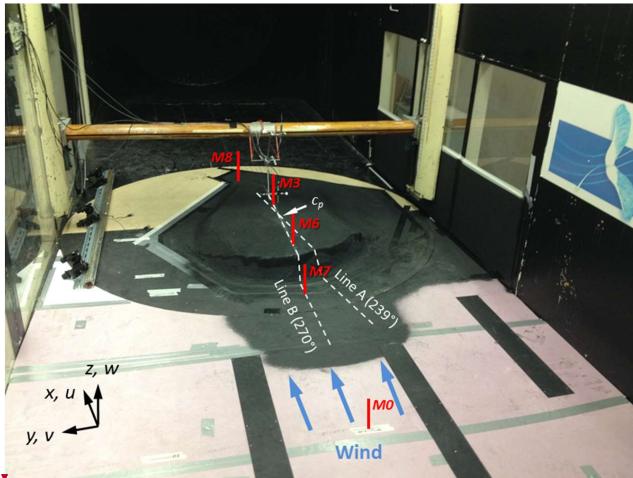


Figure 3. Photograph of the BLWTL experimental setup.

Formatted: Font: Not Bold
 Deleted: Experimental
 Deleted: for a) WindEEE b) BLWTL
 Deleted: ¶

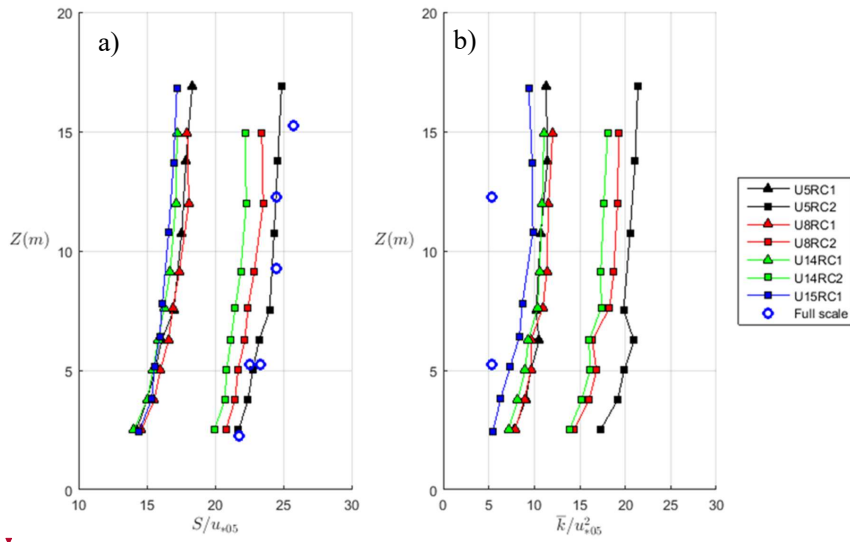


Figure 4. a) WindEEE inflow profiles of a) mean flow speed and b) TKE normalized by friction velocity obtained using Method 1. S and \bar{k} calculated using all three components of wind speed from Cobra Probe measurements. Z co-ordinates shown in full-scale units.

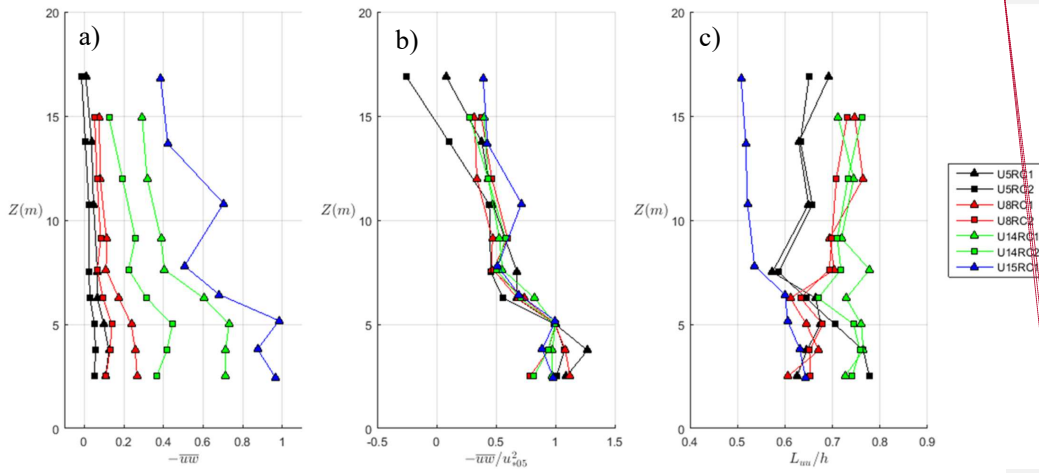


Figure 5. WindEEE inflow profiles: a) Reynolds shear stress magnitudes b) Reynolds shear stress normalized by friction velocity (Method 1), and c) integral length scales of the streamwise velocity component, normalized by hill height.

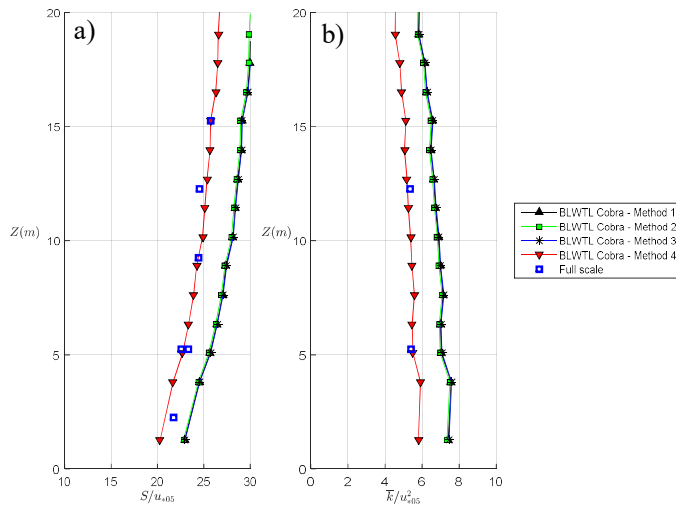
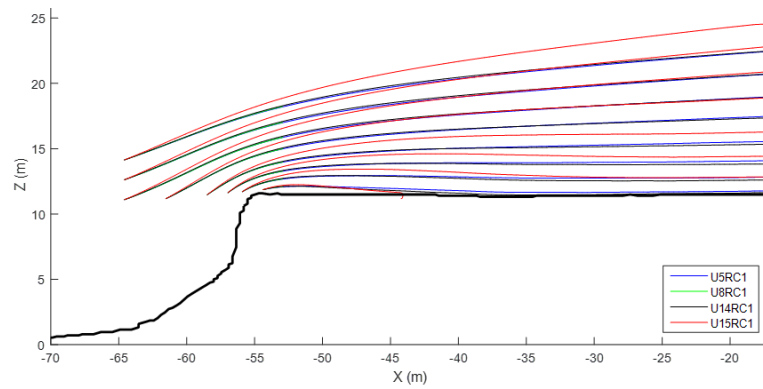


Figure 6. BLWTL inflow profiles of a) mean flow speed and b) TKE, normalized by friction velocity obtained using four different methods.



5 **Figure 7.** Streamlines of mean velocity for various cases with roughness configuration RC1.

Deleted: Mean streamline plots

Deleted: test

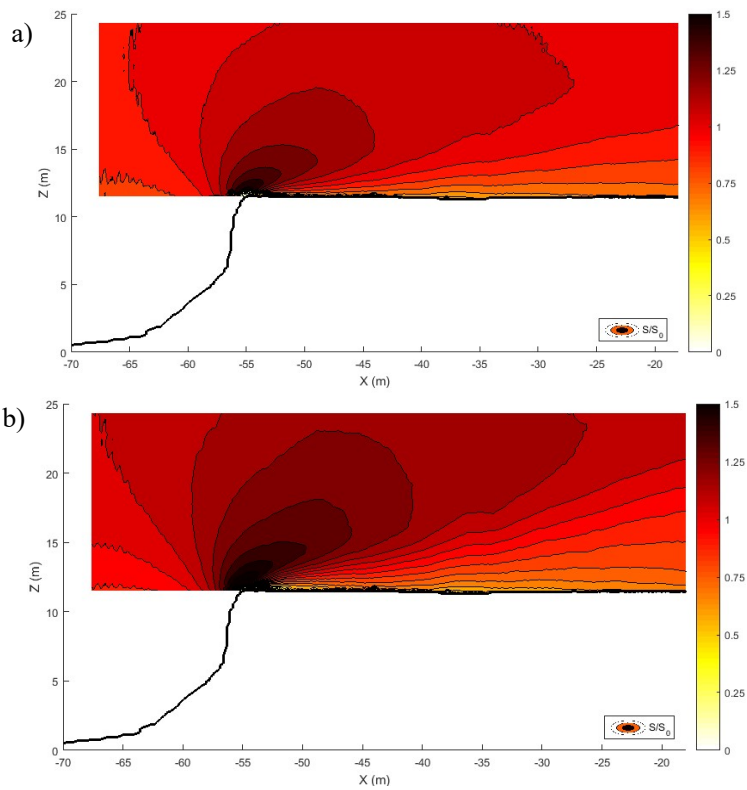


Figure 8. Contours of speed-up ratio (S/S_0) for a) U14RC1 and b) U15RC1.

Deleted: S

Deleted: contour plot

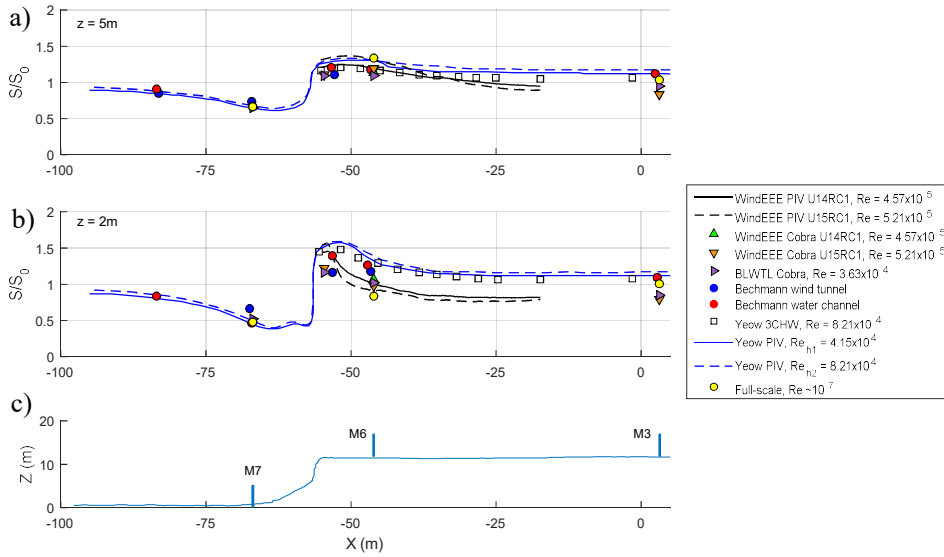


Figure 9. Horizontal profiles of speed-up ratio from PIV and Cobra Probe measurements (WindEEE and BLWTL cases) at a) $z = 5$ m and b) $z = 2$ m above hill surface. Results from full-scale and other previous physical experiments presented for comparison.

Deleted: WindEEE and BLWTL

Deleted: along horizontal profiles

Deleted: level for PIV and Cobra Probe measurements with comparison to full-scale and to previous physical experiments

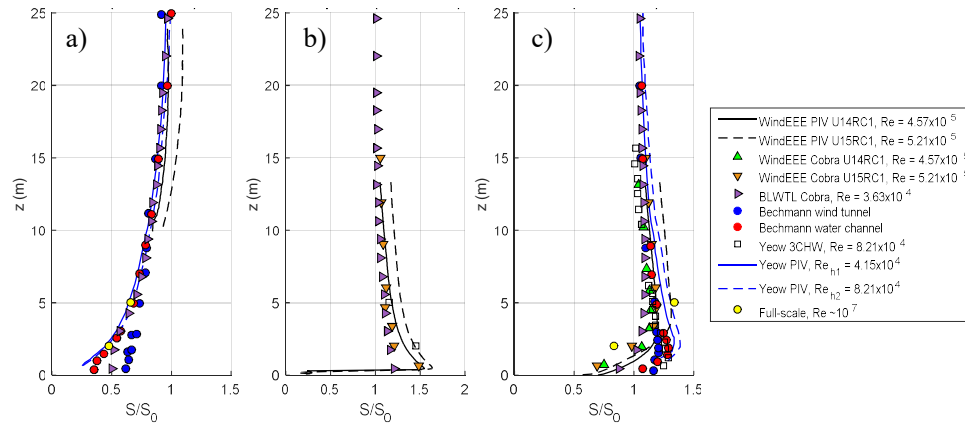


Figure 10. Vertical profiles of speed-up ratio for WindEEE and BLWTL cases at a) M7 ($X = -66.9$ m), b) escarpment ($X = -54.7$ m) and c) M6 ($X = -46.1$ m). Results from full-scale and other previous physical experiments presented for comparison.

Formatted: Font: Not Bold

Deleted: Comparison of WindEEE and BLWTL

Deleted: along vertical profiles

Deleted: with comparison to full-scale and to previous physical experiments

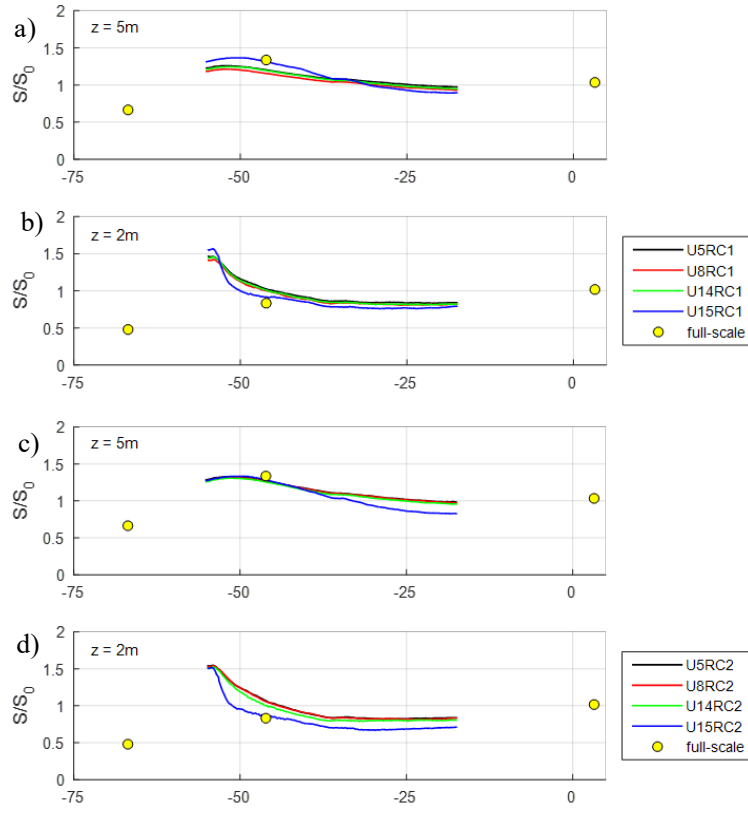


Figure 11. Horizontal profiles of speed-up ratio for a) RC1 cases, $z = 5$ m, b) RC1 cases, $z = 2$ m, c) RC2 cases, $z = 5$ m and d) RC2 cases, $z = 2$ m.

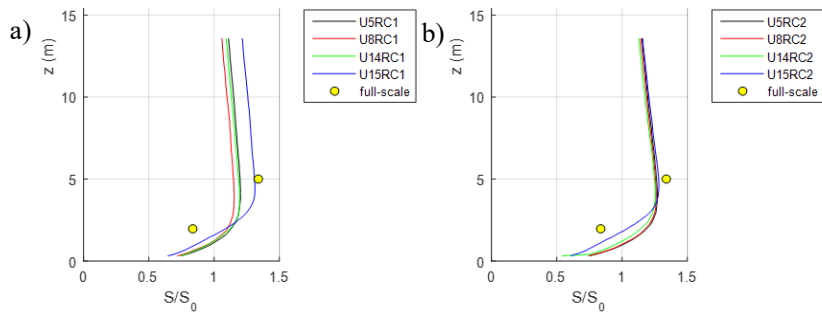


Figure 12. Vertical profiles of speed-up ratio at M6 for a) RC1 cases and b) RC2 cases.

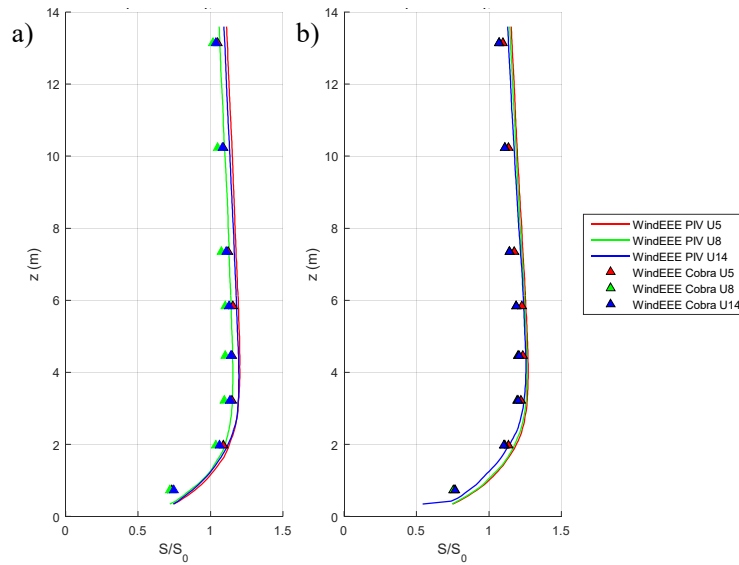


Figure 13. Vertical profiles of speed-up ratio from WindEEE PIV and Cobra Probe at M6, for a) RC1 and b) RC2.

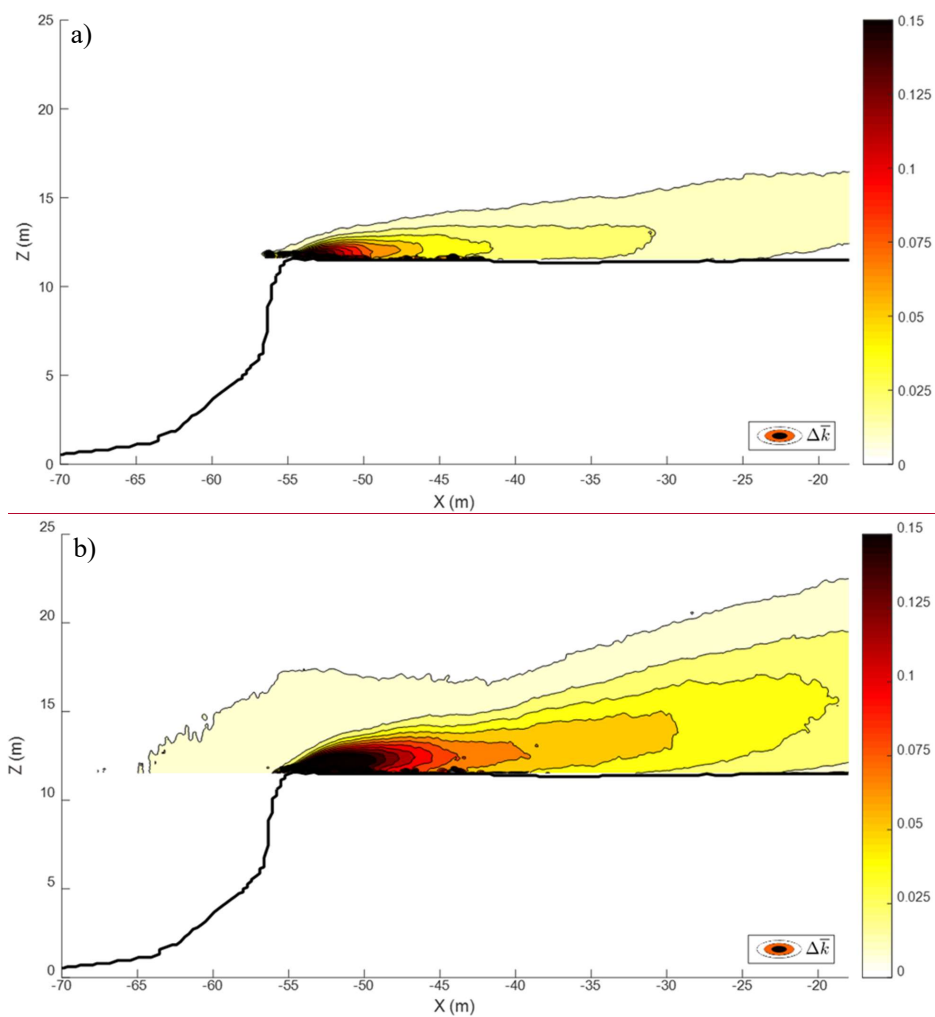


Figure 14. Contours of mean TKE increment $\Delta \bar{k}$ for a) U14RC1, and b) U15RC1.

Deleted: M

Deleted: contour plot

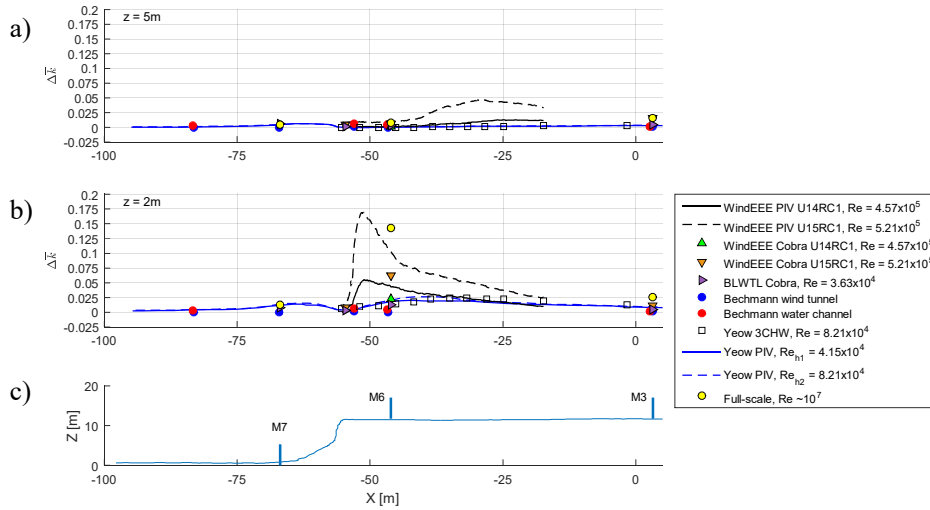


Figure 15. Horizontal profiles of TKE increment Δk from PIV and Cobra Probe measurements (WindEEE and BLWTL cases) at a) $z = 5$ m and b) $z = 2$ m above hill surface. Results from full-scale and other previous physical experiments shown for comparison.

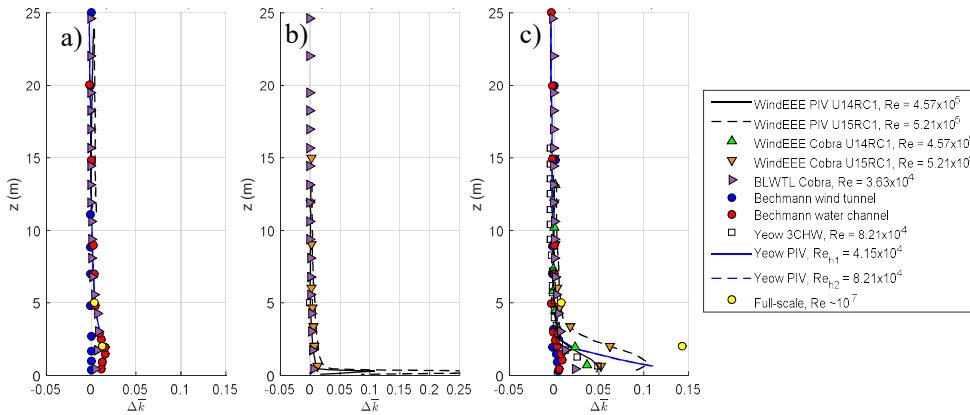


Figure 16. Vertical profiles of TKE increment Δk from PIV and Cobra Probe measurements (WindEEE and BLWTL cases) at a) M7 ($X = -66.9$ m), b) escarpment ($X = -54.7$ m) and c) M6 ($X = -46.1$ m). Results from full-scale and other previous physical experiments shown for comparison.

Deleted: TKE increment along horizontal profiles at

Deleted: level

Deleted: for PIV and Cobra Probe measurements with comparison

Deleted: to

Deleted: t

Deleted: o

Deleted: Comparison of

Deleted:

Deleted: TKE increment along vertical profiles

Deleted: with comparison to full-scale and to previous physical experiments.

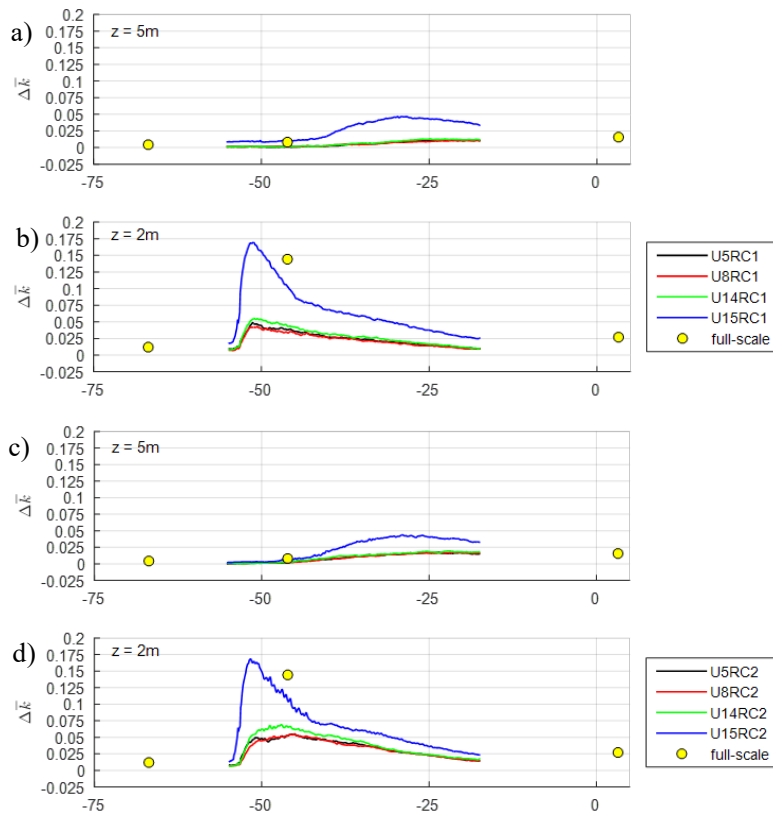


Figure 17. Horizontal profiles of TKE increment $\Delta \bar{k}$ for a) RC1 cases at $z = 5$ m, b) RC1 cases at $z = 2$ m, c) RC2 cases at $z = 5$ m, and d) RC2 cases at $z = 2$ m.

Deleted: Change in TKE h

Deleted: . and

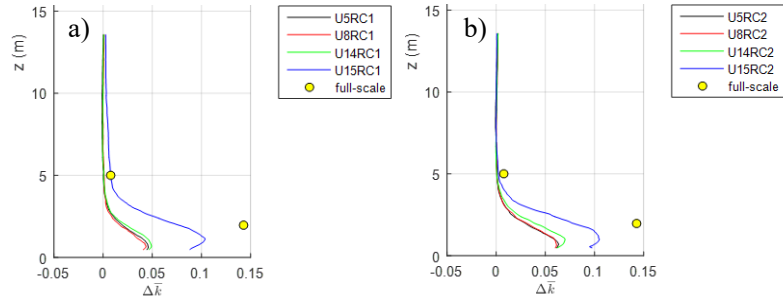


Figure 18. Vertical profiles of TKE increment $\Delta \bar{k}$ at M6 for a) RC1 cases and b) RC2 cases.

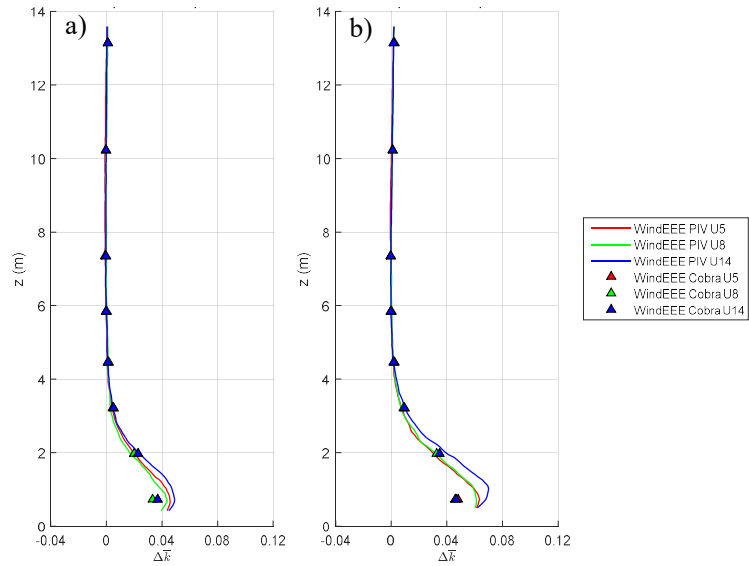


Figure 19. Vertical profiles of TKE increment $\Delta \bar{k}$ from WindEEE PIV and Cobra Probe at M6, for a) RC1 and b) RC2 cases.

Deleted: WindEEE PIV and Cobra Probe v

Friction velocity is still calculated using Eq. 6, however unlike in Method 1 where a single data point was used, Method 3 uses the mean of the values within the constant shear stress region, which were identified from the plots of height vs. $|u^*w^*|$ as the first three data points closest to the floor for each test run.

Case ID	Fan configuration	u_h (m/s)	Re	z_0 (m)	u_{*05} (m/s) Method 1	u_{*05} (m/s) Method 2	u_* (m/s) Method 3	u_* (m/s) Method 4
U5RC1	All fans 20%	5.42	1.70×10^5	1.84×10^{-3}	0.314	0.326	0.254	0.333
U5RC2	All fans 20%	5.49	1.72×10^5	1.96×10^{-6}	0.229	0.252	0.145	0.231
U8RC1	All fans 30%	8.70	2.72×10^5	1.98×10^{-3}	0.488	0.489	0.409	0.505
U8RC2	All fans 30%	8.57	2.68×10^5	4.12×10^{-7}	0.373	0.415	0.203	0.355
U14RC1	All fans 50%	14.60	4.57×10^5	2.72×10^{-3}	0.856	0.869	0.723	0.848
U14RC2	All fans 50%	14.69	4.60×10^5	2.29×10^{-6}	0.668	0.361	0.392	0.640
U15RC1	Fan rows 1,2,4: 50%	15.60	5.21×10^5	2.87×10^{-4}	0.992	1.070	0.650	0.970
	Fan row 3: 75%							
U15RC2	Fan rows 1,2,4: 50% Fan row 3: 75%	~15.60	~ 5.21×10^5	Not measured*				

Table 2. Inflow parameters for BLWTL experiment

b)

Case ID	u_h (m/s)	Re	z_0 (m)	u_{*05} (m/s) Method 1	u_{*05} (m/s) Method 2	u_* (m/s) Method 3	u_* (m/s) Method 4
BLWTL	4.65	3.63×10^4	1.266×10^{-4}	0.1643	0.1651	0.1640	0.1858