

Response to Referee #1 (Tor Anders Nygaard)

Discussion Paper wes-2017-29

Decoupled simulations of offshore wind turbines with reduced rotor loads and aerodynamic damping

Sebastian Schafhirt and Michael Muskulus

Dear Tor Anders Nygaard,

We thank you once more for your careful work and interest in our manuscript. We revised the manuscript based on your comments. Please find our point-by-point reply below.

With best regards,

Also on behalf of my co-author

Sebastian Schafhirt

- (1) The article compares computational effort for several models, but I suspect there are different levels of parallelization at play. If this is the case, please mention that more specifically. I would like to see apples-to-apples comparison of computational speed for the FEDEM model with the decoupled rotor model and pre-computed time-series of rotor forces, relative to the complete integrated FEDEM model. The effort for pre-computation of forces and optimization of the damping coefficients do not need to be included here. Does the relative difference change if this is run on a single processor?

The introduction (Chapter 1) includes an additional paragraph in order to address the topic of reduction in computational costs and our reasons to not compare it in the study (please see page 4, line 17-24).
- (2) New sequence for the paper: From complex to simple models.

We agree that changing the sequence of the paper is an option, but decided to stick with our choice. However, we adjusted the introduction to justify the current sequence of the model presented (cf. page 4, line 17-24).
- (3) The optimization problem is here defined to adjust the six damping coefficients to match the fully integrated model by minimizing eq. 9. In eq. 9, the variance residuals of the 6 tower top deflections have equal weight, although they have different influence on the von Mises stress on the different parts of the structure. As mentioned earlier in the article, this is OK if a perfect match is found for all DOFs, but this is not always possible. Also, two time series of deflections may be very different, but have the same variance. Please comment if other optimization criteria have been tested as well, such as fatigue life due to all loads, in in selected hot spots, or important stress components at selected hot spots.

That is a very good point and we looked indeed at different optimization criteria. We included a new paragraph in Chapter 3 (cf. page 8, line 15-20).
- (4) The comparisons of PSD plots of forces in the article is a very powerful tool for explaining the differences in the results, although the logarithmic scale mask some of the differences. The way the study is set up, also gives the opportunity to look at comparison examples in the time domain, since a perfect decoupled model and detailed rotor model in theory should give the same time history of loads. Please show examples of comparison. I would like to see 100s of each of the six load components at the tower root comparing 1) the integrated simulation, 2) the decoupled model with full rotor loads and six optimized dampers, and if possible, 3) the decoupled model with full rotor loads and no dampers, at 8 m/s, rated wind speed and 20 m/s.

We agree with the reviewer. The requested plot is included in the revised version of the manuscript.
- (5) In the EFL comparisons of figures 15 and 16, please include a comparison of “total” EFL, based on von Mises stress, on the upwind side of the tower at the tower root and just below the nacelle.

Only variance and EFLs are compared within the study, while other results might be possible to compare as well (e.g. rainflow-counting and von Mises stress). We decided to keep it consistent and do not introduce a new value to compare towards the end of the manuscript. Therefore, a total EFL based on von Mises stress is not included in Figure 15 and 16.
- (6) In the conclusions, it is stated that “the method to obtain the damping coefficients for all six viscous dampers used in this paper is computationally demanding and impractical for industrial applications. Hence, a more efficient method or formula to obtain optimal damping

coefficients for viscous dampers is desirable". I think one reason the optimization algorithm is demanding, is that we are trying to optimize one "convoluted" objective (eq. 9) by varying six coefficients simultaneously. Maybe the starting point for the optimization could be improved by tuning one and one or two and two coefficients by looking at outputs more directly linked to those coefficients. For example, select the damping coefficient for x motion, C_x to match variance of M_y at the tower bottom, C_y to match the variance of M_x at the tower bottom, set C_z equal to C_y (should be the same, except for the influence of shear and rotor tilt), and C_{rz} to match the variance of torsion shear stress at the tower top. If approaches like this are already used, or tested and discarded, please comment on this.

The approach described by the reviewer has in fact been used in the course of this study. We added a paragraph in Chapter 3 (cf. page 9, line 4-7)

- (7) How different are C_x found in DC 1 through DC 4?

A plot showing damping ratios for all four models over the wind speed is included in the revised manuscript (cf. Figure 19).

- (8) On page 15, line 8, the full and decoupled models are the same as above, except that only one damper is applied in the x direction at the tower top for the decoupled model. This coefficient is tuned to match 1) tower top variance of displacement, 2) the variance of the overturning moment, and 3) the equivalent fatigue load for the overturning moment (M_y) at tower bottom. In figure 10, the damping coefficient optimized for matching EFL is very different from the damping coefficient optimized for matching tower bottom bending moment variance. Please examine why the results differ so much, because this would help us understand more of the challenges using simplified criteria such as tower top deflections.

Figure 10 shows the damping ratios for the decoupled model (DC III) with full rotor loads applied and one damper in wind-direction on tower top. The damping coefficient is optimized for three different objective functions. The damping ratios obtained to match variances (tower top and tower bottom) show smaller damping ratios for the wind speeds 12 m/s 14m/s and 16m/s. A similar trend can be observed for DC II (Figure 5), while the damping ratios obtained for DC I (Figure 2) show a more or less similar behavior for all three objective functions. The differences between the decoupled models (DC I – DC III) are the loads applied on tower top. It seems that adding an overturning moment at tower top to an already applied thrust force affects variance and EFL at tower bottom differently. There is not an obvious reason that explains these differences. However, it has to be taken into account that controller activities significantly influence the response for the above mentioned wind speeds and that EFLs are non-linear. In fact only a few cycles with lower amplitude can significantly decrease the EFL. Comparing the cycle-counting between a model optimized to match variance at tower bottom and a model optimized to match EFL at tower bottom shows a higher damaged for the variance-optimized model. The higher damaged is caused by only a few cycles with a slightly smaller amplitude (mainly in the lower third of the maximum cycle range). We agree with the reviewer that it is of importance to understand how simplified criteria can be used in the load analysis. We guess that it will become a broader topic and that it might be too much to investigate it in this study.

- (9) One point is that even if two models have the same variance of tower bottom bending moments, the EFL may be different due to the strong nonlinearity from loads to EFL (eq. 8). Then it is surprising that we seem to get identical results in the figures 11 and 12, for the three optimization methods, since the decoupled rotor model has been run with very

different damping. Please double-check that the figures 11 and 12 are correct and comment on this. In the beginning of the article it is stated that the aerodynamic damping is very important for fatigue, but many of the comparisons show very small differences for significant differences of damping levels.

Very good observation. We checked the figure mentioned by the reviewer again and they are plotted correctly. Differences between the three optimized models exist, but these are small for the two wind speeds shown and are hardly to distinguish considering the scale of the vertical axis. Hence, we changed the scale of Figure 11 and 12.

- (10) On page 17, line 3, it is stated that “The results of the decoupled model (DC 3) are not conservative anymore. In fact, the ratio for displacements for bending moments around the y-axis are up to four times higher for a wind speed of 12 m/s (not shown) and still almost three times higher for a wind speed of 20 m/s.” I think it should be bending moments around the z-axis. [Correct] Please clarify the use of “conservative” or simply state whether the loads for model DC3 are higher or lower than the integrated model. When I hear that a model is “conservative”, I assume it has higher loads than the reference.

Many thanks for the comment. We corrected the typo and rephrased the paragraph (cf. page 1, line 16-18).

- (11) On the same page, it is stated that “It seems that especially the torsion (rotational movement around the vertical axis) of the OWT has to be damped.” I think this is a very important comment. In my opinion, the next logical step is a model DC3b with dampers in tower top x translation, and tower top z rotation. It is even possible that the optimization could be carried out first as in DC3 (tuning only coefficient C_x), and then, keeping C_x constant, tune C_{rz} . Even if the two coefficients after being initialized separately have to be fine-tuned simultaneously, should this give a significant speedup compared to model DC4. Would model DC3b then perform almost as good as model DC4? What would be the increase in computational cost over model DC3 (due to optimizing two damping coefficients vs. one)? How sensitive is the life-time fatigue at the tower root and tower top due to the torsion shear stress? Please do this, or comment if this has been tested and discarded already.

We appreciate the reviewer’s thoughts. As mentioned above (point 6) not all of the decoupled models and optimization criteria investigated in this study are presented in the paper. We reduced the number of models to keep the manuscript interesting for the reader without reducing the main conclusion of the study. Our motivation is to assess the accuracy of decoupled models used in studies and preliminary design phases, show that aerodynamic damping is non-linear and that it increases with higher wind speeds. The proposed model DC 3b has not been used in studies before and will not perform as well as DC IV. The latter one can be said since the genetic algorithm would find a solution with damping coefficients set to zero that is performing better than the current solution for DC IV.

It is correct that finding the damping coefficients for C_x and C_{rz} is significant faster than optimizing damping coefficients in six degree of freedom using a genetic algorithm. The results are comparable to the model DC III with the exception that the displacement and moments around the vertical axis matches the results from an integrated analysis.

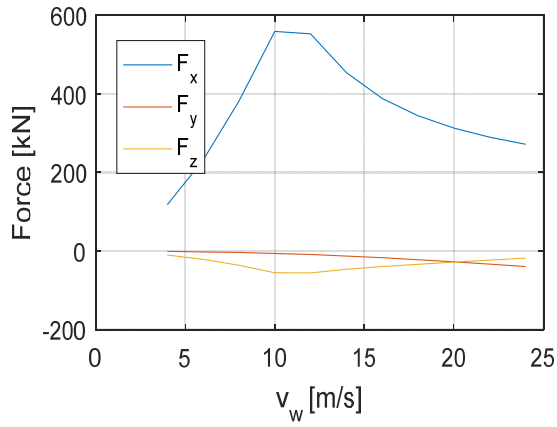
- (12) Chapter 5 – Decoupled models with reduced rotor loads: I think this section should examine or give more details of the cited articles on the importance of the different force and moment components on the life time fatigue at the hot spots in the tower root and top. This can be achieved in several ways, e.g.:

1. Re-run the integrated model through the fatigue load cases, and remove one force/moment component from the rotor at the time (except rotor thrust), or
2. Remove one stress component at the time at selected hot spots at the tower root and tower top.
3. Supplement the figures 3, 4, 6, 7, 11, 12 , 15 and 16 with “total” EFL based on all stress components, at the upwind side of the tower (since all load cases here have wind and waves aligned).

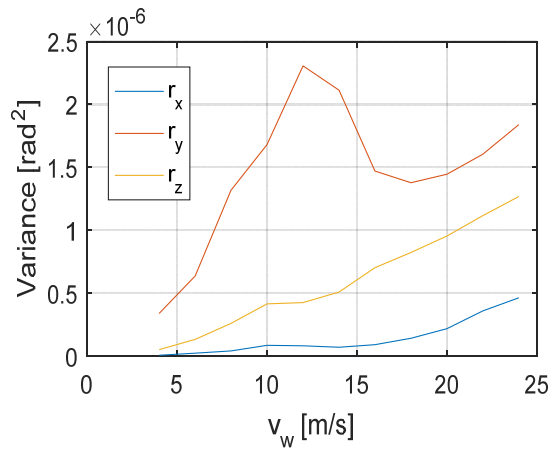
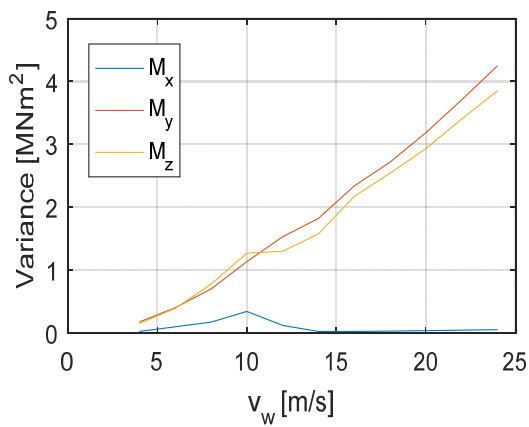
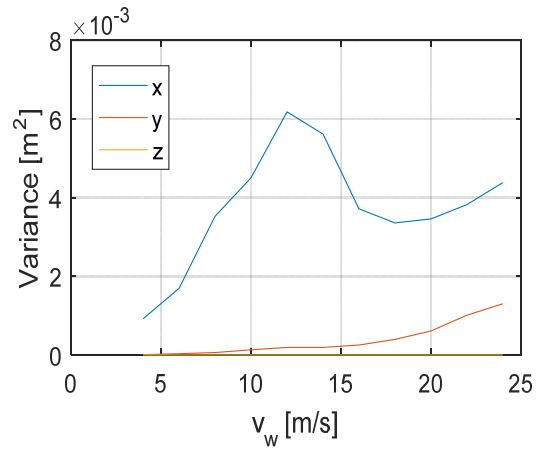
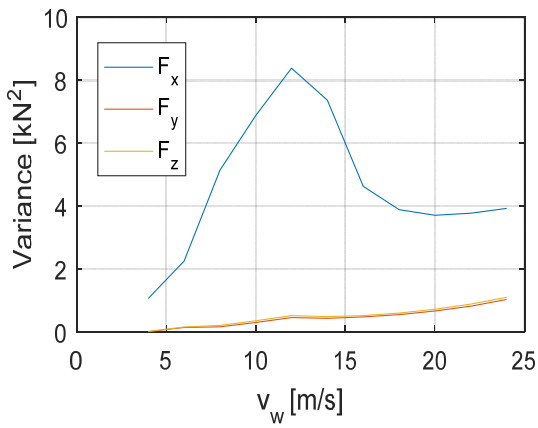
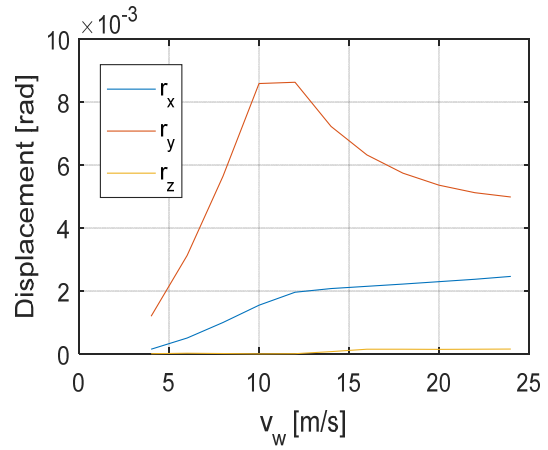
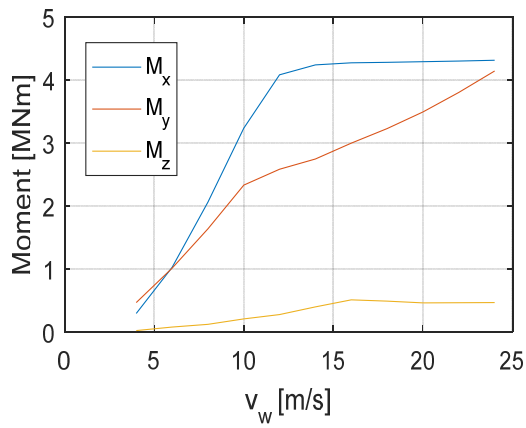
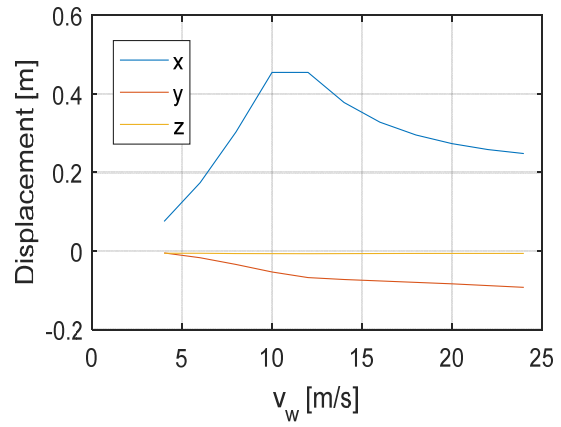
The reviewer brings up an interesting topic that is not been covered in the manuscript yet. Performing the proposed steps will give a better picture on which rotor loads have to be applied to obtain accurate results with decoupled models. The authors examined the rotor loads at the beginning of the study. Mean and variance of rotor loads (forces and moments at turbine bottom from a standalone rotor simulation) and the tower top displacements of an integrated simulation were plotted against the wind speeds (see figure below). Even if there is not a direct dependence between variance and EFLs, it can be concluded that with higher variance, EFL will increase as well. On the other hand, increasing only the mean of a rotor load will lead to the same EFL. Looking at the plots will thereby giving a first brief idea which rotor loads matter for the load analysis. Force or moment time series with little variance, even if their mean is increasing for higher wind speeds, will only marginal impact the EFL.

As mentioned earlier in this rebuttal, our motivation is to present a simple investigation first and continue with more complex models and evaluation methods, if it is of interest. The reviewer suggests a quite comprehensive study and we assume that it rather content for further studies/work.

Rotorloads



Tower top displacements



- (13) Model DC 1 applies only rotor thrust to the tower top. This model is attractive for users without access to a detailed rotor model, since overall CT curves are often available, and the time series can be pre-computed from eq. 1. Model DC2, including tower top overturning moment, requires a detailed rotor model. This step up in complexity relative to model DC1 is maybe a bit understated. Once we have the six force/moment components available from a detailed rotor model, the extra effort over model DC 2 is to optimize the additional damping coefficients, for each wind speed bin.

Very good point. We appreciate the comment and emphasized it in the revised version of the manuscript (cf. page 23, line 26-28).

- (14) Comment Page 8: heavy sentence!

So, the objective function is matching tower top variance of deflection, or EFL, and a one-dimensional search was used to find the damping coefficient.

But the way you have set up this optimization, a perfect match would give identical time series of loads, right? On the other hand, two very different time series can have the same variance. Are there other objective functions that could explore the consistency of this optimization setup even better?

Please mention if other objective functions have been tested, and why this one was chosen.

The perfect match as it is used in this study refers to matching the variance (or EFL) of displacements, forces or moments of an integrated analysis exactly. It does not mean that the time series itself will match exactly. This is generally not possible as long as only a thrust force or overturning moment is applied at tower top. We agree that time series can be very different even if the variances matches. However, examining the cycle-counting and the PSD ensure that the response time series are similar. The revised manuscript will also include a plot of the response in time-domain, as suggested by the reviewer. The authors tested and used other objective functions, as mentioned in point 6. We tried to match the cycle-distribution of the rainflow-counting algorithm by using the principles of distance optimization. Furthermore, we aimed to optimize the RMS of the displacement time series, which was not successful due to a non-zero shift in the mean of the response time series and small differences in frequency and phase. Since these approaches did not work out, we limited our objective function to an easy expression: the variance and EFL calculation for distinct output locations. We used in total ten output locations and presented three of them (1) variance of tower top displacements, (2) variance of tower bottom loads, and (3) EFL of tower bottom loads.

The corresponding paragraph has been revised accordingly (cf. Chapter 3).

- (15) Remaining comments/sticky notes in the actual script:

We read the comments and addressed them accordingly in the revised manuscript. We did not move the definition of critical damping in the introduction chapter, but pointed out that the damping ratios mentioned are provided in terms of the system's critical damping. The formula to calculate critical damping follows in Chapter 2.

The meaning of the highlighted sentence in the abstract is not clear to the authors. We assume that it is mistakenly highlighted.

Response to Referee #2 (anonymous)

Discussion Paper wes-2017-29

Decoupled simulations of offshore wind turbines with reduced rotor loads and aerodynamic damping

Sebastian Schafhirt and Michael Muskulus

Dear reviewer,

We thank you once again for your careful work and dedicated effort. Your comments are much appreciated. We revised our manuscript based on your comments. Details on how we addressed your comments can be found below.

With best regards,

Also on behalf of my co-author

Sebastian Schafhirt

- (1) For offshore wind turbines on monopile support structures, the soil-structure interaction can significantly affect the performance of the system. Please clarify if the soil-structure interaction is considered in this study.
[Correct. It is clarified now. \(see 1st paragraph Chapter 4\)](#)
- (2) The choice of two wind speeds (i.e. 8m/s and 20m/s) in the case studies should be justified.
[We agree and added a brief explanation in the corresponding paragraph \(page 11 line 10-12\)](#)
- (3) It would be appropriate to add a case study to validate the calculated damping ratio.
[A validation is certainly a good point, but a little bit out of the scope for this work. We included a comment in the discussion chapter \(please see page 22 line 17 to 19\)](#)

List of relevant changes

Discussion Paper wes-2017-29

Decoupled simulations of offshore wind turbines with reduced rotor loads and aerodynamic damping

Sebastian Schafhirt and Michael Muskulus

All relevant changes made to the manuscript are highlighted. Additional figures are added (17, 18, and 19).

Decoupled simulations of offshore wind turbines with reduced rotor loads and aerodynamic damping

Sebastian Schafhirt, Michael Muskulus

5 Department of Civil and Environmental Engineering, Norwegian University of Science and Technology, Trondheim, 7491, Norway

Correspondence to: Sebastian Schafhirt (sebastian.schafhirt@ntnu.no)

Abstract. Decoupled load simulations are a computationally efficient method to perform a dynamic analysis of an offshore wind turbine. Modelling the dynamic interactions between rotor and support structure, especially the damping caused by the rotating rotor, is of importance, since it influences the structural response significantly and has a major impact on estimating fatigue lifetime. Linear damping is usually used for this purpose, but experimentally and analytically derived formulas to calculate an aerodynamic damping ratio often show discrepancies to measurement and simulation data. In this study decoupled simulation methods with reduced and full rotor loads are compared to an integrated simulation. The accuracy of decoupled methods is evaluated and an optimization is performed to obtain aerodynamic damping ratios for different wind speeds that provide the best results with respect to variance and equivalent fatigue loads at distinct output locations. Results show that aerodynamic damping is not linear, but that it is possible to match desired output using decoupled models. Moreover, damping ratios obtained from the empirical study suggest that aerodynamic damping increases for higher wind speeds.

1 Introduction

The simulation of an offshore wind turbine (OWT) in time-domain under combined aerodynamic and hydrodynamic loading is currently considered as the most accurate method to analyse the support structure dynamics and forms the basis for interpretation of the characteristic combine load effect (DNVGL-ST, 2016). However, it is still computationally demanding and requires special simulation software. Conceptual or parameter studies during the design process (Arany et al., 2017) or for research purpose (Cheng et al., 2012) usually necessitate to perform numerous simulations, thereby leading to a time consuming task. These simulations are, therefore, often carried out with different analysis methods, such as frequency-domain calculations (van der Tempel and de Vries, 2005; Ziegler et al., 2015) or substructuring techniques (van der Valk and Rixen, 2012) and/or simplified/reduced models (Muskulus and Schafhirt, 2015). For most of the reduced models the aerodynamic loading is simplified by removing the rotor-nacelle-assembly from the support structure and replacing the aero-elastic computation with precomputed or stochastic generated rotor loads acting as a point force or moment at tower top (Dong et al., 2011; Abhinav and Saha, 2015; Kim and Lee, 2015; van der Male and Lourens, 2015; Schløer, et al., 2016; Ong

et al., 2017) The main advantages are the faster simulation time, since the aero-elastic computation rather is a time-consuming task, and the possibility to use standard finite-element or multi-body software (Muskulus and Schafhirt, 2014). It has been shown that the use of rotor load time series combined with an efficient substructuring technique (van der Valk and Rixen, 2012) can speed up the dynamic analysis for a commercial support structure design by a factor of 375. Harnessing the power of Graphics Processing Units and performing the computation in parallel results in an additional twelve times faster execution time thereby accelerating the dynamic analysis by a factor of 4722 compared to a time-domain simulation including aero-elastic calculations (Schafhirt et al., 2015).

Additional reasons to simplify the aerodynamic loading on a support structure are for example when solely the response of the support structure is of interest or turbine data are not available. The latter is usually the case when the support structure designer and wind turbine supplier do not share detailed data during the design process.

The main drawback of using a model with simplified aerodynamic loading is the missing modelling of interactions between the rotor and the support structure. The most important interaction is the so-called aerodynamic damping, which refers to the effect that the vibration of the support structure is damped by the rotor (van der Tempel, 2000; Kühn, 2001). Especially in operational cases, when the rotor is rotating, aerodynamic damping significantly contributes to the total damping. Damping has a major impact on the fatigue of an OWT and since fatigue is usually a design driving criterion in dimensioning the support structure, a proper representation of aerodynamic damping is crucial for the dynamic analysis of support structures for OWTs (Muskulus and Schafhirt, 2014).

The most common practice to include aerodynamic damping in simplified models or analyses methods (e.g. frequency-domain calculations) is the application of a discrete dashpot at tower top for time-domain simulations (Schløer, et al., 2016; Ong et al., 2017) or to add an additional aerodynamic damping value to the damping in the transfer function for frequency-domain calculations (Salzmann and van der Tempel, 2005). Damping values for the transfer function or a damping coefficient for a discrete dashpot are derived in different ways. Often these values are empirically obtained from simulation or measurement data, theoretically from analytical derived formulas or a constant value is assumed for all wind speeds.

Garrad (1990) derived a formulation for aerodynamic damping of constant speed wind turbines, which was later extended by Kühn (2001), who also proposed numerical linearization and non-linear time-domain simulations to derive aerodynamic damping values. The latter method calculates the aerodynamic damping ratio from a free vibration response of the tower top after an impulse is applied. Garrad's derivation, Kühn's closed-form model and an additional method proposed by van der Tempel (2000) were compared and showed good agreement for operational wind speeds (Salzmann and van der Tempel, 2005). However, these methods are applicable only on constant speed turbines.

Salzmann and van der Tempel extended the methods and derived a formulation for variable speed wind turbines. Van der Tempel's method requires time-domain simulations since the damping ratio is computed by considering changes in thrust due to variations in wind speed. Alternatively, they presented a second method based on an analytical formula. It has been shown that these two approaches for variable speed wind turbines do only match for below rated wind speed and show different behaviour above rated wind speed. Furthermore, both methods do not match damping ratios that were empirically

determined from frequency-domain calculations. This was done by increasing the aerodynamic damping until the mudline bending stress response spectra of the frequency-domain calculations matched the response spectra of a 7-hour time-domain simulation (Salzmann and van der Tempel, 2005).

Hansen et al. (2006) used a similar approach as proposed by Kühn (2001). They estimated modal damping for the first fore-aft and side-side mode of a 2.7 MW turbine under operating conditions from the transient decay of the turbine after exciting it with its natural frequency. The results are compared with another experimental method, an operational modal analysis based on stochastic subspace identification (SSI). The SSI method estimates the modal damping and only requires time-series of the dynamic response of the operating wind turbine due to ambient excitation from air turbulence and control forces.

10 Although Hansen et al. did not directly estimate an aerodynamic damping ratio, it is straightforward to compute the contribution from aerodynamic damping, when other damping sources are known and subtracted from the estimated modal damping. A method that evaluates the aerodynamic damping directly was recently proposed by Chen et al. (2017) and is a wavelet-based linearization method. It also only requires long time series of the wind turbine under operating conditions. Hansen et al. concludes that the SSI method provides better results than the exciter method to extract modal damping. Using
15 the SSI method showed a constant decrease for the modal damping for the first side-side tower mode for increasing wind speed, while the modal damping for the first fore-aft tower mode is scattered about a mean of almost 13 % of critical damping with a standard deviation of 1.3 %. The SSI method was also used by Kramers et al. (2016) to obtain modal damping for fore-aft and side-side modes of a 3.6 MW OWT under idling conditions. Damping ratios in terms of critical damping for these modes under idling conditions were only around 3.0 %, since aerodynamic damping contributes only little
20 to the overall damping. Damping ratios in the same range were obtained from the measurement campaign performed at the Belwind offshore wind farm, which consists of 55 monopile-based 3.0 MW wind turbines. For turbines in parked conditions and subject to higher wind speeds (10 – 15 m/s), damping ratios with a median of around 2.0 % and 3.0 % of critical damping were found for the first fore-aft and first side-side mode, respectively. The next three modes dominant for the response of the OWT (second fore-aft, second side-side with nacelle component, and second fore-aft with nacelle
25 component) had a significantly smaller damping ratio with a median smaller than 2.0 % of critical damping (Devriendt et al., 2014). Data from the same measurement campaign, but for wind turbines during power production were published by Weijtjens et al. (2014). Damping ratios of the first fore-aft as well as the first side-side mode showed a continuous increase when plotted against the wind speed. The median of the damping ratio in terms of critical damping for both modes starts at a value of 2.0 % for the smallest wind speed (1.6 m/s) and goes up to almost 8.0 % and 3.0 % for the first fore-aft and side-
30 side mode, respectively. The measured data were later compared with results from a time-domain simulation (Shirzadeh et al., 2014). Simulation and measurements did not match very well and the authors concluded that this is likely caused by not accurately accounting for hydrodynamic forces.

A comparison between measurement and simulation data using the same analysis tool as Shirzadeh et al. (2014) for the time-domain simulation was also conducted for an onshore wind turbine (Ozbek and Rixen, 2013). For this study, test campaigns

were performed for operational and parked conditions on a 2.5 MW wind turbine and the dynamic response of the structure was monitored by using conventional strain gauges, photogrammetry, and laser interferometry. An operational modal analysis algorithm was used to obtain damping ratios for tower modes. The results for the first fore-aft and side-side mode were in the same range as the damping ratios obtained from simulations of the wind turbine in time-domain. The authors also
5 compare their results with Hansen et al. (2006) and neither the trend nor the range matches for damping ratios of tower modes.

To summarize, the methods to derive aerodynamic damping values are abundant as researchers working on this topic. Values derived by empirical methods and analytical formulations matches in most of the cases for wind speeds below its rated value, but show somewhat different behaviour for above rated wind speeds. Even for studies performed for wind turbines of similar
10 size the damping values for higher wind speeds varies widely. Although these differences were already shown in early publications, none of the studies aimed to evaluate the accuracy of using a linear damper to represent aerodynamic damping. This paper does, therefore, not introduce a new method to derive an aerodynamic damping ratio, but presents an empirical study that determines the optimal damping coefficient for linear damping at tower top representing the dynamic interactions between rotor and support structure. This gives rise to the main question sought answered in this work, i.e. how accurate
15 does a linear damper account for dynamic interactions between rotor and support structure? In order to investigate this, different rotor load models and combinations of linear dampers are investigated and compared to the response of a support structure from dynamic analyses under combined aerodynamic and hydrodynamic loading. The study starts with the simplest models that are used in studies and for conceptual designs. Damping ratios for operational wind speeds and results for different output locations are shown. The study ends with the most complex model that is possible to set up with solely linear
20 dampers. Results show that reduced rotor load models do not capture the dynamics of the structure accurately enough and that analytically derived formulas underestimate the damping ratio for aerodynamic damping above rated wind speed. The study is performed to investigate the use of linear dampers in the structural analysis of OWTs. Results and conclusions about reduction in computational costs are not included, since it highly depends on the hardware and software used to run the structural analysis.

25 **2 Integrated and decoupled dynamic analysis**

The nomenclature on integrated, coupled, decoupled and other methods for load simulations and analysis of OWTs is not unified. In fact, the term “integrated analysis” has been used with widely varying meaning (c.f. Seidel et al., 2005; Kaufer et al., 2009). In this study, integrated analysis refers to an aero-hydro-servo-elastic load simulation of the entire OWT (support structure and rotor are modelled numerically) that is performed in a single time-domain simulation. The OWT is subject to
30 combined wind and wave excitation and neither the model of the support structure nor the rotor are simplified or reduced (Fig. 1).

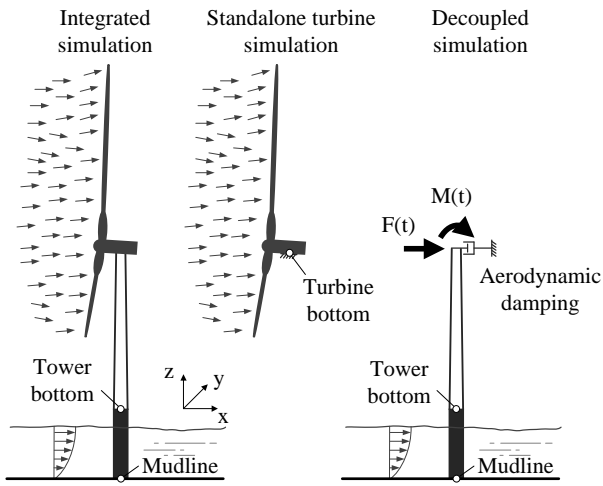


Figure 1: Offshore wind turbine and simulation methods

It is not mandatory to perform the integrated analysis with one software package; indeed a combination of two simulation tools, an aerodynamic solver coupled with general structural analysis software, as described in Kaufer et al. (2009), can be considered as an integrated analysis under the definition given in this paper. In literature this analysis method is often called a coupled or fully-coupled analysis. Since OWTs are subject to nonlinear and time-history dependent effects coming from wind and wave excitation, the integrated or coupled analysis is currently considered as the most accurate method for the dynamic analysis of OWTs. However, an integrated analysis is usually computationally demanding and requires detailed data of the support structure and turbine.

A computationally more efficient analysis method is the decoupled analysis. Here, the rotor in the numerical model is replaced by force and moment time series, referred to as rotor loads, acting on tower top (Fig. 1). Rotor loads are typically precomputed or generated by means of simplified rotor load models, such as classical models based on thrust coefficients, spectral or stochastic models (Muskulus, 2015a). Precomputed rotor loads are usually obtained from an aero-elastic simulation of a standalone turbine fixed at turbine bottom or from a wind turbine with non-moving, rigid support structure (Fig. 1). It is important to use a rigidly clamped rotor, since load time series from a simulation with moving support structure will lead to resonance problems (Muskulus, 2015b). Rotor load time series are then extracted from turbine bottom and applied at the top of the tower to perform a dynamic analysis of the support structure using standard finite-element or multi-body software. The rotor-nacelle-assembly in a decoupled analysis is usually simplified. Often an equivalent rotor-nacelle-assembly is modelled as a lumped mass on top of the tower with a mass moment of inertia (Ong et al., 2017; van der Male and Lourens, 2015; Schløer et al., 2016). In this case, rotor loads must not include forces or moments from gravitational and inertial loads.

Rotor load time series used with decoupled models are often reduced to a point force and bending moment acting on tower top, in order to further simplify and accelerate the dynamic analysis of the support structure. The point force is applied in the direction of the wind and perpendicular to the rotor (here x-axis) and represents the thrust force acting on the support

structure. The overturning moment is commonly applied around the axis in side-side direction of the turbine (i.e. parallel to the rotor plane and perpendicular to the direction of the wind; y-axis in Fig. 1). These loads are considered having the main impact on the dynamic response of the wind turbine and simplified rotor load models often do not provide a model for forces and moments acting in the remaining directions. A decoupled analysis that is not using force and moment time series in all six degree of freedom (full rotor loads) is referred to as a reduced rotor load model in this paper.

As already emphasized in the previous section, decoupling the rotor loads from the dynamic analysis of the support structure neglects important dynamic interactions between rotor and support structure. In an integrated simulation, the tower top motion reduces aerodynamic loads when it moves in the direction of the wind and increases the loads on the support structure vice versa. This motion mainly affects the thrust force. Using the assumption of an ideal rotor it is possible to derive a simple one-dimensional model for estimating the thrust force, F_T , at tower top (Hansen, 2008)

$$F_T = \frac{1}{2} C_T \rho_a A_R U^2 \quad (1)$$

where C_T is the thrust coefficient depending on the current state of the rotor, ρ_a the air density, A_R the rotor disc area, and U the wind speed. The latter can be divided in two components, when a turbulent wind field is considered

$$U = \bar{U} + u \quad (2)$$

where \bar{U} is the mean and u the turbulent wind speed. The model can easily be extended to account for tower top motions in wind direction by subtracting the velocity of the tower top in wind direction, \dot{x} , from the wind speed, U , thereby calculating a relative velocity for the rotor.

$$U_{\text{rel}} = \bar{U} + u - \dot{x} \quad (3)$$

Using the relative velocity and the model from Eq. 1, the thrust force can be separated into a static mean thrust force, $F_{T_{\text{mean}}}$, a dynamic turbulent thrust force, $F_{T_{\text{turb}}}$, and a dynamic damping force, F_{damping} .

$$F_T = \frac{1}{2} C_T \rho_a A_R \bar{U}^2 + \frac{1}{2} C_T \rho_a A_R (u^2 + 2\bar{U}u) + \frac{1}{2} C_T \rho_a A_R (\dot{x}^2 - 2u\dot{x} - 2\bar{U}\dot{x}) = F_{T_{\text{mean}}} + F_{T_{\text{turb}}} + F_{\text{damping}} \quad (4)$$

Rotor load models already account for the contribution of all three components, but precomputed rotor loads from a standalone turbine simulation only include the mean and the turbulent thrust force. The damping force has to be applied in addition, when precomputed rotor loads are used in a decoupled analysis. Tower top velocities, \dot{x} , and turbulent wind speed, u , are small compared to the mean wind speed, \bar{U} . Hence, the first (\dot{x}^2) and second term ($2u\dot{x}$) of the damping force is neglected and the estimation of the damping force reduces to

$$F_{\text{damping}} = -C_T \rho_a A_R \bar{U} \dot{x} = -c_{AD} \dot{x} \quad (5)$$

where c_{AD} describes the damping coefficient of a viscous damper representing the aerodynamic damping force. Assuming a thrust coefficient constant for distinct mean wind speeds, the coefficient, c_{AD} , is a function only of \bar{U} .

Aerodynamic damping is often expressed in terms of damping ratios. The damping ratio is defined as the ratio of the damping coefficient to the system's critical damping, c_c , and is calculated as follows

$$\zeta_{AD} = \frac{c_{AD}}{c_c} \quad (6)$$

5 with

$$c_c = 2m\omega \quad (7)$$

where m is the effective mass at tower top and ω the damped frequency.

3 Method

In this study the damping coefficients for the viscous damper applied on tower top are not calculated analytically, but obtained by matching the response from a decoupled with an integrated simulation. According to guidance in current standards (DNVGL-ST, 2016), the aerodynamic damping of the turbine will come out right performing an integrated simulation for the dynamic analysis of the OWT. In order to enable a fair comparison the OWT in the integrated as well as the decoupled simulation was subject to identical environmental conditions. This requires that the precomputed rotor loads that were applied at tower top of the decoupled model, were generated using the same turbulent wind input file as for the integrated simulation of the OWT. Furthermore, the wave spectrum and the random seed used for generating the wave elevation time series for the decoupled model were identical to the one for the integrated model. Integrated as well as decoupled simulations were performed for operational load cases based on DLC 1.2 (DNVGL-RP, 2016). The load combinations that are part of DLC 1.2 are the main contribution to the fatigue lifetime of an OWT. A continuous 60-minute period (excluding transients) is simulated per wind speed to ensure statistical reliability, as prescribed in standards (IEC, 2009; DNVGL-RP, 2016). Environmental data for wind and wave excitation are taken from the lumped scatter diagram for the K13 shallow water side described in the UpWind design basis (Fischer et al., 2010).

The viscous damping coefficients are numerically optimized to match the desired output location, that is either the variance of tower top displacements, the variance of forces and moments acting on tower bottom or an equivalent fatigue load (EFL) from force and moment time series at tower bottom. Ideally, one would like to match the displacements at tower top for each time step and each degree of freedom. Obtaining a perfect match for tower top displacements would be equal to a substructuring technique thereby leading to an identical response in the support structure. However, decoupled models do not

always allow for matching tower top displacements due to non-zero shifts in mean or missing excitation frequencies that significantly contribute to the deflection of the tower. Hence, the variance of tower top displacements is often used to compare and evaluate a simplified analysis model (Schl er et al., 2016).

5 The tower bottom as an output location was chosen since it is an important location for fatigue checks in conceptual design phases and parameter studies. Moreover, it often serves as an interface between support structure designer and wind turbine supplier to exchange displacement or load time series during the design process.

An EFL provides a first rough estimate of the fatigue damage and basically describes a constant-amplitude load range that would cause an equivalent amount of damage as the original variable-amplitude load time series. It is calculated as

$$\text{EFL} = \left(\sum_{i=1}^N \frac{S_i^m}{N} \right)^{1/m} \quad (8)$$

10 where N is the number of load cycles applied, S_i is the load range amplitude at cycle i , and m is a material parameter, which is chosen to match the properties of welded steel for the support structure. This simple description of fatigue damage accumulation is based on W hler's equation (SN-curve), which assumes that each cycle of a constant load range amplitude causes a particular amount of damage, and that this damage is proportional to the load range amplitude raised to the power of m . Among the cycle counting techniques, the rainflow-counting algorithm (Amzallag et al., 1994) has been shown to match experimental results well and was used to determine the number of cycles, N , and the corresponding load amplitudes, S .

15 Additional and more comprehensive methods to compare the response from decoupled and integrated simulations exist. They have been discussed and tested in the course of this study and the preparation of this manuscript. Comparing the number of load cycles per load amplitude or calculating total EFL based on von Mises stress are two possible approaches. These approaches were inapplicable because of the strong non-linearity in the results or were not included to avoid introducing too much complexity in the postprocessing of the results. Hence, only variance or EFLs are used as an objective function in this study.

20 Plotting the ratio between the decoupled and integrated simulation over the viscous damping coefficient for variance or EFL showed that the ratio, in case that only one single viscous damper in wind direction is applied, is a monotonically decreasing function of the damping coefficient. Hence, Brent's method (Press et al., 1994) was utilized for finding the damping coefficient for the ratio 1.0, that expresses a perfect match between integrated and decoupled analysis.

25 For decoupled models with more than one viscous damper at tower top, the objective of the optimization is defined as minimizing the residual of the ratio between the response from the decoupled and the integrated model. In case that the optimization aims to match the variance of tower top displacements the function to minimize is given as

$$LMS_{TT} = \sqrt{\sum_{i=1}^6 \left(\frac{VAR_i^{DC}}{VAR_i^{IS}} - 1 \right)^2} \quad (9)$$

where VAR_i^{DC} and VAR_i^{IS} is the variance of tower top displacements from the decoupled (DC) and integrated (IS) simulation in one out of the six degrees of freedom, i . The objective function describes thereby the least mean square (LMS) of the variance of tower top displacements. Six variables have to be optimized simultaneously. Firstly, Brent's methods was used

for the optimization. The damping coefficient in wind direction was optimized before continuing with reaming coefficients. However, this successive optimization approach did not work out due to the highly non-linear optimization problem and the strong coupling between the damping coefficients. Hence, a stochastic search method is used to minimize the objective function. This does not guarantee that the global minimum is found, but it is sufficient for this study, since this paper does not aim to provide a methodology to obtain aerodynamic damping coefficients but aims to evaluate the accuracy and limitations of using decoupled simulations and linear dampers to represent the interaction between support structure and wind turbine rather than determining generally valid damping coefficients.

A genetic algorithm similar to the implementation in Schafhirt et al. (2014) is utilized for the optimization. The biological terminology used to briefly describe the main features of the algorithms follows the description in Holland (1975), where also more details about optimization with genetic algorithms can be found. In this study the damping coefficients were binary-coded and put together into a string with a length of 76 bits, representing a so-called chromosome. A population size of 15 individuals was chosen and considered sufficient, since the probability that every point in the search space is reachable from the initial population only by crossover already exceeds 99.5% (Reeves and Rowe, 2003). The initial population was randomly generated and loss of diversity was chosen as the stop criteria. A linear fitness scaling function was used and a mutation rate of 0.05 was chosen for the mutation process. This algorithm is computationally demanding since around hundred generations have to be simulated until the algorithm converges and the optimization usually has to be performed several times with different initial conditions in order to increase the likelihood that a global optimum has been found (Arora, 2012). The genetic algorithm was executed five times per loads case thereby leading to around 20.000 simulations performed for this study. However, a genetic algorithm is straightforward in implementation and simple to adjust for the desired optimization problem.

4 The offshore wind turbine model

Results presented in this paper are based on simulations with the generic OWT used within Phase I of the OC3 project (Jonkman et al., 2010). The OWT consists of the NREL 5 MW reference turbine (Jonkman et al., 2009) and a monopile support structure located in a water depth of 20 m. The 30 m monopile is rigidly clamped at sea bed and has a constant diameter of 6 m and a constant thickness of 0.06 m. The tower mounted on top of the monopile has a linearly tapered

diameter and thickness with a top diameter of 3.87 m and a top thickness of 0.019 m. The OWT has a hub height of 88.15 m. The turbine has a cut-in wind speed of 3 m/s and a cut-out wind speed of 25 m/s. Load simulations were therefore performed for 11 different wind speeds ranging from 4 m/s to 24 m/s with a step size of 2 m/s. The rated wind speed for this turbine is 11.4 m/s. Figure 1 illustrates the model of the OWT.

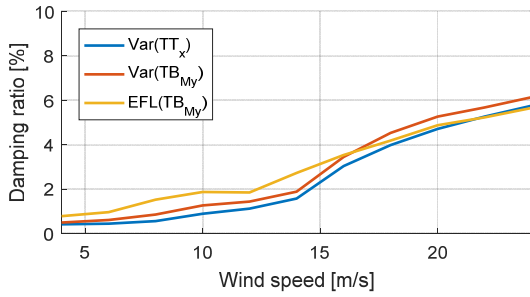
5 The model is implemented in the flexible multibody simulation tool Fedem Windpower (Version R7.2.1, Fedem Technology AS) in order to perform integrated dynamic analyses in time-domain. Two different implementations are used for this study. The first one, referred to as the integrated model, performs the dynamic analysis of the OWT under combined aerodynamic and hydrodynamic loading. The second implementation is the so-called decoupled wind turbine model, since the simulation of the rotor loads are decoupled from the dynamic analysis of the support structure. The same numerical model is used for
10 the second implementation, but aero-elastic simulations of the wind turbine are switched of. Instead aerodynamic loads are applied with force and moment time series acting on tower top. These time series were precomputed from an aero-elastic simulation of a standalone turbine model clamped on turbine bottom (see Fig. 1). These rotor loads do not include gravitational forces, since the numerical model of the OWT uses the detailed representation of the rotor-nacelle-assembly (identical to the integrated model). This also ensures that differences to the integrated analysis will not be caused by a
15 different representation of the rotor-nacelle-assembly. The dynamic interactions between rotor and support structure, mainly the aerodynamic damping, is represented in the decoupled model by a discrete dashpot at tower top. This study investigates four different types of decoupled models: A decoupled model with thrust force applied on tower top and one single viscous damper in wind direction (DC I), with thrust and overturning moment applied on tower top and one single viscous damper in
20 wind direction (DC II), with full rotor loads and one single viscous damper in wind direction (DC III), and with full rotor loads and viscous dampers in all degrees of freedom at tower top (DC IV).

5 Decoupled models with reduced rotor loads

The simplest dynamic analysis of an OWT using decoupled models is the implementation of the support structure in finite-element or multi-body software and the application of thrust time series as defined in section 2 on tower top (Abhinav and Saha, 2015; van der Male and Lourens, 2015). This simulation model is called the decoupled model DC I in this study. The
25 aerodynamic damping for this type of decoupled model is represented by a viscous damper acting in the direction of the wind and perpendicular to the rotor (here x-axis). The viscous damping coefficient is numerically optimized to match the integrated simulation regarding (1) the variance of tower top displacements in x-direction, (2) the variance of the overturning moment around the y-axis on tower bottom, and (3) the equivalent fatigue load of the overturning moment around the y-axis on tower bottom using Brent's method as described in section 3.

30 The coefficients found by the algorithm for the three above mentioned response locations were used to calculate a modal damping ratio for the first fore-aft mode, which is plotted for DC I against the wind speed in Fig. 2. The figure shows that

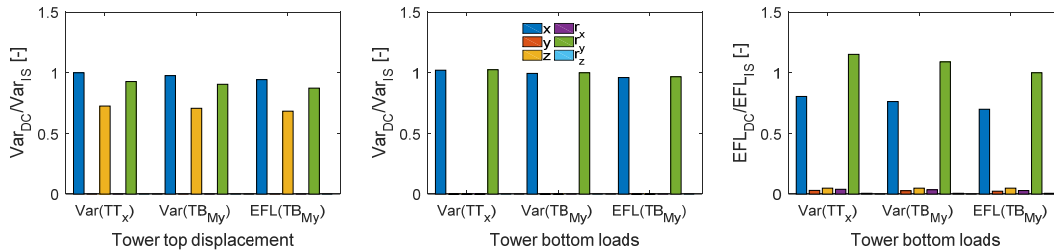
the empirically derived damping ratios increase almost continuously for increasing wind speeds. Exceptions can be observed for wind speeds around the rated wind speed of the turbine.



5 **Figure 2: Damping ratios optimized for different output for DC I. The three different curves show the damping ratio for matching the variance of the tower top displacement in x-direction (Var(TT_x)), the variance of the tower bottom bending moment around the y-axis (Var(TB_{My})), and the EFL of the tower bottom bending moment around the y-axis (EFL(TB_{My})).**

It is also interesting to compare the response on other output locations and directions for these empirically derived damping coefficients. Figure 3 and 4 show the ratio between the response from the decoupled and the response from the integrated simulation, for displacements at tower top, the variance of forces and moments at tower bottom and the equivalent fatigue loads from forces and moments at tower bottom for DC I. **A wind speed in the below-rated regime (8 m/s) and a wind speed in the above-rated regime (20 m/s) is chosen. It is expected that the behaviour between these regimes differs due to the pitch and torque controller, which are not active in the below-rated wind speed regime.**

10 **A wind speed in the below-rated regime (8 m/s) and a wind speed in the above-rated regime (20 m/s) is chosen. It is expected that the behaviour between these regimes differs due to the pitch and torque controller, which are not active in the below-rated wind speed regime.**



15 **Figure 3: Response for tower top displacements and tower bottom loads for DC I and a wind speed of 8 m/s. Damping coefficients matching the variance of the tower top displacement in x-direction (Var(TT_x)), the variance of the tower bottom bending moment around the y-axis (Var(TB_{My})), and the EFL of the tower bottom bending moment around the y-axis (EFL(TB_{My})) are chosen for the decoupled analysis. Each bar stands for a displacement or force/moment in one out of the six degrees of freedom.**

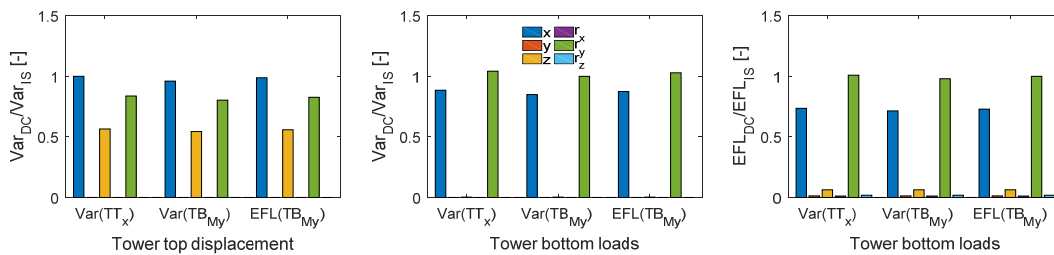
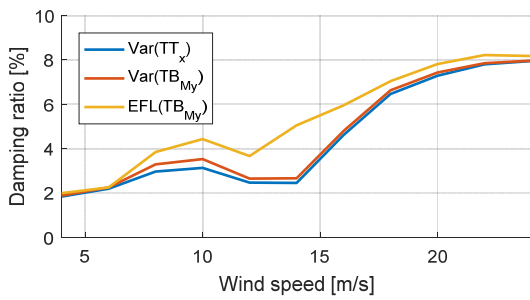


Figure 4: Response for tower top displacements and tower bottom loads for DC I and a wind speed of 20 m/s.

It can be seen that the variance for the translational tower top displacement in y-direction and the rotational displacements in x- as well as z-direction are highly underrepresented. The height of the bars for these output directions is within the line thickness of the plot. The same counts for the variance of forces in y- and z-direction as well as moments around the x- and z-axes at tower bottom. Only the equivalent fatigue loads for these output locations are slightly visible.

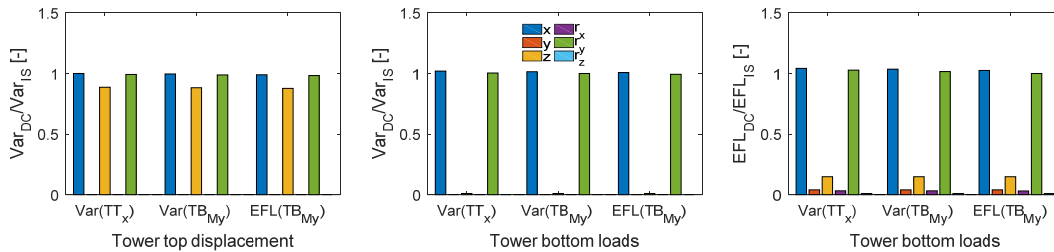
5 Moreover, the figures show that the response from a decoupled simulation does not exceed the response from an integrated simulation. This is an expected result, since for DC I only a thrust force is applied. This also shows that for this type of decoupled simulation only a single viscous damper in wind direction is necessary. Adding more dampers would only decrease the response further.

This leads to the decoupled model DC II that is often used in studies and in the conceptual design phase. For this model a bending moment around the y-axis is applied on tower top in addition to the already applied thrust force (Ong et al., 2017; Schløer et al., 2016). Again, the damping coefficient for the single viscous damper in wind direction was optimized to match the variance at tower top and tower bottom and the equivalent fatigue load at tower bottom, respectively. The calculated damping ratios for the first fore-aft mode are plotted against the wind speed in Fig. 5.



15 **Figure 5: Damping ratios optimized for different output for DC II.**

An increase of the damping ratio for higher wind speeds can be observed and is similar to results obtained for DC I, but results for wind speeds around rated wind speed differ somewhat. The damping ratios are generally higher compared to DC I, which is due to the additional moment acting on tower top.



20 **Figure 6: Response for tower top displacements and tower bottom loads for wind speed of 8m/s and DC II.**

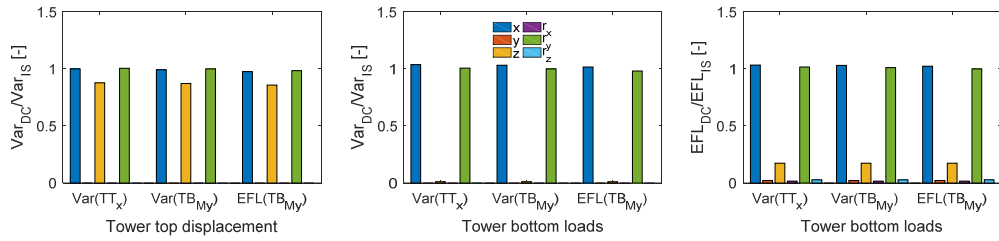


Figure 7: Response for tower top displacements and tower bottom loads for wind speed of 20m/s and DC II.

Figure 6 and 7 evaluates the response on tower top and tower bottom for the numerically derived damping coefficients for DC II for a wind speed of 8 m/s and 20 m/s. It can be seen that for all three optimization objectives (variance at tower top, variance at tower bottom, and equivalent fatigue load at tower bottom), the displacements and forces in x-direction and the displacements and moments around the y-axis matches the integrated simulation better than for the decoupled model DC I. In contrast to that, the response at other output locations is again highly underrepresented.

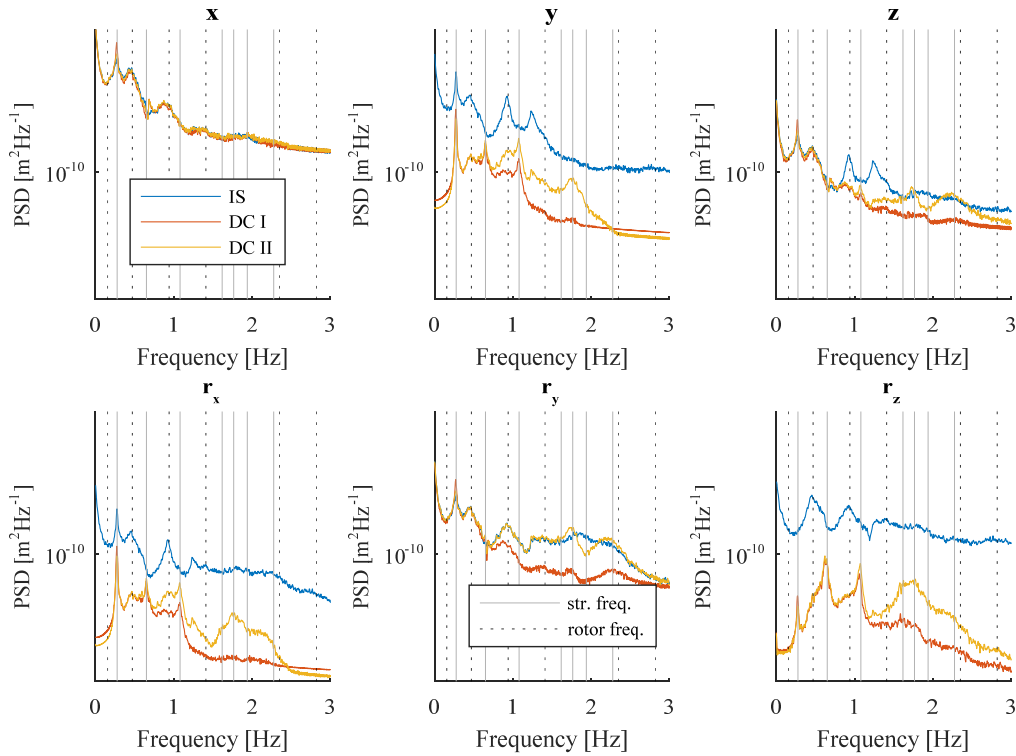


Figure 8: PSD for tower top displacements of DC I and DC II with a wind speed of 8 m/s. Continuous vertical lines show structural eigenfrequencies, while vertical dotted lines (-) show rotational frequencies of the rotor.

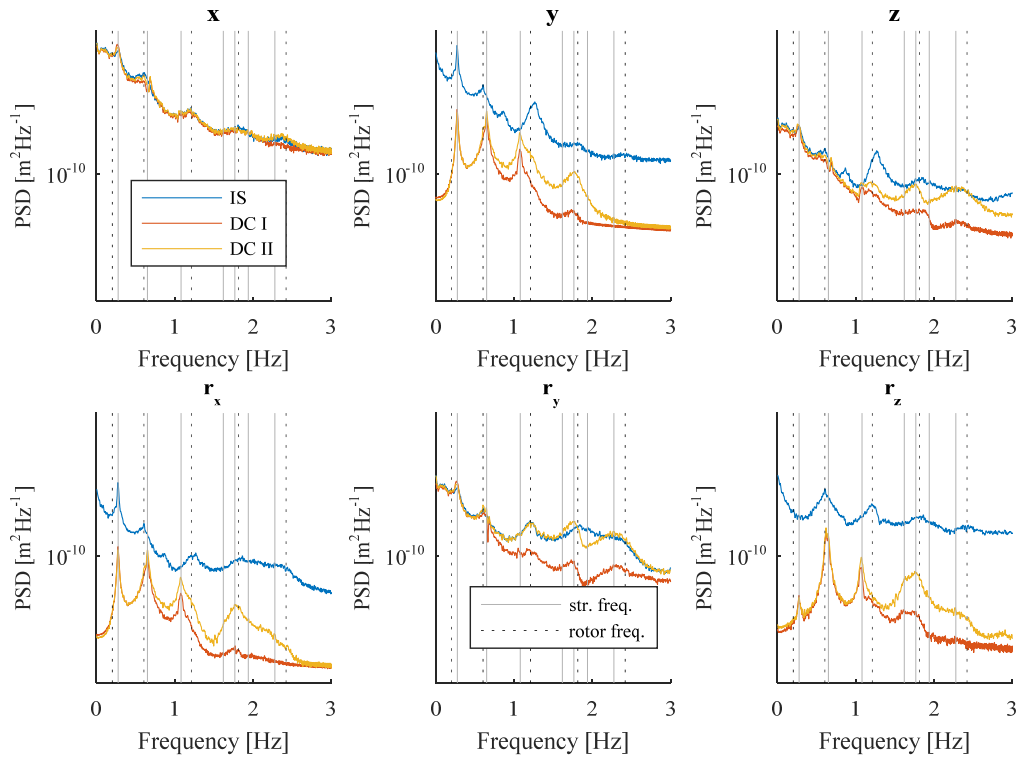


Figure 9: PSD for tower top displacements of DC I and DC II with a wind speed of 20 m/s.

An explanation can be found when looking at the power spectral density (PSD) for tower top displacements. Figure 8 and 9 display spectra for all six degrees of freedom at tower top for DC I and DC II with a damping coefficient numerically optimized for the variance of tower top displacements in x-direction and for a wind speed of 8 m/s and 20 m/s, respectively. The spectra for optimized variance and equivalent fatigue load at tower bottom show a similar behaviour and spectra are, therefore, only plotted for the optimization of variance at tower top in the further course of this paper. While the spectrum for displacements in x-direction and the rotational displacements around the y-axis for DC II fairly match, spectra for the four remaining directions show big differences. The spectra show that the energy content for the decoupled models is somewhat smaller than the one from the integrated simulation. The largest energy content is still in x-direction, but it seems that rotor loads in other directions cannot be neglected if the response of the decoupled model shall better match the integrated simulation. The figures also show that peaks between decoupled and integrated model typically occur at different frequencies. For example peaks in DC I and DC II are clearly visible in all spectra at a frequency of 1.07 Hz (one of the structural eigenfrequencies), but do not occur in spectra of the integrated model. On the contrary, the integrated model shows peaks at rotational frequencies coming from the rotor (e.g. at the 6P frequency of 1.21 Hz for a wind speed of 20 m/s). This observation applies likewise for DC I and DC II and for several structural and rotational eigenfrequencies. In order to include

the rotational frequencies, decoupled models with rotor loads acting in all directions at tower top are considered in this study. These models are referred to as decoupled models with full rotor loads.

6 Decoupled models with full rotor loads

The implementation of the support structure in finite-element or multi-body software is the same as the previously introduced decoupled models with reduced rotor loads. The single difference is that all six force and moment time series extracted from the standalone turbine simulation are applied on tower top. For the first decoupled model with full rotor loads a single viscous damper in wind direction is added on tower top (DC III), representing the aerodynamic interaction between turbine and support structure. A single damper in wind direction is chosen, since aerodynamic damping mainly damps the fore-aft motion of the wind turbine. As for DC I and DC II, Brent's method was utilized to optimize the damping coefficient with the objective to match the variance for tower top displacements in x-direction and the variance and equivalent fatigue load for the overturning moment (My) at tower bottom. Results are shown in Fig. 10.

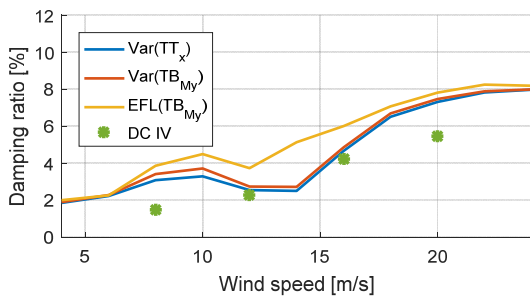


Figure 10: Damping ratio over wind speed for DC III and DC IV.

The curve closely matches the one for the decoupled model with reduced rotor loads (DC II). However, calculating the ratios for displacements, forces and moments at tower top and tower bottom shows a different behaviour now (Fig. 11 and 12).

The results of the decoupled model (DC III) are significantly higher now, compared to the previous shown decoupled models. In fact, the ratio for displacements for bending moments around the z-axis are up to four times higher for a wind speed of 12 m/s (not shown) and still almost three times higher for a wind speed of 20 m/s.

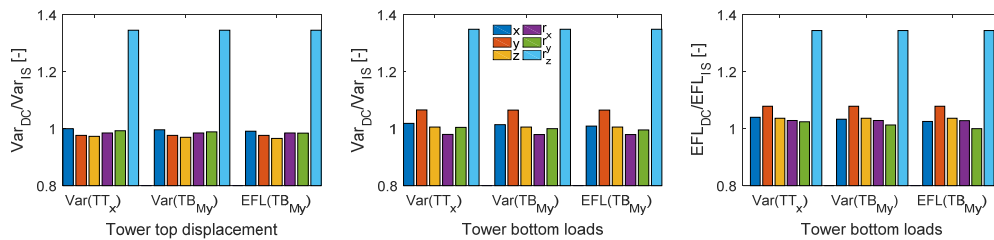


Figure 11: Response for tower top displacements and tower bottom loads for wind speed of 8m/s and DC III.

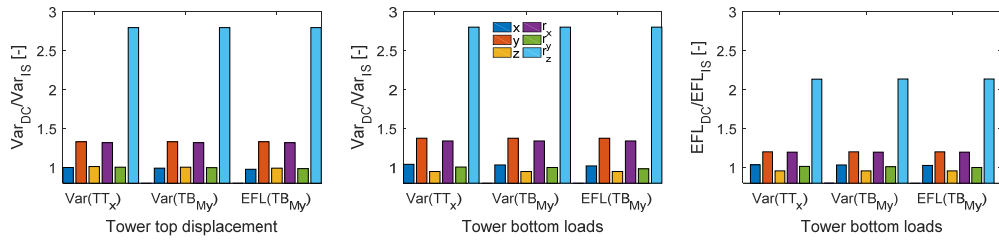


Figure 12: Response for tower top displacements and tower bottom loads for wind speed of 20m/s and DC III.

The PSD for tower top displacements in rotational z-direction (r_z) in Fig. 14 explains this difference. The peak at the rotational 3P frequency (0.6 Hz) is clearly larger for DC III compared to the integrated model. Structural eigenfrequencies at 1.07 Hz and 1.61 Hz for translational displacements in z-direction and rotational displacements in x direction, respectively, show larger differences to the integrated model likewise. Hence, additional damping is required in order to match the results of the integrated simulation. It seems that especially the torsion (rotational movement around the vertical axis) of the OWT has to be damped.

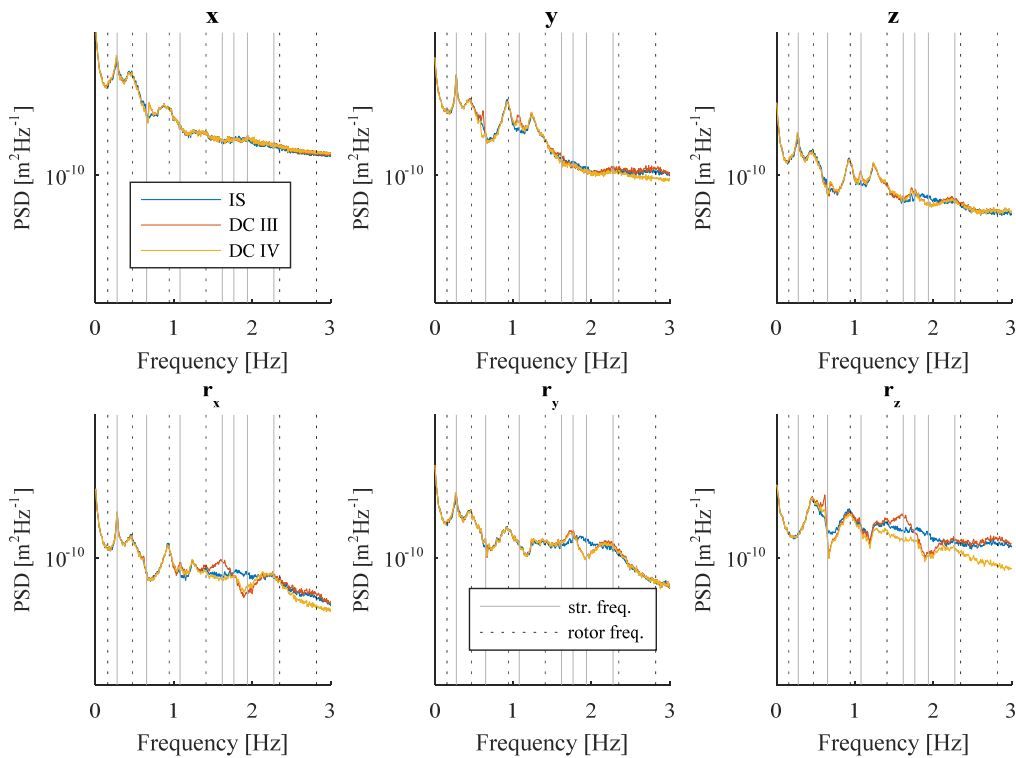


Figure 13: PSD for tower top displacements of DC III and DC IV with a wind speed of 8 m/s.

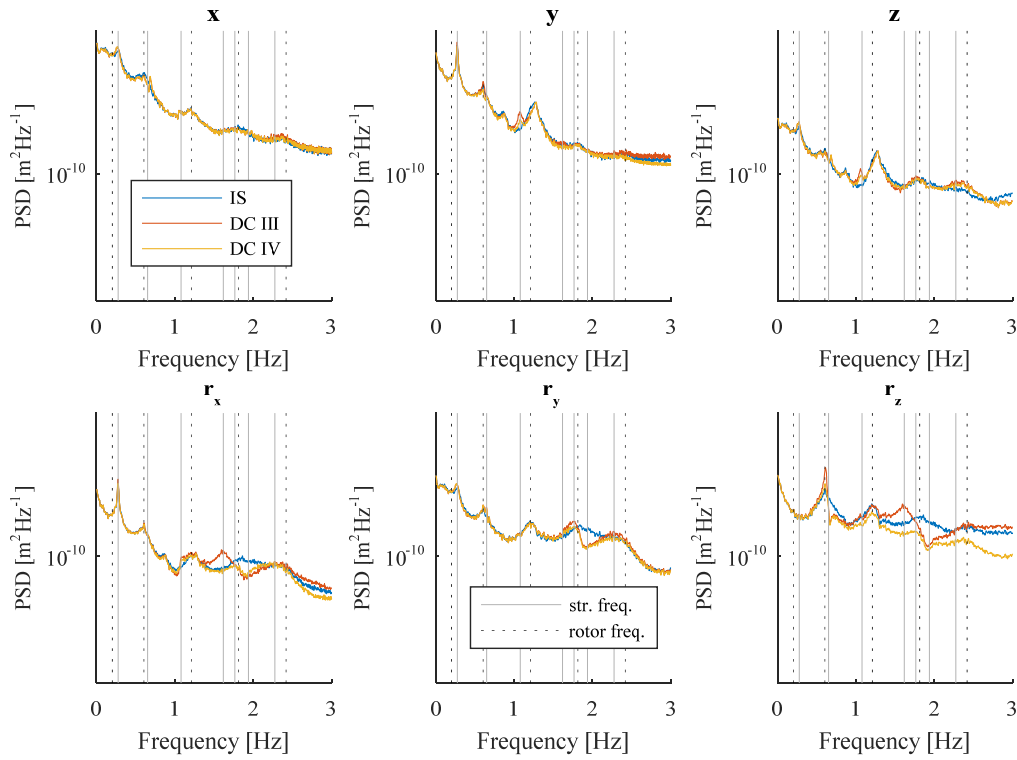


Figure 14: PSD for tower top displacements of DC III and DC IV with a wind speed of 20 m/s.

The fourth decoupled simulation that is analysed (DC IV) uses the precomputed rotor loads in all degrees of freedom on tower top (as DC III) and has in addition six viscous dampers in all translational and rotational directions at tower top. The aim was to adjust the damping coefficients for all six viscous dampers in such a way that the decoupled simulation model DC IV matches the variance at tower top in all six degrees of freedom of the integrated simulation. For this purpose the sum of the squared residuals (Eq. 9) is minimized using a genetic algorithm as described in section 3.

The optimization was performed for wind speeds of 8 m/s, 12 m/s, 16 m/s, and 20 m/s. Results in Fig. 15 and 16 show the ratio between the decoupled simulation using DC IV and the integrated simulation for variance of tower top displacements and the variance as well as the EFL for forces and moments at tower bottom in all six degrees of freedom for two wind speeds. The first plot (variance at tower top) shows that the genetic algorithm found a fair match for the displacements at tower top. However, also the variance and EFL at tower bottom differ only around 5% with the exception of the moment around the vertical axis where the decoupled simulation underestimates the EFL by around 7.5%. The PSD in Fig. 13 and 14 confirm this observation. Spectra for DC IV show a better match with the integrated model compared to the previous decoupled models. However, differences in energy content for different frequencies still occur.

A comparison in time-domain is shown in Fig. 17 and 18. The time-history response for displacements at tower top from an integrated analysis is compared to the response from DC IV. The response of DC IV follows the integrated simulation often

within the line thickness of the plot. The response from a decoupled model with full rotor loads, but without damper applied on tower top (DC IV nd), is included for comparison.

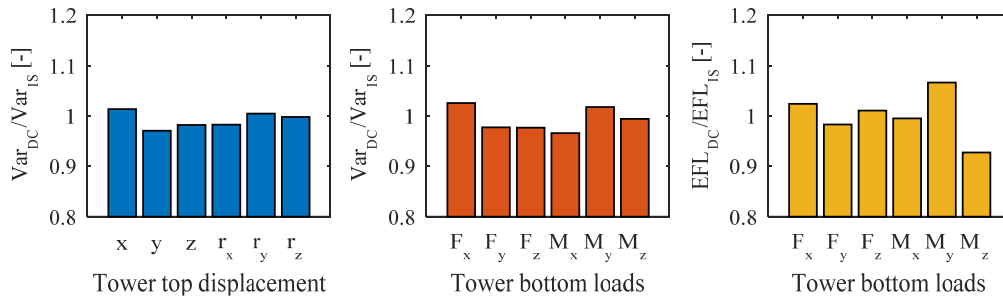


Figure 15: Response of tower top displacements and tower bottom loads for wind speed of 8m/s and DC IV.

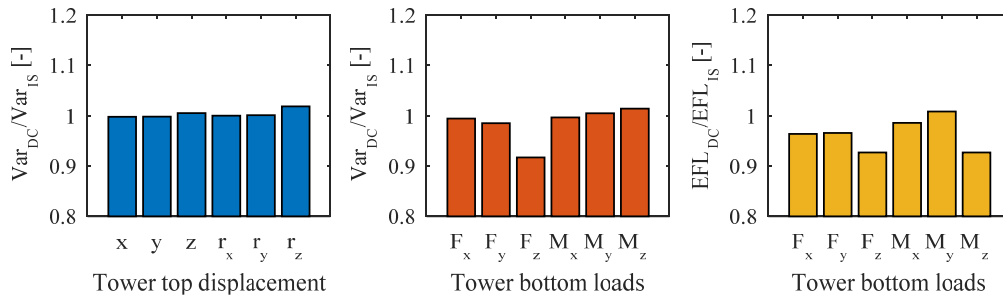


Figure 16: Response of tower top displacements and tower bottom loads for wind speed of 20m/s and DC IV.

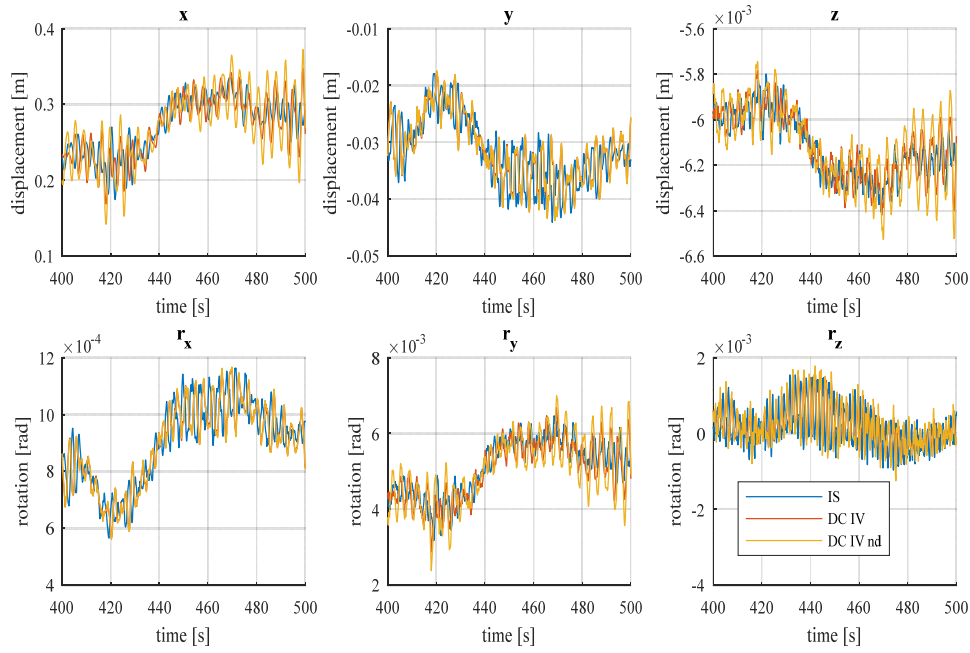
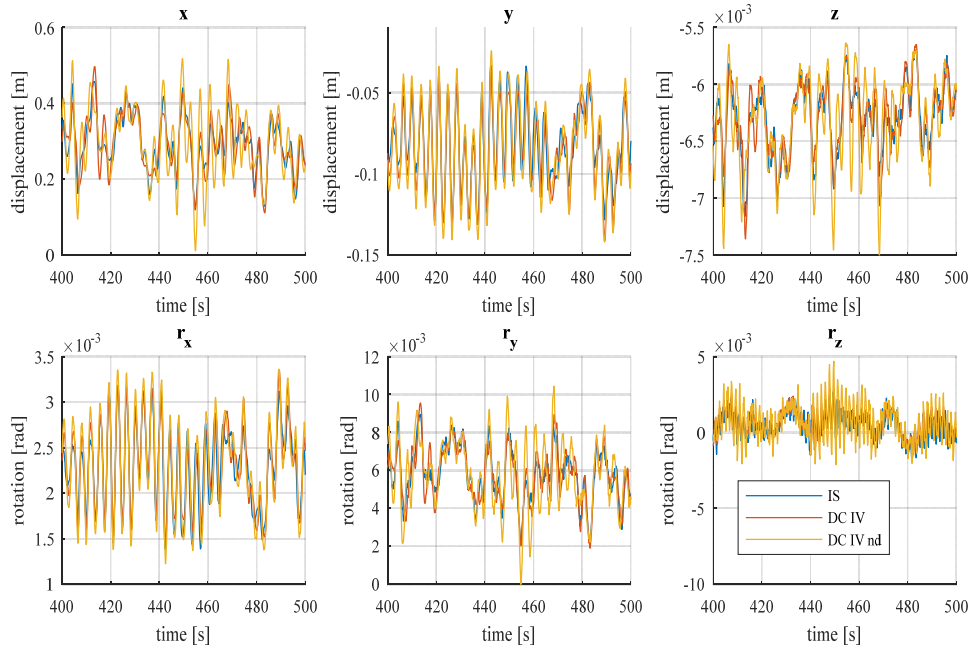


Figure 17: Time-history response for tower top displacements of DC IV with a wind speed of 8 m/s. The yellow curve (DC IV nd) shows the time-history response for a decoupled model with full rotor loads and no damper (nd) applied.



5 Figure 18: Time-history response for tower top displacements of DC IV with a wind speed of 20 m/s. The yellow curve (DC IV nd) shows the time-history response for a decoupled model with full rotor loads and no damper (nd) applied.

Finally, the damping coefficients for the linear damper in wind direction that were obtained from the optimization with the genetic algorithm for the four wind speeds under consideration, are used to calculate a damping ratio for the first fore-aft mode. The damping ratios are plotted together with the damping ratios over the wind speeds for DC III in Fig. 10. It can be seen that the damping ratios are slightly smaller due to more damper acting at tower top, but the damping ratios nevertheless increase further above rated wind speed. **A comparison of damping coefficients optimized for tower top variance among all four models subject to this study is shown in Fig. 19.**

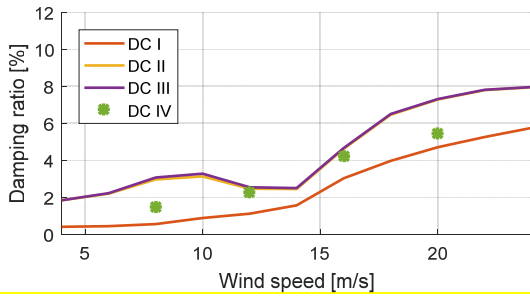


Figure 19: Damping ratio over wind speed for all decoupled models optimized for variance of tower top displacements.

The last results presented in this paper are the power spectral density for forces in x- and y-direction and the moment around the y-axis at tower bottom (Fig. 20 and 21). These output locations are select for a comparison among decoupled and integrated models, since they significantly contribute to the overall response at tower bottom (see Tab. 1 for a comparison of mean and standard deviation of forces and moments in all six degrees of freedom for the integrated analysis and wind speeds of 8 m/s and 20 m/s).

Table 1: Mean and standard deviation (STD) of forces and moments at tower bottom from integrated analysis.

Wind speed	Quantity	F_x	F_y	F_z	M_x	M_y	M_z
8 m/s	Mean	386.53 kN	-5.61 kN	-5778.42 kN	2.59 MNm	30.84 MNm	0.01 MNm
	STD	75.72 kN	7.14 kN	15.24 kN	0.67 MNm	5.97 MNm	0.92 MNm
20 m/s	Mean	318.33 kN	-27.31 kN	-5768.11 kN	6.64 MNm	27.08 MNm	0.24 MNm
	STD	81.68 kN	32.94 kN	29.00 kN	2.52 MNm	5.86 MNm	1.75 MNm

The spectra in Fig. 20 and 21 confirm the observations made before. Decoupled models with reduced rotor loads (DC I and DC II) exhibit a lack of rotational frequencies and show their peaks at mainly structural eigenfrequencies. In addition, their energy content is generally smaller due to fewer loads acting on tower top. The response from decoupled models with full rotor loads match the integrated simulation better with DC IV showing the best agreement with respect to the integrated model (e.g. at structural eigenfrequencies of 1.07 Hz and 1.61 Hz – visible for the force in y-direction).

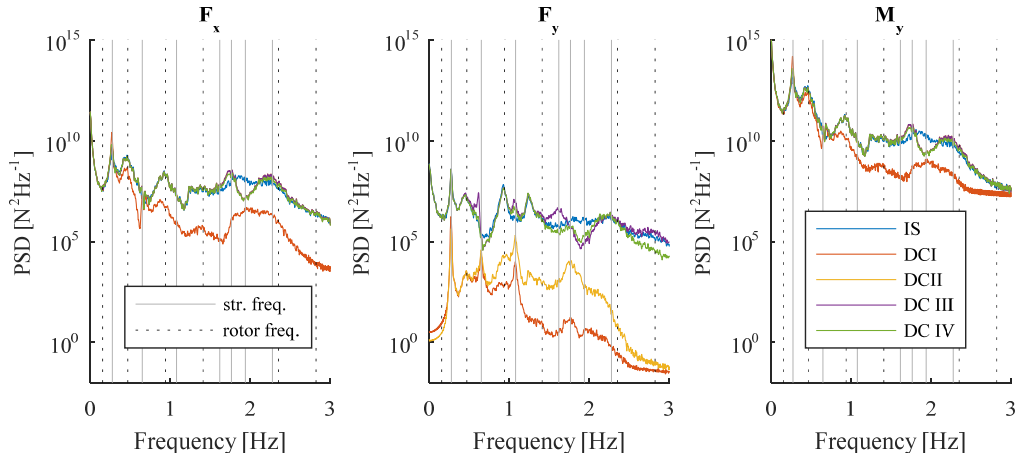


Figure 20: PSD for forces and moment at tower bottom for wind speed of 8 m/s

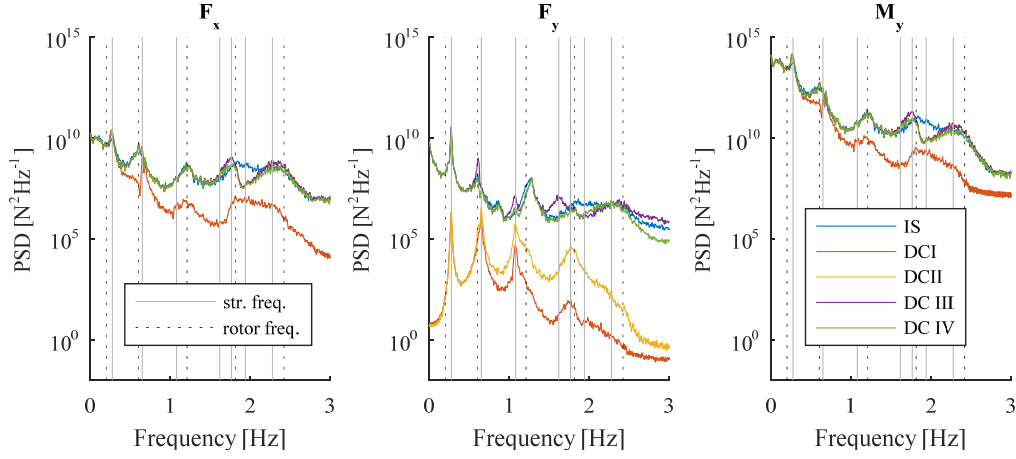


Figure 21: PSD for forces and moment at tower bottom for wind speed of 20 m/s.

5 7 Discussion

Results presented in the previous section show that it is possible to match the response of an integrated simulation at distinct output locations and particular directions with decoupled models. This is even possible with the simplest model (DC I), where only a thrust force is applied at tower top and a single linear damper in wind direction is chosen to represent the dynamic interactions between rotor and support structure. However, the response at other output locations or directions can strongly deviate from an integrated model. This was the case for both decoupled models, where only reduced rotor loads were applied (DC I and DC II). The reason is clear when looking at the PSD for these models. The response for these models is dominated by structural eigenfrequencies. These frequencies occur in the response of integrated models as well, but they are, apart from the first structural eigenfrequency, not as dominant as for the decoupled models with only thrust and overturning moment applied. It is also visible in the plots of the PSD that the first structural eigenfrequency is less dominant

for higher wind speeds (e.g. 20 m/s). This might explain why a single viscous damper applied in wind direction provides fair results for wind speeds below rated. For these wind speeds, the fore-aft motion is governing the response of the OWT.

The response of the integrated simulation for all wind speeds includes rotational frequencies of the rotor that partially have a larger impact on the response than the structural eigenfrequencies. This was visible through all of the PSDs shown in this paper. Hence, it is reasonable to apply rotor loads in all degrees of freedom at tower top in order to better match the response of an integrated simulation. The decoupled model with full rotor loads and one single viscous damper in wind direction (DC III) showed generally a better match than DC I and DC II when comparing their PSD with an integrated simulation. However, for a few output locations, the response became significantly higher, sometimes up to four times higher compared to the integrated analysis. Examination of the PSD showed that higher energy content mainly at structural eigenfrequencies is the reason for it. In order to compensate for this, translational and rotational dampers in all six degrees of freedom have to be applied at tower top, as it has been done for DC IV. This enables to match the most dominant frequencies, but higher frequencies still show deviations to the integrated simulation. Matching the higher frequencies will not be possible with a single linear damper.

The application of translational and rotational dampers in all six degrees of freedom together with full rotor loads leads to a fair match for output locations considered in this study with differences at the most of 7.5 %. This might be an answer for the time being to the question raised in the introduction, how accurate a linear damper can represent the dynamic interaction between rotor and support structure. **Moreover, the answer is based on simulation data and does not provide an answer for the linearity of (real) aerodynamic damping from an installed and operating offshore wind turbine. Measurement data have to be investigated and analysed in order to draw a conclusion on the linearity of real aerodynamic damping.**

A limitation of this study is that the method utilized in order to obtain results is not generally applicable to all support structures. Lattice support structures, such as jackets, are more complex and the responses at tubular joints, which are locations prone to fatigue, are not only driven by the fore-aft motion of the turbine (Popko et al., 2013). Generally it has to be kept in mind that the optimization of damping coefficients presented in this paper is only performed for one single monopile based OWT. Furthermore, only one set of load cases and only uni-directional wind and waves are considered. Results might differ for variations in environmental conditions or changes in the support structure design.

8 Conclusion

Wind turbine simulations with four different decoupled models using precomputed rotor loads were performed for this study. The decoupled models differ in number of rotor load time series applied on tower top and the number of viscous dampers representing the dynamic interaction between support structure and rotor. Results of tower top displacements and forces and moments at tower bottom were compared with an integrated simulation which is considered as providing accurate results. The damping coefficients for the viscous dampers were numerically optimized to match variance or EFL at tower top and

tower bottom. Three conclusions regarding the use of decoupled simulations for the dynamic analysis of support structures can be drawn:

The damping ratio for a viscous damper in fore-aft direction further increases for wind speeds above its rated value.

Analytically derived formulas to obtain the damping ratio for the fore-aft movement of a wind turbine show that the damping ratio stays constant or even slightly decreases for wind speeds above rated. However, the results presented in this paper show that for the OWT considered, the damping ratio constantly increases with higher wind speeds. This conclusion can already be found in Salzmann and van der Tempel (2005). It suggests that formulas presented to calculate aerodynamic damping for wind turbines do not adequately cover the entire range of dynamic interactions between rotor and support structure. It is thereby clear that using an engineering approach of 5% of critical damping for all wind speeds (van der Tempel, 2000) or formulas that predict such an uniform damping ratio above rated wind speed (Salzmann and van der Tempel, 2005) underestimate the damping caused by the rotor and should not be used when the simulation of the wind turbine aims to provide results as accurate as a decoupled simulation allows.

Depending on the desired output and wind turbine data available, a decoupled model using precomputed rotor loads from a fixed wind turbine simulation and a single damper in wind direction might be sufficient.

In fact, it is possible to perfectly match an integrated simulation for distinct output locations (e.g. overturning moment at tower bottom or variance of tower top displacements in fore-aft direction) with a decoupled simulation and only one single damper in fore-aft direction, but results at other output locations are highly underestimated when using reduced rotor loads (DC I and DC II) or did not show a clear trend when full rotor loads were applied at tower top (DC III). The choice to use a decoupled model for the dynamic analysis might be reasonable when indeed only output at a single location is required, such as the overturning moment at tower bottom or mudline, that can be a design criterion during a conceptual design phase or for a parameter study. Especially for a monopile based OWT with larger diameter where the response due to wave excitation is governing and the side-side motion is little, compared to the fore-aft motion of the turbine, a decoupled model might provide sufficiently accurate results. This will be different for jacket based OWT, where wave excitation is little, due to the lattice structure with small diameter tubes, and the importance of more than the overturning moment (e.g. also torsion) that will influence the axial force and out-of-plane and in-plane bending moment at jacket joints.

A decoupled model will also be the choice for a structural analysis, when a detailed rotor model is not available. Especially DC I has an advantage over the remaining decoupled models, since only a thrust force time series is required, which can, for example, be precomputed with available overall CT curves.

The decoupled model with full rotor loads and six dampers in translational as well as rotational displacements at tower top provided the best match for an integrated simulation.

A fair fit for damping coefficients was found for the four different wind speeds that were considered in this study (below rated as well as above rated wind speed) and results in terms of variance at tower top and variance and EFL at tower bottom differed at most by 7.5%. This is a significant improvement compared to the results of other decoupled models, where the ratio between decoupled and integrated response were sometimes around 4.0 or close to zero. However, the method to obtain the damping coefficients for all six viscous dampers

used in this paper is computationally demanding and impractical for industrial application. Hence, a more efficient method or formula to obtain optimal damping coefficients for viscous dampers is desirable. Moreover, since it is clear that the dynamic interaction between rotor and support structure cannot be perfectly represented by simple linear damping, a more sophisticated damping model that also damps higher frequencies is required.

5 Acknowledgments

Support by the Norwegian Research Centre for Offshore Wind technology (NOWITECH FME, Research Council of Norway, contract no. 193823) is gratefully acknowledged.

References

- Abhinav, K. A. and Saha, N.: Dynamic Analysis of an Offshore Wind Turbine Including Soil Effects, *Procedia Engineering* 116, 32–39, doi:10.1016/j.proeng.2015.08.261, 2015.
- Amzallag C., Gerey J., Robert J., and Bahuaud J.: Standardization of the rainflow counting method for fatigue analysis, *Int. J. Fatigue*, 164, 287–293, 1994.
- Arany, L., Bhattacharya, S., Macdonald, J., and Hogan, S. J.: Design of monopiles for offshore wind turbines in 10 steps, *Soil Dynamics and Earthquake Engineering* 92, 126–152, doi:10.1016/j.soildyn.2016.09.024, 2017
- Arora, J. S.: *Introduction to optimum design*, 3rd ed., Academic Press, 2012.
- Chen, B., Zhang, Z., Hua, X., Basu, B., and Nielsen, S. R. K.: Identification of aerodynamic damping in wind turbines using time-frequency analysis, *Mechanical Systems and Signal Processing* 91, 198–214, doi:10.1016/j.ymssp.2017.01.010 , 2017.
- Cheng, J., Jianhua, Z., and Lei, Y.: Reliability Probability Evaluation of Wind Turbine Based on Monte-Carlo Simulation, *Proc. China International Conference on Electricity Distribution (CICED)*, IEEE, doi:10.1109/CICED.2012.6508638, 2012.
- Devriendt, C., Weijtjens, W., El-Kafafy, M., and De Sitter, G.: Monitoring resonant frequencies and damping values of an offshore wind turbine in parked conditions, *IET Renew. Power Gener.*, 8, 433–441, doi:10.1049/iet-rpg.2013.0229, 2014.
- DNVGL-RP: *Fatigue design of offshore steel structures*, DNV GL Recommended Practice C203, 2016.
- DNVGL-ST: *Support structures for wind turbines*, DNV GL Standard 0126, 2016.
- Dong, W., Moan, T., and Gao, Z.: Long-term fatigue analysis of multi-planar tubular joints for jacket-type offshore wind turbine in time domain, *Engineering Structures*, 33, 2002–2014, doi:10.1016/j.engstruct.2011.02.037 , 2011.
- Fischer T., de Vries W., and Schmidt B.: *UpWind Design Basis, WP4 : Offshore Foundations and Support Structures*, 2010.

- Garrad, A. D.: Forces and dynamics of horizontal axes wind turbines, Freris, L.L., Ed., Wind energy conversion systems, Prentice-Hall, New York, 119–142, 1990.
- Hansen, M. H., Thomsen, K., and Fuglsang, P.: Two Methods for Estimating Aeroelastic Damping of Operational Wind Turbine Modes from Experiments, *Wind Energy*, 9, 179–191, doi:10.1002/we.187, 2006.
- 5 Hansen, M. O. L.: Aerodynamics of wind turbines, 2nd ed., Earthscan, 2008.
- Holland, J. H.: Adaptation in Natural and Artificial Systems: An introduction analysis with applications to biology, control, and artificial intelligence, University of Michigan Press , 1975.
- IEC: Wind turbines – Part 3: design requirements for offshore wind turbines. International Standard IEC-61400:3, International Electrotechnical Commission, 2009.
- 10 Jonkman J., Butterfield S., Musial W., and Scott G.: Definition of a 5-MW Reference Wind Turbine for Offshore System Development, Technical Report No NREL/TP-500-38060, 2009.
- Jonkman J. and Musial W.: Offshore code comparison collaboration (OC3) for IEA task 23 offshore wind technology and deployment, Technical Report No NREL/TP-5000-48191, 2010.
- Kaufner, D., Cosack, N., Böker, C., Seidel, and M., Kühn, M.: Integrated Analysis of the Dynamics of Offshore Wind Turbines with Arbitrary Support Structures, Proc. European Wind Energy Conf., EWEC, 2009.
- 15 Kim, D. H. and Lee, S. G.: Reliability analysis of offshore wind turbine support structures under extreme ocean environmental loads. *Renewable Energy*, 79, 161–166, doi:10.1016/j.renene.2014.11.052, 2015.
- Kramers, H. C., van der Valk, P. L. C., and van Wingerden, J.-W.: Statistical Evaluation of the Identified Structural Parameters of an idling Offshore Wind Turbine, *J. Physics: Conf. Series* 753, doi:10.1088/1742-6596/753/5/052006, 2016.
- 20 Kühn, M.: Dynamics and Design Optimization of Offshore Wind Energy Conversion Systems, PhD Thesis, Wind Energy Research Institute, TU Delft, 2001.
- van der Male P. and Lourens, E.: Operational Vibration-Based Response Estimation for Offshore Wind Lattice Structures, *Structural Health Monitoring and Damage Detection*, 7, 83–96, doi:10.1007/978-3-319-15230-1_9, 2015.
- 25 Muskulus, M.: Simplified rotor load models and fatigue damage estimates for offshore wind turbines, *Phil. Trans. R. Soc. A*, 373, doi:10.1098/rsta.2014.0347, 2015a.
- Muskulus, M.: Why Design Load Calculations for Offshore Wind Turbine Support Structures Cannot Use Load Time Series from Moving Rotors, Proc. 25th Int. Ocean and Polar Eng. Conf., ISOPE, 525–529, 2015b.
- Muskulus, M. and Schafhirt, S.: Design Optimization of Wind Turbine Support Structures—A Review, *J. Ocean and Wind Energy*, 1, 12–22, 2014.
- 30 Muskulus, M. and Schafhirt, S.: Reliability-based design of wind turbine support structures, Li, J., Chen, J., Peng, Y., Spanos, P. D., Eds., International Association for Structural Safety and Reliability (IASSAR): Hangzhou, China,, 2015.

- Ong, M. C., Bachynski, E. E., and Økland, O. D.: Dynamic Response of a Jacket-Type Offshore Wind Turbines using decoupled and coupled Models, *Journal of Offshore Mechanics and Arctic Engineering*, 139, doi:10.1115/1.4035772, 2017.
- Ozbek, M. and Rixen, D. J.: Operational modal analysis of a 2.5 MW wind turbine using optical measurement techniques and strain gauges. *Wind Energy*, 16, 367–381, doi:10.1002/we.1493, 2013.
- Press, W. H., Teukolsky, S. A., Vetterling, W. T., and Flannery, B. P.: *Numerical Recipes in Fortran – The Art of Scientific Computing*, 2nd Edition, Cambridge University Press, 1994.
- Reeves, C. R. and Rowe, J. E.: *Genetic Algorithms: Principles and Perspectives - A Guide to GA Theory*, Kluwer Academic Publisher, 2003.
- 10 Salzmann, D. J. C. and van der Tempel, J.: Aerodynamic damping in the design of support structures for offshore wind turbines, *Proc Offshore Wind Energy Conference*, Copenhagen, Denmark, 2005.
- Schafhirt, S., Zwick, D., and Muskulus, M.: Reanalysis of jacket support structure for computer-aided optimization of offshore wind turbines with a genetic algorithm. *Journal of Ocean and Wind Energy*, 2014.
- Schafhirt, S., Verkaik, N., Salman, Y., and Muskulus, M.: Ultra-fast analysis of offshore wind turbine support structures using impulse based substructuring and massively parallel processors. *Proceedings of the twenty-fifth International Ocean and Polar Engineering Conference*, 301–308, 2015.
- 15 Schlør, S., Castillo, L. G., Fejerskov, M., Stroescu, E., and Bredmose, H.: A model for quick load analysis for monopile-type offshore wind turbine substructures, *J. Physics: Conf. Series* 753, doi:10.1088/1742-6596/753/9/092008, 2016.
- Seidel, M., von Mutius, M., Rix, P., and Steudel, D.: Integrated analysis of wind and wave loading for complex support structures of Offshore Wind Turbines. *Proc. Copenhagen Offshore Wind*, 26-28, 2005.
- 20 Shirzadeh, R., Weijtjens, W., Guillaume, P., and Devriendt, C.: The dynamics of an offshore wind turbine in parked conditions: a comparison between simulations and measurements. *Wind Energy*, 18, 1685–1702, doi:10.1002/we.1781, 2015.
- van der Tempel, J.: *Lifetime Fatigue of an Offshore Wind Turbine Support Structure*, PhD Thesis, Wind Energy Research Institute, TU Delft, The Netherlands, 2000.
- 25 van der Tempel, J. and de Vries, W.: Frequency Domain Calculation of Offshore Wind Turbine Response to Wind and Wave Loads, *DUWIND, Proc. Copenhagen Offshore Wind Conf.*, 2005.
- van der Valk, P. and Rixen, D.: Impulse based substructuring for coupling offshore structures and wind turbines in aero-elastic simulations. *Proc. 53rd Struct. Dyn. Mater. Conf.*, AIAA, 2012.
- 30 Weijtjens, W., Shirzadeh, R., De Sitter, G., and Devriendt, C.: Classifying resonant frequencies and damping values of an offshore wind turbine on a monopile foundation for different operational conditions, *Proc. European Wind Energy Association, EWEA*, 2014.

Popko, W., Vorpahl, F., and Antonakas, P.: Investigation of local vibration phenomena of a jacket sub-structure caused by coupling with other components of an offshore wind turbine. Proceedings of the 23rd Int. Ocean Polar Eng. Conf., 336–344, 2013.

5 Ziegler, L., Voormeeren, S., Schafhirt, S., and Muskulus, M.: Sensitivity of Wave Fatigue Loads on Offshore Wind Turbines under Varying Site Conditions, Energy Procedia, 80, 193–200, doi:10.1016/j.egypro.2015.11.422, 2015.