

# Response To Review 1:

Thank you for a very thorough review with many good suggestions! We have tried to incorporate all suggestions and document the changes. In some places we have added new analysis, and we have revised all sections to improve the focus of the paper in accord with your comments.

We have organized the changes made by topic in this document (but have kept your numbering for reference). All responses are in red, and following this, a version of the paper with changes highlighted is attached so all changes can be easily identified.

## Clarifying title/abstract/purpose/results

*Title and abstract of the paper are promising more than the paper actually delivers, as*

*no new concept of flow control is developed or presented, but is only suggested.*

### **1. Title and abstract: Please relate the title and abstract more to the content of the paper**

We agree with this critique. After re-thinking the major objective of this paper, the title has been changed to “A simulation study demonstrating the importance of large-scale trailing vortices in wake steering”. The main goal of this paper is to demonstrate, through LES simulation, how vortices are important to understanding wake steering. This change has likewise caused changes in language to the abstract, introduction and conclusion.

*Also, the term “new physics” should be replaced by a more specific term.*

- This term is removed everywhere, and more specific language employed

## Additional model details

### FLORIS

### **2. P01. L26: Since the focus of study is on the interaction of multiple wakes, it is**

*necessary to briefly introduce how multiple wakes are modeled in FLORIS and what is*

*missing. A more detailed description of FLORIS would fit better into section 2.*

- This is now included and additional references are provided. Here is the new text on FLORIS:

*This paper focuses on two specific wind farm models. First, FLORIS, is a low-fidelity, control-oriented tool for wind farm control, which includes several possible wake models developed by NREL and TU Delft*

*Geeraad et al. (2016). FLORIS is python-based, open source, and available for download on github (<https://github.com/WISDEM/FLORIS>). The overall approach of FLORIS is to provide an engineering model of wakes that predicts the important average behaviors of wakes in a computationally efficient way such that it can be used to derive control strategies through optimization or function as an internal controller model. A recent report compares predictions of the latest FLORIS model to lidar data from a utility-scale wind turbine operating in yaw and provides good agreement (Fleming et al. (2017a)).*

*In this work, the wake model used in this paper assumes a Gaussian wake that is derived from self-similar turbulence theory (Bastankhah and Porté-Agel (2014, 2016); Niayifar and Porté-Agel (2015)). The wake expands linearly and the parameters of this Gaussian wake are a function of ambient turbulence intensity and turbine operation. Overlapping wakes are combined using a sum-of-squares approach that has been used previously in literature (Katić et al.). It is important to note that there are alternative methods to combine wakes as wake superposition is an ongoing research topic (Macheaux and Mann (2015), Trabucchi et al. (2017)).*

*Wake deflection is also included in this model based on the yaw misalignment of a turbine. It is modeled using a budget analysis of the Reynolds Averaged Navier-Stokes equations. For further details, the reader is referred to (Bastankhah and Porté-Agel (2016)).*

*14. P03. L05: Some brief description of the FLORIS model, especially the handling of multiple wakes and the assumed natural wake deflection, may help a reader for following the comparative studies.*

- Description of FLORIS model is expanded as above, and the assumed natural deflection angle is specified in the one turbine section.

*20. P03. L20: “the two models have been used” -> FLORIS and SOWFA? There is no real separation between Chapter 2 “Models” and Chapter 3 “Method”. This seems rather unusual.*

- This has been clarified and the models and methods chapters are combined

## **SOWFA**

**3. P04. L09: Besides a mean wind speed of 8 m/s (hub height?) no further information on the inflow condition are given. Similar to past studies? To what extent? This part should be improved by adding further inflow characteristics (e.g. inflow profiles, TI, . . .)**

- Paragraph has added details:
- All simulations in this paper are of a neutral atmospheric boundary layer, with a mean-wind speed at hub height of 8 m/s, similar to what has been used in past studies (Fleming et al.

(2015)). This simulation had 6% turbulence intensity with a shear exponent of 0.085. The domain size is 5 km x 1.8 km x 1 km. The simulations include National Renewable Energy Laboratory's (NREL's) 5-MW reference turbines from Jonkman et al. (2009), modeled as an actuator disk for computational efficiency. In previous work, the actuator disk model with rotation has shown to be comparable to an actuator line model in predicting power (c.f. Porté-Agel et al. (2011); Martínez-Tossas et al. (2015))

23. P03. L28: Why averaging the flow for 1600s? What is the reason for this specific amount of time?

- The goal was to average as much time as possible, given the computational time limits of our computing system (two days of running time allowed per job on most queues). The first 400 seconds are removed by calculating the time a wake would take to propagate through the area of analysis.

29. P04. L01: How do you determine the averaged flow?

- The following sentence is added: The averaged flow is provided directly via OpenFOAM output functions.

31. P04. L12: "this method has shown to be comparable to an actuator line model in predicting power" -> To what extent?

- We've added two references to this sentence:
- In previous work, the actuator disk model with rotation has shown to be comparable to an actuator line model in predicting power (c.f. Porté-Agel et al (2011); Martínez-Tossas et al (2015))

36. P05. L12: "However, this natural deflection in non-yawed conditions is not observed in simulations without the Coriolis effect . . ." -> add reference

- This sentence was based on internal, but not yet published results, and we have decided to remove it so that we can further validate before stating in a publication

62. P13. L02: Please provide the averaging time of the SOWFA simulations

- This is now included

18. P03. L16: It seems that the actuator disc with rotation is used in the SOWFA simulations. It should be clarified.

- This is now stated explicitly in this sentence: In this approach, the SOWFA simulation includes one turbine modeled as an actuator disk with rotation

## Wake combinations

*Technically the analysis of the simulation studies is good, the chosen visualizations mostly allow to detect the differences between the two models.*

*Unfortunately, the very short description of the models makes it difficult to fully believe the argumentation of the authors.*

*The authors might overstate the influence of the observed vortices on the difference between LES-model and engineering model. An analysis or discussion of other potential sources, e.g. wake superposition, turbine model, flow entrainment, is missing.*

*7. P10. L10: Please also discuss the other potential sources for the deviations between FLORIS and SOWFA. While the baseline cases indeed show a good agreement, wake superposition is a potential source of error, e.g. wake superposition, turbine model, flow entrainment, especially for half-wake conditions (see e.g. Machefaux, “Multiple wakes”, 2015 or Trabucchi et al., “3-D shear-layer model for the simulation of multiple wind turbine wakes: description and first assessment”, 2017), which is essentially what is happening when the wake of the upwind turbine is deflected.*

- This is a really excellent point and we thank the reviewer for the suggestion. We performed some additional simulations to test these suggestions, and based on those results added an entirely new section titled “discussion of secondary steering”. The section includes a new figure which compares a yawed two-turbine scenario with a partial-wake (but not yawed) scenario.

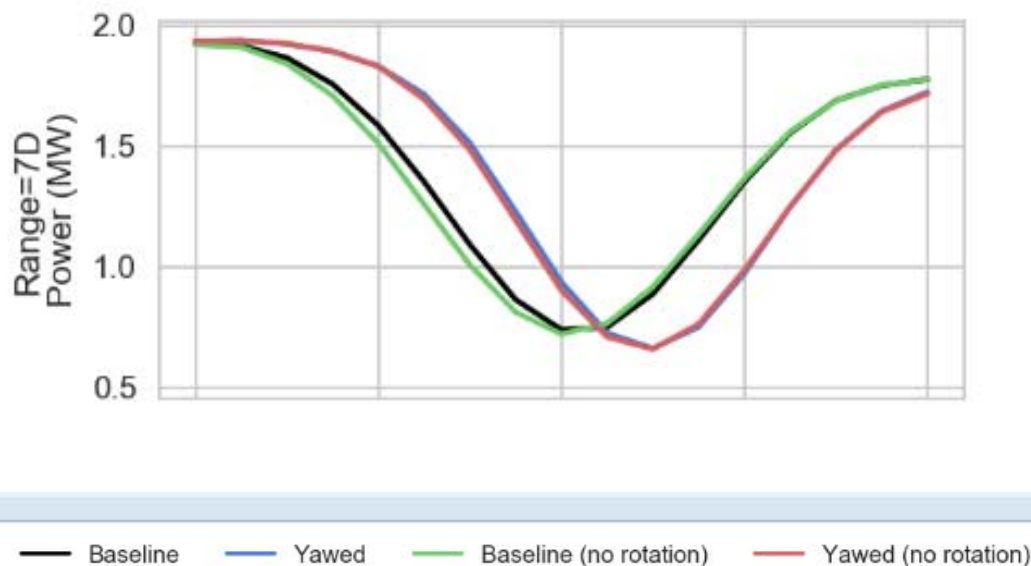
## Actuator Disk Model

*6. P10. Figure 7: It seems that the employed FLORIS model only considers the wake deficit for modeling multiple wakes and does not consider the superpositions of deflected wakes by upwind turbines. Since FLORIS benefits from the generic AD*

*model, it might be good to be evaluated with a LES model with the non-rotating AD model as well. Moreover, conducting such observations provides a clear view on the physics of the counter-rotating vortices.*

44. P06. 08: The analysis was performed with a AD model of the turbine. The results look like the rotation of the rotor is included. Often this is not the case if an AD implementation is used. Therefore, this should be clearly stated when the model is introduced whether the rotation of the rotor is included or not. In case it is not included it should be commented on: To what extent could the results differ in a model that takes rotation into account? Is the use of “only” an AD model justified for this type of investigation.

- Thank you also for these useful suggestions. We have re-run the baseline, and yawed cases over again with rotation disabled (through a change to the SOWFA code). This figure shows the wake “profiles” between the rotating and not rotating cases (taken 7D behind the downstream turbine) are very similar:



## Proposed solutions

**8. How could the FLORIS model be potentially improved? Or which further analysis are required before such recommendations could be substantiated?**

- We have revised the conclusion to summarize what was shown in the paper, and then to discuss how improvements could be made and used:

*In this paper, the role of flow structures, particularly a pair of counter-rotating vortices, generated in wind farm control through yaw misalignment was investigated. These vortices were shown to be important in (1) deforming the shape of the wake, (2) in explaining the asymmetry of efficacy in wake steering of oppositely signed yaw angles (rather than the currently used natural deflection angle), and (3) in understanding how a "steered" wake interacts with a downstream wake and with laterally adjacent wakes. These findings are critical for developing an effective, robust strategy for wind farm control.*

*One important finding of the paper was that, because of the presence of these vortices, a steered wake can deflect the wake of downstream turbine, even if that turbine is not yawed, a process called "secondary steering". A second finding was that combinations of wakes from yawed turbines are shown to involve merging of generated cross flows. These combinations can lead to changes in power generation that are different than adding the changes of yawing individual turbines.*

*In ongoing research at NREL, new engineering wake models which contain these behaviors due to the generated vortices are under development to be incorporated into FLORIS. Once completed these new models will be compared to similar SOWFA data sets to determine if they can resolve all discrepancies. Such new models, can then be used to develop new wind farm controllers. These new wind farm controllers can be optimized to take advantage of the controllability afforded by the vortices ability to manipulate the flow and will yield a more powerful form of wake steering than currently exists.*

## On the lack of wake center definition

**5. P07. L03: "there does not appear to be any deflection" -> Due the colorbar it is**

***impossible to see any details of the flow structure. It indeed looks like no deflection of the wake took place. But what is YOUR definition of wake? Could some wake tracking be applied in order to make a reliable and clearer statements?***

*also*

**49. P09. L02: Mention the method used for obtaining the wake center**

- This sentence revised to:

- *As a first qualitative observation of the baseline cases, there does not appear to be any natural deflection (this will be further examined later).*
- Then below in the discussion of the power profiles, the analysis is expanded to discuss this using that figure for a more quantitative inspection of deflection. We also add an additional paragraph to further emphasize the power profile comparison method used here, with comparison based on wake center identification:
- *One advantage of using this method to compare wake predictions between models is that it focuses on the comparison on the quantity of interest, which is the power production of turbines at a given location. Rather than trying to identify a wake center, focus is shifted from how far the centroid of deficit is shifted, to how much expected power production is possible at a given location. This will be important, if for example, focus shifts from wake deflection to energy entrainment.*

## Introduction and References to Literature

*9. P01. L10: The first part should include a few more literature references. The literature review on engineering models is limited just like the one about the interaction of multiple wake.*

*Furthermore, there have been early wake deflection studies in the wind tunnel which might be worth mentioning.*

- Thank you for this suggestion, this was a large oversight, and has been remedied, the following paragraph and references are added:
- *Early research in this field used wind tunnel experiments to demonstrate the possibility of wake steering. Experiments presented in Dahlberg and Medici showed that for example, wake steering implemented in a two turbine row could yield a total relative power gain of 10%. In Medici and Alfredsson (2006), the wake of a model wind turbine in a tunnel was measured. When the turbine was yawed, the wake was deflected, and additionally, vortex shedding was observed which was similar in behavior to what would be expected from solid discs. In Wagenaar et al wake steering is studied at a scaled wind farm.*
- Dahlberg, J. and Medici, D.: Potential improvement of wind turbine array efficiency by active wake control, in: European Wind Energy Conference, 2003.
- Medici, D. and Alfredsson, P.: Measurements on a wind turbine wake: 3D effects and bluff body vortex shedding, Wind Energy, 9, 219–236, 2006.
- We have also discussion on the provided literature on new research in wake combination

10. P01. L13: *“Early work in wake steering . . .” This sentence somehow suggests that first investigations of wake steering were performed using computational fluid dynamics. In the years before, however, multiple investigations were carried out in the wind tunnel. Please consider rephrasing this part.*

- This is rephrased, the above paragraph now defines the early work, and this paragraph now begins with “Later work...”

11. P01. L22: *“The model is shown to predict the behavior of wake steering and . . .”. If the model does predict the behavior of wake steering why do we need other models? What are the weaknesses of the model? Consider adding further details or rephrase the statement.*

- This sentence has been made more precise to say that the model accurately predicted wake steering for a given set of CFD simulations of particular conditions:
- *The model was shown to predict the behavior of wake steering for a given set of CFD simulations (focused largely on two-turbine, and fully waked scenarios) and, given its execution speed, can be used to design controllers as well as look at coupled wind farm layout and controls optimizations.*

13. P03. L01: *The 1st and 2nd objectives of the paper seem similar. They might be combined or rephrased.*

- This paragraph has been re-written as follows, to track the change in emphasis through the title/abstract/discussion:
- *In this paper, a CFD-based analysis is used to examine how the consideration of the counter-rotating vortices can impact wind farm control analysis and design. This paper undertakes an investigation of the impact of these vortices on yaw-based wake control. The contributions of this paper are first a demonstration that a deflection-only control-oriented model of wind farm control can not reconcile all observed effects, even for to some extent for a single turbine wake case. A second contribution is the demonstration that the influence of the vortices is especially critical when arrays of multiple turbines are considered. A steered wake of an upstream turbine is shown to deflect the wake of an aligned turbine downstream, and combinations of steered turbines are shown to involve merging of generated cross flows. The discussion section considers*



*how wind farm control, based on the generation of specific large-scale structures, and not on geometrical deflection, could be different and more effective than current methods. The future work recommendations conclude that incorporating the shed vortices into engineering models used to design wind farm controllers can improve performance and should be undertaken.*

15. P03. L03 and L19: The 3rd objective is not addressed enough through the paper.

*The described approach of a hypothetical wind turbine downstream (in section 3) is introduced for reducing computational efforts of the simulation studies. It might be also good to discuss the benefits of this method for wind farm control research.*

- The objectives paragraph has been reworded (also including review 2 comments) (along with abstract and conclusion.) Paragraph now reads:  
*In this paper, a CFD-based analysis is used to examine how the consideration of the counter-rotating vortices can impact wind farm control analysis and design. This paper undertakes an investigation of the impact of these vortices on yaw-based wake control. The contributions of this paper are first a demonstration that a deflection-only control-oriented model of wind farm control can not reconcile all observed effects, even for to some extent for a single turbine wake case. A second contribution is the demonstration that the influence of the vortices is especially critical when arrays of multiple turbines are considered. A steered wake of an upstream turbine is shown to deflect the wake of an aligned turbine downstream, and combinations of steered turbines are shown to involve merging of generated cross flows. The discussion section considers how wind farm control, based on the generation of specific large-scale structures, and not on geometrical deflection, could be different and more effective than current methods. The future work recommendations conclude that incorporating the shed vortices into engineering models used to design wind farm controllers can improve wind farm control performance and should be undertaken.*

17. P03. L06: Who developed the two models? References

- Development citations added for both FLORIS and SOWFA and explicit reference made to developers

19. P03. L18: “.Churchfield et al.” Reference Typo

- This is fixed

30. P04. L04: Reference for FAST

- Reference added

**4. P05. L08:** *In the paper of Fleming 2015 this has only been investigated for the specific case that the upstream turbine is yawed and the downstream turbine has no lateral offset. Can you conclude that there are no cases where a negative yaw offset would be beneficial?*

- You are right, this sentence needs to be qualified in order to be accurate. It has been rephrased to:
- *For example, in the simulation study in Fleming 2015, where two 5MW turbines are aligned directly in the flow, after deducting the power lost because of yaw on the first turbine, only positive yaw produces an overall gain in power for a case of two turbines separated by 7 diameters (note this wouldn't be true for example in certain partial overlap cases).*

**21. P03. L20:** *In the 1st paragraph, some references for past research would be beneficial.*

- These examples have been added.

**35. P04. L27:** *Please distinguish between the approach of the current paper and the approach of the prior studies in the previous paragraph.*

- The following sentence has been added: *This way, rather than results from a handful of turbine positions, a continuum of turbine locations can be considered.*

## Technical questions

**52. P09. L07:** *What about negatively yawed conditions?*

- We don't see a major discrepancy for this tuning of FLORIS, however, were we to re-tune FLORIS to remove the error on the positive side, the expectation is error would rise in the baseline and negative cases

**65. P15. L03:** *Is there a specific reason for choosing 3.5D?*

- This is halfway between all the rows. This could be for example 6D, the visualization is broadly similar.

43. P06. 03: *“cut-through slices of the flow at a distance downstream of the turbine.”*

-> flow = longitudinal velocity component?, vertical slice?

- The following sentence is added: *These cut-through slices are cut cross-wise through the flow direction, and include the average value of all velocity components.*

51. P09. L07: *“Under positively . . .”* Should it be “7D and more” instead of 5D? No

*results are shown for distances greater than 5D and smaller than 7D.*

- This is corrected

64. P14 L3: *Please specify that Fig.13 corresponds to “YawAll” scenario. Moreover, a bar graph helps to evaluate the results.*

- This is now specified.

66. P16. L14: *Are you not influencing the wake generation and due to this the characteristics of the downstream flow. Therefore, the focus is still on controlling the wakes, because they are your tool to influence the entire flow.*

- The conclusion has been reworded

## Figures

### Horizontal Slices

25. Figure 1: Colorbar?

- The colorbar is added

26. Figure 1: *Without a grid or ticks the use of the tick labels is limited*

- Tick marks have been added

27. *Figure 1: View from above down at the plants?*

- This is now specified in the caption

28. *Figure 1: Consider including a sketch to define positive and negative yaw offsets*

- The following text is added: Fig 1. illustrates a turbine in positive yaw in the convention used of positive being a counter-clockwise rotation when viewed from above.

33. *P04. L04: Please consider adding the coordinate system to Figure 1*

- Tick marks are added to clarify location, is this what is meant?

53. *Figure 6: Same comments as for Figure 1 (greyscale of colorbar, ticks, grid, . . .)*

- These matching changes have been made

54. *Figure 7: Same comments as for Figure 1 (greyscale of colorbar, ticks, grid, . . .),*

*add “at hub height” in the caption*

- These changes are made

## Cut-through slices

37. *Figure 3: It should be clearly stated whether the wake flow is looked at from upstream or downstream*

- Upstream, this is now indicated in the caption

38. *Figure 3: The color scheme should be avoided since information is lost when printed in greyscale.*

- If it is acceptable to the reviewer, we would like to keep this color scheme. The first reason is because there are places where the flow is slightly accelerated, and the red/blue format is helpful in seeing positive/negative changes. The second reason is to be consistent with our other publications.
- To aid in visual clarity, several contour lines are overlayed, we hope this compensates

39. *Figure 3: Why are the limits of the colorbar -2 m/s to 2 m/s. Are there any positive values at all?*

- This is chosen so that no change can be clearly indicated as gray. Also, because there are some positive increases to show (for example beneath the negatively steered wake).

40. Figure 3: Grid lines or ticks should be added

- These are added

42. Figures 3,4,8,13: Please add a reference scale for the arrows to be able to see the magnitude of the vortices.

- This scale is now included

41. Figure 3 and Figure 4: Merging both figures would certainly make it easier for the reader to compare the impact of a positive and negative yaw misalignment on the shape of the wake.

- Figures 3 and 4 are now merged

45. Figure 4: Same comments as for Figure 3

- Merged with 3

55. Figure 8: Same comments as for Figure 3

- Comments included for Fig 8 as well

56. Figure 8: Caption “visualization of FLORIS 2D”, add SOWFA

- This is corrected

57. Figure 8: YLabel: Everything is stated in “D”. Here no explanation is given, the D is missing and X is introduced. Compare labeling with Figure 13

- This has been fixed to match Fig 13, and visualization improvements from fig 3 and 4 included

## Hypothetical power plots

47. Figure 5: Caption: “showing good agreement . . .” -> Consider moving the analysis to the main text.

- This was in text, so removed redundant text from caption

48. Figure 5: yaxis labeling for right column missing

- This is fixed

58. Figure 9: Same comments as for Figure 5

- This is fixed

## Grammar and Style and clarity

12. P02. L16: Typo: "to changing a the deficit"

- Corrected

16. P03. L06: "models of wind farms" -> wind farm models?

- Corrected

22. P03. L27: "{ see Fig 1.}" Typo, unnecessary space before "see".

- Corrected

24. P03. L29: "by an additional hypothetical at some point" Typo, "turbine" missing?

- Corrected

32. P05. L03: "+/- 25°U<sub>e</sub>" The degree sign does not show up right in the reviewed ° draft. Please verify if this is a typo.

- The appearance of the degree symbol has been corrected here and throughout the paper

34. P05. L07: "For example, in Fleming . . ." Please consider rephrasing this sentence due to its complex structure.

- This sentence has been revised

46. P07. L02: "Visual inspection indicates some discrepancies . . ." -> In the following sentence an example about a similarity is given. Consider rephrasing.

- This sentence is removed

50. P09. L07: "Under positively . . ." Should it be positively offset?

- This change has been made

59. Figure 9: Caption: "Power of a hypothetical behind" -> Word missing "turbine"

- This is corrected

60. P13. L02: ". . . three-turbine cases, A . . ." Typo

- This is corrected

61. P13. L02: "A final case simulates a tightly spaced wind farm is used to further explore . . ." -> Grammar?

- This sentence has been adjusted

63. P13 L17: The statement "we can compare the result of summing the effects of . . ."

is not clear enough. It might be reformulated better.

- Revised to: *Then in the analysis, we can compare the results of summing the effects of individually yawed turbines from separate simulations ("sumInd") in post-processing to the case of simultaneously yawing all turbines within the simulation.*

# Response to review 2

Thank you very much to the reviewer for the constructive and helpful criticism!

Responses the reviewer's points are included in red, and following is a version with track changes so actual changes can be easily identified. Note some figures have been merged/added because of comments made by reviewer 1, and almost all figures have been updated.

## Descriptions of contributions and results

1. The title is somehow misleading: It is clear after the reading why you chose the title (your result #2, the suggestion), but actually don't really "control the flow" but you analyze the effect of yawing wind turbines.

This is right, and we have made edits to the title, abstract, introduction to address this. The paper has been retitled to "A simulation study demonstrating the importance of large-scale trailing vortices in wake steering". And we hope all sections have been adjusted in a way which reflects this improved focus and clarity.

2. This brings me to another important point: you nicely describe new effects which are very important for wind farm control. This deserves from my opinion more credits. It is somehow included in your contribution #1 (demonstration that FLORIS cannot describe it), but might be good to highlight it more in a positive way.

Agreed, this point is now explicitly called out in the abstract and introduction.

3. In this way, your contributions #1 and #2 might be also be more specific to the new effects: i) A upwind wake steers the wake of a un-yawed turbine (see Figure 6 and 2nd and 3rd row in Figure 11) and ii) and the wakes of wind turbines in the same row have interactions which are unneglectable (sumInd different from



yawAll in Figure 11). The original contributions #1 and #2 are also overlapping.

4. The contributions #3 and #4 are very similar to your results #2 and #1. However, the finding and description of the new effects are missing in the listing of the results. Further, the points i) Suggestion: “we need to control the flow and not only steer the wakes” and ii) Motivation: “this requires new models” are important but still quite vague to be listed as the main results of a scientific paper.

These comments are also correct, and we have strived to improve the treatment of the contributions and conclusions with greater clarity. For example, the last paragraph of the introduction has been re-written as follows:

*In this paper, a CFD-based analysis is used to examine how the consideration of the counter-rotating vortices can impact wind farm control analysis and design. This paper undertakes an investigation of the impact of these vortices on yaw-based wake control. The contributions of this paper are first a demonstration that a deflection-only control-oriented model of wind farm control can not reconcile all observed effects, even for to some extent for a single turbine wake case. A second contribution is the demonstration that the influence of the vortices is especially critical when arrays of multiple turbines are considered. A steered wake of an upstream turbine is shown to deflect the wake of an aligned turbine downstream, and combinations of steered turbines are shown to involve merging of generated cross flows. The discussion section considers how wind farm control, based on the generation of specific large-scale structures, and not on geometrical deflection, could be different and more effective than current methods. The future work recommendations conclude that incorporating the shed vortices into engineering models used to design wind farm controllers can improve performance and should be undertaken.*

Which we hope more clearly underlines what is shown in the paper, and what is the subject of future work.

5. Addressing a similar issue: Your structure is: 1. Introduction, 2. Models, 3. Methods, 4-6 results, 7 conclusions. Sections 4-6 could be renamed to be more consistent, e.g. “one turbine case”, “two turbine case”, and “Multiple turbine case”.  
Or: “Results for two turbines”, “results for three turbines”, “results for a wind farm” or similar. The current section titles are a little bit confusing.

These suggestions are included and merged with suggestions from the reviewer 1 to clarify the section headings

### Missing details

Since a large portion of the paper is to compare FLORIS to SOWFA and to show the limits of it, it would be helpful to describe it in more details.

We agree, reviewer 1 made the same suggestion, and we have added details throughout the paper including:

- Additional details on FLORIS wake merging mechanism
- Details on SOWFA actuator disk model
- Details on atmospheric properties of the inflow used
- Additional references on FLORIS and SOWFA

### Other minor issues

1. The ° sometimes is not a superscript, e.g. 2nd line of Section 4 and caption

Figure 3.

The degree signs have been regularized throughout the paper

2. Figure 3: Linking the arrow size to a wind speed might be helpful to get a better feeling for the effects.

Yes, all images with cross-flow arrows now include a reference arrow of 1 m/s indicated

3. Figure 4: Period is missing at end of caption.

Figure 3 and 4 merged according to comment of review 1

4. Figure 5 and 9: ylabel of 2nd column is missing.

Added

And maybe the plots look

smoother when you use a higher discretization (now it seems to be 0.2 D).

They do, this is now done.

5. Figure 8: ylabel missing.

Added

And plots are too small. Maybe you could limit it to -2 D  
and +7 D.

We've tried to improve the visibility of the figure, by including recommendations of reviewer 1 and additionally, adding contour lines, and reducing the density of quiver arrows.

6. Figure 9: "turbine" missing behind "hypothetical".

Fixed

7. Figure 10: The zero-indexing might be confusing. Why not turbine 1 to 12 and  
"yaw 1" to "yaw 3"?

This is to be consistent with the turbine names within SOWFA, which is zero-indexed. However, this can be changed of course in the text.

# ~~From~~ A simulation study demonstrating the importance of large-scale trailing vortices in wake steering ~~to flow control~~

Paul Fleming<sup>1</sup>, Jennifer Annoni<sup>1</sup>, Matthew Churchfield<sup>1</sup>, Luis Martinez<sup>1</sup>, Kenny Gruchalla<sup>1</sup>, Michael Lawson<sup>1</sup>, and Patrick Moriarty<sup>1</sup>

<sup>1</sup>National Wind Technology Center, National Renewable Energy Laboratory, Golden, CO, 80401, USA

*Correspondence to:* Paul Fleming (paul.fleming@nrel.gov)

**Abstract.** In this paper, we investigate the role of flow structures generated in wind farm control through yaw misalignment. A pair of counter-rotating vortices are shown to be important in deforming the shape of the wake and in explaining the asymmetry of wake steering in oppositely signed yaw angles. We also demonstrate that vortices generated by an upstream turbine that is performing wake steering can deflect wakes of downstream turbines, even if they are themselves aligned.

- 5 We motivate the development of ~~new physics for improvements to~~ control-oriented engineering models of wind farm control, ~~which to~~ include the effects of these large-scale flow structures. Such a new model would improve the predictability of control-oriented models. ~~Results presented in this paper indicate that wind farm control strategies, based on new~~ Further, we demonstrate that the vortex structures created in wake steering can lead to greater impact on power generation than currently modeled in control-oriented ~~models with new physics, that target total flow control over wake redirection may be different, and~~
- 10 ~~perhaps more effective, than current approaches~~ models. We propose that wind farm ~~control and wake steering should be thought of as the generation of large-scale flow structures, which will aid in the improved performance of wind farms~~ controllers, can be made more effective if designed to take advantage of these effects.

## Copyright Statement

- The author's copyright for this publication is transferred to Alliance for Sustainable Energy, LLC. Alliance for Sustainable
- 15 Energy, LLC is the manager and operator of the National Renewable Energy Laboratory. Employees of the Alliance for Sustainable Energy, LLC, under Contract No. DE-AC36-08GO28308 with the U.S. Dept. of Energy, have authored this work. The United States Government retains and the publisher, by accepting the article for publication, acknowledges that the United States Government retains a non-exclusive, paid-up, irrevocable, worldwide license to publish or reproduce the published form of this work, or allow others to do so, for United States Government purposes."

## 1 Introduction

Wake steering is a wind farm control concept where the upstream turbines are intentionally misaligned to deflect its wake away from a downstream turbine (Wagenaar et al. (2012).) Although the turbine upstream loses power because of this misalignment, the downstream turbine can be shown to yield a large gain to produce a net increase in power.

5 Early research in this field used wind tunnel experiments to demonstrate the possibility of wake steering. Experiments presented in Dahlberg and Medici (2003) showed that for example, wake steering implemented in a two turbine row could yield a total relative power gain of 10%. In Medici and Alfredsson (2006), the wake of a model wind turbine in a tunnel was measured. When the turbine was yawed, the wake was deflected, and additionally, vortex shedding was observed which was similar in behavior to what would be expected from solid discs. In Wagenaar et al. (2012), wake steering is studied at a scaled  
10 wind farm.

Later work in wake steering made assessments of the technique using computational fluid dynamic (CFD) simulations of small arrays of wind turbines. For example, Fleming et al. (2015) examined wake-steering performance for an offshore array of two turbines separated by 7 diameters, and observed an increase in total power.

In order to design controllers to implement wake-steering control strategies, it is necessary to build engineering models that  
15 contain the relevant physics but are described in a computationally efficient way such that the model can be used in large-scale optimizations or used as an internal model within a real-time controller. A first model of wake steering, based on CFD analysis, was provided by Jiménez et al. (2010). The model predicts wake deflection as a function of yaw angle and thrust coefficient.

In Gebraad et al. (2016), an engineering wake model, known as FLORIS (Flow Redirection and Induction in Steady-State) was introduced. The model combined the wake-steering model of Jiménez et al. (2010) with the wake recovery model of  
20 Jensen (1984). In addition, this model separates the wake into zones that recover at different rates. The model ~~is~~ was shown to predict the behavior of wake steering ~~and~~ for a given set of CFD simulations (focused largely on two-turbine, and fully waked scenarios) and, given its execution speed, can be used to design controllers as well as look at coupled wind farm layout and controls optimizations (c.f. Gebraad et al. (2017)). In this model, the wake appears as a deficit of energy that flows downstream and is characterized as (i) an initial deficit determined by the turbine thrust, (ii) a rate of recovery determined by topology, i.e.  
25 FLORIS inherits wake-recovery parameters from the Jensen model whose values are set by rules of thumb for onshore/offshore, and (iii) a wake deflection caused by wake-steering. This version of FLORIS was used to design a strategy for wake steering that was tested at a commercial offshore wind farm in Fleming et al. (2017b) with an improved wind farm power performance under waked conditions.

More recently, the FLORIS model has been improved by incorporating the theoretical models of wake behavior and steering  
30 presented in Bastankhah and Porté-Agel (2014, 2016); Niayifar and Porté-Agel (2015). One of the improvements was the inclusion of turbulence to describe the wake recovery. Turbulence in turbine wakes is generated by ambient wind conditions as well as turbine operating conditions. These critical changes greatly improve the general applicability of models such as FLORIS. For example, wake expansion and the recovery are now dependent on ambient and induced turbulence intensity, which can resolve the modeling discrepancies observed in Annoni et al. (2016).

To date, engineering models are beginning to include modeling of the main atmospheric components (turbulence intensity, veer, and shear) needed to accurately predict and control wakes via wake steering. The basic conception of wake steering remains that a rotor operating in misaligned conditions creates a force perpendicular to the flow that generates the deflection in wake direction and decreases the thrust and overall velocity deficit in the wake. Further, based on Bastankhah and Porté-Agel (2014, 2016); Niayifar and Porté-Agel (2015), the change in thrust also impacts recovery rate. Wind tunnel tests in Schottler et al. (2017) and Bartl and Sætran (2017) show good agreement overall with these latest models.

However, recent research has ~~shown~~underlined that in addition to changing ~~a~~the deficit and location of a wake, yaw misalignment changes other properties in the flow, which can be observed as impacting the shape of the wake. In Vollmer et al. (2016), large-eddy simulations (LES) are used to study the behavior of wake steering under varying atmospheric conditions. The authors note that the shape of the wake under yawed conditions is curled rather than circular. This curvature is shown to impact the estimate of the wake center. Further, the authors explain the change in shape by showing that the cross-flow wind of an aligned turbine is largely due to counter-rotating vortices that appear in the flow behind a yawed turbine and generate this distortion. This is consistent with the results of Medici and Alfredsson (2006).

Howland et al. (2016) studies the curled wake phenomenon experimentally using a porous actuator disk and with LES using an actuator disk and an actuator line model. The curled wake is observed in experiments and simulations. The mechanism behind the curled wake is again explained as a pair of counter rotating vortices which are shed from the top and bottom of the rotor due to yaw misalignment. This mechanism was ~~later~~confirmed by Bastankhah and Porté-Agel (2016).

In Fleming et al. (2017a), a rear-facing nacelle-mounted lidar is used to scan the wake of a turbine in aligned and yawed conditions at five locations downstream ranging from 1 diameter to approximately 3 diameters. The deflection predicted by earlier simulation models is clearly observed as well as the curling of the wake shape.

The current state of control-oriented models supposes that the change in wake “location” and strength can be well modeled as a deflection of a wake generated with a lower thrust. In other words, the effect of the counter-rotating vortices on the flow is assumed to be captured in the engineering models that modify only the deflection, deficit and recovery of the wake. A curled wake of some deflection amount might be well-enough described by a circular wake of larger deflection.

In this paper, a CFD-based analysis is used to examine how the consideration of the counter-rotating vortices can impact wind farm control analysis and design. This paper undertakes an investigation of the impact of these vortices on yaw-based wake control. The contributions of this paper are first a demonstration that a deflection-only control-oriented model of wind farm control can not reconcile all observed effects~~when considering multiple turbines directly downstream, even, to some extent, for a single turbine wake case~~. A second contribution is the demonstration that the influence of the vortices is especially critical when arrays of multiple turbines are considered. A ~~third contribution is a proposed new approach of steered wake of an upstream turbine is shown to deflect the wake of an aligned turbine downstream, and combinations of steered turbines are shown to involve merging of generated cross flows. The discussion section considers how~~ wind farm control~~based on this analysis. Finally, the paper proposes recommendations for improvements to control-oriented modeling, based on the generation of specific large-scale structures, and not on geometrical deflection, could be different and more effective than current methods.~~

The future work recommendations conclude that incorporating the shed vortices into engineering models used to design wind farm controllers can improve wind farm control performance and should be undertaken.

## 2 Models

This paper focuses on two specific ~~models of wind farms~~ wind farm models. First, FLORIS, is a low-fidelity control-oriented ~~model of tool for~~ wind farm control, which includes several possible wake models ~~-In this work, we focus on the most-recent models proposed by Bastankhah and Porté-Agel (2014, 2016); Niayifar and Porté-Agel (2015). The FLORIS model developed by NREL and TU Delft Gebraad et al. (2016). FLORIS is python-based, open source, and available for download on github (https://github.com/WISDEM/FLORIS). The overall approach of FLORIS is to provide an engineering model of wakes that predicts the important average behaviors of wakes in a computationally efficient way such that it can be used to derive control strategies through optimization or function as an internal controller model. A recent report compares predictions of the latest FLORIS model to lidar data from a utility-scale wind turbine operating in yaw and provides good agreement (Fleming et al. (2017a)). Annoni et al. (2018)).~~

In this work, the wake model used in this paper assumes a Gaussian wake that is derived from self-similar turbulence theory (Bastankhah and Porté-Agel (2014, 2016); Niayifar and Porté-Agel (2015)). The wake expands linearly and the parameters of this Gaussian wake are a function of ambient turbulence intensity and turbine operation. Overlapping wakes are combined using a sum-of-squares approach that has been used previously in literature (Katić et al.). It is important to note that there are alternative methods to combine wakes as wake superposition is an ongoing research topic (Machefaux and Mann (2015), Trabucchi et al. (2017)).

Wake deflection is also included in this model based on the yaw misalignment of a turbine. It is modeled using a budget analysis of the Reynolds Averaged Navier-Stokes equations. For further details, the reader is referred to (Bastankhah and Porté-Agel (2016))

Second, the Simulator fOr Wind Farm Applications (SOWFA), is a high-fidelity framework used to perform large-eddy simulations (LES) of wind farm flows, developed by NREL (Churchfield et al. (2012)). In LES, the filtered Navier-Stokes equations are solved numerically, providing a time-evolving three-dimensional flow field in the wind farm. Within SOWFA, wind turbines are modeled using an actuator disk/line model with torque, blade pitch, and yaw controllers. SOWFA is based on the OpenFoam libraries, and has been used in past research of wind farm controls for design and analysis ~~-Churchfield et al. (2012)~~ (Churchfield et al. (2012))

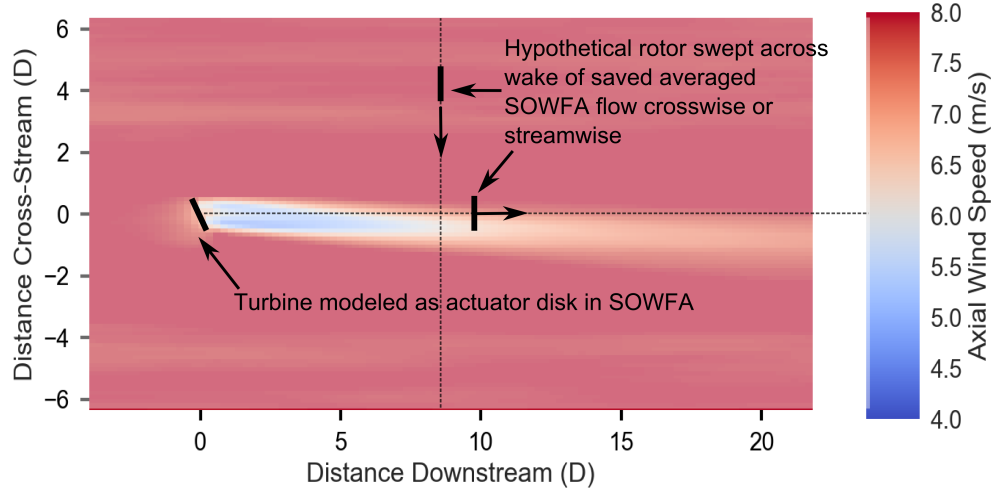
## 3 Method

In past research, the ~~two models~~ SOWFA and FLORIS have been used together. In a typical workflow, SOWFA simulations of a small farm are run to provide tuning inputs to FLORIS, which is then used to predict optimal controllers that are then

tested in SOWFA. Successful iterations of this process yield controllers that can be used in field testing [\(see for example Gebraad et al. \(2016\); Fleming et al. \(2017b\)\)](#)

One constraint of this approach is that, given the computational requirements of running SOWFA, tuning cases are typically limited to approximately 10-20 runs, and these are focused on high-loss scenarios such as one turbine directly waking another.

- 5 For example, simulations of two turbines aligned in the flow, with and without yaw, for different distances downstream are a typical focus.



**Figure 1.** Diagram of the method used in the paper. In this example, [showing the flow as viewed from above](#), a single turbine is included in a SOWFA simulation. A period of 1600 seconds of the flow is averaged and then the hypothetical turbine rotor is scanned across this averaged flow to compute the power that would have been produced by a turbine at a given location.

- ~~In this approach, the SOWFA simulation includes~~ [An example of the approach used in this paper is now described. In one scenario, a SOWFA simulation including one turbine modeled as an actuator disk with rotation is simulated](#) (see Fig 1.) [Fig 1 illustrates a turbine in positive yaw in the convention used of positive being a counter-clockwise rotation when viewed from above.](#)
- 10 The simulation is run for 2,000 seconds, and the flow is averaged over the last 1600 seconds to allow for transients to dissipate. [The averaged flow is provided directly via OpenFOAM output functions.](#) From the averaged flow, a power is computed, which would have been produced by an additional hypothetical [turbine](#) at some point downstream. This [way, rather than results from a handful of turbine positions, a continuum of turbine locations can be considered.](#) This approach was adapted from power calculations used in Vollmer et al. (2016) This power is computed by averaging the cubed wind speed over
  - 15 a hypothetical rotor disk from the averaged flow. The cubed average is then converted to power through

$$P = 0.5\rho AC_p U^3 \quad (1)$$



where  $\rho$  is the density,  $A$  is the rotor area,  $C_p$  is the coefficient of power (which is derived from a look-up table based on wind speed precomputed from the aero-elastic turbine simulator FAST [Jonkman and Buhl Jr.](#)), and  $U$  is the rotor averaged wind speed. The hypothetical turbine can be swept across the area behind the turbine in the averaged flow to compute the effect on power for turbines across a wide range of locations. This method allows for inspection of change in power for a wide variety of turbine array configurations. For comparison, this process can be repeated directly in FLORIS to compute the power of a downstream turbine for a range of locations.

One advantage of using this method to compare wake predictions between models is that it focuses on the comparison on the quantity of interest, which is the power production of turbines at a given location. Rather than trying to identify a wake center, focus is shifted from how far the centroid of deficit is shifted, to how much expected power production is possible at a given location. This will be important, if for example, focus shifts from wake deflection to energy entrainment.

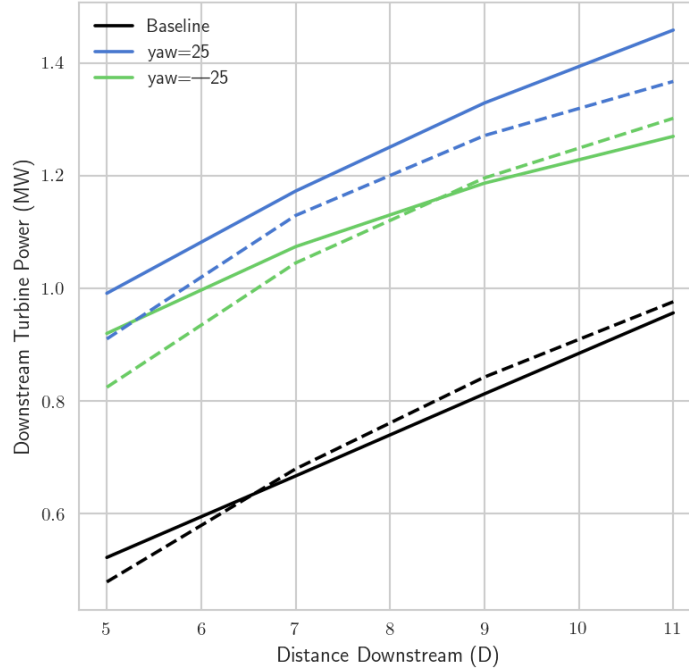
All simulations in this paper are of a neutral atmospheric boundary layer, with a mean-wind speed [at hub height](#) of 8 m/s, similar to what has been used in past studies (Fleming et al. (2015)). This simulation had 6% turbulence intensity with a shear exponent of 0.085. The domain size is 5 km x 1.8 km x 1 km. The simulations include National Renewable Energy Laboratory's (NREL's) 5-MW reference turbines from Jonkman et al. (2009), modeled as an actuator disk for computational efficiency. In our previous work, this method the actuator disk model with rotation has shown to be comparable to an actuator line model in predicting power ~~-(c.f. Porté-Agel et al. (2011); Martínez-Tossas et al. (2015))~~

### 3 ~~One-turbine~~ One-turbine case

The one turbine case shown in Fig. 1 is the first case to be analyzed where a single NREL 5-MW turbine is placed in the flow. In one case, it is has no yaw offset (denoted as "baseline"), and then +/- 25° of yaw. In the first case, the hypothetical turbine is swept downstream ~~(x is downstream, y cross-stream)~~ with no lateral offset. The results are shown in Fig. 2.

In both SOWFA and FLORIS, power is improved by misaligning the upstream turbine. In addition, more power is generated in the positive (CCW) yawed case than in the negative (CW) yawed case (see Fig. 2.) This asymmetry of wake steering, which has been documented previously, is an important result. For example, in [Fleming et al. \(2015\)](#), the simulation study in Fleming et al. (2015), where two 5MW turbines are aligned directly in the flow, after deducting the power lost because of yaw on the first turbine, only positive yaw produces an overall gain in power for a case of two turbines separated by 7 diameters (note this wouldn't be true for example in certain partial overlap cases, but it demonstrates the important of this asymmetry in wake steering).

In the original FLORIS model (Gebraad et al. (2016),) this asymmetry is captured by assuming that a wake has a certain natural deflection, even when operating in non-yawed conditions. This offset was previously used to describe the asymmetry between positive and negative wake-steering angles. ~~However~~ Conventionally, this natural ~~deflection in non-yawed conditions is not observed in simulations without the Coriolis effect or where the Coriolis effect is smaller, (i. e. simulations close to the equator.)~~ offset angle was 0.13°. This paper further reconsiders the source of this asymmetric behavior of the wake and its impact on the wind farm control strategy.



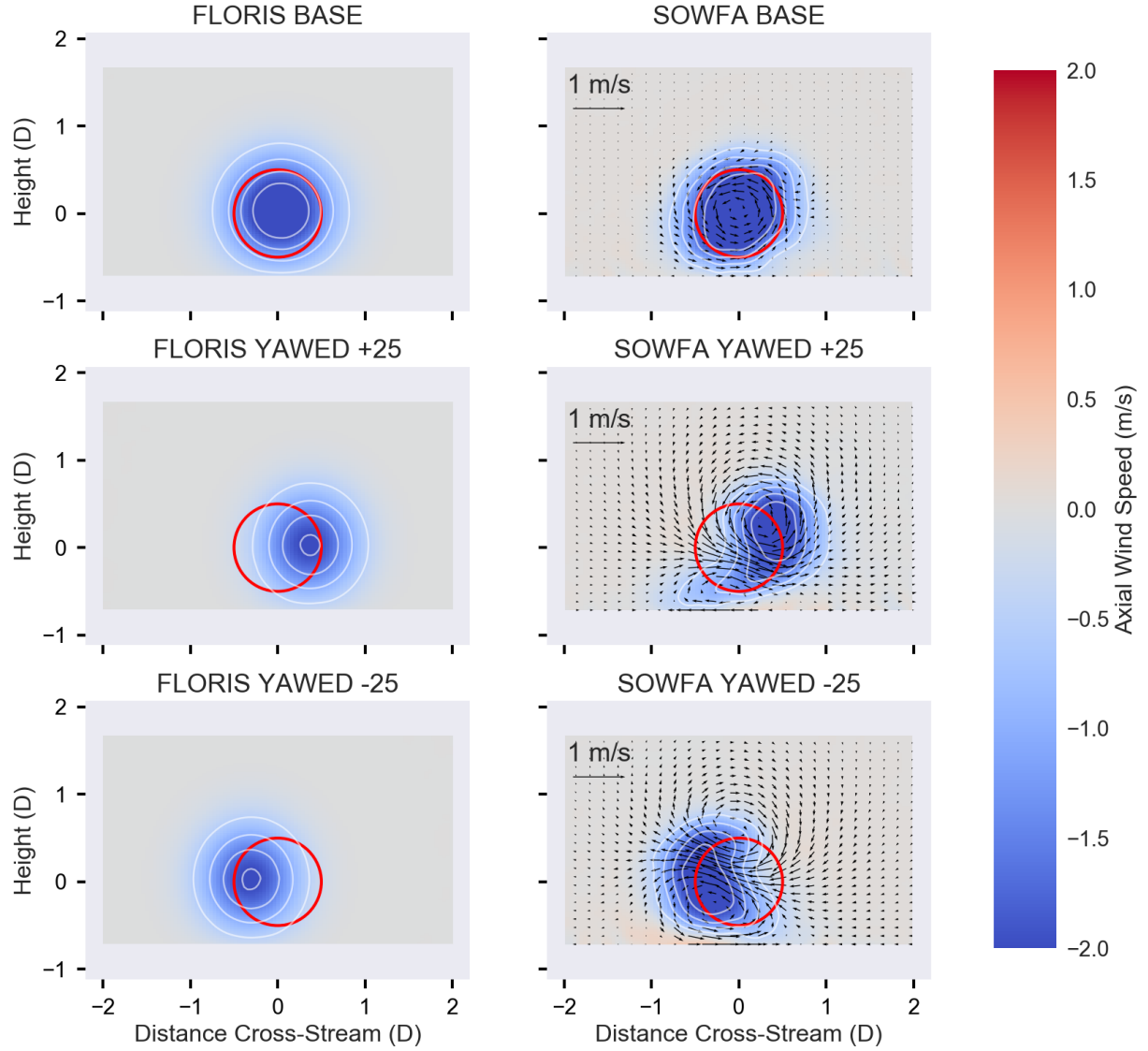
**Figure 2.** Power output in SOWFA (solid) and FLORIS (dashed) for a hypothetical turbine directly downstream of a baseline, or yawed turbine at different distances.

One way we can investigate the impact of the generated vortices on the wake is to look at cut-through slices of the flow at a distance downstream of the turbine. This is shown in Fig. 3 and Fig. ???. These cut-through slices are cut cross-wise through the flow direction, and include the average value of all velocity components. In these plots, the time-averaged flow with no turbines is first subtracted and so only the change from the background is plotted. These cut-throughs are plotted for both FLORIS and SOWFA.

Cut-through as in Fig. 3 but for a yaw of  $-25^\circ$

Comparing the figures Comparing the plots in the figure, we can note that FLORIS shows the impact of positive yaw as primarily impacting the location of the wake and the depth of the deficit. SOWFA, however, includes a large impact on wake shape, which is caused by the two counter-rotating vortices seen in Fig. 3 and Fig. ??. This is in line with the analysis of Vollmer et al. (2016); Howland et al. (2016); Fleming et al. (2017a). Visual inspection indicates some discrepancies between SOWFA and FLORIS.

Power output of hypothetical downstream turbine for various downstream distances and lateral offsets (left). Solid lines are SOWFA results, and dashed are from FLORIS, showing good agreement in the depth of deficits and location of maximum



**Figure 3.** Cut-through of SOWFA flow ([viewed from upstream](#)), minus the background flow, at a distance of 7 diameters behind the turbine for baseline and yawed  $25^\circ$  and  $-25^\circ$ . Deficit in axial flow is shown in blue, saturating at a deficit of 2 m/s to broadly show the wake area. For the SOWFA cases, the in-plane flow is visualized by arrows whose relative size indicates the strength of the flow. Red circles indicate a rotor located directly downstream of the turbine.

deficit. On the right, the percent gain (of the total power of the actual and hypothetical turbine) is shown relative to the baseline of the two yaw angles.

As a first qualitative observation of the baseline cases, there does not appear to be any natural deflection (this will be further examined later). The natural deflection angle appears to be absent in this case and similar cases where the amount of veer in the simulation is kept to a minimum. Second, observing the in-plane flow, shown by arrows in the SOWFA plots (~~bottom row~~ in Fig. 3 and Fig. ??), the asymmetry in wake behavior likely comes from the interaction of the counter-rotating vortices with the ~~rotation caused by the rotation of the turbine rotor wake~~ (as seen in the SOWFA baseline case of Fig. 3) and the wind shear. More specifically, in the positive yaw case, the top vortex rotates ~~in the same direction as the underlying wake constructively with the deflection of the wake and rotation of the wake~~ (generated by the rotation of the turbine), ~~making the top vortex stronger~~. In the negative yaw case, the lower vortex interacts ~~with the vortex generated by the more~~ substantially with the rotation of the ~~turbine wake~~. The top vortex is also stronger because the wind speed is stronger at the top of the rotor as compared to the bottom of the rotor due to the shear layer and the interaction with the ground. This difference in vortex interaction may explain the asymmetry in the wake based on yaw misalignment. A third observation is that, in the positive yaw case (Fig. 3), the left side of the wake has been moved further to the right than FLORIS estimates, which computes deflection based on the center alone.

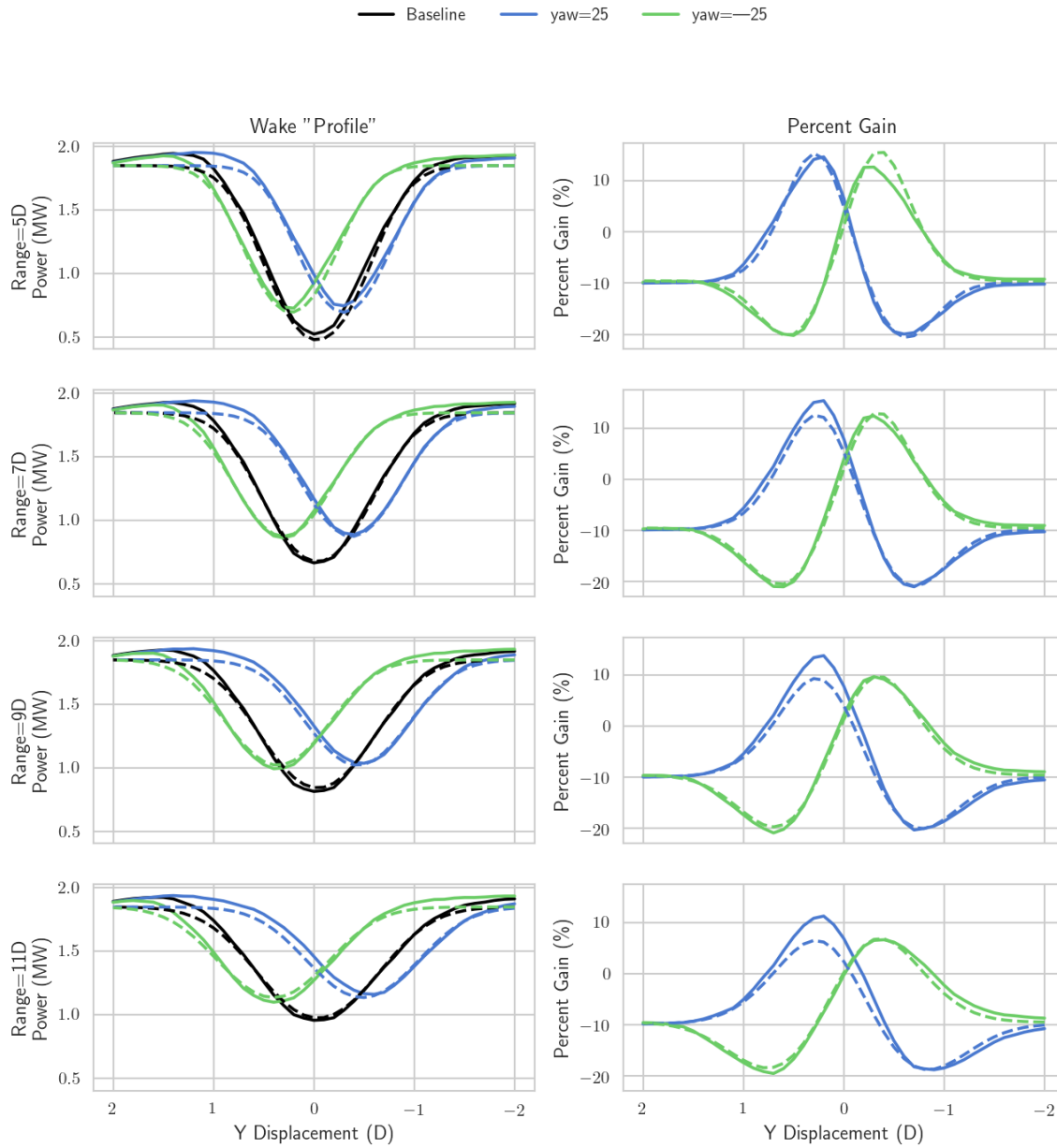
Figure 4 shows the power of the hypothetical turbine that is swept laterally across the wake at different distances downstream. The left column of figures show the wake “profile” (measured in MW), and we see very good agreement between SOWFA and FLORIS. Note that the largest impact in gain in power (right column) is offset from turbine directly downstream. This percent gain includes the loss of the upstream turbine.

~~Under positively-~~  
Under positively offset yawed conditions, the power improvements for turbines negatively offset from the wake center line are greater than what FLORIS estimates for distances greater ~~than 5 D~~ of 7 D and more.

We note here that this effect cannot be modeled through a re-tuning of FLORIS. The main parameter available for implementing deflection asymmetry is a natural deflection angle, ~~and increasing this raises the~~. However, observing the “profile” of the baseline SOWFA case, it is not deflected, it is centered about zero. Increasing the natural deflection angle in FLORIS would raise the error observed in the baseline ~~and (as well as the~~ negatively yawed case.)

Further, we cannot simply assume the wake recovers more quickly in positively yawed cases, because we note that in all cases, the trough of the deficit is predicted accurately by FLORIS. Therefore, the shape of the wake is a factor in being able to more accurately predict the power gain due to yaw misalignment, especially in cases of turbines offset from exactly downstream.

A first result of the paper is the suggestion that the asymmetry in wake steering, where positive yaw is superior to negative yaw, is better explained by vortex-wake interactions than a natural deflection angle. This is ~~most~~ more important for a two-turbine interaction when the downstream turbine is not directly downstream.

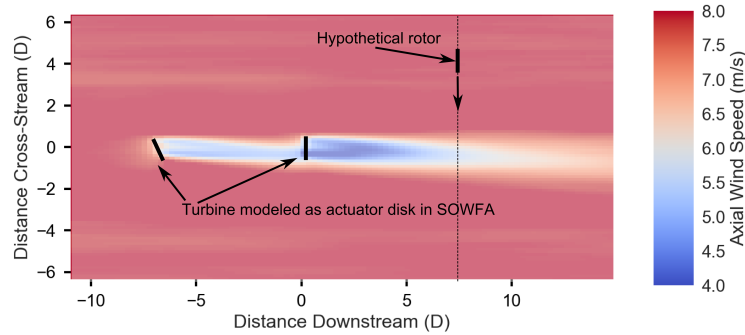


**Figure 4.** Power output of hypothetical downstream turbine for various downstream distances and lateral offsets (left). Solid lines are SOWFA results, and dashed are from FLORIS. On the right, the percent gain (of the total power of the actual and hypothetical turbine) is shown relative to the baseline of the two yaw angles.

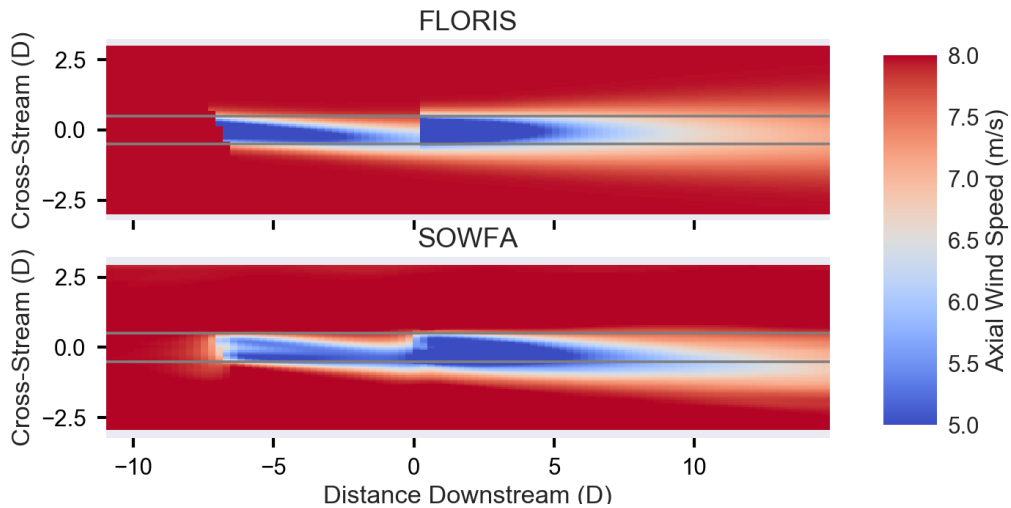
#### 4 ~~Three-turbine arrays~~Two-turbine case

The impact of the counter-rotating vortices becomes even more clear when the simulation includes multiple turbines. In a second simulation, a case is considered where two turbines are in the flow 7 diameters (D) apart. The first turbine is either operating with no yaw misalignment or operating with  $25^\circ$  yaw misalignment while the second turbine is always aligned. The

5 layout is shown in Fig. 5



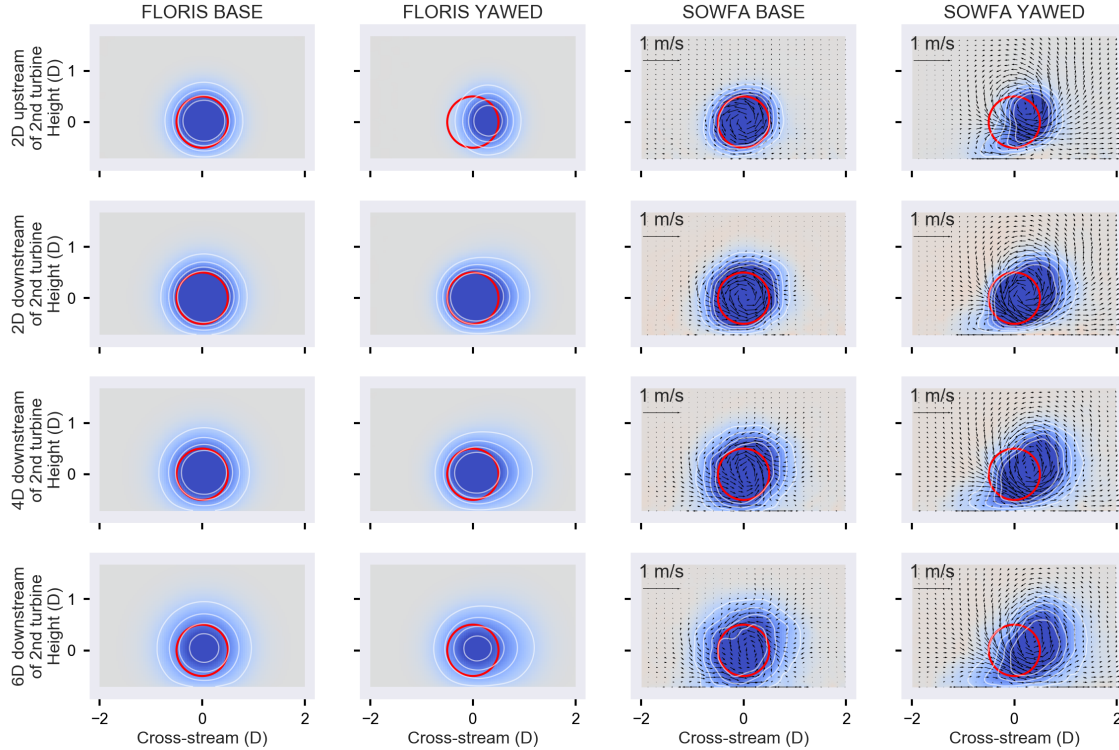
**Figure 5.** Layout of SOWFA simulation as in Fig. 1, now with two turbines. Note that only the first turbine is yawed in controlled cases.



**Figure 6.** Horizontal cut-through of two-turbine flow in FLORIS and SOWFA. Gray lines pass through edges of rotor to help distinguish flow location relative to rotor.

Horizontal cut-throughs of the flow at hub height in SOWFA and FLORIS are compared in Fig. 6. The most striking observation is that in the SOWFA case, the second ~~wake is impacted by the counter-rotating vortices generated by the first~~

turbine's wake appears to be deflected, even though that turbine is aligned to the flow. In other words, the second wake appears to also be steered. We will refer to this phenomena as “secondary steering”. This is not predicted by FLORIS. If we observe a cut-through at 7 diameters downstream of the second turbine, we see that there is a deflection of the wake of the second non-yawed turbine, see Fig. 7.

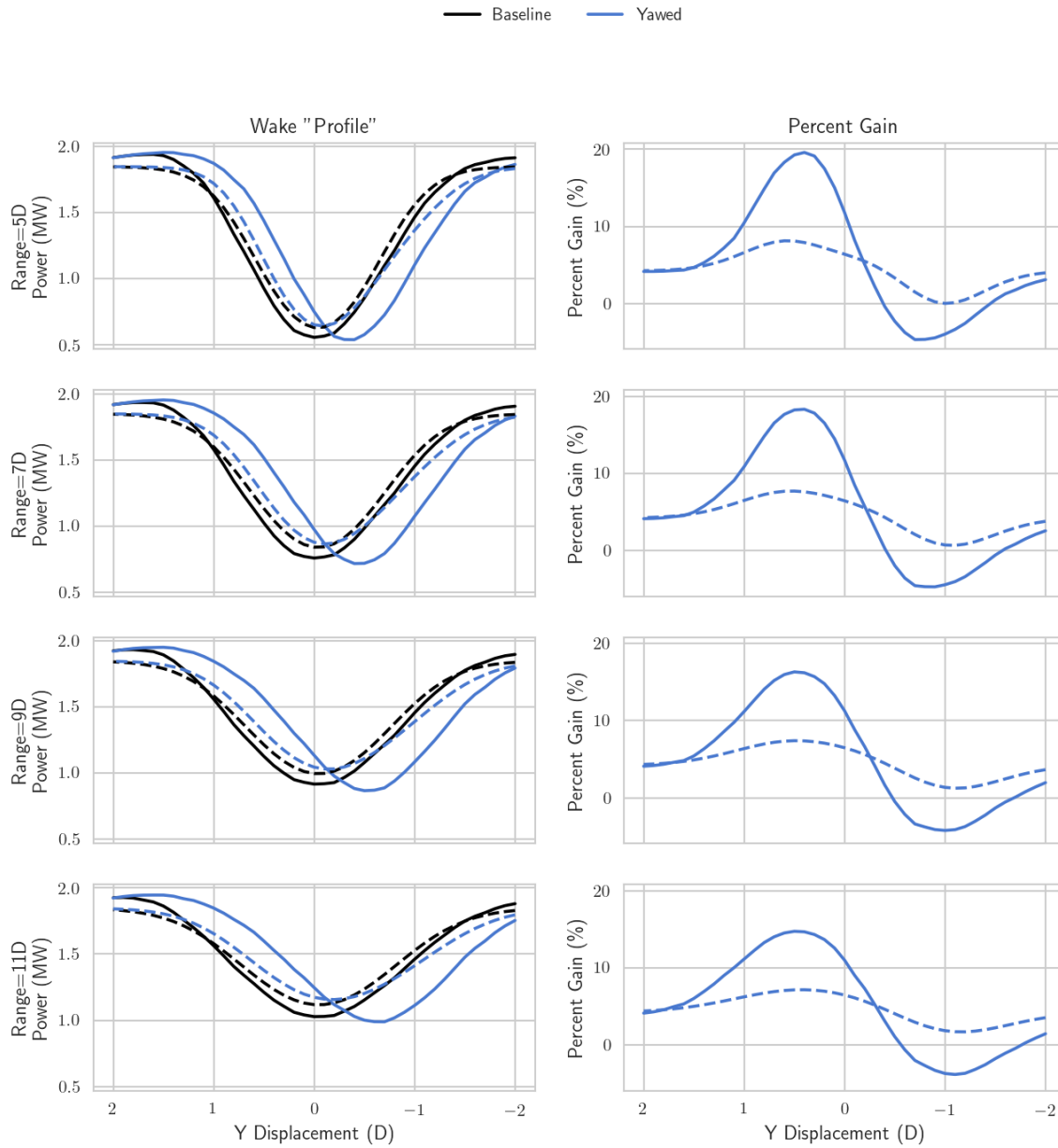


**Figure 7.** Cut-through visualizations of FLORIS and SOWFA 2D in front of second turbine (top row) and behind the second turbine (remaining rows).

- 5 Combining observations from Fig. 6 and Fig. 7, we observe that FLORIS expects the wake of the second turbine to be impacted by the first wake primarily through reduced inflow velocity and increased turbulence. Both of these effects do not lead to the deflection of the second wake. In this case, the second wake is significantly deflected in SOWFA. This deflection appears to be explained as a combination of the rotating wake of the second turbine, with the top vortex generated by the first yawed turbine. Considering the impact on power of a hypothetical third turbine defined 7 diameters downstream of the
- 10 second, the difference between FLORIS and SOWFA is substantial. As seen in Fig. 8, FLORIS expects a maximum gain for

the three-turbine total of approximately 7%, where SOWFA predicts a total power gain of 17%. Also, SOWFA finds some locations where the 3-turbine array loses power, while FLORIS does not.





**Figure 8.** Power of a hypothetical turbine behind the 2nd turbine in SOWFA (solid) and FLORIS (dashed) (left) and percent increase relative to baseline (right). FLORIS has good agreement in the baseline case but misses the change in wake behavior obtained in the yawed case in SOWFA.

## 5 Discussion of secondary steering

In the previous section, the concept of “secondary steering” is introduced, wherein, a steered wake, causes a deflection of the wake of a downstream turbine, this is not yawed. This has important implications for wind farm controller design, and it is critical to understand the driving mechanisms.

- 5 In this section, we consider an alternative explanation for the observed phenomena and discrepancy with the FLORIS engineering model. In the previous section, the vortices generated by wake steering are suggested as the cause of the “secondary steering” phenomena, because they can be seen in flow analysis to generate persistent cross-flows that continue after the combination of wake with the second turbine.

However, a possible alternative explanation is that the first deflected wake, is producing a partial wake scenario, and the combination of wakes, especially partial wakes, is complex and the subject of current research.

FLORIS’ wake combinations model, as described earlier, is based on sum of squares. Given that Trabucchi et al. (2017) shows that sum-of-squares superposition, as is used in FLORIS, has an error in prediction relative to newer methods, this could be the explanation for the discrepancy, ie, partial wake overlap leads to an apparent secondary steering and improved wake combination models in FLORIS would resolve the discrepancy.

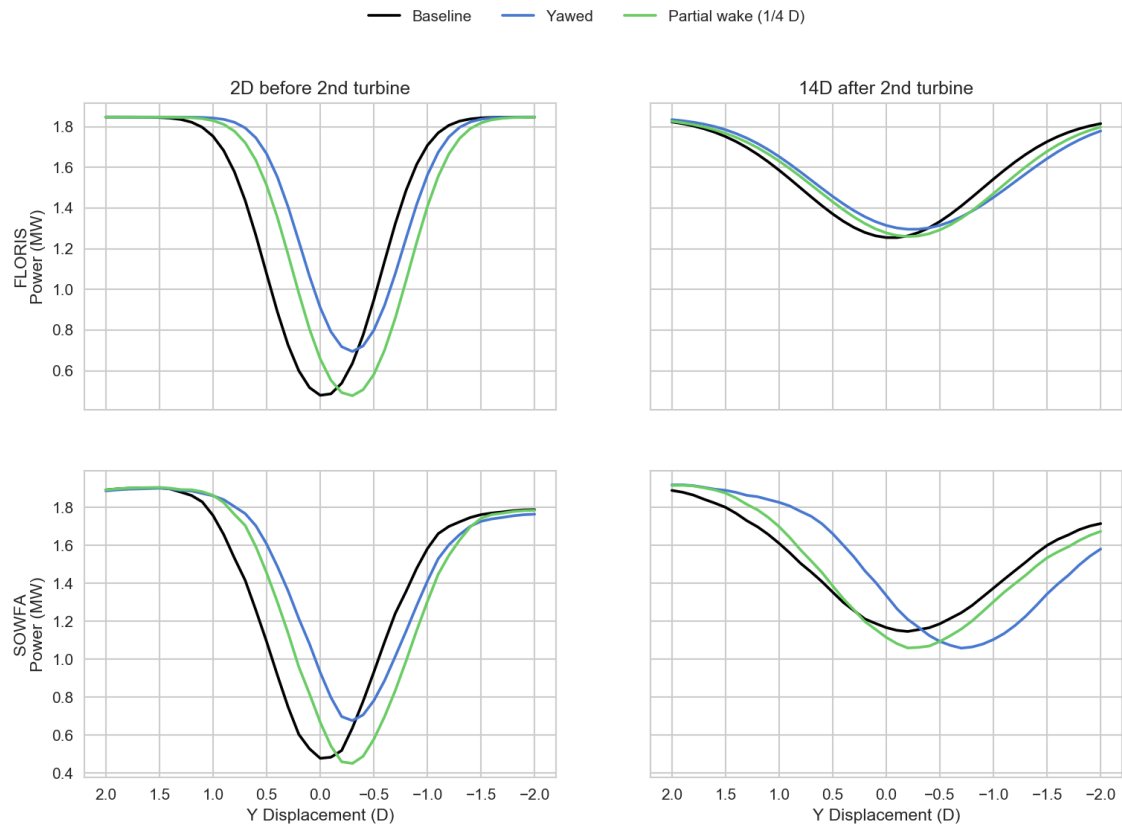
- 15 To test this, a new SOWFA simulation is run, similar to the two-turbine cases described in the previous section and shown in Fig. 6. However, in this case, the front turbine is moved down  $1/4 D$ , such that the wake of the upstream turbine overlaps the downstream turbine in a similar location as the steered wake, but without the generated vortices.

Fig. 9 shows the results of this new comparison. On the left column, the wake “profile”  $2 D$  upstream of the downstream turbine is shown in both FLORIS and SOWFA. The “partial” wake case shows a deficit in a similar location to the yawed case.

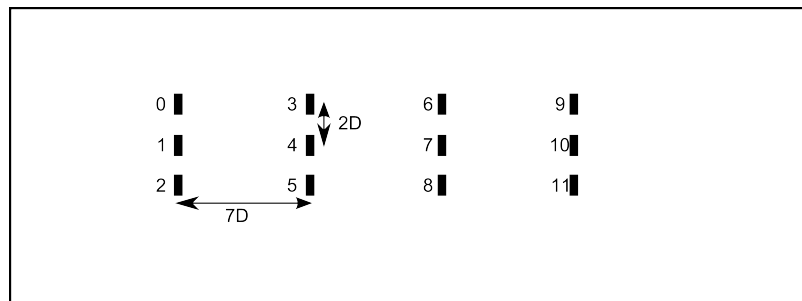
- 20 In the right column are the “profiles” from FLORIS and SOWFA  $14 D$  after the downstream turbine. In the upper FLORIS figure, you can that FLORIS assumes that both yawing and translating the front turbines will cause the power deficit far downstream to be both shifted a little bit, and in a similar way. However, SOWFA shows that while the FLORIS prediction of the combined partial wake is not as accurate as it’s prediction of the incoming single wake (as could be expected from Trabucchi et al. (2017)), the substantial change in the yawed case is much more different than FLORIS’s prediction. Note for
- 25 example the minimum of the “profile” of the yawed wake far downstream is further deflected than the incoming steered wake. This is the “secondary steering” and probably can’t be modeled as combination of partial overlap only, as in that case the minimum should appear in between the minimum of the two wakes to be combined.

## 6 ~~Wind turbine array results~~ Multiple-turbine case

- Building on the results from the three-turbine case, ~~A~~ a final case simulates a tightly spaced wind farm ~~and~~ is used to further
- 30 explore the importance of these counter-rotating vortices generated under yawed conditions. A 12-turbine wind farm, shown in Fig. 10, is modeled in both SOWFA and FLORIS. The case uses the same inflow, as well as runtime (2000 s) and averaging time (1600 s) of all previous cases.



**Figure 9.** Power of a hypothetical turbine in Baseline, Yawed (+25°), and partial wake. The left column shows the power profile 2D before the 2nd turbine, while the second column is 14D behind.



**Figure 10.** Layout and numbering of turbines in a turbine array case for both SOWFA and FLORIS.

This layout affords the opportunity to assess how the consideration of vortices impacts previous assumptions of wake steering. If wake steering only deflects wakes to the right or the left of a downstream turbine, then it is possible to incidentally steer a wake into a different turbine operating nearby. This description suggests that wake steering will be difficult in situations where a turbine's wake cannot be directed easily into empty space.

5 However, noting that vortices and wakes combine in a profitable manner when wakes interacted going downstream, we can ~~observe~~-speculate that vortices can provide a constructive mechanism for wakes located near to each other laterally as well.

Additionally, in FLORIS as currently modeled, it is expected that although the three horizontal rows of turbines are tightly spaced, the effect of simultaneously applying wake steering to turbines 0, 1, and 2, would be equivalent to the super-position of applying wake steering to each row individually. However, in SOWFA, the generation of these large-scale structures, i.e.  
10 counter-rotating vortices, influence each other and can combine in ways that are not captured in the current engineering model.

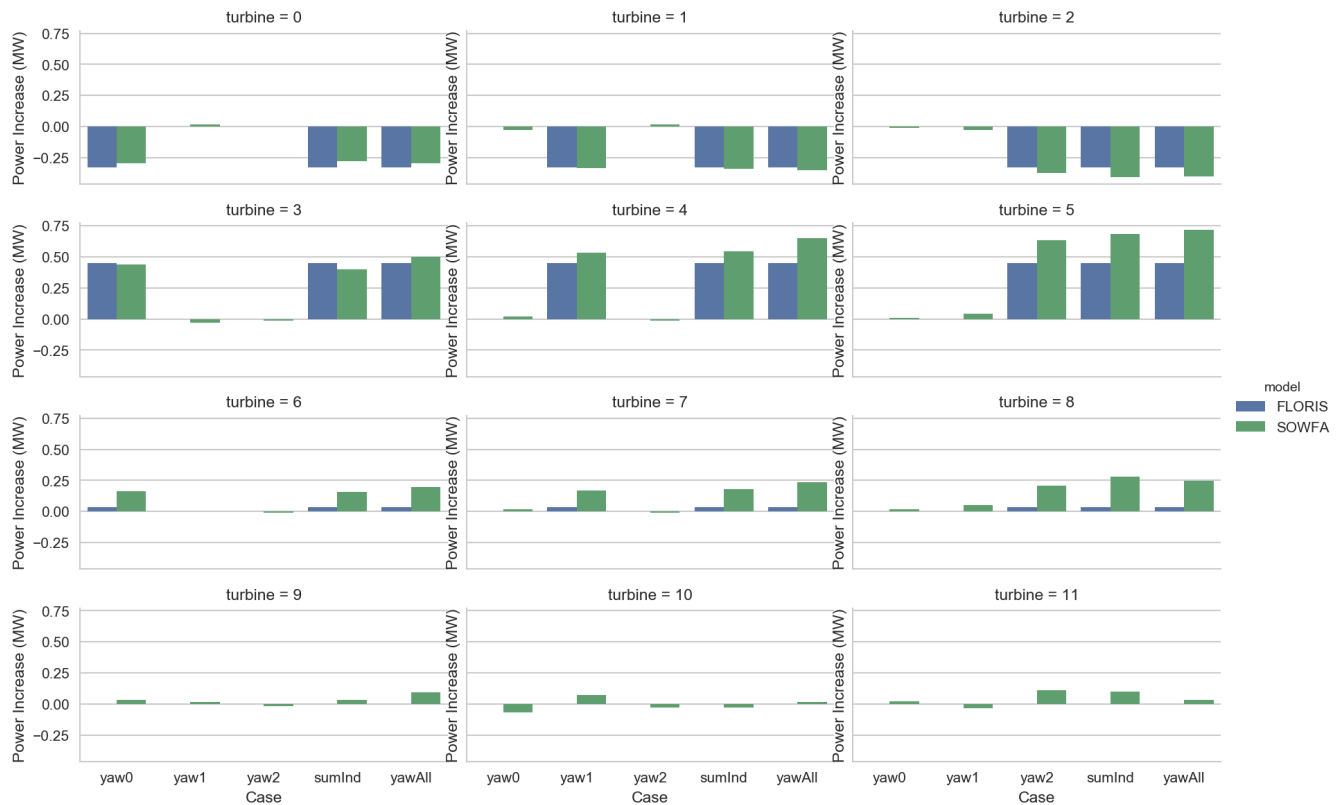
We ran five simulations of the scenario in Fig. 10, one in which all turbines operate aligned ("baseline"), ~~there~~-three where only one of the upstream turbines is yawed ("yaw0," "yaw1," and "yaw2"), and a final where all three are yawed ("yawAll"). Then in the analysis, we can compare the results of summing the effects of individually yawed turbines from separate simulations ("sumInd") in post-processing to the case of simultaneously yawing all turbines within the simulation  
15 ("yawAll").

Fig. 11 shows the change in power from baseline, for each turbine, for SOWFA and FLORIS. We note that the power predicted for the baseline case is 13.05 MW for FLORIS, and 13.107 MW for SOWFA, which indicates good agreement.

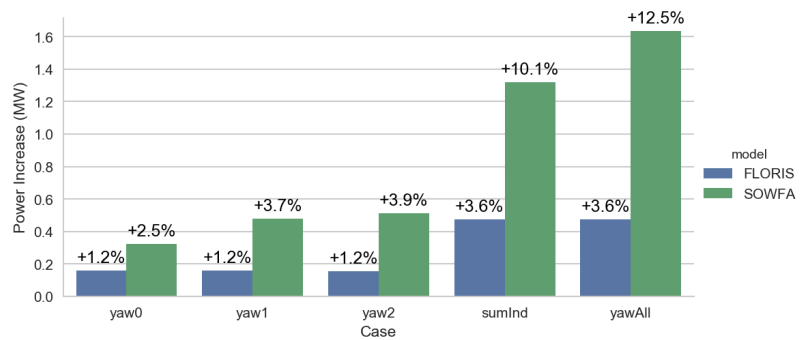
For the first row, which is the upstream turbines implementing the yaw misalignment, the losses between SOWFA and FLORIS are similar, and small differences between individual and simultaneous yawing is observed. However, in the second  
20 row, while FLORIS continues to show no difference between individually and simultaneously yawed conditions, SOWFA shows a consistent gain when yawing is simultaneously applied versus summing of individual yaw misalignment effect ("yawInd".)

In the third row, as indicated in the earlier three-turbine analysis, FLORIS sees no impact on turbine power, whereas SOWFA observes an increase, and a difference between individual and simultaneous yawing. This continues to a lesser extent in the  
25 fourth row, now a full 21 diameters behind the yawed turbines.

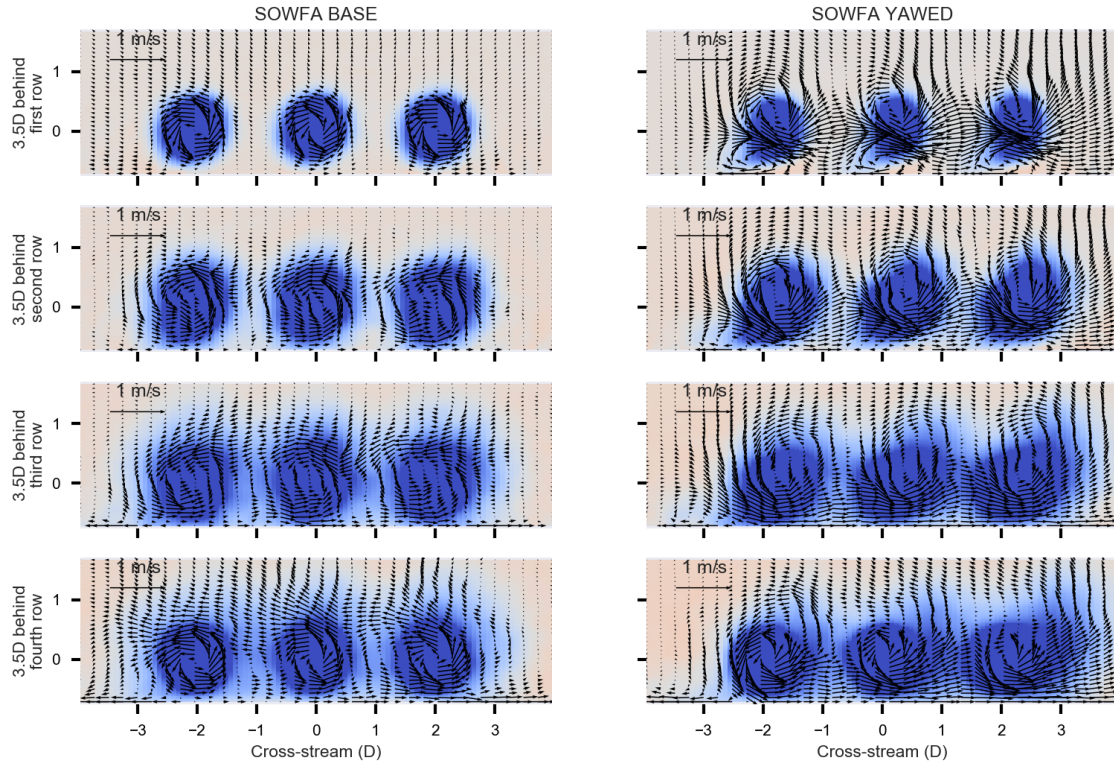
The summed turbine power is shown in Fig. 12. Again, FLORIS underestimates the power increase from the later rows, and assumes that individually applied yaw offsets can be summed to the whole, while SOWFA shows an increase from simultaneous application. Fig. 13 shows cut-throughs following each of the rows in the "yawAll" simulation. Most notably, it appears that the counter-rotating vortices that are generated from the three upstream turbines are combining to have a larger impact on  
30 the downstream turbines. Just by operating the upstream turbines under misaligned conditions, these large-scale structures are generated and propagate throughout the farm.



**Figure 11.** Change in turbine power relative to baseline for each turbine across the various scenarios in both SOWFA and FLORIS.



**Figure 12.** Change in total power for SOWFA and FLORIS across the cases.



**Figure 13.** Cut-through visualizations of SOWFA following each row in the turbine array scenario “yawAll”.

## 7 Conclusions

In this paper, the role of flow structures, particularly ~~this~~ a pair of counter-rotating vortices, generated in wind farm control through yaw misalignment was investigated. These vortices were shown to be important in (1) deforming the shape of ~~wake~~, the wake, (2) in explaining the asymmetry of efficacy in wake steering of oppositely signed yaw angles (rather than the currently used natural deflection angle), and (3) in understanding how a “steered” wake interacts with a downstream wake and with laterally adjacent wakes.

~~A first result of the paper is a motivation to develop new physics for a control-oriented model of~~ These findings are critical for developing an effective, robust strategy for wind farm control, ~~which includes the effects of these counter-rotating vortices. This is in fact a focus of ongoing efforts at NREL. Such a new model should improve predicting the SOWFA cases presented in this paper. More importantly, it is clear that wind farm control strategies based on such models would pursue different, and perhaps more effective, wind farm control strategies than are currently designed.~~

~~A second result is the suggestion that wind farm control and wake steering should be thought of, not as a geometrical redirection of wakes but, as the generation of large-scale flow structures that will aid in.~~

One important finding of the paper was that, because of the presence of these vortices, a steered wake can deflect the wake of downstream turbine, even if that turbine is not yawed, a process called “secondary steering”. A second finding was that combinations of wakes from yawed turbines are shown to involve merging of generated cross flows. These combinations can lead to changes in power generation that are different then adding the changes of yawing individual turbines.

In ongoing research at NREL, new engineering wake models which contain these behaviors due to the improved performance of wind farms. In other words, emphasis should shift from controlling the wakes, which are only deficits, to controlling the entire flow. In flow control, positive effects such as entrainment of new flow and creation of large-scale flow structures can be modeled and affected in addition to wake properties. generated vortices are under development to be incorporated into FLORIS. Once completed these new models will be compared to similar SOWFA data sets to determine if they can resolve all discrepancies. Such new models, can then be used to develop new wind farm controllers. These new wind farm controllers can be optimized to take advantage of the controllability afforded by the vortices ability to manipulate the flow and will yield a more powerful form of wake steering than currently exists.

~~Future work should strive to better model these structures in control-oriented models, and to design controllers that seek to use these models to maximize the impact of control using minimal effort.~~

*Acknowledgements.* The U.S. Government retains and the publisher, by accepting the article for publication, acknowledges that the U.S. Government retains a nonexclusive, paid-up, irrevocable, worldwide license to publish or reproduce the published form of this work, or allow others to do so, for U.S. Government purposes.

## References

- Annoni, J., Gebraad, P. M., Scholbrock, A. K., Fleming, P. A., and Wingerden, J.-W. v.: Analysis of axial-induction-based wind plant control using an engineering and a high-order wind plant model, *Wind Energy*, 19, 1135–1150, 2016.
- Annoni, J., Fleming, P., Scholbrock, A., Roadman, J., Dana, S., Adcock, C., Porte-Agel, F., Haizmann, F., and Schlipf, D.: Analysis of Control-Oriented Wake Modeling Tools Using Lidar Field Results, *Wind Energy Science* (Under Review), 2018.
- Bartl, J. and Sætran, L.: Experimental testing of wind turbine wake control, in: *International Conference on Future Technologies for Wind Energy*, 2017.
- Bastankhah, M. and Porté-Agel, F.: A new analytical model for wind-turbine wakes, *Renewable Energy*, 70, 116–123, 2014.
- Bastankhah, M. and Porté-Agel, F.: Experimental and theoretical study of wind turbine wakes in yawed conditions, *Journal of Fluid Mechanics*, 806, 506–541, 2016.
- Churchfield, M., Lee, S., Moriarty, P., Martinez, L., Leonardi, S., Vijayakumar, G., and Brasseur, J.: A large-eddy simulation of wind-plant aerodynamics, in: *50th AIAA Aerospace Sciences Meeting Including the New Horizons Forum and Aerospace Exposition*, Nashville, TN, 2012.
- Dahlberg, J. and Medici, D.: Potential improvement of wind turbine array efficiency by active wake control (AWC), in: *Proc European Wind Energy Conference*, 2003.
- Fleming, P., Gebraad, P. M., Lee, S., Wingerden, J.-W., Johnson, K., Churchfield, M., Michalakes, J., Spalart, P., and Moriarty, P.: Simulation comparison of wake mitigation control strategies for a two-turbine case, *Wind Energy*, 18, 2135–2143, 2015.
- Fleming, P., Annoni, J., Scholbrock, A., Quon, E., Dana, S., Schreck, S., Raach, S., Haizmann, F., and Schlipf, D.: Full-Scale Field Test of Wake Steering, in: *Wake Conference*, Visby, Sweden, 2017a.
- Fleming, P., Annoni, J., Shah, J. J., Wang, L., Ananthan, S., Zhang, Z., Hutchings, K., Wang, P., Chen, W., and Chen, L.: Field test of wake steering at an offshore wind farm, *Wind Energy Science*, 2, 229, 2017b.
- Gebraad, P., Teeuwisse, F., Wingerden, J., Fleming, P. A., Ruben, S., Marden, J., and Pao, L.: Wind plant power optimization through yaw control using a parametric model for wake effects—a CFD simulation study, *Wind Energy*, 19, 95–114, 2016.
- Gebraad, P., Thomas, J. J., Ning, A., Fleming, P., and Dykes, K.: Maximization of the annual energy production of wind power plants by optimization of layout and yaw-based wake control, *Wind Energy*, 20, 97–107, 2017.
- Howland, M. F., Bossuyt, J., Martínez-Tossas, L. A., Meyers, J., and Meneveau, C.: Wake structure in actuator disk models of wind turbines in yaw under uniform inflow conditions, *Journal of Renewable and Sustainable Energy*, 8, 043 301, doi:10.1063/1.4955091, 2016.
- Jensen, N. O.: A note on wind generator interaction, *Tech. Rep. Risø-M-2411*, Risø National Laboratory, 1984.
- Jiménez, Á., Crespo, A., and Migoya, E.: Application of a LES technique to characterize the wake deflection of a wind turbine in yaw, *Wind energy*, 13, 559–572, 2010.
- Jonkman, J. M. and Buhl Jr., M. L.: FAST Manual User’s Guide, NREL report No. NREL/EL-500-38230.
- Jonkman, J. M., Butterfield, S., Musial, W., and Scott, G.: Definition of a 5-MW reference wind turbine for offshore system development, *Tech. rep.*, NREL/TP-500-38060. Golden, CO: National Renewable Energy Laboratory, 2009.
- Katić, I., Højstrup, J., and Jensen, N. O.: A simple model for cluster efficiency, in: *EWEA Conference and Exhibition*, pp. 407–410.
- Machefaux, E. and Mann, J.: Multiple Turbine Wakes, *DTU Wind Energy*, 2015.
- Martínez-Tossas, L. A., Churchfield, M. J., and Leonardi, S.: Large eddy simulations of the flow past wind turbines: actuator line and disk modeling, *Wind Energy*, 18, 1047–1060, 2015.



- Medici, D. and Alfredsson, P.: Measurements on a wind turbine wake: 3D effects and bluff body vortex shedding, *Wind Energy*, 9, 219–236, 2006.
- Niayifar, A. and Porté-Agel, F.: A new analytical model for wind farm power prediction, in: *Journal of Physics: Conference Series*, vol. 625, p. 012039, IOP Publishing, 2015.
- 5 Porté-Agel, F., Wu, Y.-T., Lu, H., and Conzemius, R. J.: Large-eddy simulation of atmospheric boundary layer flow through wind turbines and wind farms, *Journal of Wind Engineering and Industrial Aerodynamics*, 99, 154 – 168, doi:<https://doi.org/10.1016/j.jweia.2011.01.011>, <http://www.sciencedirect.com/science/article/pii/S0167610511000134>, the Fifth International Symposium on Computational Wind Engineering, 2011.
- Schottler, J., Mühle, F., Bartl, J., Peinke, J., Adaramola, M. S., Sætran, L., and Hölling, M.: Comparative study on the wake deflection behind yawed wind turbine models, in: *Journal of Physics: Conference Series*, vol. 854, p. 012032, IOP Publishing, 2017.
- 10 Trabucchi, D., Vollmer, L., and Kühn, M.: 3-D shear-layer model for the simulation of multiple wind turbine wakes: description and first assessment, *Wind Energy Science*, 2, 569–586, doi:10.5194/wes-2-569-2017, <https://www.wind-energ-sci.net/2/569/2017/>, 2017.
- Vollmer, L., Steinfeld, G., Heinemann, D., and Kühn, M.: Estimating the wake deflection downstream of a wind turbine in different atmospheric stabilities: an LES study, *Wind Energy Science*, 1, 129–141, 2016.
- 15 Wagenaar, J., Machielse, L., and Schepers, J.: Controlling wind in ECN’s scaled wind farm, *Proc. Europe Premier Wind Energy Event*, pp. 685–694, 2012.