

Reponse Reviewer 1

The paper presents different ways of taking surface roughness and tree height into account when using WASP. I think it's an interesting paper and I recommend that it should be accepted.

We thank the reviewer for the comments and have made modifications accordingly (see below). The line numbers all refer to the track-changed manuscript where deletions are indicated in red and new text is indicated in blue.

Some detailed comments are given below.

- p. 2, line 20 Reads driven by lines of roughness change lines. Is this correct?

We corrected this to: *“Heterogeneity in roughness is modelled through a roughness change model, which consists of an internal boundary layer model that is driven by lines of roughness changes on a map. The speed-up effects due to changes in terrain height are taken into account by a flow-over-terrain model.”*

- p. 7, Table 3 What is the relation between Equivalent Roughness Length (m) and z_0 in Eq. 1?

The word “equivalent” was confusing here, because the roughness length in this table are simply assigned to the map before applying it in the model chain as described in lines 9–19 on page 11. We therefore changed “Equivalent” to “Prescribed”. Eq. 1 is not specifically used in WASP and to be more explicit we added a reference to the vertical profile equations (line 11).

- p. 3, line 3, typo It reads height was used, therefore, the displacement

We replaced “therefore” with “and”.

- p. 8, bottom, typo It reads testing the different as the

We corrected this sentence to: *“This makes the site ideal for testing the different maps, because the meteorological masts are impacted by both changes in tree height and forest edges.”*

- p. 9, line 15, typo It reads had their roughness was set to 0.1 m

We removed the word “was” in this sentence.

- p. 9, below eq. 2 It reads the forest height was used to calculate a zero-plane displacement height d . I don't understand. Why is the displacement height related to the tree height?

The displacement height is often related the vegetation height. This is a widely used assumption and for further details we refer to, for example, Garratt (1992).

Reponse Reviewer 2

The manuscript does an excellent job at tackling the issues of data availability in land use maps for the calculation of wind resources in forested areas. The scientific significance and quality of the manuscript are both very high; I believe some sentences should be rewritten to be made clearer, and there are some minor inaccuracies with the use of English. I therefore recommend that after some minor technical corrections that manuscript be accepted.

We thank the reviewer for the comments and have made modifications accordingly (see below). The line numbers all refer to the track-changed manuscript where deletions are indicated in red and new text is indicated in blue.

Some specific comments below.

- page 1, lines 10-13 (p1110-13): While not unclear, sentence a bit convoluted and difficult to follow. Please rewrite.

We rewrote this to: “The improvements when using the ORA maps were both due to the higher roughness length and the higher resolution.”

- p213: Please spell out WAsP and add website

Changed as suggested.

- p2113: substitute colon between references (Jackson (1981); Raupach (1994)) with 'and'. p2124: In a later study, Dellwik et al. (2006) demonstrated...

Changed as suggested.

- p311: add website for WindPRO

The website has been added and we reorganised the text, such that WindPRO is introduced earlier in the manuscript (lines p2117-19).

- p317: ..impact of adding d to terrain data on model predictions.

Changed as suggested.

- p3118: ...about forest characteristics...

Changed as suggested.

- p3119: During the last decade, ALS...

Changed as suggested.

- p3126: ...based on standard land-use...

Changed as suggested.

- p3130: ...how WAsP handled... ..the speed of WAsP calculation.

We used “the” here to be consistent with the meaning of the acronym (Program), but perhaps this was confusing. We removed “the” in front of WASP throughout the manuscript.

- p3134-35: replace ‘(Sec. 2)’ with ‘Section 2 (i.e. no brackets, spell out Section)’. Also spell out Section in Section 3.

This is done because of the journal requirements to formatting.

Sections: The headings of all sections, including introduction, results, discussions or summary must be numbered. Three levels of sectioning are allowed, e.g. 3, 3.1, and 3.1.1. The abbreviation “Sect.” should be used when it appears in running text and should be followed by a number unless it comes at the beginning of a sentence.

- p415-8: Sentence not unclear but long and convoluted. Please rewrite.

We rewrote and split this sentence in two lines.

- p4124: Section 5.

See our answer two comments back.

- p619:frequently

This has been corrected.

- p6115: Why Carroll et al., 2010 while in Table 2 it’s DiMiceli et al., (2011)?

The reference from DiMiceli points to the exact URL where the data can be downloaded, whereas the reference to Carroll specifically is about the way the data has been created.

- p617-16: Please add survey dates for the 4 land-use datasets.

These are already given in Table 2 in the column satellite coverage dates. We do not feel that there would be a benefit from adding the periods again in the text.

- p6117: WindPRO

Changed as suggested.

- p6118: Table 3 (i.e. capitalise ‘Table’)

Changed as suggested.

- p6-Table 2: Suggested new title: ‘Summary of the different land-use data sources used for creating the roughness maps’ Capitalise all letters in CORINE; perhaps also add that it’s European data. Capitalise all letters in MODIS.

The table caption has been changed and all data sets have been capitalised.

- p7-Table 3: Suggested new title: ‘Land use category and prescribed values of roughness length for each land-use dataset’ CORINE section. Last line: Broadleaved. What is complex cultivation under CORINE? Maybe add

simple explanation to table. GLOBCOVER section. What is 'pen' mixed broadleaved? Global Land Cover section. First line: substitute 'needleleaf' with 'needleleaved'

All these errors/suggestions have been applied.

- p8l16: Figure 1 shows the tree heights (right panel) and elevation (left panel) derived...

The references to the panels were added.

- p8l18: This makes the site ideal for testing the difference... Please also state what difference.

We changed this line to: "This makes the site ideal for testing the different maps, because the flow at meteorological masts is impacted by both changes in roughness and the geostrophic roughness (see Sect. 1)."

- p8-Figure 1: Please use same ticks in axes X and Y. Also please specify that the units for elevation and tree heights are in m.

The figure now has the same ticks on both axes and the units are given above the color bar.

- p9l15: ...and had their roughness set to 0.1m...

This was corrected.

- p9l16: m (i.e. not mm)

Changed to 0.0001 m.

- p9l24: 3.2.3 Changing map resolution

Changed as suggested.

- p9l25: To investigate the impact of map resolution...

Changed as suggested.

- p10l6: ...file for compatibility with WAsP...

The word "the" is needed here.

- p10l8: Maybe add example in brackets at end of sentence, e.g.: '(e.g. ORA20) ?

Changed as suggested.

- p10l12-13: I would enclose in brackets the sentence: 'ORA maps that use... with and additional 'D'.

We added a full-stop after the first part of the sentence.

- p10l17: ...described above needed to...

Changed as suggested.

- p10-Table 4. Suggested new title: Displacement height (m) determined from pixels. . .

Changed as suggested.

- p1117: as for reference in page 2, substitute colon between references (Troen and De Baas (1987); Troen and Petersen (1989)) with 'and'.

Changed as suggested. Actually we meant to refer to Troen (1990) so the first of the references above has been changed.

- p11110-11: 'This modelling chain is extensively described in Troen and Petersen (1989). Here we briefly summarise the steps:'

Changed as suggested.

- p11121: Please remove comma after roughness lengths

Changed as suggested.

- p11128: 'This is done by creating distance-weighted. . .

Changed as suggested.

- p1211: Please briefly mention what the nodes are and what they represent.

We rewrote this sentence to make it more clear that we are talking about items in an array. Also we have added a reference where the algorithm is described in more detail.

- p1214: as for references in page 2 and page 17, substitute colon between references (Sempreviva et al., (1990); Floors et al. (2011)) with 'and'.

Changed as suggested.

- p12120: '...six of the seven masts, but at mast 6. . .'

Changed as suggested.

- p12-eq.6: I take A is the scale parameter of the Weibull distribution. Please make that explicit in the eq. description.

Yes, the symbol A is already defined at p11126 and therefore it is not given here.

- p13112: Please spell out Section

This has been changed to "Sect.", see journal guidelines in the answer to comment number 10.

- p13117-18: Sentence not unclear but needs to be improved. Also please conjugate in plural those verbs with data as subject (e.g. data have, not data has)

We completely rewrote this sentence because it was indeed not clear what was meant. " These features can be seen more clearly in the histograms of the roughness lengths for each map (Fig. 3). For example, the roughness lengths of

the grid cells in the ORA maps are higher on average and are spread over more bins than the satellite-based maps."

- p13l23: Please spell out Section

See answer to comment 10.

- p13l24: too many brackets for Fig.4

This has been corrected.

- p13l26: is filtering the QC-filtering? Maybe worth specifying?

We added QC.

- p13l27: Please put "<0.2" in brackets, not between commas.

Changed as suggested.

- p13l28: please remove 'flagged'

Changed as suggested.

- p14-Figure2. Suggested new title: Roughness maps from land-use datasets, and from ORA at 100m and 500m resolutions, colored by roughness values. Open circles...

We changed this to: "Roughness maps from land-use datasets, and from ORA at 100 and 500 m resolutions, colored by ..."

- p15. Figure 4: please remove 'the' before WAsP.

Corrected.

- p17l12-13: Not unclear but should be made clearer.

We added an extra sentence to clarify the evaluation strategy and refer back to Sect. where it is described in more detail. "For each pair of observed histograms, the histogram at the source location was used to predict the wind distribution at the target location and compared to the observed histogram at target location (see Sect. 4)."

- p17-Figure6. Suggested new title:

a) Mean absolute error in wind speed (%) and b) power density...

Changed as suggested.

- p18l18: Please spell out Section

See comment 10.

- p18l29: 'This shows that resolution is important...'

Changed as suggested.

- p19l8: 'The displacement height...' p19l16: 'investigations of model behavior?'

This error has been corrected.

- p19-Figure 7. The title describes the graph as mean absolute error, while the Y axis on the graph reads 'Relative error'. Please correct accordingly.

We modified the caption (see new caption Fig. 7).

- p20-Figures 8 and 9: Please remove 'The' at the beginning of titles.

This has been changed throughout the manuscript.

p2115: '...into two types. Horizontal predictions ...'

Changed as suggested.

- p21116: remove space between 41 and %

This is done in accordance with the journal policy: Spaces must be included between number and unit (e.g. 1 %, 1 m).

- p22110: Should it be RMSE rather than just RMS?

No, because the error in this case is written as δU .

- p22117: '...different descriptions of land use.'

Changed as suggested.

- p23120-21: '...products with more detailed, but incorrect information (e.g. GLCC1000 vs GLOB300) when comparing only the commercially available maps.'

Corrected.

- p23123: 'As argued by Jackson (1981) and Raupach (1994), forest density and forest height are likely to influence the optimal...'

Changed as suggested.

- p23124-25: '...Plant Area Index (PAI) can also be estimated from airborne data...'

Changed as suggested.

- p2414: '...ORA maps was tree height, whereas...'

Changed as suggested.

- p2417: '...problematic since - in reality - the presence of clearings...'
- p2418: '...the overall turbulence levels and thereby increase the...'

Changed as suggested.

- p24126-27: 'updated information on forest height and structure when evaluating...'
- p25118: '...appropriate site data that describe forest height, type, and density.'

Changed as suggested.

- p25119: I don't understand why spruces and pines are brought into the paper so abruptly (and at the very end of the manuscript!). Is it essential to talk about spruces and pines at this point?

This was indeed a bit out of place. We introduced the word 'coniferous' earlier in the conclusions instead (line p25112).

- p25124: '. . .DTU Wind Energy, where WASP is maintained, developed, and sold.'

Changed as suggested.

- p26: Check positioning of brackets in Acknowledgements: there seems to be a mistake: bracket required after '(Grant Number 6172-00004B', not at the end of the sentence.

Corrected.

- References: Is it correct that the publication year is at the end? Please check the journal's suggested citation standard (I could not find it)

The journal formatting indeed says it should be in the end, see here: https://www.wind-energy-science.net/Copernicus_Publications_Reference_Types.pdf

From lidar scans to roughness maps for wind resource modeling in forested areas

Rogier Floors¹, Peter Enevoldsen^{2,3}, Neil Davis¹, Johan Arnqvist⁴, and Ebba Dellwik¹

¹Department of Wind Energy, Technical University of Denmark

²Center for Energy Technologies, Aarhus University, Denmark

³Envision Energy, Denmark

⁴Department of Earth Sciences, Uppsala University, Sweden

Correspondence to: Rogier Floors (rofl@dtu.dk)

Abstract. Applying erroneous roughness lengths can have a large impact on the estimated performance of wind turbines, particularly in forested areas. In this study, a new method called the Objective Roughness Approach (ORA), which converts tree height maps created using airborne lidar scans to roughness maps suitable for wind modeling, is evaluated via cross-predictions between different anemometers at a complex forested site with seven tall meteorological masts using the Wind Atlas Analysis and Application program (WAsP). The cross-predictions were made using ORA maps created at four spatial resolutions and from four freely available roughness maps based on land-use classifications. The validation showed that the use of ORA maps resulted in a closer agreement with observational data for all investigated resolutions compared to the land-use maps. Further, when using the ORA maps, the risk of making large errors ($> 25\%$) in predicted power density was reduced by 40–50 % compared to satellite based products with the same resolution. The results could be further improved for high-resolution ORA maps by adding the displacement height. The ~~improvement~~ improvements when using the ORA maps ~~came down to two factors, first they had~~ were both due to a higher roughness length ~~for forests, which was confirmed to by increasing the forest roughness value of the land-use based maps to the value of the ORA map, and second, and~~ due to the higher resolution ~~of the ORA data, since the ORA maps with the highest resolution had the largest reduction in mean absolute errors.~~

15 *Copyright statement.* TEXT

1 Introduction

In the past decade, there has been a significant increase in installed wind power capacity in forested areas across Northern Europe (Enevoldsen and Valentine, 2016). This has been made possible due to the increased hub heights and improved technologies of modern turbines (Enevoldsen, 2016). However, these forested sites typically represent a challenging environment for wind turbines because of high turbulence and wind shear levels (Arnqvist et al., 2015). The forested landscape is rarely homogeneous, containing both forest edges and roughness changes that affect shear and turbulence, and can produce sharp

gradients in the flow (e.g. Poëtte et al., 2017). This, in turn, makes the accurate siting of wind turbines in forested areas critical. For all of these reasons, it is important to parametrize forest effects correctly in wind models aimed at the application of wind turbine siting. The aim of the current study is twofold: (1) to introduce a new and automated way of using highly detailed forest information with the WASP method (Troen and Petersen, 1989) and (2) to investigate how prediction errors change when using
5 different maps to represent the forest.

Starting with the second aim, a short background for the research in forest wind meteorology is given. In surface layer theory, the effect of a homogeneous forested area on the wind speed U is parametrized through a suitable value for the roughness length z_0 as well as a displacement height d in the well-known logarithmic wind profile:

$$U = \frac{u_*}{\kappa} \left[\ln \frac{z-d}{z_0} - \Psi_m \right], \quad (1)$$

10 where u_* is the friction velocity, z is the height above ground and Ψ_m represents the stability correction to the profile and depends on z/L , where L is the Monin-Obukhov length (Businger et al., 1971). Based on this equation, experimental studies on the wind profile over forested areas typically present estimates of z_0 and d as a pair (e.g. Thom, 1971; Hicks et al., 1975; Molder et al., 1999). A dependence between measurable forest characteristics (height and density) and z_0 and d was suggested by Jackson (1981); Raupach (1994).
15 [Raupach \(1994\)](#). According to Raupach (1994), a dense forest should be represented by a relatively lower z_0 and a higher d than a sparser forest with the same tree heights. For sites without forest density information, Garrat (1992) recommended setting $z_0 = 0.1h$ and $d = 2/3h$, where h is the tree height.

The [WASP Wind Atlas Analysis and Application program \(WASP, www.wasp.dk\)](#) method (Troen and Petersen, 1989), which allows for the prediction of a wind climate at a new location using an observed wind climate, ~~It is also available as a flow model in the WindPRO software, which is developed by EMD International A/S (www.emd.dk/windpro).~~ WASP includes z_0
20 in two different ways. ~~In:~~ [in](#) the absence of nearby obstacles, the difference between the predicted and observed wind climate is calculated through a *geostrophic roughness* model that uses Eq. 1 in combination with the geostrophic drag law for vertical and horizontal extrapolation. Heterogeneity in roughness ~~and terrain height~~ is modelled through a *roughness change* model, which consists of an internal boundary layer model that is driven by lines of roughness ~~change lines on a roughness map, and a flow over terrain model that simulates the changes on a map~~ (Sempreviva et al., 1990). [The](#) speed-up effects due to changes
25 in terrain height ~~(Troen and De Baas, 1987)~~ [are taken into account by a flow-over-terrain model \(Troen, 1990\)](#).

Using data from small beech forests, Dellwik and Jensen (2000) showed that the internal boundary layer growth closely resembled the prediction of the WASP roughness change model. In a later study, (Dellwik et al., 2006), it was demonstrated that WASP could correctly predict the wind climate at the forest sites from observations at a nearby agricultural area, when the z_0 value was set to the values found in the surface layer studies mentioned above, which were significantly higher than those
30 that are typically used for forest studies. However, these studies investigated sites with near-surface wind observations in an open landscape with small distinct forests, which differ greatly from the Northern European sites that have recently started to be developed for wind energy. The Northern European sites have a landscape that is dominated by forests with smaller areas of lower-roughness clearings and lakes, leading to study areas where both the observation and predicted sites are located in

a high roughness forested area. This study looks to determine if the roughness map has as much impact at such sites, as was demonstrated for the sites in Dellwik et al. (2006).

There is currently no consensus on how to take d in Eq. (1) into account in WAsP (Enevoldsen, 2017). Many siting engineers use terrain height products from the Space Radar Topography Mission (SRTM) to describe the orography effects ~~in WAsP and~~
5 ~~WindPRO~~, which includes the vegetation height in the terrain height, meaning that for forested areas, the displacement height is already included to some extent (Kelldorfer et al., 2004; Crockford and Hui, 2007). In Dellwik et al. (2006), a terrain height map that did not include the forest height was used ~~, therefore, and~~ the displacement height was included by adjusting the height of the wind observations ~~as in~~ a post-processing step. However, this post-processing approach does not work close to forest edges, since they cause the flow to speed up similar to a terrain height escarpment (Dellwik et al., 2014). In forested
10 sites, measurement masts are often placed in clearings near forest edges, suggesting that the displacement height is particularly important. This study includes an investigation into the impact of adding d to ~~the~~ terrain data on ~~the~~ model predictions.

The performance of the flow modeling depends greatly on the availability of accurate maps of terrain height and z_0 . It is common for siting-engineers to use z_0 maps derived from land-use classifications, and many siting tools, such as WindPRO, ~~which uses WAsP as the flow model,~~ provide these maps for download directly in the software. These maps are quite useful
15 in that they can be obtained anywhere in the world, and do not require additional time to locate and implement in the siting tool. However, because, the land-use categories were not developed for wind energy applications, a specific land use class may not correspond to a unique effect on the wind field. Additionally, neither the forest height nor forest density are typically part of land-use classifications making it difficult to apply the relationship suggested by, *e.g.*, Raupach (1994) to forested areas. This information may be found either by a site visit, or from the forest owners, but it is difficult to find consistent high-quality
20 information over the large areas required for wind resource assessment. This difficulty was one of the starting points for this study and is connected with aim (1) stated above.

An attractive solution to obtaining high-quality information about ~~the~~ forest characteristics can be found in the raw data from remote-sensing Airborne Laser Scans (ALS) for land surface mapping (Clark et al., 2004). During the last decade, ~~the~~ ALS technology has seen a rapid expansion and ALS mapping campaigns have been performed for entire countries (*e.g.* Nilsson et al., 2017). Simultaneously, the price of ALS studies has decreased, making mapping campaigns for in-depth studies possible for both research and commercial wind projects (*e.g.* Boudreault et al., 2017). The raw data from the scans is stored in standard format, allowing siting engineers to use the same data source for land surface description for different sites (for Photogrammetry & Remote Sensing, 2010). Boudreault et al. (2015) introduced a method that used the raw data from ALS campaigns in canopy-resolving flow models. Here, we translate the derived forest height from ALS data to a roughness map for
30 use in a WAsP analysis. The ALS based model results are compared with model results based on ~~the~~ standard land-use ~~based~~ maps. The four land-use based maps tested in this study had different resolutions, and included a varying level of detail. To investigate the importance of resolution, the roughness maps made from the ALS scans were created at resolutions matching the land-use models. In addition to evaluating model performance, the different resolutions allowed for the investigation of how ~~the~~ WAsP handled the large amount of data, with a particular focus on retaining the speed of ~~the WAsP calculation~~ WAsP
35 calculations.

This study performs validation and analysis of the model results for the cross-prediction of 7 masts located in a predominantly forested area in central Sweden. At such high latitudes, icing on cup anemometers and wind vanes is a common problem for wind measurement (Bredesen et al., 2017). There were periods with frozen cup anemometers and wind vanes: the process for removal of these periods is described in ~~(See-2)~~[Sect. 2](#). The processing of the ALS data and its conversion to roughness length and displacement height is presented in [See Sect. 3](#). [See Sect. 3](#) also contains descriptions of the land-use classification based datasets. The WASP flow model and the cross-prediction method used for the model assessment are then described in [Section Sect. 4](#). Section 5 presents the results of the comparison between model performance for the different roughness products. Finally, we discuss uncertainties, opportunities and possible improvements in [Section-Sect. 6](#).

2 Wind measurements

10 2.1 Site and instrumentation

The site used in this study is ~~located~~[situated](#) on two forested ridges in central Sweden (Fig. 1, left). ~~It is located~~ approximately 140 km from the Baltic sea coast ~~and~~, approximately 3° below the polar circle. Within an area of 10×10 km, the site had two 59 m and five 100 m tall meteorological masts, each of which had cup anemometers and wind vanes at several heights (Table 1). The measurement periods were different from mast to mast, but all masts were operational between February 23rd 2009 and February 18th 2010. Three different types of cup anemometers were used; NRG #40 anemometers, manufactured by NRG Systems, Inc., were used for the profile measurements on all masts, the two 59 m masts each had two top mounted WindSensor (Risø) P2546A anemometers (Pedersen, 2004), and the top mounted anemometers on the 100 m masts were Thies First Class anemometers.

Table 1. Measurement period and instrumentation for each of the seven masts.

Mast No	Meas. period	Top	Profile	Heights (m)
1	Jan. 2008 - Mar. 2010	Risø P2546A	NRG40	59.0, 59.0, 57.0, 44.5, 31.5
2	Dec. 2007 - Feb. 2010	Risø P2546A	NRG40	59.0, 59.0, 57.3, 44.0, 32.1
3	Nov. 2008 - Feb. 2010	Thies First Class	NRG40	100.7, 100.7, 96.4, 80.7, 57.8
4	Feb. 2009 - Feb. 2010	Thies First Class	NRG40	100.8, 100.8, 96.4, 80.8, 57.7
5	Feb. 2009 - Nov. 2011	Thies First Class	NRG40	100.8, 100.8, 96.4, 80.9, 57.8
6	Feb. 2009 - Feb. 2010	Thies First Class	NRG40	100.8, 100.8, 96.4, 80.7, 57.6
7	Feb. 2009 - Jun. 2011	Thies First Class	NRG40	100.8, 100.8, 96.4, 80.9, 57.8

2.2 Treatment of observational wind data

20 An initial screening of the observed wind data (10 min averages) showed significant inconsistencies in both wind speed and wind direction. The erroneous data were prevalent during winter, and most likely caused by ice growth on the instruments.

During most of these periods, the wind speed would have a constant near-zero value, signifying that the cup was completely frozen. However, there were also times where the wind speed of a particular anemometer was much lower than expected given other wind measurements, suggesting that the anemometer was able to turn, but at a lower rate than if ice free. The following data screening steps were applied to clean the data of ice contaminated measurements:

- 5 1. Removal of periods when the cup anemometer was clearly malfunctioning; requiring that $0 \leq U \leq 50 \text{ m s}^{-1}$ and $I_u < 1$, where U is the wind speed and $I_u = \sigma_u/U$ is the turbulence intensity, and σ_u is the standard deviation of the wind speed.
2. Removal of periods with constant wind speed; requiring $U_i \neq U_{i\pm 1}$, where i denotes a 10 minute block average.
3. Removal of ice-affected data by comparing pairs of cup anemometers in each mast; requiring the relative difference to
10 at least three other anemometers on the same mast were within 3σ of the ice-free mean relative difference, where the relative difference is defined as $RD = (U_i - U_j)/U_i$ is the relative difference, σ is the standard deviation of RD , and the ice-free period is defined as May to September.

Data passing these criteria were associated with a quality control value (QC) of 1. These steps removed between 8 and 26 % of the data.

- 15 In addition to the ice related issues, it was found that the NRG cup anemometer wind speeds were systematically lower than the top anemometers. We attribute this difference to both mast shadowing and a systematic small instrumental error, possibly related to the temperature response of the instrument. Finally, there was a slight offset between the two top anemometers related to wind direction. To get an accurate wind profile, both the NRG offset error and the top wind speed measurement were corrected as follows:

- 20 1. Determine which top cup anemometer data to use based on wind direction.
2. Calculate the expected top wind speed from the profile cups by linear extrapolation from the two highest profile cups.
3. Define a correction factor as the ratio between the actual top cup measured wind speed and the profile estimated value for each 10-minute period.
4. Apply the correction factor to all wind speeds in the profile.

- 25 The final data cleaning step required that all cup anemometers had simultaneous values of $QC = 1$ to ensure that the wind distributions used in the cross-predictions were generated from the same period across all anemometers. After applying the filtering steps, 8764 ten minute mean wind speeds were available at each height and mast, which corresponds to approximately 1.5 months of data. The effect of the data filtering is shown in [See Sect. 5](#).

- 30 After cleaning the data, an ‘observed wind climate’ was created for use in WAsP. The ‘observed wind climate’ is a histogram of wind speeds for different wind direction sectors, i.e. the frequency of the wind for each wind speed and direction bin. For this study, a data discretization of 1 m s^{-1} for wind speed and 30° for wind direction were used.

3 Site land cover description

3.1 Roughness maps based on land use classes

A common approach of obtaining roughness information for wind flow modeling is through the conversion of land-use classifications, typically derived from satellite data to a roughness length through the use of look-up tables. In this study, four different sources of land use classifications are investigated (Table 2). These four datasets are provided for download by **EMD International A/S** through their **WindPRO** software, which is widely used for wind resource assessments **WindPRO**.

Table 2. Summary of the different land-use data sources ~~that were~~ used for creating the roughness maps

Name	Abbreviation	Spatial Resolution (m)	Number of classifications	Satellite Coverage Date	Reference
CORINE land cover	CORINE100	100	44	2006	EEA (2007)
ESA GLOBCOVER	GLOB300	300	23	2009	Bontemps et al. (2011)
MODIS Vegetation Continuous Field	MODIS500	500	7	2001	DiMiceli et al. (2011)
Global Land Cover Classification (GLCC)	GLCC1000	1000	24	1992-1993	Hansen et al. (2000)

All four of the land-use datasets used in this study are derived from satellite measurements, however, there are some significant differences. The CORINE dataset has the highest spatial resolution at 100m, but only covers Europe. This dataset has **frequently-frequently** been used in mesoscale meteorological modeling (Pindea et al., 2002), due to the high spatial resolution and large number of classification classes. Five of the 44 CORINE classes are associated with forests. The GLOBCOVER dataset has been used in the Global Wind Atlas (Mortensen et al., 2017), and while it has a lower resolution than the CORINE data, it is a more recent dataset, provides global coverage, and, important for this study, has 8 forest classes out of the 23 different land cover classifications. The MODIS Vegetation Continuous Field is not a true land-use dataset. Instead it provides information about three components of the ground cover: percentage of tree cover, percentage of non-tree vegetation, and percentage of bare ground (Carroll et al., 2010). Finally, the Global Land Cover Characterization (GLCC) dataset provides a coarse 1000 m resolution land cover dataset, and is also the oldest of the datasets.

When downloading the data using **WindPro** **WindPRO**, standard roughness conversion tables are used. The values for classes in our model domain are found in **table-Table 3**. While some of the datasets have more forest classes than others, when translated to roughness there are at most two different values of roughness length for the different forest types. Additionally, the values for the different roughness classes are relatively similar across the different products, with the exception of CORINE, which has a category of peat bogs with very low roughness that is not in the other datasets. It is also important to note that the roughness lengths in these tables are not related to the local forest height, just the generic class description.

Table 3. Table with the name of the land use category and the prescribed value values of roughness length r_z for each land-use dataset.

Land Use Definition	Equivalent Prescribed Roughness Length (m)
CORINE	
Coniferous forest	0.5
Transitional woodland-shrub	0.4
Mixed forest	0.5
Agriculture	0.056
Lake	0
Peat bogs	0.0184
Complex cultivation (<u>Mosaic of small cultivated land parcels</u>)	0.0560
Pastures	0.0360
River	0
Non-irrigated arable land	0.0560
Burnt areas	0.2
Broad-leaved <u>Broadleaved</u> forest	0.5000
MODIS VCF	
Canopy cover = 51-75 %	0.4000
Canopy cover = 26-50 %	0.3031
Canopy cover = 1-25 %	0.1000
Canopy cover = 76-100 %	0.5278
Inland water	0.0005
Canopy cover = 0 %	0.0382
GLOBCOVER	
Closed to pen <u>open</u> mixed broadleaved and needleleaved forest	0.4000
Open needleleaved deciduous or evergreen forest	0.3000
Sparse vegetation	0.0500
Mosaic grassland	0.3000
Closed broadleaved deciduous forest	0.4000
Closed to open grassland or woody vegetation on regularly flooded	0.2000
Water bodies	0
Mosaic forest or shrubland	0.4000
Closed needleleaved evergreen forest	0.5000
Global Land Cover Classification	
Evergreen needleleaf Forest <u>needleleaved forest</u>	0.5000
Water bodies	0.0002
Cropland	0.0700
Dryland cropland	0.1000
Mixed forest	0.4000

3.2 Airborne Laser Scans

Although using land-use maps is attractive due to its simplicity, the subjective conversion of land-use classes to roughness length can significantly affect the uncertainty of wind resource estimations, particularly for forested sites (Kelly and Jørgensen, 2017). Therefore, a more objective approach is presented in this section.

5 3.2.1 Estimating elevation and forest height

The area at and around the site was scanned by airborne laser in 2013 from June to October, with a small part of the northern regions being collected in 2012. This timing is fortunate, as the scan period is quite close to the observational period of this study. The scans were made as part of a national survey (Lantmäteriet, 2016). Around 50 GB of data in the .las format, covering a 40x40 km area, were downloaded from the Swedish national database for this study. The reflection points in the point cloud were classified into ground, water, and vegetation points, by the data provider. The data were first processed from the ALS point cloud to a terrain height map, a forest height map, and a map of all the water areas (lakes and rivers) at a $20 \times 20 \text{ m}^2$ grid resolution, using the approach of Boudreault et al. (2015). The terrain height is classified as the median elevation z_m of all ground or points, inside the $20 \times 20 \text{ m}^2$ grid points, depending on if the grid cell was determined to be land or water. The forest height h was estimated as $h = \max(z_i - z_m)$, where h is the forest height and z_i indicates the vertical coordinate of all points i inside the grid point.

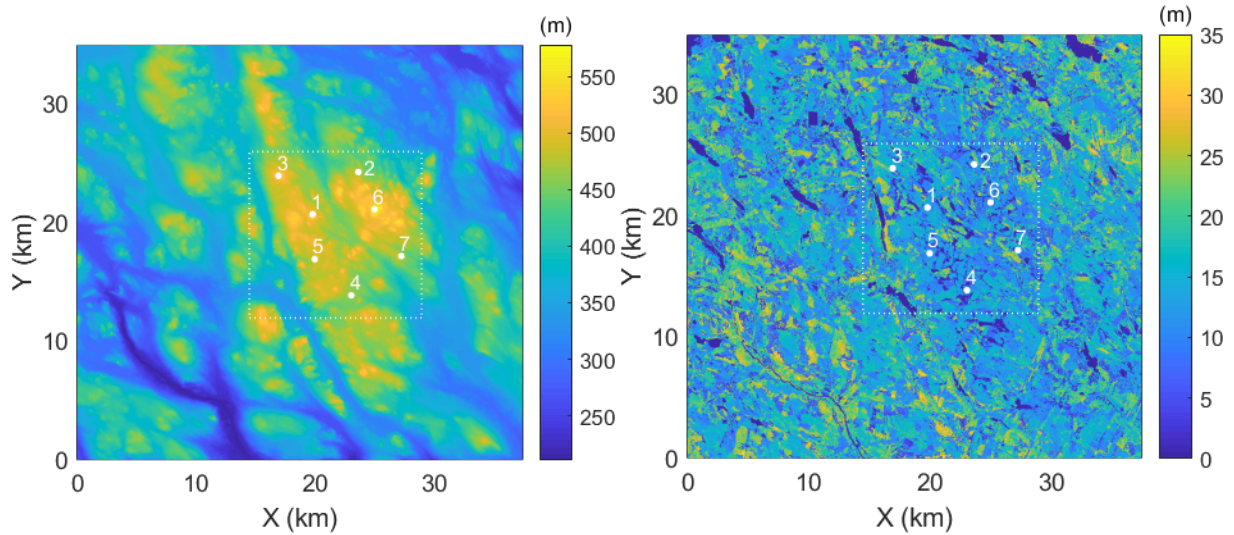


Figure 1. Terrain (left) and tree height (right) maps of the site derived from Airborne Laser Scans with a 20m resolution. The dashed rectangle indicates the area covered in Fig 2, and the numbered points show the locations of the seven masts.

Figure 1 shows the ~~tree heights and elevation~~ elevation (left panel) and tree heights (right panel) derived from the ALS processing, and an overview of the location of the seven meteorological masts used in this study. From the tree height map, it

can be seen that the area is predominately forest, with h ranging from 5 to 35 meters, but also contains areas of clearings. This makes the site ideal for testing the different ~~as the meteorological masts are maps~~, because the flow at meteorological masts is impacted by both changes in ~~tree height and forest edges~~, roughness and the geostrophic roughness (see Sect. 1). The focus of this study is on the forest parameters, but the terrain height will also change the forest's impact on the wind conditions, affecting the results. Therefore, the significant terrain variability of this site was desirable.

The baseline 20×20 m tree height map was based on the maximum tree height. Since the lidar beams do not necessarily hit the tree top, this tree height estimate underestimates the maximum tree height. A relationship between scanning density and maximum tree height was shown in Boudreault et al. (2015). For the site considered here, the scanning density was between 0.25 and 1 points per m^2 , leading to an underestimation of the tree height of up to 2 m. Nilsson et al. (2017) created maps of the *mean* tree height from Airborne Laser Scans using the the 95 percentile of points located above 1.5m above ground, leading to a somewhat lower tree height. Compared to the uncertainties involved in the determination of roughness for the case when no tree height information is available, we consider this uncertainty to be of little importance.

3.2.2 An objective approach to estimate the roughness length and displacement height

The relatively simple conversion recommended by Garrat (1992) of $z_0 = 0.1h$ was used for converting directly between forest height and roughness length. To simplify the maps and reduce the number of roughness changes, for compatibility with WASP, the forest height map was rounded to the nearest 5 m height H . Non-forested areas were identified as regions with vegetation heights lower than 2.5 m, and had their roughness ~~was~~-set to 0.1 m, while water areas were prescribed a roughness value of ~~0.1 mm~~0.0001 m. In summary, the roughness was parametrized as

$$z_0 = \begin{cases} 0.1H & \text{for } h \geq 2.5 \text{ m} \\ 0.1 & \text{for } h < 2.5 \text{ m} \\ 0.0001 & \text{for water areas.} \end{cases} \quad (2)$$

A sensitivity experiment was carried out using conversions of $z_0 = 0.2H$ and $z_0 = 0.05H$ to investigate how the roughness to tree height fraction impacts the modeling error. In addition to the calculation of roughness length, the forest height was used to calculate a zero-plane displacement height d , which was added to the terrain height for a subset of the WASP modeling runs. The relationship between these parameters used in this study again came from Garrat (1992):

$$d = 2/3H. \quad (3)$$

The approach described above is called the Objective Roughness Approach (ORA).

3.2.3 Changing ~~the~~ map resolution

To investigate the impact of ~~the~~ map resolution and provide a fair comparison with the satellite-based maps, the 20×20 m resolution tree height maps were downgraded to 100, 300, 500, and 1000 m resolution roughness and displacement height maps by the following steps:

1. The forest height was re-calculated as the arithmetic mean of the forest height pixels in the higher resolution map.
2. Water areas were kept if the coarser resolution pixel consisted of more than 50 % of high-resolution water pixels.
3. The new forest heights were converted to roughness length and displacement height as in Eq. 2 and Eq. 3.
4. The resulting displacement height was linearly interpolated to a 60×60 m resolution terrain height map. However, in order to simulate a 20×20 m resolution case, we linearly interpolated the 60×60 m resolution terrain height map to a 20×20 m resolution before adding the displacement height map.

All resulting maps from these steps were exported as a Golden Software ASCII grid (.GRD) file for compatibility with the WASP Map Editor. Throughout the rest of the paper, the model simulations using these maps will be labelled as ORA followed by the resolution in meters (e.g. ORA20).

For the simulations where the displacement heights were added to the terrain height, the anemometer heights (Table 1) need to be adjusted. This is done by subtracting the mast displacement height from the anemometer height. The mast displacement height was calculated the same way as it is in WindPRO, the arithmetic mean of all grid points within a 50 m radius of each mast. Table 4 shows the mast displacement heights for each ORA resolution. ORA maps that use a displacement height are labelled with an additional 'D'. All masts are located in small clearings, leading to generally low mast displacement heights, but at coarser resolutions the clearings are less resolved.

Table 4. ~~Table with the displacement heights in meters~~ Displacement height (m) determined from pixels within a 50 m radius around each mast location for each of the ORA maps.

Abbreviation	Mast 1	Mast 2	Mast 3	Mast 4	Mast 5	Mast 6	Mast 7
ORA20D	2.46	5.08	6.39	5.09	6.67	4.77	6.40
ORA100D	5.98	5.43	7.87	8.55	8.13	6.30	8.53
ORA500D	8.11	7.41	10.09	7.57	7.59	7.01	8.34
ORA1000D	7.91	7.98	9.89	7.11	7.38	7.05	9.27

3.2.4 Conversion of raster maps to vector maps for WASP

The WASP model currently only accepts vector based roughness and elevation maps as input. Therefore, the raster based maps produced by the process described above ~~need~~ needed to be vectorized. This process was carried out using Version 11.20.5, Release D of the WASP Map Editor for all ORA resolutions coarser than 20m. The Map Editor allows for the importing of raster based maps, which it then either contours, for elevation data, or converts to roughness change lines. For elevation data, raster data with a 60 m resolution was converted to 10 m equidistant contours. For the roughness change lines, the option to keep the same roughness classes as in the raster file was used. To create the roughness change map, the Map Editor outlines all pixels with roughness change lines that represent the inside and outside roughness value, skipping those where both sides of the line would be the same. After processing the data, they were examined via a geographical information system (GIS) to ensure

that the vector data provided a reasonable representation of the elevation and roughness raster data. For converting the 20m resolution maps, the Terrain workshop, Version 1.1 Release D was used, because the Map Editor was not able to efficiently process the higher resolution data.

4 WAsP setup

5 WAsP version 11.6 was used in this study to simulate the wind resource at the different masts. In WAsP, the effect of changes in roughness length on the wind speed around the site are modeled using the internal boundary layer zooming-grid (IBZ) model (Troen and Petersen, 1989; Sempreviva et al., 1990), while the speed-up effects from terrain elevation are simulated using the spectral model described in [Troen and De Baas \(1987\)](#); [Troen and Petersen \(1989\)](#); [Troen and Petersen \(1989\)](#) and [Troen \(1990\)](#). As input, WAsP requires an observed wind climate and vector maps of elevation and roughness.

10 WAsP uses the following modelling chain to simulate the wind climate at a one position, horizontal and vertical, from an observed wind climate at another position. This modelling chain is extensively described in (Troen and Petersen, 1989) ~~-,but here we briefly repeat~~ and [\(Kelly and Troen, 2016, Eq. 13–15\)](#). [Here we briefly summarise](#) the steps:

1. Fit a Weibull distribution to the observed wind climate for each sector, preserving the third moment of wind speed and the probability to exceed the mean wind speed.
- 15 2. Calculate the background wind profile using the geostrophic roughness and the observed wind [profile speed](#), from which the effects of the roughness changes, terrain height and atmospheric stability at the observational site have been removed.
3. Calculate the [geostrophic](#) wind speed (generalized wind climate) for predefined heights and roughness lengths using the geostrophic drag law in combination with the background wind profile.
4. Apply the effects of geostrophic roughness, terrain height, roughness changes and stability using this generalized wind
20 climate for the predicted site.

The predicted wind climate can be quite sensitive to the choice of the standard heights and roughness lengths used in step 3. For this study, the predefined heights were here set to 3, 10, 30, 60, and 120 m above the surface, and the roughness lengths ~~-,~~ were set to 0.0, 0.1, 0.4, 1.0, 3.0 m, which covers all possible roughness length values that occur in the maps. In the WAsP model, large water bodies are required to have a roughness length of 0.0 m, which are then internally converted to a value of
25 $z_0 = 0.0002$.

The impact of varying topography, roughness changes and orography, is modeled as correction factors that are applied to the scale parameter (A) of the Weibull distribution of the wind climate in steps 1 and 4 of the model chain. For computational efficiency, WAsP filters the roughness changes to include only those that have the most significant impact on the wind [profile speed](#). This is done ~~-,creating a distance-weighted~~ [by creating a distance-weighted](#) roughness length ($\ln z_{0w}$), which is found by mul-
30 tiplying log-transformed roughness values with the exponentially-weighted distance from the mast to the roughness changes

x_k as,

$$\hat{x}_k = x_d \left[1 - \exp\left(\frac{-x_k}{x_d}\right) \right] \quad (4)$$

where x_d is a decay length, which currently is set to 10 km. Then the [most important \$n\$ nodes-items in the array with all transformed roughnesses and distances](#) are found by fitting a step function that stops when either the maximum number of allowed steps n_{\max} is reached or the residual variance RMS_{\max} is below a specified threshold. [More details about the algorithm can be found in Sect. 8.3 in Troen and Petersen \(1989\)](#). The default values for n_{\max} and RMS_{\max} are 10 and 0.3, respectively. From this filtered set of roughness change lines, the internal boundary layer equations described in [Sempreviva et al. \(1990\)](#); [Floors et al. \(2011\)](#); [Floors et al. \(2011\)](#) are applied to the reduced arrays to compute a speed-up factor in each sector.

To calculate the geostrophic wind, WASP uses a corrected logarithmic wind profile, where the correction factors for internal boundary layer and orographic effects have been removed, in combination with the geostrophic drag law. The roughness length that is used in these relations is the so-called geostrophic roughness length z_{0G} , which is computed sector-wise from the mean of $\ln(z_0)$ and with a distance weight similar to Eq. 4:

$$\ln z_{0G} = \ln(z_{01}) \left[1 - \exp\left(\frac{-x_1}{x_d}\right) \right] + \sum_{k=2}^{N-1} \ln(z_{0k}) \left[\exp\left(\frac{-x_{k-1}}{x_d}\right) - \exp\left(\frac{-x_k}{x_d}\right) \right] + \ln(z_{0N}) \left[\exp\left(\frac{-x_N}{x_d}\right) \right], \quad (5)$$

where z_{01} is the roughness length at the mast, $k = 2, \dots, N-1$ denotes the k^{th} roughness change from the mast location and N is the last roughness change on the map.

In addition to the standard inputs, WASP uses the long-term distribution of heat fluxes at the site to model the effect of atmospheric stability. Since no heat flux observations were taken at the site, the default heat flux distribution, with mean and the standard deviation of -40 and 100 W m^{-2} , respectively, was used over land. Over water, these values were set to -8 and 30 W m^{-2} .

The performance of the different topographic maps was evaluated using cross predictions. A cross prediction is defined as the prediction of the flow from one observed wind climate, a specific mast and height, to another observed position, either another height on the same mast or an observed height on another mast. Cross predictions were made from all four heights at six of the seven masts, [but](#) at mast 6 the 80.7 m height was excluded due to the limited amount of data with $\text{QC} = 1$. After excluding self-predictions, i.e. predictions and inputs at the same mast and height, there were a total of 702 different combinations. The relative errors for each cross prediction were computed as a percentage from the observed (*obs*) and modelled data (*mod*) as $\delta = 100(\text{mod} - \text{obs})/\text{obs}$ for both wind speed (δU) and power density (δP). It is important to include power density in the evaluation, since the production of wind turbines is determined by the available power. The total power density is calculated by summation of the frequency weighted third moment of the Weibull distribution from each sector of the total of number of sectors D ,

$$P = \sum_{l=1}^D 0.5 \rho f_l A_l^3 \Gamma(1 + 3/k_l), \quad (6)$$

where ρ is a reference air density (here 1.225 kg m^{-3}), f is the frequency of occurrence and k is the shape parameter of the Weibull distribution. Kelly et al. (2014) showed that errors in k can result in large errors in P .

5 Results

The results are presented in three sub-sections. First, the ORA roughness lengths will be compared with the roughness lengths from the land-use based datasets. Second, the results of the wind data filtering algorithms will be shown. Finally, the results from the WASP cross predictions are shown.

5.1 Roughness maps

Figure 2 shows the roughness lengths of the four different land-use based datasets and two resolutions of the ORA data. It can be seen that the small lakes in the eastern part of the domain are not well represented at resolutions of 300 m or more. In addition to the different roughness length values, the forest edges and clearings are positioned differently across the different datasets.

In the ORA maps the average roughness of the map varies between 1.42 and 1.46 m. The logarithmic average roughness value over these map changed from 1.02 m (20×20 m) to 1.39 m (1000×1000 m) resolution. The impact of resolution is discussed further in Sec 6.

It is clear from Fig 2 that the roughness lengths from the ORA maps are larger than from the land-use based maps. Additionally, the ORA data, in part due to the higher roughness values, has significantly more roughness changes. For example, CORINE only has two forest roughness lengths, 0.4 and 0.5 m, while the ORA data represents forest roughness lengths in 6 different bins from 0.5 to 3.0 m.

These features can be seen more clearly in the histogram of the roughness lengths for each map (Fig. 3), in this figure the ORA data has the highest and lowest resolutions tested. For example, the roughness lengths of the grid cells in the ORA maps are higher on average and are spread over more bins than the satellite-based maps. The GLCC data set is dominated by a single land use class with $z_0 = 0.5$ m. The MODIS data have slightly more detail and grid cells with $z_0 = 0.3$ m are most frequent. The CORINE data has the highest resolution of the land-use based products, and has most grid cells with $z_0 = 0.5$. Note that the CORINE and ORA20 maps include more variation of the roughness, which causes the geometric mean to be smaller than the arithmetic mean.

5.2 Wind distributions and profiles

To demonstrate the impact of the quality control that was described in Sect. 2, three distributions of wind speeds at different stages of the quality control process are shown for the cup anemometer located at mast 1, 59 m (Fig. 4). Due to the confidentiality of the data, a normalized wind speed \hat{U} was computed by dividing each 10-minute measurement by the mean wind speed of the filtered data. The distribution before any QC filtering (Fig. 4a) shows a high frequency of measurements with very low wind speeds (< 0.2) as well as an increase in wind speed occurrences between 0.2 and 1.0, when compared

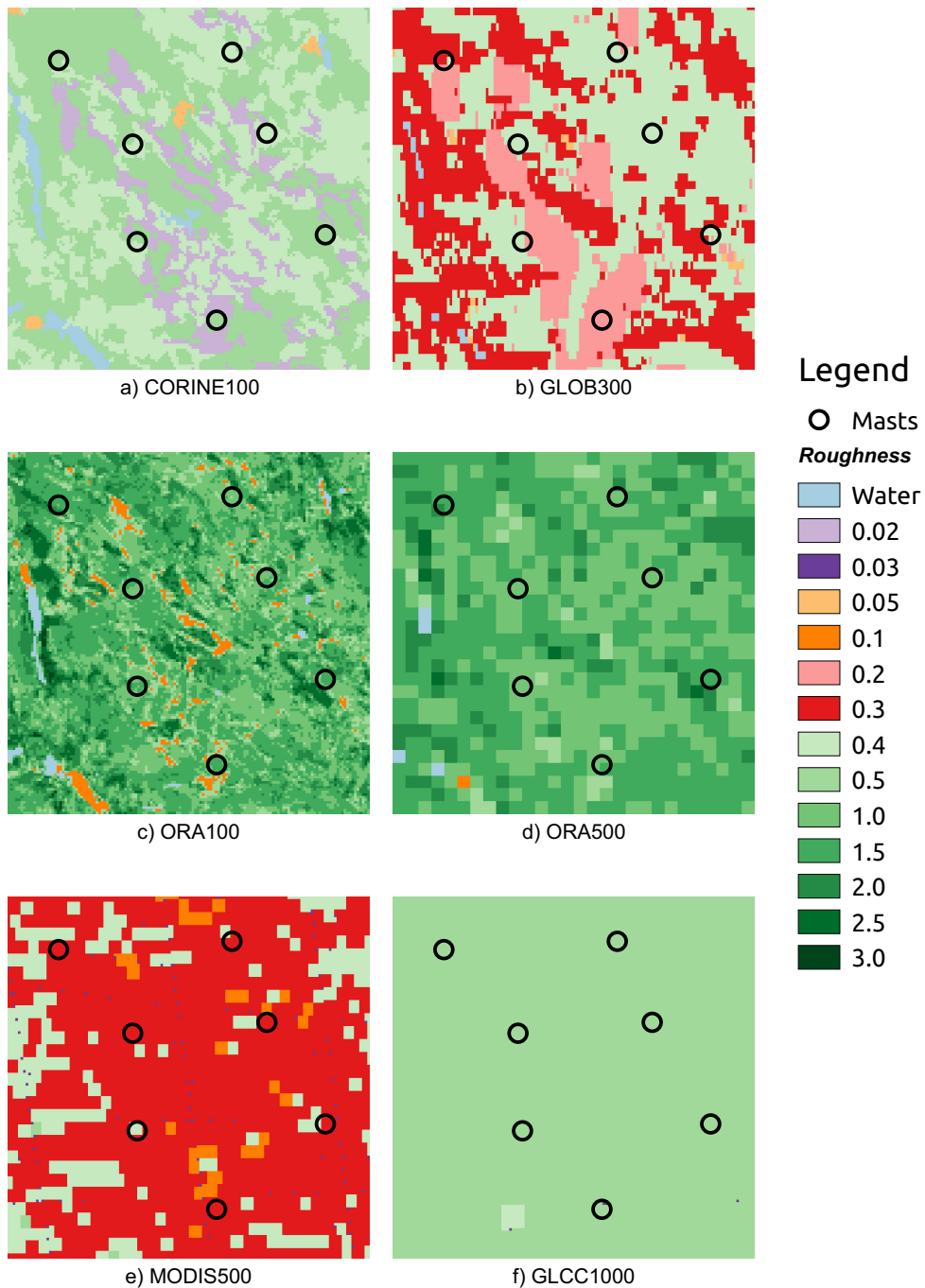


Figure 2. Roughness maps from land-use datasets, and from ORA at 100 and 500 m resolutions, colored by roughness valuevalues. Open circles show mast locations.

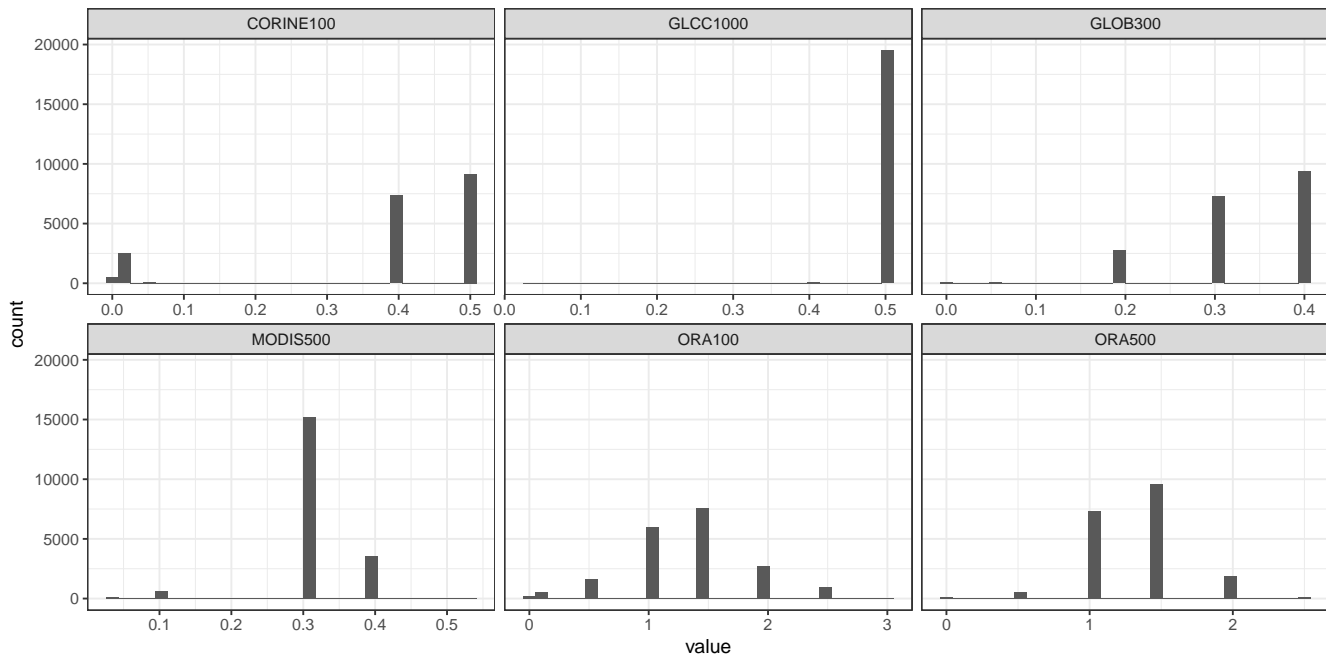


Figure 3. Histogram of roughness for different datasets over the same domain as shown in Fig.2. The header of each graph also contains the arithmetic and geometric means of roughness for the region.

to the distribution in Fig. 4b that includes only data **flagged** with $QC = 1$. These differences likely reflect the icing of the cup anemometers. Because of the large number of near-zero wind speeds, the Weibull distribution from the WASP method in Fig. 4a gives a rather poor fit. The fit was improved for the distributions including only data with $QC = 1$ (Fig. 4b), which includes 59% of the original data set, and requiring that $QC=1$ for all cup anemometers simultaneously (Fig. 4c), which retains only 16 %

5 of the original dataset. The mean wind speed for the three distributions were 0.85, 0.97 and 1, highlighting that although there was a large change in dataset size when requiring $QC = 1$ for all cups simultaneously, there was a small change in mean wind speed compared to $QC = 1$ for a single location. This relationship was found for all masts and heights. All 27 anemometers showed an increase between 1 and 6 % when demanding that $QC = 1$ for all cup anemometers simultaneously, which shows that the wind climate in the final dataset used for the validation is representative for the site.

10 Fig. 5 shows the vertical profiles of mean wind speed for all anemometer positions using the observed wind climate from mast 1 at 59 m. The data has been normalized with the mean wind speed from the observed position. In addition to the land-use based simulations, the ORA runs include the highest resolution maps both with displacement heights included (ORA20D) and without (ORA20). The impact of introducing a displacement height can be observed near the canopy, where the wind speed is much lower than when a displacement height is not included. At masts 1, 3, and 7 the ORA20D simulations are closer to

15 the observations than without displacement, while they are comparable at the other masts. At higher heights, the differences in

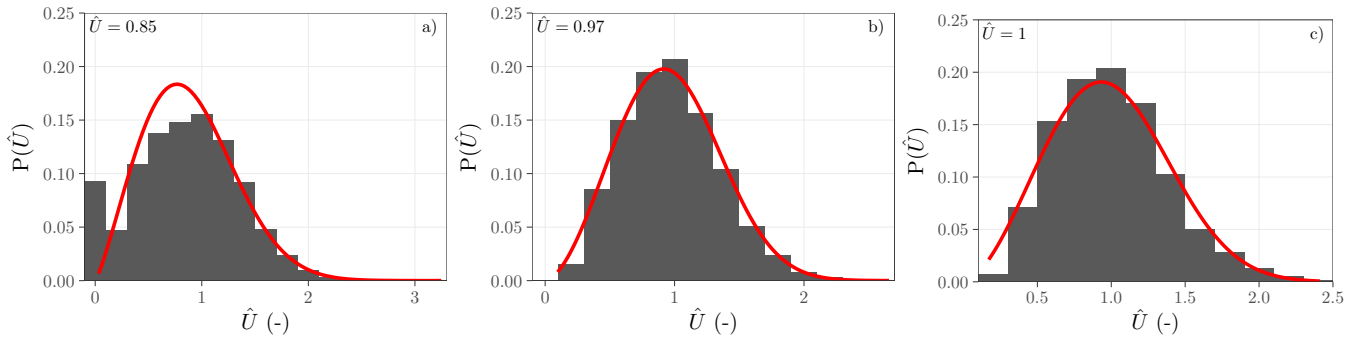


Figure 4. Histogram of the observed all-sector normalized wind speed \hat{U} (see text) at mast 1 at 59 m agl without any filtering (a), after selecting data with QC = 1 with 59 % of the data (b) and during the times when all masts simultaneous had QC = 1 with 16 % of the data (c). The red line denotes the Weibull distribution that the-WASP fits for this histogram.

mean wind speed between different tests are smaller. The worst predictions occur at mast 6, however, this site is at a higher hill than the other masts, so this difference could be due to orographic speed-ups.

5.3 WASP sensitivity to different roughness maps

The first test performed was to investigate the sensitivity of the ORA method to different tree height to roughness length conversions in Eq. 2. In this sensitivity test, simulations were performed using maps where $z_0 = H/5$, $z_0 = H/10$ and $z_0 = H/20$ with and without applying a displacement length. For each pair of observed histograms, the histogram at the source location was used to predict the wind distribution at the target location and compared to the observed histogram at the target location (see Sect. 4). The resulting mean absolute error from all 702 cross-predictions, $|\delta\bar{U}|$, of the 702 cross-predictions are is shown in Fig. 6, for these tests as well as a sensitivity test of the CORINE land-use based roughness.

For the roughness maps without a displacement height, it can be seen that increased roughness lengths result in lower errors, i.e. $H/20$ has the highest error and $H/5$, which corresponds to a mean roughness length of more than 2 m, has the lowest. When a displacement height is applied, better representing the location, $H/5$ test has the largest errors, while the tests using $H/10$ and $H/20$ maps have very similar $|\delta\bar{U}|$. When looking at power density, it was found that that the ORA100D simulations with $H/10$ and $H/20$ had a $|\delta\bar{P}|$ of 9.48 % and 10.74 %, respectively. This study shows that $z_0 = H/10$ is a reasonable modelling choice.

After finding that higher roughness lengths lead to better results, and noting that the roughness maps based on land use classes (GLCC1000, MODIS500, CORINE100 and GLOB300) are characterized by much lower roughness lengths than the ORA maps (Fig. 3), one could hypothesize that increasing z_0 in the satellite based products to a more realistic value would improve the results. The CORINE100 data was chosen for this since it could be seen that the CORINE100 map had a realistic representation of the land use around the site (Fig. 2).

To test this, the roughness length of the forest classes (i.e. areas with $z_0 = 0.4$ m and $z_0 = 0.5$ m) in the CORINE100 map were increased by a factor of three to 1.2 and 1.5 m, respectively, which is approximately the roughness length observed in

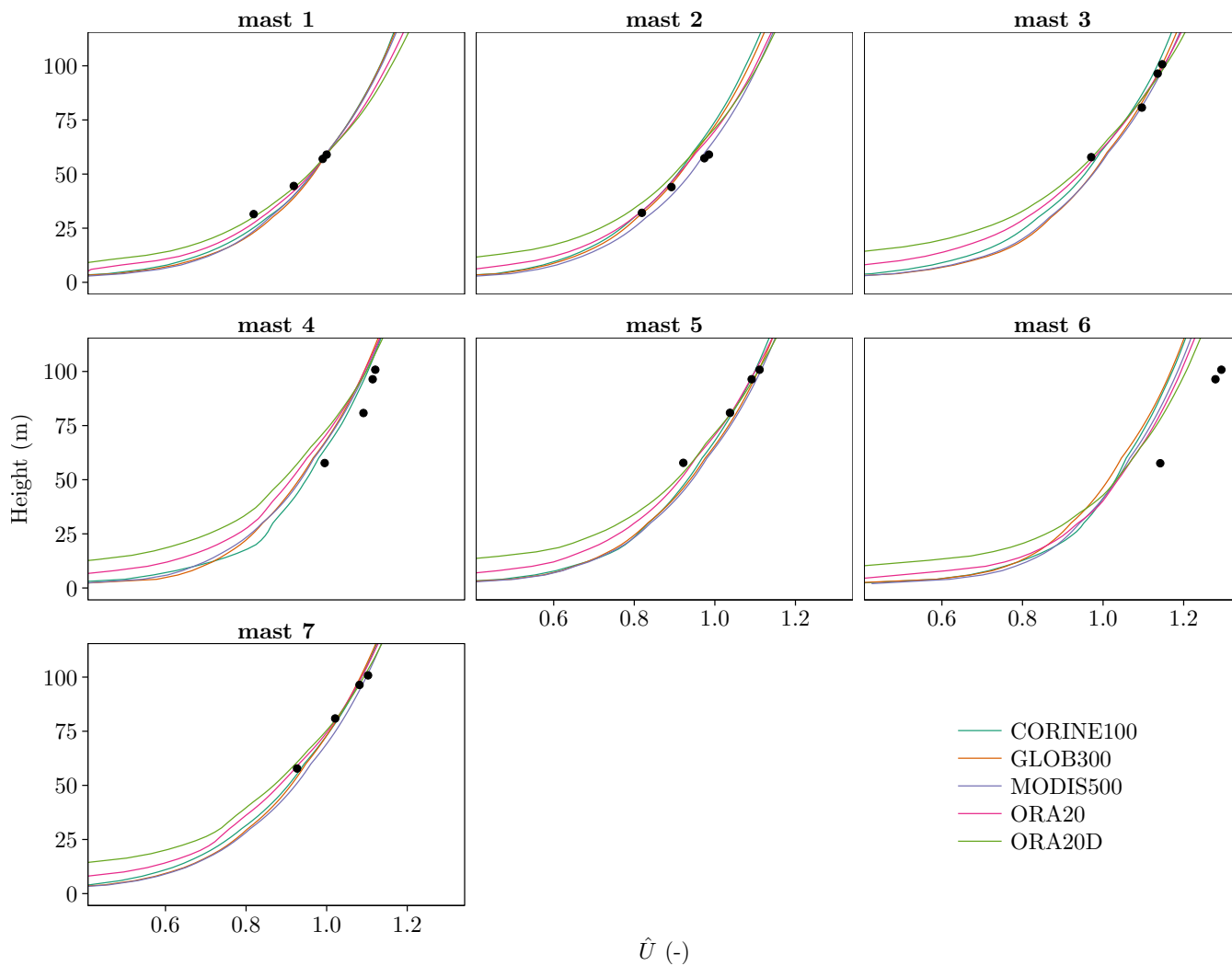


Figure 5. The all-sector modelled mean wind profile (lines) and the observations (points) at the seven masts. All the profiles were obtained by using the observed wind climate from mast 1 at 59.0 m and have been normalized by the mean wind speed observed there.

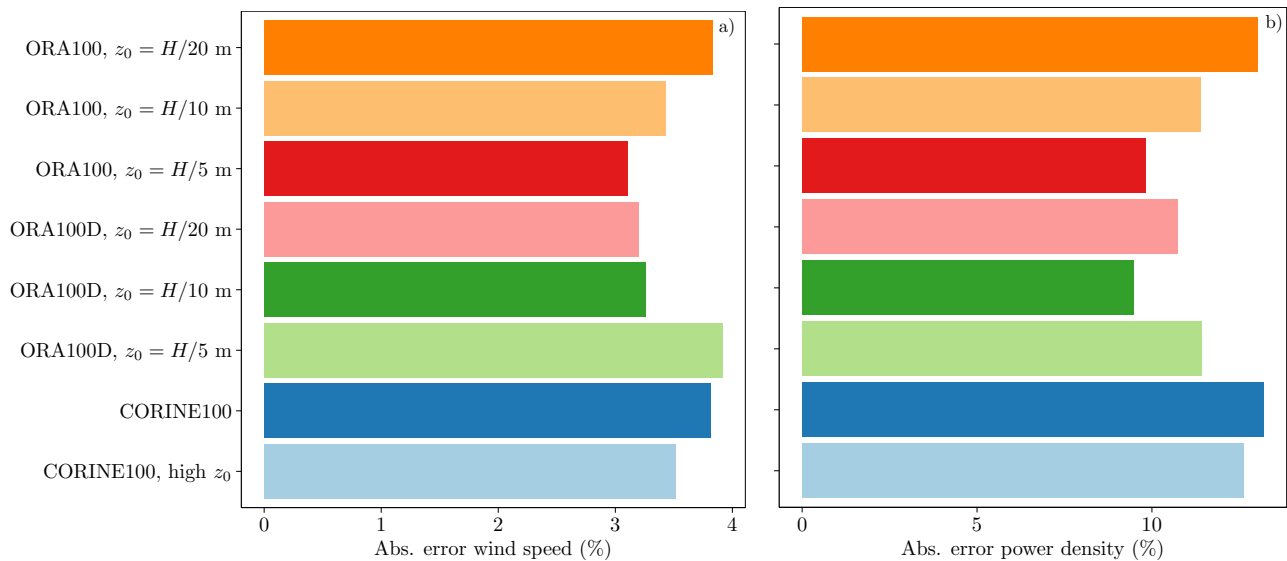


Figure 6. a) The mean Mean absolute error in wind speed (%) or and b) power density for all simulations using a landuse land-use description with a resolution of 100 m

maps using the ORA approach (see Fig.3). The simulation using this roughness map is labelled with "high z_0 " and had an error of $|\overline{\delta U}| = 3.5$ %, which is closer to the ORA100 test's error of $|\overline{\delta U}| = 3.4$ % than the standard CORINE100 test with an error of $|\overline{\delta U}| = 3.8$ %. Therefore, the performance of the land-use based maps could potentially be improved for this site by increasing the roughness length. However, the factor of three was chosen based on knowledge of the roughness length from the ORA maps, so in the absence of tree height measurements it could be difficult to set the correct value.

The next sensitivity test was designed to investigate the effect of the data filtering on the roughness change model. This was achieved by changing the limit of RMS_{max} to ≈ 0 and varying n_{max} from 0 to 10, which causes the model to include only n_{max} roughness changes after filtering. Note that using 0 roughness changes disables the internal boundary layer model, which means that all observed differences are due to a different z_{0G} (see Sect. 4). To isolate the impact of taking more roughness changes into account, all simulations were normalized by the $|\overline{\delta U}|$ from simulations with 0 roughness changes.

Fig. 7 shows the normalized $|\overline{\delta U}|$ for different numbers of roughness changes. It can be seen that for most roughness maps, the model errors generally decrease from 0 to 2 n_{max} , and for larger n_{max} the ratio is more constant. This indicates that in this case only two roughness changes contribute significantly to WAsP modelling at each mast. This is consistent with the best practice for hand digitizing roughness maps, which states that only the most important roughness changes need to be digitized (Mortensen, 2016). It should be noted that n_{max} is likely site-specific and that using $n_{max} > 2$ could still give significant improvements at other sites.

By comparing the different ORA resolutions, the impact of resolution on the roughness change model can be examined. It was found that the simulation using the ORA20 map had the largest reduction and $|\overline{\delta U}|/|\overline{\delta U}_0| \approx 0.86$, while the coarser resolution ORA1000 map did not have as large of a reduction in error ratio, $|\overline{\delta U}|/|\overline{\delta U}_0| \approx 0.94$ using > 2 roughness changes.

This shows that the resolution is important for roughness change modelling, which was expected since the higher resolution maps can better resolve the precise location of a roughness change. Interestingly, the GLOB300 simulations have $|\overline{\delta U}|/|\overline{\delta U_0}| > 1$, indicating that the map with $n_{\max} = 0$ performs best. This means that the model results can lead to larger errors when including roughness changes that do not well represent the modeling area.

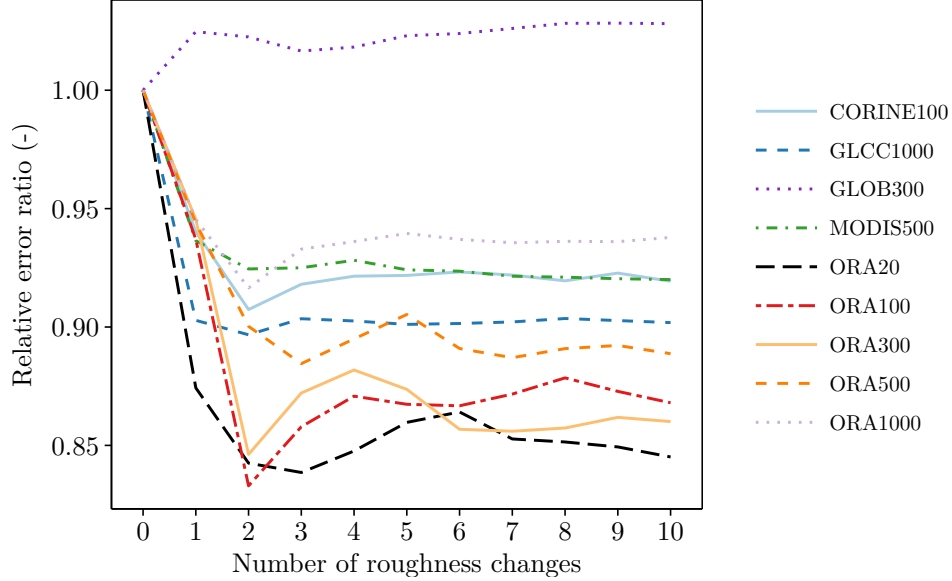


Figure 7. The Ratio between the mean absolute error in wind speed, $|\overline{\delta U}|$, and the mean absolute error without taking into account any roughness changes ($|\overline{\delta U}|/|\overline{\delta U_0}|$) as a function of the number of significant roughness changes n , where for each n we normalized by the mean absolute error in wind speed from simulations with the roughness change model switched off.

- 5 To further illustrate the effect of using different maps, we can plot the $|\overline{\delta U}|$ as a function of $\overline{z_{0G}}$ (Fig. 8), where $\overline{z_{0G}}$ is the all sector geostrophic roughness length, which was calculated as the geometric mean of z_{0G} from each sector. Since there are no displacement heights available for the land-use based maps, the displacement height was not used in this comparison. As expected, the satellite based products have a much lower $\overline{z_{0G}}$ than the ORA maps. There is also a relationship between the model error and $\overline{z_{0G}}$, in that the MODIS500 map has the highest $|\overline{\delta U}|$ of $\approx 4.4\%$, with the lowest $\overline{z_{0G}}$, whereas the ORA1000
- 10 map has the highest $\overline{z_{0G}}$ and the lowest $|\overline{\delta U}|$ of $\approx 3.4\%$.

The effect of including a displacement height for the ORA maps at different resolutions is shown in Fig 9. The roughness change model is used with the default settings (see Sect. 4), so these results are impacted by both the roughness changes and the different values of z_{0G} . The ORA20D and ORA100D have a $|\overline{\delta U}|$ that is $\approx 0.2\%$ lower than the ORA20 and ORA100, respectively, so they benefit from including a displacement height.

- 15 At coarser resolutions, adding the displacement height increases $|\overline{\delta U}|$ by $\approx 0.5\%$. The displacement height at all masts using the ORA1000 map is significantly higher than for the ORA20 map (Table 4). This suggests that the displacement height for the coarser resolutions is likely too high, because the forest clearing around the mast is not resolved. Therefore, it is

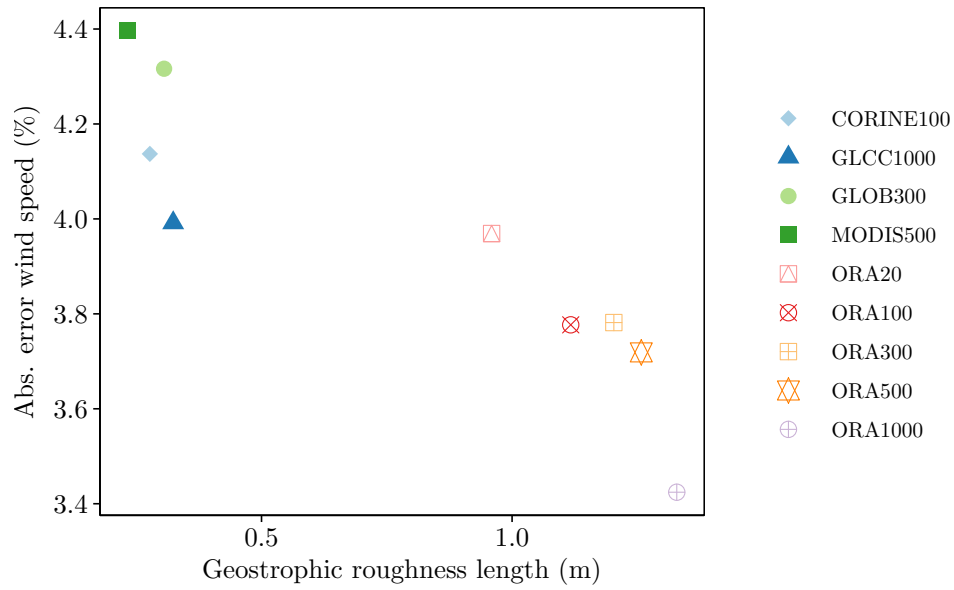


Figure 8. The ~~mean~~ Mean absolute error in wind speed as a function of the geostrophic roughness length when using the default WAsP settings but with the roughness change model switched off.

recommended that the displacement height correction should only be performed when the resolution of the map is sufficient to represent the effect of forest clearings near the mast.

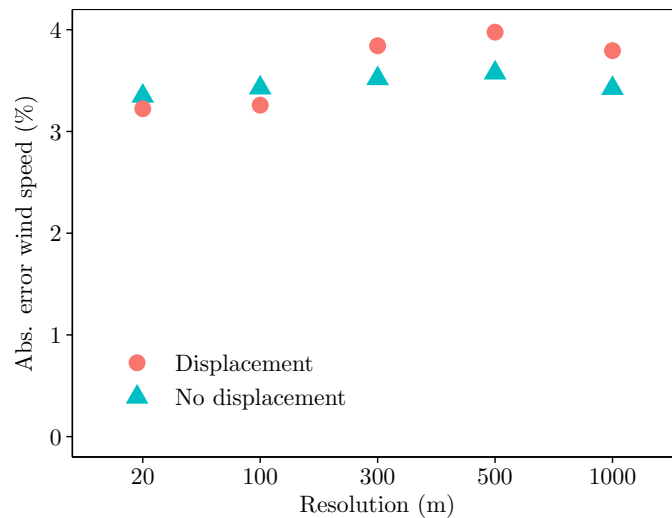


Figure 9. The mean absolute error of the simulations with the ORA maps with and without applying a displacement height for different map resolutions.

5.4 Summary of using different roughness maps

In this section, the overall performance of WAsP simulations using satellite based maps and the proposed ORA approach is summarized. Thus far, only $|\overline{\delta U}|$ was used for comparing the model results, since the comparisons were largely investigations of the model behavior. However, for an annual energy production estimation, it is more relevant to quantify map-related errors on $|\overline{\delta P}|$ (Eq. 6) to assess the potential performance of the wind turbine. Therefore, to evaluate the overall performance of the modelling with different maps, both $|\overline{\delta U}|$ and $|\overline{\delta P}|$ will be used.

Fig. 10 shows the distribution of $|\delta P|$, for each of the cross-predictions, binned in three categories for all four land-use based maps and the highest resolution ORA map with a displacement height. For this analysis, the cross predictions are broken into two types: ~~horizontal~~ Horizontal predictions (Fig. 10a) are those where the observed wind climate and the predicted wind climate are from different masts, while the vertical cross-predictions are those where they come from the same mast (Fig. 10b).

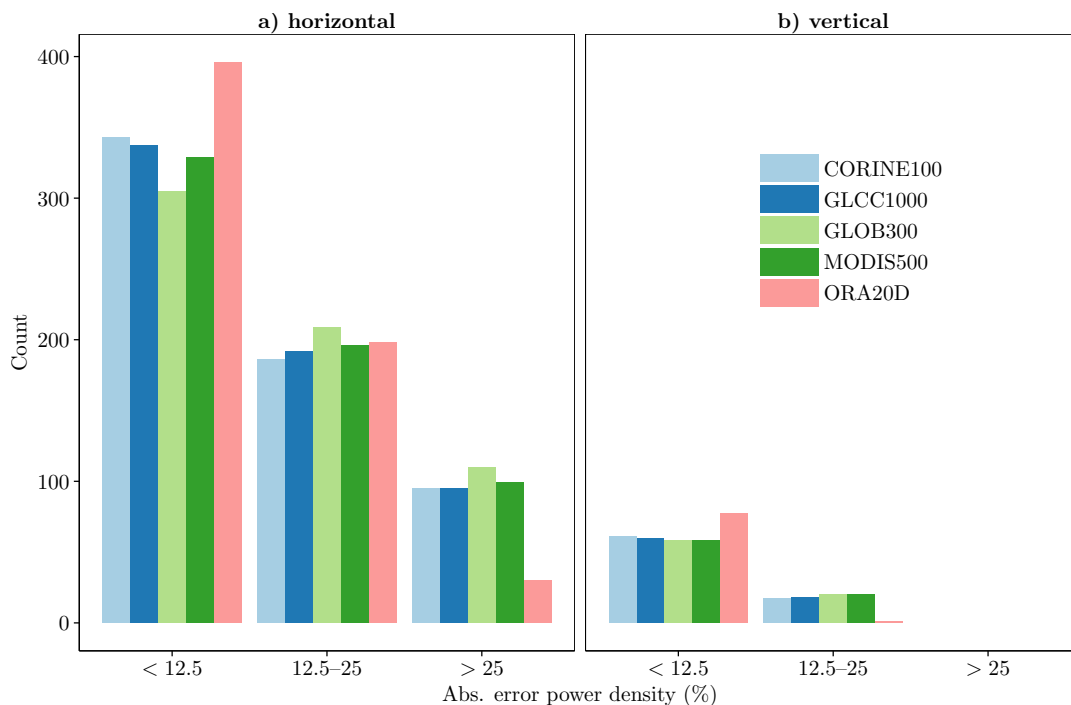


Figure 10. Absolute percent errors of the power density for 702 cross predictions using simulations with different maps.

Ideally, we want as many cross-predictions with $|\delta P| < 12.5\%$ as possible. For the horizontal cross-predictions, there are $\approx 20\%$ more predictions in this category for the ORA20D run than for the land-use based maps. On the other hand, the number of very high errors, $|\delta P| > 25\%$, is greatly decreased, for the horizontal cross-predictions, when using the ORA20D map, from ≈ 100 when using the CORINE100 and GLCC1000 map to ≈ 20 when using the ORA20D map.

For the vertical cross-predictions (Fig. 10b), the errors are much smaller than for horizontal extrapolations because there are the same topographic errors for the input and the predicted anemometers. However, as in the horizontal cross-predictions, the

ORA20D run has fewer high error predictions than land-use based roughness map; the ORA20D simulation had only 1 error $> 12.5\%$, whereas for all other land-use products they occurred at least 11 times.

Even when comparing maps with the same resolution (not shown), i.e. the CORINE100 with the ORA100 simulation, the number of cross-predictions with errors larger than 25% decreases from 75 to 44, a 41 % decrease. Using the ORA300 compared to the GLOB300 simulation decreases these errors by 51 % and using the ORA500 compared to the MODIS500 decreased them by 40 %.

Table 5 provides summary error statistics of the results from the 702 cross predictions for all land-use, ORA and ORA with displacement simulations. In addition to the mean absolute error of δU and δP , which has been shown previously, the mean bias and root mean square error (RMSE) have been included. The RMSE penalizes high errors more than the mean absolute error, and therefore identifies simulations that have a narrow error distribution.

Table 5. Summary of the error metrics using all model runs (702 cross predictions). Defining y as modelled and x as observed variable with a line denoting a mean, the mean absolute error is defined as $100\overline{|(y_i - x_i)/x_i|}$, the mean bias as $100\overline{(y_i - x_i)/x_i}$ and the root-mean-square error (RMSE) in percent of the wind speed U and the power P as $\sqrt{(100\overline{(y_i - x_i)/x_i})^2}$. The lowest value of an error metric is denoted in bold.

	Mean bias U (%)	Mean abs. error U (%)	Mean abs. error P (%)	RMS error U (%)	RMS error P (%)
CORINE100	0.30	3.82	13.19	5.02	17.09
GLOB300	0.31	4.27	14.41	5.48	18.49
GLCC1000	0.51	3.61	13.14	4.91	17.05
MODIS500	0.22	4.10	13.60	5.21	17.35
ORA20	0.50	3.35	11.15	4.27	14.10
ORA100	0.34	3.43	11.39	4.36	14.24
ORA500	0.17	3.58	11.57	4.51	14.39
ORA1000	0.06	3.42	10.61	4.27	13.16
ORA20D	0.49	3.22	10.03	4.07	12.40
ORA100D	0.36	3.26	9.48	4.03	11.70
ORA500D	0.23	3.98	11.67	4.98	14.48
ORA1000D	0.10	3.79	11.12	4.72	13.73

All ORA based simulations have lower $\overline{|\delta P|}$ than any of the simulations using land-use based maps. The same is true for the RMSE of δP , where the improvement of the simulations with the ORA roughness maps is even larger, due to the reduced number of large errors as seen in Fig. 10.

Furthermore, it was found that the ORA100D simulation has the lowest $\overline{|\delta P|}$, RMS of δU , and RMS of δP , whereas the ORA20D has the lowest errors in $|\delta U|$. The ORA20D map results in lower errors due to a more accurate roughness change description (Fig. 7), and due to the application of a displacement height (Fig. 9). However, the z_{0G} was lower than that used for better performing maps in the no-roughness change tests (Fig. 8). From these results it's clear that the ORA maps provide better

results, both due to the higher z_{0G} and because of the increased detail of the forest structure. For this site, a best-performing map could likely be created by using the 20 m resolution map with a slightly higher z_0 .

The land-use based land cover simulations perform similarly despite different resolutions and ~~vastly~~ different descriptions of the land use. For example, the GLOB300 and CORINE100 simulation both have a rather high RMSE for both U and P ,
5 despite having a high resolution. This highlights that resolution is not a panacea, but only improves performance when the surface is accurately represented. For example, the GLCC1000 simulation has almost no roughness changes (see Fig.2), but has the lowest RMSE in U and P out of the satellite based products. Also we noted that the CORINE100 with a high z_0 (see [See Sect. 5.3](#)) reduced $|\overline{\delta P}|$ to 12.63 % and the RMSE of δP to 15.76 % (not shown), however, both are still significantly higher than all of the ORA runs. This shows that tweaking z_0 of certain land use classes in existing satellite-based maps will only
10 partially reduce the model errors.

In Table 5, the mean bias of U is very close to zero for all model runs. The ORA1000 simulation has the lowest mean bias of U . One would expect a difference between runs with a very low and very high roughness, for example the CORINE100 and ORA100 run. However, it can be seen that for both of these runs, the bias is close to zero. This is likely because the cross-prediction includes both upwards and downwards predictions. This results in errors that will cancel each other out; e.g. a too
15 low prescribed roughness results in an over-prediction for an upward extrapolation, but an under-prediction for a downward extrapolation.

6 Discussion

The presented results for the mean prediction error in Table 5 show a complex inter-dependency of roughness magnitude (Fig. 6 and Fig. 8), imprecision of roughness lines due to either limited map resolution or a coarse land-use classification (Fig. 7),
20 and inclusion (or not) of displacement height (Fig 5 and Fig.9). Nevertheless, the ORA approach showed consistently improved results relative to the roughness maps based on land-use classification for the studied site. This demonstrated robustness of the ORA approach should make it attractive to use for turbine siting. Given the relatively small processing time needed to make the maps, and the fact that all maps could be loaded into WAsP and predictions finalized within a few minutes, the approach is promising. At this site, it turned out to be better to use a land-use map with hardly any roughness change lines than to
25 use products with more detailed, but incorrect information, ([e.g. GLCC1000 versus GLOB300](#)) when comparing only the commercially ~~available~~ [available](#) maps (Table 5).

6.1 Ideas for further improvements

As argued by Jackson (1981) and Raupach (1994), ~~the forest density in addition to the forest height is~~ [forest density and forest height are](#) likely to influence the optimal ratios of z_0/H and d/H . Since forest density in terms of Plant Area Index (PAI) can
30 also be estimated from ~~the~~ airborne lidar data (Boudreault et al., 2015), it would be interesting to investigate a more refined roughness classification based on this parameter. It was also demonstrated that raising the roughness value in the CORINE data reduced the mean prediction error compared to the original roughness conversion (Fig. 6), indicating that this potential "quick

fix" could result in significantly reduced errors. Without access to forest height information, it will however be hard to justify the exact level to which the roughness should be adjusted to. Since imprecise roughness change lines can lead to an increase in prediction error, as seen when using GLOB300 data (Fig. 7), a simpler way of reducing the error could be to smooth the map and increase the geostrophic roughness in order to achieve lower error, as demonstrated for the ORA maps in Fig. 8. The results in Fig. 8 reinforce the recommendation to use high values of roughness length for forested areas, even for landscapes where all most observations are affected by the forest.

When downgrading the resolution of the ORA maps, the arithmetic average of the roughness remained nearly-identical, because the starting point for all the ORA maps was the tree height, whereas the presence of clearings in the high-resolution ORA maps reduced the geostrophic roughness (Fig. 8), since the WASP method uses the geometric average (see *e.g.* Taylor, 1987, for a motivation and more background). In forested areas, the use of geometric averaging could be particularly problematic ~~;~~ ~~since~~ ~~;~~ ~~in-reality~~ ~~;~~ ~~since~~ ~~-~~ ~~in~~ ~~reality~~ - the presence of clearings, which have low roughness lengths, tend to increase the overall turbulence levels ~~;~~ ~~and~~ ~~thereby~~ ~~;~~ ~~and~~ increase the aggregated roughness of the landscape (Lopes et al., 2015). It should also be noted that the log-space averaging approach has limitations for low vegetation, since it omits the significant non-equilibrium effects of roughness aggregation (Hasager and Jensen, 1999).

Because of the log-averaged aggregated geostrophic roughness, it would be of interest to systematically investigate the roughness value chosen for the clearings. The value of $z_0 = 0.1$ m, used in this study, was assessed to be low for a newly cleared forest area, but reasonable-to-high for low-vegetation wetland. If a larger roughness length was used for the clearings, it would be expected that z_{0G} would also be increased, which would reduce the error associated with the geostrophic roughness closer to the level of the ORA1000 map. There is, however, a risk that increasing the value could affect the filtering of significant roughness changes, which could thereby increase the related error.

6.2 Does a better map make a significant difference?

The reduction in *mean* prediction error for both the mean wind speed and power density is only a few percent. However, as demonstrated in Fig. 10, this reduction reflects changes over a wide distribution of cross-prediction errors. We see the demonstrated reduction of the large errors as one of the main advantages of the ORA method, since such large errors in the predicted wind climate could result in significant costs when estimating the performance of a wind turbine throughout its lifetime. Whereas large errors could result in higher lifetime costs of turbine operation at any site, Enevoldsen (2017) revealed that wind turbines located in forested areas are more prone to experience fatigue loads, vibration errors, and lower annual energy productions than other sites. Therefore, an improved wind climate prediction could be of high consequence for the forested landscape.

With this in mind, it is recommended that effort is put into finding accurate and updated information on ~~the~~ forest height and structure ~~;~~ when evaluating an optimal location for wind energy exploitation in forested areas ~~to minimize the risks inherent in project evaluation~~. For the reasons stated above, we also recommend investigating the sensitivity of the observed wind climate to the relationship between z_0 and H , since the ratio used here may not be optimal for other forests.

6.3 Availability of tree height information data

To the authors' knowledge, databases of freely accessible ALS data already exists for Denmark, Finland, and England. In other countries, such as Sweden, data are accessible at reduced cost (compared to a new campaign) for international researchers and companies, whereas they are freely accessible for national researchers.

- 5 The processing of lidar data to tree heights is relatively simple, and can be performed on a normal desktop computer, for small areas. In addition, future drone-mounted lidars and satellite-derived products (Stone et al., 2016) have the potential to provide high-accuracy tree height or land cover information for relatively low cost. This will enable better access to such data, and provide for the ability to assess changes over time.

7 Conclusions

- 10 This study has demonstrated a new way of introducing high-quality roughness maps derived from ALS scans of forest areas into the WAsP and WindPRO software. The steps involved can be reproduced by siting engineers with access to a reasonably powerful computer. By examining wind conditions at seven meteorological masts in a coniferous forested area in Sweden, it can be concluded that simulations using the tree height-based roughness maps resulted in a closer agreement with observational data when compared to those that used standard land-use based online sources. The lowest error was achieved when using the highest
- 15 detail maps, 20 m and 100 m resolutions, and including the displacement height via the terrain height (Fig 9). A sensitivity test found that using $z_0 = H/10$ with a displacement height provided the best results for converting tree height to roughness length when the displacement was used, but the conversion of $z_0 = H/5$ performed better without a displacement height. In addition, while roughness length maps with a high resolution benefited significantly from applying a displacement height, it did not improve the results when using maps with a coarser resolution than 100 m. The highest resolution ORA data provided the best
- 20 results, but an improvement over the land-use based map simulations was also achieved when lowering the spatial resolution to 1000 meters. It can therefore be suggested that siting engineers and practitioners of wind resource assessment in forested areas should collect appropriate site data that describe the forest height, type, and density. ~~It is furthermore recommended to apply the ORA conversion setup for heterogenous forests dominated by coniferous evergreens such as spruces and pines.~~

Code and data availability. The wind data used in this study are confidential and unfortunately not made public.

- 25 *Author contributions.* ED and JA processed the tree height and cup anemometer data. ED, PE and ND made the maps. RF performed the modelling and made the plots. RF, ED, ND, PE and JA wrote the paper.

Competing interests. Rogier Floors, Neil Davis and Ebba Dellwik work at DTU Wind Energy, where WASP is maintained, developed and sold.

Acknowledgements. For financial support we thank the New European Wind Atlas project (The European Commission funded, FP7-ENERGY.2013.10.1.2) and the InnoWind project (Grant Number 6172-00004B), funded by the Danish Innovation Foundation. JA acknowledges StandUp for Wind, a part of the StandUp for Energy strategic research framework.→

References

- Arnqvist, J., Segalini, A., Dellwik, E., and Bergström, H.: Wind Statistics from a Forested Landscape, *Boundary-Layer Meteorology*, 156, 53–71, doi:10.1007/s10546-015-0016-x, <http://link.springer.com/10.1007/s10546-015-0016-x>, 2015.
- Bontemps, S., Defourny, P., Bogaert, E. V., Kalogirou, V., and Perez, J. R.: GLOBCOVER 2009 Products Description and Validation Report, 5 *ESA Bulletin*, 136, 53, doi:10013/epic.39884.d016, 2011.
- Boudreault, L.-É., Bechmann, A., Tarvainen, L., Klemetsson, L., Shendryk, I., and Dellwik, E.: A LiDAR method of canopy structure retrieval for wind modeling of heterogeneous forests, *Agricultural and Forest Meteorology*, 201, 86–97, doi:10.1016/j.agrformet.2014.10.014, <http://linkinghub.elsevier.com/retrieve/pii/S0168192314002652>, 2015.
- Boudreault, L.-É., Dupont, S., Bechmann, A., and Dellwik, E.: How Forest Inhomogeneities Affect the Edge Flow, *Boundary-Layer Meteorology*, 162, 375–400, doi:10.1007/s10546-016-0202-5, <http://link.springer.com/10.1007/s10546-016-0202-5>, 2017.
- Bredesen, R. E., Cattin, R., Clausen, N.-E., Davis, N., Jordaens, P. J., Khadiri-Yazami, Z., Klintström, R., Krenn, A., Lehtomäki, V., Ronsten, G., Wadham-Gagnon, M., and Wickman, H.: IEA Wind TCP Recommended Practice 13 2nd Edition: Wind Energy in Cold Climates, Tech. rep., International Energy Agency, <https://community.ieawind.org/HigherLogic/System/DownloadDocumentFile.ashx?DocumentFileKey=8c9d6075-cf94-ffac-ff9d-6ca9b6601881{%&}forceDialog=0>, 2017.
- 15 Businger, J. A., Wyngaard, J. C., Izumi, Y., and Bradley, E. F.: Flux-Profile Relationships in the Atmospheric Surface Layer, *J. Atmos. Sci.*, 28, 181–189, doi:10.1175/1520-0469(1971)028<0181:FPRITA>2.0.CO;2, [http://journals.ametsoc.org/doi/abs/10.1175/1520-0469\(1971\)028{% }3C0181:FPRITA{% }3E2.0.CO;2](http://journals.ametsoc.org/doi/abs/10.1175/1520-0469(1971)028{% }3C0181:FPRITA{% }3E2.0.CO;2)<http://journals.ametsoc.org/doi/abs/10.1175/1520-0469{% }281971{% }29028{% }3C0181{% }3AFPRITA{% }3E2.0.CO{% }3B2>, 1971.
- Carroll, M., Townshend, J., Hansen, M., DiMiceli, C., Sohlberg, R., and Wurster, K.: MODIS Vegetative Cover Conversion and Vegetation 20 Continuous Fields, in: *Land Remote Sensing and Global Environmental Change*, edited by B., R., Justice, C., and Abrams, M., pp. 725–745, Springer, New York, NY, doi:10.1007/978-1-4419-6749-7_32, http://link.springer.com/10.1007/978-1-4419-6749-7_{ }32, 2010.
- Clark, M. L., Clark, D. B., and Roberts, D. A.: Small-footprint lidar estimation of sub-canopy elevation and tree height in a tropical rain forest landscape, *Remote Sensing of Environment*, 91, 68–89, doi:10.1016/j.rse.2004.02.008, <http://linkinghub.elsevier.com/retrieve/pii/S0034425704000719>, 2004.
- 25 Crockford, A. and Hui, S.-y.: Wind Profiles and Forests: Validation of Wind Resource Assessment Methodologies Including the Effects of Forests, Tech. rep., DTU, Lyngby, Denmark, 2007.
- Dellwik, E. and Jensen, N. O.: Internal equilibrium layer growth over forest, *Theoretical and Applied Climatology*, 66, 173–184, 2000.
- Dellwik, E. and Jensen, N. O.: Flux-profile relationships over a fetch limited beech forest, *Boundary-Layer Meteorology*, 115, 179–204, 2005.
- Dellwik, E., Landberg, L., and Jensen, N. O.: WASP in the Forest, *Wind Energy*, 9, 211–218, doi:10.1002/we.155, <http://doi.wiley.com/10.1002/we.155>, 2006.
- 30 Dellwik, E., Bingöl, F., and Mann, J.: Flow distortion at a dense forest edge, *Quarterly Journal of the Royal Meteorological Society*, 140, 676–686, doi:10.1002/qj.2155, 2014.
- DiMiceli, C., Carroll, M., Sohlberg, R., Huang, C., Hansen, M., and Townshend, J.: Vegetation Continuous Fields MOD44B, <http://glcf.umd.edu/data/vcf/>, 2011.
- 35 EEA: CLC2006 technical guidelines, Tech. Rep. 17/2007, European Environmental Agency, Copenhagen, Denmark, doi:10.2800/12134, http://www.eea.europa.eu/publications/technical_{ }report_{ }2007_{ }17, 2007.

- Enevoldsen, P.: Onshore wind energy in Northern European forests: Reviewing the risks, *Renewable and Sustainable Energy Reviews*, 60, 1251–1262, doi:10.1016/j.rser.2016.02.027, <http://linkinghub.elsevier.com/retrieve/pii/S1364032116002355>, 2016.
- Enevoldsen, P.: *Managing the Risks of Wind Farms in Forested Areas : Design Principles for Northern Europe.*, Phd thesis, Aarhus University, 2017.
- 5 Enevoldsen, P. and Valentine, S. V.: Do onshore and offshore wind farm development patterns differ?, *Energy for Sustainable Development*, 35, 41–51, doi:10.1016/j.esd.2016.10.002, <http://linkinghub.elsevier.com/retrieve/pii/S0973082616308146>, 2016.
- Floors, R., Gryning, S.-E., Pena Diaz, A., and Batchvarova, E.: Analysis of diabatic flow modification in the internal boundary layer, *Meteorologische Zeitschrift*, 20, 649–659, doi:10.1127/0941-2948/2011/0290, 2011.
- for Photogrammetry & Remote Sensing, A. S.: *Las Specification Version 1.3 — R11*, Tech. rep., American Society for Photogrammetry & Remote Sensing, 2010.
- 10 Garrat, J. R.: *The atmospheric boundary layer*, Cambridge University Press, 1992.
- Hansen, M. C., Defries, R., Townshend, J. R. G., and Sohlberg, R.: Global land cover classification at 1 km spatial resolution using a classification tree approach, *International Journal of Remote Sensing*, 21, 1331–1364, doi:10.1080/014311600210209, <http://www.tandfonline.com/doi/abs/10.1080/014311600210209>, 2000.
- 15 Hasager, C. B. and Jensen, N. O.: Surface-flux aggregation in heterogeneous terrain, *Quarterly Journal of the Royal Meteorological Society*, 125, 2075–2102, doi:10.1002/qj.49712555808, 1999.
- Hicks, B., Hyson, P., and Moore, J.: A study of eddy fluxes over a forest, *Journal of Applied Meteorology*, 14, 58–66, 1975.
- Jackson, P. S.: On the displacement height in the logarithmic velocity profile, *Journal of Fluid Mechanics*, 111, 15, doi:10.1017/S0022112081002279, <http://www.journals.cambridge.org/abstract{ }S0022112081002279>, 1981.
- 20 Kellndorfer, J., Walker, W., Pierce, L., Dobson, C., Fites, J. A., Hunsaker, C., Vona, J., and Clutter, M.: Vegetation height estimation from Shuttle Radar Topography Mission and National Elevation Datasets, *Remote Sensing of Environment*, 93, 339–358, doi:10.1016/j.rse.2004.07.017, 2004.
- Kelly, M. and Jørgensen, H. E.: Statistical characterization of roughness uncertainty and impact on wind resource estimation, *Wind Energy Science*, 2, 189–209, doi:10.5194/wes-2-189-2017, <https://www.wind-energ-sci.net/2/189/2017/>, 2017.
- 25 Kelly, M. and Troen, I.: Probabilistic stability and ‘tall’ wind profiles: theory and method for use in wind resource assessment, *Wind Energy*, 19, 227–241, doi:10.1002/we.1829, <http://doi.wiley.com/10.1002/we.1829>, 2016.
- Kelly, M., Troen, I., and Jørgensen, H. E.: Weibull-k Revisited: "Tall" Profiles and Height Variation of Wind Statistics, *Boundary-Layer Meteorology*, 152, 107–124, doi:10.1007/s10546-014-9915-5, <http://link.springer.com/10.1007/s10546-014-9915-5>, 2014.
- Lantmäteriet: Tech. rep., Lantmäteriet, Sweden, https://www.lantmateriet.se/globalassets/kartor-och-geografisk-information/hojddata/produktbeskrivningar/eng/lidar_data.pdf, 2016.
- 30 Lopes, A. S., Palma, J. M. L. M., and Piomelli, U.: On the Determination of Effective Aerodynamic Roughness of Surfaces with Vegetation Patches, *Boundary-Layer Meteorology*, 156, 113–130, doi:10.1007/s10546-015-0022-z, <http://dx.doi.org/10.1007/s10546-015-0022-z>, 2015.
- Molder, M., Lindroth, A., and Grelle, A.: Experimental determination of the roughness length for temperature over a field of tallgrass in central Sweden, *Geografiska Annaler*, 81A, 87–100, 1999.
- 35 Mortensen, N., Davis, N., Badger, J., and Hahmann, A.: *Global Wind Atlas - validation and uncertainty*, http://orbit.dtu.dk/files/132511681/Global_Wind_Atlas_validation_DTU_Wind_Energy.pdf, windEurope Resource Assessment Workshop 2017, Edinburgh, United Kingdom, 2017-03-16., 2017.

- Mortensen, N. G.: Wind resource assessment using the WASP software, Technical University of Denmark, Roskilde, Denmark, 2016.
- Nilsson, M., Nordkvist, K., Jonzén, J., Lindgren, N., Axensten, P., Wallerman, J., Egberth, M., Larsson, S., Nilsson, L., Eriksson, J., and Olsson, H.: A nationwide forest attribute map of Sweden predicted using airborne laser scanning data and field data from the National Forest Inventory, *Remote Sensing of Environment*, 194, 447–454, doi:10.1016/j.rse.2016.10.022, <http://dx.doi.org/10.1016/j.rse.2016.10.022><http://linkinghub.elsevier.com/retrieve/pii/S0034425716303947>, 2017.
- 5 022
- Pedersen, T. F.: Characterisation and Classification of RISØP2546 Cup Anemometer, Tech. rep., Ris{ø} National Laboratory, Roskilde, Denmark, 2004.
- Pindea, N., Jorba, O., Jorge, J., and Baldasano: Using NOAA-AVHRR and SPOT-VGT data to estimate surface parameters : application to a mesoscale meteorological model, 1st International Symposium on Recent Advances in Quantitative Remote Sensing, 1161, 16–20, doi:10.1080/0143116031000115201, 2002.
- 10 doi:10.1080/0143116031000115201, 2002.
- Poëtte, C., Gardiner, B., Dupont, S., Harman, I., Böhm, M., Finnigan, J., Hughes, D., and Brunet, Y.: The Impact of Landscape Fragmentation on Atmospheric Flow: A Wind-Tunnel Study, *Boundary-Layer Meteorology*, 163, 393–421, doi:10.1007/s10546-017-0238-1, 2017.
- Raupach, M. R.: Simplified expressions for vegetation roughness length and zero-plane displacement as functions of canopy height and area index, *Boundary-Layer Meteorology*, 71, 211–216, doi:10.1007/BF00709229, 1994.
- 15 Sempreviva, A. M., Larsen, S. E., Mortensen, N. G., and Troen, I.: Response of neutral boundary layers to changes of roughness, *Boundary-Layer Meteorol.*, 50, 205–225, doi:10.1007/BF00120525, <http://link.springer.com/10.1007/BF00120525>, 1990.
- Stone, C., Webster, M., Osborn, J., and Iqbal, I.: Alternatives to LiDAR-derived canopy height models for softwood plantations: a review and example using photogrammetry, *Australian Forestry*, 79, 271–282, doi:10.1080/00049158.2016.1241134, <http://dx.doi.org/10.1080/00049158.2016.1241134>, 2016.
- 20 Taylor, P. A.: Comments and further analysis on effective roughness lengths for use in numerical three-dimensional models, *Boundary-Layer Meteorology*, 39, 403–418, doi:10.1007/BF00125144, <http://link.springer.com/10.1007/BF00125144>, 1987.
- Thom, A. S.: Momentum absorption by vegetation, *Quarterly Journal of the Royal Meteorological Society*, 97, 414–428, doi:10.1002/qj.49709741404, 1971.
- Troen, I.: A high resolution spectral model for flow in complex terrain, pp. 417–420, American Meteorological Society, United States, 1990.
- 25 Troen, I. and De Baas, A.: A Spectral Diagnostic Model for Wind Flow Simulation in Complex Terrain, in: EWEC’86. Proceedings. Vol. 1, edited by Palz, W. and Sesto, E., pp. 243–249, A. Raguzzi, 1987.
- Troen, I. and Petersen, E. L.: European Wind Atlas, Risø National Laboratory, Roskilde, Denmark, 1989.