

Reply to Reviewers

We thank the reviewers for their detailed analysis and constructive inputs. A list of point-by-point replies to the reviewers' comments is reported in the following.

Reviewer 1

- Reviewer:** *This manuscript deals with LES simulations of a down-scaled wind turbine model, and their assessment against wind tunnel data. My main comment is that this manuscript reads more as a technical report rather than a scientific paper. Majority of the text is devoted to technical details of the LES that often are not novel and already well established in the scientific community.*

Authors: The novelty of this paper is in the comparison of simulation results with scaled experimental data in the context of wake control methods. The following table reports all relevant papers that we were able to locate in the literature, dealing with the three aspects of simulation models, experimental results and wake control:

Paper title	Publication year	Scaled or full scale	# of turbines	Experimental measurements (none, hotwire, PIV, LiDAR)	Wake control	Controller in the loop
Present paper: A Large-Eddy Simulation Approach for Wind Turbine Wakes and its Verification with Wind Tunnel Measurements	-	Scaled	1	Yes	Yes	Yes
Large-eddy simulation of atmospheric boundary layer flow through a Wind Farm Sited on Topography	2017	Full	1	Yes	No	No
Self-similarity and flow characteristics of vertical-axis wind turbine wakes: an LES study	2017	Scaled & Full	1	Yes	No	No
Evaluation of layout and atmospheric stability effects in wind farms using large-eddy simulation	2017	Full	48	No	No	No
Modelling of wind turbine wake using large eddy simulation	2017	Scaled	1	Yes (only power)	No	No
Wake flow in a wind farm during a diurnal cycle	2016	Full	18	No	No	No
Wind plant power optimization through yaw control using a parametric model for wake effects - a CFD simulation study	2016	Full	6	No	Yes	Yes
Large eddy simulations of the flow past wind turbines: actuator line and disk modeling	2015	Full	1	Yes	No	No
Simulation comparison of wake mitigation control strategies for a two-turbine case	2015	Full	2	No	Yes	Yes
Simulation of wind turbine wakes using the actuator line technique	2015	Scaled	1	Yes	No	No
Large-eddy simulations of the Lillgrund wind farm	2015	Full	48	Yes	No	No
Evaluating techniques for redirecting turbine wakes using SOWFA	2014	Full	1	No	Yes	Yes
A numerical study of the effects of wind direction on turbine wakes and power losses in a large wind farm	2013	Full	~80	No	No	No
Large eddy simulation of the wind turbine wake characteristics in the numerical wind tunnel model	2013	Scaled	1	Yes	No	No
A Large-Eddy Simulation of Wind-Plant Aerodynamics	2012	Full	37	Yes (only power)	No	Yes
Large-eddy simulation of a very large wind farm in a stable atmospheric boundary layer	2011	Full	2	Yes	No	No
Large-eddy simulation of atmospheric boundary layer flow through wind turbines and wind farms	2011	Scaled & Full	1	Yes	No	No
Large-eddy simulation of wind-turbine wakes: evaluation of turbine parametrisations	2011	Scaled	1	Yes	No	No
Effects of thermal stability and incoming boundary layer flow characteristics on wind-turbine wakes: a wind-tunnel study	2010	Scaled	1	Yes	No	No
Application of a LES technique to characterize the wake deflection of a wind turbine in yaw	2010	Scaled	1	Yes	Yes	No

By looking at the table, it appears that papers addressing numerical simulations for wake control do not present experimental validations, while papers that validate their numerical results with experiments do not consider wake control. We believe that this table shows that our contribution has novel aspects that deserve publication, as it presents for the first time a validation (although a partial

one, as better explained in our reply to question 2) of numerical simulations for wake manipulation. The introduction has now been modified to better explain the focus and novelty of the paper. This was also reflected in a new title, which we think better describes the actual content and contribution of the paper.

We agree with this reviewer (as well as with the second reviewer, who has a similar remark) that too much text has been devoted to technical details of LES. This issue was addressed by removing unnecessary text, whenever the same information can be found elsewhere in the literature. We have also tried to streamline the presentation, and we have greatly simplified the organization of the paper into section, sub-sections and sub-subsections. We think that this new version has a much improved readability.

2. **Reviewer:** *In my opinion, if the focus of the paper is proposing new capabilities for an LES solver for wind turbine wake simulations, then these potential novelties should be highlighted already from the abstract. Furthermore, for each control capability, assessment against wind tunnel data for one or few conditions might not be enough to assess the accuracy of the model. Maybe, the work can be extended by detecting flow features that were not easily and well detected through the wind tunnel experiments and now better singled out through the LES simulations.*

Authors: As explained in the reply to the previous question, the focus of this paper is actually to use an existing LES formulation -albeit with some small but important modifications- and demonstrate its accuracy with respect to a unique set of experimental observations. This fact has now been better explained in the revised version of the introduction.

It is true that a detailed validation of the procedures would probably require an even more extensive data set. We also agree that CFD can be used to complement an experimental data set, and can help explain complex features of the flow. We are indeed finishing another paper where we use CFD to explain certain characteristics of deflected wakes that we have observed in our wind tunnel experiments. However, any of these discussions would considerably lengthen the paper. We believe that the paper in its present form -now that it has an improved introduction- achieves a clear and focused goal: providing a first evidence on the accuracy of LES methods in predicting the detailed behavior of wakes that have been “manipulated” for control purposes. This contribution appears to be novel, as the current literature has not addressed this same problem. We believe that adding now extra material, as suggested by the reviewer, would not only lengthen the paper, but would also dilute its message.

Reviewer 2

1. **Reviewer:** *The paper is too long and there are many unnecessary details about the simulations that do not need to be there. Also, the authors missed many references in the introduction, although some of them were cited later during the discussion of the results. The authors should collapse many of the sections and instead of explaining all the details about linear solver, etc., they should just cite the appropriate references. Many of the details are not relevant to the findings in the paper.*

Authors: Many unnecessary details have now been removed.

2. **Reviewer:** *The authors conclude that the main differences in power and thrust between experiment and simulations come from the blade polars. However, it looks more like the differences are coming from turbine parametrization, such as epsilon, integral sampling, etc.*

Authors: We have carefully investigated the possible sources of error, including the choice of epsilon and of the sampling method. Based on our results, we believe that the differences are caused by the polars. Indeed, one can tune epsilon to match the experimental results for each value of the curtailment factor. There is, however, not a single epsilon that is able to accommodate the

investigated range of curtailments. On the other hand, keeping epsilon fixed, one can observe that the errors in power and thrust grow as the extent of power curtailment increases. In our opinion, this means that the slopes of the lift and drag coefficients with respect to the angle of attack are not calibrated well. We have updated the text to explain these facts, and better support our conclusions.

3. **Reviewer:** *In the introduction, when talking about ALM, the authors are missing some references. Please cite the original reference of the ALM (Sorensen and Shen 2002). There are good guidelines in the literature for choosing the appropriate tuning parameters for the ALM, but they require very fine grid resolutions (Jha et al JSEE 2014, Martinez et al WE 2017, etc). Also, the effect of nacelle and tower has been studied by many (Churchfield et al AIAA 2015, Santoni et al. WE 2017, Stevens et al, RE 2018, Yang and Sotiropoulos WE 2018, etc).*

Authors: The mentioned papers were cited and included in the list of references.

4. **Reviewer:** *In the section Sub-grid scale model, there are no references to the work of others. The effect of SGS model and Smagorinsky coefficient on wind turbine wakes has been studied before (Sarlak et al RE 2015, Martinez et al. JRSE 2018, etc).*

Authors: The work of Sarlak and Martinez has been cited and their conclusions are well in line with ours, as noted in the paper.

5. **Reviewer:** *The section “Numerical discretization and solution of the resulting linear systems” seems to give too much information and not all of it is necessary. This section should be cleaned up.*

Authors: This part has been drastically reduced.

6. **Reviewer:** *In the section “Computational mesh” there is a complicated explanation about wall model and y plus. I believe this explanation is not needed and the authors can just mention that a wall model is used.*

Authors: This part was shortened, to accommodate the reviewer’s comment.

7. **Reviewer:** *Figure 2: Why is the velocity not symmetric about $y=0$? “Baseline simulation and parameter tuning” It is not clear how the optimal parameters were chosen. Do these values agree with the optimal values found in the literature? Please add this to the discussion*

Authors: The horizontal velocity profile is slightly unsymmetrical because of the not exact uniformity of the flow in the tunnel. This is due to the 16 fans of the tunnel (in two rows of eight side-by-side fans), to stiffening transects upstream of the chamber inlet, and due to the turbulence-generating spires. These explanations have been added to the text of the modified manuscript.

8. **Reviewer:** *Figure 5: Please move the legend outside of the figures. It would be best to just show the span-wise profiles in this figure (y/D). If it is needed, another figure showing the wall normal direction (z/D) can be added.*

Authors: The legends do not cover the curves. Moving them outside of the figures would further increase their size. For these reasons, we would like to keep the figures as they are. Similarly, the addition of a separate figure for the wall normal velocity component would only increase the length of the paper, and does not appear to us to be strictly necessary.

9. **Reviewer:** *Figure 6: Can you make the plots wider, such that differences are shown better?*

Authors: As required, the plots were made wider. Additionally, the 100% and 92.5% cases were merged together in a single plot.

10. **Reviewer:** *“Power derating” The authors conclude that the difference in polars is causing the differences in power. It seems unlikely that the polars would change much over the small Reynolds number variations seen by the blade. It seems that these differences are more due to the turbine parametrizations (epsilon, integral sampling, etc).*

Authors: The change of polars with respect to the Reynolds number is small, but not completely negligible, given the very low Reynolds regime at which these airfoils operate. However, the most important factor in the mismatch is the rate of change of lift and drag with angle of attack, which considerably affects the results when the machine is derated (and, therefore, when the angle of attack at the blade sections changes). As explained when answering to question 2, tuning other parameters can only match one operating condition, but not all derating conditions (unless one is willing to accept different values of epsilon for different deratings, which does not seem to be a satisfactory solution to us). The text has been improved to better explain this point.

In addition to the changes explained above, we have taken this opportunity to modify the text where necessary and improve the quality of some figures. A revised version of the manuscript is attached to the present reply. The main changes to the text are highlighted in blue. Please notice however that many other changes were made to the text in addition to the blue highlights, including the elimination of substantial parts of the previous descriptions of the LES solver. Thanks to the reviewers’ input, we believe that the paper has been greatly improved, and results in a clearer message and more informative and easier reading than in the original submission.

Best regards.

The authors

Wake behavior and control: comparison of LES simulations and wind tunnel measurements

Jiangang Wang, Chengyu Wang, Filippo Campagnolo, and Carlo L. Bottasso
Wind Energy Institute, Technische Universität München, Garching bei München, Germany
Correspondence to: C.L. Bottasso (carlo.bottasso@tum.de)

Abstract.

This paper applies a large-eddy actuator line approach to the simulation of wind turbine wakes. In addition to normal operating conditions, a specific focus of the paper is on wake manipulation, which is performed here by derating, yaw misalignment and cyclic pitching of the blades. With the purpose of clarifying the ability of LES methods in representing wind-farm-control relevant conditions, numerical simulations are compared to experimental observations obtained in a boundary layer wind tunnel with scaled wind turbine models. Results indicate a good overall matching of simulations with experiments. Low turbulence test cases appear to be more challenging than moderate and high turbulence ones, due to the need for denser grids to limit numerical diffusion and accurately resolve tip-shed vortices in the near wake region.

1 Introduction

Wind plants are collections of wind turbines, often operating in close proximity of one another. Several complex phenomena take place within a wind farm. First, there is an interaction between the atmospheric boundary layer and the whole wind farm, caused by the smaller scale interaction between the atmospheric flow and each individual wind turbine. Second, within the power plant itself, there is an interaction among upstream and downstream wind turbines through their wakes. In turn, the wake themselves interact with the atmospheric flow and other wakes, interactions that play a central role in determining the overall behavior of the plant. Wakes produced by upstream wind turbines may have a profound influence on the performance of downstream operating machines. In fact, waked turbines experience lower power output and increased loading, compared to clean isolated conditions. A thorough understanding of these complex phenomena is clearly indispensable for optimizing the layout and operation of wind plants. However, even an optimal layout will still incur in wake interactions, at least in some wind and environmental conditions. To mitigate these effects, a number of control strategies are currently being investigated to optimize the operation of wind power plants, including power derating, wake deflection and enhanced wake recovery (Fleming et al., 2014; Knudsen et al., 2015).

The current research in this field is very active, covering a broad spectrum that ranges from high-fidelity numerical simulations to reduced order models, from scaled experiments in the wind tunnel to direct measurements in the field, all the way to control methods and various supporting technologies. Among the many studies reported in the literature, meteorological and performance data collected at the Horns Rev and Middelgrunden offshore wind farms has been systematically investigated (Barthelmie et al., 2007; Hansen et al., 2012). Moreover, scaled wind farm experiments were conducted in wind tunnels to study wake deficit and its impact on downstream wind turbines (Medici and Alfredsson, 2006; Chamorro and Porté-Agel, 2009; Bartl et al., 2012). These test campaigns have been actively used to validate several engineering and CFD wake models, in terms of power capture, velocity profiles and higher order flow quantities (Barthelmie et al., 2006; Kennedy et al., 2011; Porté-Agel et al., 2011; Gaumond et al., 2014). Wake models can be classified on the basis of their complexity and fidelity to reality. The steady-state kinematic wake model of Jensen (1983) was among the first proposed analytical formulations, later extended by Jiménez et al. (2010) to cover the case of yaw misalignment. Larsen et al. (2007) derived a more sophisticated dynamic wake meandering model. Higher-fidelity models have been developed by using computational fluid dynamics (CFD). For example, Carcangiu (2008) used the Reynolds-averaged Navier Stokes (RANS) equations to simulate the near wake behavior, while Stovall et al. (2010) simulated wind turbine clusters and compared RANS to the higher-fidelity large-eddy simulation (LES) approach. Results indicated that RANS is not sufficiently accurate, as it typically overestimates diffusion.

With the significant increase in computational performance of the recent years (thanks to advancements in hardware, software and algorithms), LES has gained an increasing adoption by the wind farm research community (Calaf et al., 2010; Porté-Agel et al., 2011; Churchfield et al., 2012). In fact, LES has the ability to better resolve the relevant flow features, leading to an improved insight on flow characteristics within a wind farm. In addition, several researchers (Jiménez et al., 2010; Fleming et al., 2014; Gebraad et al., 2016) have been using LES to investigate wake control strategies.

Although LES is an approach based on first principles, it is still not completely tuning-free. For example, when used in conjunction with an actuator line method (ALM) to represent wind turbine blades, there is a need for properly tuning the procedure used for mapping lifting line aerodynamic forces onto the volumetric grid (Sorensen and Shen, 2002; Martinez et al., 2012). In addition to several algorithmic details, other important characteristics of the simulation are represented by the grid (Jha et al., 2014; Martínez-Tossas et al., 2017) and features of the model, including the presence of nacelle and tower. The effects of the tower have been investigated with different versions of the ALM by Churchfield et al. (2015) and Stevens et al. (2018), with an immersed boundary method by Santoni et al. (2017), and with an actuator surface approach by Yang and Sotiropoulos (2018).

In general, most of the published research focuses on the use of CFD to study wake behavior and control strategies, but pay relatively less attention to the problem of ensuring the fidelity of

such simulations to reality. In fact, a comprehensive validation of LES methods for wind turbine wakes is still missing. This is clearly not due to a lack of attention to this problem, but rather to a lack of comprehensive high-quality data sets. Unfortunately, experiments in the field are not without hurdles: in fact, wind conditions cannot be controlled, and measurements at full scale are not always possible nor complete. In this sense, testing at scale in a wind tunnel is gaining attention as a means to perform experiments with a much more precise knowledge and control of the testing conditions.

As a contribution towards a better understanding of the capabilities and limits of LES for modeling wind turbine wakes, this paper applies a recently developed computational framework to the simulation of scaled wind turbines. These models were operated in a large boundary layer wind tunnel in a variety of conditions. A complete LES-based digital model of the experiments is developed in this work, including a model of the wind tunnel and of the passive generation of sheared and turbulent flows. The paper specifically focuses on operating conditions that are relevant to wind farm control. In fact, the existing literature either uses LES to study wind farm control conditions without comparing simulations against experiments (Jiménez et al., 2010; Fleming et al., 2014, 2015; Gebraad et al., 2016) or considers both numerical and experimental results but not in the context of wind farm control (Jiménez et al., 2010; Lu and Porté-Agel, 2011; Porté-Agel et al., 2011; Wu and Porté-Agel, 2011; Churchfield et al., 2012; Mo et al., 2013; Martínez-Tossas et al., 2015; Sørensen et al., 2015; Nilsson et al., 2015; Shamsoddin and Porté-Agel, 2017; Abkar and Dabiri, 2017; Sedaghatizadeh et al., 2018). The present paper tries to fill this gap, conducting a first preliminary study on the ability of LES to model the behavior of wakes in conditions that are relevant to wind farm control applications. This study is preliminary, in the sense that only a limited set of conditions of one single wind turbine are analyzed. Wake interactions are analyzed in Wang et al. (2017b, 2018) and in forthcoming publications. The authors believe in the need to clarify to which degree wake modeling methods are indeed able to represent farm-control-relevant conditions, this work being a first step in this direction —albeit limited in scope.

The present LES framework is characterized by some distinguishing features. First, the tuning-free immersed boundary (IB) method of Jasak and Rigler (2014) is used to model the effects caused by nacelle and tower. Second, the integral velocity sampling method (Churchfield et al., 2017) is employed, which reduces the sensitivity of the results —and especially of power— to the mapping of aerodynamic forces onto the fluid flow. Third, an ad-hoc developed approach is used for tuning the airfoil polars. In fact, given the small scale of the experimental models, their blades operate at low Reynolds numbers and are therefore designed using special low-Reynolds airfoils. Clearly, the accuracy of the airfoil polars plays an important role in the accuracy of the overall LES simulation. Rotational augmentation, manufacturing imperfections and other effects may influence the behavior of the blade airfoils and alter it with respect to their nominal characteristics, which are typically obtained in 2D dedicated wind tunnel tests. To address this issue, airfoil polars are tuned here by means of a specific identification method (Bottasso et al., 2014), which makes use of dedicated

experimental measurements conducted with the scaled turbine (i.e., not with the single airfoils, but with the rotor on which the airfoils are used). Indeed, the airfoil Reynolds varies depending on the operating condition of the turbine. By accounting for the effects of Reynolds on the airfoil polars, which are particularly relevant at the low Reynolds numbers at which the scaled models operate, a better accuracy in the results can be achieved.

The problem of computational cost is addressed in a companion paper (Wang et al., 2018), where a scale adaptive simulation (SAS) approach is used to model the unresolved scales, resulting in a LES-like behavior at a cost similar to RANS, with a roughly similar accuracy.

The paper is organized according to the following plan. The numerical method is described in Sect. 2. The computational setup is reported in Sect. 3, where a precursor simulation —mimicking the process that takes place in the wind tunnel— is used for the passive generation of the turbulent flow, whose resulting outflow is used as inlet for subsequent wind turbine wake simulations (called successor simulations). The experimental setup is presented in Sect. 4, including a short description of the wind tunnel, of the scaled wind turbine model and of the measurement equipment. Results are discussed in Sect. 5. At first, an isolated flow-aligned wind turbine is considered, and the LES framework is tuned to match experimental measurements obtained in this baseline case. Next, the three wake manipulation strategies of derating, yaw misalignment and cyclic pitch control are considered. Here again low-turbulence experimental results are compared with simulations, without any additional tuning with respect to the parameters chosen in the baseline case. Finally, a moderate turbulent condition is considered, again without any additional tuning. Conclusions are drawn in Sect. 6.

2 Numerical simulation model

The present LES framework is developed within *SOWFA* (Churchfield and Lee, 2012; Fleming et al., 2013), a simulation tool based on a standard incompressible solver in the OpenFOAM repository.

The rotor is modelled in terms of actuator lines, by direct coupling with the aeroservoelastic simulator *FAST* (Jonkman and Buhl Jr, 2005). The integral approach of Churchfield et al. (2017) is used to compute the flow conditions at each station along an actuator line, and to project the calculated aerodynamic forces back onto the fluid domain using a single Gaussian width value. Aerodynamic forces at each station are computed by interpolating pre-computed lift and drag aerodynamic coefficients, which are stored in look-up tables parameterized in terms of angle of attack and Reynolds number. Depending on the problem, the wind turbine model is either controlled in closed-loop by a pitch and torque controller, based on the implementation described in Bottasso et al. (2014), or simply by using experimentally measured values of pitch and rotor speed.

Both the Constant Smagorinsky (CS) (Deardorff, 1970) and the Lagrangian dynamic Smagorinsky (LDS) (Meneveau et al., 1996) models are implemented. However, results of extensive numerical experiments indicate that, for the present application, the performance of LDS is very similar to CS,

as shown later on in this work and already observed by Sarlak et al. (2015); Martínez-Tossas et al. (2018) in turbulent conditions.

The IB formulation of Lai and Peskin (2000); Mittal and Iaccarino (2005); Jasak and Rigler (2014) is used to model the wind turbine nacelle and tower, whose effects on the flow proved to be quite significant—at least in the near wake region—and should therefore not be neglected (Wang et al., 2017b). The IB method is employed to avoid the use of surface conforming meshes to represent the shape of such bodies (Mittal and Iaccarino, 2005). The present IB approach, based on a discrete forcing method, uses a direct imposition of the boundary conditions (Uhlmann, 2005), this way preserving the sharpness of the body shape. Boundary conditions and wall models can be directly imposed on the IB surfaces with this approach, yielding good solution quality for high Reynolds viscous flows (Bandringa, 2010). Details of the formulation are reported in Wang et al. (2017b).

ALM-modeled blades and IB-modeled nacelle and tower introduce local numerical dispersion and diffusion, which affect simulation stability and accuracy (Holzmann, 2016; Moukalled et al., 2016). The Gamma-bounded high-resolution interpolation method is used here to address this issue (Jasak et al., 1999). The Gamma scheme is parameterized in terms of β_m , a tunable constant that allows one to control the level of upwinding. In general, a larger value of β_m implies a lower dispersion and a higher diffusion (i.e. more upwinding), and vice versa. The value $\beta_m = 0.45$ is employed in the near wake region to stabilize the simulation, since actuator line body forces and immersed boundary possibly generate numerical dispersion, and $\beta_m = 0.05$ is used in the far wake to minimize numerical diffusion while retaining a minimum amount of necessary upwinding.

Table 1 shows the linear solvers used for the precursor and the wind turbine/wake simulations. The precursor problem has slightly less regular grids, because of the need to mesh the large turbulence generators (termed spires) placed at the tunnel inlet, which requires a slightly different setup of the linear solvers. The PISO time marching algorithm recursively solves (or corrects) the pressure flux equation to account for non-orthogonal grid elements (Greenshields, 2015). The number of iterations is fixed a priori and set equal to 1 and 0 for the precursor and successor simulations, respectively. Indeed, given the good quality of the grid in the latter case, non-orthogonal corrections are not indispensable, and their elimination lowers the computational cost by about 10%.

2.1 Multi-airfoil table identification

Clearly, the accuracy of the sectional aerodynamic coefficients is a crucial ingredient of the ALM formulation. A method to tune the aerodynamic polars of lifting lines was described in Bottasso et al. (2014). In a nutshell, the method works by first measuring thrust and torque on a rotor at a number of different operating conditions that cover the angles of attack and Reynolds numbers of interest. Next, these values are used to update some given baseline polars by using a maximum-likelihood criterion.

Type	Precursor simulation	Wind turbine simulation
p solver	CG	CG
p preconditioner	GAMG	GAMG
p smoother	DIC-GS	GS
No. of p corrector steps	3	3
$\tilde{\mathbf{u}}$ solver	bi-CG	bi-CG
$\tilde{\mathbf{u}}$ preconditioner	DILU	DILU
No. of NOC steps	1	0

Table 1. Linear algebraic solvers used for the precursor and the wind turbine/wake simulations (CG = conjugate gradient; GAMG = geometric-algebraic multi-grid; DIC = diagonal incomplete Cholesky; GS = Gauss-Seidel; DILU = diagonal incomplete LU factorization; NOC = non-orthogonal corrector).

Nominal values of both the lift and drag coefficients C_k (where $k = L$ or $k = D$ for lift and drag, respectively) are corrected as

$$C_k(\eta, \alpha, \text{Re}) = C_k^0(\eta, \alpha, \text{Re}) + \Delta_k(\eta, \alpha, \text{Re}), \quad (1)$$

where $\eta \in [0, 1]$ is a span-wise location, α the angle of attack, Re the Reynold number, C_k^0 the nominal coefficient value, and Δ_k is the unknown correction. This latter term is expressed by a linear interpolation as

$$\Delta_k(\eta, \alpha, \text{Re}) = \mathbf{n}^T(\eta, \alpha, \text{Re})\mathbf{p}_k, \quad (2)$$

where \mathbf{p}_k is the vector of unknown nodal values and $\mathbf{n}(\eta, \alpha, \text{Re})$ is the vector of assumed multi-linear shape functions. To improve the well-posedness of the problem, the polar correction terms are transformed using a singular-value decomposition, which ensures the actual observability of the tuned parameters. By this method, the corrections to the baseline lift and drag characteristics of the airfoils are recast in terms of a new set of statistically independent parameters. By analysing their associated singular values, one can retain in the identification only those parameters that are observable with a desired level of confidence (Bottasso et al., 2014).

The unknown correction terms are computed by maximizing the likelihood function of a sample of N available experimental observations. This amounts to first minimizing the following cost function

$$J = \frac{1}{2} \sum_i^N \mathbf{r}_i^T \mathbf{R}^{-1} \mathbf{r}_i, \quad (3)$$

where \mathbf{r} is the discrepancy between power and thrust coefficients computed by a blade element momentum model as implemented in the `WT-Perf` code (Buhl, 2009), and the corresponding experimentally measured quantities. The optimization is performed for a fixed covariance \mathbf{R} , by using

the gradient-based sequential quadratic programming approach. Next, the covariance is updated as $\mathbf{R} = 1/N \sum_i^N \mathbf{r}_i \mathbf{r}_i^T$, and the optimization is repeated. Iterations between minimization and covariance update are continued until convergence (Bottasso et al., 2014).

195 More than one hundred operating points were measured experimentally. The operating conditions were determined in order to cover a desired range of angles of attack and Reynolds numbers, and were obtained by operating the scaled wind turbine model at different tip-speed-ratios (TSRs) and blade pitch angles. Experiments were then grouped in terms of average blade Reynolds number, and for each group a separate identification was performed, yielding a calibrated version of the polars at
200 that specific Reynolds.

3 Computational setup

3.1 Precursor simulation

The LES-ALM numerical model was used to create a complete digital copy of the experiments, which were conducted in the $36 \text{ m} \times 13.84 \text{ m} \times 3.84 \text{ m}$ boundary layer test section of the wind
205 tunnel at Politecnico di Milano (Zasso et al., 2005; Bottasso et al., 2014).

A first simulation is used to generate the turbulent inflow (precursor) used as inlet for successive wind turbine/wake (successor) simulations. The layout of the partially overlapped precursor and successor domains is represented in Fig. 1. The precursor domain has a size of $30 \text{ m} \times 6.92 \text{ m} \times 3.84 \text{ m}$. The reduced width of the domain with respect to the actual tunnel size is chosen to limit the computational cost. The turbulent inflow for the successor simulation is sampled 19.2 m downstream of
210 the precursor inlet, as shown in the figure. The simulation mimics the passive turbulence generating system adopted in this wind tunnel (Zasso et al., 2005). A structured body-conforming mesh discretizes the volume around the turbulence-generating spires at the wind tunnel inlet, using a purely hexahedral O-grid. The average stretching ratio for the volume mesh is 1.25, while the maximum skewness is equal to 2.7, which however does not compromise the simulation stability. Mesh quality
215 is limited by the sharp edges and abrupt surface changes of the spire geometry.

Dirichlet-type non-slip conditions are used for the resolved velocity vector $\tilde{\mathbf{u}}$ on the tunnel side walls and the spire surfaces. Neumann-type conditions are imposed for pressure on the same boundary surfaces, while Dirichlet-type wall conditions are employed for temperature, which is assumed
220 to be the same on all surfaces. Regarding the sub-grid scale model, Dirichlet-type surface conditions are used for the eddy viscosity μ_t on the ceiling, using a fixed value equal to $1 \times 10^{-5} \text{ m}^2/\text{s}$ on account of the negligible turbulence; a small positive non-zero value is used, because μ_t is evaluated at cell centroids and not on the wall surface. A wall model is imposed on the other surfaces including spires, left/right walls and floor to adjust wall shear stresses.

225 The inflow speed at the inlet equals 4.7 m/s, as measured in the wind tunnel, and the maximum Courant number is limited to one. The constant Smagorinsky sub-grid scale model is used, with its

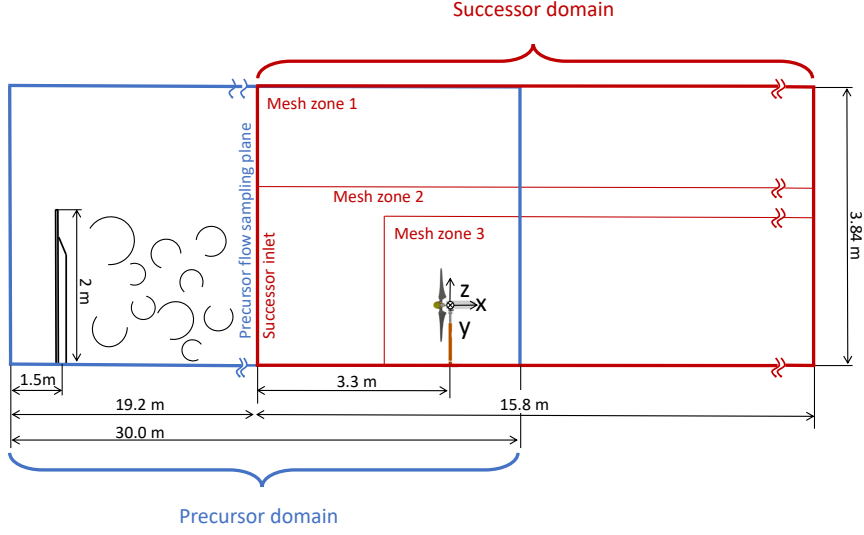


Figure 1. Layout of the partially overlapped precursor and successor computational domains.

constant parameter C_s set to 0.13. In order to reach steady-state conditions, the simulation requires about 15 s of physical time. After achieving a steady mean speed, the precursor flow is collected at a sampling plane about 3D in front of the turbines and stored, to be used as input for subsequent
 230 successor simulations.

Figure 2 shows the normalized time-averaged streamwise velocity $\langle u_x \rangle$ and turbulence intensity $\sigma/\langle u_x \rangle$ profiles measured 20.85 m downstream of the tunnel inlet, which corresponds to 1.5D upstream of the wind turbine rotor. A reference frame is located at the hub, as shown in Fig. 1 on the right. The two horizontal and vertical velocity profiles are in good agreement with the experimental
 235 data. The average velocity error $\langle \Delta u_x \rangle$ is around 1-2% for both profiles. The horizontal velocity appears to be not exactly symmetric with respect to $y=0$. This is due to the 16 fans of the tunnel (in two rows of eight side-by-side fans), to stiffening transects upstream of the chamber inlet, and to the turbulence-generating spires. This slight horizontal shear was obtained in the numerical simulation by adjusting the prescribed inflow at the precursor domain inlet. Turbulence intensity also shows a
 240 reasonable agreement, with an average error of 7% and 5% for the horizontal and vertical profiles, respectively. The experimental results for $\sigma/\langle u_x \rangle$ along the horizontal profile show an unexpected discontinuity, not observed in the simulations, which might be due to the effect of the traversing system used for holding and positioning the hot wire probes.

Figure 3 shows the experimental and simulated turbulent kinetic energy spectrum $E(f)$ and auto-
 245 correlation $r(\tau)$ at hub height, 1.5D upstream of the rotor. The LES-computed spectrum appears to be in good agreement with the experimental one. The autocorrelation is computed as:

$$r^j(\tau) = \langle (u_x^j(t) - \langle u_x^j \rangle)(u_x^j(t + \tau) - \langle u_x^j \rangle) \rangle, \quad (4)$$

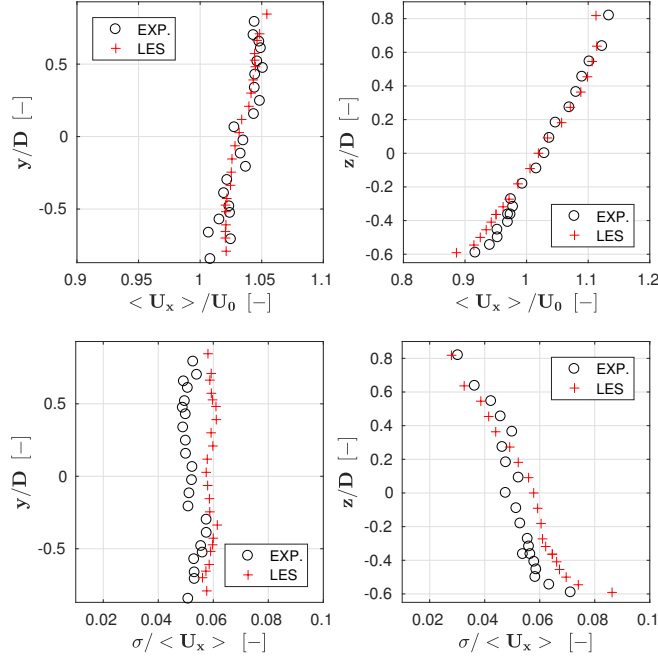


Figure 2. Normalized time-averaged streamwise velocity $\langle u_x \rangle$ (top row) and turbulence intensity $\sigma / \langle u_x \rangle$ (bottom row), 1.5D downstream of the rotor. Left column: hub-height horizontal profile; right column: hub-centered vertical profile. Red + symbols: numerical results; black o symbols: experimental measurements.

where u_x^j is the streamwise component of the velocity at spatial point j . The integral time scale (O’neill et al., 2004), defined as

$$250 \quad T_\tau^j = \int_0^\infty \frac{r^j(\tau)}{\langle u_x^{j,2} \rangle} d\tau, \quad (5)$$

is found to be 0.139 s and 0.143 s for experiment and simulation, respectively. These results indicate a good overall agreement between simulation and experiment even at small scales, with a consequent correct estimation of flow mixture, wake recovery and other relevant features of the flow.

3.2 Successor simulation

255 The computational setup for the wind turbine/wake simulation follows Wang et al. (2017a). The domain layout is shown in Fig. 1. The domain width is reduced to 3.9D, which is 3.4 times less than the actual test section width, so as to minimize the computational cost without affecting the results due to wall blockage. Notice that the precursor width is about twice the width of the successor domain, simply because the same precursor is also used for non-aligned multi-turbine configurations
 260 (not discussed here) that, having a larger frontal area, require a larger inflow. The mesh uses three zones of increasing density. Zone 1 is the base mesh, with cubic cells of 0.08 m in size, while zones 2

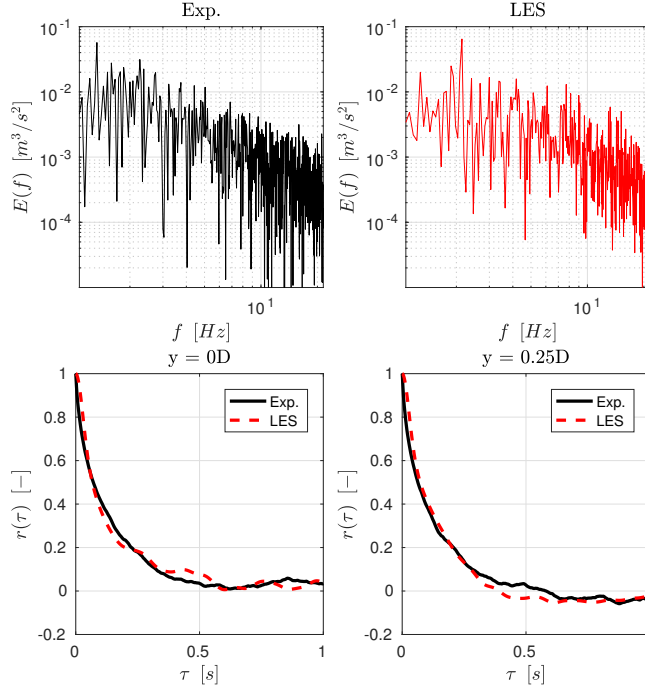


Figure 3. Turbulent kinetic energy spectrum $E(f)$ at hub height 1.5D upstream of the rotor, for the experiment (top-left, black line) and simulation (top-right, red line). Autocorrelation $r(\tau)$ at hub height 1.5D upstream of the rotor (bottom-left) and 0.25D to its left, looking downstream (bottom-right).

and 3 have cubic cells of 0.04 m and 0.01 m, respectively. Less than 1% of the total mesh is composed of polyhedral cells, while all others are cubic.

Two different flow conditions are considered in the present study. In the first case, the flow velocity is obtained from a LiDAR-scanned low turbulence ($< 2\%$) inflow condition (van Dooren et al., 2017). Measurements also accounts for a slight non-uniformity of the flow within the wind tunnel (Wang et al., 2017a). In the second case, as previously explained, the output of the passively-generated turbulent precursor simulation was instead used as inlet for the successor simulation.

The treatment of the domain walls is as follows. Dirichlet-type non-slip wall conditions for $\tilde{\mathbf{u}}$ are used for the tunnel ceiling and floor. Neumann-type conditions for pressure and temperature and mixed type conditions for $\tilde{\mathbf{u}}$ are used for the side walls, enforcing a null component of the velocity normal to the side surfaces to ensure mass conservation. The eddy viscosity μ_t is set with Neumann conditions on the left/right tunnel walls. For ceiling and floor, μ_t is set with Dirichlet conditions to the fixed value $1 \times 10^{-5} \text{ m}^2/\text{s}$ in the low turbulence case, while a wall model is used for the moderate turbulence condition.

Dirichlet-type non-slip wall conditions are used for the IB-modeled nacelle and tower in the low turbulence case. In fact, in these cases a laminar boundary layer (or, at least, a not fully-developed

turbulent boundary layer) is expected to extend over the entire IB surface due to the steadiness of the incoming flow. Despite the maximum y^+ being equal to 50 on the IB surfaces, a wall function
280 can no be used here, as it could properly model only a fully developed turbulent boundary layer. Due to the coarse grid, an overestimation of the boundary layer thickness on the IB-modeled bodies is expected, which in turn will lead to an overestimation of the blockage induced by the turbine nacelle and tower.

Slip wall IB surface conditions are used for the moderate turbulence case, in order to mitigate numerical stability issues. Although this neglects the boundary layer induced blockage and turbulence,
285 results indicate a negligible impact on the downstream wake profile. This is probably explained by the background turbulence that, by enhancing mixing, diffuses the signature of tower and nacelle on the downstream flow.

4 Experimental setup

290 Tests were performed with the G1 scaled wind turbine model, whose rotor diameter and optimal TSR are equal to 1.1 m and 8.25, respectively. The model, already used within other research projects (Campagnolo et al., 2016c, a, b), is designed to have realistic wake characteristics, with shape, deficit and recovery that are in good accordance with those of full-scale machines. The model features active individual pitch, torque and yaw control that, together with a comprehensive onboard sensorization
295 (including measures of shaft and tower loads), enables the testing of turbine and farm-level control strategies.

The flow within the wind tunnel was measured with hot-wire probes or stereo PIV. The latter technique was used to measure the flow characteristics in the near (0.56D) and far (6D) wake regions. The measurement planes cover a significant fraction of the wind turbine wake. In order to achieve a
300 higher spatial resolution of the velocity field, the measurement area was divided into several windows with small overlaps between them. A rapid scanning of the entire measurement area was achieved by the use of an automated traversing system, moving both the laser and the cameras. The measuring windows were divided into 32×32 pixel interpolation areas, which resulted in an approximately 15 mm spatial resolution. For each measuring window, 200 pairs of images were acquired (per
305 camera) without phase lock, resulting in time-averaged flow field measurements. Additional details concerning the PIV instrumentation are given in Campanardi et al. (2017).

5 Result and analysis

5.1 Baseline simulation and parameter tuning

The baseline simulation represents an isolated flow-aligned wind turbine. The machine is operated
310 in a low turbulence flow, with a rotor-averaged inflow velocity equal to 5.9 m/s, which is slightly
lower than the G1 rated speed (6.0 m/s).

This first case is used to determine the optimal values of the Smagorinsky constant C_s and of the
Gamma scheme parameter β_m . The same tuned parameters are used for all other simulations in the
rest of this work. This first test case is also used to verify the effects of the Gaussian width ϵ , which
315 is used to project aerodynamic forces from the lifting lines onto the computational grid. In fact, it
was observed that this projection may have a significant effect on the results, including rotor power
and thrust. In principle, ϵ should be set equal to 2-3 times the cell size, i.e. $2h \leq \epsilon \leq 3h$ (Martinez
et al., 2012). It was found that the dependency of the rotor aerodynamic power on ϵ is significantly
reduced if the integral velocity sampling approach is used (Churchfield et al., 2017). For instance,
320 if ϵ increases by 30%, power will increase by 13% if the traditional point-wise velocity sampling
approach is used, but only by 5% when using the integral velocity sampling method. In fact, in the
point-wise approach a variation of ϵ reshapes the Gaussian curve, in turn changing the peak value and
eventually affecting the calculated aerodynamic power, while the integral approach uses a weighted
average that mitigates the reshaping effect (Churchfield et al., 2017).

325 Using a simple trial and error approach, the three parameters ϵ , C_s and β_m (in the near wake)
were set to 0.025, 0.13 and 0.45, respectively. Given the low turbulence of the present case, the
experimentally measured rotor speed was very nearly constant, and its average value was used in the
simulation.

The rotor integral quantities of power and thrust are compared first, by time-averaging over 10 s.
330 The wind turbine power was found to be equal to 45.79 W in the experiment, and equal to 45.45 W
for LES, showing a good agreement between these two values. A slightly larger discrepancy was
obtained for the thrust, which was found to be 15.18 N and 16.05 N for experiment and simulation,
respectively. This may be explained by the fact that thrust is directly measured at the shaft in the
numerical simulation, while it is reconstructed from the tower based fore-aft bending moment in
335 the experiment. This requires estimating the contribution of nacelle and tower, which is done by a
dedicated experiment performed on the wind turbine without the blades. As a result, this indirect
calculation of the experimental thrust is affected by approximations, and it cannot be regarded as
accurate as the measurement of rotor torque (and hence of power).

Next, the characteristics of the wake are compared between PIV measurements and CS LES sim-
340 ulation. Figure 4 shows streamwise velocity contours on a plane $0.56D$ downstream of the rotor.
Measurements are missing from two areas left and right of the rotor disk where, due to the close
proximity of the measuring plane with the wind turbine, part of the nacelle (which is of a white

color) was in the background, leading to a wrong correlation between the PIV images. Apart from the two missing spots, the LES contours are similar to the PIV ones, both in terms of wake width and deficit. The wake deficit for LES is on average 1.3% higher than the experiment.

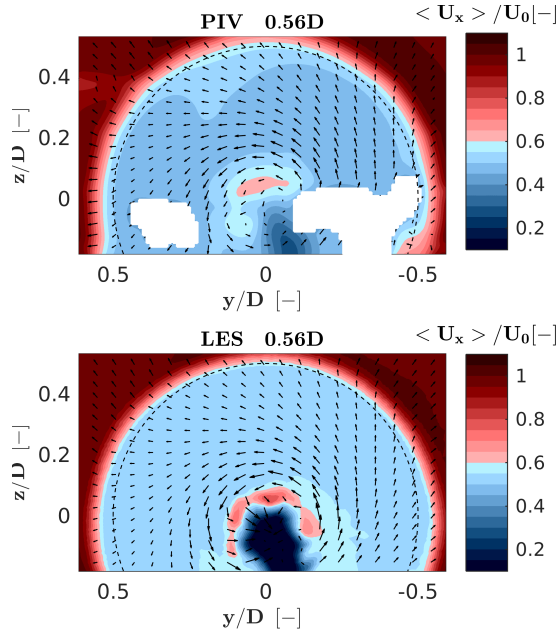


Figure 4. Streamwise velocity contours for the CS LES model and PIV experimental measurements, on a plane $0.56D$ downstream of the rotor. Black arrows indicate the cross-wind velocity component at a number of sampling points.

The figure also shows that the simulation overestimates the local wake deficit behind the nacelle and tower, as a result of the enhanced blockage effect mentioned in §3.2. Indeed, the current mesh resolution (high y^+) implies a thicker boundary layer, which in turn produces a higher blockage with a consequent larger flow separation, tower shedding and induced turbulence. This problem could be mitigated by a suitable refinement of the mesh near the IB, which however would come at the price of a significant increase in the computational cost.

Next, hot-wire probe measurements are used to compare wake profiles at $3D$, $4D$, $7D$ and $8D$ downstream positions. Figure 5 shows horizontal (top row) and vertical (central row) profiles of the normalized time-averaged velocity, as well as horizontal profiles of turbulence intensity (bottom row). The plots report results for the CS model, the LDS model, and experimental measurements. The CS case includes two sets of results, one obtained including the effects of nacelle and tower in the model, and one obtained neglecting these two components. Comparing these two curves with the experimental results clearly indicates that the near wake profile is more accurately represented when nacelle and tower are included in the model, as already noted by other authors (Santoni et al., 2017). This may be particularly true for the present scaled wind turbine, for which these two components

are relatively bigger than in full scale machines. Indeed, the sum of the frontal area of the nacelle and of the portion of the tower located within the rotor swept area A is $0.037A$, while it is $0.023A$ for the NREL 5 MW wind turbine (Jonkman et al., 2009). Although this parameter is larger for the G1, it is expected that the effects of nacelle and tower on wake evolution might not be negligible even for typical multi-MW wind turbines (Wang et al., 2017b). All other simulations reported in this work were performed including nacelle and tower in the model.

Both CS and LDS show a good agreement with the experimental curves. Indeed, the temporally and spatially averaged streamwise velocity difference $\langle \Delta u_x \rangle = (\langle u_{x,\text{LDS}} \rangle - \langle u_{x,\text{CS}} \rangle) / \langle u_{x,\text{CS}} \rangle$ between the CS and LDS models is consistently less than 1% at all downstream distances. Results indicate that the LDS model does not provide significantly more accurate results than CS, while at the same time it requires a 20% larger computational effort caused by the solution of its two extra transport equations. Moreover, turbulence intensity plots seem to indicate a slightly better match of CS to the experiments than LDS. Based on these results, all other simulations in the present paper were based on the CS model.

The rotor-averaged streamwise velocity difference between simulation (with nacelle and tower) and experiment $\langle \Delta u_x \rangle = (\langle u_{x,\text{sim}} \rangle - \langle u_{x,\text{exp}} \rangle) / \langle u_{x,\text{exp}} \rangle$ is equal to -2.7%, -1.6% and -1.3% at 3D, 4D, and 8D, respectively. The root mean square (RMS) error can be used to quantify the spatial fit between simulations and experiments, and it is defined as

$$\text{RMS}(\cdot) = \sqrt{\frac{1}{N} \sum_{j=1}^N \left(\langle (\cdot)^j_{\text{sim}} \rangle - \langle (\cdot)^j_{\text{exp}} \rangle \right)^2}, \quad (6)$$

where $\langle (\cdot)^j \rangle$ is a generic time-averaged quantity at a given spatial point j . At the various downstream distances, $\text{RMS}(u_x)$ equals 0.34 m/s, 0.33 m/s and 0.15 m/s, respectively. As expected, the matching of simulations with experimental measurements improves when moving downstream. Indeed, if rotor thrust is well predicted, flow mixture is properly resolved and numerical diffusion is suitably controlled, then the simulation results in a fully developed wake that correlates well with the experiment. The far wake profile can be approximated by the single Gaussian distribution used in some engineering wake models (Larsen et al., 2007; Renkema, 2007).

LES underestimates the rotor-averaged turbulence intensity $\sigma / \langle u_x \rangle$ by 23%, 12% and 12% at 3D, 4D, and 8D, respectively, while the rotor-averaged root mean square error $\text{RMS}(\sigma / \langle u_x \rangle)$ is 0.04, 0.02 and 0.02 at these same positions. The turbulence intensity profiles of Fig. 5 clearly show that matching is not as good as in the case of the streamwise velocity, especially in the near wake region where tip vortices are not resolved enough and tower shedding is overpredicted. Here again, the problem could be mitigated with a finer grid, which however would lead to increased computational costs.

Comparing the turbulence intensity results with and without nacelle and tower shows that there is an increased turbulence in the wake of the former case, which causes an earlier vortex breakdown and produces a higher turbulence intensity at the far wake. In turn, this generates a faster wake

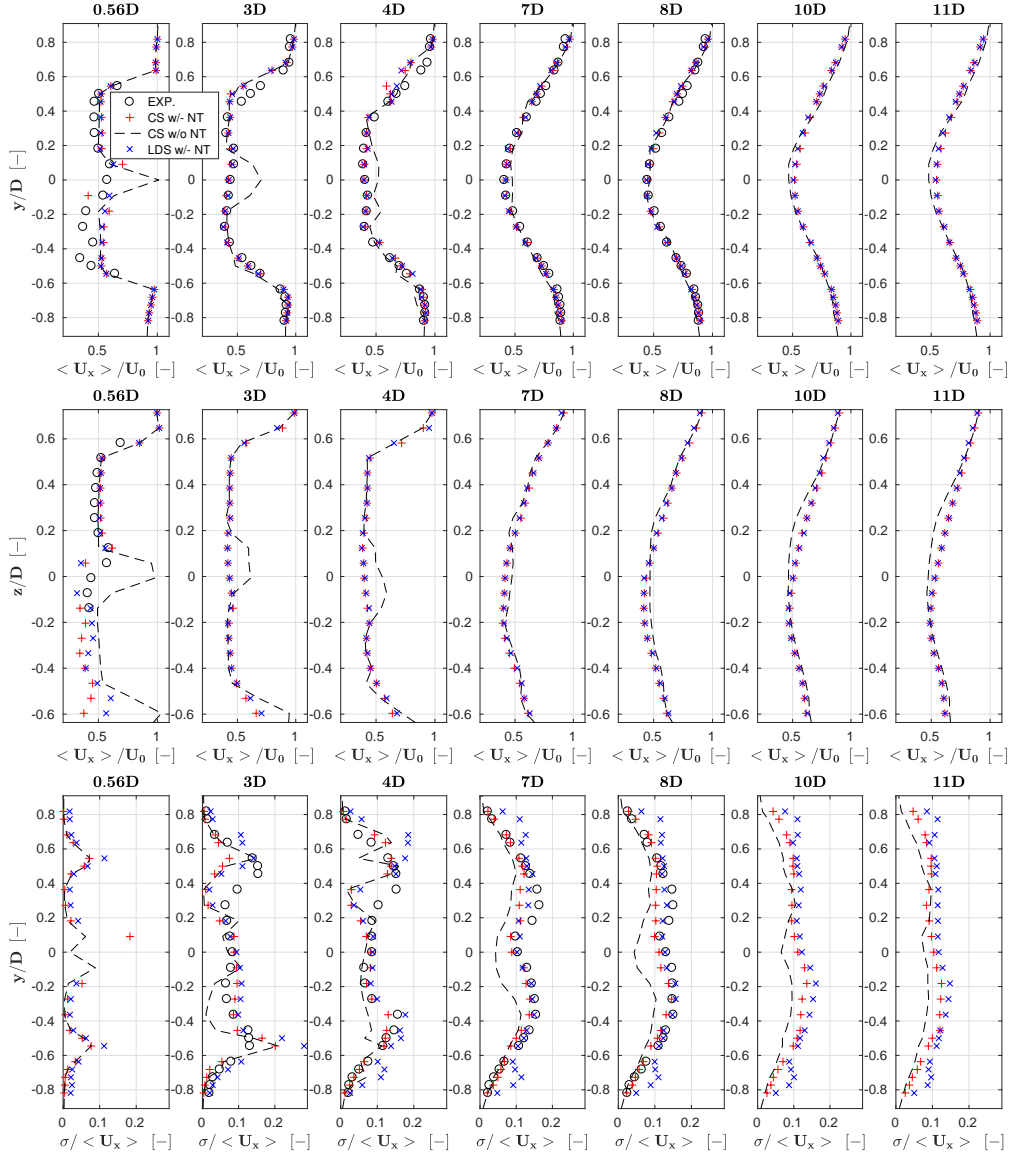


Figure 5. Profiles of normalized time-averaged streamwise velocity $\langle u_x \rangle / U_0$ along hub height horizontal lines (top row), and along vertical lines through the hub (middle row). Turbulence intensity $\sigma / \langle u_x \rangle$ along hub height horizontal lines (bottom row). Red + symbols: CS model with nacelle and tower; black dashed line: CS model without nacelle and tower; blue \times symbols: LDS model with nacelle and tower; black \circ symbols: experimental results.

recovery, as shown in the speed deficit plots. Here again, this confirms the need for including nacelle and tower in the simulation.

5.2 Low turbulence inflow simulation

400 In this section, the characteristics of the LES framework are assessed with reference to three wake control strategies, namely power derating (or axial induction control), wake steering by yaw misalignment and wake enhanced recovery by cyclic pitch control (CyPC). The flow conditions and setup of the simulations are the same described earlier in the baseline case.

5.2.1 Power derating

405 Power derating was accomplished in the experiment by providing the turbine power controller with modified values of the rotor speed and torque. Specifically, for a power partialization factor p_f , the reference rotor speed is modified as $\sqrt[3]{p_f}\Omega$, while the torque as $\sqrt[3]{p_f^2}Q$. This corresponds to having set the rated wind speed to the value $\sqrt[3]{p_f}U_\infty$; since this is lower than the current wind speed U_∞ , the machine is now effectively operating in the full power region. Therefore, the collective blade
410 pitch controller automatically adjusts the pitch setting to track the new reference rotor speed.

The resulting pitch and rotor speed changes modify the angle of attack and Reynolds number at the blade sections. Therefore tests that include power derating are useful for evaluating the quality of the identified multi-airfoil tables. Indeed, to accurately estimate rotor power and thrust, the lifting line airfoil polars need to match the aerodynamic characteristics of the corresponding blade sections,
415 in order to generate and project the proper body forces onto the fluid domain.

Simulations are conducted by prescribing the rotor speed and blade pitch measured in the experiment. Four power settings are considered, namely 100%, 97.5%, 95% and 92.5% of rated power. Figure 6 shows wake velocity profiles measured at hub-height at a 4D downstream position. For all cases, rotor-averaged speed error $\langle \Delta u_x \rangle$ and $\text{RMS}(u_x)$ are about 1% and 0.25 m/s, respectively.
420 A quite satisfactory agreement between the simulation and experimental results can be noticed, although partialization seems to have only a modest effect on wake profile. Turbulence intensity profiles are not presented here, since the quality of the comparison is very similar to the one of the baseline case.

However, the situation is less satisfactory for rotor power and thrust, as indeed shown in Table 2.
425 Results indicate that power is particularly off, while thrust is affected by somewhat smaller errors. This might indicate a possible discrepancy in the behavior of the aerodynamic coefficients —and especially of drag— with respect to the angle of attack. To verify that polars are indeed the culprit, several tests were conducted to check the effect of the Gaussian width ϵ . Indeed, one can tune ϵ to nearly exactly match the experimental results for each value of the curtailment factor. There is,
430 however, not a single ϵ that is able to accommodate the investigated range of curtailments. On the other hand, keeping ϵ fixed, one can observe that the errors in power and thrust grow as the extent

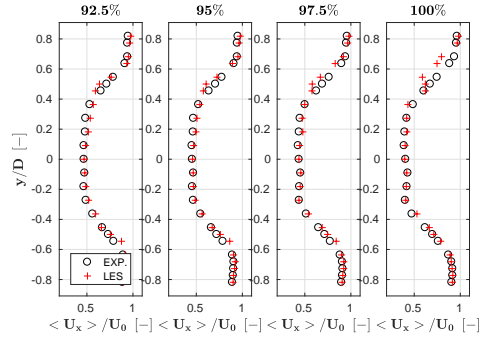


Figure 6. Normalized time-averaged streamwise velocity $\langle u_x \rangle / U_0$ profiles at 100% and 92.5% power settings, measured at hub height and 4D downstream of the rotor. Red + symbols: LES; black o symbols: experimental results.

of power curtailment increases (and, therefore, as the angle of attack at the blade sections changes). These results seem to support the hypothesis that the slopes of the lift and drag coefficients with respect to the angle of attack are not calibrated well. To improve this aspect of the model, the polar calibration is being improved by a more sophisticated statistical weighting of the various experiment and by considering a spanwise variability of the Reynolds number.

435

		100%	97.5%	95%	92.5%
Power	Exp. [W]	45.79	44.36	43.20	42.11
	Sim. [W]	45.45	42.28	39.72	37.33
	ΔP %	-0.74	-4.69	-8.06	-11.35
Thrust	Exp. [N]	15.18	14.24	13.62	13.10
	Sim. [N]	16.05	14.57	13.56	12.70
	ΔT %	5.73	2.32	-0.44	-3.05

Table 2. Power and thrust at 100%, 97.5%, 95% and 92.5% power settings.

5.2.2 Wake steering by yaw misalignment

Next, the LES model is verified in yaw misalignment conditions, which are relevant to wake deflection control. Hub-height wake profiles measured in low turbulence conditions are used for the comparison, for yaw misalignment angles of ± 5 deg, ± 10 deg and ± 20 deg.

440

Simulated and measured longitudinal speed profiles are presented at a downstream distance of 4D in Fig. 7. Similar results were obtained at other distances, but are not reported for space limitations. The maximum rotor-averaged difference $\langle \Delta u_x \rangle$ between simulation and experiment is 4.1% and corresponds to the 20 deg case, while the maximum $\text{RMS}(u_x)$ is 0.35 m/s at -10 deg. The average

445 $\langle \Delta u_x \rangle$ and $\text{RMS}(u_x)$ over the six yaw cases are equal to 1.6% and 0.29 m/s, respectively. The results indicate a good agreement between simulation and measurement, both in terms of wake deficit and pattern. Notice, however, that the 1.6% average speed error would correspond to a 4.8% power error for a second wind turbine operating in full wake shading at this downstream difference, a value that is small but not completely negligible.

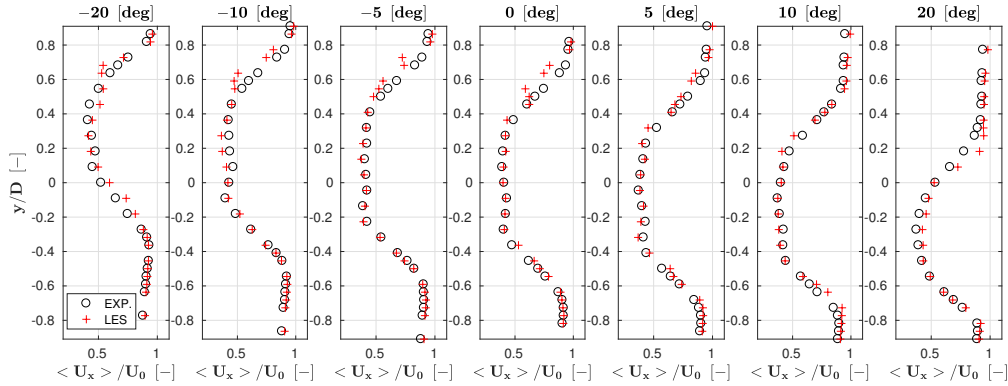


Figure 7. Normalized time-averaged streamwise velocity profiles at hub height for different yaw misalignments, 4D downstream of the rotor. Red + symbols: LES; black o symbols: experimental results.

450 5.2.3 Enhanced wake recovery by cyclic pitch control

A third wake control strategy in the same low turbulence conditions is considered, where the rotor blades are cyclicly pitched. The effect of cyclic pitching is that of changing the angle of attack of the blade sections cyclicly over one rotor revolution. In turn, this results in an azimuthal change of the out of plane forces generated by the section, which has then the effect of correspondingly modifying the local induced velocity. A simple analytical model of the effects of cyclic pitching was developed in Wang et al. (2016). The analysis showed that, as already noticed by other authors (Fleming et al., 2014), CyPC has some effect on the speed of recovery of the wake, but results only in a very modest deflection of its path. In fact, wake deflection by yawing is driven by the tilting of the rotor thrust, which results in a significant lateral force being applied onto the flow. On the other hand, CyPC does modify the induced velocity, but only generates negligible lateral forces. In addition, it was observed that CyPC also results in large moments being generated in the rotor fixed frame, which further questions the practical applicability of this wake manipulation strategy. Nonetheless, CyPC is considered here to further verify the characteristics of the LES framework in operating conditions that differ significantly from the ones of the previous test cases.

465 Each blade is pitched according to $\theta_i = \theta_0 + \theta_c \cos(\psi_i + \gamma)$, where θ_0 is the collective pitch constant, θ_c the 1P pitch amplitude, ψ_i the blade azimuth angle (clockwise looking downstream, and null when the blade is pointing vertically up), and γ is the phase angle (with the same origin and positive sense as ψ). The CyPC parameters were set as $\theta_0 = 0$ deg, $\theta_c = 5.3$ deg, and $\gamma = 270$ deg.

Given the effects of CyPC on the induced velocity and on the near wake behavior, a more complete analysis can be performed by using the PIV measurements than considering the simple hub-height line scans obtained by hot wire probes. Figure 8 reports, at left, the streamwise velocity just behind the rotor ($x/D = 0.56$), which is a distance where few results have been previously reported. The images show that the use of CyPC has a strong effect on the wake structure, leading to a marked unsymmetrical shape. Indeed, the phase angle $\gamma = 270$ deg implies that blades have maximum pitch, and hence produce the minimal rotor-plane-normal force, in the left part of the rotor—as shown in the figure—which in turn exhibits the lowest induction and highest resulting longitudinal flow speed. A comparison between experimental and numerical results shows that there is, in general, a good qualitative agreement and that the main distortion effects caused by CyPC are reasonably captured. The rotor-average error $\langle \Delta u_x \rangle$ between simulation and measurement is 2.69%, while $\text{RMS}(u_x)$ is 0.79 m/s.

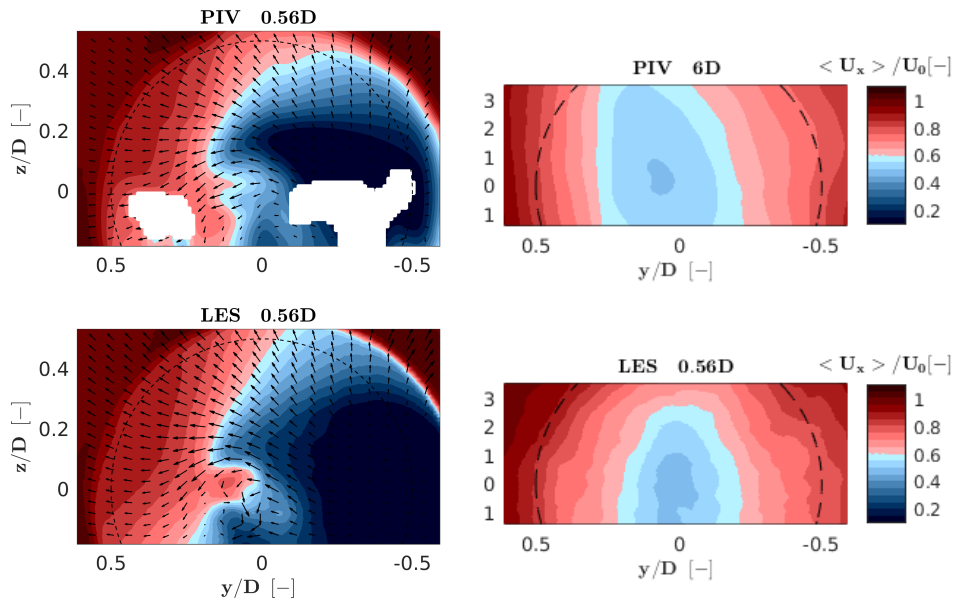


Figure 8. Streamwise velocity contour plots for the PIV measurements (top row) and LES model (bottom row), measured 0.56D (left) and 6D (right) downstream of the rotor. Black arrows indicate the cross-wind velocity component at a number of sampling points.

The discrepancy between simulation and experiment is two times larger than in the baseline case. One possible reason for this is that unsteady aerodynamic effects of the airfoils are neglected. This could be improved by using unsteady aerodynamic models in the lifting line, including for example a Theodorsen correction and a dynamic stall model. Although the Beddoes-Leishman approach (Moriarty and Hansen, 2005) is implemented in FAST and therefore could be readily used in the present LES framework, the model requires the definition of several airfoil-dependent parameters,

which would need to be specifically calibrated for the low-Reynolds airfoils used on the G1 scaled wind turbine.

The comparison of LES and experiment in the far wake (6D) is slightly better, as it can be observed
490 in the right part of the same figure. The wake recovery is reasonably good in terms of flow speed,
although the slight tilting towards the right shown by the PIV measurements is not apparent in the
LES results. Lastly, it should be remarked that CyPC leads to a faster recovery of the wake than in
the baseline case, as already noticed by Wang et al. (2016). In principle, this could be of interest for
wind farm control, although, as previously mentioned, the large resulting loads exerted on the rotor
495 probably limit the practical applicability of this control concept.

5.3 Moderate turbulence inflow simulation

Next, a turbulent case is considered, where a flow characterized by a 6% hub-height turbulence
intensity is generated by the precursor simulation described in §3.1. The wind turbine model is
aligned with the streamwise flow direction and the hub-height wind speed is equal to 4.76 m/s
500 (partial load region). The simulated wind turbine operates in two different modes, namely with a
fixed rotating speed of 720 RPM and blade pitch angle of 1.4 deg (which are the values measured on
the scaled model in the experiment) or with a controller in the loop (Bottasso et al., 2014).

The aerodynamic power output, averaged over a 60 s time window, is equal to 31.0 W for the
experiment, and to 30.5 W and 31.2 W for the prescribed speed and closed-loop torque simulations,
505 respectively. In this latter case, the average rotor speed was only 2.2% higher than the one measured
on the wind turbine, which clearly indicates a good overall match of the numerical model with
the experiment. On the other hand, the power standard deviation was 0.2 W, 0.6 W and 0.3 W,
respectively for the experiment, prescribed speed and closed-loop simulations. Clearly, prescribing
a constant speed to the rotor in the numerical simulation induces significant torque oscillations,
510 because the rotor cannot adjust to the turbulent flow fluctuations. When loads are of interest, it is
therefore essential to use a closed-loop controller also in the simulation. However, in this case the
simulation might drift away from the operating condition realized in the experiment, if the numerical
model has a significant mismatch with respect to reality. Apparently, this is not the case here, and
the numerical model seems to be well in line with the experimental one.

515 Figure 9 shows the normalized time-averaged velocity and turbulence intensity profiles for the
LES model and experiment, at distances of -1.5D, 1.4D, 1.7D, 2D, 3D, 4D, 6D and 9D from the
rotor. The position at -1.5D is outside of the induction zone, and the flow can be regarded as being the
undisturbed free stream. The LES curves show, in general, a good agreement with the experimental
ones. Only the case of the closed-loop regulation is reported here, as results are nearly identical to
520 the prescribed-speed case. The rotor-averaged simulation error $\langle \Delta u_x \rangle$ is less than 1% on average
across all distances. From the near (1.4D) to the far (9D) wake regions, the root mean square error

$\text{RMS}(u_x)$ gradually reduces from 0.2 m/s to 0.1 m/s. The comparisons all indicate that the LES results are in good agreement with the experimental ones.

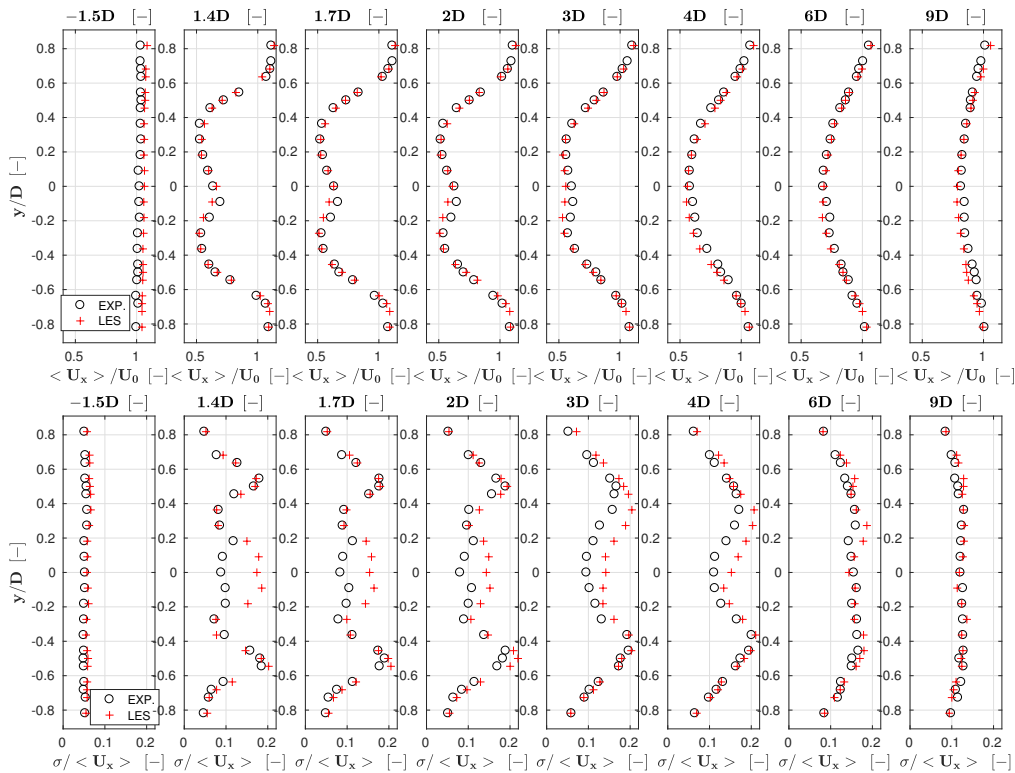


Figure 9. Normalized time-averaged streamwise velocity $\langle u_x \rangle / U_0$ (top row) and turbulence intensity $\sigma / \langle u_x \rangle$ (bottom row) profiles at hub height. Red + symbols: LES; black o symbols: experimental results.

Contrary to the baseline low-turbulence simulation, the two turbulence intensity peaks induced
525 by the blade tip vortices are well predicted in this case. To explain this phenomenon, we report in
Fig. 10 for the low (left) and moderate (right) turbulence cases the instantaneous streamwise speed
component u_x / U_0 , the vorticity $\langle \nabla \times \mathbf{u} \rangle$ and the turbulence intensity $\sigma / \langle u_x \rangle$, on a horizontal plane
at hub height. As previously observed, the turbulent structures induced by nacelle and tower are
different for the two cases, on account of the different boundary conditions on their surfaces.

530 Vorticity shed by the tips in the near wake is quite similar for the low and moderate turbulence
cases. Turbulence intensity is, on the other hand, very different in the blade tip region for these two
different ambient turbulence cases. In fact, the higher background turbulence of the turbulent inflow
case triggers the instability of the tip vortical structures (Sørensen, 2011), which rapidly break down.
The contour plots of the turbulent simulation clearly shows that, starting from 0.1D downstream,
535 the tip vortices generate significant turbulence intensity, while vorticity quickly diminishes from
2D downstream, signalling that the coherent tip vortices have broken down into smaller and less
coherent structures. Quite differently, the low turbulence case shows a persistent modest turbulence

intensity and high vorticity up to about $4D$ downstream of the rotor. In this case, capturing the right amount of speed fluctuations—which are here mostly caused by the tip vortices, in contrast to the other case that is predominantly dominated by turbulent fluctuations— probably requires a denser grid than the one used here, and this explains the poor match with the experiments in this case in the near-wake tip region. Apparently, the same grid is however capable of representing well the simpler turbulent case. An analysis of tip vortex breakdown is reported in Trolborg et al. (2015) using a blade conforming approach, which therefore uses very significantly denser grids than in the present case.

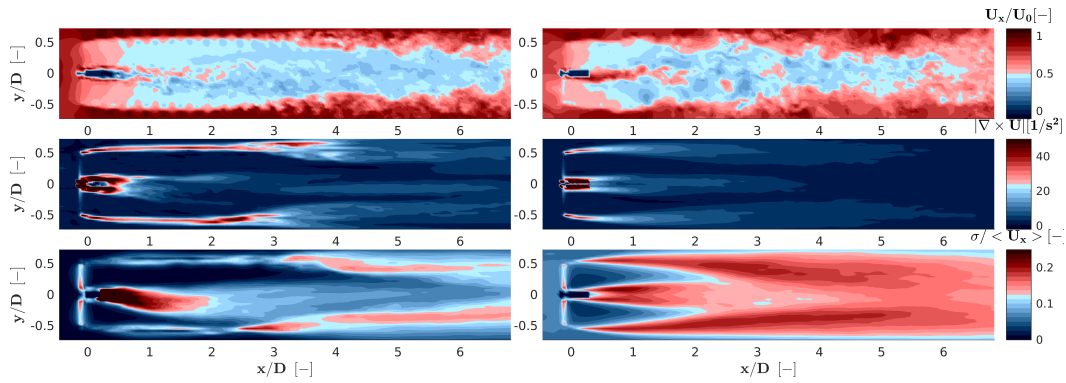


Figure 10. Instantaneous streamwise speed component u_x/U_0 (top row), vorticity $\langle \nabla \times \mathbf{u} \rangle$ (central row), and turbulence intensity $\sigma/\langle u_x \rangle$ (bottom row). At left, low turbulence case; at right: moderate turbulence case.

6 Conclusions

This paper has employed a LES approach for the simulation of wind turbine wakes, obtaining a complete digital copy of scaled experiments performed in a boundary layer wind tunnel. The main goal of the paper was to try to quantify the ability of LES in representing operating conditions relevant to wind farm control. To this end, numerical results were compared to wind tunnel measurements of one single wind turbine, while multiple machines and wake interactions are studied in Wang et al. (2017b, 2018) and in other forthcoming papers. While this work does not have the ambition to develop a comprehensive validation activity, it represents a step in the direction of a better understanding of the capabilities and limits of the current high-fidelity simulation technology for wakes.

A low turbulence normal-operation problem is considered first, showing that simulations are in good agreement with experiments, both in terms of rotor quantities (thrust and power) and wake behavior. Next, the three wake control strategies of power derating, wake steering by yaw misalignment and wake enhanced recovery by cyclic pitch control are studied. Results show a good agreement of simulations with experiments for yaw misalignment, but are less satisfactory for derating, probably

on account of inaccuracies in the airfoil drag. The wake turbulence intensity shows some discrepancies, which were here attributed to a lack of refinement of the grid that in turn affects the breakdown of the near wake vortical structures. Slightly less accurate results are obtained for cyclic pitching, possibly due to un-modeled unsteady airfoil aerodynamics.

565 The paper continues by considering a moderately turbulent wind. The characteristics of the simulated turbulent flow are in good agreement with measurements. The average streamwise velocity is within 1% of the experiments, the average turbulence intensity within 5-7%, while the turbulent kinetic energy spectrum and integral time scale also exhibit a good matching. The wake characteristics are in very good agreement with the experiments, since tip vortices break down earlier than in
570 the low turbulence condition, relaxing a bit the need for very dense grids in the near wake region. The use of a controller in the loop leads to a more realistic response of the model turbine to the turbulent flow, which is important in case the load response of the machine is of interest. Remarkably, the model in the loop also operates at essentially the same rotor speed as the experiment, which demonstrates the overall fidelity of the digital model to the experimental one.

575 Results shown in this work indicate that the present LES-ALM approach is a viable way of simulating scaled wind tunnel experiments. Results are however not perfect, and areas of improvement include a more sophisticated and accurate calibration of the airfoil polars, the inclusion of airfoil unsteady aerodynamic effects (which however also call for the calibration of these models with dedicated data sets), and a more efficient refinement of the grid where necessary by the use of un-
580 structured meshing and adaption techniques.

These encouraging results motivate and justify the application of the present simulation framework to the analysis of clusters of wake-interacting wind turbines, for which we have gathered an ample collection of data sets in multiple operating conditions. Hopefully, this will lead to a better understanding of wake behavior, which is of crucial importance for the design and operation of wind
585 turbines and wind power plants. The final validation of the present and similar simulation approaches can undoubtedly benefit from the use of scaled wind tunnel experiments, as attempted in this work, as an intermediate step towards their application to the full scale case.

Acknowledgements. This work has been supported in part by the CL-WINDCON project, which receives funding from the European Union Horizon 2020 research and innovation program under grant agreement
590 No. 727477. The first author was supported by the Chinese Scholarship Council. All tests were performed at the wind tunnel of the Politecnico di Milano, with the support of Prof. A. Croce, Dr. A. Zanotti, Mr. G. Campanardi and Mr. D. Grassi. The authors wish to thank Mr. E.M. Nanos of the Technische Universität München and Dr. V. Petrović now at the University of Oldenburg for their contribution to the experimental work. The authors also express their appreciation to the Leibniz Supercomputing Centre (LRZ) for providing access and
595 computing time on the SuperMUC Petascale System.

Nomenclature

	A	Rotor swept area
	D	Rotor diameter
	C_D	Drag coefficient
600	C_L	Lift coefficient
	C_k^0	Nominal coefficient
	C_s	Smagorinsky constant
	$E(f)$	Turbulent kinetic energy spectrum
	J	Cost function
605	N	Number of available experimental observations
	Q	Rotor torque
	\mathbf{R}	Covariance matrix
	T_τ	Integral time scale
	U_∞	Free-stream wind speed
610	h	Grid size
	p_f	Power partialization factor
	$r(\tau)$	Auto-correlation
	u_i	Velocity component
	y^+	Dimensionless wall distance
615		
	α	Angle of attack
	β_m	Tunable constant for Gamma scheme
	γ	Phase angle
	ϵ	Gaussian width
620	η	Span-wise location
	θ	Blade pitch angle
	ψ	Blade azimuthal angle
	ρ	Density
	$\sigma/\langle u_x \rangle$	Turbulence intensity
625	τ	Time shift for autocorrelation analysis
	Ω	Rotor speed
	$\Delta \cdot$	Correction or difference
	$\langle \cdot \rangle$	Averaged quantity
630	$\tilde{(\cdot)}$	Resolved quantity

	ALM	Actuator line method
	bi-CG	Bi-conjugate gradient
635	CFD	Computational fluid dynamics
	CG	Conjugate gradient
	CS	Constant Smagorinsky
	CyPC	Cyclic pitch control
	DIC-GS	Gauss-Seidel smoothing with diagonal incomplete Cholesky factorization
640	DILU	Diagonal incomplete-LU factorization
	GAMG	Geometric-algebraic multi-grid
	IB	Immersed boundary
	LES	Large-eddy simulation
	LDS	Lagrangian averaging dynamic Smagorinsky
645	LiDAR	Light Detection and Ranging
	NOC	Non-orthogonal corrector
	PISO	Pressure-Implicit with Splitting of Operators
	PIV	Particle Image Velocimetry
	RANS	Reynolds-averaged Navier Stokes
650	Re	Reynolds number
	RMS	Root mean square
	TSR	Tip speed ratio

References

- Abkar, M. and Dabiri, J. O.: Self-similarity and flow characteristics of vertical-axis wind turbine wakes: an LES
655 study, *Journal of Turbulence*, 18, 373–389, 2017.
- Bandringa, H.: Immersed boundary methods, Masters thesis, University of Groningen, 9700, 2010.
- Barthelmie, R. J., Larsen, G., Frandsen, S., Folkerts, L., Rados, K., Pryor, S., Lange, B., and Schepers, G.:
Comparison of wake model simulations with offshore wind turbine wake profiles measured by SODAR,
Journal of Atmospheric and Oceanic Technology, 23, 888–901, 2006.
- 660 Barthelmie, R. J., Frandsen, S. T., Nielsen, M., Pryor, S., Rethore, P.-E., and Jørgensen, H. E.: Modelling and
measurements of power losses and turbulence intensity in wind turbine wakes at Middelgrunden offshore
wind farm, *Wind Energy*, 10, 517–528, 2007.
- Bartl, J., Pierella, F., and Saetana, L.: Wake measurements behind an array of two model wind turbines, *Energy
Procedia*, 24, 305–312, 2012.
- 665 Bottasso, C. L., Campagnolo, F., and Petrović, V.: Wind tunnel testing of scaled wind turbine models: Beyond
aerodynamics, *Journal of Wind Engineering and Industrial Aerodynamics*, 127, 11–28, 2014.
- Buhl, M.: NWTC Design Codes (WT-Perf), Last modified, 2009.
- Calaf, M., Meneveau, C., and Meyers, J.: Large eddy simulation study of fully developed wind-turbine array
boundary layers, *Physics of Fluids*, 22, 015 110, 2010.
- 670 Campagnolo, F., Petrović, V., Bottasso, C. L., and Croce, A.: Wind tunnel testing of wake control strategies, in:
American Control Conference (ACC), 2016, pp. 513–518, IEEE, 2016a.
- Campagnolo, F., Petrović, V., Nanos, E. M., Tan, C. W., Bottasso, C. L., Paek, I., Kim, H., Kim, K., et al.: Wind
tunnel testing of power maximization control strategies applied to a multi-turbine floating wind power plat-
form, in: *The 26th International Ocean and Polar Engineering Conference*, International Society of Offshore
675 and Polar Engineers, 2016b.
- Campagnolo, F., Petrović, V., Schreiber, J., Nanos, E. M., Croce, A., and Bottasso, C. L.: Wind tunnel test-
ing of a closed-loop wake deflection controller for wind farm power maximization, in: *Journal of Physics:
Conference Series*, vol. 753, p. 032006, IOP Publishing, 2016c.
- Campanardi, G., Grassi, D., Zanotti, A., Nanos, E. M., Campagnolo, F., Croce, A., and Bottasso, C. L.: Stereo
680 particle image velocimetry set up for measurements in the wake of scaled wind turbines, in: *Journal of
Physics: Conference Series*, vol. 882, p. 012003, IOP Publishing, 2017.
- Carcangiu, C. E.: CFD-RANS study of horizontal axis wind turbines, Ph.D. thesis, Università degli Studi di
Cagliari, 2008.
- Chamorro, L. P. and Porté-Agel, F.: A wind-tunnel investigation of wind-turbine wakes: boundary-layer turbu-
685 lence effects, *Boundary-layer Meteorology*, 132, 129–149, 2009.
- Churchfield, M. and Lee, S.: NWTC design codes-SOWFA, Tech. rep., National Renewable Energy Laboratory
(NREL), Golden, CO., <http://wind.nrel.gov/designcodes/simulators/SOWFA>, 2012.
- Churchfield, M. J., Lee, S., Moriarty, P. J., Martinez, L. A., Leonardi, S., Vijayakumar, G., and Brasseur, J. G.:
A large-eddy simulation of wind-plant aerodynamics, AIAA paper, 537, 2012, 2012.
- 690 Churchfield, M. J., Lee, S., Schmitz, S., and Wang, Z.: Modeling wind turbine tower and nacelle effects within
an actuator line model, in: *33rd Wind Energy Symposium*, p. 0214, 2015.

- Churchfield, M. J., Schreck, S., Martinez-Tossas, L. A., Meneveau, C., and Spalart, P. R.: An Advanced Actuator Line Method for Wind Energy Applications and Beyond, in: 35th Wind Energy Symposium, p. 1998, 2017.
- 695 Deardorff, J. W.: A numerical study of three-dimensional turbulent channel flow at large Reynolds numbers, *Journal of Fluid Mechanics*, 41, 453–480, 1970.
- Fleming, P., Gebraad, P., Churchfield, M., Lee, S., Johnson, K., Michalakes, J., van Wingerden, J.-W., and Moriarty, P.: SOWFA Super-controller User’s Manual, National Renewable Energy Laboratory, 2013.
- Fleming, P., Gebraad, P. M., Lee, S., van Wingerden, J.-W., Johnson, K., Churchfield, M., Michalakes, J., Spalart, P., and Moriarty, P.: Simulation comparison of wake mitigation control strategies for a two-turbine
700 case, *Wind Energy*, 18, 2135–2143, 2015.
- Fleming, P. A., Gebraad, P. M., Lee, S., van Wingerden, J.-W., Johnson, K., Churchfield, M., Michalakes, J., Spalart, P., and Moriarty, P.: Evaluating techniques for redirecting turbine wakes using SOWFA, *Renewable Energy*, 70, 211–218, 2014.
- Gaumond, M., Réthoré, P.-E., Ott, S., Pena, A., Bechmann, A., and Hansen, K. S.: Evaluation of the wind
705 direction uncertainty and its impact on wake modeling at the Horns Rev offshore wind farm, *Wind Energy*, 17, 1169–1178, 2014.
- Gebraad, P., Teeuwisse, F., Wingerden, J., Fleming, P. A., Ruben, S., Marden, J., and Pao, L.: Wind plant power optimization through yaw control using a parametric model for wake effects—a CFD simulation study, *Wind Energy*, 19, 95–114, 2016.
- 710 Greenshields, C. J.: Openfoam user guide, OpenFOAM Foundation Ltd, version, 3, 2015.
- Hansen, K. S., Barthelmie, R. J., Jensen, L. E., and Sommer, A.: The impact of turbulence intensity and atmospheric stability on power deficits due to wind turbine wakes at Horns Rev wind farm, *Wind Energy*, 15, 183–196, 2012.
- Holzmann, T.: Mathematics, Numerics, Derivations and OpenFOAM®, 2016.
- 715 Jasak, H. and Rigler, D.: Finite volume immersed boundary method for turbulent flow simulations, in: 9th OpenFOAM Workshop, 2014.
- Jasak, H., Weller, H., and Gosman, A.: High resolution NVD differencing scheme for arbitrarily unstructured meshes, *International Journal for Numerical Methods in Fluids*, 31, 431–449, 1999.
- Jensen, N. O.: A note on wind generator interaction, DTU, 1983.
- 720 Jha, P. K., Churchfield, M. J., Moriarty, P. J., and Schmitz, S.: Guidelines for volume force distributions within actuator line modeling of wind turbines on large-eddy simulation-type grids, *Journal of Solar Energy Engineering*, 136, 031 003, 2014.
- Jiménez, Á., Crespo, A., and Migoya, E.: Application of a LES technique to characterize the wake deflection of a wind turbine in yaw, *Wind Energy*, 13, 559–572, 2010.
- 725 Jonkman, J., Butterfield, S., Musial, W., and Scott, G.: Definition of a 5-MW reference wind turbine for offshore system development, Tech. rep., National Renewable Energy Lab.(NREL), Golden, CO (United States), 2009.
- Jonkman, J. M. and Buhl Jr, M. L.: FAST User’s Guide-Updated August 2005, Tech. rep., National Renewable Energy Laboratory (NREL), Golden, CO., 2005.

- 730 Kennedy, J. M., Fox, B., Littler, T., and Flynn, D.: Validation of fixed speed induction generator models for inertial response using wind farm measurements, *IEEE Transactions on Power Systems*, 26, 1454–1461, 2011.
- Knudsen, T., Bak, T., and Svenstrup, M.: Survey of wind farm control—power and fatigue optimization, *Wind Energy*, 18, 1333–1351, doi:10.1002/we.1760, 2015.
- 735 Lai, M.-C. and Peskin, C. S.: An immersed boundary method with formal second-order accuracy and reduced numerical viscosity, *Journal of Computational Physics*, 160, 705–719, 2000.
- Larsen, G. C., Madsen Aagaard, H., Bingöl, F., Mann, J., Ott, S., Sørensen, J. N., Okulov, V., Troldborg, N., Nielsen, N. M., Thomsen, K., et al.: Dynamic wake meandering modeling, Tech. rep., Risø National Laboratory, 2007.
- 740 Lu, H. and Porté-Agel, F.: Large-eddy simulation of a very large wind farm in a stable atmospheric boundary layer, *Physics of Fluids*, 23, 065 101, 2011.
- Martinez, L. A., Leonardi, S., Churchfield, M. J., and Moriarty, P. J.: A comparison of actuator disk and actuator line wind turbine models and best practices for their use, *AIAA Paper*, 900, 2012.
- Martínez-Tossas, L. A., Churchfield, M. J., and Leonardi, S.: Large eddy simulations of the flow past wind turbines: actuator line and disk modeling, *Wind Energy*, 18, 1047–1060, 2015.
- 745 Martínez-Tossas, L. A., Churchfield, M. J., and Meneveau, C.: Optimal smoothing length scale for actuator line models of wind turbine blades based on Gaussian body force distribution, *Wind Energy*, 20, 1083–1096, 2017.
- Martínez-Tossas, L. A., Churchfield, M. J., Yilmaz, A. E., Sarlak, H., Johnson, P. L., Sørensen, J. N., Meyers, J., and Meneveau, C.: Comparison of four large-eddy simulation research codes and effects of model coefficient and inflow turbulence in actuator-line-based wind turbine modeling, *Journal of Renewable and Sustainable Energy*, 10, 033 301, 2018.
- 750 Medici, D. and Alfredsson, P.: Measurements on a wind turbine wake: 3D effects and bluff body vortex shedding, *Wind Energy*, 9, 219–236, 2006.
- 755 Meneveau, C., Lund, T. S., and Cabot, W. H.: A Lagrangian dynamic subgrid-scale model of turbulence, *Journal of Fluid Mechanics*, 319, 353–385, 1996.
- Mittal, R. and Iaccarino, G.: Immersed boundary methods, *Annu. Rev. Fluid Mech.*, 37, 239–261, 2005.
- Mo, J.-O., Choudhry, A., Arjomandi, M., and Lee, Y.-H.: Large eddy simulation of the wind turbine wake characteristics in the numerical wind tunnel model, *Journal of Wind Engineering and Industrial Aerodynamics*, 112, 11–24, 2013.
- 760 Moriarty, P. J. and Hansen, A. C.: *AeroDyn theory manual*, Tech. rep., National Renewable Energy Lab., Golden, CO (US), 2005.
- Moukalled, F., Mangani, L., Darwish, M., et al.: *The finite volume method in computational fluid dynamics*, Springer, 2016.
- 765 Nilsson, K., Ivanell, S., Hansen, K. S., Mikkelsen, R., Sørensen, J. N., Breton, S.-P., and Henningson, D.: Large-eddy simulations of the Lillgrund wind farm, *Wind Energy*, 18, 449–467, 2015.
- O’neill, P., Nicolaidis, D., Honnery, D., Soria, J., et al.: Autocorrelation functions and the determination of integral length with reference to experimental and numerical data, in: *15th Australasian Fluid Mechanics Conference*, vol. 1, pp. 1–4, The University of Sydney, 2004.

- 770 Porté-Agel, F., Wu, Y.-T., Lu, H., and Conzemius, R. J.: Large-eddy simulation of atmospheric boundary layer flow through wind turbines and wind farms, *Journal of Wind Engineering and Industrial Aerodynamics*, 99, 154–168, 2011.
- Renkema, D. J.: Validation of wind turbine wake models, Master of Science Thesis, Delft University of Technology, 19, 2007.
- 775 Santoni, C., Carrasquillo, K., Arenas-Navarro, I., and Leonardi, S.: Effect of tower and nacelle on the flow past a wind turbine, *Wind Energy*, 20, 1927–1939, 2017.
- Sarlak, H., Meneveau, C., and Sørensen, J. N.: Role of subgrid-scale modeling in large eddy simulation of wind turbine wake interactions, *Renewable Energy*, 77, 386–399, 2015.
- Sedaghatizadeh, N., Arjomandi, M., Kelso, R., Cazzolato, B., and Ghayesh, M. H.: Modelling of wind turbine
780 wake using large eddy simulation, *Renewable Energy*, 115, 1166–1176, 2018.
- Shamsoddin, S. and Porté-Agel, F.: Large-eddy simulation of atmospheric boundary-layer flow through a wind farm sited on topography, *Boundary-layer meteorology*, 163, 1–17, 2017.
- Sørensen, J. N.: Instability of helical tip vortices in rotor wakes, *Journal of Fluid Mechanics*, 682, 1–4, 2011.
- Sorensen, J. N. and Shen, W. Z.: Numerical modeling of wind turbine wakes, *Journal of fluids engineering*, 124,
785 393–399, 2002.
- Sørensen, J. N., Mikkelsen, R. F., Henningson, D. S., Ivanell, S., Sarmast, S., and Andersen, S. J.: Simulation of wind turbine wakes using the actuator line technique, *Philosophical transactions. Series A, Mathematical, physical, and engineering sciences*, 373, 2015.
- Stevens, R. J., Martínez-Tossas, L. A., and Meneveau, C.: Comparison of wind farm large eddy simulations
790 using actuator disk and actuator line models with wind tunnel experiments, *Renewable energy*, 116, 470–478, 2018.
- Stovall, T., Pawlas, G., and Moriarty, P.: Wind farm wake simulations in OpenFOAM, AIAA Paper, 825, 2010, 2010.
- Troldborg, N., Zahle, F., Réthoré, P.-E., and Sørensen, N. N.: Comparison of wind turbine wake properties
795 in non-sheared inflow predicted by different computational fluid dynamics rotor models, *Wind Energy*, 18, 1239–1250, 2015.
- Uhlmann, M.: An immersed boundary method with direct forcing for the simulation of particulate flows, *Journal of Computational Physics*, 209, 448–476, 2005.
- van Dooren, M. F., Campagnolo, F., Sjöholm, M., Angelou, N., Mikkelsen, T., and Kühn, M.: Demonstration and uncertainty analysis of synchronised scanning LiDAR measurements of 2-D velocity fields
800 in a boundary-layer wind tunnel, *Wind Energy Science*, 2, 329–341, doi:10.5194/wes-2-329-2017, <https://www.wind-energ-sci.net/2/329/2017/>, 2017.
- Wang, J., Bottasso, C. L., and Campagnolo, F.: Wake redirection: comparison of analytical, numerical and experimental models, in: *TORQUE 2016, The Science of Making Torque from Wind*, IOP Publishing, 2016.
- 805 Wang, J., Foley, S., Nanos, E., Yu, T., Campagnolo, F., Bottasso, C., Zanotti, A., and Croce, A.: Numerical and experimental study for wake redirection techniques in a boundary layer wind tunnel, in: *Journal of Physics: Conference Series*, 2017a.
- Wang, J., Mclean, D., Campagnolo, F., Yu, T., and Bottasso, C.: Large-eddy simulation of waked turbines in a scaled wind farm facility, in: *Journal of Physics: Conference Series*, 2017b.

- 810 Wang, J., Liu, y., Filippo, C., and Bottasso, C. L.: Verification of a Low Cost Scale-Adaptive CFD Formulation for Waked Wind Turbines, in: AIAA Science and Technology Forum and Exposition (SciTech 2018), 2018.
- Wu, Y.-T. and Porté-Agel, F.: Large-eddy simulation of wind-turbine wakes: evaluation of turbine parametrizations, *Boundary-layer meteorology*, 138, 345–366, 2011.
- Yang, X. and Sotiropoulos, F.: A new class of actuator surface models for wind turbines, *Wind Energy*, 21, 815 285–302, 2018.
- Zasso, A., Giappino, S., Muggiasca, S., and Rosa, L.: Optimization of the boundary layer characteristics simulated at Politecnico di Milano Boundary Layer Wind Tunnel in a wide scale ratio range, in: Proceedings of the 6th Asia-Pacific Conference on Wind Engineering, 2005.