

Reply to the comments of the Reviewers

Levin Klein on behalf of the authors
IAG, University of Stuttgart

September 19, 2018

The authors would like to thank the reviewers for their efforts and constructive comments again. They are very much appreciated and incorporated into the revised manuscript.

As no comments of the 1st reviewer have to be answered, in this document only the comments given by the 2nd reviewer are addressed. The following formatting is chosen:

- The reviewer comments are marked in blue and italic.
- The reply by the authors is in black.
- A marked-up manuscript is added. Deleted sections are crossed out in red, added sections are marked in blue. As all changes in text are subject to the first comment or correction of typos, there is no additional marking.

General comments

1. *"However, before publication I suggest to carefully review once more the tense of the verbs throughout the text, as present and past tenses are still mixed. I believe that the paper readability would improve by simply switch all verbs describing the author's activities to present (why are the abstract and the conclusions using both present and past tenses? isn't present ok?), leaving the past tense only to referencing existing works."*

We agree with the reviewer and have to admit that usage of tenses was still not consistent. We revised the tenses in the paper again following his suggestion. In the wake of this we had to revise a few sentences.

2. *"Figures 1-2-4: they are to me too small and not easily readable, I'd enlarge them"*

We enlarged the mentioned figures.

3. *"Table 1: I'd use appropriate u.o.m. (tons, MNm, ...), but it might be a matter of taste"*

We would like to keep the units as they are. Data in SI units are used by most programs and one can just copy & paste the data to build up a foundation model. In the eyes of the authors, except mass, most of the values are hard to grasp and this won't get better by replacing e6 by M or e9 by G.

4. *"Figures 6-7-9-10-12-13-14: the two plots may align on the same line"*

We know that it seems unreasonable to have the figures on top of each other in the one column manuscript layout but they actually better fit into the final two column layout of the paper. The authors tried to align them in the same line as two-column figures but then two figures won't be on one side any more, moving them farer away from their actual appearance in the the text.

List of the relevant changes in the document (numbers refer to second submission):

- Revised tenses in the whole paper
- Corrected a few typos
- Enlarged figures 1, 2 and 4
- Added the correct diagrams in figures 9, 10 and 14 that were accidentally wrong in the first revision but correct in the first submission.

Advanced CFD-MBS coupling to assess low-frequency emissions from wind turbines

Levin Klein¹, Jonas Gude¹, Florian Wenz¹, Thorsten Lutz¹, and Ewald Krämer¹

¹Institute of Aerodynamics and Gas Dynamics, University of Stuttgart, Pfaffenwaldring 21, 70569 Stuttgart, Germany

Correspondence: Levin Klein (levin.klein@iag.uni-stuttgart.de)

Abstract. The low-frequency emissions from a generic 5MW wind turbine are investigated numerically. In order to regard airborne noise and structure-borne noise simultaneously a process chain ~~was-is~~ developed. It considers fluid-structure coupling (FSC) of a computational fluid dynamics (CFD) solver and a multibody simulations (MBS) solver as well as a Ffowcs Williams-Hawkings (FW-H) acoustic solver. The approach ~~was-is~~ applied to a generic 5MW turbine to get more insight into the sources and mechanisms of low-frequency emissions from wind turbines. For this purpose simulations with increasing complexity in terms of considered components in the CFD model, degrees of freedom in the structural model and inflow in the CFD model ~~were-are~~ conducted. Consistent with literature, it ~~has-been-is~~ found that aeroacoustic low-frequency emission is dominated by the blade-passing frequency harmonics. In the spectra of the tower base loads, which excite seismic emission, the structural eigenfrequencies become more prominent with increasing complexity of the model. The main source of low-frequency aeroacoustic emissions is the blade-tower interaction and the contribution of the tower as an acoustic emitter is stronger than the contribution of the rotor. Aerodynamic tower loads also significantly contribute to the external excitation acting on the structure of the wind turbine.

1 Introduction

Renewable sources of energy and especially wind power have seen a strong expansion in the last years. Even though the construction of large offshore wind farms is currently a strong focus, the potential of onshore wind turbines by opening up new, previously unused areas and repowering of existing sites is still significant. With regard to the acceptance and the fulfillment of stricter legal requirements concerning noise and vibrations, the research on low-frequency emissions from wind turbines gains importance.

1.1 Emissions from wind turbines

As wind turbines are counted among the tallest machines on the planet that work in an uncontrolled outside environment, noise and vibration emissions occur in a broad frequency range. While sources of acoustic wind turbine emission in the audible range are widely researched and understood and different methods are applied to reduce aerodynamic and mechanical noise (Liu, 2017), there is much less known about low-frequency emissions from wind turbines. Many publications about low-frequency emissions from wind turbines concentrate on the impact on seismic measurements. The emitted ground motion signals from

wind turbines are measured by local seismic stations built for detection of events with small magnitudes like far away earthquakes or nuclear weapons tests. Zieger and Ritter (2018) observed an increase of amplitudes in a frequency range from 0.5 Hz to 10 Hz dependent of the rotational speed of the turbine and thus wind speed at a distance of 5.5 km away from a wind turbine. This confirms the measurements by Stammeler and Ceranna (2016) and Styles et al. (2005) who found that nearby wind turbines reduce the sensitivity of seismic stations as they introduce wind dependence into the measured noise spectra.

Acoustic measurements in the low-frequency range 3.3 km from a wind farm show discrete peaks at the blade-passing frequency (BPF) and its higher harmonics below 20 Hz (Hansen et al., 2017). This was also observed by Pilger and Ceranna (2017) who evaluated the data obtained by a microbarometer array for infrasound detection located in northern Germany. Zajamšek et al. (2016) compared outdoor and indoor measurements close to an Australian wind farm and found the same tonal character in the noise spectra. Hence, the blade-tower interaction is seen to be responsible for aeroacoustic low-frequency noise of wind farms (Van den Berg, 2005).

The scope of research on low-frequency noise from wind turbines is often its impact on human beings. Knopper et al. (2014) conclude from their literature survey that human health is not likely to be affected by low-frequency noise and infrasound from wind turbines. Turnbull et al. (2012) state that the measured level of infrasound within two Australian wind farms was similar to that measured in urban and coastal areas and near other engineered noise sources.

1.2 Numerical approaches on low frequency noise

For an optimization of the structure and foundations of future wind turbines as well as for the assessment of the impact of low-frequency noise and low-frequency seismic vibrations on the environment, reliable methods for the prediction of emissions are of great importance. Gortsas et al. (2017) performed a numerical study to calculate wave propagation using the Boundary Element Method. They developed a model which considers the mentioned seismic vibrations as well as the low-frequency noise in air and even allows a prediction of the sound pressure level (SPL) inside a generic building. But, as this model is only capable to calculate the propagation, reliable input data representing the airborne and structure-borne emissions from the wind turbine has to be provided. CFD simulations including fluid-structure interaction (FSI) are capable of providing both. Thus, Gortsas et al. used data made available by the authors of the present paper.

There are few studies on the modelling of aeroacoustic low-frequency emission from wind turbines. In the 1980s the NASA developed a code for predicting low-frequency wind turbine noise based on Lowson's acoustic equation applied on rotor forces (Viterna, 1981). Madsen (2010) presented a Blade Element Momentum (BEM) based investigation of low-frequency noise that uses the same theory for the aeroacoustic model. CFD simulations combined with the FW-H propagation method have been applied by Ghasemian and Nejat (2015) and Bozorgi et al. (2018) to assess low-frequency noise of wind turbine rotors. While Madsen considers the influence of the tower on the rotor aerodynamics, Ghasemian and Nejat and Bozorgi et al. study the isolated rotor. Yauwenas et al. (2017) investigated the blade-passage noise of a generic model turbine numerically using CFD and Curle's acoustic analogy. They found a significant contribution of the induced pressure fluctuations on the tower to the tonal blade-passage noise which was validated with experimental measurements.

In recent years, CFD based fluid-structure coupling has been applied frequently for the investigation of wind turbines. Li et al.

(2017) presented a framework of a wind turbine aero-servo-elastic simulation including flexible blades and tower which allows motion of all turbine components. In their approach, controllers for torque and blade pitch are included as well and they focus their studies on the impact of FSI on aerodynamic rotor loads, drive train dynamics, controllers and wake. Streiner et al. (2008) developed a coupling of the CFD code *FLOWer* to the multibody solver (MBS) *SIMPack* with the capability to couple isolated
5 wind turbine rotors.

1.3 Scope and objectives

A totally revised *FLOWer-SIMPack* coupling is revealed in the present paper with the potential to take into account more degrees of freedom, like tower deformation or changes in rotational speed in the structural model and their impact on aerodynamics and aeroacoustics, respectively. Together with the already existing process chain, fully coupled CFD simulations under
10 realistic turbulent inflow conditions can be conducted, providing both airborne and structure-borne emissions simultaneously. A FW-H in-house code is applied to calculate aeroacoustic immission at distant observers while tower base loads represent the structure-borne emission. The aim of the present paper is to identify the sources of low-frequency emissions and to investigate the impact of the complexity of the numerical model on the calculated low-frequency emissions from a generic 5 MW wind turbine. The complexity of the model is increased from a rotor only simulation with uniform inflow to a coupled simulation
15 including blade, tower and foundation dynamics with turbulent atmospheric boundary layer. The spectra of tower base loads and acoustic immissions for overall 7 cases are compared in a frequency range from 0.1 to 25 Hz for evaluation.

2 Numerical process chain

A high fidelity process chain based on multiple solvers ~~was~~^{is} established for the investigation of low-frequency emissions from wind turbines. It consists of the CFD solver *FLOWer*, the MBS solver *SIMPack* and the FW-H solver *ACCO*. A coupling
20 between *FLOWer* and *SIMPack* was developed to generate high fidelity time series of surface pressure distribution on the turbine and structural loads (forces and moments) acting on the foundation of the turbine. Using the CFD results, the aeroacoustic signal at distant, predefined observer positions is computed by means of *ACCO*.

2.1 CFD solver

FLOWer is a compressible, dual time stepping, block structured Reynolds-averaged Navier-Stokes (RANS) solver developed
25 by German Aerospace Center (DLR) (Kroll et al., 2000). The usage of independent grids for bodies and background is enabled by the overlapping grid technique *CHIMERA*, one of *FLOWer's* main features. The solver is continuously extended at Institute of Aerodynamic and Gas Dynamics (IAG) regarding functionality and performance, including, amongst others, the higher order finite difference weighted essentially non-oscillatory (WENO) scheme (Kowarsch et al., 2013), Dirichlet boundary condition to apply arbitrary unsteady inflow, a body forces approach to superimpose turbulence (Schulz et al., 2016b) and various DES
30 schemes (Weihsing et al., 2016). The capability of *FLOWer* for wind turbine simulations has been shown in several projects.

The interaction of a wind turbine in complex terrain with atmospheric turbulence was investigated by Schulz et al. (2016a) and code to code comparisons were recently conducted in the European AVATAR project (Schepers et al., 2016).

2.2 Multibody solver

SIMPACK is a commercial non-linear MBS solver that can be applied to simulate dynamic systems consisting of rigid and flexible bodies. Flexible turbine components like tower and blades are modeled with linear or nonlinear beam theory. The kinematics between the components are defined by joint elements and internal forces can be considered. There are two ways to apply external forces such as aerodynamic forces, either by built-in interfaces or by programmable user routines. Controllers can also be integrated. *SIMPACK* has been recently applied by industry and research groups for the simulation of wind turbines, examples can be found in (Luhmann et al., 2017; Jassmann et al., 2014).

2.3 Fluid-structure interaction

To take the influence of unsteady structural deformation on the aerodynamics into account, a revised coupling between *FLOWer* and *SIMPACK* ~~was~~is implemented. The new approach generally allows coupling of slender beam like structures and is not limited to rotor blades or even wind turbines. Combined coupling of rotating and non-rotating parts can be applied and the deformation of adjacent structures is considered. Furthermore, coupling is not restricted to flexible deformations but also rigid body motions (rotations and translations) can be realized. In the application of wind turbines e.g. pitch motions and changes in rotational speed of the rotor can be transferred from the MBS solver to the CFD solver.

For the technical realization, an existing interface that was developed to couple *SIMPACK* with the fluid solver *ANSYS CFX* for the investigation of a tidal current turbine (Arnold et al., 2013) ~~was~~is extended. Furthermore, libraries for grid deformation and load integration which were recently developed and integrated into *FLOWer* (Schuff et al., 2014; Kranzinger et al., 2016) ~~had-to-be~~are extended for the coupling with *SIMPACK*. ~~Besides-the-Without restrictions in~~ functionality, the ~~main-target-of-the implementation-was-to-keep-the~~ set-up of the coupling is kept simple and the dependencies between MBS and CFD models are low. Thus, resolution of CFD and MBS model are independent of each other which allows a fast and easy adjustment and replacement of MBS structures or CFD meshes. Furthermore, the new coupling can be restarted, allowing much longer simulation times if *FLOWer* runs on clusters with limited job duration. It was already successfully applied on the blade of a generic 10 MW turbine for comparison reasons by Sayed et al. (2016) who implemented a coupling of *FLOWer* to the structural dynamics solver *Carat++*.

2.3.1 General functionality

The developed coupling is a partitioned approach, where two independent solvers run simultaneously on different machines and exchange data via Secure Shell (SSH) connection at discrete positions, so called markers. The markers are positioned inside the bodies. While rigid bodies have only one marker, flexible bodies like rotor blades have several markers that are distributed along the beam. On the one hand, deflections and rotations of these markers relative to their non-deformed position

are computed by *SIMPACK*. On the other hand, aerodynamic forces and moments acting on these markers are calculated in *FLOWer*. For each structure that is coupled, a communication coordinate system is defined that has to be in the same position and same orientation in both models at all times. It does not have to be fixed, but can be rotating or translating in a predefined way. All data concerning the respective structure is communicated in this coordinate system.

5 2.3.2 Mesh deformation

The task of the deformation library implemented in *FLOWer* is to apply the deformations of the markers on the corresponding CFD surfaces and to deform the surrounding volume mesh accordingly. The surface is represented by a point cloud which is generated from the CFD mesh. For rigid structures only one marker is used and all surface cloud points perform a rigid body motion based on the translation and rotation of this marker. A cubic spline interpolation is applied for the mapping of flexible structures (beams) consisting of more than one marker. The deformation of each surface cloud point is then realized as rigid body motion based on the corresponding positions along the beam. While a complete spline approach is used for the deflections, taking the rotation at the end points into account, the rotations and the non-deformed marker positions are interpolated using natural splines. A similar approach has been presented by Arnold et al. (2013). Finally, the volume grids are deformed based on the deformation of the point cloud using radial basis functions. To ensure correct overlapping of deformed meshes, holes associated to the deformed surface can also be deformed.

2.3.3 Load integration

The load library implemented in *FLOWer* enables the calculation of aerodynamic loads on grid surfaces by integration of friction and pressure over the cell faces. This is also necessary for the coupling to *SIMPACK*, as there is no surface in the structural model and the aerodynamic forces have to be mapped to the discrete marker positions. For this purpose, the CFD surface is divided into segments based on the deformed marker positions. For each of these segments, loads are integrated and afterwards assigned to the respective markers. Moments are calculated with respect to the origin of the corresponding communication coordinate system. For structures with only one marker, loads are integrated over the whole CFD surface of the respective structure.

2.3.4 Communication interface

The communication is realized by means of files. Data files contain deformations or loads and status files indicate that the data file is ready to be read. While *SIMPACK* is running on a local Windows machine, *FLOWer* is usually executed in parallel mode on a high performance computing (HPC) system running on Linux. A portable communication script in Windows inherent scripting language PowerShell enables fast and reliable communication between the two solvers. The Linux machine is accessed using a SSH connection via the Windows Secure Copy (WinSCP) client.

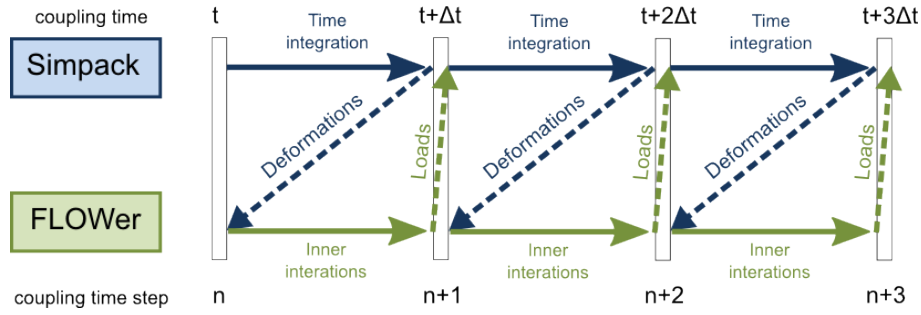


Figure 1. Explicit coupling scheme of the *FLOWer-SIMPack* coupling.

2.3.5 Coupling scheme

In the presented work, an explicit coupling scheme is applied. The size of the coupling time step is equal to the physical *FLOWer* time step and remains constant throughout the simulation. Both solvers are running in a sequential way, waiting for the other solver to reach the next time step and to send communication data. *SIMPack* is running one time step ahead doing time integration with the aerodynamic loads that *FLOWer* computed at the end of the previous time step (Figure 1).

2.4 Acoustic solver

Acoustic immission at arbitrary observer locations is calculated by means of the in-house FW-H solver *ACCO*. Pressure and velocities on surfaces enclosing the noise sources are evaluated at each time step of the transient CFD solution, including velocities due to deformation, translation and rotation. For the present study, the surfaces used for the acoustic analysis are identical with the physical surfaces of the turbine (rotor, tower, hub etc.). Volume sources generated by free-flow turbulence are neglected, which is justified for low mach number flow because quadrupole volume noise is proportional to Ma^7 . This approach was validated for a rod-cylinder configuration and an airfoil in turbulent flow (Lutz et al., 2015; Illg et al., 2015). The acoustic monopole and dipole contributions to the observer sound pressure level (SPL) are computed by means of the Ffowcs Williams-Hawkings (FW-H) equation. Its left-hand side is the wave equation which describes the transmission of sound to the observer, presuming undisturbed propagation and observers located in the acoustic far field. Hence, ground reflections and non-linear propagation due to atmospheric layering and turbulence are not taken into account. The acoustic far field is defined by the presence of a fully developed wave front and thus starts several wave lengths away from the source. Parallel execution of *ACCO* allows the computation of noise carpets consisting of several thousand observer locations.

The application of the FW-H analogy allows evaluation of the contribution of selected components of the wind turbine to SPL by excluding surfaces of particular components (e.g. tower) from the analysis.

2.5 Computational set-up

2.5.1 The turbine

The examined turbine is based on the NREL 5 MW turbine (Jonkman et al., 2009) and was slightly modified in the *OFFWINDTECH* project (Bekiropoulos et al., 2013). The main modifications concern the rated conditions which were changed to a rotational speed of 11.7RPM and a pitch angle of -2.29° at a wind speed at hub height of 11.3ms^{-1} . The turbine is investigated at rated conditions in an onshore configuration with a hub height of 90m, a rotor diameter of 126m with a tilt angle of 5° and a precone angle of 2.5° . The original tower with a bottom diameter of 6m and a top diameter of 3.87m is used.

2.5.2 CFD model

The CFD model of the *OFFWINDTECH* turbine consists of ten independent body meshes, that are embedded in a Cartesian hanging grid node background mesh using the *CHIMERA* technique. Blades, hub, nacelle and tower are considered in the simulation with fully resolved boundary layer ($y^+ \leq 1$). No gaps are left between the components of the turbine, as blade-hub connectors and a hub-nacelle connector are included in the CFD mesh (Figure 2). Blades are meshed in a C-H-mesh topology with 120 cells in radial direction and 180 cells around the airfoil, summing up to approximately 5.3 million cells per blade. Two different Cartesian background grids with hanging grid nodes are used. One for the case with prescribed atmospheric turbulence where the mesh is additionally refined to a cell size of 1m^3 upstream of the turbine (64.5 million cells) and another for the case without atmospheric turbulence where only the mesh close to the turbine is refined (20.8 million cells). The computational domain is approximately 48.8 rotor radii (R) long ($12.7R$ upstream of the rotor plane), approximately $24.4R$ wide and has a height of approximately $16.2R$. According to a previous study using *FLOWer* (Sayed et al., 2015), the background grids expand more than sufficient in all directions to avoid influence on the flow field around the turbine. Overall the two set-ups consist of 86 million (fine) respectively 42 million cells (coarse). Concerning inflow three different cases are regarded in the present study. Uniform inflow, steady atmospheric boundary layer and turbulent atmospheric boundary layer. An exponent of 0.19 is applied for the power law profile describing the steady atmospheric boundary layer, keeping the wind speed at hub height at 11.3ms^{-1} . Atmospheric turbulence with a reference length scale of 42m, created using Mann's model (Mann, 1994), is introduced into the flow field using body forces 16m downstream of the inlet, superimposing the steady boundary layer profile. The resulting turbulence level at the turbine position is 16%. Unsteady RANS (URANS) simulations are applied with a second order dual time stepping scheme for temporal discretisation. The second order central discretisation with the Jameson-Schmidt-Turkel (JST) artificial dissipation term is used for spatial discretisation in body meshes and fifth order WENO scheme is applied on the background mesh in order to reduce dissipation of vortices. Menter-SST (Menter, 1994) ~~was~~is deployed for turbulence modelling. A physical time step corresponding to 0.75° azimuth ($\approx 0.01068\text{s}$) with 100 inner iterations is applied for the evaluated part of the simulations.

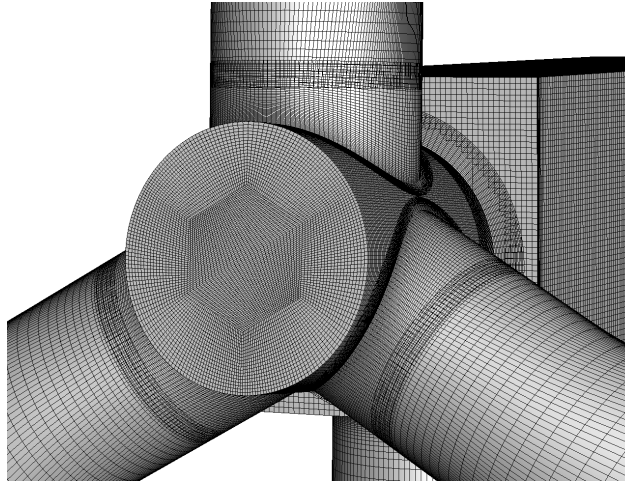


Figure 2. CFD surface mesh, showing the connection of hub, blades and nacelle with overlapping meshes.

Table 1. Details on the foundation of the wind turbine, similar to Gortsas et al. (2017).

Mass	1.888e6 kg
Inertia x, y	82.705e6 kgm ²
Inertia z	88.529e6 kgm ²
Stiffness x, y	8.554e9 Nm ⁻¹
Stiffness z	7.332e9 Nm ⁻¹
Rotational stiffness x, y	559e9 Nm · rad ⁻¹
Rotational stiffness z	559e9 Nm · rad ⁻¹
Damping x, y	240e6 Nsm ⁻¹
Damping z	325e6 Nsm ⁻¹
Rotational damping x, y	5.035e9 Nms · rad ⁻¹
Rotational damping z	4.180e9 Nms · rad ⁻¹

2.5.3 Structural model

The *SIMPACK* model of the *OFFWINDTECH* turbine was built by Matha et al. (2010). The blades are modelled non-linear by using multiple flexible bodies per blade. The structural properties of the tower are adopted from the NREL 5MW turbine (Jonkman et al., 2009) taking 20 modes into account. Hub and nacelle are defined as rigid bodies. The foundation is modelled

5 as rigid body connected to the ground with a spring-damper system. Details can be found in Table 1.

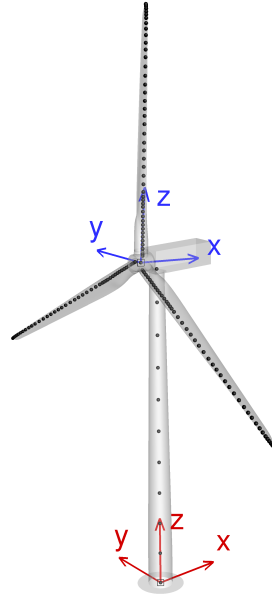


Figure 3. CFD surface of turbine including markers for coupling with *SIMPACK*. Rotating hub coordinate system is shown in blue and tower base coordinate system in red.

2.5.4 FSI setup

160 markers are used for the fluid structure coupling of the *OFFWINDTECH* turbine (Figure 3), 49 markers for each blade, 11 markers for the tower, and nacelle and hub with one marker each. Since in the structural model and the CFD model a fixed rotational speed is prescribed, a rotating communication coordinate system in the center of the hub is used for the rotating parts. The communication for tower and nacelle is performed in a fixed coordinate system placed at the tower base (Figure 3). In the *SIMPACK* model of the turbine, additional rigid bodies are created for the definition of the undeformed markers. The corresponding moving markers are attached to the flexible structures of the turbine. With this approach the measured deformations between deformed and undeformed markers are composed of flexible deformations of the body itself plus rigid body motion due to deformation or motion of the adjacent body.

2.5.5 Simulation cases

In Table 2 all regarded simulation cases are listed. For evaluation they are assigned to three studies. In the first study, no FSI is considered and thus all turbine components are kept rigid. The influences of the presence of the tower and the distance of the blade to the tower are evaluated at uniform inflow conditions by comparing LC1, LC2 and LC2_FSC1SD. In case LC2_FSC1SD the blade deformation is equal to the averaged blade deformation of case LC2_FSC1 to obtain a realistically deformed shape of the blades with reduced distance between blades and tower. In a second study the degrees of freedom of the structural model are increased at uniform inflow conditions. Three cases are compared: the rigid case with steady deformed

Table 2. Definition of simulation cases, ordered with increasing complexity.

Case name	Inflow	CFD structures	Flexible structures	Background mesh
LC1	uniform	rotor	none	coarse
LC2	uniform	rotor, nacelle, tower	none	coarse
LC2_FSC1SD	uniform	rotor, nacelle, tower	rotor blades SD	coarse
LC2_FSC1	uniform	rotor, nacelle, tower	rotor blades	coarse
LC2_FSC3	uniform	rotor, nacelle, tower	rotor blades, tower, foundation	coarse
LC3_FSC3	steady ABL	rotor, nacelle, tower	rotor blades, tower, foundation	fine
LC4_FSC3	turbulent ABL	rotor, nacelle, tower	rotor blades, tower, foundation	fine

ABL, atmospheric boundary layer; SD, steady deformation.

blades (LC2_FSC1SD), a case with flexible blades (LC2_FSC1) and a case with flexible blades as well as a flexible tower and foundation (LC2_FSC3). In the third study, the inflow conditions are varied, keeping the structural model the same. Case LC2_FSC3 is used as reference. A steady atmospheric boundary layer (ABL) is prescribed at the inlet by means of a power law inflow profile in case LC3_FSC3. This steady ABL is superposed with velocity fluctuations modelling a turbulent atmospheric boundary layer in case LC4_FSC3.

2.6 Evaluation

The aim of the simulation chain is to model airborne and structure-borne emissions simultaneously by evaluating acoustic immission at distant observers and load fluctuations at the tower base. In the fluid-structure coupled simulations tower base loads are evaluated directly in the structural model at the interface between tower and foundation, whereas in the non-coupled simulations aerodynamic loads are computed from CFD results. In both cases the tower base loads are presented with respect to the tower base coordinate system which is shown in Figure 3. The temporal resolution of the data is equal to the coupling time step. To achieve the same temporal resolution in the acoustic emission, each time step a CFD surface solution is saved temporally as input for the acoustic simulations.

Acoustic simulations using *ACCO* are conducted to calculate the immission at a carpet of observers on the ground surrounding the turbine. Figure 4 shows the 3600 observers located on 20 concentric rings around the turbine at radial positions of 100m to 2000m with a radial resolution of 100m and a circumferential resolution of 2°. Unweighted SPL is calculated from sound pressure time series at the observers with a reference sound pressure of 20μPa. The sound propagation and directivity for discrete frequencies can be evaluated by plotting the SPL contour on the ground. Four observers at a distance of 1000m to the turbine are chosen for detailed evaluation of SPL spectra (large dots in Figure 4). Prior to frequency analyses by means of fast Fourier transform (FFT), the time series signals of loads and sound pressure are cut to multiples of one rotational period of the turbine in order to supply a preferably periodical signal to the FFT and to avoid influence of start-up effects. In coupled simulations, the first two revolutions are excluded from evaluation. For case LC4_FSC3 14 revolutions and for all other cases

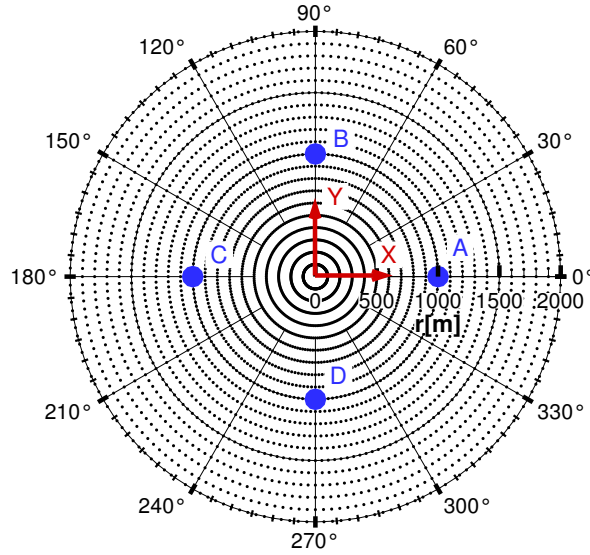


Figure 4. Observer positions for evaluation of aero acoustic emissions. Tower base coordinate system shown in red. View from above, turbine in the center, wind from left.

8 revolutions are evaluated. As the sampling rate is equal to the physical time step of the simulation, the highest resolved frequency (Nyquist frequency) is 46.8 Hz.

3 Results

3.1 Rigid simulations

- 5 In this section three non-fluid-structure coupled cases are compared at uniform inflow conditions. As reference the rotor only case (LC1) is regarded where unsteady effects on the loads only result from the tilt of the rotor, the proximity to the ground and unsteady flow separation. In a second case, the tower is considered (LC2) and in a third case steady deformation is applied to the blades (LC2_FSC1SD). The CFD surfaces of all three cases are shown in Figure 5.

3.1.1 Tower base loads

- 10 In the non-fluid-structure coupled cases no unsteady structural forces occur as all structures are rigid. Thus, load fluctuation only arise from aerodynamics. Figure 6 shows the spectra of M_x and M_y of all three cases with respect to the tower base coordinate system (moment reference point). No distinctive peaks can be found in the spectra of LC1. After including the tower in the simulation (LC2), sharp peaks at the blade-passing frequency and its higher harmonics appear with significantly increased amplitudes up to a frequency of approximately 10 Hz. Regarding M_x , a general increase of the amplitudes below
- 15 BPF is present with a peak at approximately 0.3 Hz caused by vortex shedding, which will be shown later. In LC2_FSC2SD

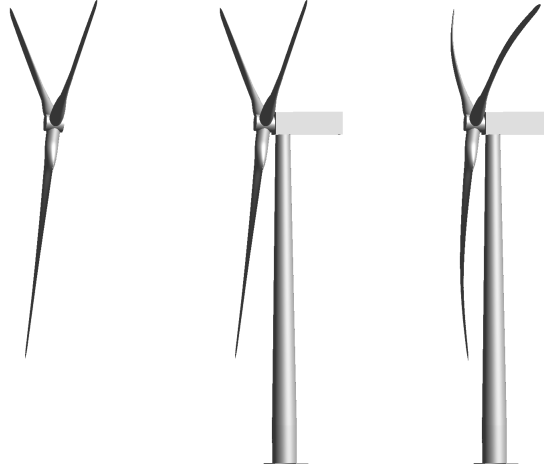


Figure 5. CFD turbine surfaces of cases LC1 (left), LC2 (middle) and LC2_FSC1SD (right). Snapshot with one blade in front of the tower at 180° azimuth.

the distance between tower and blades is reduced due to the steady deformation of the blades. This leads to an increase of the amplitudes at blade-passing harmonics. The relative increase is stronger for higher frequencies. The amplitude of M_y is increased by more than 50% for frequencies between 5 Hz and 10 Hz. For M_x the amplitude at BPF stays almost constant while amplitudes are increased for the higher harmonics compared to case LC2. The maximum amplitude of M_x is shifted to the second harmonic of BPF. The amplitudes of M_z are much lower compared to the other load components and therefore are not shown.

The composition of the aerodynamic loads ~~was~~^{is} investigated in detail for case LC2_FSC1SD. Therefore, aerodynamic loads on rotor and tower were evaluated separately with respect to tower base coordinate system (moment reference point). Figure 7 shows the resulting spectra. The peak amplitudes of the tower spectra are dominant over the whole frequency range. Especially for M_x the tower load amplitudes are up to ten times higher compared to the rotor load amplitudes. For M_x the general level below BPF is higher in the tower load spectra. This can be interpreted as the impact of unsteady flow separation at the tower induced by vortex shedding. This phenomenon, known as von Kármán vortex street, leads to unsteady forces on blunt bodies with a frequency described by the dimensionless Strouhal number. Assuming an inflow velocity of 8 ms^{-1} (reduced due to induction of the rotor) results in a Reynolds number of $2.8 \cdot 10^6$ with respect to the mean diameter of the tower (4.9 m). The corresponding Strouhal number of approx. 0.24 leads to a theoretical vortex shedding frequency of 0.38 Hz. As both, diameter and inflow velocity are not constant over the length of the tower and inflow is disturbed by the rotor, a broader range of vortex shedding frequencies can be expected as it is present in the spectrum of M_x .

The surface pressure amplitudes on the tower are displayed in Figure 8 at two different frequencies. At BPF (0.585 Hz) as well as at 0.292 Hz where the spectra of M_x have a local maximum. A strong peak appears at BPF at the front of the tower shifted to the side of the approaching blade. The symmetric shape of the pressure amplitude distribution and the higher amplitudes at

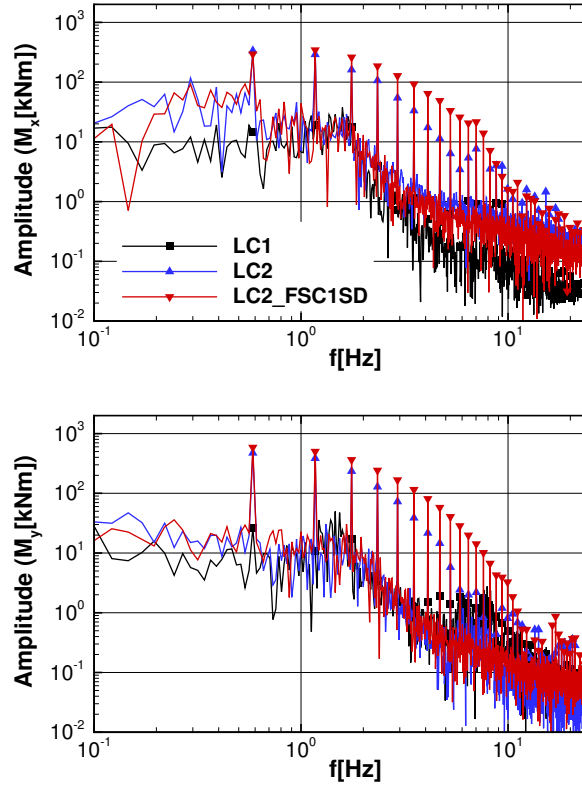


Figure 6. Spectra of aerodynamic loads with respect to tower base (moment reference point) for cases LC1, LC2 and LC2_FSC1SD.

the rear side of the tower at 0.292 Hz can very likely be associated with vortex shedding creating the peak in the load spectra. These observations support the idea of the superposition of blade-passing effects and vortex shedding at the tower.

3.1.2 Aeroacoustic emission

Figure 9 shows the spectra of the SPL for observers C and D for the cases LC1, LC2 and LC2_FSC1SD. The immission at observer A is very similar to the one at observer C. The same applies to observers B and D. The maximum SPL for LC1, the case without tower, occurs at observer B at BPF and is the only prominent peak. The emission at this frequency shows a strong directivity, as the amplitude is much higher at the sides than upstream and downstream of the turbine. The presence of the tower (LC2 and LC2_FSC1SD) causes a massive increase of amplitudes at the BPF harmonics while the broadband noise level stays low. The highest peak appears upstream of the turbine at observer C at the third BPF harmonic and is approx. 4 dB higher in case LC2_FSC1SD compared to case LC2. The spectra of case LC2 show only a weak directivity for the BPF harmonics as the amplitudes at the upstream and downstream observers are just slightly lower than at the side observers. A stronger directivity can be observed for case LC2_FSC1SD at BPF where the amplitudes are clearly higher at the upstream

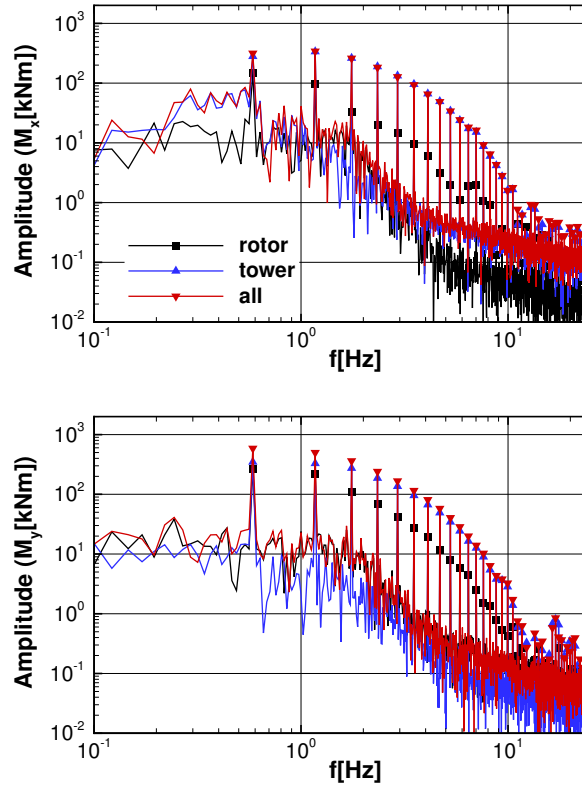


Figure 7. Spectra of aerodynamic loads with respect to tower base (moment reference point) for case LC2_FSC1SD. Comparison of loads on rotor, tower and all surfaces.

and downstream observer. Compared to case LC1 the SPL at frequencies below BPF also rises, but only at observer positions B and D. Comparing LC2_FSC1SD to LC2, the increase of amplitudes due to reduced blade-tower distance is most prominent between fifth and tenth harmonic of BPF where it amounts to more than 10 dB. The SPL peaks drop below 20 dB at around 15 Hz even for case LC2_FSC1SD. To examine the aeroacoustic noise emission in detail, the noise emission originating from

5 tower and rotor surfaces ~~were~~are evaluated separately for case LC2_FSC1SD. Figure 10 shows the SPL spectra at observer positions C and D. It can be seen that for all BPF harmonics the calculated SPL emitted by the tower is higher than the one emitted by the rotor. The global maximum of the rotor induced immission is about 8 dB lower compared to the global peak of the tower induced immission, both occur at observer C. The emission from the rotor shows a strong directivity to the upstream and downstream direction, with clearly lower amplitudes at observers B and D. At BPF, the emission of the tower shows the

10 same directivity, yet less pronounced, whereas the directional differences at higher harmonics of BPF are marginal. The SPL increase in the plane of rotation for frequencies below BPF is mainly caused by the tower emission. This is similar to the increase of amplitudes in the tower base load spectra for M_x caused by pressure fluctuations on the tower surface which ~~was~~

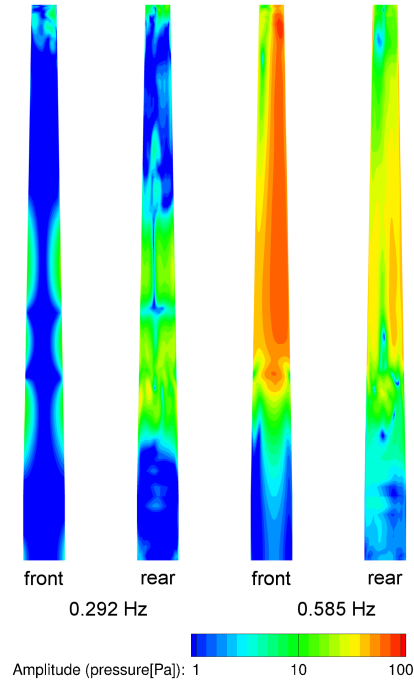


Figure 8. Pressure amplitudes on CFD tower surface of case LC2_FSC1SD at 0.292 Hz (left) and blade-passing frequency (0.585 Hz) (right).

is described in the previous section. Thus SPL increase at frequencies below BPF is very likely induced by surface pressure fluctuations due to vortex shedding at the tower, too. Looking at the noise carpet for the third BPF harmonic in Figure 11 gives more insight into the directivity. The rotor emission is strongly directed towards 20° and 190° , whereas for the tower emission only a small shift of the generally concentric shape towards 220° is present. The superposed signal shows a directivity towards $180^\circ/350^\circ$ and is slightly biased upstream. The result also shows that the shape of the SPL isolines beyond approx. 500m radius around the turbine is independent of the radius. The same behaviour can be observed for the other harmonics of BPF. Thus, the previously regarded observers at 1000m radius are clearly out of near field effects for BPF harmonics.

3.2 Influence of degrees of freedom at uniform inflow

In the second study the cases LC2_FSC1SD, LC2_FSC1 and LC2_FSC3 are regarded. The aim is to evaluate the influence of the degrees of freedom of the structural model on the low-frequency emissions from the wind turbine. Case LC2_FSC1SD has zero degrees of freedom but considers the mean blade deformation of case LC2_FSC1 where only the rotor blades are flexible, thus it has been chosen as reference case for this study.

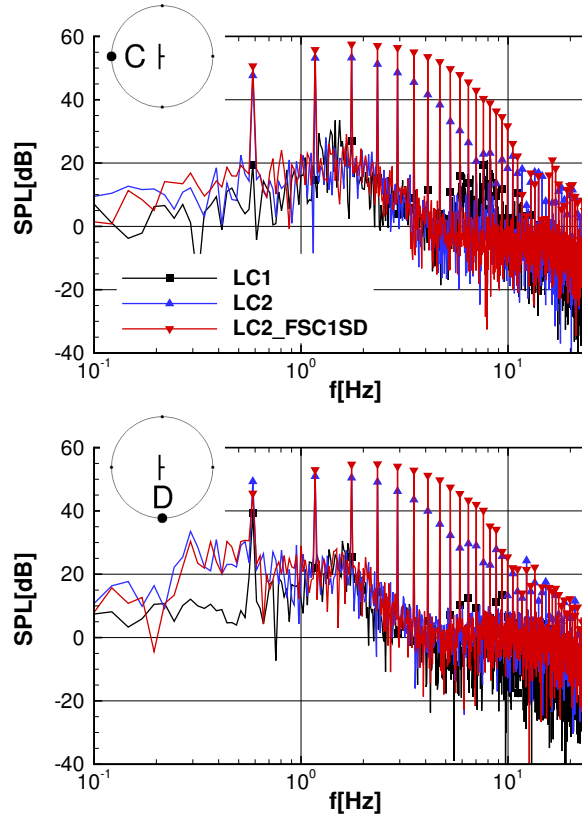


Figure 9. Spectra of unweighted SPL (reference sound pressure of $20\mu\text{Pa}$) at two observer positions on the ground with a distance of 1000 m to the turbine for cases LC1, LC2 and LC2_FSC1SD.

3.2.1 Tower base loads

The spectra of the tower base loads for all three cases are plotted in Figure 12. The flexibility of the rotor blades in case LC2_FSC1 has mainly an impact on the amplitudes at harmonics of BPF. M_x amplitudes increase with the highest peaks at first and second harmonic of BPF rising by more than 30% compared to case LC2_FSC1SD. On the contrary a decrease is observed for M_y , especially for the second and third harmonic of BPF. There are two effects which go hand in hand both having an influence on the tower base loads. By setting the blades flexible, on the one hand, gravitational forces and inertial forces start acting and on the other hand, aerodynamic forces change due to unsteady deflection of the blades. The mean blade tip deflection applied in case LC2_FSC1SD is 6.34m out of plane (OOP) and -0.58m in plane (IP). In case LC2_FSC1 the OOP deflection reaches its maximum of approximately 6.46m when the blade is passing the tower, just before the blade deformation is reduced due to the tower blockage. The IP deflection oscillates between -0.13m and -1.02m , which is mainly caused by the gravitational force that makes the blade bend downwards. Due to the inertia of the blade, the IP blade tip velocity reaches its maximum just after the tower passage. This increases the absolute velocity of the blade when passing the tower and the

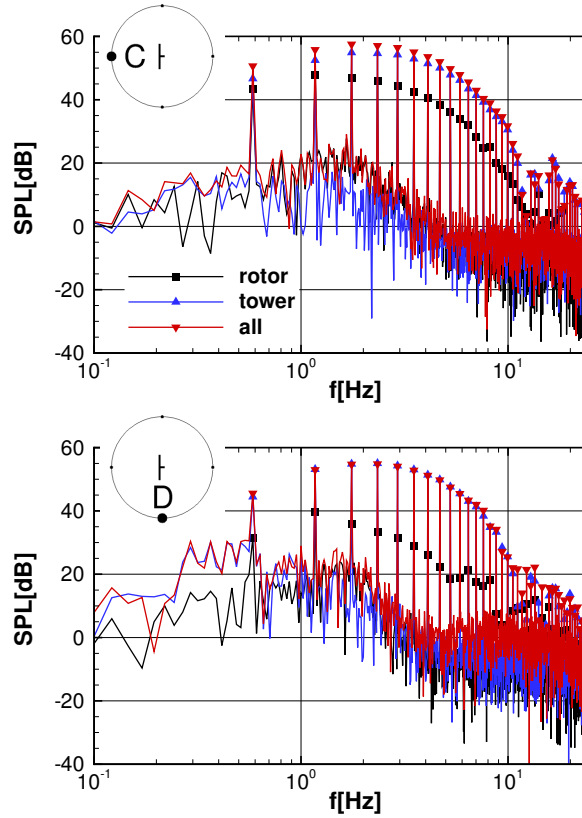


Figure 10. Spectra of unweighted SPL (reference sound pressure of $20\mu\text{Pa}$) at two observer positions on the ground with a distance of 1000 m to the turbine for case LC2_FSC1SD. Comparison of noise emitted from rotor, tower and all surfaces.

relative flow velocity on the blade. On the other hand, the swinging of the blades mainly induces structural forces in y and z direction which explains the increase of M_x amplitudes at BPF.

The enabled flexibility of the tower in case LC2_FSC3 shows a much stronger impact on the tower base loads compared to case LC2_FSC1 as it significantly changes the structural eigenmodes of the turbine. In M_x and M_y , the amplitudes at first, second and third harmonics of BPF are clearly reduced. Especially the reduction at BPF is remarkable, over 70% for both loads. For M_x the amplitude at BPF even drops to the level of the broadband fluctuations of the other two cases. For M_y the maximum amplitude shifts to the fifth harmonic of BPF which is close to three structural eigenfrequencies of the turbine. For M_x it occurs at approximately 0.32 Hz which matches with the first side-side bending mode of the tower. An increase of the amplitudes in the frequency range around 0.32 Hz can also be observed for M_y , yet less pronounced. The first fore-aft bending mode is also at this frequency but the aerodynamic damping is much higher compared to the side-side direction.

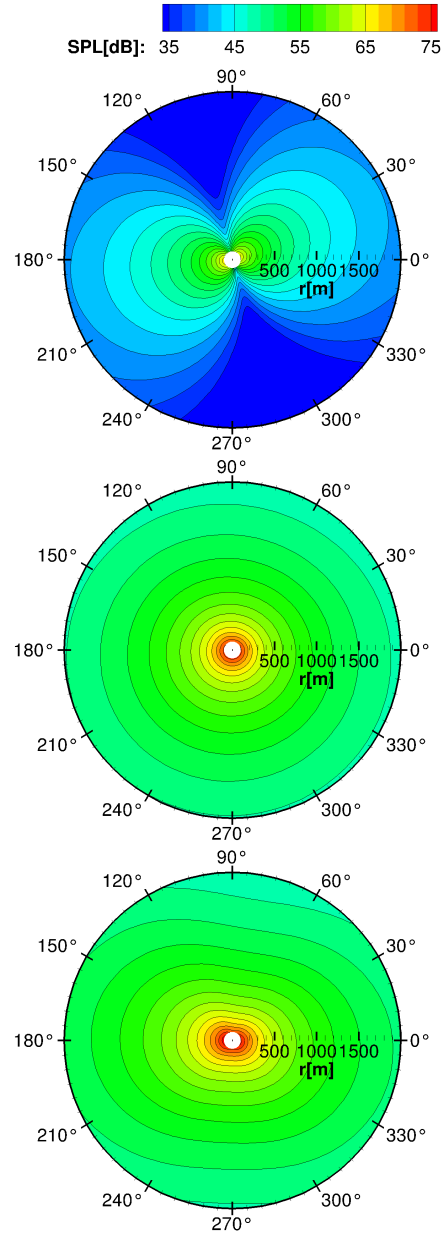


Figure 11. Unweighted SPL (reference sound pressure of $20\mu\text{Pa}$) at third BPF harmonic (1.755 Hz) on ground around the turbine for case LC2_FSC1SD. Aeroacoustic emission from rotor (top), tower (middle) and all surfaces (bottom). ΔSPL between black contour lines is 2 dB.

3.2.2 Aeroacoustic emission

The increase of degrees of freedom in the structural model only marginally influences the SPL at the observers. The spectrum at observer position C shows a small decrease of the amplitude at BPF while there is a small increase at second to sixth

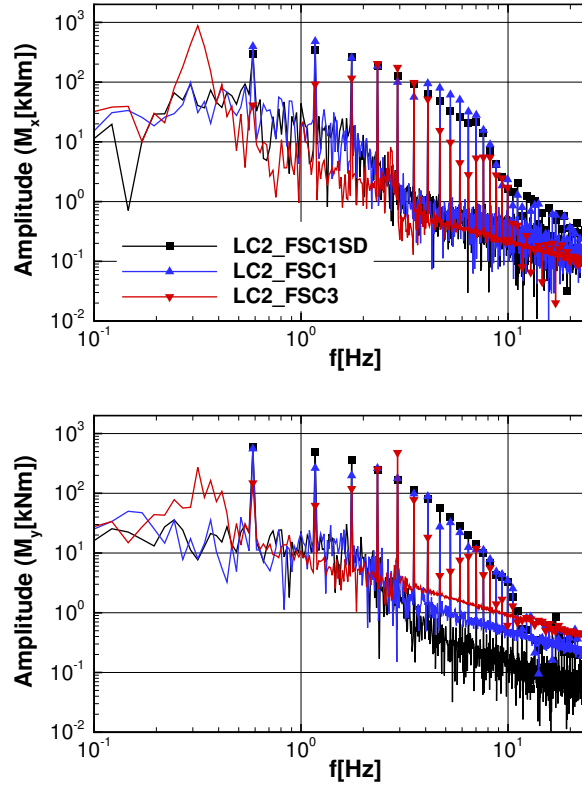


Figure 12. Spectra of tower base bending moments for the cases LC2_FSC1SD, LC2_FSC1 and LC2_FSC3.

harmonics of BPF. However, observer D shows a small increase at BPF while amplitudes of higher harmonics are almost unchanged. Generally, the effect is a bit stronger for case LC2_FSC3. These small changes might be an impact of the slightly reduced blade-tower distance and the increased blade tip velocity when the blade passes the tower which ~~was~~is reported in the previous section. For frequencies below BPF, the maximum amplitude increases slightly which could be induced by the structural eigenmodes of the turbine as well as by the impact of vortex shedding at the tower.

3.3 Influence of inflow

In the last study the influence of inflow conditions on the tower base loads and on the aeroacoustic emission is investigated. While uniform inflow ~~was~~is applied for the previous studies, more realistic inflow is considered in this study. Two cases, one with vertically sheared inflow (LC3_FSC3) and one with turbulent vertically sheared inflow (LC4_FSC3) are compared to the uniform inflow case (LC2_FSC3). For the turbulent inflow case a longer time series is evaluated in order to obtain more representative results.

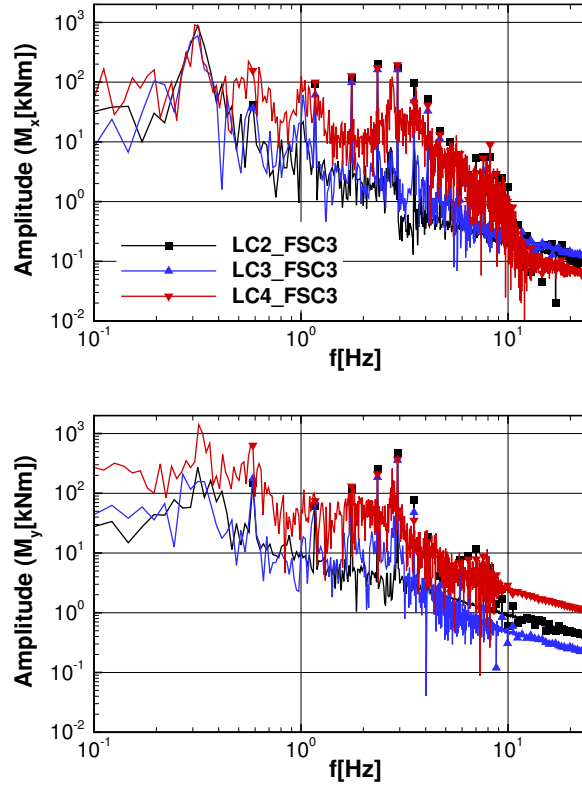


Figure 13. Spectra of tower base bending moments for the cases LC2_FSC3, LC3_FSC3 and LC4_FSC3.

3.3.1 Tower base loads

The spectra of tower base loads in Figure 13 show that for case LC3_FSC3 an increase of amplitudes is only present for M_y at BPF. Amplitudes at higher harmonics of BPF tend to reduce for M_x and M_y . The result also shows that the broadband load level at frequencies between first and fifth BPF harmonics rises. For M_x there is a clear peak just above 1 Hz which even exceeds the peak at BPF. The reduction of amplitudes at higher harmonics of BPF can be explained as a result of the reduced inflow velocity below hub height due to the power law profile. Because of the lower aerodynamic thrust in this region, OOP deflection in front of the tower reduces to approximately 5.5 m compared to 6.46 m in case LC2_FSC3. The rise of amplitudes at BPF can be explained as an effect of vertical shear. While blade-passing is a short pulse and many higher harmonics of BPF are excited, the effect of vertical shear stretches over the whole revolution and is much closer to a sine function. Thus, the excitation of higher harmonics of BPF is much weaker compared to blade-passing. The combination of vertical shear and reduced blade-passing effect finally leads to an increase of amplitudes at BPF while amplitudes at higher harmonics decrease. By superimposing turbulence to the vertically sheared flow in case LC4_FSC3, the character of the spectra changes as the amplitudes at BPF harmonics become much less prominent. There are some clear peaks remaining, but the broadband load

level massively increases. The global maximum now arises for M_y at approximately 0.32 Hz corresponding to an eigenmode of the structural model. Additionally the amplitude at BPF is strongly increased for M_x and M_y ; however, side peaks occur that are partially even higher. The amplitude at approximately 1 Hz further increases compared to case LC3_FSC3 and another wide peak appears at frequencies around approximately 2.75 Hz, which again corresponds to nearby structural eigenmodes.

- 5 The higher amplitudes at frequencies near to structural eigenmodes can be explained by the broadband excitation due to the influence of turbulent inflow on the aerodynamic loads. Without turbulent inflow the main excitation occurs at BPF harmonics because all unsteady effects except for the vortex shedding are periodic with BPF (blade-tower interaction, tilt angle, vertical shear).

3.3.2 Aeroacoustic emissions

- 10 Figure 14 shows the spectra of the acoustic immission at observers C and D for the regarded cases. The vertically sheared inflow (case LC3_FSC3) leads to a slight decrease of SPL at BPF harmonics with a stronger effect at higher frequencies. Only a small increase of amplitude can be observed at BPF for observer D. For observer C an increase in the broadband noise level between approximately 2 Hz and 10 Hz can be found, but it does not exceed 30 dB. The reduction of SPL can be explained with the reduced blade tip deflection in front of the tower already mentioned above, which reduces the pressure fluctuations on
- 15 the tower. Taking the turbulent inflow into account (case LC4_FSC3) leads to an increase of the broadband noise level due to turbulent inflow noise, generated by the interaction of the rotor blade with the turbulence. The inflow noise is emitted from the rotor and predominantly directed in upstream and downstream direction, leading to higher broadband noise levels at observer C compared to observer D. Since the rotor blades encounter the turbulence at considerably higher relative velocity than the tower, the emission from the tower hardly increases compared to case LC3_FSC3. However, despite the increased broadband
- 20 noise level, the peaks at BPF harmonics are still dominant at ~~all four~~ both observer positions.

4 Discussion

- In the first study the influence of the presence of the tower and of steady blade deformation on low-frequency emissions ~~was~~ is evaluated at uniform inflow conditions in standalone CFD simulations. Concerning the aerodynamic loads, the presence of the tower leads to an increase of amplitudes at BPF and its higher harmonics. Applying a steady deformation to the rotor
- 25 blades further increases the amplitudes especially for higher harmonics due to the stronger blade-tower interaction. Splitting the loads up into rotor and tower loads shows that the major part of the fluctuations originates from the tower and is caused by blade-tower interaction. Load oscillations induced by vortex shedding can be observed but do not play an important role. Evaluating the aeroacoustic immission on the ground at a distance of 1000 m shows similar results. Through the presence of the tower a tonal noise emission with prominent peaks at BPF harmonics arises. Reduced blade-tower distance further increases
- 30 the amplitudes of BPF harmonics especially at higher frequencies. Comparing the contributions of tower and rotor to the noise emission shows a strong directivity for the rotor emission in the direction of the rotor axis and a weak directivity for the tower emission except at BPF. Generally the emission from the tower is stronger in all directions in the regarded frequency range.

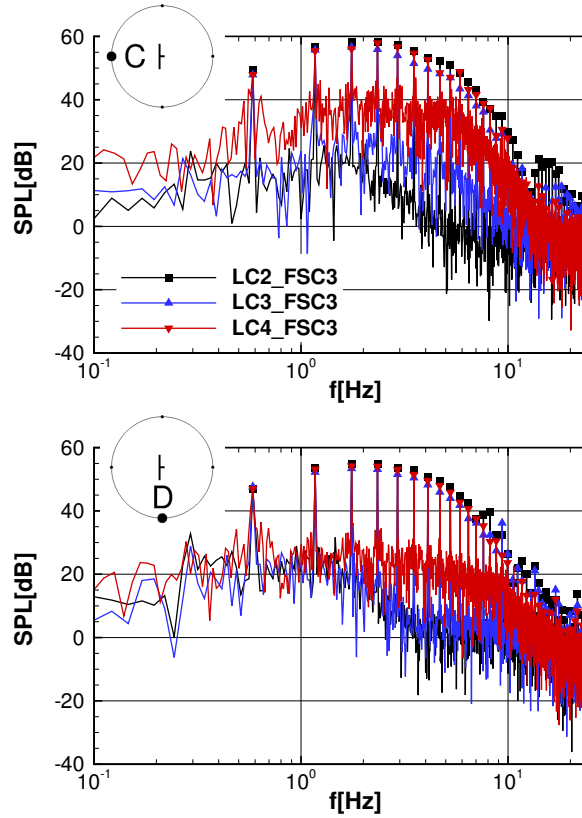


Figure 14. Spectra of unweighted SPL (reference sound pressure of $20\mu\text{Pa}$) at two observer positions on the ground with a distance of 1000 m to the turbine for cases LC2_FSC3, LC3_FSC3 and LC4_FSC3.

This corresponds to the findings by Yauwenas et al. (2017) who did research on blade-passage noise and claimed a significant contribution of the tower. While Yauwenas et al. investigated a small model turbine with a symmetric blade in stationary air and a BPF of 45 Hz, the present study shows that their assumption is also valid for a realistic multi megawatt turbine under uniform inflow and a BPF in the low frequency range.

- 5 In a second study, the influence of degrees of freedom in the structural model ~~was~~is investigated using three cases, one with steady blade deformation already regarded in the first study, another with flexible blades and a third with additionally flexible tower and foundation. Flexible blades have only a minor impact on the calculated tower base loads. Structural eigenmodes play a more significant role in the third case when tower and foundation are flexible too. The peaks at BPF harmonics are still prominent but the amplitudes change and the maxima are shifted towards BPF harmonics close to structural eigenfrequencies.
- 10 Additionally, peaks corresponding to the first bending modes of the tower (0.32 Hz) occur, being dominant in the spectrum of M_x . Concerning aeroacoustics, the emission slightly increases but no clear influence of structural eigenmodes can be found in the regarded frequency range.

The third study deals with the influence of the inflow condition on the emissions. Uniform inflow is compared to vertically sheared inflow with and without turbulence. For vertical shear inflow tower base loads tend to increase at BPF and decrease at higher harmonics of BPF. With superimposed turbulence the peaks become much less prominent since the broadband load level rises. Amplitudes at frequencies close to structural eigenmodes rise and BPF harmonics become less dominant in the spectra.

- 5 The tonal noise level of the aeroacoustic emission tends to reduce slightly with the vertical shear and increase again due to the superimposed turbulence. The broadband noise level strongly increases especially for observers upstream and downstream of the turbine, which is mainly caused by turbulent inflow noise emitted by the rotor. Thus, the BPF harmonics become less prominent but are still dominant in the spectra.

As a generic wind turbine ~~was~~is investigated, no measurements for validation are available. Nevertheless, a qualitative comparison between the presented results and two studies found in literature is drawn. Zieger and Ritter (2018) showed seismic measurements in Germany that suggest an independence of discrete frequency peaks and blade-passing frequency. Although the amplitudes increase with increasing wind speed and rotational speed respectively, the frequencies of the peaks do not change. This can be interpreted as a dominance of structural eigenmodes of the turbine in the origin of the seismic waves. However, at high (rated) rotational speed the dominant frequencies correspond very well to harmonics of the blade-passing frequency. Saccorotti et al. (2011) analyzed seismic measurements of a gravitational wave observatory in Italy close to a wind farm and found steady spectral lines as well as time-varying peaks which could all be identified as emitted by a wind turbine. The results of both studies coincide with the findings of the presented paper where tower base loads at BPF harmonics close to eigenfrequencies of the turbine are prominent in the spectra. The tonal character of the low-frequency noise was also shown in acoustic field measurements (Hansen et al., 2017; Pilger and Ceranna, 2017). They showed that the BPF harmonics are dominant in the measured spectra and thus the peak frequencies shift depending on the rotational speed of the turbine. Pilger and Ceranna furthermore compared measurements of a single 200 kW turbine to estimated SPL from the Viterna method (Viterna, 1981). They found an underestimation of SPL which they explained with environmental conditions neglected in the model. Taking the present study into account it is more likely that the neglect of tower emission in the Viterna method has a major impact on the results.

- 25 Despite the advanced modelling approach applied in the presented study, there are still several limitations that have to be mentioned. In the applied FW-H calculations effects of unsteady flow field, refraction and reflection of acoustic waves and atmospheric layering are not taken into account for the propagation. On the other hand, this makes the method very suitable for the investigation of the aeroacoustic emission of the turbine, as the immission at the observer positions is not influenced by the effects mentioned above. Due to the computationally expensive CFD approach, there are limitations concerning the length of the time series and temporal resolution and consequently the statistical convergence of the results and the resolved frequency range. Although the flexibility of rotor blades , tower and foundation ~~was~~is considered in the simulations further ~~degrees~~degrees of freedom ~~were~~are neglected. The drive train ~~was~~is kept totally rigid and at fixed rotational speed. As *SIMPACK* is a multibody solver and only deformations of points along a beam are transferred, eigenmodes of the shell cannot be considered in the presented approach. However, the mentioned shortcomings do not not change general findings of this paper.

5 Conclusions

In the present paper the low-frequency emissions from a generic 5MW turbine ~~were~~are investigated using a high fidelity time resolved fluid-structure coupled CFD approach. Three different studies ~~were~~are conducted to identify sources, to better understand mechanisms and to evaluate the influence of the model complexity on the resulting emissions. Tower base loads are compared to study the effect of structure-borne noise as seismic wave propagation cannot be calculated with the presented method. The aeroacoustic noise propagation is computed using a Ffowcs-Williams Hawkins method. To consider aeroelasticity in the simulations a new coupling of the CFD solver *FLOWer* to the MBS solver *SIMPack* ~~was developed and~~ is presented in this paper. With this method not only blade deformation can be taken into account, but deformations, translations and rotations of all parts of the turbine. Thus, fluid-structure coupled simulations with flexible tower and foundation could be conducted.

A major advantage compared to lower fidelity approaches is that, as all geometries of the turbine are fully resolved, the unsteady pressure distributions on all surfaces, and thus all aerodynamic loads, are a direct outcome of the simulations. Regarding the aeroacoustic emission it ~~was~~is found that the blade-tower interaction plays a key role and the noise emitted from the tower is higher compared to the noise emitted from the rotor. Only an indirect impact of fluid-structure-coupling on the aeroacoustics could be observed. Elastic blades reduce the distance between blade and tower and thus increase the strength of the blade-tower interaction. Turbulent inflow on the other side mainly influences the broadband noise level of the rotor. For the regarded turbulence level of 16% the noise has a tonal character with dominant peaks at blade-passing frequency harmonics.

Blade-tower interaction also has a great influence on the tower base loads; however, with increasing degrees of freedom structural eigenmodes play a much stronger role than for the aeroacoustic emission and amplitudes at eigenfrequencies become more dominant when turbulent inflow is applied. Nevertheless, blade-passing frequency harmonics can still be identified in the spectra. For aerodynamic load fluctuations at uniform inflow it ~~was~~is found that the contribution of the tower exceeds the contribution of the rotor.

Several conclusions for the modelling of low-frequency emissions using CFD simulations can be drawn from the conducted studies. The blade-tower interaction ~~was~~is found to be the main source of aeroacoustic noise and triggers a major part of the aerodynamic load fluctuations. The tower itself as well as a realistic blade-tower distance has to be considered in the simulation to capture the blade-tower interaction properly. Fluid-structure coupling is the most appropriate way to a realistic blade-tower distance and is mandatory if structural emission shall be regarded. Moreover the acoustic emission from the tower has to be considered in the noise evaluation and the loads on the tower have to be included in the fluid-structure coupling. Concerning the structural emission, not only the flexibility of the rotor blades but also of tower and foundation have to be taken into account as they change the character of the tower base load spectra. Turbulent inflow should also be taken into account, because it enhances the excitation of structural eigenmodes.

The findings can be transferred to any modelling method of low-frequency emissions from wind turbines. The method has to be capable of capturing the impact of blade-passing not only on the blades but also on the tower and its effect on the one hand on the aerodynamic load fluctuations and on the other hand on the aeroacoustic noise emission.

Future work will deal with several of the listed limitations. A slightly smaller commercial wind turbine will be investigated numerically with the presented approach and field measurements will be available for comparison. Subsequently, the turbine will be simulated taking into account the operational conditions of the measurements. The influence of full shell coupling on the low-frequency emission will be investigated in a future study. Based on the presented findings, constructional measures as lattice towers, increased blade tower distance or swept blades are likely to reduce low-frequency emissions and should be taken into account for future research.

Data availability. Data of the NREL 5 MW turbine is available from Jonkman et al. (2009).

Competing interests. The authors declare that they have no conflict of interest.

- 10 *Acknowledgements.* The studies were conducted as part of the joint research project "Objective Criteria for Seismic and Acoustic Emission of Inland Wind Turbines (TremAc), FKZ 0325839A", funded by the German Federal Ministry for Economic Affairs and Energy (BMWi). The authors are grateful for the financial support. The authors gratefully acknowledge the *High Performance Computing Center Stuttgart* for providing computational resources within the project *WEALoads*.

References

- Arnold, M., Cheng, P. W., Biskup, F., et al.: Simulation of Fluid-Structure-Interaction on Tidal Current Turbines Based on Coupled Multibody and CFD Methods, in: The Twenty-third International Offshore and Polar Engineering Conference, International Society of Offshore and Polar Engineers, 2013.
- 5 Bekiropoulos, D., Lutz, T., Baltazar, J., Lehmkuhl, O., and Glodic, N.: D2013-3.1: Comparison of benchmark results from CFD-Simulation, Deliverable report, KIC-OFFWINDTECH, 2013.
- Bozorgi, A., Ghorbaniasl, G., and Nourbakhsh, S.: The reduction in low-frequency noise of horizontal-axis wind turbines by adjusting blade cone angle, *International Journal of Environmental Science and Technology*, pp. 1–14, <https://doi.org/10.1007/s13762-017-1639-x>, 2018.
- Ghasemian, M. and Nejat, A.: Aerodynamic noise prediction of a horizontal Axis wind turbine using improved delayed detached eddy simulation and acoustic analogy, *Energy Conversion and Management*, 99, 210–220, <https://doi.org/10.1016/j.enconman.2015.04.011>, 2015.
- 10 Gortsas, T. V., Triantafyllidis, T., Chrisopoulos, S., and Polyzos, D.: Numerical modelling of micro-seismic and infrasound noise radiated by a wind turbine, *Soil Dynamics and Earthquake Engineering*, 99, 108–123, <https://doi.org/10.1016/j.soildyn.2017.05.001>, 2017.
- Hansen, K. L., Zajamšek, B., and Hansen, C. H.: The Occurrence of Nocturnal Wind Farm Rumbling Noise, 7th International Conference on Wind Turbine Noise Rotterdam, pp. 1–11, 2017.
- 15 Illg, J., Lutz, T., and Krämer, E.: Aeroacoustic Simulation of an Airfoil in Turbulent Inflow, in: 6th International Conference on Wind Turbine Noise, Glasgow, 2015.
- Jassmann, U., Berroth, J., Matzke, D., Schelenz, R., Reiter, M., Jacobs, G., and Abel, D.: Model predictive control of a wind turbine modelled in Simpack, in: *Journal of Physics: Conference Series*, vol. 524, IOP Publishing, <https://doi.org/10.1088/1742-6596/524/1/012047>, 2014.
- 20 Jonkman, J., Butterfield, S., Musial, W., and Scott, G.: Definition of a 5-MW reference wind turbine for offshore system development, Tech. rep., National Renewable Energy Lab.(NREL), Golden, CO (United States), <https://doi.org/10.2172/947422>, 2009.
- Knopper, L. D., Ollson, C. A., McCallum, L. C., Whitfield Aslund, M. L., Berger, R. G., Souweine, K., and McDaniel, M.: Wind Turbines and Human Health, *Frontiers in Public Health*, 2, 63, <https://doi.org/10.3389/fpubh.2014.00063>, 2014.
- Kowarsch, U., Keßler, M., and Krämer, E.: High order CFD-simulation of the rotor-fuselage interaction, in: 39th European Rotorcraft Forum, Moscow, 2013.
- 25 Kranzinger, P. P., Kowarsch, U., Schuff, M., Keßler, M., and Krämer, E.: Advances in parallelization and high-fidelity simulation of helicopter phenomena, in: *High Performance Computing in Science and Engineering' 15*, pp. 479–494, Springer International Publishing, https://doi.org/10.1007/978-3-319-24633-8_31, 2016.
- Kroll, N., Rossow, C.-C., Becker, K., and Thiele, F.: The MEGAFLOW project, *Aerospace Science and Technology*, 4, 223–237, [https://doi.org/10.1016/S1270-9638\(00\)00131-0](https://doi.org/10.1016/S1270-9638(00)00131-0), 2000.
- 30 Li, Y., Castro, A., Martin, J., Sinokrot, T., Prescott, W., and Carrica, P.: Coupled computational fluid dynamics/multibody dynamics method for wind turbine aero-servo-elastic simulation including drivetrain dynamics, *Renewable Energy*, 101, 1037–1051, <https://doi.org/10.1016/j.renene.2016.09.070>, 2017.
- Liu, W.: A review on wind turbine noise mechanism and de-noising techniques, *Renewable Energy*, 108, 311–320, <https://doi.org/10.1016/j.renene.2017.02.034>, 2017.
- 35 Luhmann, B., Seyedin, H., and Cheng, P.-W.: Aero-structural dynamics of a flexible hub connection for load reduction on two-bladed wind turbines, *Wind Energy*, 20, 521–535, <https://doi.org/10.1002/we.2020>, 2017.

- Lutz, T., Arnold, B., Bekiropoulos, D., Illg, J., Krämer, E., Wolf, A., Hann, R., and Kamruzzaman, M.: Prediction of Flow-Induced Noise Sources of Wind Turbines and Application Examples, *International Journal of Aeroacoustics*, 14, 675–714, <https://doi.org/10.1260/1475-472X.14.5-6.675>, 2015.
- Madsen, H. A.: Low frequency noise from wind turbines mechanisms of generation and its modelling, *Journal of Low Frequency Noise, Vibration and Active Control*, 29, 239–251, <https://doi.org/10.1260/0263-0923.29.4.239>, 2010.
- Mann, J.: The spatial structure of neutral atmospheric surface-layer turbulence, *Journal of fluid mechanics*, 273, 141–168, <https://doi.org/10.1017/S0022112094001886>, 1994.
- Matha, D., Hauptmann, S., Hecquet, T., and Kühn, M.: Methodology and results of loads analysis of wind turbines with advanced aeroelastic multi-body simulation, DEWEK, Bremen, 2010.
- 10 Menter, F. R.: Two-equation eddy-viscosity turbulence models for engineering applications, *AIAA journal*, 32, 1598–1605, <https://doi.org/10.2514/3.12149>, 1994.
- Pilger, C. and Ceranna, L.: The influence of periodic wind turbine noise on infrasound array measurements, *Journal of Sound and Vibration*, 388, 188–200, <https://doi.org/10.1016/j.jsv.2016.10.027>, 2017.
- Saccorotti, G., Piccinini, D., Cauchie, L., and Fiori, I.: Seismic noise by wind farms: a case study from the Virgo Gravitational Wave Observatory, Italy, *Bulletin of the Seismological Society of America*, 101, 568–578, <https://doi.org/10.1785/0120100203>, 2011.
- 15 Sayed, M., Lutz, T., and Krämer, E.: Aerodynamic investigation of flow over a multi-megawatt slender bladed horizontal-axis wind turbine, in: *Renewable Energies Offshore*, pp. 773–780, CRC Press, 2015.
- Sayed, M., Lutz, T., Krämer, E., Shayegan, S., Ghantasala, A., Wüchner, R., and Bletzinger, K.-U.: High fidelity CFD-CSD aeroelastic analysis of slender bladed horizontal-axis wind turbine, *Journal of Physics: Conference Series*, 753, 042 009, <https://doi.org/10.1088/1742-6596/753/4/042009>, 2016.
- 20 Schepers, J., Ceyhan, O., Boorsma, K., Gonzalez, A., Munduate, X., Pires, O., Sørensen, N., Ferreira, C., Sieros, G., Madsen, J., Voutsinas, S., Lutz, T., Barakos, G., Colonia, S., Heißelmann, H., Meng, F., and Croce, A.: Latest results from the EU project AVATAR: Aerodynamic modelling of 10 MW wind turbines, *Journal of Physics: Conference Series*, 753, 022 017, <https://doi.org/10.1088/1742-6596/753/2/022017>, 2016.
- 25 Schuff, M., Kranzinger, P., Keßler, M., and Krämer, E.: Advanced CFD-CSD coupling: Generalized, high performant, radial basis function based volume mesh deformation algorithm for structured, unstructured and overlapping meshes, in: *Proceedings of the 40th European Rotorcraft Forum*. Southampton. Great Britain, 2014.
- Schulz, C., Klein, L., Weihing, P., and Lutz, T.: Investigations into the Interaction of a Wind Turbine with Atmospheric Turbulence in Complex Terrain, *Journal of Physics: Conference Series*, 753, 032 016, <https://doi.org/10.1088/1742-6596/753/3/032016>, 2016a.
- 30 Schulz, C., Meister, K., Lutz, T., and Krämer, E.: Investigations on the wake development of the MEXICO rotor considering different inflow conditions, in: *New Results in Numerical and Experimental Fluid Mechanics X*, pp. 871–882, Springer, https://doi.org/10.1007/978-3-319-27279-5_76, 2016b.
- Stammler, K. and Ceranna, L.: Influence of wind turbines on seismic records of the Gräfenberg array, *Seismological Research Letters*, 87, 1075–1081, <https://doi.org/10.1785/0220160049>, 2016.
- 35 Streiner, S., Hauptmann, S., Kühn, M., and Krämer, E.: Coupled fluid-structure simulations of a wind turbine rotor, in: *Deutsche Windenergie-Konferenz (DEWEK)*. Bremen, Germany: DEWI-German Wind Energy Institute, 2008.

- Styles, P., Stimpson, I., Toon, S., England, R., and Wright, M.: Microseismic and infrasound monitoring of low frequency noise and vibrations from windfarms, Recommendations on the Siting of Windfarms in the Vicinity of Eskdalemuir, Scotland, Report to MOD/FTI/BWEA, 125pp, 2005.
- Turnbull, C., Turner, J., and Walsh, D.: Measurement and level of infrasound from wind farms and other sources, *Acoustics Australia*, 40, 45–50, 2012.
- Van den Berg, G.: The beat is getting stronger: the effect of atmospheric stability on low frequency modulated sound of wind turbines, *Journal of Low Frequency Noise, Vibration and Active Control*, 24, 1–23, <https://doi.org/10.1260/0263092054037702>, 2005.
- Viterna, L. A.: The NASA-LERC wind turbine noise prediction code, NASA CP, 2185, <https://ntrs.nasa.gov/search.jsp?R=19820015854>, 1981.
- 10 Weihing, P., Letzgus, J., Bangga, G., Lutz, T., and Krämer, E.: Hybrid RANS/LES capabilities of the flow solver FLOWer-application to flow around wind turbines, in: *The 6th Symposium on Hybrid RANS-LES Methods*, Strassbourg, 2016.
- Yauwenas, Y., Zajamšek, B., Reizes, J., Timchenko, V., and Doolan, C. J.: Numerical simulation of blade-passage noise, *The Journal of the Acoustical Society of America*, 142, 1575–1586, <https://doi.org/10.1121/1.5003651>, 2017.
- Zajamšek, B., Hansen, K. L., Doolan, C. J., and Hansen, C. H.: Characterisation of wind farm infrasound and low-frequency noise, *Journal of Sound and Vibration*, 370, 176–190, <https://doi.org/10.1016/j.jsv.2016.02.001>, 2016.
- 15 Zieger, T. and Ritter, J. R.: Influence of wind turbines on seismic stations in the upper rhine graben, SW Germany, *Journal of Seismology*, 22, 105–122, <https://doi.org/10.1007/s10950-017-9694-9>, 2018.