

Interactive comment on “Automatic Measurement and Characterization of the Dynamic Properties of Tethered Membrane Wings” by Jan Hummel et al.

J. Deparday (Referee)

julien.deparday@epfl.ch

Received and published: 7 September 2018

1 general comments

The article presents an original and well-designed experimental setup to assess the flight dynamic properties of kites used for airborne wind energy system. This full-scale experimental setup shows great promises for reliable and repeatable experiments of general performance and dynamic maneuvers.

I found this paper well written with clear figures to explain this complex test bench and the first results. I was sometimes a bit confused with the structure of the article but the main story can easily be followed.

[Printer-friendly version](#)

[Discussion paper](#)



2 specific comments

To improve the overall good quality of this paper, I would have a few remarks:

2.1 terms in introduction part

In the introduction, there are many specific terms specific to kite/flexible membrane of airborne wind energy system (ex: Leading-Edge Inflatable tube kites, ram air wing, chambered design, ribs, ...) As the readers of this journal might not be completely aware of all these terms, either explaining a bit more the most important terms or an extra figure describing the general type of kite used with this test bench might help to visualize the topic. A photograph or a figure inspired from Figure 2 could be an idea.

2.2 control of the control bar

I don't really understand how the control bar is controlled and slides along the power line.

2.3 load cell precision

The load cells are presented in section 3.2 with the dimensionless precision. Their absolute error in Newton are explained a few pages after. It would be more convenient to briefly insert these absolute errors in section 3.2.

2.4 wind speed error

I don't really understand the paragraph page 12 from line 16 to 23. What is your point in this explanation? Why is it safe to overestimate the roughness?

2.5 elevation angle

As you know the measuring error of the angle sensors, and you have the formulas to determine the azimuth angle, did you use a GUM (Guide to the expression of uncertainty in measurement) analysis?

2.6 data processing system

It is written: "A network interface is used to communicate with the host computer as well as retrieving measured values of the spherical camera array". What are the measured values of the spherical camera array? The images?

2.7 synchronization of the measurements

Do you record data "on the flow" i.e. sensors send raw data as fast as they can, or does the sbRIO control them using a "master-slave" communication? What are the sampling frequencies of the sensors? As this test bench will be used for dynamic measurements, the dynamics of the sensors and of the recording might be relevant to add in the article.

2.8 results presentation

It is written: "Only maneuvers lasting a given minimal timespan were taken into account. During some maneuvers an unintentional change of position or orientation (e.g. caused by gusts) led to the pilot aborting the maneuver. The valid results are plotted..." What is the minimal timespan?

To clearly understand: the maneuvers affected by gusts are not part of the valid results?

2.9 presentation of the tested kites

It is written: "a figure is shown which summarizes all measurement data into a single curve... Additionally, these figures show the resulting error for a confidence interval of 95%".

Does this single curve is the average of all the tests for each kite?

Is the confidence interval of 95% coming from the deviation between the different tests, or from the uncertainty measured in section 3.3.3?

2.10 discussion on the elevation angle offset

It is written: "The only significant deviation was found after a long period between two test runs".

Are these 2 test runs described here are the same than the 2 different days (day 1 and day 2) presented in the figures?

I don't really understand what a "reference wing" could be.

More as a suggestion: would it be possible to rotate "manually" the 3 rotations axes (universal joint and rotary axle)? By recording independently the angles purposely set,

a calibration of the 3 angle sensors might be able to calibrate and check any potential offset?

2.11 Results of lift coefficient

It is written: "The airflow velocity is assumed to equal the measured wind speed of the weather station." For these results, do you neglect the wind power law equation (equation 13)?

2.12 force ratio

Are the angles of the steering lines relative to the power line taken into account? Or as the kite is high enough, are they considered parallel to the power line?

2.13 Conclusions

It is written: "So far the reproducible measurement of flight dynamic properties of tethered flexible wings was not feasible".

Was it not feasible? Or not done yet? It sounds in contradiction with the abstract: "We can conclude from this study that an objective measurement of specific dynamic properties of highly flexible membrane wings is feasible".

3 technical corrections

I did not detect any typing errors or wrong sentences. There is only one small typing error in figure 10: "Wheater station"

Printer-friendly version

Discussion paper



Interactive comment on “Automatic Measurement and Characterization of the Dynamic Properties of Tethered Membrane Wings” by Jan Hummel et al.

Jan Hummel et al.

jan.hummel@tu-berlin.de

Received and published: 17 September 2018

Thank you for your detailed review. I will answer your questions in the same order:

2.1 terms in introduction part

I will explain the kite-specific terms within the paper, briefly.

i.e. “ribs (connecting topskin and bottomskin)”

“chambered design (chambers are separated by ribs, topskin and bottomskin)”

Additionally, we can add a figure, as shown below (Fig.1)

Printer-friendly version

Discussion paper



Caption: “left: Leading Edge Inflatable (LEI) tube kites (single-skin kite); right: ram air wing”

Alternatively, the terms are also explained in more detail in the following publications:

Ram air wing:

Dunker, Storm (2014): Ram-air Wing Design Considerations for Airborne Wind Energy. In: Uwe Ahrens, Moritz Diehl und Roland Schmehl (Hg.): Airborne wind energy: Springer-Verlag (Green energy and technology), S. 517–546. http://dx.doi.org/10.1007/978-3-642-39965-7_31.

p.518 Fig. 31.1

LEI kite

Bosch, Allert; Schmehl, Roland; Tiso, Paolo; Rixen, Daniel (2014): Nonlinear Aeroelasticity, Flight Dynamics and Control of a Flexible Membrane Traction Kite. In: Uwe Ahrens, Moritz Diehl und Roland Schmehl (Hg.): Airborne wind energy: Springer-Verlag (Green energy and technology), S. 307–323. http://dx.doi.org/10.1007/978-3-642-39965-7_17.

p.312 Fig. 17.3

What do you think is the most suitable solution?

2.2 control of the control bar

The steering lines of the test bench are connected to the ends of the control bar, passed through the rotary axle and redirected by pulleys. At the other side, they are connected to rope pulleys that are operated by motors (p.8 lines 14-15, Fig. 6).

The sliding of the control bar along the power line is shown in Fig. 3. In the center of a common kitesurfing control bar, there is a hole through which the powerline is guided.

2.3 load cell precision

We can insert the absolute error in section 3.2. and delete chapter 3.3.1

2.4 wind speed error

Actually, we are measuring the wind speed on top of the towing vehicle, while driving. However, for calculating the kite properties, the resulting wind speed at kite level is needed. The resulting error caused by differences in height can be estimated by the wind power law (eq. 13).

An overestimated coefficient of friction will result in an overestimated static wind speed on kite level, which in turn will result in an overestimation of the resulting error $\delta v_{w,real}$

Here is an example:

We have to adjust the traveling speed of the towing vehicle depending on the measured wind speed on the towing vehicle which in turn has to be the target testing speed (i.e. $v_w(z_{REF}) = 11m/s$). As can be seen in eq. 14, the relative portion of the traveling speed depends on the natural wind speed at the height of $z_{REF} = 3m$. The traveling speed of the towing vehicle is minimized if the vector of the static wind speed is directed against the towing direction. Assuming a maximum line length of 24 meters ($z = 24m$) as well as a maximum natural wind speed of 3m/s at a height of 3 meters ($v_{tw}(z_{REF}) = 3m/s$) with eq. 13. a static wind speed on kite level ($z = 24m$) of $v_{tw,plaw}(z) = 5m/s$ results.

By a target speed $v_w(z_{REF})$ of 11m/s , a traveling speed of $v_p = 8\text{m/s}$ results (eq. 14).

The wind speed on kite level is composed of the traveling speed ($v_p(z_{REF})$) as well as the wind speed calculated with the wind power law (eq. 15). Since the traveling speed of the wind window is constant ($v_p(z_{REF} = 3\text{m}) = v_p(z_{REF} = 24\text{m})$), the true wind speed on kite level is calculated to $v_{w,real}(z = 24\text{m}) = 13\text{m/s}$ if $v_w(z_{REF}) = 11\text{m/s}$.

Regarding this worst-case scenario the relative error can be assumed as $\delta v_{w,real} \leq +20\%$.

2.5 elevation angle

The resultant error from the three angle sensors and the accuracy of the weather station was calculated analogously to the elevation angle (Sec.3.3.3) with $\epsilon\varphi_w = 2.14^\circ$. However, this angle is not used for the calculation of the dynamic properties and was therefore not mentioned in this paper.

2.6 data processing system

The camera system works as an independent sensor system and also provides the elevation angle as well as the azimuth angle. In addition, the orientation is measured to improve future control algorithms. For the calculation of the dynamic coefficients it has not yet been used.

2.7 synchronization of the measurements

all presented sensors are operated via the “master-slave” principle. Within the deterministic loop mentioned in Sec. 4.1 a measured value is retrieved once per

[Printer-friendly version](#)[Discussion paper](#)

iteration (50Hz), except for the weather station, which has a frequency of 1Hz. The measuring amplifiers of the load cells could theoretically reach a frequency of 150Hz and the angle sensors of approx. 100Hz.

2.8 results presentation

The minimal timespan in postprocessing was set to 4 seconds.

Your question was: “the maneuvers affected by gusts are not part of the valid results?”

This is not completely right, only maneuvers with a length less than the mentioned 4 seconds were excluded. This means if the pilot was able to control the kite until the end of the maneuver, also maneuvers which were strongly influenced by gusts were taken into account.

2.9 presentation of the tested kites

Yes, this curve represents the average of all maneuvers for each kite (including different test runs on the same day). The confidence interval results from the deviation of the different maneuvers.

2.10 discussion on the elevation angle offset

Since the curves of day 1 and day 2 only differ by an offset for the aerodynamic efficiency, a representation was omitted to improve the clarity. Of course, this offset must be further investigated if it cannot be compensated by the measures mentioned below (p.17 line 32 f.).

For the force ratio, each test run is shown individually as an example. An offset was not observed. Regarding your suggestion of calibration: We carried out this kind of calibration. The offset is very unlikely caused by the angle sensors. As mentioned, the offset is most likely caused by changes in geometry which are difficult to control. This is why we will also test the reference wing/ kite in future.

We test this reference kite each test day. The curves of different days should fit each other. If this is not the case, the setup changes compared to the test days before must be investigated systematically. Furthermore, the offset can be compensated in postprocessing, so that the kites can be still compared against each other. As mentioned before, it can also be determined from other measurements that curves for a kite fit very well against each other at the same day. The assumption that this offset is caused in changes of geometry, e.g. due to the changed tire pressure or loading of the towing vehicle, is therefore very likely.

2.11 Results of lift coefficient

No, we do not neglect the wind power law. Here the error of the wind speed, discussed before is important. If we have perfect wind conditions, which means zero wind speed ($v_{tw}(z_{REF}) = 0m/s$), the wind speed resulting from the wind power law is zero, too, which in turn means the resulting windspeed on kite level is the same as on the ground. If the natural wind is not equal to zero (which is always the case), the relative error is below +20%.

2.12 force ratio

The angles of the steering lines are not taken into account because of the line length.

[Printer-friendly version](#)[Discussion paper](#)

2.13 Conclusions

This is correct, the wording is not favorable. We will change it to:

‘With existing approaches the reproducible measurement of flight dynamic properties of tethered flexible wings was not feasible.’

Interactive comment on Wind Energ. Sci. Discuss., <https://doi.org/10.5194/wes-2018-56>, 2018.



Fig. 1.

[Printer-friendly version](#)

[Discussion paper](#)



Interactive comment on “Automatic Measurement and Characterization of the Dynamic Properties of Tethered Membrane Wings” by Jan Hummel et al.

Anonymous Referee #2

Received and published: 22 September 2018

1. Summary and Recommendation

The manuscript describes an automated test bench setup for measurements of flight properties of tethered wings. The system is build on a car trailer to be used in towing mode and features extended steering and measurement components. After an introduction, the quantities to be measured are introduced. Subsequently, the hardware setup is described in detail. After a brief section on data acquisition and testing procedure, flight test results are presented by comparing aerodynamic properties of five kites in static flight mode.

In general and in large part, the paper is well written, contains clear figures and provides detailed insights in the technical implementation of the setup. As these measurements are essential for the development of kites for airborne wind energy (AWE),

[Printer-friendly version](#)

[Discussion paper](#)



the manuscript is of broad interest for the AWE community. Thus, this clear and consistent presentation of the experimental setup can be clearly regarded as the main contribution of the paper. In contrast, the result section appears weak as only static flight at one wind speed is discussed which by far does not cover the operational range needed in AWE setups. However, rating the overall manuscript, the reviewer definitely recommends publication in WES. The discussion of the data and especially the outlook should undergo a (minor) rework in order to provide a clearer assessment of the experimental results achieved and future experiments needed to provide a full characterization of tethered wings for application in AWE. Please find details below.

2. Scientific questions and issues

- One big advantage of the setup is that the wind speed can be directly adjusted by just setting the cruising speed of the towing vehicle. Why are only results for one wind speed presented. Could you specify and discuss range of wind speeds which could be examined by this setup?
- AWE setups require a dynamic flight mode of the kites. How will dynamic flight test be implemented in the existing setup?
- The Abstract should be shortened. In parts, it resembles an introduction but should provide a condensed summary of the own work presented in the paper.
- The "Conclusion and Outlook" section has a partly confusing structure and should be reworked. In the first two sentences, it is stated, that "dynamic flight...was not feasible...is essential". Two sentences later, the authors claim that "...presented work fills this gap...". Subsequently a lot of issues are addressed but in arbitrary order in one long paragraph. Please state clearly what has been achieved. Then it would be nice to have a summary of future work to be required by AWE applications and a brief discussion of the ideas to extend the setup.
- the line sag is mentioned in the outlook, but shouldn't it be discussed in the error

[Printer-friendly version](#)[Discussion paper](#)

analysis (3.3.3), especially for static depowered flight?

- are the errorbars in Figure 14 realistic as the C_L coefficient depends on wind speed, for which an error of 20% is assumed (3.3.2)?

3. Technical corrections

- consistent symbols should be used, e.g. for vectors (bold face on page 4 <-> overline on page 11)

Interactive comment on Wind Energ. Sci. Discuss., <https://doi.org/10.5194/wes-2018-56>, 2018.

Printer-friendly version

Discussion paper



Interactive comment on “Automatic Measurement and Characterization of the Dynamic Properties of Tethered Membrane Wings” by Jan Hummel et al.

Jan Hummel et al.

jan.hummel@tu-berlin.de

Received and published: 28 September 2018

Thank you for your review. In principle, your comments regarding the experimental data are justified. The scope of this work was to demonstrate the proper functioning of the test bench, specifically the repeatability of the test procedure. Indeed, to fully characterize flexible membrane wings, more sophisticated maneuvers are needed. Due to the time constraints it was not possible to implement further maneuvers within the scope of this work. At the moment, however, the department is working on exactly this functional enhancement and on a fully automation. In the abstract we therefore mention: “On the basis of this work, more complex maneuvers and a full degree of automation can be implemented in subsequent work. It can also be used for aerodynamic parameter identification. ”

[Printer-friendly version](#)

[Discussion paper](#)



And within conclusion and outlook: “in order to increase reproducibility and perform aerodynamic parameter identifications, it is necessary to implement and automate more sophisticated maneuvers”

2 Scientific questions and issues

Referee: *“One big advantage of the setup is that the wind speed can be directly adjusted by just setting the cruising speed of the towing vehicle. Why are only results for one wind speed presented. Could you specify and discuss range of wind speeds which could be examined by this setup?”*

The main reason for presenting data recorded at the same wind speed was to demonstrate the repeatability. Otherwise, from the authors point of view, an assessment of repeatability is not feasible.

The range of wind speed which could be examined is only limited by the cut-in wind speed of the kite (minimum wind speed for flying the kite) as well as the maximum tensile forces resulting from the kite, acting on the test bench (the design force was set to $5000N$, which is described in Sec.3.1). Caused by the weight of the test bench the maximum vertical force is actually limited to $3000N$, which could be increased by increasing the weight of the trailer, if necessary.

Assuming a force coefficient of $C_R = 0.7$ (which is the maximum value in Fig. 14), surface area of $A = 10m^2$, air density of $\rho = 1.184kg/m^3$ and apparent wind velocity of $v_a = 50kt$ ($v_a = 25.7m/s$), the resulting Force is $F_R = 2837N < 3000N$ (see Eq.4). But since the aerodynamic coefficients investigated so far should be wind independent, the authors see no need to test in higher wind speeds to compare the wings against each other.

As can be seen from Eq.4, the tensile force mainly depends on the wing size and the

apparent wind velocity. For the presented maneuver “Linear Power” and the presented wing sizes, a maximum testing speed of 50kt can be given, which can be increased, if necessary.

With crosswind maneuvers an enormous increase in power is expected. If the tensile force exceeds 5000N the design of the test bench has to be adapted or the wing has to be smaller.

Referee: *“AWE setups require a dynamic flight mode of the kites. How will dynamic flight test be implemented in the existing setup?”*

Dynamic flight maneuvers are currently being implemented and have (partially) already been successfully tested, but this exceeds the scope of this paper. Automated maneuvers can be implemented by newly developed control algorithms with the help of the presented sensors as well as additionally developed sensors.

Referee: *“The Abstract should be shortened. In parts, it resembles an introduction but should provide a condensed summary of the own work presented in the paper.”*

We will shorten the abstract and move some content to the introduction part.

Referee: *“The ‘Conclusion and Outlook’ section has a partly confusing structure and should be reworked. In the first two sentences, it is stated, that ‘dynamic flight...was not feasible...is essential’. Two sentences later, the authors claim that ‘...presented work fills this gap...’. Subsequently a lot of issues are addressed but in arbitrary order in one long paragraph. Please state clearly what has been achieved. Then it would be nice to have a summary of future work to be required by AWE applications and a brief discussion of the ideas to extend the setup.”*

We will revise the section “Conclusion and Outlook” for a more clear structure.

Regarding future work, a rough outlook can be given. When writing this paper the recommendation to subsequent research was that more complex and automated maneuvers have to be implemented and the testing method has to be improved (e.g. flying figures of eight to determine the turn rate). At the moment we have made great progress in terms of automation, improvement of the sensor system as well as maneuver enhancement, but this is the subject of current activities and can therefore not be further detailed.

Referee: *“the line sag is mentioned in the outlook, but shouldn’t it be discussed in the error analysis (3.3.3), especially for static depowered flight?”*

I did not consider the line sag to minimize the post-processing. Since we use the same bar every test run, the line sag is similar for every kite, which means the repeatability can be clearly demonstrated with this method and the kites can be compared against each other (see p.6 “In order to facilitate an easy assessment of the measurement results as well as the reliability of the method, post-processing calculations to optimize the estimation of the properties were not carried out”).

One of the central tasks of the subsequent work is the systematic investigation and improvement of the measuring method e.g. by performing post-processing calculations, which includes the line sag. We will incorporate this in the revised outlook.

Referee: *“are the errorbars in Figure 14 realistic as the C_L coefficient depends on wind speed, for which an error of 20% is assumed (3.3.2)?”*

the error of wind speed is mentioned as $\delta v_{w,real} \leq +20\%$ for a worst case scenario (wind vector $v_{tw}(z_{REF})$ pointing exactly towards the opposite direction of travel, a static wind velocity of $3m/s$ as well as an overestimated coefficient of friction α), whereas at the presented day the wind conditions were much better.

[Printer-friendly version](#)[Discussion paper](#)

3. Technical corrections

Thanks for the advice, we'll rework it.

Interactive comment on Wind Energ. Sci. Discuss., <https://doi.org/10.5194/wes-2018-56>, 2018.

WESD

[Interactive
comment](#)

[Printer-friendly version](#)

[Discussion paper](#)



Automatic Measurement and Characterization of the Dynamic Properties of Tethered Membrane Wings

Jan Hummel¹, Dietmar Göhlich¹, and Roland Schmehl²

¹Methods for Product Development and Mechatronics, Technische Universität Berlin, 10623 Berlin, Germany

²Faculty of Aerospace Engineering, Delft University of Technology, 2629 HS Delft, Netherlands

Correspondence: Jan Hummel (jan.hummel@tu-berlin.de)

Abstract. ~~The performance of an airborne wind energy system crucially depends on the aerodynamic, structural dynamic and flight dynamic properties of the tethered wing. In the scope of this paper, flight dynamic properties are determined against reproducible steering inputs. Current design methods for highly flexible membrane wings have achieved a mature product level by combining iterative testing with empirical and intuitive variation of wing parameters. However, for significant further~~

~~improvements, experimental data of high quality is indispensable.~~ We have developed a tow test setup for reproducible measurement of the dynamic properties of different types of tethered membrane wings. The test procedure is based on repeatable automated maneuvers with the entire kite system under realistic conditions. By measuring line forces and line angles, we determine the aerodynamic coefficients and the lift-to-drag ratio as functions of the length ratio between power and steering lines. This non-dimensional parameter characterizes the angle-of-attack of the wing and is varied automatically by the control unit on the towed test bench. During each towing run, several test cycles are executed such that mean values can be determined and errors can be minimized. We can conclude from this study that an objective measurement of specific dynamic properties of highly flexible membrane wings is feasible. The presented tow test method is suitable for quantitatively assessing and comparing different wing designs. The method represents an essential milestone for the development and characterization of tethered membrane wings as well as for the validation and improvement of simulation models. On the basis of this work, more complex maneuvers and a full degree of automation can be implemented in subsequent work. It can also be used for aerodynamic parameter identification.

1 Introduction

With the turn of the millennium, kitesurfing has evolved into a mainstream water sport, followed by the more recent variants of land and snow kiting ([Tauber and Moroder, 2013](#)). In terms of industrial applications, flexible membrane wings have already been used since the 1970s as aerodynamic decelerators for airdrop systems and are currently being explored for airborne wind energy (AWE) generation (Schmehl, 2018). Despite the advancements within the kitesurfing and AWE industries, tethered membrane wings are mostly still designed by iterative testing with empirical and intuitive variation of wing parameters. Although this has led to a relatively high degree of maturity on product level, the approach is time consuming and expensive because a large number of prototypes need to be manufactured and tested. For this reason, we conclude that the empirical



Figure 1. [left: Leading Edge Inflatable \(LEI\) tube kites \(single-skin kite\); right: ram air wing](#)

design method will allow only limited further improvements and that it is indispensable to develop a systematic understanding of how wing performance parameters such as aerodynamic coefficients, lift-to-drag ratio, steering forces and moments depend on the wing design.

The empirical design method is used because compared to rigid wings the physics of flexible membrane wings is complex and the existing knowledge is limited, due to deforming under aerodynamic load and steering line actuation. This holds particularly for Leading Edge Inflatable (LEI) tube kites ([see Fig. 1](#)) and other single-skin kite types, since ram air wings have already been investigated systematically for several decades (Dunker, 2013; Johari et al., 2014; Dunker, 2018). Because of the high degree of flexibility and the low weight of the membrane structure, the flow around the wing and its shape are strongly coupled. A change in the flow field alters the aerodynamic load distribution to which the structure rapidly adjusts by deformation, which in turn changes the flow field. The fluid-structure coupling cause deformation phenomena at different length and time scales (Leuthold, 2015). A typical large-scale phenomenon is the spanwise bending and twisting of the entire wing due to steering line actuation. The ability of the membrane wing to deform asymmetrically and by that generate a substantially increased turning moment makes it particularly suitable for AWE applications which require excellent maneuverability (Breukels et al., 2013; Bosch et al., 2014; van Reijen, 2018; Fechner and Schmehl, 2018). Typical small-scale phenomena are the local flutter of the wing canopy or wrinkling, which is caused by local compression loads that can not be supported by the woven fabric material.

Another characteristic that distinguishes flexible membrane wings from rigid wings is that the entire airborne system, consisting of wing, tensile support system and in some cases also a suspended airborne control unit, is considerably larger for comparable traction force. This is due to the fact that a rigid wing can endure a much higher wing loading than a membrane wing and that it uses aerodynamic control surfaces with wing-integrated actuators which allow a more compact design. For wind tunnel measurements large geometries are typically downscaled to fit into the test section of the tunnel. To ensure that the flow field is not affected by the scaling, the principle of dynamic similarity has to be enforced by maintaining a constant Reynolds number $Re = \rho v c / \mu$. A common method to compensate a decreasing chord length c is to increase the flow velocity v . However, downscaling a tethered membrane wing for wind tunnel testing is problematic, because due to aeroelasticity

the aerodynamic characteristics depend not only on the wing geometry but also on its deformation behavior. To account for this, the material properties of the wing and tether would have to be scaled accordingly, which is practically not feasible because the membrane is a woven fabric material, that is partially arranged as ~~multi-layer~~ multilayer composite and with rigid reinforcements, and the tether is a braided and coated line (Bosman et al., 2013).

5 A wind tunnel study of a small but full-scale ram air wing was presented by de Wachter (2008). The wing with a projected area of 5.2 m² was suspended upside down in the test sections of two different large wind tunnels to determine the shape under aerodynamic load by photogrammetry and laser scanning. This shape was then used as static boundary condition for steady CFD analysis, with the aim to assess the computational prediction quality without the added complexity of the deforming membrane structure. The study contributed important knowledge about ram air wings at the lower end of the size range. In
10 the same framework project, Bungart (2009) performed a coupled CFD and finite element analysis of a ram air wing section, deriving aerodynamic coefficients and deformed shape for the entire range of angle of attack. The analysis showed that the chambered design (chambers are separated by ribs, topskin and bottomskin, see Fig. 1) with upper and lower skin and the airfoil defined by a small number of ribs (connecting topskin and bottomskin) leads to ballooning. A similar effect can be observed with LEI tube kites, where the canopy is bulging out between the struts (inflatable tube providing structure) that similar to
15 the ribs define the design shape. It is obvious, that these aeroelastic phenomena have to be taken into account by high-fidelity analyses. Subsequently, Breukels (2011) developed a multibody model and Bosch et al. (2014) a finite element model of the flexible wing, bridle line system ~~and~~ (line system which supports the wing structure and merges these lines into steering or power lines) and tether. In both approaches the same correlation derived by parametric CFD analysis is used to evaluate the aerodynamic load distribution as a function of angle of attack and wing deformation. While succeeding in simulating complete
20 flight maneuvers relevant for AWE, the two studies did not include validations by wind tunnel experiments. It can be concluded that validated aeroelastic models of entire tethered membrane wings are neither available at present, nor will they be sufficiently fast to be used in the design process where rapid iterations are required.

For this reason, less complex simulation models have been developed, describing the whole kite system as a point mass, a cluster of point masses (Fechner et al., 2015) or a rigid body (de Groot et al., 2011; Gohl and Luchsinger, 2013). These
25 models do not explicitly describe the aeroelastic behavior of the wing and require as input the detailed aerodynamic properties of the kite system, including information about the steering behavior. In this respect, Erhard and Strauch (2013a, b); Fagiano et al. (2014) and Jehle and Schmehl (2014) have proposed empirical turn rate laws relating the turn rate of the wing to the steering input. The transition from powered state (high angle of attack) to depowered state (low angle of attack) is covered by an empirical correlation (Fechner et al., 2015). According to Fagiano and Marks (2015), such lower complexity models have
30 already reached a quite mature state, but new insights appear to be difficult to gain without experimental analysis.

However, despite the strong need for reproducible experimental data, only few dedicated studies have been performed so far. Stevenson (2003) developed a tow test method to support the research and development of surf kites. The constant relative airflow was generated by driving the towing vehicle along a beach section. The data acquisition system recorded the lift-to-drag ratio as well as the lift coefficient both as functions of the ratio of the sum of steering line forces to total tensile force. Inspired
35 by a method described by Stevenson et al. (2005), a simple stationary test setup for the beach was used by van der Vlugt (2010)

to determine the lift-to-drag ratio of surf kites from the achievable flight speed when performing crosswind sweeps close to the ground. Dadd et al. (2010) described a tow test with the measurement rig mounted on a trailer such that it could be used for stationary as well as for tow testing. A tow test experiment for characterization of kites used as part of an AWE system was described by Costa (2011). Next to the movement of the kite and the line forces also the deformation was measured, using an image correlation system. Within the same framework project, Wood et al. (2017) presented a control strategy for flying figure-of-eight crosswind maneuvers during tow tests.

In none of the outlined test procedures the manual control input was recorded. However, for systematic aerodynamic parameter identification a recording of the steering inputs is crucial (de Groot et al., 2011; Mulder et al., 1994). We started the project TETA at TU Berlin with the aim to measure the dynamic properties of kites under reproducible conditions for repeatable steering input (Hummel, 2017; Hummel and Göhlich, 2017). The developed test setup is suitable for quantitative assessment of different types of tethered membrane wings and can be used stationary or moving at variable velocity to simulate different wind speeds as well as to reduce the influence of gusts.

This paper is organized as follows. Section 2 outlines the measurement concept and describes the details properties to be measured. In Sect. 3 the setup and design of the test bench is described, including the required sensor equipment. Section 4 continues with a brief overview of the data acquisition process. In Sect. 5 the experimental results are presented and discussed. In the conclusions, future research and improvements of the measurement concept and the implemented test bench are outlined.

2 Measurement Concept

A schematic side view of the tow test is illustrated in Fig. 2, including the aerodynamic lift and drag force components \mathbf{F}_L and \mathbf{F}_D , respectively, as well as the aerodynamic force \mathbf{F}_A . The resultant force acts in the aerodynamic-center-of-center of pressure

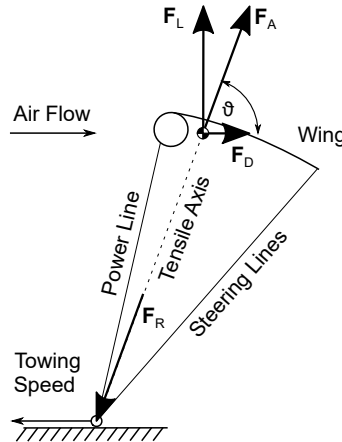


Figure 2. Schematic side view of the tow test with the wing in steady state equilibrium and effect of gravity neglected ($\mathbf{F}_R + \mathbf{F}_A = 0$ with $m\mathbf{g} = 0$ and $\mathbf{F}_R = \mathbf{F}_{PL} + \mathbf{F}_{SL,l} + \mathbf{F}_{SL,r}$)

of the wing. A steady towing state is reached when the wing is not moving anymore relative to the towing vehicle. In this state, the aerodynamic and gravitational forces acting on the wing are balanced by the tensile forces \mathbf{F}_{PL} , $\mathbf{F}_{SL,l}$ and $\mathbf{F}_{SL,r}$ acting in the power and steering lines. Because flexible lines can not support bending loads these tensile forces are always aligned with the lines, as illustrated in Fig. 3. The dashed line in Fig. 2 defines the tensile axis of the airborne system, which in case of a

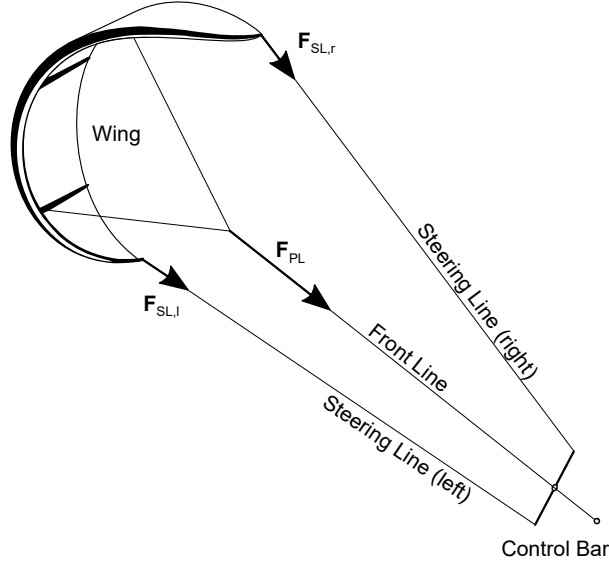


Figure 3. Forces acting in the power and steering lines

- negligible effect of gravity is aligned with the resultant force \mathbf{F}_R and inclined to the horizontal plane by the elevation angle ϑ .
- As illustrated in Fig. 3, the power line is attached to the towing point at the moving test rig. The flight behavior of the wing is controlled by a bar which can slide along the power line and attaches at its ends to the two steering lines. This setup is commonly used for kitesurfing and allows individual actuation of the left and right steering lines and changing the effective length of the power line. The effective length of the power line is defined as the distance between the kite attachment point and the control bar. For the “Linear Power” maneuver the control bar is automatically retracted along the power line. During this
- the effective length l_{PL} of the power line changes from $l_{PL,0}$ for the depowered state to $l_{PL,1}$ for the powered state, as illustrated in Fig. 4. Accordingly we define the relative power setting

$$u_p = \frac{l_{PL} - l_{PL,0}}{l_{PL,1} - l_{PL,0}}, \quad (1)$$

- which varies between $u_p = 0$ for the depowered state and $u_p = 1$ for the powered state. A similar nondimensional variable, the relative depower setting $u_d = 1 - u_p$, was introduced by Fechner et al. (2015) to quantify the actuation of an airborne control unit suspended below the wing.

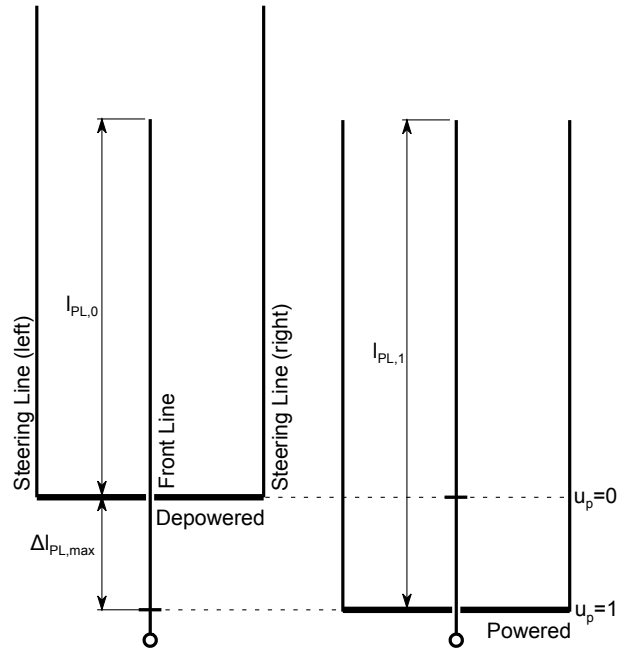


Figure 4. Limiting states of the “Linear Power” maneuver

In the following we describe the wing properties that are used to characterize the flight dynamic ~~behaviour~~behavior of the wing. In order to facilitate an easy assessment of the measurement results as well as the reliability of the method, post-processing calculations to optimize the estimation of the properties were not carried out. Since kites were tested at same wind speed, of same size and control bar settings, a relative comparison of the wings is still possible.

5 2.1 Aerodynamic Coefficients

The aerodynamic coefficients are non-dimensional parameters that describe the aerodynamic properties of a wing. For a steady towing situation as illustrated in Fig. 2 we can determine the lift, drag and resultant aerodynamic coefficients of the entire system as

$$C_L = \frac{2F_L}{\rho A v^2} = \frac{2 \sin \vartheta F_R}{\rho A v_a^2}, \quad (2)$$

$$10 \quad C_D = \frac{2F_D}{\rho A v^2} = \frac{2 \cos \vartheta F_R}{\rho A v_a^2}, \quad (3)$$

$$C_R = \frac{2F_R}{\rho A v_a^2}, \quad (4)$$

where ρ is the air density, A the surface area of the wing and v_a the apparent wind velocity. By definition the aerodynamic drag is aligned with the apparent wind velocity, the aerodynamic lift is perpendicular.

Based on the resultant aerodynamic force coefficient we can determine the depower capability of the wing. This parameter can be calculated as relative difference of maximum and minimum aerodynamic forces

$$\gamma = \frac{C_{R,max} - C_{R,min}}{C_{R,max}}, \quad (5)$$

evaluating the entire range $1 > u_p > 0$. For ground-generation AWE systems it is the traction force of the kite that is converted into electricity (Schmehl et al., 2013). For this variant of the technology, the kite is generally operated in consecutive pumping cycles and for maximizing the energy output, the resultant force coefficient C_R has to be maximized during the traction phases and minimized during the retraction phases. For a flexible membrane wing, a good depower capability and flight stability are two conflicting design drivers (van der Vlugt et al., 2013).

2.2 Aerodynamic Efficiency

The aerodynamic efficiency of a wing can be expressed as the ratio between the aerodynamic lift and drag force components. For a steady towing situation as illustrated in Fig. 2 the lift-to-drag ratio can be calculated from the elevation angle ϑ as

$$\frac{F_L}{F_D} = \frac{C_L}{C_D} = \tan \vartheta. \quad (6)$$

The lift-to-drag ratio is also a measure for the achievable flight speed of the kite in crosswind motion (van der Vlugt, 2010; Schmehl et al., 2013).

2.3 Tether Forces

The tensile forces acting in the power and steering lines are shown in Fig. 3. The ratio of the steering line forces to the power line force

$$f = \frac{F_{SL,l} + F_{SL,r}}{F_{PL}} \quad (7)$$

characterizes the load distribution between the rear and front parts of the tethered wing, which allows the validation of simulation approaches. Additionally, in order to characterize sport kites this parameter was used so far intuitively to describe the perceived steering forces. Hence, a quantitative comparison of different wings regarding the load distribution between power and steering lines is feasible.

3 Test Bench Setup

The following section gives a brief overview of the developed test bench. The main design goals are as follows: (1) using the entire kite system (including the unscaled kite and tether as well as the common steering input device) to generate realistic measurement data, (2) providing constant and controllable flow conditions, (3) allowing repeatable and automated steering inputs, (4) as little as possible of an impairment to the wing and its control unit by attachments, (5) ensuring an easy transport and tow of the test bench. The final version of the test bench is shown in Fig. 5 and the schematic principle is illustrated in Fig. 6.

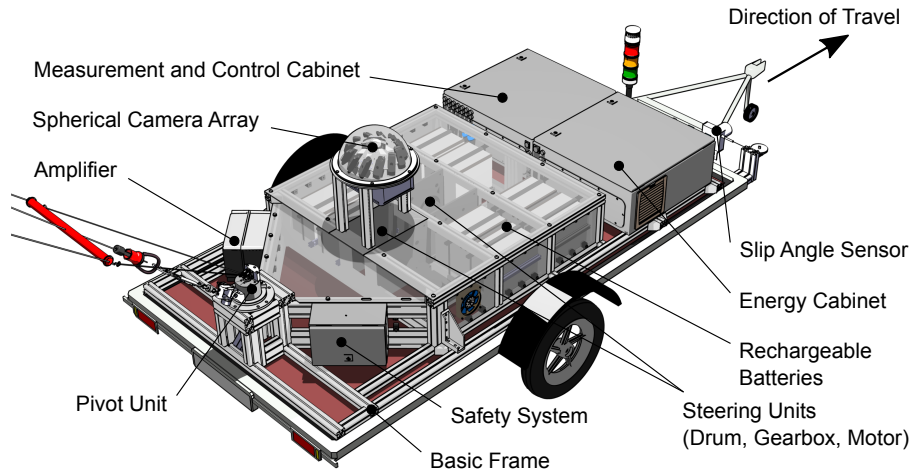


Figure 5. Components of the trailer-mounted test bench

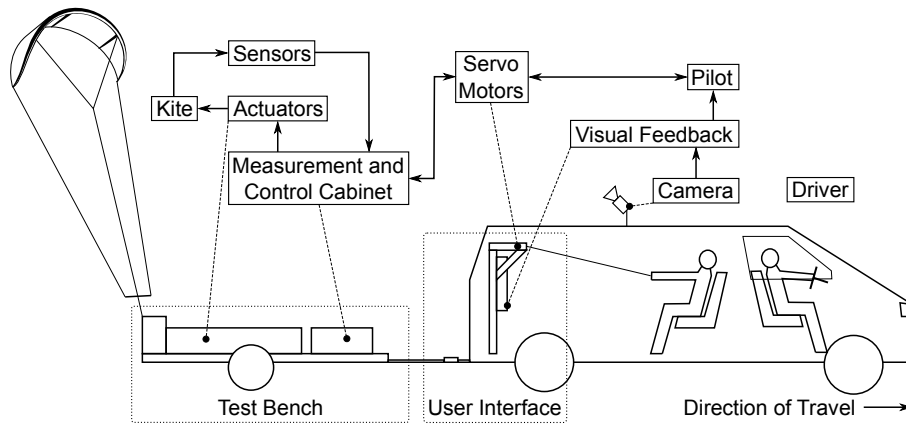


Figure 6. Towing test schematic

3.1 Structural Design

With regard to the acquisition costs of the towed platform, a permanent mounting on a car trailer was decided. This solution allows to use any given car for towing and thereby avoid additional costs. However, in contrast to heavier vehicles (e.g. four wheel vehicles with a driver's cab), the influence of oscillations into the test bench by the tethers is expected. This results in an additional requirement for the design of the test bench. All components are connected in such a way that it is possible to change the driving platform in the future to further improvements. For example, vibrations induced by the single-axle trailer could be greatly reduced by mounting the test rig on a heavier platform.

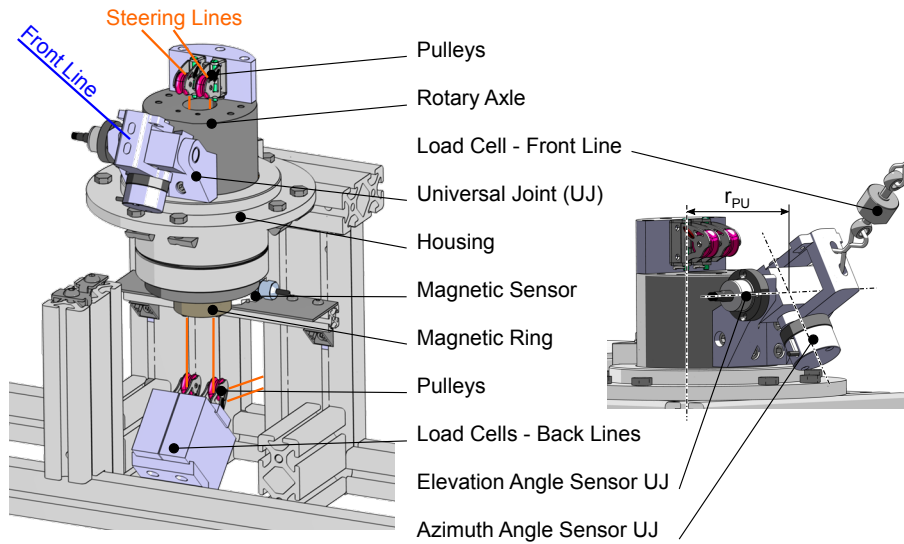


Figure 7. Design of the pivot unit

The basic frame is used to mount the test bench modules and absorb the load, in particular the line forces. It is assembled from aluminum profiles, to avoid corrosion and easily afford subsequent design modifications. The kite is connected to the test bench by the pivot unit, which is located in the rear of the trailer (in relation to the direction of travel).

The pivot unit is shown in Fig. 7. It is designed to have a minimum inertia, which allows a smooth untwisting of the lines. This leads to an automatic alignment of the line connection points towards the direction of the power line and thus towards the direction of the wing within the wind window. The required torque for untwisting is realized by the tensile force acting on the power line. The steering lines are of the test bench are connected to the ends of the control bar and passed through the center of the rotary axle to realize minimal inertia. They are redirected by pulleys, connected to rope drums that are operated by motors (see Fig. 5, steering units). The tether forces are measured by means of load cells in the steering lines, not interconnecting the lines. A magnetic sensor attached to the static part measures the rotation of a magnetic ring and thus of the unit itself. The rotary part essentially consists of the rotary axle. The universal joint is attached to it, transmitting the force of the power line.

Each steering unit, which controls the length of a steering line, consists of a cable drum, a gearbox and a motor. The motors are each operated by a servo controller, located within the measurement and control cabinet. The steering units are located in the middle of the test bench, together with the batteries. Since motors and batteries are the heaviest components of the test rig, this arrangement allows the center of gravity to be close to the wheel axis, in order to prevent a static tilting of the trailer (unavoidable tilting of the trailer is measured by an inertial sensor to correct the elevation angle described in Sect. 3.2). The design force was set to 5000 N. In the front area, in the direction of travel, space was provided for the control cabinets.

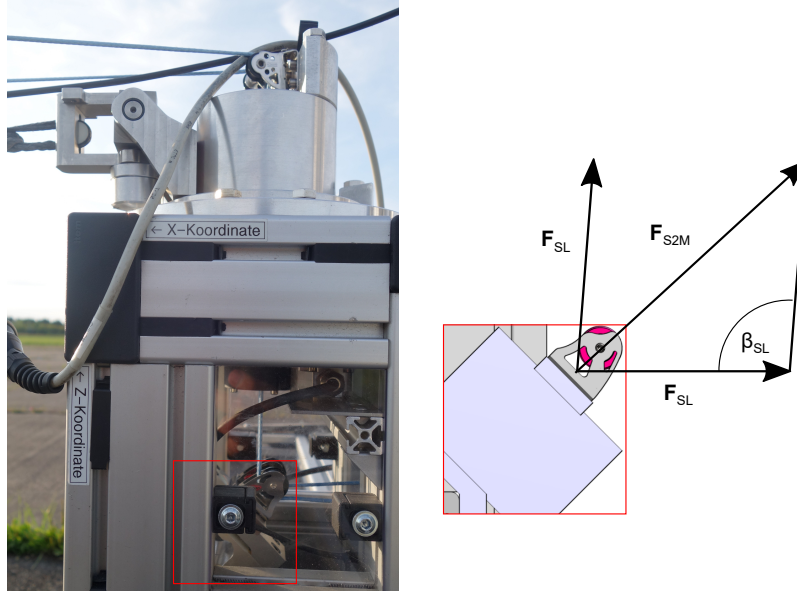


Figure 8. The resultant force F_{res} on the load cell of a steering line

3.2 Sensor Systems

This section gives a brief overview of the sensor technology, used to achieve the measuring results, which are described in Sect. 5. Components are termed as a sensor system, which serves the purpose of determining certain measuring variables and for which a clear distinction from the overall system is possible. For a complete documentation of all sensor systems please refer to Hummel (2017).

The exact measurement of the line forces is highly prioritized due to the need for the majority of kite properties (see Sect. 2). To avoid impairments caused by additional masses of the load cells within the steering lines, the load cells are installed without insertion. Furthermore, this also enables the use of load cells with a higher accuracy, which is related to a higher mass of the load cells (HBM S2M, precision class of 0.02%, nominal Force ~~1000 N~~ 1000 N, which results in an absolute error of $\pm F_{S2M} = \pm 0.2 N$). The resultant forces F_{S2M} can be obtained from Eq. (8), as illustrated in Fig. 8, assuming that the friction of the pulley is negligible. As shown in Eq. (8), the relation between the force measured at the load cell and the force acting on the steering lines is linear. This is caused by the constant line angle β_{SL} . With $\beta_{SL} = 90^\circ$ the maximum measurable force within the steering lines is 707 N. Field tests have shown that this value is high enough for common wing sizes. If a higher maximum force is required in the future, the load cells can be exchanged by sensors with a higher nominal force. However, this will be accompanied by reduced accuracy.

$$F_{S2M} = \sqrt{2 - 2 \cos \beta_{SL}} F_{SL} \quad (8)$$

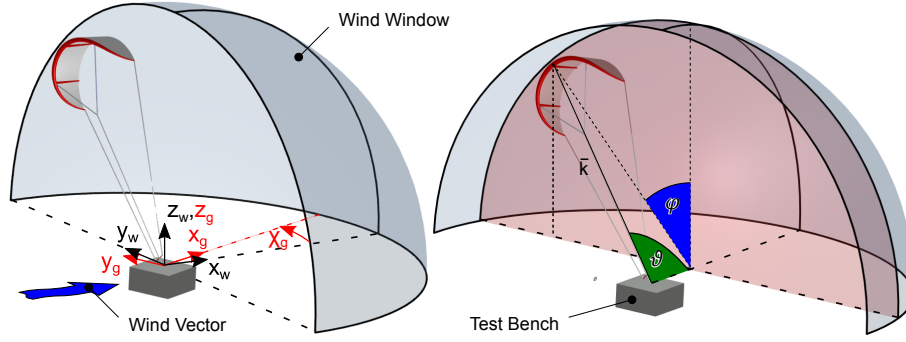


Figure 9. left: Cartesian coordinates (for $X_g < 0^\circ$; Index g : reference to the test bench; Index w : reference to the wind direction); right: elevation angle ϑ and azimuth angle φ (for $X_g = 0^\circ$)

The measurement of the force in the power line is performed by an interposition of the load cell (see Fig. 7). A load cell with a nominal force of ~~5000 N~~ 5000 N is used, which has a precision class of 0.2% (HBM U9C). The absolute error results in $\epsilon_{F_{U9C}} = \pm 10 N$. The signals of the load cells are amplified and then sent to an extension board of the sbRIO. The amplifiers are located as shown in Fig. 5.

- 5 Measuring the angle of the power line is intended to enable a simple and reliable determination of the elevation angle ϑ as well as the azimuth angle φ , which are illustrated in Fig. 9. The polar coordinate system, and in particular the elevation angle ϑ , is based on Erhard and Strauch (2013a). The definition of the elevation angle is suited for determining the aerodynamic efficiency, even if the kite is not located within the x-z plane in reference to the wind direction. In contrast to other definitions, i.e. β in Schmehl et al. (2013), ϑ does not vary for a constant glide ratio (see Fig. 9, intersection of red plane with grey wind
- 10 window). This angle definition facilitates to calculate the glide ratio even if the kite occasionally deflects from the symmetry plane of the wind window (downwind position). The rotary axle has a non-neglecting rotational inertia and therefore the measurement of the azimuth and elevation angle, with respect to the test bench, is composed of three sensors, which are shown in Fig. 7. First, the rotational deviation within x-y plane is calculated by the sum of the rotation angle of the rotary axle Φ_{RA} (measured by the magnetic sensor) and the measured wind direction X_g . The magnetic ring of the magnetic sensor has a
- 15 sufficiently large inner diameter to pass the steering lines through it. Thus, it is possible to mount it underneath the rotary axle without impairing the functionality of the pivot unit. Second, the rotational deviation of the universal joint is measured by the elevation angle sensor (Θ_{UJ}) and the azimuth angle sensor (Φ_{UJ}) to realize low friction as well as a negligible influence on the line angle. As a result, the universal joint will already deflect at low forces in the power line.

The wing position ~~$\vec{k}_{\vec{w}}$~~ $\vec{k}_{\vec{w}}$ within the wind window can be calculated by Eq. (11), as a result of the sensors, where index g

20 indicates the reference to the test bench and index w to the wind direction coordinate system.

$$\bar{\bar{M}}_w = \begin{pmatrix} \cos(\Phi_{RA} + X_g) & -\sin(\Phi_{RA} + X_g) & 0 \\ \sin(\Phi_{RA} + X_g) & \cos(\Phi_{RA} + X_g) & 0 \\ 0 & 0 & 1 \end{pmatrix} \begin{pmatrix} \cos\Theta_{UJ} & 0 & -\sin\Theta_{UJ} \\ 0 & 1 & 0 \\ \sin\Theta_{UJ} & 0 & \cos\Theta_{UJ} \end{pmatrix} \begin{pmatrix} \cos\Phi_{UJ} & -\sin\Phi_{UJ} & 0 \\ \sin\Phi_{UJ} & \cos\Phi_{UJ} & 0 \\ 0 & 0 & 1 \end{pmatrix} \quad (9)$$

$$\mathbf{k}_w = \bar{\bar{M}}_w \begin{pmatrix} r \\ 0 \\ 0 \end{pmatrix} + \begin{pmatrix} \cos(\Phi_{RA} + X_g) & -\sin(\Phi_{RA} + X_g) & 0 \\ \sin(\Phi_{RA} + X_g) & \cos(\Phi_{RA} + X_g) & 0 \\ 0 & 0 & 1 \end{pmatrix} \begin{pmatrix} r_{PU} \\ 0 \\ 0 \end{pmatrix} \quad (10)$$

$$\mathbf{k}_w = r \begin{pmatrix} \cos(\Phi_{RA} + X_g) \cos\Theta_{UJ} \cos\Phi_{UJ} - \sin(\Phi_{RA} + X_g) \sin\Phi_{UJ} \\ \sin(\Phi_{RA} + X_g) \cos\Theta_{UJ} \cos\Phi_{UJ} + \cos(\Phi_{RA} + X_g) \sin\Phi_{UJ} \\ \sin\Theta_{UJ} \cos\Phi_{UJ} \end{pmatrix} + r_{PU} \begin{pmatrix} \cos(\Phi_{RA} + X_g) \\ \sin(\Phi_{RA} + X_g) \\ 0 \end{pmatrix} \quad (11)$$

With r representing the tether length and r_{PU} representing the distance between the axis of the rotary axle and the pivot point of the universal joint (see Fig. 7). From Eq. (12) the resulting elevation angle ϑ_w and azimuth angle φ_w can be determined.

$$k_w = r \begin{pmatrix} \cos\vartheta_w \\ \sin\varphi_w \sin\vartheta_w \\ \cos\varphi_w \sin\vartheta_w \end{pmatrix} \quad (12)$$

3.3 Error Analysis

The error analysis of the measured data leading to the results of Sect. 5 is described hereafter.

3.3.1 Line Forces

The load cells connected to the steering lines, mentioned in Sect. 3.2, have a precision class of 0.02% with a nominal force of 1000 N. This results in an absolute error of $\varepsilon F_{S2M} = \pm 0.2$ N. The load cell within the power line has a precision class of 0.2% with a nominal force of 5000 N. The absolute error results in $\varepsilon F_{UG} = \pm 10$ N.

3.3.1 Wind Speed

The absolute error of the wind speed measurement for the weather station according to the manufacturer is $\varepsilon v_w = 0.05$ m/s. The error of the wind direction measurement is given by $\varepsilon X = 1^\circ$.

As-For calculating the kite properties, the resulting wind speed at kite level is needed, whereas the wind speed on top of the towing vehicle is measured. Thus, as an additional error for the given test setup, the error due to the height difference in wind measurement must be investigated. The weather station is located on top of the towing vehicle at a height z_{REF} of 3 meters. Depending on the length of the tether, the kite typically reaches a height z of 15 to 30 m. The most commonly used
 5 extrapolation method is the wind power law (Akdağ et al., 2013; Ghita et al., 2013). This method is supposed to be valid within the ground level boundary layer ($< 100m$). Empirical data presented by Archer (2013) shows that this model is well suited to approximate wind profiles by measuring at a reference height z_{REF} and thus to estimate the wind speed $v_{tw,plaw}(z)$ on kite level z . The wind power law is defined as follows,

$$v_{tw,plaw}(z) = v_{tw}(z_{REF}) \left(\frac{z}{z_{REF}} \right)^\alpha \quad (13)$$

- 10 Here, $v_{tw}(z_{REF})$ indicates the static true wind speed at a fixed position above ground at an altitude z_{REF} (Index tw : true wind speed) which also can not directly be measured, because of the moving test bench. The coefficient of friction α depends on the terrain type and increases with rising terrain roughness. Despite testing on a former airfield, the coefficient of friction is assessed in an overestimating way, in order to perform a safe calculation (this overestimation will result in an overestimated static wind speed on kite level, which in turn will result in an overestimation of the resulting error $\delta v_{w,real}$). Thus, it is assumed
 15 as 0.25 for wooded countryside with many trees. If the true wind vector $v_{tw}(z_{REF})$ points towards the opposite direction of travel, the influence of the relative error $\delta v_{w,real}$ of the wind speed $v_{w,real}(z)$ at kite level will be at a maximum. This is because the relative portion of the true wind speed $v_{tw}(z_{REF})$ is maximized and the required speed of the towing vehicle $v_p(z_{REF})$ to reach the desired testing speed $v_w(z_{REF})$ is minimized:

$$v_p(z_{REF}) = v_w(z_{REF}) - v_{tw}(z_{REF}) \quad (14)$$

- 20 The resulting wind speed $v_{w,real}$ at flight altitude z is composed of the traveling speed v_p and the theoretical wind speed according to the wind power law $v_{tw,plaw}(z)$:

$$v_{w,real}(z) = v_p(z_{REF}) + v_{tw,plaw}(z) \quad (15)$$

- The resulting error is reduced with decreasing altitude, decreasing natural wind and increasing target speed. At present, line lengths of 24 meters are used while the minimum target speed is set to 11 m/s. The relative error can thus be assumed as
 25 $\delta v_{w,real} \leq +20\%$. For a detailed calculation please refer to Hummel (2017).

3.3.2 Elevation Angle

The angle sensors of the universal joint have an absolute measuring error of $\varepsilon\Theta_{UJ} = \varepsilon\Phi_{UJ} = \pm 0.72^\circ$, while the magnetic sensor has an absolute measuring error of $\varepsilon\Phi_{RA} = \pm 0.3^\circ$. In order to determine the resultant error from the three angle

sensors, the error-prone angles ϑ and φ must be calculated analogously to Sect. 3.2. The maximum error was determined using a MATLAB script. At first, the error-free angles were calculated, followed by a calculation of the error-prone angles for each angle combination. These error-prone angles result from a combination of the minimum and maximum values, which arise due to the individual errors, mentioned before. The maximum error of the elevation angle in the coordinate system of the test bench is $\varepsilon\vartheta_g = 1.2^\circ$. If the error of the weather station $\varepsilon X = 1^\circ$ is added to the error of the magnetic sensor $\varepsilon\Phi_{RA}$, the theoretical maximum error of the elevation angle within the wind direction coordinate system results as $\varepsilon\vartheta_w = 2.1^\circ$.

3.4 User Interface

The developed user interface (Barstand) allows to manipulate the control bar position of the test bench. The pilot also receives a haptic feedback of the line forces via the interface. The system was designed based on the assumption that an increase in safety and reliability is achieved by an improved perception of the prevailing flight condition, when a fully or semi manual flight is performed. The pilot should be able to estimate the line forces without numerical display elements in order to extend the pilots perception of the flight situation. As a result, this device allows the subjective evaluation of the kite properties.

The user interface is located inside the towing vehicle and equipped with a common control bar, used to control sport kites (see Fig. 10). The measured line forces are induced to the lines of the user interface by means of winches, operated by servomotors. The force acting on the power line is transferred to the pilot via a harness used for kitesurfing. The motor position and thus the current bar position is determined by integrated encoders. This setup enables a control of the wing, which is close to reality, by moving a common control bar as well as by transmitting the scaled forces acting on the lines. The maximum force of the steering lines was set to 50 N and the force of the power line to 350 N. This determination was made to avoid a physical overstressing of the pilot and to limit the size of the actuators. The measured line forces must therefore be scaled by a proportionality factor.

The visual feedback is realized by a display shown in Fig. 10. Caused by the integration of the user interface into the towing vehicle a direct view of the wing is impossible. The image is taken by means of a wide-angle camera atop the roof of the vehicle. In order to enable a subsequent video evaluation, the recorded data is stored on the camera's internal memory card. When the measurement procedure is started by the pilot, the video recording is initiated automatically by the sbRIO (central control unit, see Sect. 4.1). An LED is placed within the visual range of the camera for a synchronization of the video and the measured data later on. This enables the synchronization of the beginning of data recording with the beginning of the video.

To record the measurement data acquired from the sbRIO, as well as performing control inputs to set up the test run, a notebook is used as a host computer. The host computer communicates with the sbRIO via network interface. During a test run, the notebook is placed in front of the pilot so that a perception of the numerical display elements of the host computer is possible. During a test procedure the pilot is not required to execute inputs on the host computer.

Furthermore a foot pedal is connected to the host computer which is used to execute maneuvers in the testing mode. When the pedal is actuated by the pilot, the previously set maneuver is executed by the sbRIO. Depending on the degree of automation, the pilot is enabled to act out certain steering inputs via the control bar. As soon as the pilot releases the pedal, the maneuver is terminated and the kite can be controlled manually again.

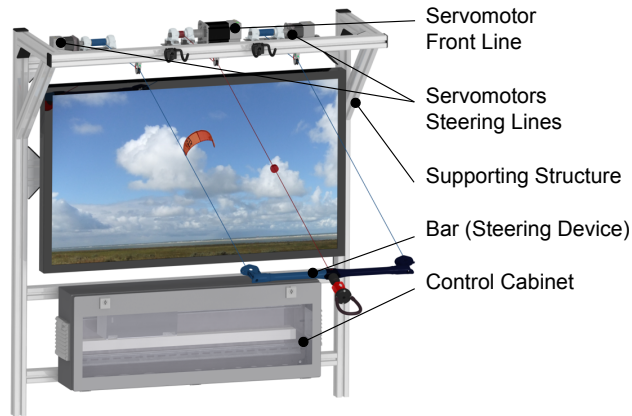


Figure 10. Design of the user interface (Barstand)

4 Data Acquisition

4.1 Data Processing System

This section describes the structure of the data processing hardware of the test bench, briefly. A schematic diagram is shown in Fig. 11. The data processing system as well as the DC power supply is localized within the measurement and control cabinet (see Fig. 5). As shown in Fig. 11, the National Instruments' sbRIO 9632 serves as the central control unit. It is connected to various components, such as sensors, via a self made custom interface board. The servo controllers of the motors mentioned in Sect. 3.1 communicate via a CAN module with the sbRIO. A network interface is used to communicate with the host computer as well as retrieving measured values of the spherical camera array. The sbRIO has been chosen because of the implemented central processing unit (CPU) as well as the field programmable gate array (FPGA).

- 10 The CPU allows the main control algorithm (the real-time operating system; RTOS) to be executed in real-time. To ensure a safe test operation, a real-time capability has been required. In particular, control inputs have to be executed in a predefined time. For this purpose, a deterministic loop was introduced within the RTOS (with a maximum execution period of 20 ms). This allows the motors to be addressed at a frequency of 50 Hz. The FPGA processor, on the one hand, is used as an access to the analogue and digital interfaces via the internal bus of the sbRIO. On the other hand, programs can be implemented which are
- 15 converted into a logic circuit by means of the integrated gates. Due to the configurable logic circuit, a parallel signal processing is possible, which increases the speed of the data processing.

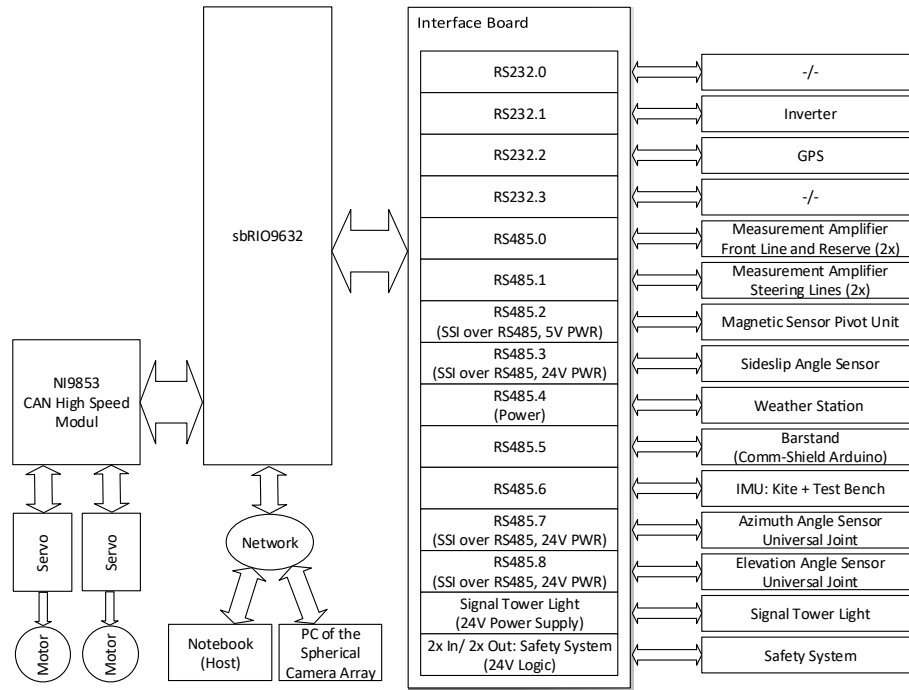


Figure 11. Measuring and control diagram

4.2 Experimental Setup

The dynamic test procedure, used in this paper, is described below. Dynamic tests are characterized by moving the test bench. The procedure can be carried out on any straight track. It is of paramount importance that the ground is as plane as possible to reduce oscillation. The measurements within this work have been carried out on the former airport Pütznitz, Germany. The target wind speed was set to 22 kn (11.3 m/s). Fig. 12 shows the towing vehicle with the test bench in measuring operation. Measurements are solely conducted on the straight sections. As described above, tests are carried out on days with as little wind as possible. Testing under these conditions allow a performing of multiple maneuvers without landing the kite since the track can be run both ways.

To launch the kite, it is set up behind the towing vehicle, placed on its trailing edge and lines tightened. When accelerating the test bench, the kite does an ascent movement in the direction of the zenith. The driver of the vehicle is supplied with a display, showing the duplicated view of the host computer. That way, he can assess the current flight situation as well as the currently measured wind speed. The driver adjusts the desired wind speed via the cruise control of the towing vehicle. After reaching the target speed, the maneuvers can be carried out.



Figure 12. Dynamic test procedure

4.3 Measurement Data Evaluation

The measurement data is evaluated by means of the software Diadem, which is originated by the company National Instruments, also supplying the software for the host as well as the measurement and control unit.

The implemented script is used to preprocess, process and display the measurement data. First, the desired measurement files are transferred to the script. Then, each measurement file is preprocessed in a loop. This includes, among other functions, an automatic detection of maneuvers and a distinction between driving along the straight track and turnaround. To obtain the desired graphs, statistical values are calculated from the maneuvers. The graphs as well as an overview of the measured data are then added to a report PDF for each measurement file. Once each measurement file has been processed, the results are summarized in an additional overview to allow a comparison between each file.

5 Results

This section presents the obtained results for the wing properties defined in Sect. 2. The taken measurements were carried out by means of the maneuver “Linear Power” in order to demonstrate the functionality of the test bench and the feasibility of the developed test procedure. Before starting the maneuver, the wing is positioned and stabilized by the pilot at the zenith position within the wind window. The foot pedal connected to the host computer is then manually actuated to launch the maneuver. The power position is automatically increased by the sbRIO up to $\Delta l_{PL,max} = 500$ mm (see Fig. 4) with a constant speed over a period of 4.5 seconds. The pilot can still execute steering inputs to keep the kite in a stable position at the zenith.

The measurement diagrams are shown in the following subsections. Only maneuvers lasting a given minimal timespan were taken into account. During some maneuvers an unintentional change of position or orientation (e.g. caused by gusts) led to the pilot aborting the maneuver, which can result in a too short maneuver, which in turn would make the statistical value calculation impossible. The valid results are plotted against the power ratio u_p . The determination of the angle of attack was not feasible

5 within the scope of this work and will be done in future research of this project.

5.1 Tested Kites

For characterization of the dynamic properties, five different kites with the same surface area of 10 m^2 were measured (denoted with kite A to E within the graphs). All kites are designed for different purposes in kite sport:

On the one hand, kite C was designed to ride efficiently upwind, i.e. affording a high traveling angle in wind direction. In
25 addition, high jumps with a long air time should be possible. Therefore, a high aerodynamic efficiency associated with a high resulting force is required. Furthermore this kite should provide a high depower capability, resulting in a significant change of the lift coefficient.

The kites D and E have the same design, but originated from different model years. Because of their shape, these kites feature a significant contrast to the other kites. Significantly more wing area is located at the wing tips, which should result in lower
15 aerodynamic efficiency as well as a lower lift coefficient.

The Kite A is supposed to be an all-rounder which means the resulting lift and efficiency should be positioned between C and D/E.

Kite B is designed to achieve good handling and turning abilities as well as providing a good upwind performance at the same time. For this reason the steering forces have to be higher while depowered ($u_p \simeq 0$), compared to the other kites.

20 The measurements were conducted during two different days (marked with day 1 and 2). For each property, a figure is shown which summarizes all measurement data into a single curve for each kite in order to compare the kites against each other. Additionally, these figures show the resulting error resulting from all maneuvers which where taken into account for a confidence interval of 95%.

5.2 Aerodynamic Efficiency

25 The measurement results of the elevation angle ϑ_w can be seen in Fig. 13. The resulting aerodynamic efficiency can be calculated by Eq. (6) (see Fig. 14). The different curves can be distinguished by height and progression.

As discussed in the previous chapter, it can be shown that kite C offers the highest and kites D/E the lowest aerodynamic efficiency. It can also be concluded, that a reliable repeatability within the same day is given. This finding was confirmed by further tests on different days. The only significant deviation was found after a long period between two test runs. The time
30 between day 1 and day 2 was exactly one year. The elevation angle differs between these days only by an offset. In order to determine this offset in the future and, if necessary, to compensate it, a reference wing kite was introduced, which is measured once every test day. The resulting curves of this reference kite should fit each other on different test runs. If an offset occurs, the starting points of the graphs can be corrected and thus the wings can still be compared relatively to each other. In order to

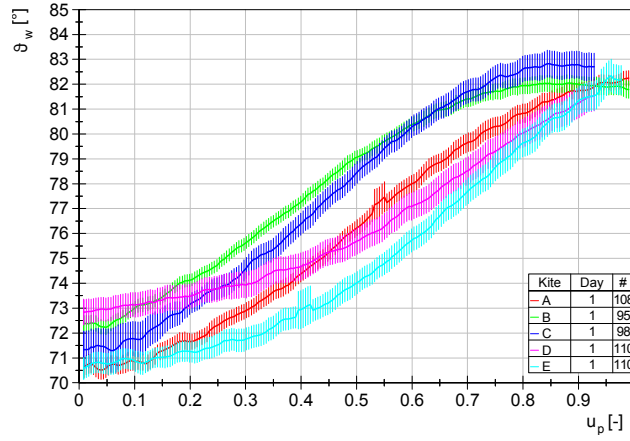


Figure 13. Elevation angle with resulting error ($P = 95\%$)

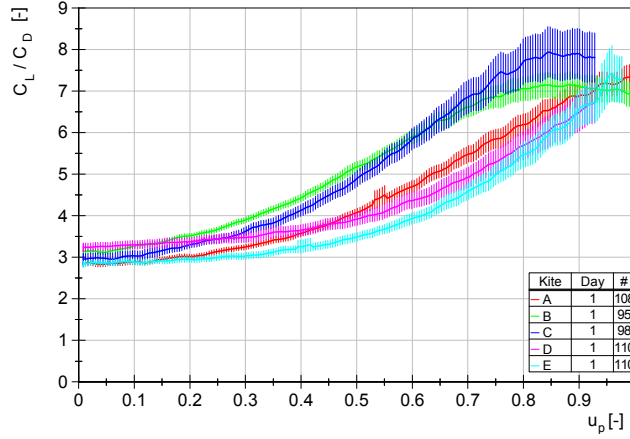


Figure 14. Aerodynamic efficiency (lift-to-drag ratio) with resulting error ($P = 95\%$)

fully compensate this deviation in the future, the initial horizontal alignment of the test bench will be measured by means of an inertial measurement unit. The deviation is most likely caused by changes in geometry being difficult to control, for example, a change in tire pressures of the trailer or the towing vehicle.

5.3 Lift Coefficient

- 5 The lift coefficient C_L is calculated according to Eq. (2) using the given manufacturer's surface area of 10 m^2 and a constant air density of $\rho = 1.184 \frac{\text{kg}}{\text{m}^3}$. The airflow velocity is assumed to equal the measured wind speed of the weather station. The total tether force is calculated by the sum of the measured forces of three load cells. Due to the high elevation angles, the resulting force coefficient C_R resembles C_L and is not shown separately (see Eq. (4) and Eq. (2) with $\sin(\vartheta_w > 70^\circ) \approx 1$)

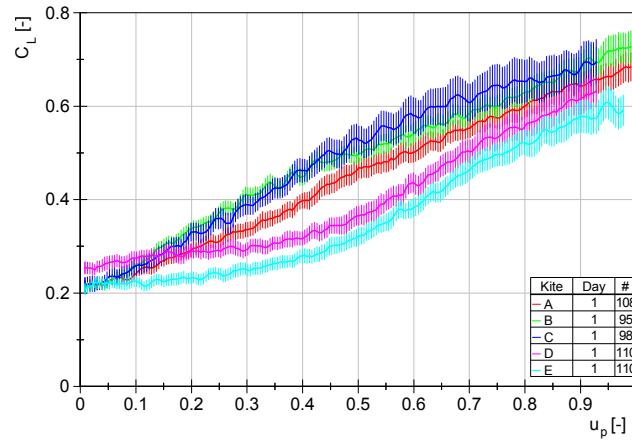


Figure 15. Lift Coefficient with resulting error ($P = 95\%$)

The resulting curves of the data sets are shown in Fig. 15. As predicted in Sect. 5.1, kite C offers the highest and kites D/E the lowest lift coefficient. The deviation between datasets of the same kite lies within the resulting error. The influence of the above-mentioned deviation of the elevation angle measurement on the lift coefficient is negligible.

As mentioned in Sect. 2.1, the depower capability for each kite can be calculated by the difference between the maximum and minimum values. Apparently, kites B and C are best suited for AWE systems using the pumping mode, because of their high depower capability as well as their high lift coefficient. A further distinction can be made based on the curve progressions. Kites A to C can be characterized by their degressive progression, whereas kites D and E are characterized by a progressive increase of the lift coefficient.

5.4 Force ratio

Figures 16 and 17 show the force ratio f between steering lines and power line which can be calculated by Eq. (7). In order to be able to estimate the reproducibility, for each kite property all eight data sets are first presented together within the same diagram (Fig. 16). Obviously, a distinction between the kites is possible. As a result of their different wing shapes, the curve progression of the kites D and E compared to the other kites is clearly different (progressive). Furthermore, the kites can be distinguished by height of the force ratio. With these curves as well as the force curves itself existing simulation models can be evaluated reliably.

For AWE systems the force ratio is of great importance, since it determines the steering possibility of the wing while fully depowered (especially during retraction phase). To guarantee the execution of control commands by transmitting the steering forces, the force ratio must not be too low.

~~All measurement files: Force ratio between steering lines and power line~~

~~Force ratio between steering lines and power line with resulting error ($P = 95\%$)~~

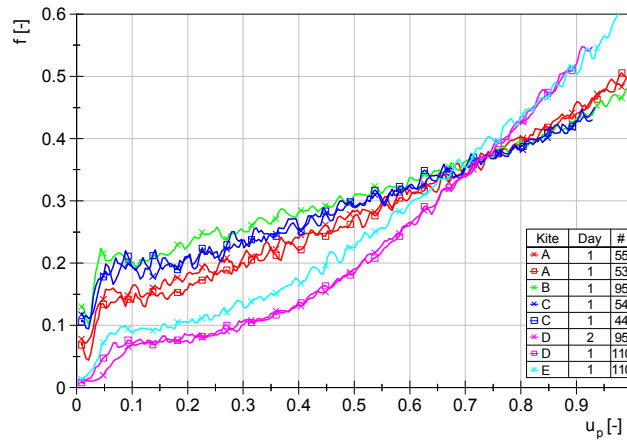


Figure 16. All measurement files: Force ratio between steering lines and power line

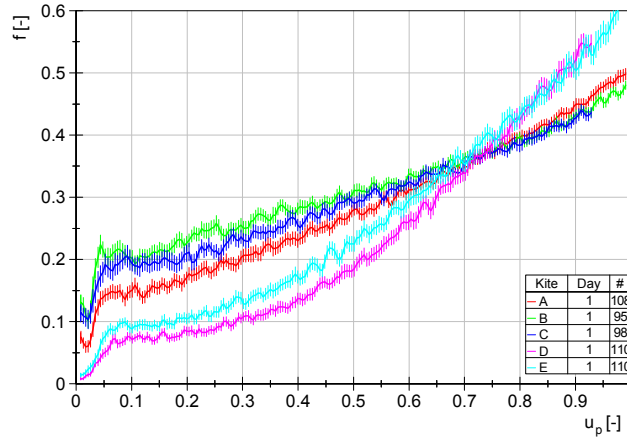


Figure 17. Force ratio between steering lines and power line with resulting error ($P = 95\%$)

6 Conclusion and Outlook

So far the reproducibleIn most cases, a reproducible, high-quality measurement of flight dynamic properties of tethered flexible wings was not feasible. However the knowledge of these properties is essential to evaluate existing simulation models as well as to characterize wings of AWE systems. As demonstrated in Sect. 5, the presented work fills this research gap. A unique test bench was developed to record these properties. It has been shown that a reproducible measurement of tethered flexible wings is possible. The repeatability was demonstrated by 8 recorded measurement files executing the membrane wings exceeds the available budget. Furthermore, existing approaches do not allow for a recording or even automation of steering inputs, which is crucial for the reproducibility of the experiment. In this paper, we have presented a unique tow test setup for automatic measurement of the dynamic properties of different wing types at full scale and under realistic conditions. The objective was to

demonstrate the methodology and particularly the repeatability of the test procedure. Using the maneuver “Linear Power” at the same target speed of 22 kn. With the help of the maneuver, the ratio between $\frac{L}{D}$ and steering lines was automatically varied. While the maneuver was executed by the central control unit, the pilot was able to manually adjust the line length between the steering lines line lengths – denoted as relative power setting – by measuring line forces and line angles. The ratio is varied automatically, while the pilot is manually adjusting the steering line lengths to keep the wing at the zenith position within the wind window. Differences between the measured kites as well as reliability could be shown. In order to improve the measuring accuracy, it is necessary to develop the test bench further. The accuracy of the airflow measurement can be greatly increased by measuring at wing height. In addition, the determination of the airflow direction could be implemented. This should greatly improve the accuracy in the calculation of aerodynamic coefficients. The identification of the true angle of attack can be noted as an additional option for the improved determination of the aerodynamic efficiency as well as the aerodynamic components. As mentioned above, however, a high development demand is assumed to be required for this purpose, as it is difficult to identify the angle of attack for fully flexible wings. Additionally, further improvements could be done in measurement data evaluation. For example, the quality of the measurement results can be increased by calculating the line sag and the influence of weight. In the scope of this paper post-processing calculations to optimize the estimation of the properties were not carried out, in order to facilitate an easy assessment of the measurement results kite at a fixed position relative to the towing vehicle. By automating the test cycles we can acquire mean values of high statistical quality with minimal errors. We have demonstrated the repeatability on the basis of eight recorded data sets using the maneuver “Linear Power” at a constant wind speed of 22 kn (11.3 m/s). We conclude from this study that it is feasible to objectively measure the flight dynamic properties of tethered membrane wings and to quantitatively assess and compare different wing designs.

Based on this work, we propose several functional enhancements for future research. By performing more sophisticated flight maneuvers the full operational envelope of AWE systems can be covered. By completing the automation of the process we expect a significant increase of measurement accuracy which will improve future aerodynamic parameter identification as well as the reliability of the method. The properties considered in this paper cover only a part of possible wing properties and were determined by the maneuver “Linear Power”, which features automatic line length control between power and steering lines, combined with a manual control of the length of the steering lines. The maneuver has been executed within 4.5 seconds. This timespan was chosen on the assumption that the kite is in static equilibrium at all times of the maneuver, which has to be investigated in further systematic tests. Moreover, in order to increase reproducibility and perform aerodynamic parameter identifications, it is necessary to implement and automate more sophisticated maneuvers. However, it is now feasible to perform aerodynamic parameter identification, because of recording the steering inputs and to be able to fully automate maneuvers in future. Furthermore, the developed test bench can be used to compare simulation models with measurement data. Starting from a uniform wing position, for example at the zenith position, it is possible to execute automated control inputs over a certain period of time. In order to keep the resulting error as low as possible, this maneuver has to be measured several times. The control inputs and airflow velocity can be used as input values for the simulation. The calculated positions and forces can be compared with the measurement results in terms of their temporal progression and size range in order to obtain new findings

~~for simulation improvement.~~ evaluation of existing simulation models. A further accuracy increase can be achieved by adding sensors to the wing measuring directly the flight state and the relative flow.

Code availability. The code and measurement data can be made available in the framework of a cooperation agreement. If interested please contact the corresponding author.

5 *Competing interests.* The authors declare that they have no conflict of interest.

Acknowledgements. Roland Schmehl has received funding from the European Union’s Horizon 2020 research and innovation programme under the Marie Skłodowska-Curie grant agreement No. 642682 for the ITN project AWESCO and the grant agreement No. 691173 for the “Fast Track to Innovation” project REACH.

References

- Akdağ, S. A., Güler, Ö., and Yağci, E.: Wind speed extrapolation methods and their effect on energy generation estimation, in: *Renewable Energy Research and Applications (ICRERA)*, <https://doi.org/10.1109/ICRERA.2013.6749793>, 2013.
- Archer, C. L.: An Introduction to Meteorology for Airborne Wind Energy, in: *Airborne Wind Energy*, edited by Ahrens, U., Diehl, M., and Schmehl, R., *Green energy and technology*, chap. 5, pp. 81–94, Springer, Berlin Heidelberg, https://doi.org/10.1007/978-3-642-39965-7_5, 2013.
- Bosch, A., Schmehl, R., Tiso, P., and Rixen, D.: Dynamic nonlinear aeroelastic model of a kite for power generation, *Journal of Guidance, Control and Dynamics*, 37, 1426–1436, <https://doi.org/10.2514/1.G000545>, 2014.
- Bosman, R., Reid, V., Vlasblom, M., and Smeets, P.: Airborne Wind Energy Tethers with High-Modulus Polyethylene Fibers, in: *Airborne Wind Energy*, edited by Ahrens, U., Diehl, M., and Schmehl, R., *Green Energy and Technology*, chap. 33, pp. 563–585, Springer, Berlin Heidelberg, https://doi.org/10.1007/978-3-642-39965-7_33, 2013.
- 10 Breukels, J.: *An Engineering Methodology for Kite Design*, Ph.D. thesis, Delft University of Technology, <http://resolver.tudelft.nl/uuid:cdece38a-1f13-47cc-b277-ed64fdda7cdf>, 2011.
- Breukels, J., Schmehl, R., and Ockels, W.: Aeroelastic Simulation of Flexible Membrane Wings based on Multibody System Dynamics, in: *Airborne Wind Energy*, edited by Ahrens, U., Diehl, M., and Schmehl, R., *Green Energy and Technology*, chap. 16, pp. 287–305, Springer, Berlin Heidelberg, https://doi.org/10.1007/978-3-642-39965-7_16, 2013.
- 15 Bungart, M.: *Fluid-Struktur Kopplung an einem RAM-Air-Kiteschirm*, Master's thesis, University of Stuttgart, 2009.
- Costa, D.: *Experimental Investigation of Aerodynamic and Structural Properties of a Kite*, Master's thesis, ETH Zurich, 2011.
- Dadd, G. M., Hudson, D. A., and Sheno, R. A.: Comparison of two kite force models with experiment, *Journal of Aircraft*, 47, 212–224, <https://doi.org/10.2514/1.44738>, 2010.
- 20 de Groot, S. G. C., Breukels, J., Schmehl, R., and Ockels, W. J.: Modelling Kite Flight Dynamics Using a Multibody Reduction Approach, *Journal of Guidance, Control and Dynamics*, 34, 1671–1682, <https://doi.org/10.2514/1.52686>, <http://dx.doi.org/10.2514/1.52686>, 2011.
- de Wachter, A.: *Deformation and Aerodynamic Performance of a Ram-Air Wing*, Master's thesis, Delft University of Technology, <http://resolver.tudelft.nl/uuid:786e3395-4590-4755-829f-51283a8df3d2>, 2008.
- 25 Dunker, S.: Ram-Air Wing Design Considerations for Airborne Wind Energy, in: *Airborne Wind Energy*, edited by Ahrens, U., Diehl, M., and Schmehl, R., *Green Energy and Technology*, chap. 31, pp. 517–546, Springer, Berlin Heidelberg, https://doi.org/10.1007/978-3-642-39965-7_31, 2013.
- Dunker, S.: Tether and Bridle Line Drag in Airborne Wind Energy Applications, in: *Airborne Wind Energy – Advances in Technology Development and Research*, edited by Schmehl, R., *Green Energy and Technology*, chap. 2, pp. 29–56, Springer, Singapore, https://doi.org/10.1007/978-981-10-1947-0_2, 2018.
- 30 Erhard, M. and Strauch, H.: Theory and Experimental Validation of a Simple Comprehensible Model of Tethered Kite Dynamics Used for Controller Design, in: *Airborne Wind Energy*, edited by Ahrens, U., Diehl, M., and Schmehl, R., *Green Energy and Technology*, chap. 8, pp. 141–165, Springer, Berlin Heidelberg, https://doi.org/10.1007/978-3-642-39965-7_8, 2013a.
- Erhard, M. and Strauch, H.: Control of Towing Kites for Seagoing Vessels, *IEEE Transactions on Control Systems Technology*, 21, 1629–1640, <https://doi.org/10.1109/TCST.2012.2221093>, 2013b.
- 35 Fagiano, L. and Marks, T.: Design of a Small-Scale Prototype for Research in Airborne Wind Energy, *IEEE/ASME Transactions on Mechatronics*, 20, 166–177, <https://doi.org/10.1109/TMECH.2014.2322761>, 2015.

- Fagiano, L., Zraggen, A. U., Morari, M., and Khammash, M.: Automatic crosswind flight of tethered wings for airborne wind energy: modeling, control design and experimental results, *IEEE Transactions on Control System Technology*, 22, 1433–1447, <https://doi.org/10.1109/TCST.2013.2279592>, 2014.
- 5 Fechner, U. and Schmehl, R.: Flight Path Planning in a Turbulent Wind Environment, in: *Airborne Wind Energy – Advances in Technology Development and Research*, edited by Schmehl, R., *Green Energy and Technology*, chap. 15, pp. 361–390, Springer, Singapore, https://doi.org/10.1007/978-981-10-1947-0_15, 2018.
- Fechner, U., van der Vlugt, R., Schreuder, E., and Schmehl, R.: Dynamic Model of a Pumping Kite Power System, *Renewable Energy*, 83, 705–716, <https://doi.org/10.1016/j.renene.2015.04.028>, 2015.
- 10 Ghita, M. R., Andrei, H., and Marin, O. F.: Modeling of wind resource to the turbine hub height, in: *Proceedings of the International Conference on Electronics, Computers and Artificial Intelligence (ECAI)*, pp. 1–6, IEEE, Pitesti, Romania, <https://doi.org/10.1109/ECAI.2013.6636175>, 2013.
- Gohl, F. and Luchsinger, R. H.: Simulation Based Wing Design for Kite Power, in: *Airborne Wind Energy*, edited by Ahrens, U., Diehl, M., and Schmehl, R., *Green Energy and Technology*, chap. 18, pp. 325–338, Springer, Berlin Heidelberg, https://doi.org/10.1007/978-3-642-39965-7_18, 2013.
- 15 Hummel, J.: *Automatisierte Vermessung und Charakterisierung der dynamischen Eigenschaften seilgebundener, vollflexibler Tragflächen*, Dissertation, Technische Universität Berlin, Berlin, <https://doi.org/10.14279/depositonce-5863>, 2017.
- Hummel, J. and Göhlich, D.: Automatic Measurement and Characterization of the Dynamic Properties of Tethered Flexible Wings, in: *Book of Abstracts of the International Airborne Wind Energy Conference 2017*, edited by Diehl, M., Leuthold, R., and Schmehl, R., pp. 126–127, University of Freiburg & Delft University of Technology, Freiburg, Germany, <http://resolver.tudelft.nl/uuid:89050243-6bc6-4e25-88f1-dcf4f6145bfe>, 2017.
- 20 Jehle, C. and Schmehl, R.: Applied Tracking Control for Kite Power Systems, *Journal of Guidance, Control, and Dynamics*, 37, 1211–1222, <https://doi.org/10.2514/1.62380>, 2014.
- Johari, H., Yakimenko, O., and Jann, T.: Aerodynamic Characterization of Parafoils, in: *Precision Aerial Delivery Systems: Modeling, Dynamics, and Control*, edited by Yakimenko, O. A., *Progress in Astronautics and Aeronautics*, chap. 4, pp. 199–261, American Institute of Aeronautics and Astronautics, Inc., <https://doi.org/10.2514/5.9781624101960.0199.0262>, 2014.
- 25 Leuthold, R. C.: *Multiple-Wake Vortex Lattice Method for Membrane Wing Kites*, Master’s thesis, Delft University of Technology, <http://resolver.tudelft.nl/uuid:4c2f34c2-d465-491a-aa64-d991978fedf4>, 2015.
- Mulder, J. A., Sridhar, J. K., and Breeman, J. H.: Identification of Dynamic Systems: Applications to Aircraft, Part 2, *Nonlinear Analysis and Manoeuvre Design*, vol. 3 of *RTO AGARDograph 300: Flight Test Technique Series*, Advisory Group for Aerospace Research and Development (AGARD), Neuilly sur Seine, <https://www.sto.nato.int/publications/AGARD/AGARD-AG-300-3-II/AGARDAG300.pdf>, 1994.
- 30 Schmehl, R., ed.: *Airborne Wind Energy – Advances in Technology Development and Research*, *Green Energy and Technology*, Springer Nature, Singapore, <https://doi.org/10.1007/978-981-10-1947-0>, 2018.
- Schmehl, R., Noom, M., and van der Vlugt, R.: Traction Power Generation with Tethered Wings, in: *Airborne Wind Energy*, edited by Ahrens, U., Diehl, M., and Schmehl, R., *Green Energy and Technology*, chap. 2, pp. 23–45, Springer, Berlin Heidelberg, https://doi.org/10.1007/978-3-642-39965-7_2, 2013.
- 35 Stevenson, J., Alexander, K., and Lynn, P.: Kite performance testing by flying in a circle, *The Aeronautical Journal*, 109, 269–276, <https://doi.org/10.1017/S0001924000000725>, 2005.

- Stevenson, J. C.: Traction Kite Testing and Aerodynamics, Phd thesis, University of Canterbury, <http://hdl.handle.net/10092/7688>, 2003.
- Tauber, M. and Moroder, P.: Kite Surfing and Snow Kiting, in: Adventure and Extreme Sports Injuries: Epidemiology, Treatment, Rehabilitation and Prevention, edited by Mei-Dan, O. and Carmont, M. R., chap. 8, pp. 173–187, Springer, London, https://doi.org/10.1007/978-1-4471-4363-5_8, 2013.
- 5 van der Vlugt, R.: Aero- and Hydrodynamic Performance Analysis of a Speed Kiteboarder, Master’s thesis, Delft University of Technology, <http://resolver.tudelft.nl/uuid:9e0c7a62-149c-4fab-8d27-afe15c1a8795>, 2010.
- van der Vlugt, R., Peschel, J., and Schmehl, R.: Design and Experimental Characterization of a Pumping Kite Power System, in: Airborne Wind Energy, edited by Ahrens, U., Diehl, M., and Schmehl, R., Green Energy and Technology, chap. 23, pp. 403–425, Springer, Berlin Heidelberg, https://doi.org/10.1007/978-3-642-39965-7_23, 2013.
- 10 van Reijen, M.: The Turning of Kites: A Quantification of Known Theories, Master’s thesis, Delft University of Technology, <http://resolver.tudelft.nl/uuid:5836c754-68d3-477a-be32-8e1878f85eac>, 2018.
- Wood, T. A., Hesse, H., and Smith, R. S.: Predictive Control of Autonomous Kites in Tow Test Experiments, IEEE Control Systems Letters, 1, 110–115, <https://doi.org/10.1109/LCSYS.2017.2708984>, 2017.