

# Replies to referees

Nikola Vasiljević

## 1 Referee 1

### General comments

In the manuscript by Vasiljevic et al. a software library is presented which allows campaign planning for wind farm site and yield assessment with Doppler wind lidar measurements. The authors have revised the manuscript and put more emphasize on  
5 describing the algorithms that were developed to optimize lidar location and scanning trajectories. This makes the manuscript more suitable for a scientific journal such as Wind Energy Science. There are some points that should still be improved before publication in my opinion:

- The authors have changed the structure and content of Sections 2 and 3 in what I think is a good way. They did however  
10 not transfer these changes into the introduction, discussion and conclusion sections. Only very few changes have been made in these sections.
- In the discussion and conclusion I would expect some kind of an evaluation of how much the algorithms can improve availability of measurement points compared to a non-optimized set-up, or mast measurements. Some prediction or estimation of the improvement in wind resource assessment of the case studies would be even more valuable.
- For the trajectory planning, some variants of trajectories are shown in Section 2, but it is not evaluated how large the gain  
15 in measurement speed is. This could for example be done for the example sites in Section 3 and discussed in Section 4. Possibly, this would also allow some conclusions under which conditions the CPT is most valuable.
- The conclusion section still has the character of an advertisement for a software tool, which is not appropriate for a scientific journal.

*Dear Referee,*

20 *We would like to thank you for your time and for your insightful comments which were used to revise and improve our manuscript. We made several important changes to our manuscript which addresses issues raised in your second review of our paper. We would like to point out that our paper is now primarily focused on the workflow, methodology and algorithms and not on the software. Nevertheless, in mean time between the first and second revision we have publicly released the Python package which represents the digital version of the presented workflow. Furthermore, all results presented in the reviewed pa-*  
25 *per are fully reproducible since scripts that were used to produce them are now publicly available as a supplementary material. Find our detailed responses below which are provided in the italic text formatting.*

The authors have changed the structure and content of Sections 2 and 3 in what I think is a good way. They did however not transfer these changes into the introduction, discussion and conclusion sections. Only very few changes have been made in these sections.

5 *We have revised the three sections that the referee refers to. Section 1 now provides a better introduction to the challenges that the paper is addressing. Similarly, Section 4 and 5 have an improved discussion and conclusion of the solutions that the paper provides.*

10 In the discussion and conclusion I would expect some kind of an evaluation of how much the algorithms can improve availability of measurement points compared to a non-optimized set-up, or mast measurements. Some prediction or estimation of the improvement in wind resource assessment of the case studies would be even more valuable.

*Section 3 now contains estimation of the AEP uncertainty using Clerc et al.(2012) model for a centrally located mast and multi-point WindScanner measurements. The discussion of these results are presented in Section 4.*

15 For the trajectory planning, some variants of trajectories are shown in Section 2, but it is not evaluated how large the gain in measurement speed is. This could for example be done for the example sites in Section 3 and discussed in Section 4. Possibly, this would also allow some conclusions under which conditions the CPT is most valuable.

20 *In the revised manuscript Section 3 provides calculation of how much the trajectory timing is improved using the presented workflow and software tool in comparison to manual approach. Then again, these results are discussed in Section 4 and concluded in Section 5. In our opinion one should always run the optimization of trajectory since this process does not take much time and it guarantees an improved measurement rate.*

The conclusion section still has the character of an advertisement for a software tool, which is not appropriate for a scientific journal.

25 *The revised manuscript contains an improved conclusion which is more in accordance to the style of classical scientific journals. There is no mentioning of the software package in the conclusion, except indications about the digitalized version of the workflow.*

## **2 Referee 3: Ines Wuerth**

### **General comments**

30 Dear Nikola, Andrea, Andreas and Rozenn, Your manuscript “Digitalization of scanning lidar measurement campaign planning” tackles an important topic and the paper and the corresponding open source tool are a very valuable contribution to the lidar community. Scanning lidar campaign planning is tricky and (as you also point out) requires expert knowledge. I see your CPT as a contribution to a lidar community toolbox that digitalizes knowledge from a few lidar expert heads and thus will

lower the hurdle for inexperienced end users to apply scanning lidars for resource assessment. Plus it enables experts to work together on a common platform to further improve how we use our lidars. Reading the comments of the reviewers of your first manuscript version, the main concern was that it reads more like a manual to the tool and does not explain the scientific content well enough. In the meantime you have revised the paper thoroughly and explained the scientific contribution in more detail. In my opinion your manuscript is now almost ready for publication. Below I suggest some minor revision and technical corrections. Ines

*Dear Ines,*

*We would like to thank you for your time and for your insightful comments which were used to revise and improve our manuscript.*

### **Specific comments**

p.1 l.16 f: Your last sentence of the abstract is a bit weak. Why is it only important whether the site can be covered by one system or not? I suggest adding a sentence that goes more like “With minimal effort, the CPT is able to optimize lidar measurement positions and suggest possible lidar installation positions for carrying out a resource assessment campaign. Thus it shows for instance instantly whether the whole site can be covered by one system or not”.

*The last sentence has been rewritten according to the referee suggestion.*

p.1 l.19 f Introduction: Nikola, it would be nice to have a reference here to your paper “Perdigao 2015: methodology for atmospheric multi-Doppler lidar experiments”. Which steps of your campaign planning methodology are you covering with the CPT?

*The introduction now clearly states that the workflow addresses ‘experiment layout design’ and ‘scanning modes design’ steps of the Perdigao-2015 methodology.*

p.3 l.21 f: Please include the sentence “We assume that the wind farm site has been selected and that a preliminary resource assessment and wind farm layout have been made prior to the campaign planning.” again. This was necessary information.

*The manuscript has been updated accordingly.*

You could structure the sections describing the phases of the CPT better: 1) What are the challenges that occur when planning a lidar campaign in that phase? 2) What are the solutions that you found and that the CPT is offering? 3) How is it implemented in the tool? Most sections you start with 2) or 3). p.3.l.21ff: E.g. for phase 1 you start the section by saying “The wind farm layout is a required input for the campaign planning workflow”. Instead you could start with “When planning a lidar measurement campaign, the first challenge is to determine where the lidar should measure. For a wind resource assessment campaign for a future wind farm, the goal is to measure wind speed and –direction at hub height of the turbines. In the CPT we assume that the wind farm site has been selected and that a preliminary resource assessment and wind farm layout have been made prior

to the campaign planning. Thus the wind farm layout is a required input for the campaign planning workflow.” Then continue explaining (as you did) that in the best case you measure at every turbine, but the number of measurement points is restricted and you need to find a solution when you have too many turbines and so on.

5 *We followed the suggestion by the reviewer and made the modification of the manuscript such that each phase of the workflow clearly states what challenges it is addressing.*

p.5 l.8 f: add the description of the variable M: “[...] calculate a midpoint M, [...]”

*The manuscript has been revised accordingly.*

10 p.6 l. 29: what does CLC stand for? CORINE Land Cover? Then introduce the abbreviation in l.17.

*It is actually grid\_code and not CLC that we are using. Accordingly we made the modification in our manuscript.*

p.6 l. 39: Is there a reference for the CLC code or did you come up with those numbers yourself? I was wondering if an overview table for the different land cover types was helpful, but this might be overkill and go back to the manual style. But at least a reference where the reader can look up the code would be helpful.

15

*The reference to the web page of the Corine Land Cover dataset is now provided in the manuscript. The look-up table is a part of the CLC dataset (in zip file as an Excel table).*

P.8 Figure 3: To read it, I printed out your paper in black/white and then couldn't differentiate between red/green. Something to keep in mind when choosing colours, as there are also people with red-green blindness.

20

*The figure is changed, and instead of red and green we use grey and white color to highlight cells.*

p. 8 l 10f: A note here would help that the expected range of the lidar is not the maximum range given in the product data sheet. I know you explain it later when you apply the tool, but nevertheless, it's worthwhile mentioning here as well.

25 *The manuscript was revised according to the referee suggestion.*

General question to phase 23: Shouldn't the placement of the lidars also depend on the main wind direction, as we know that LOS measurement directions perpendicular to the wind should be avoided? This might be an additional layer and would require prior information of the wind conditions at the site. Could be something for a future update of the tool.

30 *The current workflow is a wind direction independent due to the demand on the intersecting angle between two laser beams. However, indeed the workflow could be optimized to be direction dependent which would in principle reduce the demand on the intersecting angle.*

p.10 l.20: Explain what theta and phi are

35 *The explanation of the symbols is provided in the revised manuscript.*

p.10 1.21: The set T is not related to the turbine position set T from phase 1 is it? Please explain your variables in this section better as this leads to confusion.

*T is a set of measurement points, which often coincides with turbine hub position.*

5 p.11 1.20: Explain what theta and phi are

*The explanation of the symbols is provided in the revised manuscript.*

p.12 Figure 4: explain that ws stands for wind scanner

*Figure 4 caption states that ws1 and ws2 are names for the two lidars.*

p.13 1.2f: You mention that “current commercial scanning lidars allow only step-stare implementation of complex trajectories”.

10 This is actually not true – our StreamLine scanner can do continuous measurements for arbitrary trajectories. However, the synchronisation of two devices in the continuous mode is very difficult and step-stare makes more sense anyway if you want to measure at a specific point.

*The indicated sentence has been removed and suggestions of the referee incorporated in the revised manuscript.*

P.13 1.5f: Note: for our StreamLine lidar scanner, the maximum acceleration of the elevation motor is actually higher than for  
15 the azimuth motor. This means you should calculate  $T_{move}$  for the elevation and the azimuth motion and then take the higher value to calculate the required time for the movement. You could note in the text on that.

*The revised manuscript now provides suggestions what to do in case when kinematic limits are different among rotational axes of the scanner head.*

p.14 Figure 5: do you need a source reference here to Google? Same for Figure 8 and 12

20 *Indeed. The Figure captions now indicate the source of the aerial images.*

p.14 1.5: How long does it take to generate one measurement campaign layout? Seconds? Minutes? In general I think it would be very interesting to know how long it takes to run the CPT. This would emphasise that it is a very useful tool to get a first quick idea on how to set up the campaign.

25 *It takes about a few minutes to design the campaign mainly due to some manual work an end-user needs to do (choosing the first and second lidar positions). Otherwise, on an average computer it takes between 10 to 40 seconds to run all the processes. The length of the execution is dependent on the wind farm size and number of wind turbines.*

# Digitalization of scanning lidar measurement campaign planning

Nikola Vasiljević<sup>1</sup>, Andreas Bechmann<sup>1</sup>, Andrea Vignaroli<sup>1</sup>, and Rozenn Wagner<sup>1</sup>

<sup>1</sup>Technical University of Denmark - DTU Wind Energy, Frederiksborgvej 399, Building 118-VEA, 4000 Roskilde, Denmark

**Correspondence:** Nikola Vasiljević (niva@dtu.dk)

**Abstract.** By using multiple wind measurements when ~~planing wind farm sites~~ designing wind farms, it is possible to decrease the uncertainty of wind farm energy yield-assessments since the extrapolation distance between measurements and wind turbines locations ~~are is~~ reduced. A WindScanner system consisting of two synchronized scanning lidar potentially represents a cost-effective solution for multi-point measurements, especially in complex terrain. However, the system limitations and limitations imposed by the wind farm site are detrimental to the installation of scanning lidars and the number and location of the measurement ~~positions~~ points. To simplify the process of finding suitable measurement positions and associated installation locations for the WindScanner system, we have devised a campaign planning workflow. The workflow consists of four phases. In the first phase, based on a preliminary wind farm layout, we generate optimum measurement positions using a greedy algorithm and a measurement 'representative radius'. In the second phase, we create several Geographical Information System (GIS) layers ~~of information~~ such as exclusion zones, line-of-sight (LOS) blockage, and lidar range constraint maps. These GIS layers are then used in the third phase to find optimum positions of the WindScanners with respect to the measurement positions considering the WindScanner measurement uncertainty and logistical constraints. In the fourth phase, we optimize and generate a trajectory through the measurement positions by applying the traveling salesman problem (TSP) on these positions. The ~~above-described~~ described workflow has been digitalized into ~~the so-called Campaign Planning Tool (CPT) currently provided as a Python library~~ a Python package named *campaign-planning-tool* which allows users an effective way to plan design measurement campaigns with WindScanner systems. In this study, the CPT Python package has been tested on three different sites characterized by different terrain complexity and wind farm dimensions and layouts. ~~The CPT shows instantly whether the whole site can be covered by one system or not.~~

With minimal efforts, the Python package can optimize measurement positions and suggest possible lidar installation locations for carrying out resource assessment campaigns.

*Copyright statement.* CC BY 4.0

## 1 Introduction

The development of a wind farm project begins with an assessment of the wind resources and the energy yield for the planned wind farm. Best practices recommend estimating wind resources based on local wind measurements (MEASNET, 2016).

Measurement campaigns designed for wind resource assessment have historically relied on anemometers and wind vanes mounted on tall meteorological masts ~~with the goal~~ to measure a wind climate similar to the wind climate the wind turbines will experience during their lifetime. The local measurements are used to produce the observed wind climate of the site. To account for the seasonal and inter-annual variations of the wind the observed wind climate is long-term corrected using long-term reference data from a nearby meteorological station, reanalysis data or ~~meso-scale~~ mesoscale models (Carta et al., 2013).  
5 The long-term corrected wind climate is then extrapolated vertically and horizontally, typically using a flow model such as WAsP (Mortensen et al., 2014) to estimate the wind resource at hub height for every wind turbine location.

The single mast approach is affordable but can cause large uncertainties. Specifically, in complex terrain (mountainous and forested areas), the spatial extrapolation becomes challenging as the topography can significantly influence the flow. The ideal  
10 scenario would be to measure the local wind climate at every planned wind turbine position. However, erecting as many masts as wind turbines would be extremely costly and in some areas impossible.

Many large wind farm projects in complex terrain are developed using multiple masts. Combining one fixed mast and one or several roaming profiling lidars moved to different positions during the campaign is another option. The advantage of roaming vertical profiling lidars lies in their ability to provide affordable high altitude measurements, ease of deployment and absence  
15 of building-permits in comparison to the masts, while data availability and inaccuracy in complex terrain (Bingöl et al., 2009) are some of their disadvantages. However, any roaming setup brings a trade-off between the number of measurement positions and the measurement duration at each location since short measurements (e.g. of 3 months) can lead to erroneous wind climate (Langreder and Mercan, 2016).

A potential solution for multi-point measurements for wind resource assessment lies in the application of scanning lidars  
20 (Krishnamurthy et al., 2013). With a measurement range of several kilometers and a beam that can be oriented freely in any direction (Vasiljevic et al., 2016), many measurement positions can be reached without moving the hardware. Especially dual-Doppler setups (i.e., two scanning lidars) can provide accurate retrieval of horizontal wind speed and wind direction (i.e., two dimensional (2D) wind vector) at many possible positions (Vasiljević et al., 2017). While scanning lidars provide a broad range of benefits, there are also clear challenges when designing multi-lidar measurement campaigns.

~~Constraints which~~ The biggest challenge when designing a multi-lidar measurement campaign is deciding where to measure and then how to position scanning lidars to acquire accurate measurements. As mentioned before, we would like to measure at every future wind turbine location. Realistically, if a number of wind turbines is large, this is not feasible since we would not have enough measurement samples per each location to do a proper statistical analysis of measurements since the laser beams have to traverse through each measurement point. A good rule of thumb is to have at least 10 samples for each measurement point per 10 minute period. Therefore, we would need an approach to minimize the number of measurement points such that we would acquire enough samples per measurement point while limiting a need for spatial extrapolation of measurements using flow models.  
25  
30

Afterward, constraints that arise from scanning lidars, atmosphere and site characteristics dictate the ~~design process mentioned above~~ positioning of lidars. Indeed, the laser beam of scanning lidars can be steered freely, but on the other hand, it can be  
35 blocked in some directions by the terrain, vegetation or other obstacles (~~e.g., power lines~~). This impacts the ~~positioning of~~

~~scanning lidars~~ lidar positioning since we need an unobstructed passage of the laser beams towards measurement points, i.e. clear ~~line-of-sights~~ line-of-sight (LOS). On the other hand, the lidar characteristics (e.g., laser wavelength and output power) in combination with the atmosphere characteristics (e.g., aerosol extinction, backscatter coefficient, and atmospheric attenuation) impact the maximum expected range of the lidar. Furthermore, retrieving the 2D wind vector requires a limited beam elevation angle (e.g., smaller than  $5^\circ$  suggested by Vasiljević et al. (2017)) to avoid contamination of horizontal wind components with the vertical component, ~~finally~~. Finally, the intersecting angle of the laser beams at the measurement points should be large enough (e.g., bigger than  $30^\circ$  suggested by Vasiljevic and Courtney (2017)) to ~~minimise~~ minimize the lidar measurement uncertainty (Davies-Jones, 1979; Stawiarski et al., 2013). Once the lidar positions are set and measurement points determined, generating an optimized trajectory is essential to reduce the motion time from one measurement point to another and thus boost a number of measurement samples per measurement point. Overall, a campaign ~~planner~~ designer has to handle several constraints at the same time to find the best measurement locations and in accordance with them generate the best possible measurement campaign layout or decide that a measurement campaign with scanning lidars is not practical.

In this paper, we describe a workflow ~~and resulting digital tool (named Campaign Planning Tool, CPT) which tackle~~ which tackles the above-described challenges involved in the planning of scanning lidar campaigns together with an approach of the workflow digitalization. The workflow is based on the application of the methodology for multi-lidar experiments on wind resource assessment campaigns (Vasiljević et al., 2017), which was previously used in planning of ~~more than 20 measurement campaigns (Vasiljevic, 2018) and especially those measurement campaigns~~ conveyed in the New European Wind Atlas (NEWA) project (Mann et al., 2017), such as Perdigao-2015 (Vasiljević et al., 2017) and Perdigao-2017 (Fernando et al., 2019). ~~On the other hand, the CPT has previously been conceptualized during the WindScanner.eu project (see 'WindScanner locator' in Vasiljevic and Hasager, 2015). The workflow addresses 'experiment layout design' and 'scanning modes design' steps of the above-mentioned methodology (see steps 4 and 5 in Vasiljević et al., 2017).~~

The paper is organized as follows. Section 2 ~~describes the workflow and corresponding elements of CPT, provides a detailed description of the four main phases of the workflow.~~ Additionally, Section 2 provides a recipe for the workflow digitalization. In Section 3 we present results of applying ~~CPT the digitalized workflow~~ for planning campaigns at three sites. ~~We discuss the results and future work~~ wind farm sites different in size, layout and complexity. Results and further development of the workflow are discussed in Section 4, while we provide our concluding remarks in Section 5.

## 2 Methodology

### 2.1 Overview

We assume that the location and the layout of the wind farm are known. These initial information are inputs to the campaign planning workflow which consists of four sequential phases graphically represented in Figure 1. First of all, the measurement positions are optimized based on the wind farm layout. ~~Afterwards~~ Afterward, the measurement positions are used in combination with lidar and site constraints to generate the map that highlights the best lidar installation locations. In the next phase, the positions of the scanning lidars are determined by minimizing a dual-Doppler measurement uncertainty of horizontal wind



speed while identifying existing road and power infrastructure. Finally, considering the measurement positions and positions of scanning lidars the trajectory of the laser beams through all the reachable measurement points is optimized and afterwards ~~afterward~~ generated. In the sections that ~~will~~ follow each phase will be described in ~~details followed by a short summary how the entire workflow has been digitalized and thus converted into the CPT~~detail.

## 5 2.2 Phase 1 - Measurement positions optimization

~~The wind farm layout is a required input for~~ This first phase of the workflow tackles challenges of measurement point optimization. We assume that the wind farm site has been selected and that a preliminary resource assessment and wind farm layout have been made before the campaign planning ~~workflow.~~

For small wind farms (either a limited number of turbines and-or a limited spatial extent) we can coincide the measurement positions with the wind turbine positions. For larger wind farms, the number of measurement points needs to be reduced. However, the reduced set of measurement points should be adequately distributed over the wind farm site to avoid long wind resource extrapolation distances. The simplest approach is to group the wind turbine locations, which are close to each other in clusters, and to assign a single measurement location per cluster. MEASNET (2016) suggests that measurements from a single location represent the wind climate over a certain area described by 'representativeness radius' ( $R_r$ ).  $R_r$  has different values for different terrain types. For example, in complex terrain, the radius should be smaller than 2 km as suggested by MEASNET (2016). By solving a disc covering problem (e.g., Biniat et al., 2017), in which we aim to find a minimum number of discs with a radius equal to  $R_r$  that cover all locations of wind turbines, we cluster the wind turbines and optimize the measurement locations. As stated in Ghasemalizadeh and Razzazi (2012) there are several ways in solving the disc covering problem. One of them is a greedy approach ~~which that~~ we adapted to ~~suite suit~~ our purpose.

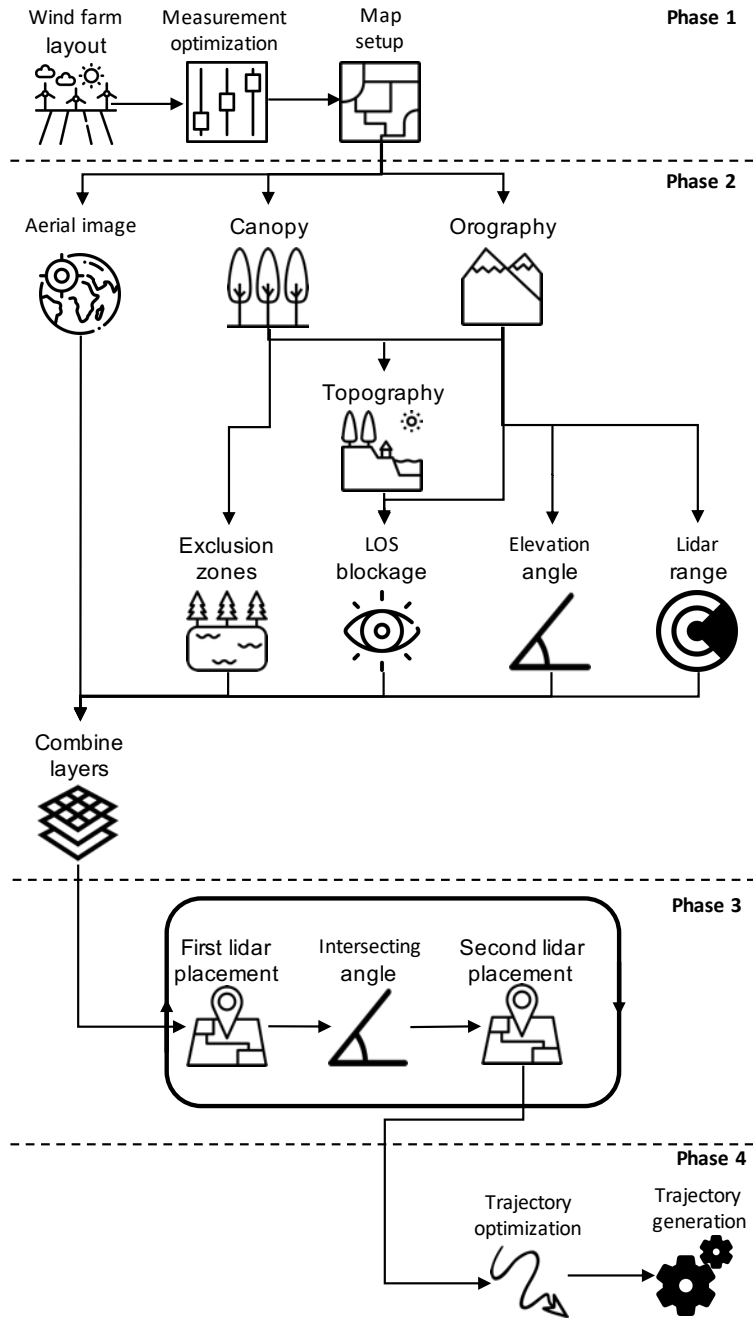
In our case, the greedy algorithm implementation yields the set  $D$  of  $m$  unique disks with the radius  $R_r$  covering the set  $T$  of  $n$  wind turbine positions ( $T = \{ T_1, T_2, \dots, T_n \}$ ). We are solving the disc covering problem in two dimensions (2D) by omitting height coordinate (i.e.,  $z$ ) of turbine positions. The greedy algorithm implementation can be described in the algorithmic sense with the following steps:

1. Initialize the set  $D$  ( $D = \emptyset$ )
- 25 2. For any unique pair of wind turbine positions (there is  $p = \frac{n!}{2(n-2)!}$  unique pairs) calculate a midpoint  $M_i$ , which is considered as a potential disc center and add it to the set  $M = \{ M_1, M_2, \dots, M_p \}$
3. Find the elements of the set  $T$  that are covered by each element of the set  $M$  and form an additional set  $S$  which will contain these information. To do this, calculate the distance between each element of the two sets:

$$d_{i,j} = \|M_i - T_j\| = \sqrt{(x_{M_i} - x_{T_j})^2 + (y_{M_i} - y_{T_j})^2}$$

$$i = 1, \dots, p \quad \wedge \quad j = 1, \dots, n \tag{1}$$

30 where  $x_m$ ,  $y_m$ ,  $x_t$  and  $y_t$  are coordinates of disc centers and turbine positions, and compare  $d_{i,j}$  to  $R_r$  ( $d_{i,j} \leq R_r$  condition must be satisfied for a disc  $M_i$  to cover a point  $T_j$ ). Through the comparisons the set  $S$  is formed. The



**Figure 1.** Campaign planning workflow (figure designed using freepik.com icon database).

elements of  $S$  are actually sets themselves containing wind turbine positions covered by each disc from the set  $M$ . If for example, a disc  $M_k$  covers turbine positions  $T_1, T_2$  and  $T_n$  (i.e.,  $d_{k,1}, d_{k,2}$  and  $d_{k,n}$  are smaller or equal to  $R_r$ ) the corresponding element of the set  $S$ , that is  $S_k$  will contain these elements (i.e.,  $S_k = \{ T_1, T_2 \text{ and } T_n \}$ ). Alternatively, if a disc  $M_k$  does not cover any turbine position the corresponding element of the set  $S$  will be an empty set (i.e.,  $S_k = \emptyset$ ).

5 4. Select a disc from the set  $M$  which covers the maximum number of points of the set  $T$  (this process is aided using the set  $S$ ). Let this disc be  $M_i$ .

5. The disc  $M_i$  is added to  $D$  and removed from  $M$ :

$$D = D \cup M_i \quad (2)$$

$$M = M \cap M_i \quad (3)$$

10  $S = S \cap S_i \quad (4)$

6. Points covered by  $M_i$  provided in  $S_i$  are removed from the set  $T$  and from any subset of the set  $S$ :

$$T = T \cap S_i \quad (5)$$

$$\forall S_j \in S, \quad S_j = S_j \cap S_i \quad (6)$$

7. Steps 1 to 6 are repeated until either the set  $T$  or  $S$  are empty :

15  $T = \emptyset \quad \vee \quad S = \emptyset \quad (7)$

8. If  $T$  is not an empty set after Step 7, then the remaining elements are added to the set  $D$  :

$$D = D \cup T \quad (8)$$

At the end of this process elements of the set  $D$ , that is measurement points, contain only  $x$  and  $y$  coordinates. Using the digital elevation model (DEM) from the Shuttle Radar Topography Mission (SRTM, Farr et al. (2007)) we can [attach-introduce](#) the height information to the elements of the set  $D$ . It is important to additionally add the hub height of future wind turbines to [these-this](#) height information. As the last step of the first phase, we generate a mesh of equally spaced points over the site with the measurement point in the mesh center (see Figure 2). Lets denote the mesh as  $G$  and treat it as a set of elements  $G_{i,j}$  ( $G_{i,j} = \{ x_i, y_j \}$ , where  $i=j=1, \dots, l$ ). The mesh resolution should be equal to the land cover and terrain data resolution which will be used in the second phase (typically  $|x_2 - x_1| = |y_2 - y_1| = 100$  m). This avoids any interpolation of the land cover or topography datasets to our mesh.

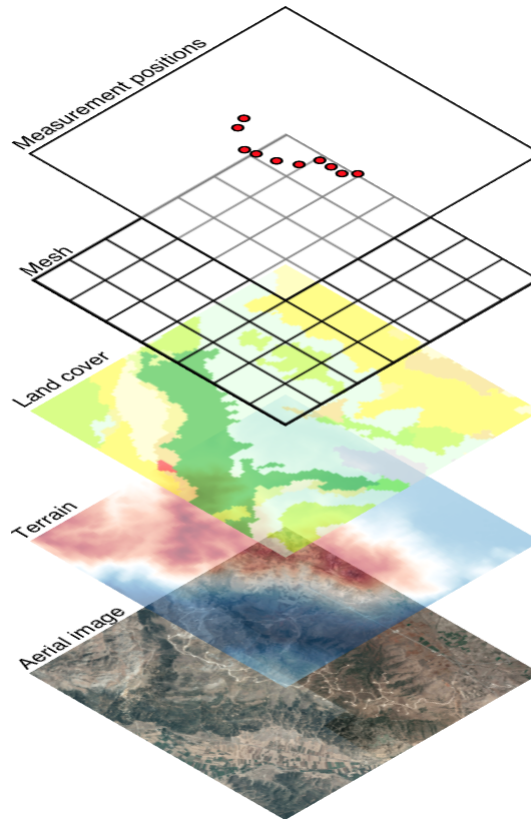
25

### 2.3 Phase 2 - Highlighting best lidar installation locations

In this phase, we will create a Geographical Information System (GIS) layer which includes site and lidar constraints while highlighting the best lidar installation locations [considering the previously determined measurement points](#). We will denote

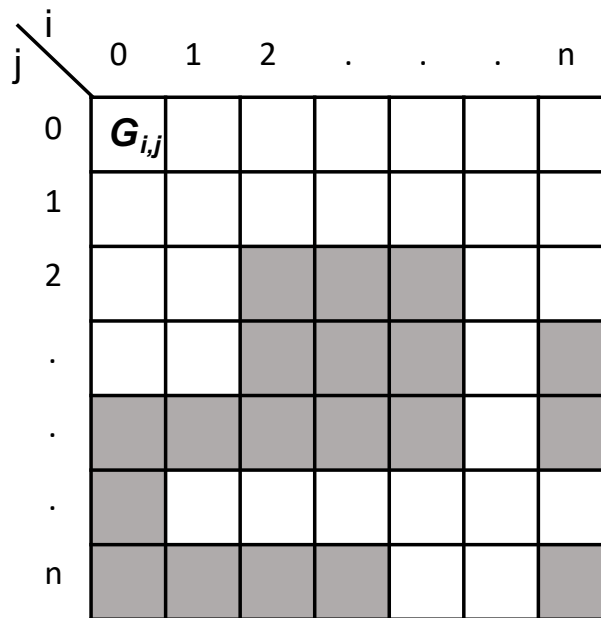
this GIS layer as the combined layer and treat it as a set  $Cl$  containing elements  $Cl_{i,j}$ . To create this layer, first we acquire land cover data, orthography data and aerial image corresponding to the extent of the previously generated mesh (Figure 2). For land cover data we can use [the CORINE Land Cover dataset](#). In [the](#) case of the orography, the previously mentioned SRTM DEM datasets [serves-serve](#) this purpose, while for the aerial image we can use the Google map server. All three data sources are publicly available. The acquired stack of data will be a base material for the combined layer creation.

At present we consider 5 types of constraints which are detrimental for a lidar installation: zones where a lidar cannot be installed (e.g., lakes, forests, etc.); topographical features that can block the beam; keeping the lidar elevation angle below a certain threshold to avoid measurement contamination with the vertical component of the wind; the maximum lidar range; practical matters such as access roads. To create the combined layer which contains all the above-listed constraints, first we will generate GIS layers for each [individual constraint and afterwards constraint and afterward](#) merge them. These individual GIS layers are: (1) Exclusion zones layer, (2) LOS blockage layer, (3) Elevation angle layer, (4) Lidar range layer and (5) Logistical layer.



**Figure 2.** A stack of data used to generate the GIS layer for lidar placement: (1) measurement positions generated by solving disc covering problem, (2) mesh covering wind farm site, (3) land cover data sourced from CORINE Land Cover database, (4) terrain data sourced from SRTM DEM database and (5) aerial image sourced from the Google Map server.

To create the exclusion zone layer we will use the land cover data and according to the land cover type (e.g., water surface, forest, etc.) classify areas of the site as suitable or not for a lidar installation. The land cover data can be treated as a set  $L_c$  of equally spaced elements  $L_{c_{i,j}}$  containing integer values which represent the so-called  $CLC$  codes that indicate grid code that indicates the land cover type (e.g., water bodies have  $CLC$ -grid code code from 40 to 44). A look-up table for grid code comes together with the land cover data when downloaded from the CORINE land cover web site (<https://land.copernicus.eu/pan-european/corine-land-cover/>). To generate the exclusion zone layer we make a copy of the mesh (an empty mesh), walk through the mesh (going from one mesh point to another), fetch the corresponding information on land cover type from the land cover dataset, check the type and assign value of 1 or 0 to the mesh point if the land cover type allows lidar installation or not (e.g.,  $G_{i,j} = \{ x_i, y_i, 1 \}$  if  $CLC$ -grid code code is equal to 12 that is 'Arable-arable land'). An example of a fictive exclusion zone layer is shown in Figure 3.



**Figure 3.** Fictive exclusion zone layer represented as an array:  $G_{i,j}$  denotes one mesh point, red-white and green-grey squares indicate bad ( $G_{i,j} = 0$ ) and good ( $G_{i,j} = 1$ ) locations for a lidar installation respectively,  $i$  corresponds to  $x$  coordinate or Easting and  $j$  corresponds to  $y$  coordinate or Northing.

To generate the LOS blockage layer we need to create dataset contain the summed height of the terrain and canopy. To do this we will add 20 m at each location in the DEM dataset where the CORINE Land Cover dataset contains code which correspond corresponds to the forest ( $CLC$ -grid code code equal to 23, 24 and 25). Afterwards, we make a copy of the mesh, walk through the mesh, fetch the corresponding elevation from the DEM dataset, perform a viewshed analysis (Izraelévitz, 2003) from the selected mesh point to each measurement point that returns which measurement points are visible, and assign the visible measurement points to the mesh point (e.g., if measurement points  $D_1, D_2$  and  $D_n$  are visible from  $G_{i,j}$  then  $G_{i,j}$

$=\{x_i, y_i, D_1, D_2, D_n\}$  ). In the viewshed analysis for the selected mesh point, we are only taking the corresponding height from the DEM dataset (since we consider that a lidar will be installed on the ground), while for the points in between the mesh and measurement points we are considering the summed height dataset. The result of this process is the LOS blockage layer which mesh points contain a set of measurement points to which there is an unobstructed LOS.

- 5 ~~As mentioned, our~~ Our focus is to design a dual-Doppler measurement campaign ~~in order~~ to retrieve the horizontal wind speed. Accordingly, a low elevation beam angle is required to avoid contamination of the LOS speed measurement with the vertical component of the wind vector. We create the elevation angle layer to serve this purpose. This layer is created through following steps: we make a copy of the mesh, walk through each mesh point, fetch the height information from the DEM dataset, calculate the elevation angle from the mesh point to each measurement point, compare the calculated angle to a
- 10 threshold value (e.g., a maximum of  $5^\circ$  suggested by Vasiljević et al. (2017)), and assign measurement points to the mesh point for which the elevation angle is below the threshold value.

In the lidar range layer, mesh points contain measurement points ~~which that~~ are within reach of the lidar taking into account the expected range of the lidar for the given site. It is worth noting that the expected range is not the maximum range given in the product data-sheet. The layer is created ~~in a similar fashion like~~ similarly to the previous one.

- 15 To create the combined layer, we will treat the four previously derived layers as sets  $Ez$  (exclusion zone layer),  $Lb$  (LOS blockage layer),  $Ea$  (elevation angle layer) and  $Lr$  (lidar range layer). Since each set is made using the same mesh, each set contains the same number of elements. The combined layer, treated as a set  $Cl$  containing elements  $Cl_{i,j}$ , is derived as following:

$$Cl = \{Cl_{1,1}, Cl_{1,2}, \dots, Cl_{l,l}\} \quad (9)$$

$$20 \quad Cl_{i,j} = \begin{cases} \{x_i, y_j, \{\}\}, & \text{if } Ez_{i,j} = \{x_i, y_i, 0\} \\ Lb_{i,j} \cap Ea_{i,j} \cap Lr_{i,j}, & \text{if } Ez_{i,j} = \{x_i, y_i, 1\} \end{cases} \quad (10)$$

Therefore, the mesh points of the combined layer will contain which and how many measurement points are reachable considering the first four above described constraints.

Finally, the aerial image of the site (the logistical layer) is kept separate, it will serve the important purpose of identifying existing road and power infrastructure.

## 25 2.4 Phase 3 - Placement of the lidars

- The combined layer together with underlying aerial image highlights the 'best' locations for the placement of individual lidars considering all the above-described constraints. However, designing the campaign for a dual-Doppler system, where beams from two lidars need to synchronously cross at every measurement positions, adds one more constraint: that is the limitation on the beams intersection angle. The measurement uncertainty of a dual-Doppler system increases when the intersecting angle
- 30 between the laser beam gets small (see Vasiljevic and Courtney (2017)). Therefore the position of the second lidar is very much determined by the position of the first lidar. Considering that we have chosen the first lidar location using the combined

layer and the logistical layer, now we need to calculate an additional layer to which we will refer as the intersecting angle layer. This layer is created as following: we make a copy of the mesh, walk through each mesh point considering each mesh point as a second lidar position, calculate intersecting angles between the two laser beams at each measurement point, and add those measurement points to the mesh point for which the intersecting angle is bigger than a specific value (e.g., at least 30° suggested by (Davies-Jones, 1979; Vasiljevic and Courtney, 2017)). Lets treat this GIS layer as a set  $Ia$  with elements  $Ia_{i,j}$ . To highlight the best locations for the second lidar installation the intersecting angle layer should be intersected with the combined layer, i.e. :

$$Sl = Cl \cap Ia \quad (11)$$

where  $Sl$  is a set corresponding to the newly created GIS layer for the second lidar placement. The process of selecting a position for the first lidar, followed with the generation of the layer for locating the second lidar and selection of the second lidar position should be performed several times to generate several potentials experiment designs, since only during a field visit it will be possible to determine the most likely design for the measurement campaign. Once the second lidar position is determined, we derive a set of reachable measurement points  $Dr$  by both lidars which is actually a subset of the set  $D$  ( $Dr \in D$ ).

## 15 2.5 Phase 4 - Trajectory optimization and generation

The fourth phase consists of the optimization of the path through the measurement points and to boost the number of measurement samples per measurement point, and as well the generation of the corresponding trajectory.

In the previous phases, we derived the measurement locations and dual-Doppler campaign layout(s). A The next task is to optimize the path through those positions such that the motion of the scanner heads required to steer the beams takes the least amount of time (~~i. e., increasing sampling rate~~). One way to achieve this is to adapt the ~~solution for the~~ traveling salesman problem (TSP) solution. In the regular TSP, the goal is to find the shortest path through a set of  $n$  cities that a traveling salesman needs to visit. There are multiple approaches to solve the TSP (Reinelt, 1994). One of the simplest implementation of the TSP solution is Nearest Neighbor Heuristics (NNH). As stated in (Reinelt, 1994): *This heuristic for constructing a traveling salesman tour is near at hand. The salesman starts ~~at in~~ some city and then visits the city nearest to the starting city. From there he visits the nearest city that was not visited so far, etc., until all cities are visited, and the salesman returns to the start.*

In our case, we have a single set of measurement points  $D_c$  which needs to be simultaneously visited by the two laser beams. Since typically two scanning lidars will not be symmetrically positioned with respect to the measurement points we will have two different sets of steering angles  $D_{s1}$  and  $D_{s2}$  corresponding to the first and second lidar respectively ~~which that~~ enable 'visiting' the measurement points with the laser beams. Therefore, we cannot directly apply the ~~above-described~~ above-described heuristics. The TSP NNH solution needs to be adapted.

Lets consider that the set  $D_c$  is defined as:

$$D_c = \{D_{c,1}, D_{c,2}, \dots, D_{c,n}\}, D_{c,i} = \{x_i, y_i, z_i\} \quad (12)$$

while  $D_{s1}$  and  $D_{s2}$  are defined as:

$$D_{s1} = \{D_{s1,1}, D_{s1,2}, \dots, D_{s1,n}\}, D_{s1,i} = \{\theta_{1,i}, \varphi_{1,i}\} \quad (13)$$

$$D_{s2} = \{D_{s2,1}, D_{s2,2}, \dots, D_{s2,n}\}, D_{s2,i} = \{\theta_{2,i}, \varphi_{2,i}\} \quad (14)$$

5 ~~additionally~~ where  $\theta$  and  $\varphi$  are azimuth and elevation angles respectively. Additionally, we will make a set  $I$  which will ~~contains~~ contain indexes of the sets' elements:

$$I = \{1, 2, \dots, j, \dots, n\} \quad (15)$$

The adapted TSP NNH solution for dual-Doppler trajectory can be described in the algorithmic sense with the following steps:

- 10 1. Initialize empty sets  $T_{l1}$  and  $T_{l2}$  ( $T_{l1} = T_{l2} = \emptyset$ ), which will contain ordered elements of the optimized trajectory ~~(i.e.,~~ the trajectory points).
2. Select an arbitrary index  $j$  from the set  $I$ .
3. Set an element  $l$  to  $j$  ( $l = j$ ).
4. Select elements  $D_{s1,l}$  and  $D_{s2,l}$ .
- 15 5. Add the elements  $D_{s1,l}$  and  $D_{s2,l}$  to the set  $T_{l1}$  and  $T_{l2}$  respectively, and remove index  $j$  and elements  $D_{s1,l}$  and  $D_{s2,l}$  from the set  $I$ ,  $D_{s1}$  and  $D_{s2}$  respectively:

$$T_{l1} = T_{l1} \cup D_{s1,l} \quad (16)$$

$$T_{l2} = T_{l2} \cup D_{s2,l} \quad (17)$$

$$I = I \setminus j \quad (18)$$

20  $D_{s1} = D_{s1} \setminus D_{s1,l} \quad (19)$

$$D_{s2} = D_{s2} \setminus D_{s2,l} \quad (20)$$

6. Calculate sets  $\Delta\alpha_1$  and  $\Delta\alpha_2$  which contains elements  $\Delta\alpha_{1,il}$  and  $\Delta\alpha_{2,il}$  ( $i$  takes values from the set  $I$ ), defined as:

$$\Delta\alpha_{1,il} = \{|\theta_{1,i} - \theta_{1,l}|, |\varphi_{1,i} - \varphi_{1,l}|\} \\ i = 1, 2, \dots, n \quad (21)$$

$$\Delta\alpha_{2,il} = \{|\theta_{2,i} - \theta_{2,l}|, |\varphi_{2,i} - \varphi_{2,l}|\} \\ i = 1, 2, \dots, n \quad (22)$$



that describe relative angular moves for the two lidars from the measurement point described by the last element of the sets  $T_{l1}$  and  $T_{l2}$  (i.e.,  $D_{s1,l}$  and  $D_{s2,l}$  respectively) to all remaining measurement points described by elements of  $D_{s1}$  and  $D_{s2}$ .

7. Form a set  $B$  containing maximum concurring elements of the sets  $\Delta\alpha_1$  and  $\Delta\alpha_2$ :

$$B = \{max(\Delta\alpha_{1,1l}, \Delta\alpha_{2,1l}), max(\Delta\alpha_{1,2l}, \Delta\alpha_{2,2l}), \dots, max(\Delta\alpha_{1,1n}, \Delta\alpha_{2,1n})\} \quad (23)$$

8. Find index  $j$  of an element of the set  $B$  which has lowest value.

9. Repeat steps 3 to 8 until the sets  $D_{s1}$  and  $D_{s2}$  are empty ( $D_{s1}=D_{s2}=\emptyset$ ).

The main ~~modifications~~ modification of a standard TSP NNH solution is the addition of Step 7 which secures that the trajectory will be optimal for both lidars instead of only one. The difference between the standard and adapted TSP NNH solution can be seen from an example shown in Figure 4.

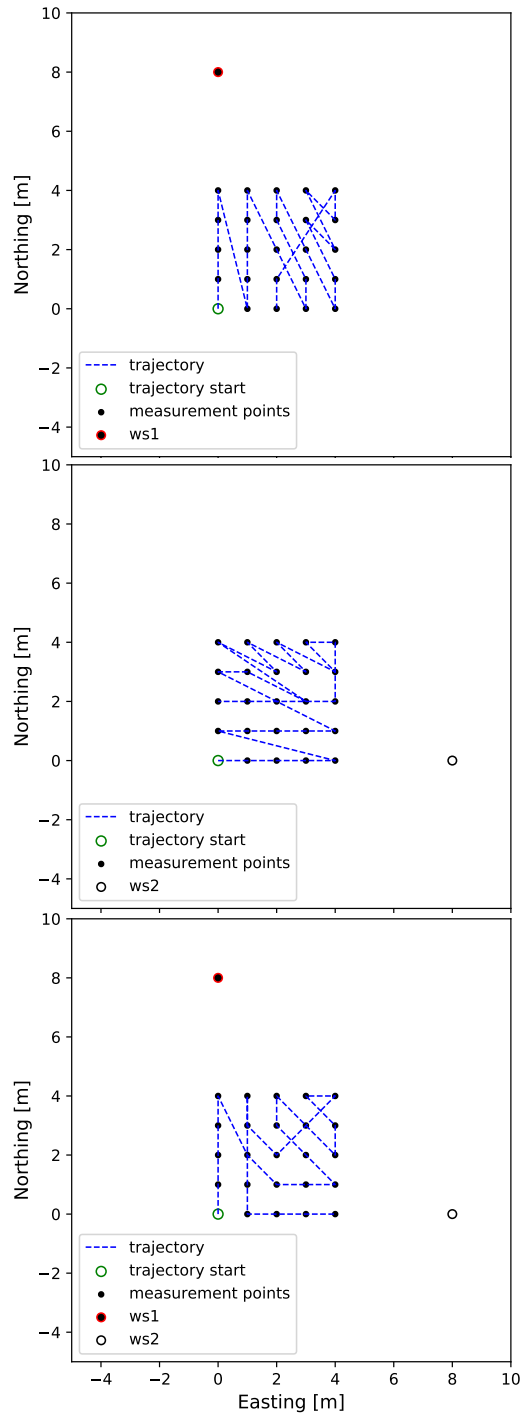
To get the lidars to actually follow the optimized trajectory, we need to describe the motion of the scanners as a function of time. In other words, we need to ~~'attach'~~ add the time component of the trajectory to the spatial description we yielded in the previous steps. When calculating the timing for the trajectory, we assume that the lidars will stop at each measurement point and sample wind speed before they continue to the next measurement points point. Therefore, we expect that lidars will perform so-called step-stare trajectories. There are several reasons for selecting step-stare trajectories instead of continuously scanning the flow through the trajectory described by the measurement points. ~~The most important reason is that the current commercial scanning lidars allow only step-stare implementation of complex trajectories. Also, the~~ Step-stare trajectories are simpler for the implementation and synchronization of multiple-lidars, also the step-stare data processing is less complex comparing to the continuously scanning trajectories.

The timing for the step-stare scans can be calculated using a simple solution for Kinematics Elevator Problem (KEP) (e.g., Al-Sharif, 2014) considering an infinite jerk:

$$T_{move} = 2 * \sqrt{\frac{\Delta\beta}{A_{max}}}$$

$$T_{move} = \begin{cases} 2 * \sqrt{\frac{\Delta\beta}{A_{max}}}, & \text{if } \Delta\beta \leq \frac{V_{max}^2}{A_{max}} \\ \frac{\Delta\beta}{V_{max}} + \frac{V_{max}}{A_{max}}, & \text{otherwise} \end{cases} \quad (24)$$

where  $T_{move}$  is a minimum time required to perform an angular motion  $\Delta\beta$  considering ~~a~~ maximum allowed acceleration  $A_{max}$  and speed  $V_{max}$  of the lidar scanner head  $A_{max}$ .



**Figure 4.** TSP NNH: top image - standard TSP NNH for lidar denoted *ws1*, mid image - standard TSP NNH for lidar denoted *ws2*, bottom image - adapted TSP NNH for two lidars denoted *ws1* and *ws2*.

In case when rotational axes of the scanner head have different kinematic limits, it is advisable to use limits that are more conservative (i.e., lower maximum allowed acceleration and speed).

Since we have two lidars that move ~~to~~ from one to another measurement point, we will generally have two different moving times to perform angular motions. To keep the lidar measurements in sync we take the maximum of the two derived values.

## 5 2.6 ~~Campaign planning tool~~Digitalizing workflow

The previously described workflow has been digitalized ~~resulting in the Campaign Planning Tool (CPT). The CPT is developed in Python in order to be an open source solution which does not require commercial products to be used, improved and further developed. The tool is modular allowing end users to build their own workflows. For example, considering that the installation locations of lidars are predetermined one can recombine modules to find where measurements can be taken followed with the trajectory optimization and generation. At~~ using Python and a set of public Python libraries resulting in a Python package *campaign-planning-tool* (Vasiljevic, 2019). The package has been made public (open source), it is versioned on Github and using Zenodo the code base has been assigned a persistent object identifier (Vasiljevic, 2019). At the time of writing this manuscript, ~~the tool contains 16 modules where each module is depicted as an icon in Figure 1. Currently, a public release of the tool on a dedicated GitHub () is scheduled for the autumn 2019. version 0.1.3 has been released. Using *campaign-planning-tool*~~ end-users can design scanning lidar campaigns, and export results and configuration files for lidars. The whole process roughly takes a couple of minutes.

## 3 Results

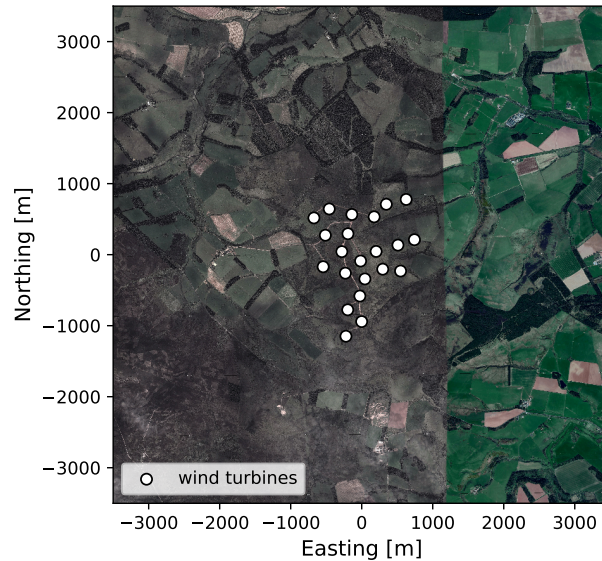
### 3.1 Overview

In this section, the campaign planning workflow is demonstrated through the application of ~~CPT~~ *campaign-planning-tool* on three different wind farm sites, which are named by their country of origin: Scotland (Vasiljevic and Bechmann, 2019b), Italy (Vasiljevic and Bechmann, 2019c) and Turkey (Vasiljevic and Bechmann, 2019d). These three sites were selected since they are characterized by different terrain complexity and wind farm dimensions and layouts.

The only information needed for each site is the wind turbine positions and their hub height. This input could be generated arbitrarily, but to make the examples realistic ~~actual operating the actual operational~~ wind farms have been chosen. For all three sites, we aim to design the campaign for the long-range WindScanner system configured in a dual-Doppler mode (i.e., the system will have two scanning lidars). The system is described in details in Vasiljevic et al. (2016). To demonstrate the workflow, the most essential bits of information is the maximum range of the lidars, which is 6 km, and maximum acceleration and speed of the scanner heads, which ~~is are~~ 100°/s<sup>2</sup> and 50°/s. Results which will be described in the following sections are accessible as a data collection (Vasiljevic and Bechmann, 2019a) or as ~~an~~ individual datasets (Vasiljevic and Bechmann, 2019b, c, d).

### 3.2 Site 1 - Scotland

The Scottish site consists of 22 wind turbines with 47-m hub-heights and has a quite compact layout (Figure 5). The distance between adjacent turbines is about 300 m (5 rotor diameters). The wind farm is placed on a 300-m tall hill surrounded by rolling hills of farmland with windbreaks and patches of forest. The hill is quite steep with maximum slopes of 20% from the main south-western wind direction. The site is located 17 km from the coast ~~and can, therefore,~~ Therefore, it can be considered an inland site.



**Figure 5.** The aerial image of the Scottish site. Aerial data: ©Google Maps, DigitalGlobe.

Due to the compact design of the wind farm, we decided to skip the measurement position optimization and try to generate a measurement campaign in which we intend to measure at every wind turbine position. Considering that the site is relatively close to the coast, surrounded by agricultural land, and the altitude is about 300 m above sea level (asl.), thus relatively low, the site should experience a good concentration of aerosols. Nevertheless, we cannot expect that the WindScanners will have ~~6 km~~ a 6-km range all the time and assume that on average the WindScanners would have a range of at least 3 km at the selected site (i.e., ~~a~~ half of the maximum claimed range). This estimation is based on our experience in doing measurement campaigns at various locations and in different atmospheric conditions.

Using this range together with the map extent, ~~the CPT tool~~ campaign-planning-tool outputs the combined layer (see top image in Figure 6). The dark red color areas show positions from where an individual scanning lidar can reach out to all measurement positions. Those areas are relatively large because the wind farm layout is compact. For ~~the purpose of~~ this example, we chose to place the first WindScanner at the South of the wind farm (coordinates of ~~100~~ 400 m, -1600m and ~~400~~

350 m in Easting, Northing and altitude asl. respectively relative to the map center coordinates of 535662 m, 6183892 m in Easting and Northing, UTM zone ~~30-U~~30U).

As explained in Section 2 (Phase 3), the first lidar placement is instrumental for the second lidar placement because of the intersecting angle between the respective lidars' beams. There is only one area of the map where the placement of the second lidar assures that all measurement points are within reach and measurable with fair accuracy (bottom image in Figure 6). By selecting the position of the second lidar (coordinates of 1600 m, ~~400 m and 318~~ 400 m and 304 m in Easting, Northing and altitude asl. respectively relative to the map center coordinates), we complete the generation of one measurement campaign layout. In practice, we would generate several layouts (for different positions of WindScanner 1 and WindScanner 2), and assess their feasibility by inspecting aerial images, e.g. looking for access roads and nearby power lines or houses. However, for the sake of demonstrating the workflow, we have generated only a single layout.

Since we have both the measurement and lidar positions, we have all the elements to optimize and generate the trajectory. Figure 7 shows the optimum trajectory through the measurement points, resulting from the modified TSP (see Section 2 - Phase 4).

Considering the kinematic limits of the scanner head and that we are performing step-stare scans, we can apply the elevator kinematic problem on the trajectory points. This step yields the required time to move the scanner heads from one point of the trajectory to another, which in our case is about 14 s for the entire trajectory with an additional 22 s for measurements (consult table in Vasiljevic and Bechmann (2019b)). Overall, one complete scan of all measurement points will take about 36 s, which results in about 16 samples of each measurement point per 10-min period. Typically we aim at having at least ten 10 samples per 10-min period which is satisfied with this configuration.

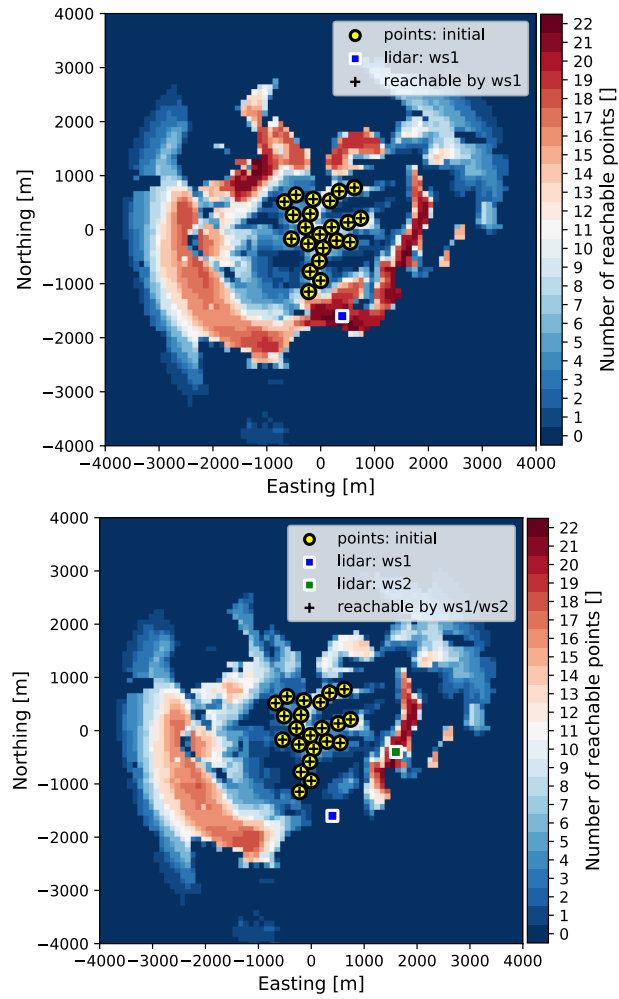
To verify that the optimized trajectory indeed takes the least amount of time we have calculated the motion time for  $10^6$  trajectory configurations by randomizing the order of trajectory points. This is a fraction of all possible permutations of trajectory points ( $P_{n=22} = 22!$ ). However, since the order of points is randomized (thus not correlated) the results are shown in Figure 8 are trustworthy. Based on the derived results the optimized trajectory is on average 8 s shorter for this specific campaign layout (i.e., the position of measurement points and lidars).

One way to gauge the value of a WindScanner campaign is to estimate how much the uncertainty of the Annual Energy Production (AEP) is reduced compared to a met mast campaign. Since the flow model can account for a large part of the total uncertainty in complex terrain; a reduction in the extrapolation distance (i.e., a distance between a turbine and measurement position) gives a reduced flow model uncertainty. A method for estimating the flow model uncertainty has been published by Clerc et al. (2012). In the paper, the part of the extrapolation uncertainty associated with the distance is proposed to be:

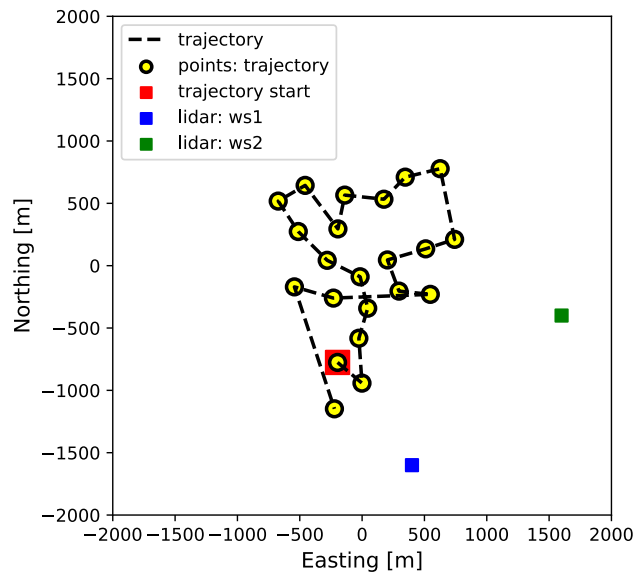
$$u_d = \lambda \left( 1 - e^{-d/L} \right) \quad (25)$$

where  $\lambda = 10\%$ ,  $L = 1 \text{ km}$  and  $d$  is the extrapolation distance.

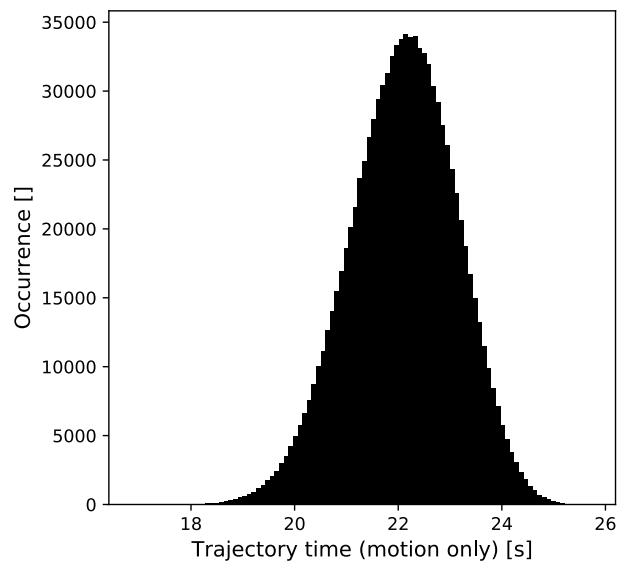
We will consider a single centrally placed met mast and calculate an average  $\bar{u}_{d_{mast}}$  taking into account all turbine positions. Based on Equation 25 we have calculated  $\bar{u}_{d_{mast}}$  to be 4.3%. Since the derived WindScanner setup allows measurements at



**Figure 6.** Placing lidars at the Scottish site: top image - locating first lidar at the combined layer, bottom image - locating second lidar at the second lidar placement layer.



**Figure 7.** Final campaign design at Scottish site.

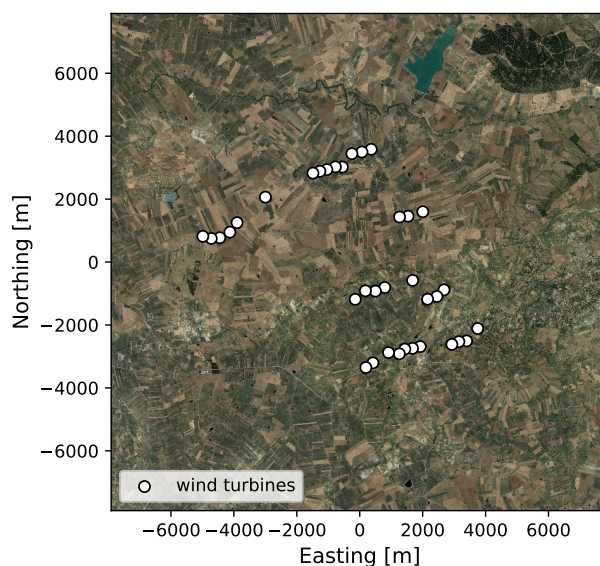


**Figure 8.** A histogram of motion time for  $10^6$  different trajectory configurations for the Scottish site. The min, mean, max and standard deviation are 17.15 s, 22.09 s, 25.76 s and 1.03 s respectively.

[every turbine location, the extrapolation uncertainty for the multi-lidar campaign will be 0%. To reproduce the previous results consult a Jupyter notebook file in Vasiljevic and Bechmann \(2019b\).](#)

### 3.3 Site 2 - Italy

The Italian wind farm consists of 36 wind turbines with a 78-m hub-height. The turbines are distributed over a large area (see Figure 9) but ~~somehow~~ [somewhat](#) clustered in small groups (Figure 15) often with inter-turbine distances of less than 300 m (3 rotor diameters). With a coastline only 10 km to the West, a complex coastal-inland wind climate transition is expected to occur across the wind farm. The terrain has an average 7% slope from the coast to the wind farm. The wind farm is surrounded by farmland, ~~though~~ [although](#) in a range of about 7 km there are several ~~medium-size towns~~ [medium-sized towns that are](#) forming an urban area ring around the farm site.

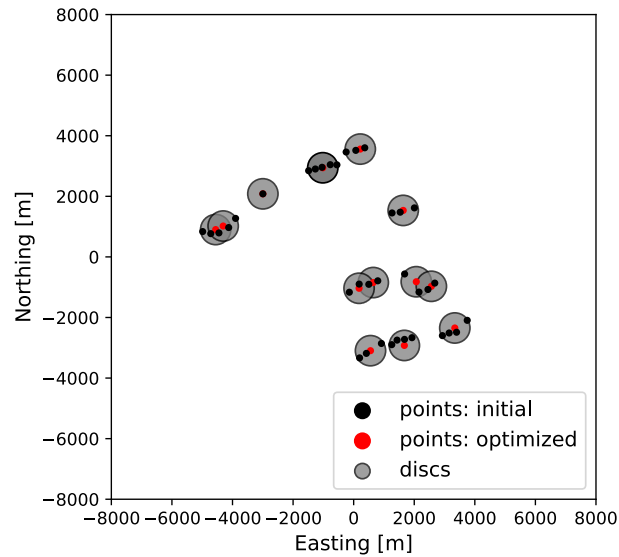


**Figure 9.** The aerial image of the Italian site. [Aerial data: ©Google Maps, DigitalGlobe.](#)

Given the specific layout of the wind farm, having more or less isolated groups of tightly packed wind turbines, we decided to apply the measurement point optimization. For this wind farm, the representativeness radius was set to 500 m, which is four times smaller than the ~~value suggested~~ [maximum suggested value](#) for the complex terrain sites (MEASNET, 2016). With this conservative setting, the optimization routine found 13 discs of radius equal to 500 m which covers all 36 wind turbine locations (Figure 15). The disc centers ~~are~~ [represent](#) measurement positions.

From there, the workflow was applied in the same way as it was for the Scottish site. In comparison to the Scottish site, the Italian wind farm is even closer to the sea, and it is surrounded by an urban area that in our experience increases the aerosol concentration resulting in an improved lidar range. Therefore, for the Italian site, we can expect to have an average measurement range of 4 km for the WindScanners. The combined layer generated ~~by the CPT~~ [using campaign-planning-tool](#)



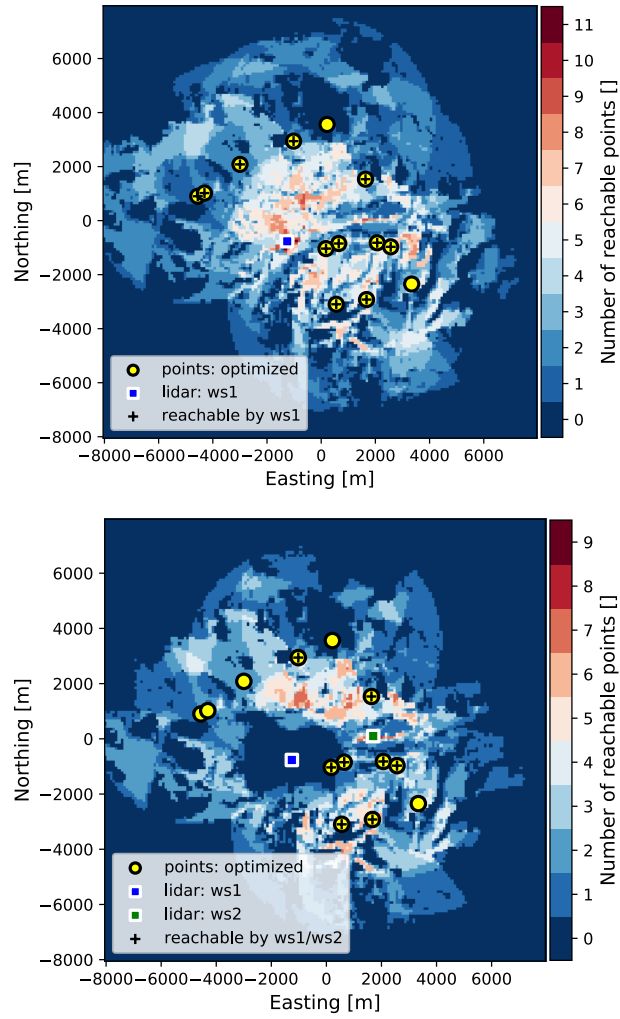


**Figure 10.** Measurement locations for Italian site: black dots - wind turbine positions, ~~red~~ grey circles - discs covering wind turbine positions, ~~green~~ red dots - optimized measurement positions (i.e., discs' centers).

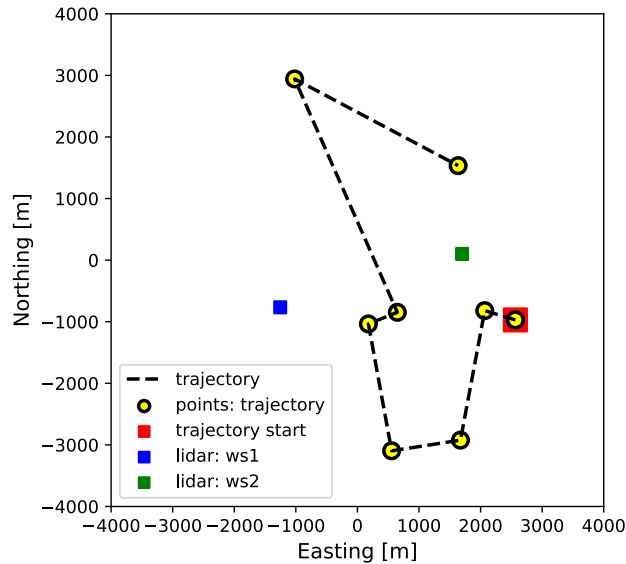
is shown as the top image in Figure 11. For this site, there are ~~actually~~ no positions from which any lidar can reach all 13 measurement positions. At best, there are only ~~two~~ a few locations from which one lidar can reach 11 out of 13 measurement points. The top image of Figure 11 shows the selected location for the first lidar installation (coordinates of ~~910 m, -640 m and 227~~ ~~1254 m, -766 m and 253~~ m Northing, Easting and height asl. respectively relative to the map center coordinates of 297200 m and ~~4189966~~ ~~4189947~~ in Northing and Easting respectively, UTM zone ~~33S~~).

~~33S~~). The layer for the second lidar placement (the bottom image in Figure 11) shows that the second lidar can ~~only reach 7 measurement positions~~ reach 9 measurement positions (not necessarily coinciding with those reachable by the first lidar) at most and this can only be achieved from a few locations. Of these locations, we selected one which assures that we cover the largest extent of the wind farm, thus getting good spatial information on the farm wind resources. The coordinates of a selected location for the second lidar are ~~1600 m, 110 m and 278~~ ~~1700 m, 100 m and 299~~ m in Northing, Easting and height asl. relative to the map center coordinates (the bottom image in Figure 11).

Considering the positions of WindScanners, reachable measurement points, and kinematic limits, we derived an optimum trajectory through the measurement points and calculated the timing for the synchronized scanner head ~~motions~~ motion (Figure 12). Based on the calculated timing for the scanner heads motion and considering one second accumulation time per measurement point, one scan through all the points takes roughly ~~21~~ ~~20~~ s of which ~~7~~ ~~8~~ s are spent on measurements (consult ~~table~~ ~~Jupyter notebook file~~ in Vasiljevic and Bechmann (2019c)). This provides us with about ~~28~~ ~~30~~ measurement samples at each measurement point within a 10-min period.



**Figure 11.** Placing lidars at Italian site: top image - locating first ~~lidar~~ lidar at the combined layer, bottom image - locating second lidar at the second lidar placement layer.



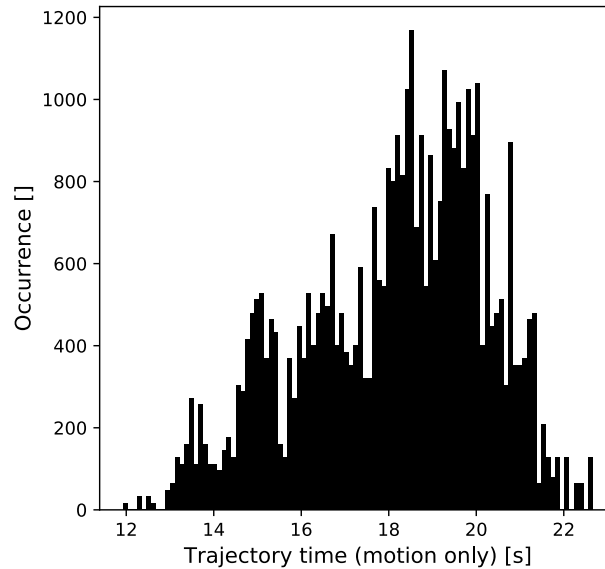
**Figure 12.** Final campaign design for Italian site.

To verify that the optimized trajectory is indeed the shortest in duration we have generated all possible trajectories by making permutations of trajectory points. Unlike for the Scottish site, for the Italian site this is feasible since the trajectory contains only 8 measurement points, thus there is 40320 (8!) unique trajectories. For each trajectory, we have calculated the total motion time considering that the lidars will be operated in sync. The results are shown in Figure 13. Based on the derived results the optimized trajectory is on average 6 s shorter for this specific campaign layout (i.e., the position of measurement points and lidars).

Like in the previous example we will calculate the averaged extrapolation uncertainty considering a single centrally placed met mast ( $\bar{u}_{d_{mast}}$ ). The derived value for  $\bar{u}_{d_{mast}}$  is 9.21%. Unlike the previous example where we were able to measure at every turbine location, the current WindScanner layout is not able to provide the equivalent measurements. Therefore, even the WindScanner measurement campaign will have the extrapolation uncertainty. To derive the extrapolation uncertainty for the WindScanner campaign ( $\bar{u}_{d_{WindScanner}}$ ) we will treat the WindScanner campaign as a multi-mast campaign and when calculating distance  $d$  for Equation 25 we will use the closest measurement point to a wind turbine location. Based on this setup the derived value for  $\bar{u}_{d_{WindScanner}}$  is equal to 4.61%. To reproduce these results consult a Jupyter notebook file in Vasiljevic and Bechmann (2019c).

### 3.4 Site 3 - Turkey

The Turkish wind farm consists of 22 wind turbines with a an 80-m hub-height. The wind farm extends 8 km from North to South (see Figure 14) with the three most northerly turbines separated by about 2 km from the rest. The inter-turbine distance is 400-500 m (4-5 rotor diameters) for most turbines. The turbines are located along a 1600 m tall North-South ridge and the main



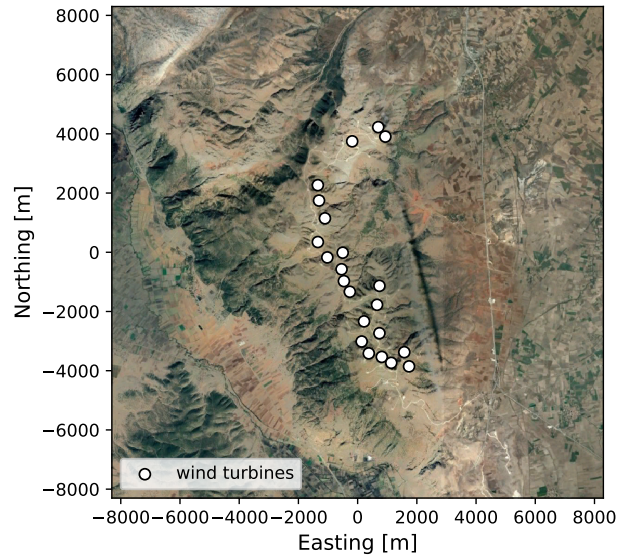
**Figure 13.** [A histogram of motion time for 40320 different trajectory configurations for the Italian site. The min, mean, max and standard deviation are 11.93 s, 18.14 s, 22.66 s and 2.1 s respectively.](#)

wind direction from North-East (i.e., perpendicular to the ridge line). In the main wind direction the mean terrain slopes are about 12% and with extremes reaching 50% the site should be regarded as very complex. The land cover is sparse vegetation with a patch of forest along Western facing slopes.

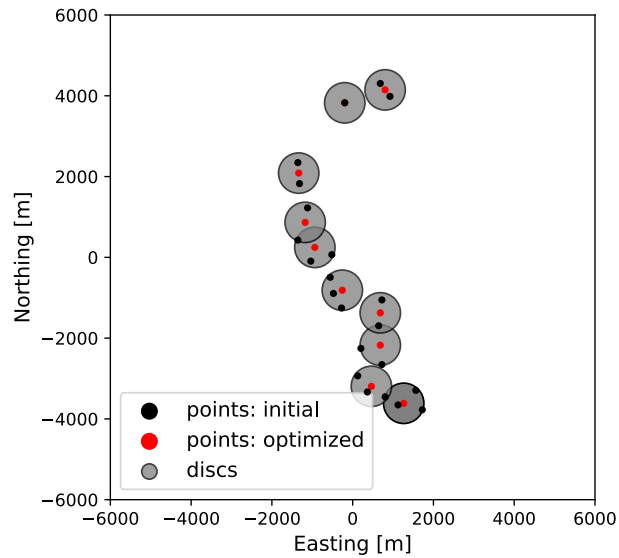
For this site, we assumed the average lidar measurement range to be 3 km, and we used the representativeness radius of  
 5 ~~500-400~~ m. Our assumption on the average range in case of the Turkish site is probably closer to what a lidar would probably  
 achieve in a field operation (thus less conservative) due to operation in high altitude where we usually experience low aerosol  
 concentration and often low clouds and fog. On the other hand, the selected representative radius is 100 m lower than in the case  
 of the Italian site, thus about 5 times smaller than the recommended value by MEASNET. Running the workflow using these  
 parameters we generate a measurement layout with 10 measurement positions (see Figure 15) with the associated combined  
 10 layer for the first lidar placement shown in Figure 16, top image.

~~Like for the Italian site case there~~ [There](#) are only a few [good](#) locations for placing the two lidars, ~~especially for two~~  
~~inter-dependent reasons one being due to~~ the wind farm length (8 km) and ~~second being the the lidar~~ average range (3 km).  
 Once again the best solution is to place the lidars in the middle of the wind farm. The top image of Figure 16 shows the first  
 lidar placement, which coordinates are ~~-1900 m, -800 m and -1497~~ [-400 m, 100 m and 1562](#) m in Northing, Easting and height  
 15 asl. respectively relative to the map center coordinates (Easting ~~249626-249672~~ [249626-249672](#) m and Northing ~~4227308-4227405~~ [4227308-4227405](#) m, UTM  
 zone ~~36-S36S~~ [36-S36S](#)).

Knowing the first lidar position leads us to the generation of the second lidar placement layers. From the bottom image in  
 Figure 16 there is ~~only a narrow area in the middle of the wind farm~~ [hardly any area](#) where the second lidar could be placed.

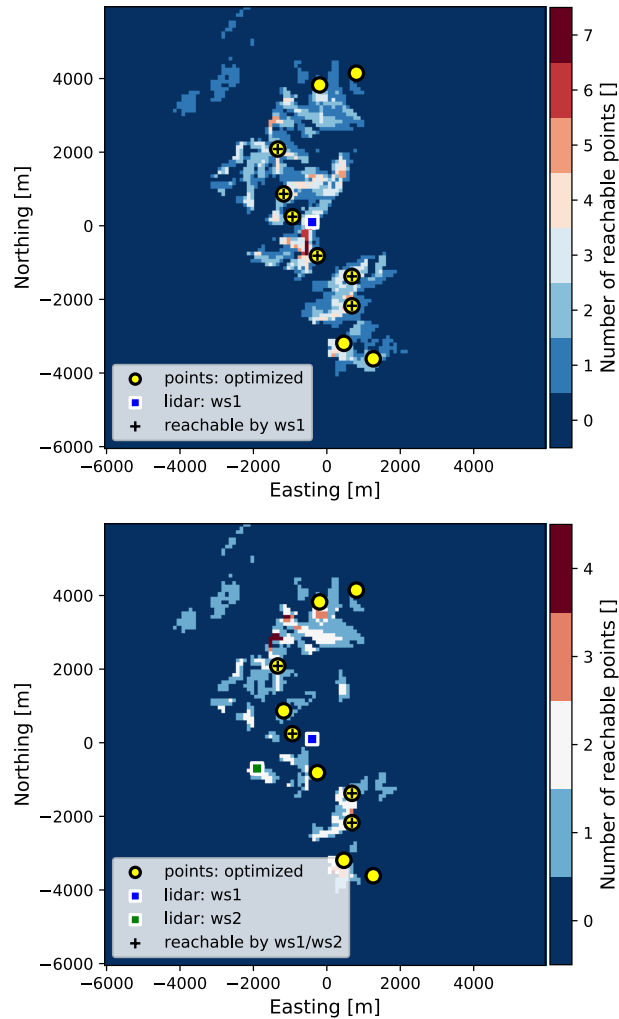


**Figure 14.** The aerial image of the Turkish site. [Aerial data: ©Google Maps, DigitalGlobe.](#)



**Figure 15.** Measurement locations for the Turkish site: black dots - wind turbine positions, [red-grey](#) circles - discs covering wind turbine positions, [green-red](#) dots - optimized measurement positions (i.e., discs' centers).

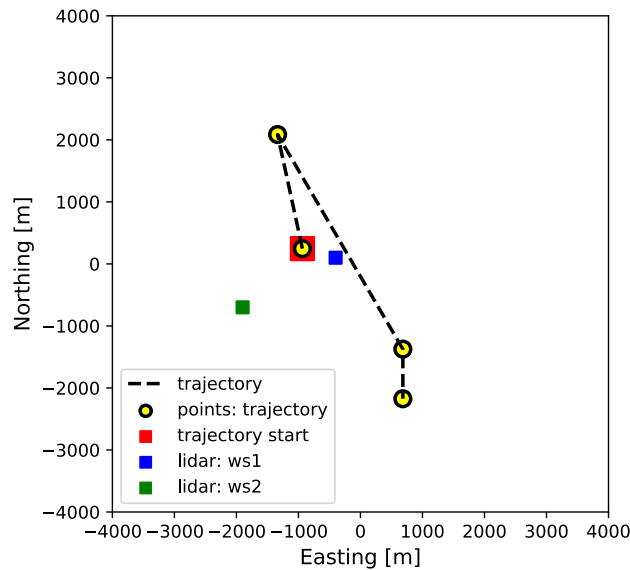
Also, the bottom image in Figure 16 shows the result of our choice for the second lidar placement (second lidar coordinates are ~~-400 m, -300 m and 1569~~ -1900 m, -700 m and 1492 m in Northing, Easting and height asl. relative to the map center).



**Figure 16.** Placing lidars at the Turkish site: top image - locating first ~~lidar~~ lidar at the combined layer, bottom image - locating second lidar at the second lidar placement layer.

The designed WindScanner layout can provide measurements in ~~6~~ 4 out of 10 measurement points ~~which that~~ cover the middle part of the wind farm (Figure 17). ~~The~~ ~~There are two measurement points in the middle of the farm that are not~~ reachable since the beam of the second WindScanner is blocked by the hill crest. Also, the upper and lower ~~quarter-quarters~~ quarter-quarters of the wind farm area are not reachable with the current layout. In principle, we would probably need two or more WindScanner systems to cover the entire wind farm (i.e., four scanning lidars).

Considering the WindScanners and measurement locations together with the kinematic limits as the input for the last phase of the workflow we reach the optimized trajectory which total time is ~~16~~ 13.26 s of which ~~6~~ 4 s are spent on the wind speed measurements. This trajectory would provide ~~us with about 35~~ about 43 samples of each measurement point within a 10-min period. Similar to the Italian site, to verify that the optimized trajectory is the shortest one all possible trajectories have been generated (the total of  $4! = 24$ ). Considering all possible trajectories, the average trajectory time (motion part only) is 11.13 s, with a standard deviation of 2.34 s. The minimum and maximum time is 9.26 s and 14.42 s respectively. To reproduce these results consult a Jupyter notebook file in Vasiljevic and Bechmann (2019d).



**Figure 17.** Final campaign layout for Turkish site.

We will repeat the same analysis of the extrapolation uncertainty as in the case of the previous sites. Considering a single centrally placed met mast the average extrapolation uncertainty  $\bar{u}_{d_{mast}}$  is equal to 8.41 %, while in case of the WindScanner campaign  $\bar{u}_{d_{dual-Doppler}}$  is equal to 5.69 %. To reproduce these results consult a Jupyter notebook file in Vasiljevic and Bechmann (2019d)

## 4 Discussion

### 4.1 Discussing results

The primary purpose of the described workflow ~~and corresponding CPT tool up to date~~ is to design ~~a measurement campaign dual-Doppler measurement campaigns~~ for wind resource assessment (WRA) ~~using a long-range WindScanner system (Vasiljevic et al., 2016) configured in a dual-Doppler mode~~. This scope follows the RECAST project ambition which is focused on developing a new way of measuring the wind over a site for resource assessment, based on multiple measurement points using WindScanners.

This has driven the choice of examples for Section 3 of this paper. However, the workflow and CPT-its digitalized version (i.e., campaign-planning-tool) described in this paper are not limited to only planning WRA campaigns. It can be used to design any campaign using one or several scanning lidars. It can easily be applied to any type of scanning lidars-lidar since it only requires lidar specifications, which are maximum-expected lidar range and scanner head kinematic limits (i.e., maximum acceleration  
5 and speed).

Planning the measurement campaign thoroughly especially with such complex instruments as scanning lidars ensures higher data availability during the campaign and eventually saves time and money. Lidars are very mobile and allow agile measurement campaigns compared to a met mast, but too often the ease of deployment is mistaken with a limited (underestimated) need of planning. This study ~~and the CPT, in general, show the main constraints to lidar measurements in complex terrain and give a practical solution by providing the most suitable positions where the lidar can be placed~~provides solutions for optimizing measurement points, lidar positions and measurement trajectory which represent a necessary foundation for accurate measurements of wind resources over the wind farm site. We have demonstrated that the above-stated optimization leads to the reduce trajectory timing and thus an increase in the sampling rate.

The point of this tool the workflow and the corresponding Python package is also to carefully consider the relevance ~~or value~~ of using scanning lidars for a measurement campaign. ~~In the example of the Scottish site, it is relevant to question how much improvement measuring at all turbine positions makes for such a small wind farm. Is it worth using a WindScanner system instead or in addition to one met mast if we compare costs versus uncertainty in horizontal and vertical extrapolation? One way to trade off for costs is to use scanning lidars for a short period, less than the 12 months required by best practices. The challenge then is the long term correction of the measurement and the related uncertainty.~~

~~This study has shown that , for a large site like the Italian or Turkish examples,~~We have shown that for large sites one set of two WindScanners cannot measure over the whole wind farm area. This is very important to realize at the campaign planning stage when there is still time to either give priority to one part of the site or consider using a second set of two WindScanners to cover the rest of the site.

~~Another major constraint that must be considered before the lidars deployment is the access roads to or near the lidar locations and possible access to a power source (e.g. existing houses, wind turbines). This is the purpose of the Satellite image used as background for the various GIS layer produced by the CPT.~~Nevertheless, with a rather simplified approach in the assessment of the AEP uncertainty, we have shown that even when WindScanners cannot cover the entire site, still a reasonable reduction of the uncertainty should be expected. Specifically, based on the presented examples, using multi-lidars and optimizing measurement and lidar positions on average the horizontal extrapolation contribution to the AEP uncertainty can be reduced between 2% to 5% compared to a single mast campaign.

~~In order to get around those very strong constraints, as already mentioned, it is, in any case, recommended to generate several campaign designs and to make a site visit with thorough inspection of the possible lidar positions and verification that the data used in the CPT were accurate and up to date (e. g. obstacles, tree height).~~



## 4.2 Improving workflow

The presented workflow ~~and developed tool (CPT)~~ can already solve many important challenges regarding the scanning lidar deployment. Nevertheless, we envisage ~~the development of several additional modules which will improve the workflow and the developed tool~~ a further development workflow and consecutively the Python package *campaign-planning-tool*.

5 In the current application of ~~CPT~~ the workflow, we were predicting the lidar range based on our experience. We plan to ~~extend the 'Lidar range' module to develop a Python package that will~~ be able to predict the lidar range ~~by developing a lidar simulator. The lidar simulator will take inputs from using~~ external databases of global atmospheric visibility ~~or aerosol optical depth~~ for a given site ~~and predict the expected lidar range. In~~. In the mean time, our suggestion when planning the lidar campaign is to generate campaign layouts considering a conservative approach in which the expected range of the lidar should  
10 be in the range between 75 % to 50 % of the claimed range by the lidar manufacturers.

Directly connected to the range prediction is the development of a ~~module which will~~ Python package which will be able to predict the lidar data availability at any desired range during the planned measurement period. ~~This module will take inputs such as the predicted range from the Lidar range module as well as the~~ taking into account, for example, the cloud height, fog or mist occurrence from the WRF model ~~to predict the data availability.~~

15 Furthermore, the ~~module for~~ proposed approach in optimizing measurement positions will be extended by considering other criteria for finding measurement positions apart from the representativeness radius. These are for example terrain elevation, speed-up factors, roughness changes, local obstacles, etc. In principle, we will strive to incorporate anything that can cause local changes in the flow. In other words, the optimization of measurement positions will consider drivers of flow model uncertainty when finding measurement positions.

20 Finally, ~~we intend to develop an eye safety module that will produce~~ eye safety has not been considered in the presented workflow. In the next iteration of the workflow, we will incorporate these issues as yet another restriction zone (GIS) layer for the placement of lidars. ~~The module will impose geometrical limitations when designing campaign layout to avoid that the laser beam is steered over the site at a height where we could expect that the human eyes can be directly exposed to it.~~

## 5 Conclusions

25 ~~In this paper, we have provided~~ This paper provides an exhaustive description of ~~the workflow we recommend for planning measurement campaigns using scanning lidars or WindScanner systems~~ a workflow for planning and configuring scanning lidar measurement campaigns. The purpose is to find the most suitable ~~positions for the lidars given the measurement positions, the characteristics of the site (topography), the characteristics of the lidars (measurement range, kinematic limits) and the position of the two lidars relative to each other~~ measurement positions (considering a preliminary wind farm layout), survey scanning  
30 lidar placements considering lidar and site constraints to secure accurate measurements and optimize scanning lidar trajectory to boost the number of measurement samples. The presented workflow can help to avoid many pitfalls that can be predicted before the start of the campaign, limiting the risks to the campaign itself. The workflow ~~is available through a Python library, named the Campaign Planning Tool, which will be made public during the RECAST project. The CPT, in its digitalized~~

version, has been demonstrated for planning campaigns for resource assessment ~~on~~ for three different sites. For a small wind farm layout, ~~the WindScanners could be placed so a dual-Doppler system could be positioned such~~ that measurements could be made at all turbine positions. For the other ~~sites, that were larger,~~ larger sites, the number of measurement points ~~was needed~~ had to be optimized and a set of two lidars could only cover some ~~part of the site. In any case, it is recommended to generate~~ several possible campaign layouts and to make a site visit to take the final decision ~~parts of the sites. Nevertheless, for all~~ examples we have demonstrated that using the proposed workflow a significant reduction of the trajectory timing and AEP uncertainty are achievable.

~~The CPT is easy and fast and helps to design realistic lidar measurement campaigns. Measurement campaigns are costly and risky, especially when using advanced measurement technology. The CPT helps to avoid many pitfalls that can be predicted before the start of the campaign, limiting the risks to the campaign itself.~~

*Code and data availability.* Data described in Section 3 of the paper are available as a data collection at <https://doi.org/10.11583/DTU.c.4559624.v3>. The code described in Section 2 of the paper is available at <https://doi.org/10.5281/zenodo.3462049>

*Author contributions.* Conceptualization, N.V., A.V. and A.B.; Methodology, N.V.; Software, N.V.; Validation, N.V.; Formal Analysis, N.V.; Investigation, N.V. and A.B.; Resources, N.V. and A.B.; Data Curation, N.V.; Writing - Original Draft, N.V., A.B., R.W. and A.V.; Writing - Review & Editing, N.V. and A.B.; Visualization, N.V.; Project Administration, N.V.; Funding Acquisition, R.W. and A.B.

*Competing interests.* Authors declare no competing interests.

*Acknowledgements.* The authors would like to acknowledge Morten Thøgersen (EMD) for his support during the conceptualization phase of the study described in the paper. The financial support for the study has been provided by the RECAST project, which is funded by Innovation Fund Denmark (7046-00021B).

## References

- Al-Sharif, L.: Intermediate Elevator Kinematics and Preferred Numbers (METE III), *Lift Report*, 40, 20–31, [https://www.researchgate.net/publication/275408222\\_Intermediate\\_Elevator\\_Kinematics\\_and\\_PREFERRED\\_Numbers\\_METE\\_III](https://www.researchgate.net/publication/275408222_Intermediate_Elevator_Kinematics_and_PREFERRED_Numbers_METE_III), 2014.
- Bingöl, F., Mann, J., and Foussekis, D.: Conically scanning lidar error in complex terrain, *Meteorologische Zeitschrift*, 18, 189–195, 2009.
- 5 Biniáz, A., Liu, P., Maheshwari, A., and Smid, M.: Approximation Algorithms for the Unit Disk Cover Problem in 2D and 3D, *Comput. Geom. Theory Appl.*, 60, 8–18, <https://doi.org/10.1016/j.comgeo.2016.04.002>, <https://doi.org/10.1016/j.comgeo.2016.04.002>, 2017.
- Carta, J. A., Velázquez, S., and Cabrera, P.: A review of measure-correlate-predict (MCP) methods used to estimate long-term wind characteristics at a target site, 27, 362–400, <https://doi.org/10.1016/j.rser.2013.07.004>, <https://linkinghub.elsevier.com/retrieve/pii/S1364032113004498>, 2013.
- 10 Clerc, A., Anderson, M., Stuart, P., and Habenicht, G.: A systematic method for quantifying wind flow modelling uncertainty in wind resource assessment, *Journal of Wind Engineering and Industrial Aerodynamics*, 111, 84–94, <https://doi.org/10.1016/j.jweia.2012.08.006>, 2012.
- Davies-Jones, R. P.: Dual-Doppler Radar Coverage Area as a Function of Measurement Accuracy and Spatial Resolution, *Journal of Applied Meteorology*, 18, 1229–1233, <https://doi.org/10.1175/1520-0450-18.9.1229>, 1979.
- Farr, T. G., Rosen, P. A., Caro, E., Crippen, R., Duren, R., Hensley, S., Kobrick, M., Paller, M., Rodriguez, E., Roth, L., Seal, D., Shaffer, S., Shimada, J., Umland, J., Werner, M., Oskin, M., Burbank, D., and Alsdorf, D.: The Shuttle Radar Topography Mission, *Reviews of Geophysics*, 45, <https://doi.org/10.1029/2005RG000183>, <https://agupubs.onlinelibrary.wiley.com/doi/abs/10.1029/2005RG000183>, 2007.
- 15 Fernando, H., Mann, J., Palma, J., Lundquist, J., Barthelmie, R., BeloPereira, M., Brown, W., Chow, F., Gerz, T., Hocut, C., Klein, P., Leo, L., Matos, J., Oncley, S., Pryor, S., Bariteau, L., Bell, T., Bodini, N., Carney, M., Courtney, M., Creegan, E., Dimitrova, R., Gomes, S., Hagen, M., Hyde, J., Kigle, S., Krishnamurthy, R., Lopes, J., Mazzaro, L., Neher, J., Menke, R., Murphy, P., Oswald, L., Otarola-Bustos, S., Pattantyus, A., Rodrigues, C. V., Schady, A., Sirin, N., Spuler, S., Svensson, E., Tomaszewski, J., Turner, D., van Veen, L., Vasiljević, N., Vassallo, D., Voss, S., Wildmann, N., and Wang, Y.: The Perdigoão: Peering into Microscale Details of Mountain Winds, *Bulletin of the American Meteorological Society*, 0, null, <https://doi.org/10.1175/BAMS-D-17-0227.1>, <https://doi.org/10.1175/BAMS-D-17-0227.1>, 2019.
- 20 Ghasemalazadeh, H. and Razzazi, M.: An Improved Approximation Algorithm for the Most Points Covering Problem, *Theory of Computing Systems*, 50, 545–558, <https://doi.org/10.1007/s00224-011-9353-4>, <https://doi.org/10.1007/s00224-011-9353-4>, 2012.
- Izraelevitz, D.: A Fast Algorithm for Approximate Viewshed Computation, *Photogrammetric Engineering Remote Sensing*, 69, <https://doi.org/10.14358/PERS.69.7.767>, 2003.
- Krishnamurthy, R., Choukulkar, A., Calhoun, R., Fine, J., Oliver, A., and Barr, K.: Coherent Doppler lidar for wind farm characterization, *Wind Energy*, 16, 189–206, <https://doi.org/10.1002/we.539>, <https://onlinelibrary.wiley.com/doi/abs/10.1002/we.539>, 2013.
- 30 Langreder, W. and Mercan, B.: Roaming Remote Sensing - Quantification of Seasonal Bias, in: *WindEurope Summit 2016*, WindEurope, <https://windeurope.org/summit2016/conference/proceedings-PrOcghyDVy/statscounter2.php?id=2&IDABSTRACT=207>, 2016.
- Mann, J., Angelou, N., Arnqvist, J., Callies, D., Cantero, E., Arroyo, R., Courtney, M., Cuxart, J., Dellwik, E., Gottschall, J., Ivanell, S., Kuhn, P., Lea, G., Matos, C., Palma, J., Pauscher, L., Peña, A., Rodrigo, J., Söderberg, S., Vasiljevic, N., and Rodrigues, C.: Complex terrain experiments in the New European Wind Atlas, *Philosophical Transactions of the Royal Society A: Mathematical, Physical and Engineering Sciences*, 375, <https://doi.org/10.1098/rsta.2016.0101>, 2017.
- 35 MEASNET: MEASNET Procedure: Evaluation of Site-Specific Wind Conditions, Version 2, [http://www.measnet.com/wp-content/uploads/2016/05/Measnet\\_SiteAssessment\\_V2.0.pdf](http://www.measnet.com/wp-content/uploads/2016/05/Measnet_SiteAssessment_V2.0.pdf), 2016.

- Mortensen, N., Heathfield, D., Rathmann, O., and Nielsen, M.: Wind Atlas Analysis and Application Program: WAsP 11 Help Facility, 2014.
- Reinelt, G.: The Traveling Salesman: Computational Solutions for TSP Applications, Springer-Verlag, Berlin, Heidelberg, 1994.
- Stawiarski, C., Träumner, K., Knigge, C., and Calhoun, R.: Scopes and Challenges of Dual-Doppler Lidar Wind Measurements—An Error Analysis, *Journal of Atmospheric and Oceanic Technology*, 30, 2044–2062, <https://doi.org/10.1175/JTECH-D-12-00244.1>, 2013.
- 5 Vasiljevic, N.: (2.5 + 5.8) Years of successes and failures with long-range WindScanner system, <https://doi.org/10.5281/zenodo.1442592>, <https://doi.org/10.5281/zenodo.1442592>, 2018.
- Vasiljevic, N.: campaign-planning-tool v0.1.3, <https://doi.org/10.5281/zenodo.3462049>, <https://doi.org/10.5281/zenodo.3462049>, 2019.
- Vasiljevic, N. and Bechmann, A.: Campaign Planning Tool results for three sites in complex terrain, <https://doi.org/10.11583/DTU.c.4559624.v5>, last access: 2019-09-26, 2019a.
- 10 Vasiljevic, N. and Bechmann, A.: Dual-Doppler measurement campaign design for complex terrain site in Scotland, <https://doi.org/10.11583/DTU.8344028.v3>, last access: 2019-09-26, 2019b.
- Vasiljevic, N. and Bechmann, A.: Dual-Doppler measurement campaign design for complex terrain site in Italy, <https://doi.org/10.11583/DTU.8343989.v3>, last access: 2019-09-26, 2019c.
- Vasiljevic, N. and Bechmann, A.: Dual-Doppler measurement campaign design for complex terrain site in Turkey, <https://doi.org/10.11583/DTU.8344061.v3>, last access: 2019-09-26, 2019d.
- 15 Vasiljevic, N. and Courtney, M.: Accuracy of dual-Doppler lidar retrievals of near- shore winds, <https://doi.org/10.5281/zenodo.1441178>, <https://doi.org/10.5281/zenodo.1441178>, 2017.
- Vasiljevic, N. and Hasager, C. B.: WindScanner Information System, <https://doi.org/10.5281/zenodo.1175211>, <https://doi.org/10.5281/zenodo.1175211>, 2015.
- 20 Vasiljevic, N., Lea, G., Courtney, M., Cariou, J.-P., Mann, J., and Mikkelsen, T.: Long-Range WindScanner System, *Remote Sensing*, 8, <https://doi.org/10.3390/rs8110896>, <http://www.mdpi.com/2072-4292/8/11/896>, 2016.
- Vasiljević, N., L. M. Palma, J. M., Angelou, N., Carlos Matos, J., Menke, R., Lea, G., Mann, J., Courtney, M., Frölen Ribeiro, L., and M. G. C. Gomes, V. M.: Perdigão 2015: methodology for atmospheric multi-Doppler lidar experiments, *Atmospheric Measurement Techniques*, 10, 3463–3483, <https://doi.org/10.5194/amt-10-3463-2017>, <https://www.atmos-meas-tech.net/10/3463/2017/>, 2017.