

**Authors' point-by-point response to Revised Submission comments on
"Comparing Abnormalities in Onshore and Offshore Vertical Wind Profiles"
WES-2019- 40 by Mathias Møller, Piotr Domagalski, and Lars Roar Sætran**

Mathias Møller, Piotr Domagalski, and Lars Roar Sætran

We thank both Anonymous Referee 1 (AR1) and Anonymous Referee 3 (AR3) for valuable comments helping to improve the manuscript. In the following, we will provide a point-by-point response to Anonymous Referee #3's comments and the corresponding manuscript changes. When highlighting the changes, the page and line numbers referred to are all in the marked-up manuscript, this is done to facilitate simple change tracking.

Anonymous referee 3 general comments:

The representativeness of the onshore sites. Three sites are coastal and one is located in a forested region. It could have been interesting to include an onshore flat and open site in the analysis, which could have been a kind of reference regarding the applicability of MOST.

The methodology which has been applied, which consists in detecting local maximums or minimums in the wind speed profiles. These maximums or minimums are characterized by their number, without any consideration of their magnitude. Very weak inflections in the wind speed profile are not very significant (taking into account the uncertainties and the representativeness of the measurements) and will have no impact on wind turbines, and more generally won't be relevant in wind engineering. A filtering could have been applied on the data set in order to retain only significant inflections in the analysis. The new paragraph on "inflection severity" answers partially to this weakness by providing the occurrence probability as a function of the inflection magnitude (for 1-inflection profiles only). But it shows that imposing a minimum of 0.2 m/s for this magnitude would remove a large part (up to 70-75% for some sites) of the detected inflections. I would suggest to take that into account in the conclusions and in the abstract. For example, I think that the proportion of inflected profiles which is mentioned for offshore sites (65-75%) is a bit misleading, due to the high occurrence of unstable cases for these sites, for which the inflections are most of the time not really significant and have probably no practical impact.

However this paper can still be considered as a useful contribution to the characterization of the wind vertical profiles.

The authors' reply to AR1 general comment:

The authors thank AR3 for the generally positive comments. Regarding the issue of the weakly inflected profiles, the authors are in full agreement that the weakly inflected profiles have little impact on wind turbines. In the previous revision of the manuscript the authors argued that employing a severity threshold for all inflections would limit the wider scope and relevance of the

work which in its current form is not only limited to wind turbine engineering. Covering this issue did lead to the additional paragraph “4.5 Inflection Severity” in revision of the manuscript. This is also pointed out by AR3. The authors also agree that the leading results in the abstract and conclusion should give an additional focus to the occurrence of severely inflected profiles. The second part of the sentence on page 1 line 12 is therefore changed to:

“...causing up to 17% severely inflected abnormal profiles at the most exposed offshore site, which decreases as the location transitions from offshore to coastal to further inland, and is lowest at the forested site.”

Anonymous Referee 3 specific comments:

Anonymous Referee 3 major remark 1: Abstract

I don't think we can say that “the occurrence of local maxima scales inversely to the roughness length”. This occurrence results from a combination of different physical processes among which other parameters (especially the stability) play an important role. Page 15 line 4 the authors mentioned that “the onshore occurrence of abnormal profiles is found to scale inversely with the distance to shore”, which is a different conclusion.

The authors' reply to AR3 major remark 1:

The authors fully agree that the occurrence of local maxima is dependent on more than only the roughness length, the wording “scales inversely” was therefore chosen. For clarity, the phrasing is on page 1 line 12 changed to:

“The results reveal that the occurrence of local maxima is higher at sites of low surface roughness and a high prevalence of unstable atmospheric conditions.”

Anonymous Referee 3 major remark 2: Paragraph 3.2:

I am surprised that no direction sector was excluded from the analysis for the 3 FINO masts. For example, it is explained in paragraph 3.1.4 that for the FINO3 mast, only the anemometer installed in the direction 345° was used for consistency between vertical levels. Therefore a sector filtering should have been applied, especially regarding the very weak inflections of wind speed which are considered in the analysis.

The authors' reply to AR3 major remark 2:

In general the authors share the impression that analysis of FINO masts data and in fact all wind mast data, requires careful thought on how to deal with mast distortion effects. The authors do however believe this issue has already been discussed in section 3.2.1 “filtering mast distortion” of the current manuscript. We quote from the section:

“The data from the FINO sites includes mast corrected wind speeds based on a uniform ambient flow correction (UAM) algorithm (Westerhellweg et al., 2012), mast corrected wind speeds were however only available at all heights at the FINO2 site. The analysis in this study was conducted on both the mast-corrected and non-corrected wind speeds at FINO2, as well as both including and excluding the mast-distorted sectors at all FINO sites. The results were found to be similar in all cases, thus no mast

distortion filtering was employed. The same conclusion was drawn by Kettle (2014) when studying local maxima at FINO1”

Anonymous Referee 3 major remark 3: Paragraph 3.3

Please mention the vertical levels that have been used to evaluate the stability. As mentioned by the authors, the distribution of stability was found by Argyle and Watson (2014) as very sensitive to the measuring heights used. In their paper, the occurrence of very unstable conditions was found to vary between about 38% to 70% depending on these heights. Thus it is difficult to state that there is a reasonable agreement between the two papers on this occurrence.

The authors’ reply to AR3 major remark 3:

The authors agree that this information should be present and suggest the following edit on page 13 line 26:

“At the offshore sites, the following heights were used in the stability calculation: 50m and 70m at FINO1 and FINO2, and 30m and 55m at FINO3. At the onshore sites the following height was used in addition to the surface temperature: 40m at Skipheia, and 100m at Høvsøre. These heights were chosen due to high data availability, and where possible the main correlations between atmospheric stability and wind profile inflections have been cross-checked using different stability measurement heights. The cross-reference was found to strengthen the main findings related to atmospheric stability. There is nonetheless

Anonymous Referee 3 major remark 4: Page 19 lines 15-17:

The sentence is not clear: if I understand correctly, the stability is not associated to the inflection height itself but to the time stamp corresponding to the occurrence of this inflection.

The authors’ reply to AR3 major remark 4:

The authors are in full agreement with AR3, it is of course the time stamp corresponding to the occurrence of the inflection which is relevant. For clarity the authors suggest the following change to the manuscript on page 19 line 10:

“The occurrence at each height is however also found to be strongly coupled with the atmospheric stability at the time of profile inflection. This is discussed in Section 4.4.2 which addresses the changes in stability distribution when inflections occur at varying heights.”

Anonymous Referee 3 major remark 5: Page 20 line 11

The height at which the wind speed is considered should be mentioned

The authors’ reply to AR3 major remark 5:

It is in fact the mean wind profile which is considered and not the wind speed at a specific height. This way the comparison of data from different sites, with different wind speed measurements levels, is possible. This is clarified in the manuscript by the following suggested edit on page 10 line 12:

“The inflections during very unstable conditions show significantly larger variation in the *magnitude of the mean wind speed profile* with a changing maximum height, which can be seen at FINO3 (the

site with the largest variation) by the order from left to right of the profiles in the top right plot of Fig. 10 versus the bottom right plot of Fig 10.”

Anonymous Referee 3 major remark 6: Page 21 lines 10-13

The sentence is not clear, please rephrase it.

The authors’ reply to AR3 major remark 6:

The authors address the comment by suggesting the following edit to the manuscript on page 22 line 4:

“Considering the offshore sites FINO1 and FINO2 first, the occurrence of a very stable atmosphere is higher when the maximum occurs at a lower altitude ($\approx 30\%$ and $\approx 50\%$ respectively), however when a maximum occurs at a higher altitude the occurrence of stable conditions is lower and instead very unstable conditions becomes increasingly dominant.”

Anonymous Referee 3 major remark 7: Page 24 line 11

The decrease in very unstable conditions appears clearly for Skipheia, but is not so clear for Hovsore.

The authors’ reply to AR3 major remark 7:

The authors agree with this remark and suggest the following edit on page 23 line 8:

“Onshore (Skipheia and Høvsøre) there is an increase in neutral, slightly stable and slightly unstable conditions as the inflection rises.”

Anonymous Referee #3 technical corrections:

The authors have found it most efficient to only comment on the technical corrections if we are not in agreement with the technical corrections. Otherwise, the suggested corrections listed below will be implemented in the revised manuscript.

Anonymous referee 3 technical correction 1:

p. 5 l. 12: I would suggest to define N_{max} in a general way without reference to a Python function.

The authors reply to AR3 technical correction 1:

The authors thank AR3 for the comment, and agree that Python functions should not be used. The definition is however also given in the manuscript in terms of the mathematical floor operators. Including the floor()-definition was done to enlighten readers unfamiliar with this mathematical operator. The authors therefore believe that the definition will be more clearly communicated if it stands as it is at the current state.

Anonymous referee 3 technical correction 2:

p. 11 l. 23: “an” should be replaced by “and”

Anonymous referee 3 technical correction 3:

p. 12 l. 21: “accuraccy should be replaced by “accuracy”

Anonymous referee 3 technical correction 4:

p. 17 l. 3: “the results of FINO1” should be replaced by “the results of FINO1 are”

Anonymous referee 3 technical correction 5:

p. 18 l. 1: “confirm that offshore sites to a larger degree experience local maximum in the wind profile than onshore sites” should be replaced by “confirm that offshore sites experience local maximum in the wind profile to a larger degree than onshore sites”

Anonymous referee 3 technical correction 6:

p. 19 l. 4: “the cause of this is result” should be replaced by “the cause of this result”

Anonymous referee 3 technical correction 7:

p. 21 l. 10: “specifically the the” should be replaced by “specifically the”

Anonymous referee 3 technical correction 8:

p. 24 in the figure 10 caption : “not shown” instead of “not show”

Anonymous referee 3 technical correction 9:

p. 26 l. 7: “over several height measurement” should be replaced by “over several measurement heights”

Anonymous referee 3 technical correction 10:

p. 27 l. 5: “the difference in speed at” should be replaced by “the difference between the wind speed at”

Anonymous referee 3 technical correction 11:

P. 28 l. 7: If the paragraph “Wind direction of inflected profiles” is removed, please remove the title of this paragraph as well.

The authors' response to AR3 technical correction 11:

The section has not been removed, the authors have however noticed that this section was missing in the manuscript outlining the differences between the initial and revised submission. For this the authors sincerely apologize, the error will be corrected for the final submission.

Anonymous referee 3 technical correction 12:

P. 28 l. 11: “has” should be replaced by “have”

Anonymous referee 3 technical correction 13:

p. 28 l. 13: “was” should be replaced by “were”

The authors' response to AR3 technical correction 13:

The authors thank AR3 for the comment but do believe “was” has been used correctly.

Anonymous referee 3 technical correction 14:

p.28 l. 27: I suggest to replace “spectrum” by “range”

Comparing Abnormalities in Onshore and Offshore Vertical Wind Profiles

Mathias Møller^{1, 3}, Piotr Domagalski², and Lars Roar Sætran¹

¹Department of Energy and Process Engineering, Norwegian University of Science and Technology, 7491 Trondheim, Norway

²WindTak sp. z o.o., ul. Wróblewskiego 38a, 93-578 Łódź, Poland

³BearingPoint Norway AS, Tjuvholmen Allé 3, 0252 Oslo, Norway

Correspondence: Mathias Møller (mathias.moller1@gmail.com), Piotr Domagalski (piotr.domagalski@windtak.pl)

Abstract. Understanding the vertical wind profile is paramount for design & operation of wind turbines. It is needed not only for extrapolation of the wind velocity to hub height but also for structural load calculations, to name the most obvious issues. As wind turbines grow in size and development transitions offshore, issues such as shallow surface layers, low-level jets (LLJ's) and internal boundary layers (IBL's) are raising questions to the applicability of the commonly used Monin-Obukhov similarity theory to accurately describe the vertical wind development to modern wind turbine hub heights. In this study the 10-minute averaged vertical wind profile up to a minimum elevation of 100m is analyzed through measurements collected from seven sites which represent a span of conditions. Three sites are located offshore in the North/Baltic Sea (FINO1, FINO2 and FINO3) with varying fetch, two onshore by the Norwegian coast (Frøya and Valsneset), one further onshore by the Danish coast (Høvsøre), and one is an inland forested site in Sweden (Ryningsnäs). Through analysis of data series ranging from 8 months to several years depending on the site, the wind profile has been quantitatively categorized according to the number of exhibited local maxima which are not possible within Monin-Obukhov similarity theory. The results reveal that the occurrence of local maxima ~~scapes inversely to the roughness length, causing 65—75% abnormal profiles offshore~~ is higher at sites of low surface roughness and a high prevalence of unstable atmospheric conditions, causing up to 17% severely inflected abnormal profiles at the most exposed offshore site, which decreases as the location transitions from offshore to coastal to further inland, and is lowest at the forested site. The results indicate that issues in predicting the vertical wind profile are most prevalent offshore, where very stable inflections cause severe deviations which may be related to an offshore internal boundary layer. These findings suggest that there is evident need of an improved vertical wind profile description in order to improve the accuracy of power predictions and load calculations, especially at offshore and coastal sites.

1 Introduction

As the extent of wind energy extraction grows, there is and has been an increasing focus on wind energy at offshore locations (Nunalee and Basu, 2014). In 2018 wind energy accounted for 48% of total installed power capacity in the EU, the most of any power generation (WindEurope, 2019). Of this capacity 26% was installed offshore, down 16% from the record year 2017. When deciding where to build and commission wind farms, knowing the wind speed which crosses the wind turbine area

is crucial in assessing the site feasibility. When the rotor disc wind speed is not measured directly, the assessment relies on models to extrapolate the wind speed to the relevant elevations (Sempreviva et al., 2009). These models may also be used when extracting wind speeds retained from numerical weather prediction tools, or through predictive energy yield calculations. The accuracy of the method for extrapolating the wind speed is evidently crucial, and relies on an understanding of the underlying physics causing the wind speed development. A correct vertical wind profile (VWP) description is also important in power predictions at operational wind farms which lessens the need of short term energy storage and increases the park efficiency (Kalvig et al., 2014). Additionally, the wind speed and the wind shear are important when assessing turbine loads (Eggers Jr. et al., 2003).

The vertical development of velocity in the surface layer of the atmosphere may be theoretically described through the framework of Monin-Obukhov similarity theory (MO-theory, MOST) (Arya, 1988). MO-theory assumes constant vertical fluctuations of temperature, velocity and shear stress, sufficient time averaging and a uniform surface roughness, (Foken, 2017). Under these assumptions MOST enables the description of the velocity development with height $u(z)$ through the logarithmic law (Eq. 1). The logarithmic law describes the vertical development of velocity in the surface layer which is typically only the shallowest 10% of the atmospheric boundary layer. The depth of the surface layer where MO-theory is valid varies with the state of the atmosphere, from only a few meters during very stable stratification to several hundred meters during conditions of vigorous turbulent mixing.

$$u(z) = \frac{u_*}{k} \left[\ln \left(\frac{z}{z_0} \right) - \psi \left(\frac{z}{L} \right) \right] \quad (1)$$

In Eq. 1 L is the *Obukhov length* which describes the relative importance of buoyant and mechanical effects in atmospheric turbulence, z_0 is the roughness length, k is the von Kármán constant, and u_* is the *friction velocity* (Stull, 2017). The value of ψ changes with atmospheric stability and is negative during stable atmospheric conditions, zero for the special neutral case, and positive in unstable conditions. The determination of the stability function ψ must be done empirically which was a large focus after the theory was initially presented (Foken, 2006). The Kansas field experiment of 1968 largely validated Monin-Obukhov theory as accurately describing the vertical wind profile within the surface layer over flat homogeneous terrain using a 32m high mast (Kaimal and Wyngaard, 1990).

Another commonly used vertical wind profile description is the empirically proven power law (Eq. 2) which is due to its relative simplicity commonly employed in turbine engineering (Emeis, 2013).

$$u(z) = u(z_r) \left(\frac{z}{z_r} \right)^\alpha \quad (2)$$

In Eq. 2 z_r is a reference height where the wind velocity $u(z_r)$ has been measured. The power coefficient α has traditionally been assumed constant over the vertical extrapolation range, but if applied over ranges exceeding 10-20m should be described as a function of height and atmospheric stability (Emeis, 2014). Although the simplicity of the power law in its original form with $\alpha = const$ makes its use tempting, the lack of connection with the underlying physics makes it less relevant in atmospheric boundary layer (ABL) research.

MO-theory has for a long time been a commonly applied theoretical framework of describing the surface layer winds relevant for wind turbine engineering, studies are however revealing that the height limitations of its applicability may make it less suitable for common turbine heights (Gualtieri, 2019). Onshore Gryning et al. (2007) found progressive deviations from the scaling predicted by MO-theory above 50-80m in a study of wind over flat and homogeneous terrain. The study proposed
5 additional length scalings enabling the description of the vertical wind profile through the entire atmospheric boundary layer (ABL) which better replicated measured values. In a review of issues in wind energy meteorology Emeis (2014) also highlights the importance of implementing a unified vertical wind profile description which is not solely valid in the surface layer. The limitations of Monin-Obukhov theory are known to become more pronounced under stable stratification of the atmosphere when buoyant forces are negative, which often causes shallow surface layers (Emeis, 2013).

10 Onshore winds in the vicinity of obstacles and surface changes are also known to be prone to internal boundary layer formations which cause deviations in the vertical wind profile. An IBL due solely to a change in surface roughness has been found through measurements at the onshore site Cabauw (Verkaik and Holtslag, 2007), while a combination of a step change in both surface roughness and temperature was found to cause an IBL development at the onshore site Høvsøre located less than 2km from the sea (Peña et al., 2016). The onshore internal boundary layer is however a short-lived spatial phenomenon
15 due to the increased mixing caused by higher surface roughness.

While the aforementioned studies describe some of the issues found in onshore environments, the low surface roughness and large heating capacity of the sea makes the offshore use of MO-theory complicated. Lange et al. (2004) studied the vertical wind profile 11km offshore in the Danish Baltic Sea and found that MO-theory systematically under-predicted the wind speed at 50m during near-neutral and stable conditions. Tambke et al. (2005) also found larger than predicted wind speeds at 62m at
20 Horns Rev in the North sea located 18km offshore, which was observed for all stability conditions. There is however ambiguity in these findings, as Peña et al. (2008) found an opposite result, namely that surface-layer theory *over-predicted* the wind speed at elevations above 30-40m during stable atmospheric conditions. Implementing the Gryning et al. (2007) correction provided better agreement with the measured wind speeds. These findings were supported by Sathe et al. (2012) who also found an over-prediction of the wind speed by surface-layer theory at higher altitudes during stable atmospheric conditions which could
25 be accounted for by employing the Gryning et al. (2007) correction.

An explanation of these incorrectly predicted offshore wind speeds during stable conditions may be emerging in the form of a stable offshore internal boundary layer. The offshore stable internal boundary layer is associated with a change in both surface roughness and temperature and its evolution has been described by Csanady (1974) and Smedman et al. (1997). When warm air on land transitions offshore to a colder sea, an internal boundary layer develops where the air is cooled from the sea.
30 The lower air will after a distance approach the sea temperature, while a very stable inversion lid has developed above. Lange et al. (2004) suggests this inversion lid may be categorized by larger than expected wind speed gradients which were not well predicted by MOST, but could be partly accounted for through an inversion height correction. While most studies on the stable offshore IBL have been performed in the Baltic Sea, the limited heat flux through this inversion lid means that coastal effects may persist for several hundred kilometers offshore before the temperature differences dissolve, and signs of a distinct thermal
35 layering have been found in the North Sea 80km offshore at the FINO3 research mast (Argyle and Watson, 2014).

While the issue of incorrectly predicting the vertical wind profile has mainly been associated with stable stratification at offshore sites, Riedel et al. (2005) suggests that at the FINO1 site located 45km offshore, the vertical wind gradient was over-predicted during unstable conditions and under-predicted during stable conditions. Other studies have however found that MOST is satisfactory in correctly predicting wind shear at offshore locations (Peña et al. (2008), Sathe et al. (2012), Argyle and Watson (2014)).

The deviations between vertical wind profile models and measurements at higher altitudes during stable stratification may be coupled to low-level jets which are known to cause deviations between wind speed measurements and models (Svensson et al., 2016). The main focus of research has previously been on the onshore nocturnal LLJ which may occur at typical turbine hub heights of 100-200m AGL (Nunalee and Basu, 2014). The offshore low-level jet lacks the same level of understanding, but offshore low-level jets in the Baltic Sea have been found analogous to the onshore nocturnal low level jet, which reached elevations as low as 30-150m (Smedman et al., 1995).

Evidently the limitations of MO-theory to only being applicable within one layer of uniform vertical fluctuations in the atmospheric boundary layer makes its use limited for wind energy applications where internal boundary layers and shallow surface layers prevail. The identification of these phenomenon is however not simple, a growing body of methods are therefore emerging for assessing deviations from the common vertical wind profile formulations. In a study of the offshore vertical wind profile at FINO1, Kettle (2014) simply categorized the VWP as abnormal if it exhibited a local maximum and thus did not conform with the monotonically increasing behaviour predicted by MO-theory. Most of the profiles were in fact found to exhibit one or more local maxima, and even cases of the wind monotonically decreasing with height were identified. Local maxima in the vertical wind profile were also discovered by Wagner et al. (2009), who found the negative shear above the maximum to have a large impact on available power when accounting for wind shear across the rotor diameter. Maxima or 'kinks' in the vertical wind profile may be used both onshore and offshore to describe the height of a surface layer discontinuity (Garratt, 1990). In the present study large datasets primarily comprising several years of 10-minute averaged vertical wind profile measurements will be analyzed for the occurrence of abnormalities in the form of local maxima. The profiles are measured at 7 locations in onshore, offshore, coastal and forested environments from near-surface elevations up to a height of 100-140m depending on the site. The method of identifying local maxima is chosen due to its simplicity while additionally having a natural coupling with phenomenon associated with discontinuities in the atmospheric boundary layer. The goal is to map how these abnormalities occur and change with site location characteristics, and understand how they are correlated to atmospheric features such as wind speed and stability. The findings are also assessed in terms of the possibility of these profiles causing significant deviations in the common vertical wind profile descriptions. Based on this the applicability of the commonly used vertical wind profiles may be evaluated, and the need for more accurate vertical wind profile descriptions can be discussed. It is emphasized that the scope of the paper focuses on the applicability of the theory commonly employed today, and not the validity of the theory itself.

2 Method

2.1 Abnormal profile identification

In the process of identifying abnormal vertical wind profiles, the method of identifying local maxima previously implemented by Kettle (2014) is employed. In this method a 10-minute averaged profile is categorized as abnormal if the velocity profile is not monotonically increasing for all heights, and the abnormal profiles can subsequently be categorized by the number of inflections they exhibit. This method was chosen due to the robustness in that all profiles can be placed with certainty within one category, while simultaneously enabling the identification of discontinuities in the layering of the atmospheric boundary layer which may be associated with kinks in the velocity profile (Garratt, 1990). The time-averaging of the profiles was not extended to longer periods ~~that~~ than the 10-minute average since the project aims at describing dynamical discontinuities which are simultaneously within the range of where classical MO-theory becomes applicable (Petersen et al., 1998).

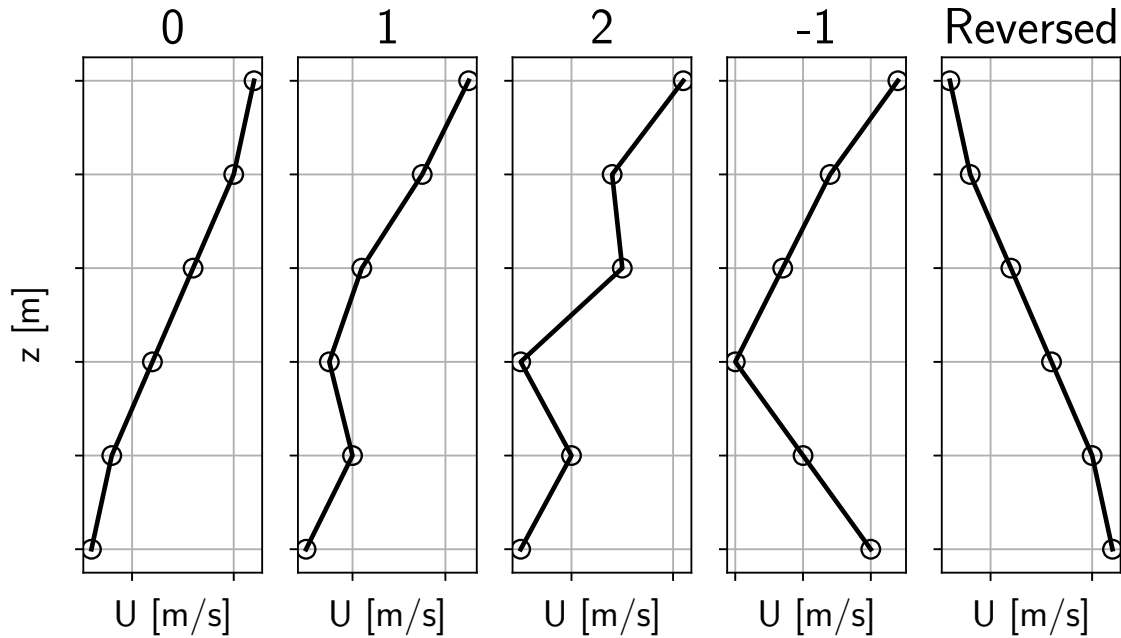


Figure 1. Possible vertical wind profile categories when categorizing according to the number of local maximum at a site with 6 measurement heights. Titled according to the number of maxima.

The number of profile ~~maximum~~ maxima possible is a function of the number of measurement heights, and can be described as $N_{max} = \text{floor} \left(\frac{N_h - 1}{2} \right) = \lfloor \frac{N_h - 1}{2} \rfloor$ where N_h is the number of measurement heights, and N_{max} is the highest number of maximum possible in the vertical wind profile. For a site with 6 measurement sites this would allow at most 2 profile ~~maximum~~ maxima. In addition, a profile with 0 local maximum may exhibit 1 local minimum where the velocity profile is decreasing up to this height and thereafter increasing. This category was appropriately named the -1 local maxima category, or

the 1 minimum category. Profiles were also found where the velocity development was reversed and monotonically decreasing at all measurement heights. An example of the possible profiles for a site with six measurement heights is shown in Fig. 1, and a random selection of profiles from one measurement site is shown in Fig. 2.

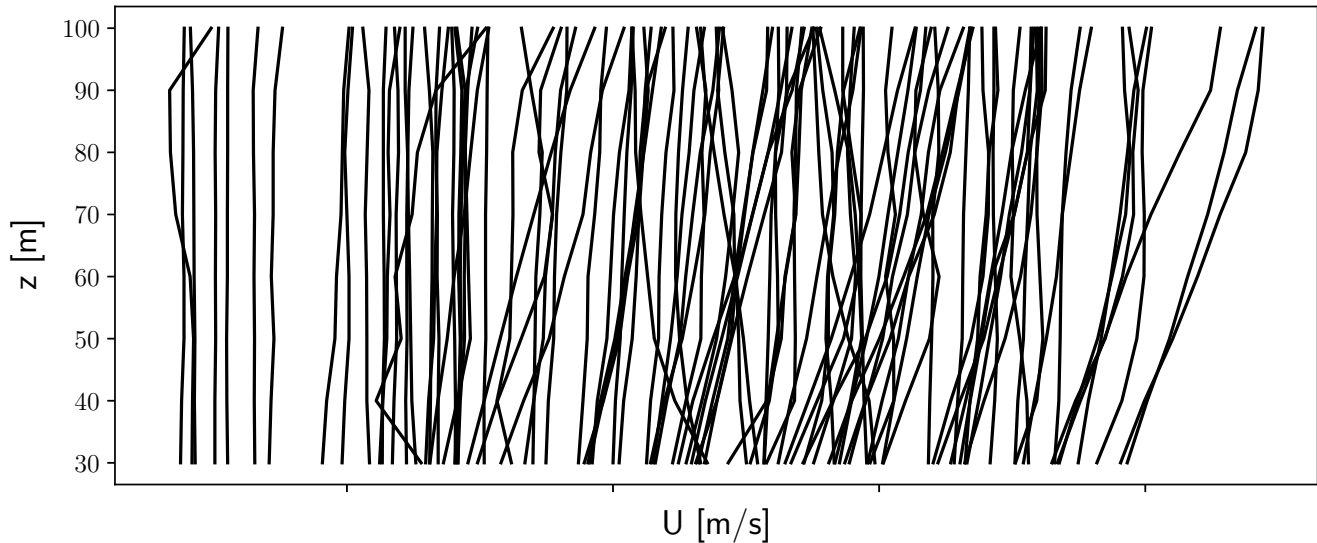


Figure 2. 10-minute averaged vertical wind profiles at FINO2, where the wind speed at the lowest measuring point is shifted by 0.3 m/s per profile. Each profile is taken 20 hours after the previous.

3 Data description

- 5 Measurements from a total of seven sites were studied in this analysis, starting at heights between 10-40m, and extending to 100-140m depending on the site instrumentation. The exact measurement heights at each site used is given in Table 1. The sites were chosen based on data availability and location, with the aim of having data sets of high quality and a diversity of locations. Of the seven sites, 3 were located offshore (FINO1, FINO2 and FINO3) in the North or Baltic Sea with varying distance to shore, and 4 onshore (Skipheia, Høvsøre, Valsneset and Ryningsnäs). The location of each site can be seen in Fig. 3 and Fig.
- 10 4. Of the 4 onshore sites, Skipheia and Valsneset are located in direct proximity to the sea and were therefore additionally categorized as coastal. Høvsøre is in this study occasionally referred to as semi-coastal since it is located only 1.7km from the Danish North Sea coastline and mainly experiences offshore incoming winds.

The time periods of the data recordings as well as the data availability after filtering the data according to the method described in Section 3.2 can be seen in Table 2. The data coverage was for all sites except Valsneset at least one year, and for many sites covered several years, yielding a robust framework for conducting a thorough analysis. At the FINO sites the used

15 time periods were chosen to be early in the mast lifetime due to high data availability and simultaneously avoiding distortion

Site	Measurement	Height [m]	Removed
Skipheia	Wind speed	10, 16, 25, 40, 70, 100	-
	Wind direction	10, 16, 25, 40, 70, 100	-
	Temperature	0.2, 10, 16, 25, 40, 70, 100	-
	Relative humidity	<i>Extrapolated from nearby source</i>	-
	Pressure	<i>Extrapolated from nearby source</i>	-
FINO1	Wind speed	33, 42, 52, 62, 72, 82, 92, 103	-
	Wind direction	33, 51, 71, 91	51, 71
	Temperature	33, 42, 52, 72, 101	
	Relative humidity	34, 42, 52, 72, 101	42, 72
	Pressure	21, 92	92
FINO2	Wind speed	32, 42, 52, 62, 72, 82, 92, 102	-
	Wind direction	31, 51, 71, 91	-
	Temperature	30, 40, 50, 70, 99	-
	Relative humidity	30, 50, 99	-
	Pressure	30, 90	-
FINO3	Wind speed	31, 41, 51, 61, 71, 81, 91, 101	-
	Wind direction	29, 101	-
	Temperature	29, 55, 95	95
	Relative humidity	29, 55, 95	-
	Pressure	23, 95	-
Høvsøre	Wind speed	10, 40, 60, 80, 100, 116.5	-
	Wind direction	10, 60, 100	-
	Temperature	0, 2, 100	-
	Relative humidity	2, 100	-
	Pressure	2, 100	-
Valsneset	Wind speed	40, 50, 60, 70, 80, 90, 100, 110, 120, 130, 140	-
	Wind direction	40, 50, 60, 70, 80, 90, 100, 110, 120, 130, 140	-
Ryningsnäs	Wind speed	40, 59, 80, 98, 120, 137.7	-
	Wind direction	40, 59, 80, 98, 120, 137.7	-
	Temperature	40, 59, 80, 98, 120, 137.7	-
	Pressure	-	-
	Relative humidity	-	-

Table 1. Site instrumentation with measurement heights at each site. The removed quantities are explained for the individual sites in Section 3.1.

from the construction of nearby wind farms. The measurement data from all sites was provided and analyzed in the form of time-stamped 10-minute averages. At the FINO sites and at Ryningsnäs, the wind speed heights were for visualization purposes named and visualized according to their nearest number divisible by 10, since some measurements had slight offsets (i.e 32 is mentioned as 30, 51 as 50. See Table 1 for exact measurements). Section 3.1 provides a more detailed description of each site.

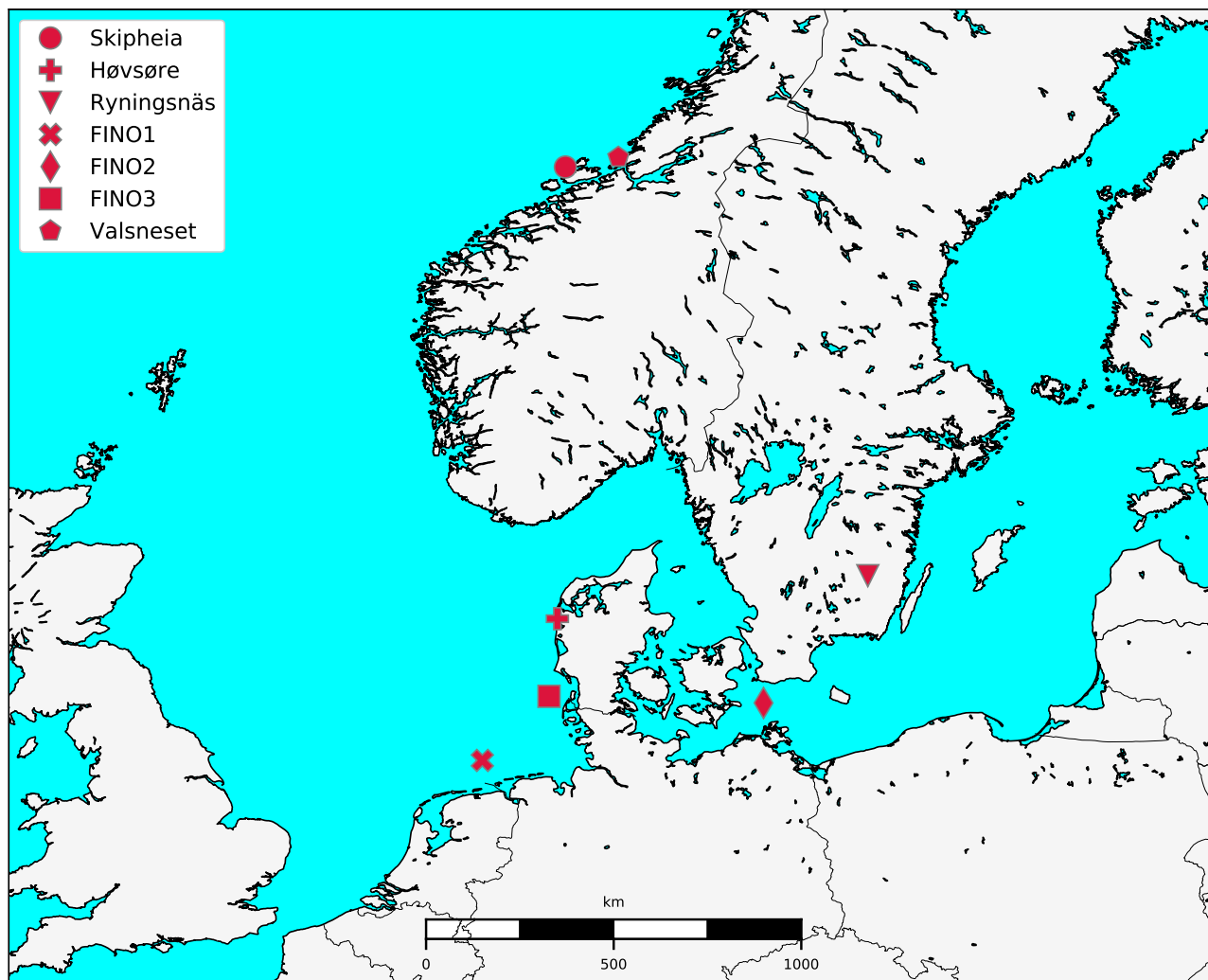


Figure 3. Map showing location of all sites used in this study.

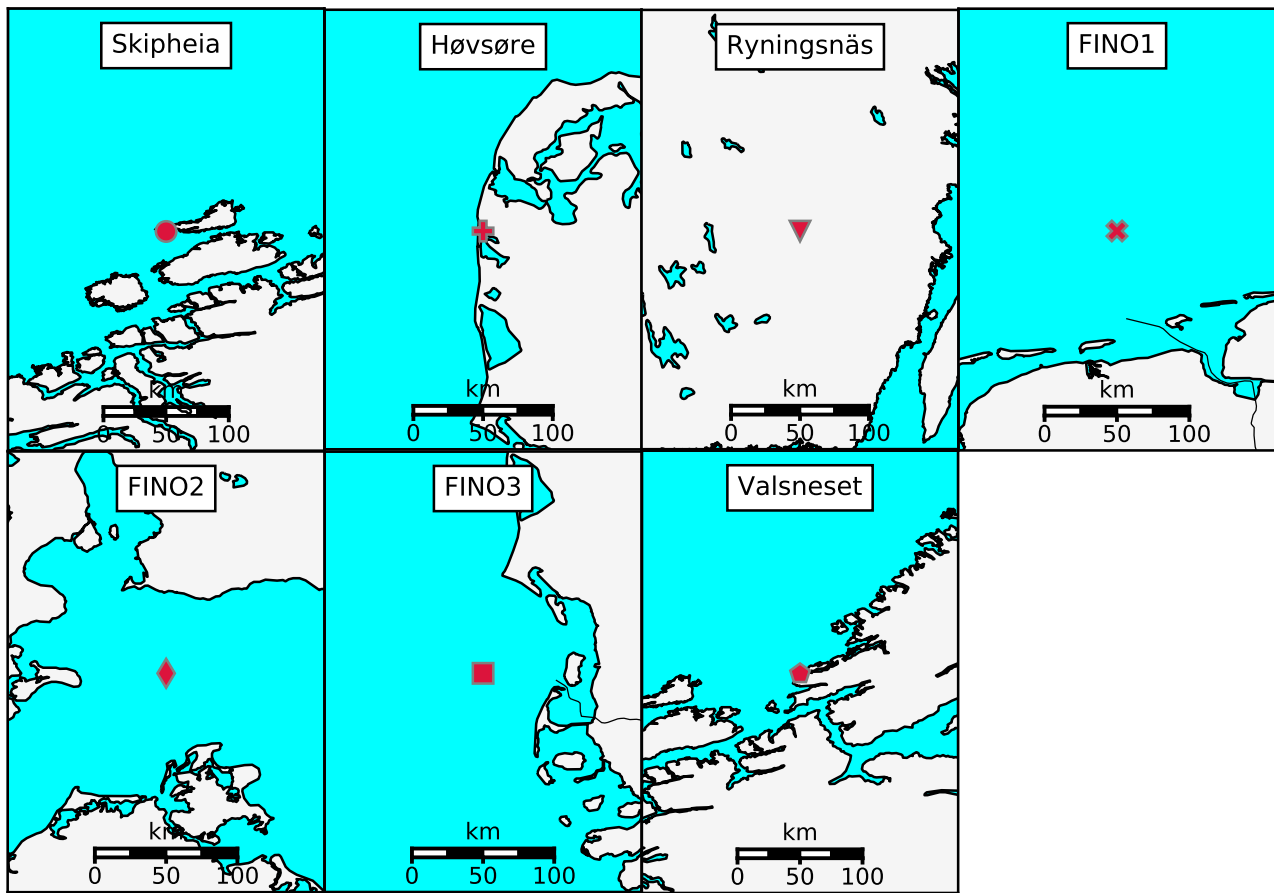


Figure 4. Close up of each site location.

3.1 Measurement sites

3.1.1 Skipheia (Frøya)

The Skipheia meteorological mast is operated by NTNU, and located at the western mid-Norway coast on the island of Frøya. The mast is located on land, approximately 20m above sea level and with the shortest distance to the ocean being 300m in the south/southwestern direction. The site experiences winds coming in from the Norwegian sea from the south-west, as well as onshore winds from the east. The site has 6 measurement heights from 10-100m of wind velocity, direction and temperature, and an additional near-ground temperature measurement. The data is available online, [where](#) more information can be found in Domagalski and Sætran (2019). The wind velocity is recorded by two 2D ultrasonic anemometers at each height mounted in two oppositely facing directions, the wind measurement not in the mast shadow was used at each time interval. The site does not record pressure or humidity, this was extracted from a nearby meteorological station for usage in the stability analysis.

Site	Time-period	Distorted sector	Removed data
Skipheia	14.12.2009 - 22.11.2014	-	69.22%
FINO1	01.01.2005 - 31.12.2006	-	30.01%
FINO2	01.01.2010 - 31.12.2012	-	11.02%
FINO3	01.01.2010 - 31.12.2012	-	26.96%
Høvsøre	01.01.2017 - 31.12.2017	290° – 45°	31.36%
Ryningsnäs	02.11.2010 - 04.02.2012	30° – 100°, 120° – 220°, 305° – 360°	60.11%
Valsneset	06.01.2014 - 22.09.2014	356° – 144°	67.56%

Table 2. Time period of data extraction, the distorted sectors at each site, and the percentage of data removed after filtering according to section 3.2.

The uncertainty of this is discussed in 3.3. The Skipheia site had notable downtime during the measurement campaign but the length of the campaign ensured data coverage across all times of year which had a recording time equivalent of well over one year of measurements.

3.1.2 FINO1

- 5 The FINO1 site is located in the German Bight (North Sea) approximately 45km north of the island of Borkum. The distance to shore varies largely with direction as seen in Fig. 3. Further information regarding the FINO1 site and instrumentation can be found in FINO1 (2019).

The FINO1 site has a research mast that is highly equipped with both temperature, wind speed and wind direction measurements. The cup anemometer measurements used in this study measure the wind speed at 8 heights from 30-100m, which are
10 mounted on one boom of length 3.0-6.5m at each height, and the booms are mounted in the directional sector 135° – 143°. The top anemometer is mounted on top of the mast in a lightning protection cage. The relative humidity measurements at z=42m and 72m, as well as the pressure measurement at z=92 had large data gaps and were not used for the entire study (see Table 1). The FINO1 mast has been shown to be prone to mast speed-up effects (Westerhellweg et al., 2012), the handling of this issue is discussed in section 3.2.1.

15 3.1.3 FINO2

The FINO2 site is offshore, located in the southwestern part of the Baltic Sea approximately 33km north of the German island of Rügen. The site experiences a mixture of fetch distances, being located within the triangle of Denmark in the west, Sweden in the North and Germany in the south. Cup anemometers measure the wind speed at 8 heights from 30-100m, and from one direction at each height (180°). The top anemometer is mounted on top of the mast in a different fashion to the other wind
20 speed measurements. The data set had few gaps [an-and](#) a high availability which can be seen in Table 2. Further information regarding the FINO2 site can be found in FINO2 (2019).

3.1.4 FINO3

The FINO3 site is located north of FINO1 in the German Bight (North Sea), approximately 80km west from the German island of Sylt. The site is instrumented with several booms to account for flow distortion, however not at all heights. Wind speeds recorded on booms in the direction 345° were used for all 8 measurements heights from 30-100m for consistency. At 5 FINO3 the temperature at $z=95\text{m}$ was found to be missing when downloading the data regardless of the period chosen, and was therefore not used in the final analysis. Further information regarding the FINO3 site can be found in FINO3 (2019).

3.1.5 Høvsøre

The Høvsøre site is located at the west coast of Denmark in the coastal farmland of west Jutland. The site is located in a flat area and homogeneous area, the surrounding features include the village of Bøvlingbjerg approximately 3km southeast, 10 the North Sea coastline with a sand embankment 12m high 1.7km west, and the Nissum Fjord 800m to the south. The site conducts tests on several masts and turbines, and the measuring mast used in this study is located directly south of a row of 5 turbines which are aligned in northern direction, and each of these turbines is additionally paired with a power mast located 200m west of it (Smith et al., 2006). The measurements used in this study are recorded by a meteorological mast where the wind velocity is recorded at 6 heights from 10-116.5m (see Table 2). The cup-anemometers and wind vanes are all installed 15 on south facing booms, thus making the mast distortion in the same direction as the turbine wake influenced region. A 115° sector was excluded to avoid turbine distortion, as well as distortion due to the power masts. This was a conservative approach in comparison to the recommended practice (IEC, 2017) and the common practice when analyzing the Høvsøre data which is to disregard mast effects (Peña et al., 2016). Further information on the site as well as results on 10 years of measurements at the Høvsøre site has been published by Peña et al. (2016).

20 3.1.6 Ryningsnäs

Ryningsnäs is a forested location in Sweden, approximately 30km inland from the Swedish southeastern coast (Arnqvist et al., 2015). The terrain in the region is mostly flat with mild variations, due to forestry and natural variations the landscape is however not completely homogeneous. The measurements are conducted through equipment installed on a 140m high mast located in the northwestern corner of a 200x250m clearing. The wind velocity was recorded at 6 heights on the mast 25 by 3D ultrasonic anemometers. Two turbines are present at the site approximately 200m from the mast in the southern and northeastern direction respectively. The sectors affected by the nearby turbines as well as the mast (mast effects were observed) were removed in the analysis, the sectors are given in Table 2. The pressure and relative humidity were not measured at the mast and an analysis of atmospheric stability at Ryningsnäs was therefore not conducted. Further information on the Ryningsnäs site is given by Arnqvist et al. (2015).

3.1.7 Valsneset

The Valsneset site is located northwest of Trondheim (Norway) on the peninsula of Fosen. The site is situated in immediate vicinity to the Norwegian Sea in the north and west, and with a mixture of smaller and bigger rocks as well as sea in the south and east. The data used originates from a Lidar measurement campaign which ran for 10 months, and measured wind speeds at 11 heights of 10m-increments from 40-140m using the Leosphere WINDCUBE V2. The LiDAR has a measurement frequency of 1 Hz, a velocity accuracy of 0.1 m/s and a directional ~~accuracy~~ accuracy of 2°. The data availability was set to a requirement of >99% in each 10-minute recording interval to ensure correct 10-minute averages. The lack of temperature measurements prohibited a stability analysis at Valsneset. The site has several nearby wind turbines restricting the wind sector analyzed (see Table 2) which was removed following the recommendation of IEC (2017). A more detailed description of the Valsneset site is given by Bardal et al. (2015).

3.2 Data filtering

For all sites, the time series of the 10-minute averaged data was filtered to remove any non-physical measurements as well as wind data from distorted directional sectors if the site exhibited wind distortion. Non-physical measurements entailed measurements which were artificially high or low compared to their typical range. In addition the FINO1, FINO2, FINO3 and Ryningsnäs data sets were obtained with attached quality tags at each time-level, any data entry tagged as poor was therefore removed. The distorted sectors of a site are described in their respective site section and an overview is provided in Table 2. The effect of mast distortion is discussed in Section 3.2.1.

After the tagging of poor measurements, the data removal was done as follows: if any measurement (direction, velocity, temperature, pressure, relative humidity) was missing due to downtime, from a distorted direction, found to be non-physical or tagged with a poor quality, all data from this 10-minute interval was removed and all measurements within this 10-minute average was therefore discarded. Some measurements at FINO1 and FINO3 did however have longer periods of downtime which impacted the filtering to such a degree that they had to be removed, an issue which was similarly encountered by Argyle and Watson (2014) at FINO3. The removal of a quantity was only done if the measurement was not a wind speed measurement, and if the same quantity was available at other heights so that its removal did not restrict any additional analysis. The removed quantities are given in Table 1. No filter was set with regards to minimum velocity of the data, or to the standard deviation of a 10-minute averaged quantity. This was done intentionally to avoid the results being artificially affected by these filters, which was also done in the similar study by Kettle (2014).

3.2.1 Filtering mast distortion

Wind measurements from meteorological mast may from certain sectors be affected by the the mast itself, a phenomenon called mast distortion. A common way of circumventing this is to record the wind speed on booms positioned in opposite directional sectors such that there is always a direction of measurement not impacted by mast distortion. This method was enforced at Skipheia, which had wind velocity measurements in two opposite directions at all measurement heights. At Høvsøre the mast-

distorted sector coalesced with a turbine-distorted sector and was subsequently removed. The Ryningsnäs data was recorded by ultrasonic anemometers which were found to show mast distortion effects, the mast-distorted sector was therefore removed. As the Valsneset data was measured by a Lidar device a mast-distortion analysis was not necessary.

5 The data from the FINO sites includes mast corrected wind speeds based on a uniform ambient flow correction (UAM) algorithm (Westerhellweg et al., 2012), mast corrected wind speeds were however only available at all heights at the FINO2 site. The analysis in this study was conducted on both the mast-corrected and non-corrected wind speeds at FINO2, as well as both including and excluding the mast-distorted sectors at all FINO sites. The results were found to be similar in all cases, thus no mast distortion filtering was employed. The same conclusion was drawn by Kettle (2014) when studying local maxima at FINO1.

10 3.3 Atmospheric stability calculation

A part of this study includes the investigation of the correlation between atmospheric stability and abnormal vertical wind profiles. The stability analysis was conducted using the Richardson number (Arya, 1988) to calculate the Obukhov length and subsequently dividing the occurrences into the 5 stability classes (very stable, stable, neutral, unstable, very unstable) using Obukhov length bins given by Bardal et al. (2018). The Richardson method was used for stability calculation, which excluded Ryningsnäs and Valsneset from the stability analysis due to lack of measurements. The remaining sites were however found to sufficiently describe effect of atmospheric stability on abnormal vertical wind profiles. At sites where the pressure or relative humidity were only available at one height they were assumed constant. When relative humidity was available at two heights but not the height of the temperature measurement it was linearly interpolated. The effect of varying the relative humidity was tested and did not change the conclusions of the study but may be a source of uncertainty in the stability analysis, especially during neutral conditions (Peña et al., 2008). The effect of only having a pressure measurement at one height was tested and found to be minimal, the same conclusion was drawn by Argyle and Watson (2014).

For the offshore sites the gradient Richardson formulation was used due to low availability of sea temperature measurements, while for the onshore sites near-ground measurements enabled use of the bulk Richardson number formulation. While the gradient method provides a more correct description of the dynamics of the boundary layer, it requires careful calibration of the instrumentation. The gradient method is due to the postulated thermal layering of the marine atmospheric boundary layer (MABL) also found by Argyle and Watson (2014) to be dependant on the measuring heights used. ~~There is therefore~~ At the offshore sites, the following heights were used in the stability calculation: 50m and 70m at FINO1 and FINO2, and 30m and 55m at FINO3. At the onshore sites the following height was used in addition to the surface temperature: 40m at Skipheia, and 100m at Høvsøre. These heights were chosen due to high data availability, and where possible the main correlations between atmospheric stability and wind profile inflections have been cross-checked using different stability measurement heights. The cross-reference was found to strengthen the main findings related to atmospheric stability. There is nonetheless a degree of uncertainty related to the stability analysis, at several sites the stability distribution was therefore compared to previous studies and showed reasonable agreement (Høvsøre: Peña et al. (2016), Skipheia: Bardal et al. (2018), FINO1 and FINO3: Argyle and Watson (2014)).

	No maximum	1 maximum	2 maxima	3 maxima	1 minimum	Reversed
Skipheia						
Number of cases	49 855	26 695	3 161		2 402	750
Percentage	60.17%	32.22%	3.81%		2.90%	0.90%
Høvsøre						
Number of cases	30 195	5 139	367		147	53
Percentage	84.11%	14.31%	1.02%		0.41%	0.15%
Ryningsnäs						
Number of cases	22 574	2 649	267		115	10
Percentage	88.13%	10.34%	1.04%		0.45%	0.04%
FINO1						
Number of cases	16 732	34 884	19 041	737	1 823	361
Percentage	22.74%	47.41%	25.88%	1.00%	2.48%	0.49%
FINO2						
Number of cases	47 236	58 267	24 631	3 522	5 514	1 138
Percentage	33.67%	41.53%	17.55%	2.51%	3.93%	0.81%
FINO3						
Number of cases	38 718	47 685	25 220	1 872	1 283	490
Percentage	33.59%	41.37%	21.88%	1.62%	1.11%	0.43%
Valsneset						
Number of cases	7 050	3 561	758	83	404	239
Percentage	58.27%	29.43%	6.26%	0.69%	3.34%	1.98%

Table 3. Occurrence of different profile categories at all sites. Blank spaces indicate that the site had too few measurement heights for the profile category to be possible.

4 Results

To illustrate the variation in the 10-minute averaged vertical wind profile, a selection of arbitrary profiles from FINO2 are plotted in Fig. 2. The profiles clearly illustrate that the 10-minute averaged wind profile does not necessarily conform with the shape of neither the power law nor the logarithmic law. Some profiles represent instances where the wind increases with height as expected, a significant amount of the profiles do however exhibit unexpected traits of singular or multiple local maxima. Figure 2 clearly demonstrates the importance of resolving issues associated with the vertical wind profile description.

The quantity in occurrence of the different profiles categorized by the number of local maxima is in this study the primary indicator of the in-applicability of the commonly used wind profile formulations. The percentage-wise and total occurrence of the different profile categories is presented in Table 3 and as a histogram in Fig. 5. The blank spaces indicate that the site has too few measurement heights to experience such a number of local maxima (also referred to as 'kinks' or 'inflections').

Valsneset is the only site which had enough measurement heights to record instances of 4 local maxima, the occurrence was however as low as 0.03% (4 cases) and is excluded from Table 3.

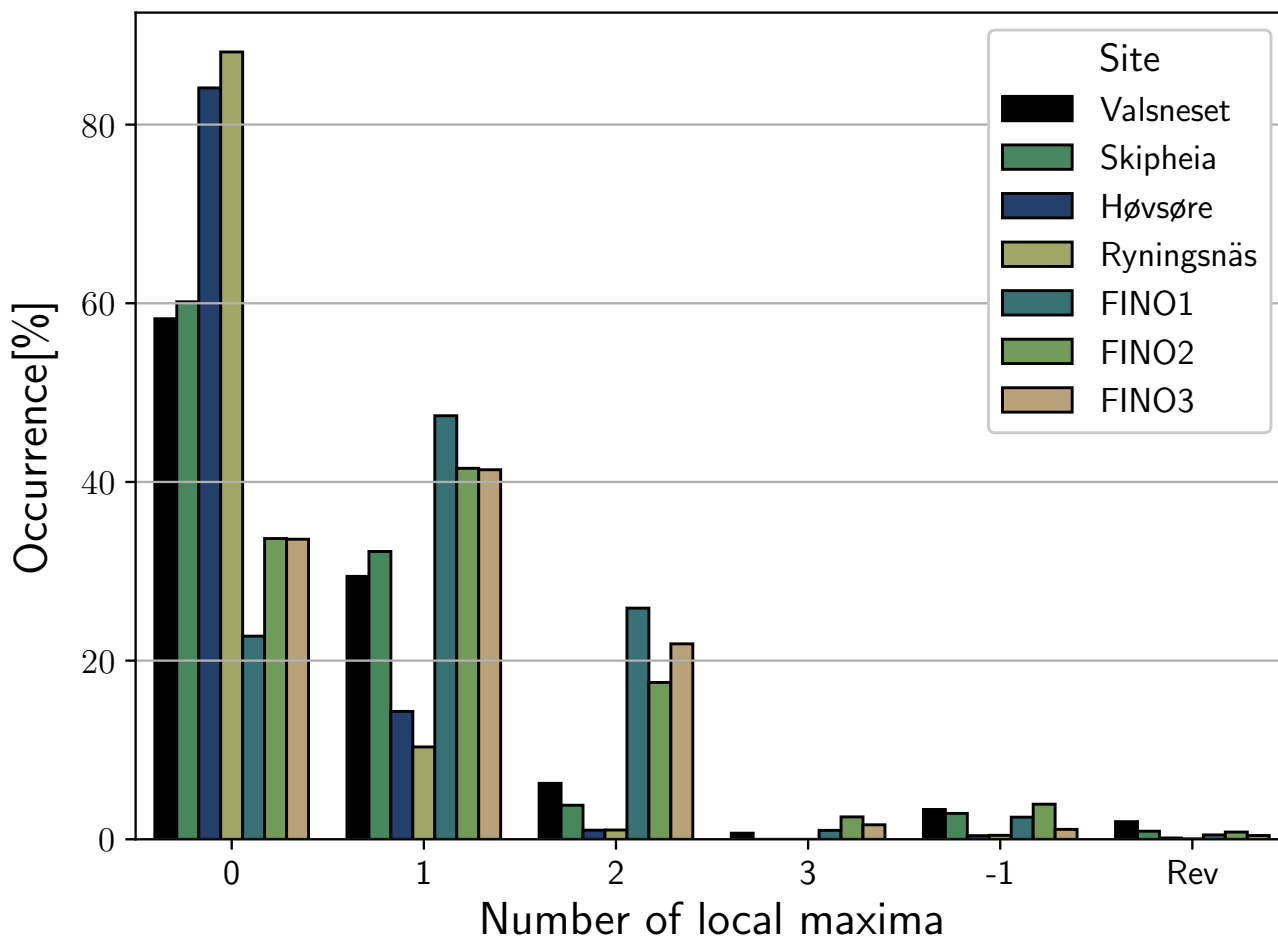


Figure 5. Histogram of profile categories occurrence by number of local maxima.

The results reveal that offshore sites are most prone to abnormal vertical wind profiles and therefore have the lowest occurrence of the expected 0-inflection vertical wind profile. At the offshore sites FINO1, FINO2 and FINO3 profiles are found to be predominantly abnormal and profiles exhibit inflections or a reversed profile in 77.26% of profiles at FINO1, 66.33% at FINO2 and 66.41% at FINO3. The onshore occurrence of abnormal profiles is found to scale inversely with the distance to shore, and the two coastal sites Skipheia (39.83%) and Valsneset (41.73%) therefore both show a higher occurrence of abnormal profiles amongst the onshore sites. This decreases for the semi-coastal site Høvsøre (15.89%) and abnormalities are most rare for the far-inland site Ryningsnäs (11.87%). Although the three FINO sites have different fetch distances ranging from 30-80km and

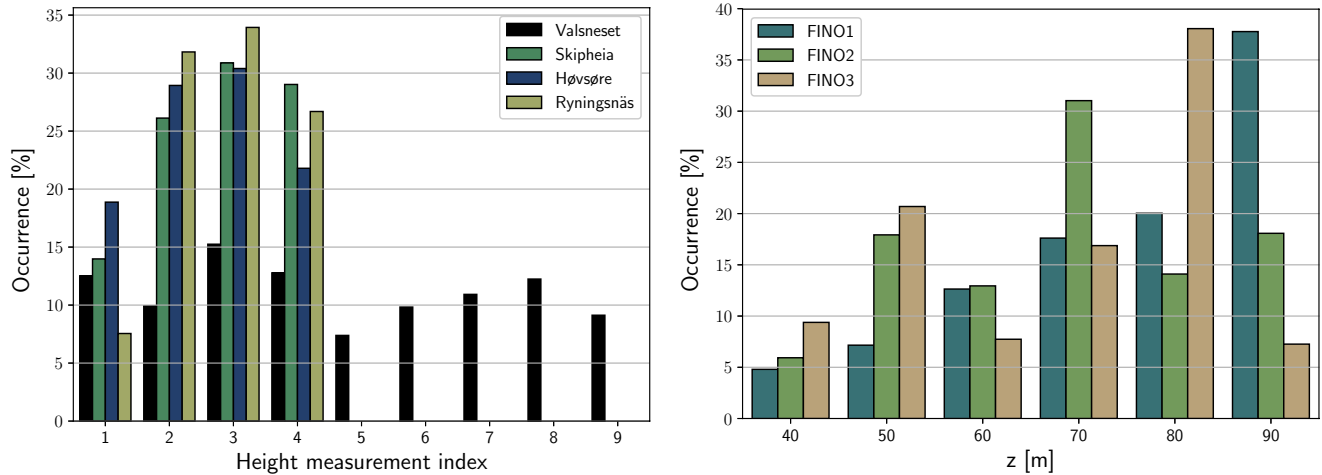


Figure 6. Histogram showing the height at which the inflection occurs for the 1-inflection profiles at onshore and offshore sites. In the left figure the x-axis is the height index, with 1 being the second measurement height. Table 1 provides the measuring heights used at all sites.

being are located in different offshore conditions (North/Baltic Sea) this is not observed in the results, and analysis of several years of data from the sites did not reveal a correlation between the fetch of a site and the occurrence of local maximum in the vertical wind profile. As the North Sea and Baltic Sea, where the FINO sites are located, are both to a varying degree enclosed by land it is unclear whether this result holds for winds which are clear of coastal effects.

5 When abnormalities are present they are predominantly in the form of 1 local maximum. The 1-inflection profiles are found to occur most often at FINO1 (47.41%), with FINO2 (41.53%) and FINO3 (41.37%) showing slightly lower and similar relative occurrences. The 1-inflection profiles are also the dominant abnormal profile type onshore, being present in 29.43% of profiles at Valsneset, 32.22% of profiles at Skipheia, 14.31% of profiles at Høvsøre and the lowest occurrence of only 10.34% of profiles at Ryningsnäs. Here a scaling was found, namely that, of the onshore sites, the coastal sites have a higher amount of profiles with multiple inflections, while further inland the 1-inflection category becomes more common among the abnormal profiles.

10 The results also reveal that the three offshore FINO-sites exhibit the most amount of profiles with 2 local maxima. All FINO sites have a percentage-wise higher occurrence of 2 local maxima (FINO1: 25.88%, FINO2:17.55%, FINO3: 21.88%) than the coastal Valsneset site (6.26%), even though the amount of measurement heights is 11 at Valsneset and 8 at the FINO sites which makes a profile with several local maxima more probable at Valsneset. This clearly indicates that local maxima are more prominent at offshore sites than they are onshore. The 3-inflection profile occurs rarely and therefore does not have large implications for wind energy applications. It is also mentioned here that the results of FINO1 are as expected very similar to the results found by Kettle (2014) who studied local maxima in the VWP for the year 2005 at FINO1.

15 The reversed and -1-inflection profiles also occur at all sites, but similar to the 3-inflection profiles their occurrence is too low to be very relevant for wind energy applications. It should however be mentioned that the occurrence of these categories is linked; a site with a higher amount of reversed profile is also seen to have a higher occurrence of -1-inflection profiles.

20

From these results it is clear that abnormalities are most common offshore, and are found to decrease with an increasing surface roughness. For onshore sites, locations in direct proximity to the coast (such as Skipheia and Valsneset) are found to be much more prone to abnormalities than sites only a few kilometers inland (Høvsøre). The increased surface roughness associated with the forested site Ryningsnäs results in higher degrees of turbulence which leads to large mixing and less abnormal profiles. This is seen to correspond to a low occurrence of inflected vertical wind profiles.

4.1 The effect of using only 4 measurement heights

Evidently the probability that the vertical wind profile contains one or more local maxima increases with the number of measurement heights. In addition the varying height increment between measurements can cause differences in the occurrence of local maxima. The vertical wind profiles were therefore analyzed using only the heights $z=(40\text{m}, 60\text{m}, 80\text{m}, 100\text{m})$, which are approximately common for all sites except Skipheia. At Skipheia the closest replication of this was used, namely $z=(25\text{m}, 40\text{m}, 70\text{m}, 100\text{m})$. With 4 measurement heights the possible profile categories are: 0-inflection, 1-inflection, -1-inflection and reversed.

Inflections:	0	1	-1	Rev.
Skipheia	67.11%	26.89%	3.36%	2.64%
Høvsøre	87.42%	9.24%	1.71%	1.63%
Valsneset	76.00%	15.95%	2.99%	5.06%
Ryningsnäs	94.14%	5.11%	0.58%	0.17%
FINO1	46.57%	40.34%	10.72%	2.36%
FINO2	58.71%	27.69%	9.31%	4.29%
FINO3	58.75%	25.83%	12.54%	2.87%

Table 4. Local maxima results if all sites are restricted to only 4 measurement heights. At all sites except Skipheia, the common heights $z=(40\text{m}, 60\text{m}, 80\text{m}, 100\text{m})$ were used, at Skipheia, $z=(25\text{m}, 40\text{m}, 70, 100\text{m})$ were used.

The results in Table 4 confirm that offshore sites ~~to a larger degree~~ experience local maximum in the wind profile [to a larger degree](#) than onshore sites. Using only 4 heights results in an increase in the 0-inflection profile at all sites, but the differences between the sites remains the same and similar conclusions on the abnormal profile occurrence can be drawn. Since the use of all measurement heights does not alter the main conclusions all heights were used for the remainder of the study.

4.2 Height of local maximum

The height at which the wind profile deviates from its expected shape is essential when assessing the impact the inflected profiles have on a wind turbine. Local maxima at wind turbine hub heights were shown by Wagner et al. (2009) to significantly impact the power output due to the impact the negative shear has on the available energy across the rotor area. The inflections

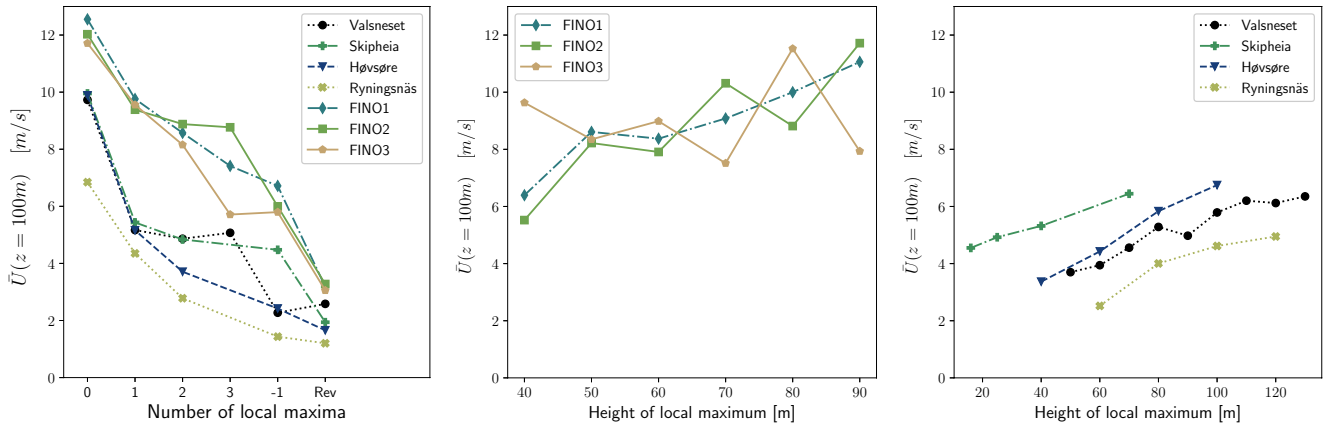


Figure 7. Left: Mean wind speed at $z=100m$ of different profile categories. Middle: Mean wind speed at $z=100m$ for offshore sites, with VWP maxima at different heights. Right: Mean wind speed at $z=100m$ for onshore sites with VWP maxima at different heights. Similar results were found when using the lowest wind speed measurement height at each site.

can however also have positive consequences as Gutierrez et al. (2017) found the negative shear in the top half of a low-level jet to dampen motion, forces and moments acting on the turbine tower and nacelle.

4.2.1 Onshore sites

The left histogram in Fig. 6 shows the height occurrence of local maximum at the onshore sites. Comparison of the onshore maxima heights is complicated due to the variation in the number of measurement heights and the difference in height increments, and was therefore visualized as a function of the height index of the local maxima.

At all onshore sites except Valsneset the occurrence of an inflected profile is found to increase with the height of the inflection up to the second highest measurement height. From the second highest to the highest point, all these sites show a slight decrease in occurrence.

At the coastal site Valsneset the variation of local maxima occurrence stands out in comparison to the other sites. At the lower heights of $z=(50m, 60m, 70m, 80m)$ the occurrence seems arbitrary and evenly distributed. After this the occurrence of local maxima decreases for $z=90m$ before showing the same monotonic increase in occurrence with height followed by a top height decrease as was found at the other onshore sites. The twofold variation found at Valsneset is not entirely clear, but could be caused by a transition from the surface layer to the Ekman layer at an intermediate height, which may not be visible at the similar site Skipheia, due to lower measuring heights. The aforementioned top height decrease is also visible at Valsneset but is not due to mast speed up since the measurements were performed by a Lidar device. The cause of this result is not entirely clear but at the masted sites speed-up effects can not be excluded as the cause.

4.2.2 Offshore sites

The right histogram in Fig. 6 shows the height of the local maximum at offshore sites for the 1-inflection case. The results show that inflections occur at all heights, but the percentage of occurrence at each height varies to a larger extent than onshore. At FINO1 this variation is however not present, and the occurrence is seen to consistently increase when the inflection occurs higher in the profiles. At FINO2 the profiles are most commonly inflected at the third highest inflection height $z=70\text{m}$, and a slight general increase in occurrence with height is visible. The profiles at FINO3 show the largest variation, and are found to be most commonly inflected at the second uppermost height $z=80\text{m}$ but least commonly inflected at the top height $z=90\text{m}$.

The variation in inflection height occurrence at the offshore sites is partially explained through smaller height increments between measurements ($\Delta z \approx 10\text{m}$). The occurrence at each height is however also found to be strongly coupled with the atmospheric stability, ~~as the heights with the highest occurrence of inflections are the heights with the highest amount of very unstable atmospheric conditions~~ at the time of profile inflection. This is discussed in Section 4.4.2 which addresses the changes in stability distribution when inflections occur at varying heights. The increased occurrence of local maxima at higher elevations should be a concern as these elevations are within common rotor swept areas of modern turbines and can have a direct impact on the available energy in the wind.

4.3 Correlation to wind speed

It is of interest to describe the atmospheric conditions which cause abnormal vertical wind profile development. The wind speed is a vital part of the atmospheric conditions, as well as being the source of energy in wind turbine power generation.

4.3.1 Wind speed relationship to profile categories

The left plot in Fig. 7 shows that the mean wind speed is decreasing with an increasing number of local maxima in the vertical wind profile and at its lowest during instances of a reversed profile or a -1-inflection profile. Such profiles are however rare instances which only comprise a few percent of the profile cases, and their low wind speeds make them even less relevant for wind energy applications. In the remaining profile categories, the mean wind speed is for the offshore sites well above a typical cut-in speed of 4-5 m/s, making them relevant in wind energy extraction (Cooney et al., 2017). At the coastal sites Skipheia and Valsneset the mean wind speed of the abnormal profiles lies in the approximate region of typical cut-in wind speeds, at the semi-coastal site Høvsøre and the inland forested site Ryningsnäs the mean wind speed in the abnormal profiles is however seen to decrease to below typical cut-in speeds. A further analysis showed that the range of wind speeds associated with a profile category only changes slightly from the 0-inflection to the 1-inflection profiles, and at the offshore sites only slightly from the 1-inflection to the 2-inflection category. This entails that the decrease in mean wind speed is predominantly due to the peak in distribution being shifted to lower velocities. Therefore, although many of the abnormalities at the onshore site occur below cut-in wind speeds, there are still instances where these inflections are relevant for wind energy extraction. At the offshore and coastal sites the mean wind speed is higher and most of the inflected profiles will have an impact on the available energy. It is also worthwhile to consider that when Lange et al. (2004) studied the effect of erroneous offshore vertical wind extrapolation

methods on the error in predicted power output at a hub height of $z=50\text{m}$ the errors were largest at wind speeds between 5-9 m/s. Therefore, even if an inflected profile has a wind speed only slightly above cut-in wind speed it is still relevant for wind engineering purposes.

4.3.2 Wind speed relationship to maxima at different heights

5 The wind speed at $z=100\text{m}$ as a function of inflection height is also shown in Fig. 7. At the onshore sites (right plot, Fig. 7) a maximum at a higher altitude is seen to correspond with higher wind speeds, with all sites exhibiting a somewhat consistent increase in mean velocity with inflection height. At the offshore sites (middle plot, Fig. 7) the results shows an increase in wind speed with height, there is however larger variation between the heights. The variation is especially prominent at FINO3, and slightly prominent at FINO2. The variation was found to be partially but not entirely caused by the smaller height increment of $\Delta z \approx 10\text{m}$ at the FINO sites. The complete picture of why this is occurring is strongly coupled to atmospheric stability, and specifically the ~~the~~ higher degree of very unstable inflections found at the offshore FINO sites. The inflections during very unstable conditions show significantly larger variation in ~~wind speed~~ the magnitude of the mean wind speed profile with a changing maximum height, which can be seen at FINO3 (the site with the largest variation) by the order from left to right of the profiles in the top right plot of Fig. 10 versus the bottom right plot of Fig. 10.

15 The general increase in velocity with maximum height may not have been expected if the inflections are assumed to be coupled with a boundary layer discontinuity which scales inversely with velocity. The surface layer depth is however mainly decided by the thermal state of the atmosphere, i.e the atmospheric stability, which is inherently coupled to the wind speed (Stull, 2017). As wind speeds increase the atmosphere is known to transition towards a neutral atmosphere where the surface layer height increases in comparison to stable conditions. The importance of this result therefore lies mainly in communicating
25 that higher altitude inflections could be a large concern for wind energy purposes since they occur at higher wind speeds and may therefore be coupled with stronger load and energy variations.

4.4 Correlation to stability

Atmospheric stability describes the vertical forces exerted on the parcels in the atmosphere due to temperature differences. Put simply, during stable conditions the surface is generally cooler than the air and the buoyant forces prevent vertical motion.
25 During unstable conditions the ground is generally warmer than the air, parcels rise and stronger turbulent mixing is observed. Neutral conditions entail a thermal equilibrium where parcels experience no vertical buoyant forces.

In this study the stability analysis was performed using a Richardson number formulation, and was not carried out at the sites Valsneset and Ryningsnäs due to lack of measurements. The forthcoming sections are therefore focused on the remaining sites, where FINO1, FINO2 and FINO3 are located offshore, Skipeia is coastal and Høvsøre is onshore/semi-coastal. The
30 employed method used in the stability analysis is discussed in Section 3.3.

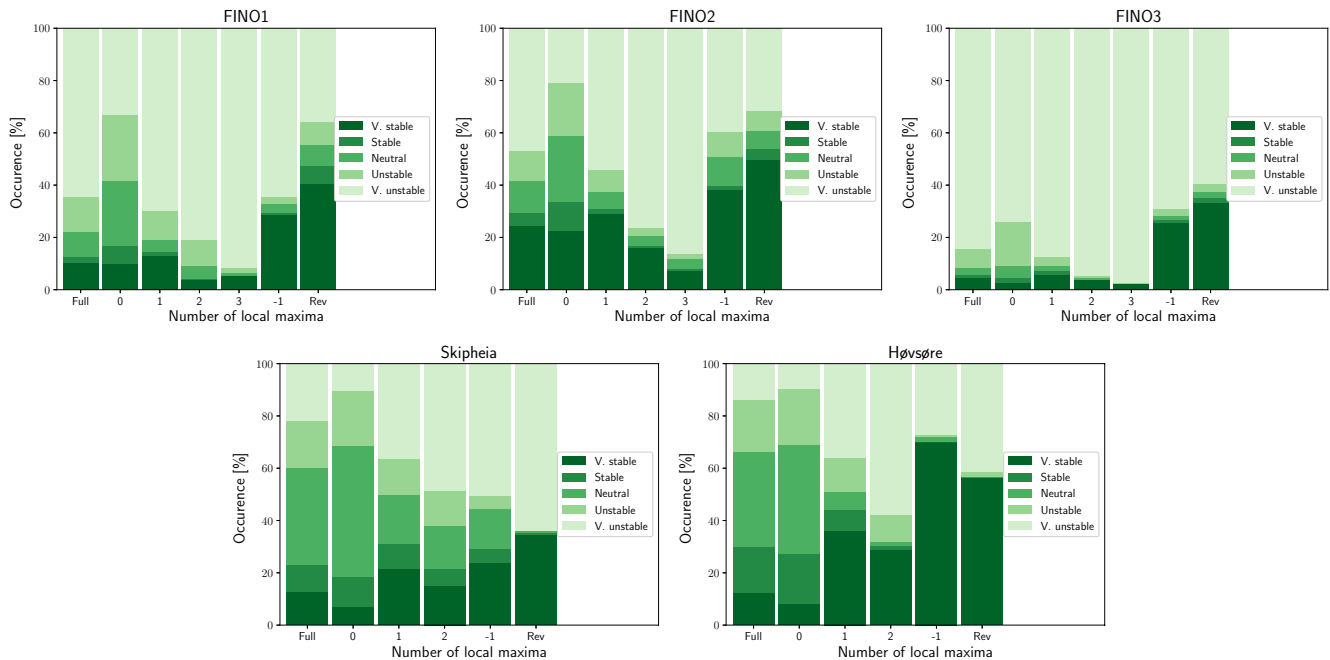


Figure 8. Stability distribution of profile categories at the 5 sites which had measurements enabling this analysis. Full indicates the entire data set with no abnormal profile categorization.

4.4.1 Stability distribution of abnormal profile categories

During the presence of local maximum in the VWP all sites shows an increasing occurrence of very unstable atmospheric conditions categorized by more vigorous turbulent mixing (Fig. 8). This increase grows with the number of inflections, meaning that 2-inflection profiles have a higher occurrence of very unstable conditions than the 1-inflection profiles. This is likely linked to the flat profiles caused by this mixing state, since the inflections need less 'disturbance' or severity during very unstable conditions in order to cause a maximum in an already flat development. The two onshore sites Høvsøre and Skipheia in addition show an increase in very stable conditions where turbulence is suppressed, during the presence of one or more local maxima. These increases are seen to lead to a decrease in neutral conditions, which aligns with the decreasing wind speed for inflected profiles seen in the left plot of Fig. 7 since neutral conditions are more common at higher wind speeds. The 0-inflection category unsurprisingly shows an opposite change in atmospheric conditions to that of the inflected profiles.

The reversed and -1-inflection profile categories can at all sites be seen to occur more commonly during very stable conditions. The results suggest this is due to the higher occurrence of very stable conditions at the low wind speeds under which these profile categories occur.

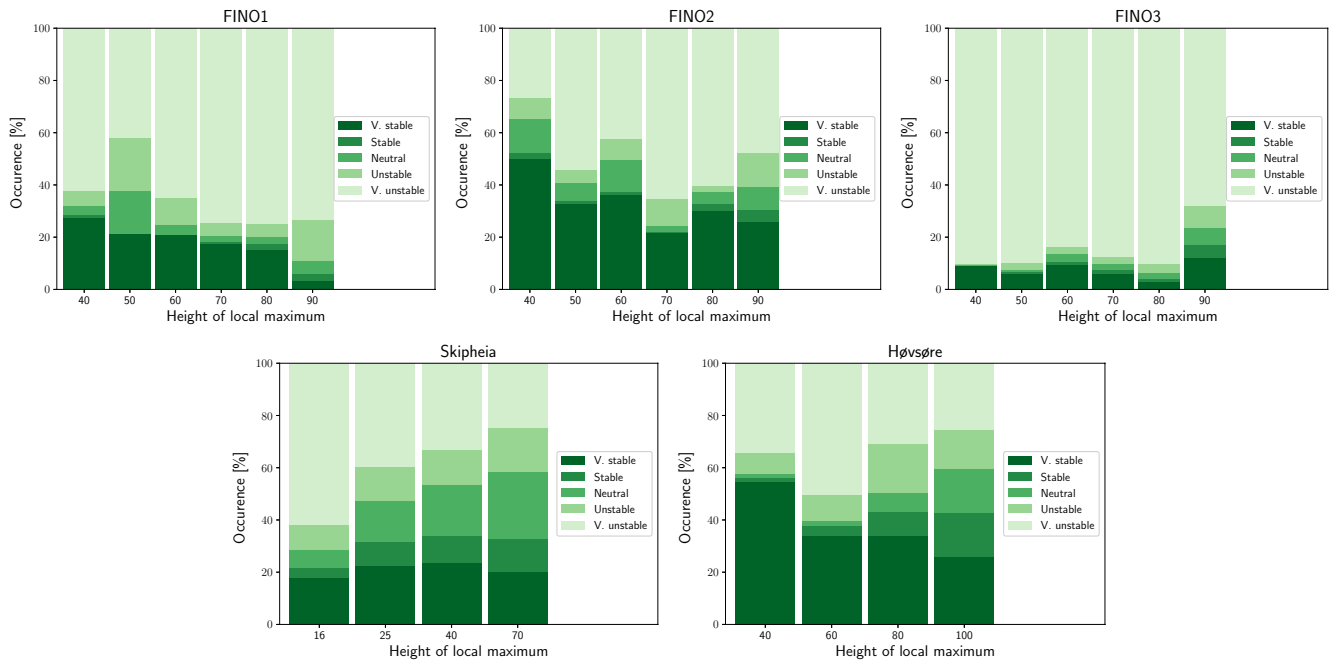


Figure 9. Stability distribution of 1-inflection profiles with varying height of inflection at the 5 sites which had measurements enabling this analysis.

4.4.2 Stability distribution with increasing maximum height

The atmospheric stability distribution for the 1-inflection profiles with a varying maximum height is shown in Fig. 9. Considering the offshore sites FINO1 and FINO2 first, the occurrence of a very stable atmosphere is higher when the maximum occurs at a lower altitude ($\approx 30\%$ and $\approx 50\%$ respectively), **but decreases and is superseded by** however when a maximum occurs at a higher altitude the occurrence of stable conditions is lower and instead very unstable conditions **as the height of the maximum increases becomes increasingly dominant**. At FINO1 this decrease is present at all heights, whereas at FINO2 the occurrence of very stable conditions increases again for $z=80\text{m}$ and $z=90\text{m}$, and there is also a slight increase in very stable conditions at FINO3 when inflections occur at $z=90\text{m}$. Shallow surface layers and internal boundary layers are usually coupled with very stable atmospheric conditions due to the negative buoyancy forces, the higher occurrence of very stable conditions during low-altitude inflections could therefore indicate that these inflections are offshore caused by a stable internal boundary layer formation, which is often coupled with a capping inversion where larger than expected wind speed gradients may be found (Lange et al., 2004). The results of Argyle and Watson (2014) suggested an IBL formation with a height of around $z=50\text{m}$ at FINO1 and FINO3, the higher occurrence of inflections during very stable conditions at lower altitudes supports the possibility of such an inversion.

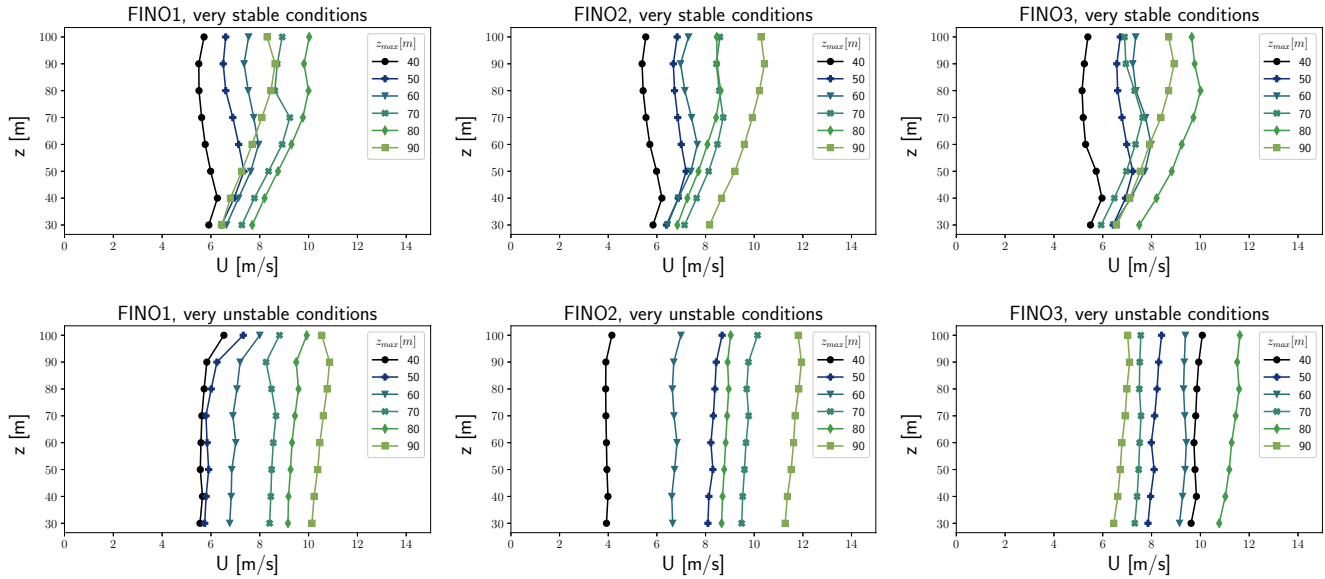


Figure 10. Mean 1-inflection velocity profiles at FINO1, FINO2 and FINO3 with maximum at different heights, during very stable and very unstable atmospheric stability. The neutral stability condition is not ~~show~~shown due to a low occurrence.

The results at FINO3 differ from the two other offshore sites. At FINO3 the atmosphere is predominantly very unstable regardless of inflection height (top right plot, Fig. 9). Although the predominance of very unstable conditions of FINO3 was also found by Argyle and Watson (2014), those results also indicated a higher occurrence of a stable atmosphere when using temperature measurements at higher elevations. The upper temperature measurement at FINO3 ($z=95\text{m}$) was however unavail-
 5 able in this study, the high sensitivity of the height occurrence to the atmospheric stability could therefore indicate that the FINO3 stability distribution depicts too large percentages of very unstable conditions, and too low percentages of very stable conditions.

Onshore (Skipheia and Høvsøre) there is ~~a decrease in very unstable conditions as the inflection rises, contrary to the offshore results. Instead there is~~ an increase in neutral, slightly stable and slightly unstable as the inflection rises. Onshore the
 10 atmosphere is predominantly neutral ; when strong winds are present, sometimes stable/unstable but rarely very stable/unstable. Recalling that the wind speed at $z=100\text{m}$ increases with inflection height, the increase in neutral, ~~stable and slightly stable and~~ slightly unstable conditions at higher inflections height simply reflects the stability distribution associated with the wind speeds at which they occur.

The Høvsøre results additionally indicate that stable conditions cause inflections at lower altitudes, similar to the results
 15 found offshore. If analyzing the height at which inflections occur during very stable conditions, the lowest height $z=40\text{m}$ is the most common and the occurrence is found to monotonically decrease up to the highest inflection altitude of $z=100\text{m}$. This could indicate a shallow surface layer during very stable conditions at Høvsøre and possibly being a part of the explanation for the progressive deviations in wind speed above 50-80m found at the Høvsøre site (Gryning et al., 2007).

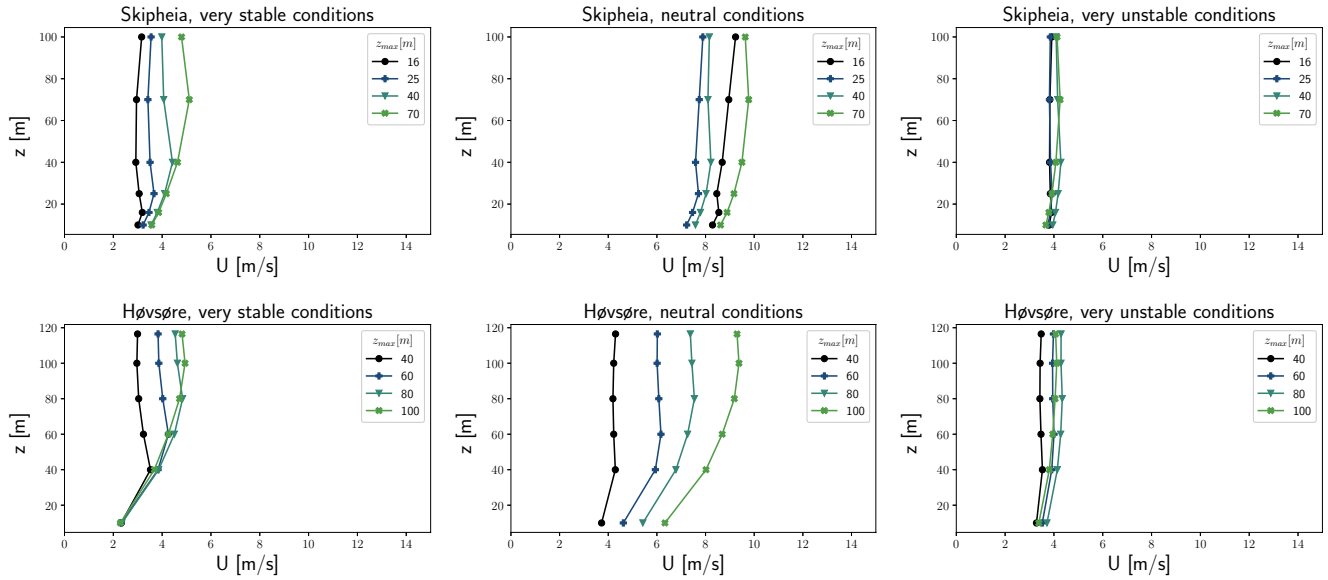


Figure 11. Mean velocity profiles at Skipheia and Høvsøre with maximum at different heights, during very stable, neutral and very unstable atmospheric stability.

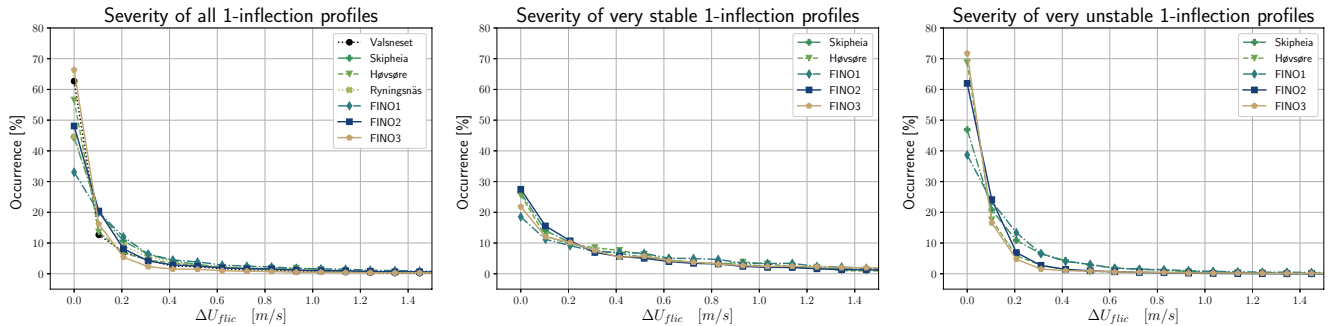


Figure 12. Inflection severity for 1-inflection profiles, $\Delta U_{flic} = U_{inflection} - U_{min \text{ above inflection}}$ [m/s]

4.4.3 The effect of stability on profile shapes

The impact inflections have on the difference between expected and actual rotor equivalent wind speed was assessed through studying the 1-inflection profile shapes with varying maximum height and atmospheric stability.

During neutral, stable and very stable conditions the inflections are found to have a more pronounced effect on the development of the vertical wind profile than during unstable/very unstable conditions (Fig. 10 and Fig. 11). Offshore, the very stably inflected profiles exhibit a decrease in wind speed over several height measurement measurement heights above the maxima

before the velocity profile reinstates a positive shear. When one additionally considers that MOST predicts largest wind speed gradients during very stable conditions, the very stable inflections evidently cause larger deviations from their predicted shape.

Very unstable conditions are contrary to the very stable profiles typically associated with low wind shear and a more uniform velocity profile both onshore and offshore, this is also reflected in the profile shapes seen in Fig. 10 and Fig. 11. Although profile inflections are not possible within the scope of MOST, a large amount of these inflections are too small to be a likely cause of large deviations between the predicted and actual wind profile shape. Previous studies confirm that MOST is satisfactory in predicting the vertical wind profile during unstable conditions (Argyle and Watson, 2014)). It is however seen that some of the offshore 1-inflection profiles, especially at FINO1 and slightly at FINO2, show signs of a speed-up effect at the uppermost height. The most likely cause of this is thought to be the systematic speed-up effects which have been shown to be present at FINO1. This explanation is assisted by recalling that FINO3 is equipped differently and thus shows less signs of speed-up effects.

Onshore at Skipheia and Høvsøre the neutral profiles (middle plots, Fig. 11) may be of larger concern than the very stably inflected profiles, since they occur more commonly and at higher mean wind speeds. The same can be said of the stable profiles, whereas the unstable and very unstable profiles with inflections have low shear, small inflections and occur at low wind speeds, making them less relevant.

The amount of inflected profiles which may have a significant impact on the power production deficit was analyzed by considering profiles with a mean wind speed at 100m above 5 m/s, replicating a conservative cut-in wind speed at turbine hub height. Assuming neutral, stable and very stable conditions to have the more severely inflected profiles, the following correlations are found: 16.8% of profiles are inflected under these conditions at FINO2, 10.0% at FINO1 and 3.7% at FINO3. Performing the same analysis at the coastal site Skipheia and the semi-coastal site Høvsøre, 10.43% of the inflected profiles at Skipheia fall within this category, and this sinks to 3.6% at Høvsøre. Offshore such profiles are predominantly occurring under very stable stratification, the coastal inflections are however more of a concern under weakly stable and near-neutral conditions.

4.5 Inflection severity

The inflection severity was analyzed in order to support the findings of the profile shapes presented in Section 4.4.3. The severity of an inflection was defined as the difference ~~in~~ between the wind speed at the point of the maximum and the wind speed at the point where the velocity profile retains its positive shear above the inflection ($\Delta U_{flic} = U_{inflection} - U_{min \text{ above inflection}} [m/s]$). The results shown in Fig. 12 reveal that ΔU_{flic} is typically small during unstable conditions which matches the flat velocity profiles described in Section 4.4.3. This may indicate that the very unstable inflections are to a larger degree caused by small arbitrary variations in the vertical wind speed which are possibly due to turbulent fluctuations. The very stable 1-inflection profiles are contrarily seen to have a much larger inflection severity at all sites, again showing that the very stable inflections are more critical in wind energy applications. By assuming an inflection is severe if $\Delta U_{flic} > 0.5$ the results show that, depending on the site, 9-25% of all 1-inflection profiles are categorised as severe. For the very unstable 1-inflection profiles only 3-14% of profiles are severe, and for very stable 1-inflection profiles as many as 35-48% of the inflected profiles are severely inflected.

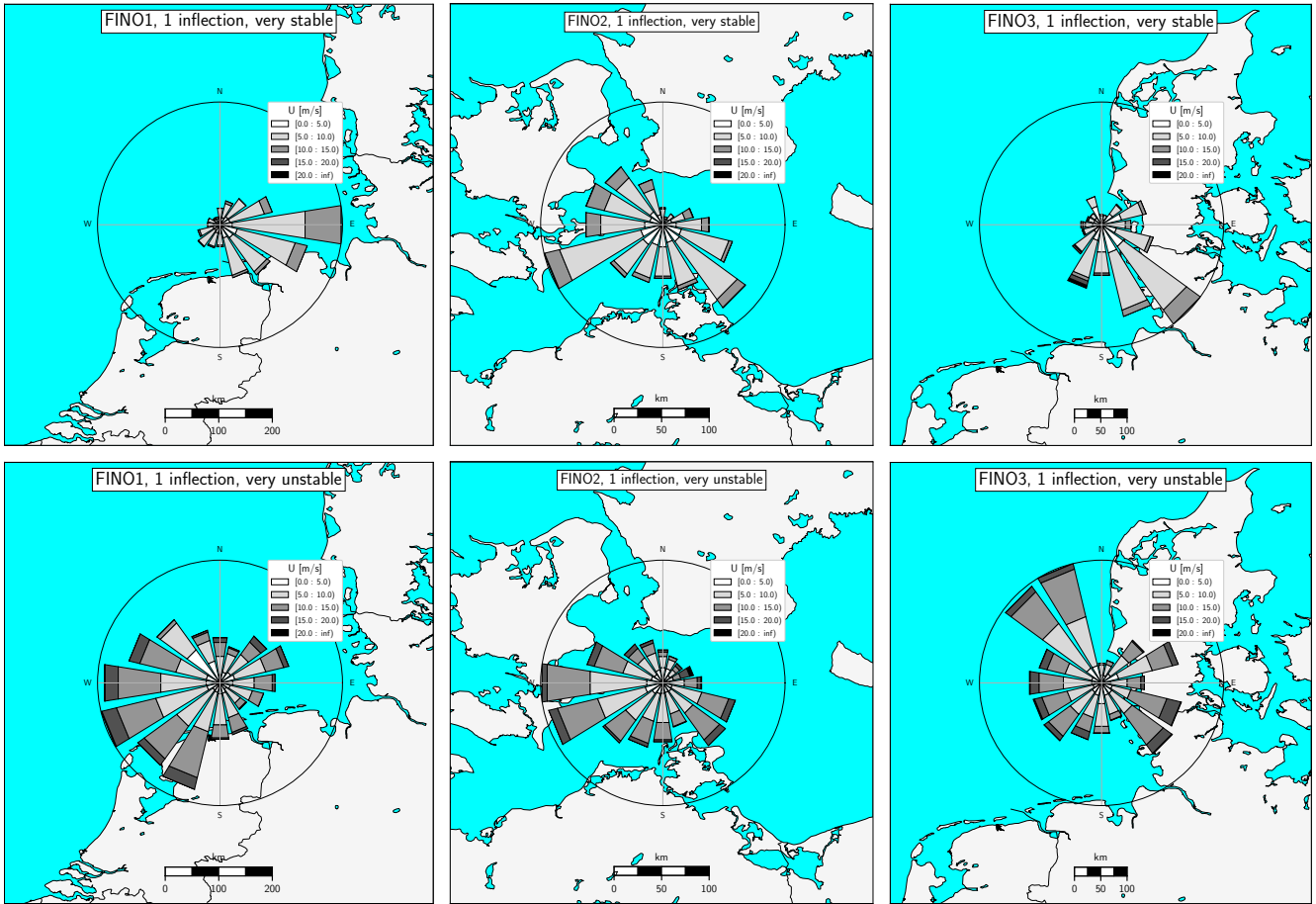


Figure 13. Wind direction of very stable and very unstable 1-inflection profiles at offshore sites. The wind roses are centered on the site location.

Although slight variations between sites are found the results clearly illustrate that once an inflected profile has been identified, the likelihood of a severe inflection is much higher during stable conditions.

4.6 Wind direction of inflected profiles

4.6.1 Offshore direction analysis

- The wind rose for the very stable and very unstable 1-inflection profiles is shown in Fig. 13. The neutral case was not shown for the offshore sites due to few occurrences.

At both FINO1 and FINO3 the inflected profiles during very stable conditions arrive from a sector of shorter fetch which was found to have a high occurrence of very stable winds at the respective sites. During very unstable conditions the inflected profiles arrive mostly from directional sectors with long fetch distances and the atmosphere is in these sectors predominantly

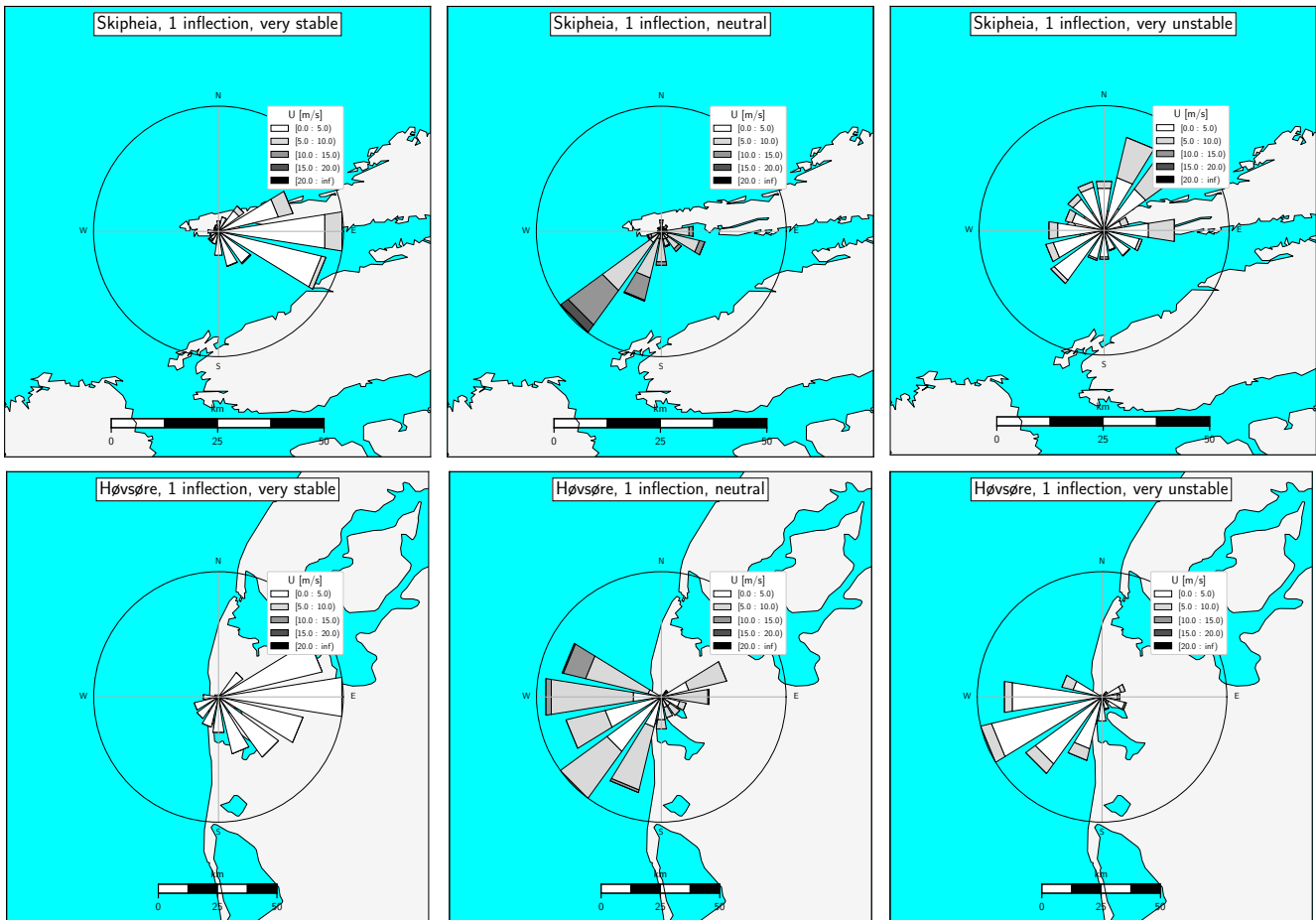


Figure 14. Wind direction of very stable, neutral and very unstable 1-inflection profiles at onshore sites. The wind roses are centered on the site location.

very unstable. This result strongly indicates that the inflections during very stable conditions are occurring due to coastal effects and possibly a stable capping inversion.

At FINO2 the very unstable and very stable 1-inflection profiles do not show distinct sectors of higher occurrence. The atmospheric stability occurrence is more evenly distributed at FINO2, this causes a more even directional spread of both the very stable and very unstable inflections. The FINO2 site is located in the Baltic Sea and is more uniformly engulfed by land than FINO1 and FINO3.

4.6.2 Onshore direction analysis

The directional distribution of the 1-inflection profiles categorized during very stable, neutral and very unstable conditions at the onshore sites Skipheia and Høvsøre can be seen in Fig. 14.

Both the coastal site Skipheia and the semi-coastal site Høvsøre show a stability-dependency on the direction of incoming 1-inflection profiles. At both sites, the directions which are dominant during very stable, stable and very unstable conditions are sectors at each site where these conditions dominate. At both sites this results in very stable inflections arriving from onshore, whereas neutral and very unstable inflections are arriving from directions of short fetch and offshore incoming flow. The neutral inflections occur at the highest wind speeds, and are seen to arrive from offshore at both sites. These inflections may be related to shallow surface layers arriving from the sea.

5 Summary and conclusions

The occurrence of abnormal vertical wind profiles has been investigated to survey the applicability of Monin- Obukhov similarity theory in short term time-averaged vertical wind profiles. Measurements of the 10-minute averaged wind profile **has** have been analyzed at seven sites up to a height of 100-140m depending on the site, where three of these are located offshore, two in coastal locations, one in a semi-coastal location and one is located inland surrounded by forest. Several years of data was available at most sites, enabling a thorough comparison of how the occurrence of abnormalities changes with site location. The measured vertical wind profiles have been categorized in terms of the number of exhibited local maxima which are not possible within Monin-Obukhov similarity theory. With this identification method, the expected profile through MOST is the monotonically increasing profile with 0 inflections.

The results reveal that abnormal profiles are most common offshore, where data from the offshore masts FINO1 and FINO3 in the North Sea, and FINO2 in the Baltic Sea, reveals that inflected profiles occur in 65-75% of all analyzed 10-minute averages. The occurrence of abnormal profiles decreases as the roughness length increases and at the two onshore sites Valsneset and Skipheia in immediate vicinity to the Norwegian coast inflections are present in roughly 40% of the profiles. This percentage decreases to 16% only 1.7km inland at the Danish site Høvsøre, and is at its lowest occurrence of 12% at the inland Swedish forested location Ryningsnäs. The abnormal profiles were mainly in the form of 1 or 2 local maxima. Profiles with more than 2 local maxima and cases with a reversed and monotonically decreasing profile were also identified, but these are rare events with less relevance in wind energy applications. They do however depict the limitations to MO-theory in describing the **spectrum-range** of occurring profile shapes.

The occurrence of abnormalities showed a strong correlation to wind speed and the thermal state of the atmosphere. Profiles with multiple inflections generally have a lower velocity, the spectrum of wind speeds where these profiles occur is however large and many 1- and 2-inflection profiles occur at wind speeds relevant for wind energy applications. This is especially true at the offshore and coastal sites where the wind speed is generally higher.

Profiles inflected during positively buoyant very unstable conditions, i.e when there is strong turbulent mixing and low wind speed gradients, comprise the majority of abnormal profiles both onshore and offshore. The profiles inflected during conditions of neutral and negative buoyancy, i.e neutral to very stable conditions, are less common, but due to their larger shear these profiles are proposed to be the source of largest deviations between the predicted and measured wind speeds. The results indicate this issue is most severe offshore in the Baltic Sea, where these inflections occur at turbine operating wind speeds in

16.8% of all profiles at FINO2 and provide a viable explanation for why previous studies have found that MOST incorrectly predicts the vertical wind profile during stable conditions offshore (Sathe et al., 2012). While the Baltic Sea is a basin largely enclosed by land, vertical wind profiles severely inflected during very stable conditions were also found at FINO1 and FINO3 located 45km and 80km off- shore in the North Sea, and the wind direction of these profiles indicates an offshore internal boundary layer which may travel distances of more than 100km and still have large impacts on the vertical wind profile. At the coastal sites severe inflections are mainly linked with winds arriving from the sea during neutral conditions, with the coastal site Skipheia exhibiting neutral/stable inflections above cut-in wind speed in 10.4% of all profiles. The occurrence of these profiles decreases rapidly further inland and is likely not visible more than a few kilometers onshore.

The results of this study do suggest an evident need of a more fulfilling vertical wind profile description, especially at coastal and offshore locations where high wind speeds and severe inflections occur simultaneously. A solution may be emerging through a unified vertical wind profile description which is valid through the entire atmospheric boundary layer and not inhibited by surface-layer discontinuities. Such descriptions require knowledge of typical surface layer heights, and it is therefore important that future research continues the mapping of how the vertical wind profile develops under various surrounding conditions. This description is proposed to grow increasingly important as wind energy projects are expanding their reach to locations where little research has previously been conducted. While the study of inflected vertical wind profile has proved a simple and effective method for unambiguously categorizing abnormal vertical wind profiles, many additional profiles may be incorrectly described by MOST without exhibiting such features. In order to better describe both the cause and implications of vertical wind profiles which deviate from the expected shape, future studies may benefit from a synthesized identification method of quantifying the error between the predicted and actual wind profiles while simultaneously describing the profile in terms of the number of local maxima.

Data availability. The Skipheia (Frøya) data is available online, see the link in Domagalski and Sætran (2019). Access to the remaining datasets was granted as follows: FINO data may be granted through contact with personnel at BSH and through this available to download online. The Høvsøre data was made available through contact with Yoram Eisenberg of DTU Wind Energy. The Valsneset data was made available through contact with Lars Morten Bardal at NTNU. The Ryningsnäs data was made available through contact with Johan Arnqvist of Uppsala University.

Author contributions. The manuscript is based on Mathias Møller's master thesis. Lars Sætran was the supervisor, and Piotr Domagalski the co-supervisor for the thesis. Mathias Møller wrote the manuscript, that has been commented and revised by both co-authors

Competing interests. The authors declare no competing interests.

Acknowledgements. For access to the Skipheia data, the authors would like to acknowledge the support of the European Commission in form of the MaRINET project (project ID: 262552) funded under FP7-INFRASTRUCTURES program. For access to the large FINO databases the authors would like to acknowledge BMWi (Bundesministerium fuer Wirtschaft und Energie, Federal Ministry for Economic Affairs and Energy) and the PTJ (Projekttraeger Juelich, project executing organization), and also Anne-Christin Schulz from BSH for answering questions regarding the datasets. For access to the Høvsøre data, the authors would like to thank the DTU Wind Energy Energy group, and especially Yoram Eisenberg for providing the data. The authors would also like to thank Johan Arnqvist at University of Uppsala for providing access to the Ryningsnäs data, and Lars Morten Bardal of NTNU for access to the Valsneset data.

References

- Argyle, P. and Watson, S.: Assessing the dependence of surface layer atmospheric stability on measurement height at offshore locations, *Journal of Wind Engineering and Industrial Aerodynamics*, 131, 88 – 99, <https://doi.org/https://doi.org/10.1016/j.jweia.2014.06.002>, <http://www.sciencedirect.com/science/article/pii/S0167610514001081>, 2014.
- 5 Arnqvist, J., Segalini, A., Dellwik, E., and Bergström, H.: Wind Statistics from a Forested Landscape, *Boundary-Layer Meteorology*, 156, 53–71, <https://doi.org/10.1007/s10546-015-0016-x>, <https://doi.org/10.1007/s10546-015-0016-x>, 2015.
- Arya, S. P.: *Introduction to micrometeorology*, Academic Press Inc., 1988.
- Bardal, L. M., Sætran, L. R., and Wangsness, E.: Performance Test of a 3MW Wind Turbine – Effects of Shear and Turbulence, *Energy Procedia*, 80, 83 – 91, <https://doi.org/https://doi.org/10.1016/j.egypro.2015.11.410>, <http://www.sciencedirect.com/science/article/pii/S1876610215021426>, 2015.
- 10 Bardal, L. M., Onstad, A. E., Sætran, L. R., and Lund, J. A.: Evaluation of methods for estimating atmospheric stability at two coastal sites, *Wind Engineering*, 42, 561–575, <https://doi.org/10.1177/0309524X18780378>, <https://doi.org/10.1177/0309524X18780378>, 2018.
- Cooney, C., Byrne, R., Lyons, W., and O'Rourke, F.: Performance characterisation of a commercial-scale wind turbine operating in an urban environment, using real data, *Energy for Sustainable Development*, 36, 44 – 54, <https://doi.org/https://doi.org/10.1016/j.esd.2016.11.001>, <http://www.sciencedirect.com/science/article/pii/S0973082616308699>, 2017.
- 15 Csanady, G. T.: Equilibrium theory of the planetary boundary layer with an inversion lid, *Boundary-Layer Meteorology*, 6, 63–79, <https://doi.org/10.1007/BF00232477>, <https://doi.org/10.1007/BF00232477>, 1974.
- Domagalski, P. and Sætran, L. R.: Frøya wind data, <https://zenodo.org/record/2557500#.XR2mc1MzYII>, 2019.
- Eggers Jr., A. J., Digumarthi, R., and Chaney, K.: Wind shear and turbulence effects on rotor fatigue and loads control, *Journal of solar energy engineering*, 125, <https://doi.org/10.1115/1.1629752>, <http://solarenergyengineering.asmedigitalcollection.asme.org/article.aspx?articleid=1456872>, 2003.
- 20 Emeis, S.: *Wind Energy Meteorology*, Springer-Verlag Berlin Heidelberg, <https://doi.org/10.1007/978-3-642-30523-8>, 2013.
- Emeis, S.: Current issues in wind energy meteorology, *Meteorological Applications*, 21, 803–819, <https://doi.org/10.1002/met.1472>, <https://rmets.onlinelibrary.wiley.com/doi/abs/10.1002/met.1472>, 2014.
- 25 FINO1: FINO1: Research platform in the North Sea, <https://www.fino1.de/en/>, 2019.
- FINO2: FINO2: Research platform in the Baltic Sea, <https://www.fino2.de/en/>, 2019.
- FINO3: FINO3: Research platform in the North Sea, <https://www.fino3.de/en/>, 2019.
- Foken, T.: 50 Years of the Monin–Obukhov Similarity Theory, *Boundary-Layer Meteorology*, 119, 431–447, <https://doi.org/10.1007/s10546-006-9048-6>, <https://doi.org/10.1007/s10546-006-9048-6>, 2006.
- 30 Foken, T.: *Micrometeorology*, Springer-Verlag Berlin Heidelberg, 2 edn., <https://doi.org/10.1007/978-3-540-74666-9>, 2017.
- Garratt, J. R.: The internal boundary layer — A review, *Boundary-Layer Meteorology*, 50, 171–203, <https://doi.org/10.1007/BF00120524>, <https://doi.org/10.1007/BF00120524>, 1990.
- Gryning, S.-E., Batchvarova, E., Brümmner, B., Jørgens, H., and Larsen, S.: On the extension of the wind profile over homogeneous terrain beyond the surface layer, *Boundary-Layer Meteorology*, 124, 251–268, <https://doi.org/10.1007/s10546-007-9166-9>, <https://link.springer.com/article/10.1007/s10546-007-9166-9>, 2007.
- 35

- Gualtieri, G.: A comprehensive review on wind resource extrapolation models applied in wind energy, *Renewable and Sustainable Energy Reviews*, 102, 215 – 233, <https://doi.org/https://doi.org/10.1016/j.rser.2018.12.015>, <http://www.sciencedirect.com/science/article/pii/S1364032118308104>, 2019.
- Gutierrez, W., Ruiz-Columbie, A., Tutkun, M., and Castillo, L.: Impacts of the low-level jet's negative wind shear on the wind turbine, *Wind Energy Science*, 2, 533–545, <https://doi.org/10.5194/wes-2-533-2017>, 2017.
- IEC: IEC 61440: Wind turbines- Part 12-1: Power performance measurements of electricity producing wind turbines, Standard, International Electrochemical Commission, Geneva, Switzerland, <https://webstore.iec.ch/publication/26603>, 2017.
- Kaimal, J. C. and Wyngaard, J. C.: The Kansas and Minnesota experiments, *Boundary-Layer Meteorology*, 50, 31–47, <https://doi.org/10.1007/BF00120517>, <https://doi.org/10.1007/BF00120517>, 1990.
- 10 Kalvig, S., Gudmestad, O. T., and Winther, N.: Exploring the gap between ‘best knowledge’ and ‘best practice’ in boundary layer meteorology for offshore wind energy, *Wind Energy*, 17, 161–171, <https://doi.org/10.1002/we.1572>, <https://onlinelibrary.wiley.com/doi/abs/10.1002/we.1572>, 2014.
- Kettle, A. J.: Unexpected vertical wind speed profiles in the boundary layer over the southern North Sea, *Journal of Wind Engineering and Industrial Aerodynamics*, 134, 149–162, <https://doi.org/10.1016/j.jweia.2014.07.012>, <https://www.sciencedirect.com/science/article/pii/S0167610514001494>, 2014.
- 15 Lange, B., Larsen, S., Højstrup, J., and Barthelmie, R.: Importance of thermal effects and sea surface roughness for offshore wind resource assessment, *Journal of Wind Engineering and Industrial Aerodynamics*, 92, 959 – 988, <https://doi.org/https://doi.org/10.1016/j.jweia.2004.05.005>, <http://www.sciencedirect.com/science/article/pii/S0167610504000819>, 2004.
- 20 Nunalee, C. G. and Basu, S.: Mesoscale modeling of coastal low-level jets: implications for offshore wind resource estimation, *Wind Energy*, 17, 1199–1216, <https://doi.org/10.1002/we.1628>, <https://onlinelibrary.wiley.com/doi/abs/10.1002/we.1628>, 2014.
- Peña, A., Floors, R., Sathe, A., Gryning, S.-E., Wagner, R., Courtney, M. S., Larsén, X. G., Hahmann, A. N., and Hasager, C. B.: Ten Years of Boundary-Layer and Wind-Power Meteorology at Høvsøre, Denmark, *Boundary-Layer Meteorology*, 158, 1–26, <https://doi.org/10.1007/s10546-015-0079-8>, <https://doi.org/10.1007/s10546-015-0079-8>, 2016.
- 25 Petersen, E. L., Mortensen, N. G., Landberg, L., Højstrup, J., and Frank, H. P.: Wind power meteorology. Part I: climate and turbulence, *Wind Energy*, 1, 2–22, [https://doi.org/10.1002/\(SICI\)1099-1824\(199809\)1:1<2::AID-WE15>3.0.CO;2-Y](https://doi.org/10.1002/(SICI)1099-1824(199809)1:1<2::AID-WE15>3.0.CO;2-Y), [https://doi.org/10.1002/\(SICI\)1099-1824\(199809\)1:1<2::AID-WE15>3.0.CO;2-Y](https://doi.org/10.1002/(SICI)1099-1824(199809)1:1<2::AID-WE15>3.0.CO;2-Y), 1998.
- Peña, A., Gryning, S.-E., and Hasager, c. B.: Measurements and modelling of the wind speed profile in the marine atmospheric boundary layer, *Boundary-Layer meteorology*, 129, 479–495, <https://doi.org/10.1016/j.jweia.2014.07.012>, <https://link.springer.com/article/10.1007/s10546-008-9323-9>, 2008.
- 30 Riedel, V., Durante, F., Neumann, T., and Strack, M.: The First Year of Measurements on the FINO1 Platform in the North Sea - Evaluation and Analysis of the Wind Profile and Assessment of the Statistical Long-Term Mean Value, *DEWI Magazine*, 26, 37 – 48, https://www.dewi.de/dewi_res/fileadmin/pdf/publications/Magazin_26/07.pdf, 2005.
- Sathe, A., Gryning, S.-E., and Peña, A.: Comparison of the atmospheric stability and wind profiles at two wind farm sites over a long marine fetch in the North Sea, *Wind Energy*, 14, 767–780, <https://doi.org/10.1002/we.456>, <https://onlinelibrary.wiley.com/doi/abs/10.1002/we.456>, 2012.

- Sempreviva, A. M., Barthelmie, R. J., and Pryor, A. C.: Review of methodologies for offshore wind resource assessment in European seas, *Surveys in Geophysics*, 29, 471–497, <https://doi.org/https://doi.org/10.1007/s10712-008-9050-2>, <https://link.springer.com/article/10.1007/s10712-008-9050-2#citeas>, 2009.
- 5 Smedman, A.-S., Bergström, H., and Högström, U.: Spectra, variances and length scales in a marine stable boundary layer dominated by a low level jet, *Boundary-Layer Meteorology*, 76, 211–232, <https://doi.org/10.1007/BF00709352>, <https://doi.org/10.1007/BF00709352>, 1995.
- Smedman, A.-S., Bergström, H., and Grisogono, B.: Evolution of stable internal boundary layers over a cold sea, *Journal of Geophysical Research: Oceans*, 102, 1091–1099, <https://doi.org/10.1029/96JC02782>, <https://agupubs.onlinelibrary.wiley.com/doi/abs/10.1029/96JC02782>, 1997.
- 10 Smith, D. A., Harris, M., Coffey, A. S., Mikkelsen, T., Jørgensen, H. E., Mann, J., and Danielian, R.: Wind lidar evaluation at the Danish wind test site in Høvsøre, *Wind Energy*, 9, 87–93, <https://doi.org/10.1002/we.193>, <https://doi.org/10.1002/we.193>, 2006.
- Stull, R.: *Practical Meteorology: An Algebra-based Survey of Atmospheric Science*, University of British Columbia, 1.02 edn., https://www.eoas.ubc.ca/books/Practical_Meteorology/, 2017.
- 15 Svensson, N., Bergstrom, H., Sahlée, E., and Rutgersson, A.: Stable atmospheric conditions over the Baltic Sea: Model evaluation and climatology, *Boreal Environment Research*, 21, 387–404, 2016.
- Tambke, J., Lange, M., Focken, U., Wolff, J.-O., and Bye, J. A. T.: Forecasting Offshore Wind Speeds above the North Sea, *Wind Energy*, 8, 3–16, <https://doi.org/10.1002/we.140>, <https://onlinelibrary.wiley.com/doi/abs/10.1002/we.140>, 2005.
- Verkaik, J. W. and Holtslag, A. A. M.: Wind profiles, momentum fluxes and roughness lengths at Cabauw revisited, *Boundary-Layer Meteorology*, 122, 701–719, <https://doi.org/10.1007/s10546-006-9121-1>, <https://doi.org/10.1007/s10546-006-9121-1>, 2007.
- 20 Wagner, R., Antoniou, I., Pedersen, S. M., Courtney, M. S., and Jørgensen, H. E.: The influence of the wind speed profile on wind turbine performance measurements, *Wind Energy*, 12, 348–362, <https://doi.org/10.1002/we.297>, <https://onlinelibrary.wiley.com/doi/abs/10.1002/we.297>, 2009.
- Westerhellweg, A., Neumann, T., and Riedel, V.: FINO1 mast correction, *DEWI Magazine*, 40, 60 – 66, https://www.dewi.de/dewi/fileadmin/pdf/publications/Magazin_40/09.pdf, 2012.
- 25 WindEurope: Wind energy in Europe in 2018, 1, <https://windeurope.org/wp-content/uploads/files/about-wind/statistics/WindEurope-Annual-Statistics-2018.pdf>, 2019.