

Investigations of aerodynamic drag forces during structural blade testing using high fidelity fluid-structure interaction

Christian Grinderslev¹, Federico Belloni^{1,2}, Sergio González Horcas¹, and Niels N. Sørensen¹

¹Department of Wind Energy, Technical University of Denmark, Risø Campus, 4000, Roskilde ,

²Blade Test Centre A/S, Landdybet 10, 9220, Aalborg

Correspondence: Christian Grinderslev (cgrinde@dtu.dk)

Abstract. Aerodynamic loads on wind turbine blades that are tested for fatigue certifications, need to be known for planning and defining test loads beforehand. It is known that the aerodynamic forces, especially drag, are different for tests and operation, due to the entirely different flow conditions. In test facilities, a vibrating blade will move in and out of its own wake increasing the drag forces on the blade. This is not the case in operation. To study this special aerodynamic condition present during experimental tests, numerical simulations of a wind turbine blade during pull-release tests were conducted. High fidelity three dimensional computational fluid dynamics methods were used throughout the simulations. By this, the fluid mechanisms and their impact on the moving blade are clarified and through the coupling with a structural solver, the fluid-structure interaction is studied. Results are compared to actual measurements from experimental tests, verifying the approach. It is found that the blade experiences a high drag due to its motion towards its own whirling wake, resulting in an effective drag coefficient of approximately 5.3 for the 90 degree angle of attack. This large drag coefficient was implemented in a fatigue test load simulation, resulting in a significant decrease of bending moment along the blade, leading to less load applied than intended. The confinement from the test facility did not impact this specific test setup, but simulations with longer blades could possibly yield different conclusions. To the knowledge of the authors, this investigation including three dimensional effects, structural coupling and confinement is the first of its kind.

1 Introduction

For a wind turbine blade to be certified, full-scale structural tests are required to ensure the blade strength and endurance against extreme and fatigue loads (Post, 2016). These tests are especially relevant, as wind turbine blade design optimisation continuously moves the limit of what is possible in regards to saving material and lowering the levelized cost of energy (LCoE). When conducting fatigue tests on wind turbine blade designs, the standard procedure is to excite the blade in the resonance frequency for $2\text{E}+6$ - $10\text{E}+6$ cycles in flapwise and edgewise directions, or both simultaneously using biaxial forcing (White, 2004; Greaves et al., 2011; Greaves, 2013; Post, 2016). Blades are usually anchored in a horizontal position by means of steel bolts connecting the root to a test rig, whereas the excitation is enforced using translating or rotating mass exciters, or more traditionally, by forced motions using ground-based hydraulic actuators. These dynamic tests usually take several months, as millions of cycles need to be done before the blade is approved for use in normal operation.

25 One measure that needs to be considered for fatigue testing in laboratories, is that the tests are conducted at no wind flow conditions. This means that the aerodynamics around the vibrating blade is much different compared to the conditions during operation. This can be seen in the high energy amount needed to conduct the fatigue tests, especially in the flapwise directions, where the aerodynamic damping is immense. The high aerodynamic damping is a result of vortices created around the vibrating blade. In a test facility with no air flow, these vortices are not quickly convected away from the blade, which they would be
30 during wind turbine operation. This means that the blade has to travel back through the created vortices, resulting in a high air resistance to the motion, i.e high aerodynamic damping.

A HAWC2 (Larsen and Hansen, 2007) based simulation tool was developed to simulate the dynamic response of the blade subject to test excitation and to determine the test setup matching the fatigue target loads with the highest degree of accuracy. Test setups commonly include the installation of so-called tuning masses on yokes located at different radial positions along
35 the blade to tune the blade test loads (Malhotra et al., 2012; Zhou et al., 2014). When using aeroelastic codes like HAWC2, FAST (Jonkman, 2005), FLEX4 (Øye, 1996), etc, for this calibration, the high aerodynamic damping is usually added by increasing the drag coefficients of the airfoils. This is needed, since codes based on Blade Element Theory (BET) aerodynamic models do not account for the vortices created. This phenomenon was studied by Greaves, who calibrated the drag coefficient to fit the drag force to two dimensional computational fluid dynamics (CFD) simulations made by The National Renewable
40 Energy Centre (Narec) in the UK (Greaves, 2013). The CFD study was limited to one airfoil, oscillating at 1 Hz in amplitudes of 1m and 2m. In the study, Greaves found that a drag coefficient for 90 degrees angle (flapwise motion) should be set to approximately 5.3 and 4.45 at 1m and 2m amplitude respectively to account for the added damping. The drag coefficient for a 90 deg angle on airfoils is, depending on the shape, usually in the range of 1.45 to 2.06 (Montgomerie, 1996; Post, 2016; Timmer, 2010), making this necessary increase quite significant. Despite not having enough cases to conclude on the effect
45 of amplitude and frequency, these factors might play a significant role in the creation of vortices and the effect thereof. The phenomenon seen, is close to what was studied by Woolam at NASA back in 1968, where drag coefficients for oscillating flat plates were studied (Woolam, 1968). Here, experiments were conducted using a pendulum type apparatus with a flat plate attached, such that the damped oscillation due to air resistance was measured. It was found that oscillatory drag coefficients in general are larger than steady ones. Amplitude dependence was found only for small oscillations, where measurements were
50 less accurate, and independence of frequency was found (Woolam, 1968).

No confinement from walls, floor or ceiling was included in the aforementioned studies by (Greaves, 2013) using CFD nor in the experiments by Woolam (1968). In laboratories, the blades are positioned horizontally and, during fatigue tests, they oscillate in a fashion that brings the blade tip close to the floor. The confinement of the laboratory might affect the aerodynamics around the tested blade. When the blade moves downwards the air will be pushed down but blocked by the floor.
55 If the confinement around the blade is sufficiently large, the build-up of pressure could affect it significantly.

In the present study, high fidelity fluid-structure interaction (FSI) simulations of a pull-release test of a wind turbine blade were conducted to investigate three dimensional effects of both the increased aerodynamic damping and the confinement effects. The investigation clarifies the aerodynamic phenomena which could be used for improving the traditional approach of handling the increased drag. Results are compared to actual experimental results found at the Large Scale Facility of DTU

60 Wind Energy (Branner, 2020) to validate the FSI approach. Additionally, a preliminary numerical analysis for a single-axis flapwise fatigue test is presented, in which the test load evaluation is parametric on the choice of the drag coefficient C_D .

2 Methodology

In this section the numerical methods used will be presented along with the test case and chosen model setup.

2.1 Numerical methods

65 2.1.1 Flow solver

The high fidelity CFD code EllipSys3D (Michelsen, 1992, 1994; Sørensen, 1995) solves the incompressible RANS or LES equations using the finite volume method in general curvilinear coordinates, with a collocated grid arrangement. The code is parallelized using Message Passing Interface (MPI) and multi-block decomposition. EllipSys3D has multiple different convective schemes to choose from, e.g Central Difference (CDS), Second Order Upstream (SUDS), Quadratic Upstream Interpolation
70 for Convective Kinematics (QUICK), QUICK-CDS4. For pressure correction schemes the SIMPLE algorithm and variations of this is used to couple the velocity and pressure. Rhie-Chow interpolation is used to avoid odd/even pressure decoupling.

Several turbulence models are implemented such as two equation Reynolds Averaged Navie Stokes (RANS) models, hybrid models like Detached Eddy Simulations (DES), Delayed DES (DDES), Improved DDES (IDDES) and higher fidelity Large Eddy Simulations (LES) models.

75 Deformation of grids is handled through a moving mesh method with a volume blend factor, which moves mesh points according to their original displacement and distance to the blade surface along the grid line. This ensures that mesh points at the vicinity of the blade surface move along with the blade, and points further away only move a fraction of the displacement or not at all, using a blending function. The code has been used thoroughly for many years for various cases and was validated in e.g the Mexico project (Bechmann et al., 2011; Sørensen et al., 2016) and for the Phase VI NREL rotor (Sørensen and Schreck,
80 2014; Sørensen et al., 2002).

2.1.2 Structural solver

HAWC2 (Larsen and Hansen, 2007) is an aeroelastic code widely used by industry. The structural part of the code is based on the multi-body formulation, accounting for non-linear effects of large deflections. Each body can be represented by Euler or Timochenko beam elements, which are connected with constraint equations to assemble the total structure.

85 The aerodynamics of HAWC2 are based on blade element momentum (BEM) theory, and includes multiple models that are capable of handling dynamic stall, tiploss effects, skewed inflow etc Madsen et al. (2019). BEM-based models need input from airfoil polars along the blades to provide force coefficients used to calculate the aerodynamic forces.

2.1.3 FSI-framework

The two codes are coupled, in a 2-way manner, through the Python framework HAWC2CFD originally created by Heinz (Heinz, 2013) and further developed by Horcas (Horcas et al., 2019).

Using calculated displacements of nodes from HAWC2, the CFD mesh is deformed, and a new flowfield is found through EllipSys3D. The loads predicted by the CFD solver are then fed back to the HAWC2 structure and a new deformation is found. A loosely coupled approach was found to be sufficient for wind energy related cases, due to the high mass ratio between turbine and air (Heinz, 2013), and is therefore used.

In the remainder of this paper, the simulations conducted using this coupling with the CFD solver will be denoted FSI-CFD. Simulations conducted using HAWC2 only will be referred to as FSI-BET.

2.2 Test case

In this investigation, pull release tests of an approximately 14 meter wind turbine blade was chosen, as experimental results were available for validation. The blade is designed for use on upwind horizontal axis turbines, and equips a combination of FFA-W3 airfoils of varying thicknesses¹.

2.2.1 Experimental tests

Actual pull-release tests of the studied wind turbine blade were conducted at the DTU Large Scale Facility at DTU Wind Energy Risø. For this experiment, the blade was cantilevered from the concrete test rig with a 3.5° angle to horizontal, with the pressure side facing upwards. Self-weight and dynamic loads were, therefore, acting in the flapwise load direction. Along the blade, multiple longitudinal electrical resistance strain gauges were placed with a resolution of approx. 0.5 m, and at 12.8 m, an accelerometer was attached to the pressure side of the blade and aligned with the middle axis of the spar cap. One unfortunate limitation of the used accelerometer was a measurable acceleration limit of $\pm 4G$, which limits the measured oscillations of all the tests during the first oscillations after release. Acceleration measurements were shifted 1G to compare with FSI-CFD results, which omitted gravity in the acceleration output (but not in calculations). By this, the experimental measurements are in the range of -3G to 5G.

At 13 meters, a 4.8 kg saddle of timber was attached to the blade to enable the pull from beneath using a pulley system and a high strength polyester rope, which was fastened to the facility strong floor and suddenly truncated to generate the free oscillation. In the present case, a pull ensuring a 600mm tip displacement was chosen.

¹Due to confidentiality constraints, the exact geometry of the blade cannot be given in this document.

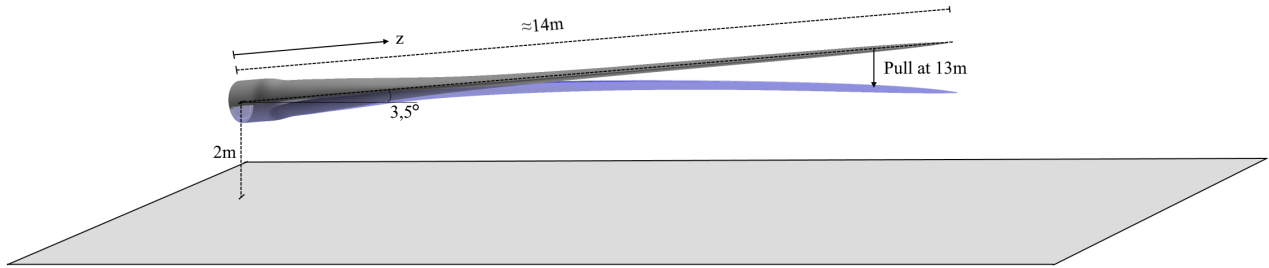


Figure 1. Setup for pull-release test/simulation

2.2.2 Modelled tests

115 The control of the blade pull was done through HAWC2. A specific node on the blade at 13 meters was pulled towards a node, representing the rope anchoring point at the floor. After the introduced vibrations were perished, the blade node was released, and the blade vibrates freely. This setup is much alike the actual experiment, where the saddle, attached at 13 meters, was pulled towards the floor as sketched in Figure 1. As an example of the simulations conducted, Figure ?? shows the result of one case, which will be explained further in a later section. The figure depicts the vertical position of the node which was pulled and released. As seen, the initial 50 seconds were used to damp out transients and slowly pulling the blade. After 50 seconds, the blade was released to vibrate freely for 45 additional seconds.

Multiple simulations were conducted on the DTU Wind Energy computer cluster "Jess", which consists of 320 compute nodes each with 20 Intel Xeon E5 2.8 GHz CPUs and 64 GB memory. To accelerate the computations, the grid sequencing of EllipSys3D was utilized, such that a very coarse grid was used in the FSI-CFD computations through the first 45 seconds of the simulations, during the transients and pull. Along with this, the multigrid feature of EllipSys3D was enabled using five grid levels. Each full simulation took 80-130 hours on 160 processors distributed on 8 computer nodes. For FSI-BET simulations, each simulation took roughly one minute to perform on one processor, which is five to six orders of magnitude less than the FSI-CFD simulations.

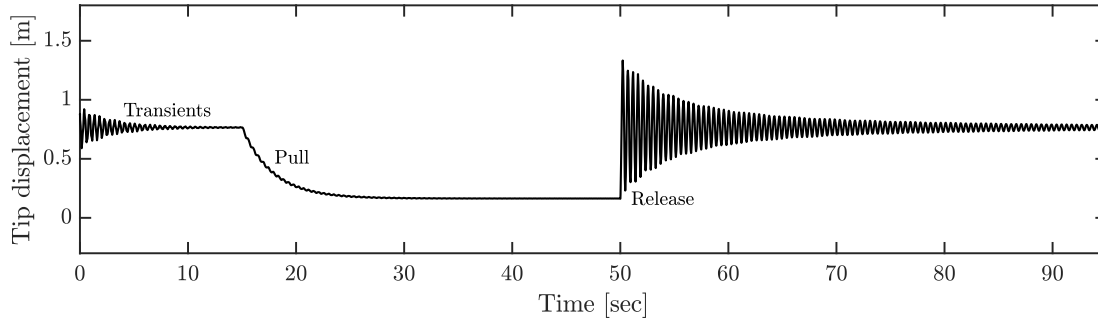


Figure 2. Full simulation timeseries of tip displacement

Similar to the actual experiment, a pull resulting in a 600 mm tip displacements from the equilibrium position of the blade was conducted, along with additional cases of 300, 400 and 500 mm to investigate any influence of initial amplitude. The 600 mm tip displacement will be used further on, unless otherwise stated.

Through the aerodynamic forces and velocity from the FSI-CFD simulations, the effective drag coefficient during the free oscillation was determined. The drag coefficient C_D was determined for the section at 12.8 meters using peak values of force and velocity in the flapwise direction and using the quasi-steady aerodynamic force per unit length:

$$C_D = \frac{2F_D}{\rho v^2 C} \quad (1)$$

Here, ρ is the air density set to 1.231 [kg/m³], C is the chord length (0.58m at the specific node), and v is the effective relative air speed seen by the node.

Additionally, results of the FSI-CFD, will be used for calibrations of drag coefficients to obtain equivalent FSI-BET results.

As the experiments were conducted indoor at the test facility, the modelled tests were performed with and without confining walls. By this, it is possible to asses any influence of the confined space of an indoor closed test facility.

2.3 Model setup

2.3.1 Grid generation

The confining walls were created to resemble the actual dimensions of the facility, however with several simplifications to facilitate grid generation, see Figure 3. For boundaries, the facility walls, floor and ceiling were set as symmetry, with no flow perpendicular to the boundary and zero gradient tangentially. The blade surface was assigned a no-slip wall condition. To ensure stability in the code a velocity inlet and outlet region were created near the ceiling. The inflow was set to 0.1 m/s, which through initial studies, not shown here, was found to not influence the results.

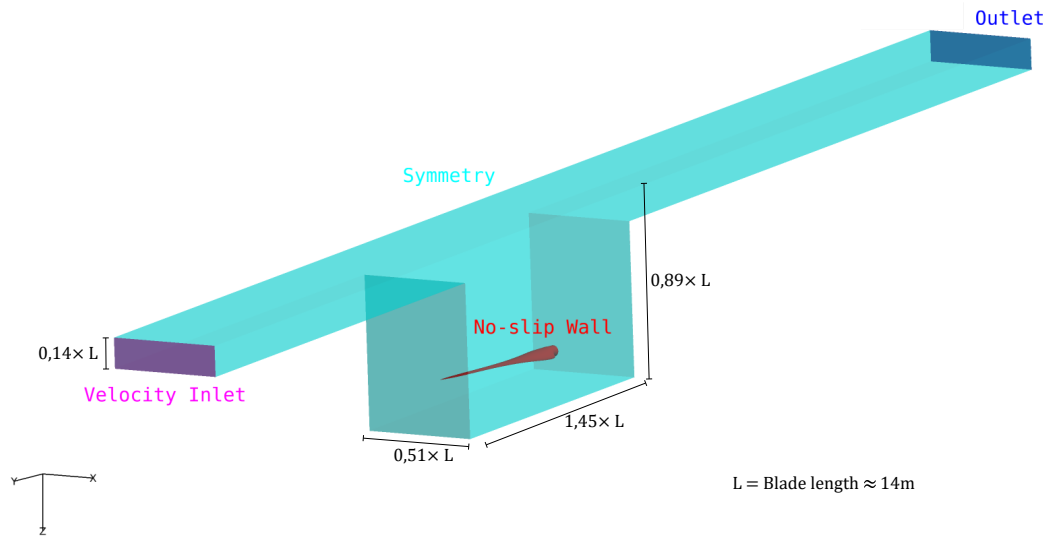


Figure 3. Domain and boundaries of confined setup, resembling the test facility

For the unconfined setup, a spheric domain was used with a radius of ≈ 25 blade lengths, see Figure 5. Boundary conditions were velocity inlet for the majority of the boundary. An outlet based on the assumption of fully developed flow was applied to the downstream part of the boundary intersected by a cone with ± 45 degree angles from the centre on the domain.

The inlet velocity was set to 0.1m/s for stability reasons, but this had no effects on the solution, as this velocity was much lower than the motion velocity of the blade during vibration.

The blade surface, depicted on Figure 4, was created using an in-house Python tool based on the theoretical shape, and discretized in 128 sections along the blade length and 256 cells chordwise with 9 grid points placed on the blunt trailing edge of the blade.

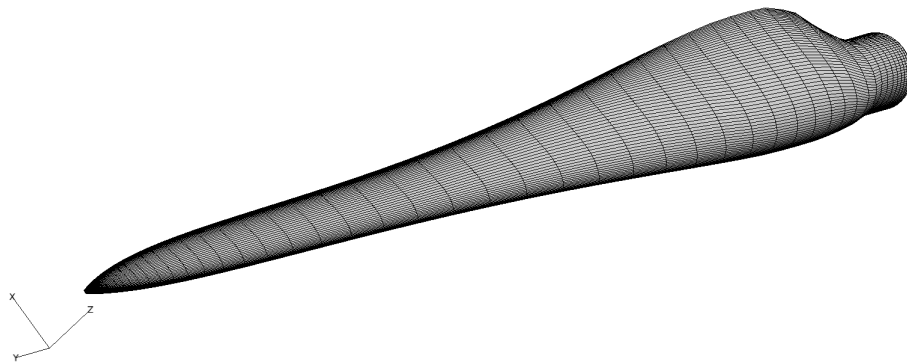


Figure 4. Surface mesh of the tested blade. Only every second line is shown for visual clarification

The non-confined grid, was a regular hyperbolic grid structure, which was extruded from the blade surface using HypGrid3D (Sørensen, 1998), as seen on Figure 5. A total of 5,242,880 mesh cells divided in 160 blocks of $32 \times 32 \times 32$ were used for the finest level of the spherical grid.

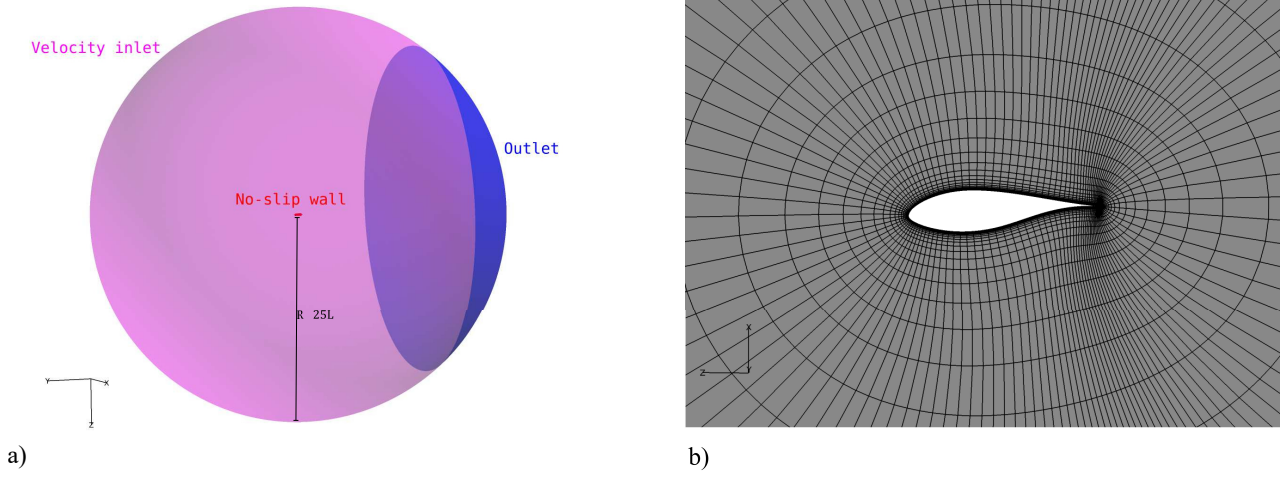


Figure 5. Spherical grid configuration. a) Outer boundary of grid, b) extruded grid around airfoil. Only every second line is shown for visual clarification

The grid generation of the confined setup was a combination of hyperbolic extrusion by Hypgrid3D from the blade surface, which was then connected to a transfinite mesh towards the confining walls using Pointwise 18.0 (Pointwise, 2017). A total of 5,177,344 mesh cells divided in 158 blocks of $32 \times 32 \times 32$ were used for the confined baseline grid, see Figure 6.

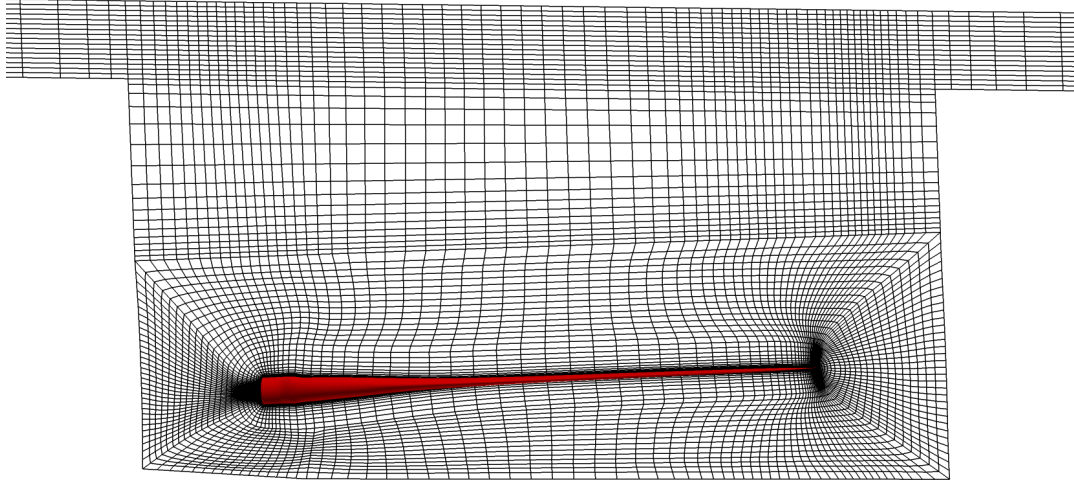


Figure 6. Volume mesh for confined setup (shown as computational surface at midpoint). Only every second line is shown for visual clarification

Grid sensitivity studies were made by coarsening (or refining) the grid, halving (or doubling) the number of grid points in each direction, and doubling (or halving) the time step to keep a constant CFL number, see A1. The baseline and fine setups resulted in sufficiently similar forces on the blade with only 0.41% to -3.54% force amplitude differences at the studied force peaks, and the baseline version of the grid was used throughout.

2.3.2 CFD setup

As mentioned, the CFD code EllipSys3D was used for FSI-CFD simulations of the pull-release test. To solve the flow, the QUICK differencing scheme was used along with a version of the SIMPLEC pressure correction scheme described in (Shen et al., 2003). The time step sensitivity was studied, and it was found that time steps of $5 \cdot 10^{-4}$ seconds were sufficiently fine to obtain independent results, see A2.

Turbulence modelling was complicated by that fact that little or no flow was present in the test section. Results with RANS $k-\omega$ SST (Menter, 1993), DES $k-\omega$ (Spalart et al., 1997; Travin et al., 2004) and without turbulence models were compared. It was found that the turbulence models introduced only small differences in the resulting forces on the blade, but made the computations unstable, probably due to the no flow condition around the blade, see A3. For this reason, no turbulence model was turned on through the simulation. This means that a DNS like simulation setup was chosen. It must however be emphasized that the grid by no means was fine enough to resolve all turbulence scales.

2.4 Structural dynamics

The blade model for HAWC2 was discretized in 19 Timochenko beam elements grouped in 10 bodies in the multi-body formulation. The blade was clamped at the root and was oriented horizontally with an initial angle of 3.5° at the root, like the experimental setup, seen on Figure 1. The simulations, as well as the experimental tests, were conducted with pressure side up. Structural properties were calibrated using the known cross sections throughout the blade, and structural damping was tuned to 1 % logarithmic decrement through Rayleigh damping for the first and second modes of the blade. The impact of structural damping on the overall result is assessed in Appendix B. A concentrated mass of 4.8 kg was added at 13 meters to resemble the saddle, which was attached to the blade during the experiment. For FSI-BET calculations, the blade was described through seven aerodynamic profiles. Each profile had a look-up table of force coefficients for calculations of aerodynamic forces along the blade.

3 Results and comparison

3.1 Flow visualization

To study the flow around the oscillating blade, the so-called Q-criterion (Hunt et al., 1988) found using the FSI-CFD results is depicted as isobars in Figure 7. The Q-criterion defines vortices as the spatial region where the vorticity dominates the strain rate, i.e showing the whirling structures.

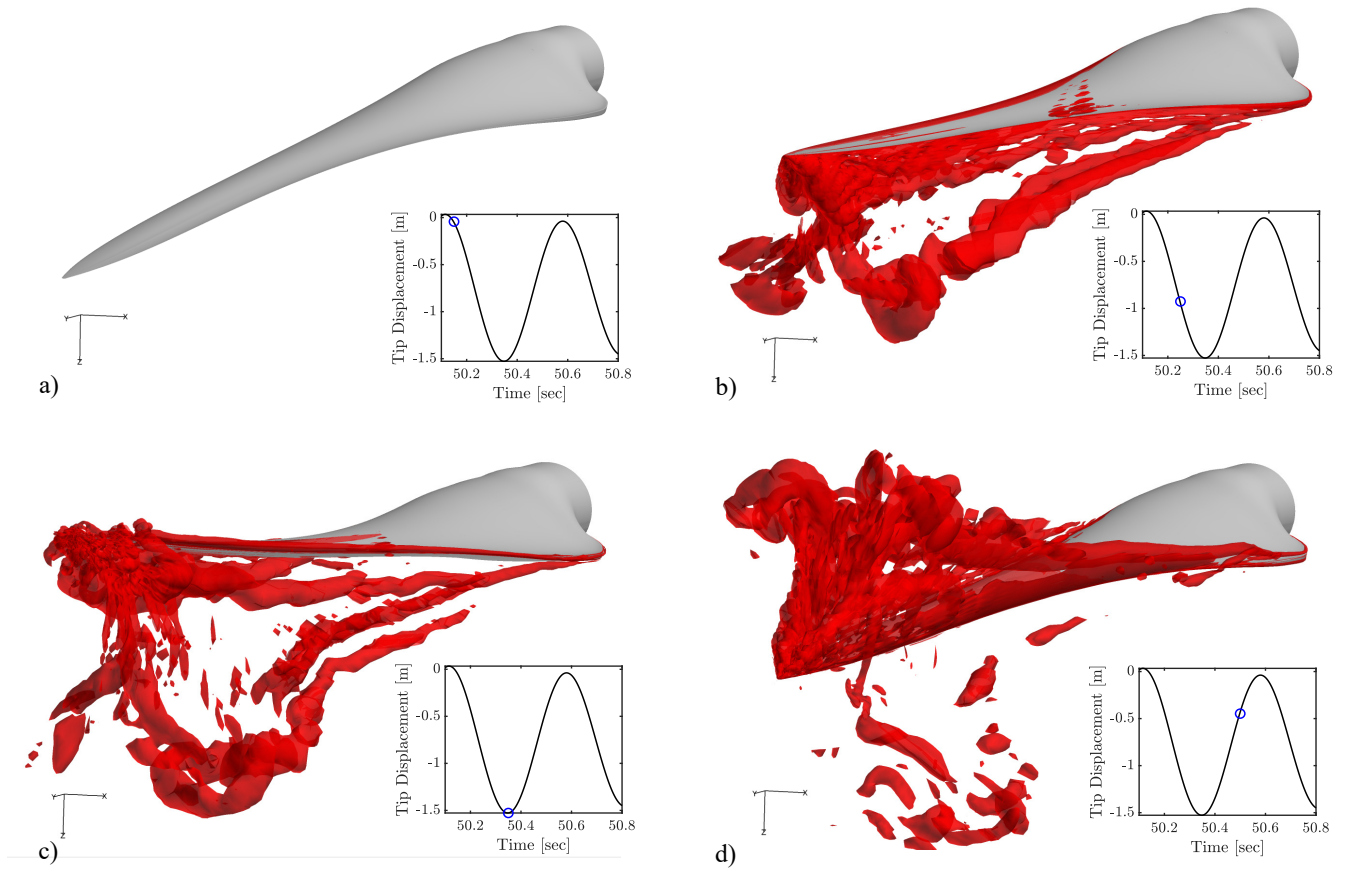


Figure 7. Isobars of Q-criterion during oscillation in confined configuration. $Q_{crit} = 500$. Graphs show position of blade tip for each figure

As seen in Figure 7, (b), vortices are created and shed from the blade as the blade is released, and at the turning point, (c), many vortices are present in the wake. The blade travels through the vortices, (d), and creates a new wake of vortices.

3.2 FSI validation

195 From the experimental test, the acceleration at 12.8 meters was measured with an accelerometer. This measured acceleration will in the following be used for comparison between simulations and experiment.

As seen on Figure 8, the measurements and the FSI-CFD results compare well. For all cases, a decay factor ζ was estimated, for the first part of the free oscillation. This decay factor does not consist of the aerodynamic damping alone, but is rather a way of comparing the effective total damping between experiments and simulations. The aerodynamic damping will change
200 during the oscillations, as it is dependent on the squared velocity and the drag coefficient, which might not be constant either. The decay factors are seen to be very comparable with a differences of 7 %. Note that as these decays are approximated for a limited number of cycles only, using the logarithmic decrement. The same number of cycles are used from both experimental and simulation results.

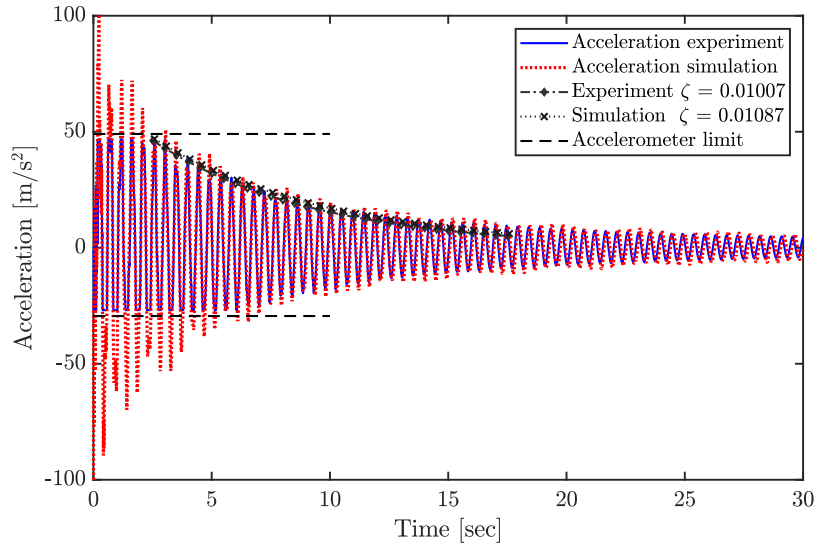


Figure 8. Acceleration measured in experiment and simulated using FSI-CFD at 12.8 meters

Looking at the power spectral density (PSD) of the test and simulation acceleration signals, it is also evident that the three mode frequencies are found at around 2.15Hz, 4.6Hz and 7.0Hz for both tests and simulations.

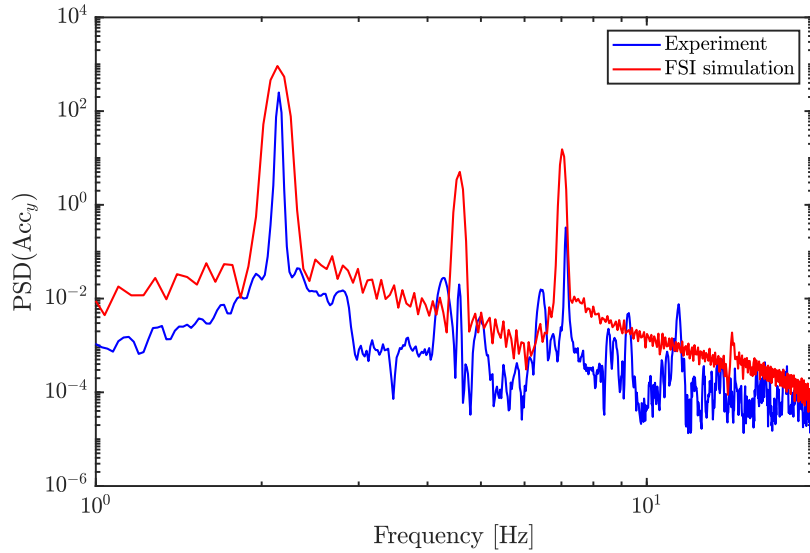


Figure 9. Power spectral density (using Welch estimate) of acceleration signals of experiment and simulation

From the beam moments, found through simulations, the strains were found for the locations of the strain gauges used in the experiment, using Eq. (2), omitting any axial forces and any effects related to the stiffness matrix cross-talk term EI_{xy} .

$$\epsilon = \frac{M_x}{EI_x}y + \frac{M_y}{EI_y}x \quad (2)$$

Strain gauge calibration was carried out beforehand by means of a static blade pull. As seen on Figure 10, the calculated and measured strain agree well, however with calculations overshooting the strain especially at the suction side of the blade. This overshoot happens before release as well, where CFD has no influence, thereby the reason must be a mismatch between the structural model and the tested setup, or the coordinates of the strain gauges. A cumulative uncertainty is present, as both Young's modulus (E), moments of inertia (I_x and I_y), strain gauge positions (x and y) and moments (M_x and M_y) all will have discrepancies between model and the real blade. As a quantitative example, the relative difference in strain amplitude between experiment and simulations of the peaks at ≈ 4.68 seconds yields overshoots of 30.3% at suction side and 6.0 % at the pressure side.

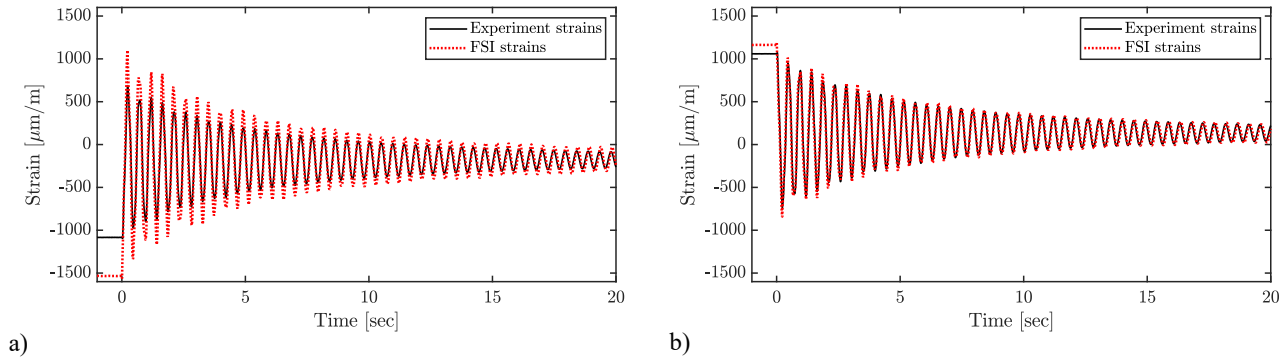


Figure 10. Strain calculated and measured at suction side (a) and pressure side (b) of blade at 63% length of blade.

3.3 Drag coefficient calibration

As mentioned earlier, the standard practice for using the BET quasi-steady aerodynamics for simulations of tests is to increase the drag coefficient C_D to consider the additional drag resistance in test cases compared to normal flow conditions. In the following, FSI-BET results are shown for multiple different drag coefficients, and compared with the FSI-CFD. The case of 600mm initial tip displacement is used throughout. The calibration of drag in the present case, was done by simply shifting the entire drag curve by constants, such that C_D at 90 degrees angle of attack reaches a chosen value. In this case with almost pure translatoric motion the angle of attack will be close to ± 90 degrees at all times. For other tests with motion in different directions, such as a bi-axial fatigue test, the pure shift of C_D might not be an ideal method, as one could imagine that the added resistance due to vortices will be quite limited for small angles of attack. The original drag coefficient of the profile at 90 degrees, $C_{D,90deg}$, found for operational conditions through 3D CFD is 1.3. This $C_{D,90deg}$ is lower than the range stated by (Montgomerie, 1996), due to 3D effects included in simulations, thereby reducing the drag. Drag coefficients known to be used by industry and research groups of 1.8, 2.2, 2.7, 4.5 and 5.30 were applied to the FSI-BET simulations. As seen on Figure 11, showing the tip displacement of the blade, the drag coefficients reach 4.5 - 5.30 before achieving similar damping as the

230 FSI-CFD simulation. This value fits well with the drag coefficients stated by Greaves (Greaves, 2013) for the calibration with 2D CFD simulations, of 5.30 and 4.45 for 1m and 2m amplitudes, however on another profile.

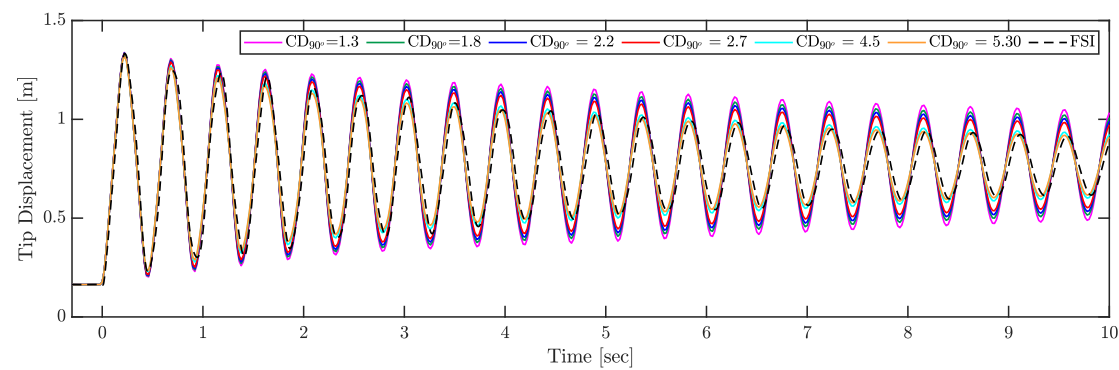


Figure 11. Tip displacement using BET aerodynamics with different drag coefficients compared with FSI results. All simulations with an initial tip displacement of 600mm

Taking a close look at the first few oscillations of the FSI-BET simulations shown on Figure 11, the best fitting drag coefficient is around 2.7 while after a few seconds the simulations using a C_D of 5.30 fit much better, indicating a varying drag coefficient through the vibration. Peaks at 1.15 seconds yield a 1.2% overshoot for $C_D= 2.7$ and -2.2% for $C_D= 5.30$. At 235 7.2 seconds, however, $C_D= 2.70$ results in a 8.0% overshoot, while $C_D= 5.30$ overshoots with only 0.6%. By this, $C_D=5.30$ represents better the total simulation when using a constant drag coefficient, which is also visible on Figure 11.

Inspecting the effective drag coefficients of the FSI-CFD simulations with varying initial deflections, Figure 12 displays the node displacement, of the 12.8m node, of the first 15 seconds after release along with the corresponding force coefficient in the flapwise direction.

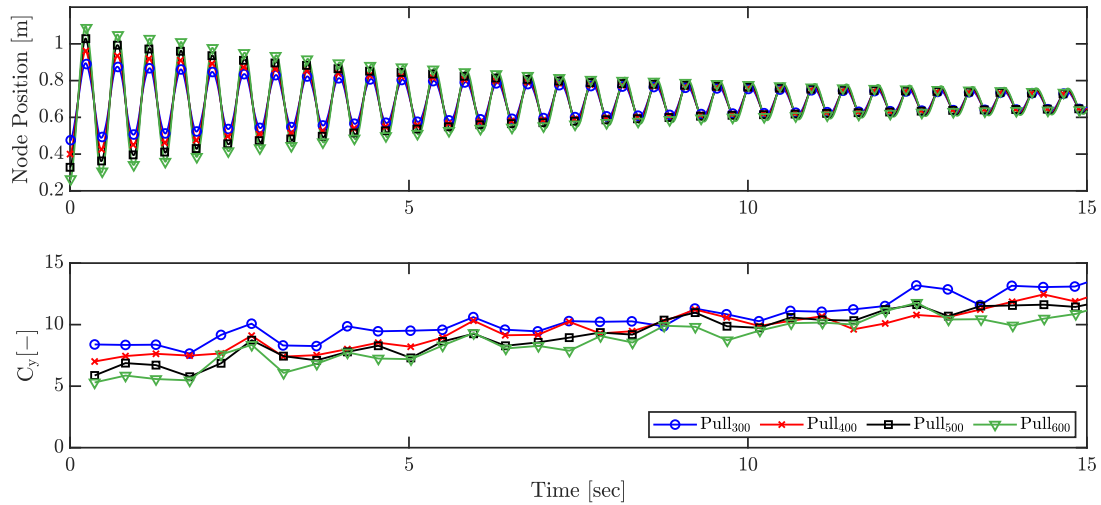


Figure 12. Oscillation of node at 12.8m and corresponding force coefficient.

240 It is seen that the force coefficient increases during the vibration as the amplitude decreases. This relationship is also seen from the initial force coefficients of 5.3, 5.9, 7.0 and 8.4 respectively for 600, 500, 400 and 300mm initial tip displacements. It is not possible to conclude anything about the relationship between amplitude and force coefficients with the chosen number of cases, but it is clear that future investigations are relevant. As seen, the initial force coefficient fits well with the aforementioned calibrated coefficient of 5.3 using the BET simulations of the 600mm pull, Figure 11. The reason for the calibrated drag
245 coefficient not needing to increase during the simulation to fit the FSI-CFD results, is due to the fact that the aerodynamic force is dependent on the squared velocity. This means that for large amplitudes, i.e large velocities, the drag force will dominate, while decreasing in impact as the amplitude decreases.

Based on this investigation, drag coefficient calibration of BET based fatigue test simulations, should follow the actual amplitude of the blade during the test. Taking into account the different amplitudes along the blade by having multiple look-up
250 tables for force coefficients depending on amplitude could resolve this. This would, however, require some development on the existing codes. The chord length of the blade might also affect this dependency, but this has not been studied further here.

3.4 Influence of increased drag

To assess the impact of the increased drag on the fatigue test load simulations, a preliminary study was made. Here, BET-based simulations were conducted to obtain moment distributions along the blade for different drag cases. The simulation results were
255 compared to the target moment distributions of the specific fatigue test. As case of study, a flapwise fatigue test for $N=2E+6$ cycles was considered. The blade was modeled as described in Section 2.4. A set of tuning masses was installed on the blade, whereas the force excitation was applied by means of a translating mass exciter. Tuning masses were modeled as concentrated masses and located at specific beam nodes. The exciter was modelled as a pre-defined mass translating on a linear path at the

flapwise resonance eigen frequency, which was evaluated for the blade system including tuning masses and excitation mass.

260 The location and magnitude of the tuning masses and the excitation parameters were determined beforehand. The test target loads M_{tgt} were, also, provided as an input, based on the blade lifetime fatigue calculations carried out in (Galinos, 2017). A simulation time $T_{sim} = 100$ sec was adopted for all the test cases, excluding the initial transient loading which was disregarded. The rainflow counting algorithm developed in (Nieslony, 2010) was implemented in a MATLAB script used to evaluate the achieved test bending moment. Equation 3 was used to determine the so-called 1Hz equivalent load, where i indicates the i -th

265 bin, n_i the number of counted cycles for the i -th bin, M_i the bending moment amplitude for i -th bin, m the S-N curve slope parameter and N_{1Hz} the number of cycles of a 1 Hz signal in a time interval equal to T_{sim} . The S-N curve slope parameter was chosen equal to 12, which is typical for blades manufactured in glass fiber reinforced composite material, as the one used in this study. The test load was subsequently calculated by Eq. 4, which accounts for the flapwise resonance testing frequency f_{flap} .

$$270 \quad M_{1Hz} = \left(\frac{\sum_i n_i M_i^m}{N_{1Hz}} \right)^{\frac{1}{m}} \quad (3)$$

$$M_{test} = \left(\frac{M_{1Hz}^m}{f_{flap}} \right)^{\frac{1}{m}} \quad (4)$$

Table 1 describes the test setup adopted during the presented set of simulations, in which the only varied parameter was the drag coefficient. The excitation parameters, i.e the excitation mass longitudinal position (z_e), the excitation mass magnitude (m_e), and the excitation mass oscillation amplitude (s_e), were chosen to achieve a relative test bending moment of approx.

275 100 % in the blade portion between 20 % and 80 % of the blade span for the test setup with maximum value of C_D equal to 1.8 for an angle of attach of 90° . The excitation parameters were then kept constant for varying C_D curves with maximum value in the range between 1.3 and 5.0, as done in section 3.3, where 1.8 was taken as baseline since 1.3 is expected to underestimate the blade loading.

Table 1. Flapwise test setup with indication of location z_t and magnitude m_t of the tuning masses, location z_e , mass magnitude m_e and stroke s_e of the exciter and excitation frequency f_{flap}

Tuning masses		Flapwise exciter			
z_t [%]	m_t [Kg]	z_e [%]	m_e [kg]	s_e [m]	f_{flap} [Hz]
31.5	660	31.5	200	± 0.085	2.205
52.6	100	-	-	-	-

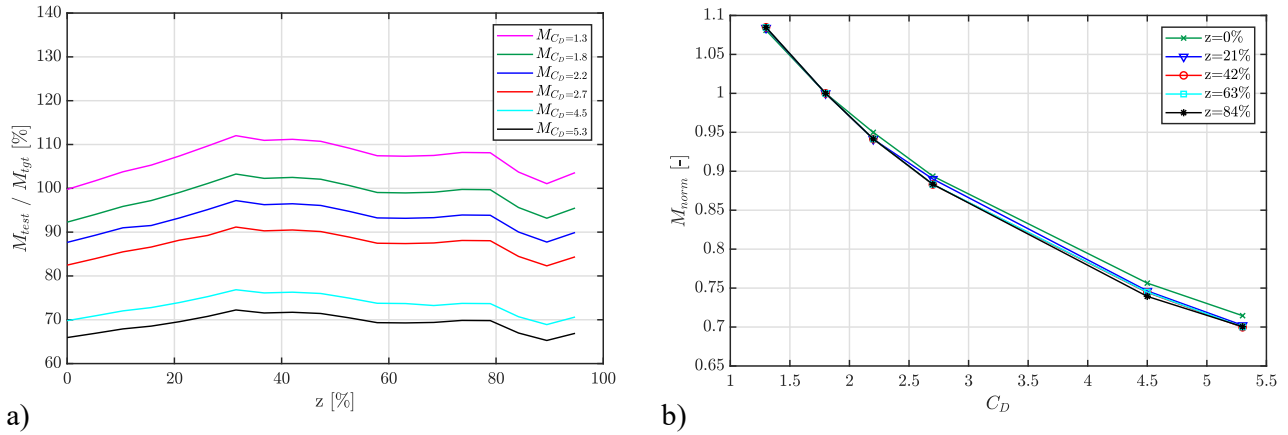


Figure 13. a) Variation of the achieved flapwise test bending moment along the blade with respect to the target load for different drag coefficients and b) variation of the test bending moment normalized against the root bending moment as a function of the drag coefficient, for different blade span locations

Fig. 13 shows the variation of the achieved test bending moments along the blade span for a varying C_D in the defined range. In Fig. 13 (a) it can be noticed how the achieved test load decreases with increasing C_D . The load reduction is highlighted in Fig. 13 (b) by representing the variation of the achieved bending moment M_{norm} , normalized with respect to the baseline case ($C_D = 1.8$), as a function of the drag coefficient. It can be concluded that the decrease in achieved test load follows the same trend for different locations along the blade span. Moreover, it was observed that the achieved load variation is non-linear and presents a slope which appears to be decreasing for increasing drag coefficients.

3.5 Confinement influence

As described in section 2.3.1, different configurations were treated to study the possible influence of the confined space around the tested blade. The same four pull distances were tested with and without confinement, and the resulting tip displacements and aerodynamic forces were compared. As seen in Figure 14, the confined and unconfined setup yields very similar results for aerodynamic forces and results in essentially identical displacements, indicating that the confinement has no effect in the present setup.

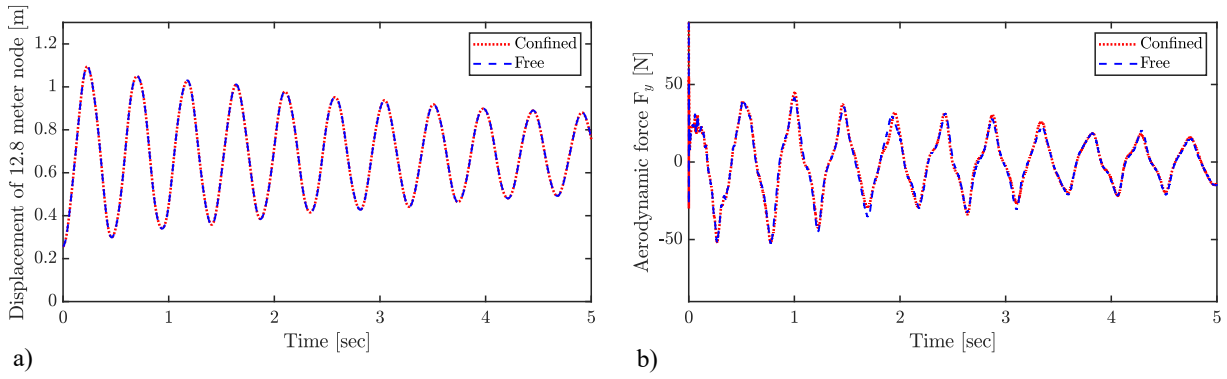


Figure 14. Confinement effect on displacement (a) and aerodynamic forcing (b) on node at 12.8 meter

Figure 15 depicts respectively the pressure and velocity field around the blade at the time of the blade passing its equilibrium position, i.e. approximately at maximum velocity. It is evident that the gradients of pressure and velocity near the floor and walls are small, which supports that the effect of the confinement is negligible. As the blade velocity will decrease when moving closer to the floor, the blockage effect will decrease as well. However, it is also seen that a large zone of high pressure, is created beneath the blade, which in cases of longer blades with larger chords, might grow sufficiently to interact with the floor. In large test facilities, blades that are 5-7 times longer than the design studied in the present work are tested. The ratios between blade length and wall/floor distance for these cases will be different than the one studied here. In the minds of the authors, the possible effect should be tested using one of these blades with a similar FSI setup, before drawing general conclusions about the effect of confinement.

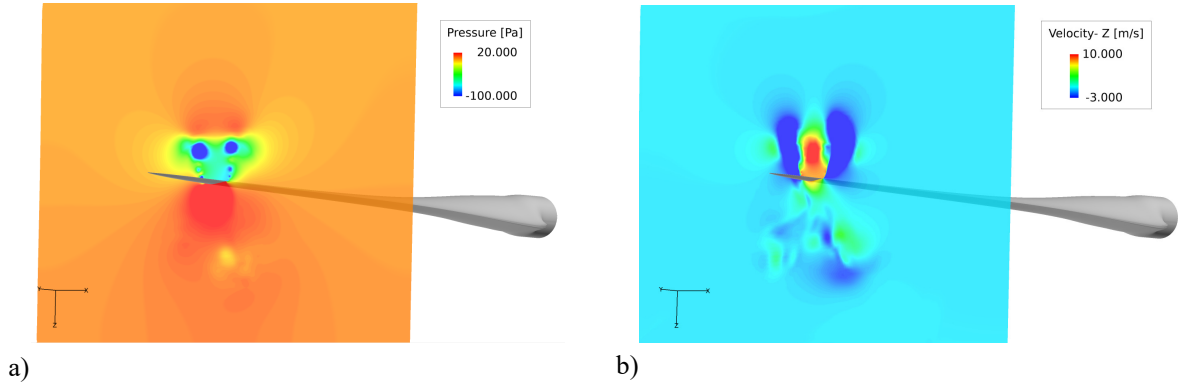


Figure 15. Confined configuration: a) Pressure field, b) Vertical (z) velocity field

This study has been conducted to investigate the special aerodynamic circumstances present during full-scale structural experiments in blade test facilities, being high drag forces during flapwise vibration and confinement of air in the test facility. These phenomena are important for e.g fatigue tests, where millions of vibration cycles are forced using exciters, requiring a large amount of energy.

305 Three dimensional high fidelity fluid-structure interaction simulations (FSI-CFD) of pull-release tests on a $\approx 14\text{m}$ wind turbine blade have been conducted and analyzed. Results are compared to experimental results, to validate the simulations, and in general a good agreement is seen. Accelerations measured on the blade during the experiment and simulated through the FSI-CFD show similar damping, quantified by a decay factor ζ , with a relative difference of 7% for the tested case of 600mm initial tip displacements. Measured strains are compared to those calculated from resulting moments of FSI-CFD. Here the
 310 pressure side strains are predicted well, whereas overshoots are seen in the suction side strains, probably due to discrepancies between structural model and actual blade.

Simulation results are used to study the flowfield around the oscillating blade, and investigate the impact of the blade moving through its own whirling wake along with the confined conditions of a test facility. Through visual inspection of the calculated flowfield, it is evident that large vortices are created behind the moving blade, which the blade has to travel back through when
 315 changing direction. This causes the effective drag force coefficients on the blade to significantly exceed those seen during normal operation. In the specific case of 600mm initial tip displacement, a drag coefficient for the 90 degree angle of attack, $C_{D,90\text{deg}}$, of BET based FSI needs to be increased to 5.3 from the originally 1.3, in order to fit FSI simulations, using CFD aerodynamics. However, it is found that the drag coefficient varies with amplitude as to why, one specific drag coefficient will not cover all cases.

320 A single-axial flapwise fatigue test simulation was used as case study to evaluate the impact of the C_D choice on the test load calculation. For a constant test load setup, the C_D curves were varied in a range of peak values between 1.3 to 5.3 for an angle of attack of 90° , which provoked a non-linear decrease of the achieved test load of approx. 25% with respect to the target loads. This proves how the correct choice of the C_D coefficient is crucial for the validation of aero-elastic test simulations against experimental results.

325 An interesting topic to study further, is the dependency between the increase of drag coefficient and the ratio between oscillation amplitude and chord width. For small amplitudes, the blade passes through the wakes all the time, while large amplitudes might create enough distance to the shed wakes to only affect right at the turn of direction. This could lead to a limit of depense at small amplitudes as seen for flat plates in (Woolam, 1968). There might also be a dependence on the oscillation frequency which sets the velocity of the blade, however this was not the case for flat plates in (Woolam, 1968).

330 A mapping of force coefficients depending on motion, could be added to the existing force coefficient tables, to conduct more accurate BET based simulations of fatigue tests, and possibly assist in choosing methods for fatigue testing to reduce the energy demand of the test.

The role of confinement due to floor, walls and ceiling in the test facility is analyzed by using and comparing FSI-CFD simulation results with confined and unconfined setups. No impact is seen when comparing the results of the confined and unconfined setup, showing that confinement effects are negligible in the present case. A future study of the same effect on longer blades would be beneficial, as the ratio between blade-to-floor distance and blade length and chord width will change significantly.

A natural continuation to this work would also be to simulate actual fatigue tests, with both uniaxial and biaxial motion. A biaxial motion could possibly reduce the air resistance, as the blade would not move directly back through its own wake. The wake itself could also differ significantly with other motion patterns, making this an interesting study.

Appendix A: Sensitivity analysis - CFD

The following serves as a continuation of section 2.3.1, and shows results of the sensitivity studies made concerning grid refinement, time steps and turbulence models. To simplify the sensitivity study, a 1-way coupled FSI-CFD study was conducted using imposed motions. Instead of HAWC2 defined motions, an analytic polynomial expression of the vertical motion was applied, which resembles the case of 600mm tip displacement to a satisfying degree. The frequency, amplitude and damping was calibrated to fit the initial results of the FSI-CFD results, however the displacement due to gravity was not included. For practical reasons, instead of a release from the deformed state, the motion started from the initial position of the blade like a sinusoidal function.

The analytic expression for the blade motion used is:

$$\text{Disp} = x^2 \cdot A \cdot \sin(2\pi \cdot f \cdot t) \cdot e^{-\zeta \cdot f \cdot \pi \cdot t} \quad (\text{A1})$$

Where, x is the coordinate along the blade, A is a constant, f is the motion frequency, t is time and finally ζ is a damping ratio. To fit the FSI-CFD results, the following values were used: $A=0.0028$, $f=2.15\text{Hz}$ and $\zeta=0.025$. The tip displacement of the analytical expression is shown in Figure A1, together with the FSI-CFD results which are shifted upwards to omit the gravity displacement and a quarter period to the right. As seen, the tip displacements agree well, justifying the use of the predescribed motion for sensitivity studies.

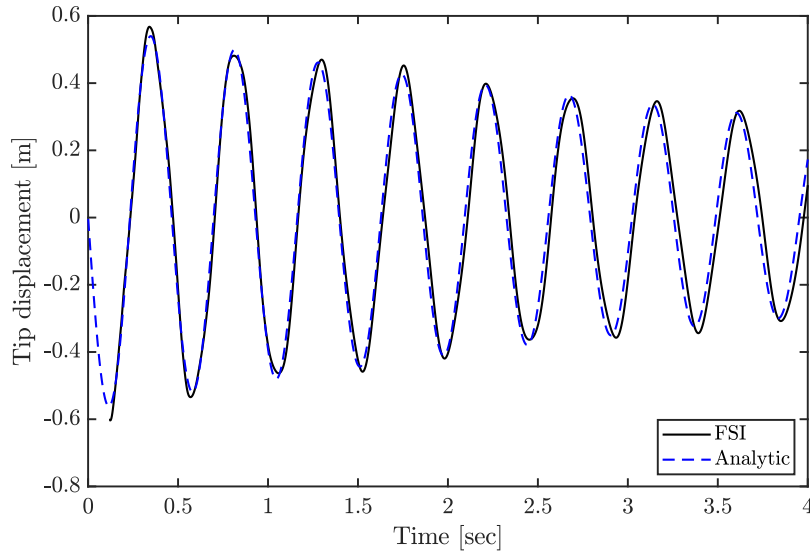


Figure A1. Tip displacement using analytic expression compared to result from FSI-CFD with 600mm initial tip displacement. Note that the FSI-CFD result is shifted with the equilibrium position due to gravity and a quarter period to the right

Comparison between tests is done by comparing amplitudes at two peaks P_1 at ≈ 0.65 sec and P_2 at ≈ 2.96 sec, along with the damping ratio calculated using the logarithmic decrement between the points. Baseline tests are marked with '*'.

A1 Grid sensitivity

To study the sensitivity of grid refinement, four versions of the grid were tested. All grids consisted of 158 blocks, but using a different number of cells per block being 8^3 , 16^3 , 32^3 , 64^3 , where 32^3 is the baseline grid (level 1), used when creating the setup. Time steps were adjusted accordingly to obtain identical CFL numbers using $\Delta t = 5 \cdot 10^{-4}$ sec for the baseline and halving the time step when doubling the refinement and vice versa. As seen on Figure ?? and Table A1, the finest setup and the baseline, level 0 and level 1 respectively, result in very similar results with only small differences of -0.41% at P_1 , -3.54% at P_2 and 2.52% for ζ .

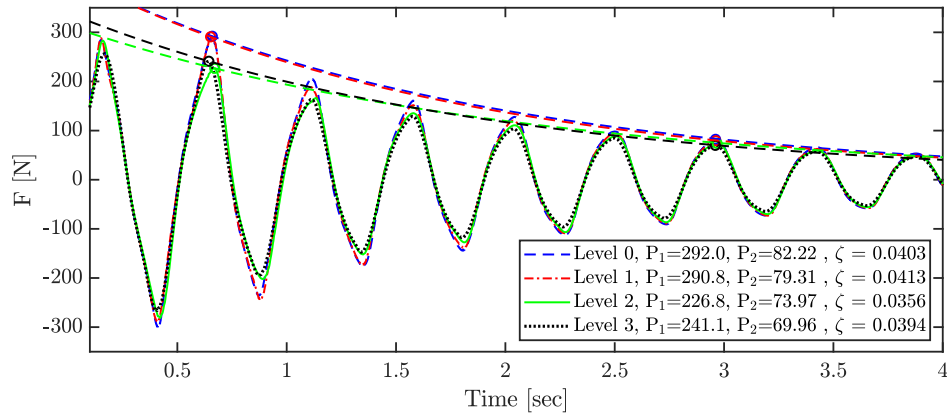


Figure A2. Grid sensitivity study using different number of cells per block. A total of 158 blocks was used.

Level 0 = $64 \times 64 \times 64$ per block = 41.418.752 cells in total. Level 1 = $32 \times 32 \times 32$ per block = 5.177.344 cells in total. Level 2 = $16 \times 16 \times 16$ per block = 647.168 cells in total. Level 3 = $8 \times 8 \times 8$ per block = 80.896 cells in total

Table A1. Comparison of peaks and damping ratio for different grid levels

Grid level	P_1 [N]	ϵ_{P1}	P_2 [N]	ϵ_{P2}	ζ [-]	ϵ_{ζ}
Level 0*	292.0	-	82.22	-	0.0403	-
Level 1	290.8	-0.41%	79.31	-3.54 %	0.0413	2.52%
Level 2	226.8	-22.34%	73.97	-10.00 %	0.0356	-11.60%
Level 3	241.1	-17.42%	69.96	-14.91 %	0.0394	-2.36%

365 A2 Time step sensitivity

Three different time steps; $5 \cdot 10^{-3}$ sec, $1 \cdot 10^{-3}$ sec and $5 \cdot 10^{-4}$ sec were tested to find an optimum for the FSI-CFD simulations. The results are depicted on Figure, A3 and Table A2, and it is seen that there is practically no difference between $1 \cdot 10^{-3}$ sec and $5 \cdot 10^{-4}$ sec, with errors of 1.69% at P_1 , -1.56% at P_2 and 2.50% for ζ .

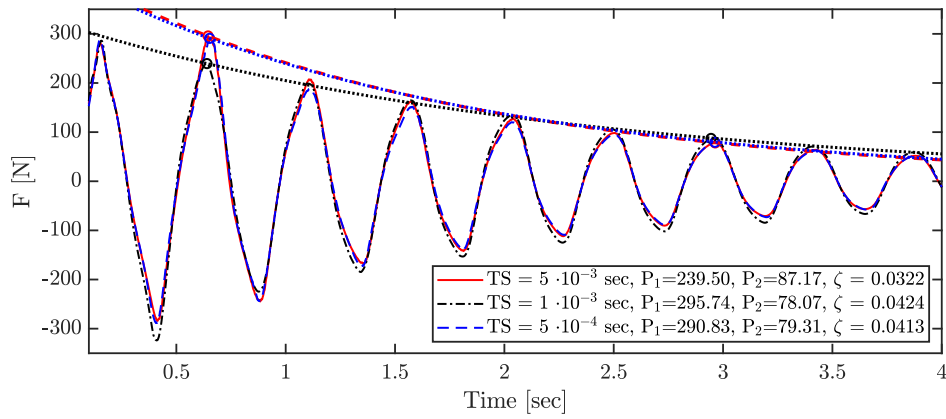


Figure A3. Sum of aerodynamic forces on blade during vibration using time steps of $5 \cdot 10^{-3}$, $1 \cdot 10^{-3}$, $5 \cdot 10^{-4}$

Table A2. Comparison of peaks and damping ratio for different time steps

Time step	P_1 [N]	ϵ_{P1}	P_2 [N]	ϵ_{P2}	ζ [-]	ϵ_{ζ}
$5 \cdot 10^{-4}$ *	290.83	-	79.31	-	0.0322	-
$1 \cdot 10^{-3}$	295.74	1.69%	78.07	-1.56%	0.0424	2.50%
$5 \cdot 10^{-3}$	239.50	-17.65%	87.17	9.92%	0.0413	- 22.2%

A3 Turbulence model sensitivity

370 Turbulence models were initially meant to be included, but it quickly showed, that the special case of no flow in the domain caused these models to become unstable. For this reason different methods were compared being; $k - \omega$ SST, DES $k - \omega$ SST and finally without any turbulence model enabled, such that a DNS like simulation is run.

In the presented case, the $k - \omega$ model crashed during the first cycle while the DES $k - \omega$ SST seemed more stable, however, with sudden jumps and finally crashing as well. Many attempts were conducted varying schemes, inlet turbulence parameters, 375 time step among others to create a stable run using turbulence models, but none were successful. As seen in Figure A4 and Table A3, the three models result in similar forces on the blade, with differences of -4.51% at P_1 , 3.32% at P_2 and -5.7% for ζ , between DNS and DES.

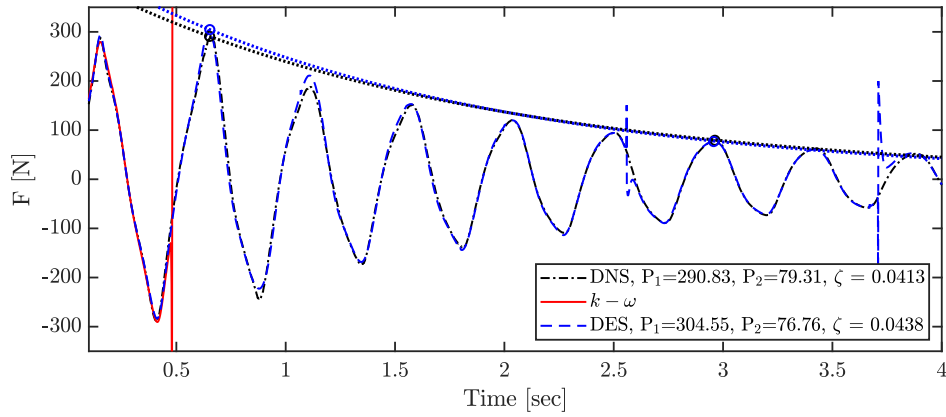


Figure A4. Sum of aerodynamic forces on blade during vibration using; No turbulence model (pseudo DNS), $k - \omega$ SST and DES $k - \omega$ SST

Table A3. Comparison of peaks and damping ratio for different Turbulence models

Turbulence model	P_1 [N]	ϵ_{P1}	P_2 [N]	ϵ_{P2}	ζ [-]	ϵ_{ζ}
DES $k - \omega$ SST*	304.55	-	76.76	-	0.0438	-
DNS	290.83	-4.51%	79.31	3.32%	0.0413	-5.7%
$k - \omega$ SST	-	-	-	-	-	-

A4 Conclusion of sensitivity analysis

From the presented sensitivity studies of grid levels, time steps and turbulence models used, the following setup was chosen: For grid refinement the baseline grid was deemed sufficiently fine for the FSI-CFD simulations, taking into account the computational efforts necessary to use the finer grid.

Due to stability issues, it was chosen not to use any turbulence model and use the DNS like approach. It must be emphasized, however, that the grid was not fine enough to resolve all turbulent scales, as required for a proper DNS simulation. However, the scales of the important vortices were resolved sufficiently well, and the errors compared to the DES $k - \omega$ SST model were small.

For the time step, it was chosen to use $5 \cdot 10^{-4}$ sec for the FSI-CFD simulations throughout, despite the $1 \cdot 10^{-3}$ sec resulted in small errors only. This choice was made to compensate for some of the error seen for using no turbulence models.

Appendix B: Sensitivity study - Structural damping

As mentioned in Section 2.4, the structural damping of the model was tuned beforehand to 1% logarithmic decrement using Rayleigh damping in HAWC2. This value is a choice, conservatively based on the findings of (Post, 2016). However, it is difficult to assess the exact value of structural damping through experimental tests, as the aerodynamic damping cannot be

excluded entirely. To investigate the impact of the structural damping, a small study was done using HAWC2 based simulations with different structural damping parameters of 0, 1, 2 and 3% logarithmic decrement. The 90 degree aerodynamic drag coefficient was set equal to 5.3 as found to be suitable for the setup in the FSI study. A case without aerodynamic forces and
 395 1% logarithmic decrement structural damping is added to clarify the different impact of aerodynamic and structural damping. The tip displacement of the blade using the different damping coefficients is depicted in Figure B1. It is seen that the difference in structural damping from 1,2 and 3% logarithmic decrement only result in minor differences of the tip displacement result. It is also clear, that the aerodynamic damping added by introducing a drag coefficient of 5.3 dominates the total damping.

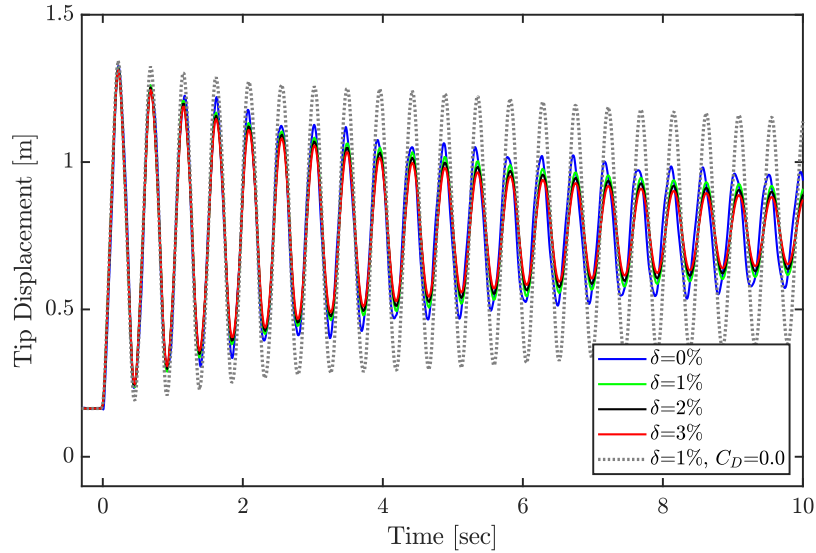


Figure B1. Tip displacement using 0,1,2 and 3% logarithmic decrement structural damping and $CD_{90} = 5.3$. Simulation without aerodynamic drag ($CD_{90} = 0.0$) and 1% logarithmic decrement structural damping added for comparison

Code and data availability. The codes used to conduct the presented simulations are licensed and not publicly available. Data is likewise not
 400 publicly available due to confidentiality of blade design

Author contributions. CG conducted all FSI simulations, including grid generation and FSI-BET calculations. Additionally CG has been the main writer of the paper. FB took part in experiments, and created the structural HAWC2 setup used in the FSI simulation. FB also made initial moment calibrations to asses influence of drag coefficients on fatigue tests. SGH has supported CG in FSI simulations and planning of analysis and paper setup. NNS assisted with expertise in the CFD setup and grid generation along with developments on the grid deformation
 405 tool, to enable this irregular CFD case. All authors contributed in writing and editing this paper.

Competing interests. The authors declare that there have been no conflicts of interest during this study

Acknowledgements. The experimental work is supported by the Danish Energy Agency through the Energy Technology Development and Demonstration Program (EUDP), Grant No. 64016-0023. The supported project is named BLATIGUE: "Fast and efficient fatigue test of large wind turbine blade", and the financial support is greatly appreciated. We thank project manager and senior scientist Kim Branner
410 for introducing the need of this study and for good conversations throughout the project. A special thanks to the Structural Design and Testing team (SDaT) of DTU Wind Energy, specifically to Peter Berring, Steen Hjelm Madsen, Sergei Semenov and Mareen Tiedemann, who planned and conducted the experiments, is also in order. Additionally, the work is supported by Innovation Fund Denmark through the Industrial PhD program, Case No. 7038-00256B, with the project "Advanced methods for blade MOnitoring UNder full-scale Testing" (AMOUNT) and the financial support is highly appreciated.

415 References

- Bechmann, A., Sørensen, N. N., and Zahle, F.: CFD simulations of the MEXICO rotor, *Wind Energy*, 14, 677–689, 2011.
- Branner, K.: Large Scale Facility, <https://www.vindenergi.dtu.dk/english/Research/Research-Facilities/Large-Scale-Facility>, 2020.
- Galinos, C.: Aeroelastic Analysis of Olsen Wings 14 . 3m Blade - BLATIGUE Project , Tech. Rep. September, 2017.
- Greaves, P. R.: Fatigue Analysis and Testing of Wind Turbine Blades, Ph.D. thesis, Durham University, 2013.
- 420 Greaves, P. R., Dominy, R. G., Ingram, G. L., Long, H., and Court, R.: Evaluation of dual-axis fatigue testing of large wind turbine blades, *Proceedings of the Institution of Mechanical Engineers Part C-journal of Mechanical Engineering Science*, 226, 1693–1704, 2011.
- Heinz, J. C.: Partitioned Fluid-Structure Interaction for Full Rotor Computations Using CFD, Ph.D. thesis, 2013.
- Horcas, S. G., Madsen, M., Sørensen, N. N., and Zahle, F.: Suppressing Vortex Induced Vibrations of Wind Turbine Blades with Flaps, *Springer Tracts in Mechanical Engineering*, pp. 11–24, 2019.
- 425 Hunt, J. C. R., Wray, A. A., and Moin, P.: Eddies, streams, and convergence zones in turbulent flows, *Studying Turbulence Using Numerical Simulation Databases*, pp. p 193–208, 1988.
- Jonkman, JM, B. M. J.: FAST User’s Guide, Tech. rep., National Renewable Energy Laboratory, National Renewable Energy Laboratory Golden, Colorado, 2005.
- Larsen, T. and Hansen, A.: How 2 HAWC2, the user’s manual, Tech. rep., Risø National Laboratory, 2007.
- 430 Madsen, H. A., Larsen, T. J., Pirrung, G. R., Li, A., and Zahle, F.: Implementation of the Blade Element Momentum Model on a Polar Grid and its Aeroelastic Load Impact, *Wind Energy Science Discussions*, 2019, 1–43, <https://doi.org/10.5194/wes-2019-53>, <https://www.wind-energ-sci-discuss.net/wes-2019-53/>, 2019.
- Malhotra, P., Hyers, R., Manwell, J., and McGowan, J.: A review and design study of blade testing systems for utility-scale wind turbines, *Renewable and Sustainable Energy Reviews*, 16, 284–292, <https://doi.org/10.1016/j.rser.2011.07.154>, <http://linkinghub.elsevier.com/retrieve/pii/S1364032111004011>, 2012.
- 435 Menter, F. R.: Zonal Two Equation Kappa-Omega Turbulence Models for Aerodynamic Flows, 1993.
- Michelsen, J.: Basis3D - A Platform for Development of Multiblock PDE Solvers., Tech. rep., Risø National Laboratory, 1992.
- Michelsen, J.: Block Structured Multigrid Solution of 2D and 3D Elliptic PDE’s., Tech. rep., Technical University of Denmark, 1994.
- Montgomerie, B.: Drag Coeficient Distribution on a Wind at 90 Degrees to the Wind, Tech. rep., ECN, 1996.
- 440 Nieslony, A.: Rainflow Counting Algorithm - Very fast rainflow cycle counting for MATLAB, <http://www.mathworks.com/matlabcentral/fileexchange>, 2010.
- Pointwise, I.: Pointwise User Manual, <http://www.pointwise.com/doc/user-manual/index.html>, 2017.
- Post, N.: Fatigue Test Design: Scenarios for Biaxial Fatigue Testing of a 60-Meter Wind Turbine Blade, Tech. rep., National Renewable Energy Laboratory, National Renewable Energy Laboratory Golden, Colorado, 2016.
- 445 Shen, W., Michelsen, J., Sørensen, N., and Sørensen, J.: An improved SIMPLEC method on collocated grids for steady and unsteady flow computations, *Numerical Heat Transfer Part B: Fundamentals*, 43, 221–239, 2003.
- Sørensen, N., Michelsen, J., and Schreck, S.: Navier-Stokes predictions of the NREL phase VI rotor in the NASA Ames 80 ft × 120 ft wind tunnel, *Wind Energy*, 5, 151–169, 2002.
- Sørensen, N. N. and Schreck, S.: Transitional DDES computations of the NREL Phase-VI rotor in axial flow conditions, *Journal of Physics: Conference Series*, 555, 012 096, 2014.
- 450

- Sørensen, N. N., Zahle, F., Boorsma, K., and Schepers, G.: CFD computations of the second round of MEXICO rotor measurements, *Journal of Physics: Conference Series*, 753, 022 054, 2016.
- Spalart, P., Jou, W.-H., Strelets, M., and Allmaras, S.: Comments on the Feasibility of LES for Wings, and on a Hybrid RANS/LES Approach, 1997.
- 455 Sørensen, N. N.: General purpose flow solver applied to flow over hills., Ph.D. thesis, 1995.
- Sørensen, N. N.: HypGrid2D. A 2-d mesh generator, Tech. rep., Risø National Laboratory, 1998.
- Timmer, W. A.: Aerodynamic characteristics of wind turbine blade airfoils at high angles-of-attack, *Journal of Physics: Conference Series*, TORQUE, 2010.
- Travin, A., Shur, M., Strelets, M., and Spalart, P. R.: Physical and numerical upgrades in the Detached-Eddy Simulation of complex turbulent
460 flows, *Fluid Mechanics and Its Applications*, 65, 239–254, 2004.
- White, D.: New Method for Dual-Axis Fatigue Testing of Large Wind Turbine Blades Using Resonance Excitation and Spectral Loading, Tech. rep., National Renewable Energy Laboratory, National Renewable Energy Laboratory Golden, Colorado, 2004.
- Woolam, W. E.: Drag coefficients for flat square plates oscillating normal to their planes in air Final report, 1968.
- Zhou, H. F., Dou, H. Y., Qin, L. Z., Chen, Y., Ni, Y. Q., and Ko, J. M.: A review of full-scale structural testing of wind turbine blades,
465 *Renewable and Sustainable Energy Reviews*, 33, 177–187, <https://doi.org/10.1016/j.rser.2014.01.087>, 2014.
- Øye, S.: FLEX4 Simulation of Wind Turbine Dynamics, *Proceedings of 28th IEA Meeting of Experts Concerning State of the Art of Aeroelastic Codes for Wind Turbine Calculations*, Lyngby, 1996, 1996.