

We sincerely thank both reviewers for thoroughly reading the manuscript and for their positive and constructive feedback. Please find our revised manuscript with following changes made:

Page 1, abstract: Comment added on the comparison between load estimations and observed failure statistics to address a comment by reviewer #1.

Page 2, line 29: Typo corrected.

Page 2, line 32f: Description of bathtub curve reformulated as suggested by reviewer #1.

Page 7, line 132ff: Sentence rephrased as suggested by reviewer #2.

Page 8, line 153: Grammatical correction.

Page 9, line 165: Introduced the variable N_e as suggested by reviewer #2.

Page 9, line 175: Symbol for row spacing corrected as suggested by reviewer #2.

Page 11, line 208ff: As suggested by reviewer #2, we have added a more recent reference on the O&M costs of offshore wind turbines and we have additionally added a more suitable reference for the main bearing repair cost by the same author.

Page 12f, line 223ff: Comment added on the choice of distribution functions for sampling the input variables during the training process as suggested by both reviewers.

Page 15, line 276f: Comment added on train/test split as suggested by reviewer #1.

Page 20, Figure 20: Curve of figure changed to a dashed line as suggested by reviewer #2.

Page 21, line 324 ff: Discussion on simulation results clarified as suggested by reviewer #1.

Page 21, line 338 ff: Further clarification and extension of comparison between simulations and failure observations as suggested by reviewer #1.

Page 22, line 350 ff: Comment added on amount of expected versus observed failure rate and clarification added for why more data is required as suggested by reviewer #1.

Page 22, line 373f: Rephrased conclusion to avoid confusion.

Page 22, line 375: In response to first comment by reviewer #1, we added a comment on possible connection between simulations and failure records in the conclusion as well.

A surrogate model approach for associating wind farm load variations with turbine failures

Laura Schröder¹, Nikolay Krasimirov Dimitrov¹, and David Robert Verelst¹

¹DTU Wind Energy, Risø Campus, Frederiksborgvej 399, 4000 Roskilde, Denmark

Correspondence: Laura Schröder (lausc@dtu.dk)

Abstract.

In order to ensure structural reliability, wind turbine design is typically based on the assumption of gradual degradation of material properties (fatigue loading). ~~However~~Nevertheless, the relation between the wake-induced load exposure of turbines and the reliability of their major components has not been sufficiently well defined and demonstrated. This study suggests a methodology that makes it possible to correlate loads with reliability of turbines in wind farms in a computationally efficient way by combining physical modeling with machine learning. It can be used for estimating the current health state of a turbine and enables a more precise prediction of the "load budget", i.e. the effect of load-induced degradation and faults on the operating costs of wind farms. The suggested approach is demonstrated on an offshore wind farm for comparing performance, loads and lifetime estimations against recorded main bearing failures from maintenance reports. The validation of the estimated power against the 10-min SCADA power signals shows that the surrogate model is able to capture the power performance relatively well with a 1.5% average error in the prediction of the Annual Energy Production (AEP). It is found that turbines positioned at the border of the wind farm with a higher expected AEP are estimated to experience earlier main bearing failures. However, a clear connection between the load estimations and failure observations could not be confirmed in this study. Finally, the analysis stresses that more failure data is required in future work to enable statistically significant associations of the observed main bearing lifetimes with load exposures across the wind farm, and to validate and generalize the suggested approach and its associated findings.

1 Introduction

1.1 Motivation

For the past decades, wind energy has been one of the world's fastest-growing sources of renewable energy, and it is expected to show a similar trend of growth in the future. The development of wind energy with increased wind turbine size and rated capacity has a significant influence on the Operation and Maintenance (O&M) costs (Gonzalez et al., 2016). Together with poor site accessibility as for offshore installations where wind turbines might be inaccessible for 4-5 months per year (Van Bussel and Zaaier, 2001), failures are causing severe consequences in terms of downtime and maintenance costs (Bangalore and Patriksson, 2018). Therefore, optimizing the wind farm operation by improving performance and reliability in order to mini-

25 mize the Levelized Cost of Energy (LCoE) is gaining more and more importance. The O&M costs of wind turbines amount to
around 25% of the LCoE for onshore wind turbines and 35% for offshore wind turbines (Dinwoodie et al., 2012). For reducing
the O&M costs, monitoring and predicting the condition of the turbine's components in terms of operational health, material
degradation and remaining lifetime plays an important role. Improving the detection rate of a monitoring system for blades,
drive train, tower and grout from 60% to 99% for instance results in ~~an~~ an increase of lifetime levelized savings by 32% (May
30 et al., 2015).

Most current wind turbine maintenance strategies are time-based and assume a reliability degradation dependent on the
system age (Reder and Melero, 2018). Throughout the lifetime of a turbine, its failure rate is assumed to follow ~~the so-called~~
~~'bathtub curve'~~ a Weibull distribution with a higher failure frequency in the first ~~year~~ years of operation, followed by a longer
period of a lower constant failure rate. Towards the end of life, an increasing failure rate can be observed again due to wear and
35 damage accumulation caused by fatigue loading (Mudholkar and Srivastava, 1993) (Hahn et al., 2007).

However, the relation between the load exposure of turbines in a wind farm and their component reliability has not been
sufficiently well defined and demonstrated. Characterizing this relation would enable to assess the current health state of a
turbine and help to better understand the effect of load-induced degradation and faults on the operating costs of wind farms.
Especially for offshore wind farms where failures can lead to high downtime, this plays an important role for reducing the
40 LCoE.

1.2 Objective

The objective of the present paper is two-fold:

- Firstly, the aim is to suggest a methodology that makes it possible to investigate the correlation between loads and
component reliability of turbines in wind farms, by combining data (10-minute averages from a SCADA system) and
45 physical modeling (HAWC2 aeroelastic load simulations) with machine learning.
- Secondly, the suggested approach is demonstrated on a case study to investigate whether the loading conditions can be
clearly associated with the observed reliability of the main bearing.

1.3 Background and related work

Information about the turbine reliability can be derived either by modeling structural reliability parameters (e.g. failure fre-
50 quency, likelihood of observing failure over a reference period) or by using collected data from inspection and maintenance
reports (e.g. observed failure rates, observed time to failure). Opposed to the assumption that turbine reliability only decreases
with operational time, several studies have demonstrated the effect of meteorological conditions on the turbine reliability, such
as Reder and Melero (2016), Tavner et al. (2006). Also example studies of the influence of wake effects on the turbine reli-
ability can be seen in Kim et al. (2012) and Huang and Chiang (2006). Previous work aimed at defining a relationship between
55 fatigue and extreme loading conditions on a turbine and its reliability can be found in Colone et al. (2018) and Scott et al.
(2012). Colone et al. (2018) modeled the impact of turbulence induced loads on the fatigue reliability of offshore wind turbine

monopiles. In Scott et al. (2012) the damage effect of extreme and transient loads on the drivetrain reliability is estimated. However, these studies focus on modeling the reliability, rather than investigating observed failure rates from measurement data. Therefore, the present paper aims at suggesting a methodology for modeling various wake-induced loads, performance and estimated lifetime, and comparing it against measured failure rates and times to failure. The suggested approach can be used for modeling various performance and load variables under different operating conditions.

Modeling wake-induced loads in wind farms is a crucial step for fatigue load assessments both in the design process and during the operational phase of a wind farm where load measurements are costly and therefore rarely conducted. Carrying out aeroelastic simulations each time a load assessment is required is impractical. Therefore, various methods have been developed to reduce the amount of computations required. A popular approach is the use of so-called surrogate models which are reduced-order models that are trained on a limited number of aeroelastic simulations. Once the surrogate model has been trained, multiple site-specific load assessments at arbitrary sites can be obtained at a low computational cost and without the need of new aeroelastic simulations. Examples are e.g. Toft et al. (2016) and Müller et al. (2017) which propose a methodology based on response surface (RS) for site-specific load estimations. Teixeira et al. (2017) demonstrate the use of Kriging surfaces for fatigue load estimations of offshore wind turbines.

These approaches focus solely on one surrogate model and use a relatively small variable space. In Dimitrov et al. (2018) the surrogate model framework is expanded with the motivation to fully characterize the wind field conditions, as well as to enable comparing different surrogate models within the framework. Based on this framework, a benchmark of different surrogate models in Schröder et al. (2018) has shown that an Artificial Neural Network (ANN) based surrogate model outperforms other methods using PCE and RS in terms of model accuracy, computational time as well as convergence stability.

The above mentioned approaches are only applicable for estimations on single turbines. In Dimitrov (2019) the surrogate modeling framework is extended in order to estimate wake-induced loads for a wind farm with arbitrary layout. In this approach the number of simulations required for modeling different wake conditions is reduced by parametrizing the wake-effects. This method has been demonstrated in a case study on the Horns Rev I wind farm (Galinos et al., 2016) and further validated against measurement data in Dimitrov and Natarajan (2019). In the present study, the before mentioned wind farm surrogate modeling framework is expanded for estimating further performance and lifetime parameters under additional operating condition, and its predictions are compared against observed failures.

2 Methodology

The suggested methodology for comparing wake-induced loads against the component reliability of turbines is illustrated in Figure 1. It can be used to estimate various performance, loading and lifetime characteristics of a wind farm. The approach can be applied to any wind farm with arbitrary layout and turbine type as long as data recorded from the Supervisory Control And Data Acquisition (SCADA) system are available together with observed failure events, e.g. from inspection and maintenance reports. The framework can be split into six main steps which are more thoroughly described in the following sections:

1. Define variable input space and create samples \mathbf{X}_1 from predefined distributions and boundaries

- 90 2. Create high-fidelity simulation database for normal operation $\mathcal{S}_1(\mathbf{X}_1)$, to be used as training inputs for a surrogate model
3. Train a surrogate model $M(\mathbf{X})$ (an Artificial Neural Network, ANN) mapping undisturbed environmental conditions to load and power outputs
- 95 4. Obtain site-specific load and power estimations under normal operating conditions, $M(\mathbf{X}_{site})$, by sampling the surrogate model over the joint distribution of site-specific environmental conditions \mathbf{X}_{site}
- (a) Establish a site-specific joint probability distribution of undisturbed wind conditions by analyzing measured data
 - (b) Carry out a Monte Carlo (MC) simulation with the surrogate model, drawing samples \mathbf{X}_{site} from the site-specific joint distribution
5. Add other operational conditions (e.g. transients such as start-ups and shutdowns)
- 100 (a) Simulate scenarios with the selected (transient) operating conditions $\mathcal{S}_2(\mathbf{X}_2)$
- (b) Analyze SCADA data and fault and event logs to establish the annual frequency of the events
 - (c) Weight estimates according to the probabilities of the operational states w_1 and w_2 obtained from data
6. Compute a summary statistic \mathcal{S}_{sum} to be considered as a proxy for component reliability, and compare estimates against observed failure events

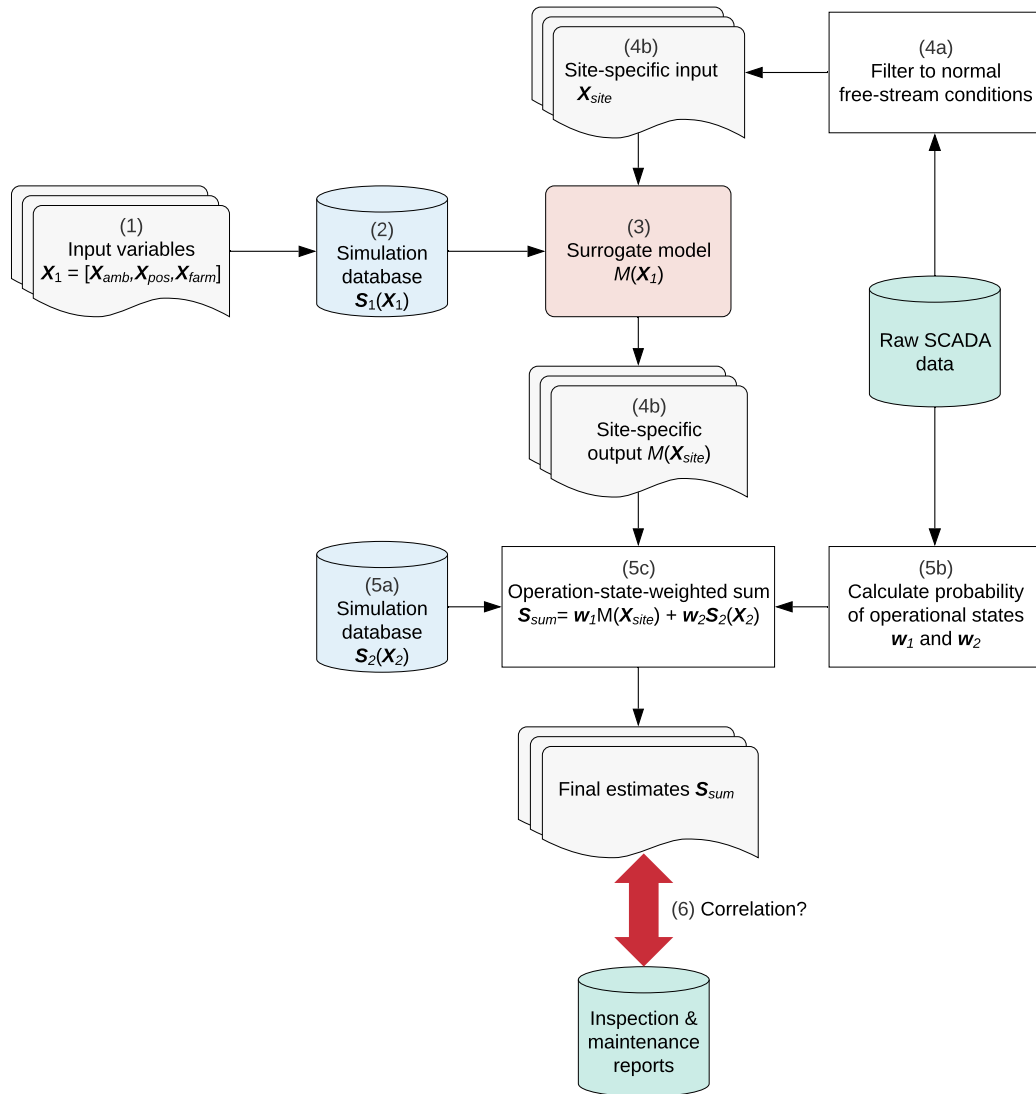


Figure 1. Methodology for estimating performance, loading condition and lifetime characteristics within a wind farm

105 2.1 Define variable input space and sample from predefined distributions

Selecting the variable input space is a crucial step in the creation of the simulation database. The performance and mechanical load variations of turbines within a wind farm mainly depend on the wake-induced turbulence. In this analysis, the wake-induced turbulence is characterized by variables that can be grouped into ambient conditions X_{amb} , turbine position X_{pos} , and wake-induced effects X_{farm} based on the study by (Dimitrov, 2019):

- 110 – $\mathbf{X}_{amb} = [u, \sigma_U, \alpha, H_s, T_p, \Delta]$ (mean wind speed, turbulence, wind shear, significant wave height, wave peak period and wind-wave misalignment)
- $\mathbf{X}_{pos} = [Z_w]$ (water depth)
- $\mathbf{X}_{farm} = [R_D, \gamma, N_{rows}]$ (row spacing, wake incidence angle and number of disturbing turbines)

The environmental variables from \mathbf{X}_{amb} and \mathbf{X}_{pos} include the most relevant factors that affect mechanical loads on both
 115 the nacelle and the foundation. The variables from \mathbf{X}_{farm} intend to describe the relative position of the wake source(s) with respect to the disturbed turbine, such that the model is generalized for arbitrary wind farm layouts. The choice of the three wake-induced variables of \mathbf{X}_{farm} is explained more in detail in (Dimitrov, 2019).

To make sure that the model is able to cover a wide range of conditions, the distributions and boundary functions of each variable have to be defined accordingly. Since some of the ambient variables are conditional on each other, the variable space is
 120 generated by sampling from their joint probability distribution using a Rosenblatt transformation (Rosenblatt, 1952) that takes into account the predefined distributions and bounding functions (Dimitrov, 2019).

It should be noted that the variable space should be defined specifically for each use case. For instance, if only nacelle load estimates are of interest, the variables for wave-induced loads (H_s, T_p, Δ) can be neglected since they most likely will not effect the final estimates.

125 2.2 Create aeroelastic simulation database

The set of sampled input variables which can be represented as $\mathbf{X} = [\mathbf{X}_{amb}, \mathbf{X}_{pos}, \mathbf{X}_{farm}]$ is then used for simulating the desired output variables $\mathcal{S}(\mathbf{X})$ (see Figure 2). For running aeroelastic time series simulations a wind flow model as well as a wake model that allows the superposition of multiple wake sources N_{rows} for modeling wake-induced effects is required. Furthermore, a structural model, aerodynamic model and the controller of the turbine needs to be included in order to model
 130 the structural response. In case this approach is applied to offshore turbines, also a hydrodynamic model and soil model (or alternatively a simplified apparent fixity model) is necessary for including the effects of hydrodynamic and soil forces.

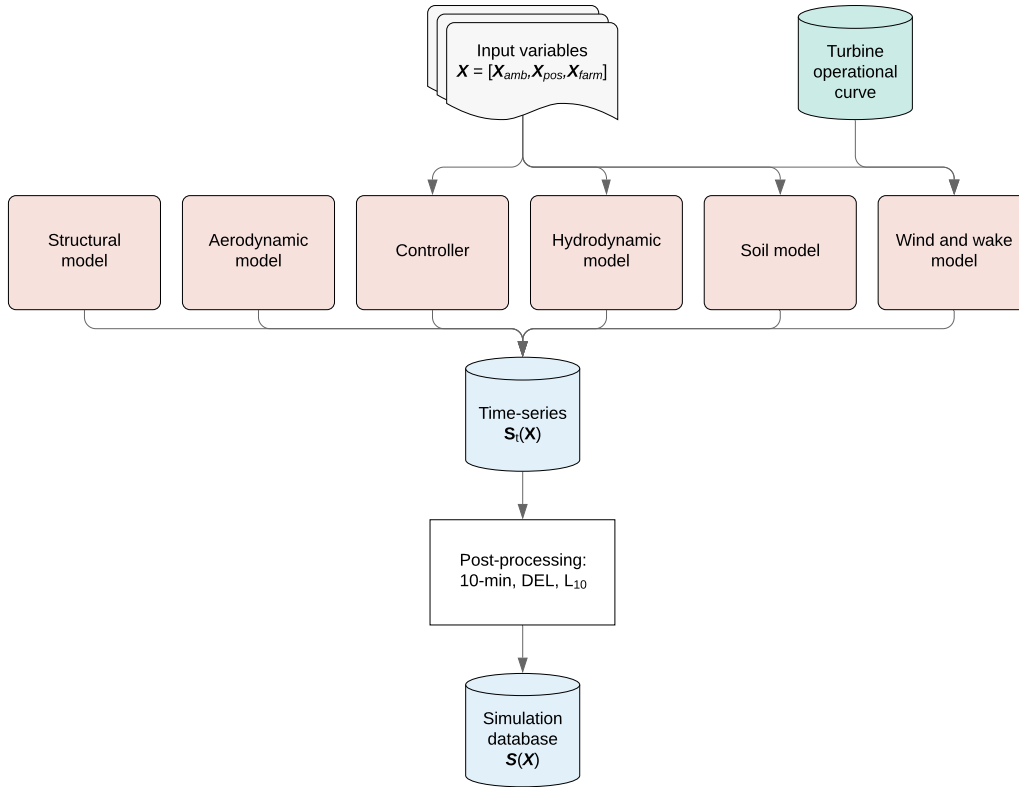


Figure 2. Process of aero-servo-hydro-elastic simulations using sampled input variables

Subsequently, the time series simulations $S_t(X)$ are post-processed in order to obtain ~~the desired quantity for assessing performance, lifetime or fatigue. Besides calculating 10-min statistics, the time series can be post-processed to lifetime indicators and~~ damage-equivalent fatigue loads (DELs) ~~and lifetime indicators for assessing performance, lifetime or fatigue.~~

135 By applying the Palmgren-Miner's rule the lifetime DEL can be formulated for a given Wöhler exponent m using the following equation:

$$DEL = \left(\frac{\int_u \int_\theta R_{eq}(u, \theta)^m n_{eq} p(u, \theta) du d\theta}{n_{eq,L}} \right)^{1/m} \quad (1)$$

with the 1-Hz equivalent fatigue load R_{eq} that is simulated e.g. for 600s corresponding to $n_{eq} = 1\text{Hz} \cdot 600\text{s} = 600$ equivalent cycles, the joint probability $p(u, \theta)$ of the wind speed u and wind direction θ and the number of equivalent cycles $n_{eq,L}$ corresponding to operation over the intended lifetime of the wind farm.

140

For assessing the component reliability of a main bearing, the fatigue life indicator L_{10} for which 10 % of the bearings would not survive (Calderon, 2015) can be calculated:

$$L_{10} = \frac{a_1 a_2 a_3 10^6}{60n} \left(\frac{C}{P_d} \right)^p \text{ [years]} \quad (2)$$

where n is the rotational speed, $a_i, i = 1, 2, 3$ are life correction coefficients, C is the dynamic bearing rating and $p = 10/3$ is the life exponent for roller bearings. A high value indicates a longer main bearing lifetime. The dynamic equivalent force P_d is defined as a hypothetical force resulting in the same lifetime as if acting on the bearing center as pure radial load (in case of radial bearing) or pure axial load (in case of thrust bearing) (NTN, 2009). It can be calculated using the radial force F_r and the axial force F_a as follows:

$$P_d = b_x F_r + b_y F_a \quad (3)$$

with calculation factors b_x and b_y that depend on the specific roller bearing type, i.e. if $\frac{F_a}{F_r} \leq 0.27$, then $b_x = 1$ and $b_y = 2.5$, otherwise if $\frac{F_a}{F_r} > 0.27$, then $b_x = 0.67$ and $b_y = 3.7$.

2.3 Train Surrogate model

Once the simulation database is created, the surrogate model can be trained using the set of input variable-variables \mathbf{X} and set of target variables $\mathcal{S}(\mathbf{X})$ as shown in Figure 3. As mentioned before, the selection of which variables should be included in the target set $\mathcal{S}(\mathbf{X})$ depends on the intention of the specific use case.

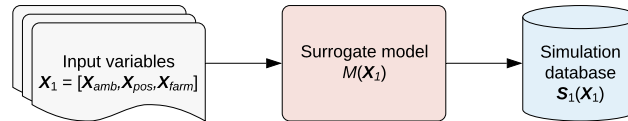


Figure 3. Schematic illustration of site-specific wind farm load estimation using surrogate model

The transfer function for mapping the input variables to the targets can be any type of regression model. However, this study suggests using feed-forward ANN, since they were found to be the most suitable method for the task of site-specific load estimations in terms of prediction time, accuracy and convergence robustness with smaller training samples (Schröder et al., 2018).

Feed-forward ANNs (Goodfellow et al., 2016) consist of multiple fully connected layers. In each layer the input \mathbf{x} is transformed linearly to $\mathbf{z} = \mathbf{W}\mathbf{x} + \mathbf{b}$ with weight matrix \mathbf{W} and bias \mathbf{b} . After the result is passed through a non-linear activation function $\sigma(\mathbf{z})$, it will serve as input to the next layer $\mathbf{x}^{[i+1]} = \sigma(\mathbf{z}^{[i]}) = \sigma(\mathbf{W}^{[i]}\mathbf{x}^{[i]} + \mathbf{b}^{[i]})$. When training an ANN, the weight parameters \mathbf{W} and bias parameters \mathbf{b} can be estimated by minimizing the cost function $J(\mathbf{W}, \mathbf{b})$. The cost function is a measure

of the difference between the model prediction $g(\mathbf{W}, \mathbf{b}, \mathbf{x})$ and the observed output \mathbf{y} . When using a least-squares approach the
 165 cost function will can be calculated as shown in Equation 4, where N_e is the number of training samples.

$$J(\mathbf{W}, \mathbf{b}) = \sum_{i=1}^{N_e} (y_i - g(\mathbf{W}, \mathbf{b}, \mathbf{x}_i))^2 \quad (4)$$

2.4 Site-specific estimations using surrogate model

In order to deploy the trained surrogate model to give estimations for the desired offshore wind farm, a new input data set
 has to be generated that includes the site-specific ambient environmental conditions, as well as farm related parameters for the
 170 specific wind farm. Similarly as in Section 2.1, the ambient input variables X_{amb} are sampled with a Monte Carlo simulation
 using Rosenblatt transformation in order to construct the site-specific joint probability distributions with the wind direction θ
 being the first independent variable. The distributions of these ambient conditions can be obtained from any available measured
 or modeled source, such as SCADA data or a meteorological mast. Since the input variables X_{pos} and X_{farm} on the other
 hand depend on the turbine position within the wind farm, they have to be generated for each turbine separately. Regarding the
 175 wake-related input X_{farm} , the row spacing $N_{rows} R_D$, wake incident angle γ and number of upstream turbines N_{rows} have to
 be collected for each wind direction sector separately. The trained ANN is then applied using these input variables X_{amb} , X_{pos}
 and X_{farm} for estimating the output $S(X_{site})$. In case there are several lines of turbine rows upstream, the output is estimated
 for each equally-spaced turbine line and the most conservative estimate is selected. Algorithm 1 shows the implementation
 steps required for the above mentioned procedure. For a more detailed explanation of this approach including an implemented
 180 example case see Dimitrov (2019).

The estimations from the ANN are then simply summed up for each turbine. A probability-weighting of the samples is not
 necessary since they are already generated taking into account the probability distributions of the input space. The AEP of
 each turbine can be calculated using Equation 5 with the number of Monte Carlo samples N_{sim} , estimated electrical power \hat{P}_i
 and the number of operating hours per year $N_{hours,y}$. The DEL values can be summed up according to Equation 6. Note, that
 185 before the summation, the estimations \hat{L}_i need to be inverted to 1-Hz fatigue range sums $L_{inv,i} = 600 \cdot \hat{L}_i^m$. Afterwards the
 sum can be converted back to lifetime DEL using the number of 1-Hz equivalent load cycles corresponding to 25 years $N_{sec,L}$.

$$AEP_{sum} = \sum_{i=1}^{N_{sim}} \frac{N_{hours,y}}{N_{sim}} \cdot \hat{P}_i \quad (5)$$

$$DEL_{sum} = \left(\frac{\sum_{i=1}^{N_{sim}} \frac{25 \cdot N_{10min,y}}{N_{sim}} \cdot \hat{L}_{inv,i}}{N_{sec,L}} \right)^{1/m} \quad (6)$$

Algorithm 1 Site-specific wind farm estimations

```
1: Initialize input  $X_{site}$  with dimension [ $N_{sample} \times 9$ ]  
2: Sample wind direction  $\theta$  and  $X_{amb}$  [ $N_{sample} \times 7$ ] from joint probability distribution obtained from SCADA data  
3:  $X_{site}(:, 1 : 6) \leftarrow X_{amb}$   
4: for each turbine  $i$  do  
5:    $X_{site,i}(:, 7) \leftarrow Z_w(i)$   
6:   for each output channel  $j$  do  
7:     for each wind direction sector  $k$  with range  $\Delta\theta$  do  
8:       Find indices  $i_k$  of  $\theta$  belonging to sector  $k$   
9:       for all possible lines of equally-spaced turbines  $l$  do  
10:         $X_{site,i,k,l}(i_k, 8) \leftarrow R_{D,l}$   
11:         $X_{site,i,k,l}(i_k, 9) \leftarrow \gamma_l$   
12:         $X_{site,i,k,l}(i_k, 10) \leftarrow N_{rows,l}$   
13:        Estimate output  $S_{i,j,k,l}$  with trained ANN using  $X_{site,i,k,l}$   
14:      end for  
15:      Select turbine line  $l$  that results in most conservative  $S_{i,j,k,l}$  (i.e. highest load, lowest power, shortest lifetime)  
16:    end for  
17:  end for  
18:  Sum up estimates  $S_{i,j,l}(X_{site,l})$  for output channel  $j$  of turbine  $i$   
19: end for=0
```

2.5 Add other operational conditions (e.g. transients)

190 Further scenarios can be included by simulating selected operating conditions (e.g. start-up, shutdown events). When summing up estimations for normal operation with these selected conditions, weights for the probability of the operational state need to be included in Equation 5 and Equation 6. The probability of the turbine operating in normal, start-up and shutdown condition varies per wind speed and can be extracted from SCADA data or fault and event logs. For transient events the probability-weighted AEP and DEL can be calculated using the number of transient events per year $N_{TR,y}$.

$$195 \quad AEP_{TR} = \sum_{i=1}^{N_{sim}} \frac{N_{TR,y}}{N_{sim}} \cdot \hat{P}_i \quad (7)$$

$$DEL_{TR} = \left(\frac{\sum_{i=1}^{N_{sim}} \frac{25 \cdot N_{TR,y}}{N_{sim}} \cdot \hat{L}_{inv,i}}{N_{sec,L}} \right)^{1/m} \quad (8)$$

It follows that the probability-weighted AEP and DEL for normal operation can be calculated using Equation 9 and Equation 10.

$$AEP_{normal} = \sum_{i=1}^{N_{sim}} \frac{N_{hours,y} - N_{TR,y}}{N_{sim}} \cdot \hat{P}_i \quad (9)$$

$$200 \quad DEL_{normal} = \left(\frac{\sum_{i=1}^{N_{sim}} \frac{25 \cdot (N_{10min,y} - N_{TR,y})}{N_{sim}} \cdot \hat{L}_{inv,i}}{N_{sec,L}} \right)^{1/m} \quad (10)$$

Finally, the weighted AEP and lifetime DELs can simply be added:

$$AEP_{tot} = AEP_{normal} + AEP_{TR} \quad (11)$$

$$DEL_{tot} = DEL_{normal} + DEL_{TR} \quad (12)$$

3 Example case

205 In the following case study the suggested methodology is applied to an offshore wind farm to assess which conditions might be correlated with the component reliability of a main bearing. Main bearings support the rotor shaft, which transfers the aerodynamic torque from the rotor into the gearbox, while reducing non-torque loads entering the gearbox (Calderon, 2015). With ~~up to \$450~~ around \$150,000 to \$300,000 per failure (Dvorak, 2013) unplanned bearing replacement costs are a significant part of the total yearly O&M expenses which can be approximately ~~\$750~~ 645,000 for an offshore 5MW turbine (~~Arena, 2012~~) (Stehly and Beiter, 2020).
210 (Stehly and Beiter, 2020). Figure 4 illustrates the loads considered in this study which are expected to have highest impacts on the main bearing.

The performance, fatigue loads and main bearing lifetime are estimated within the offshore wind farm and compared against the observed failure records. The data used in this study consist of a 5-year SCADA data set with a sampling rate of 10 minutes. The bearing type observed in this study is a SKF CARB toroidal roller bearing in non-locating position. The main bearing
215 failure records are available from inspection and maintenance reports for the same period. Figure 5 shows the normalized failure rate of the main bearing, i.e. the frequency at which the main bearing has failed. Figure 6 illustrates the inverted time to failure (TTF) $\frac{1}{TTF}$ where TTF is defined as the time between start of uptime and start of downtime of the main bearing. A higher inverted TTF therefore indicates earlier failures and shorter lifetimes of the main bearing.

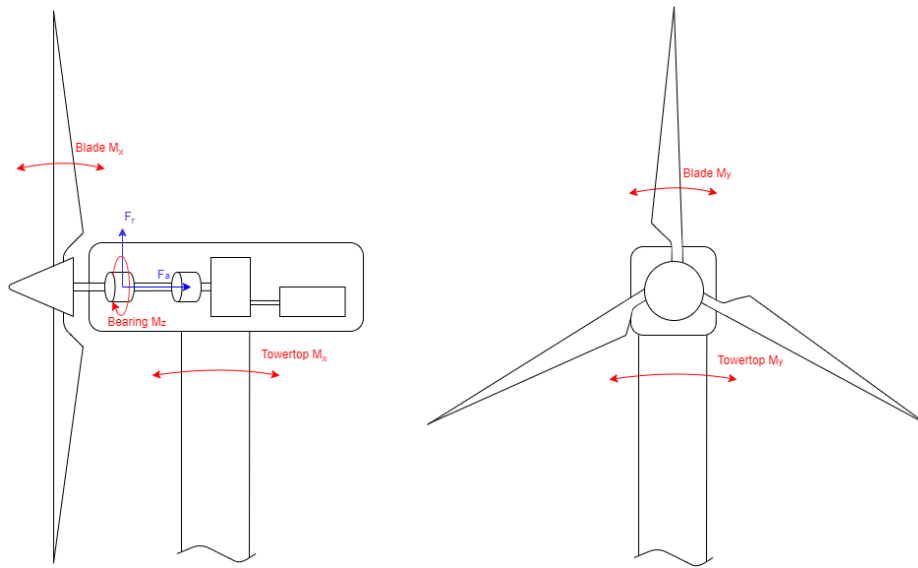


Figure 4. Wind turbine schematic including loads considered in this study: Blade-root bending moments M_x and M_y , tower-top bending moments M_x and M_y , bearing torsional moment M_z , main bearing axial force F_a and main bearing radial force F_r

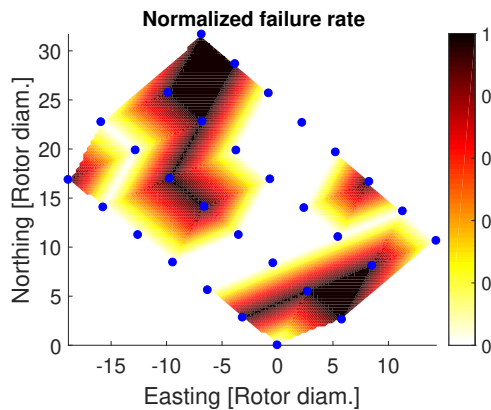


Figure 5. Observed normalized failure rate within wind farm from inspection reports

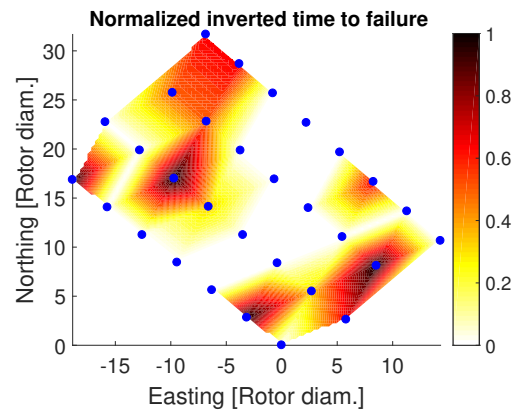


Figure 6. Observed normalized inverted time to failure within wind farm from inspection reports

3.1 Define variable input space and sample from predefined distributions

220 The variable space used for creating the simulation database in this analysis is generated following the approach described in chapter 2.1. The wind speed is sampled from a uniform distribution ranging between 4 m/s and 30 m/s covering the power production range of the wind turbine. For each wind speed sample the remaining variables are drawn from a uniform distribution as well with the selected boundaries as presented in Table 1. It should be noted, however, that the input variables can

225 be sampled following any suitable distribution function without influencing the power and load estimations of the resulting
model as the sampling only influences the training process. The boundary functions of the wind speed standard deviation is
based on the IEC class IA for offshore conditions and result in a range of 0.16 m/s to 3.89 m/s. The wind shear boundaries are
hard coded based on (Dimitrov et al., 2018). Regular waves are modeled as wind speed dependent deterministic function for
the significant wave height H_s and wave peak period T_p . However, the wind shear and wave conditions are not used as input
variables for the surrogate model later on, since the database is simulated using a constant wind shear of 0.14 and the study
230 only observes loads that are expected to not be influenced by waves. The boundaries for the wind wave misalignment Δ are
selected based on (Van Vledder, 2013). The selected boundaries of the water depth and row spacing is based on the wind farm
layout. Studies have shown that a turbine does not seem to experience wake condition with wind-wake angles of bigger range
than $\pm 25^\circ$ (Dimitrov, 2019) (Frandsen, 2007). Finally, up to four upstream turbines are considered for generating multiple
wake conditions based on (Dimitrov, 2019) showing that including more wake sources does not have a significant effect on the
235 resulting load estimations.

Variable	Lower bound	Upper bound	Reference
Wind speed u	4 m/s	30 m/s	Turbine type
Wind speed standard deviation σ_u	$0.04 \cdot u$	$0.16(0.75 \cdot u + 5.6)$	IEC class IA
Wind shear α	- 0.3	0.6	(Dimitrov et al., 2018)
Significant wave height H_s	2 m	4 m	(Johannessen et al., 2001)
Wave peak period T_p	8 s	12 s	(Johannessen et al., 2001)
Wind wave misalignment Δ	- 20°	20°	(Van Vledder, 2013)
Water depth Z_w	17 m	21 m	Farm layout
Row spacing R_D	4 D	13 D	Farm layout
Wind-wake angle γ	- 20°	20°	(Dimitrov, 2019) (Frandsen, 2007)
Number of wake rows N	0	4	(Dimitrov, 2019)

Table 1. Sampling conditions of variables considered for creating a simulation database including references used for the selection. D is Rotor diameter.

A 2000-point pseudo-Monte Carlo approach based on a low-discrepancy Halton sequence is used to generate the variable space. The resulting samples can be seen in Figure 7.

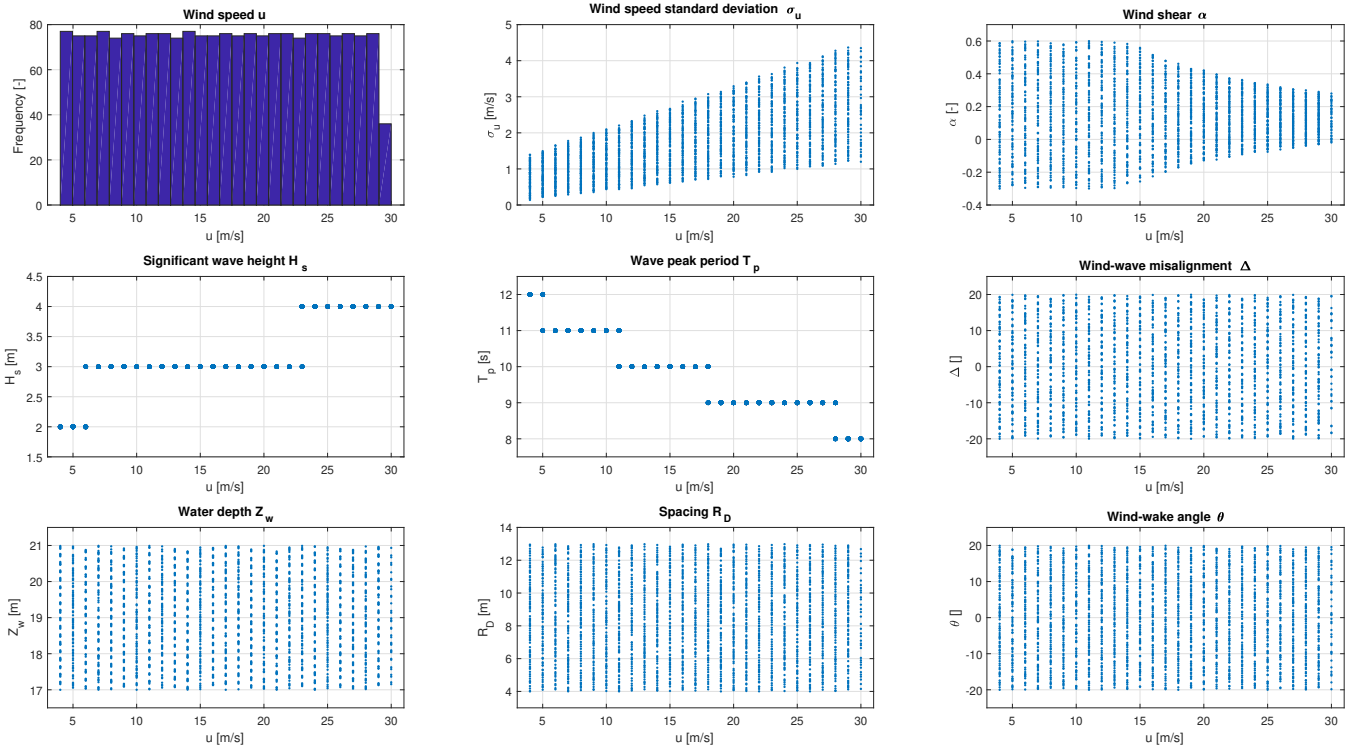


Figure 7. Sample distribution obtained using 2000-point pseudo-MC simulation of a 9-dimensional variable space $\{u, \sigma_u, \alpha, H_s, T_p, \Delta, Z_w, R_D, \gamma\}$. All variables are uniformly distributed within defined ranges.

3.2 Aeroelastic simulations for normal operation and transients

A total number of 32 output channels are simulated using the aeroelastic tool HAWC2 (Larsen and Hansen, 2019) (Madsen
240 et al., 2020) of the NREL offshore-5MW reference turbine with a jacket structure (Vorpahl et al., 2011). The simulation settings
and turbine model are chosen in order to be representative of the actual wind farm. Turbulence is included with the help of
so-called turbulence boxes which are "random realizations of three-dimensional, stationary and homogeneous turbulent wind
fields" (Dimitrov, 2019). Under exactly same conditions, the simulated time series will differ from realization to realization
due to this effect of the turbulence, which is called the seed-to-seed uncertainty. However, by using a large Monte Carlo
245 sample as in this approach the effect of seed-to-seed uncertainty is reduced (Dimitrov et al., 2018). For simulating the wake
effects the dynamic wake meandering (DWM) model (Larsen et al., 2008) is used. It models the wake effects by generating
three turbulence boxes for each simulation: The "ambient wind field over the rotor area" (Larsen et al., 2008) is introduced
by a standard turbulence box on which the wake deficit, introduced by a micro-turbulence box, is superimposed (Larsen and

Hansen, 2019). The relative position of these two turbulence boxes depends on the meandering of the wake which is introduced
250 by a large-scale turbulence field.

The simulations are carried out on each of the 2000 samples and repeated for three different yaw misalignments (-10°, 0°, +10°) including from zero up to four wake sources which results in a total of 30000 simulations for each output channel. These time series simulation are carried out for 600 s for normal operation and 250 s for start-up and shutdown operation. 19 start-up
255 simulations are carried out according to the standard DLC 3.1 (iec, 2019) for each wind speed ranging between 4 m/s and 22 m/s. Higher wind speeds are not considered as the controller would trigger an emergency shutdown due to an exceedance of the maximum rotor speed. 27 shutdown simulations are carried out according to DLC 4.1 (iec, 2019) for wind speeds between 4 m/s and 30 m/s.

Subsequently, the time series are post-processed in order to obtain the desired 10-min statistics, DELs and bearing lifetime. For calculating the DELs of the simulated loads the rainflow counting method (Matsuishi and Endo, 1968) is used with a
260 Wöhler exponent of 4 for the tower-top, 8 for the shaft and 10 for the blade-root. In order to calculate the lifetime indicator of the main bearing first the time series of the radial force on the main bearing is calculated using the simulated lateral and vertical forces:

$$F_r = \sqrt{F_{lateral}^2 + F_{vertical}^2} \quad (13)$$

With the radial force F_r the equivalent dynamic force on the main bearing P_d is calculated using Equation 3 and next the
265 lifetime L_{10} is calculated using Equation 2. A dynamic bearing rating of $C = 19600\text{kN}$ is used which is the recommended value for the specific bearing type with the specific inner diameter and mass based on the SKF handbook on roller bearings (SKF, 2018). A factor of $a_1 = 0.21$ is used corresponding to a 99% probability of surviving the estimated lifetime. The factor a_2 refers to the bearing material and is set to 1 based on (Harris, 2001). Finally, the factor a_3 representing the bearing condition, including lubrication and cleanliness conditions amongst other things, is set to 1 since the necessary information is not available.

270 3.3 Train and validate surrogate model (ANN)

The surrogate model is calibrated for estimating 11 output variables $\mathbf{S}(\mathbf{X})$ as shown in Figure 4. However, only estimations for the power, main bearing lifetime, torsional moment at the main bearing, and blade-root flapwise bending moment are presented in this paper since the remaining loads show similar resulting patterns.

Various ANN architectures have been trained and evaluated on the test set. After hyperparameter tuning the most suitable
275 settings as shown in Table 2 are selected. The data set of 30000 samples are divided into a 90% training, 5% validation, 5% testing set. [Since the number of samples is relatively large, using other ratios for the train/ test split did not affect the model performance.](#) The model parameters are estimated with error back-propagation using the adaptive moment estimation (Adam) (Kingma and Ba, 2014) as an adaptive learning rate optimization algorithm for minimizing the cost function $J(\mathbf{W}, \mathbf{b})$. Instead of calculating the cost function for the complete data set, at each iteration a mini-batch optimization is used in order to increase

280 computational efficiency and to achieve a more robust convergence. Furthermore, a regularization factor is included in the parameter estimations to avoid overfitting to the training data.

Model training (hyperparameters)		Model testing	
Number of hidden layers	3	R^2 Power P	0.996
Number of neurons per hidden layer	24	R^2 Bearing life L_{10}	0.989
Number of neurons in output layer	11	R^2 Bearing DEL M_z	0.946
Activation function	tanh	R^2 Blade-root DEL M_x	0.946
Weight initialisation	0.1		
Learning rate	0.07		
Regularization	0.02		
Number of epochs	400		
Mini batch size	4000		
Minimum R^2	0.99		
Adam - RMS prop	0.999		
Adam - Momentum	0.99		

Table 2. Hyperparameter of ANN used as surrogate model and accuracy of the model predictions on the test set

The model performance is then evaluated by calculating the accuracy of the model predictions on the test set (see Table 2). Figure 8 and Figure 9 show a one-to-one plot for the estimated power P and main bearing lifetime L_{10} on the test set against the simulation data from HAWC2.

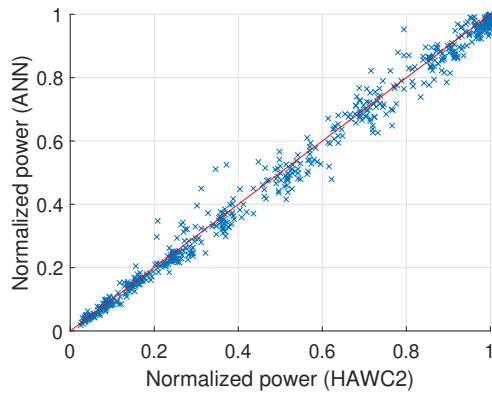


Figure 8. Normalized electrical power P estimated by ANN on test set with respect to normalized power simulated using HAWC2

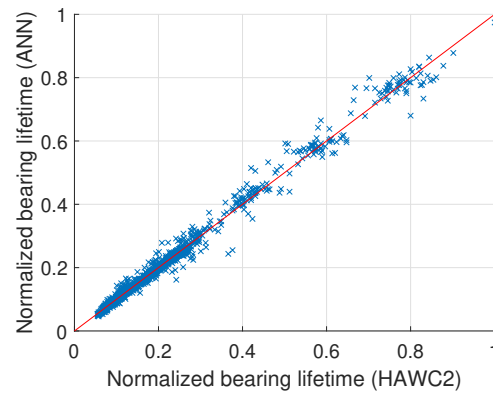


Figure 9. Normalized bearing lifetime L_{10} estimated by ANN on test set with respect to normalized bearing lifetime simulated using HAWC2

In order to exclude outliers from the SCADA data, the OpenOA filtering toolkit developed at NREL (Optis et al.) is applied. Figure 10 shows the probability of each wind direction sector that is obtained from the filtered free-stream SCADA data.

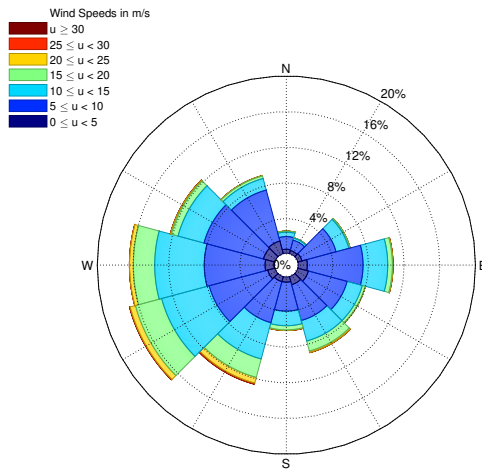


Figure 10. Site-specific wind rose calculated from free-stream SCADA data

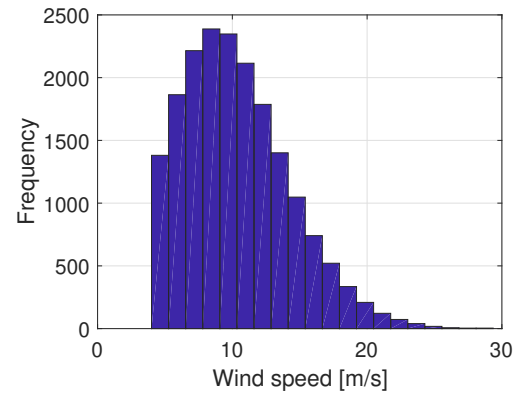


Figure 11. Site-specific wind speed sampled from Weibull distribution from free-stream SCADA data

For each wind direction sector a Weibull distribution is fit to the wind speed measurements and a lognormal distribution is fit per wind speed bin to the wind speed standard deviation measurements. The wind-wave misalignment which describes the difference between wind direction and wave direction of wind-generated wave can depend on the wind speed and significant wave height (Van Vledder, 2013). However, since the bearing in the rotor is almost not affected by the wave conditions the wind-wave misalignment is assumed to be normally distributed with a mean $\mu = 0$ and standard deviation $\sigma = 5$ based on presented distributions in (Van Vledder, 2013). The three above site-specific input variables of the environmental conditions X_{amb} are generated using a 20000-point pseudo Monte Carlo simulation based on Sobol sequences following the approach described in Section 2.4. The final input samples for the surrogate model are shown in Figure 11 for the wind speed, Figure 12 for the wind speed standard deviation and Figure 13 for the wind-wave misalignment.

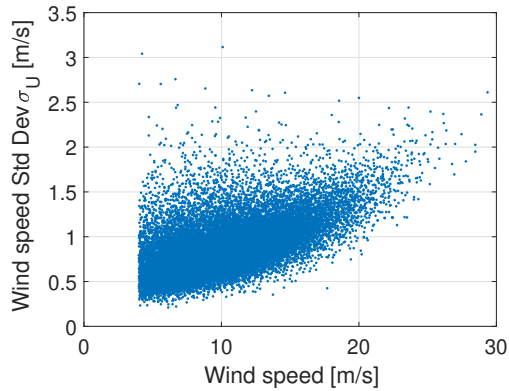


Figure 12. Sampled wind speed standard deviation taken from SCADA

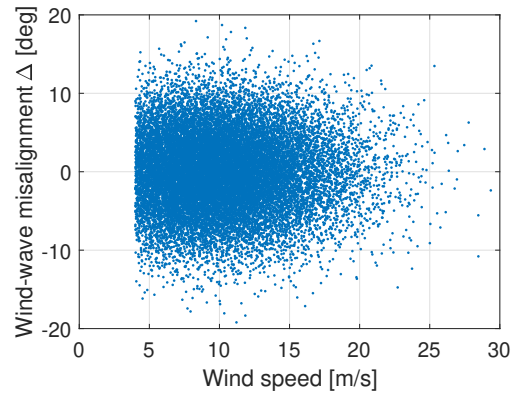


Figure 13. Sampled wind wave misalignment

For summing up the model predictions of both normal and transient operation, the model predictions are weighted according to their probability of operational state. Figure 15 shows the probabilities of start-up and shutdown events for an example turbine. The annual number of transients over the whole wind farm can be seen in Figure 14.

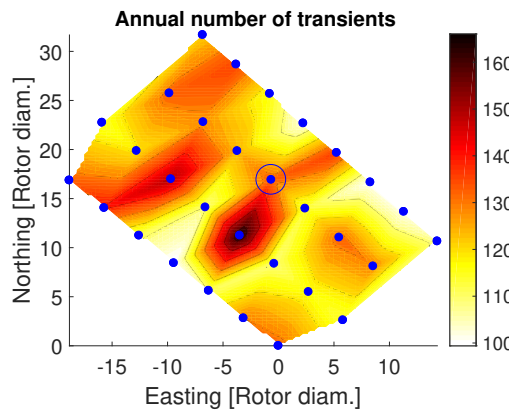


Figure 14. Number of start-up and shutdown events within wind farm from SCADA data

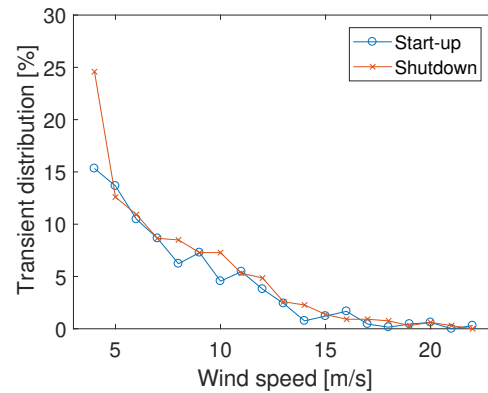


Figure 15. Example for percentage of start-up and shutdown events per wind speed for Turbine 19 (marked with blue circle in Figure 14)

300 3.5 Operation-state weighted sum

The final resulting probability-weighted outputs for the offshore wind farm for the AEP, main bearing lifetime, blade-root flapwise DEL and torsional bearing DEL are shown in Figure 16 to Figure 19. These results should be analysed in comparison with Figure 5 and Figure 6 which show the actual failure maps over the wind farm.

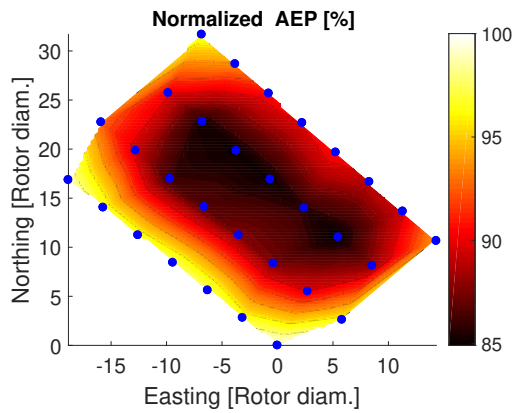


Figure 16. Estimated normalized AEP within wind farm for normal operation including start-up and shutdown events

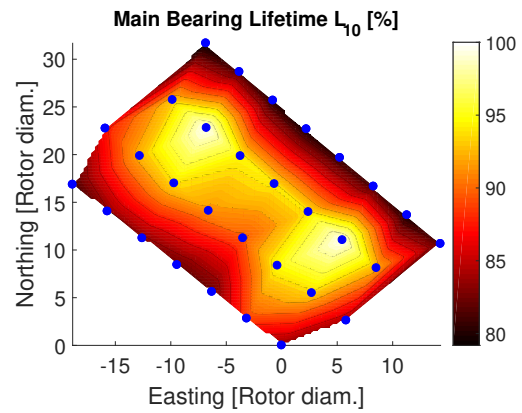


Figure 17. Estimated normalized bearing lifetime within wind farm for normal operation including start-up and shutdown events

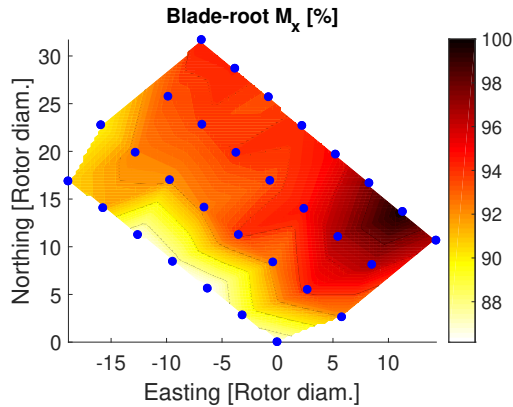


Figure 18. Estimated normalized Blade-root flapwise DEL within wind farm for normal operation including start-up and shutdown events

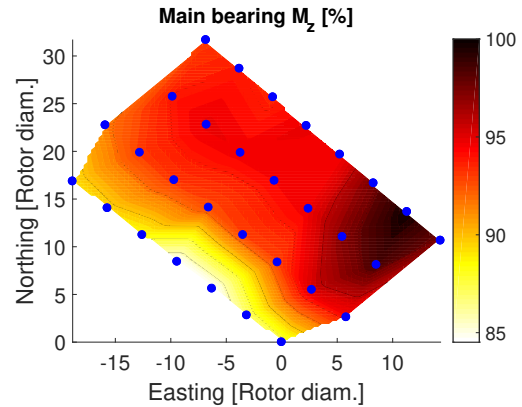


Figure 19. Estimated normalized DEL of torsional moment on main bearing within wind farm for normal operation including start-up and shutdown events

For validation purposes, the surrogate model is used to estimate the power time series of each turbine for a time period of 1 year under normal operation and compared against the measured power from the SCADA system (see Figure 20). The coefficient of determination R^2 of the power predictions for the single turbines ranges between 0.89 and 0.93 (see Figure 21). The power for the northernmost turbine could not be calculated since its measurement data was not available. The AEP is calculated for each turbine showing a relative error between the measured and the estimated normal behaviour AEP between 0.1 % and 3.4 % (see Figure 22). The mean relative error of the AEP estimation for all 29 turbines is 1.5 %.

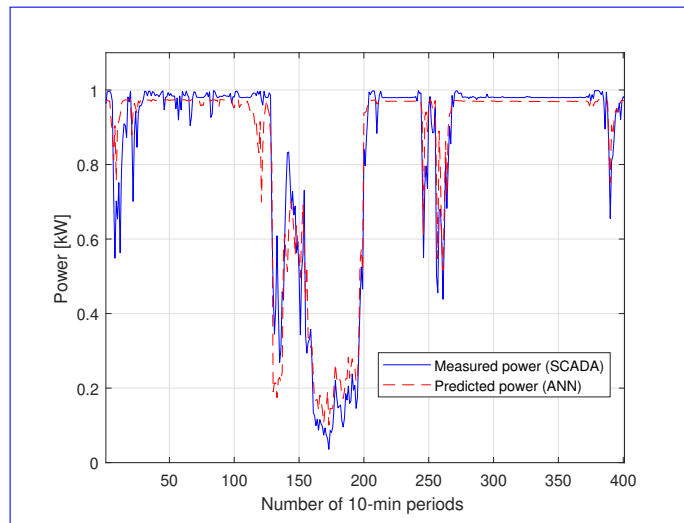


Figure 20. Comparison of measured power time series from SCADA data ([blue solid line](#)) and predicted time series from the ANN ([red dashed line](#)) for an example turbine

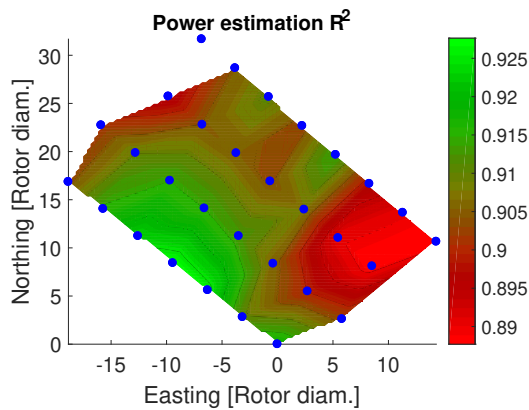


Figure 21. Coefficient of determination R^2 of power time series prediction under normal operation

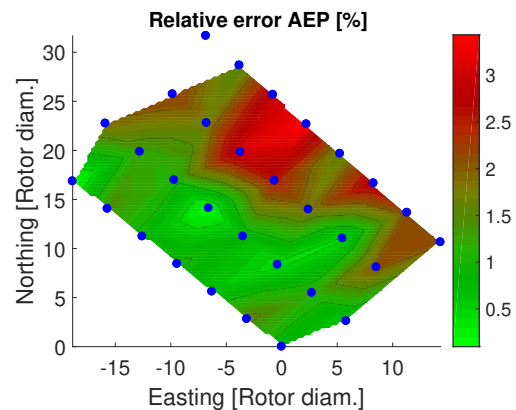


Figure 22. Relative error between measured AEP from SCADA data and estimated AEP within wind farm

310 4 Discussion

The results show that the ANN is able to accurately model the simulated power, DEL and L_{10} with a coefficient of determination R^2 between 0.95 and 0.99. The validation of the estimated time series against the measured 10-min SCADA statistics shows that the power is modeled with a mean prediction error of 1.5 % and an average R^2 value of 0.91. The time series predictions show a consistent offset at rated power (see Figure 20). A reason for the difference might be that a generic model

315 had to be used since the more accurate model by the turbine manufacturer was not available. Furthermore, higher uncertainty can be observed for the eastern turbines, i.e. the turbines which are more often experiencing wake conditions (see Figure 21).

The surrogate modeling approach discussed in this study includes several assumptions and uncertainties which are propagated to the final predictions. The uncertainties in the final model predictions depend on various matters, such as the defined variable space, the wake model used, the selection of environmental input parameters, assumptions for modeling the wake-
320 effects in the surrogate model and the surrogate model performance. Investigating different model setups has shown that the results are sensitive towards the way how the wake is observed (i.e. size of wind direction sector) and how wake is defined as input variables (i.e. considering upstream turbines resulting in most conservative estimates). Despite these uncertainties and data limitations, the model is able to capture the relative differences in the power and fatigue load accumulation over the wind farm well. ~~Finally, although the lifetime L_{T0} is a rather simplistic indicator and misses additional condition information (e.g. about the lubrication status), the lifetime estimations () do not contradict the observed main bearing lifetime ().~~

~~The DEL predictions of the blade-root flapwise bending moment and the torsional bearing moment in Figure 18 and Figure 19 seem to increase when moving east within the farm. This is expected as those turbines are experiencing multiple wake conditions with prevailing wind from southwest.~~ The model predictions in Figure 16 show that the highest AEP is observed at turbines positioned in the outer border of the wind farm. This makes sense as well because these turbines are more likely to
330 experience free-stream conditions and therefore higher wind speeds as compared to inner positioned turbines. ~~At the same time, Comparing the AEP map (Figure 16) with the main bearing lifetime predictions (Figure 17), it can be seen that those mentioned outer turbines with increased AEP are estimated to have a shorter bearing lifetime (). Additionally, the DEL predictions of the blade-root flapwise bending moment and the torsional bearing moment in and seem to increase when moving east within the farm main bearing lifetime. This is expected as those turbines are experiencing multiple wake conditions with prevailing wind from southwest.~~ This indicates the possible correlation that turbines within a wind farm that are located at positions of higher
335 expected AEP might be prone to experience earlier main bearing failures as compared to the rest of the wind farm.

~~At first sight, it is difficult to see a clear connection between model predictions and the failure maps. However,~~
~~Although the lifetime L_{T0} is a rather simplistic indicator and misses additional condition information (e.g. about the lubrication status), the lifetime estimations (Figure 17) do not contradict the observed main bearing lifetime (Figure 6 indicates that most premature main bearing failures have occurred at the);~~ While turbines at the outer border of the wind farm which
340 corresponds to turbines with a higher AEP and lower estimated bearing lifetime L_{T0} . This possible correlation shows that turbines located in positions within the wind farm where the AEP is expected to be higher might be prone to experience earlier main bearing failures as compared to the rest of the wind farm are estimated to have a shorter main bearing lifetime, most turbines that were observed to have a premature failure already within the first three years of operation are positioned on the
345 border as well with only one exception. A comparison of the observed failure rates (Figure 5) with the DEL estimations does not show any clear patterns or correlations, except that two out of 12 turbines with higher failure rates are positioned in the region of highest estimated Blade-root DEL M_x and Main bearing DEL M_z . Furthermore, there ~~might be an influence by the torsional bearing DEL M_z on the failure rate. The main bearings of turbines with a higher M_z show higher failure rates. does not seem to be an obvious connection between the prevailing wind direction of around 240° (Figure 10) and the failures.~~

350 The reference value by SKF for the required L10 lifetime of a wind turbine roller bearing ranges between 30,000 and 100,000 hours of operation (SKF, 2018), i.e. that 10% of a sufficiently large number of identical main bearings under identical conditions are expected to fail within the first 3.4 to 11.4 years of operation. Given that already 40% of the turbines of the studied wind farm have experienced a main bearing failure by the 6th year of operation, the observations might indicate an unexpectedly high failure rate. However, when interpreting the results and drawing conclusions about possible correlations, it is also important to keep in mind the ~~limitation~~-limitations of the model and ~~the~~-data. Since the number of recorded failures is rather limited, it might not be representative for the underlying main bearing failure statistics. More observations are necessary in order to demonstrate a statistically significant difference in the averages of the main bearing lifetime (mean TTF) per turbine or subgroup of turbines. It becomes clear, that more failure data from the same wind farm as well as from other wind farms is needed to validate and generalize the possible relationships. Furthermore, the observed main bearing failures are not necessarily fatigue-induced and might have been caused by other factors that are not included in the analysis (e.g. faults during manufacturing process). Finally, the case study shows model estimations for a limited amount of operational states, i.e. normal operation and start-up and shutdown behaviour. Other operational states or wind conditions could have an impact on the main bearing reliability (i.e. parking, curtailment, wake steering, wind gusts, faults, emergency shutdown).

5 Conclusions

365 This study presents a procedure that makes it possible to correlate performance and loading conditions within a wind farm with its component reliability in a computationally efficient way. It can be used for assessing the health state of turbines in a wind farm and for getting a better understanding and definition of how fatigue loading can lead to failures. In the demonstration on an offshore wind farm with the focus on observed main bearing failures, the following was found:

- 370 – The ANN is able to predict the electrical power, blade-root flapwise DEL, torsional bearing DEL and main bearing lifetime accurately with a R^2 value of higher than 0.95 compared to the simulated values.
- The validation of the estimated power time series against the 10-min SCADA power signals shows that the surrogate model is able to capture the power performance relatively well with a 1.5% average error in the AEP prediction.
- Turbines at the border of the wind farm are estimated to have a shorter bearing lifetime. These estimations ~~are supported~~ by do not contradict the observed bearing lifetime from inspection and maintenance reports.
- 375 – A clear connection between the load estimations and failure observations could not be confirmed.
- Further future work can expand the case study to more operating states which could affect the bearing reliability, such as parking conditions. Also, more valuable insights can be gained by including other types of data sources, e.g. SCADA alarms.

Finally, the analysis stresses that more failure data is needed in order to validate and generalize the suggested approach and its associated findings.

Data availability. The HAWC2 simulation database used for training a surrogate model is available at 10.11583/DTU.12245978. It contains the turbine model, HAWC2 input files, as well as the post-processed simulation results.

Author contributions. LS carried out the aeroelastic simulations, SCADA data processing, training of surrogate model and wind farm estimations, and wrote the paper. ND participated in the conceptual development, contributed with elements of the programming code, and
385 provided critical review. DV gave critical review and provided support for carrying out aeroelastic simulations.

Competing interests. The authors declare that they have no conflict of interest.

Acknowledgements. We would like to thank Vattenfall for the close collaboration and for sharing the operational data for this study.

References

- Ball and roller bearings, NTN corporation, http://www.ntnamericas.com/en/website/documents/brochures-and-literature/catalogs/ntn_2202-ixe.pdf, 2009.
- SKF Rolling bearing catalogue, Tech. rep., SKF Group, <https://www.skf.com/binary/77-121486/SKF-rolling-bearings-catalogue.pdf>, 2018.
- IEC 61400-1 Ed.3. Wind Turbines. Part 1: Design Requirements, Tech. rep., International Electrotechnical Commission: Geneva, 2019.
- Bangalore, P. and Patriksson, M.: Analysis of SCADA data for early fault detection, with application to the maintenance management of wind turbines, *Renewable energy*, 115, 521–532, 2018.
- Calderon, J. F. G.: Electromechanical drivetrain simulation, DTU Wind Energy, 2015.
- Colone, L., Natarajan, A., and Dimitrov, N.: Impact of turbulence induced loads and wave kinematic models on fatigue reliability estimates of offshore wind turbine monopiles, *Ocean Engineering*, 155, 295–309, 2018.
- Dimitrov, N.: Surrogate models for parameterized representation of wake-induced loads in wind farms, *Wind Energy*, 2019.
- Dimitrov, N. and Natarajan, A.: From SCADA to lifetime assessment and performance optimization: how to use models and machine learning to extract useful insights from limited data, in: *Journal of Physics: Conference Series*, vol. 1222, p. 012032, IOP Publishing, 2019.
- Dimitrov, N., Kelly, M., Vignaroli, A., and Berg, J.: From wind to loads: wind turbine site-specific load estimation using databases with high-fidelity load simulations, *Wind Energ. Sci. Discuss*, 2018.
- Dinwoodie, I., Quail, F., and McMillan, D.: Analysis of offshore wind turbine operation and maintenance using a novel time domain meteo-ocean modeling approach, in: *ASME Turbo Expo 2012: Turbine Technical Conference and Exposition*, pp. 847–857, American Society of Mechanical Engineers, 2012.
- Dvorak, P.: Establishing failure modes for bearings in wind turbines, Tech. rep., Windpower Engineering and Development, <https://www.windpowerengineering.com/establishing-failure-modes-for-bearings-in-wind-turbines/>, 2013.
- Frandsen, S. T.: Turbulence and turbulence-generated structural loading in wind turbine clusters, 2007.
- Galinos, C., Dimitrov, N., Larsen, T. J., Natarajan, A., and Hansen, K. S.: Mapping Wind Farm Loads and Power Production-A Case Study on Horns Rev 1, in: *Journal of Physics: Conference Series*, vol. 753, p. 032010, IOP Publishing, 2016.
- Gonzalez, E., Reder, M., and Melerio, J. J.: SCADA alarms processing for wind turbine component failure detection, in: *Journal of Physics: Conference Series*, vol. 753, p. 072019, IOP Publishing, 2016.
- Goodfellow, I., Bengio, Y., and Courville, A.: *Deep learning*, MIT press, 2016.
- Hahn, B., Durstewitz, M., and Rohrig, K.: Reliability of wind turbines, experiences of 15 years with 1,500 WTs, in: *Wind Energy*, in: *Proceedings of the Euromech Colloquium*, pp. 329–332, Springer-Verlag Berlin Heidelberg, 2007.
- Harris, T. A.: *Rolling bearing analysis*, John Wiley and sons, 2001.
- Huang, H. and Chiang, C.: Reliability worth assessment of distribution system with large wind farm considering wake effect, in: *2006 IEEE Power India Conference*, pp. 5–pp, IEEE, 2006.
- Irena, I.: *Renewable energy technologies: Cost analysis series*, Concentrating solar power, 2012.
- Johannessen, K., Meling, T. S., Hayer, S., et al.: Joint distribution for wind and waves in the northern north sea, in: *The Eleventh International Offshore and Polar Engineering Conference*, International Society of Offshore and Polar Engineers, 2001.
- Kim, H., Singh, C., and Sprintson, A.: Simulation and estimation of reliability in a wind farm considering the wake effect, *IEEE Transactions on Sustainable Energy*, 3, 274–282, 2012.
- Kingma, D. P. and Ba, J.: Adam: A method for stochastic optimization, arXiv preprint arXiv:1412.6980, 2014.

- 425 Larsen, G. C., Madsen, H. A., Thomsen, K., and Larsen, T. J.: Wake meandering: a pragmatic approach, *Wind Energy: An International Journal for Progress and Applications in Wind Power Conversion Technology*, 11, 377–395, 2008.
- Larsen, T. J. and Hansen, A. M.: How 2 HAWC2, the user's manual, target, 2, 2, 2019.
- Madsen, H. A., Larsen, T. J., Pirrung, G. R., Li, A., and Zahle, F.: Implementation of the blade element momentum model on a polar grid and its aeroelastic load impact, *Wind Energy Science*, 5, 1–27, 2020.
- 430 Matsuishi, M. and Endo, T.: Fatigue of metals subjected to varying stress, Japan Society of Mechanical Engineers, Fukuoka, Japan, 68, 37–40, 1968.
- May, A., McMillan, D., and Thöns, S.: Economic analysis of condition monitoring systems for offshore wind turbine sub-systems, *IET Renewable Power Generation*, 9, 900–907, 2015.
- Mudholkar, G. S. and Srivastava, D. K.: Exponentiated Weibull family for analyzing bathtub failure-rate data, *IEEE transactions on reliability*, 42, 299–302, 1993.
- 435 Müller, K., Dazer, M., and Cheng, P. W.: Damage assessment of floating offshore wind turbines using response surface modeling, *Energy Procedia*, 137, 119–133, 2017.
- Optis, M., Perr-Sauer, J., Philips, C., Craig, A. E., Lee, J. C., Kemper, T., Sheng, S., Simley, E., Williams, L., Lunacek, M., et al.: OpenOA: An Open-Source Code Base for Operational Analysis of Wind Power Plants, *Wind Energ. Sci*, 10.
- 440 Reder, M. and Melero, J.: A Bayesian Approach for Predicting Wind Turbine Failures based on Meteorological Conditions, in: *Journal of Physics: Conference Series*, vol. 1037, p. 062003, IOP Publishing, 2018.
- Reder, M. and Melero, J. J.: Assessing wind speed effects on wind turbine reliability, *Wind Europe Summit*, 2016.
- Rosenblatt, M.: Remarks on a multivariate transformation, *The annals of mathematical statistics*, 23, 470–472, 1952.
- Schröder, L., Dimitrov, N. K., Verelst, D. R., and Sørensen, J. A.: Wind turbine site-specific load estimation using artificial neural networks calibrated by means of high-fidelity load simulations, in: *Journal of Physics: Conference Series*, vol. 1037, p. 062027, IOP Publishing, 2018.
- 445 Scott, K., Infield, D., Barltrop, N., Coultate, J., and Shahaj, A.: Effects of extreme and transient loads on wind turbine drive trains, in: 50th AIAA Aerospace Sciences Meeting including the New Horizons Forum and Aerospace Exposition, p. 1293, 2012.
- Stehly, T. J. and Beiter, P. C.: 2018 Cost of Wind Energy Review, Tech. rep., National Renewable Energy Lab.(NREL), Golden, CO (United States), 2020.
- 450 Tavner, P., Edwards, C., Brinkman, A., and Spinato, F.: Influence of wind speed on wind turbine reliability, *Wind Engineering*, 30, 55–72, 2006.
- Teixeira, R., O'Connor, A., Nogal, M., Krishnan, N., and Nichols, J.: Analysis of the design of experiments of offshore wind turbine fatigue reliability design with Kriging surfaces, *Procedia Structural Integrity*, 5, 951–958, 2017.
- 455 Toft, H. S., Svenningsen, L., Moser, W., Sørensen, J. D., and Thøgersen, M. L.: Assessment of wind turbine structural integrity using response surface methodology, *Engineering Structures*, 106, 471–483, 2016.
- Van Bussel, G. and Zaaijer, M.: Reliability, availability and maintenance aspects of large-scale offshore wind farms, a concepts study, in: *Proceedings of MAREC*, vol. 2001, 2001.
- Van Vledder, G. P.: On wind-wave misalignment, directional spreading and wave loads, in: *ASME 2013 32nd International Conference on Ocean, Offshore and Arctic Engineering*, pp. V005T06A087–V005T06A087, American Society of Mechanical Engineers, 2013.
- 460 Vorpahl, F., Popko, W., and Kaufer, D.: Description of a basic model of the "UpWind reference jacket" for code comparison in the OC4 project under IEA Wind Annex XXX, Fraunhofer Institute for Wind Energy and Energy System Technology (IWES), Germany, 2011.