

Fast Yaw Optimization for Wind Plant Wake Steering Using Boolean Yaw Angles

Andrew P. J. Stanley, Christopher Bay, Rafael Mudafort, and Paul Fleming

National Renewable Energy Laboratory, National Wind Technology Center, Boulder, CO 80303 USA

Correspondence: Andrew P. J. Stanley (PJ.Stanley@nrel.gov)

Abstract. In wind plants, turbines can be yawed into the wind to steer their wakes away from downstream turbines and achieve an overall increase in plant power. Mathematical optimization is typically used to determine the best yaw angles at which to operate the turbines in a plant. In this paper, we present a new ~~method~~-heuristic to rapidly determine the yaw angles in a wind plant. In this method, we define the turbine yaw angles as Boolean—either yawed at a predefined angle or nonyawed—as opposed to the typical methods of ~~formulating~~-defining yaw angles as continuous or with fine discretizations. We then optimize which turbines should be yawed with a ~~greedy~~-an algorithm that sweeps through the turbines from the most upstream to the most downstream. We demonstrate that our new Boolean optimization method can find turbine yaw angles that perform well compared to a traditionally used gradient-based optimizer where the yaw angles are defined as continuous. There is less than 0.6% difference in the optimized power between the two optimization methods for randomly placed turbine layouts and less than a 0.6% difference in the optimal annual energy production between the two optimization methods for a real wind farm. Additionally, we show that our new method is much more computationally efficient than the traditional method. For plants with nonzero optimal yaw angles, our new method is generally able to solve for the turbine yaw angles 50–150 times faster, and in some extreme cases up to 500 times faster, than the traditional method.

1 Introduction

Wind energy capacity has grown rapidly in the United States in recent years (Administration, 2021b, a) and is projected to continue to grow as technology improves, costs decrease (Wiser et al., 2021), and public opinion and policy shift toward wind and renewable energy support (Stokes and Warshaw, 2017). One impactful improvement that has increased wind plant productivity is the use of active turbine yaw control for wake steering within a wind plant. When yawed, a pair of counter-rotating vortices is shed from a wind turbine, causing the downstream wake to deflect (Howland et al., 2016; Bastankhah and Porté-Agel, 2016). In a wind plant, where turbines are built close together to take advantage of high resources and logistical benefits, wake deflection can be actively exploited to steer wakes away from downstream turbines. Although yawed turbines experience a decrease in power production, many studies have shown that steering the wake away from other downstream turbines can result in a net gain for the power plant. This has been shown with ~~models~~-experiments and simulations (Adaramola and Krogstad, 2011; Park et al., 2013; Gebraad et al., 2016; Lin and Porté-Agel, 2020) as well as with field tests (Fleming et al., 2016a, 2017, 2019).

To gain maximum performance from a wind power plant for a given wind condition, it is necessary to optimize the yaw angle at which each wind turbine should operate. This optimization often involves nonintuitive trade-offs because individual turbine performance is sometimes sacrificed to increase performance of the wind power plant as a whole. In addition to being nonintuitive, this optimization problem involves complex interactions because slightly adjusting the yaw angle of a single turbine can have effects that propagate to the rest of the wind turbines in the plant—both in their power production and in the wakes that they produce. To solve this optimization problem, the yaw angles of each wind turbine are either ~~formulated~~ defined as continuous between the upper and lower bounds (Gebraad et al., 2014; Fleming et al., 2016b; Gebraad et al., 2017) or with finely discretized yaw angle selections (Dar et al., 2016; Dou et al., 2020). The problem is then solved with a gradient-based (Fleming et al., 2016b; Gebraad et al., 2017) or gradient-free (Gebraad et al., 2014; Dar et al., 2016; Dou et al., 2020) optimization algorithm that determines the best combination of yaw angles in the wind power plant. While effective and relatively efficient for a one-off wind power plant analysis, there are some shortcomings to this ~~problem-formulation~~ approach.

First, these ~~formulations~~ approaches implicitly assume that real wind turbines are able to precisely achieve any yaw angle desired by the wind plant operator with respect to certain wind resources. In reality, there are significant uncertainties involved with wind measurements and estimations as well as with wind turbine yaw angle estimation (Quick et al., 2020). Thus, ~~formulating-solving~~ the wind plant yaw control optimization problem with continuous or finely discretized yaw angles is unrealistic because real wind turbine uncertainties do not allow such precision. This reality partially motivates using coarse discrete yaw angle possibilities in wind plant yaw optimization.

~~Second, although the problem formulation and optimization methods currently present in the literature are effective and sufficiently efficient for the problems to which they have been applied, significant improvements in computational efficiency of performing the wind plant yaw angle optimization would enable further advancements in wind~~

Second, the current approaches to turbine yaw optimization are much too computationally expensive for many applications. One application for computationally efficient yaw optimization is in performing control co-design of a wind power plant. The rapid optimization of yaw angles in a wind plant facilitates coupled wind turbine design, plant performance. Computationally efficient yaw optimizations facilitate the optimization of wind plant design, layout, and controls (Fleming et al., 2016b; Gebraad et al., 2017

~~These fast yaw optimizations enable wind power plant design and layout optimization to control optimization. The computational expense required to solve optimization problems scales poorly with increasing numbers of design variables without special treatment (Zingg et al., 2008; Rios and Sahinidis, 2013; Lyu et al., 2014; Ning and Petch, 2016; Thomas and Ning, 2018). When performing control co-design of wind plants, all of the design variables are coupled, resulting in huge numbers of design variables that can easily range up to tens of thousands or more for large wind plants. Problems of this size are infeasible to solve with most current optimization techniques. However, with a fast yaw optimization process, the turbine design and plant layout variables can be decoupled from the yaw optimization, which angle optimization. If it is fast enough, the yaw optimization can be performed inside the plant evaluation. Because the within the plant analysis step, dramatically reducing the number of design variables from tens or hundreds of thousands to fewer than 100.~~

60 ~~Another application in which fast yaw optimization is extremely fast, it could be performed within the optimization of the other design variables in a two-step process as part of the function evaluations. This would allow for additional gains over performing the control optimization after the turbine design and layout are fixed. crucial is to perform real time optimization of yaw angles for turbines in a wind plant. Currently, it is typical to precompute a large amount of optimal turbine yaw angles for a variety of different inflow conditions and use a look-up table to determine the optimal yaw angles for a given inflow. However,~~
65 ~~it is difficult to have optimal yaw angles for all of the possible combinations of wind direction, wind speed, turbulence, and other atmospheric conditions. On top of all the inflow possibilities, it is also common in wind plants for one or several turbines to be down at any given time. This completely alters the flow field and dramatically increases the number of optimal yaw angles that must be precomputed. Just looking at the different combinations of wind turbines that could be operational at a given moment, a wind farm with 50 turbines would require $1.12e15$ —over a quadrillion—different possible optimal turbine~~
70 ~~yaw angles to be precomputed. To put that in perspective, one quadrillion seconds is over 31 million years. Thus, to perform wake steering in an operational plant and consider all possible scenarios of operation, it is necessary to perform real-time yaw optimization. This is impactful because it can reduce the number of design variables in the problem by an order of magnitude or more. Computational expense of optimization problems generally scales unfavorably with the number of design variables, meaning wind plant design, layout, and control codesign can quickly become infeasible, especially for large plants~~
75 ~~(Zingg et al., 2008; Rios and Sahinidis, 2013; Lyu et al., 2014; Ning and Petch, 2016; Thomas and Ning, 2018).~~

In this paper, we present a discrete, Boolean wind power plant yaw optimization ~~formulation which, to this author's knowledge,~~ approach. Boolean approaches have been used in wind plant layout optimization, in which several potential turbine locations are defined (usually in a grid), and an optimizer is used to determine at which of these locations a turbine should be placed (Mosetti et al., 1994; Grady et al., 2005; Marmidis et al., 2008). Although it has been applied to wind plant layout
80 ~~optimization, to our knowledge, a Boolean approach has never been considered before. Each to optimize wind turbine yaw angles. In our new approach, each~~ turbine is defined as either yawed or not yawed. This new ~~method heuristic~~ can quickly solve for the yaw angles of wind turbines in a power plant, which could enable the yaw angles and the rest of the design variables to be decoupled during optimization ~~Our new problem formulation and optimization are~~ and could enable real time
85 ~~optimization during operational plant yaw control. Studies have shown that in real-time yaw control in a plant, the desired yaw angles can be updated every 20 seconds and even as infrequently as every 2 minutes, and still achieve good performance benefits from wake steering (Kanev, 2020; Doekemeijer et al., 2020). Even without dramatically speeding up function calls and parallelization, our new Boolean yaw optimization method could perform real-time yaw control optimization for operational wind plants. Our new approach is presented and discussed in comparison to a typical continuous yaw formulation optimized optimization solved~~ with a gradient-based optimizer.

90 ~~We In the following sections, we present the models we used in the paper as well as the optimization formulations. For single wind conditions, we approaches. We demonstrate the performance of the Boolean problem formulation approach compared to a typical continuous, gradient-based yaw optimization, and show that there is not a significant sacrifice in performance associated with using the Boolean problem formulation and optimization. We also demonstrate an approximate savings of 50–150 times our new Boolean method. We demonstrate significant savings in computational expense when using our new method. Our~~

95 [Boolean method is around 50–150 times faster than the continuous optimization](#), with optimized power production for a random layout within 0.6% of the power from a traditionally used optimization method [and an optimized annual energy production within 0.6% of a traditional optimization method for a real wind farm layout and wind resource](#).

2 Modeling

In this section, we provide a brief overview of the models we used to evaluate wind power plant performance as well as the important wind turbine parameters.

We evaluated the wind plant performance using the open-source software FLOW Redirection and Induction in Steady State (FLORIS) (NREL, 2021). FLORIS is a wind power plant modeling software developed to be computationally inexpensive with optimization in mind. FLORIS is a steady-state, controls-oriented modeling tool that is commonly used in wind power plant control studies and wind plant layout optimization research ([Gebraad et al., 2017](#); [Thomas et al., 2017](#); [Stanley and Ning, 2019](#)). There are several modeling options available within the FLORIS framework. For this paper, we used the Gauss-Curl-Hybrid, or GCH, model (King et al., 2021). This is a Gaussian, controls-oriented wake model that captures some of the secondary effects of wake steering that are not captured by other wake models. In addition to the wake deficit and wake deflection captured in with the GCH model, we used the Crespo-Hernandez model to calculate the wake-added turbulence (Crespo et al., 1996) and the square root of the sum-of-squares method for multiple-wake combinations ([Katic et al., 1986](#)).

110 In making the important farm level calculations, FLORIS requires several wind turbine parameters. [In this paper, Unless otherwise stated, in this paper](#) we used wind turbine parameters for a 240-m-rotor-diameter, 15-MW turbine. Figure 1 shows the wind turbine dimensions that we used, along with the power and thrust coefficient curves. For the full set of input parameters and model settings used in this study, please refer to the model code input file that can be found within the code repository provided at the end of this paper. [Also, unless explicitly stated differently, the freestream wind speed was set as a uniform](#)

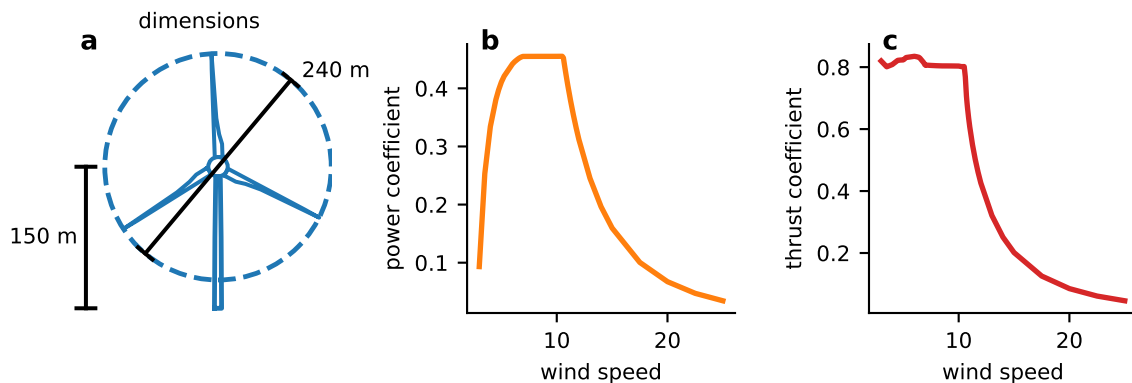


Figure 1. Parameters of the 15-MW wind turbine used in this study. From left to right, this figure provides the important wind turbine dimensions, the power coefficient curve, and the thrust coefficient curve.

115 inflow of 10 m/s, which is below the rated wind speed of the wind turbine we used. Past research have shown wake steering to be most effective for lower wind speeds (Simley et al., 2021).

3 Optimization Methods

In this section, we present the two optimization methods that we compare in this paper. We call these methods “continuous,” for the method that is typically used currently in wind plant yaw optimization, and “Boolean,” for our new method. For each, we were only interested in testing our simplified yaw control optimization. The wind turbine locations and design were fixed. We used only positive yaw angles and present results for scenarios in which we are interested in just one wind direction at a time, and for the entire wind rose. The objective of each optimization was to maximize the wind plant power production for the given wind condition or the annual energy production for the year. The design variables were the yaw angle of each wind turbine in the power plant for each wind condition being explored; these were bounded between 0 and 30 degrees. ~~There~~ In this paper we have decided to only consider positive yaw to avoid the potential of negative yaw angles being worse from a loads perspective (Kragh and Hansen, 2014; Damiani et al., 2018; Fleming et al., 2015). High fidelity simulations have shown that negative yaw angles with directly aligned turbines often don’t result in an overall power gain (Fleming et al., 2015). Additionally, we have only included positive yaw angles to reduce the amount of possible extreme yaw adjustments that turbines may need to make during operation (0–30 degrees as opposed to -30–30 degrees). There are plenty good reasons and opportunities to explore negative yaw angles in wake steering, however in this paper we have only considered positive yaw. There were no additional constraints beyond those bounding the design variables. The problem can simply be expressed as:

maximize plant power or AEP

$$\begin{aligned} \text{w.r.t.} \quad & \gamma_{n,d} & n = 1 \dots n_{\text{turbs}} \\ & & d = 1 \dots n_{\text{dirs}} \end{aligned}$$

subject to $0 \leq \gamma \leq 30^\circ$

where $\gamma_{n,d}$ is the yaw angle of wind turbine n for wind resource d , n_{turbs} is the number of wind turbines in the plant, and n_{dirs} is the number of wind speed and wind direction combinations being considered in the optimization.

135 3.1 Continuous

For the continuous optimization method, we ~~formulated~~ defined the yaw angles as continuous variables, which represents a typical method to optimize yaw angles in a wind plant. The yaw angle of each wind turbine in the plant was optimized simultaneously with the commercial gradient-based optimizer SNOPT (Gill et al., 2005) within the pyOptSparse framework in Python (Wu et al., 2020). In this ~~formulation~~ approach, we normalized the objective function by the initial plant power with zero wind turbine yaw. We also scaled the turbine yaw angles by 0.1, meaning the turbine optimizer saw the design variables with bounds between 0 and 300. These design variables were multiplied by 0.1 within the objective function. We also used finite-difference gradients and started the optimization with each wind turbine at zero yaw. Each other setting was used as

default. Refer to the optimization run scripts, found in the code repository linked at the end of this paper, to see details of this gradient-based optimization [formulation](#) [approach](#).

145 [It is important to note that for all of the results in this paper, we have only used the continuous problem scaling, bounds, and finite difference gradients that we have described. We have not explored the sensitivity of the results to different implementations of the continuous optimization. It is possible that the differences in computational time are partially attributed to the parameters we have used while setting up the optimization, and not exclusively on the differences between the Boolean and continuous approaches.](#)

150 **3.2 Boolean**

For the Boolean [formulation](#) [method](#), which is new to this paper, we assumed that each wind turbine could only be in one of two different states—yawed or nonyawed. The angle that should be used for the yawed wind turbines is explored in the following section, with the only requirement being that it must be between the upper and lower bounds of 30 and 0 degrees. To optimize the yaw angles [in this formulation](#) [with this method](#), we used the following [greedy](#) approach:

- 155 1. Sort the wind turbines from most upstream to most downstream.
2. Determine which turbines have downstream wind turbines in their wake.
3. From upstream to downstream, check one-by-one if yawing a wind turbine results in an increase in plant power. Fix wind turbine yaws that result in a power increase. Any wind turbines from Step 2 that do not have wind turbines in their wake are skipped and remain unyawed.

160 This [greedy](#) method is very computationally efficient, requiring at most one function call per wind turbine in the plant. Step 2 of the [greedy](#) optimization method requires checking to determine whether wind turbines have other downstream turbines in their wakes. To do this, we assumed the wake spread linearly behind each wind turbine using the equation of the Jensen wake model (Jensen, 1983) shown in Eq. 1.

$$r = \alpha x + r_0 \tag{1}$$

165 In this equation, r is the radius of the wake, α is the wake spread coefficient, x is the distance downstream of the waking wind turbine, and r_0 is the rotor radius of the waking wind turbine. For this paper, we used a large wake spread coefficient of 0.2. If any part of any downstream wind turbine was within this cone behind a wind turbine, the upstream turbine was designated as “waking” and the optimization algorithm above was checked to determine if this waking wind turbine should be yawed. If a wind turbine had no downstream turbines in its wake, the yaw angle was automatically assumed to be 0, and the algorithm did
170 not check to determine if that wind turbine should be yawed.

4 Comparison of Boolean and Continuous Optimization Methods

In this section, we present and discuss the optimization results of our Boolean optimization method compared with the traditional continuous optimization. We compare the performance of each optimized wind power plant as well as the computational expense required for the optimization. We present ~~three~~ four different scenarios: (1) wind turbines in a single row in-line with the incoming wind, (2) a regular grid of wind turbines with wind coming from several different directions, ~~and~~ (3) averaged results for wind turbines arranged randomly. ~~For all of the results in this section, the freestream wind speed was set at 10 m/s, which is below the rated wind speed of the wind turbine we used. Past studies have shown wake steering to be most effective below the rated wind speed.~~, and (4) results for a real wind farm with the associated wind resource.

4.1 Turbines In-Line with Wind: Power Maximization

180 In this section, we present the results for wind plant optimizations for a plant with wind turbines that are in-line with the oncoming wind. Before comparing the performance of the different optimization problems, it was necessary to determine the Boolean yaw angle at which the wind turbines should be set. To determine this, we optimized ~~turbine rows with 10–50 wind turbines and~~ an individual row of turbines using the Boolean optimization method with several different setups. We varied the number of turbines between 10 and 50, with spacings of 3, 5, and 8 rotor diameters between ~~wind turbines using the Boolean~~ optimization method turbines. We repeated each Boolean optimization with different Boolean yaw angles from 5–30 degrees at 5-degree increments. Figure 2 shows the optimized percent improvement over the nonyawed baseline case for these different Boolean yaw angles. ~~From left to right, each~~ Each subfigure shows results for the different wind turbine spacings; within each subfigure, the different lines represent the percent gain for different numbers of turbines. Notice the different y axes for each of the subfigures.

190 In Fig. 2, we see relatively poor performance at small Boolean yaw angles. The performance gains from wake steering increase with increasing yaw angle, reach a maximum, then begin to decrease again. For Boolean angles that are too small, the power of the yawed turbine does not decrease very much, but the wake does not deflect very much. At the other extreme, for the larger Boolean yaw angles can achieve a large wake deflection which minimizes wake interactions, but which comes at the cost of greatly decreasing the power production of the yawed turbine. The crossover point at which a higher Boolean yaw
195 angle actually starts to be detrimental in performance depends on the number and spacing of the turbines. Compared to the larger wind turbine spacings, the smaller wind turbine spacings benefit from larger yaw angles and also achieve a much higher percent improvement over the baseline power when using wake steering. For the power plant with 3 rotor diameter spacing between wind turbines, the optimal performance is almost identical for the yaw angles of 20 and 25 degrees, with a slight edge going to the 25-degree angle. At the 5 rotor diameter spacing, 20 degrees is clearly the best Boolean yaw angle. For the 8 rotor
200 diameter spacing, the best performance is similar—between 15 and 20 degrees—with a small edge to 15 degrees. In each case, a 20-degree Boolean yaw angle is either the best or very close to the best, which led us to select 20 degrees for the remainder of the results in this section.

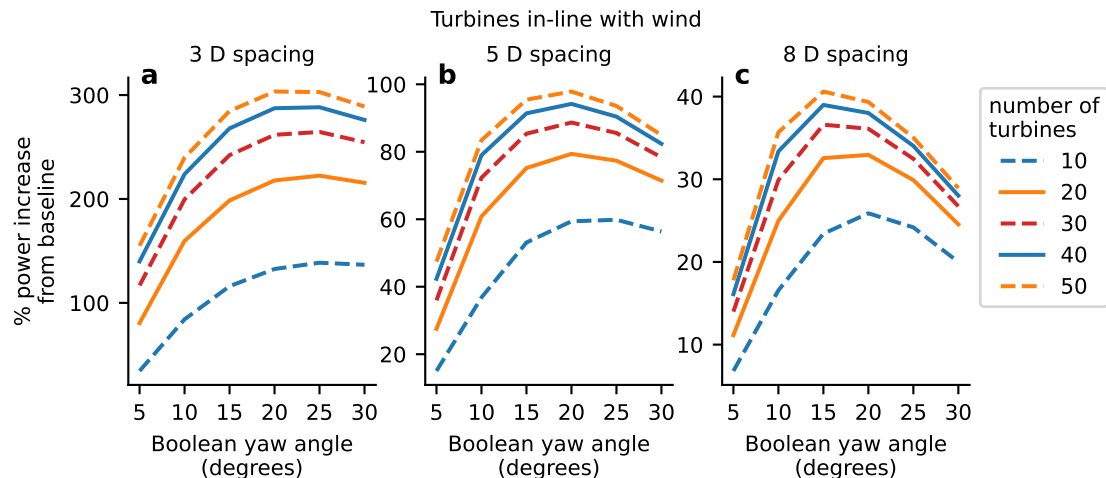


Figure 2. The absolute percent improvement over the nonyawed baseline for the Boolean problem [formulation-approach](#) and optimization methods as a function of the Boolean yaw angle. Each subfigure shows the percent improvement as a function of the number of wind turbines in the power plant for Boolean yaw angles between 5 and 30 degrees. [From left to right Subfigures 2a, the different subfigures-2b, and 2c](#) present power plants with different turbine spacings of 3, 5, and 8 rotor diameters, [respectively](#).

With 20 degrees determined as the Boolean yaw angle, we now compare the performance of the traditional, continuous [formulation-optimization](#) to our presented Boolean [formulationoptimization](#). Figure 3 shows the performance of each optimization method as a function of the number of wind turbines in the plant. For this figure, the turbine spacings were held constant at 5 rotor diameters. [The top two subfigures Figures 3a 3b and](#) show the performance of each optimized plant. [The top left subfigure Figure 3a](#) shows the absolute percent improvement of each optimization method over the nonyawed baseline. The general trend and actual values for both the continuous and Boolean optimizations are very similar in this subfigure. The percent improvement for using yaw-controlled wake steering increases with more wind turbines but begins to level out as a larger portion of the power plant operates under deep-array steady-state conditions. Although the trends are the same among each optimization method, the continuous [formulation-optimization](#) performs slightly better. [The top right subfigure Figure 3b](#) helps us see how much better the continuous [formulation-optimization](#) performs compared with the Boolean optimization. With 10 wind turbines, the power production from the continuous optimization is about 3.5% higher than the Boolean optimization. This difference then decreases to less than 1.5% with 50 wind turbines. While 1.5%–3.5% is certainly a non-negligible improvement in the wind plant power production, the similarity in power production obtained using the continuous and Boolean [formulation optimizations](#) is sufficiently close for the purpose of control co-design. For actual operation, the continuous optimization can be used to determine the yaw angles for each turbine to capture the additional percentage points of improvement.

[The bottom two subfigures of Fig. 3 Figures 3c and 3d](#) show the difference in computational expense between the continuous and Boolean [formulations](#). [The bottom left subfigure optimizations. Figure 3c](#) shows the absolute time required to run each optimization. For the continuous [formulationoptimization](#), the computation time is seen to increase [exponentially-dramatically](#)

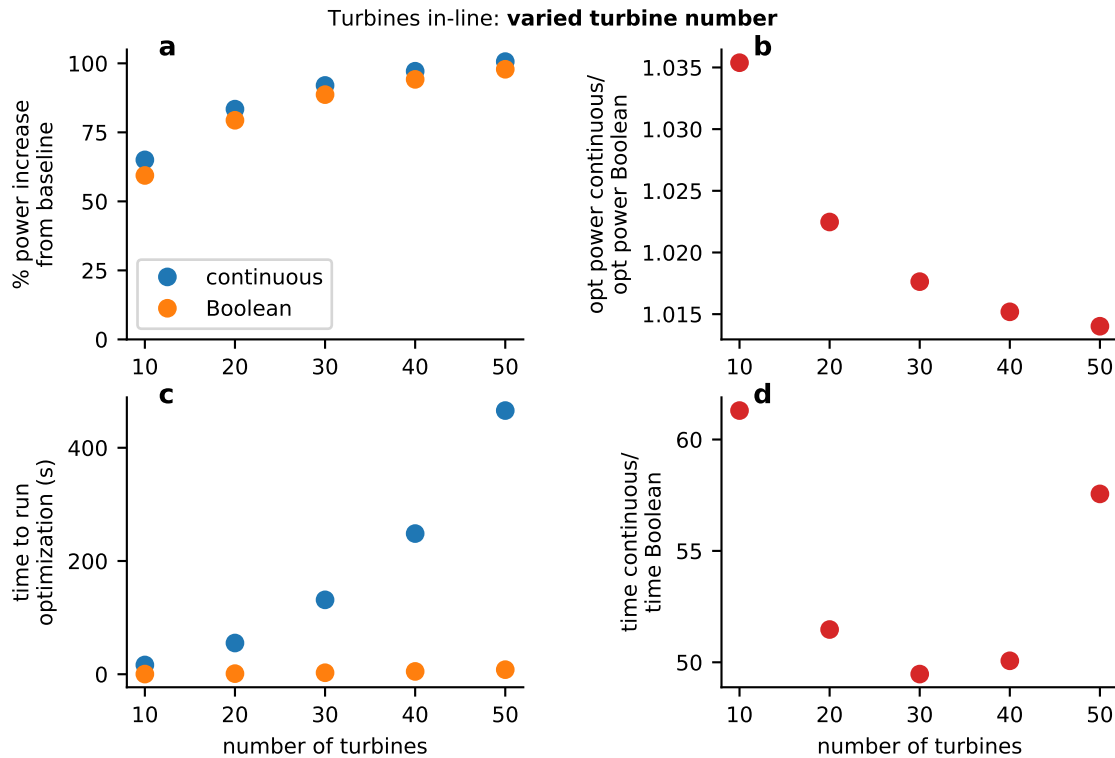


Figure 3. Comparison of a wind plant optimized with a traditional continuous ~~formulation-optimization~~ compared to our novel Boolean optimization. The results in this figure are for a single row of turbines in-line with the incoming wind. For the purposes of this figure, the spacing between wind turbines was constant at 5 rotor diameters, while each subfigure shows different metrics as a function of the total number of wind turbines in the plant. ~~The top-left subfigure Figure 3a shows the absolute percent increase in power over the nonyawed baseline for the continuous and Boolean formulations optimizations.~~ ~~The bottom-left subfigure Figure 3b shows the absolute time required to run each optimization, again for the continuous and Boolean formulations.~~ ~~The top-right subfigure shows the ratio of the optimized power with the continuous formulation approach to the optimized power with the Boolean formulation approach.~~ ~~The bottom-right subfigure Figure 3c shows the absolute time required to run each optimization, again for the continuous and Boolean approaches.~~ ~~Figure 3d shows the ratio of the time required to optimize for the continuous formulation optimization to the time required to optimize for the Boolean formulation optimization.~~

with increasing design variables. As the number of wind turbines increases, the total number of function calls for optimization and the time for each function call increase, leading to poor computational scaling with increasing plant size. The computational expense for the Boolean optimization ~~formulation~~ also increases with power plant size, although the scale is much smaller, such that the computation time is minuscule and flat compared to the continuous computation time. ~~The bottom-right subfigure Figure 3d shows the ratio of time required for the continuous optimization to the Boolean optimization.~~ As seen in the figure, the Boolean optimization was 50–60 times less computationally expensive than the continuous optimization.

While Fig. 3 shows the comparison of the different optimization methods as a function of the number of wind turbines, Fig. 4 shows the comparison of methods for a constant 50 wind turbines but for varied turbine spacing, from 3–8 rotor diameters. The subfigures in this figure represent the same information as that shown in Fig. 3, but for varied spacing. In **the top-left**

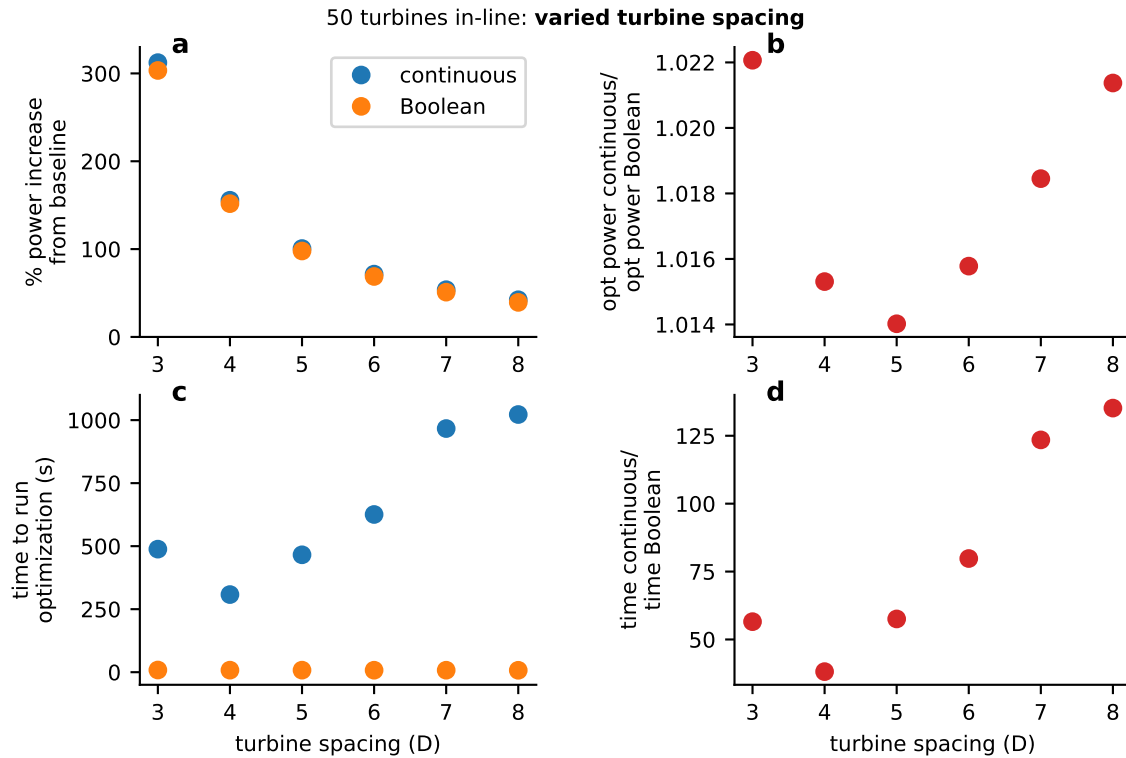


Figure 4. Comparison of a wind plant optimized with a traditional continuous [formulation-design space](#) compared to our novel Boolean optimization. The results in this figure are for a single row of turbines in-line with the incoming wind. For the purposes of this figure, the number of wind turbines was constant at 50, while each subfigure shows different metrics as a function of the spacing between wind turbines. [The top-left subfigure Figure 4a](#) shows the absolute percent increase in power over the nonyawed baseline for the continuous and Boolean [formulationsoptimizations](#). [The bottom-left subfigure Figure 4b](#) shows the [absolute time required to run each optimization, again for the continuous and Boolean formulations](#). [The top-right subfigure](#) shows the ratio of the optimized power with the continuous [formulation approach](#) to the optimized power with the Boolean [formulationapproach](#). [The bottom-right subfigure Figure 4c](#) shows the [absolute time required to run each optimization, again for the continuous and Boolean approaches](#). [Figure 4d](#) shows the ratio of the time required to optimize [with the continuous formulation approach](#) to the time required to optimize [with the Boolean formulationapproach](#).

230 [subfigure Fig. 4a](#), we see that there are decreased gains from wake steering as the spacing of wind turbines increases. This is because, as wind turbine spacing increases, the wakes have more time to recover before reaching the downstream turbines. Thus, wake avoidance through wake steering is not as beneficial because the wind speed in the wakes is closer to the freestream. In [the top-right subfigure Fig. 4b](#), we also see that the difference in the percent gain from the continuous optimization and the Boolean

235 optimization is largest for the smaller wind turbine spacings. This indicates that the continuous formulation-optimization is more beneficial in scenarios of extreme waking, where small yaw adjustments can lead to a larger increase in plant power. In the top right subfigure Fig. 4b, the results are similar to those in Fig. 3, where for 50 turbines the optimal power from the continuous optimization is between 1.4% and 2.2% greater than the Boolean power. In the bottom two subfigures Figs. 4c and 4d, we see the difference between the computational expense for the various problem formulations-approaches and see that the Boolean formulation-optimization was 40–130 times faster than the continuous formulationoptimization.

240 Figures 3 and 4 show the comparison of optimized performance and computation time for a line of wind turbines in-line in-line with the incoming wind. From the scenarios optimized, there are a few key conclusions. First, the optimal Boolean yaw angle was found to be 20 degrees, which performed the best overall for different numbers of wind turbines and turbine spacings. This Boolean yaw angle appears to be sensitive to the wind turbine spacing and is likely a function of the wind speed as well. Second, the majority of the increase in power production from wake steering can be achieved with a Boolean problem-formulationapproach. Third, the continuous problem-formulation-optimization still performs better than the Boolean formulationoptimization, between 1.5% and 3.5% better, depending on the number of turbines and the turbine spacing. Fourth, the Boolean problem-formulation-optimization is able to solve the optimization-problem much faster than the continuous formulation-between-optimization-between 40 times and 130 times faster. While the turbines in-line with the incoming wind provide a great example case, with the worst-case waking scenario, this case does not present the entire scenario. In reality, wind turbines are most often arranged in a grid or more random layout distributed over the landscape and are not usually directly in-line-in-line with the incoming wind.

4.2 Turbines Arranged in a Grid: Power Maximization

In this section, we discuss a more realistic scenario where the wind turbines are placed in a regular grid. Similar to the previous section, grids of wind turbines are simply several sets of in-line wind turbines. However, the spacing between wind turbines varies depending on the wind direction. Also, it is possible to have wake interaction between the rows of turbines depending on the wind direction. Although grid arrangements perform suboptimally compared with freely optimized layouts, grid layouts are easier to design and build, and there are often restrictions that require a grid layout. Also in this section, we compare the continuous and Boolean optimizations for different grid sizes and for different wind directions in the grid. For this section we assumed a constant grid spacing of five rotor diameters and a Boolean yaw angle of 20 degrees.

260 Figure 5 shows the wakes for a nonyawed, 5-by-5 grid wind power plant for the 6 wind directions we considered between 270 degrees (due west) and 345 degrees in 15-degree increments. As seen in this figure, some wind directions result in high wake interactions between wind turbines, such as 270 degrees and 315 degrees; while others have minimal wake interactions, such as 300 degrees and 330 degrees. One can expect high gains from wake steering for the wind directions with the most waking, although a priori it is difficult to determine how the continuous and Boolean optimizations will compare.

265 Figures 6, 7, and 8 show the results of the grid optimizations for different numbers of grid rows and for different wind directions. Figure 6 shows the percent increase in power that wake steering achieves compared to a nonyawed baseline for each of the optimization methods. Notice that for wind directions of 270 degrees and 315 degrees, the Boolean optimization

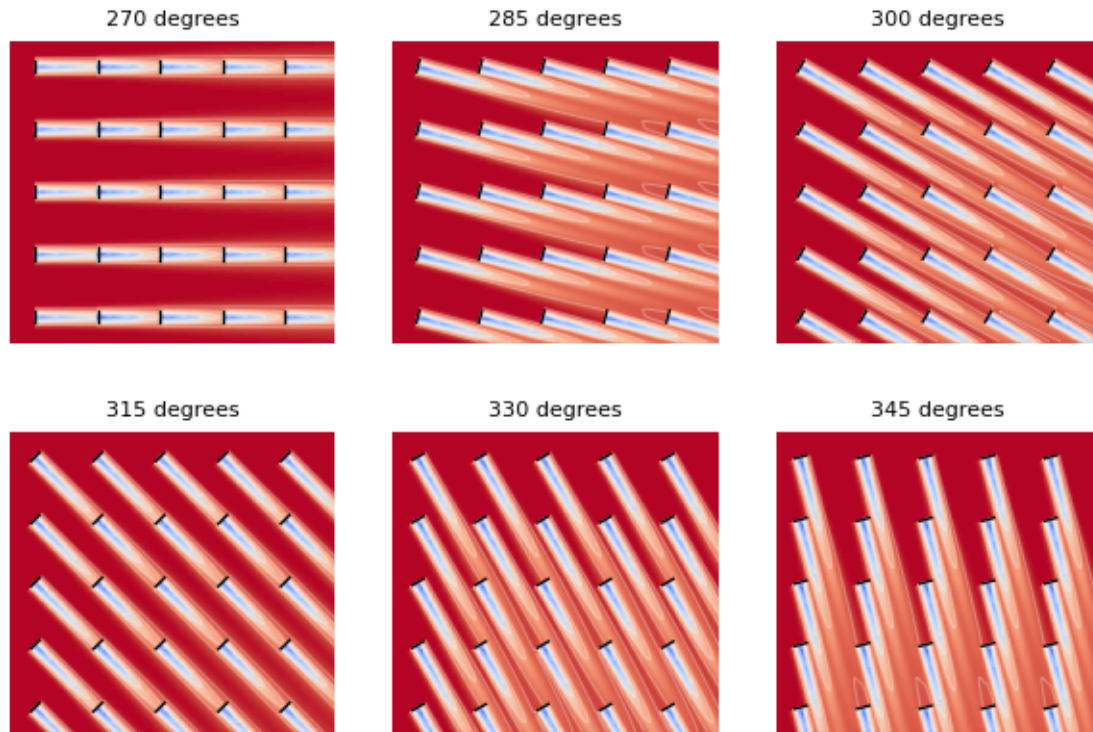


Figure 5. The flow field for a 5-by-5-square grid wind plant for different wind directions.

looks very similar to the continuous optimization—almost like the results for the wind turbines that were in-line with the wind direction. For these two wind directions, the turbines are behaving similar to the in-line wind plant. The interaction of the normal grid and the wind direction means that the power plant is just made of several rows in-line with the wind placed side by side. For the wind directions of 285 degrees and 330 degrees, there is very little or no performance improvement for either optimization method. For these wind directions, the grid is oriented such that there is very little wake interaction between wind turbines and, where there is wake interaction, it is very far downstream, such that the wake has already mostly recovered. Finally, for the wind directions of 300 degrees and 345 degrees, there is a more significant difference between the percent improvement achieved with the two different optimization methods. For these wind directions, the continuous optimization is able to realize about twice the percent improvement than the Boolean optimization, when compared to the baseline nonyawed case. Even though the percent improvement is small, this behavior is different than the other cases explored so far in which the Boolean optimization was able to provide most of the benefit that the continuous optimization provided.

Figure 7 shows the ratio of the optimal power achieved with the continuous optimization to the Boolean optimization. For the wind direction of 270 degrees, the continuous optimization provided yaw angles that performed 2%–4% better than the Boolean optimization, which is slightly higher than the percentage gain for the in-line wind turbines from the previous section. This additional benefit of the continuous optimization appears to be because there are fewer wind turbines in-line for the grid

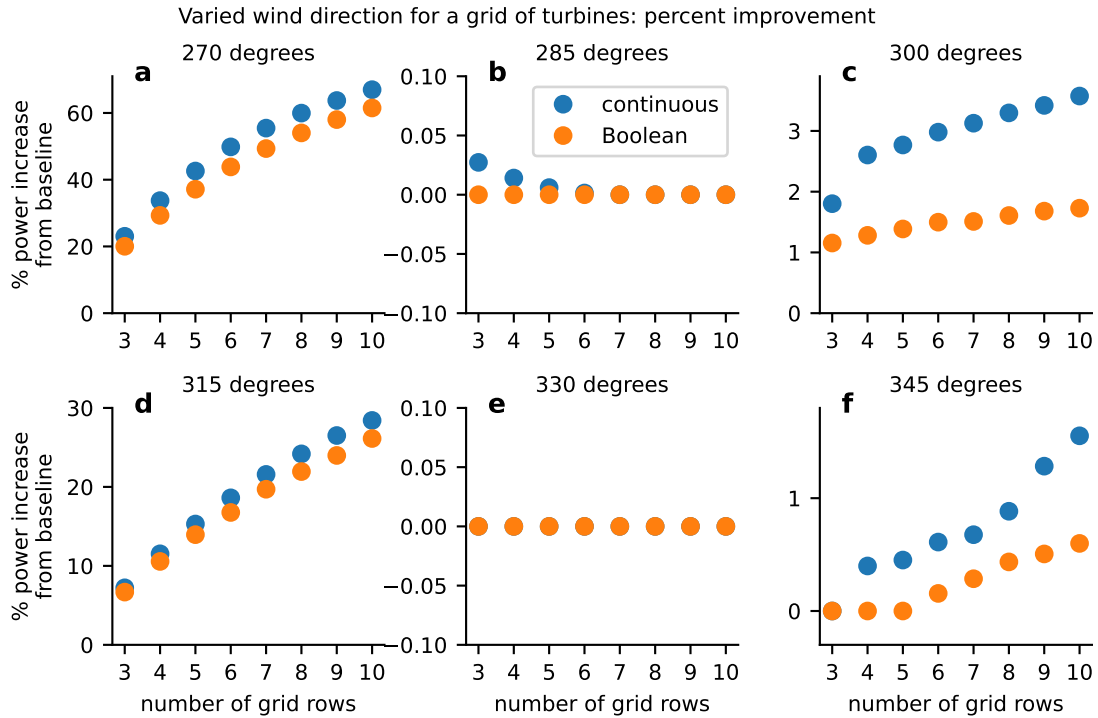


Figure 6. Comparison of the absolute percent increase in power over the nonyawed baseline wind plant optimized with a traditional continuous [formulation optimization](#) compared to our novel Boolean optimization. These results are for a grid wind power plant where, within each subfigure, the x-axis indicates different numbers of rows in the plant. Each subfigure shows results for a different wind direction.

optimization, with only 3–10 rows. For the wind direction of 315 degrees, the continuous optimization only performs up to 2% better than the Boolean optimization. This is additional evidence for what we already saw in the previous section: When wind turbines are spaced further apart, there is less of an advantage to the continuous optimization. The results for wind directions of 285 degrees and 330 degrees are trivial—there is no power gain from yaw control with either optimization method, meaning that the ratio is 1. For wind directions of 300 degrees and 345 degrees, the continuous optimization method again performs up to 2% better than the Boolean optimization. Even though the relative percent gain between optimization methods was different for these wind directions, the absolute percent gain was very small.

290 For the wind directions that we considered for the grid, notice that several of the wind directions are mirrors of each other. In Fig. 5, we see that the wind directions pairs of 285 degrees and 345 degrees, as well as 300 degrees and 330 degrees are reflections across the main diagonal. In Figs. 6 and 7, we see that even though they are mirrors of each other, these wind direction pairs do not perform the same with wake steering through yaw control. This is because the yaw angles were constrained between 0–30 degrees, causing wake deflection to only occur in one direction. With this constraint, wake steering

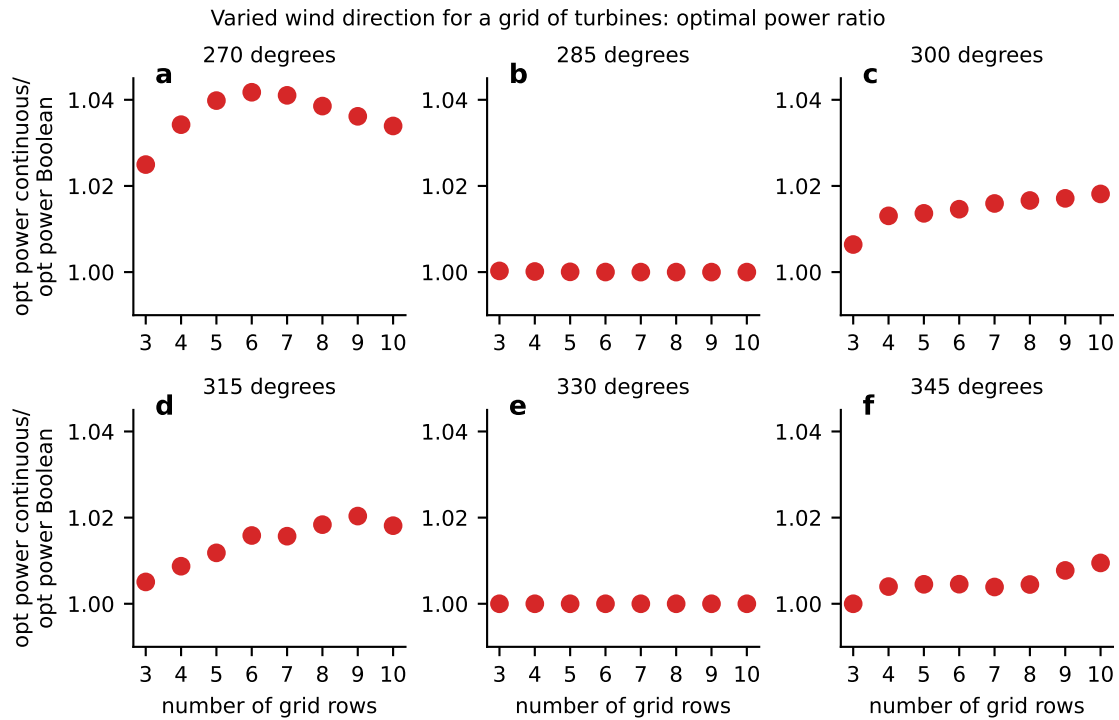


Figure 7. Comparison of the optimal power achieved with wake steering with yaw angles optimized with a traditional continuous [formulation approach](#) compared to our novel Boolean optimization. These results are for a grid wind plant where, within each subfigure, the x-axis indicates different numbers of rows in the power plant. Each subfigure shows results for a different wind direction.

295 [can be used to improve power production when turbines are partially waked on one side, but not the other. Again, this constraint was primarily included to avoid the possibility of being overly detrimental from a loads perspective.](#)

Figure 8 shows the ratio of time required to optimize each plant with the two different optimization methods. First, let's examine the two right columns in this figure. For each of these optimizations, the difference in computational expense between the continuous and the Boolean methods is small compared to the 50–100 times multiplier we saw for the in-line power plant results. If we refer back to Fig. 6, we see that the percent gain from wake steering is nonexistent or very small for these wind directions. This indicates that the optimized yaw angles were close to zero throughout the plant and there was relatively low sensitivity of plant power to the yaw angles of wind turbines in the plant. Thus, the continuous optimization converged quickly and was not notably superior to the Boolean optimization. Now, let's examine the left-hand column, which shows the results for wind directions of 270 degrees and 315 degrees. For these directions, the wind turbines in the grid are directly in-line with the incoming wind. For a wind direction of 270 degrees, the wind is in-line with the grid rows and, for 315 degrees, the wind is in-line with the grid diagonals. As we saw in previous results, when wind turbines are in-line with the incoming wind, the Boolean optimization solves much more quickly than the continuous optimization. For the grid, this affect appears

300

305

to be exaggerated because it consists of several rows of wind turbines in-line with the wind. For these two wind directions, the Boolean optimization is about 150–500 times faster than the continuous optimization.

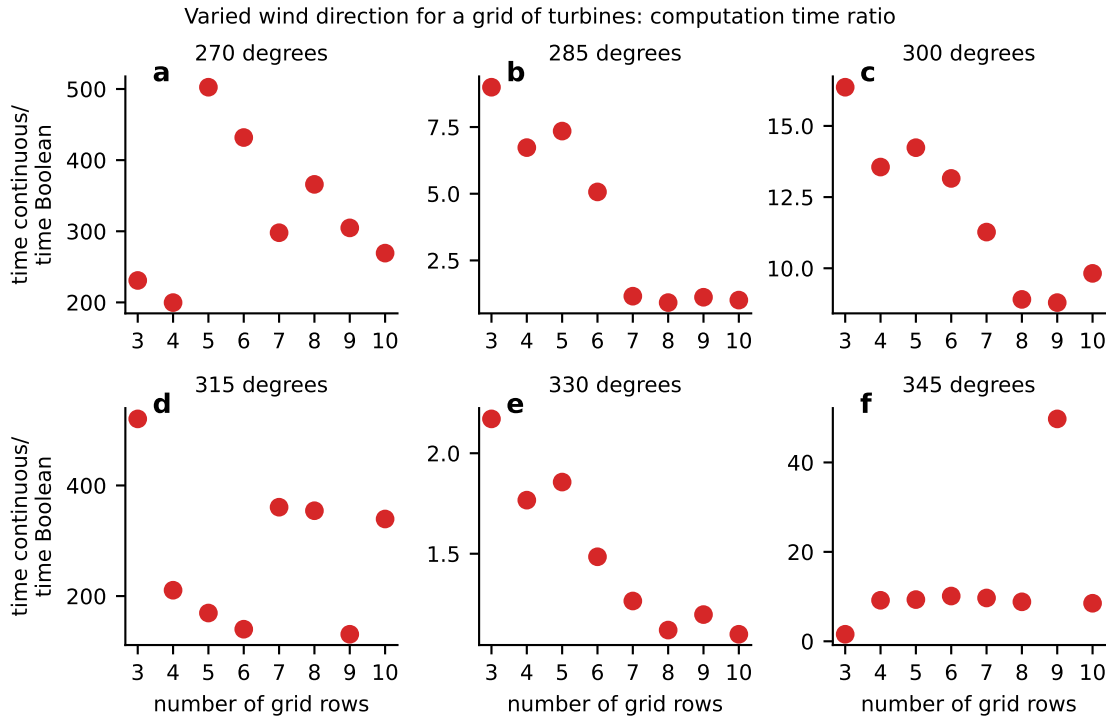


Figure 8. Comparison of the time required to solve the plant yaw angle optimization problem with yaw angles optimized with a traditional continuous [formulation approach](#) compared to our novel Boolean optimization. These results are for a grid wind power plant where, within each subfigure, the x-axis indicates different numbers of rows in the plant. Each subfigure shows results for a different wind direction.

310 4.3 Turbines Arranged Randomly

Sections 4.1 and 4.2 present and discuss the comparison of performance for each optimization method for regularly arranged wind plants, in a line and in a grid. In this section, we explore how the yaw optimization methods perform in plants with the wind turbines arranged randomly. For sections 4.1 and 4.2, we used a Boolean yaw angle of 20 degrees for all of the performance comparison optimizations. While we showed that this was appropriate for the regularly arranged wind plants, 315 it is possible that another angle is more appropriate for a random, irregular layout. Figure 9 shows the results of our test of which Boolean yaw angle is optimal. For this figure, we randomly generated seven wind plant layouts with the indicated number of wind turbines, with an average spacing of 5 rotor diameters. [Seven layouts was the number of full optimizations that completed in an arbitrary amount of time we set to run the random yaw optimizations, and was deemed sufficient to demonstrate the performance of our Boolean optimization method.](#) We assumed the wind came from due west for each of the

320 optimizations, and we optimized the yaw angles in each of the 7 layouts using the Boolean optimization method. The results in the figure show the average performance of the 7 random layouts for each of the Boolean yaw angles that we tested and for each of the numbers of wind turbines. Because the layouts for Fig. 9 were randomly generated, there is little meaning to the

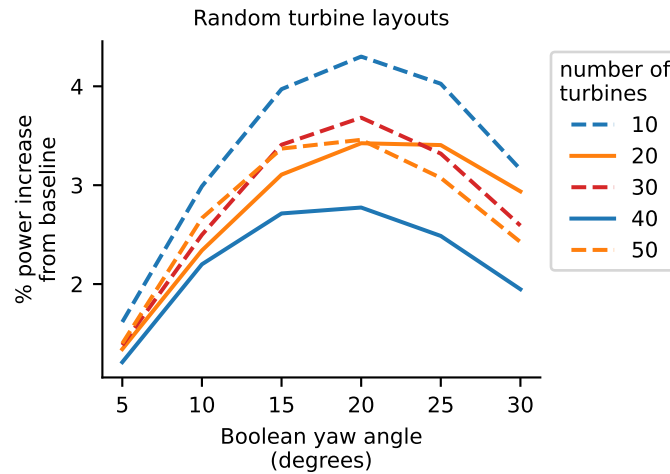


Figure 9. The absolute percent improvement over the nonyawed baseline for the Boolean ~~problem formulation and~~ optimization ~~methods~~ as a function of the Boolean yaw angle. The results shown are averaged for 7 randomly generated turbine layouts for the different numbers of turbines indicated on the x-axis. Boolean yaw angles between 5 and 30 degrees are shown.

trends of performance increase for the different numbers of wind turbines. However, in this figure we can see that 20 degrees is again the superior Boolean yaw angle, as we saw for the regular layouts.

325 Figure 10 compares the optimal performance of the continuous and Boolean optimization methods. As we did in discussing previous results, let's first examine ~~the top row of subfigures, which compares~~ Figs. 9a and 9b, which compare the performance of the wind plants optimized with the different methods. As with Fig. 9, these results are the average of 7 randomly generated layouts with an average spacing of 5 rotor diameters, with different numbers of wind turbines indicated on the x axes. As was determined from Fig. 9, the Boolean yaw angle for these optimizations was 20 degrees. ~~The top-left subfigure~~ Figure 9a
330 shows the percent improvement achieved from wake steering compared to the nonyawed baseline. Notice that for these random layouts, the Boolean optimization performs very well compared to the continuous optimization, capturing the majority of the power gain from wake steering with the more simple optimization method. ~~The top-right subfigure~~ Figure 9b shows the ratio of the optimized continuous power to the optimized Boolean power. In this figure, we see that for all numbers of wind turbines, the Boolean optimization performs within 1% and, for most of the results, within 0.5% of the continuous optimization. This is
335 much closer than the comparison of the two optimization methods for the previous regular layouts in which the difference with the optimized power was sometimes as high as 4% in some extreme cases.

The comparison for the computational expense of each optimization method is shown in ~~the bottom row of Fig. 10~~ Figs. 9c and 9d. These timing results are similar to the results from the in-line power plant results, where the Boolean optimization

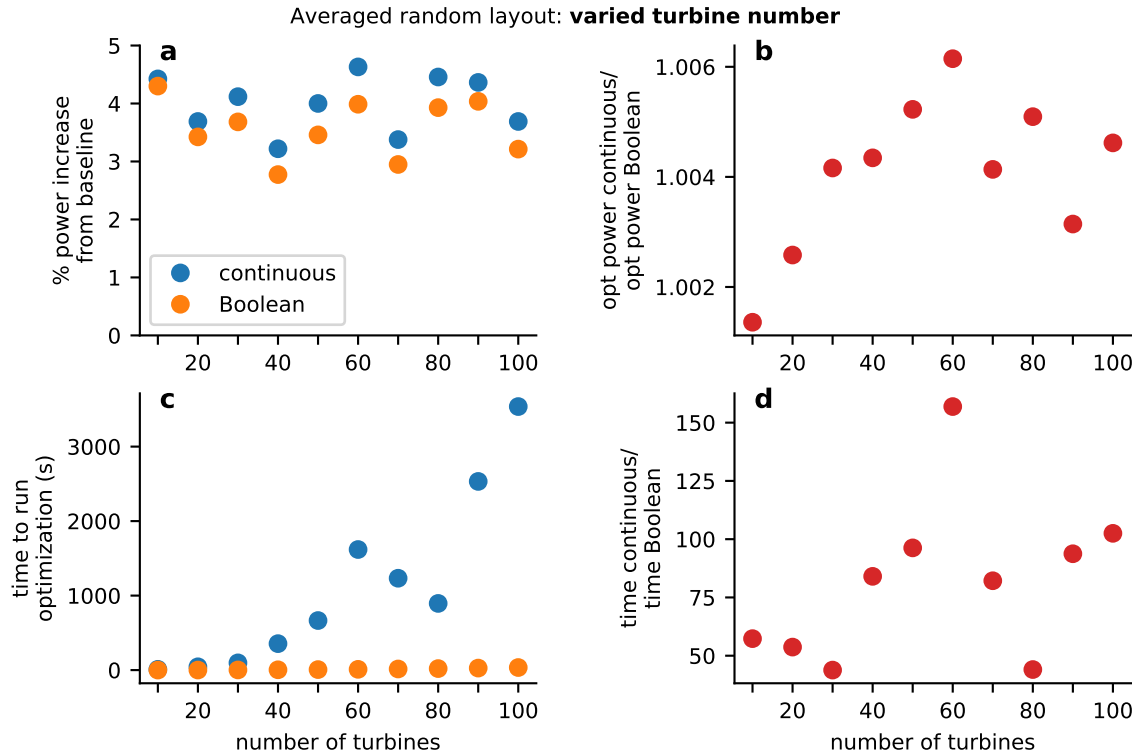


Figure 10. Comparison of a wind plant optimized with a traditional continuous [formulation approach](#) compared to our novel Boolean optimization. The results in this figure are the averaged results for 7 randomly generated wind turbine layouts for plants with different numbers of turbines. For the purposes of this figure, the average spacing was constant at 5 rotor diameters while each subfigure shows different metrics as a function of the number of wind turbines. [The top-left subfigure Figure 9a](#) shows the absolute percent increase in power over the nonyawed baseline for the continuous and Boolean [formulations optimizations](#). [The bottom-left subfigure Figure 9b](#) shows the absolute time required to run each optimization, again for the continuous and Boolean formulations. [The top-right subfigure](#) shows the ratio of the optimized power with the continuous [formulation approach](#) to the optimized power with the Boolean [formulation approach](#). [The bottom-right subfigure Figure 9c](#) shows the absolute time required to run each optimization, again for the continuous and Boolean optimizations. [Figure 9d](#) shows the ratio of the time required to optimize [with the continuous formulation approach](#) to the time required to optimize [with the Boolean formulation approach](#).

is about 50–100 times faster than the continuous optimization, with one outlier about 150 times faster. In this random yaw optimization, there are always some wind turbines that are significantly waking. Because of this, the plant power is sensitive to some nonzero wake angles, which means the continuous [formulation optimizations](#) always takes much longer than the simple Boolean [formulation optimizations](#).

4.4 [Princess Amalia Wind Farm](#)

The previous sections present and discuss the performance of our new Boolean yaw optimization method for artificial scenarios. These are good to demonstrate the performance of our method, but they give no indication of how Boolean yaw optimization would perform in a real plant. In this section, we present the results of yaw control optimization in the Princess Amalia Wind Farm, which is a real wind farm in North Sea of the coast of the Netherlands.

Figure 11 shows the layout of the Princess Amalia Wind Farm, the wind direction probabilities of the wind resource, and the average wind speed by wind direction. Notice that the turbine layout is an offset grid, optimized the result in minimal waking for the dominant wind direction from the southwest. For the purposes of this paper, we used the average wind speeds from each wind direction, shown in Fig. 11c. Unlike the rest of the optimization cases in this study, the Princess Amalia Wind Farm is composed of 2-MW turbines, which have a rotor diameter of 80 meters and a hub height of 60 meters. The wind rose was binned into 72 5-degree sections. The wind speed for each wind direction was assumed to be constant, as the average wind speed from the associated wind direction.

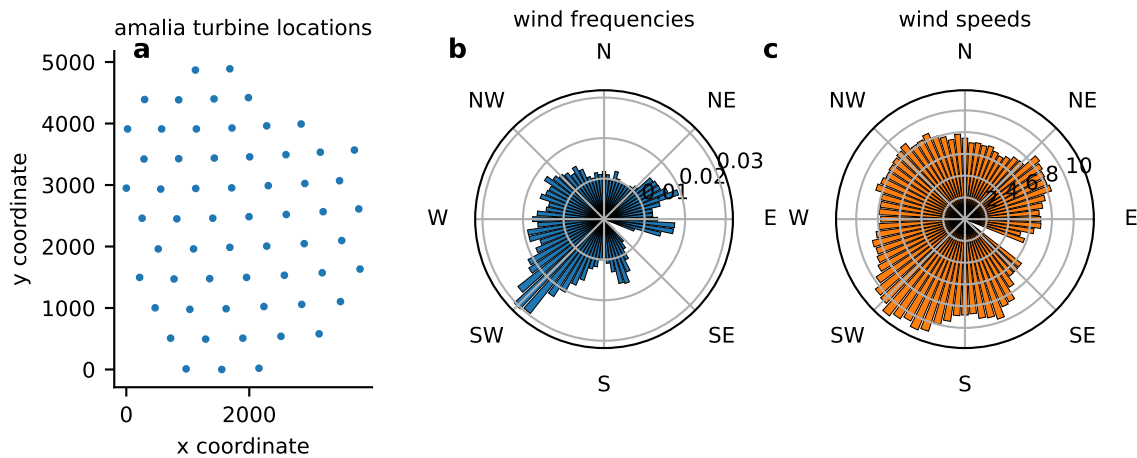


Figure 11. The Princess Amalia Wind Farm definition, shown in Figs. 11a, 11b, and 11c are the wind farm layout, the wind direction probabilities, and the directionally averaged wind speeds, respectively. The dots representing the turbine locations are to scale with the turbine rotor diameter.

Figure 12 shows the comparison of the power improvements achieved by yaw optimization for the continuous approach and our new Boolean approach. Figure 12a shows the power improvement from an unyawed baseline for each wind direction, and Fig. 12b shows this same percent power improvement multiplied by the probability of each wind direction. Notice that the continuous optimizations regularly performed slightly better than the Boolean optimizations across all wind directions.

Table 1 shows all of the results from the continuous and Boolean yaw optimizations of the Princess Amalia Wind Farm. The ratio of the optimized continuous AEP over the optimized Boolean AEP (presented as the optimized AEP ratio) is 1.0058, meaning that the continuous optimization only achieves an AEP 0.58% better than our Boolean optimization. By looking at figure 12, we can tell that the continuous optimization consistently achieves higher power than the Boolean optimization.

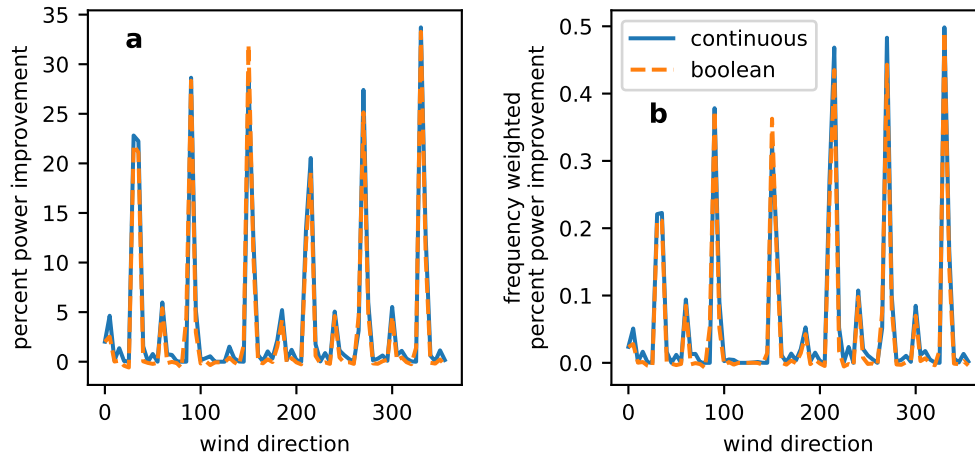


Figure 12. Power improvements achieved by yaw control in the Princess Amalia Wind Farm compared to an unyawed baseline. The different color lines represent the results from the continuous optimization and our new Boolean yaw optimization indicated by the legend. Figure 12a shows the percent power improvement for each wind direction, while Fig. 12b shows these same percent improvements multiplied by the probability of the associated wind direction.

365 However, the wind directions which achieve a high improvement with the continuous approach relative to the Boolean approach have a low absolute percent improvement. This is because the wind plant layout is already optimized taking the wind rose into account. When the wind direction probabilities are multiplied in as well, the impact of the wind directions where the continuous optimization significantly outperforms the Boolean optimization are further reduced. Thus, for the overall AEP, the Boolean optimization is able to perform almost as well as the continuous optimization, even in this gridded layout.

370 In Table 11 we also see the comparison between the computation time required for the continuous and Boolean optimizations. The continuous optimization required almost 19 hours, while the Boolean optimization was complete in about 13 minutes, almost 87 times faster than the continuous optimization. The ratio of the required computation scale is important at any scale, but becomes more impactful for larger optimization problems. If we were to scale up the problem further, such that the Boolean optimization were to take about a day to complete, that would mean the continuous optimization would take approximately 3 months if the same computational scaling applied.

5 General Discussion

375 In this section, we discuss the overarching performance of our new Boolean optimization method compared to the traditional continuous optimization method. We will discuss the optimal Boolean yaw angles that should be used, the performance of the optimized wind power plants with each method, the differences in computation time, and the potential applications of our Boolean method.

Table 1. The results comparing the yaw optimization with the continuous approach to our Boolean approach. The last two lines show the optimized AEP ratio and the time ratio, which is the continuous approach result divided by the Boolean approach result.

<u>baseline AEP</u>	<u>325.5 GWh</u>
<u>continuous AEP</u>	<u>336.2 GWh</u>
<u>continuous improvement</u>	<u>3.27 %</u>
<u>continuous time</u>	<u>67,599 s (18.8 hr)</u>
<u>Boolean AEP</u>	<u>334.2 GWh</u>
<u>Boolean improvement</u>	<u>2.68 %</u>
<u>Boolean time</u>	<u>778 s (13 min)</u>
<u>optimized AEP ratio</u>	<u>1.0058</u>
<u>time ratio</u>	<u>86.9</u>

5.1 Optimal Boolean Yaw Angle

380 In Section 4, we determined that when using our new Boolean optimization method the best plant performance occurred with
a Boolean yaw angle of 20 degrees. This was determined by comparing wind power plants that were optimized with different
wind turbine spacings and numbers of wind turbines. For the cases that we compared, the yaw angle of 20 degrees provided
either the best or close to the best plant performance for both the regular line and grid turbine layouts, as well as the irregular
random turbine layouts. While it is clear from Fig. 2 that the optimal Boolean yaw angle has some sensitivity to the turbine
385 spacing in the wind plant, we also expect that it is sensitive to the wind speed, which we did not test in this paper. It may be
important to tune the Boolean yaw angle to the exact scenario at which the wind plant will operated, or even more finely adjust
the Boolean yaw angle for additional gains when operating in the scenarios demonstrated in this paper. Because of the minimal
computational expense required to run the Boolean optimization, this tuning of the yaw angle can be quickly achieved with
very little effort.

390 5.2 Performance of Optimized Plants

In general, we see from Section 4 that the Boolean optimization method is able to achieve most of the gains from wake
steering that the continuous optimization method can achieve. Additionally, in general, the optimized power from the Boolean
optimization is very close to that of the continuous optimization. The Boolean optimized plants had the best comparison to
the continuous optimized plants for the random turbine layouts. This indicates that the Boolean optimization method would
395 perform particularly well for land-based wind power plants where the layout is not constrained to a regular grid. For land-based
plants, wind turbine placement is often determined to a large extent by terrain features, land availability, and spatial constraints
from local regulations, resulting in a more irregular layout where the Boolean method could perform well.

However, the Boolean optimized plants performed the worst compared to the continuously optimized plants for the regular
turbine layouts with wind turbines that were directly in-line with the incoming wind. In these cases, the Boolean plants were

400 between 1.5% and 4% worse than the continuous optimization plants. For the regular grid layouts where the wind direction
resulted in turbines that were slightly offline with the wind direction, the Boolean method resulted in plants that performed
about 0.5%–2% worse than the continuous method. At first glance, this seems to indicate that the Boolean optimization method
may not be appropriate for wind power plants with a regular wind turbine layout, such as offshore wind plants in the United
States where layouts are restricted to grids. However, even with these results, we expect the Boolean optimization method to
405 be appropriate.

For the results shown in this paper, we only considered the power production comparison between the Boolean and the
continuous optimization methods. In reality, we care about the overall energy production of the wind plant, not the instan-
taneous power production. The overall energy production takes into account all of the directions of incoming wind, as well
as a distribution of wind speeds. Although for some orientations, the Boolean optimization performed relatively poorly, for
410 most it compares very well to the more computationally expensive yaw optimization. Overall, we expect that the cases of poor
comparison will be balanced out by the other wind conditions, and overall the Boolean yaw optimization will capture most of
the gains that are possible from wake steering.

5.3 Computation Time

Except for the cases where the optimal yaw angle of all the turbines in the plant were zero or close to zero, the Boolean
415 optimization was much more computationally efficient than the classic continuous optimization. In general, the Boolean op-
timization was more than 50 times faster than the continuous optimization and, in some cases, up to 500 times faster. As we
mentioned in Section 3, we used the same scaling and convergence criteria for all of the continuous optimization runs. The
computation time for any optimization problem is sensitive to these parameters. It is not only possible, but almost guaranteed,
that there is some set of scaling and convergence criteria that would allow a specific optimization to find a similar solution
420 faster than we achieved with our scaling. However, finding the best optimizer parameters for a specific optimization problem
is often viewed as more of an art than a hard science. There are some general rules that provide an approximation of the ap-
propriate values, but these almost always require several iterations to find a parameter set that works well. Accounting for the
possible over-prediction of the Boolean method’s computational advantage, it still vastly outperforms the continuous method.
Even with the best scaling, we expect the Boolean method to be more than an order of magnitude faster than the continuous
425 optimization. In addition, the Boolean method completely removes the time and experience required to find the appropriate
gradient-based optimizer settings.

5.4 Application of Boolean Optimization

Figure 13 shows results for all of the optimizations run for this paper. The y-axis shows the AEP ratio, which is the optimal
AEP from the continuous yaw optimization divided by the optimal AEP from our Boolean optimization. The x-axis shows
430 the time ratio, which is the time to run the continuous optimization divided by the time to run our Boolean optimization. The
different colors represent the different scenarios that we considered in the previous sections. Note that the the in-line, grid, and

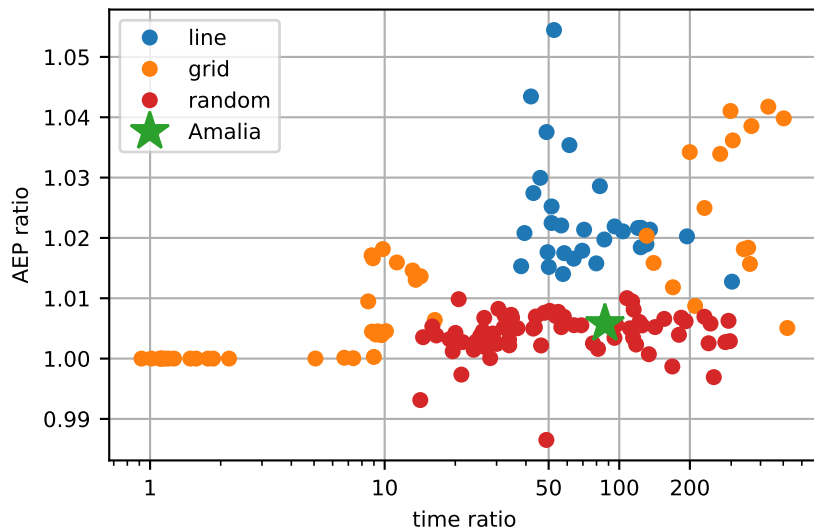


Figure 13. The aggregate results of optimizations run in this paper. The y-axis shows the AEP ratio, which is the optimal AEP from the continuous yaw optimization divided by the optimal AEP from our Boolean optimization. The x-axis shows the time ratio, which is the time to run the continuous optimization divided by the time to run our Boolean optimization. Each color represents optimizations run for the different scenarios, indicated by the legend.

random results shown in this figure compare single wind directions, while the Amalia optimization shows an AEP optimization with a full wind rose where each wind direction is associated with a different probability and wind speed.

As discussed previously, in this figure we see that compared to the continuous yaw optimization, the Boolean optimization performed very well for the random wind turbine layouts, and for the Amalia optimization which had an grid layout that was optimized for the associated wind rose. With the exception of maybe two cases, the Boolean optimization performed within 1% of the continuous optimization, and was able to do so with a 1–2 order of magnitude reduction in the computational expense. The Boolean optimization did not achieve as good of a solution for the in-line and grid layouts, but these scenarios with poor performance would be mostly avoided through layout optimization, and would actually have only a small impact on the final AEP.

There currently is, and always will be, a need to improve the computational efficiency of analysis and optimization studies. For this specific process of quickly optimizing the yaw angles of wind turbines in a power plant for wake steering, we have identified the following reasons to improve computational efficiency as some of the most important:

First is the control optimization of very large wind plants. The computational expense of optimization problems scales poorly with increasing numbers of design variables. Very large wind power plants, or separate wind plants that are close together and have significant wake interaction, should benefit heavily from wake steering through yaw control. However, plants with hundreds or thousands of wind turbines may be limited by the poor scaling of the optimization problem.

Second is the rapid exploration of wind technology potential accounting for wake steering innovations. To determine suitable sites for wind development and help determine how public and private funds should be invested, it is necessary to project how wind energy will be deployed in coming years. Part of this requires understanding how wind energy will be improved through wake steering in existing plants and in plants that will be built while accounting for wake steering. With current computational capabilities, researchers cannot simulate all of the scenarios that are possible and also take into account wake steering. The rapid Boolean optimization process is one step that enables further understanding.

Third is to perform control co-design of a wind power plant. The rapid optimization of yaw angles in a wind plant facilitates coupled wind turbine design, plant layout, and control optimization. As previously stated, the computational expense required to solve optimization problems scales poorly with increasing numbers of design variables without special treatment. When performing control co-design of wind plants, all of the design variables are coupled, resulting in huge numbers of design variables that can easily range up to tens of thousands or more for large wind plants. Problems of this size are infeasible to solve with most current optimization techniques. However, with a fast yaw optimization process, the turbine design and plant layout variables can be decoupled from the yaw angle optimization. If it is fast enough, the yaw optimization can be performed within the plant analysis step, dramatically reducing the number of design variables from tens or hundreds of thousands to fewer than 100.

6 Conclusions

In this paper, we present a novel optimization method to determine the yaw angles of turbines in a wind plant for optimal wake steering. In this method, turbine yaw is defined as Boolean, and the optimization is performed greedily from the most upstream wind turbine to the most downstream. At most, this optimization requires one function call per wind turbine in the plant. We show that with irregular wind turbine layouts [and for the real Princess Amalia Wind Farm](#), the Boolean [yaw](#) optimization performs within about 0.6% of a more traditional, continuous yaw angle definition optimized with a gradient-based algorithm. For [individual directions in](#) a regular grid of wind turbines, or a row of wind turbines in-line with the incoming wind, the Boolean method still achieves most of the power gain as the continuous optimization, with optimal power production within 1.5%–4% of the continuous optimization. The larger discrepancies between the two optimization methods occur in high waking scenarios that have a low probability of occurrence in plants where the layout has been optimized.

In addition to demonstrating the similarity in optimal wind power production achieved by the two different problem [formulations](#) [approach](#) we also showed that the computational expense required to solve the Boolean optimization is much less than that required for the continuous optimization. For any case where the optimal yaw angles were nonzero, the Boolean optimization was around 50–150 times faster than the continuous optimization, with some extreme cases performing about 500 times faster. In addition to the faster computation, our presented Boolean optimization method does not require any scaling of the problem or consideration of the convergence criteria, which removes a large part of the setup time and experience required to solve these optimization problems.

480 This proposed method greatly simplifies the wind power plant yaw optimization process, achieves plant performance that compares well to more sophisticated methods, and does so at a greatly reduced computational expense. ~~This can be applied to the yaw control optimization of large wind plants, gaining further understanding of wind energy potential and the impacts of wake steering on current and future wind plants, and~~ The main impacts that we see for this computationally efficient yaw optimization method is for coupled turbine design, plant layout, and yaw control optimization, and for real-time yaw optimization of wind plants where precomputing all of the possible inflow conditions is infeasible. We expect this new method to have wide and immediate impacts in research and in improving wind plant performance.

7 Future Work

While there are a huge number of future studies and applications that could expand on this work, we identify and discuss three that we believe could be important.

490 First, perform further exploration and develop intuition of the best Boolean yaw angles to use in different wind plants. This could involve studying the sensitivity of the optimal Boolean yaw angle to parameters such as average turbine spacing, turbine design, and wind speed. It could also involve a more sophisticated ~~yaw angle~~ yaw angle selection or optimization in which the Boolean yaw angle is determined by the relative spacing, offset between upstream and downstream wind turbines, or the number of downstream wind turbines that are waked by an upstream turbine. In addition to increasing the wind plant
495 performance, this could further decrease the computational expense of the optimization.

Second, include uncertainty in evaluation of wind plant performance. Past studies have shown that when operating under realistic conditions, in which wind direction and wind speed have significant uncertainty, yaw control strategies should be more conservative, and power gains from wake steering are reduced (Quick et al., 2020; Simley et al., 2020). We expect that when considering uncertainty, the Boolean yaw angle would be affected, and the performance of the plant optimized with the
500 Boolean method would be closer to the continuous method than it was in this paper, in which we assumed wind direction and speed were deterministic.

Third, refine the optimization methods by including more than one yaw angle. This would add to the computational expense of the algorithm, but could improve the wake steering while still keeping the computational expense relatively low. Multiple passes through the plant with refined yaw angles could further improve the performance.

505 Fourth, perform control co-design of wind power plants, and compare the performance and required computational expense of plants that were optimized with a traditional method, in which all of the design variables are coupled, to performing our Boolean yaw optimization within a function evaluation, decoupling the turbine design and plant layout variables from the yaw control. We expect minimal differences in optimized performance with significant reductions in required computational expense.

510 ~~Fourth, refine the optimization methods by including more than one yaw angle~~ Fifth, perform a field study with real-time optimization of yaw angles within a wind plant. This would ~~add to the computational expense of the algorithm, but could~~

~~improve the wake steering while still keeping the computational expense relatively low. Multiple passes through the plant with refined yaw angles could further improve the performance—~~

515 demonstrate the power of the Boolean yaw angle optimization method. We expect that this field demonstration would show that the performance improvements are similar to using a traditional look-up table approach and when performing a real-time optimization. Additionally, we expect that the real-time optimization would be able to be more flexible and react to many more possible inflow and operation scenarios.

Code availability. The code and optimized data for this specific paper can be found at:

<https://github.com/pjstanle/stanley2021-yaw-optimization>

520 Although any wake model could be used, the FLORIS framework that we used for the results in this paper can be found at:

<https://github.com/NREL/floris>

Although the optimizer we used in this paper, SNOPT, is commercial, the pyOptSparse framework is open source. It has options to use open-source optimizers as well. The pyOptSparse optimization framework can be found at:

<https://github.com/mdolab/pyoptsparse>

525 *Author contributions.* AS contributed with Conceptualization, Investigation, Methodology, Software, Visualization, and Writing – original draft preparation. CB contributed with Conceptualization, Software, and Writing – review & editing. RM contributed with Software and Writing – review & editing. PF contributed with Conceptualization, Funding acquisition, Supervision, Writing – review & editing.

Competing interests. The authors declare that they has no known competing financial interests or personal relationships that could have appeared to influence the work reported in this paper.

530 *Acknowledgements.* This work was authored by the National Renewable Energy Laboratory, operated by Alliance for Sustainable Energy, LLC, for the U.S. Department of Energy (DOE) under Contract No. DE-AC36-08GO28308. Funding provided by the U.S. Department of Energy Office of Energy Efficiency and Renewable Energy Wind Energy Technologies Office. The views expressed in the article do not necessarily represent the views of the DOE or the U.S. Government. The U.S. Government retains and the publisher, by accepting the article for publication, acknowledges that the U.S. Government retains a nonexclusive, paid-up, irrevocable, worldwide license to publish or
535 reproduce the published form of this work, or allow others to do so, for U.S. Government purposes.

References

- Adaramola, M. and Krogstad, P.-Å.: Experimental investigation of wake effects on wind turbine performance, *Renewable Energy*, 36, 2078–2086, 2011.
- Administration, U. E. I.: Electric power monthly with data for April 2021, Table ES1.A, Tech. rep., U.S. Department of Energy, 2021a.
- 540 Administration, U. E. I.: Monthly energy review, Table 7.2a, Tech. Rep. DOE/EIA-0035 (2021/6), Office of Energy Statistics, U.S. Department of Energy, 2021b.
- Bastankhah, M. and Porté-Agel, F.: Experimental and theoretical study of wind turbine wakes in yawed conditions, *Journal of Fluid Mechanics*, 806, 506–541, 2016.
- Crespo, A., Herna, J., et al.: Turbulence characteristics in wind-turbine wakes, *Journal of wind engineering and industrial aerodynamics*, 61, 545 71–85, 1996.
- Damiani, R., Dana, S., Annoni, J., Fleming, P., Roadman, J., van Dam, J., and Dykes, K.: Assessment of wind turbine component loads under yaw-offset conditions, *Wind Energy Science*, 3, 173–189, 2018.
- Dar, Z., Kar, K., Sahni, O., and Chow, J. H.: Windfarm power optimization using yaw angle control, *IEEE Transactions on Sustainable Energy*, 8, 104–116, 2016.
- 550 Doekemeijer, B. M., van der Hoek, D., and van Wingerden, J.-W.: Closed-loop model-based wind farm control using FLORIS under time-varying inflow conditions, *Renewable Energy*, 156, 719–730, 2020.
- Dou, B., Qu, T., Lei, L., and Zeng, P.: Optimization of wind turbine yaw angles in a wind farm using a three-dimensional yawed wake model, *Energy*, 209, 118415, 2020.
- Fleming, P., Gebraad, P. M., Lee, S., van Wingerden, J.-W., Johnson, K., Churchfield, M., Michalakes, J., Spalart, P., and Moriarty, P.: 555 Simulation comparison of wake mitigation control strategies for a two-turbine case, *Wind Energy*, 18, 2135–2143, 2015.
- Fleming, P., Churchfield, M., Scholbrock, A., Clifton, A., Schreck, S., Johnson, K., Wright, A., Gebraad, P., Annoni, J., Naughton, B., et al.: Detailed field test of yaw-based wake steering, in: *Journal of Physics: Conference Series*, vol. 753-5, p. 052003, IOP Publishing, 2016a.
- Fleming, P., Annoni, J., Shah, J. J., Wang, L., Ananthan, S., Zhang, Z., Hutchings, K., Wang, P., Chen, W., and Chen, L.: Field test of wake steering at an offshore wind farm, *Wind Energy Science*, 2, 229–239, 2017.
- 560 Fleming, P., King, J., Dykes, K., Simley, E., Roadman, J., Scholbrock, A., Murphy, P., Lundquist, J. K., Moriarty, P., Fleming, K., et al.: Initial results from a field campaign of wake steering applied at a commercial wind farm—Part 1, *Wind Energy Science*, 4, 273–285, 2019.
- Fleming, P. A., Ning, A., Gebraad, P. M., and Dykes, K.: Wind plant system engineering through optimization of layout and yaw control, *Wind Energy*, 19, 329–344, 2016b.
- Gebraad, P., Thomas, J. J., Ning, A., Fleming, P., and Dykes, K.: Maximization of the annual energy production of wind power plants by 565 optimization of layout and yaw-based wake control, *Wind Energy*, 20, 97–107, 2017.
- Gebraad, P. M., Teeuwisse, F., van Wingerden, J.-W., Fleming, P. A., Ruben, S. D., Marden, J. R., and Pao, L. Y.: A data-driven model for wind plant power optimization by yaw control, in: *2014 American Control Conference*, pp. 3128–3134, IEEE, 2014.
- Gebraad, P. M., Teeuwisse, F., Van Wingerden, J., Fleming, P. A., Ruben, S., Marden, J., and Pao, L.: Wind plant power optimization through yaw control using a parametric model for wake effects—a CFD simulation study, *Wind Energy*, 19, 95–114, 2016.
- 570 Gill, P. E., Murray, W., and Saunders, M. A.: SNOPT: An SQP algorithm for large-scale constrained optimization, *SIAM review*, 47, 99–131, 2005.
- Grady, S., Hussaini, M., and Abdullah, M. M.: Placement of wind turbines using genetic algorithms, *Renewable energy*, 30, 259–270, 2005.

- Howland, M. F., Bossuyt, J., Martínez-Tossas, L. A., Meyers, J., and Meneveau, C.: Wake structure in actuator disk models of wind turbines in yaw under uniform inflow conditions, *Journal of Renewable and Sustainable Energy*, 8, 043 301, 2016.
- 575 Jensen, N. O.: A note on wind generator interaction, 1983.
- Kanev, S.: Dynamic wake steering and its impact on wind farm power production and yaw actuator duty, *Renewable energy*, 146, 9–15, 2020.
- Katic, I., Højstrup, J., and Jensen, N. O.: A simple model for cluster efficiency, in: *European wind energy association conference and exhibition*, vol. 1, pp. 407–410, A. Raguzzi Rome, Italy, 1986.
- King, J., Fleming, P., King, R., Martínez-Tossas, L. A., Bay, C. J., Mudafort, R., and Simley, E.: Control-oriented model for secondary effects
580 of wake steering, *Wind Energy Science*, 6, 701–714, 2021.
- Kragh, K. A. and Hansen, M. H.: Load alleviation of wind turbines by yaw misalignment, *Wind Energy*, 17, 971–982, 2014.
- Lin, M. and Porté-Agel, F.: Power Maximization and Fatigue-Load Mitigation in a Wind-turbine Array by Active Yaw Control: an LES Study, in: *Journal of Physics: Conference Series*, vol. 1618-4, p. 042036, IOP Publishing, 2020.
- Lyu, Z., Xu, Z., and Martins, J.: Benchmarking optimization algorithms for wing aerodynamic design optimization, in: *Proceedings of the
585 8th International Conference on Computational Fluid Dynamics*, Chengdu, Sichuan, China, vol. 11, 2014.
- Marmidis, G., Lazarou, S., and Pyrgioti, E.: Optimal placement of wind turbines in a wind park using Monte Carlo simulation, *Renewable energy*, 33, 1455–1460, 2008.
- Mosetti, G., Poloni, C., and Diviacco, B.: Optimization of wind turbine positioning in large windfarms by means of a genetic algorithm, *Journal of Wind Engineering and Industrial Aerodynamics*, 51, 105–116, 1994.
- 590 Ning, A. and Petch, D.: Integrated design of downwind land-based wind turbines using analytic gradients, *Wind Energy*, 19, 2137–2152, 2016.
- NREL: FLORIS. Version 2.4, <https://github.com/NREL/floris>, 2021.
- Park, J., Kwon, S., and Law, K. H.: Wind farm power maximization based on a cooperative static game approach, in: *Active and Passive Smart Structures and Integrated Systems 2013*, vol. 8688, p. 86880R, International Society for Optics and Photonics, 2013.
- 595 Quick, J., King, J., King, R. N., Hamlington, P. E., and Dykes, K.: Wake steering optimization under uncertainty, *Wind Energy Science*, 5, 413–426, 2020.
- Rios, L. M. and Sahinidis, N. V.: Derivative-free optimization: a review of algorithms and comparison of software implementations, *Journal of Global Optimization*, 56, 1247–1293, 2013.
- Simley, E., Fleming, P., and King, J.: Design and analysis of a wake steering controller with wind direction variability, *Wind Energy Science*,
600 5, 451–468, 2020.
- Simley, E., Fleming, P., Girard, N., Alloin, L., Godefroy, E., and Duc, T.: Results from a wake-steering experiment at a commercial wind plant: investigating the wind speed dependence of wake-steering performance, *Wind Energy Science*, 6, 1427–1453, 2021.
- Stanley, A. P. and Ning, A.: Coupled wind turbine design and layout optimization with nonhomogeneous wind turbines, *Wind Energy Science*, 4, 99–114, 2019.
- 605 Stokes, L. C. and Warshaw, C.: Renewable energy policy design and framing influence public support in the United States, *Nature Energy*, 2, 1–6, 2017.
- Thomas, J. J. and Ning, A.: A method for reducing multi-modality in the wind farm layout optimization problem, in: *Journal of Physics: Conference Series*, vol. 1037, p. 042012, IOP Publishing, 2018.
- Thomas, J. J., Gebraad, P. M., and Ning, A.: Improving the FLORIS wind plant model for compatibility with gradient-based optimization,
610 *Wind Engineering*, 41, 313–329, 2017.

- Wiser, R., Rand, J., Seel, J., Beiter, P., Baker, E., Lantz, E., and Gilman, P.: Expert elicitation survey predicts 37% to 49% declines in wind energy costs by 2050, *Nature Energy*, 6, 555–565, 2021.
- Wu, N., Kenway, G., Mader, C. A., Jasa, J., and Martins, J. R.: pyOptSparse: A Python framework for large-scale constrained nonlinear optimization of sparse systems, *Journal of Open Source Software*, 5, 2564, 2020.
- 615 Zingg, D. W., Nemeč, M., and Pulliam, T. H.: A comparative evaluation of genetic and gradient-based algorithms applied to aerodynamic optimization, *European Journal of Computational Mechanics/Revue Européenne de Mécanique Numérique*, 17, 103–126, 2008.