

High-fidelity aeroelastic analyses of wind turbines in complex terrain: Fluid-Structure Interaction and aerodynamic modelling

Giorgia Guma¹, Philipp Bucher², Patrick Letzgus¹, Thorsten Lutz¹, and Roland Wüchner³

¹Institute of Aerodynamics and Gas Dynamics, University of Stuttgart, Pfaffenwaldring 21, 70569 Stuttgart, Germany

²Chair of Structural Analysis, Technical University of Munich, Arcisstr. 21, 80333 Munich, Germany

³Institute of Structural Analysis, Technische Universität Braunschweig, Beethovenstr. 51, 38106 Braunschweig, Germany

Correspondence: Giorgia Guma (guma@iag.uni-stuttgart.de)

Abstract. This paper shows high-fidelity Fluid Structure Interaction (FSI) studies applied on the research wind turbine of the WINSENT project. In this project, two research wind turbines are going to be erected in the South of Germany in the WindForS complex terrain test field. The FSI is obtained by coupling the CFD URANS/DES code FLOWer and the multiphysics FEM solver Kratos, in which both beam and shell structural elements can be chosen to model the turbine. The two codes are coupled in both an explicit and an implicit way. The different modelling approaches strongly differ with respect to computational resources and therefore the advantages of their higher accuracy must be correlated with the respective additional computational costs. The presented FSI coupling method has been applied firstly to a single blade model of the turbine under standard uniform inflow conditions. It could be concluded that for such a small turbine, in uniform conditions a beam model is sufficient to correctly build the blade deformations. Afterwards, the aerodynamic complexity has been increased considering the full turbine with turbulent inflow conditions generated from real field data, in both a flat and complex terrains. It is shown that in these cases a higher structural fidelity is necessary. The effects of aeroelasticity are then shown on the phase-averaged blade loads, showing that using the same inflow turbulence, a flat terrain is mostly influenced by the shear, while the complex terrain is mostly affected by low velocity structures generated by the forest. Finally, the impact of aeroelasticity and turbulence on the Damage Equivalent Loading (DEL) is discussed, showing that flexibility is reducing the DEL in case of turbulent inflow, acting as a damper breaking larger cycles into smaller ones.

1 Introduction

According to the "Renewable Energy Statistics 2020" of the International Renewable Energy Agency (IRENA), the global installed wind power capacity increased by a factor of almost 83 in the last twenty years, from around 7.5 GW in 1997 to around 622 GW in 2019. In 2018 wind energy represented around 19% of the total electricity produced by renewables worldwide. This makes wind energy the most growing renewable power technology nowadays. One of the reasons for its extreme development is the strong investment in the research of new materials and construction techniques in order to reach larger and lighter rotor designs. According to (IEA), the global average cost of electricity from onshore fell from 76 USD/MWh in 2016 to 53 USD/MWh in 2019, and it is expected to decrease 15% during 2020-2025, expanding the market of bankable projects to low wind speed areas and complex terrains. A complex terrain is a terrain where topology and roughness have a

25 significant impact on the wind in the Atmospheric Boundary Layer (ABL). For this reason, differently from an offshore wind turbine that is characterized by high inflow velocities and low Turbulence Intensity (TI), a complex terrain has exactly the opposite attributes. This makes it difficult to estimate the wind potential and consequently the performances of the installed wind turbine. **R2:S4** Therefore high-fidelity is necessary to simulate the site-specific wind field and turbulence. It needs to be considered that the produced power of a turbine is proportional to the cube of the velocity, and therefore a 3% error in the velocity leads to a 9% error in the power calculation. Those effects can be already mapped using RANS methods as in Brodeur and Masson (2008). On the other side, higher fidelity models such as hybrid RANS/LES are needed to catch the effects on the turbulence of smaller vortices from the ground (Bechmann and Sørensen, 2010). The applicability of Detached Delayed Eddy Simulations (DDES) for wind turbines was shown by Weihing et al. (2018), while DDES investigations of a complex terrain have been conducted by Schulz et al. (2016), focusing on the performance of the turbine. A widely studied complex terrain is the double ridge in Perdigo in Portugal, where a single turbine has been erected with consequent measurements campaigns in 2017 (Fernando et al., 2019). On the other side, the increase of rotor sizes with the consequent necessity of slender blades makes it impossible to neglect aeroelastic effects **R2:S5** and that is why aeroelastic models based on different fidelity levels are widely developed within the research community. DTU, for example, widely uses the Fluid Structure Interaction (FSI) coupled developed by Heinz et al. (2013) and known as HAWC2CFD between the CFD solver EllipSys3D (Sørensen, 1995; Michelsen, 1992) and the finite-element multibody serial solver HAWC2 (Larsen and Hansen, 2007). Heinz et al. (2016a) used it on the NREL 5 MW rotor and compared it to Blade Element Momentum (BEM) based calculations using HAWC2, too. Most discrepancies were shown when the turbine was in standstill, although good agreement was found in uniform and yawed conditions. Li et al. (2017) **R1:S23** used the same turbine adding a turbulent inflow synthetically generated by the use of a Mann box, a multibody drivetrain and a control system. He showed that an active pitching control lead to a more uniformly distributed wake even in turbulent inflow conditions, in comparison to a stall regulated study. The same coupling has been used in Heinz et al. (2016b) to perform studies on Vortex Induced Vibrations (VIV). In this case a single blade model of the DTU 10 MW wind turbine has been take into account finding that the conditions triggering VIV are an Angle Of Attack (AOA) of around 90° and a flow inclination between 20° and 55°. Horcas et al. (2020) continued his work analyzing for the same turbine the effect of different tip configurations on the VIV phenomenon. Recently, the HAWC2CFD FSI coupling has been used by Grinderslev et al. (2021) to aeroelastically investigate the 2.3 MW DANAERO rotor using a new turbulence model, combining the Deardorff large eddy simulation (LES) model for atmospheric flow with improved detached delayed eddy simulation (IDDES) model for the near rotor area. The authors found that for such stiff turbines, flexibility has only a marginal effect, while the loading was strongly affected by the inflow turbulence, underlining the importance of its modelling.

Santo et al. (2020a) used a FSI coupling between a CFD URANS model in Ansys and a structural shell model in Abaqus to analyze the effects of tilt, yaw, tower shadow and wind shear. The authors found that yaw leads to a lower deflection but a higher yaw-moment on the hub. In Santo et al. (2020b), gusts were introduced showing that in the considered case, flow separation was occurring working as a passive load control.

Streiner et al. (2008), Meister (2015) and Klein et al. (2018) worked sequentially on a FSI coupling between the CFD code FLOWer and the Multi-Body Simulation (MBS) commercial solver SIMPACK. In Klein et al. (2018), the NREL 5 MW wind

60 turbine has been simulated, including the drive train torsion, the foundation flexibility and the controller for variation of RPM and pitch angle, examining thereby the origin of low frequency noise sources and seismic excitation. The same coupling has been then used in Guma et al. (2021) to simulate the DANAERO wind turbine in both uniform and turbulent conditions, these ones synthetically generated by the use of a Mann box (Mann, 1994). Results in uniform inflow were compared to a consistent low-fidelity model and analysis on the effects on the Damage Equivalent Loading (DEL) have been carried out. Here it was
65 demonstrated that for the specific inflow case, the deformations have only a marginal influence on the DEL, that shows to be more affected by the inflow turbulence fluctuations. The same CFD solver was coupled by Sayed et al. (2016) to the CSD solver Carat++ and applied to a only blade model of the DTU 10 MW generic rotor under uniform inflow conditions. Both beam and shell elements have been applied showing that an evident error is made when geometric non-linearities are not taken into account.

70 Dose et al. (2018) coupled the flow solver OpenFOAM to the FEM-based beam solver BeamFOAM to perform simulations of the NREL 5 MW rotor, showing that aeroelasticity is particularly important when a yaw misalignment is taken into account. The same rotor was adopted by Yu and Kwon (2014) using a loose CFD-CSD coupling with an incompressible CFD solver and non-linear Euler-Bernoulli beam elements for the structure. The communication in this case was only once per revolution. The same turbine was also used by Bazilevs et al. (2011) and Bazilevs et al. (2012) by means of FSI between a low-order Arbitrary
75 Lagrangian-Eulerian Variational Multi Scale (ALE-VMS) flow solver and a Non-Uniform Rational Basis Spline (NURBS) based structural solver. An Isogeometric analysis (IGA) has been used in this case, that integrates FEM in the CAD tool so that no geometric approximation is needed. This increases its accuracy and simplicity, especially for form optimization chains.

Within the scope of the present study, a highly accurate CFD-FEM coupling has been built and a model has been created for a small research wind turbine to be erected in a complex terrain location in the South of Germany. Two different structural
80 models and coupling algorithms have been used to determine their impact in different inflow configurations. Starting from a single blade model and a full model of the turbine in uniform standard conditions, up to the turbulent inflow conditions in both flat and complex terrain, the difference in deformations, wake shape, loads and fatigue are analyzed. Considering the strong variation in computational costs within the different configurations, it is of particular interest to determine the respective fidelity requirements. Sect. 2 describes the methodology, from the CFD to the CSD models and the construction of the coupling. Sect.
85 3 shows the results firstly for a single blade model, then for the full turbine focusing on the wake shape, the impact of the terrain and effects on the fatigue loading.

2 Methodology

2.1 WINSENT research wind turbine

The project WINSENT (Wind Energy Science and Engineering in Complex Terrain) is a German project (WindForS, 2016)
90 involving different universities and research institutions in the South of Germany. The site is located in Stöttener Berg, a complex terrain location in the Swabian Alb (Fig. 1) **R2:S6**, where two research wind turbines will be erected. These will be pitch-regulated, and will have around 50 m diameter, 70 m hub height, a tilt angle of 4°, a cone angle of 2.5° and a rated



Figure 1. WindForS test field in Stöttener Berg (from Testfield) with focus on the two met masts.

power of around 750 kW, by a rated inflow velocity of 11 m/s and a rotor speed of 26.5 RPM. They will be equipped with measuring technique for the validation of both high (presented in this work) and low fidelity. A computational chain has been developed within the project, starting from mesoscale simulations up to high-fidelity FSI calculations in the near field around the turbine. A large variety of measurement equipment has been used to characterize the local site-specific wind field, such as unmanned aerial systems (UAS), lidar instruments and met masts with ultrasonic anemometers. This allowed to validate CFD terrain calculations with the data from the met masts as prescribed in Letzgus et al. (2020).

This paper focuses on the final part of the simulation chain, in which the CFD terrain calculations are used as inflow conditions to analyze the aeroelastic effects on the research wind turbine by means of high-fidelity FSI.

Starting from the provided CAD file and material properties, models with different degree of fidelity have been built.

2.1.1 CFD model and inflow conditions

The CFD code used within this study is FLOWer (Raddatz, 2009). This was originally developed at the German Aerospace Centre (DLR) and since many years it is expanded at the Institute of Aerodynamics and Gas Dynamics for helicopters and wind turbines purposes. It is a finite volume URANS and DES code, using structured meshes. Both a second order central cell centered (Jameson et al., 1981) and fifth order weighted essentially non-oscillatory (Kowarsch et al., 2013) spatial discretization schemes are available. The second one is utilized in the background meshes in this study to reduce the turbulence dissipation. A dual-time stepping integration scheme is applied, in which the number of inner iteration of a timestep t is depending on how close a guessed solution is to the final value, based on a prescribed tolerance. An artificial 5-stage Runge-Kutta scheme is used as time-stepping scheme. Up to three level of multigrid can be utilized to accelerate convergence, although a complex terrain mesh is not suited for it. Single meshes for each component need to be independently generated and then combined by means of the Chimera technique. The Shear-Stress-Transport (SST) k-omega model according to Menter (Menter, 1993) with a fully turbulent boundary layer is used to for the simulations in this study. **R1:S7** URANS has been here used for all cases with uniform inflow conditions, while DDES has been activated when turbulence was involved. In this way the turbulence propagation is resolved by LES, while the areas close to the wall and therefore the boundary layer are resolved by URANS. Bangga

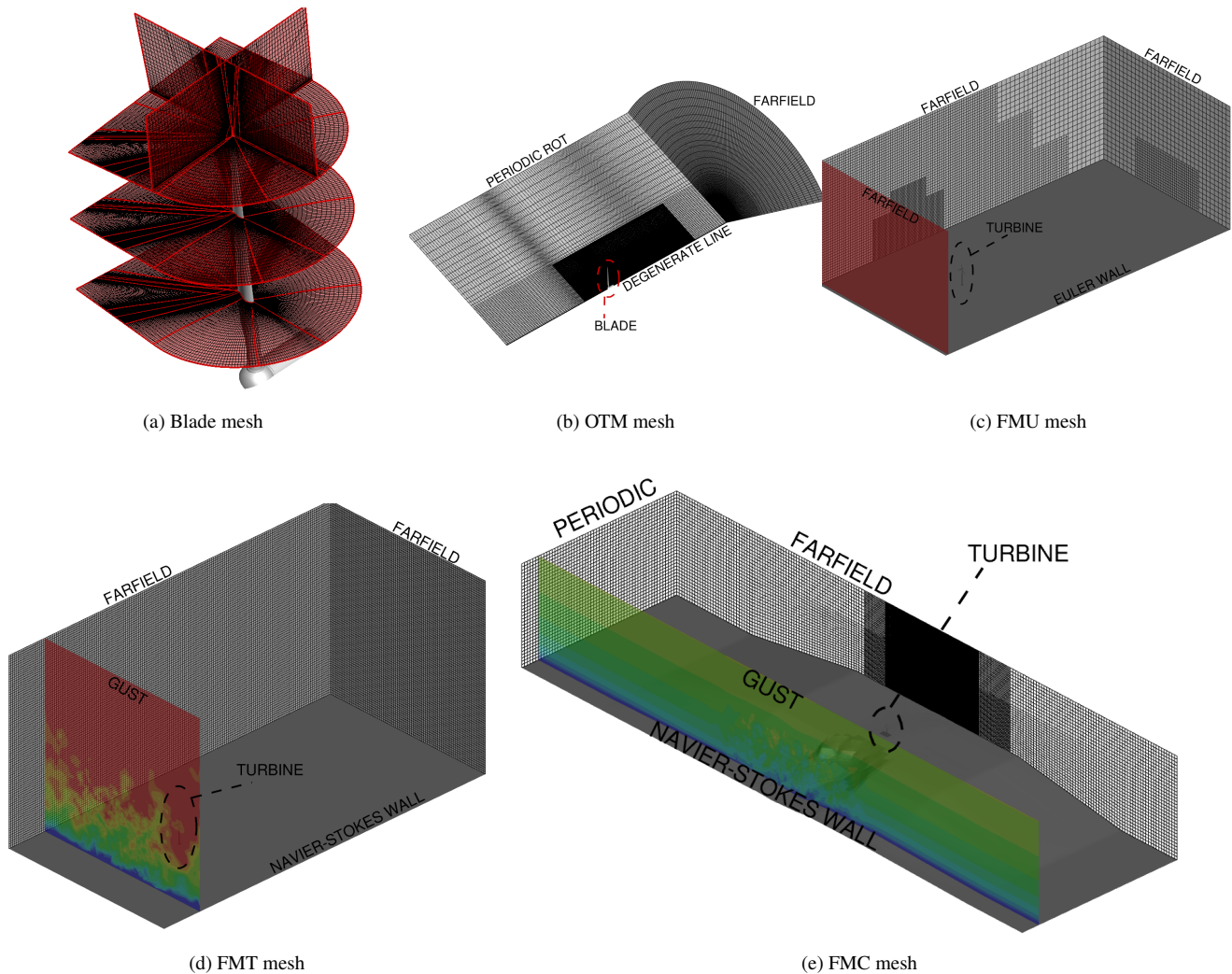


Figure 2. Details of the meshes

et al. (2017) showed DDES combined to this turbulence model showed the most stable and best results compared to measured data. The CFD model of the turbine has been built starting from the provided CAD files. A "water tight" outer surface has been extracted and meshing has been performed with both use of Pointwise and in-house scripts. All components have been meshed ensuring $y^+ \leq 1$ of the wall nearest cell. A mesh refinement study of the blade has been done in (Guma et al., 2018), (Schäffler, 2019). **R1:S6** According to these studies, different mesh properties, characteristics and sizes have been tested to optimize the profile, the trailing and leading edge resolutions, as well as the wake and pinion areas. Different timesteps and number of iterations have been also tested, although always at rated conditions. For this reason the second cheapest number of cells has been then chosen, in order to remain conservative and in line with other similar works performed with the same code. The blade mesh in Fig. 2a has been generated with the following properties:

Case name	Blade	Hub + Nacelle	Tower	Background	Total
One Third Model (OTM)	1 x 11	2	-	18	24
Full Model Uniform (FMU)	3 x 11	5.5	3	40	85
Full Model Turbulent (FMT)	3 x 11	5.5	3	105	148
Full Model Complex (FMC)	3 x 11	5.5	3	300	345

Table 1. Mesh sizes in Mio.

Case name	Flow Direction	Side Direction	Height
OTM	-3D;+3.5D	120°	3D
FMU	-7.5D;+19.5	±7D	10D
FMT	-7.5D;+18.5D	±6.5D	13D
FMC	-22.5D;+10D	±65D	46D

Table 2. Background dimensions in rotor diameters from the tower bottom. Values are approximated and referred to the tower center.

- 125
- CH mesh;
 - 193 sections over the blade with 257 points over the each profile;
 - 32 cells in the boundary layer with a growth rate of 1.11;
 - a total of around 12 million cells for each blade;

Three different CFD models of the turbine have been built with the following characteristics and abbreviations:

- 130
- a one-third model with only one blade (OTM) and uniform inflow conditions (Fig. 2b);
 - a full model of the turbine with a flat terrain with uniform (FMU) (fig 2c) or turbulent inflow conditions (FMT) (Fig. 2d);
 - a full model of the turbine with a complex terrain (FMC) and turbulent inflow conditions (Fig. 2e);

135 Thanks to the Chimera technique, the turbine CFD mesh is always the same for the different models, changing only the background grids.

140 Table 1 gives a breakdown of the mesh sizes in number of cells for the different setups (that consequently influence the costs of the calculations). The different boundary conditions and CFD models are depicted in Fig. 2. Additionally in Table 2 the dimensions of the different backgrounds are shown in terms of distances from the tower bottom. **R1:S3** The complex terrain mesh is clearly much wider than longer, and this is done to avoid any influence of the interaction between the periodic boundary condition and the topography, as explain in Letzqus et al. (2021). **R1:S4** The mesh discretization occurs via hanging grid nodes, ensuring in the closes area to the turbine a resolution of 0.25m, increasing up to 2 m for a large area of the domain to ensure a sufficient physical resolution. In the following the meaning of the boundary conditions is clarified:

Case name	u Hub Height [m/s]	TI [%]	Shear α [°]	Pitch angle [°]	RPM	Terrain
OTM	11 m/s	0	0	2.59	26.5	No
FMU	11 m/s	0	0	2.59	26.5	Flat
FMT	16.5 m/s	9	0.2	17.46	26.5	Flat
FMC	16.5 m/s	9	0.2	17.46	26.5	Complex

Table 3. Setup of the computed cases (effective conditions at the turbine position).

- NAVIER-STOKES WALL represents the ground and surface boundary conditions considering friction;
- EULER-WALL represents the ground boundary conditions with no friction;
- 145 – FARFIELD, where either a fixed velocity or a zero extrapolation conditions can be set for the background border;
- PERIODIC & PERIODIC ROT are the symmetrical boundary conditions in axial and rotational direction, respectively;
- GUST is the FLOWer boundary condition to use when a wind profile and turbulent fluctuations from experiments (or synthetic turbulence) have to be injected in the flow;

The flat terrain for FMU and FMT is different, because in FMU no wind profile and no inflow turbulence are considered, and therefore it was possible to use a smaller background and increase the cell size, saving in this way computational time. Table 3 summarizes the operating conditions at which the simulations are run with the corresponding RPM and pitch angles of the turbine. No controller is considered in the simulations, i.e. both RPM and pitch angle are kept constant. OTM and FMU represent the rated conditions of the blade, while FMT and FMC are based on sheared turbulent inflow conditions extracted from real wind measurements on the 31st March 2019 at 11 p.m.

155 The chosen timestep is the same for all coupled simulations and is related to one azimuthal degree. **R1:S2** This has been chosen to be stricter than for the only stiff simulation, that for example, in the complex terrain case was set to two azimuthal degrees. On the other side, Sayed et al. (2016) showed that for the previous version of the her used coupling, a one azimuthal degree timestep is necessary. The number of sub iterations needs to be adapted according the coupling type, and this will be addressed in the following sections. The turbulence is injected in terms of fluctuations that are superimposed to a sheared uniform inflow. The fluctuations have been extracted from experimental time series at the WINSSENT test field from already installed met masts. **R1:S8** The spectra and standard deviations of all velocity components of the different measurement positions have been extracted and synthetic turbulence was then generated with the Mann model. The main focus was to match the measured turbulence as good as possible, especially at the hub height. Important was then to make the cases with flat and with complex terrain as consistent as possible. That is why, while the turbulence fluctuations were kept the same, the wind shear coefficient and the mean velocity had to be accordingly changed to keep after the slope the the same shear and hub height velocity for both cases at the turbine position. This is necessary because the hill of the complex terrain has an acceleration effect on the flow and therefore a lower reference velocity has to be taken into account upstream of the hill, in order to get the same mean

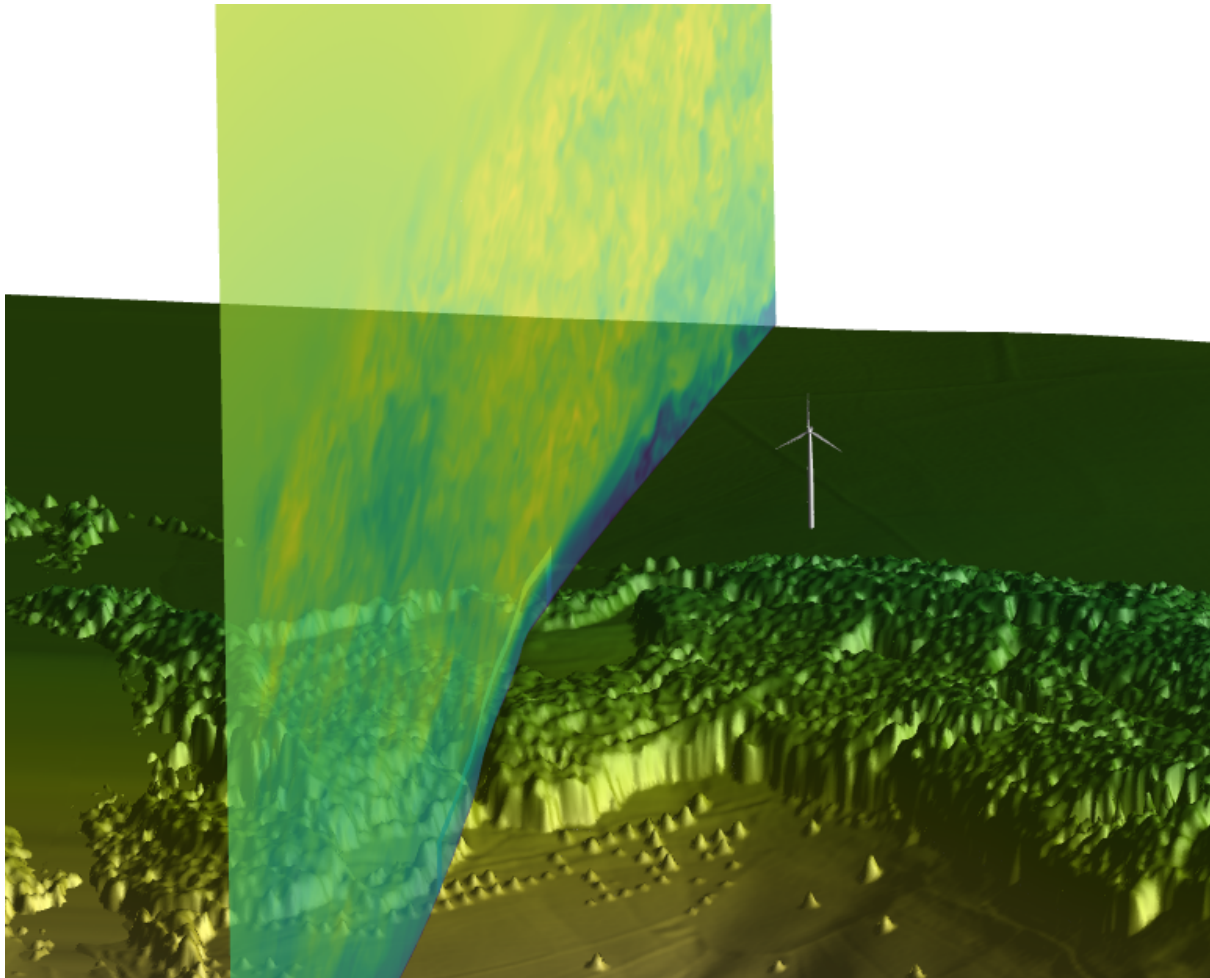


Figure 3. CFD model of the complex terrain considering the forest with a slice of the velocity field 2.5 diameters from the turbine on its right hand side.

hub velocity between flat and complex terrain. **R1:S9** In the observed time period the atmosphere was neutrally stratified.

R2:S7 More information on how the turbulence is injected inside the computational domain is given in Letzgus et al. (2021).

170 The CFD model of the complex terrain is depicted in Fig. 3, where also the presence of the forest can be noticed. The forest is modeled as additional grid structures by the use of the Chimera technique, in which force terms are added depending on the foliage density and tree height, as described in Letzgus et al. (2020). In this way the modeling can be really easily adjusted to the seasonal conditions and the form of the forest.

Number of nodes		
Coupled Structure	Beam	Shell
Blade 1 (2 or 3)	133	13824
Hub	1	1
Nacelle	1	7361
Tower	36	7967

Table 4. Number of nodes/elements for each structure in both beam and shell models.

f [Hz]	Manufacturer	Beam	Shell
1 st flap	1.3	1.34	1.38
1 st edge	2.2	2.25	2.18
2 nd flap	3.8	3.92	3.99
2 nd edge	6.8	6.98	6.53

Table 5. Comparison of the first 4 eigenfrequencies of the blade.

2.1.2 CSD models

175 The CSD code applied within this study is the solver Kratos Multiphysics (Dadvand et al., 2010). **R2:S8** Kratos was utilized to
both generate the structural models and calculate the structural response. Additionally, it served as coupling interface between
the solvers.

Two structural models have been created for the turbine, one with beam and one with shell elements, respectively. Both
models take into account geometric non-linearities and nonlinear dynamic analysis is applied to solve the turbine structural
180 model. The main physical differences between both models is that in a beam model **R2:S9** neglects the cross section aerody-
namic shape deformation. Secondly, the beam theory implemented into Kratos does not consider bend-twist coupling, while
the shell theory contemplates it intrinsically. Rayleigh damping is used to model the damping properties of the turbine, adapting
the coefficients to each single coupled structure.

From a practical point of a view, a beam and a shell model strongly differ on the number of computational nodes, as shown
185 in table 4, in which it can be noticed that the hub has been modeled in both cases as an only point. This influences directly the
computational time. Both structural models are depicted in Fig. 4c.

The shell coupling needs a mapper to interpolate the loads between the CFD and CSD meshes. In this study the Mortar
mapper (Wang, 2016) is chosen in Kratos, as before in Sayed et al. (2016). This is not necessary to map the deformations,
because these are directly communicated to FLOWer which uses them as a cloud of points around the structures, deforming
190 them according to a Radial-Basis Function (RBF) algorithm.

In Kratos it is possible to evaluate the eigenfrequencies of the structural model. The manufacturer delivered the first four
eigenfrequencies of the blade, that are therefore compared in table 5 to the beam and shell models, respectively.

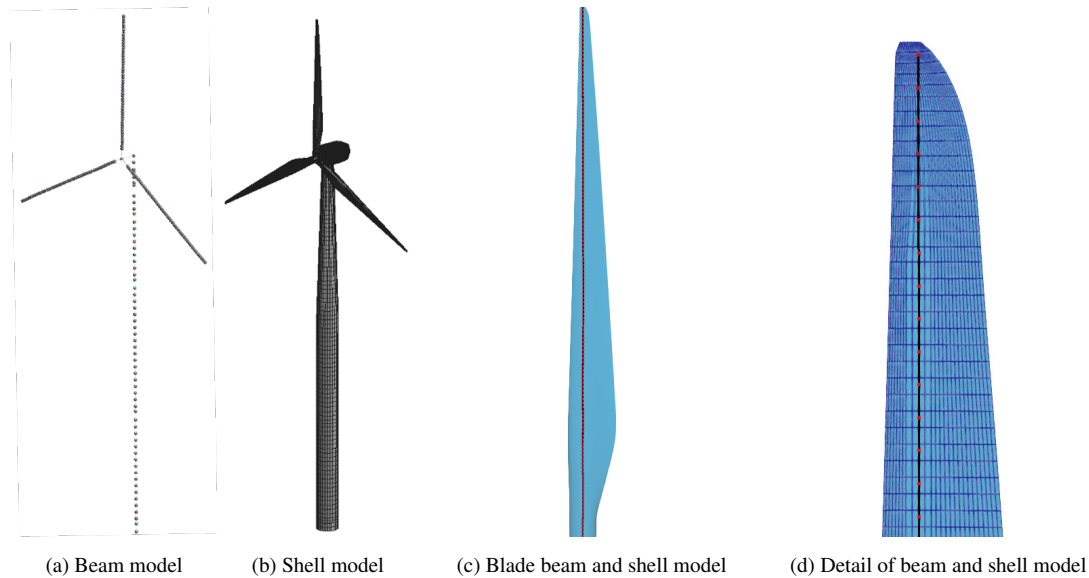


Figure 4. Beam and shell structural models

R2:S14 The entire turbine is modeled in both beam and shell models, in which it is clear from Table 4 that the rotor represents around 90% and 80% of the total amount of cells for beam and shell, respectively. For more information about the structural models used within this study, please refer to Bucher et al..

2.1.3 FSI coupling and performances

The FLOWer-Kratos coupling has been developed within the WINSSENT project in cooperation with TUM-LST. It is based upon the coupling employed by Sayed et al. (2016) within FLOWer and Carat++. It consists of a partitioned approach with both explicit and implicit algorithms, i.e. the communication between the two solvers happens once (explicit) or several times (implicit) per physical timestep. Both nonlinear beam and shell elements can be coupled and both rotating and non-rotating components can be taken into account, allowing to consider the aeroelasticity of the complete turbine. The communication bases on fileIO and the logic tree is depicted in Fig. 5. The two solvers start independently, and a mesh initialization check takes place at the beginning to ensure a correct mapping of forces and deformations between the CFD and CSD meshes. Kratos is the first solver sending either zero deformations (at the very first coupling timestep) or the last saved deformations. FLOWer deforms the surface and the surrounding meshes according to a Radial-Basis-Function (RBF) algorithm. A direct application of the deformation occurs during the shell coupling, because the deformations are mapped by Kratos directly on the real CFD surface grid. Afterwards, the timestep calculation as prescribed in Sec. 2.1.1 takes place and the resulting aerodynamic forces are calculated. These are either the forces on the three directions in space over all surface cells (in case of shell coupling) or three forces and three moments integrated according to the communication nodes (in case of a beam coupling). Kratos receives the input from FLOWer, maps it on the structural mesh and adds the centrifugal and gravitational forces. The structural timestep

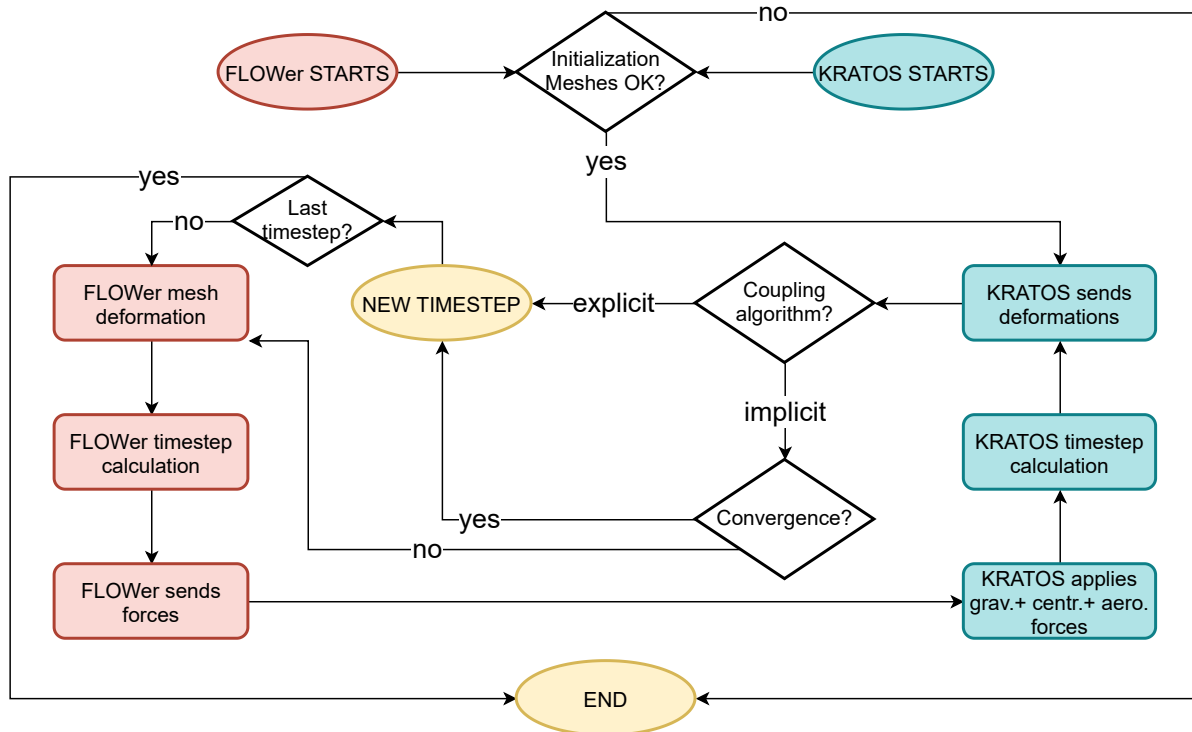


Figure 5. Logic tree of the FSI coupling.

is then performed and the resulting deformations are calculated. In case of an explicit coupling, a new physical timestep starts. If the chosen algorithm is implicit, the timestep is repeated until reaching a predefined convergence criteria of the deformations.

One of the main differences between a beam and a shell coupling is the number of Degrees of Freedom (DOF) necessary to fully described the total deformation. A beam element needs 6 DOF (3 translations and 3 rotations) that are calculated in
 215 Kratos on prescribed nodes at the shear centers. On the other side, a shell only requires 3 translations because the entire outer shape of the turbine is taken into account. The choice of the shear centers as communication nodes in the beam coupling is not casual, because a beam model in Kratos is not considering bend-twist coupling. The shear center is by definition the point on which a shear force causes no twist, and a torque moment causes no displacement of the shear center, as described also in Fedorov (2012). A shell model, on the other side, considers intrinsically a bend-twist coupling. As shown in the structural
 220 model description in Sec. 2.1.2, a shell model has many more nodes than a beam model, and therefore its computational time is not negligible anymore as in the case of a beam model. All calculations have been run on the SuperMUC-NG supercomputer at the Leibniz-Rechenzentrum in Munich and an example of computational time for each configuration is given in table 6.

CFD / CSD	Rigid	Beam Coupling	Shell Coupling
Only Blade	5.28	7.92 (~ 100% FLOWer)	13.2 (~ 75% FLOWer)
Full Turbine	47.6	70.56 (~ 100% FLOWer)	117.6 (~ 70% FLOWer)

Table 6. Performance of the FSI coupling based on beam and shell elements in comparison to pure CFD calculations. CPU/h per timestep (one azimuthal degree) in average over one revolution.

As it can be seen, FSI computations based on a beam model of the blade/turbine increases the computational time of around 50%. The CSD calculation time is negligible in this case and almost the entire computational time is driven by the CFD part. The increase in computational time is because the number of inner iteration per timestep had to increase in order to reach the same convergence level as only CFD. Shell based FSI calculations have additionally a longer computational time of the CSD solver, due to the high number of structural elements, **R2:S10** which results in CFD representing only ~ 75% of the average timestep. The computational time of the case "Full Turbine" is considered for uniform inflow conditions, which is the cheapest case from the CFD side.

R1:S5 All coupled simulations that will be analyzed in the following sections started from already run stiff cases in order to accelerate the convergence in flexible conditions and reduce the transition times.

3 Results

3.1 One-third model (OTM) with laminar uniform inflow

A OTM calculation of a wind turbine is a highly efficient way to get a first insight into the turbine performances and, in the case of the development of a new FSI coupling, to test its functioning, capabilities and limitations. **R2:S11** The rigid simulation of the OTM case has been firstly run for more than 20 revolutions to ensure the loads convergence and the correct wake development. Afterwards, five revolutions have been computed with flexibility using a timestep equivalent to one azimuthal degree with an explicit algorithm, reaching the complete convergence of the deformations. As described in Sec. 2.1.2, the two structural models are consistent within each other, and the tip deflection differ less than 1%. Linear models lead to a nonphysical elongation of the blade when bending. This drives to large errors in the deformation evaluation, especially when long blades are taken into account. In fact the elongation generates a larger surface of the blade with consequent higher loads and therefore larger bending deformations. This is not happening with the nonlinear models applied in this study, as it can be seen in Fig. 6a.

The tip deformations in flapwise and edgewise direction are depicted in Fig. 6b and 6c. The Normalized Root Mean Square Deviation (NRMSD) is around 1% and therefore negligible. **R2:S13** Because the damping is exactly implemented in the same way in both models, this difference is to be associated only to the structural model. The sectional torsion has been calculated from the surface output files, because the shell coupling communicates only the displacements in the three directions. A reference section at the tip of the rigid blade has been taken into consideration, and its indexes have been used to find the same

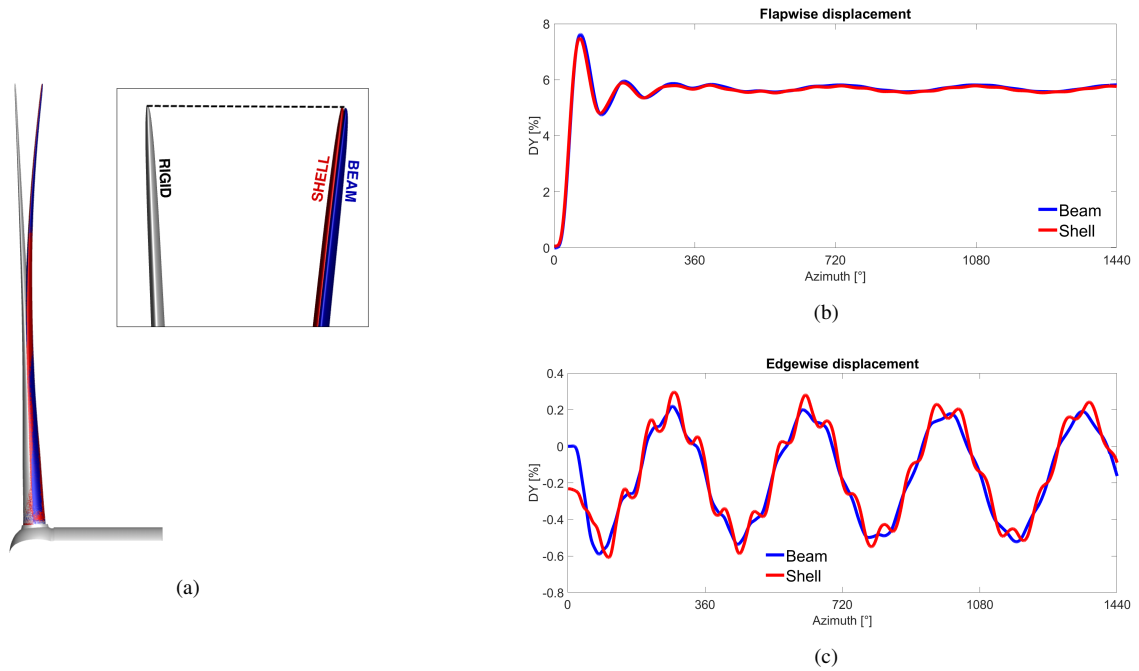


Figure 6. One-third model (OTM), rigid and deformed blade beam vs shell. **R2:S12** Deformations are normalized according to the blade radius and shown as percentage of the of it.

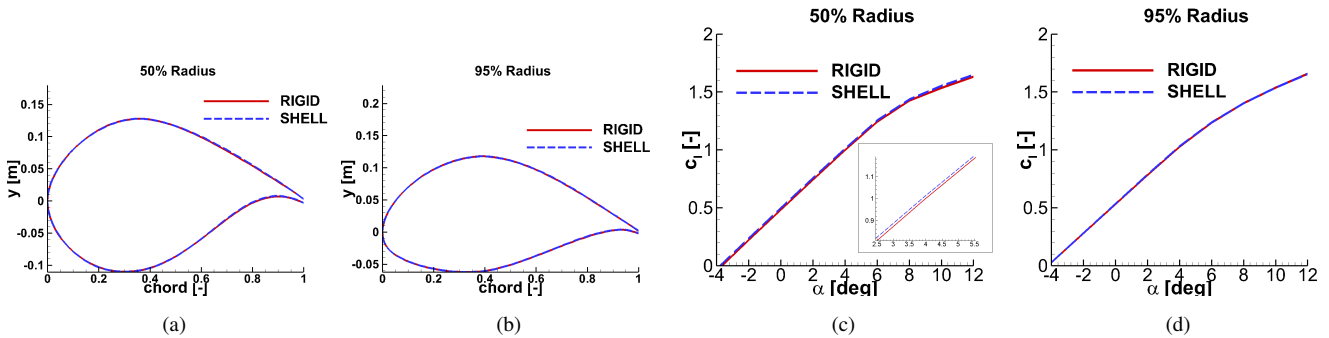


Figure 7. Blade sections enlarged in y-direction and c_l calculations for $r/R=50\%$ and $r/R=95\%$.

section on the deformed blades. The deformed sections have been afterwards unrotated using the Rodrigues' rotation formula to make them parallel to the rigid section. Aligning then the leading edges, it is possible to evaluate the torsion angle at the section. The average value of the torsion in case of beam coupling is 0.1138° , while for the shell model is 0.138° . The blade is really small and that is why the torsion is negligible. The small difference between beam and shell is to be reconnected to the neglecting of bend-twist coupling in the beam model.

An added value of a shell model is that airfoil deformation can be predicted. Although this can be really limited, noticeable changes in the camber can have an impact in terms of lift and drag coefficients of the airfoil (i.e. the polars). That is why 2 sections of the deformed and undeformed blade have been extracted, opportunely rotated to make them parallel within each other and analyzed with Xfoil (Drela, 1989) afterwards. Viscous polar calculations have been performed fixing $Re=4e06$ and $Mach=0.19$. The results are depicted in Fig. 7, and no difference could be detected in the outer region, while a light cambering in the middle blade region appeared, leading anyhow to only around 1% difference in the lift coefficient. It can be therefore concluded that for the applied inflow conditions (that are also the standard operating conditions), the usage of only a beam model for this turbine in comparison to a shell model leads to a negligible difference that does not justify the higher computational cost.

3.2 Impact of the structural model and coupling algorithm

In this section the use of beam and shell elements is compared for the turbulent inflow case in complex terrain (FMC) in Fig. 8. This has been chosen because it represents the most complex case from the aerodynamic point of view, and therefore of interest for studies about the structural impact. In these cases the entire turbine is considered as flexible.

The choice of the structural elements shows in average a difference of 3.7% of the Root Mean Square (RMS) value of the shell flapwise deformation, which is not negligible anymore in comparison to the OTM case. The difference gets much stronger in edgewise direction, where an average difference of 15% of the RMS value occurs. The higher frequency oscillations are stronger pronounced in the shell coupling, which can be lead back to the absence of coupling terms in the stiffness matrix of the beam model (bend-bend and bend-twist). On the other side a complete modelling of the geometry is done in the shell model, justifying the differences that are occurring.

The FFT of the signals over one minute are depicted in 8b and 8d. It can be seen that the first harmonic of the **R2:S15** rotational velocity (commonly known as 1P) shows clearly the strongest peak in case of the edgewise deformation, suggesting the importance of the **R2:S16** weight effect for this deformation direction. **R2:S17** On the other side, the 1P frequency does not clearly deviate from the neighboring peaks in flapwise direction, while becoming the strongest peaks only at higher frequencies. This shows that, in this case, the low frequency spectrum of the flapwise deformation is mostly influenced by the turbulent inflow and not the blade-tower passage. The spectrum amplitude in case of the shell coupling is always slightly higher than in beam coupling (especially in edgewise) although the RPM harmonics' amplitude are always close to each other. **R2:S18** This has been reconducted again to the absence of some coupling terms in the stiffness matrix of the beam model and the higher accuracy of the shell model in which the entire geometry is taken into account. Only the RPM harmonic close to the edgewise eigenfrequency of the blade shows a higher amplitude in shell than in beam coupling. This suggests that in case of particular excitation of the edgewise eigenfrequency, an aeroelastic instability could take place that the beam coupling would not recognize.

The improvement in accuracy by using an implicit coupling is now discussed. In this case the computational time increases due to the repetition of the timestep. The implicit coupling has only been considered for the FMC case with shell coupling. A total of three revolutions with a timestep equivalent to 1 azimuthal degree have been computed. In order to reach the predefined

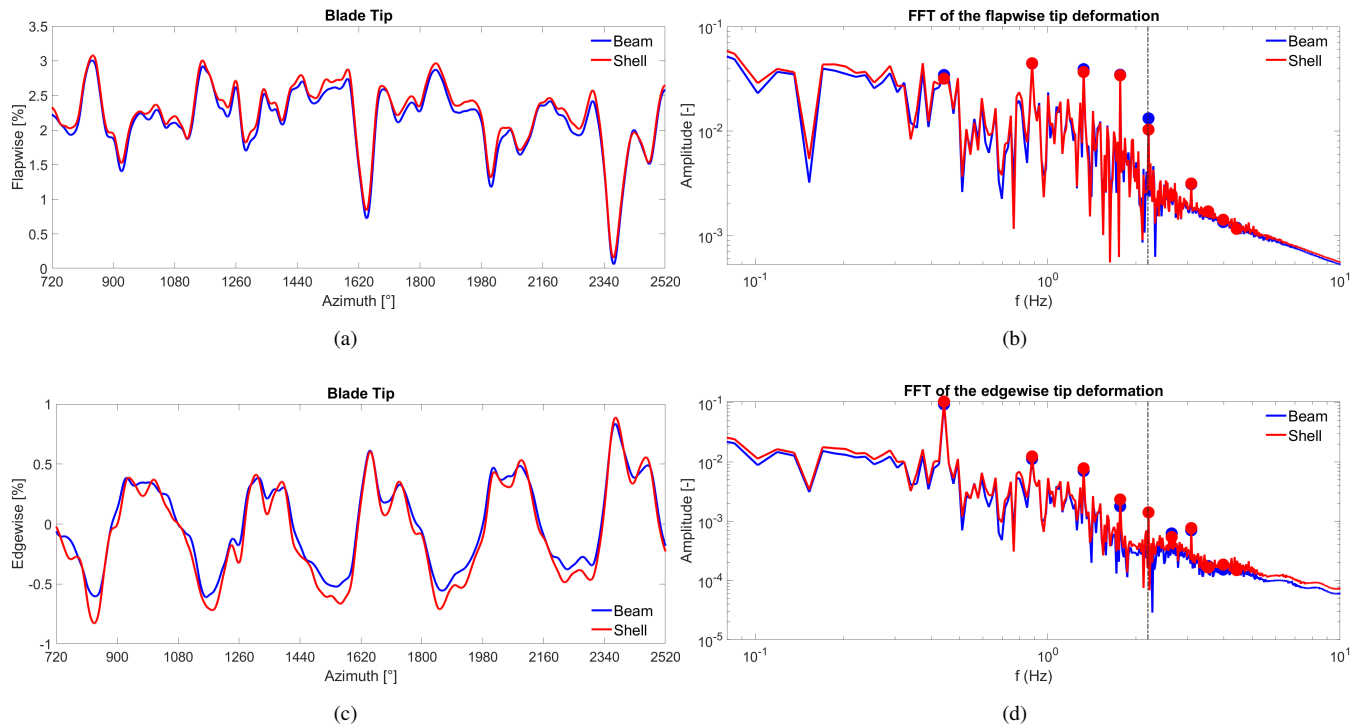


Figure 8. Flapwise (a) and edgewise (c) blade tip deformation over three revolutions, comparison of beam and shell coupling. (b) and (d) show the FFT over one minute simulation. A 1-D Moving-Averaging filter has been applied for cleanliness. Dotted vertical lines are plotted at the first flapwise and edgewise eigenfrequency of the blade, respectively.

convergence, it was necessary about 28 times per revolution to perform more coupling iterations per timestep. A FFT of the flapwise and edgewise tip deformation is depicted in Fig. 9. Almost no difference can be seen between the two algorithms in this application, and that is why all following studies have been based on an only explicit algorithm.

3.3 Aeroelastic effects on the near wake

In this section the effects of flexibility on the near wake are analyzed. For this reason wind velocity profiles have been extracted at defined radial distances from the hub center and averaged over three revolutions. The rigid and coupled simulations have been run in parallel, so that the same time series could be taken into consideration and averaged. The wind profiles have been extracted for two sections, a **R1:S25** x - z (flow direction-height) plane through the tower axis, and a x - y (flow and side direction) plane through the nacelle axis. The cases taken into consideration are FMU and FMC, comparing in both cases the rigid (red lines) to the beam-based FSI simulation (blue lines). The first has been chosen because is the uniform inflow case **R2:S19** and therefore the simplest one, the second one because closest to reality. **R2:S20** Because of the higher inflow velocity and the higher pitch in the FMC case, the induction of the rotor decreases. This can be seen in Fig. 10b, where the influence of the rotor presence on the wake shape is negligible. For both FMU and FMC the upper part of the rotor shows to be less influenced by

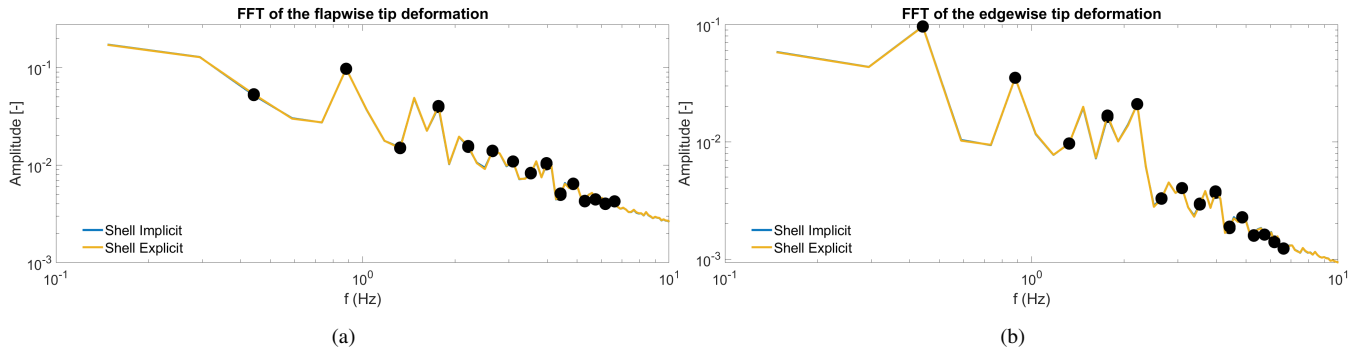


Figure 9. FFT of the flapwise and edgewise blade tip deformation using shell elements with an explicit and implicit coupling algorithm. Circle on the RPM harmonics.

flexibility, where only a small shape discrepancy can be noticed in the closest section to the rotor. On the other side, the lower part of the rotor wake mixes with the tower wake showing different profile shapes up to a distance of $2R$ in the area between 15 m to 50 m height. The tower is really stiff, and especially in this region its deformation is negligible in comparison to the blade and cannot therefore change the wake shape. This suggests that the discrepancy has to be led back to the blade-tower interaction. In FMU, where the velocity is kept constant, the blade-tower interaction has a strong impact and that is why wake profile differences can be seen up to $2R$ distances. This effect is lower in 10b because the RPM harmonic peaks of the flapwise blade deformation are not much stronger than the turbulence peaks in as seen in Sec. 3.2.

On the other side, the y - z sections in 10a and 10b are extracted at the hub height and are therefore not influenced by the tower wake. As in the upper part of the rotor in x - z planes, no influence of the wake shape can be noticed independently of the blade pitch angle. Due to the oscillating movement of the nacelle, the hub region shows small discrepancies that disappear already after $2R$ radial distances.

3.4 Difference between flat and complex terrain including flexibility

Both FMT and FMC consider the same turbulent inflow field as input at the inlet, propagating on a flat terrain and up a hill with a forest, respectively. This means also that the time needed by the flow to reach the turbine is not the same between the two cases and therefore differences between flat and complex terrain can be only extrapolated from long simulations in a statistic way. One minute simulations have been computed for all cases, as a compromise between computational time and statistic requirements. On the other side, when the effects of aeroelasticity are of interest, it is possible to compare rigid and coupled simulations timestep per timestep as long as the chosen real time series are coinciding. 11b shows the influence of the forest, leading to really low velocities especially for 40% of the tower. Here a strong cut between a low velocity and a high velocity region occurs, which is completely absent in the case of the flat terrain, which only has shear effects (in addition to turbulence). Additionally, structures of the forest with low velocity and high TI reach the lower half of the rotor as shown in 11c, with direct consequences on loads and deformations.

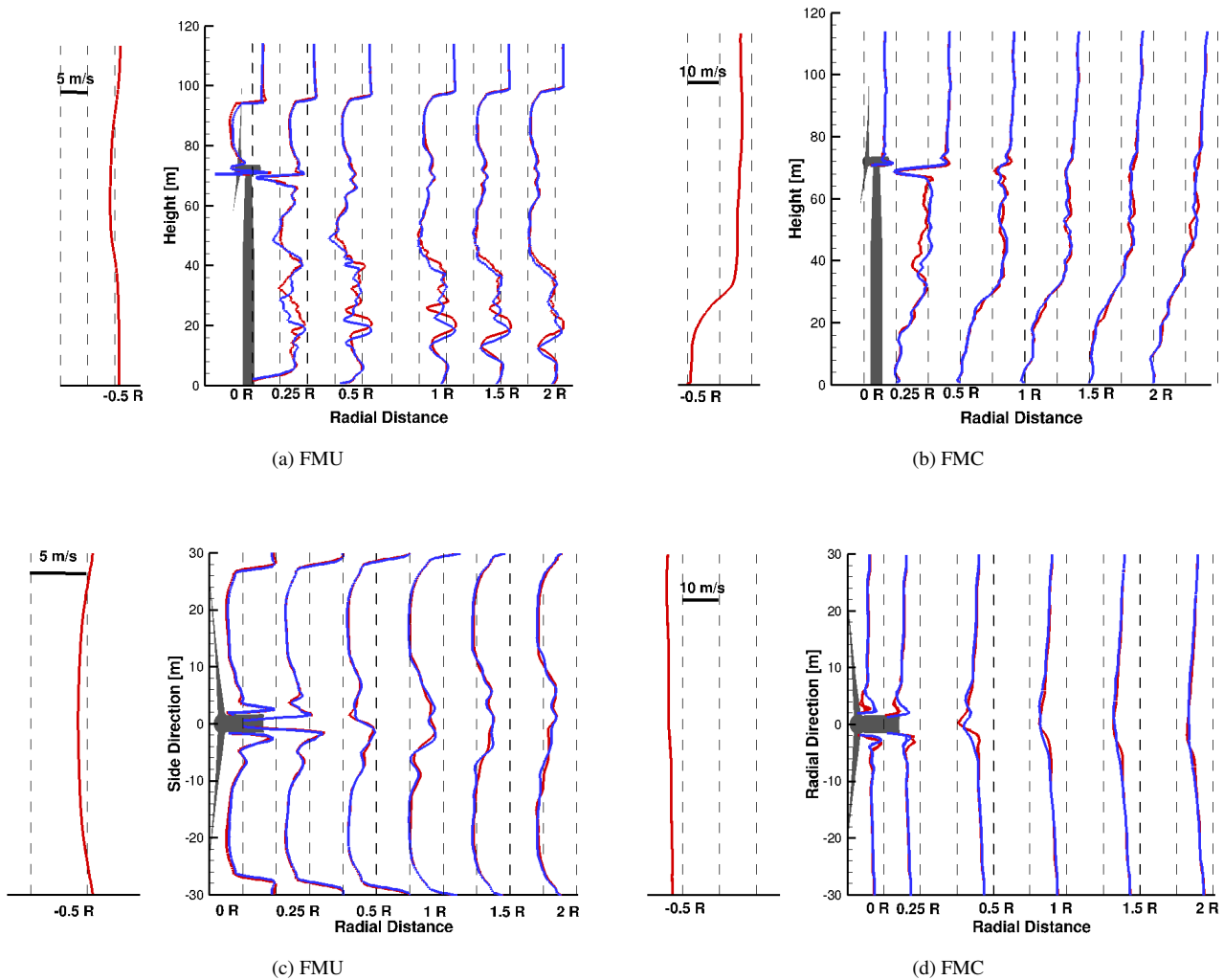


Figure 10. Profiles of the velocity component in wind direction at different axial distances from the tower center. x-z (flow direction-height) slices in (a) and (b), x-y (flow-side direction) slices in (c) and (d), including averaged inflow slice. Red lines represent the rigid case, blue lines the beam-coupled case.

The effect of the blade deformation on the blade loads is then analyzed for both FMT and FMC. As described in section 2.1.1, those two cases use turbulence with a different shear coefficient and u_∞ to ensure the same hub velocity close to the rotor. The phase averaged thrust force (F_x) calculated over 26 revolutions (about one real minute) the rigid cases is shown in Fig. 12a and 12b. 12c and 12d show the respective difference in case of shell-coupled FSI simulations. Loads are normalized according to the respective average value in rigid case. It can be seen that in flat terrain the load distribution is mostly symmetric, with lower loads during the tower passage. The tower passage effect can be seen also in the FMC case, although the load distribution

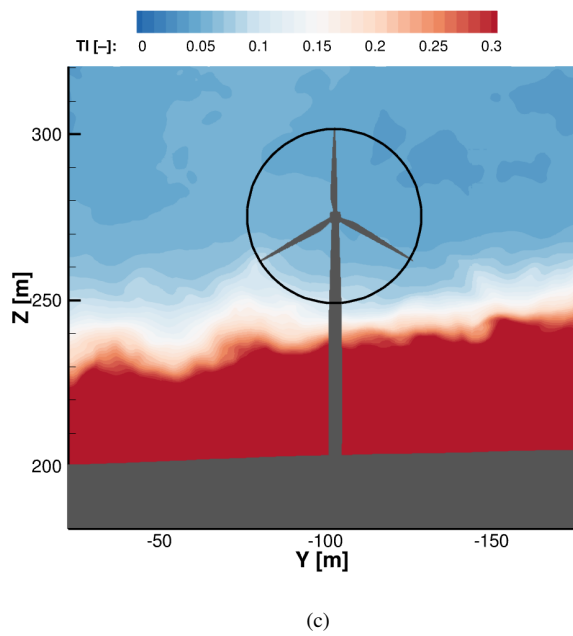
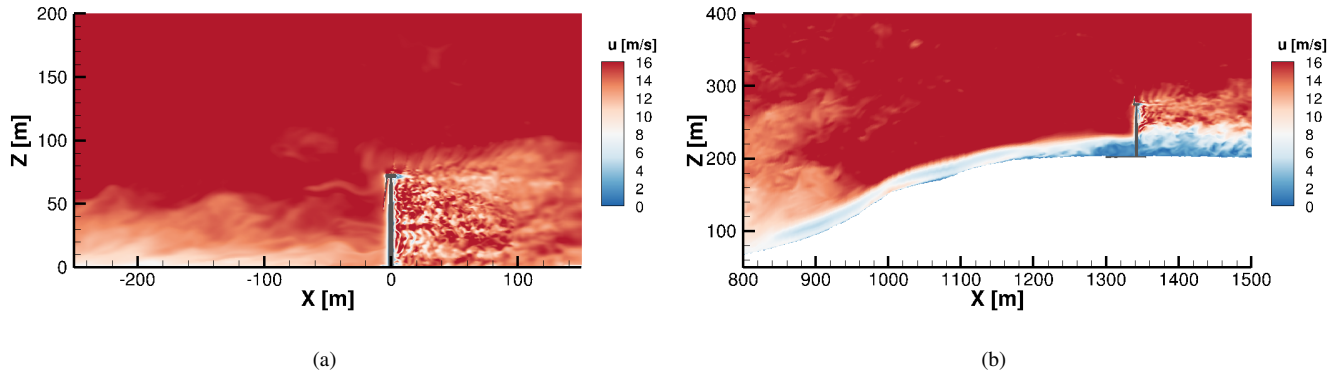
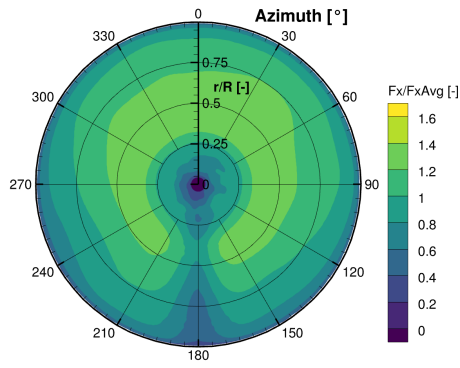
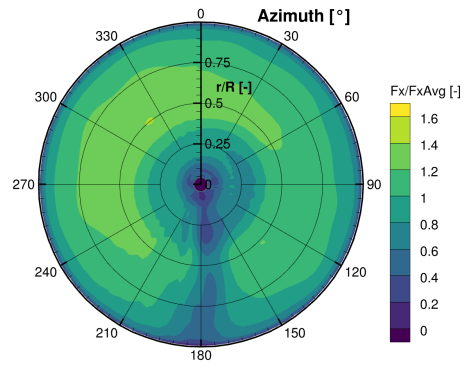


Figure 11. Vertical plane with interaction of the turbulent inflow in flat (a) and complex terrain with forest (b). Average TI over one minute in a plane 1R upstream rotor position (c).

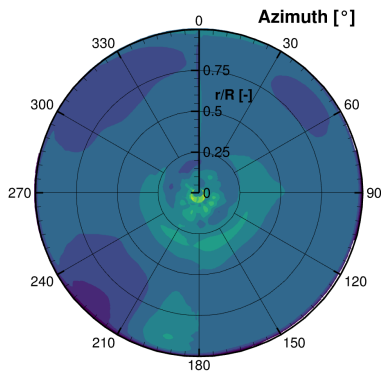
between the upper and lower side of the rotor is not symmetric anymore. This is explained by the retreating blade effect (Letzgus et al., 2021) by which the blade faces an inclined flow due to escarpment of the orography. This is in phase with the blade movement on the Left Hand Side (LHS) of the rotor, and opposite in phase in the Right Hand Side (RHS) of the rotor. This effects leads to a higher AOA on the left-hand side of the plot than on the right-hand side. This phenomenon influences also the tower region, which is not symmetrical around the 180° area anymore. When both cases are considered as flexible, in



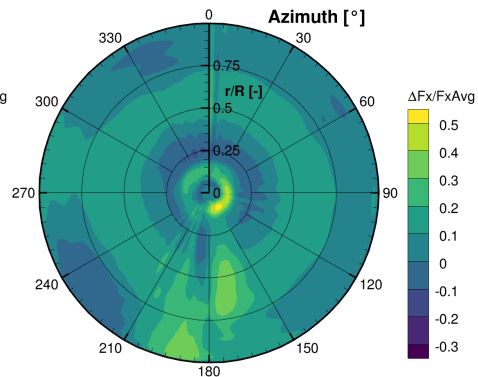
(a) F_x phase average in FMT



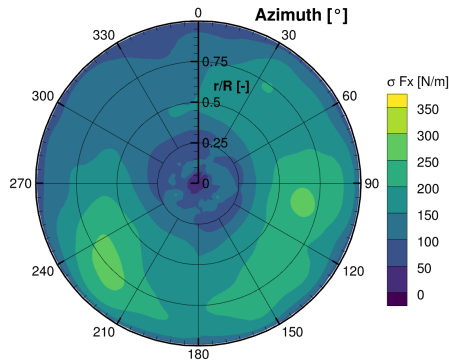
(b) F_x phase average in FMC



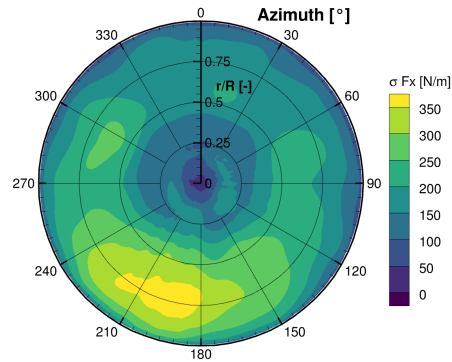
(c) Difference of F_x between rigid and flexible in FMT



(d) Difference of F_x between rigid and flexible in FMC



(e) Standard deviation of F_x in rigid for FMT



(f) Standard deviation of F_x in rigid for FMC

Figure 12. Phase average of the thrust force of one blade calculated over 26 revolutions. Loads are normalized according to the average in FMT and FMC, respectively. Difference is calculated as $(F_x \text{ flexible}) - (F_x \text{ rigid})$. Standard deviation is calculated for the rigid case.

the flat terrain the largest differences occur at the lower rotor half close to the hub and after the blade-tower passage. Directly
335 after the tower region, i.e. between 180° and 230° , the effect of the blade-tower interaction can be depicted. Due to the inertia
of the blade, the deformation's peak occurs between 20° after the effective blade-tower passage. Between 180° and 200° the
blade faces a lower deformation and moves therefore fast against the wind direction. The deformation velocity of the blade tip
reaches up to $\pm 3.5\text{m/s}$, which represents around 20% of the reference velocity at the hub, with the consequent effect on the
relative velocity faced by the blade and therefore loads. The opposite happens in the area between 210° and 240° , where the
340 blade tip displacement increases again and moves therefore in the wind direction with a lower relative velocity. The same effect
can be observed for the FMC case too (12d), with a further uniform increase of the thrust in the region between 50% and 75%
of the blade radius. Additionally from 160° it can be seen that the flexible case develops higher loads. Any connection of this
phenomenon with the blade tip deformation due to the blade-tower interaction can be excluded because occurring at least 40°
later. The standard deviation of the thrust for the rigid case is shown in Fig. 12e and 12f. Here it can be noticed that in the flat
345 case the lower rotor half shows a higher standard deviation that is due to the presence of shear, while on the other side the case
with the complex terrain shows much higher values in the area between 140° and 250° . As shown in Fig. 11c, vortex structures
from the forest have a strong influence on the lower rotor half, leading to local low velocities with high turbulence intensities.
Summing the retreating blade effect and the forest impact leads to an asymmetrical tower shadow in the rigid case (12b). On
the other side, when the blade is bending, the tower shadow impact is more pronounced, becoming again the dominant factor,
350 making the area by 180° more symmetrical again. Additionally, it needs to be considered that the blade presents a cone angle,
and therefore a bending deformation increases the rotor disk area, counterbalancing the lower velocities due to the forest wake.

3.5 Aeroelastic effects on the Damage Equivalent Loading (DEL)

The DEL is a constant load value that applied over a defined number of cycles, leads to the same damage as a time varying load.
In this way it is possible to compare different load signals, and analyze the factors that influence the fatigue on a structure. The
355 approach is based on S-N curves (stress vs number of cycles) of the material on a log-log scale and a rainflow algorithm that
recognizes peaks, valleys and therefore fatigue cycles. The formulation used in this study is the one of Hendriks and Bulder
(1995), which has been also applied in Guma et al. (2021) on the DANAERO rotor. Considering the conclusions from Sec. 3.2,
shell-based FSI simulations have been here used to generate the DEL input. In order to consistently compare the cycle counts,
26 revolutions (around one minute real time) have been taken into consideration. Two different input signals have been chosen,
360 the flapwise (M_y) and edgewise (M_x) blade root moment respectively. The first one is the also called "bending moment", while
the second represents the blade torque. Three cases are compared, FMU, FMT and FMC respectively and the results of the
DEL calculations are depicted in Fig. 13. Both signals show similar results, and that is why only the cycle count of the M_y
signals has been considered in Fig. 14. The case with uniform inflow is the one showing always the lowest damage level and
also the only one in which flexibility is slightly increasing the damage level. Looking at Fig. 14a, it can be seen that flexibility
365 is not only adding small perturbations to the signal (small cycles between 0-10 kNm) but it is also increasing the amplitude
of the large cycles (the ones generated by the blade-tower passage). The two cases with turbulence show always larger DEL
values compared to uniform inflow (FMU). This is a consequence of the much larger number of small cycles (oscillations due

to turbulence) and to the presence of a few very large cycles (up to 500 kNm). The flexibility slightly reduces the DEL values, acting as a positive effect in a similar way for both FMT and FMC. In FMT, cycles with amplitude between 60 and 90 kNm are damped leading to a higher number of smaller cycles. Similarly in FMC, where very few large cycles up to 420 kNm are damped to smaller cycles. That is why the DEL value slightly decreases, considering that the brighter the cycle, the larger is its influence on the DEL value. It can be concluded that, in case of turbulence where large cycles are detected, flexibility acts as a damper reducing them to a higher number of smaller cycles and therefore smaller fatigue values.

R1:S24 Lastly, a comparison of the DEL for the same FMC case has been performed to confront the beam and shell coupling in Fig. 15. For both inputs, the DEL using the shell model is slightly higher, because of a larger number of smaller cycles, which fits with the oscillations in the deformations shown in Sec. 3.2.

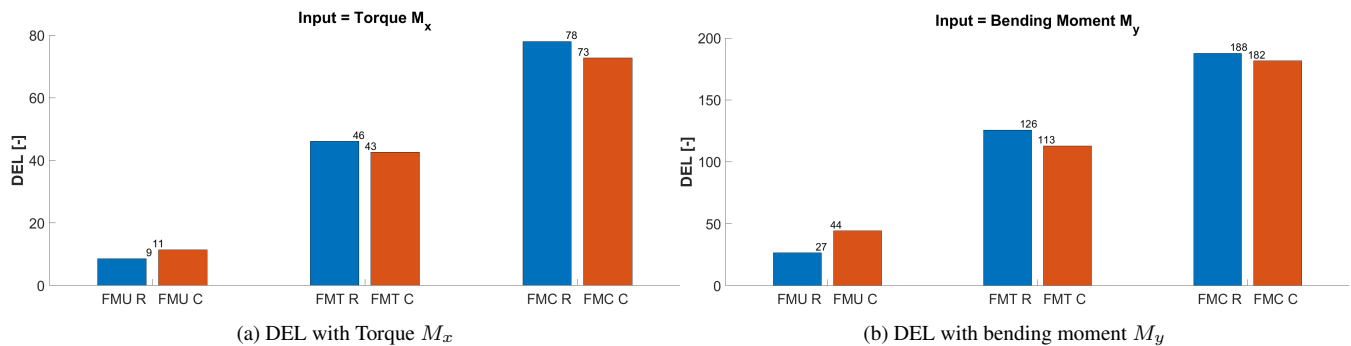


Figure 13. **R2:S21** Normalized DEL calculation comparison between rigid (blue) and coupled (red) for cases FMU, FMT and FMC.

4 Conclusions

In the present work, a high-fidelity Fluid-Structure Interaction coupling between the CFD solver FLOWer and the CSD solver Kratos has been presented. The particular features introduced in this coupling are the possibility to use both beam and shell nonlinear structural elements for the entire turbine and to use both an explicit and implicit coupling algorithm. This coupling has been used to calculate the aeroelastic response and effects of complex terrain on a small sized wind turbine with around 50 m rotor diameter and around 750 kW rated power. This turbine is going to be erected in Stöttener Berg in 2022, a complex terrain with the presence of a hill and a forest. The turbine has been therefore simulated by the use of models increasing their complexity and computational costs from both the aerodynamic, structural and coupling algorithm point of view. A one-third model of the turbine has been utilized to assess the consistency of both structural models, which shows less than 1% difference in case of uniform inflow conditions. The usage of nonlinear models avoided the nonphysical elongation of the blade typical of linear models. A shell model intrinsically considers bend-twist coupling, which is why differences in the predicted torsion occur between the two models, although negligible for such a small blade. The section's shape deformation leads also to negligible differences in the lift calculation, and therefore it has been concluded that in case of single blade calculations in uniform

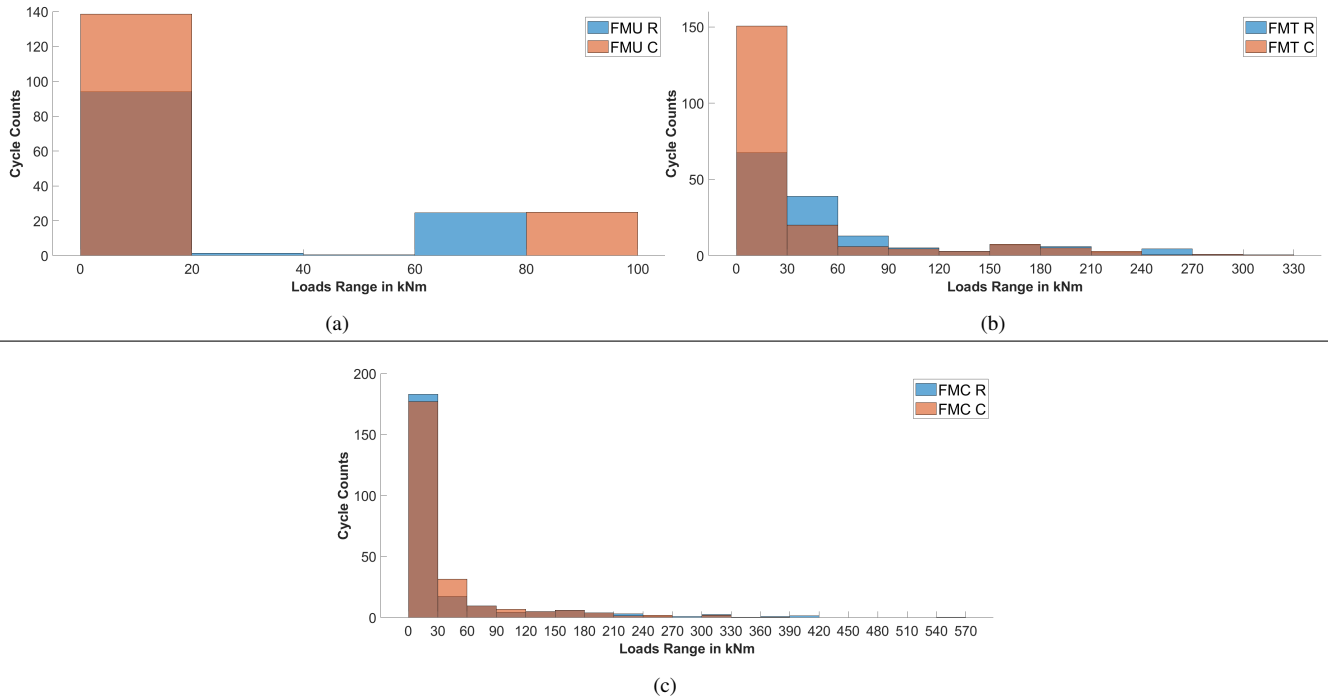


Figure 14. Cycle count using the bending moment M_y for the cases FMU, FMT and FMC, both rigid and shell-based coupled.

390 inflow conditions, a beam based coupling is sufficient for such a small turbine. When the aerodynamic complexity increases, i.e. the full turbine in complex terrain is considered, stronger differences occur by adopting either beam or shell structural elements, suggesting that more complicated cases require higher fidelity. **R1:S25** Especially in the case that a complex flow combines with aeroelastic instabilities, the usage of only a beam model, which neglects possible occurring vibrations and the section deformation, can result in misleading results. On the other side it is clear that for only a rough estimate of the loads, 395 the shell model (especially for the entire turbine), is still too expensive from the computational (and pre-processing) point of view. On the other side, the usage of an implicit coupling show no advantage at all in comparison to a much cheaper explicit one. Afterwards, the effects on the near wake by means of velocity profiles' shapes has been analyzed for both the uniform inflow case (with low blade pitch angle) and for the case with complex terrain. Cuts at the hub height show that only the hub region is affected by flexibility in both cases. On the other side, x-z cuts at the tower centre, show that flexibility only affects 400 the velocity profile region behind the tower due to blade-tower interaction blade deformation peaks. These are more evident in case of uniform inflow, while they are hidden by the turbulence frequencies in the complex terrain case, and therefore less evident. Then, the impact of the terrain on aeroelasticity has been discussed by means of phase averaged thrust over one minute simulation. The same time series have been computed for both the rigid and flexible turbine. The blade-tower passage shows here its effect changing the relative velocity between blade and flow and therefore AOA. The flat terrain showed to be mostly 405 affected by the shear while on the other side, the complex terrain is influenced by low velocity vortex structures generated by

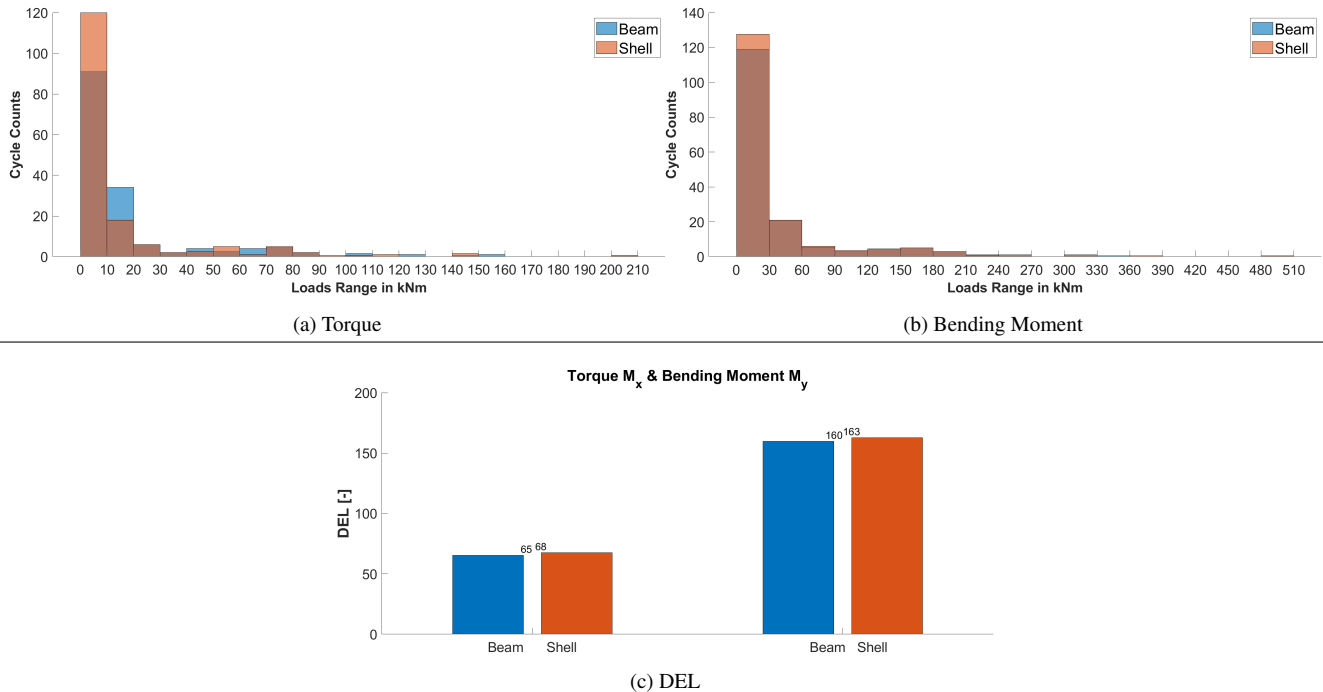


Figure 15. Cycle count using the torque (a) and bending moment (b) and resulting DEL (c). Comparison of beam and shell model by FMC.

the forest. Flexibility showed in this case its impact already directly before the tower passage, with an increase of the loads counterbalancing the lower velocities due to the forest wake.

410 Finally the effects of aeroelasticity and turbulence are analyzed by means of fatigue calculations (Damage Equivalent Loading). In the uniform inflow case flexibility leads to a higher number of small oscillations and increases the amplitude of the big cycles and therefore yields a higher DEL. On the other side, the cases with turbulence show the opposite effect. This is because in case of turbulent inflow, large cycles are detected and flexibility acts as a damper breaking them into smaller cycles and therefore smaller fatigue values.

415 **R2:G1** The possibility to make in feasible time such high fidelity calculations opens new horizons to further topics such as aeroelastic instabilities, e.g. local buckling analysis and Vortex Induced Vibrations (VIV), for which BEM-beam models still struggle to provide information. **R2:G2** Next steps of this work will be the validation of the obtained results with the field data that will be produced after the built of the two research wind turbines in ene Berg. Additionally it is foreseen to introduce a controller, which might have a strong influence on the results especially by high velocities. The way for trustful load prediction for design purposes is still steep, but it is important to take one step at a time. It is the authors' hope, that this work represents one of those steps.

420 *Data availability.* The raw data of the simulations results can be provided by contacting the corresponding author

Author contributions. GG generated the CFD model, developed in collaboration with PB the FSI coupling, run the simulations and made the post-processing. PB generated the CSD model too. PL took care of the complex terrain simulations and generation of inflow data from experimental data. TL and RW supported the research, defined and supervised the work and revised the manuscript.

Competing interests. The authors declare they have no competing interests

425 *Acknowledgements.* The authors gratefully acknowledge the founders of the project WINSENT (code number 0324129): the federal Ministry for Economic Affairs and Energy (BMWi) and the Ministry of the Environment, Climate Protection and the Energy Sector Baden Württemberg under the funding number L75 16012. Computer resources were provided by the Gauss Centre for Supercomputing and Leibniz Supercomputing Centre under grant pr94va.

References

- 430 Bangga, G., Weihing, P., Lutz, T., and Krämer, E.: Effect of computational grid on accurate prediction of a wind turbine rotor using delayed detached-eddy simulations, *Journal of Mechanical Science and Technology*, 31, 2359–2364, 2017.
- Bazilevs, Y., Hsu, M.-C., Kiendl, J., Wüchner, R., and Bletzinger, K.-U.: 3D simulation of wind turbine rotors at full scale. Part II: Fluid–structure interaction modeling with composite blades, *International Journal for Numerical Methods in Fluids*, 65, 236–253, 2011.
- Bazilevs, Y., Hsu, M.-C., and Scott, M.: Isogeometric fluid–structure interaction analysis with emphasis on non-matching discretizations, and with application to wind turbines, *Computer Methods in Applied Mechanics and Engineering*, 249, 28–41, 2012.
- 435 Bechmann, A. and Sørensen, N. N.: Hybrid RANS/LES method for wind flow over complex terrain, *Wind Energy: An International Journal for Progress and Applications in Wind Power Conversion Technology*, 13, 36–50, 2010.
- Brodeur, P. and Masson, C.: Numerical site calibration over complex terrain, *Journal of solar energy engineering*, 130, 2008.
- Bucher, P., Guma, G., Wüchner, R., Lutz, T., and Bletzinger, K.-U.: High-fidelity aeroelastic analysis of wind turbines in complex terrain: FSI and structural modelling.
- 440 Dadvand, P., Rossi, R., and Oñate, E.: An Object-oriented Environment for Developing Finite Element Codes for Multi-disciplinary Applications, *Archives of Computational Methods in Engineering*, 17, 253–297, <https://doi.org/10.1007/s11831-010-9045-2>, 2010.
- Dose, B., Rahimi, H., Herráez, I., Stoevesandt, B., and Peinke, J.: Fluid-structure coupled computations of the NREL 5 MW wind turbine by means of CFD, *Renewable energy*, 129, 591–605, 2018.
- 445 Drela, M.: XFOIL: An analysis and design system for low Reynolds number airfoils, in: *Low Reynolds number aerodynamics*, pp. 1–12, Springer, 1989.
- Fedorov, V.: Bend-twist coupling effects in wind turbine blades, DTU Wind Energy, Denmark, 2012.
- Fernando, H., Mann, J., Palma, J., Lundquist, J. K., Barthelmie, R. J., Belo-Pereira, M., Brown, W., Chow, F., Gerz, T., Hocut, C., et al.: The Perdigao: Peering into microscale details of mountain winds, *Bulletin of the American Meteorological Society*, 100, 799–819, 2019.
- 450 Grinderslev, C., Sørensen, N. N., Horcas, S. G., Troldborg, N., and Zahle, F.: Wind turbines in atmospheric flow: fluid–structure interaction simulations with hybrid turbulence modeling, *Wind Energy Science*, 6, 627–643, 2021.
- Guma, G., Bangga, G., Jost, E., Lutz, T., and Krämer, E.: Consistent 3D CFD and BEM simulations of a research turbine considering rotational augmentation, in: *Journal of Physics: Conference Series*, vol. 1037, p. 022024, IOP Publishing, 2018.
- Guma, G., Bangga, G., Lutz, T., and Krämer, E.: Aeroelastic analysis of wind turbines under turbulent inflow conditions, *Wind Energy Science*, 6, 93–110, 2021.
- 455 Heinz, J. C., Sørensen, N. N., and Zahle, F.: Partitioned fluid-structure interaction for full rotor computations using CFD, PhD thesis, Technical University of Denmark, 2013.
- Heinz, J. C., Sørensen, N. N., and Zahle, F.: Fluid–structure interaction computations for geometrically resolved rotor simulations using CFD, *Wind Energy*, 19, 2205–2221, 2016a.
- 460 Heinz, J. C., Sørensen, N. N., Zahle, F., and Skrzypiński, W.: Vortex-induced vibrations on a modern wind turbine blade, *Wind Energy*, 19, 2041–2051, 2016b.
- Hendriks, H. and Bulder, B.: *Fatigue Equivalent Load Cycle Method*, 1995.
- Horcas, S., Barlas, T., Zahle, F., and Sørensen, N.: Vortex induced vibrations of wind turbine blades: Influence of the tip geometry, *Physics of Fluids*, 32, 065 104, 2020.
- 465 IEA: Projected Costs of Generating Electricity, <https://www.iea.org/reports/projected-costs-of-generating-electricity-2020>.

- IRENA: Renewable Energy Statistics 2020, <https://www.irena.org/publications/2020/Jul/Renewable-energy-statistics-2020>.
- Jameson, A., Schmidt, W., and Turkel, E.: Numerical solution of the Euler equations by finite volume methods using Runge Kutta time stepping schemes, in: 14th fluid and plasma dynamics conference, p. 1259, 1981.
- 470 Klein, L., Gude, J., Wenz, F., Lutz, T., and Krämer, E.: Advanced computational fluid dynamics (CFD)–multi-body simulation (MBS) coupling to assess low-frequency emissions from wind turbines, *Wind Energy Science*, 3, 713–728, 2018.
- Kowarsch, U., Oehrle, C., Hollands, M., Keßler, M., and Krämer, E.: Computation of helicopter phenomena using a higher order method, in: *High Performance Computing in Science and Engineering '13*, pp. 423–438, Springer, 2013.
- Larsen, T. J. and Hansen, A. M.: How 2 HAWC2, the user's manual, target, 2, 2007.
- 475 Letzgs, P., El Bahlouli, A., Leukauf, D., Hofsäb, M., Lutz, T., and Krämer, E.: Microscale CFD Simulations of a Wind Energy Test Site in the Swabian Alps with Mesoscale Based Inflow Data, in: *The Science of Making Torque from Wind (TORQUE) 2020*, 28 September - 2 October 2020, online, vol. 1618 of *Journal of Physics: Conference Series*, pp. Art.–Nr.: 062 021, IOP Publishing, <https://doi.org/10.1088/1742-6596/1618/6/062021>, 2020.
- Letzgs, P., Guma, G., and Lutz, T.: CFD Studies on Wind Turbine Interactions with the Turbulent Local Flow Field Influenced by Complex Topography and Thermal Stratification, *Wind Energy Science Discussions*, 2021, 1–33, <https://doi.org/10.5194/wes-2021-88>, 2021.
- 480 Li, Y., Castro, A., Martin, J., Sinokrot, T., Prescott, W., and Carrica, P.: Coupled computational fluid dynamics/multibody dynamics method for wind turbine aero-servo-elastic simulation including drivetrain dynamics, *Renewable Energy*, 101, 1037–1051, 2017.
- Mann, J.: The spatial structure of neutral atmospheric surface-layer turbulence, *Journal of fluid mechanics*, 273, 141–168, 1994.
- Meister, K.: Numerische Untersuchung zum aerodynamischen und aeroelastischen Verhalten einer Windenergieanlage bei turbulenter atmosphärischer Zuströmung, Dissertation, Universität Stuttgart, Stuttgart, 2015.
- 485 Menter, F. R.: Zonal two equation k-turbulence models for aerodynamic flows, AIAA paper, 2906, 1993, 1993.
- Michelsen: Basis3D - A Platform for Development of Multiblock PDE Solvers finite volume method for predicting flows at all speeds, Tech. rep., Technical University of Denmark, 1992.
- Raddatz, J.: The block-structured RANS solver FLOWer, 2009.
- Santo, G., Peeters, M., Van Paeppegem, W., and Degroote, J.: Effect of rotor–tower interaction, tilt angle, and yaw misalignment on the 490 aeroelasticity of a large horizontal axis wind turbine with composite blades, *Wind Energy*, 23, 1578–1595, 2020a.
- Santo, G., Peeters, M., Van Paeppegem, W., and Degroote, J.: Fluid–Structure Interaction Simulations of a Wind Gust Impacting on the Blades of a Large Horizontal Axis Wind Turbine, *Energies*, 13, 509, 2020b.
- Sayed, M., Lutz, T., Krämer, E., Shayegan, S., Ghantasala, A., Wüchner, R., and Bletzinger, K.-U.: High fidelity CFD-CSD aeroelastic analysis of slender bladed horizontal-axis wind turbine, in: *Journal of Physics: Conference Series*, vol. 753, p. 042009, IOP Publishing, 495 2016.
- Schulz, C., Hofsäb, M., Anger, J., Rautenberg, A., Lutz, T., Cheng, P. W., and Bange, J.: Comparison of Different Measurement Techniques and a CFD Simulation in Complex Terrain, *Journal of Physics: Conference Series*, 753, 082 017, <https://doi.org/10.1088/1742-6596/753/8/082017>, 2016.
- Schäffler, N.: Numerical studies and grid convergence analysis of the WINSSENT wind turbine rotor, Studienarbeit, 2019.
- 500 Sørensen, N.: General purpose flow solver applied to flow over hills Ph. D, Ph.D. thesis, thesis Technical University of Denmark, 1995.
- Streiner, S., Hauptmann, S., Kühn, M., and Krämer, E.: Coupled fluid-structure simulations of a wind turbine rotor, in: *Deutsche Windenergie-Konferenz (DEWEK)*, Bremen, Germany, DEWI-German Wind Energy Institute, 2008.
- Testfield, W.: WINSSENT - WindForS Testfield, <https://www.windfors.de/de/projekte/testfeld/winsent/>.

- Wang, T.: Development of Co-Simulation Environment and Mapping Algorithms, Dissertation, Technical University of Munich, 2016.
- 505 Weihing, P., Letzgus, J., Bangga, G., Lutz, T., and Krämer, E.: Progress in Hybrid RANS-LES Modelling, 2018.
- WindForS: WINSENT Project, https://www.zsw-bw.de/fileadmin/user_upload/pr17-2016-ZSW-Windtestfeld.pdf, 2016.
- Yu, D. O. and Kwon, O. J.: Predicting wind turbine blade loads and aeroelastic response using a coupled CFD–CSD method, *Renewable Energy*, 70, 184–196, 2014.