

A new base of wind turbine noise measurement data and its application for a systematic validation of sound propagation models

Susanne Könecke^{1,i}, Jasmin Hörmeyer², Tobias Bohne¹, and Raimund Rolfes¹

¹Leibniz University Hannover, Institute of Structural Analysis, Appelstraße 9A, 30167 Hannover, Germany

²SoundPLAN GmbH, Etwiesenberg 15, 71522 Backnang, Germany

ⁱPrevious research was published under the name Susanne Martens

Correspondence: Susanne Könecke (s.koenecke@isd.uni-hannover.de)

Abstract. Extensive measurements in the area of wind turbines were performed in order to validate a sound propagation model which is based on the Crank-Nicolson Parabolic Equations method. The measurements were carried out over a flat grass-covered landscape and under various environmental conditions. During the measurements, meteorological and wind turbine performance data were acquired and acoustical data sets were recorded in distances of 178, 535, and 845 m to the wind turbine. By processing and analysing the measurement data, validation cases and input parameters for the sound propagation model were derived. The validation includes five groups that are characterized by different sound propagation directions, i.e., downwind, crosswind and upwind conditions in varying strength. **In strong upwind situations, the sound pressure levels at larger distances are overestimated because turbulence is not considered in the modelling.** In the other directions, the model reproduces well the measured sound propagation losses in the overall sound pressure level and in the third octave band spectra. As in the recorded measurements, frequency-dependent maxima and minima are identified and losses generally increase with increasing distance and frequency. The agreement between measured and modelled sound propagation losses decreases with distance. The data sets used in the validation are freely accessible for further research.

1 Introduction

From 2009 to 2020, the global capacity of onshore wind turbines has increased from 157 to 707 GW. A further growth of 399 GW is expected in the years 2021 to 2025 (Lee and Zhao, 2021). With the expansion of wind energy and the decreased distance between turbines and local residents, the noise emission from wind turbines and its propagation has come into focus. This paper addresses the latter issue - the sound propagation of wind turbines.

Various analytical and numerical modelling techniques have been applied to predict the **outdoor noise propagation** (Bérenghier et al., 2003). The most well known physically based sound propagation models are the ray tracing and the parabolic equations (PE) method. With a focus on low-level sources, most of the models are verified using the benchmark of Attenborough et al. (1995) and are partially validated with measured data. Performing and evaluating acoustic measurements requires a lot of effort and cost, especially for high-level sources such as wind turbines. As a result, numerical models for high-level sources have often been verified by analytical results (e.g. Lee et al. (2016); Cotté (2019)) or engineering models (e.g. Bolin and Boué (2009); Kaliski and Wilson (2011)) in the past, but are less validated by measured data.

25 In addition to analytical solutions, Lee et al. (2016) compared numerical results with far-field acoustic measurements to validate the PE method. For this, two loudspeakers were placed at 20 and 80 m height of a meteorological mast and seven microphones were positioned at 2 m height and in 500 to 1700 m distance from the mast. Single tone frequencies (125, 250, 500, and 1000 Hz) were used as sources. In downwind direction, a good agreement between measurements and model was observed for both speaker heights. Since no turbulence was taken into account in the model, the sound level in upwind direction
30 was strongly underestimated by the PE method.

Shen et al. (2020) carried out measurements with a loudspeaker including the detection of fluid and acoustic quantities to validate four different propagation models, namely the PE-based WindSTAR (Barlas et al., 2017a) and the ray-tracing based Nord2000 (Plovsing, 2014), as well as the ISO 9613-2 (1996) and DK-BEK513 (2019) standards. The loudspeaker was placed at a height of 109 m, the atmospheric conditions were recorded by a meteorological mast and acoustic measurements
35 were performed with 11 microphones placed at different distances to the turbine. White noise and band-limited white noise were applied as signals. For two different wind shears, the measured and modelled 1/3 octave spectra (125 to 1000 Hz) were compared and the average difference of the overall sound pressure level was determined. Depending on the microphone position and propagation model, the difference of measured and modelled data were between -3.43 and 2.45 dB. The comparison was performed for one wind direction.

40 In Prospathopoulos and Voutsinas (2005), a sound propagation model based on ray-tracing was validated by acoustic measurements in the area of one wind turbine. For this purpose, the sound pressure level was recorded somewhere between 70 and 88 m and in 530 m distance to the turbine. Validating the model, the measured and modelled propagation losses between the 70/88 and 530 m were compared in 1/3 octave bands. Using one scenario as an example, i. e. for downwind conditions and flat land, a good agreement was shown. However, as the focus of the paper was the investigation of different propagation
45 effects, no further validation cases were presented. Moreover, with a hub height of 60 m, the investigated wind turbine does not correspond to the current scales, which are typically between 80 and 120 m.

As part of the project 'Noise and energy optimisation of wind farms', extensive measurements were carried out to validate the Nord2000 propagation model for the use of wind turbine noise (Søndergaard and Plovsing, 2009). This ray-tracing based model was validated by several field measurements with different sources - namely with two loudspeakers, a single wind
50 turbine and a whole wind farm. Data from a 100m meteorological mast were used to determine sound speed profiles. In general, good agreements were obtained for simple and also complex conditions regarding meteorology and landscape. For the loudspeaker test in flat terrain, distances of up to 1500 m were considered. Showing an average deviation of 0.1 dB and a standard deviation of 0.7 dB, very good results were achieved in downwind direction. With an average deviation of 4.3 dB and a standard deviation of 1.9 dB, higher differences of measured and modelled data were examined in upwind direction. Herein,
55 the predicted propagation losses were 4 dB lower than the measured ones. Note that turbulence constants were taken into account in the model. For the validation with a single wind turbine, only downwind conditions were considered. The results show differences between -3.8 and 1.3 dB which corresponds to an average deviation of -1.0 dB with a standard deviation of 2.3 dB. Moreover, the measured and predicted 1/3 octave spectra differ to some extent.

As Shen et al. (2020), Nyborg et al. (2022) uses the sound propagation models ISO 9613-2 (1996), Nord2000 (Plovsing, 2014) and WindSTAR (Barlas et al., 2017a). The models are validated with two data sets derived from loudspeaker and wind turbine measurements. Hereby, measured and modelled 1/3 octave spectra are compared for three cases with different propagation directions (down-, cross- and upwind). The modelled values agree well with the loudspeaker measurements. With increasing frequency, the deviations from the measured values become larger. In comparison with the measured data at a wind turbine, Nord2000 and WindSTAR show good results in cross- and upwind. In downwind, less good agreements are obtained. In the paper of Nyborg et al. (2022), the modelling of the wind turbine as a sound source is also addressed. This will be included in the discussion (see Sec. 4.1).

For various reasons, the data provided by the literature are not suitable for validating sound propagation models applied to wind turbines. Firstly, loudspeakers do not reflect the spatial and time-dependent sound characteristics of a wind turbine. Second, although atmospheric conditions are often measured, the specific measured values are not available to the reader. Consequently, some of the input parameters for a sound propagation model cannot be derived and the findings cannot be used to validate further models. In order to validate and to improve sound propagation models for wind turbines, open-source measurement data is helpful. For this purpose, a detailed presentation, processing and analysis of the acoustic and meteorological measurement data as well as a subsequent data publication is necessary. For this reason, the objectives of this paper are

- (1) to introduce comprehensive measurements of acoustic and atmospheric quantities close to a real Multi-MW-turbine
- (2) to prepare, combine and analyse acoustic, atmospheric and wind turbine measurement data for the validation of sound propagation models
- (3) to apply prepared data-sets for the systematic validation of a numerical sound propagation model based on the PE method taking into account different propagation directions
- (4) to provide validation data of wind turbine sound propagation for further research purposes.

The paper is structured as follows. In Sec. 2, the methodology is described in detail. The measurements, the PE-based sound propagation model applied and the modelling of a representative sound source of a wind turbine are presented. The focus of the section is in particular on the derivation of input parameters from measurement data for the model. All results are given in Sec. 3. The acoustic and atmospheric measurement data are analysed and the measurement- and model-based propagation losses are compared using 1/3 octave bands and total sound pressure levels. Moreover, the validity of model prediction is addressed. In Sec. 4, the results are discussed considering the source model, the impact of ground properties and measurement aspects.

2 Methodology

In this section, an overview of the modelling approach is given first. Then the focus is on the measurements, they are presented in detail and the derivation of input parameters is discussed extensively. Finally, the validation process is described.

90 2.1 Modelling

In this work, extensive wind turbine noise measurement data are used to validate a propagation model with a simplified wind turbine sound source. In general, the sound propagation is essentially determined by the geometric attenuation. In addition, sound propagation is influenced by the ground and by atmospheric aspects such as air absorption, refraction and scattering. According to Salomons (2001), the sound pressure level L_p at the place of immission can be calculated as a function of the

95 frequency f :

$$L_p^n(f) = L_W^n(f) - \underbrace{10 \cdot \log 4\pi(R^n)^2 - \alpha_L(f) \cdot R^n + \Delta L(f)^n}_{\text{Attenuation terms}}, \quad (1)$$

with the sound power level L_W of the source n , the distance to the source R^n , the atmospheric air coefficient α_L and the term ΔL , which describes additional attenuation due to further propagation effects. In this work, the subscript n is also added referring to the point source number. In Eq. 1 attenuation terms are subtracted from the sound power level. The attenuation

100 terms include the geometrical spreading (first term) and air absorption (second term) which are both dependent on the distance to the source R^n . Furthermore, the air absorption depends also on the atmospheric coefficient α_L which is calculated as a function of frequency, temperature and humidity according to Bass et al. (1995). The last attenuation term ΔL describes the sound propagation loss due to ground effects as well as atmospheric refraction and scattering. In this work, ΔL is determined using the Crank-Nicolson Parabolic-Equation (CNPE) method.

105 The CNPE method is an efficient methodology for the calculation of sound propagation over large distances, because backscattering is neglected and the calculations are only performed in the propagation direction (Salomons, 2001). As a result, it is a common approach for predicting the propagation of wind turbine noise (Lee et al., 2016; Barlas et al., 2017a, b; Zhu et al., 2018; Cotté, 2019). The propagation model of this work follows the descriptions in West et al. (1992) and in Salomons (2001) and is shortly introduced in the following. Therefore, the CNPE method is simplified into a two-dimensional form on

110 the basis of an axisymmetric approximation. The two-dimensional Helmholtz equation is given as

$$\frac{\partial^2 q}{\partial r^2} + \frac{\partial^2 q}{\partial z^2} + k_{\text{eff}}^2 \cdot q = 0 \quad (2)$$

where the sound field q is dependent on the cylindrical coordinates r and z and is associated with the complex pressure amplitude p by $q = p\sqrt{r}$. Moreover, the local effective wavenumber $k_{\text{eff}} = \omega/c_{\text{eff}}$ with the angular frequency ω and the effective sound speed c_{eff} is considered in Eq. 2. Calculating the sound pressure field q , a wide-angle parabolic equation is solved

115 using the Crank-Nicolson method in r-direction and central finite differences in z-direction. In the simulations of this work, a discretization equal to one-tenth of the wavelength λ is chosen in both vertical and horizontal direction (i.e. $\Delta r = \Delta z = \lambda/10$) providing sufficient accuracy. To simulate free field conditions in z-direction, a perfectly matched layer is used at the upper boundary of the computational domain. The lower boundary is defined by the acoustic ground impedance. For the characterization of those ground impedances, the Delany-Bazley-Miki model (Miki, 1990) is used accounting for specific

120 ground properties. This model is based on an empirical ground model by Delany and Bazley (1970). Since the site of the measurements was predominantly grass-covered, a flow resistance of 200 kPa·s/m² is chosen for the Delany-Bazley-Miki

model. This, according to various publications, is a typical value for grassland. Moreover, in view of the measurements a flat terrain is assumed.

The present CNPE model uses a second-order starting field described in Salomons (2001) by

$$125 \quad q_0 = \sqrt{ik_a}(A_0 + A_2k_a^2z^2)\exp\left(-\frac{k_a^2z^2}{B}\right) \quad (3)$$

with $A_0 = 1.3717$, $A_2 = -0.3701$ and $B = 3$. The starting field represents a monopole sound source.

130 However, to represent a wind turbine as a source, the approach from Barlas et al. (2017b) is adopted. In this approach the wind turbine is reduced to three point sound sources, which are located at the rotor blade tips, more precisely at 85% of the rotor length, in the three-dimensional field. According to Oerlemans et al. (2007), the sound radiation of wind turbines is dominant at this position. Transferred to a two-dimensional field, the point sound sources are located at hub height h and at $\pm 85\%$ of the rotor length l :

$$h_s = h \pm 0.85l. \quad (4)$$

135 For this simplified representation of a wind turbine, one simulation is performed for each sound source (Barlas et al., 2017b). In the context of this work, the simulation results are subsequently logarithmically summed. As in Nyborg et al. (2022), it is assumed that the point sources are incoherent. Moreover, the sound power level is assumed to be equally distributed among all sources. In this way, the sound power level of the source n is given by

$$L_W^n = L_W/i, \quad (5)$$

140 where i is the total amount of sources. As a result of the assumptions, the term of the sound source is cancelled when calculating the sound propagation losses. However, in reality, not all point sources have the same strength and, in general, the sound propagation loss is only defined for one point source. The method used allows the propagation loss to be adjusted for several point sources and is discussed in Sec. 4.1.

2.2 Measurements

The data sets selected for the validation originate from one of five measurement campaigns, which are described in detail in Martens et al. (2020). In this work, only a very brief overview is given in order to provide the reader a rough understanding of the measurements. The measurement data used originates from a measurement campaign performed close to a turbine in a wind farm in northern Germany. The landscape of the measurement site is characterized as flat and homogeneous and is predominantly covered with grass. Acoustic and meteorological data as well as turbine-specific parameters of the wind farm, i.e. Supervisory Control And Data Acquisition (SCADA) Data, were recorded synchronously over a period of several months.

150 The measurement environment as well as the position of the measurement instruments and turbines are shown in Fig. 1. As can be recognized, several wind turbines are located in the area of the acoustic measurements. It is to point out that the investigations of this work refer to a single turbine. For validation, only periods are selected where the specific turbine under investigation is on while the surrounding turbines are off.

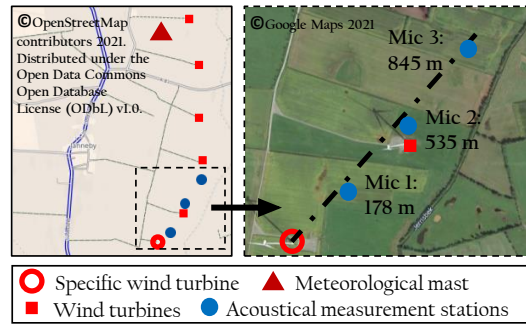


Figure 1. Overview map of the wind farm and detailed measurement plan including the position of specific wind turbine, acoustical measurement stations and meteorological mast

During the campaign, three acoustic measurement stations recorded sound pressure levels, 1/3 octave bands, and audio at a sampling rate of 51 kHz. The distances from the wind turbine to the acoustic stations are summarized in Tab. 1. To avoid
 155 additional extraneous noise from natural sources, the acoustic measurement devices were positioned at least 10 m from possible disturbances. A challenging task for acoustic measurements in the free field is the reduction of wind-induced noise at the microphone. These noises can strongly distort measurement data, especially in the low-frequency range. Using a combination of a nose cone, a 90 mm standard windscreen and an in-house developed 220 mm secondary windscreen, the wind-induced noise at the microphones was effectively reduced during the measurements. The development and further investigations concerning
 160 the in-house developed windscreens are described in Martens et al. (2019). An example of an acoustic measurement station with windscreens is shown in Fig. 2. Generally, the height of each sound level meter was 1.70 m. Moreover, the systems were powered by solar panels and an additional external battery during the time of measurements.

Synchronously to the acoustic recordings, extensive meteorological measurements were performed describing the lower atmosphere. A 100 m high measuring mast is permanently positioned in the wind farm, which records temperature and humidity
 165 as well as wind speed and wind direction at different heights. These data are available averaged over 10 minutes. The data of wind speed is also available in 1 Hz, which is important for the determination of the sound speed profile. The corresponding measurement setup is illustrated in Fig. 2 as well as the position of the measurement mast is given in Fig. 1. According to this, the meteorological mast is located in the centre of the wind farm. In addition to acoustic and meteorological parameters, the operational data of all wind turbines in the wind farm were detected, such as rotor speed and electrical power. Herein, the data
 170 is provided at a resolution of ten minutes.

Table 1. Horizontal distances from wind turbine to acoustic measurement stations

Microphone	Distance to wind turbine
Mic 1	178 m
Mic 2	535 m
Mic 3	845 m

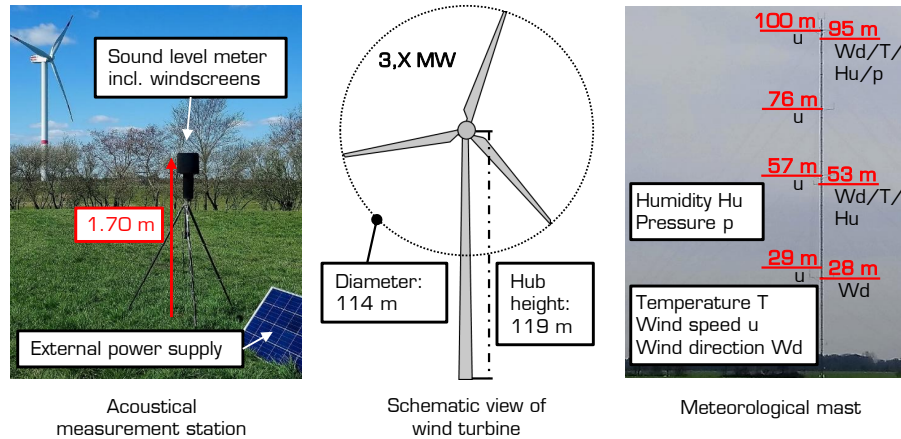


Figure 2. Overview of measurements systems and wind turbine

2.3 Determination of input parameters

As mentioned above, sound propagation in the atmosphere is influenced by air absorption, turbulence and atmospheric refraction. The parameters for estimating the air absorption are derived directly from the measurements. Temperature and humidity at 53 m are used to calculate the atmospheric coefficient α_L and, hence, the air absorption using the approach of Bass et al. (1995).

Regarding the atmospheric refraction, the vertical profile of the sound speed is essential. Generally, the sound speed c is calculated by

$$c_0 = \sqrt{\kappa RT_0} = 20.05 \sqrt{T_0}, \quad (6)$$

with the specific heat capacity κ set to 1.4 and the gas constant R of dry air to $287 \text{ Jkg}^{-1}\text{K}^{-1}$.

180 In the moving atmosphere, the speed of sound is superimposed with the prevailing wind speed, which results in the effective sound speed

$$c_{\text{eff}} = c_0 + u_{\text{comp}}. \quad (7)$$

Here, the second term describes the wind component in sound propagation direction, which is determined using the wind speed u and the angle γ between the wind direction and the sound propagation direction:

$$185 \quad u_{\text{comp}} = -|u| \cdot \cos(\gamma). \quad (8)$$

Consequently, the direction of sound propagation corresponds to the angular relationship between the turbine and the microphones. Note that the sound propagation direction is defined opposite to the wind direction. The wind direction is the compass direction from which the wind comes. The sound propagation direction is the compass direction in which the sound propagates.

Eqns. 6 and 7 are used to calculate the effective sound speed c_{eff} at the measurement heights illustrated in Fig. 2, i.e. at 29, 57, 76 and 100 m. On the basis of the measured data, it was verified that the wind direction does not change significantly with height (see Sec. 4.3).

However, a high discretization of the c_{eff} -profile is required for the CNPE method. To determine c_{eff} from the ground to the maximum height of the computational domain, the log-linear approach introduced in Heimann and Salomons (2004) is followed. Accordingly, at the height z , c_{eff} can be described as a function of the coefficients a_0 , a_{\log} and a_{lin} and the roughness length z_0 using

$$195 \quad c_{\text{eff}} = a_0 + a_{\log} \ln \frac{z + z_0}{z_0} + a_{\text{lin}} z. \quad (9)$$

A value of 0.05 m is chosen as the roughness length, which is considered to be representative for the site according to available turbine reports. The coefficient a_0 corresponds to the speed of sound and is calculated via Eq. 6 using the measured temperature at a height of 53 m. The logarithmic and linear coefficients a_{\log} and a_{lin} are determined using a pseudo inverse (see Golan (1995) for foundations). The accuracy of the fitted vertical profile of c_{eff} is given by the Root Mean Square Error (RMSE) values. A comparison between the original value of c_{eff} at sensor heights and the estimated vertical profile of the sound speed is shown in Sec. 3.1.

Lately, information on atmospheric stability is needed to classify different propagation conditions and thus to derive diverse validation cases. In this work, the stability conditions are described on the basis of the dimensionless wind shear exponent α . For each ten minutes averaging period, α is determined by the power law expression:

$$205 \quad \frac{u_{z_2}}{u_{z_1}} = \left(\frac{z_2}{z_1} \right)^\alpha, \quad (10)$$

where the mean horizontal wind speeds u in m/s at the heights z_1 and z_2 are applied. Calculating α , the measured wind speed at $z_1 = 29$ m and $z_2 = 100$ m are used. Subsequently, the stability is divided into the five classes which are specified in many publications, e.g. van den Berg (2008), and are listed in the Tab. 2.

210 2.4 Validation procedure

The scheme for validating the sound propagation model with the measurement data is shown in Fig. 3. The procedure is divided into five steps.

Table 2. Criteria for stability classes in dependence of the wind shear exponent α according to van den Berg (2008)

stability class	wind shear exponent α
(moderately–very) stable	$\alpha > 0.4$
slightly stable	$0.2 < \alpha < 0.4$
neutral	$0.1 < \alpha < 0.2$
(very–slightly) Unstable	$\alpha < 0.1$

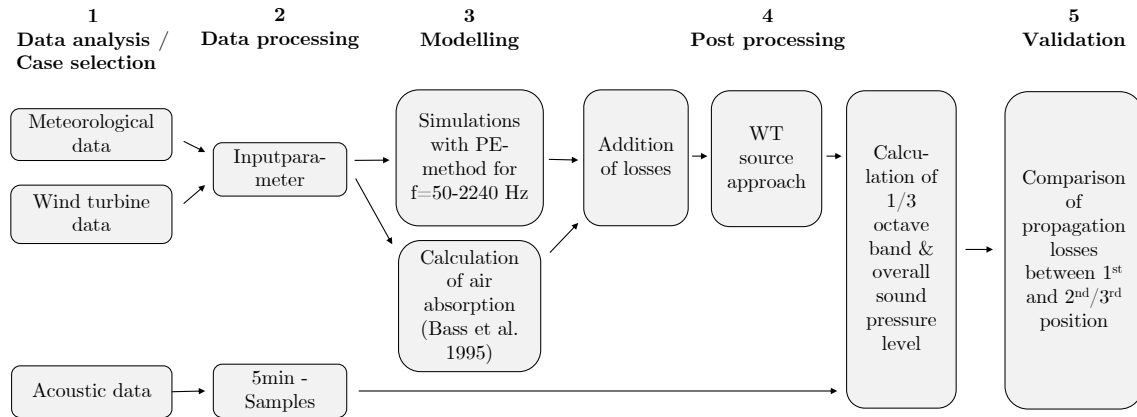


Figure 3. Scheme for validating a sound propagation model with wind turbine noise measurement data

In the first step, the validation cases are selected based on a data analysis. When selecting the validation cases, it was guaranteed, that homogeneous atmospheric conditions are present. For this purpose, the approach described in Argyle and Watson (2014) was adopted. Accordingly, the atmospheric data sets used were compared with data sets recorded within 20 minutes before and after. The atmosphere was classified as inhomogeneous if in this period of 50 minutes the wind speed varied by more than 20%, wind direction by 15° or temperature by 0.5°C. In addition to that approach, it is assumed that no particular atmospheric phenomena prevailed during the recording of the selected data sets. For example, it was ensured that no low-level jets were present. Thus, the measured wind speed increases steadily with height and no local wind maxima are shown in the vertical profile. **This analyse is based on the measurements between altitudes of 27 and 100 m. Hence, low-level jets located above 100 m cannot be noted.** Besides homogeneous conditions, it was ensured that the data did not deviate from the power curve of the turbine and that the noise of the wind turbine was dominant.

In the second step of the validation, the measured data is processed. Based on the meteorological and wind turbine data the input parameters for the sound propagation model are derived. Hub height and rotor length of the wind turbine are considered for the representation of the source. Moreover, the receiver height in the model is set equal to the microphone height during the measurements. Consequently, the same relative receiver positions to the wind turbine are examined in measurements and

simulations. In addition to the measurement geometry and the wind turbine related parameters, the calculated profile of the effective sound speed, which occurred during the measurement time, is implemented (see Sec. 2.1). Acoustic data samples of five minutes are processed for the comparison of modelled data. In order to guarantee a high level of wind turbine noise, the acoustic data sets were analysed and checked by listening tests (see Sec. 3.1).

In the third step, simulations are performed for 1/3 octave bands with centre frequencies (f_i) from 80 to 2000 Hz. Higher 1/3 octave bands have been neglected because of the typical emission spectra of wind turbines and especially because of the atmospheric absorption. Due to measurement inaccuracies caused by wind-induced noise at the microphone, bands lower than 80 Hz are also excluded. Within the 1/3 octave bands, a sampling rate of $\Delta f=5$ Hz is chosen for the simulations, which proved to give sufficient accuracy. The simulations with the PE method are performed for point sound sources at three wind turbine related heights, i.e. at hub height h and at $\pm 85\%$ of the rotor length l . In addition, the air absorption is calculated for the same frequency range.

In the post processing of the modelled data (step 4), the sound pressure level per frequency is calculated according to Eq. 1. Moreover, the wind turbine source approach is applied to the calculated relative sound pressure level. Between lower and upper limit frequencies of the 1/3 octave bands, the modelled results at the receiver location m are summed logarithmically:

$$L_{p,i}(f) = 10 \cdot \log_{10} \left(10^{\frac{L_{p,1}}{10}} + 10^{\frac{L_{p,2}}{10}} + \dots + 10^{\frac{L_{p,n}}{10}} \right) \quad (11)$$

where $L_{p,i}(f)$ is the calculated relative sound pressure level with the band number i . For the same frequency range, the measured data is also processed to 1/3 octave bands averaged over five minutes with dominant wind turbine noise. Besides 1/3 octave bands, the overall sound pressure level between 80 to 2000 Hz is determined analogously for measured and modelled data.

In the last step, a comparison of measured and simulated results is performed. Since the sound source cannot be accurately reproduced in either the simulation or the measurements, the first receiver is used as a reference to calculate the propagation loss in both cases. In this way, additional error impacts due to inaccurate representation of the wind turbine can be reduced. The propagation loss is therefore estimated between the first microphone and other microphone positions by

$$\Delta L_p = L_{p,1} - L_{p,m}, \quad (12)$$

where $L_{p,m}$ is the relative sound pressure level at the receiver position m . Hence, $L_{p,1}$ is the relative sound pressure level at the first microphone position.

3 Results

For the comparison of measured and simulated data, different validation cases were derived. In all cases, the wind turbine is characterized by a hub height of 119 m and a rotor diameter of 114 m. The receiver positions are at a height of 1.70 m and at distances of 178, 535 and 845 m to the turbine. The selected validation cases are summarized in Tab. 3 and are grouped in terms of the propagation direction. They are grouped into light downwind (case 1, 2), cross/downwind (case 3, 4), cross/upwind (case

Table 3. Overview of validation cases

Case	Duration		Temperature at 53 m	Humidity at 53 m	Propagation- direction	Stability of atmosphere
	Date	Hour				
1	15.04.2020	23:40 - 23:45	5.6 °C	77%	light downwind	slightly stable
2	15.04.2020	22:30 - 22:33	6 °C	72%	light downwind	slightly stable
3	06.04.2020	01:02 - 01:06	8.9 °C	53%	cross/downwind	moderately stable
4	06.04.2020	00:51 - 00:56	9 °C	53%	cross/downwind	moderately stable
5	05.04.2020	20:03 - 20:08	12 °C	48%	cross/upwind	slightly stable
6	05.04.2020	18:43 - 18:48	13.1 °C	47%	cross/upwind	slightly stable
7	31.05.2020	20:40 - 20:45	14 °C	57%	light upwind	very stable
8	31.05.2020	21:20 - 21:25	13.8 °C	58%	light upwind	very stable
9	14.06.2020	21:04 - 21:09	14.6 °C	75%	strong upwind	moderately stable
10	14.06.2020	21:10 - 21:15	14.5 °C	77%	strong upwind	moderately stable

5, 6), light upwind (case 7, 8) and strong upwind (case 9, 10). In the figures of the paper, the different groups are colour-coded in red (downwind, case 1) through orange and green to blue (upwind, case 10). Each group contains two validation cases that have very similar propagation characteristics. The data acquisition within a group took place in the same night and within 2 hours.

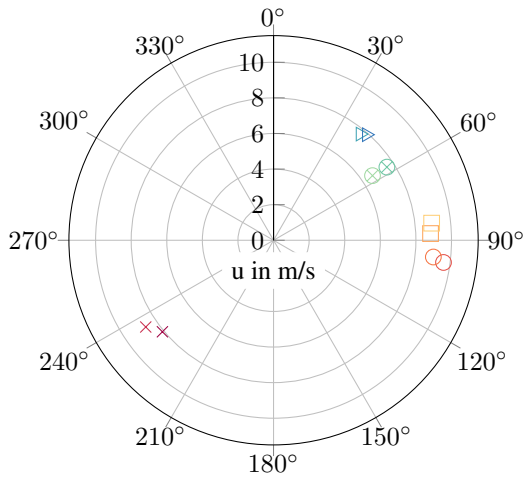
In this section the different validation cases are first analysed in terms of environmental conditions and acoustic properties. Subsequently, the validation is performed by comparing measured and modelled propagation losses per 1/3 octave band and overall sound pressure levels. Afterwards, the validation results are discussed regarding model assumptions and the effect of input parameters.

3.1 Analysis of measured data

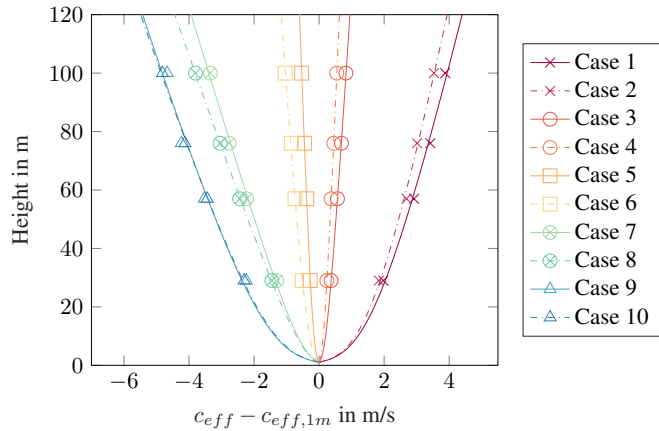
3.1.1 Environmental conditions

Since wind direction and wind speed are key determinants of the sound speed profile, these parameters are particularly important for sound propagation and are described using Fig. 4. The measured wind speed and wind direction at 100 respective 95 m at the time of validation cases are shown in Fig. 4(a). In Fig. 4(b), the calculated profiles and the measured values of the effective sound speed are also given. The different groups of propagation direction are clearly seen. The cases of each group provide similar characteristics regarding wind direction, wind speed and effective sound speed profile. Since the data was recorded within the same 30 minutes, the cases in strong upwind direction show almost the same effective sound speed profile.

The accuracy of the calculated sound speed profiles is assessed by the Root Mean Square Error (RMSE). This value indicates the average deviation of the profile from the measured values. The RMSE values were calculated for the fitting of sound speeds



(a) Distribution of measured wind speed and wind direction at 100 respective 95 m height



(b) Derived profiles of effective sound speed (lines) based on measured data at four heights (markers), normalized with the effective sound speed at 1 m

Figure 4. Wind rose and effective sound speed profiles at times of the validation cases. The wind directions are related to the microphone positions, so that a direction of 0° indicates upwind conditions whereas a direction of 180° represents downwind conditions. For both graphs the legend at the right side is used.

over all cases. The averaged RMSE value of all cases is 0.04 m/s, so that in general a very good fitting of the sound speed profile is concluded. This assessment is based on a comparison with literature values, where values of about 0.15 m/s are described as sufficiently accurate (Heimann and Salomons, 2004). The worst fit is seen for case 9 with a RMSE of 0.14 m/s.

280 The best fit is achieved for case 4 with RMSE=0.0017 m/s.

The profile of the effective sound speed generally displays the different atmospheric stabilities. However, a better measure for the stability is the wind shear exponent which, calculated according to Eq. 10, is listed for all cases in Tab. 4. With an exponent of over 0.6, cases are assigned to a very stable atmosphere, while the values between 0.2 and 0.4 belong to a slightly stable atmosphere. The cases of each group have very similar values for the exponent. In general, no validation cases are presented for neutral and unstable atmospheres, which would show wind shear exponents below 0.2. This is related to the fact, that measuring at unstable situations provides lower signal-to-noise ratios. Stable atmospheres are predominantly developed at night, where extraneous and ambient noise is low compared to the daytime activities. Moreover, in comparison to an unstable atmosphere, the wind speed on the ground is low which reduces the wind-induced noise. This refers to wind-induced noise at the microphone and to natural wind-induced noises such as leaf rustling. Consequently, the signal-to-noise ratio is greater with

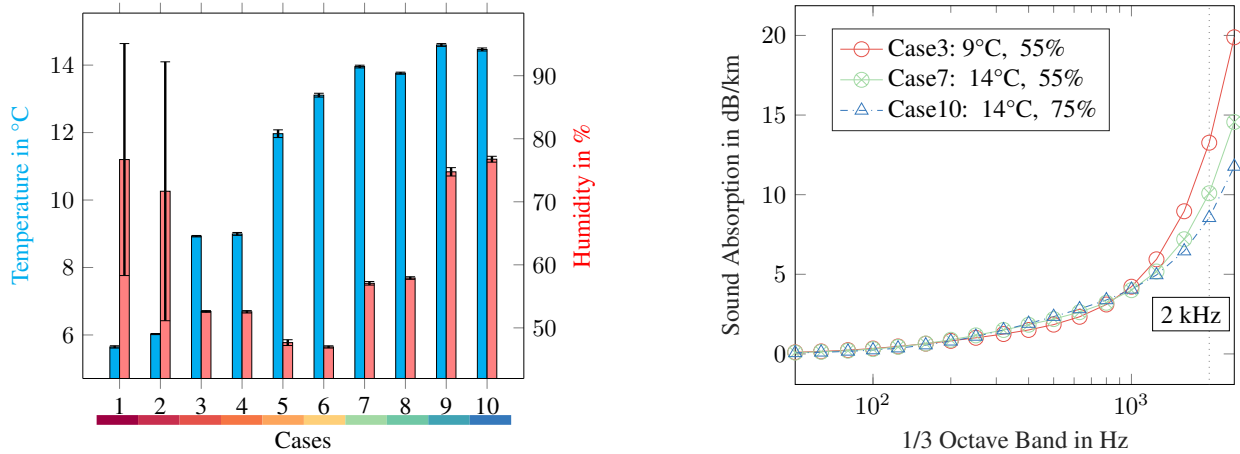
285

290 stable stratification and thus the quality of the measurement data is higher than with unstable or neutral stratification.

The atmospheric values of temperature and relative humidity significantly determine the air absorption, whereas they have a subordinate effect on the sound speed profiles. The averaged values as well as the standard deviation over 10 minutes are visualized for temperature and relative humidity in Fig. 5(a). As before, the pairs have similar values. With about 1 C°

Table 4. Calculated wind shear exponent at time of the validation cases.

Case	1	2	3	4	5	6	7	8	9	10
Wind shear exponent α	0.36	0.35	0.47	0.48	0.38	0.39	0.59	0.61	0.40	0.41



(a) Measured values and standard deviation of 10 minute data for temperature and relative humidity at 53m (b) Calculated sound absorption for selected cases having similar values of temperature respective relative humidity

Figure 5. Parameters describing the atmospheric air absorption for the validation cases.

difference, cases 5 and 6 have the largest temperature discrepancy. Humidity differs the most between cases 1 and 2 amounting to 10%. In both cases, the high standard deviations of the humidity values of up to 45% are remarkable. A high standard deviation of the humidity might indicate frequent rainfall, so that in these cases explicit attention must be paid to the quality of the measurement data. Lastly, the calculated values of the atmospheric air coefficient α_L (dB/km) for the mid frequencies of the 1/3 octave bands are visualized in Fig. 5(b) for three selected cases. As expected, the coefficient and thus the sound absorption increases with increasing frequency and decreases with increasing temperature and humidity. Case 3 is characterized by low values of humidity and temperature and has a sound absorption of 13 dB/km at 2000 Hz. As a result of higher humidity and temperature, case 10 has a lower sound absorption of 9 dB/km at the same frequency.

3.1.2 Acoustic data

The signal-to-noise ratio (SNR) is of particular importance for the quality of the acoustic data. It represents the difference between the desired sound and background noise, i.e. in the present case the difference between the noise of the wind turbine and extraneous noise. In general, the latter includes all types of background noise, such as noise from traffic or animals, which have a significant influence on the measurements. In order to select validation cases without these significant extraneous noises, frequency-dependent selections and listening tests were performed. Frequency-dependent selection is a common methodology

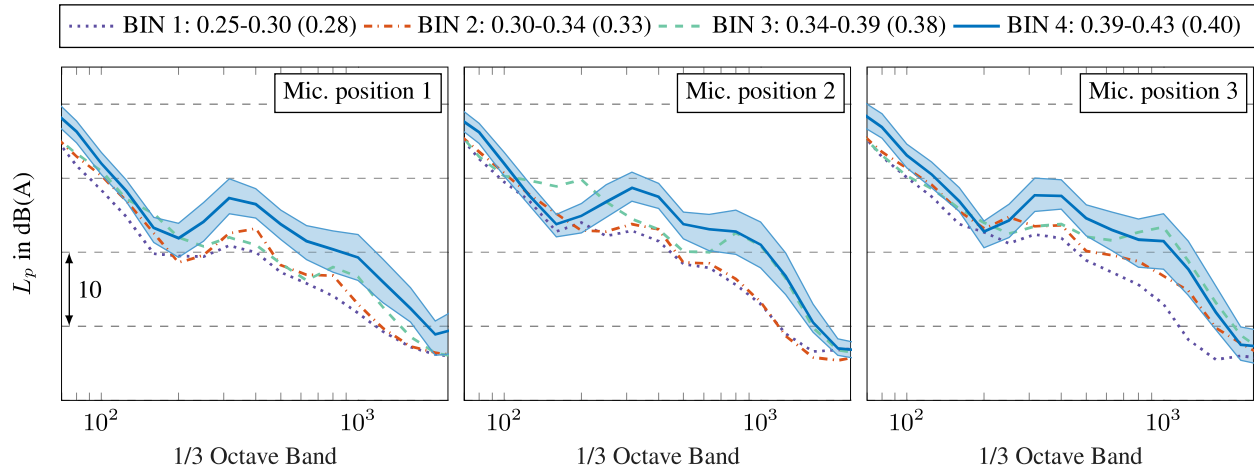


Figure 6. Measured background noise per 1/3 octave bands for different wind speed bins at three microphone positions. The wind speeds were recorded at a height of 100 m and are divided into bins of 1 m/s. The bins are normalized to the cut-off wind speed of the turbine. The average normalized wind speed during the background noise measurements is given in parentheses. The measured sound levels in the bins are energetic averages over the corresponding measurement period. Representative for all bins, the standard deviation of the measurements is given for BIN 4, which includes the data at the highest wind speed during the background measurements.

in which the frequency spectrum of the wind turbine is compared with spectra including extraneous noise (van den Berg, 2004; Larsson and Öhlund, 2014; Conrady et al., 2018; Martens et al., 2020).

310 In order to assess the background noise, recordings were conducted at the beginning of the measurement campaign during wind turbine shut down. Here, the background noise was measured with the same measurement set-up at comparable wind conditions. The measured background noise is considered to be representative for the background noise that occurred during the measurement of the validation cases. It should be mentioned that the wind turbine operations (on/off) were regulated by the power production management system. This means that the authors did not control the operational conditions of the

315 wind turbines - neither for the turbine under investigation nor for the surrounding turbines (see Fig. 1). In times of high energy production within the whole energy system, however, the management system deliberately shuts down turbines so that recordings of background noise are possible even at operating wind speeds. Following the measurements of background noise, the authors benefited from the fact that the wind farm is also a test site. Even if surrounding turbines were switched off by the management system, the turbine under investigation continued to operate in test mode. As a result, measurements for the

320 individual turbine were possible.

In Fig. 6 the measured background noise per 1/3 octave bands is shown for different wind speeds at the three microphone positions. A similar tendency is noticeable at all microphones. With increasing wind speed, the background noise increases. This trend is already known from the literature and is due to the wind-induced noises that depend on the wind speeds. High extraneous noise in the low frequency range is due to wind-induced noise at the microphone, which cannot be completely

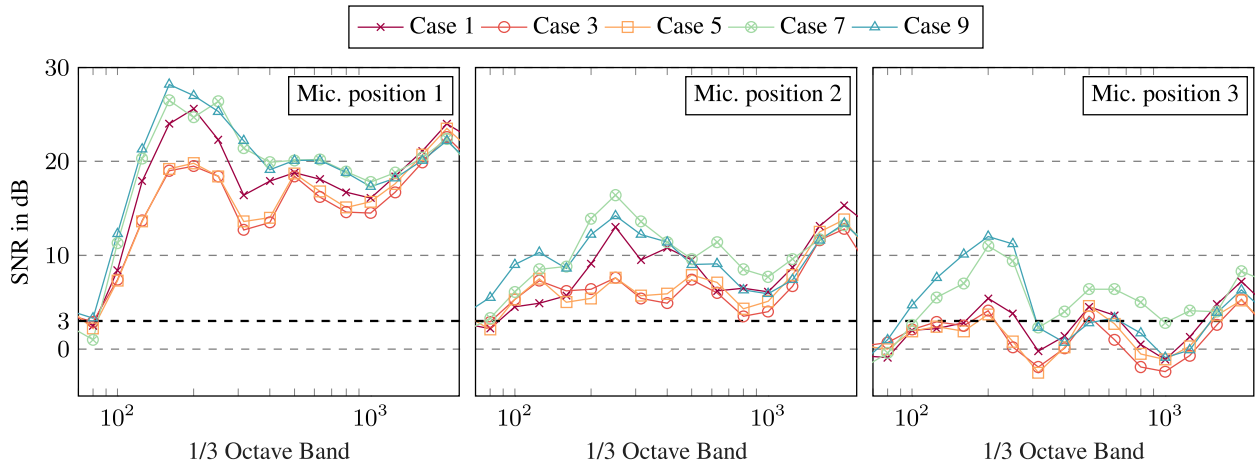


Figure 7. Signal-to-noise ratio per 1/3 octave bands for selected cases at three microphone positions. The background noise at BIN 4 is used for the determination.

325 eliminated even with effective windscreens. In Fig. 6, a local peak at approx. 300 Hz is also observed. This is assumed to be
 wind-induced vegetation noise, such as the rustling of grasses. The peak at 1000 Hz is due to a combination of vegetation
 noise and the A-weighting of the sound level. In general, the standard deviation of the background measurements is higher
 than for the wind turbine noise. As seen in Fig. 6, the highest value is at the local level maxima with approx. 2.5 dB. Wind-
 induced sounds from vegetation are known to vary greatly. Consequently, it is assumed that this variation is responsible for the
 330 comparatively high standard deviations. Since the recordings were conducted before the measurement campaign, it should be
 noted that the background noise can change in the course of the measurement campaign depending on the vegetation. Due to
 prevailing wind conditions and the management system, no measurements of background noise could be taken at the end of
 the measurement campaign.

After all, in Fig. 7 the calculated SNR is shown per 1/3 octave band at the three microphones for five selected cases, i.e. one
 335 case per group. To consider the most critical condition, the background noise at BIN 4 is used for the determination of SNR.
 In the guideline IEC 61400-12 (2012), three quality levels are stated. An SNR of more than 8 dB is very good and between 3
 and 8 dB is sufficient. If the difference is less than 3 dB, it is recommended not to use the measurements.

In general, the SNR decreases with increasing distance, which is due to the quieter wind turbine noise. While a sufficient
 SNR is usually achieved at Mic. 1 and Mic. 2, the SNR at the third microphone is critical. Here, especially the values for
 340 crosswind conditions are below 3 dB and are partly in the negative range. Moreover, Mic. 1 indicates that especially very
 low frequencies below 100 Hz are also classified as critical. Wind-induced noise at the microphone is considered in these
 low frequency ranges. In addition, compared to other cases, a low SNR is calculated with the cases in crosswind condition at
 the first microphone position. This tendency is also observed at positions 2 and 3. The comparatively low SNR in crosswind
 condition is due to the source characteristics of the turbine. Because of the dipole characteristic of the trailing edge noise, a

345 wind turbine radiates less sound in crosswind direction. Consequently, the difference to the background noise is lower in this direction.

Especially at Mic. 3 in a distance of 845 m to the wind turbine, the SNR is critical. However, to extend the database those data is also used for the validation. By carefully listening to the recordings of the validation cases, a negligible influence of the background noise on the useful signal is ensured. It should be stated that the highest wind speed bin (BIN 4) was chosen
350 in the analysis of SNR - even though some of the validation cases were recorded at lower wind speeds. That means the worst scenario was investigated. In addition, only two measurements over a period of 5 minutes were available for BIN 4. It can be expected that the wind turbine noise is dominant at the third microphone for all cases.

3.2 Validation

The measurement data is used to validate the sound propagation model presented in Sec. 2.1. The measured and modelled sound
355 propagation losses between the first and the second, respectively the third microphone position, are compared using 1/3 octave bands and overall sound pressure levels. [For assessing the accuracy and for quantifying the validity of the model prediction, the mean difference between measured and modelled propagation loss over frequencies is introduced.](#) The modelled propagation losses include all attenuation terms introduced in Sec. 2.1, i.e. attenuation due to geometric scattering, air absorption, and other aspects such as ground effects and atmospheric refraction.

360 3.2.1 Comparison of 1/3 octave band

The comparison of measured and modelled sound propagation losses per 1/3 octave band is shown using Fig. 8 and 9. For a better overview, the standard deviations of the measured data are only given for one case of each group. In addition to the sound propagation losses, the corresponding profiles of effective sound speed are given. Since cases 5/6 show similar results as cases 3/4 and provide no new findings, their results are given in the appendix. In the following, the differences within the
365 groups are presented first. Subsequently, cases 1 to 8 (Fig. 8) are discussed in detail. The cases with strong upwind (Fig. 9) are presented at the end.

In general, the difference within the groups is very small. In groups of similar propagation conditions, very similar sound propagation losses are measured or modelled. For example, the averaged difference in the measured values of case 1 and 2 (group 1) is between Mic 1 and Mic 2 only 0.28 dB. The averaged difference of the modelled data is 0.24 dB. Consequently,
370 it is assumed that the accuracy within the measurements and the modelling is sufficient.

For cases 1 to 8, the measured and modelled sound propagation losses between the first and second microphone positions agree well. In all cases, the propagation losses are at similar levels. Moreover, the peak of the losses is reproduced in the modelling. In both the measurements and the modelling, maximum sound propagation losses are obtained at frequencies of 160 and 630 Hz. This is due to ground reflections and the subsequent interference. In all cases, the measured and modelled
375 losses increase significantly with higher frequency at greater distances, e.g. between the first and third microphone. This is caused by the frequency-dependent air absorption.

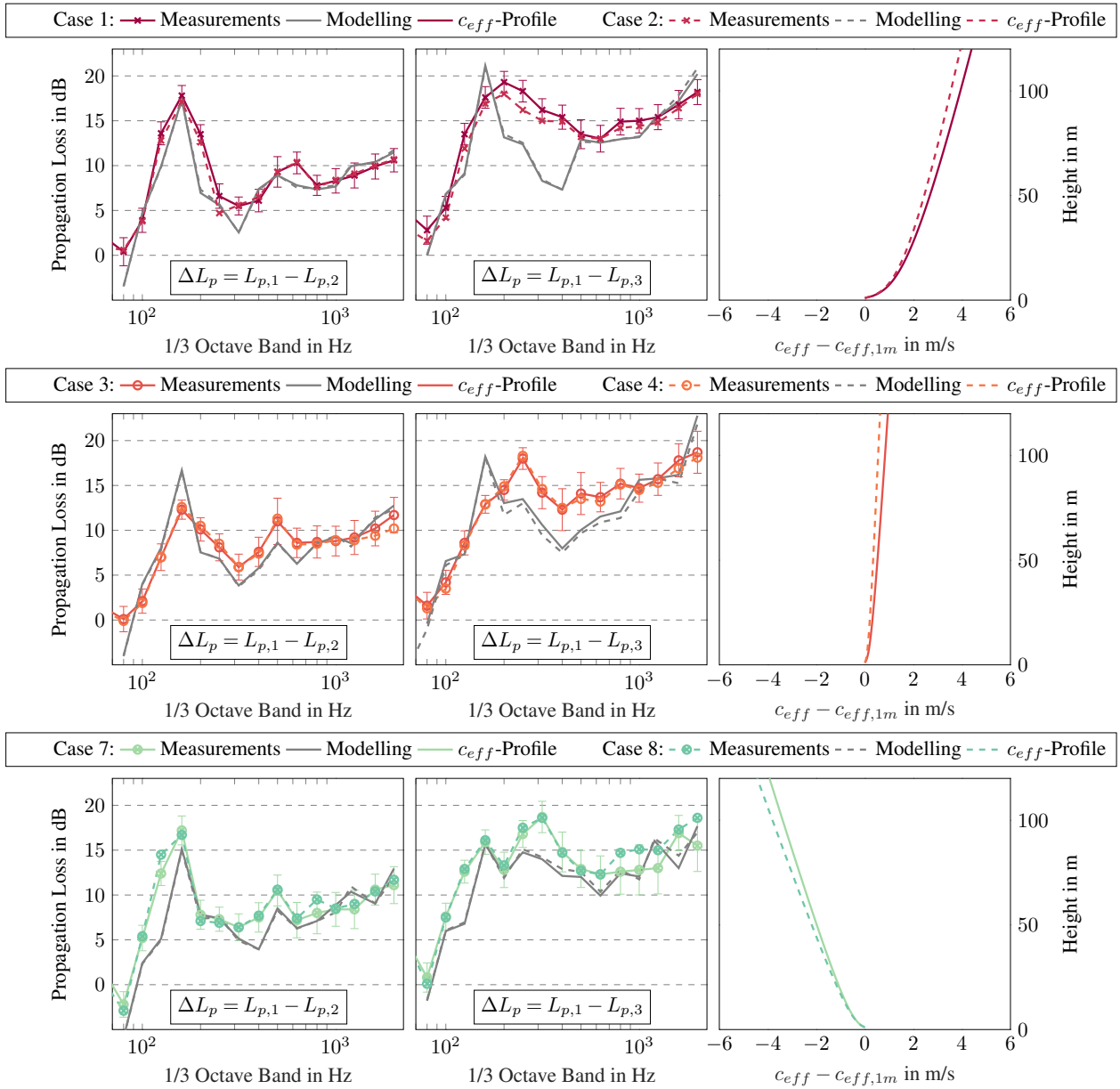


Figure 8. Comparison of measured and modelled sound propagation losses per 1/3 octave band for cases 1 to 4 and 7 to 8
left: Propagation losses between Mic 1 (178 m) and Mic 2 (535 m) including standard deviation for one measurement case
middle: Propagation losses between Mic 1 (178 m) and Mic 3 (845 m) including standard deviation for one measurement case
right: Normalized profiles of effective sound speed

With higher distances, i.e. for losses between 178 and 845 m, a more pronounced discrepancy between measured and modelled values is observed. Here, the curve characteristics between 160 and 400 Hz differ. Those differences are further addressed in the following.

380 In downwind direction (cases 1 and 2), the measured peak is observed over a broader frequency spectrum when compared to the modelled spectrum. At the band with a centre frequency of 400 Hz, the difference between measured and modelled values is approx. 7 dB. This difference could be due to changed ground properties. Due to the large standard deviation of humidity (see Sec. 3.1), an increased probability of rainfall is present during the period of cases 1 and 2. The propagation attributes and correspondingly the losses change with wet grass. The influence of different ground conditions on sound propagation is shown
385 in Sec. 4.2.

For crosswind conditions (cases 3 and 4), for the measured losses between 178 and 845 m, the peak is shifted to 250 Hz which corresponds to a shift of two bands. In the modelling, the peak is still very pronounced at 160 Hz, although a local maximum is identified at 250 Hz. However, this is much less pronounced than in the measurements.

For upwind conditions (cases 7 and 8), two peaks at 160 Hz and 250 respectively 315 Hz are evident in the measured
390 and modelled losses for larger distances. With increasing distance, the refraction effects, which depend in particular on the effective sound speed profile, become more important. The sound is refracted upward in upwind conditions, while it is refracted downward in downwind conditions. Accordingly, especially at long distances, the incidence angles to the ground and thus the frequency-dependent ground reflections change in terms of the sound speed profile. As a result, the curve characteristics change in dependence of sound speed profiles and, hence, sound direction.

395 The cases 9 and 10 are characterized by strong upwind conditions. The measured and modelled losses of these cases are shown in Fig. 9. [Here, modelled results are presented without turbulence.](#) The effect of turbulence is well seen in the modelled sound propagation losses between 178 and 850 m. Due to the upward refraction, a shadow zone is created in strong upwind conditions. Since sound waves cannot enter directly in the shadow zone, the propagation losses modelled without turbulence increase significantly at high frequency ranges. The propagation losses reach up to 50 dB. In reality, the sound waves are
400 scattered at turbulent eddies and consequently enter the shadow zone. Hence, these strong losses are not present in the measurements. [However, the measured sound pressure levels also become lower in the shadow zone. In addition, the background noise in the high frequency range is critical, so that the identification of the wind turbine noise is difficult above 1000 Hz.](#) While the model overestimates the sound levels in greater distance, an underestimation is observed in smaller distance. Here, the modelled losses are about 4 dB lower than the measured ones.

405 3.2.2 Comparison of overall sound pressure level

The overall sound pressure levels are calculated considering the examined frequency bands (80 to 2000 Hz). The differences between measured and modelled propagation losses in overall sound pressure levels between 178 and 535 respectively 178 and 845 m are shown in Fig. 10a and 10b. A negative value implies an overestimated and a positive value an underestimated prediction of the propagation losses.

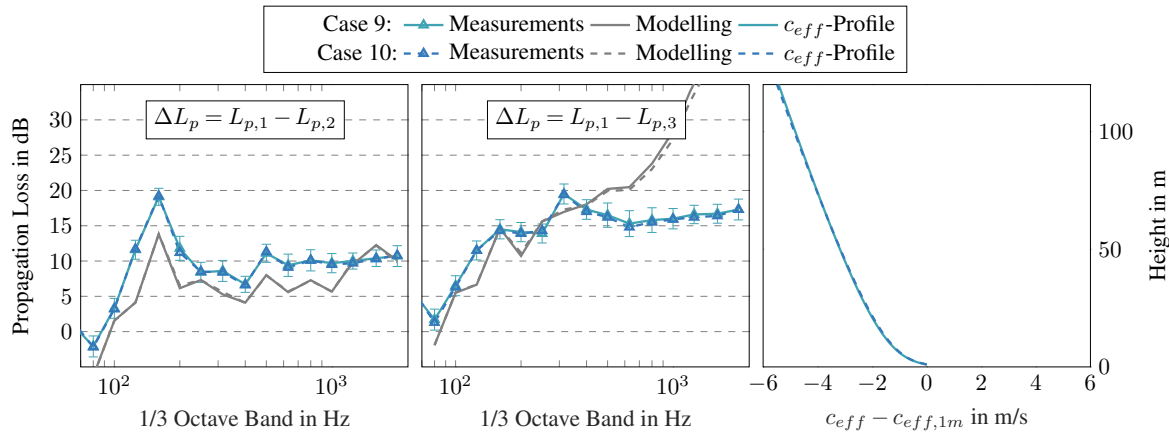


Figure 9. Comparison of measured and modelled propagation losses without turbulence per 1/3 octave band for cases 9 and 10
left: Propagation losses between Mic 1 (178 m) and Mic 2 (535 m) including standard deviation for one measurement case
middle: Propagation losses between Mic 1 (178 m) and Mic 3 (845 m) including standard deviation for one measurement case
right: Normalized profiles of effective sound speed

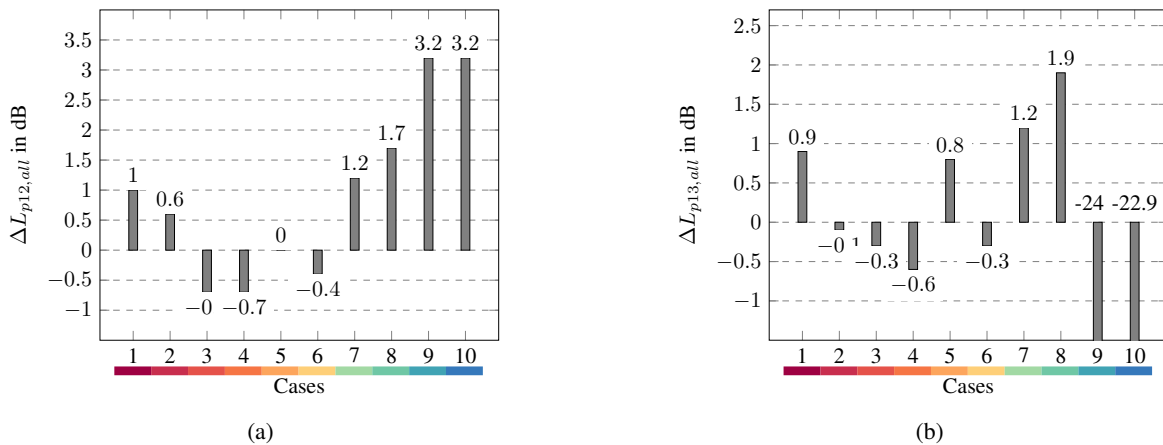
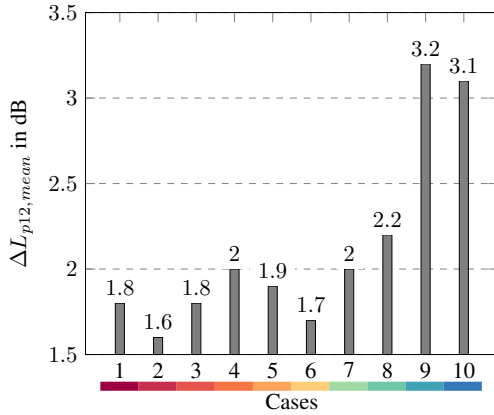
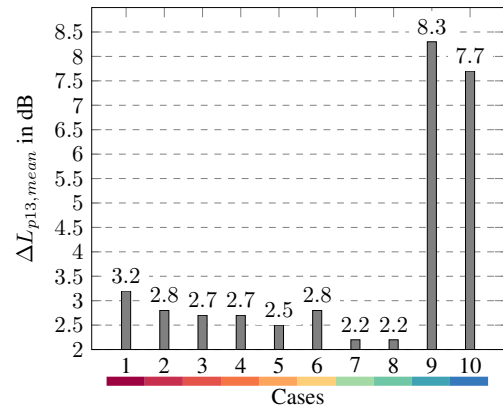


Figure 10. Difference of measured and modelled overall propagation losses between (a) Mic 1 (178 m) and Mic 2 (535 m) and (b) Mic 1 (178 m) and Mic 3 (845 m)

410 For other directions than strong upwind, the model generally predicts the propagation losses in overall sound pressure level well. The differences between model and measurements are less than 2 dB. Due to missing turbulences in the simulations, the differences in strong upwind direction exceeds 20 dB at 845 m. Because of shadow zones, turbulences getting more important with increasing distance.



(a)



(b)

Figure 11. Mean difference of measured and modelled propagation losses over frequencies between (a) Mic 1 (178 m) and Mic 2 (535 m) and (b) Mic 1 (178 m) and Mic 3 (845 m)

3.3 Validity of Model Prediction

415 To evaluate the validity of the model prediction in 1/3 octave bands, the mean of the absolute difference between measured and modelled propagation losses is calculated over the frequency band i :

$$\Delta L_{p,mean} = \frac{1}{N} \sum_i^N |\Delta L_{p,model}(f_i) - \Delta L_{p,meas.}(f_i)|. \quad (13)$$

420 Calculated $\Delta L_{p,mean}$ between 178 and 535 respectively 178 and 845 m are shown in Fig. 11a and 11b for all validation cases. Between 178 and 535 m, $\Delta L_{p,mean}$ is between 1.6 dB (case 2) and 3.2 dB (case 9). For all cases, $\Delta L_{p12,mean}$ increase with greater distance. $\Delta L_{p13,mean}$ is between 2.2 and 8.3 dB. Since turbulence is not taken into account in the simulations, the measured and modelled 1/3 octave spectra differ the most in strong upwind direction. For the other wind directions, $\Delta L_{p13,mean}$ smaller than 3.2 dB are obtained. The difference for case 1 (3.2 dB) is due to the broad measured peak in the middle frequency range (see Fig. 8).

4 Discussion

425 Discrepancies between measured and modelled 1/3 octave spectra are observed, especially at greater distances. To discuss these discrepancies, the modelling of the sound source and the ground effects will be addressed in the following. In addition, the homogeneity of the atmospheric parameters and the influence of time averaging the measured data are addressed. Accordingly, the discussion in this paper focuses on the essentials. General limitations of the PE method, which are described in detail in Salomons (2001), are not presented.

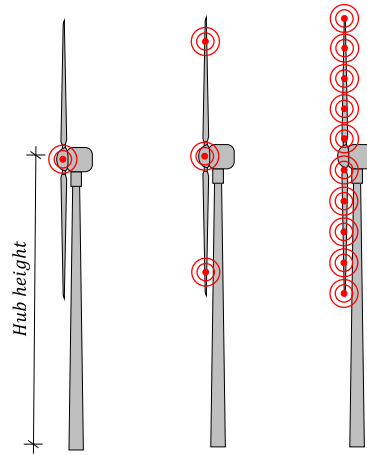


Figure 12. Schematic illustration of the setup with one, three and ten point sources.

430 4.1 Source modelling

The chosen method representing a wind turbine as a sound source is simplified. As in Nyborg et al. (2022), three incoherent sound sources with equal source strength are assumed. This simplification is necessary due to insufficient information about the individual point sources and the source distribution over height. Verification of the validity of these assumptions is beyond the scope of this work. However, many prediction models and guidelines assume that the sound source of a wind turbine is a
 435 monopole source located at the hub height of the turbine, e.g., ISO 9613-2 (1996), Lee et al. (2016). Theoretical studies show that this assumption is valid for predicting the overall sound pressure level at distances greater than twice the blade length (Makarewicz, 2011). Ecotiè (2015) shows that this assumption is not suitable for spectral analysis, as effects of ground reflections are not well represented using one point source. Nyborg et al. (2022) present that the agreement with measured spectra was significantly improved with three distributed point sources. With increasing distance, the difference between the
 440 results of one source and three sources decreases.

To investigate the influence on the sound spectrum, simulations with one, three and ten point sources are compared. In the latter case, ten point sources are distributed over the rotor diameter. In Fig. 12, the setup of one, three and ten point sources is illustrated schematically. The results of the first and the third validation cases between 178 and 845 m are shown in Fig. 13. The results from the literature (e.g., Heutschi et al. (2014), Cotté (2019) and Nyborg et al. (2022)) are also concluded in this work.
 445 Several peaks and valleys are observed in the 1/3 octave spectrum with one point source. These occur due to interference effects and are smoothed in reality by superimposing the interference patterns of multiple sources. Compared to multiple sources, the monopole model results reproduce the 1/3 octave spectrum of the sound propagation losses less well and deviate more from the measurements. The results with three and ten monopole sources are very similar to each other.

Simply increasing the number of sources beyond three does not improve the accuracy. It cannot be excluded that the discrepancies in the 1/3 octave spectrum are at least partly due to the assumptions in the source modelling.
 450

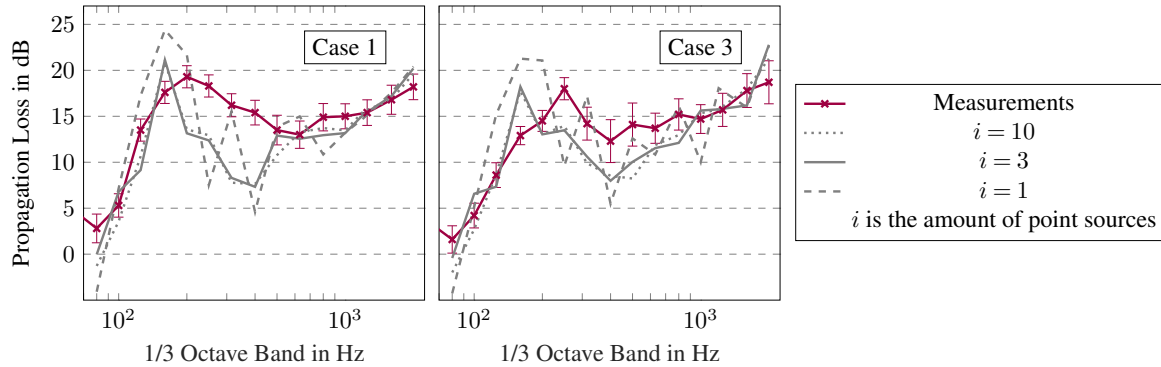


Figure 13. Comparison of measured and modelled sound propagation losses between 178 and 845 m with different amounts of sound sources i per 1/3 octave band

4.2 Ground properties

For various reasons, such as a changes in soil humidity, the ground property can vary between the cases. Since the cases with the same wind direction are close in time (see Tab. 3) and have similar measured spectra (see Fig. 8), it is assumed that they have similar soil conditions. However, the soil conditions can vary between cases with different wind directions, which can have a significant impact on the 1/3 octave spectra and may explain the discrepancies between modelled and measured data at 845 m. In addition, the soil conditions can change along the propagation path. As the model used assumes constant ground conditions along the propagation path, this cannot be investigated in this paper.

In the Delany-Bazley model, the ground impedances are only related to the flow resistivity. Hence, the influence of ground properties on the 1/3 octave band is examined by selected representative values of flow resistivity, which are based on the classification given in Plovsing and Kragh (2000). The classification including the values of flow resistivity and a description are summarized in Tab. 5. Accordingly, values from 12.5 kNsm^{-4} (very soft) to 500 kNsm^{-4} (compacted field) are considered and discussed. As before, this discussion is representatively performed on the example of the first and the third validation case and for the larger distance of 845 m. The measured and simulated losses at different ground impedances are plotted per 1/3 octave band in Fig. 14.

For both cases, the selected ground impedances have an impact on the level of propagation losses as well as on the position and width of the propagation peak. Generally, lower flow resistivity results in higher propagation losses. This is due to the increased absorption and/or decreased reflections at the ground for lower values of flow resistivity. Consequently, higher propagation losses are modelled with moss-covered ground (12.5 kNsm^{-4}) than with compacted fields (500 kNsm^{-4}). In addition, a broader propagation peak with decreasing values is observed in Fig. 14. This phenomenon is not caused by the increasing absorption but by a phase shift between the incident and the reflected wave. At very low values, like 12.5 kNsm^{-4} , the peak is broader and also shifted towards lower frequencies. Evidently, the soil conditions have a significant impact on

Table 5. Classification of selected ground impedance types i.e. values of flow resistivity according to Plovsing and Kragh (2000)

Class	Representative flow resistivity σ in $kNsm^{-4}$	Description
A	12.5	Very soft (snow or moss-like)
C	80	Uncompacted, loose ground
D	200	Normal uncompacted ground
E	500	Compacted field and gravel

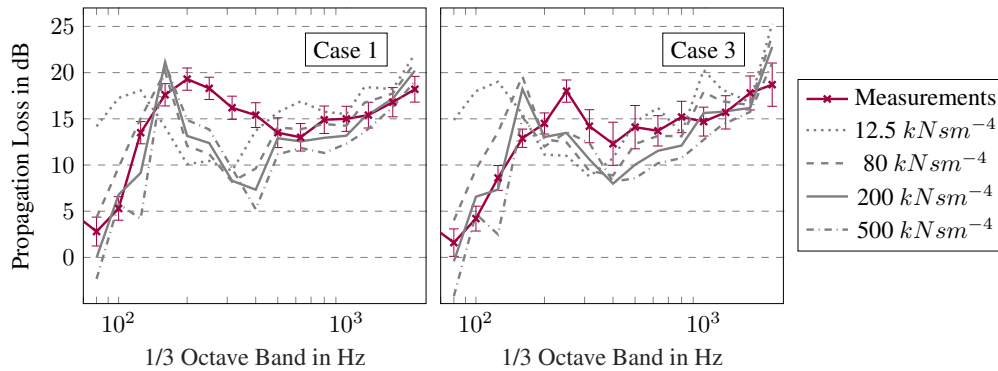


Figure 14. Comparison of measured and modelled sound propagation losses between 178 and 845 m with representative values of flow resistivity per 1/3 octave band

the sound propagation loss. Simply changing the flow resistance does not clarify the cause of the discrepancies in 1/3 octave spectra and does not lead to better validation results.

4.3 Homogeneity of atmospheric parameters

475 In general, the atmospheric parameters are affected by the topography of the wind farm. As described in Sec. 2.2, the terrain of the wind farm is flat. The area consists mainly of meadows, agricultural land, and single ditches. Isolated trees with a height of 10 to 20 m and buildings are only present at the edge of the wind farm at a distance of about 1 km. Therefore, the influence of the topography on the measured data is considered insignificant.

480 To analyse the homogeneity of the atmospheric parameters, the wind turbine SCADA data is compared with the data from the 100 m mast. The 100 m mast is located approx. 2 km north-west of the wind turbine. It should be noted that the turbine operation can affect the meteorological measurements at the hub height. The comparison between the data is shown in Fig. 15. Measured values of temperature and wind direction as well as profiles of wind speed and normalized effective sound speed are presented.

In Fig. 15a, the measured temperatures at the meteorological mast (53 m) and at the wind turbine (119 m) are compared. As
485 the temperature measurements at the mast height of 95 m are erroneous, a direct comparison is not possible. In all validation
cases, the temperature measured at the hub height of the turbine is 1-2 °C higher than the temperature measured at 53 m
height on the meteorological mast. Accordingly, the temperature increases with height, indicating a stable atmosphere and an
inversion situation.

Fig. 15b shows the measured wind directions at a height of 95 m (meteorological mast) and 119 m (wind turbine). With
490 differences of more than 8° and relatively high standard deviations, the measured data differ particularly in upwind direction
(cases 7 to 10). Herein, case 7 (12°) and case 10 (11°) are prominent. Similar wind directions were measured for the other
cases. The differences are less than 3°.

In Fig. 15c, the measured wind speeds at the mast (29, 57, 76, 100 m) and at the hub height of the wind turbine (119 m) are
plotted against height for the selected cases. In most cases, slightly higher wind speeds are measured at 119 m than at 100 m.
495 For case 5, e.g., the wind speed increases by about 2 m/s from 100 m to 119 m. For case 1, the wind speed at 119 m is slightly
lower than at 100 m.

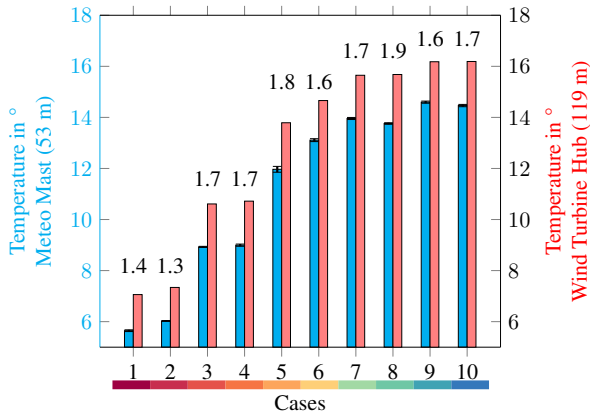
For sound propagation, the profiles of the effective sound speed are essential. The calculated profiles and the values of the
effective sound speed determined with the measured data are shown in Fig. 15d. While the temperature has a negligible effect
on the effective sound speed, the differences in measured wind direction and wind speed are reflected in the effective sound
500 speed. Due to the high differences in the measured wind directions, the calculated values at 119 m deviate from the profile in
case 7. The deviation is approx. 1 m/s. Similar deviations can be seen for case 1. These deviations are due to the difference
in wind speed. For cases 1,7, and 8, the profile of the effective sound speed could be changed slightly when the SCADA data
were included. This is expected to have a negligible impact on the validation results.

4.4 Effect of time averaging the measured data

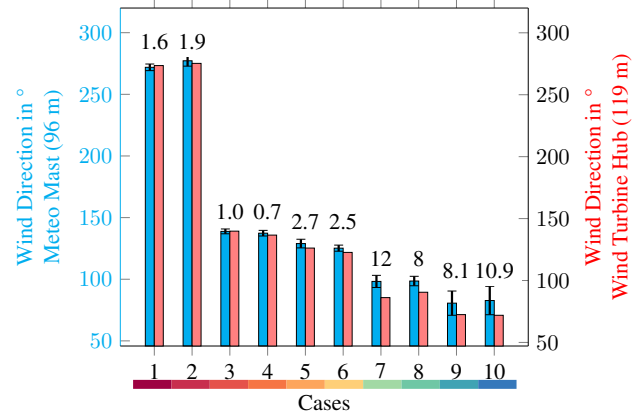
505 As short-term fluctuations of the meteorological parameters can affect the measured acoustic data, the influence of averaging
meteorological and acoustic quantities on the validation results is examined. The first case is taken as an example and four
averaging time periods are considered: one, three, five and ten minutes.

In Fig. 16a, the height-dependent averaged wind speeds and, in Fig. 16b, the measured wind directions at 96 m are shown for
the analysis periods. The standard deviations are also included and additionally listed in Tab. 6. For averaging periods of three,
510 five and ten minutes, similar wind profiles and wind direction values are observed. When averaging over one minute, deviations
occur in the wind profile. Due to fluctuations, the wind profile does not show the usual logarithmic curve. These short-term
fluctuations are disregarded when averaging over a longer period of time. The standard deviation of the height-dependent wind
speed is between 0.33 and 0.59 m/s. Except for the one minute averaging, the standard deviation of the wind speed decreases
with increasing height and decreasing averaging period. The standard deviation of the wind direction for all periods is similar
515 and approx. 2.5°. Thus, in this case, the wind direction does not depend significantly on the averaging period.

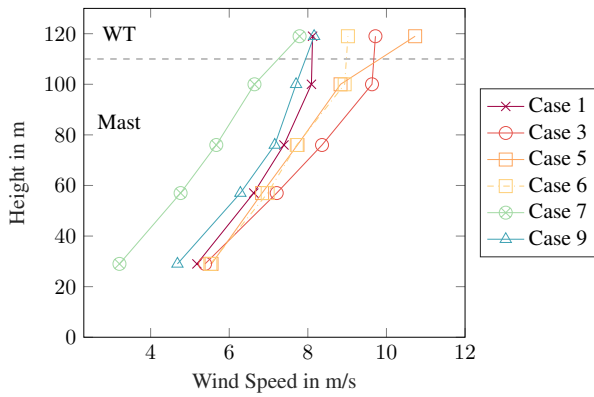
Dependent of the four averaging periods, the calculated sound propagation losses between 178 and 535 respectively 178 and
845 m are shown in Fig. 17. Thereby, the losses are related to the propagation losses obtained with an averaging period of five



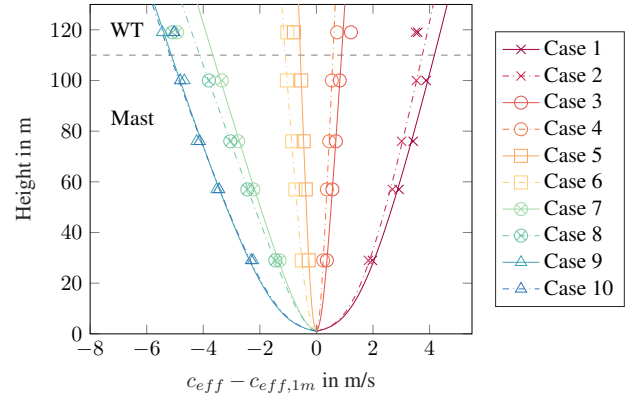
(a) Temperature measured at 53 m on the meteorological mast and at the wind turbine hub (119 m)



(b) Wind direction measured at 96 m on the meteorological mast and at the wind turbine hub (119 m)

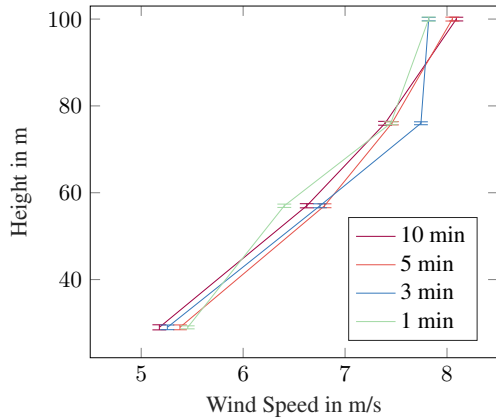


(c) Wind speed measured at various heights on the meteorological mast and at the wind turbine hub (119 m)

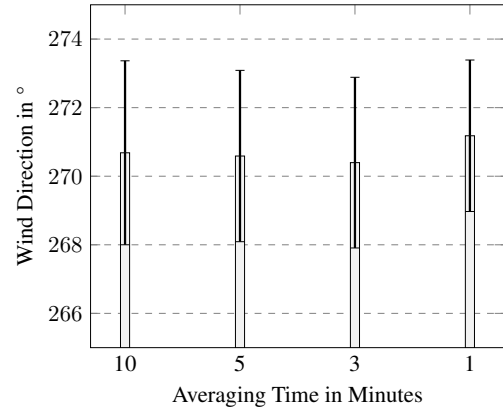


(d) Profiles of effective sound speed (lines) based on measured data (markers), normalized with the effective sound speed at 1 m

Figure 15. Comparison of atmospheric data measured at the 100 m mast and at the wind turbine (119 m). In a) and b), the differences between the data are written above the bar and the standard deviations are given for the mast measurements.



(a) Measured wind speeds at different heights on the meteorological mast



(b) Measured wind direction at 96 m on the meteorological mast

Figure 16. Measured wind speed and wind direction averaged over ten, five, three and one minute and its standard deviation

Table 6. Standard deviations of measured wind speed and wind direction for averaging periods of one, three, five and ten minutes

	10 minutes	5 minutes	3 minutes	1 minutes
Wind speed at 29 m in m/s	0.59	0.48	0.44	0.43
Wind speed at 57 m in m/s	0.56	0.45	0.37	0.45
Wind speed at 76 m in m/s	0.54	0.45	0.34	0.40
Wind speed at 100m in m/s	0.35	0.38	0.33	0.47
Wind direction at 53m in °	2.68	2.50	2.49	2.21

minutes. The measured losses with an averaging period of three and five minutes are at a similar level and differ only between -0.4 and 0.2 dB. Losses averaged over one and ten minutes show more deviations. The maximum deviations are observed in the lower and upper frequency bands. For the sound propagation losses between 178 and 535 m, the maximum difference is 1.6 dB. Between 178 and 845 m, the maximum deviation is smaller (-0.7 dB). Hence, for a few frequencies, the averaging period has an influence on the validation results.

Based on the findings presented, an averaging period of three to five minutes is recommended, when using the data for validation purposes, This period is long enough to neglect the short-term fluctuations in the meteorological variables, which may differ along the propagation path and cannot be described by the model used in this work. An averaging period of ten minutes is not recommended due to the acoustic evaluation. Here, a dominant noise of the wind turbine has to be guaranteed.

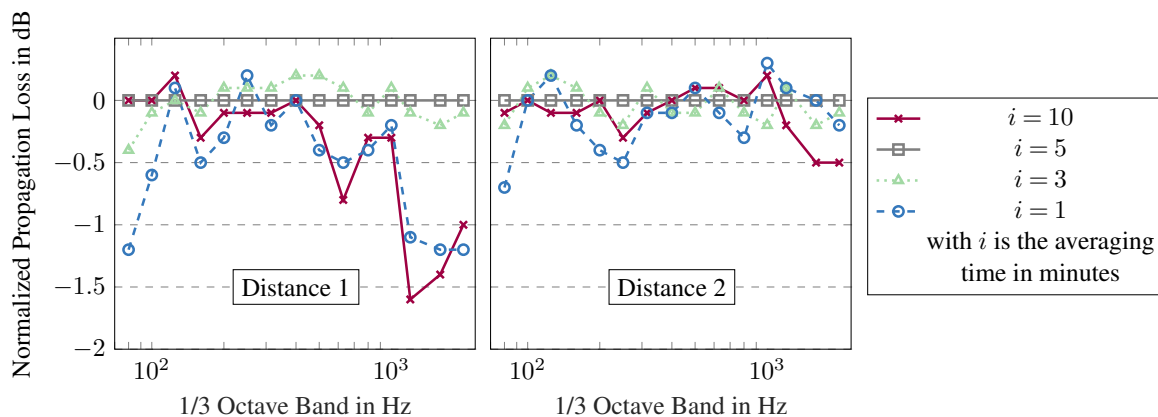


Figure 17. Comparison of measured sound propagation losses between 178 and 535 m and 178 and 845 m for the different averaging times i per 1/3 octave band. The data is normalized to the results averaged over five minutes

5 Conclusion and outlook

The objectives of this paper were to introduce, to prepare, to apply and to provide comprehensive wind turbine noise measurement data for the systematic validation of sound propagation models. Extensive measurement campaigns were carried out in the area of wind turbines, which involved the acquisition of meteorological, acoustic and turbine-specific data. Meteorological quantities, such as wind speed, temperature and humidity, were collected at different heights of a 100 m measurement mast. For the recording of acoustic data, autarkic acoustic measuring stations were positioned at 178, 535 and 845 m from the wind turbine.

The atmospheric and the acoustic quantities were processed and analysed. On this basis, a total of ten validation cases were identified, which were divided into five groups depending on the direction of sound propagation. Based on the meteorological measurements as well as the SCADA data of the turbine, relevant input parameters for the sound propagation model were derived. In addition to the measurement geometry and information on the determination of air absorption, these also include sound speed profiles.

In this paper, the processed measurement data is used to validate a sound propagation model that applied the Crank-Nicolson parabolic equations method. The validation was performed by comparing the measured and modelled sound propagation losses per 1/3 octave spectra and overall sound pressure levels between 178 and 535 and 845 m, respectively. **In general, the agreement between measured and modelled data is not satisfactory in strong upwind conditions, where turbulence is not considered in the model.** In the other wind directions, the measured spectrum is well reproduced. In both measurements and modelling, losses increase with increasing frequency due to air absorption. Because of interferences, peaks and valleys of the sound propagation losses exist in the frequency band and are identified in the measured and modelled data. **In greater distances, for some cases broader peaks and/or a shift of peaks towards higher frequencies are measured. This is not reproduced by the model, which could be explained by inadequate source and ground modelling. However, the exact cause of these discrepancies could not**

be identified within the scope of this paper and is, thus, part of future investigations. The comparison between the measured and modelled sound propagation losses in the overall sound pressure level shows a good agreement, with the exception of the strong upwind situation.

To assess the validity of the model prediction, the mean of the absolute difference between modelled and measured losses is introduced. For directions other than strong upwind, the mean of the absolute difference is between 1.6 and 3.2 dB.

This paper provides the first step towards the publication of measurement and simulation data in the field of wind turbine sound propagation. The data sets used for the validation are provided openly accessible for further research purposes. Further data sets will be added in future work. A comprehensive structured data repository will be created, containing anonymized research data on wind turbine sound emission and immission under various atmospheric and operational conditions.

Data availability. The measured and modelled data used for the validation are provided and available for research purposes. URL: <https://data.uni-hannover.de/dataset/wtn-propagation>

Appendix A: Validation results - Comparison of 1/3 octave band for cases 5 and 6

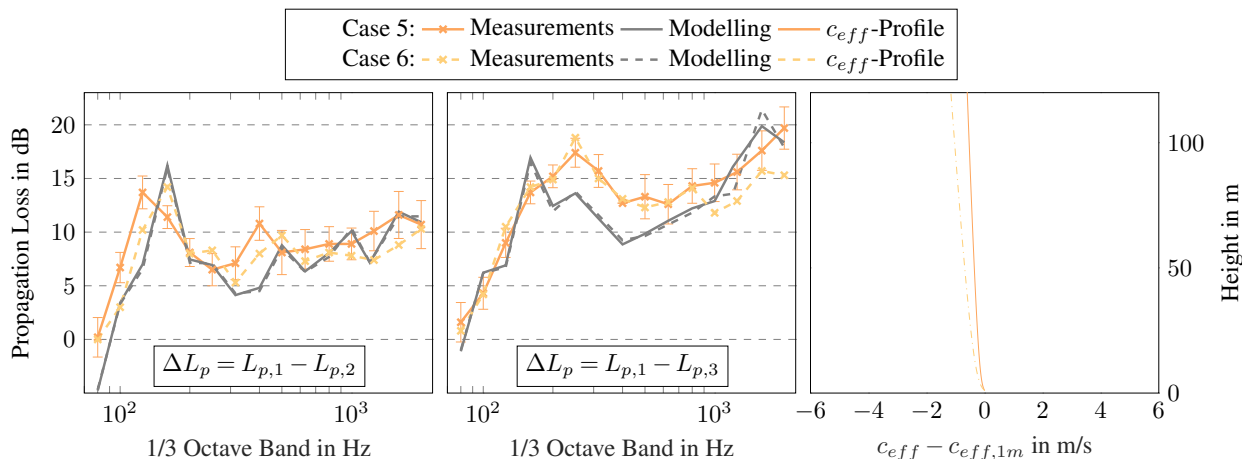


Figure A1. Comparison of measured and modelled propagation losses per 1/3 octave band for cases 5 and 6

left: Propagation losses between Mic 1 (178 m) and Mic 2 (535 m) including standard deviation for measurement case 5

middle: Propagation losses between Mic 1 (178 m) and Mic 3 (845 m) including standard deviation for measurement case 5

right: Normalized profiles of effective sound speed

560 *Author contributions.* SK did the main research work, performed and analysed the field measurements, conducted the validation and wrote most of the manuscript. The numerical model was implemented by JH. Through discussions and feedback, JH, TB and RR contributed to the interpretation and discussion of the results. The manuscript was revised and improved by all authors.

Competing interests. RR is member of the editorial board of Wind Energy Science. The peer-review process was guided by an independent editor. The authors have also no other competing interests to declare.

565 *Acknowledgements.* Within in the project “WEA-Akzeptanz”, the research at Leibniz University of Hannover is funded by the Federal Ministry for Economic Affairs and Energy by an act of the German Parliament (project ref. no. 0324134A). The Institute of Structural Analysis is part of the Center for Wind Energy Research For-Wind. The authors gratefully acknowledge the financial support from the research funding organization, the provision of meteorological data by the DNV GL (Det Norske Veritas and Germanischer Lloyd), and the

great support from the operator of the wind farm, named by Bürgerwindpark Janneby eG. For further information about the project, please
570 visit the project homepage at www.wea-akzeptanz.uni-hannover.de. Lastly, the authors gratefully acknowledge the time and effort of the reviewers. The valuable comments clearly improved the quality of the manuscript.

References

- Argyle, P. and Watson, S.: Assessing the dependence of surface layer atmospheric stability on measurement height at offshore locations, *Journal of Wind Engineering and Industrial Aerodynamics*, 131, 2014.
- 575 Attenborough, K., Taherzadeh, S., Bass, H. E., Di, X., Raspet, R., Becker, G. R., Güdesen, A., Chrestman, A., Daigle, G. A., L'Espérance, A., Gabillet, Y., Gilbert, K. E., Li, Y. L., White, M. J., Naz, P., Noble, J. M., and van Hoof, H. A. J. M.: Benchmark cases for outdoor sound propagation models, *The Journal of the Acoustical Society of America*, 97, 173–191, <https://doi.org/10.1121/1.412302>, 1995.
- Barlas, E., Zhu, W. J., Shen, W. Z., Dag, K. O., and Moriarty, P.: Consistent modelling of wind turbine noise propagation from source to receiver, *The Journal of the Acoustical Society of America*, 142, 3297, <https://doi.org/10.1121/1.5012747>, 2017a.
- 580 Barlas, E., Zhu, W. J., Shen, W. Z., Kelly, M., and Andersen, S. J.: Effects of wind turbine wake on atmospheric sound propagation, *Applied Acoustics*, 122, 51–61, <https://doi.org/10.1016/j.apacoust.2017.02.010>, 2017b.
- Bass, H. E., Sutherland, L. C., Zuckerwar, A. J., Blackstock, D. T., and Hester, D. M.: Atmospheric absorption of sound: Further developments, *Journal of the Acoustical Society of America*, 97, 680–683, 1995.
- Bérenghier, M. C., Gauvreau, B., Blanc-Benon, P., and Juvé, D.: Outdoor Sound Propagation: A Short Review on Analytical and Numerical
585 Approaches, *Acta Acustica united with Acustica*, pp. 980–991, 2003.
- Bolin, K. and Boué, M.: Long range sound propagation over a seasurface, *The Journal of the Acoustical Society of America*, 126(5), 2191–2197, 2009.
- Conrady, K., Sjöblom, A., and Larsson, C.: Impact of snow on sound propagating from wind turbines, *Wind Energy*, 21, 1282–1295, <https://doi.org/10.1002/we.2254>, 2018.
- 590 Cotté, B.: Extended source models for wind turbine noise propagation, *The Journal of the Acoustical Society of America*, 145, 1363, <https://doi.org/https://doi.org/10.1121/1.5093307>, 2019.
- Delany, M. E. and Bazley, E. N.: Acoustical properties of fibrous absorbent materials, *Applied Acoustics*, 3, 105 – 116, 1970.
- DK-BEK513: Bekendtgørelse om støj fra vindmøller, <https://www.retsinformation.dk/Forms/R0710.aspx?id=206666>, 2019.
- Ecotière, D.: Can we really predict wind turbine noise with only one point source?, 6th International on Wind Turbine Noise, 2015.
- 595 Golan, J.: The Moore-Penrose Pseudoinverse. In: *Foundations of Linear Algebra*, vol. 11, Springer, Dordrecht, 1995.
- Heimann, D. and Salomons, E.: Testing meteorological classifications for the prediction of long-term average sound levels, *Applied Acoustics*, 65, 925–950, 2004.
- Heutschi, K., Pieren, R., Müller, M., Manyoky, M., Hayek, U., and Eggenschwiler, K.: Auralization of Wind Turbine Noise: Propagation Filtering and Vegetation Noise Synthesis, *Acta Acustica united with Acustica*, 100, 13–24, 2014.
- 600 IEC 61400-12: Wind turbines: Acoustic noise measurement techniques, International standard, International Electrotechnical Commission, ed. 3.0 edn., 2012.
- ISO 9613-2: Acoustics — Attenuation of sound during propagation outdoors — Part 2: General method of calculation, International standard, International standard, ed. 1 edn., 1996.
- Kaliski, K. and Wilson, K. D.: Improving predictions of wind turbine noise using PE modeling, in *NOISE-CON 2011*, pp. 1–13, 2011.
- 605 Larsson, C. and Öhlund, O.: Wind turbine sound - metric and guidelines, *Proceedings of the 43rd International Congress on Noise Control Engineering*, Melbourne, Australia, 2014, 2014.
- Lee, J. and Zhao, F.: *Global Wind Report 2021*, 2021.

- Lee, S., Lee, D., and Honhoff, S.: Prediction of far-field wind turbine noise propagation with parabolic equation, *The Journal of the Acoustical Society of America*, 140, 767, <https://doi.org/doi: 10.1121/1.4958996>, 2016.
- 610 Makarewicz, R.: Is a wind turbine a point source?, *Journal of the Acoustical Society of America*, 129, <https://doi.org/10.1121/1.3514426>, 2011.
- Martens, S., Boas, M., Bohne, T., and Rolfes, R.: Towards the use of secondary windscreens to improve wind turbine sound measurements, in: *Proceedings of 15th EAWC PhD Seminar on Wind Energy*, Nantes, France, 2019.
- Martens, S., Bohne, T., and Rolfes, R.: An evaluation method for extensive wind turbine sound measurement data and its application, *Proceedings of Meetings on Acoustics*, *Acoustical Society of America*, 41, <https://doi.org/https://doi.org/10.1121/2.0001326>, 2020.
- 615 Miki, Y.: Acoustical properties of porous materials - Modifications of Delany-Bazley models, *Journal of the Acoustical Society of Japan*, 11, 19 – 24, 1990.
- Nyborg, C. M., Fischer, A., Thysell, E., Feng, J., Søndergaard, L. S., Sørensen, T., Hansen, T. R., Hansen, K. S., and Bertagnolio, F.: Propagation of wind turbine noise: measurements and model evaluation, *Journal of Physics: Conference Series*, 2265, 2022.
- 620 Oerlemans, S., Sijtsma, P., and Méndez López, B.: Location and quantification of noise sources on a wind turbine, *Journal of Sound and Vibration*, 299, 869 – 883, 2007.
- Plovsing, B.: *Proposal for Nordtest Methods: Nord2000 – Prediction of Outdoor Sound Propagation.*, 2014.
- Plovsing, B. and Kragh, J.: *Nord2000. Comprehensive Outdoor Sound Propagation Model. Part 1: Propagation in an At- mosphere without Significant Refraction.*, 2000.
- 625 Prospathopoulos, J. M. and Voutsinas, S. G.: Noise propagation issues in wind energy applications, *J. Solar Energy Eng.*, 127, 234–241, <https://doi.org/doi: 10.1121/1.4958996>, 2005.
- Salomons, E. M.: *Computational Atmospheric Acoustics*, Springer Science+Buisness Media B.V., Dordrecht, New York, 2001.
- Shen, W. Z., Sessarego, M., Cao, J., Nyborg, C. M., Hansen, K. S., Bertagnolio, F., Madsen, H. A., Hansen, P., Vignaroli, A., and Sørensen, T.: Validation of noise propagation models against detailed flow and acoustic measurements, *Journal of Physics: Conference Series*, 1618, 630 2020.
- Søndergaard, B. and Plovsing, B.: *Report of PSO-07 F&U project no 7389 - Noise and energy optimization of wind farms: Validation of the Nord2000 propagation model for use on wind turbine noise*, 2009.
- van den Berg, G. P.: Effects of the wind profile at night on wind turbine sound, *Journal of Sound and Vibration*, 277, 955–970, <https://doi.org/10.1016/j.jsv.2003.09.050>, 2004.
- 635 van den Berg, G. P.: Wind Turbine Power and Sound in Relation to Atmospheric Stability, *WIND ENERGY*, 11, 151 – 169, 2008.
- West, M., Gilbert, K., and Sack, R. A.: A tutorial on the parabolic equation (PE) model used for long range sound propagation in the atmosphere, *Applied Acoustics*, 37, 31–49, [https://doi.org/10.1016/0003-682X\(92\)90009-H](https://doi.org/10.1016/0003-682X(92)90009-H), 1992.
- Zhu, W. J., Shen, W. Z., Barlas, E., Bertagnolio, F., and Sørensen, J. N.: Wind turbine noise generation and propagation modeling at DTU Wind Energy: A review, *Renewable and Sustainable Energy Reviews*, 88, 133–150, 640 <https://doi.org/https://doi.org/10.1016/j.rser.2018.02.029>, 2018.