

Statistical impact of wind-speed ramp events on turbines, via observations and coupled fluid-dynamic and aeroelastic simulations

Mark Kelly¹, Søren Juhl Andersen², Ásta Hannesdóttir¹

¹Department of Wind Energy, Danish Technical University, Risø Lab/Campus, Roskilde 4000, Denmark

5 ²Department of Wind Energy, Danish Technical University, Lyngby 2800, Denmark

Correspondence to: Mark Kelly (MKEL@dtu.dk)

Abstract. Via 11 years of high-frequency measurements, we calculated the probability space of expected offshore wind speed ramps, recasting it compactly in terms of relevant load-driving quantities for horizontal-axis wind turbines. A statistical ensemble of events in reduced ramp-parameter space (ramp acceleration, mean speed after ramp, upper-level shear) was created, to capture the variability of ramp parameters and also allow connection of such to ramp-driven loads. Constrained 10 Mann-model (CMM) turbulence simulations coupled to an aero-elastic model were made for each ensemble member, for a single turbine. Ramp acceleration was found to dominate the maxima of thrust-associated loads, with a ramp-induced increase of 45–50% for blade-root flap-wise bending moment and tower base fore-aft moment, plus ~3% per 0.1 m s^{-2} of bulk ramp acceleration magnitude.

15 The ensemble of ramp events from the CMM was also embedded in large-eddy simulation (LES) of a wind farm consisting of rows of nine turbines. The LES uses actuator-line modelling for the turbines and is coupled to the aero-elastic model. The LES results indicate that the ramps, and the mean acceleration associated with them, tend to persist through farm. Depending on the ramp acceleration, ramps crossing rated speed lead to maximum loads, which are nearly constant for the third row and further downwind. Where rated power is not achieved, the loads primarily depend on wind speed; as mean winds weaken 20 within the farm, ramps can again have $U < V_{\text{rated}}$. This leads to higher loads than pre-ramp conditions, with the distance where loads begin to increase depending on inflow U_{max} relative to V_{rated} . For the ramps considered here, the effect of turbulence on loads is found to be small relative to ramp amplitude that causes V_{rated} to be exceeded, but for ramps with $U_{\text{after}} < V_{\text{rated}}$, the combination of ramp and turbulence can cause load maxima. The same sensitivity of loads to acceleration is found in both the CMM-aeroelastic simulations and the coupled LES.

25 1 Introduction

The passage of ramp-like events, whereby wind speed increases significantly over a span of seconds or minutes, can significantly affect the performance of megawatt-scale wind turbines, in terms of loads as well as power production. These events are often associated with the passage of cold fronts (e.g. Musilek & Li, 2011), but are also caused by a number of other mechanisms, depending on the surroundings (Gallego-Castillo *et al.*, 2015; Hannesdóttir & Kelly, 2019). Wind ramps can

30 persist through entire wind farms (as we also show below)—more so than turbulent fluctuations, which are limited in scale
and become affected by the turbines themselves (Andersen et al., 2017b).

The basic ramp quantities directly associated with wind-speed ramp events are the rise time (Δt) and ramp amplitude (ΔU).
In addition to these, a number of observable atmospheric flow quantities can affect turbine loads and performance during the
35 passage of such events; the ramp acceleration $\Delta U/\Delta t$ can affect the loads and production more significantly than ΔU or Δt
alone (e.g. Hannesdóttir, 2018; Hannesdóttir et al., 2021). The primary observable non-ramp quantity, which is expected to
affect a windfarm’s response to ramps, is the above-rotor shear connected with the capping inversion of the atmospheric
boundary layer (Abkar & Porté-Agel, 2013; Kelly et al., 2019a); it is an indicator of how much momentum can mix downward
into the farm, and presumably affect the ramp decay (e.g. Porté-Agel et al., 2020). Although the standard deviation of
40 streamwise velocity fluctuations (σ_u) and turbulence length scale (L_t) generally affect turbine loads and performance, for
ramp-like events Hannesdóttir et al. (2019) found them to be secondary compared to ramp-associated quantities. Thus we are
considering the effects on turbine loads and power for a given rated speed V_{rated} , in terms of the variable space consisting of
 ΔU , Δt , $(dU/dz)_{top}$, U_{before} , σ_u , and L_t . More specifically, we aim to connect the variability in turbine loads to the long-
term statistics of ramps; i.e., to find the statistical effect of wind ramps on wind farms.

45 There are a number of limitations within commonly used models and observations, which motivate the methods we will use
in this study. Within weather-forecasting models, the inability of planetary-boundary layer schemes to represent various
physical processes giving rise to ramps, have limited the ability of the former to predict ramp-like events (Jahn et al., 2017).
Regarding observations, DeMarco & Basu (2018) looked at statistics primarily based on 10-minute averages, with limited
50 analysis based on 1-minute averages from a site in the lee of steep mountains; others have also considered 10-minute mean
statistics, but these do not reliably capture the accelerations (or variability) inherent in ramps—nor permit systematic
connection of ramp characteristics with turbine loads, due to the shorter time scales involved (e.g. Alcayaga, 2017; Dimitrov
& Natarajan, 2017). Thus we examine observational data with sampling rates high enough to adequately characterize ramp-
like events (1 Hz), and employ models which can also resolve velocity fluctuations to such a fine timescale as well as resolving
55 velocity fields with a resolution significantly smaller than turbine blades.

We first report on the probabilistic characterization of wind speed ramps, and then describe two associated model chains
developed and employed to simulate the propagation of ramps through a windfarm; this is followed by analysis of the
modelling results for relevant turbine loads. The probabilistic characterization involves reduction of atmospheric quantities to
60 a more compact and universal space, as well as creation of a statistically representative ensemble of events which can be
simulated in the two model chains. The two model chains are both driven by Mann-model turbulence (Mann, 1994, 1998),
with the synthesized turbulence constrained (Dimitrov & Natarajan, 2017) to include wind speed ramps (Hannesdóttir et
al., 2019). The simpler model ‘chain’ also has the aero-elastic model Flex5 for a single turbine; the other embeds constrained

65 ramp simulations within large-eddy simulation (LES) of a wind farm with actuator line modelling (Sørensen & Shen, 2002) coupled to Flex5.

2 Statistical characterization for model-chain simulations of wind-speed ramps

70 In order to obtain statistics describing offshore wind speed ramps, we analysed the longest timeseries of high-frequency wind data available at common turbine hub heights: 11 years of 1 Hz wind velocity data from the Høvsøre turbine test center on the western coast of Denmark (Peña *et al.*, 2016). Using the streamwise velocity at 100 m height, for the dominant winds crossing the coastline, we are able to effectively obtain offshore statistics at and above this height from Høvsøre (see also e.g. Berg *et al.*, 2015). To detect ramp events, 10-minute records with the largest variances relative to turbulence strength are selected; the top 0.1% of values of $\sigma_u / (\sigma_{u,\text{hpf}} + 1 \text{ m/s})$ are found, where $\sigma_{u,\text{hpf}}$ is the turbulent (high-pass filtered) part of σ_u —as in Hannesdóttir & Kelly (2019)¹. Keeping events where the wind speed is increasing, we identify 216 wind ramp events.

75 Distributions of ΔU and Δt , which are obtained by the ramp-detection method for each ramp, are shown in [Figure 1](#).

Deleted: Figure 1

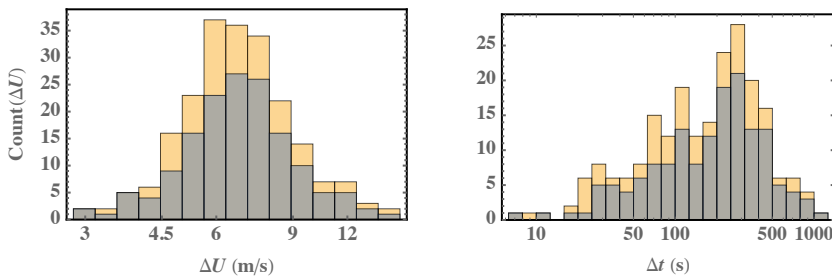


Figure 1: Distributions of ramp amplitude and rise-time. Yellow: all events; blue/dark: excluding events which exceed cut-out or start above rated speed.

80

One consideration we add is whether the ramps begin below rated wind speed and subsequently cross over it—as well as whether the wind speed exceeds the turbine cut-out speed (V_{cut}) for a given ramp. Our aeroelastic modelling employs a NEG/Micon (Vestas) NM80 turbine (Aagard Madsen *et al.*, 2010; Galinos & Larsen, 2015), with upscaled rated power of 2.75MW at $V_{\text{rated}} = 14 \text{ m/s}$ and cutout speed $V_{\text{cut}} = 25 \text{ m/s}$ (Andersen *et al.*, 2017a)². The dominant ramp effects on power

¹ This method finds the strongest ramps relative to turbulence, while also rejecting cases with weak turbulence where $\sigma_{u,\text{hpf}}$ is appreciably smaller than 1 m/s. Further explanation is included in the next section, and more details can be found in Hannesdóttir & Kelly (2019).

² The choice of turbine was due to the supporting project applying the Rødsand II wind farm (e.g. Nygaard & Hansen, 2016).

and loads occur during normal operation (Hannesdóttir *et al.*, 2019), and ramps have relatively smaller effect on operation at speeds above V_{rated} because the blades have already pitched; thus we exclude ramp cases where the starting speed is above V_{rated} or where the ramp-end speed is above V_{cut} . The effect of this can be seen in [Figure 1](#); while the frequency of occurrence is slightly reduced, the shapes of both $P(\Delta U)$ and $P(\Delta t)$ are essentially unaffected. We further note that both distributions (particularly the rise time) are better represented in log-space, with the distribution of ramp amplitude appearing to be log-normal.

Deleted: Figure 1

Similar to the ramp magnitude and duration, the distribution of acceleration is also seen more conveniently in logarithmic space; this is shown in [Figure 2](#). Unlike $P(\Delta U)$ and $P(\Delta t)$, the shape of the ramp-acceleration distribution $P(\Delta U/\Delta t)$ is affected by rejection of events which exceed cut-out turbine speed and start above rated speed. From [Figure 2](#), one can see the smallest accelerations being filtered out; those below 0.01 m/s^2 are roughly halved. These do not affect the turbine, since turbulent accelerations override the ramp for such small $\Delta U/\Delta t$; furthermore, the high-acceleration tail remains essentially unchanged by the filtering, as seen in the figure.

Deleted: Figure 2

Deleted: Figure 2

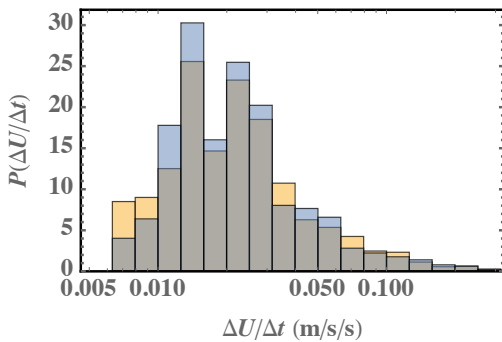


Figure 2: Probability density function of (mean) ramp accelerations, with logarithmic axis for $\Delta U/\Delta t$. Yellow: all events; blue/dark: excluding events which exceed cut-out or start above rated speed (as in [Figure 1](#)).

Deleted: Figure 1

The upper-rotor shear is also calculated, using the anemometer at 160 m along with that at 100 m. Although some ramps can be tilted in the streamwise direction (i.e., closer to the ground the ramp arrives later) and possess a transient shear associated with such tilt, this has a relatively small effect on the loads considered (Hannesdóttir *et al.*, 2017)³, and is beyond the scope of

³ The transient shear was shown in Hannesdóttir *et al.* (2017) to induce tower-top yaw (and possibly tilt) moments stronger than those induced by the design-load case prescription for transient shear (DLC1.5) in the IEC 61400-1 standard, but these magnitudes do not exceed

the current study. The shear (dU/dz) tends to be different before and after ramps, especially because most of these events are related to the passage of fronts. As mentioned above, the shear above the rotor is the most readily measured ‘external’ factor that can be used to diagnose downward entrainment of momentum and turbulent mixing into the farm. It is connected with atmospheric stability (Kelly *et al.*, 2014), and particularly influenced by the capping temperature inversion and thus the depth of the atmospheric boundary layer (Kelly *et al.*, 2019a). Distributions of the free-stream shear across the rotor (calculated as $U_{160m} - U_{60m}$) and the upper/above-rotor shear ($U_{160m} - U_{100m}$), both before and after ramp passage, are shown in Figure 3. We examine dU/dz instead of the shear exponent ($\alpha = d \ln U / d \ln z$) because dU/dz is directly involved in the momentum (entrainment) flux.⁴ Figure 3 also shows that the shear before the ramps is on average slightly larger than after the passage of a ramp event, and the upper-rotor dU/dz is smaller than the full-rotor shear. We note the shear before and after ramp events is unrelated, with an increase or decrease possible; the distribution of the difference between shear before and after (not shown) is centered around 0 but has a width comparable to the shear distributions themselves.

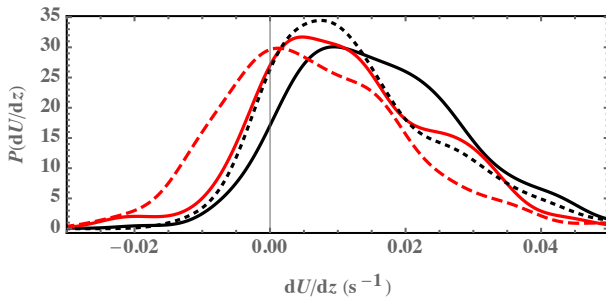


Figure 3: Probability distribution of shear in the periods before (black) and after (red) the detected ramp events. Solid denotes whole-rotor shear (as $U_{160m} - U_{60m}$); dotted/dashed denotes upper-rotor shear ($U_{160m} - U_{100m}$).

We do not directly address the strength of turbulent fluctuations (σ_u), i.e. the turbine response statistics related to variability in σ_u , because the ramp amplitudes and associated accelerations are generally large enough to be more significant than such background turbulence. This is supported by comparison of Figure 1, with distributions of σ_u shown in Figure 4, where each

the IEC extreme turbulence prescription (DLC1.3). Here we consider primarily the tower base fore-aft moment and blade root flap-wise bending moments, which for the observed ramps exceed DLC 1.3 in the 61400-1 (see also Hannesdóttir *et al.*, 2019).

⁴ We remind that dU/dz tends to be well-correlated with (at least monotonic in) the momentum flux (uw); the latter is typically parameterized as proportional to the former via first-order closure and mixing-length turbulence models (e.g. Panofsky & Dutton, 1984). Production of turbulent kinetic energy (TKE) is also proportional to dU/dz . The vertical (entrainment) flux of mean kinetic energy ($\sim \rho U^2/2$) can be nonlinear in the shear, but is yet more sensitive to dU/dz (see e.g. Ch. 5 of Wyngaard, 2010). Comparing with Kelly *et al.* (2014), and noting the logarithmic character of α , one can see these fluxes are not as directly related and are less sensitive to α . However, use of α for flux parameterizations can certainly be explored further.

Deleted: Figure 3

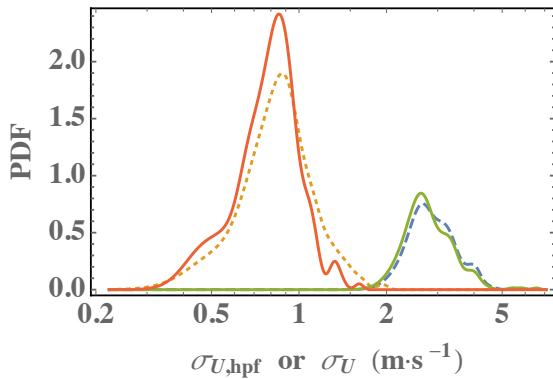
Deleted: Figure 3

Deleted: Figure 1

Deleted: Figure 4

σ_u ‘sample’ is calculated over the full (10-minute) period corresponding to a given ramp, and the probability density function (PDF) is the collection of all ramp-period samples. The portion of wind variation due to turbulence ($\sigma_{u,\text{hpf}}$), apart from the ramp, is also shown; this is calculated using a second-order high-pass Butterworth filter and filter frequency of $f_c = U/L_c$, where U is the 10-minute mean wind speed and $L_c = 2$ km as in Hannesdóttir and Kelly (2019). In Figure 4 one sees that the turbulence variation $\sigma_{u,\text{hpf}}$ is small compared to the ramp amplitudes ΔU and the σ_u associated with the ramps: the peak of $P(\sigma_{u,\text{hpf}})$ is at less than 1 m/s, whereas the peak of $P(\sigma_u)$ is ~ 2.5 m/s, and the peak of $P(\Delta U)$ is about 7 m/s with ΔU ranging from 3–15 m/s for the events considered. One also sees that rejection of the cases exceeding cut-out does not affect σ_u , though it is tied to a slight reduction in the turbulence strength $\sigma_{u,\text{hpf}}$. However, this is not significant, given that the ramps dominate the inflow to the turbines.

Deleted: Figure 4



145 Figure 4: Probability density functions of standard deviation of wind speed over all ramp periods. Dashed-blue is unfiltered σ_u over all ramps; dashed-orange is high-pass filtered turbulence ($\sigma_{u,\text{hpf}}$); solid green is σ_u excluding events exceeding V_{cut} or starting above V_{rated} ; solid red is $\sigma_{u,\text{hpf}}$ also excluding such events.

2.1 Joint statistics: practical and systematic event characterization

150 In order to investigate the relevant statistical space describing the inflow encountered by turbines during ramp events, we look deeper than the *marginal* distributions shown above. An initial picture of the ramp event probability space is given by Figure 5, which displays each ramp as a point $\{\Delta t, \Delta U\}$. Due to the consideration of V_{rated} and V_{cut} it is useful to include the wind speed; the figure also displays U_{before} for each ramp-like event found. Figure 5 indicates a concentration of most likely rise times and amplitudes around $\{\Delta t, \Delta U\} \approx \{7\text{--}8 \text{ m/s}, 300\text{--}400 \text{ s}\}$, which can also be seen in the joint distribution of Δt and ΔU

Deleted: Figure 5

Deleted: Figure 5

(not shown) and consistent with the distributions $P(\Delta t)$ and $P(\Delta U)$ shown earlier in Figure 1. Further, one can see that ramps are more often preceded by relatively strong winds; this is consistent with passage of cold fronts in mid-latitude areas.

160

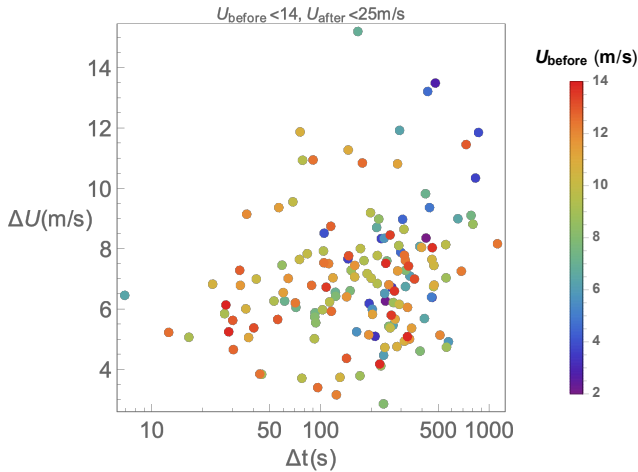


Figure 5: Ramp event occurrence, in terms of $\{\Delta t, \Delta U, U_{\text{before}}\}$.

For a given turbine, the rated speed is expected to have an impact on its response to ramps. So in Figure 6a we show the joint distribution of ramp amplitudes and pre-ramp wind speeds, $P(\Delta U, U_{\text{before}})$, as well as indicating which events cross V_{rated} .

165

Figure 6b shows the distributions of mean wind-speeds before and after ramp events. From this $P(\Delta U, U_{\text{before}})$ and Figure 1,

we note that the most likely ramp events with amplitudes below the peak of $P(\Delta U)$ tend to occur with initial speeds larger than what the peak of the simple marginal distribution $P(U_{\text{before}})$ would seem to imply; i.e. there is a joint trend where smaller ramp amplitudes tend to occur with larger pre-ramp wind speeds. One further sees in Figure 6a the number and distribution

170

of events which involve wind speed crossing V_{rated} , indicated by the yellow line; a fraction of ramps (~1/6) have $U_{\text{after}} < V_{\text{rated}}$. Figure 6a also indicates the small number of rejected events (~5%) exceeding turbine cut-out speed, which lay above the blue line.

Deleted: Figure 1

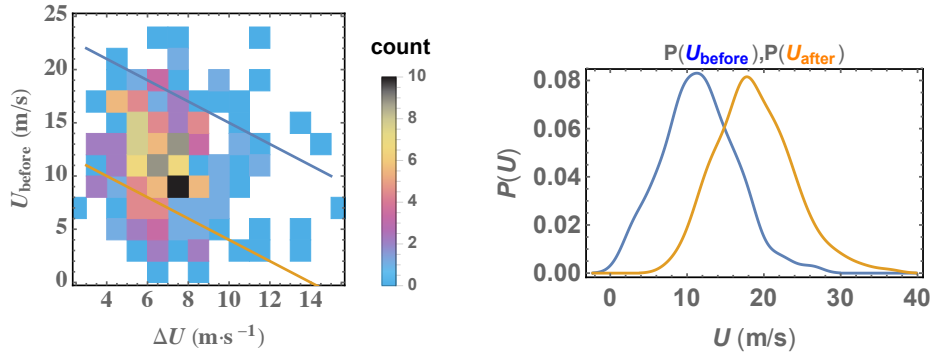
Deleted: Figure 6

Deleted: Figure 6

Deleted: Figure 1

Deleted: Figure 6

Deleted: Figure 6



180

Figure 6. Left: Joint distribution of ramp amplitude and speed before ramp; points above blue line are above cutout (rejected), and points below yellow line do not cross from below to above V_{rated} . Right: distribution of speed before and after ramp events.

As mentioned above, in previous related work with aeroelastic simulations, wind turbines have shown more sensitivity to ramp acceleration ($\Delta U/\Delta t$) than to ramp amplitude (ΔU). But aside from its contribution to $\Delta U/\Delta t$, the ramp amplitude can have primary significance for events which do not exceed V_{rated} (points falling below the yellow line in Figure 6), as we will see in the next section. The strongest ramp accelerations appear to be correlated with the wind speed before ramp passage; this is demonstrated by Figure 7, which displays $P(\Delta U/\Delta t, U_{\text{before}})$. For the largest bulk accelerations, one sees that $\ln(\Delta U/\Delta t)$ roughly follows U_{before} .

190

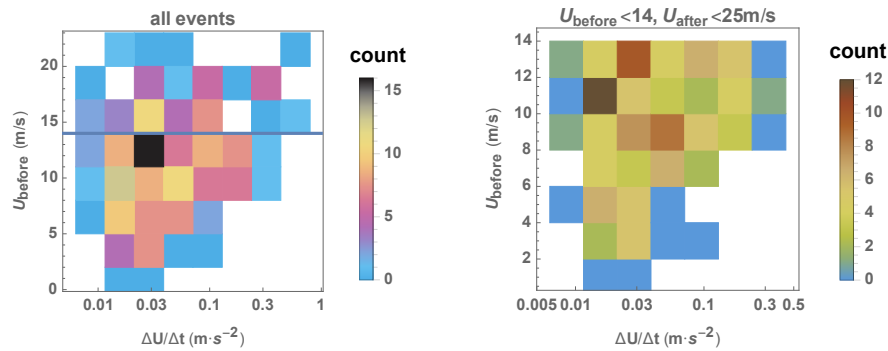


Figure 7: Distribution of accelerations per wind speed before ramp. Left: all events, where horizontal blue line shows lower limit of rejected events; right: events considered here.

Deleted: Figure 6

Deleted: Figure 7

Given the primary impact of ramp acceleration ($\Delta U/\Delta t$) on lone turbines and the influence of above-rotor shear on mixing within wind farms, we examine their joint behavior. [Figure 8](#) shows each event's acceleration and the upper-rotor shear after passage, as well as the pre-ramp speed. Recalling the essentially offshore conditions (again the ramps are from the west and the speed at 100 m height is unaffected by the thin strip of land between mast and coastline), the relatively small shear matches previous observations, with a moderately skewed distribution for α (Kelly *et al.*, 2014) and associated $P(\Delta U/\Delta z)$. The range of shear appears wider for the most commonly occurring accelerations ($\Delta U/\Delta t \sim 0.02\text{--}0.04 \text{ m/s}^2$)—particularly for events with lower speeds—though there is little evidence of shear correlating with the bulk ramp acceleration. For ‘stronger’ ramps, i.e. with the highest accelerations, the shear is weaker, which in part justifies use of neutral conditions in the simulations; e.g. for $\Delta U/\Delta t > 0.2 \text{ m/s}^2$, basically $|\Delta U/\Delta z|_{\text{upper}} < 0.01 \text{ s}^{-1}$. The character of $P(\Delta U/\Delta t, \Delta U/\Delta z, U_{\text{before}})$, evinced by [Figure 8](#), motivates our choice of event ensemble for simulations shown in the next section.

Deleted: Figure 8

Deleted: Figure 8

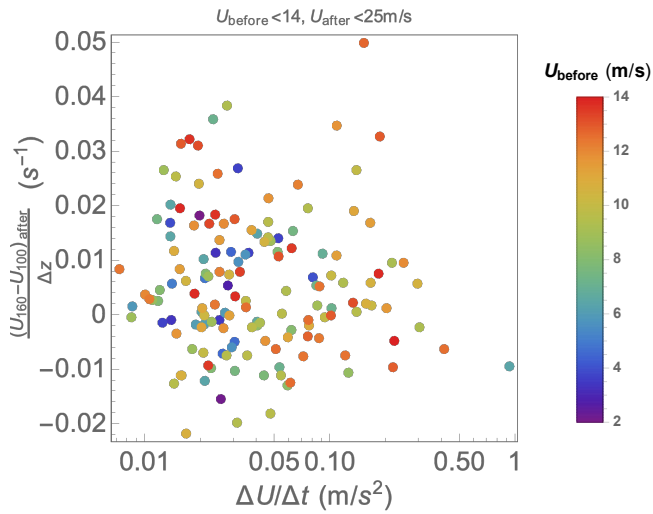


Figure 8: Detected ramp events: upper-level shear after event, ramp acceleration, and wind speed before ramp.

2.2 Ensemble of ramp events for coupled simulations

215 Due to the computational demands of the model chain used, an ensemble of 8 members was created based on the joint statistics presented in the previous section. Each ensemble member corresponds to one model-chain simulation. The model-chain starts with a constrained turbulence simulation, which employs the Mann-model (Mann, 1994, 1998, 2001); output from the constrained Mann-model (CMM) is used to drive the coupled LES and aeroelastic models, as detailed in the next section.

220 The ensemble members are chosen to cover the relevant load-driving parameters: the ramp acceleration, with the latter dictated by the ramp duration and amplitude; the pre-ramp hub-height wind speed (shown previously in [Figure 8](#)); and the above-rotor shear. Based on the marginal PDF of background turbulence strength $\sigma_{u,hpf}$ ([Figure 4](#)) and joint distributions of it with the other parameters (not shown), a single representative value for $\sigma_{u,hpf}$ was chosen. Since we are not investigating sensitivity to $\sigma_{u,hpf}$, and because it (and its effect) is small compared to ΔU , we choose a value equal to the observed mean, which is approximately equal to the mean within the $\{\Delta U/\Delta t, \Delta U_{upper}/\Delta z\}$ space considered. Two values of ΔU and several values
225 of Δt , corresponding to three significant accelerations $\Delta U/\Delta t \geq 0.05 \text{ m/s}^2$, were chosen; this was done in such a way as to [1] cover the most populated part of the statistical space and [2] facilitate estimation of the sensitivity of turbine response to wind speed ramps, particularly via $\Delta U/\Delta t$.

230 Similarly, three values of pre-ramp shear were chosen, to investigate dependence of ramp propagation through the farm, and sensitivity. A representative value of the turbulence length scale L_{MM} , is also needed for constrained turbulence simulations. Since L_{MM} is not expected to be a significant driver of loads due to the dominance of the ramps (it has less influence than $\sigma_{u,hpf}$, as shown in e.g. Dimitrov *et al.*, 2018), it was calculated as $L_{MM} = \sigma_{u,hpf}/(dU_{before}/dz)_{upper}$ following Kelly (2019)⁵.

[Table 1](#) shows the ensemble-members and chosen characteristics.

Deleted: Figure 8

Deleted: Figure 4

Deleted: Table 1

⁵In the zero-shear cases, $L_{MM}=200 \text{ m}$ was assigned based on the spectral length scales diagnosed in Kelly (2019) from these same data, under the condition $dU/dz \approx 0$

Table 1. Ensemble of ramp events: parameters chosen.

Case	$(dU/dz)_{\text{before}}$	ΔU_{ramp}	Δt	$\Delta U_{\text{ramp}}/\Delta t$	U_{before}	$\sigma_{u,\text{hpf}}$	L_{MM}
1	0.02 s ⁻¹	9 m/s	90 s	0.1 m/s ²	10 m/s	0.9 m/s	45 m
2	0.02 s ⁻¹	6 m/s	60 s	0.1 m/s ²	10 m/s	"	45 m
3	0 s ⁻¹	9 m/s	90 s	0.1 m/s ²	10 m/s	"	200 m
4	0.02 s ⁻¹	9 m/s	180 s	0.05 m/s ²	10 m/s	"	45 m
5	0 s ⁻¹	9 m/s	180 s	0.05 m/s ²	10 m/s	"	200 m
6	0.01 s ⁻¹	6 m/s	30 s	0.2 m/s ²	10 m/s	"	90 m
7	0 s ⁻¹	6 m/s	240 s	0.025 m/s ²	6 m/s	"	200 m
8	0.01 s ⁻¹	6 m/s	120 s	0.05 m/s ²	6 m/s	"	90 m

240

3 Constrained turbulence simulation with ramps

The ensemble members defined according to the specified parameters $\{\Delta U, \Delta t, (\Delta U_{\text{before}}/\Delta z)_{\text{upper}}, U_{\text{before}}, \sigma_{u,\text{hpf}}, L_{\text{MM}}\}$, shown in [Table 1](#), were each used to generate a constrained turbulence simulation with Mann-model background turbulence (Dimitrov & Natarajan, 2017)—as done by Hannesdóttir *et al.* (2019) for wind ramps. The duration of the simulations was 1550 s, producing a three-dimensional turbulence “box” of atmospheric turbulence velocity field including the ramp for each member. The ramps begin 800 s after simulation start to ensure fully developed flow through the farm without initial transients, and are of sufficient duration to include both the ramp and at least 500 s of high-wind turbulence after the ramp (as in the observations).

245

Deleted: Table 1

The simulations are stochastic, including turbulence generated by the Mann model for atmospheric turbulence (c.f. Mann, 1994,1998; IEC 61400-1, 2019), so the resulting ramps simulated by LES are not exactly as specified in [Table 1](#). The superposed turbulence with the ramps can cause deviations in wind speed, which may either change the duration or amplitude of an event. This is shown in [Table 2](#), which presents the diagnosed ramp parameters from the ensemble of simulations. For example, the ramps in cases 2 and 4 are prolonged, while case 5 and 7 have shortened ramps compared to the durations chosen. The resultant accelerations are affected, and diagnosed in two ways: the mean $\langle \partial u / \partial t \rangle$ of the accelerations calculated via first-order finite difference over each ramp duration (with ∂t corresponding to 0.04 s), and the bulk ramp value $\Delta U / \Delta t$ (again where $\Delta U = \langle U_{\text{after}} \rangle - \langle U_{\text{before}} \rangle$ and Δt is ramp duration). The table includes each, with

250

Deleted: Table 1

Deleted: Table 2

$\langle \partial u / \partial t \rangle$ reflecting the nonlinear stochastic aspect and effect on the simulated ensemble. Case 2 has a reduced acceleration, while cases 5 and 7 have larger accelerations than prescribed. The bulk acceleration $\Delta U / \Delta t$ is closer to prescribed accelerations than the average of ‘instantaneous’ accelerations $\langle \partial u / \partial t \rangle$, because the latter includes more effects of simulated turbulence. Further, because the latter may also be sensitive to temporal resolution of the data⁶, we refer hereafter to the bulk value $\Delta U / \Delta t$ as the diagnosed ramp acceleration; because we have prescribed the before- and after-ramp speeds and simulated well beyond 10 minutes duration, this bulk acceleration is also equivalent to that found via the detection algorithm used to identify the ramp events in the original measured data.

270 **Table 2. Diagnosed parameters from ensemble of constrained (CMM) simulations; ramp acceleration is shown both as average acceleration over the ramp event ($\langle \partial u / \partial t \rangle$ including turbulence), and based on ratio of $[(U_{\text{after}}) - (U_{\text{before}})]$ to ramp duration Δt .**

Case	ΔU	Δt	$\langle \partial u / \partial t \rangle$	$\Delta U / \Delta t$	U_{before}	$\sigma_{u,\text{hpf}}(\text{before})$
1	10.4 m/s	90 s	0.12 m/s ²	0.12 m/s ²	11.9 m/s	0.83 m/s
2	7.2 m/s	~120 s	0.06 m/s ²	0.06 m/s ²	12.3 m/s	0.93 m/s
3	9.2 m/s	90 s	0.07 m/s ²	0.10 m/s ²	10.0 m/s	1.00 m/s
4	10.2 m/s	240 s	0.04 m/s ²	0.04 m/s ²	11.8 m/s	0.91 m/s
5	9.8 m/s	120 s	0.06 m/s ²	0.08 m/s ²	9.7 m/s	0.65 m/s
6	6.3 m/s	30 s	0.28 m/s ²	0.21 m/s ²	11.0 m/s	0.75 m/s
7	6.1 m/s	60 s	(0.07) m/s ²	0.10 m/s ²	5.7 m/s	0.74 m/s
8	6.6 m/s	120 s	(0.07) m/s ²	0.05 m/s ²	6.9 m/s	0.81 m/s

Note that although there are minor deviations in several cases from the initial ensemble-member choices, this is permissible, given that the cases with deviations are still representative of the joint space—still falling within the populated regions shown in Figure 8, and allowing estimation of sensitivities as originally planned. The ramps from the CMM simulations are shown in Figure 9, where these timeseries correspond to the speeds at $\{y,z\}$ of the rotor center.

Deleted: Figure 8

Deleted: Figure 9

⁶ The Mann-model output velocity components and consequent accelerations follow the Kolmogorov spectrum, without the high-frequency noise characteristic of measurements. However, given their $f^{-2/3}$ (and thus $\delta t^{2/3}$) dependence, the acceleration still depends slightly on output time step.

3.1 Stand-alone aeroelastic calculations driven by the turbulent ramp simulations

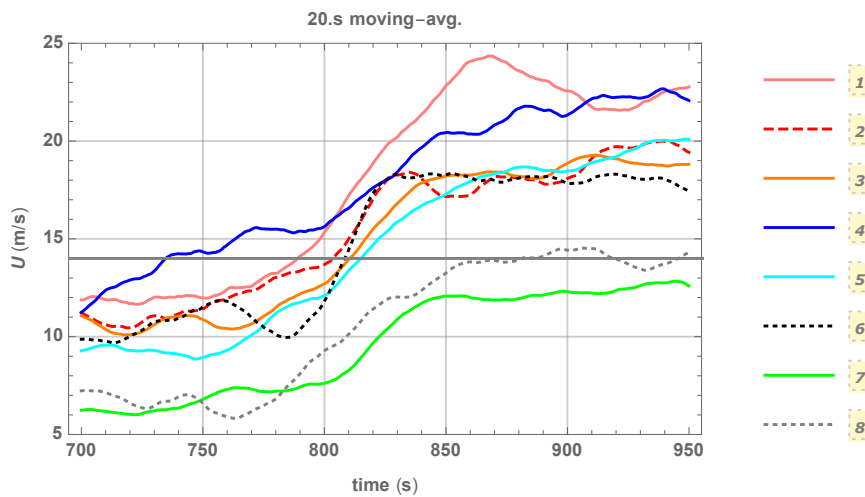
The three-dimensional turbulence timeseries for each case were input into the stand-alone aeroelastic code Flex5 (Øye, 1996). The turbine model and controller employed in Flex5 correspond to the NM80 (Aagard Madsen *et al.*, 2010), as mentioned previously; this turbine has a rotor diameter $D = 80$ m and hub height $z_{\text{hub}} = 80$ m. The wind speed at hub height in Flex5 is identical to the input speed, as displayed in Figure 9 for the ramp portion of all cases. The plotted timeseries is smoothed using a 20 s moving average, to show the wind speed ‘experienced’ by a single simulated turbine—since it reacts like a low-pass filter with characteristic timescale of ~ 20 s or longer (e.g. Frandsen *et al.*, 2008). As prescribed in Table 1, from Figure 9, (and Table 2) one can note that cases 7–8 start at a lower wind speed and are not designed to exceed rated wind speed, though case 8 does momentarily exceed V_{rated} ; however, we note that $\langle U_{\text{after}} \rangle$ is 11.8 and 13.5 m/s, respectively, for these two cases. The turbine power becomes constant during the ramp in cases 1–6, with maximum loads tending to occur during the ramp (shown further below).

Deleted: Figure 9

Deleted: Table 1

Deleted: Figure 9

Deleted: Table 2

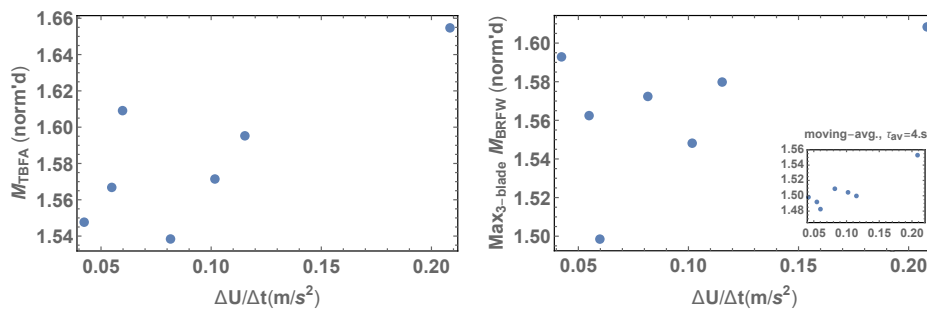


295 Figure 9. Wind speed at hub height, for ramps in the stochastic constrained Mann-model simulations (CMM). Horizontal gray line indicates rated wind speed. Ensemble member (case) numbers indicated at right.

From the stand-alone Flex5 simulations, we note the trend of ramp-acceleration dominating the maximum blade root flap-wise bending moments, as well as the maximum tower-base fore-aft moments (hereafter these two loads are denoted symbolically by M_{brfw} and M_{tbfa} respectively). This is shown in Figure 10, which displays $\max\{M_{\text{brfw}}\}$ and $\max\{M_{\text{tbfa}}\}$ versus ramp

Deleted: Figure 10

305 acceleration for the 7 cases where the speed rises above V_{rated} . The acceleration $\Delta U/\Delta t$ is calculated at rotor center (hub
 height); the maximum from the three blades is used for the blade root-bending moment shown, which was calculated
 integrating to the first radial computation point in Flex5 (1.24 m from hub). There is some scatter in the results shown due to
 the spatial variation of turbulence, the shear, and blade positions during the ramp, since $\Delta U/\Delta t$ was calculated at rotor center.
 However, a trend is evident in the plots, and sensitivity of M_{brfw} and M_{tbfa} to bulk ramp acceleration can be estimated. For the
 310 maximum tower-base fore-aft moment, the sensitivity is roughly 3% of M_{tbfa} per $0.1 \text{ m}\cdot\text{s}^{-2}$ acceleration due to the ramp, and
 the sensitivity for maximal flap-wise root bending moment M_{brfw} is approximately the same: 3% per $0.1 \text{ m}\cdot\text{s}^{-2}$ acceleration.
 The figure also includes an inset plot where the load was calculated using an averaging time of 4 seconds, which removes
 scatter and makes the sensitivity yet clearer—with the same slope on this plot as without averaging; it gives the same
 sensitivity, though the M_{brfw} is simply shifted downward by several percent. In addition to the 3% increase per $0.1 \text{ m}\cdot\text{s}^{-2}$ of
 315 $\Delta U/\Delta t$, there is an increase of $\sim 45\%$ in M_{brfw} and $\sim 50\%$ in M_{tbfa} for ramp-affected loads, regardless of the ramp amplitude.



320 **Figure 10.** Tower-base fore-aft moment (left) and blade root flap-wise bending moment (right) versus ramp acceleration, for ramp cases exceeding rated speed, from constrained Mann-turbulence (“stand-alone”) simulations. Loads normalized by mean values outside of ramp events, over all cases. Right inset same plot but with averaging time of $\tau_{\text{av}} = 100t_s = 4 \text{ s}$.

4 Coupled large-eddy simulation (LES) of ramps through a simple farm

4.1 Large-eddy simulation code

Large-eddy simulations (LES) have been performed using EllipSys3D, which is parallelized Fortran code developed at DTU
 and the former Riso National Laboratory (Michelsen, 1992; Sørensen, 1995). EllipSys3D solves the discretized incompressible
 325 Navier-Stokes equations in general curvilinear coordinates, using a block-structured finite volume approach. Employing LES
 implies that resolved (large-scale) motions are solved directly in time and space, while motions and stresses at unresolved
 (small) turbulent scales are parameterized using a subgrid-scale (SGS) model. The resolution is usually limited by the grid size
 of the domain, and in the present case is twice the grid spacing, with the ‘mixed-scale’ SGS parameterization of Ta Phuoc *et*

330 *al.* (1994) used here. Additionally, body forces are included in the equations and utilized to model the turbines and the turbulent inflow including ramps, as explained below. See Sørensen *et al.* (2015) for a detailed description of the entire numerical setup.

4.1.1 Actuator-line modelling of turbines and aero-elastic coupling

335 The turbines are modelled using the actuator line method as developed by Sørensen and Shen (2002). The actuator line method consists of imposing body forces along rotating lines in the computational domain, which corresponds to the aerodynamic loads on the rotor blades. The body forces are determined through a full coupling to the aero-elastic tool Flex5 (Øye, 1996). Flex5 computes both the aforementioned forces, as well as blade deflections, based on the instantaneous flow solution along the rotating lines. Forces and deflections are transferred back to the flow solver. Flex5 also includes a realistic wind turbine controller, which is particularly important for the current simulations, as the operational regime changes from below rated to above rated as the ramps propagate through the wind farm.

340

4.1.2 Embedded Body-force implementation to drive the LES

345 In LES the flow is typically driven via boundary conditions. However, modelling ramps propagating through a domain (which includes wind turbines) is a particularly challenging task: it violates a fundamental assumption, conservation of mass. The sudden increase in momentum—particularly the large velocity gradient defining the ramp—can result in an unphysical acceleration through the simulation domain, due to enforcement of the continuity equation by the pressure solver. Therefore such persistent transient features *cannot be applied simply on the inlet boundary*. However, use of body forces internally within the numerical domain facilitates simulation of such flows. The turbulent inflow including the ramp is introduced via body forces (Gilling *et al.*, 2009), imposed in a plane upstream of the turbine(s) as in Troldborg (2009). If modelling a single turbine, the plane is often limited in extent. However, as shown in Andersen (2014), limiting the spatial extent of the turbulence plane can affect the overall mixing in large wind farms.

355 Here we apply the body-force method with several adaptations, to mitigate the flow degradation within the wind farm and avoid numerical blockage, which could otherwise occur as an imposed ramp propagates through the simulated domain. Flow degradation is prevented by ensuring that the imposed ‘inflow’ covers a large enough area to maintain the ramp throughout the wind farm; i.e., large-scale compensation for the ramp-induced divergence (via the pressure solver) is kept outside the central area of interest, such that it has negligible effect within the simulated wind farm. Additionally, the forcing is spatially tapered with a half-gaussian profile (with scale $1.75D$ in the lateral and $1D$ in the vertical) to reduce anomalous shear, which would otherwise introduce unintended mixing. Artificial numerical blockage of the imposed ramp inflow is reduced by utilizing a domain extent of $L_y = 7D$, $L_z = 50D$ that is much larger than the size of the body-forcing area, which has a core area of $4D \times 2.625D$; this has the additional advantage of distributing any divergence-related compensation over a large volume

360

such that the induced velocities are small compared to the background speed. The full details of the methodology [are](#) presented in Andersen *et al.* (2021).

Deleted: is

4.1.3 Numerical setup

365 The numerical domain used for the simulations is 5440m x 560m x 4000m in the streamwise, lateral and vertical directions, respectively. The domain is uniform in the center (where the turbines are placed) and stretched towards the boundaries. The resolution in the center region is 4 m in each direction. There are 1280 x 80 x 64 points in each direction, corresponding to a total of about 6 million cells. This would appear to be relatively coarse for actuator line simulations, but the wake is predominantly governed by C_T (van der Laan *et al.*, 2020) and the current resolution gives rise to a difference in C_T of only 370 ~1% (Hodgson *et al.*, 2021).

The flow has been initialized with a power-law wind profile (constant shear exponent), which at hub height corresponds to the vertical velocity gradient given in [Table 1](#). This is also used as the inflow boundary condition. The simulated wind farm contains nine turbines separated in the streamwise direction, by a spacing of seven rotor-diameters (560 m). There are periodic 375 boundary conditions, so in effect the farm can be considered infinite in the crosswind direction, with a lateral spacing of roughly nine rotor diameters (~700 m) due to the lateral size of the domain. The layout of the simulated wind farm can be seen in the next section ([Figure 13](#)), where flow is first visualized for two cases.

Deleted: Table 1

Deleted: Figure 13

4.2 Results

380 The constrained Mann-model turbulence fields (discussed in Section 3) were used to drive LES of each member in the ensemble of eight cases, including aero-elastic calculations for the nine turbines of the simulated farm via the Flex5 coupling.

4.2.1 Analyses of cases and comparison with stand-alone simulations

We start by considering the results from the large-eddy simulations for the first (upwind) turbine. This is done to evaluate the parameter space represented by the cases simulated with LES, in comparison to the stand-alone Flex5 simulations discussed in the previous section; this is because the forcing technique is expected to potentially modify the ramp characteristics (but not substantially change the ensemble's utility in representing the parameter space shown previously in [Figure 5](#)). To check the ramps themselves, [Figure 11](#) shows the wind speeds at hub-height for the first turbine; these are taken from the Flex5 channel 390 which reports speed at a distance of $R=40m$ upwind.

Deleted: Figure 5

Deleted: Figure 11

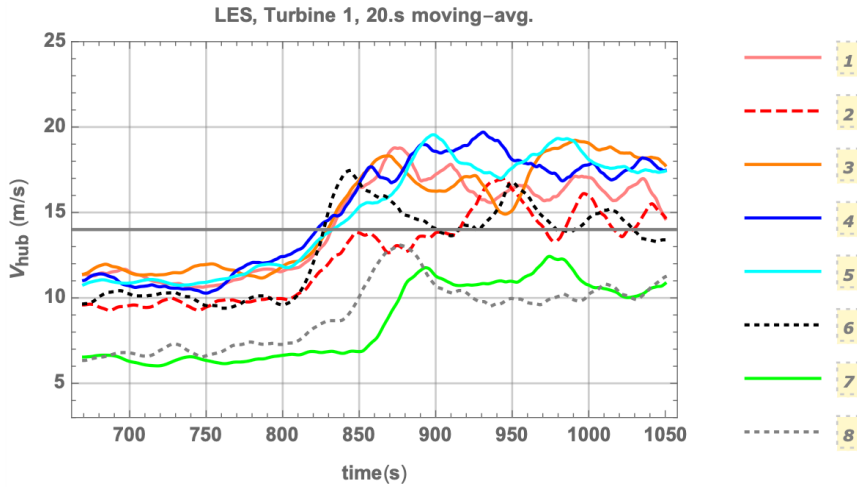


Figure 11. Wind speed ramps from LES driven by Mann-model simulation, for upwind/first turbine. (Compare to stand-alone Flex5 simulations driven by Mann-model, shown in [Figure 9](#))

Deleted: Figure 9

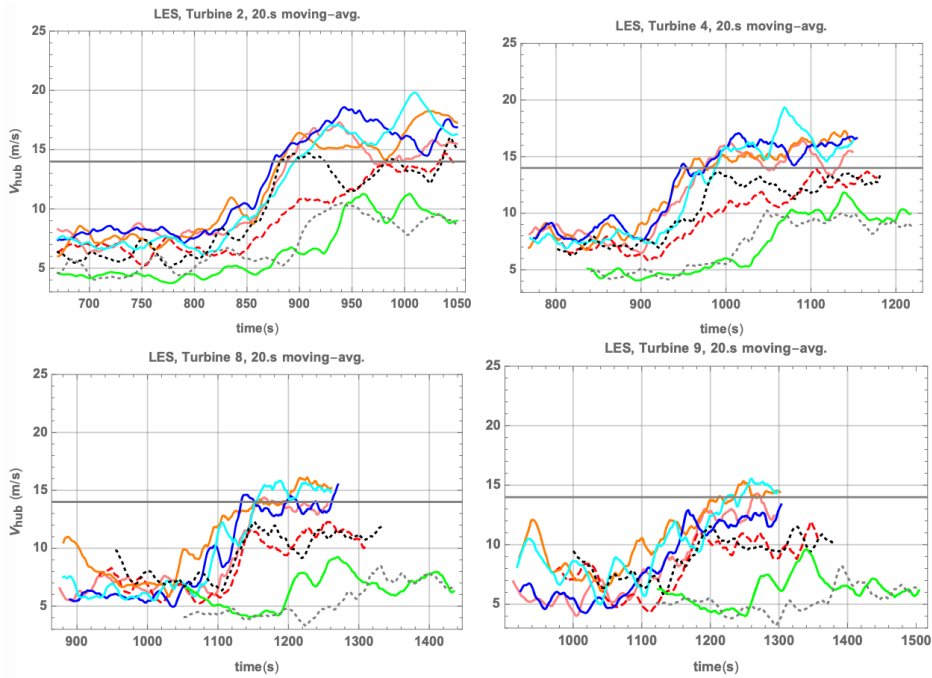
400 In comparison with [Figure 9](#) for the stand-alone Flex5-model driven by constrained Mann-model turbulence including the ramps, one can see in [Figure 11](#), for the LES that for most cases the ramp amplitudes are somewhat damped (~10–30%), and some of the cases have $\Delta U/\Delta t$ ‘swapped’. However, the ramp accelerations are not appreciably affected: essentially the same space of $\Delta U/\Delta t$ is covered by *the ensemble*, both as planned and simulated in the stand-alone runs. For the downwind (‘waked’) turbines, [Figure 12](#), shows the wind speed ramps in the LES at turbines 2, 4, 8, and 9.

Deleted: Figure 9

Deleted: Figure 11

Deleted: Figure 12

405



410 **Figure 12.** Wind speed ramps at hub-height in LES driven by constrained Mann-model simulation. Upper-left: at turbine 2; upper-
 415 right: at 4th turbine; lower-left: at 8th turbine; lower-right: at 9th turbine. Colour/case legend follows [Figure 11](#).

The progressive damping of wind speeds at increased distances within the simulated farm is evident in [Figure 12](#), which shows
 415 the wind speeds at all turbines (for more plots see also Fig. 27/Appendix of Kelly *et al.*, 2019b). The figure also demonstrates
 that as the speeds diminish due to the wake effect, for various cases the wind speed does not exceed V_{rated} in parts of the wind
 farm's interior. Higher loads within the farm are expected when this happens, such as for case 4 between turbines 8 and 9
 (blue line in bottom plots of [Figure 12](#)). The ramps remain relatively intact, particularly for higher wind speeds. The maximum
 ramp accelerations simply persist for shorter times due to wake turbulence; i.e., 'wiggles are added' to the timeseries $U(t)$ as a
 420 ramp progresses through the farm.

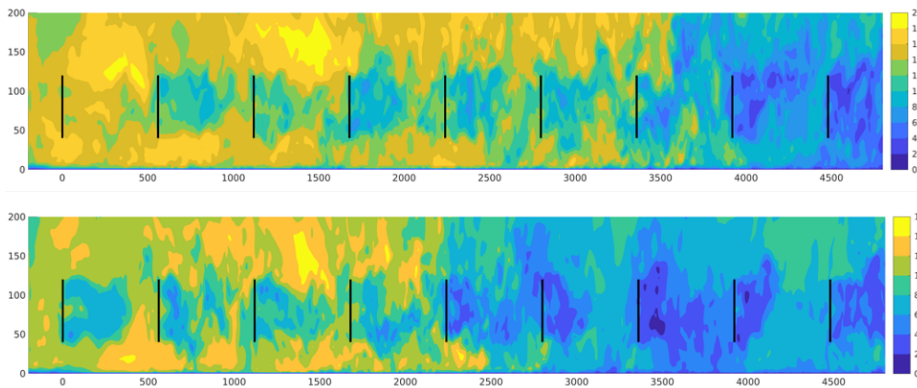
Deleted: Figure 11

Deleted: Figure 12

Deleted: Figure 12

425 The behaviour of ramp events propagating through a wind farm is illustrated in [Figure 13](#), which displays a snapshot of the
wind speed field in the farm simulated by LES; cases 6 and 7 are shown at the same time after simulation start. In the figure
it is evident that the ramp has not travelled as far through the farm in case 7 as in case 6 due to the latter case having higher
speeds (note the colour scale is different in the two plots); in case 7 the mean flow at hub height does not exceed V_{rated} within
the wind farm. In case 6 the flow at hub height ceases to exceed V_{rated} between turbines 3 and 4, causing the ramp-affected
430 loads to be different downwind of turbine 3; there the loads become a bit more consistently higher after the ramp, compared
to turbine 3.

Deleted: Figure 13

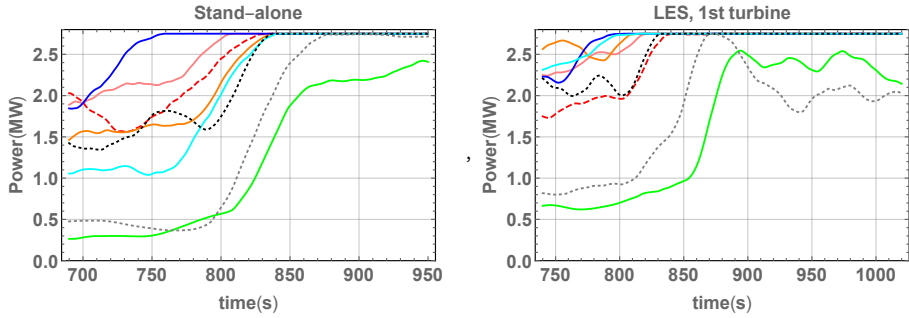


435 **Figure 13.** Cross-section of wind fields from LES, taken along turbine center ($y=0$): cases 6 (top) and 7 (bottom), shown at the same
time after start. Vertical axis is height above the surface [m], horizontal axis is streamwise position [m], and flow travels from left
to right. Black lines indicate turbine rotor positions, and color is streamwise wind velocity component in m s^{-1} .

The predicted power tracks the wind speed up to rated power. This is shown for both the stand-alone (CMM/Flex5) and
440 upwind turbine of the large-eddy simulation model-chain in [Figure 14](#). Similar simple behavior occurs for all downwind
turbines in the LES, and is thus not investigated further in this work.⁷

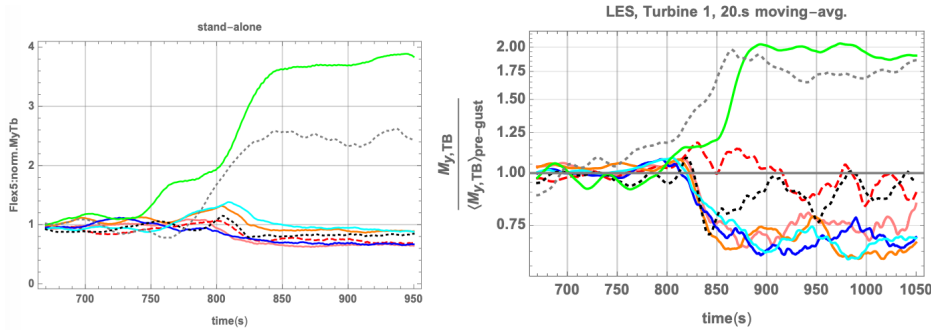
Deleted: Figure 14

⁷ The power for all downwind turbines can be seen in the Appendix of the technical report by Kelly *et al.* (2019b).



445 Figure 14. Power output through all simulated ramp events of ensemble. Left: stand-alone Flex5 simulations driven by CMM. Right: CMM-LES-Flex5 simulated power, for first (upwind) turbine.

450 Figure 15 shows tower-base fore-aft moments over passage of the ramps for both the stand-alone CMM/Flex5 simulations and first turbine in the large-eddy simulations, normalized by the respective pre-ramp values for each case. Figure 16 further shows these dimensionless loads for two downwind turbines (numbers 2 and 5) from the LES.

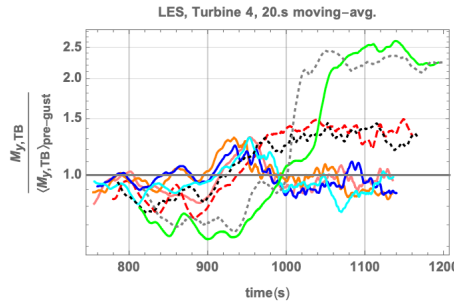
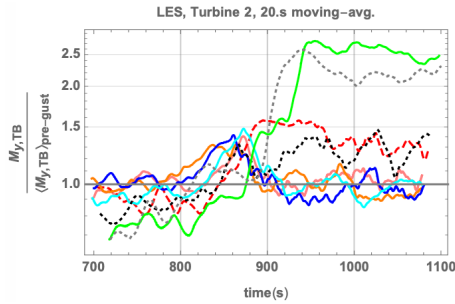


455 Figure 15. Tower-base fore-aft moment M_{tbf_a} , normalized by pre-ramp mean values, for all 8 ramp cases (colors same as in Figure 14). Left: stand-alone Mann-model/Flex5 simulation; right: coupled LES, first (upwind) turbine.

Deleted: Figure 15

Deleted: Figure 16

Deleted: Figure 11



460

Figure 16. Tower-base fore-aft moment M_{tbfa} normalized by pre-ramp mean values (as in Figure 15b), for 2nd and 4th turbines in LES of wind farm. Colour/case legend follows Figure 11, 12, 14-15.

Deleted: Figure 15

Deleted: Figure 11

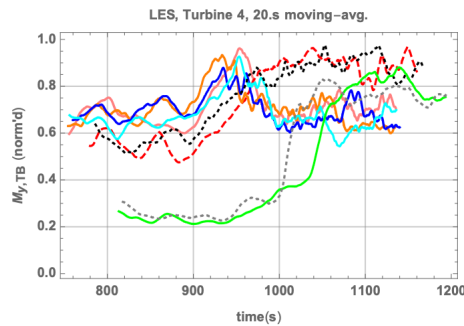
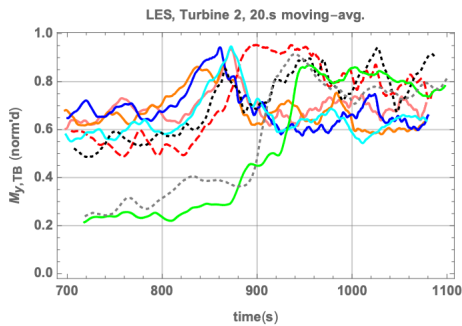
Deleted: Figure 15

Deleted: Figure 16

From Figure 15- Figure 16 we note several trends. The tower-base loads, relative to their pre-ramp values, exhibit two simple behaviors: for cases in which rated speed is exceeded, the maximum load occurs during the ramp before V_{rated} is reached; in cases not exceeding V_{rated} the maximum loads simply correspond to maximum wind speeds attained. For the turbines *not* in the wake of others (i.e., stand-alone or 1st row of LES), in cases where U exceeds V_{rated} the peak loads are essentially the same per given acceleration. For cases *not* attaining rated power, the LES loads are lower due to lower overall mean wind speed. In terms of physical (not relative) tower-base loads, ramps not exceeding rated speed have lower overall loads; this is shown in Figure 17.

465

470



Deleted: Figure 17

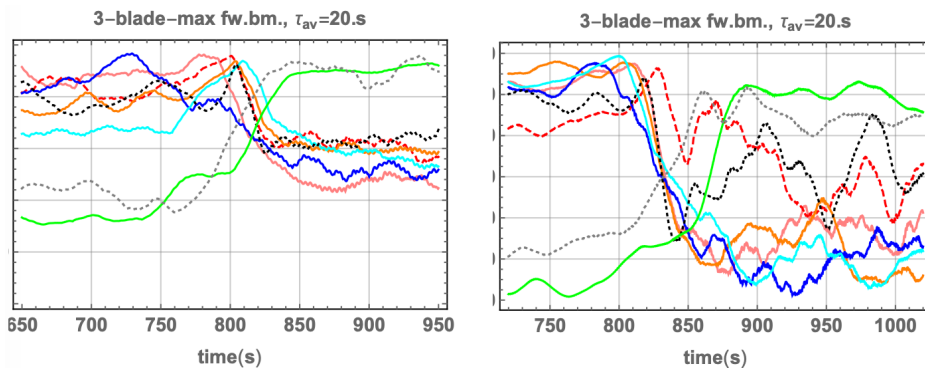
Figure 17. "Raw" tower-base fore-aft moment M_{tbfa} for turbines 2 and 4; note for commercial/proprietary reasons, all values have been non-dimensionalized by a single constant. Colour/case legend as in Figure 11, 12, 14-16, 18-19, 22-23.

Deleted: Figure 11

Figure 18 shows the largest of the 3 blades flap-wise root bending moments for each case; these exhibit similar behavior as the tower base fore-aft moments considered above. Again, some differences exist between the stand-alone CMM/Flex5 simulations and the coupled LES due to the slightly weaker mean wind speeds in the LES, but the peak loads for cases crossing V_{rated} are notably similar per ramp acceleration. The blades' flap-wise loads for downwind, i.e., waked, turbines exhibit the same behaviour (not shown; see Fig. 29 of Kelly *et al.*, 2019b). Figure 19 further displays the *relative* flap-wise bending moments, i.e., M_{brfw} normalized by the respective pre-ramp mean values (again for the stand-alone and unwaked LES results); it more clearly demonstrates the similarities between cases exceeding rated speed, similar to the peak tower base loads M_{tbfa} .

Deleted: Figure 18

Deleted: Figure 19



490 Figure 18. Maximum flap-wise blade root bending moment M_{brfw} over all 3 blades. Left: stand-alone Flex5 simulations driven by constrained Mann-model (CMM). Right: coupled LES outputs, for first (upwind) turbine. Dimensional results shown on same axes; values hidden to protect proprietary information. Colour/case legend as in Figure 11, 12, 14-17, 19, 22-23.

Deleted: Figure 11

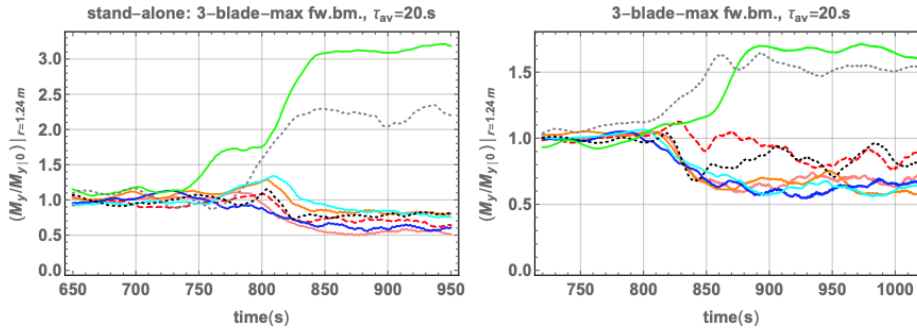
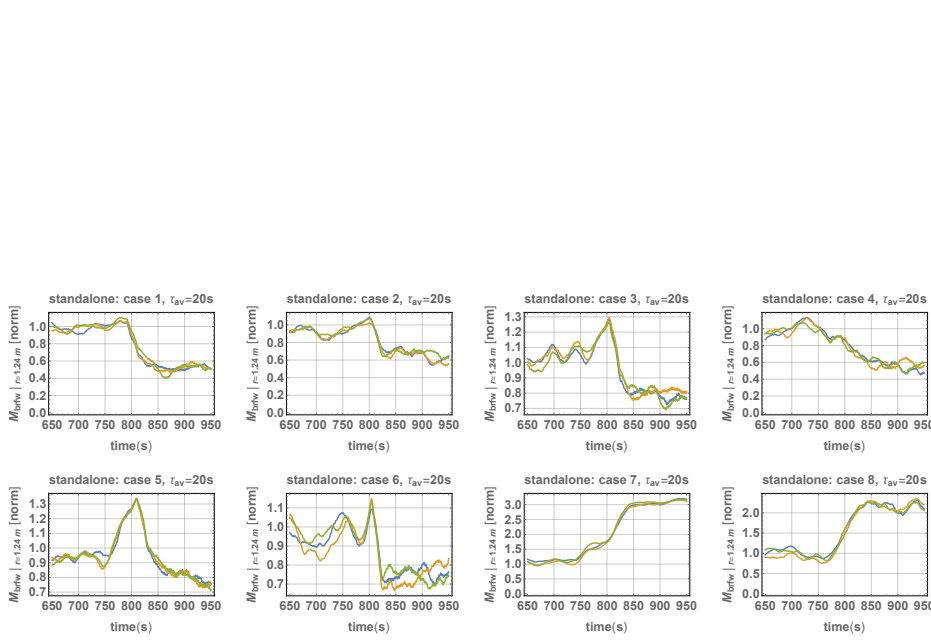


Figure 19. Flap-wise root bending moment M_{brfw} , maximum of 3 blades; normalized by pre-ramp values. Left: stand-alone CMM/Flex5 simulations. Right: coupled LES outputs, for *first* (upwind) turbine. Colour legend as in Figure 11, 12, 14-18, 22-23.

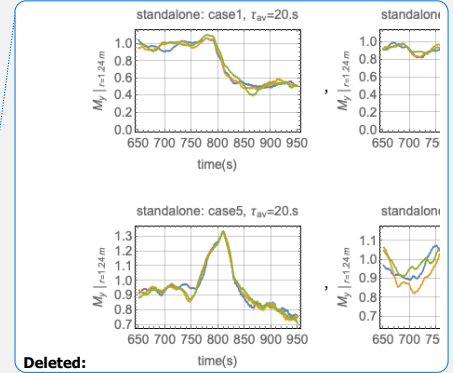
Deleted: Figure 11

The behavior of ramp-affected M_{brfw} does not vary much from blade to blade in the stand-alone simulations ($<3\%$); this is shown in Figure 20, and such variation is even smaller for the corresponding (upwind) turbines in the LES (not shown, see Fig. 4.9 of Kelly *et al.*, 2019b). For the peak loads, including those which are ramp-induced, the same behaviour is exhibited by both the LES and stand-alone model-chains, including the waked turbines in the LES: peaks for ramps exceeding V_{rated} occur during the ramp, and are dependent upon the ramp-associated $\Delta U/\Delta t$, while load peaks for weaker ramp events (not exceeding rated speed) are determined more by the maximum wind speed. In general, the behavior of both dimensional and normalized loads seen above for single or upwind turbines is also exhibited for downwind turbines in the LES; the blade-root and tower-base loads depend primarily upon the ramp acceleration, for the cases in which rated power is achieved during the ramp event.

Deleted: Figure 20



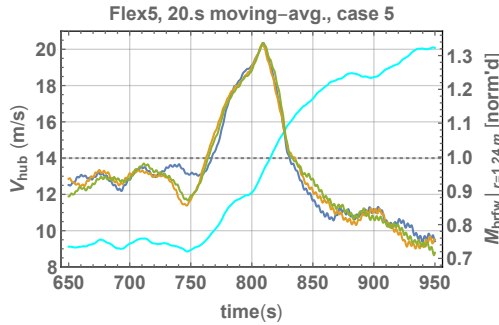
515 **Figure 20.** Stand-alone CMM/Flex5 simulations: normalized blade root flap-wise bending moment $[M_{brflw}]$ near base ($r=1.24m$) for each blade (blue/gold/green); loads are normalized by respective pre-ramp mean value.



Deleted: (4.8)

To better illustrate the loads behavior with ramp passage, [Figure 21](#) shows both the hub-height wind speed and normalized flap-wise root bending moment for case 5, on the same plot. In the figure one can see M_{brflw} (normalized by its pre-ramp mean value) reaches its maximum as the ramp crosses rated wind speed (14 m/s, denoted by dotted line), and becomes smaller afterwards as the turbine pitches the blades (goes into rated operation); the mean bending moment across the ramp can thus actually be lower than the pre-ramp mean bending moment in some cases.

520



525 **Figure 21.** Stand-alone CMM/Flex5 simulation for case 5: hub-height wind speed (cyan), along with blade root flap-wise bending moment $[M_{brflw}]$ near base ($r=1.24m$) for each blade (blue/gold/green); loads are normalized by respective pre-ramp mean value.

530 Maxima of M_{brfw} are shown versus bulk ramp accelerations in [Figure 222122](#), for turbines 3 and 8 in the coupled LES. The bulk accelerations are calculated directly using the before-after wind speed difference ΔU divided by the ramp's rise time Δt . We remind that the accelerations (and to a lesser extent the loads) obtained can depend on the averaging time, particularly in the stand-alone (CMM-Flex5) simulations. From [Figure 222122](#), one can see the loads following proportionally to $\Delta U/\Delta t$, particularly for turbine 3. Further downwind, where the ramps begin failing to exceed rated power, the wakes can add noise to this picture, as demonstrated for turbine 8 in the figure. However, in the coupled LES the *sensitivity* of loads to acceleration (slope of the plots in the figure) remains relatively constant progressing into the farm, though we note this corresponds to an increase as percentage of the loads. As the post-ramp speed begins to not exceed V_{rated} deeper into the farm, then (wake) turbulence can tend to cause the highest loads, instead of ramp accelerations. The sensitivity of the flap-wise blade root bending moments and the tower-base fore-aft moments in the LES model-chain is essentially equal to that found in the stand-alone simulations: again $\sim 3\%$ of M_{brfw} or M_{tbfa} per $0.1 \text{ m}\cdot\text{s}^{-2}$ of $\Delta U/\Delta t$, though it varies, as is shown below.

535

540

Deleted: Figure 2122

Deleted: Figure 2122

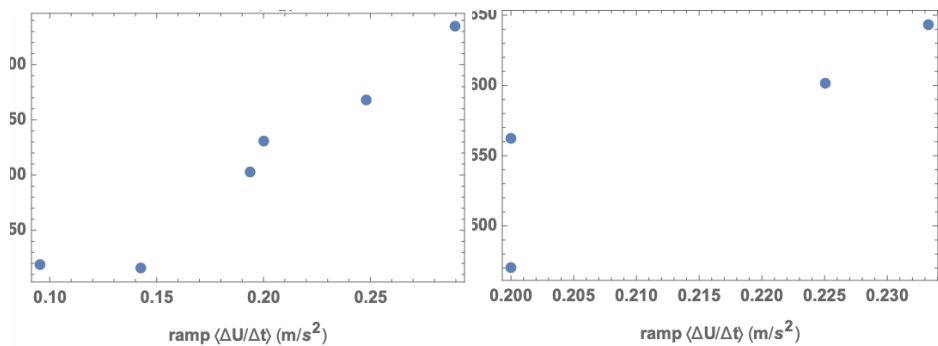


Figure 22. Flap-wise blade root bending moment M_{brfw} (max. of 3 blades) versus ramp bulk acceleration, for cases with ramp-induced $U > V_{rated}$: turbine 3 (left) and turbine 8 (right), from LES/Flex. Vertical-axis values obscured for proprietary reasons.

Deleted: 2122

545 As long as rated power is achieved, the loads during the ramp events are relatively constant into the farm (M_{brfw} and M_{tbfa} vary $< \sim 10\%$), with the exception of the first two turbines (due to the wake first arising). This is demonstrated for the root flap-wise bending moments of the blades in [Figure 232223](#), which shows the mean M_{brfw} over all three blades during ramp passage at each turbine. For cases with wind speeds not exceeding V_{rated} , the loads decrease progressing further into the farm. For these sub-rated cases (6 and 7) the right-hand plot also shows how the loads first grow relative to their pre-ramp values, then decay as the ramp propagates through the farm and U decreases. The left-hand plot in [Figure 232223](#), is consistent with the ramp accelerations remaining undamped from turbine to turbine, while the right-hand further shows that for all cases the ramps tend

550

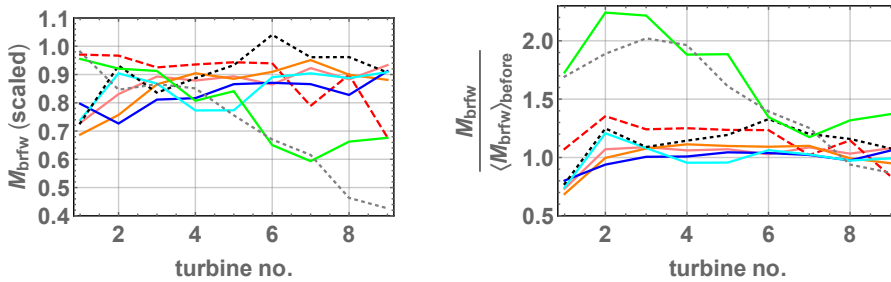
Deleted: Figure 2223

Deleted: Figure 2223

to increase loads after the first turbine, at least due to the associated increase in wind speeds (with subsequently reduced C_T) and wake. Nearly identical results arise when considering the normalized tower base fore-aft moments M_{tba} (not shown). In [Figure 232223](#), one can also see that when rated power is achieved, the dominant blade loading is relatively constant throughout the wind farm; when V_{rated} is not exceeded, then the loads tend to decrease within the farm along with the speed. One can see within the farm where $U > V_{rated}$ that the rotor-mean loads do not differ much from their pre-ramp values; however, in some cases the speed falls below rated (e.g. case 2 downwind of turbine 1) and the loads are higher than their pre-ramp values.

Deleted: Figure 2223

560



565 **Figure 23.** Mean flap-wise blade root bending moment M_{brfw} during ramp passage for all cases (averaged over all blades), versus distance into the farm (recalling turbine separation of $7D = 560\text{m}$). Left: in arbitrary units (proprietary); right: normalized by pre-ramp values. Colour/case legend same as [Figure 11](#), 12, 14-19, 23.

Deleted: 2223

Deleted: Figure 11

The maximum simulated ramp-induced loads found at each turbine behave similarly to the mean values shown above in terms of evolution through the farm, but not in terms of magnitude. [Figure 242324](#) shows the maximum flap-wise root bending moment versus turbine number for each case simulation. Relative to their values before the ramps, the loads are significantly larger, particularly within the wind farm. The ramps are seen to increase the *maximum* loads, even as V_{rated} is exceeded and obviously when V_{rated} is not exceeded, since the wind speed is simply higher. This is also the case for the tower base fore-aft moments.

570

Deleted: Figure 2324

575

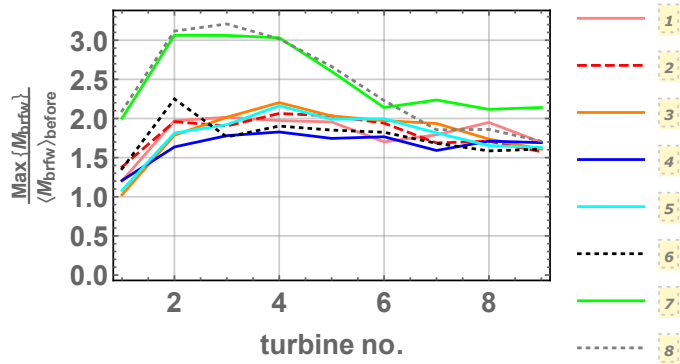
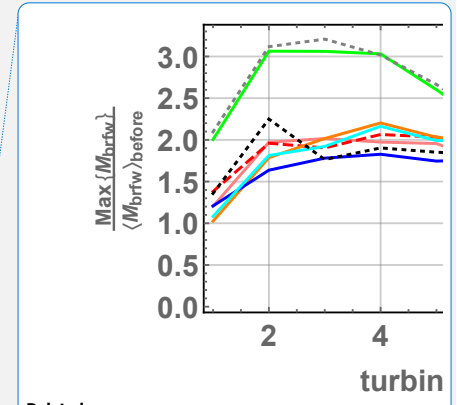


Figure 24. Maximum flap-wise blade root bending moment M_{brflw} for all ramp cases from coupled LES, as function of distance into the farm (turbine number, where turbine separation is 560 m). Colour/case legend same as in Figure 11, 12, 14-19, 22.



Deleted:

Deleted: 2324

Deleted: Figure 11

4.3 Ensemble ramp parameter space and effect on loads

585 Thus far we have discussed the effects of two of the three input parameters defining the wind ramp simulation ensemble, i.e., ramp acceleration and wind speed. The input space also included shear above hub-height, in order to address the variable amount of entrainment expected, and its effect on the flow and wind farm during ramp events. The pre-ramp shear in some cases were shifted in the full model-chain, compared to ensemble prescription (Table 1). In case 5 the LES gave an upwind shear before the ramp of -0.005 s^{-1} instead of 0, and the nonzero (positive) shear cases (1,2,4,6,8) had inflow dU/dz diagnosed to be approximately half the design choice. Regardless of its magnitude, the upwind pre-ramp shear was not found to directly impact the shear or entrainment above and within the simulated farm, and the LES fields exhibited little correlation between dU/dz upwind and within/over the farm; this is consistent with a ‘windfarm boundary-layer’ developing (e.g. Porté-Agel *et al.*, 2020). Before ramp passage, the cases with lowest speeds have smaller dU/dz between turbines, but after passage, the cases with lowest wind speed tend to exhibit higher upper-rotor shear in the farm, especially downwind of the first three turbines. Both before and after ramp passage, within the farm dU/dz over the upper half-rotor ranges from 0 to 0.16 s^{-1} (up to ~ 8 times ambient values) due to the turbines, with the difference of dU/dz being positive or negative depending on distance downstream and case. There is no straightforward relationship between shear before and after ramp passage at these heights, as with the ambient-condition observations; thus we do not include plots of the shear here (Kelly *et al.*, 2019b include such).

Deleted: Table 1

605 Returning to the effects of ramps on loads, we note the ramp accelerations shown earlier with loads (e.g. [Figure 222122](#)) were calculated in bulk, as the ratio of ramp amplitude to duration, $\Delta U/\Delta t$. But if one considers the accelerations calculated directly at each timestep of the simulated timeseries (every 0.04 s), then its relation to loads becomes difficult to see, especially if dU/dt is only considered at a single point in space. Using different averaging times (e.g. from 5–60s), a correlation between loads and dU/dt appears, but the optimal averaging time depends on the ramp duration, and such dependence was not clear; more work involving filtering and turbine response would better clarify this.⁸ The accelerations are dependent on the averaging
610 time used, and we remind that turbines act as low-pass filters, responding less to shorter duration accelerations. The spectral response of wind turbines—as well as their control systems—is beyond the scope of this work, though it can be considered relative to the spectral content of accelerations. Given all this, and that we are using only a particular control system and turbine, we have focused on response to the bulk acceleration as above.

615 For the tower base fore-aft and blade root flap-wise bending moments considered here, the maximum loads for each turbine and case occur during the ramp events, near the time when wind speed crosses V_{rated} . The maximum of tower base fore-aft moment ($M_{\text{tbfa,peak}}$) and blade root flap-wise bending moment ($M_{\text{brfw,peak}}$) are generally correlated to maximum acceleration for single (unwaked) turbines, as previously shown by e.g. Hannesdóttir *et al.*, 2019. But in a windfarm the peak accelerations can be comprised of both the turbulence (primarily from the wake) as well as the ramp acceleration. Short-duration
620 accelerations (with characteristic timescales much smaller than the ramp rise-time Δt) due to the wake are not directly relatable to the ramp acceleration, and can be ~ 10 – 30 times larger than the *bulk* acceleration $\Delta U/\Delta t$. Thus when plotting maximum load versus maximum acceleration, there is some ‘noise’ in addition to the trend that one sees. This is shown in [Figure 252425](#),
which includes all turbine responses where a ramp causes wind speed to exceed V_{rated} . The sensitivity of peak loads to *peak* acceleration appears to be an order of magnitude smaller than the sensitivity to *bulk* ramp acceleration: $\partial M_{\text{brfw,peak}}/\partial (dU/dt)_{\text{peak}} \approx 6\%$ per $\text{m}\cdot\text{s}^{-2}$ and $\partial M_{\text{tbfa,peak}}/\partial (dU/dt)_{\text{peak}} \approx 3\%$ per $\text{m}\cdot\text{s}^{-2}$. However, this is again via single-point
625 calculations which are not representative of the whole rotor or turbine, and partly due to wake-related accelerations uncorrelated to the ramp.

Deleted: Figure 2122

Deleted: Figure 2425

⁸ Note that different turbines, as well as different control systems/strategies, will have markedly different spectral responses; thus an optimal averaging time is not certain nor trivial.

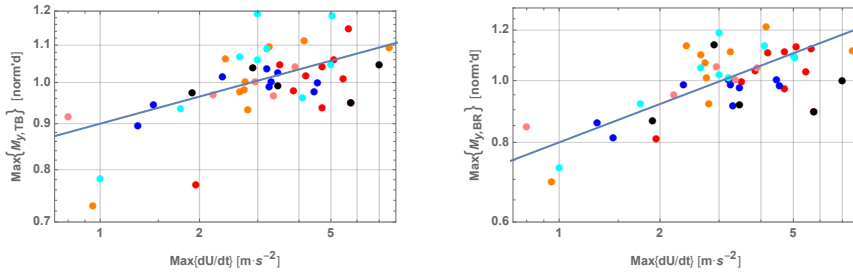


Figure 25. Maximum loads (M_{tbfa} at left, M_{brfw} at right) versus maximum acceleration: all cases and turbines, where speed exceeds rated. Loads values normalized by mean of all points to protect proprietary information. Colors correspond to cases following previous figures. Lines indicate sensitivity: log-log slope of 0.1 at left, 0.2 at right.

Deleted: 2425

635

For context, we revisit the sensitivity of flap-wise blade root bending moment M_{brfw} and tower-base fore-aft moment M_{tbfa} to bulk ramp acceleration $\Delta U/\Delta t$: $\partial \ln M_{brfw} / \partial \ln (\Delta U/\Delta t)$ and $\partial \ln M_{tbfa} / \partial \ln (\Delta U/\Delta t)$ were seen to be the same in both stand-alone and LES coupled simulations (expressed as percentage change in load per acceleration). This is not completely unexpected, recalling that both load types are directly driven by the thrust force. Perhaps more importantly, the loads are increased by roughly 45% for M_{brfw} and 50% for M_{tbfa} relative to their values during the non-ramp conditions simulated (Figure 10); this is also true for the un-waked turbines in the LES. For the NM80 turbine and its control system used here it is expected that the M_{brfw} and M_{tbfa} for un-waked turbines will vary by $\sim 45\%$ or 50% respectively, plus $\sim 3\%$ per 0.1 m/s^2 of $\Delta U/\Delta t$ based on the simulated ensemble derived from a decade of observed ramps. Thus the maximum observed ramp acceleration of 1 m/s^2 from the 11 years of data could correspond to an increase in loads of $\sim 75\%$ or more relative to nominal conditions. The sensitivity to ramp acceleration is also found to be the same for downwind turbines in wakes (implicit in Figure 222122), though we remind that the bulk ramp accelerations can differ from the upwind ‘incoming’ ramp $\Delta U/\Delta t$. We note that the range of $\Delta U/\Delta t$ in the ensemble (Table 2) roughly corresponds to ramps expected to occur about twice per year offshore, though weaker ramps obviously occur more frequently (Figure 2). The ramp parameter distributions shown in Section 2 and the results given in sections 3–4 are also consistent with the rate at which offshore ramp events are expected to give conditions exceeding the IEC 61400-1 standard in terms of 10-minute standard deviations of wind speed, following the findings of Hannesdóttir *et al.* (2019).

640

Deleted: Figure 10

645

Deleted: Figure 2122

Deleted: Table 2

Deleted: Figure 2

650

5 Conclusions

The statistics of wind speed ramps, and their effects on loads within a wind farm—including sensitivities of loads to ramp characteristics—have been investigated here. Specifically, we focused on the tower-base fore-aft bending moment and flap-

660 wise blade root bending moment. Such quantitative work was facilitated by [1] statistical reduction based on low-order physics and micrometeorology, via [2] long-term high-frequency observations, along with [3] the incorporation and use of an appropriately coupled high-fidelity model-chain. The coupled models comprising the latter are constrained Mann-model turbulence simulation, large-eddy simulation including an actuator-line model, and the aero-elastic loads model Flex5. Through two model-chains of coupled simulations (Mann-model to Flex5, and Mann-model to LES with actuator line modelling and Flex5), using a statistically representative ensemble of cases based on the reduced-parameter probability space derived from effectively offshore observations, we were able to find and explain a number of effects. The main results are summarized in the list below.

- A compact distribution of relevant parameters describing wind speed ramps in offshore conditions was found, based on long-term observations and accounting for the dominant physics.
- 670 • Ramps causing the wind to exceed rated speed ($U > V_{\text{rated}}$) offer the highest maxima of blade-root flap-wise bending moment and tower base fore-aft moment; in these cases the load maxima depend primarily on ramp acceleration.
- For ramps that do not exceed rated speed ($U < V_{\text{rated}}$), the loads depend on U more than on ramp acceleration; however, in these cases the speed and turbulence *combined* can result in load maxima.
- The bulk ramp accelerations $\Delta U/\Delta t$ persist through the farm, despite generation of wake turbulence and the decrease of mean winds into the farm.
 - 675 ○ Downwind of the second turbine, if/where rated speed is exceeded, ramp-associated peak loads are relatively constant through the farm.
- As mean wind decreases further into the farm, ramps can begin to have $U < V_{\text{rated}}$ (again crossing rated speed), leading to higher loads relative to pre-ramp values.
 - 680 ○ The distance into farm where this happens depends on the ratio $U_{\text{post-ramp}}/V_{\text{rated}}$.
- The maxima of blade-root flap-wise bending moments (M_{brfw}) and tower base fore-aft moments (M_{tbfa}) each had a sensitivity of roughly 3% per 0.1 m s^{-2} of bulk ramp acceleration for the turbine considered (NM80). This was found in both in stand-alone and coupled LES simulations.
- In un-waked conditions the total increase in M_{brfw} and M_{tbfa} due to wind speed ramps was 45% and 50% respectively, plus 3% per 0.1 m s^{-2} of $\Delta U/\Delta t$ for the turbine considered.
- 685

With regard to further work and improvements, we note several things. The simulated flows lack the effect of stability, particularly the stable capping-inversion, which acts to maintain shear above the farm while moderating entrainment into the farm from above. LES of such events through wind farms can incorporate different capping-inversion strengths and inversion heights, in order to investigate the effect of the shear as well as the inversion height and strength. However, we note the rarity of ABL depths below 300 m (Liu & Liang, 2010), i.e., twice the upper rotor tip of the wind turbines simulated here. The wind ramp results are not expected to be significantly affected by such inclusion of stable capping inversions in most cases, though future analysis of both observations and simulations can address this issue. We also note the results here were obtained using wind turbines with a rated speed of 14 m/s, whereas V_{rated} of 12–13 m/s is commonly seen. Lower V_{rated} will increase the occurrence of ramp-affected speeds crossing into the rated power regime, but the joint distributions found here do not change significantly when considering different V_{rated} ; the sensitivity of loads to the ramp accelerations will not necessarily change

Deleted: ,

Deleted: loads begin to increase

either. However, for different turbines and control systems (or operational regimes), one can expect different sensitivity to
700 ramp events; the statistics and findings here, can be useful to estimate expected impacts upon wind farms with other turbines.

Author contributions

M.K. conceived the statistically driven model chain and sensitivity concepts, performed the statistical analysis and probabilistic
characterization, derived the case ensemble, analysed and visualized the results, and wrote the manuscript draft.
S.J.A. performed the coupled large-eddy/actuator-line/aeroelastic simulations, designed the LES setup (with M.K.), designed
705 and implemented Mann-model forcing in the large-eddy simulation code (Ellipsys), and wrote the basis of section 4.1.
Á.H. executed her ramp-detection algorithm to identify observed ramps and retrieve ramp parameters and ran the constrained
Mann-model simulations for input into Flex5 and LES. All authors have contributed to correcting the manuscript.

Competing interests

710 The authors have no competing interests to declare involving this work.

Acknowledgements

We thank Hans Ejsing Jørgensen for informing of Carbon-Trust's Offshore Wind Accelerator funding call and connecting
with the Fraser-Nash Consultancy, whom helped to secure funding for (and administrate) this project; also thanks to Niels
N. Sørensen for input on the numerical methodology.

715 References

- Aagard Madsen, H., Bak, C., Paulsen, U. S., Guanaa, M., Fuglsang, P., Romblad, J., Olesen, N. A., Enevoldsen, P.,
Laursen, J. and L. Jensen: The DAN-AERO MW Experiments Final report, Tech. Rep. Risø-R-1726-(EN), Risø National
Laboratory, Roskilde, Denmark, 2010.
- Abkar, M., and Porté-Agel, F.: The Effect of Free-Atmosphere Stratification on Boundary-Layer Flow and Power Output from
720 Very Large Wind Farms, *Energies*, 6, 2339–2361, <https://doi.org/10.3390/en6052338>, 2013.
- Alcayaga Román, L.A.: From Gusts to Turbulence: Vertical Structure (Fra Vindstød Til Turbulens: Vertikale Struktur),
M.Sci. Thesis, Danish Technical University/Oldenburg University, 2017.
- Allaerts, D., and Meyers, J.: Wind farm performance in conventionally neutral atmospheric boundary layers with varying
inversion strengths, *J. Physics Conf. Series* 524(1), p. 012114, 2014.
- 725 Andersen, S. J.: Simulation and Prediction of Wakes and Wake Interaction in Wind Farms, PhD Dissertation, Danish Technical
University, 2014.

- Andersen, S. J., Sørensen, J. N., and Mikkelsen, R.F.: Performance and Equivalent Loads of Wind Turbines in Large Wind Farms, *J. Phys. Conf. Ser.* 854, 012001, <http://doi.org/10.1088/1742-6596/854/1/012001>, 2017.
- 730 Andersen, S. J., Sørensen, J. N., and Mikkelsen, R. F.: Turbulence and entrainment length scales in large wind farms, *Phil. Trans. Roy. Soc. A:Mathematical, Physical and Engineering Sciences*, 375 (2091), 20160107, <https://doi.org/10.1098/rsta.2016.0107>, 2017.
- [Andersen, S.J., Sørensen, N.N., and Kelly, M.: LES Modelling of Highly Transient Wind Speed Ramps in Wind Farms, *J. Phys.: Conf. Ser.* 1934, 012015, <https://doi.org/10.1088/1742-6596/1934/1/012015>, 2021.](#)
- 735 Berg, J., Vasiljevic, N., Kelly, M., Lea, G., and Courtney, M.: Addressing Spatial Variability of Surface-Layer Wind with Long-Range WindScanners, *J. Atmospheric and Oceanic Tech.*, 32(3), 518–527, 2015.
- DeMarco, A. and Basu, S.: On the tails of the wind ramp distributions, *Wind Energ.* 21(10), 892–905, <https://doi.org/10.1002/we.2202>, 2017.
- Dimitrov, N. K., and Natarajan, A.: Application of simulated lidar scanning patterns to constrained Gaussian turbulence fields for load validation, *Wind Energ.* 20(1), 79–85, <https://doi.org/10.1002/we.1992>, 2017.
- 740 Dimitrov, N. K., Natarajan, A., and Kelly, M.: Model of wind shear conditional on turbulence and its impact on wind turbine loads, *Wind Energ.* 18(2), 1917–1931, <https://doi.org/10.1002/we.1797>, 2014.
- Dimitrov, N. K., Kelly, M., Vignaroli, A., and Berg, J.: From wind to loads: wind turbine site-specific load estimation with surrogate models trained on high-fidelity load databases, *Wind Energ. Sci.*, 3(2), 767–790, <https://doi.org/10.5194/wes-3-767-2018>, 2018.
- 745 Frandsen, S. T., Jørgensen, H. E., and Sørensen, J. D.: Relevant Criteria for Testing the Quality of Models for Turbulent Wind Speed Fluctuations, *J. Solar Energy Eng.*, 130(3), 31016–31022, <https://doi.org/10.1115/1.2931511>, 2008.
- Galinos, C. and Larsen, T.J.: Investigation of rotor imbalance on a NEG-Micon 80 Wind Turbine, DTU Wind Energy Tech. Report I-0386, Roskilde/Risø Campus, 13 p., 2015.
- Gallego-Castillo, C., Cuerva-Tejero, A., and Lopez-Garcia, O.: A review on the recent history of wind power ramp forecasting, *Renew. Sus. Energy Rev.*, 52, 1148–1157, <http://dx.doi.org/10.1016/j.rser.2015.07.154>, 2015.
- 750 Gilling, L., Sørensen, N. N., and Réthoré, P.-E.: Imposing resolved turbulence by an actuator in a detached eddy simulation of an airfoil, *Proc. Of the 2004 European Wind Energy Conference*, European Wind Energy Association (EWEA), Marseille, 2009.
- Hannesdóttir, Á., Kelly, M., and Dimitrov, N.K.: Extreme variance vs. turbulence: What can the IEC cover? *Wind Energy Denmark 2017 (poster session)*, Herning, Denmark, 2017.
- Hannesdóttir, Á.: Extreme wind speed ramps—probabilistic characterization for turbine loads, [PhD Dissertation](#), Danish Technical University, 2019.
- Hannesdóttir, Á. And Kelly, M.: Detection and characterization of extreme wind speed ramps, *Wind Energ. Sci.*, 4(3), 385–396. <https://doi.org/10.5194/wes-4-385-2019>, 2019.

- 760 Hannesdóttir, Á., Kelly, M., and Dimitrov, N.K.: Extreme fluctuations of wind speed for a coastal/offshore climate: statistics and impact on wind turbine loads, *Wind Energ. Sci.* 4(2), 325-342, <https://doi.org/10.5194/wes-4-325-2019>, 2019.
- Hannesdóttir, Á, Urbán, A.L., and Verelst, D.R.: Extreme coherent gusts with direction change – observations, yaw control and wind turbine loads, *in preparation for Wind Energ. Sci.*, 2021.
- International Electrotechnical Commission: *IEC 61400-1 Wind turbines—Part 1: Design requirements, 4th ed.*, International Electrotechnical Commission, Geneva, Switzerland, 2019.
- 765 Jahn, D.E., Takle, E.S., and Gallus Jr., W.A.: Wind-Ramp-Forecast Sensitivity to Closure Parameters in a Boundary-Layer Parametrization Scheme, *Bound.-Lay. Meteorol.* 164, 475–490, <https://doi.org/10.1007/s10546-017-0250-5>, 2017.
- Kelly, M., Larsen, G.C., Dimitrov, N.K., and Natarajan, A.: Probabilistic Meteorological Characterization for Turbine Loads, *J. Physics Conf. Series* 524(1), p. 012076, 2014.
- 770 Kelly, M.: From standard wind measurements to spectral characterization: turbulence length scale and distribution, *Wind Energ. Sci.*, 3(2), 533–543, <https://doi.org/10.5194/wes-3-533-2018>, 2018.
- Kelly, M., Cersosimo, R.A., and Berg, J.: Universal wind profile for the inversion-capped neutral atmospheric boundary layer, *Q.J.Roy. Meteorol. Soc.*, 145(720), 982–992, 2019.
- Kelly, M., Andersen S.J., and Hannesdóttir, Á.: Impact of wind-speed ramps on turbines: from fluid-dynamic to aeroelastic simulation, via observed joint statistics, *Tech. Rep. DTU Wind Energy E-0194*, Danish Technical University, Risø Campus, Roskilde, Denmark, 2019.
- 775 Liu, S. and Liang, X.-Z.: Observed Diurnal Cycle Climatology of Planetary Boundary-Layer Height, *J. Climate*, 23, 5790–5809, 2010.
- Mann, J.: The spatial structure of neutral atmospheric surface-layer turbulence, *J. Fluid Mech.*, 273, 141–168, 1994.
- 780 Mann, J.: Wind Field Simulation, *Prob. Eng. Mech.*, 13(4), 269–282, 1998.
- Michelsen, J. A.: Basis3D—a platform for development of a multiblock PDE solver, *Tech. Rep. DTU AFM 92-05*, Danish Technical University, 1992.
- Musilek, P., and Li, Y.: Forecasting of wind ramp events—analysis of cold front detection. *Proc. 31st International Symposium on Forecasting*, Prague, Czech Republic, June 2011.
- 785 Nygaard, N.G. and Hansen, S.D.: Wake Effects between Two Neighbouring Wind Farms. *J. Physics Conf. Series* 753(3), p. 032020, 2016.
- Øye, S.: FLEX5 simulation of wind turbine dynamics. *Proc. 28th IEA Meeting of Experts Concerning State of the Art of Aeroelastic Codes for Wind Turbine Calculations*, International Energy Agency, Lyngby/DTU, Denmark, 1996.
- Panofsky, H.A. and Dutton, J.A.: *Atmospheric Turbulence*, Wiley, 397pp, 1984.
- 790 Peña Diaz, A., Floors, R., Sathe, A., Gryning, S-E., Wagner, R., Courtney, M.S., Larsén, X.G., Hahmann, A.H., and Hasager, C.B.: Ten Years of Boundary-Layer and Wind-Power Meteorology at Høvsøre, Denmark, *Boundary-Layer Meteorology* 158 (1), 1–26, 2016.

- Porté-Agel, F., Bastankhah, M. and Shamsoddin, S.: Wind-Turbine and Wind-Farm Flows: A Review, *Boundary-Layer Meteorology* (2020) 174:1–59, <https://doi.org/10.1007/s10546-019-00473-0>, 2020.
- 795 Sørensen, J. N., and Shen, W. Z.: Numerical modelling of Wind Turbine Wakes, *J. Fluids Eng.*, 124(2), 393–399, <http://dx.doi.org/10.1115/1.1471361>, 2002.
- Sørensen, J. N., Mikkelsen, R. F., Henningson, D. S., Ivanell, S., Sarmast, S., and Andersen, S. J.: Simulation of wind turbine wakes using the actuator line technique, *Phil. Trans. R. Soc. A*, 373, 20140071, <http://dx.doi.org/10.1098/rsta.2014.0071>, 2015.
- 800 Sørensen, N. N.: General purpose flow solver applied to flow over hills, PhD Dissertation, Danish Technical University / Risø National Laboratory, 2003.
- Ta Phuoc, L.: Modèles de sous-maille appliqués aux écoulements instationnaires et décollés, Journée thématique DRET—Aérodynamique instationnaire turbulente, aspects numériques et expérimentaux, 1994.
- Ta Phuoc, L., Lardat, R., Coutanceau, M., and Pineau, G.: Recherche et analyse de modes de turbulence de sous maille adaptés aux écoulements instationnaires décollés, Tech. Rep. LIMS1 93074, Lab. d'Inf. pour la Mécanique et les Sci. de l'Ingenieur, Orsay, 1994.
- Troldborg, N.: Actuator line modeling of wind turbine wakes. PhD Dissertation, Danish Technical University, 2009.
- Wyngaard, J.: *Turbulence in the Atmosphere*, *Cambridge Univ. Press*, 393pp, 2010.

810