

# Vertical wake deflection for floating wind turbines by differential ballast control

Emmanouil M. Nanos<sup>1</sup>, Carlo L. Bottasso<sup>1</sup>, Simone Tamaro<sup>1</sup>, Dimitris I. Manolas<sup>2</sup>, and Vasilis A. Riziotis<sup>2</sup>

<sup>1</sup>Wind Energy Institute, Technische Universität München, 85748 Garching b. München, Germany

<sup>2</sup>School of Mechanical Engineering, National Technical University of Athens, 15780 Athens, Greece

**Correspondence:** C.L. Bottasso (carlo.bottasso@tum.de)

## Abstract.

This paper presents a feasibility analysis of vertical wake steering for floating turbines by differential ballast control. This new concept is based on the idea of pitching the floater with respect to the water surface, thereby achieving a desired tilt of the turbine rotor disk. The pitch attitude is controlled by moving water ballast among the columns of the floater.

- 5 This study considers the application of differential ballast control to a conceptual 10 MW wind turbine installed on two platforms, differing in size, weight and geometry. The analysis considers: a) the aerodynamic effects caused by rotor tilt on the power capture of the wake-steering turbine and at various downstream distances in its wake; b) the effects of tilting on fatigue and ultimate loads, limitedly to one of the two turbine-platform layouts; and c) for both configurations, the necessary amount of water movement, the time to achieve a desired attitude and the associated energy expenditure.
- 10 Results indicate that – in accordance with previous research – steering the wake towards the sea surface leads to larger power gains than steering it towards the sky. Limitedly to the structural analysis conducted on one of the turbine-platform configurations, it appears that these gains can be obtained with only minor effects on loads, assuming a cautious application of vertical steering only in benign ambient conditions. Additionally, it is found that rotor tilt can be achieved in the order of minutes for the lighter of the two configurations, with reasonable water ballast movements.
- 15 Although the analysis is preliminary and limited to the specific cases considered here, results seem to suggest that the concept is not unrealistic, and should be further investigated as a possible means to achieve variable tilt control for vertical wake steering in floating turbines.

## 1 Introduction

- Power production from wind is typically organized in clusters of turbines, forming a wind plant. By interacting through their wakes within the plant, turbines are subjected to adverse effects that reduce their power capture and life expectancy, both for onshore and offshore installations. While in the latter case typical spacings between turbines are quite large, wake-induced losses can still be significant. In fact, in typical offshore conditions wakes persist many diameters downstream of the rotor because of the low turbulence of the atmospheric boundary layer (Vermeer et al., 2003).
- 20

Several remedies against these effects have been proposed so far, as for example changing the induction factor (Steinbuch et al., 1988), redirecting (or “steering”) the wake path in the lateral or vertical directions (Parkin et al., 2001; Fleming et al., 2015; Campagnolo et al., 2016b; Fleming et al., 2019; Campagnolo et al., 2020; Doekemeijer et al., 2021), dynamically exciting the wake to enhance mixing (Frederik et al., 2020b, a), and various possible static and/or dynamic – largely unexplored – combinations thereof (Cossu, 2020c). Among these techniques, it appears that static induction is not very effective as far as power capture is concerned (van der Hoek et al., 2019). On the other hand, dynamic mixing techniques are promising, but further research is needed to address various concerns related to increased loading and actuator duty cycle (Wang et al., 2020), as well as to loss of effectiveness in turbulent inflows (Munters and Meyers, 2018). Among these various proposed solutions, static wake redirection is the most mature wind farm control technique available today, which has already been demonstrated in field experiments (Fleming et al., 2019, 2020; Doekemeijer et al., 2021) and it is also offered as a market product (Energy, 2019).

Wake redirection is based on purposely misaligning the rotor with respect to the wind vector, thereby creating a force component normal to the wind direction that is responsible for deflecting the wake. *Lateral* wake deflection is based on yawing the turbine out of the wind. Since horizontal axis wind turbines are already equipped with active yaw control, this method does not require any radical hardware modification. This fact, together with the significant wake displacements that can be achieved without excessively increasing the loads on the steering turbine, is one of the reasons for the success of this technique. In fact, wake steering has been successfully implemented on wind turbines originally designed without taking this form of wind farm control into consideration (Fleming et al., 2019, 2020; Doekemeijer et al., 2021).

*Vertical* wake deflection works in the same way as lateral deflection: when the rotor is tilted about an horizontal axis, its thrust is inclined with respect to the ground; in turn, the equal and opposite reaction on the flow is also inclined, resulting in a vertical force component with respect to the ground that deflects the wake in the vertical direction.

There are, however, some key differences between the lateral and vertical deflection strategies.

First, contrary to lateral wake steering, standard wind turbine configurations do not offer an already existing mechanism that can be employed for deflecting the wake vertically. The only exception is the case of downwind teetering rotors, where vertical wake deflection can in principle be achieved by tilting the tip-path plane through blade flapping; however, there are no large downwind teetering rotors on the market today.

Second, vertical steering presents a strong directional dependence. While also lateral steering is not exactly symmetric between left and right misalignments because of the spinning of the rotor (Fleming et al., 2018), deflecting the wake towards the sky or towards the ground has profoundly different effects. In fact, in vertically sheared flows, an upward vertical deflection moves the wake into a higher speed flow region, whereas the opposite happens for a downward deflection. Furthermore, when subjected to a downward deflection the wake eventually interacts with the ground, resulting in a strong deformation of the wake structures and in its accelerated recovery (Scott et al., 2020).

Notwithstanding the technical difficulty of implementing vertical wake deflection, this concept has received some attention in the recent literature. For example, Srinivas et al. (2012) presented an analytical study of vertical steering, and evaluated some engineering models in their ability to predict the vertical motion of the wake. Fleming et al. (2015) used computational fluid

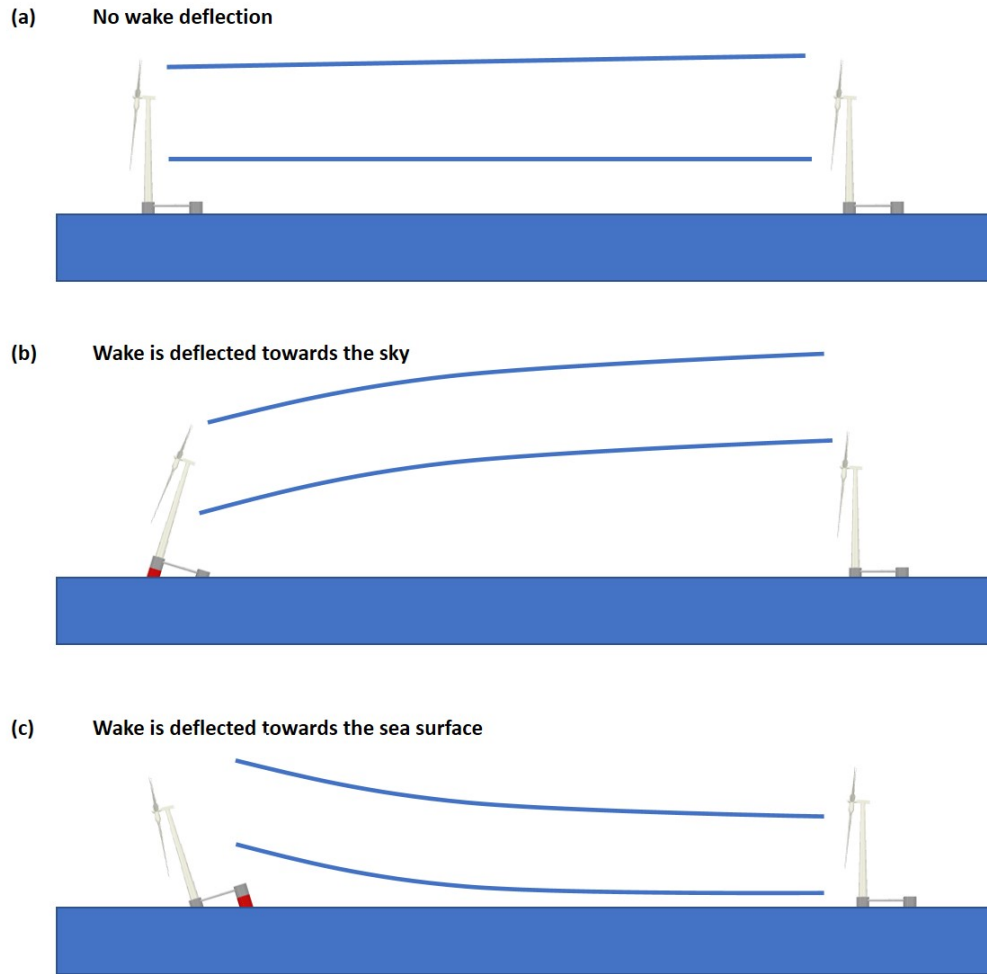
dynamics (CFD) to simulate a single column of two wind turbines with tilted rotors, while in the paper of Annoni et al. (2017) the authors simulated up to three turbines in a column; both studies reported significant power gains at the cluster level, caused by an improved capture downstream that offsets more limited losses upstream. Simulation studies on more complex layouts were conducted by Cossu (2020a) and Cossu (2020b), where the front two rows of turbines in a farm were tilted, obtaining significant power gains at the wind plant level. The author also studied the effect that rotor size, longitudinal spacing between the turbines and thrust setting can have on the plant power output. These studies have highlighted an interesting phenomenon, whereby downward wake deflection leads to the creation of high-speed streaks in the flow, which again are associated with significant power boosting at the plant level. Su and Bliss (2019) used a free-wake method to study a tilted rotor, reporting power benefits for a two-turbine column when deflecting the wake of the upstream machine towards the sky. Scott et al. (2020) performed wind tunnel measurements of a four-by-three grid layout using scaled wind turbine models, where the machines in the third row were tilted. Among other results, the authors reported a faster wake recovery for downward deflection than in the upward case.

In summary, the literature already reports a significant body of evidence indicating that vertical wake steering can be an effective form of wind farm control. Further potential gains could be possibly achieved by combining vertical and lateral steering, although this problem does not seem to have been explored yet. However, the problem of how vertical steering can be achieved in practice remains at present unsolved, except for the downward teetering turbine configuration.

To address this gap, Nanos et al. (2020) proposed a novel way of implementing vertical wake steering for floating wind turbines. This new idea exploits the fact that semi-submersible platforms, which are among the most popular floating concepts (Liu et al., 2016), require the use of ballast to achieve a desired attitude with respect to the sea surface. Attitude control is commonly obtained by storing and distributing water among the columns of the platform in order to change the center of gravity position. Active ballast control systems are already installed on board semi-submersible platforms used by the oil industry; the same concept is included in some offshore-wind conceptual designs (Roddier et al., 1997), where its purpose is mainly to counteract the pitching moment created by the thrust force of the rotor. With reference to wind farm control, the idea pursued here is to use an active ballast control system to pitch the platform, this way achieving a desired tilting of the rotor disk and, therefore, a vertical deflection of the wake. The concept of vertical wake deflection through platform pitching by active ballast control is illustrated in Fig. 1.

The scope of the present work is to refine the concept first presented in Nanos et al. (2020). The objective here is clearly not to design an actual system implementing vertical wake steering by active ballast control, but to perform a feasibility analysis, with the goal of answering the following basic questions:

- Is it conceptually feasible to use differential ballast control to perform vertical wake steering for wind farm control? and what would be the most and least favourable configurations and operational conditions?
- Can an existing ballast control system be used for this additional purpose (similarly to what has been done with yaw control for lateral wake deflection), or should the system be modified somehow?



**Figure 1.** Schematic representation of the vertical wake redirection concept.

- Would such a system be able to reach sufficiently large pitch motions (and, hence, rotor tilt angles)? and what would be the achievable tilt rate and associated energy cost?
  - Could an existing floating wind system be used for vertical wake steering by ballast control, or would the turbine, platform and/or mooring system need to be partially resized?
- 95

More specifically, this paper will:

- Assess the effect of rotor tilt on the wake of a turbine and on the power yield of a column of two turbines. To this purpose, CFD simulations of a scaled wind turbine, validated with wind tunnel experiments, are employed. Expanding on previous tilt misalignment studies, which analyzed streamwise spacings of 6-8 rotor diameters (Fleming et al., 2015;

100 Annoni et al., 2017; Cossu, 2020b; Scott et al., 2020), the present work considers distances up to 12 rotor diameters, which is a more realistic spacing for offshore-wind applications.

- Make preliminary calculations of the quantity of water ballast that needs to be redistributed for achieving the necessary tilting of the rotor, along with estimating the associated energy expenditure.

- Assess the impact of the proposed method on the structural loading of the turbine, the platform and its mooring system.

105 Although semi-submersible platforms and turbines are designed and certified to withstand significant pitch excursions under extreme weather conditions, a specific assessment of the effects on the structure of this new form of wind farm control is important in order to evaluate the overall feasibility of the concept. To this end, hydro-aero-servo-elastic simulations of a conceptual wind turbine on a floating platform are utilized.

The article is organized as follows. Section 2 gives a description of two reference platforms and one wind turbine that are  
110 used for assessing the feasibility of the proposed concept. Section 3 analyzes the effects of tilting the rotor on the turbine wake and on the power of a two-turbine cluster through CFD simulations, which were first validated against experimental data. Section 4 presents the effects of tilt on the extreme and fatigue loads computed by hydro-aero-servo-elastic simulations. Section 5 assesses the differential ballast control concept on the basis of an hydrostatic analysis, and presents an initial rough sizing of the system for the two different platform configurations. Finally, Sect. 6 presents the main conclusions and outlines  
115 possible future steps.

## 2 Reference turbine and platforms

The present analysis is based on one reference wind turbine and two reference floating platforms. Unlike other wake control strategies, ballast control for vertical wake deflection is substantially affected by the design characteristics of the turbine and of the platform.

120 Regarding the turbine configuration, upwind wind turbines are favored when wake deflection towards the sky is considered, because of the built-in uptilt used to increase rotor-tower clearance (Burton et al., 2001). In fact, the rotor plane is already tilted nose-cone up (typically by about  $5^\circ$ ); therefore, in order to achieve a given misalignment, a smaller additional rotation is needed for a nose-up attitude (upward wake deflection, as in Fig. 1b) than for a nose-down one (downward wake deflection, as in Fig. 1c). Consequently, smaller platform rotations are necessary for deflecting the wake towards the sky than towards the sea  
125 surface. Exactly the opposite happens for a downwind turbine, where the built-in uptilt used to increase rotor-tower clearance favours downward wake deflections, resulting in smaller platform angles when the wake is steered towards the sea surface than towards the sky.

As shown by previous research (as for example Cossu (2020a, b); Scott et al. (2020)) and later on in this paper, it appears that downward wake deflection is more effective for improving cluster power than upward deflection. From this point of  
130 view, a downwind turbine configuration appears to be better suited for this application than an upwind one. Notwithstanding this important difference between the two configurations, an upwind turbine is used in this work, since it represents today's

standard offshore configuration and no large downwind turbines are at present available on the market. The following analyses are based on the DTU 10 MW turbine (Bak et al., 2013), whose basic characteristics are reported in Table 1.

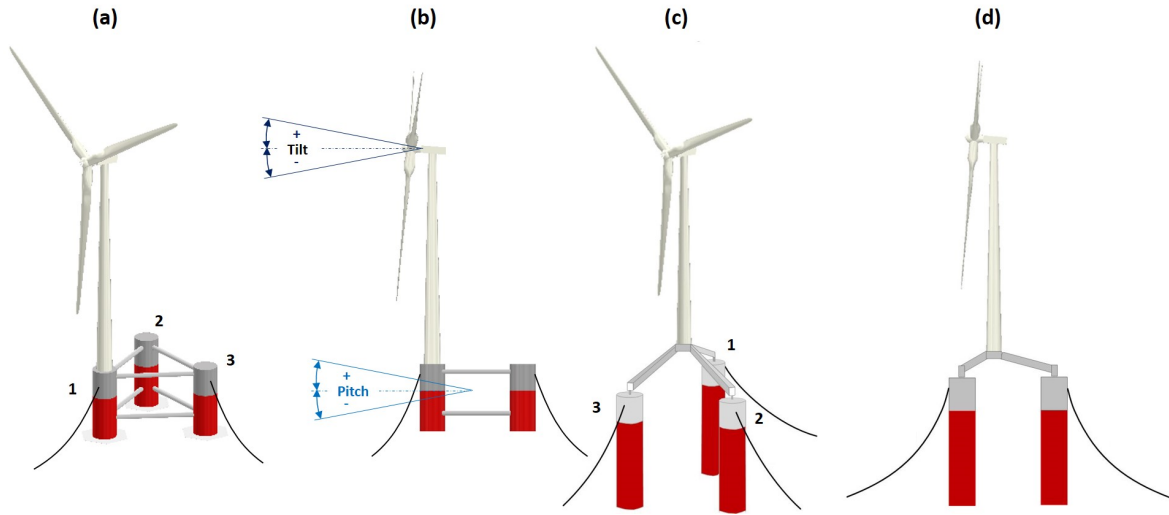
**Table 1.** Basic characteristics of the DTU 10 MW reference wind turbine.

Data	Value	Data	Value
Configuration	Upwind	Wind class	IEC 1A
Rated electrical power	10.0 MW	Rated thrust	1 400 kN
Hub height [H]	119.0 m	Rotor diameter [D]	178.30 m
Rotor uptilt angle	5.0°	Total weight	1 280 tons

Since the present wake control concept is based on the pitching of the whole platform, also the characteristics of the floater  
 135 – in addition to those of the turbine – play an important role. In fact, the ballast distribution that is required for a specific pitch  
 attitude depends on the size, weight and draft of the platform. Additionally, ballast is affected by where the turbine is located  
 with respect to the platform, either close to its center or to its periphery. In case the platform is not axially symmetric about the  
 turbine tower, the yaw orientation of the turbine with respect to the platform also plays a role in determining the differential  
 ballast that is necessary for a given attitude. Finally, it should be noted that, depending on the configuration of the system, a  
 140 change of platform pitch can imply – in addition to tilting – also a vertical motion of the hub; as a result, the rotor can be  
 exposed to a slightly different wind speed in a sheared inflow.

In order to explore some of these configuration-related effects, the present paper makes use of two different reference plat-  
 forms. The first one, hereafter called Platform A (Fig. 2a and 2b), is based on the concept developed in the WINDFLOAT  
 project (Roddirer et al., 1997). The platform is composed by three columns made out of steel, arranged in a triangular con-  
 145 figuration by connecting trusses, with the turbine directly placed on top of one of the columns. The second platform (Fig. 2c  
 and 2d) is the tri-spar floater developed in the INNWIND project (Azcona et al., 2017; Manolas et al., 2018), hereafter called  
 Platform B. This floater was developed to accommodate a 10 MW machine mounted on a steel structure at the center of three  
 columns, and it represents a hybrid configuration between a semi-submersible and a large-draft spar buoy. This design uses  
 concrete for the spars, resulting in a much heavier structure compared to Platform A. The principal characteristics of the two  
 150 platforms are summarized in Table 2.

Figure 2b defines the angle conventions adopted in this paper. Tilt indicates the angle between the rotor axis and the wind  
 vector, while pitch refers to the angle between the platform and the water surface. While wind vector and water surface are  
 assumed to be always parallel, the tilt and pitch angles are not necessarily equal to each other, because of the built-in uptilt  
 used in wind turbines to increase the clearance between rotor and tower with the purpose of relaxing the stiffness requirements  
 155 on the blade. For a positive tilt, the rotor axis is above the horizon when looking upstream. Hence, an upwind wind turbine  
 has a positive built-in uptilt, whereas a downwind machine has a negative one; additionally, positive tilt implies that the wake  
 is deflected towards the sky, whereas for negative tilt the wake is steered towards the sea surface. Pitch follows the same  
 sign convention. For better readability, instead of referring to positive and negative angles, the text will refer to *wake-up* and  
*wake-down* angles, respectively, which is a more intuitive terminology.



**Figure 2.** Sketch of Platform A, based on the WINDFLOAT concept (Roddier et al., 1997) (a,b). Sketch of Platform B, based on the INNWind concept (Azcona et al., 2017; Manolas et al., 2018) (c,d).

**Table 2.** Basic characteristics of the two reference platforms.

	Platform A	Platform B
Column length	38 m	65 m
Column diameter	12 m	15 m
Column to column distance	56.4 m	45 m
Total weight	7000 tons	30000 tons

### 160 3 Characterization of the wake

The effects of rotor tilt on wake development and downstream power capture were evaluated by a combined simulation-experimental study. The G06 scaled model (Nanos et al., 2021) of the reference 10 MW wind turbine was used for this purpose. Previous work by Wang et al. (2021) has shown that scaled wind turbines, designed according to the same specifications of the G06 model, are capable of producing highly realistic wakes in atmospheric boundary layer wind tunnels. A CFD simulation model of the turbine was first verified based on experimental measurements performed in the wind tunnel in rotor-tilted  
165 condition, and then used to explore the characteristics of the wake.

### 3.1 CFD validation and set-up

CFD simulations were executed with a flow solver based on a large eddy simulation (LES) actuator line method (ALM) implemented in Foam-extend (Jasak, 2009), while the wind turbine lifting-line aerodynamics were modeled in FAST (Guntur et al., 2016). This framework has been validated in previous work (Wang et al., 2019), and it is further verified here in tilted conditions using new ad hoc wind tunnel measurements.

An experimental campaign was conducted in the BLAST atmospheric boundary layer wind tunnel at the University of Texas at Dallas (UTD). Further details on the wind tunnel and the G06 scaled model are available in Nanos et al. (2018, 2019, 2021). The model was operated at its optimum tip speed ratio and pitch angle. With the help of a tilting mechanism inserted between the nacelle and the tower top, the rotor was tested at three different attitudes:  $0^\circ$ ,  $20^\circ$  wake-up, and  $-20^\circ$  wake-down.

The wake of the G06 was measured on a vertical plane at a  $5D$  downstream distance by Stereo Particle Image Velocimetry (S-PIV). The velocity at hub height was approximately equal  $10 \text{ ms}^{-1}$ , the turbulence intensity was 8.5%, and the inflow had a vertical shear characterized by an exponent  $\alpha = 0.2$ .

A first set of CFD simulations mimicked the experimental set-up, including the tilting geometry, the wind tunnel walls and the passive generation of the turbulent and sheared inflow, which was obtained by spires placed at the chamber inlet and roughness elements on the floor. Figure 3 shows the simulated and measured time-averaged vertical profile of the inflow at the turbine location, which appear to be in very good agreement with each other. Figure 4 shows the absolute percent error between CFD and S-PIV measurements for the three tilt angles at a  $x/D = 5$  downstream distance. The error was calculated according to the following formula:

$$\epsilon = \left| \frac{u^{\text{exp}}/U_{\text{hub}}^{\text{exp}} - u^{\text{cfd}}/U_{\text{hub}}^{\text{cfd}}}{u^{\text{exp}}/U_{\text{hub}}^{\text{exp}}} \right| 100, \quad (1)$$

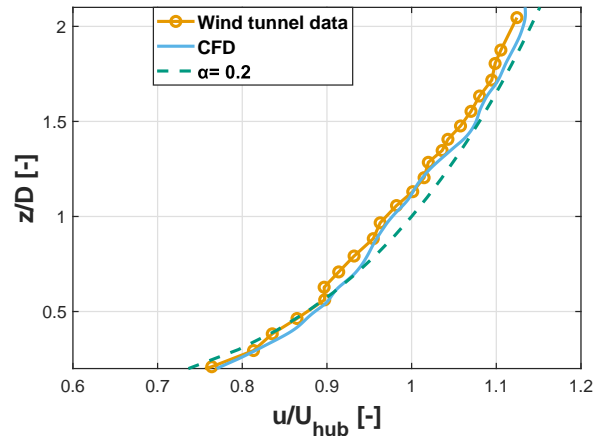
where  $u$  is the flow speed in the wake and  $U_{\text{hub}}$  the inflow speed at hub height, both quantities representing time-averaged streamwise values. Results show that the error is for the most part of the domain between 0% and 2%, reaching 4% in some limited areas. This error is considered acceptable for the scope of the present analysis. Additional details on the experimental set-up, the S-PIV data and the comparison between experiments and simulations are available in Nanos et al. (2021).

### 3.2 Effects of tilt on the flow

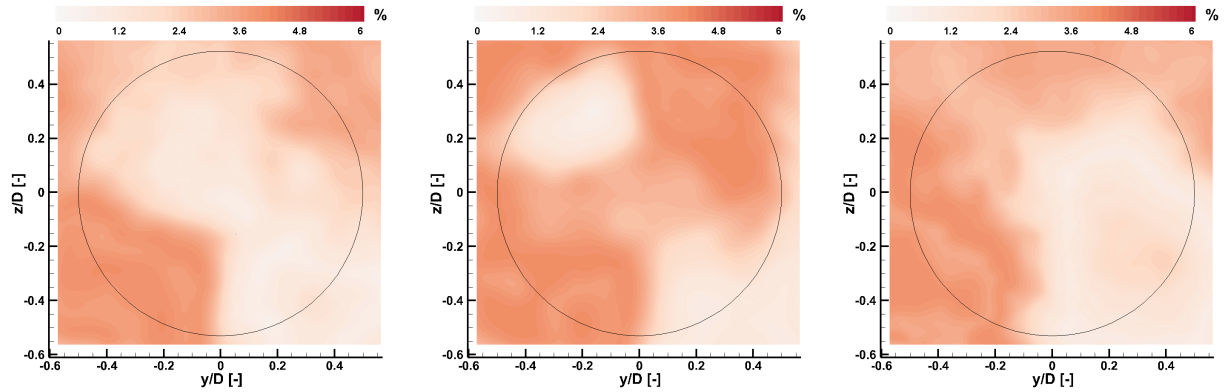
After validating the CFD model for this specific set-up, additional simulations were conducted at different rotor tilt angles. This second set of simulations was based on the configuration of Fig. 2a,b, where the rotor is facing away from the other two columns. This implies that, since the position of the turbine for each tilt angle is determined by the platform kinematics, a wake-up tilt rotation generates a small vertical lifting of the hub, whereas a wake-down tilt comes with a small downward motion.

To compute the power available in the wake, the power coefficient of the untilted configuration was obtained from the CFD results by computing a rotor-effective wind speed. Next, using the computed value of the power coefficient, the power in the





**Figure 3.** Measured and simulated boundary layer profiles at the turbine location.

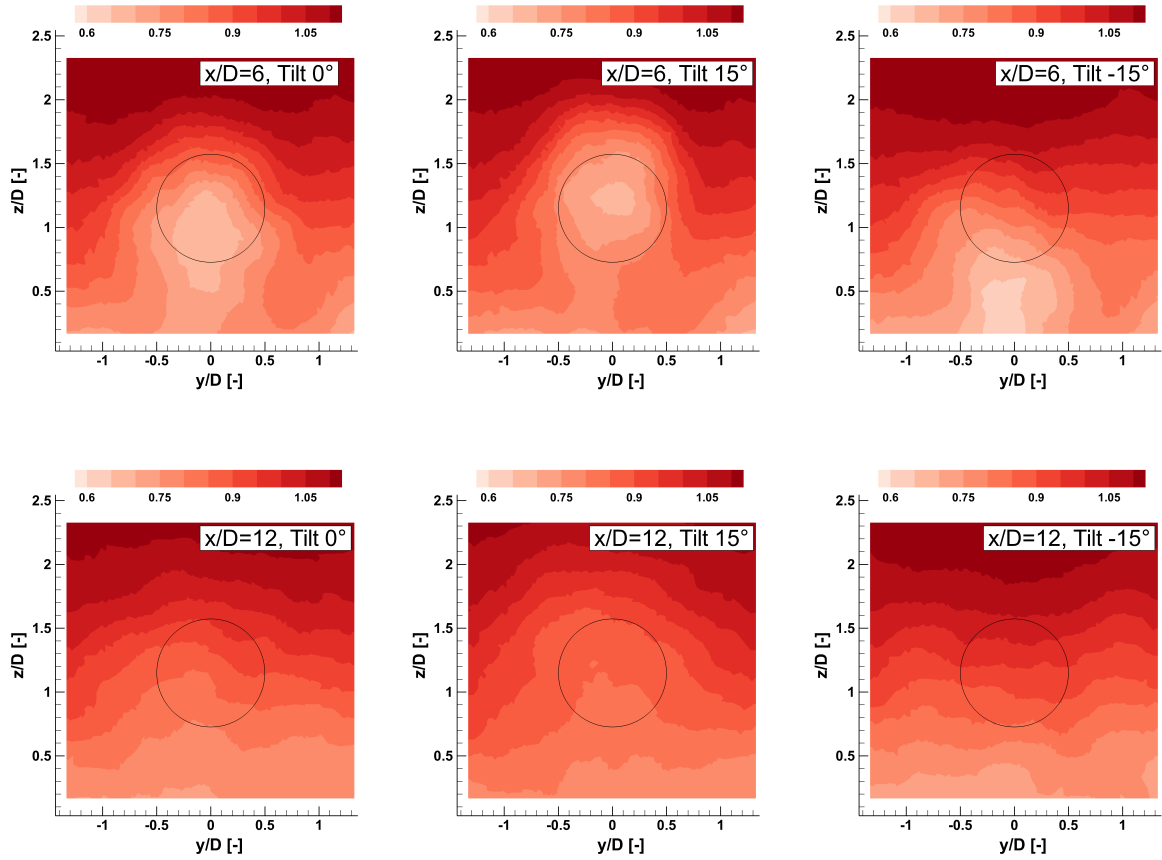


**Figure 4.** Absolute percent error between S-PIV and CFD time-averaged streamwise flow speed 5D downstream of the rotor, for three tilt angles. The black circle denotes the rotor circumference.

wake was obtained from the longitudinal flow velocity component on the area of the rotor disk at various downstream positions, from 6 to 12D.

200 Figure 5 shows contours of the normalized time-average streamwise velocity component. For brevity, the results are shown only at two downstream distances (namely,  $x/D = 6$  and  $x/D = 12$ ) and for three rotor tilt angles ( $0^\circ$ ,  $15^\circ$  wake-up and  $-15^\circ$  wake-down). The deflection of the wake center is evident at  $x/D = 6$ , but changes in the flowfield are still noticeable even at  $x/D = 12$ .

205 Because of the non-uniformity of the sheared inflow, the wake center is deflected towards the ground by  $0.2D$  even for the aligned rotor case. This effect can also be appreciated in Fig. 6, which shows normalized velocity contours on the  $xz$  midplane for the same tilt angles. The flow has a higher momentum above the wake than below it. As a result, turbulent mixing is

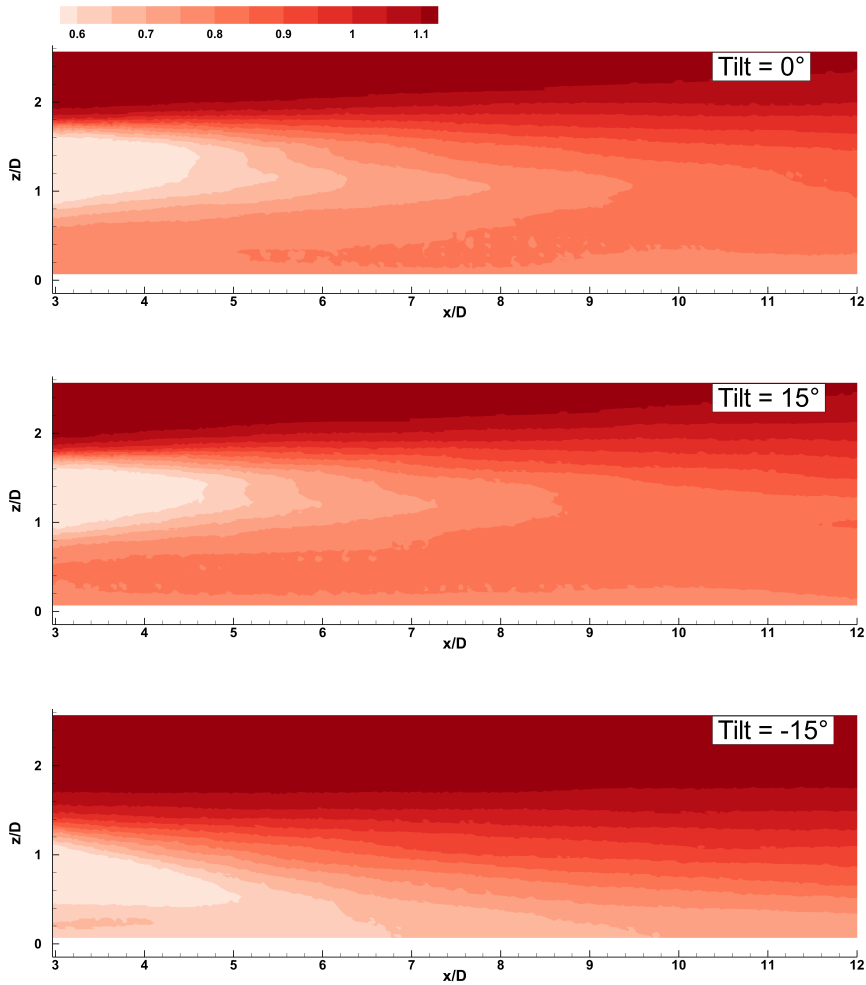


**Figure 5.** Contours of normalized streamwise velocity  $u/U_{\text{hub}}$  on  $yz$  crossplanes (orthogonal to the flow) for two downstream distances and three rotor tilt angles. The black circle denotes the rotor disk circumference.

stronger in the top part of the wake, resulting in a non-symmetrical vertical profile, as already observed in previous studies (Chamorro and Porté-Agel, 2009; Nanos et al., 2021). Therefore, as shown by the figures, the deflection of the wake towards the sea surface results in a higher energy flow within the downstream rotor area.

210 Furthermore, it appears that the direction of wake deflection has an effect also on how fast the wake recovers. The recovery was calculated based on the integral of the speed  $\langle u \rangle$  computed over a square area of size  $2.5D$ -by- $2.5D$ , centered at hub height. This area is sufficiently large to enclose the wake for all simulated tilt misalignment cases. The value of the integral at  $x/D = 2$  was considered as a reference, resulting in the following expression of the recovery ratio:

$$R_w = \frac{\langle u \rangle}{\langle u \rangle_{2D}}. \quad (2)$$

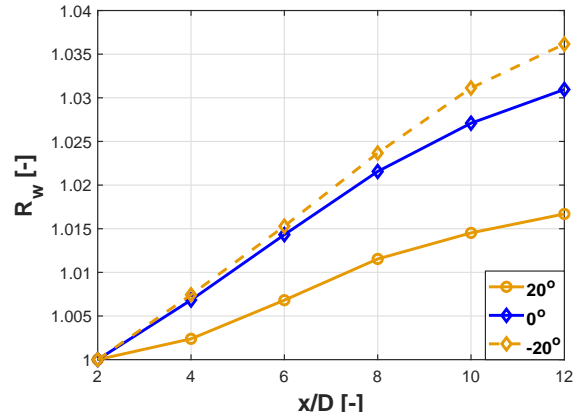


**Figure 6.** Contours of normalized streamwise velocity  $u/U_{\text{hub}}$  on the  $xz$  longitudinal midplane for three rotor tilt angles.

215 Figure 7 shows the wake recovery ratio for the tilt angles  $0^\circ$ ,  $20^\circ$  (wake-up), and  $-20^\circ$  (wake-down). For the wake-down (negative) tilting the recovery rate, i.e. the slope of the linear best fit, is slightly higher than for the untilted case and almost double the one of the wake-up (positive) tilt case.

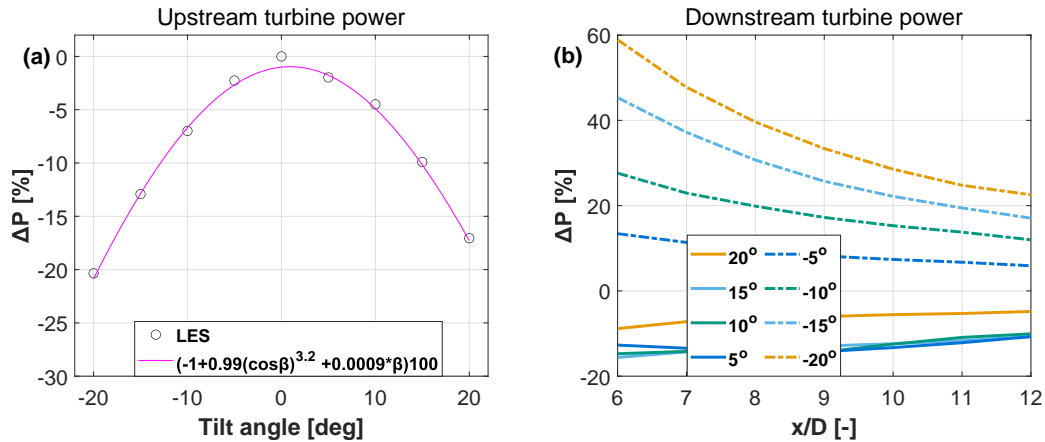
### 3.3 Effects of tilt on power

220 Figure 8a reports the percent power drop for the wake-deflecting wind turbine as a function of the rotor tilt angle  $\beta$ . As expected, tilt misalignment reduces the power capture of the turbine, similarly to the classical yaw misalignment case (Campagnolo et al., 2016a). The results of the figure correspond to the configuration shown in Fig. 2a, where the rotor is facing away from the other two columns; in this and other cases, pitching the platform generates a vertical translation of the rotor that, in a sheared inflow,



**Figure 7.** Wake recovery ratio  $R_w$  for  $0^\circ$  (untilted),  $20^\circ$  (wake-up), and  $-20^\circ$  (wake-down) rotor tilt angle.

causes an extra variation of power capture. This effect is indeed visible in the figure, where positive pitch values are associated with a slightly higher power capture than the same negative pitch values. Because of this lack of symmetry, the discrete points were best fitted with the modified cosine law  $P = P_{\beta=0} (a(\cos \beta)^p + b\beta)$ , resulting in the values  $a = 0.99$ ,  $b = 9 \cdot 10^{-4}$ , and  $p = 3.2$ . For the same rotor, the power drop yaw exponent was found to be  $p \approx 2.01$  (Nanos et al., 2021). However, since that result was obtained in laminar inflow conditions, a direct comparison between these two exponent values is probably not completely appropriate.



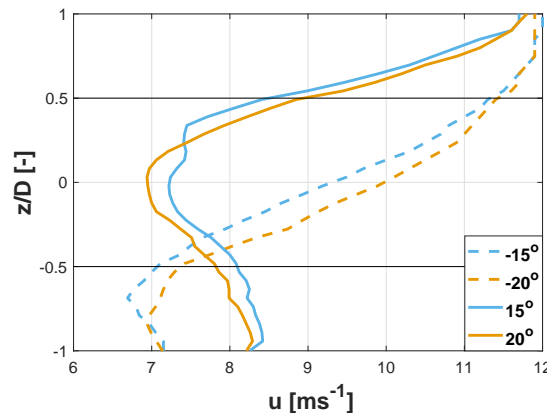
**Figure 8.** Power drop as a function of tilt angle for the wake-steering turbine (a). Power change in the wake as a function of tilt angle and downstream distance (b).

Figure 8b shows the percent power change in the wake as a function of upstream rotor tilt and downstream distance. For wake-down tilt angles, there is a substantial power gain due to the deflection of the wake out of the downstream rotor area, as shown in Fig. 5. The power gain grows with increasing tilt angles, since the wake is further deflected out of the rotor area. At

the same time, the upstream machine extracts less power from the flow, resulting in a slightly weaker wake. Furthermore, the power gain decreases with increasing turbine spacing, because of wake recovery.

For wake-up tilt angles, the behavior of the power available in the wake is markedly different, and power drops for all tested tilt angles. In fact, as previously observed with the help of Fig. 6, the upper part of the wake recovers substantially faster than the lower part. Hence, by pushing the wake upwards, a lower energy flow is moved into the rotor disk area, reducing power capture downstream.

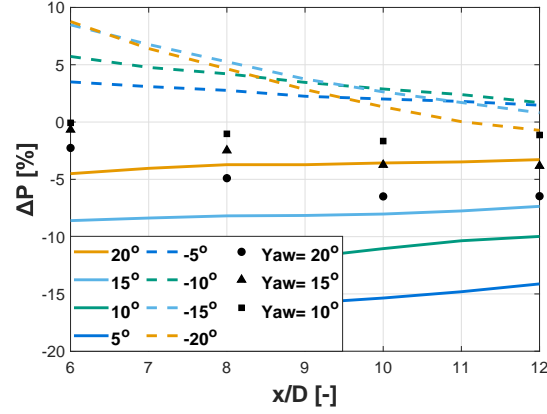
Additionally, it appears that for wake-up tilt angles the power of the second wind turbine is fairly insensitive to the tilt misalignment of the upstream rotor, in contrast to the wake-down case. This effect can be explained with the help of Fig. 9, which shows vertical profiles of the streamwise velocity for various tilt angles at hub center and  $x/D = 6$ . The effect of increasing the tilt from  $-15^\circ$  to  $-20^\circ$  (wake-down) is quite clear, with the larger (negative) tilt angle leading to a higher speed within the rotor disk area. On the other hand, moving from  $15^\circ$  to  $20^\circ$  (wake-up) has a double-sided effect. On the one hand, the velocity drops in the upper part of the rotor disk area, since the wake center is deflected further up. However, on the other hand the upstream machine extracts less energy from the flow, which results into higher speeds in the lower part of the rotor area. These two effects counteract each other and, as a result, the power production of the downstream machine is relatively insensitive to the tilt angle for wake-up misalignments.



**Figure 9.** Vertical profiles of the longitudinal speed in the wake at  $x/D = 6$  for various tilt angles. Black lines denote the rotor upper and lower edges.

Finally, it is interesting to consider the combined gain-loss effects on the power output of the two-turbine cluster, which are shown in Fig. 10. For wake-up tilt angles, the cluster power is always less than in the baseline untilted case; this is an expected results since, as shown in Fig. 8, tilt misalignment has a negative impact on both machines. For wake-down tilt angles, the power gain for longitudinal spacings between 10-12D is around 2%, while for closer spacings it can reach up to 8%. The power gain is small but not negligible, considering the fact that it is observed in a cluster of only two turbines. In

fact, previous research has shown that wake deflection strategies can multiply their impact in deep arrays (Annoni et al., 2017; Cossu, 2020a, b).



**Figure 10.** Cluster power change as a function of spacing between the turbines, for different tilt misalignment angles (solid and dashed lines). Black markers denote the change in cluster power for different yaw misalignment angles.

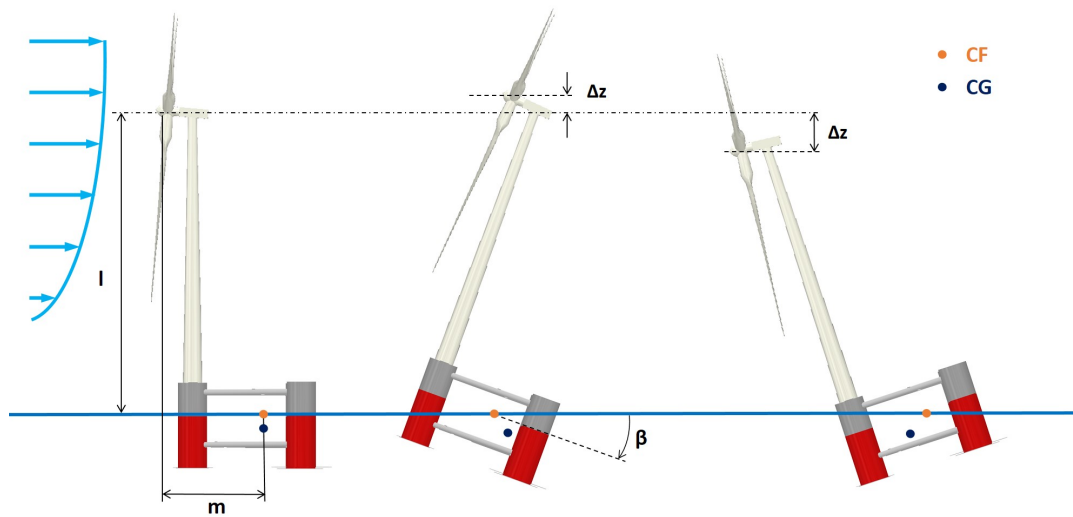
For a comparison with the more popular method of wind farm control by lateral wake deflection, the same simulation set-up was used to implement lateral – as opposed to vertical – misalignment for three different yaw angles, namely 10°, 15°, and 20°. The results are reported in Fig. 10 using black markers, and indicate that – for similar misalignment angles – vertical deflection towards the ground outperforms lateral deflection. However, this finding is clearly set-up specific, and different layouts and ambient conditions might lead to different results. This highlights another important consideration: the two techniques of lateral and vertical steering should not be seen as antagonistic, but rather they could be used together in synergy to achieve the best possible result depending on the layout and operating condition.

### 3.4 Effect of the configuration

The configuration of the floating platform may introduce additional parameters into the problem. For example, with reference to Platform A, pitching results in a vertical translation of the hub (see Fig. 11). The magnitude of this vertical translation  $\Delta z$  depends on the geometric characteristics of the platform-turbine assembly. For the case shown in the figure, the vertical displacement can be computed as

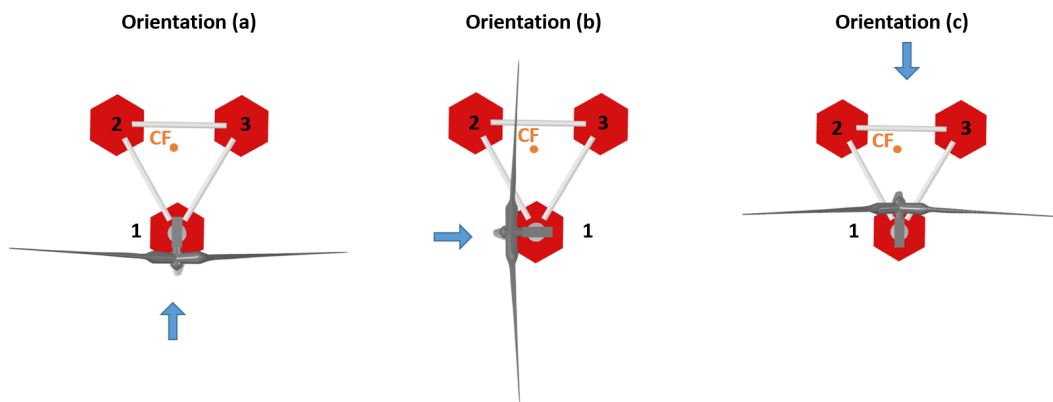
$$\Delta z = \sin \left( \tan^{-1} \left( \frac{l}{m} \right) + \beta \right) \left( \sqrt{l^2 + m^2} \right) - l, \quad (3)$$

where  $m$  and  $l$  are the horizontal and vertical distances, respectively, between the hub and the center of rotation, and  $\beta$  is the pitch angle of the platform (Fig. 11). The center of rotation is considered fixed at the centroid of the platform waterplane area (center of flotation – indicated as CF in the figure), which is a good approximation for small pitch angles (Newman, 2018). The vertical displacement also depends on the turbine orientation with respect to the platform (Fig. 12). For example, consider



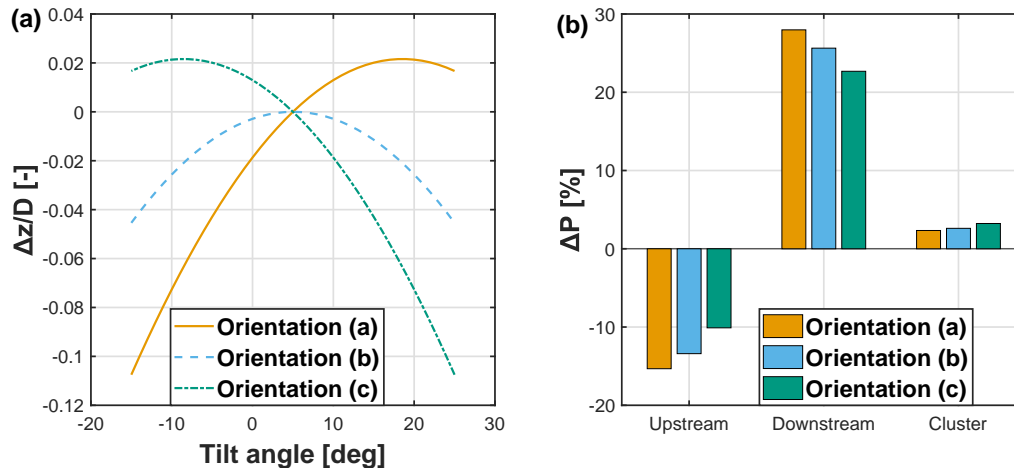
**Figure 11.** Schematic representation of the effects of platform pitch on rotor hub height, considering Platform A. CF: center of flotation; CG: center of gravity;  $\beta$ : platform pitch angle.

the situation of Fig. 11, which corresponds to orientation (a) of Fig. 12. In this case, the rotor center is translated downwards for a wake-down pitching of the platform. However, the opposite happens for orientation (c), where a wake-down pitching of the platform moves the rotor center upwards. Clearly, the ensuing effects on the rotor power and its wake also depend on the amount of shear of the inflow.



**Figure 12.** Top view of three different turbine orientations with respect to the platform, in the case of Platform A. The blue arrow shows the incoming wind direction. Numbers identify the platform columns.

275 Figure 13a shows the relation between rotor tilt angle and the normalized vertical translation of the hub, for the three different turbine orientations of Fig. 12; these conditions provide an envelope, within which all other possible conditions are contained. For Platform B, where the turbine is placed at the center of the floater, this effect is negligible, and all turbine orientations coincide (with a maximum 2% deviation) with orientation (b) of Fig. 12.



**Figure 13.** Normalized vertical translation of the rotor center as a function of rotor tilt angle for three different turbine orientations (a). Percent power change with respect to the baseline untilted case for a  $-10^\circ$  (wake-down) deflection at a 10D downstream distance, for three orientations of the turbine with respect to the floater (b).

The vertical translation of the hub caused by platform pitch can have two effects. First, it slightly shifts the wake position  
 280 in the vertical direction. Second, in case of a sheared inflow, it exposes the rotor to a slightly faster or slower wind speed. In the current set-up and inflow conditions, it was found that the upstream machine loses approximately 5% of power for a 0.1D vertical movement towards the sea surface following an about  $15^\circ$  pitching. This loss of power is added to the one caused by tilt misalignment.

It is clear that these effects are strongly dependent on the turbine-platform configuration (for example, they are nearly absent  
 285 for the Platform B case), operating conditions and inflow. Therefore, it is difficult to provide a general assessment of their importance. However, in an effort to assess their potential relevance, it was decided to quantify their boundaries in the worst case scenario of Platform A, where the position of the turbine at the very periphery of the floater exacerbates these effects. Figure 13b shows the percent power change with respect to the baseline untilted case for the upstream turbine, the downstream turbine, and the whole cluster. The spacing between the turbines is equal to 10D. As expected, results indicate that the different turbine  
 290 orientations have opposite effects on the upstream and downstream machines. For example, when compared to orientation (a), orientation (b) has a better performance for the upstream machine, but a worse one for the downstream turbine. For the cluster power, orientation (c) exhibits the best results with a 2.6% power increase, whereas B and A yield increases of 2.3% and



2.0%, respectively. These results apply to a sheared inflow exponent of 0.2, and would be correspondingly reduced/amplified by less/more pronounced shears.

## 295 4 Assessment of fatigue and ultimate loads

The feasibility of the proposed vertical wake deflection technique was verified with respect to its effects on structural loading. The goal here is not to precisely characterize the loading of the pitched configurations, but rather to reveal potential unrealistic load increases on the principal structural elements, which cannot be accommodated through confined design modifications.

### 4.1 Simulation set-up

300 Structural loads were calculated with the comprehensive hydro-aero-servo-elastic analysis tool hGAST (Manolas et al., 2015; Manolas, 2015; Manolas et al., 2020) for the 10 MW reference turbine mounted on the tri-spar concrete floater (Platform B). Mooring lines were modelled using non-linear truss elements, without modifications with respect to the original mooring system of the floater. Load analyses were performed for the baseline untilted configuration, and with the platform pitched by 20° in both wake-up and wake-down directions. The analysis considered medium sea-severity conditions, characterized by a  
 305 50-year significant wave height of 10.9 m, a peak period of 14.8 s, and a water depth of 180 m; typical offshore wind conditions were considered, characterized by high mean speeds and moderate turbulence levels, corresponding to wind class 1B.

Simulations were conducted for a subset of the most critical design load cases (DLCs) of the IEC 61400-3 standard (IEC, 2008), including both extreme and fatigue conditions. The reduced test matrix is reported in Table 3.

**Table 3.** Definition of DLCs for the time-domain hydro-aero-servo-elastic analysis.

DLC	Wind	Wave	Bins ( $\text{ms}^{-1}$ )	Yaw (deg)	Wave (deg)	Safety factor
1.2	NTM	NSS	3-25, step 2	0	0	-
1.3	ETM	NSS	11-25, step 2	8	0	1.35
1.6	NTM	ESS	11-25, step 2	8	0	1.35
6.1	EWM	SSS	50	0, 8	0, 30	1.35
6.2	EWM	SSS	50	+/- 30	+/- 30	1.10

A list of power production (normal operation) cases covering a wide operational range of wind and wave conditions are  
 310 considered in the 1.x-series. In the table, NTM and ETM refer to the normal and extreme turbulence models, respectively, while NSS and ESS refer to the normal and extreme sea states, respectively. Since wake steering is used only in the partial load region, power production simulations for the pitched platform case are performed for wind speeds up to  $13 \text{ ms}^{-1}$ , to include the next speed bin just above rated (which is equal to  $11.4 \text{ ms}^{-1}$  for this turbine).

DLC 1.2 corresponds to normal operation of the floating turbine in normal turbulence and sea state, and it is used for  
 315 estimating the fatigue limit state (FLS). DLCs 1.3 and 1.6 correspond to extreme wind/wave conditions, and are used to estimate the ultimate limit state (ULS). Clearly, there is no actual benefit in energy production from using wake steering control when

extreme wave conditions are anticipated or encountered (ESS conditions of DLC 1.6). Therefore, it is reasonable to assume that ballast control for wake steering is shut down in these conditions. Weather forecast and sensors (e.g. accelerometers, buoys, etc.) could be used to identify such conditions. However, since the response time of the control system is relatively slow (in the order of minutes, as indicated later in Sect. 5), DLC 1.6 was retained in the analyses to assess the effects of a system failure to timely set back the platform to its reference position.

DLCs 6.x correspond to operation under storm conditions, during which the turbine is in idling mode (combined with a grid loss in DLC 6.2). Typically, as a result of the loss of the grid, yaw control is disabled, possibly leading to extreme yaw misalignment angles. In many circumstances, such large angles drive the maximum loads on the rotor and the turbine. In the present analysis, misalignments of  $0^\circ$  and  $8^\circ$  in the wind direction and  $0^\circ$  and  $30^\circ$  in the wave direction were considered in DLC 6.1 (normal idling operation), while  $\pm 30^\circ$  wind misalignment and co-directional waves were considered in DLC 6.2 (idling operation combined with grid loss). It is noted that independent studies of an onshore version of the DTU 10 MW turbine have shown that yaw angles of  $\pm 30^\circ$  are the most critical in terms of maximum loads (Wang et al., 2017).

Before conducting the time domain simulations, steady-state simulations were performed, considering only hydrostatics and gravity but no wind and wave excitation, to estimate the required ballast movement and to confirm the hydrostatic stability of the tilted platform. Furthermore, a modal analysis of the overall system revealed that pitching has extremely limited changes on the natural frequencies, as shown in Table 4.

**Table 4.** Eigenvalues (Hz) of the coupled floating system for three platform pitch angles ( $0^\circ$ ,  $-20^\circ$ , and  $20^\circ$ ).

Mode	Pitch= $0^\circ$	Pitch= $-20^\circ$	Pitch= $20^\circ$
1 Floater Surge	0.006	0.006	0.006
2 Floater Sway	0.006	0.006	0.006
3 Floater Yaw	0.014	0.014	0.014
4 Floater Pitch	0.043	0.047	0.046
5 Floater Roll	0.043	0.045	0.047
6 Floater Heave	0.060	0.061	0.061
7 1st Tower Side-side	0.383	0.375	0.381
8 1st Tower Fore-aft	0.400	0.398	0.391
9 1st Rotor Edgewise Symmetric	0.541	0.539	0.540
10 1st Rotor Flapwise Yaw	0.562	0.560	0.561
11 1st Rotor Flapwise Tilt	0.600	0.599	0.598
12 1st Rotor Flapwise Symmetric	0.646	0.646	0.646
13 1st Rotor Edgewise Vertical	0.928	0.928	0.928
14 1st Rotor Edgewise Horizontal	0.941	0.940	0.941

The first-order hydrodynamic operators were re-calculated for both tilted floaters. The hydrodynamic problem considers the floater interacting with the incoming waves, and it is modelled using the hybrid integral equation method freFLOW (Manolas,

335 2015), which solves the 3D Laplace equation using the Boundary Element Method in the frequency domain. The solution procedure provides the exciting loads, the added masses and damping coefficients, the response amplitude operators (RAOs) of the floater, the hydrodynamic pressure on the wet surface of the floater, as well as the linearized hydrostatic stiffness matrix taking into consideration the exact “mean” geometry of the floater. Comparisons of the surge ( $F_{\text{surge}}$ ) and heave ( $F_{\text{heave}}$ ) exciting force components and the pitch exciting moment ( $M_{\text{pitch}}$ ) are shown in Fig. 14a-c. Results are normalized by gravity  $g$ , water  
340 density  $\rho$ , and wave amplitude  $A$ . The figure shows that the tilting of the floater (in either direction) has a relatively small effect on wave excitation loads. Higher localized differences (in the frequency range  $0.5\text{-}1.5\text{ rads}^{-1}$ ) are noted in the pitching moment and the heaving force. Moreover, the pitching of the floater in both directions increases the heave wave exciting loads, by the pressure loads that are generated over the inclined cylindrical surfaces of the columns.

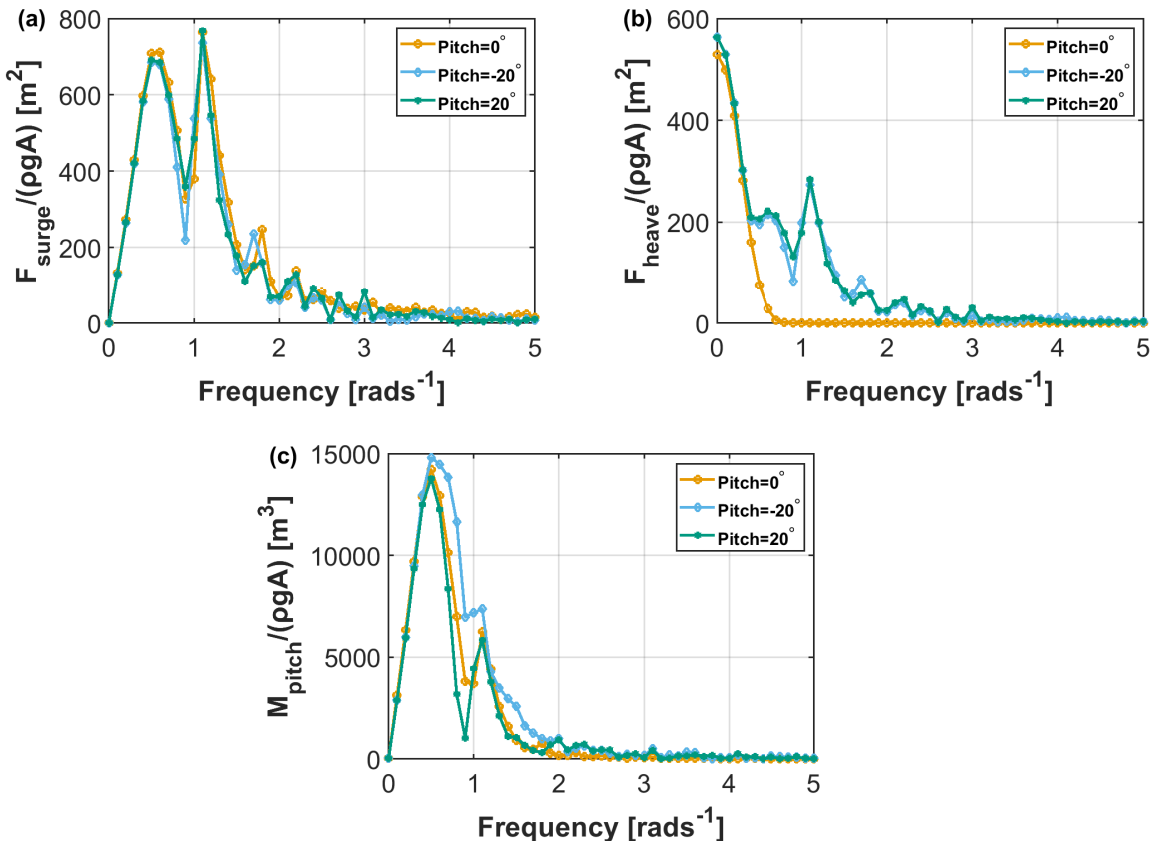
The system did not exhibit any dynamic instability for all simulated pitch angles and operating conditions. For DLC 1.6,  
345 which corresponds to an extreme sea state, the platform oscillated around a mean  $20^\circ$  pitch attitude with an oscillation amplitude of approximately  $4^\circ$ . This showed that the system can reach approximately  $24^\circ$  of pitch without tipping over. However, a more complete analysis would be necessary to verify stability in other extreme conditions, such as sudden drops in the wind or emergency shutdowns, where rapid changes in thrust could in principle lead to even larger pitch angles.

#### 4.2 Effects on damage equivalent and ultimate loads

350 Table 5 reports lifetime damage equivalent loads (DELs) of the two tilted configurations, comparing them with the ones of the untilted baseline case. DEL calculations are solely based on load time series from DLC 1.2, neglecting parked conditions and startup/shutdown sequences. Lifetime DELs are obtained considering a typical Weibull distribution with  $C = 11.3\text{ ms}^{-1}$  and  $k = 2$ ,  $10^7$  reference cycles and a lifetime of 20 years. The S-N curve exponents  $m = 4, 8, \text{ and } 10$  are used for the tower/mooring lines, drivetrain, and blades, respectively. Results indicate that blade, drivetrain and tower FLS loads are barely  
355 affected by the tilting of the turbine in either direction. Overall, there is a slight reduction in the edgewise loads, which is higher (5%) for wake-up pitching. This is explained by the fact that the component of the weight load in the rotor plane decreases as the turbine is tilted. The asymmetry between the wake-down and wake-up case is due to the built-in  $5^\circ$  up tilt angle of the rotor, which increases the overall rotor tilt for wake-up inclination of the turbine and visa-versa. Flapwise bending moments remain unaffected. Tower bending moments slightly increase for wake-down pitching, whereas they slightly decrease  
360 for wake-up pitching. A maximum increase of 2% is noted on tower base moments. Tower yaw moments slightly decrease in both configurations.

The main effect of pitching the platform is seen on the mooring line loads, specifically in the case of wake-down pitch. An increase of 13% and 12% is noted on the tension load at fairleads and at the anchor positions, respectively. On the other hand, only a minor increase of 1% is observed for the wake-up pitch case. DEL estimates are derived by averaging over the three  
365 mooring lines.

Regarding ultimate loads, it was found that in all cases loads were driven by DLCs outside of the operational envelope of the ballast control system (i.e., DLC 1.6 or DLC 6.x corresponding to extreme sea state or parked/idling operation, or at wind speeds higher than the wake-steering cut-off speed of  $13\text{ ms}^{-1}$ ). Results are summarized in Table 6, which also reports the



**Figure 14.** Comparison of the wave exciting loads for platform pitch angles 0°, 20° (wake-up), and -20° (wake-down). Surge (a); heave (b); pitch (c).

originating DLCs. Changes in loads are null for all cases where ULS are found in DLCs other than 1.6 or 1.3 up to 13 ms<sup>-1</sup>,  
 370 because the ballast control system is assumed to be deactivated in such conditions. When ultimate loads are originated in  
 DLC 1.6, the load change obtained when this DLC is excluded has been indicated in parenthesis.

Results show that blade extreme loads are only slightly affected by the platform pitching (maximum increase of 5-6%), while  
 drivetrain loads remain unaffected. Larger increases in ultimate loads are noted on tower bending moments. A 19% increase in  
 the combined bending moment is seen in the case of wake-down pitching, whereas a substantially higher increase (40%) is seen  
 375 in the case of wake-up pitching. The driving load case for tower base loads is DLC 1.6 around rated wind speed, both for the  
 baseline and the pitched configurations. The difference between wake-down and wake-up pitch for tower base fore-aft moment  
 is due to the direction of thrust. For both pitch angles, the moment arm of the weight of the rotor nacelle assembly (RNA)  
 increases, with a corresponding increase of the bending moment at the foot of the tower. However, the fore-aft moment due to  
 the rotor thrust adds to the moment caused by the RNA weight for the wake-up pitch case, whereas it reduces the moment in  
 380 the wake-down pitch case.

**Table 5.** Comparison of lifetime DELs for platform pitch angles  $0^\circ$ ,  $20^\circ$  (wake-up), and  $-20^\circ$  (wake-down).

Sensor	Units	Pitch= $0^\circ$	Pitch= $-20^\circ$	Pitch= $20^\circ$
Blade root edgewise moment	kNm	28 503	-1%	-5%
Blade root flapwise moment	kNm	31 253	0%	0%
Blade root torsion moment	kNm	454	2%	-2%
Drivetrain yaw moment	kNm	28 878	0%	0%
Drivetrain tilt moment	kNm	28 678	0%	0%
Drivetrain torsion moment	kNm	3 356	5%	0%
Tower base side-side moment	kNm	77 492	2%	-2%
Tower base fore-aft moment	kNm	272 255	2%	-6%
Tower base yaw moment	kNm	27 160	-1%	-2%
Tension at fairleads	kN	176	13%	1%
Tension at anchors	kN	169	12%	1%

**Table 6.** Comparison of ultimate loads for platform pitch angle  $0^\circ$ ,  $20^\circ$ , (wake-up) and  $-20^\circ$  (wake-down).

Sensor	Units	Pitch= $0^\circ$		Pitch= $-20^\circ$		Pitch= $20^\circ$	
		ULS	DLC	ULC	DLC	ULC	DLC
Blade root edgewise moment	kNm	32 717	$6.2 - 50 \text{ ms}^{-1}$	0%	$6.2 - 50 \text{ ms}^{-1}$	0%	$6.2 - 50 \text{ ms}^{-1}$
Blade root flapwise moment	kNm	83 212	$1.6 - 13 \text{ ms}^{-1}$	5% (0%)	$1.6 - 13 \text{ ms}^{-1}$	5% (0%)	$1.6 - 13 \text{ ms}^{-1}$
Blade root torsion moment	kNm	1 309	$6.2 - 50 \text{ ms}^{-1}$	0%	$6.2 - 50 \text{ ms}^{-1}$	0%	$6.2 - 50 \text{ ms}^{-1}$
Blade root combined moment	kNm	83 541	$1.6 - 13 \text{ ms}^{-1}$	5% (0%)	$1.6 - 13 \text{ ms}^{-1}$	6% (0%)	$1.6 - 13 \text{ ms}^{-1}$
Drivetrain yaw moment	kNm	52 995	$1.3 - 25 \text{ ms}^{-1}$	0%	$1.3 - 25 \text{ ms}^{-1}$	0%	$1.3 - 25 \text{ ms}^{-1}$
Drivetrain tilt moment	kNm	55 680	$1.6 - 25 \text{ ms}^{-1}$	0%	$1.6 - 25 \text{ ms}^{-1}$	0%	$1.6 - 25 \text{ ms}^{-1}$
Drivetrain torsion moment	kNm	17 227	$1.3 - 25 \text{ ms}^{-1}$	0%	$1.3 - 25 \text{ ms}^{-1}$	0%	$1.3 - 25 \text{ ms}^{-1}$
Drivetrain combined moment	kNm	63 406	$1.3 - 25 \text{ ms}^{-1}$	0%	$1.3 - 25 \text{ ms}^{-1}$	0%	$1.3 - 25 \text{ ms}^{-1}$
Tower base side-side moment	kNm	507 594	$6.2 - 50 \text{ ms}^{-1}$	0%	$6.2 - 50 \text{ ms}^{-1}$	0%	$6.2 - 50 \text{ ms}^{-1}$
Tower base fore-aft moment	kNm	808 458	$1.6 - 13 \text{ ms}^{-1}$	19% (0%)	$1.6 - 13 \text{ ms}^{-1}$	39% (0%)	$1.6 - 11 \text{ ms}^{-1}$
Tower base yaw moment	kNm	55 476	$1.3 - 25 \text{ ms}^{-1}$	0%	$1.3 - 25 \text{ ms}^{-1}$	0%	$1.3 - 25 \text{ ms}^{-1}$
Tower base combined moment	kNm	808 458	$1.6 - 13 \text{ ms}^{-1}$	19% (0%)	$1.6 - 13 \text{ ms}^{-1}$	40% (0%)	$1.6 - 11 \text{ ms}^{-1}$
Tension at fairleads	kN	6 403	$1.6 - 11 \text{ ms}^{-1}$	7% (0%)	$1.6 - 11 \text{ ms}^{-1}$	-2% (0%)	$6.1 - 50 \text{ ms}^{-1}$
Tension at anchors	kN	5 965	$6.1 - 50 \text{ ms}^{-1}$	7% (0%)	$1.6 - 11 \text{ ms}^{-1}$	0%	$6.1 - 50 \text{ ms}^{-1}$

The tension of the mooring lines increases when the platform is pitched wake-down (by 7%, caused by DLC 1.6), whereas slightly decreases (by 2%) in case of wake-up pitching. In the latter case, the tension loads in the mooring lines obtained in DLC 1.6 are smaller than those obtained in DLC 6.1, which becomes the driving load case.

385 Overall the above results indicate that the ballast system should be deactivated when extreme wave conditions occur. This is especially true for the tower base bending moment, which experiences the highest increase. It is worth noting, however, that the observed 40% load increase comes from the wake-up platform attitude, which, as shown in §3.3, is not capable of boosting power output. For the more interesting wake-down pitch case, the increase in tower-base combined moment is much more contained. Most importantly, based on the reasonable assumption that platform pitching is deactivated for DLC 1.6 conditions, it appears that ballast control will not increase the ultimate loads on the structure.

## 390 5 Ballast movement estimate

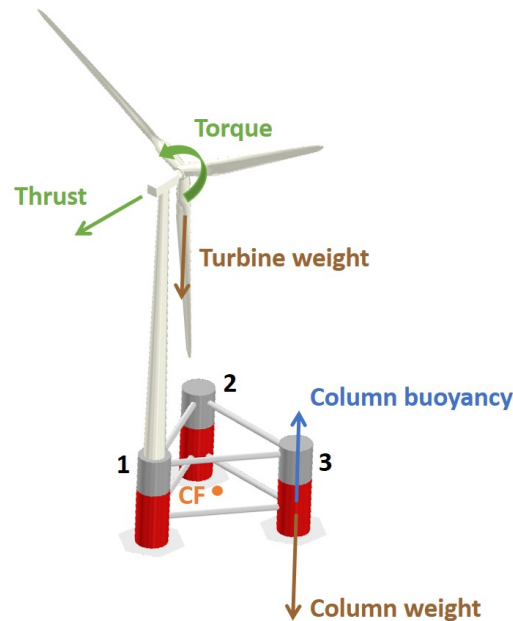
Next, the hydrostatics of floating bodies was used to estimate the differential ballast control necessary to pitch the two floating turbine configurations considered here. For a platform that is resting horizontally, all forces and moments are in equilibrium. If ballast is moved in a specific direction, the center of gravity will move accordingly. As a consequence, the platform will pitch moving the center of buoyancy in the same direction, until a new equilibrium condition is reached (Patel, 1989). The  
395 calculations presented here are only indicative and, here again, specific to the configurations considered. For instance, some assumptions have to be made regarding the water ballast pumping system. Moreover, the orientation of the turbine with respect to the floater also plays a role for Platform A, since the ballast movement required for orientation (b) is different from the one necessary for orientations (a) and (c) (see Fig. 12).

The analysis is performed for a rotor tilt angle of  $-15^\circ$  (wake-down), which is largest tilt angle (worst case scenario)  
400 associated with significant power gains. Given the  $5^\circ$  up-tilt of the DTU 10 MW turbine, the platform is pitched forward by  $20^\circ$  to achieve this attitude. Based on the findings of §3.4, for Platform A the analysis is conducted for orientation (c), which is the most beneficial case in terms of cluster power gain. As previously noted, due to the more symmetric configuration of Platform B, the turbine-platform orientation does not play a role in that case.

For Platform B, the necessary ballast movement was found from static simulations in horizontal and pitched attitudes using  
405 the hGAST software (Manolas et al., 2015; Manolas, 2015; Manolas et al., 2020).

Since a similar structural model of Platform A was not available, in this case ballast movement was estimated based on simpler equilibrium of forces and moments for the horizontal and pitched configurations. The analysis considered the mass distribution of the platform and of the turbine, the turbine thrust and torque, and the buoyancy forces from the three columns (Fig. 15). The forces transmitted to the platform by the mooring lines were neglected from the analysis, because the pitch/roll  
410 mooring stiffness is small for catenary lines compared to the hydrostatic and gravitational stiffness. This assumption was validated using hGAST for Platform B, where the mooring lines were found to contribute only 5% of the total restoring force. Since no detailed design for Platform A was available, the precise displacement of the column center of gravity and buoyancy could only be estimated. However, the sensitivity of the results to these quantities is relatively low. For example, it was verified

that, even with a 30% deviation from the estimated values (which is an exaggerated assumption), the final results of the ballast calculations are affected by less than 4%. To verify the calculation method used for Platform A, the same approach was used also for Platform B, and the results were compared to the ones obtained with the hGAST software, yielding only a 6% difference. Such accuracy was deemed sufficient for the preliminary nature of the present investigation.



**Figure 15.** Forces and moments considered for the ballast calculations. For clarity, only the forces on one of the columns are shown.

Results indicate that the necessary ballast movement to achieve a  $-20^\circ$  wake-down pitch attitude for Platform A is approximately equal to  $500 \text{ m}^3$ . Considering configuration (c) (Fig. 12c and 15), assuming that water can be moved between each column by dedicated 60 kW pumps, two pumps are used to move water in order to lift column 1 and sink columns 2 and 3. As the platform pitches towards a  $-20^\circ$  attitude, a height difference between column 1 and columns 2-3 is created. This means that the ballast moves towards a lower position, which facilitates the maneuver. This change of attitude necessitates of approximately 5 minutes and 2 kWh (Menon, 2004). When it is time to return the platform to the horizontal attitude, the situation is different, since the ballast has to move to a higher position. In this case, the maneuver takes approximately 13 minutes and costs roughly 26 kWh.

For the same  $-20^\circ$  wake-down pitch attitude, the ballast required for Platform B is equal to  $2900 \text{ m}^3$ . Given the very large size and weight of this configuration, assuming pumps of triple the power than for case A, the first maneuver (from horizontal position to  $-20^\circ$  pitch attitude) takes around 10 minutes, and the energy expenditure is of about 13 kWh. The return to a horizontal attitude requires slightly more than 20 minutes and costs 132 kWh.

430 Considering two reference turbines spaced 10 rotor diameters apart, exposed to an ambient wind speed of  $9 \text{ ms}^{-1}$ , the front turbine produces 5 MW and the downstream machine yields 3.5 MW. In such a condition, tilting the first turbine would improve the cluster power production by roughly 3%, i.e. 250 kW (which is a conservative assumption, given the results of §3.4). Given that the relation between tilt angle and power gain is approximately linear, Platform A and B would respectively need about 13 and 51 minutes of tilted operation (including the transition time from horizontal to target tilt angle) to break even the energy expenditure caused by tilting, and start having a net energy gain.

As previously mentioned, the orientation of the turbine with respect to the platform plays a role for Platform A. In fact, the ballast movement required for orientation (b) is three times larger than for orientations (a) and (c); this effect is however negligible for Platform B.

440 Notwithstanding the variety of possibilities and the room for further optimization, these results indicate that tilt control by differential ballast is a rather slow control input that should be activated in fairly steady wind conditions; possibly, faster changes in ambient conditions could be tracked by lateral yaw misalignment. Additionally, the characteristics of the platform also play a role, with heavy configurations being at a significant disadvantage.

## 6 Conclusions

445 This paper has presented a technical feasibility assessment of vertical wake steering for floating wind turbines. Today the most mature wind farm control approach is lateral wake steering, a method that is attracting significant attention as the wind energy community is trying to alleviate the adverse effects of turbine wake interaction within wind plants. One of the reasons behind the success of lateral deflection is the fact that it can be implemented without a radical redesign of the turbine. The present study is an attempt at verifying if a similar approach is possible also for vertical steering in floating turbines.

450 The study is based on two different floating platforms and one reference 10 MW wind turbine. These platforms feature ballast tanks for balancing the structure, and incorporate an active ballast control system for keeping the platform aligned with the water surface (Roddier et al., 1997). The idea explored here is to reuse or adapt such systems in order to tilt the rotor and deflect the wake vertically.

455 Results obtained with a combined simulation-experimental study indicate that, for two aligned wind turbines spaced 10-12 diameters apart, power gains reach about 2.6%, while for spacings of 6-8 diameters gains can increase to about 8%, similarly to the findings of previous research (Annoni et al., 2017; Cossu, 2020a; Bay et al., 2019). These gains are obtained with a  $-10^\circ$  wake-down rotor tilt angle that corresponds, due to the rotor up-tilt, to a  $-15^\circ$  pitch forward of the platform. Because of the direction of rotor up-tilt, smaller platform rotations would be necessary for downwind turbine configurations. Notwithstanding this possible advantage, downwind turbines were not considered in this work because they are effectively absent from the current market. However, they have other interesting characteristics for very large rotors that might possibly change this situation in the future (Loth et al., 2017).

The present study has only considered two turbines in full waked conditions, for a specific ambient shear and turbulence intensity. However, previous research has shown that power gains may further increase when considering a larger number of



turbines and more complex configurations (Annoni et al., 2017; Cossu, 2020a; Bay et al., 2019). In accordance with prior studies on vertical wake steering (Fleming et al., 2015; Annoni et al., 2017; Cossu, 2020a), the present results confirm that  
465 deflecting the wake towards the sea surface is more effective than deflecting it towards the sky. In fact, wake recovery is not symmetric when the wake develops within a boundary layer. Due to the vertical non-uniformity of the free stream, turbulent mixing and recovery are faster in the top than in the bottom part of the wake. Therefore, deflecting the wake towards the sea surface results into an air flow of higher momentum moving downwards and into the downstream rotor disk area, thereby boosting capture; the opposite happens when the wake is deflected upwards, resulting in a slower flow being lifted up towards the  
470 downstream rotor. Additional intra-plant phenomena happen when considering larger arrays and more complex configurations (Cossu, 2020a, b), further increasing power capture.

Another conclusion of the present study is that the geometric characteristics of the platform can have a substantial effect. According to intuition, it was found that a steel platform with smaller draft requires much less ballast movement compared to a concrete platform with greater draft. Specifically, the lighter-weight three-floater configuration of Platform A is able to  
475 transition from a horizontal no-steering condition to full steering in about 5 minutes. For a two-turbine cluster, it would take about 13 minutes from the beginning of the maneuver to compensate the expenditure due to tilting and start gaining power; on deeper arrays (Cossu, 2020a, b) this time might be substantially reduced, because of the larger power gains. On the other hand, longer maneuvering times and higher energy expenditures penalize heavy large-draft configurations as the one represented by Platform B. Ballast movement however also depends on additional details related to the geometry of the system. For example,  
480 the orientation of the turbine with respect to the platform can have an effect on ballast when the turbine is located directly above a column, because of the strong inertial asymmetry that it creates. Additional effects are related to vertical movements of the hub caused by pitching, resulting in small changes in power capture for sheared flow conditions, which can be beneficial or detrimental depending on the direction of the vertical motion. A more comprehensive analysis, reflecting the latest and most promising configurations, is necessary before final conclusions can be drawn on whether ballast movement is a viable  
485 option for implementing vertical steering by pitching. However, this initial study seems to indicate that the amount of water that needs to be moved, the time it will take to pitch and the energy that is required, are not unrealistically high, at least for the lighter-weight Platform A configuration. The present results also indicate that a lightweight steel configuration (like Platform A) with a central arrangement of the turbine (like Platform B) might seem to offer an interesting solution, worth investigating in future studies.

490 Even in the most beneficial conditions, this preliminary analysis clearly shows that rotor tilting by differential ballast control is a relatively slow control input. Therefore, vertical steering by this method should probably be used only to follow slow changes in wind conditions. On the other hand, lateral steering is able to operate on somewhat faster time scales. This seems to give a strong suggestion towards the study of integrated lateral-vertical steering control, which should try to combine these two complementary methods to maximize their synergies. Of course, steering is only one of the various wake manipulations  
495 techniques available, and it could be integrated with – for example – induction control. The optimal combination of techniques for affecting wake behavior is an active area of research in wind farm control, and further progress is anticipated.

Another key aspect related to the feasibility of the present wind farm control method is related to the loading experienced by the steering turbine. This problem was investigated by hydro-aero-servo-elastic simulations with reference to the Platform B concept, for which a complete structural model was available. This heavy platform with a large draft does not seem to be ideally suited to vertical steering, because of the large ballast movements that it requires. In hindsight, a loading study of the lighter weight Platform A would have been more appropriate; this was unfortunately not possible within the scope of the present project, because a detailed design of the Platform A concept was not available. Loads were evaluated for 20° pitch forward and pitch backward attitudes, considering both fatigue and ultimate loads, and they were compared to the design loads of the floating system when it is operated without vertical wake steering. The comparison was made under the assumption that steering is used only up to speeds just above rated, and that it would not be used in extreme sea and wind conditions. Regarding platform stability, it was found that the platform was hydrodynamically stable at the tested pitch angles even in extreme sea state conditions (DLC 1.6), although this system is not supposed to work in such conditions. This result is only indicative, and more exhaustive analyses are required to ensure that the platform can withstand, within the whole operational envelope, disturbances coming from, for instance, sudden wind drops, emergency shutdowns or critical failures of some key components. A detection system with appropriate redundancy might possibly be used to forecast adverse weather conditions and ensure safe behavior in operation, although the characteristics of such a system were not considered in this work.

Results indicate that there is only a minor effect on turbine fatigue loads, with an increase of about 5% being experienced by the drivetrain torsional moment. On the other hand, larger increases of about 12-13% were noted on the mooring system, which would have to be accordingly redesigned. Ultimate loads were not affected, since – for this turbine and platform – they are all produced in operational conditions where wake steering is not utilized. These results are promising, but here again more specific analyses – including the case of a tilted and wake-impinged machine – are needed before more conclusive answers can be given.

## Nomenclature

	$A$	Wave amplitude
520	$C_P$	Power coefficient
	$D$	Rotor diameter
	$F$	Force
	$M$	Moment
	$g$	Gravitational acceleration
525	$p$	Cosine law power loss exponent
	$P$	Power
	$R_w$	Wake recovery
	$U$	Ambient wind speed (time averaged)
	$u$	Streamwise velocity component (time averaged)

530	$x$	Streamwise coordinate (positive downstream)
	$y$	Crosswind coordinate (positive left, looking downstream)
	$z$	Vertical coordinate (positive up)
	$\beta$	Platform pitch angle
	$\rho$	Water density
535	ALM	Actuator-line method
	CFD	Computational fluid dynamics
	CF	Center of flotation
	DEL	Damage equivalent load
	DLC	Design load case
540	ETM	Extreme turbulence model
	EWM	Extreme wind model
	FLS	Fatigue limit state
	LES	Large-eddy simulation
	NSS	Normal sea state
545	NTM	Normal turbulence model
	S-PIV	Stereo-Particle image velocimetry
	SSS	Severe sea state
	ULS	Ultimate limit state

550 *Code and data availability.* Data from the CFD and hydro-aero-servo-elastic simulations is available upon request. MATLAB figure files that allow for the lossless extraction of results can be retrieved via the DOI [10.5281/zenodo.6799342](https://doi.org/10.5281/zenodo.6799342).

*Author contributions.* EMN conducted the experiments, contributed to the CFD simulations, performed all sizing analyses and contributed to the interpretation of the results; CLB devised the original idea of vertical wake steering by differential ballast control, collaborated in the interpretation of the results and supervised the overall work; ST contributed to the CFD simulations and data analysis; DIM and VAR  
555 performed the hydro-aero-servo-elastic analysis, and contributed to the analysis of the loading conditions on the turbine. EMN and CLB wrote the manuscript, except for Sect. 4 that was primarily authored by DIM and VAR. All authors provided important input to this research work through discussions, feedback and by improving the manuscript.

*Competing interests.* The contact author has declared that none of the authors has any competing interests.

*Acknowledgements.* The authors would like to thank Helena Canet at TUM for her input on the load analysis, and Dr. Antonis Daskalakis of  
560 Offshore Energy Systems SA for his advice on the platform sizing. Chengyu Wang and Filippo Campagnolo at TUM contributed to the work  
on the CFD simulations, while Giacomina Valerio Iungo, Kyle Jones, and Mario Rotea, all at UTD, supported the wind tunnel measurements  
at UTD.

## References

- Wind Turbines-Part 3: Design Requirements for Offshore Wind Turbines, Tech. rep., IEC 61400-3, 2008.
- 565 Annoni, J., Scholbrock, A., Churchfield, M., and Fleming, P.: Evaluating tilt for wind plants, American Control Conference Seattle, pp. 717–722, 2017.
- Azcona, J., Vittori, F., Schmidt, U., Savenije, F., Kapogiannis, G., Karvelas, C., Manolas, D. I., Voutsinas, S. G., Amann, F., Faerron-Guzman, R., and Lemmer, F.: D4.3.7: Design Solutions for 10MW Floating Offshore Wind Turbines, Tech. rep., INNWIND.EU, 2017.
- Bak, C., Zahle, F., Bitsche, R., Kim, T., Yde, A., Henriksen, L. C., Hansen, M. H., Blasques, J. P., Gaunaa, M., and Natarajan, A.: The DTU  
570 10-MW Reference Wind Turbine, Danish Wind Power Research 2013, Technical University of Denmark, DTU Wind Energy, 2013.
- Bay, C. J., Annoni, J., Martínez-Tossas, L. A., Pao, L. Y., and Johnson, K. E.: Flow control leveraging downwind rotors for improved wind power plant operation, in: American Control Conference (ACC), vol. 20, p. 2843–2848, IEEE, 2019.
- Burton, T., Sharpe, D., Jenkins, N., and Bossanyi, E.: Wind energy handbook, John Wiley & Sons, 2001.
- Campagnolo, F., Petrović, V., Schreiber, J., Nanos, E. M., Croce, A., and Bottasso, C. L.: Wind tunnel testing of a closed-loop wake de-  
575 flection controller for wind farm power maximization, Journal of Physics: Conference Series, 753, 032006, <https://doi.org/10.1088/1742-6596/753/3/032006>, 2016a.
- Campagnolo, F., Petrović, V., Schreiber, J., Nanos, E. M., Croce, A., and Bottasso, C. L.: Wind tunnel testing of a closed-loop wake deflection controller for wind farm power maximization, Journal of Physics: Conference Series, 753, 2016b.
- Campagnolo, F., Weber, R., Schreiber, J., and Bottasso, C. L.: Wind tunnel testing of wake steering with dynamic wind direction changes,  
580 Wind Energy Science, 5, 1273–1295, <https://doi.org/10.5194/wes-5-1273-2020>, 2020.
- Chamorro, L. P. and Porté-Agel, F.: A Wind-Tunnel Investigation of Wind-Turbine Wakes: Boundary-Layer Turbulence Effects, Boundary-Layer Meteorology, 132, 129–149, <https://doi.org/10.1007/s10546-009-9380-8>, 2009.
- Cossu, C.: Replacing wakes with streaks in wind turbine arrays, Wind Energy, <https://doi.org/10.1002/we.2577>, 2020a.
- Cossu, C.: Evaluation of tilt control for wind-turbine arrays in the atmospheric boundary layer, Wind Energ. Sci. Discuss., p. x, <https://doi.org/10.5194/wes-2020-106>, 2020b.
- 585 Cossu, C.: Wake redirection at higher axial induction, Wind Energy Science Discussions, 2020, 1–12, <https://doi.org/10.5194/wes-2020-111>, 2020c.
- Doekemeijer, B. M., Kern, S., Maturu, S., Kanev, S., Salbert, B., Schreiber, J., Campagnolo, F., Bottasso, C. L., Schuler, S., Wilts, F., Neumann, T., Potenza, G., Calabretta, F., Fioretti, F., and van Wingerden, J.-W.: Field experiment for open-loop yaw-based wake steering  
590 at a commercial onshore wind farm in Italy, Wind Energy Science, 6, 159–176, <https://doi.org/10.5194/wes-6-159-2021>, 2021.
- Energy, S. G. R.: <https://www.siemensgamesa.com/en-int/newsroom/2019/11/191126-siemens-gamesa-wake-adapt-en>, 2019.
- Fleming, P., Gebraad, M., Lee, S., van Wingerden, J., Johnson, K., Churchfield, M., Michalakes, J., Spalart, P., and Moriarty, P.: Simulation comparison of wake mitigation control strategies for a two-turbine case, Wind Energy, 18, 2135—2143, <https://doi.org/https://doi.org/10.1002/we.1810>, 2015.
- 595 Fleming, P., Annoni, J., Churchfield, M., Martínez-Tossas, L. A., Gruchalla, K., Lawson, M., and Moriarty, P.: A simulation study demonstrating the importance of large-scale trailing vortices in wake steering, Wind Energy Science, 3, 243–255, <https://doi.org/10.5194/wes-3-243-2018>, 2018.
- Fleming, P., King, J., Dykes, K., Simley, E., Roadman, J., Scholbrock, A., Murphy, P., Lundquist, J. K., Moriarty, P., Fleming, K., van Dam, J., Bay, C., Mudafort, R., Lopez, H., Skopek, J., Scott, M., Ryan, B., Guernsey, C., , and Brake, D.: Initial results from a field campaign of

- 600 wake steering applied at a commercial wind farm – Part 1, *Wind Energ. Sci.*, 4, 2135—2143, <https://doi.org/https://doi.org/10.5194/wes-4-273-2019>, 2019.
- Fleming, P., King, J., Simley, E., Roadman, J., Scholbrock, A., Murphy, P., Lundquist, J. K., Moriarty, P., Fleming, K., van Dam, J., Bay, C., Mudafort, R., Jager, D., Skopek, J., Scott, M., Ryan, B., Guernsey, C., and Brake, D.: Continued Results from a Field Campaign of Wake Steering Applied at a Commercial Wind Farm: Part 2, *Wind Energy Science Discussions*, 2020, 1–24, <https://doi.org/10.5194/wes-2019-104>, 2020.
- 605 Frederik, J. A., Doekemeijer, B. M., Mulders, S. P., and van Wingerden, J.-W.: The helix approach: Using dynamic individual pitch control to enhance wake mixing in wind farms, *Wind Energy*, 23, 1739–1751, <https://doi.org/https://doi.org/10.1002/we.2513>, 2020a.
- Frederik, J. A., Weber, R., Cacciola, S., Campagnolo, F., Croce, A., Bottasso, C., and van Wingerden, J.-W.: Periodic dynamic induction control of wind farms: proving the potential in simulations and wind tunnel experiments, *Wind Energy Science*, 5, 245–257, <https://doi.org/10.5194/wes-5-245-2020>, 2020b.
- 610 Guntur, S., M., J. J., B., J., Q., W., Sprague, A., M., Sievers, R., and Schrek, S. J.: FAST v8 verification and validation for a MW-scale wind turbine with aeroelastically tailored blades, *Wind Energy Symp.*, 2016.
- Jasak, H.: OpenFoam: open source CFD in research and industry, *Int. Nav. Arch. Ocean*, 1, 2009.
- Liu, Y., Li, S., Yi, Q., and Chen, D.: Developments in semi-submersible floating foundations supporting wind turbines: A comprehensive review, *Renewable and Sustainable Energy Reviews*, 60, 433–449, 2016.
- 615 Loth, E., Steele, A., Qin, C., Ichter, B., Selig, M. S., and Moriarty, P.: Downwind pre-aligned rotors for extreme-scale wind turbines, *Wind Energy*, 20, 1241–1259, <https://doi.org/10.1002/we.2092>, 2017.
- Manolas, D. I.: Hydro-aero-elastic analysis of offshore wind turbines, Ph.D. thesis, National Technical University of Athens, 2015.
- Manolas, D. I., Riziotis, V. A., and Voutsinas, S. G.: Assessing the importance of geometric non-linear effects in the prediction of wind turbine blade loads, *J. Comput. Nonlinear Dyn.*, 10, <https://doi.org/10.1115/1.4027684>, 2015.
- 620 Manolas, D. I., Karvelas, C. G., Kapogiannis, I. A., Riziotis, V. A., Spiliopoulos, K. V., and Voutsinas, S. G.: A comprehensive method for the structural design and verification of the INNWIND 10MW tri-spar floater, *J. Phys. Conf. Ser.*, 1104, <https://doi.org/10.1088/1742-6596/1104/1/012025>, 2018.
- Manolas, D. I., Riziotis, V. A., Papadakis, G. P., and Voutsinas, S. G.: Hydro-servo-aero-elastic analysis of floating offshore wind turbines, *Fluids*, 5, <https://doi.org/10.3390/fluids5040200>, 2020.
- 625 Menon, S.: *Piping Calculations Manual*, McGraw-Hill Education, 2004.
- Munters, W. and Meyers, J.: Towards practical dynamic induction control of wind farms: analysis of optimally controlled wind-farm boundary layers and sinusoidal induction control of first-row turbines, *Wind Energy Science*, 3, 409–425, <https://doi.org/10.5194/wes-3-409-2018>, 2018.
- 630 Nanos, E., Robke, J., Heckmeier, F., Cerny, M., Jones, K., Iungo, V., and Bottasso, C.: Wake characterization of a multipurpose scaled wind turbine model, *AIAA Scitech 2019 Forum*, <https://doi.org/10.2514/6.2019-2082>, 2019.
- Nanos, E., Letizia, S., Barreiro, D., Wang, C., Rotea, M., Iungo, V., and Bottasso, C.: Vertical wake deflection for offshore floating wind turbines by differential ballast control, *Journal of Physics: Conference Series*, 23, 513–519, <https://doi.org/10.1007/s003480050142>, 2020.
- Nanos, E., Bottasso, C. L., Letizia, S., and Iungo, V. G.: Design, steady performance and wake characterization of a scaled wind turbine with pitch, torque and yaw actuation, *Wind Energ. Sci. Discuss.*, <https://doi.org/10.5194/wes-2020-66>, 2021.
- 635 Nanos, E. M., Kheirallah, N., Campagnolo, F., and Bottasso, C. L.: Design of a multipurpose scaled wind turbine model, *Journal of Physics: Conference Series*, 1037, 052 016, <https://doi.org/10.1088/1742-6596/1037/5/052016>, 2018.

- Newman, J.: *Marine Hydrodynamics*, 40th anniversary edition, [MIT Press], 2018.
- 640 Parkin, P., Holm, R., and Medici, D.: The application of PIV to the wake of a wind turbine in yaw, in: *DLR-Mitteilung*, no. 3 in *DLR-Mitteilung*, pp. 155–162, qC 20101018, 2001.
- Patel, M.: *Dynamics of Offshore structures*, Butterworth-Heinemann, [S.l.], 1989.
- Roddier, D., Cermelli, C., and Weinstein, A.: *Windfloat: A Floating Foundation for Offshore Wind Turbines Part I: Design Basis and Qualification Process*, Proc. of the ASME 2009 28th Int. Conf. on Ocean Honolulu, 1997.
- 645 Scott, R., Bossuyt, J., and Cal, R.: Characterizing tilt effects on wind plants, *Journal of Renewable and Sustainable Energy*, 12, 2135—2143, <https://doi.org/10.1063/5.0009853>, 2020.
- Srinivas, G., Trolborg, N., and Gaunaa, M.: Application of engineering models to predict wake deflection due to a tilted wind turbine, *European Wind Energy Conference and Exhibition*, 2012.
- Steinbuch, M., de Boer, W., Bosgra, O., Peters, S., and Ploeg, J.: Optimal control of wind power plants, *Journal of Wind Engineering and Industrial Aerodynamics*, 27, 237–246, [https://doi.org/10.1016/0167-6105\(88\)90039-6](https://doi.org/10.1016/0167-6105(88)90039-6), 1988.
- 650 Su, K. and Bliss, D.: A numerical study of tilt- based wake steering using a hybridfree-wake method, *Wind Energy*, 23, 258–273, <https://doi.org/10.1002/we.2426>, 2019.
- van der Hoek, D., Kanev, S., Allin, J., Bieniek, D., and Mittelmeier, N.: Effects of axial induction control on wind farm energy production - A field test, *Renewable Energy*, 140, 994 – 1003, <https://doi.org/https://doi.org/10.1016/j.renene.2019.03.117>, 2019.
- 655 Vermeer, L. J., Sørensen, J. N., and Crespo, A.: Wind turbine wake aerodynamics, *Progress in Aerospace Sciences*, 39, 467–510, [https://doi.org/10.1016/S0376-0421\(03\)00078-2](https://doi.org/10.1016/S0376-0421(03)00078-2), 2003.
- Wang, C., Campagnolo, F., Sharma, A., and Bottasso, C.: Effects of dynamic induction control on power and loads, by LES-ALM simulations and wind tunnel experiments, *IOP Journal of Physics: Conference Series*, 1619, 022 036, <https://doi.org/doi:10.1088/1742-6596/1618/2/022036>, 2020.
- 660 Wang, C., Campagnolo, F., Canet, H., Barreiro, D. J., and Bottasso, C. L.: How realistic are the wakes of scaled wind turbine models?, *Wind Energy Science*, 6, 961–981, <https://doi.org/10.5194/wes-6-961-2021>, 2021.
- Wang, J., Wang, C., Campagnolo, F., and L., B. C.: Wake behavior and control: comparison of LES simulations and wind tunnel measurements, *Wind Energy Sci.*, 4, 71–88, 2019.
- Wang, K., Riziotis, V. A., and Voutsinas, S. G.: Aeroelastic Stability of Idling Wind Turbines, *Wind Energ. Sci.*, 2, 415–437, <https://doi.org/10.5194/wes-2-415-2017>, 2017.