

FarmConnors Market Showcases Results: Wind farm flow control considering electricity prices ~~and revenue~~

Konstanze Kölle¹, Tuhfe Göçmen², Irene Eguinoa³, Leonardo Andrés Alcayaga Román², Maria Aparicio-Sanchez³, Ju Feng², Johan Meyers⁴, Vasilis Pettas⁵, and Ishaan Sood⁴

¹SINTEF Energy Research, Trondheim, Norway

²DTU Wind and Energy Systems, Technical University of Denmark, Roskilde/Lyngby, Denmark

³Wind Energy Department, Centro Nacional de Energías Renovables (CENER), Sarriguren, Spain

⁴Mechanical Engineering, KU Leuven, Leuven, Belgium

⁵Stuttgart Wind Energy, University of Stuttgart, Stuttgart, Germany

Correspondence: Konstanze Kölle (konstanze.koelle@sintef.no)

Abstract. The EU and UK have made ambitious commitments ~~to decarbonise their economies by 2050~~ under the Net Zero plans ~~to decarbonise their economies by 2050~~. For this, offshore wind will play a major role, significantly contributing to a paradigm shift in the power generation and greater volatility of electricity prices. The operating strategy of wind farms should therefore move from a power maximisation to ~~revenue maximisation design~~ profit maximisation which includes income from
5 providing power system services and the reduction of maintenance costs. Wind farm flow control (WFFC) is a key enabler for this shift through mitigation of wake effects in the design and operation phases. The results of the FarmConnors market showcases presented here are the first attempt to economically assess WFFC strategies with respect to electricity market prices ~~and revenue~~. Here, we present a conceptual simulation study starting from individual turbine control, and extend it to layouts with 10 and 32 turbines operated with WFFC based on the results of five participants. Each participant belonged to a
10 different research group with their respective simulation environments, flow models and WFFC strategies. Via a comparative analysis of relative WFFC benefits estimated per participant, the implications of wind farm size, the applied control strategy and the overall model fidelity are discussed in zero-subsidy scenarios. For all the participants, it is seen that the income gain can differ significantly from the power gain depending on the electricity price under the same inflow, and a favourable control strategy for dominant wind directions can pay off even for low electricity prices. However, a strong correlation between income
15 and power gain is also observed for the analysed high electricity prices scenarios underlining the need for additional modelling capabilities to carry out a more comprehensive ~~revenue~~/value optimisation including lower prices and system requirements driven cases.

1 Introduction

The ambitious targets 'Net Zero by 2050' within the EU and UK will be driven, in large part, by a significant rise in offshore
20 wind. The UK alone has committed to 40 GW of offshore wind by 2030, a near four fold increase on its current capacity. The rapid rise in offshore wind will result in a shift from electricity prices driven by fossil fuel prices to those driven by the

availability of the renewable energy sources. This is expected to increase price volatility, which will challenge wind farm owners/operators to reconsider their design and operation strategy from power maximisation to revenue maximisation, particularly in zero-subsidy schemes.

25 Tools to support wind farm owner/operators to cope with this transition have been in development for a number of years within the field of wind farm flow control (WFFC). WFFC is the coordinated operation of wind turbines within a wind farm to serve a common goal by taking their aerodynamic interactions into account. This may include a diverse array of objectives from increased energy production and structural load alleviation to environmental and/or societal impact mitigation (Meyers et al., 2022). The most important benefit of the technology, as assessed by experts in a recent survey (van Wingerden et al.,
30 2020), is the increased energy production. It is also the most studied objective with varying results as reported in extensive literature reviews (see e.g., Kheirabadi and Nagamune, 2019; Andersson et al., 2021; Houck, 2022) and seen in the FarmConnors benchmark for WFFC code comparison (Göçmen et al., 2022). However, the translation of potential increase in energy production via WFFC to the economic benefits are yet to be quantified. The FarmConnors market showcases are designed to address that gap (Kölle et al., 2020; Eguinoa et al., 2021).

35 1.1 FarmConnors market showcases

First of its kind, the FarmConnors market showcases allow researchers to demonstrate the economic benefits of their control approaches in simulations using realistic environmental and market conditions based on 2020 and 2030 variable electricity price scenarios. Accordingly, the objectives of the showcases can be summarised as:

- Investigate ~~advantages~~benefits of WFFC for variable electricity prices.
- 40 – Demonstrate the value of WFFC in existing and upcoming market scenarios.
- Investigate the readiness of wind farm flow control for participation in electricity markets.

~~Investigating the advantages-~~

Investigating the benefits when participating in the wholesale electricity markets will provide insight into how WFFC can contribute to the revenue when the power is sold for variable prices. Demonstrating the value in existing and upcoming market
45 scenarios will help to understand the benefit of WFFC in a future with a higher share of wind energy in the energy mix.
Investigating the readiness of WFFC strategies will provide a better understanding of the state of the art and reveal the gaps towards market-driven wind farm operation.

The showcases are based on the TotalControl Reference Wind Power Plant (TC-RWP) with 32 DTU-10 MW wind turbines in a staggered layout (TotalControl, 2018), hypothetically located at the west coast of Denmark, 20 km west of the Horns Rev I
50 offshore wind farm. In addition, a simplified subset of the TC-RWP with 10 wind turbines is provided to facilitate participation using computationally intensive codes. However, the showcases data can be used as input to a farm with any number of wind turbines because wind speed and direction are given at one point in the wind farm. Independent of the layout, the wind farm receives the simulated electricity price signal for DK1 in NordPool because of the assumed location off the west coast of Denmark. The day-ahead electricity prices for both 2020 and 2030 scenarios are simulated using the balancing tool chain

55 presented in Kanellas et al. (2020), assuming different energy investments over time. The energy scenarios for 2020 and 2030 are qualitative considering relevant factors such as higher prices for fossil fuels in 2030. However, being academic examples, the time series for 2020 does not coincide with the real day-ahead prices for 2020 for DK1 in NordPool. For both of 2020 and 2030 day-ahead electricity prices, weather data by means of wind speed and direction is simulated at the central point of the TC-RWP for the meteorological year of 2012. Matching the meteorological data from 2012 at the central point of the TC-RWP.
60 , both price time series (2020 and 2030) are adjusted to the price level of 2012.

The wind turbines and their aerodynamic effects (wakes) are neglected in the simulations, so the wind inflow can be considered as the free stream one. More information about the data generation for the FarmConnors Market Showcases, including detailed descriptions of the tool chain and assumptions, is available in Kölle et al. (2020); Eguinoa et al. (2021).

1.2 Included showcases and participation

65 Originally, three ~~showcase sets have been specified~~ showcases sets were defined to reflect different market and operational situations within 2020 and 2030 scenarios; namely 1) high day-ahead electricity prices, 2) low day-ahead electricity prices, and 3) operation by the transmission system operator, where the last two include structural load alleviation as a performance indicator (~~Eguinoa et al., 2021~~)(Kölle et al., 2020).

The first set with high electricity prices motivates to maximise the power output, and thus, resembling the current situation.
70 The second set with low electricity prices was defined to provide incentives to not only focus on power production but include additional control objectives, in this case structural load alleviation. The third set with the objective of power tracking is an outlook to a wind farms operation that provides power system services and alleviates structural loads.

The three original showcases enable to compare different operational strategies with control objectives beyond power maximisation. Researchers worldwide were invited to participate by simulating their code using one or more showcases sets.

75 1.2 Included showcases and participation

Five participants have submitted their results for ~~the this~~ FarmConnors market showcases study. These participants are members in different research groups, and thus, used different simulation environments, different models for the wind farm flow and different control strategies. Due to the limited number of participating models capable of providing the relevant outputs for the alleviation of structural loads, the results presented here are mostly limited to the potential benefits of WFFC during the first
80 showcase set, i.e. high day-ahead electricity prices. For that showcase set, the highest 25% of the electricity prices (both in 2020 and 2030 scenarios) and its respective binned wind inflow data is used (Eguinoa et al., 2021). The resulting distribution of the prices with respect to the wind speed and direction bins are presented in Figure 1, and further analysed in Sect. 4.1.

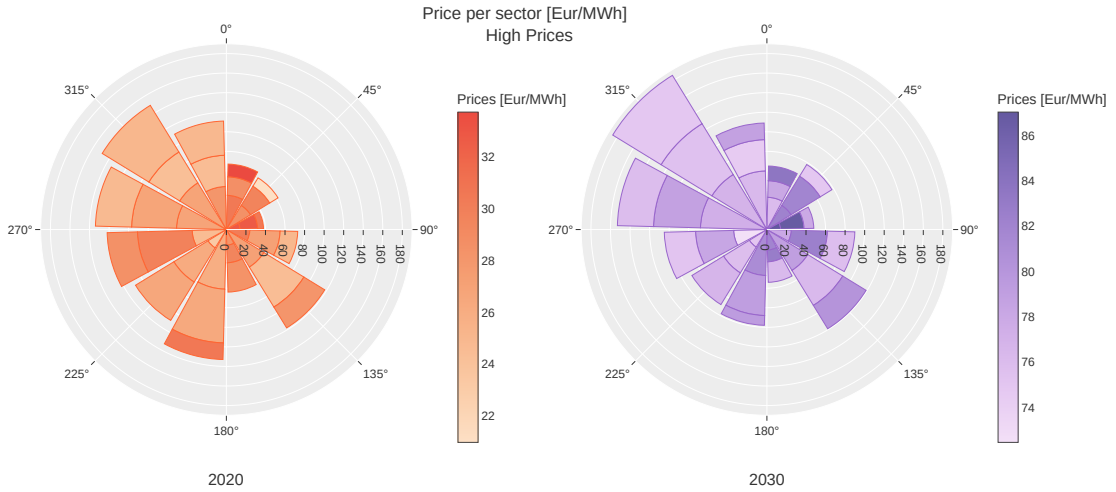


Figure 1. Distribution of day-ahead electricity prices per binned wind sector in 2020 (left) and 2030 (right) for the high-prices scenarios included in the present analysis. Sectors represent the wind direction bins ($\pm 15^\circ$). Each sector includes 7 m/s, 9 m/s and 11 m/s (± 1 m/s) wind speed bins in stacked form following that sequential order from the origin. Radial length of the polar plots indicates the number of samples per bin. The colour scale represents the prices per bin for both 2020 (left) and 2030 (right) scenarios.

Nevertheless, all three showcase sets are demonstrated for a single turbine with much lower computational cost for aeroelastic analyses, and the extension of the prospects for full-scale WFFC is discussed. Additionally, the differences of the expected benefits between smaller and larger wind farms are highlighted through the analyses of the subset and full layout of TC-RWP, i.e. 10 and 32 turbines. The considered setups for all participants are summarised in Table 1.

Wind farm layout	P1	P2	P3	P4	P5
Single wind turbine	x				
Subset of TC-RWP		x			
TC-RWP			x	x	x

Table 1. Overview of the participants (Participant IDs P1 – P5) per considered layout. The layout of the subset and full TotalControl Reference Wind Power Plant (TC-RWP) with 10 and 32 wind turbines, respectively, is indicated when the results are presented in Sect. 4.

1.3 Structure

The structure of the article is as follows. Sect. 2 discusses the methodology and results applied by P1, demonstrating the potential of including revenue based objectives for single turbine control in variable electricity prices of 2020 and 2030 market scenarios. The investigation is then focused on the high price scenario exclusively and extended to farm flow control. Accordingly, Sect. 3 presents the models and methodologies used by the rest of the participants to set up their WFFC simulations for

the showcases. A qualitative comparison of the results from these simulations and their corresponding discussion are included in Sect. 4. Finally, conclusions are drawn in Sect. 5.

2 Conceptual analysis for a single turbine – Participant P1

95 The analysis of a single wind turbine, presented in this section, was performed by participant P1. Control objectives of both optimised revenue and reduced structural loads were analysed. It therefore provides deeper insight into the revenue-based control paradigm. [An overview of this approach has been presented earlier \(Pettas and Cheng, 2021\).](#)

The new method proposed here by P1 is to include the electricity price in the decision-making of the turbine’s operational mode. Using down-regulation, power-boosting, and individual blade control (IBC) flexibly according to the instantaneous weather and price conditions, the damage and revenue accumulation of the turbine over time can be managed. Currently, 100 down-regulation (also referred to as curtailment or derating) is used commercially to follow reference power levels according to the grid system requirements. As previous numerical (Petras et al., 2018) and in-situ studies (Kretschmer et al., 2019) have shown, this process also reduces the structural loading. Moreover, turbine manufacturers already offer turbines with power-boosting capabilities to increase the energy production ([e.g., Power Boost by Siemens Gamesa \(Siemens Gamesa AS, 2020\)](#), [and Power Uprate by Vestas](#)) which comes with a penalty on structural loads. [Power boosting for the individual turbine is based on changing the control set-points in terms of blade pitch, generator torque and/or generator speed, effectively changing the nominal power output.](#) Individual pitch control, in various implementations, has also been extensively researched (e.g., Bossanyi, 2005; Gambier, 2021) and sparsely used in the industry. Combining these existing strategies flexibly and considering 105 the electricity prices and damage accumulation, the revenue and structural load objectives can be managed during the lifetime of the turbine. 110

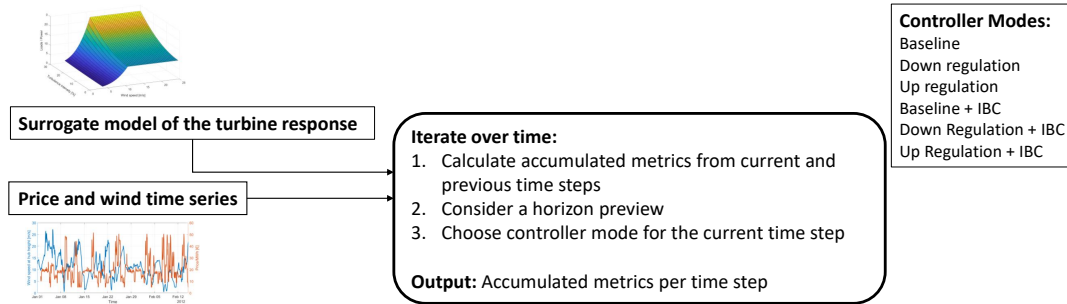


Figure 2. Proposed methodology for flexible control operation of a single wind turbine developed and applied by participant P1. IBC: Individual blade pitch control.

The procedure of implementing and evaluating a flexible control method at the wind turbine level is summarised in Figure 2. The baseline [DTU-10 MW reference](#) turbine controller is modified to ~~include~~ [achieve](#) the additional controller modes by adjusting the set-points and tuning the gains. The response of the turbine is derived from aeroelastic simulations and mapped to a surrogate model. This way, the response of the turbine can be quickly evaluated at each time step of the input data (price and

115 weather time series) ~~for a given control mode which can be chosen based on~~. According to the objectives, an optimisation logic decides the optimal controller settings taking into account loads and power levels for each horizon window.

For this study, the baseline proportional integral (PI) controller of the DTU-10 MW reference wind turbine is modified to allow varying nominal power ratings from 5 to 13 MW in down-regulation and power-boost modes. ~~The desired trajectories for these modes are then identified from the maps of~~ This is achieved by changing the set-points for power coefficient (C_p), tip
120 speed ratio $\tau(\lambda)$ and blade pitch ~~angle angles~~ (θ). The desired set-point trajectories for the operational modes are identified from $C_p - \lambda - \theta$ -maps, which are obtained by steady state open-loop simulations with varying wind and rotor speeds. The whole process is automated so that given a desired trajectory, the relevant design variables can be estimated, i.e., the torque constant, rated values, cut in, and rated wind speed. The tuning of the PI pitch controller could not be automated and was fine-tuned manually.

125 The approach chosen here was to keep the tip speed ratio constant for all power levels and vary the set-points by changing the fixed pitch angle below rated. As other studies have shown (Astrain Juangarcia et al., 2018; D.C. van der Hoek; and Kanev, 2017) there are trade-offs in each chosen trajectory when evaluated concerning load reduction. The IBC scheme is based on the direct feedback of the blade root flapwise bending moment, more details on this design are given in Pettas and Cheng (2018). For the power-boosting mode, the design choice is on whether this should be done with increasing rotor speed or generator
130 torque, or a combination of the two. To avoid inconsistencies at the transition around the rated region, it was decided to keep the tip speed ratio constant at the design level and increase both torque and rotor speed until the new rated value is reached. This contributed to accurate power tracking at the broadest possible range of wind speeds with smooth transition between the modes.

The output of the described procedure is a controller with a required rated value as input and the option to apply IBC.
135 The next step is to create a surrogate model of the response that can be used for evaluation and optimisation. As shown in the literature (see e.g., Dimitrov et al., 2018), different approaches can be followed with trade-offs in computational cost and accuracy. Here, a dense factorial sampling approach was chosen as the dimensions allow for this. In total, 21420 simulations were performed using the FAST v8 (Jonkman and Buhl, 2005) software to produce the output space. The input variable space includes variations of wind speed from 4 to 24 m/s with a step size of 1 m/s and turbulence intensity (TI) from 2 to 24% with
140 a step size of 2%. The vertical shear coefficient was kept constant at 0.2 to reduce the dimensions as it is less dominant on loads than the other two inputs (Dimitrov et al., 2018). ~~The duration of the simulation was 1 hour and for each case 3~~ One-hour simulations with three turbulence realisations were ~~considered performed for each case~~ while yaw misalignment ~~cases were neglected~~ was neglected. The total simulation time of each realisation was 3700 s where the first 100 s were discarded to remove initial transients. This set of simulations was repeated for all power ratings between 5 and 13 MW with a step size
145 of 0.5 MW. The IBC cases were evaluated only at wind speeds from 10 m/s and higher. ~~In total, 21420 simulations were performed using the FAST v8 (Jonkman and Buhl, 2005) software to produce the output space~~.

The mean of the results of the 3 turbulence seeds for each operating point was then tabulated in a 3D matrix for each quantity of interest (e.g., mean of power, DEL of blade root moment, etc.), forming the basis of the surrogate used here. To ensure the smoothness of the model and avoid local fluctuations due to controller tuning or seed-to-seed variability, filtering is applied

150 using a Gaussian convolution kernel. This structure was probed using a spline-based interpolation to produce the surrogate response of the system for any of the quantities of interest.

The evaluation part of the process was implemented similar to a time marching simulation, where at each time step the inputs are wind speed, TI, electricity price, and controller mode and the outputs are instantaneous and cumulative responses. The accumulation of quantities such as energy production was calculated by integrating the values over time. For quantities
155 such as the standard deviation of the rotor speed, the accumulation was done by averaging, and the cumulative load was calculated using equation 1 based on the 1 Hz damage equivalent loads (DEL). N denotes the amount of time steps considered, y is the load channel of interest, m is the Wöhler exponent where a value of 10 is used for the blade related loads and a value of 4 for the rest, and p is the probability of each instantaneous DEL which for this case is equal to $1/N$.

$$\text{DEL}_{\text{cumulative}}(y) = \left[\sum_{i=1}^N [\text{DEL}_{1\text{Hz}}(y_i)]^m p(y_i) \right]^{1/m} \quad (1)$$

160 The baseline single turbine response was identified by using the entire 1-year time series of the FarmConnors market show-cases data set, with the baseline rating of 10 MW without IBC. The optimisation objective is then to reduce the loads and/or increase the revenue over the whole period of each data set (2020 and 2030 time series). This problem is not trivial as there are multiple conflicting objectives in an online optimisation setup. Some of these include the high variation of the sensitivity of the different loads to the controller state and wind speed, the correlation of probability of wind speeds and prices, and the
165 uncertainty of future inputs. For this preliminary application of the method, the problem was simplified and treated as an offline single objective optimisation problem with a perfect preview. The blade root out-of-plane moment (BROop) was chosen as a representative load to be used to correlate power output level to loads for all conditions.

The method was applied for both data sets using the hourly resolution, i.e., the control strategy of the turbine is changing every hour according to the wind and price conditions for the time steps. In Figure 3, an example of operation with different
170 strategies controller modes applied over time is shown for the 2030 data. The controller modes in the y-axis of the upper left plot of Figure 3 correspond to 0 = shut down, 1 = IBC inactive, and 2 = IBC activated.

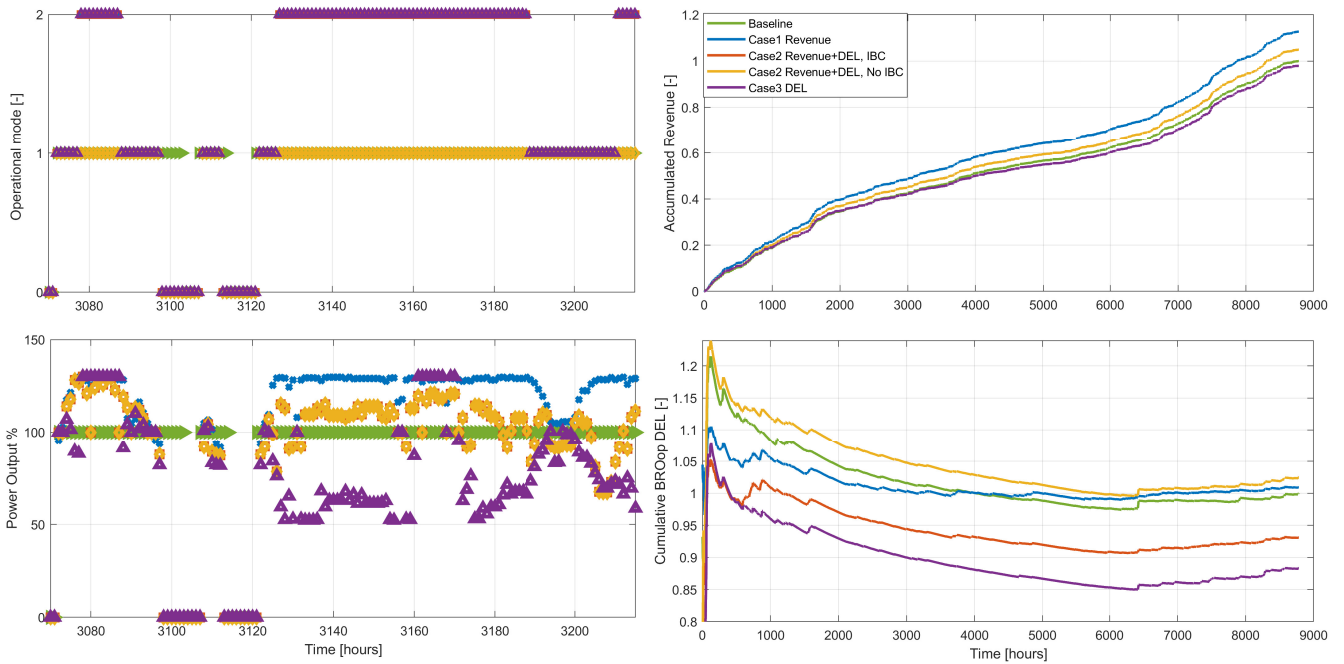


Figure 3. Example time series of instantaneous values for a subset of 2030 (left) and cumulative values for the whole one-year time series for 2030. **Left: Upper plot** – of 2030 (right). **Upper left:** Activation of individual blade pitch control (IBC) for controller modes and operational status (0 = turbine shut down, 1 = IBC inactive, and 2 = IBC activated) and **lower plot** – **Lower left:** Percentage of the instantaneous power output. **Right: Upper plot** – accumulated where 100% corresponds to the nominal power curve. **Upper right:** Accumulated revenue over time and **lower plot** – for different operational strategies. Normalised with the final accumulated value of the baseline where the turbine is operated constantly at 10 MW without IBC. **Lower right:** Cumulative damage equivalent load (DEL) of blade root out-of-plane moment (BROp) for the same cases, normalised with the final accumulated values cumulative value of the baseline where the turbine is operated constantly at 10 MW without IBC.

The sensitivity of the method for different objectives is examined with three cases. Case 1 aims to increase the revenue, case 2 to increase the revenue in a load-neutral manner, and case 3 to decrease the loads. In addition, case 2 was run with IBC and without IBC. In the lower right plot, each small change contributes more to the DEL according to the number of events (see Equation 1). As the accumulation continues the weight of each added DEL is smaller making the rate of change slower in time. Moreover, at the beginning of the calendar year (January), wind speeds are generally higher due to the winter season, the DELs are in general higher than in the following months leading to this temporary overshoot of the accumulated value. In Figure 4 the cumulative results of all methods for both datasets are shown. The trade-off between the two competing objectives is apparent. Case 1 has a higher impact on specific loads which shows that focusing on increasing revenue over some level comes with a high penalty in loads. Comparing case 2 with the IBC switched off and on, we can see the impact that IBC has on specific loads with the most dominant being, by design, the flapwise blade root moment (BRMy). In all cases considering the IBC loop, IBC was activated in power boosting mode and at wind speeds above 13 m/s with TI higher than 3%. The highest negative

185 impact on loads is found at the main shaft torque (LSSTq) and blade root torsion (BRMz), which are increased significantly with power-boosting and cannot be alleviated with down regulation or IBC. The gravity-driven loads of edgewise (BRMx) and in-plane blade root (BRIp) moments are not affected in any way. In both years, the achieved increase in revenue for case 2 was about 5% with neutral or decreased loads. The maximum revenue was 10% for 2020 and 13% for 2030 with a penalty of 15-20% at the loads influenced most by boosting.

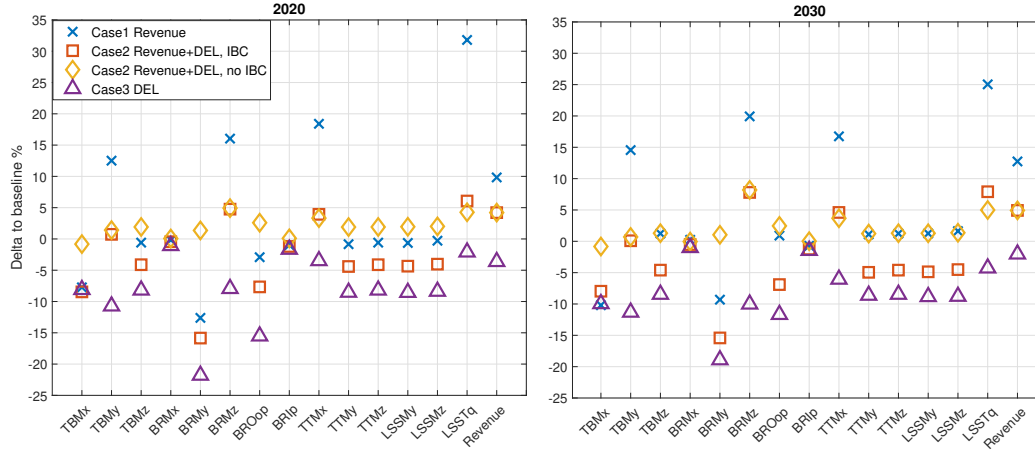


Figure 4. Cumulative values of damage equivalent loads (DELs) and revenue for operation of a single wind turbine with different objectives, in relation to the baseline operation. TBMx: tower bottom side to side moment, TBMy: tower bottom fore-aft moment, TBMz: tower bottom torsion, BRMx: blade root edgewise moment, BRMy: blade root flapwise moment, BRMz: blade root torsion, BROop: blade root out-of-plane moment, BRIp: blade root in-plane moment, TTMx: tower top roll moment, TTMy: tower top pitch moment, TTMz: tower top yaw moment, LSSMy: non-rotating low speed shaft bending moment about the Y axis LSSMz: non-rotating low speed shaft bending moment about the Z axis, LSSTq: low speed shaft torque.

190 The presented results are based on a basic optimisation logic including user-defined thresholds, and trial and error methods. Nevertheless, the results show that there is sensitivity of structural loads and revenue to the method used here, and in other tested cases, not shown here, different trade-off levels could be achieved. Moreover, a different behaviour was observed between the two years. Finding an effective tuning for the 2020 dataset was much harder to achieve than for the 2030 dataset. More threshold values had to be tested and fine adjustments could result in larger changes. On the other hand for 2030, even with rough estimations, the optimisation objectives were achieved without much tuning.

195 Since the weather time series are the same for both years, the difference lies in the price patterns. Figure 5 shows the contribution of each binned price and wind speed to the cumulative load and revenue for the two years considering baseline operation. In 2030 the higher variability of prices produces more discrete and uncoupled regions of influence for each objective. This allows to define thresholds optimising the two competing objectives with fewer trade-offs and less detailed knowledge of the probabilities. This example shows that the boundary condition of the markets in which the wind farms operate, influences significantly how much flexible control (or any other turbine or farm control strategy) can influence the structural loading and

200 revenue of the system. The main impact does not come from the mean level of the prices but their variability over time. For the near-future energy systems with increasing renewable penetration, this behaviour can be expected and the approach shown here can be effective to optimise the operational strategy.

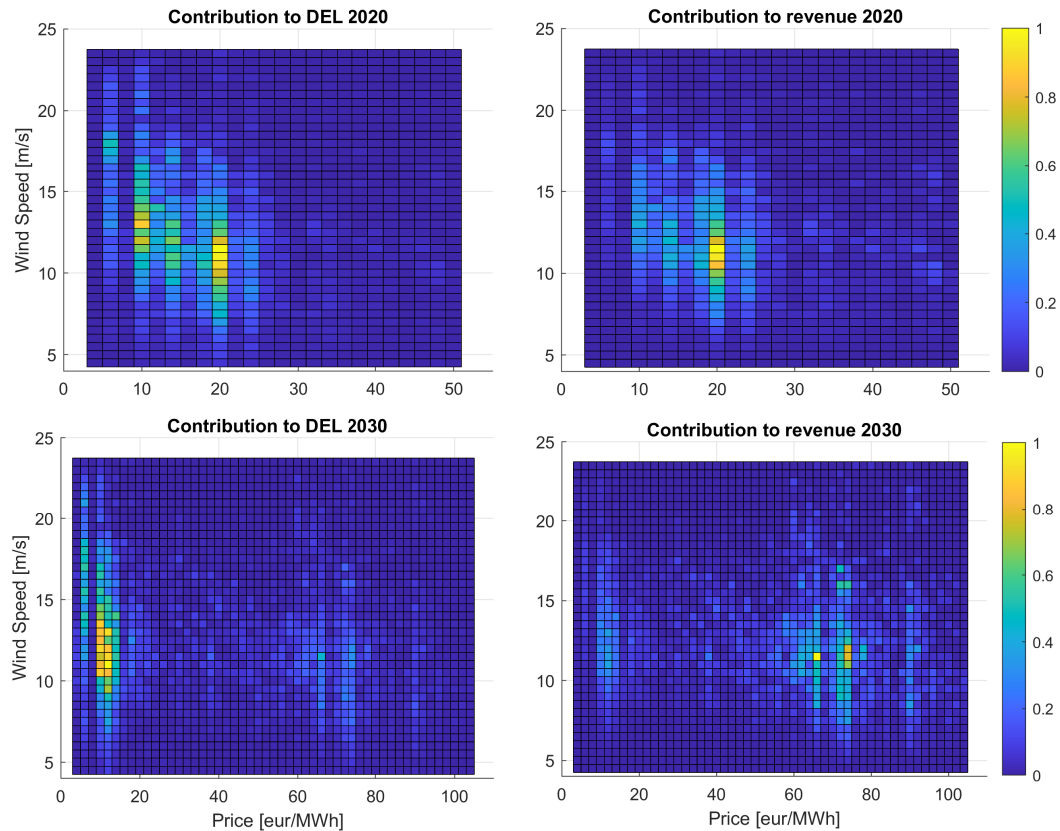


Figure 5. Contribution of price and wind speed bins to revenue and damage equivalent load (DEL) of blade root out-of-plane moment (BROop), obtained by multiplying the counts of each bin with the response obtained with the baseline wind turbine controller in simulations with the full datasets for 2020 and 2030. All values are normalised to the maximum value for the specific year and metric. Note that regions with high contributions to revenue on the right are strongly correlated to the bins with (below rated) wind speed and direction in Figure 1 included in the showcase with high day-ahead electricity prices.

The results ~~here are based on the~~ presented here for a single turbine are an initial application of the proposed method ~~which will be that was first published by Pettas and Cheng (2021).~~ Further analysis will be performed to identify the true potential and the underlying connection of the trade-offs between structural loads and revenue and the results will be discussed in detail in a separate publication.

The next step would be to add the dimensions of wind direction and wind farm (flow) control to evaluate the holistic potential of flexible control in wind energy in the future electricity markets. On that regard, the rest of the paper focuses on the most

beneficial price and wind speed bins for wind farm flow control as identified in Figure 5 with corresponding wind directions presented in Figure 1.

3 Participants methodology for WFFC – Participants P2-P5

The analysis of the single turbine control for increased revenue by P1 is extended in this section to wind farm level to explore the potential power and income gains of different WFFC oriented models with varying control strategies, both for the 10-turbine layout (participant P2) and the full TC-RWP with 32 turbines (participants P3 – P5). Table 2 provides a summary of the flow models used by the participants. More detailed descriptions of the models and the simulation setups are provided below for each participant.

	P2	P3	P4	P5
Wind farm model	FLORIS (v2) ^a	PyWake ^b	FLORIS (v2) ^a	–
Control strategy	Wake steering	Combined [*]	Wake steering	Combined [*]
Velocity deficit model	Gauss-legacy ^c	Fuga (linearised CFD)	Gauss-legacy ^c	Gauss-legacy ^c
Added turbulence model	Crespo-Hernández ^d	–	Crespo-Hernández ^d	Crespo-Hernández ^d
Wake superposition	SOSFS ^e	Linear ^f	SOSFS ^e	Recursive ^g

Table 2. Overview of participating models. ^a(NREL, 2021); ^b(Pedersen et al., 2019); ^c(Bastankhah and Porté-Agel, 2014), [the term Gauss-legacy is used in FLORIS Version 2 as opposed to the Gaussian formulation implementing the near wake model by \(Blondel and Cathelain, 2020\), as described in \(Fleming et al., 2020\)](#); ^d(Crespo and Hernández, 1996); ^eSOSFS – Sum of Squares Freestream Superposition; ^f[PyWake superimposes deficits calculated for each individual turbine, with respect to the local free stream, which takes into account any wake deficit from upstream turbines\(Ott and Nielsen, 2014\)](#); ^g(Lanzilao and Meyers, 2021); ^{*} Combined control strategy corresponds to the combination of static wake steering and static axial induction.

3.1 Participant P2

3.1.1 Wind farm model

The wind farm model used by participant P2 is FLORIS (NREL, 2021), where the following sub-models have been applied:

- Velocity deficit: Legacy Gauss (Gaussian model), by Bastankhah and Porté-Agel (2014).
- Wake added turbulence: Crespo-Hernández model (Crespo and Hernández, 1996).
- Wake superposition: modelled with SOSFS – Sum of Squares Freestream Superposition, to combine the wake velocity deficits to the base flow field (Katic et al., 1986).
- Wake steering: Wake deflection model by Bastankhah and Porté-Agel (2016).

225 Additionally, power loss due to yaw misalignment in the controlled upstream turbine is modelled by scaling the effective wind speed as suggested by Bossanyi (2019) in equation 2, where v_{avg} is the rotor-averaged wind speed, Ψ is the steering control setting and n is the yaw loss exponent. Related power is then obtained based on this scaled wind speed and the power curve.

$$v'_{avg} = v_{avg} \cos(\Psi)^{n/3} \quad (2)$$

230 The values for the corresponding model parameters utilised in the sub-models listed above can be found in Table 3. The wake velocity and turbulence model parameters have been obtained from previous calibration studies on other offshore wind farms. For $TI_{initial}$, the value of ambient TI has been used. The yaw loss exponent value n is selected within the range of values already reported in the literature —see examples in Simley et al. (2021)—. Shear is considered equal to zero.

	α	β	k_a	k_b	$TI_{constant}$	TI_{ai}	$TI_{downstream}$	n
P2	3.0	3.0	0.3503	0.005312	0.1251	9.932e-5	-0.4689	1.61
P4	0.58	0.077	0.38	0.004	0.5	0.8	-0.32	1.88

Table 3. Model parameters for FLORIS used by P2 and P4. P2 used a set of in-house calibrated parameters, P4 the default values. ~~For a~~ Parameters description (NREL, 2021): α and β are parameters determining the dependence of the downstream boundary between the near wake and the far wake region on the turbulence intensity and the turbine’s induction factor, respectively; k_a and k_b are parameters used to determine the linear relationship between the turbulence intensity and the width of the Gaussian wake shape; $TI_{constant}$ is a constant scaling the wake-added turbulence intensity; TI_{ai} is the axial induction factor exponent used in the calculation of wake-added turbulence; $TI_{downstream}$ is the exponent applied to the distance downstream of an upstream turbine normalised by the rotor diameter, ~~consult~~ used in the ~~documentation~~ calculation of FLORIS (NREL, 2021) wake-added turbulence; n is the power–yaw loss exponent.

3.1.2 Wind farm and wind turbine control strategies

235 The wind farm optimisation has been executed using the algorithms available in the FLORIS library, using Sequential Least Squares Programming (SLSQP). The control strategy at the wind farm level was aimed at maximising the total energy production of the wind farm per bin through yaw steering. The wind rose has been divided into 144 sectors (2.5° steps) and 2 m/s intervals for wind speed. Optimal set-points were obtained individually for each combination of wind speed and direction.

240 Yaw misalignment for wake steering is limited within the range $[0^\circ, 20^\circ]$, where the sign convention is positive yaw misalignment for counter-clockwise rotation viewed from above. The range is in accordance with results in the literature (Simley et al., 2021).

3.2 Participant P3

3.2.1 Wind farm model

Participant P3 used PyWake (Pedersen et al., 2019) to model the TC-RWP. PyWake can model a wind farm in two ways, considering only downstream wake propagation as well as an iterative method that is able to consider wind turbine blockage effects. Either approach counts with several wake, blockage and deflection models in its library. The configuration used by P3 is the following (see Table 1):

- Velocity deficit model: Fuga (Ott and Nielsen, 2014). Linearised CFD model developed by DTU. It models wake deficit and wake propagation assuming uniform and fixed turbulence intensity (TI) over the wind farm. In this case a fixed, conservative TI = 5% was assumed.
- Wake superposition: Linear superposition, which is one of the basic assumptions in Fuga (Ott and Nielsen, 2014).
- Added turbulence: Fuga assumes uniform turbulence represented by vertical shear and surface roughness height. No added turbulence is needed for estimation of wake expansion and deficit decrease over distance.
- Wake yaw deficit model: Fuga Yaw Deficit and Fuga Deflection models. Fuga Yaw Deficit models implicitly the deficit and deflection models, and calculates a sets of look-up tables with the (yaw) longitudinal deficits UT and UL , due to transverse and longitudinal unit forces, respectively. Fuga Deflection, like the Fuga Yaw Deficit, estimates tables for VT and VL , the transverse deficits generated by unit forces in the transverse and longitudinal directions. Since Fuga is a linear model, the final deflected deficit is calculated by linear superposition of UT , UL , VT and VL .

3.2.2 Wind farm and wind turbine control strategies

The control strategy was applied to wind turbine and wind farm levels.

The control strategy at the wind farm level aimed to maximise the total wind farm power production by individual control of wind turbine's derating and wake steering. The set-point of each turbine was determined using TOPFARM, the Python package developed by DTU for wind farm optimisation. The routine built a look-up table of set-points (derating and yaw angle per turbine) dividing the wind rose in 120 sectors of 3° and incremental steps of 1 m/s. Finally, the set-points for the wind direction and speed in the high prices scenarios for 2020 and 2030 were obtained by interpolating this table.

Wind turbine loads were not estimated by P3, but each individual turbine curve was constructed to operate at maximum power coefficient, C_p , at a given wind speed and yaw misalignment, while minimising the thrust coefficient, C_t , for loads alleviation. The power curves were constructed using HAWC2aero, subset of HAWC2, and also developed by DTU, to simulate the dynamics of a rigid turbine rotor under aerodynamic loads. This approach allows a more precise estimation of C_p and C_t under yawing conditions.

3.3 Participant P4

3.3.1 Wind farm model

Participant P4 used FLORIS (NREL, 2021) to model the wind farm flow and power production. The default setting of FLORIS was used, which means the following sub-models were activated:

- 275 – Velocity deficit model: Legacy Gauss (Gaussian model) by Bastankhah and Porté-Agel (2014).
- Wake added turbulence model: Crespo-Hernández model (Crespo and Hernández, 1996).
- Wake superposition: modelled with SOSFS – Sum of Squares Freestream Superposition, to combine the wake velocity deficits to the base flow field (Katic et al., 1986).
- Wake steering: Wake deflection model by Bastankhah and Porté-Agel (2016).

280 Default parameters of the FLORIS sub-models were used in P4 simulation, which are also listed in Table 3. [The default yaw loss exponent in FLORIS, \$n = 1.88\$, was determined based on high fidelity computational fluid dynamics \(CFD\) simulations by \(Gebraad et al., 2016\).](#) Note that for simulating yawed and non-yawed wind farm production for each inflow bin, the wind shear exponent was derived with a power law based on the mean wind speed at two heights: 50 m and 150 m, while the mean turbulence intensity measured at hub height was used.

285 3.3.2 Wind farm and wind turbine control strategies

Wake steering was chosen by P4 as the control strategy. Considering the range of wind directions per inflow bin and that different wind directions have different potential for wake steering, P4 took an averaging approach when simulating the wind farm flow and power production, both for the non-yawed case (Normal operation) and the yawed case (with WFFC).

For a given inflow bin, 31 flow cases were considered, each representing a flow case with a wind direction in the range of
290 $[-15^\circ, 15^\circ]$ around the wind direction bin centre, θ_{cen} , and a wind speed as the mean wind speed, u_{mean} , at hub height.

For each of the 31 flow cases, the optimal yaw angle of all turbines was found using the SLSQP (Sequential Least Squares Programming) algorithm included in FLORIS, with the maximal iterations set to 200. The objective of this optimisation problem is to maximise the total power output of the wind farm:

$$\gamma_1^*, \gamma_2^*, \dots, \gamma_{N_t}^* = \underset{\gamma_1, \gamma_2, \dots, \gamma_{N_t}}{\operatorname{argmax}} P_{tot}(\gamma_1, \gamma_2, \dots, \gamma_{N_t} | u_{mean}, \theta) \quad (3)$$

295 where γ_i^* represents the optimal yaw angle of the i th turbine, $\theta \in [\theta_{cen} - 15, \theta_{cen} - 14, \dots, \theta_{cen}, \dots, \theta_{cen} + 14, \theta_{cen} + 15]$ is the wind direction for this flow case, and the lower and upper bounds of yaw angle for all turbines are set to -25° and 25° .

Thus, for each inflow bin, there are 31 sets of optimal yaw angles, each with a different total power output P_{tot} . The final reported power output P_{WFFC} for this inflow bin was the mean of these 31 cases. Similarly, when calculating the normal power output P_{Normal} , the mean of the 31 flow cases was also used.

300 By considering 31 flow cases with different wind directions and solving the yaw optimisation problem separately for each inflow bin, P4 took an idealised or 'greedy' approach that tends to explore the full potential of wake steering, since the effectiveness of wake steering can be quite sensitive to the wind direction. However, in real-life implementation, limits on the speed and accuracy of the yawing system, uncertainty of the measured inflow wind direction, and other factors can make the reported energy gain hard to be fully realised.

305 3.4 Participant P5

3.4.1 Wind farm model

Participant P5 used an in-house analytical wake model which combines a Gaussian wake model with a recursive wake merging methodology (Lanzilao and Meyers, 2021). The model has previously been used in a power optimisation study for the TotalControl wind farm using wake steering (Sood and Meyers, 2022). The following model specifications were used by P5

- 310
- Velocity deficit model: Legacy Gauss (Gaussian model), by Bastankhah and Porté-Agel (2014).
 - Wake added turbulence model: Crespo-Hernández model (Crespo and Hernández, 1996).
 - Wake superposition: Modelled using a recursive wake merging methodology (Lanzilao and Meyers, 2021).
 - Wake steering: Wake deflection model of Bastankhah and Porté-Agel (2016).

3.4.2 Wind farm and wind turbine control strategies

315 The control strategy applied by P5 was a combination of wake steering and axial induction control of individual wind turbines within the farm to achieve the optimisation objective. For power maximisation, this included finding the optimal yaw and thrust set-points of all the turbines within the farm to achieve maximum power production according to the equation

$$\begin{aligned}
 \min_{\gamma, C_T} \quad & -1 * \sum_{k=1}^{N_t} \frac{1}{2} \rho C_P(\gamma_k, C_{T_k}) A_k U_k^3(\gamma, C_T), \\
 \text{s.t.} \quad & -\frac{\pi}{6} < \gamma < \frac{\pi}{6}.
 \end{aligned} \tag{4}$$

where, C_P is the coefficient of power of each turbine, evaluated for a yaw angle γ_k according to the cosine power law (Doeke-meijer et al., 2020), i.e., $C_P(\gamma) = C_P \cos^3 \gamma$, multiplied by the scaling factor $\eta(\gamma) = \frac{1.08}{\cos \gamma}$. The effect of induction control by using a sub-optimal thrust coefficient C_T was determined by using a look-up table which was previously developed using [OpenFast](#). γ and C_T are vectors containing the yaw and thrust set-points for all the turbines across the farm. Turbine yaw angles are limited between $\pm 30^\circ$ to prevent excessive fatigue and the thrust coefficient is limited between 0 and 1 to avoid turbine shutdown or over-induction. A_k is the area of each turbine, and U_k is the inflow velocity of each turbine as a function of upstream yaw angles and thrust set-points, determined using the wake model. The optimisation problem is solved to obtain set-points for all the turbines within the wind farm using the SLSQP solver from the SciPy Python package, while utilizing the multi-start approach of basin-hopping to avoid local minima (Virtanen et al., 2020).

325

4 Results & Discussion

The FarmConnors market showcases define only the layout of the wind farm and as simulation input the wind speed and direction as well as electricity prices. Any other detail of the implementation is left to the participants. Possible reasons for different results include (1) different models for wind farm flow and power production or different parameters for the same model; (2) different control strategies; (3) different optimisation problem formulation and bounds/constraints on design variables; (4) different optimisation methods or different settings of the same algorithm. [The percentage wake losses summarised in Table 4 illustrate the differences between participant models.](#)

	<u>P2</u>	<u>P3</u>	<u>P4</u>	<u>P5</u>
<u>2020</u>	<u>9</u>	<u>14</u>	<u>18</u>	<u>12</u>
<u>2030</u>	<u>9</u>	<u>13</u>	<u>18</u>	<u>11</u>

Table 4. [Percentage wake loss for participants P2–P5 in high price scenario for 2020 and 2030, i.e. \$\(P_{\text{gross}} - P_{\text{Normal Operation}}\)/P_{\text{gross}}\$ where \$P_{\text{gross}}\$ is the theoretical gross production without wake losses and \$P_{\text{Normal Operation}}\$ the normal production without WFFC simulated by each participant.](#)

Therefore, the WFFC algorithms detailed in Sect. 3 are not directly compared against each other, but to a wind farm operation without WFFC (also referred to as normal operation) for the same model implementation. During the high price scenarios for both 2020 and 2030, it is expected that maximum power production will be favoured in the interest of generating the highest possible income. Accordingly, the relative metrics for power and income gain are presented in this section for analysis and discussion.

4.1 Analysis of weather and price conditions

Before presenting the specific results per participant, a comparative analysis between 2020 and 2030 is performed for the weather and price conditions to support the subsequent discussions. The price time series for 2020 and 2030 were simulated for the same meteorological year assuming different energy scenarios at the systems level (Eguinoa et al., 2021). Moreover, the investigated high-prices showcase includes only wind speeds between 6 and 12 m/s, where the strongest wake effects are typically observed and the highest benefit of WFFC can be expected. Thus, the included wind-speed bins are between cut-in and just above the rated wind speed for the DTU 10 MW reference wind turbine.

As shown in Figure 1, absolute price values are 2-3 times higher in 2030 than in 2020. If wind sectors are analysed, it can be seen that the occurrences in the North-West quadrant in 2030 increase with respect to 2020, at the expense of the South-West quadrant. Similarly, the highest prices within each year are distributed differently in 2020 and 2030. In 2020, the bins with the highest prices are [15°-centred sector, 11 m/s] and [75°-centred sector, 7 and 9 m/s], followed by [195°-centred sector, 11 m/s]. By contrast, in 2030 the bins with the highest prices are mostly concentrated at [75°-centred sector, 7 and 9 m/s], followed by [15°-centred sector, 11 m/s].

In conclusion, the prices distribution among wind direction and wind speed bins is not equal in both years despite being based on the same meteorological time series. This reflects how the specific combination of site wind conditions and market prices shall impact planned operation and profitability assessments for a particular wind farm as the market evolves during its lifetime.

4.2 Power gain

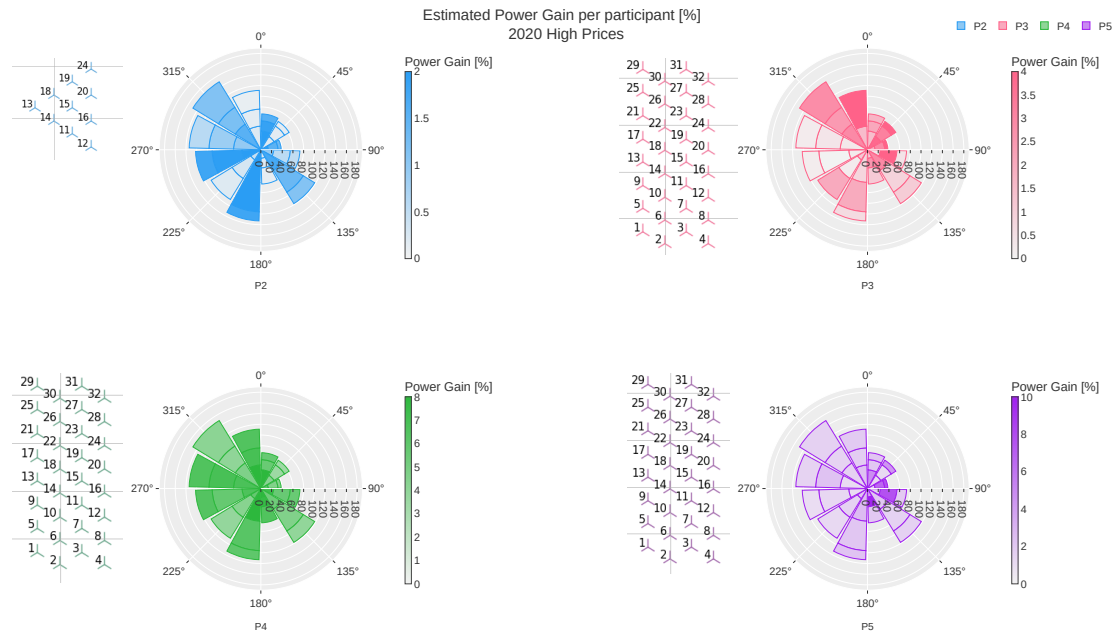


Figure 6. Power gain when using wind farm flow control (WFFC) in simulations with the wind inflow and price information for 2020 as shown in Figure 1. Each polar plot presents the results of one participant. The wind farm layout considered by this participant is shown on the left side of the polar plot.

The estimated increased production per bin is normalised with respect to the production under normal operation without WFFC. For each sector, the stacked gains are indicated as heat maps and reported per 7 m/s, 9 m/s and 11 m/s along the radial direction, with respect to the number of samples per bin.

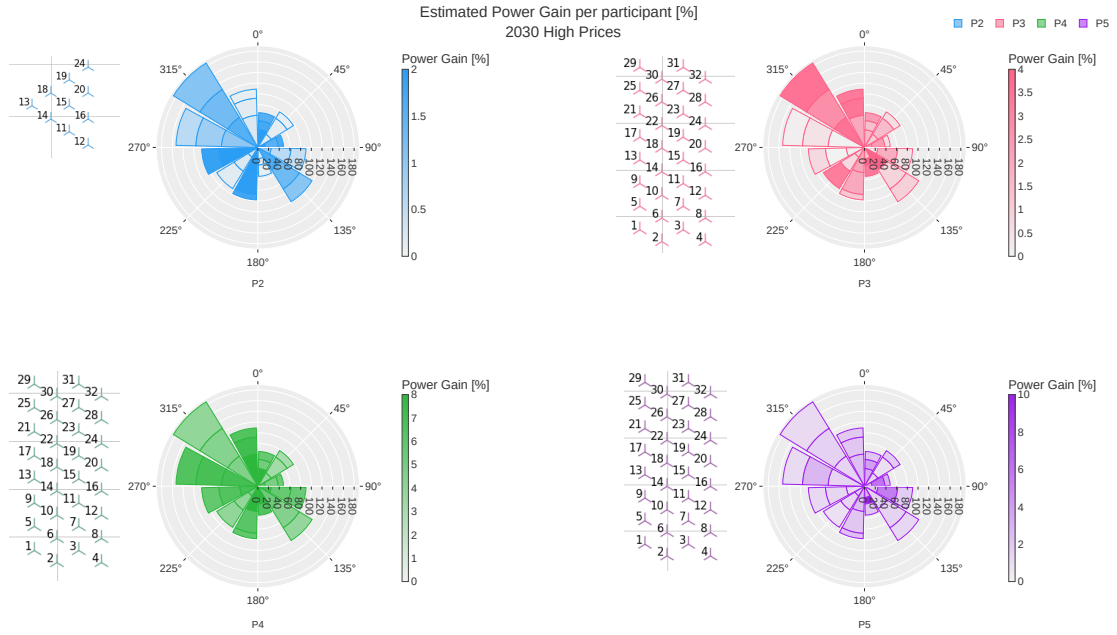


Figure 7. Power gain when using wind farm flow control (WFFC) in simulations with the wind inflow and price information for 2030 as shown in Figure 1. Each polar plot presents the results of one participant. The wind farm layout considered by this participant is shown on the left side of the polar plot.

The estimated increased production per bin is normalised with respect to the production under normal operation without WFFC. For each sector, the stacked gains are indicated as heat maps and reported per 7 m/s, 9 m/s and 11 m/s along the radial direction, with respect to the number of samples per bin.

Figures 6 and 7 show the normalised power gains per wind direction for 2020 and 2030, respectively. The results are presented in separate polar plots for each participant with the considered farm layout on the left. Each sector includes the wind speed 360 bins in stacked form in the order 7 m/s, 9 m/s and 11 m/s (± 1 m/s) from the origin. The radial extension of a bin represents its number of samples, which is fixed in the showcases set for all participants. The heat map indicates the normalised power gain per bin in percentages, as shown in equation 5.

$$\text{Power Gain}_{\text{bin}} = \left[\frac{P_{\text{WFFC}} - P_{\text{Normal Operation}}}{P_{\text{Normal Operation}}} \right]_{\text{bin}} \cdot 100 \quad (5)$$

where P_{WFFC} is the farm-wide power using WFFC and $P_{\text{Normal Operation}}$ the farm-wide power in normal operation, calculated as the sum of the power of all wind turbines. Thus, the normalisation accounts for the size of the wind farm but not the particular 365 layout. The total power $P_{\text{WFFC/Normal Operation}_{\text{bin}}}$ generated by the wind farm per bin is the sum of the power production of all samples in that bin.

The results from P2 for 2020 are shown in the upper left polar plot in Figure 6. The heat map represents the estimated power gain where darker shades correspond to higher gains. Accordingly, it shows that power gains of up to 2% are estimated by P2

370 for the considered 10-turbine layout. Sectors with high power gains alternate with others with lower gains (e.g., 15° shows high power gains being adjacent to the sectors 345° and 45° with low power gains). These high-gain sectors include the wind directions that are aligned with the longest rows of turbines, with higher expected wake losses. Participant P3 reports power gains of up to 4%. The sectors with northwest and easterly wind show higher power gains than the rest. In bins with western wind, very little to no power gain is reported. This division into favourable wind directions with several adjacent sectors having
375 very high or low power gains is most extreme among all participants, indicating high sensitivity to wind direction in the implemented control settings. The green polar plot shows the results from P4 with power gains of up to 8%. The power gains achieved by P4 reach similar values in all sectors having the most uniform distribution across all bins from all participants. Participant P5 reported the highest power gains, per bin, of up to 9%. A few bins with easterly wind have very high power gains although their adjacent bins have very low or no power gain. Adjacent wind speed bins with high and low power gains in the
380 same sector are observed exclusively in in P3 and P5 results -which both applied a combined control strategy. The difference in power gain for different wind speeds in the same sector is more significant for P5 (6% vs. 4% difference).

The discussed Figures 6 and 7 show consistent power gains per participant for both years between 2020 and 2030 for each participant. As discussed earlier, the inflow conditions for the simulated whole-year energy scenarios are identical. However, the differences are observed due to the definition of the high prices showcases as they correspond to slightly different periods
385 during 2020 and 2030, resulting in nonidentical wind distributions shown in Figure 1. The power gains from P2 for 2030 are very similar to those in 2020. The distribution of power gains between the wind speeds per sector is almost the same. An exception is the 75°-sector, where the 11 m/s-bin has the lowest power gain in 2020 but the highest in 2030. However, the power gain is still in a similar range. Comparing the red polar plots for P3 in Figures 6 and 7, the most significant difference is that the power gain for northeastern winds are lower while the power gain for bins with southern wind increases. Moreover, the
390 9 m/s-bins for western wind directions (255° and 285°) have higher power gains relative to the 7 and 11 m/s bins in the same sector. The power gain from P4 for the same bins in 2020 and 2030 is visually indistinguishable. The purple polar plots in Figures 6 and 7 show very similar colour patterns. However, there are less distinct differences in 2030 among the bins in the same sector with eastern directions. The maximum power gain attained slightly increases.

There are, however, differences between the participants. First, the maximum power gain ranges from 2% for P2 to 10% for
395 P5. Participant P5 reports also the largest range of power gains. The low levels of power gain estimated by P2 might simply be related to the smaller layout with overall lower wake losses. In the larger layout considered by the rest of the participants, higher wake losses are observed which are expected to result in potentially higher WFFC gains. The polar plots for P2 and P4 for both years show local maxima for wind directions from the north (with bin centres of 15° and 345°), the east (with bin centres of 75° and 105°), the south (with bin centres of 165° and 195°) and the west (with a bin centre of 255° and 285°).
400 These are sectors with high electricity prices or a high number of samples per bin (see Figure 1). While this applies for P4 with the full TC-RWP for two adjacent sectors, P2 with the subset of TC-RWP achieved this for one wind direction sector. The difference is more distinct for P2 than P4, where both P2 and P4 applied wake steering as WFFC strategy. This pattern of power gains across sectors does not appear for P3 and P5, which applied both wake steering and induction control to the TC-RWP layout. Having applied combined control strategies, their results show more variation between wind speed bins in

405 the same sector. Instead of single or two adjacent sectors, advantageous wind directions seem to cover a broader range of wind directions. An interesting observation is that P3 has the lowest and almost no power gain for western wind (sectors with 255° and 285° in Figure 6), while P4 has the highest power gains for the same sectors. ~~Although both~~ Both P3 and P4 simulated the full TC-RWP ~~the using~~ different control strategies ~~applied are seen and~~ flow models. The difference in control strategies is considered to be the main driver for ~~that disparate behaviour~~ the disparate behaviour even though the different flow models will also have an impact.

410 will also have an impact.

4.3 Energy gain

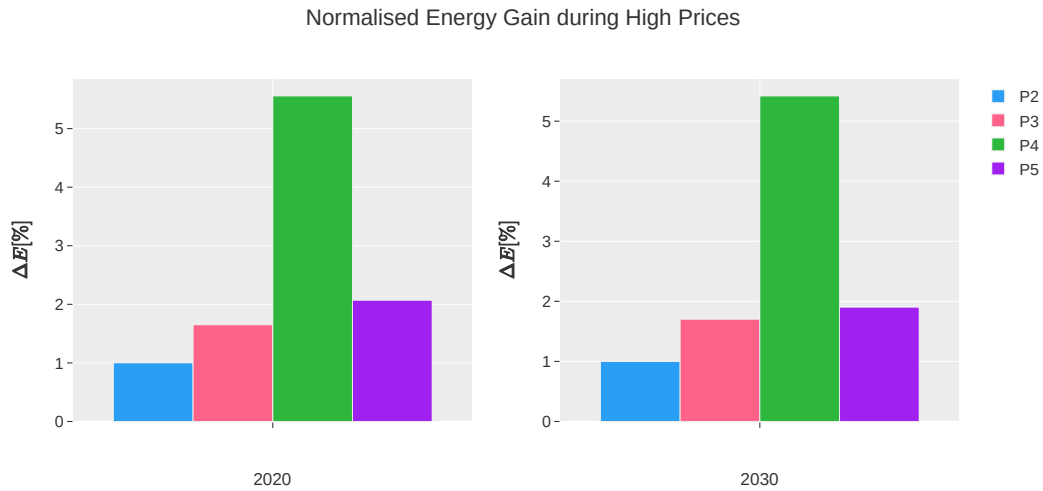


Figure 8. Energy gain (ΔE) in percentage when using wind farm flow control (WFFC) in simulations with the wind inflow and price information as shown in Figure 1 for 2020 (left) and 2030 (right), with respect to the production under normal operation without WFFC, calculated using Equation 6 for each participant, and where normalisation is performed per bin. Each bar indicates the results for one of the participants P2–P5.

Figure 8 summarises the energy gains during high prices for 2020 and 2030. Each bar represents the energy gain for one participant, as normalised sum over all bins:

$$\Delta E_{\text{total}}^{\text{norm}} = \sum_{\text{bin}} \left[\frac{E_{\text{WFFC}} - E_{\text{Normal Operation}}}{E_{\text{Normal Operation}}} \right]_{\text{bin}} \quad (6)$$

415 The generated energy $E_{\text{WFFC/Normal Operation}}$ [MWh] per bin is:

$$E_{\text{WFFC/Normal Operation}_{\text{bin}}} = n_{\text{bin}} \sum_{\text{WT}} P_{\text{WT}} \quad (7)$$

where n_{bin} [h] is the number of samples in that bin, and P_{WT} [MW] is the power produced at each wind turbine. In the showcases dataset, bins have a one-hour resolution, such that multiplying samples and power production in a bin gives the energy.

The results for 2020 and 2030 are consistent for each participant reaching similar percentages in both years. Participant P2 achieves in both years a normalised energy gain of 1%, P3 of 1.7%, and P4 of 5.5%. The energy gain reported by P5 in 2020 is 2%, which is slightly higher than that in 2030 with 1.7%. This makes 2030 is also about the same as that in 2020. However, P5 is the only participant with somewhat different energy gains in 2020 and 2030. Participant P5 was also the one with the largest variance of power gains across the bins, reaching up to 10%. The normalised energy gains from P2, P3 and P5 range from 1% to 2%. Participant P4 reaching a much higher energy gain of 5% was the one with the highest wake loss (see Table 4) and the most even power gains over all bins (see Figures 6 and 7). Furthermore, P3 and P5 have the same normalised energy gain in 2020 despite the large differences in power gains per sector.

All participants achieve a minimum of 1% energy gain. A recent expert elicitation revealed that wind farm operators and turbine manufacturers consider already an increase of the annual energy production of less than 1% as sufficient to justify the field implementation of WFFC (van Wingerden et al., 2020). This supports the general industrial potential of WFFC even without the consideration of the electricity prices.

4.4 Income gain

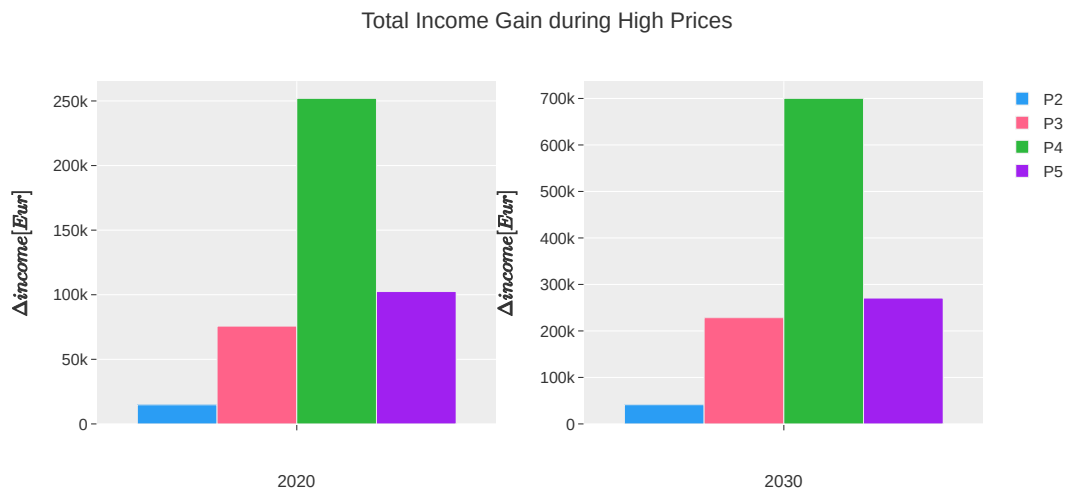


Figure 9. Total income gain ($\Delta income$) in EUR when using wind farm flow control (WFFC) in simulations with the wind inflow and price information as shown in Figure 1 for 2020 (left) and 2030 (right), compared to the production under normal operation without WFFC. Each bar indicates the results for one of the participants P2–P5.

The total income gain per participant during high prices for both years is shown in Figure 9. It is calculated by multiplying the energy gain per bin with the respective electricity price before summing it over all bins.

The income gain in 2030 is in general much higher than in 2020 because of the higher price level in that showcases set. Comparing the income gains per participant for both years, the numbers are consistent with the energy gains shown in Figure 8.

As expected, P2 has the lowest income gains due to the smaller number of wind turbines in the simulated layout. Although all the other participants used the TC-RWP, they report very different income gains as also the energy gains in Figure 8 suggest. More specifically, the average income gain per wind turbine in 2020 lies for P2 with 2000 EUR in the same range as for P3 with 2300 EUR and P5 with 3100 EUR. P4 achieves with 7800 EUR a more than doubled income gain per wind turbine. This corresponds to the higher estimated wake loss (see Table 4) and thus a larger potential benefit of using WFFC.

440

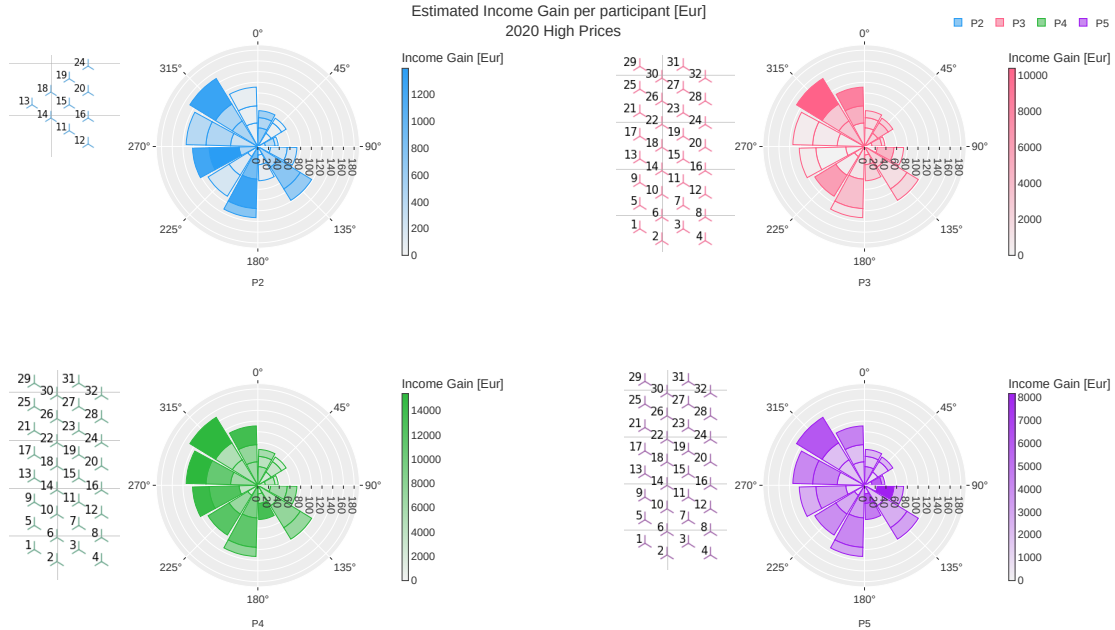


Figure 10. Income gain when using wind farm flow control (WFFC) in simulations with the wind inflow and price information for 2020 as shown in Figure 1. Each polar plot presents the results of one participant. The wind farm layout considered by this participant is shown on the left side of the polar plot.

The estimated income with WFFC is compared to the income under normal operation without WFFC. For each sector, the stacked gains are indicated as heat maps and reported per 7 m/s, 9 m/s and 11 m/s along the radial direction, with respect to the number of samples per bin.

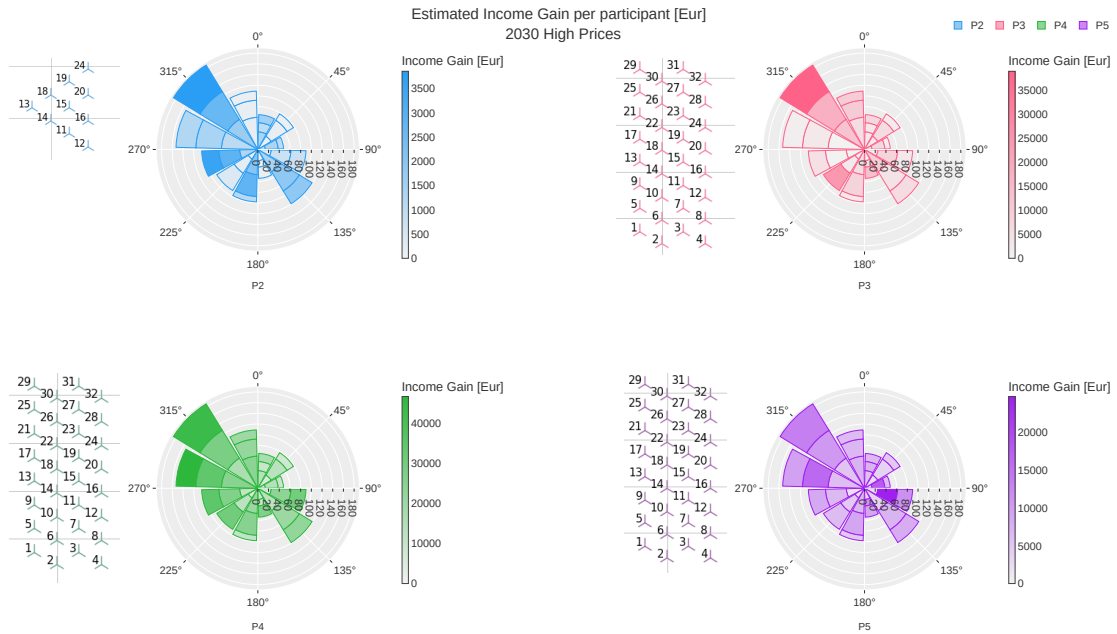


Figure 11. Income gain when using wind farm flow control (WFFC) in simulations with the wind inflow and price information for 2030 as shown in Figure 1. Each polar plot presents the results of one participant. The wind farm layout considered by this participant is shown on the left side of the polar plot.

The estimated income with WFFC is compared to the income under normal operation without WFFC. For each sector, the stacked gains are indicated as heat maps and reported per 7 m/s, 9 m/s and 11 m/s along the radial direction, with respect to the number of samples per bin.

The income gain per bin shown in Figures 10 and 11 is calculated as:

$$\text{Income Gain}_{\text{bin}} = [E_{\text{WFFC}_{\text{bin}}} - E_{\text{Normal Operation}_{\text{bin}}}] \cdot \mathbb{P}_{\text{bin}} \quad (8)$$

where \mathbb{P}_{bin} is the unit price [Eur/MWh] per bin. The variability in prices among the bins is low for the investigated high-prices showcase as shown in Figure 1. Accordingly, the income gain ~~reported per participating model~~ in Figures 10 and 11 ~~during high prices are driven mainly by the power gain estimated as the variance in prices among the bins for the investigated scenarios is low in Figure 1.~~ reported per participating model during the high prices is mainly driven by the estimated power gain.

Consequently for both 2020 and 2030 simulations, the sectors with estimated power gain are seen beneficial for the additional income via WFFC. However, the energy production is higher for the higher wind speed bins below rated and together with a larger number of samples per bin, the income gain for 9 and 11 m/s is expected to be higher. This is reflected by the darker colours observed at the outer rings of the polar plots in Figures 10 and 11.

Most significant across all participants and both years is the bin with a wind direction of 315° and a wind speed of 11 m/s, which has a much darker shade in the income gains compared to the normalised power gains. In the 2020 scenario, there is also a distinct difference between the 11 m/s and the 9 m/s bin in this sector. Participant P3 has in 2020 high power gains for eastern wind sectors (45°- 115°). The income gain for these sectors is, however, rather low due to the low number of samples in

455 these bins (illustrated by the radial axes in the polar plots). For P4, the dominant income gain for the 11 m/s-bins with western inflow (195° - 345°) is very obvious while the 7 m/s-bins show lighter colours in Figures 10 and 11 compared to the normalised power gain in Figures 6 and 7. In contrast to the other participants, P5 achieves also a high income gain for the 9 m/s bins in the 75° - and 115° -sectors. The income gain is even higher than for the 11 m/s- 315° -bin. This corresponds to the highest power gains that P5 reports in the wind sectors with 75° and 115° inflow.

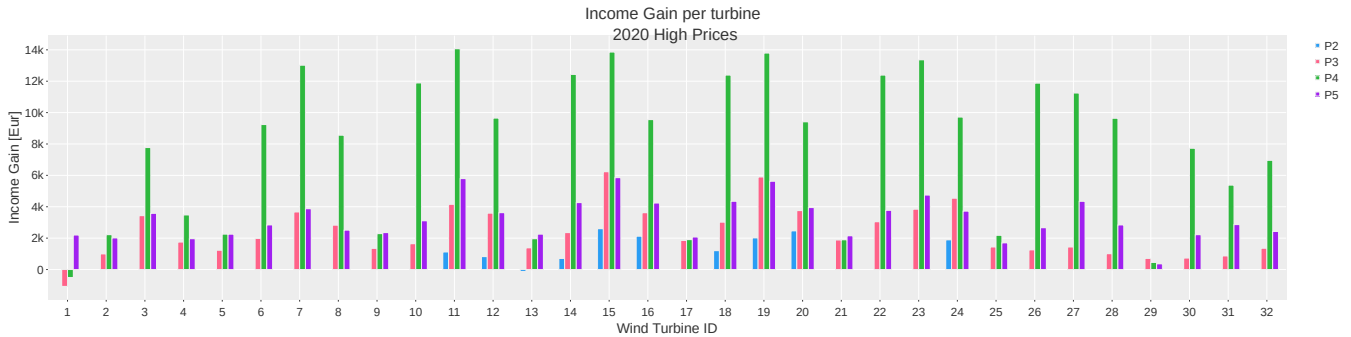


Figure 12. Income gain per wind turbine when using wind farm flow control (WFFC) in simulations with the wind inflow and price information for 2020 as shown in Figure 1. Each bar shows the difference between the income with WFFC and the income under normal operation without WFFC for one participant. The turbine IDs coincide with the numbering in the farm layout shown in e.g. Figure 11. Note that P2 investigates the subset layout and the results (in blue) are available for those 10 turbines only.

460 In order to investigate the contribution of the individual turbines to the total income gain, the reported values for 2020 and 2030 scenarios are broken down into the contribution of single wind turbines for the considered layouts in Figures 12 and 13. Each bar represents the income gain achieved by the turbine (with turbine IDs specified by the polar plots per participant in, e.g., Figure 10), where the colour indicates the participants. The TC-RWP subset with 10 wind turbines considered by P2 includes WT11–WT16, WT18–WT20, and WT24.

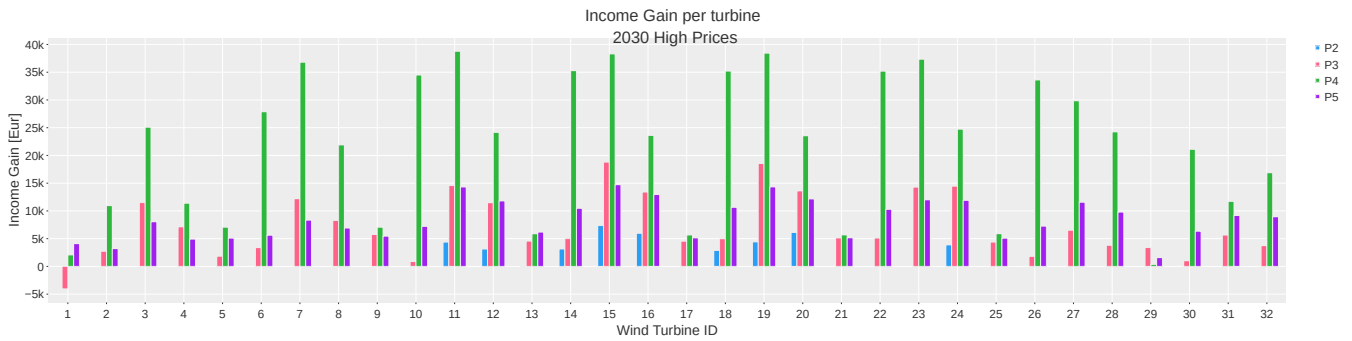


Figure 13. Income gain per wind turbine when using wind farm flow control (WFFC) in simulations with the wind inflow and price information for 2030 as shown in Figure 1. Each bar shows the difference between the income with WFFC and the income under normal operation without WFFC for one participant. The turbine IDs coincide with the numbering in the farm layout shown in e.g. Figure 11. Note that P2 investigates the subset layout and the results (in blue) are available for those 10 turbines only.

465 Although lower gains are reported due to the smaller layout investigated by P2, the normalised standard deviation (or the coefficient of variance) among the income gain per turbine reaches up to 60%, which is equivalent to P4 results with the 32-turbine layout. The highest variance is observed in P3 results, reaching more than 67% and the lowest is reported by P5 with less than 40%. This behaviour is the same for both 2020 and 2030, and it follows the trends presented in Figure 10 closely, where the sensitivity of the income gain to wind direction is observed to be the highest in P3 and lowest in P5 results for 2020
470 high electricity prices.

For the 2020 scenario, wind turbines with negative income gain are WT1 for P3 and P4 and WT13 for P2. These wind turbines are located in the upwind direction for inflow from the west where the bins contain many samples and relatively high prices (see Figure 1). The wind turbines with the highest income gains for all participants in 2020 are WT11, WT15 and WT19. These are located in the centre of the TC-RWP having the highest wake losses —thus the highest potential for wake mitigation
475 via WFFC — from any wind direction. Conversely, turbine WT29 which is located at the northwest corner is reported to have very low income gain by P3, P4 and P5 with full layout investigation. This WT is the first upstream WT for wind coming from the dominant northwestern direction, such that it does not benefit from reduced wake losses due to WFFC but is rather sacrificed for the benefit of the whole wind farm. In the TC-RWP subset used by P2, the lower income gains for WT11 and WT19 can be explained by the reduced wake effect as they are located at the outside of the 10-turbine layout close to an edge.

480 As north-west winds become more frequent for high prices in 2030, the profile of the waked turbines changes slightly and only P3 reports an income loss for WT1 in Figure 13. The most beneficial turbines in terms of the income gain are the same as in 2020. However, slight differences in trends can be observed at the turbines located around the edge of the considered layout; e.g., WT11 for P2, WT2 for P4, and WT31 for P3 and P5, typically an increase compared to 2020 results.

During both 2020 and 2030 scenarios, it is very interesting to compare P3 and P5 results as both have implemented combined
485 flow control strategies for their optimisation in full TC-RWP layout. Figures 12 and 13 show that the expected income gain provided by those two participants are indeed similar, especially for the turbines located in the centre of the wind farm.

Therefore, it can be said that the differences observed for the turbines at the edge of the layout (upstream turbines) are the main drivers for the disparity in the overall income gain per wind direction sector presented in Figures 10 and 11. It also indicates potentially different control settings applied to those upstream turbines, resulting in dissimilar power losses. However, the overall benefit in terms of wake mitigation is quite comparable for the investigated high price scenarios in 2020 and 2030, as also shown in Figure 9.

5 Conclusions and future work

This article presents the results of the FarmConnors market showcases which are the first to study WFFC in simulations with variable electricity prices. The results from five participants are analysed and compared to demonstrate the potential benefit of WFFC in electricity market scenarios. The analysis starts at the individual turbine level with the examination of a method that applies different control strategies depending on the electricity price, and finishes at the wind farm level with a comparative study of four different implementations of WFFC strategies simulating scenarios with high electricity prices in 2020 and 2030.

~~All reported results are deterministic values for particular simulation environments. The uncertainties of the actual price signals and especially of wind forecasts can be in the same range as the reported gains here. While this is out of the scope of this conceptual study, an uncertainty quantification should be included in future investigations for a comprehensive evaluation of the estimated benefits per participating model and to identify the true value of the technology in the variable market scenarios. For the former, further reading is encouraged on studies investigating the sensitivity and optimisation of widely used WFFC-oriented models under input uncertainties as well as the embedded uncertainties in the model parameters (Rott et al., 2018; Simley et al., 2018). Accordingly, the present study should be read as an initial assessment of potential benefits when considering electricity prices in the operation of wind farms. With minimum 1% normalised energy gains for high prices reported by the participating models, it certainly motivates further investigation of multi-objective WFFC.~~

The main outcomes and observations of the FarmConnors market showcases are summarised in the list below. They are given as qualitative statements due to the associated uncertainties in the reported benefits and sorted according to the steps followed in the analysis.

Benefit of flexible, market-driven, multi-objective control The benefit of revenue maximisation and structural load reduction as control objectives depending on the electricity prices is demonstrated at a single wind turbine. Extending this strategy to the operation of wind farms can be beneficial for all stakeholders, where the power production is increased when high demands lead to high electricity prices, and decreased when low demands cause low prices.

Limited model capabilities to include structural load alleviation in the objective function The original FarmConnors market showcases defined three sets from which only the high-price scenarios could be analysed here. This is due to the lack of participating models for the other sets which included constraining or reducing structural loads in the control objectives.

520 **Impact of wind farm layout** As already observed ~~for~~in previous WFFC power maximisation studies, the number of turbines in a wind farm and its layout clearly influences the achievable income gain per wind sector. The dominant wind direction and the upstream or downstream position of wind turbines has a significant impact on the operational strategy that is best suited to reduce wake losses in a particular setting. The power gain per wind speed and direction bin then translates into income gain through the electricity prices distribution and relative frequency of occurrences.

525 **Consistent results for different participants** The normalised gains of the four analysed WFFC implementations ~~is consistent across the simulated cases~~are in good agreement. Despite the different control strategies and simulation set-ups, similar normalised energy gains are achieved. In particular, the two participants that apply wake steering ~~show good agreement with respect to the power gains in different wind sectors~~agree well in which wind sectors low or high power gains are achieved. The two participants that combine wake steering with axial induction control have more diverse results which is likely due to the larger range of potential control actions but lead to similar gains in total for the overall period. The differences between the models seen in the estimated wake losses are represented in the energy gain where WFFC
530 increased the energy gain the most for the model with the highest wake loss.

~~**Benefit of maximising income instead of power gain** Maximising the income gain instead of the commonly maximised power gain has advantages. Unfavourable wind conditions in which the operational strategy only slightly increases the power gains can still result in high income gains if/when the electricity prices are high at the same time.~~

535 **Combination of factors in income gain** For particular meteorological conditions and layout, it has been ~~showed~~shown how the specific combination of different factors, such as price distribution among wind speed and direction bins, their frequency of occurrence, available power for such bins (wind-speed dependent), wake losses reduction or WFFC strategy applied, makes the difference when it comes to income gain, rather than just the contribution of each factor independently. This combination could be integrated into the design of advanced WFFC strategies, beyond power maximisation. It also reflects how the time evolution of such combination can affect the economic assessment for a wind farm during its
540 lifetime, e.g., if/when electricity market evolves.

The reported numerical results are deterministic values for particular simulation environments. The uncertainties of the actual price signals and especially of wind forecasts can be in the same range as the reported gains here. While this is out of the scope of this conceptual study, an uncertainty quantification should be included in future investigations for a comprehensive evaluation of the estimated benefits per participating model and to identify the true value of the technology in the variable market scenarios. For the former, further reading is encouraged on studies investigating the sensitivity and optimisation of widely used WFFC-oriented models under input uncertainties as well as the embedded uncertainties in the model parameters (Rott et al., 2018; Simley et al., 2020; Quick et al., 2020; Hulsman et al., 2020; van Beek et al., 2021; Howland, 2021). Accordingly, the present study should be read as an initial assessment of potential benefits when considering electricity prices in the operation of wind farms. With minimum 1% normalised energy gains for high prices reported by the participating models, it certainly
550 motivates further investigation of multi-objective WFFC.

Moreover, the lack of participation in the showcases sets that also consider structural load alleviation motivates further research towards developing WFFC beyond power maximisation. These algorithms should be tested in extensive simulation studies covering a variety of future energy scenarios to evaluate their performance.

555 This will also help to quantify the benefit of maximising the income instead of the power gain as this study indicates. Unfavourable wind conditions in which the operational strategy only slightly increases the power gains can still result in high income gains if the electricity prices are high at the same time.

Code availability. The notebooks for the market showcases results, including data snippets, can be achieved via the public repository of FarmConnors Market Showcases (Göçmen et al., 2022).

560 *Data availability.* All the data used in FarmConnors market showcases are available for non-commercial purposes. Please contact us using the details provided under the FarmConnors market showcases wiki page https://farmconnors-market-showcase.readthedocs.io/en/latest/contact_us.html.

565 *Author contributions.* KK, TG and IE organised the FarmConnors market showcases, disseminated the showcases, prepared and shared the data sets, analysed the results and drafted most of the manuscript. LAAR, MAS, JF, JM, VP and IS participated in the FarmConnors market showcases, prepared and ran the simulations and provided descriptions of their participating algorithms in sections 2 and 3. They are listed in alphabetical order of the last names.

Competing interests. JM is a member of the editorial board of Wind Energy Science. The peer-review process is guided by an independent editor, and the authors have also no other competing interests to declare.

570 *Acknowledgements.* The authors would like to thank Michael Smailes from ORE Catapult for his support on the organisation and dissemination of the FarmConnors market showcases. Additionally, the authors thank Kaushik Das, Matti Juhani Koivisto, Juan Pablo Murcia Leon and Polyneikis Kanellas from DTU Wind Energy for the data generation by simulating the energy scenarios using the DTU Balancing Tool Chain and their contributions to the definition of the FarmConnors Market Showcases.

The FarmConnors market showcases are organised and conducted under the FarmConnors project, funded by the European Union's Horizon 2020 research and innovation programme with grant agreement No 857844. The contribution by VP was funded nationally by Stiftung Energieforschung Baden-Württemberg (FKZ: A341 21).

575 References

- Andersson, L. E., Anaya-Lara, O., Tande, J. O., Merz, K. O., and Imsland, L.: Wind farm control - Part I: A review on control system concepts and structures, *IET Renewable Power Generation*, 15, 2085–2108, <https://doi.org/10.1049/rpg2.12160>, 2021.
- Astrain Juangarcia, D., Eguinoa, I., and Knudsen, T.: Derating a single wind farm turbine for reducing its wake and fatigue, *Journal of Physics: Conference Series*, 1037, 032 039, <https://doi.org/10.1088/1742-6596/1037/3/032039>, 2018.
- 580 Bastankhah, M. and Porté-Agel, F.: Experimental and theoretical study of wind turbine wakes in yawed conditions, *Journal of Fluid Mechanics*, 806, 506–541, <https://doi.org/10.1017/jfm.2016.595>, 2016.
- Bastankhah, M. and Porté-Agel, F.: A new analytical model for wind-turbine wakes, *Renewable Energy*, 70, 116–123, <https://doi.org/https://doi.org/10.1016/j.renene.2014.01.002>, special issue on aerodynamics of offshore wind energy systems and wakes, 2014.
- 585 Blondel, F. and Cathelain, M.: An alternative form of the super-Gaussian wind turbine wake model, *Wind Energy Science*, 5, 1225–1236, <https://doi.org/10.5194/wes-5-1225-2020>, 2020.
- Bossanyi, E.: Optimising yaw control at wind farm level, *Journal of Physics: Conference Series*, 1222, 012 023, <https://doi.org/10.1088/1742-6596/1222/1/012023>, 2019.
- Bossanyi, E. A.: Further load reductions with individual pitch control, *Wind Energy*, 8, 481–485, <https://doi.org/https://doi.org/10.1002/we.166>, 2005.
- 590 Crespo, A. and Hernández, J.: Turbulence characteristics in wind-turbine wakes, *Journal of Wind Engineering and Industrial Aerodynamics*, 61, 71–85, [https://doi.org/https://doi.org/10.1016/0167-6105\(95\)00033-X](https://doi.org/https://doi.org/10.1016/0167-6105(95)00033-X), 1996.
- D.C. van der Hoek; and Kanev, S.: Reducing Wind Turbine Loads with Down-Regulation, Tech. Rep. September, ECN E–17-032, <http://resolver.tudelft.nl/uuid:fc6658f8-106b-4cf0-8d67-50c99cb895aa>, 2017.
- 595 Dimitrov, N., Kelly, M. C., Vignaroli, A., and Berg, J.: From wind to loads: wind turbine site-specific load estimation with surrogate models trained on high-fidelity load databases, *Wind Energy Science*, 3, 767–790, <https://doi.org/10.5194/wes-3-767-2018>, 2018.
- Doekemeijer, B. M., van der Hoek, D., and van Wingerden, J. W.: Closed-loop model-based wind farm control using FLORIS under time-varying inflow conditions, *Renewable Energy*, 156, 719–730, <https://doi.org/10.1016/j.renene.2020.04.007>, 2020.
- Eguinoa, I., Göçmen, T., Garcia-Rosa, P. B., Das, K., Petrović, V. I., Kölle, K., Manjock, A., Koivisto, M. J., and Smailes, M.: Wind farm
600 flow control oriented to electricity markets and grid integration: initial perspective analysis, *Advanced Control for Applications*, n/a, e80, <https://doi.org/https://doi.org/10.1002/adc2.80>, e80 ADC2-21-0023, 2021.
- Fleming, P., King, J., Bay, C. J., Simley, E., Mudafort, R., Hamilton, N., Farrell, A., and Martinez-Tossas, L.: Overview of FLORIS updates, *Journal of Physics: Conference Series*, 1618, 022 028, <https://doi.org/10.1088/1742-6596/1618/2/022028>, 2020.
- Gambier, A.: Pitch Control of Three Bladed Large Wind Energy Converters—A Review, *Energies*, 14, 8083, <https://doi.org/10.3390/en14238083>, 2021.
- 605 Gebraad, P. M. O., Teeuwisse, F. W., van Wingerden, J. W., Fleming, P. A., Ruben, S. D., Marden, J. R., and Pao, L. Y.: Wind plant power optimization through yaw control using a parametric model for wake effects—a CFD simulation study, *Wind Energy*, 19, 95–114, <https://doi.org/https://doi.org/10.1002/we.1822>, 2016.
- Göçmen, T., Campagnolo, F., Duc, T., Eguinoa, I., Andersen, S. J., Petrović, V., Imširović, L., Braunbehrens, R., Feng, J., Liew, J., Baun-
610 gaard, M., van der Laan, M. P., Qian, G., Aparicio-Sanchez, M., González-Lope, R., Dighe, V., Becker, M., van den Broek, M., van Wingerden, J.-W., Stock, A., Cole, M., Ruisi, R., Bossanyi, E., Requate, N., Strnad, S., Schmidt, J., Vollmer, L., Blondel, F., Sood, I.,

- and Meyers, J.: FarmConnors Wind Farm Flow Control Benchmark: Blind Test Results, *Wind Energy Science Discussions*, 2022, 1–69, <https://doi.org/10.5194/wes-2022-5>, 2022.
- Göçmen, T., Kölle, K., and Eguinoa, I.: FarmConnors Market Showcases Repository, <https://doi.org/10.5281/zenodo.6203808>, 2022.
- 615 Houck, D. R.: Review of wake management techniques for wind turbines, *Wind Energy*, 25, 195–220, <https://doi.org/https://doi.org/10.1002/we.2668>, 2022.
- Howland, M. F.: Wind farm yaw control set-point optimization under model parameter uncertainty, *Journal of Renewable and Sustainable Energy*, 13, 043 303, <https://doi.org/10.1063/5.0051071>, 2021.
- Hulsman, P., Andersen, S. J., and Göçmen, T.: Optimizing wind farm control through wake steering using surrogate models based on high-
620 fidelity simulations, *Wind Energy Science*, 5, 309–329, <https://doi.org/10.5194/wes-5-309-2020>, 2020.
- Jonkman, J. M. and Buhl, M. L. J.: FAST User’s Guide - Updated August 2005, Tech. Rep. 6, National Renewable Energy Laboratory (NREL), Golden, CO, <https://doi.org/10.2172/15020796>, 2005.
- Kanellas, P., Das, K., Gea-Bermudez, J., and Sørensen, P.: *Balancing Tool Chain: Balancing and automatic control in North Sea Countries in 2020, 2030 and 2050*, Tech. rep., <https://orbit.dtu.dk/en/publications/balancing-tool-chain-balancing-and-automatic-control-in-north-sea>,
625 2020.
- Katic, I., Højstrup, J., and Jensen, N. O.: A simple model for cluster efficiency, in: European wind energy association conference and exhibition, vol. 1, pp. 407–410, 1986.
- Kheirabadi, A. C. and Nagamune, R.: A quantitative review of wind farm control with the objective of wind farm power maximization, *Journal of Wind Engineering and Industrial Aerodynamics*, 192, 45 – 73, <https://doi.org/https://doi.org/10.1016/j.jweia.2019.06.015>, 2019.
- 630 Kölle, K., Göçmen, T., Eguinoa, I., Das, K., Koivisto, M. J., Leon, J. P. M., Smailes, M., and Kanellas, P.: FarmConnors Market Showcases for Wind Farm Flow Control, 19th Wind Integration Workshop, Virtual, ISBN 978-3-9820080-8-0, 2020.
- Kretschmer, M., Pettas, V., and Cheng, P. W.: Effects of Wind Farm Down-Regulation in the Offshore Wind Farm Alpha Ventus, ASME 2019 2nd International Offshore Wind Technical Conference, <https://doi.org/10.1115/IOWTC2019-7554>, 2019.
- Lanzilao, L. and Meyers, J.: A new wake-merging method for wind-farm power prediction in the presence of heterogeneous background
635 velocity fields, *Wind Energy*, 25, 237–259, <https://doi.org/10.1002/we.2669>, 2021.
- Meyers, J., Bottasso, C., Dykes, K., Fleming, P., Gebraad, P., Giebel, G., Göçmen, T., and van Wingerden, J.-W.: Wind farm flow control: prospects and challenges, submitted, 2022.
- NREL: FLORIS. Version 2.4, <https://github.com/NREL/floris>, 2021.
- Ott, S. and Nielsen, M.: Developments of the offshore wind turbine wake model Fuga, no. 0046 in DTU Wind Energy E, DTU Wind Energy,
640 Denmark, <https://orbit.dtu.dk/en/publications/developments-of-the-offshore-wind-turbine-wake-model-fuga>, 2014.
- Pedersen, M. M., van der Laan, P., Friis-Møller, M., Rinker, J., and Réthoré, P.-E.: DTUWindEnergyPyWake: PyWake, <https://doi.org/10.5281/zenodo.2562662>, 2019.
- Pettas, V. and Cheng, P. W.: Down-regulation and individual blade control as lifetime extension enablers, *Journal of Physics: Conference Series*, 1102, 012 026, <https://doi.org/10.1088/1742-6596/1102/1/012026>, 2018.
- 645 Pettas, V. and Cheng, P. W.: Towards flexible wind turbine operation : Optimization with flexible control, *Wind Energy Science Conference 2021 (WESC 2021)*, <https://doi.org/10.5281/ZENODO.5017956>, 2021.
- Pettas, V., Salari, M., Schlipf, D., and Cheng, P. W.: Investigation on the potential of individual blade control for lifetime extension, *Journal of Physics: Conference Series*, 1037, 032 006, <https://doi.org/10.1088/1742-6596/1037/3/032006>, 2018.

- Quick, J., King, J., King, R. N., Hamlington, P. E., and Dykes, K.: Wake steering optimization under uncertainty, *Wind Energy Science*, 5, 413–426, <https://doi.org/10.5194/wes-5-413-2020>, 2020.
- 650 Rott, A., Doekemeijer, B., Seifert, J. K., van Wingerden, J.-W., and Kühn, M.: Robust active wake control in consideration of wind direction variability and uncertainty, *Wind Energy Science*, 3, 869–882, <https://doi.org/10.5194/wes-3-869-2018>, 2018.
- Siemens Gamesa AS: Siemens Gamesa Power Boost technology, <https://www.siemensgamesa.com/products-and-services/offshore/wind-turbine-sg-14-222-dd>, brochure; "<https://www.siemensgamesa.com/products-and-services/offshore/wind-turbine-sg-14-222-dd>", 655 2020.
- Simley, E., Fleming, P., and King, J.: Design and analysis of a wake steering controller with wind direction variability, *Wind Energy Science*, 5, 451–468, <https://doi.org/10.5194/wes-5-451-2020>, 2020.
- Simley, E., Fleming, P., Girard, N., Alloin, L., Godefroy, E., and Duc, T.: Results from a wake-steering experiment at a commercial wind plant: investigating the wind speed dependence of wake-steering performance, *Wind Energy Science*, 6, 1427–1453, [https://doi.org/10.5194/wes-](https://doi.org/10.5194/wes-6-1427-2021) 660 6-1427-2021, 2021.
- Sood, I. and Meyers, J.: Validation of an analytical optimization framework for wind farm wake steering applications, AIAA SCITECH 2022 Forum, <https://doi.org/10.2514/6.2022-1920>, 2022.
- TotalControl: *Reference Wind Power Plant*, Tech. Rep. TotalControl Deliverable D1.3, <https://orbit.dtu.dk/en/publications/reference-wind-power-plant-d103>, 2018.
- 665 van Beek, M. T., Viré, A., and Andersen, S. J.: Sensitivity and Uncertainty of the FLORIS Model Applied on the Lillgrund Wind Farm, *Energies*, 14, <https://doi.org/10.3390/en14051293>, 2021.
- van Wingerden, J. W., Fleming, P. A., Göçmen, T., Eguinoa, I., Doekemeijer, B. M., Dykes, K., Lawson, M., Simley, E., King, J., Astrain, D., Iribas, M., Bottasso, C. L., Meyers, J., Raach, S., Kölle, K., and Giebel, G.: Expert Elicitation on Wind Farm Control, *Journal of Physics: Conference Series*, 1618, 022 025, <https://doi.org/https://doi.org/10.1088/1742-6596/1618/2/022025>, 2020.
- 670 Virtanen, P., Gommers, R., Oliphant, T. E., Haberland, M., Reddy, T., Cournapeau, D., Burovski, E., Peterson, P., Weckesser, W., Bright, J., van der Walt, S. J., Brett, M., Wilson, J., Millman, K. J., Mayorov, N., Nelson, A. R. J., Jones, E., Kern, R., Larson, E., Carey, C. J., Polat, İ., Feng, Y., Moore, E. W., VanderPlas, J., Laxalde, D., Perktold, J., Cimrman, R., Henriksen, I., Quintero, E. A., Harris, C. R., Archibald, A. M., Ribeiro, A. H., Pedregosa, F., van Mulbregt, P., and SciPy 1.0 Contributors: SciPy 1.0: Fundamental Algorithms for Scientific Computing in Python, *Nature Methods*, 17, 261–272, <https://doi.org/10.1038/s41592-019-0686-2>, 2020.