

Going beyond BEM with BEM: an insight into dynamic inflow effects on floating wind turbines

Francesco Papi¹, Jason Jonkman², Amy Robertson², Alessandro Bianchini¹

¹Department of Industrial Engineering, Università degli Studi di Firenze, Florence, 50139, Italy

5 ²National Renewable Energy Laboratory, Golden, CO, USA

Correspondence to: Francesco Papi (fr.papi@unifi.it) or Alessandro Bianchini (alessandro.bianchini@unifi.it)

Abstract. Blade element momentum (BEM) theory is the backbone of many industry-standard wind turbine aerodynamic models. To be applied to a broader set of engineering problems, BEM models have been extended since their inception and now include several empirical corrections. These models have benefitted from decades of development and refinement and have been extensively used and validated, proving their adequacy in predicting aerodynamic forces of horizontal-axis wind turbine rotors in most scenarios. However, the analysis of floating offshore wind turbines (FOWTs) introduces new sets of challenges, especially if new-generation large and flexible machines are considered. In fact, due to the combined action of wind and waves and their interaction with the turbine structure and control system, these machines are subject to unsteady motion and thus unsteady inflow on the wind turbine's blades, which could put BEM models to the test. Consensus has not been reached on the accuracy limits of BEM in these conditions. This study contributes to the ongoing research on the topic by systematically comparing four different aerodynamic models, ranging from BEM to computational fluid dynamics, in an attempt to shed light on the unsteady aerodynamic phenomena that are at stake in FOWTs and whether BEM is able to model them appropriately. Simulations are performed on the UNAFLOW 1:75 scale rotor during imposed harmonic surge and pitch motion. Experimental results are available for these conditions and are used for baseline validation. The rotor is analysed both in rated operating conditions and in low wind speeds, where unsteady aerodynamic effects are expected to be more pronounced. Results show that BEM, despite its simplicity, can adequately model the aerodynamics of FOWTs in most conditions if augmented with a dynamic inflow model.

1 Introduction

Within the wind energy research community, many are questioning the validity and applicability of the aerodynamic theories used in medium-fidelity engineering tools commonly applied to floating offshore wind turbine (FOWT) design. Aerodynamic models based on blade element momentum (BEM) theory are still at the core of many design codes (Veers et al., 2022). With certain assumptions, BEM theory allows for the effects of the wind turbine's wake to be estimated on the inflow local to the rotor blades. Thereafter, aerodynamic loads can be determined using blade element theory, i.e., assuming that each blade section behaves as a 2D airfoil. The added value of BEM theory is that it allows a fundamental understanding of the effects of

30 varying geometrical and aerodynamic parameters on a wind turbine (Leishman, 2016). It also works very well in practice,
which is undoubtedly important in engineering. The limitations of this aerodynamic theory are, however, apparent. As
explained in detail in this paper, various engineering models have been developed and implemented into BEM-based
aerodynamic models to extend their range of validity. For instance, empirical corrections have enabled the extension of these
35 models to compute aerodynamic loads in the vortex ring state (VRS) or turbulent wake state (TWS), as detailed in (Sørensen
et al., 1998). Empirical corrections to model tip and root losses, nonuniform inflow, unsteady inflow, and skewed flow are also
introduced into most design-level BEM-based codes. Critical comparisons of medium-fidelity aerodynamic theories on
onshore rotors have been performed in the past, examples of which are the studies by (Perez-Becker et al., 2020) and (Boorsma
et al., 2020). While BEM-based models have been found to perform adequately, some deficiencies in the prediction of cyclic
loads are highlighted.

40 Floating wind turbines introduce additional challenges from an aerodynamic standpoint, as the rotor is subject to unsteady
motion. Some authors have highlighted how rotor-wake interaction is possible in a FOWT due to the rotor rocking in and out
of its own wake (Veers et al., 2022). This phenomenon was observed in numerical simulations by (Sebastian and Lackner,
2013) and (Ramos-García et al., 2022), when simulating high-frequency and high-amplitude platform oscillations in the wind
heading direction, i.e., surge or pitch oscillations. This is considered a source of concern because if rotor-wake interaction
45 occurs, the streamtubes upon which the momentum balance is applied are effectively choked, and momentum theory is
invalid. Moreover, some have come to the conclusion that in these conditions the rotor may enter wake states where momentum
theory is invalid, such as the TWS or VRS, for which empirical corrections have previously been developed. On the other
hand, others have found BEM models to compare well to actuator disk simulations in terms of global rotor forces on a surging
rotor (de Vaal et al., 2012).

50 The underlying assumption when applying momentum theory to a rotor is that it is in an inertial reference frame. Momentum
balance is applied in the rotor reference frame, and because the rotor is static or moving with constant speed (this could be the
case for a helicopter rotor), rotor movement is treated the same as wind speed, as its only effect is to introduce an apparent
wind speed on the blades themselves. When the rotor motion becomes unsteady, the reference frame is not inertial, and thea
BEM momentum balance is invalid. cannot be performed in such a reference frame. Many BEM-based codes simply ignore
55 this hypothesis and perform the momentum balance in the rotor reference frame, regardless of whether or not it is moving.
Despite this being theoretically inaccurate, some have noticed better agreement with experiments and higher-fidelity methods
when the rotor apparent velocity caused by its motion is included in the momentum balance, rather than it being accounted for
only in the blade element part of the BEM balance (Boorsma and Caboni, 2020). A possible explanation is that including the
rotor structural velocity only in the blade element part of the momentum balance and not in the momentum part is also incorrect,
60 as the wake deficit varies, and conservation of momentum cannot be applied without considering additional inertial terms. As
noted by (Boorsma and Caboni, 2020; Mancini et al., 2022), at the frequencies and amplitudes typical of a FOWT, the main
phenomenon the rotor experiences is an “apparent wind effect” due to the structural motion, rather than the rotor moving in
and out of its own wake.

65 On the other hand, other authors have proposed models in which the momentum balance is performed in a static, inertial, reference frame. One of the most notable recent examples is that of Ferreira et al., (Ferreira et al., 2022) which proposed to apply the momentum balance for a FOWT in the static reference frame and developed a correction to account for the dynamic inflow. One of the benefits of this approach is that it effectively separates flow reversal on the rotor from wake states such as VRS, which, according to the authors, are a state of the streamtube, and not directly correlated to flow reversal on the rotor. In addition, as argued by de Vaal et al. (de Vaal et al., 2012), in the case of large rotor displacements, the question is whether 70 the induced velocity field follows the oscillating FOWT or the blades move in a velocity gradient fixed in space. Both scenarios are limit cases, and, as observed in (de Vaal et al., 2012), the actual aerodynamic behavior of the rotor depends on the frequency of the oscillation with respect to the inertia of the flow.

~~Despite these different points of view in the scientific community, it can be argued that applying the momentum balance in the rotor, non inertial frame is in practice no different from considering unsteady inflow on the rotor. This condition is routinely 75 treated in BEM models, and engineering corrections for dynamic inflow exist to extend the validity of BEM to these conditions. Moreover, although momentum theory is invalid when the rotor enters TWS or VRS, empiric corrections such as Glauert's correction for TWS (Buhl, 2005) are implemented into engineering codes. Therefore, if the rotor enters such states as a consequence of unsteady motion and the way the momentum balance is applied, it is the validity of these engineering corrections that should be challenged, rather than momentum theory itself.~~

80 The performance of momentum theory and its empirical correction models as implemented in a state-of-the-art wind turbine simulation tool when simulating a rotor undergoing large motions is discussed in this paper. The paper questions the validity of BEM models when they are used outside of their applicability range, i.e., whether these BEM-based engineering models can practically go beyond BEM's limitations. In particular, the predictive capabilities of the—formally incorrect—approach of considering structural velocities as apparent inflow in the BEM balance and using a dynamic wake model to account for the 85 changing conditions on the rotor in such a scenario are evaluated. This perspective on the problem is thought of particular relevance for industry, as it can help modelers choose the most suitable approach for their specific needs. BEM results computed on the UNAFLOW (Bernini et al., 2018) 1:75 scale rotor are compared to lifting-line free vortex wake (LLFVW) and actuator line model (ALM) results. Experimental results (Fontanella et al., 2021; Mancini et al., 2020) are used for validation when available. The numerical models, with their respective advantages and shortcomings, and test case are 90 introduced in Sect. 2. Section 3 presents results of tests with surge oscillations during rotor operation at rated wind speed, followed by pitch oscillations in cut-in wind conditions, where, we argue, rotor-wake interaction is most likely to occur. Section 4 draws some conclusions of the study and proposes a new perspective on the real capability of the BEM theory to deal with the complex phenomena taking place in FOWTs.

2 Methods

95 In this section, we explain the main details of the aerodynamic theories that are compared in this work, as they are implemented in the codes used in this comparison. We also describe the most important details of the experimental apparatus and test case used in the code-to-code comparison endeavor and the examined test cases.

2.1 Numerical models

Four different aerodynamic models are compared in this work, namely BEM, dynamic BEM (DBEM), LLFVW, and ALM.
100 All the tested models are implemented within the common framework of OpenFAST v3.1.0 (OF). In particular, the standalone version of OpenFAST's aerodynamic module AeroDyn is used. An additional aerodynamic model, the ALM model, is implemented directly in AeroDyn's glue code OpenFAST instead. Despite this difference, blade aerodynamics are handled by the same module, AeroDyn, in all cases. The main characteristics of the numerical models are described in the following.

Blade element model - To isolate the differences between the wake modelling theories, all the tested aerodynamic theories,
105 regardless of the strategy used to model the wake, use the same blade model. Each blade is divided into twenty segments, small enough to consider the blade geometry constant within each of them. Tabulated lift and drag coefficients computed for various Reynolds numbers and corrected for 3D effects are assigned to each section. Once the relative velocity – dependent on the wake model and inflow conditions – is known, the aerodynamic lift (F_l) and drag (F_d) forces can be computed for each section as $F_{l,d} = 1/2 \rho c C_{l,d} U_{rel}^2$, where $C_{l,d}$ is the lift or drag coefficient, ρ is the air density, c is the blade chord and U_{rel} is the
110 relative wind speed to each blade section. Aerodynamic coefficients for the UNAFLOW rotor are derived from wind tunnel measurements, as described in (Fontanella et al., 2021). In addition, some of the wake models are tested using the tabulated Cl and Cd (*static polars* in the following), while others are also tested with Gonzalez's variant of the Beddoes-Leishman dynamic stall and unsteady airfoil aerodynamic model (Damiani and Hayman, 2019) (*dynamic polars*). Unsteady airfoil aerodynamic effects, including those that occur in the attached-flow regime, grow increasingly larger as the airfoil reduced frequency
115 increases (for an isolated oscillating airfoil it is defined as $f_{rc} = \pi f c / U_\infty$, where f is the oscillation frequency and U_∞ is the incoming wind speed) (Leishman, 2016). In this work, inflow angles are mostly kept below stall, and thus attached-flow unsteady aerodynamic effects have the largest impact on results. These are mainly caused by two effects: added mass and shed vorticity, with the latter being by far the most relevant at the reduced frequencies analysed in this work. The widespread consensus is that ~~these effects the latter~~ are intrinsically included in higher-order aerodynamic theories such as LLFVW and
120 ALM and do not require dynamic polars to model ~~this effect~~em. Therefore, static polars are used for the aerodynamic models in this study.

Blade element momentum - The first aerodynamic theory that is compared is blade element momentum theory, referred to in the following simply as BEM. A full theoretical overview and background of this theory can be found in (Burton, 2001; Hansen, 2008). In this work the authors assume the reader is familiar with this aerodynamic theory and only the main details
125 of the specific BEM implementation used in this work will be introduced. More specifically, the guaranteed BEM solution

algorithm developed by (Ning, 2013) and implemented in AeroDyn v15 (Ning et al., 2015) is used herein. The three blades are divided into a series of segments, and the momentum balance is applied for each segment of each blade separately. Notably, this deviates from the classical BEM approach of dividing the rotor into a series of annular streamtubes and applying the momentum balance on each streamtube. Prandtl’s tip and root loss corrections are included directly in the momentum balance, as are Glauert’s high-induction empirical correction, as adapted by (Buhl, 2005). In addition, structural velocities are considered within the momentum balance directly. Thus, although equations in this form will not be explicitly found in the AeroDyn code, the axial ~~momentum balance~~velocity at the rotor plane for each blade node i can be written as:

$$U_{relX}^i = (1 - a^i)(U_{\infty X}^i + U_{strX}^i) \quad (1)$$

where a^i is the axial induction factor for node i , $U_{\infty X}$ is the incoming wind speed in the axial direction, and U_{strX} is the streamtube axial velocity. Therefore, in case of a complex motion, such as a platform pitching action, a separate momentum balance is applied for each blade node with different relative velocities. It is important to point out that Eq. (1) is for discussion purposes only, and refers exclusively to axial velocity, neglecting the contribution of tangential induction. After the momentum balance is performed, the axial induction is corrected to account for the effect of skewed inflow, using the Pitt–Peters skewed inflow model (Ning et al., 2015). It is immediately apparent to the more experienced reader how this theory deviates significantly from the basic BEM theory, which is more rigorously formulated and valid for a static, infinite-blade actuator disk subject to constant and uniform inflow, aligned with the rotor disk itself. Moreover, some of the empirical corrections that were developed in time to extend the range of applicability of BEM-based models, such as Glauert’s high-induction correction, are technically valid over the entirety of an actuator disk, and there is no theoretical guarantee that they can be applied to a single blade element, as discussed by (Buhl, 2005). In addition to these inconsistencies between BEM theory and BEM-based aerodynamic models, the validity of Eq. (1) is debated in the context of FOWTs. In fact, such an equation can be derived based on a momentum balance ~~can only be~~ performed in an inertial reference frame in steady-state inflow and operating conditions. Therefore, Eq. (1) is strictly valid only when $U_{str}^i = const$ and $U_{\infty}^i = const$. In practice, however, this is often ignored, and Eq. (1) is applied to non-inertial FOWTs as well, leading at times to erroneous considerations regarding the behaviour of these systems. This issue was recently raised by (Ferreira et al., 2022). Despite this approach being theoretically incorrect, however, (Boorsma and Caboni, 2020) found that including platform velocity in the momentum balance, as if the balance was performed in the non-inertial reference frame of the FOWT rotor, improved the agreement with higher-order models and experiments during simplified tests. (Mancini et al., 2022) discussed the issue further, and found improved agreement with higher-order aerodynamic theories in forced pitch and yaw tests. According to (Mancini et al., 2022), these models fully qualify as engineering models or “corrections”, as they are based on empirical observations and do not possess a solid theoretical basis. Indeed, these models, including those tested herein, are only loosely related to BEM theory, and thus qualify as “BEM-based” models. In this work, results and discussion are relative to BEM and DBEM models in which the momentum balance is performed in the rotor reference frame. As such, the effect of the rotor moving in a fixed induced velocity field that may occur at specific oscillation frequencies cannot be captured by this kind of model.

Finally, while some of these considerations, such as performing a separate momentum balance for each blade, are valid only
160 for the specific BEM implementation at hand, others, such as the application of Glauert's high-induction correction, are
common practice within the industry and can thus be considered more general.

Dynamic blade element momentum - In addition to the BEM theory discussed in the previous paragraph, DBEM introduces
an additional empirical correction to account for dynamic inflow effects. The dynamic correction model used herein is Øye's
two-equation low-pass filtering approach (Snel and Schepers, 1995). The model makes use of two time constants, τ_1 and τ_2
165 (Snel and Schepers, 1995), which have been calibrated based on LLFVW simulations. Dynamic inflow models have originally
been developed to capture the rotor load over or under shoots that were observed in the case of a step change in rotor speed or
blade pitch. Since most of these models are empirical, there is no guarantee that they can reproduce the wake dynamics in the
case of FOWT motions, when blade inflow is continuously changing. For the more interested reader, a detailed discussion
regarding dynamic inflow models for FOWTs is provided in (Ferreira et al., 2022).

170 **Lifting-line free vortex wake** - LLFVW is a medium-fidelity wake model. The LLFVW model implemented within AeroDyn,
cOnvecting LAgrangian Filaments (OLAF) (Shaler et al., 2020), is used in this work.

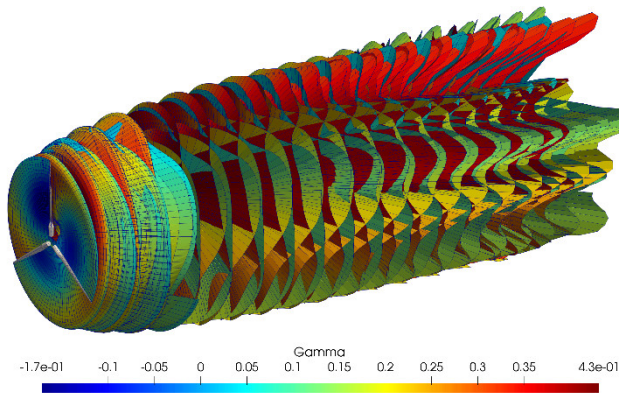


Figure 1: Representation of the vortex elements in the wind turbine wake in the LLFVW model. Vortices are coloured by circulation values.

175 The blades are modelled as a series of vortex rings. At each time step, the rings are shed into the wake and form a vortex
lattice, as shown in Fig. 1. As explained in detail in (Van Garrel, 2003), the circulation of the vortex rings is found by equating
the blade element forces to the Kutta–Joukowski theorem. The main model settings are as follows: Near wake is free, two
revolutions long, and modelled with full shed and trailing vorticity. Far wake is modelled by lumping the vorticity into the tip
and root vortices only. It is six revolutions long and also free. Induced velocities are computed using Biot–Savart's law. The
180 Vastatas core-vortex model is used, and the initial vortex core radius is set to be 5% of the local chord. Core radius increases
with vortex age, depending on viscous diffusion δ , set to 100 in this study after initial calibration:

$$r_c(\zeta) = \sqrt{r_{c0}^2 + 4\alpha\delta\nu\zeta} \quad (2)$$

where r_{c0} is the initial core radius, set to 5% of the local chord length in this study, α is a constant equal to 1.25643, ν is the kinematic viscosity and ζ is the time since the vortex is shed. LLFVW models are widely acknowledged as an improvement
 185 over BEM theory. Although they come with an increased computational burden, they are able to intrinsically model effects such as skewed, dynamic nonuniform inflow and root and tip losses without the need for additional empiric corrections.

Actuator line model - The concept of an ALM for wind turbines was first proposed by (Sørensen and Shen, 2002), and allows the wind turbine wake to be resolved using Navier–Stokes equations (i.e., computational fluid dynamics [CFD]), with limited computational cost with respect to a full CFD solution. The basics of an ALM model can be described as follows: The wind
 190 turbine blades are divided into a series of blade sections, for which 2D characteristics (Cl , Cd) are determined, as is the case for other “lifting-line” based approaches such as those described in the previous paragraphs. For each blade section, the relative velocity W is determined by combining the velocity that is sampled from the CFD domain and the structural velocity as $\vec{W} = \vec{U}_{CFD} + \vec{U}_{ST}$. This process is commonly referred to as velocity sampling. In this work, the ALM code developed by coupling
 OpenFAST to the CFD solver CONVERGE (Richards et al., 2023), CALMA (Converge Actuator Line Model for
 195 Aeroelasticity) (Pagamonci et al., 2023) is used. In this code, velocity sampling is handled through the line-average velocity sampling algorithm proposed by (Jost et al., 2018). Once the blade forces are computed, they are inserted into the CFD domain as body forces through the force projection procedure. In this work, a piecewise function is used to smear the forces into the domain, as proposed by (Xie, 2021). The kernel size is a trade-off between numerical stability and accuracy; a kernel size equal to 1/4 the chord length is used in the inner 60% of the blade, while in the outer part of the blade, where chord size is
 200 smaller, kernel size is limited by the cell dimension to be 4 times the local cell size. The computational domain is shown in Fig. 2 and matches the dimensions of the Politecnico di Milano (PoliMi) wind tunnel as closely as possible. On the wind tunnel walls, a slip condition is imposed to avoid resolving the wall boundary layer. To account for the latter, the walls are moved inward by a distance equal to the boundary layer height, as estimated during preliminary experimental calibration (Bernini et al., 2018). The grid is Cartesian with successive levels of refinement close to the rotor. The base grid size is 0.25 m; in proximity
 205 of the rotor the grid size is $0.25 * 2^{-4} = 0.015625$ m. In the wake, cell size is $0.25 * 2^{-3} = 0.03125$ m, and automatic mesh refinement is used to increase cell size where needed. This approach has been shown to work well and was calibrated with respect to experiments, as in the results presented by (Bergua and et. al., 2023); it is able to resolve the tip vortex trajectory with accuracy similar to that of comparable numerical techniques (Cioni et al., 2023).

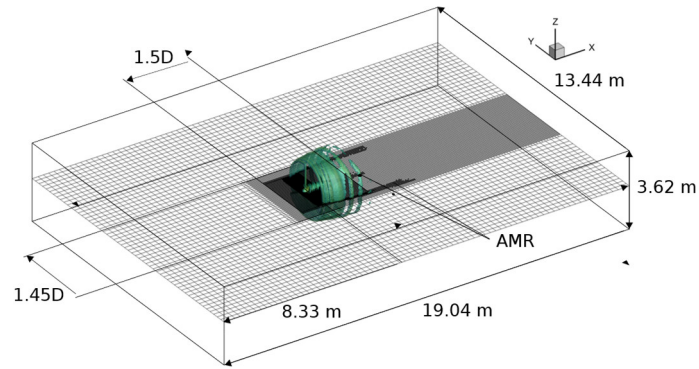


Figure 2: ALM model setup.

210

2.2 Test case

The UNAFLOW rotor is an approximately 2.4 m diameter rotor developed by PoliMi during the LifeS50+ project and later used in the UNAFLOW test campaign (Bernini et al., 2018) shown in Fig. 3. The rotor is a 1:75 scale version of the DTU 10 MW rotor (Bak et al., 2013). The blade was redesigned to match the aerodynamic characteristics of the full-scale rotor as closely as possible, with focus on matching thrust coefficients, as explained in detail in (Bayati et al., 2017b, 2016).

215

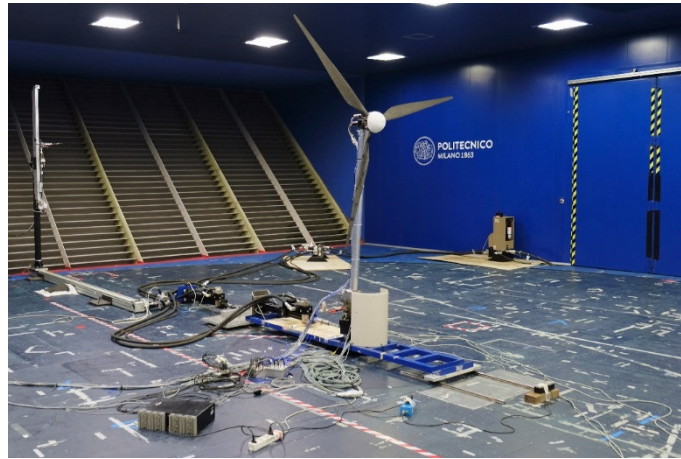


Figure 3: UNAFLOW Rotor during tests in the wind tunnel. Image courtesy of Politecnico di Milano.

The rotor diameter is geometrically scaled, but a low-Reynolds airfoil was used along the entire blade span and, crucially for this study, the local chord-to-rotor-diameter ratio was increased along most of the blade span. The wind speed imposed in the wind tunnel tests is 1/3 the full-scale wind speed. During the UNAFLOW test campaign, various oscillatory surge and pitch tests of the rotor were conducted. The amplitude of the test article's oscillations are scaled geometrically, while the frequency at model scaled is obtained by imposing a constant reduced frequency, defined by (Bayati et al., 2017a) as $f_r = \frac{fD}{U}$. Results are summarized in the work of Mancini et al. (2020) and Fontanella et al. (2021) (Fontanella et al., 2021; Mancini et al., 2020). The outcomes of the experiments were later made available to the participants of the International Energy Agency Wind

220

225 Technology Collaboration Programme (IEA Wind) Task 30 (OC6 Phase III), and used for code-to-code comparisons and
validation (Bergua and et. al., 2023). In this work, the data made available to the IEA Wind Task 30 (OC6 Phase III)
participants are used as a basis to check the soundness of the numerical results with respect to the experimental baseline. We
then build on these test cases and perform forced surge and pitch simulations at frequencies and amplitudes that go beyond
230 model predictions near rotor cut-in wind speed. The load cases (LCs) that are included in this study are summarized in Tables
1 and 2. For each LC, the combinations of frequency, amplitude, wind speed, and rotor speed are shown. In addition, the
reduced frequency and full-scale amplitudes and frequencies of the tests are highlighted. To put the tests into context, utility-
scale FOWTs (10MW and above), when mounted on a spar or semi-submersible platform feature natural frequencies in pitch
that are approximately in the range of 0.005-0.05 Hz. Wave excitation range is typically in the range of 0.05-5 Hz, with 0.08-
235 0.2 Hz being most common. Tension Leg Platforms (TLPs), on the other hand, usually feature higher natural frequencies in
pitch, roll and heave, approximately in the 0.5 to 5 Hz range, although amplitudes are typically small.

240 **Table 1: Surge Load Cases (LCs) discussed in this study. Bold text signifies LCs for which experimental measurements are available. Italic text signifies LCs used in OC6 Phase III (Bergua and et. al., 2023). The operating point corresponds to optimum TSR of 7.5 of the full-scale rotor (DTU 10MW RWT).**

LC	<i>2.1</i>	<i>2.5</i>	<i>2.7</i>	2.20	2.21	2.28	2.29	2.31	<i>2.12</i>	<i>2.16</i>	<i>2.17</i>
f [Hz]	<i>0.125</i>	<i>1</i>	<i>2</i>	3	4	8	12	16	<i>2</i>	<i>2</i>	<i>2</i>
A [m]	<i>0.125</i>	<i>0.035</i>	<i>0.008</i>	0.008	0.008	0.008	0.008	0.008	<i>0.08</i>	<i>0.08</i>	<i>0.08</i>
U_∞ [m/s]	<i>4.19</i>	<i>4.19</i>	<i>4.19</i>	4.19	4.19	4.19	4.19	4.19	<i>4.19</i>	<i>4.19</i>	<i>4.19</i>
f_r [Hz]	<i>0.071</i>	<i>0.568</i>	<i>1.137</i>	1.705	2.273	4.547	6.820	7.957	<i>1.137</i>	<i>1.137</i>	<i>1.137</i>
rpm	<i>240</i>	<i>240</i>	<i>240</i>	240	240	240	240	240	<i>240</i>	<i>240</i>	<i>240</i>
$\Delta\text{rpm}/\Delta\theta$	-	-	-	-	-	-	-	-	-	± 34 rpm	$\pm 1.5^\circ$
f_{fs} [Hz]	<i>0.005</i>	<i>0.04</i>	<i>0.08</i>	0.12	0.16	0.32	0.48	0.64	<i>0.08</i>	<i>0.08</i>	<i>0.08</i>
A_{fs} [m]	<i>9.375</i>	<i>2.625</i>	<i>0.6</i>	0.6	0.6	0.6	0.6	0.6	<i>6</i>	<i>6</i>	<i>6</i>
V_{\max} [m/s]	<i>0.098</i>	<i>0.220</i>	<i>0.101</i>	0.151	0.201	0.402	0.603	0.804	<i>1.01</i>	<i>1.01</i>	<i>1.01</i>

Table 2: Pitch Load Cases (LCs) discussed in this study.

LC	3.26	3.27
f [Hz]	2.5	2.5
A [m]	2	1
U_∞ [m/s]	1.6667	1.6667
f_r [Hz]	0.187	0.187
rpm	150	150
$\Delta\text{rpm}/\Delta\theta$	-	-
f_{fs} [Hz]	0.1	0.1

A_{fs} [m]	2	1
V_{max} [m/s]	1.452	0.726

3 Results

245 The results section is organized as follows: Aerodynamic force prediction capability of the aerodynamic theories in nominal operating conditions is discussed first. These conditions correspond to the test cases that were evaluated during the OC6 Phase III project (Bergua and et. al., 2023), but additional insight is provided herein. Oscillatory pitch tests at cut-in wind speed, where rotor loading is high, are discussed next. Finally, FOWT wake states are discussed.

3.1 Rated wind speed

250 Rotor thrust normalized by surge amplitude and its phase shift with respect to the surge motion are shown in Fig. 4. Good agreement is noted between the experimental data and the numerical models, and results are in line with those showcased by Bergua et al. during the OC6 Phase III project (Bergua and et. al., 2023). Interestingly, a linear relationship between normalized amplitude and frequency can be noted for all the numerical models up to 4 Hz. This indicates that the oscillation in thrust force is directly proportional to the relative velocity, as demonstrated in the following. Rotor thrust force can be written as:

$$255 \quad F_x = \frac{1}{2} \rho C_t A U^2 \quad (3)$$

Where C_t is the thrust coefficient, A is the rotor area, and U is the incoming air speed. Assuming a small variation in inflow, the corresponding variation in thrust can be written as:

$$\Delta F_x \approx \rho C_t A U \Delta U \quad (4)$$

Equation (4) implicitly assumes $C_t = const.$, which is only valid in proximity of the chosen operating point. Assuming a 260 sinusoidal variation in surge $x = x_0 * \sin(2\pi ft)$, the relative inflow to the rotor can be written as:

$$U = U_\infty + \dot{x} = U_\infty + 2\pi f x_0 * \cos(2\pi ft) \quad (5)$$

Therefore, assuming steady inflow, the amplitude of velocity variation is due to the surge variation only and can be written as:

$$\Delta U = 2\pi f x_0 \quad (6)$$

If Eq. (6) is substituted into Eq. (4) and divided by the oscillation amplitude, the normalized amplitude is found to be 265 proportional to the oscillation frequency:

$$\frac{\Delta F_x}{x_0} \approx 2U_\infty \pi \rho C_t A f \approx Kf \quad (7)$$

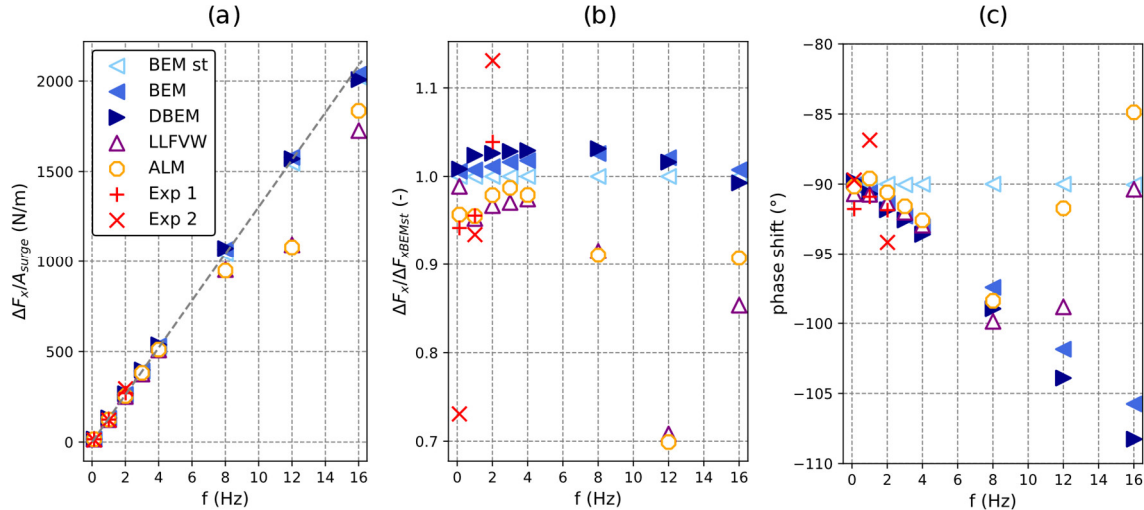
Therefore, a linear relationship between normalized amplitude and surge frequency indicates quasi-steady behaviour. Deviations from such a trend are an indication of nonlinearities in the analysed models. It is important to note that deviations

from the linear trend can be a result of unsteady aerodynamic effects but also a result of other model nonlinearities such as
 270 those present in the lift and drag coefficients. It is also important to keep in mind that the results discussed in the following are
 valid only for the operating condition that is being analysed; since the wind turbine is a nonlinear system, the nonlinearities
 may be more or less evident depending on the specific operating condition. In this context, as shown in Fig. 4, the model
 analysed herein behaves quasi-steadily up to 4 Hz, and all the numerical models, including the simple BEM-based ones, are
 able to correctly predict the thrust variation amplitude. This specific frequency is significant, as it corresponds to an oscillation
 275 with a period of 6 s at full scale, which is at the upper range of a typical wave excitation frequency band. Thus, higher-
 frequency oscillations can hardly be related to linear wave excitation. Although high-frequency oscillation may result from
 tower deformation, these motions are typically small and are not exclusive of FOWTs. Tension-leg platforms could be the
 exception to this, as these platforms are designed with pitch natural frequencies above the wave excitation range that could be
 excited by nonlinear forcing, resulting in pitch motion at high frequencies.

280 On the other hand, the influence of unsteady aerodynamic effects can be seen in the phase shift of the thrust oscillations even
 when the model behaves linearly. In fact, as shown in Eq. (4), in the absence of unsteady effects, thrust oscillations are expected
 to be proportional to oscillations in relative velocity. Therefore, in the case of a harmonic surge excitation, rotor thrust is
 expected to lag behind the surge motion by 90° . The only model that follows the quasi-steady trend is BEM with static polars
 (BEM st). When unsteady blade aerodynamic effects are included (dynamic polars), the thrust force phase shift is smaller than
 285 -90° and thus lags behind the relative velocity, as also noted by (Mancini et al., 2020) and (Bergua et al., 2023). This behaviour
 can be noted in the BEM and DBEM model trends in Fig. 4(c) and is also highlighted in the LLFVW and ALM models, despite
 them using static lift and drag tables. In fact, the phase lag is a consequence of the unsteady vorticity shed from the blade, as
 first explained by Theodorsen (Leishman, 2016), an effect that both the LLFVW and ALM models are able to explicitly
 resolve.

290 Returning focus to the normalized thrust force in Fig. 4(a), at 8 Hz, 12 Hz, and 16 Hz, the LLFVW and ALM models deviate
 from the linear trend, differently from the BEM-based models, which continue to behave quasi-steadily despite the inclusion
 of unsteady blade aerodynamics in the BEM model and dynamic inflow models in the DBEM model. These results are
 consistent with those of Ribeiro et al. (Ribeiro et al., 2022, 2023), who found a similar trend in surge simulation of the
 UNAFLOW rotor using a panel code. These results show how blade-element-based codes, if coupled to a higher-order wake
 295 theory, are also able to capture this effect. (Ribeiro et al., 2022) attribute the nonlinear ΔF_x variations to Theodorsen unsteady
 attached-flow effects. More recently, in a WESC 2023 presentation (Schulz, 2023), Schulz attributed the dip in $\Delta F_x/A_{surge}$
 that can be seen at 12 Hz to the returning wake effect, an aerodynamic phenomenon first noted by Loewy (Leishman, 2016).
 This effect is an extension to Theodorsen's theory that typically manifests in rotors and consist in nonlinear variations in
 aerodynamic forces on a plunging blade due to interaction with the vorticity shed, not only by the blade in examination, but
 300 also by the other rotor blades and the returning wake of the blade itself. In the current test case, this effect is most noticeable
 when the surge frequency is 12 Hz, as this corresponds to 3 times the revolution frequency, i.e., $f_{surge} = n_{bld} * f_{rot}$, where
 the effects of the shed vorticity from the three rotor blades are in sync (Leishman, 2016). In fact, when increasing the oscillation

frequency even further to 16 Hz, the ALM and LLFVW models continue to deviate from the linear frequency-normalized amplitude trend (Fig. 14(a)), although to a lesser extent in relative terms (Fig. 14(b)). BEM models, on the other hand, are
 305 unable to capture the returning wake effect, as they do not include the mutual interaction of shed vorticity from other rotor blades, and do not show the dip in $\Delta F_x/\Delta A_s$ that the higher-order models manifest. These unsteady effects may be larger in a scaled-model test case, as they grow larger as airfoil reduced frequency ($f_{ra} = \pi f * c/U_{rel}$) grows larger, and chord lengths are typically increased in scaled models to increase rotor thrust at low Reynolds numbers.

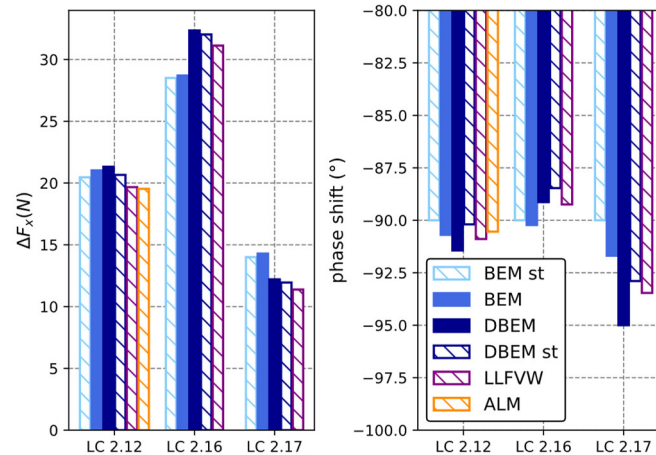


310 **Figure 4: Normalized rotor thrust as a function of surge oscillation frequency during tests with harmonic rotor surge motion. (a) Thrust amplitude normalized by surge amplitude, (b) thrust amplitude normalized by quasi-steady model predictions (BEM st), and (c) phase shift of predicted rotor thrust with respect to surge motion. Filled indicators for models with dynamic polars, blank indicators for models with static polars.**

It is also important to note that dynamic effects may be more important in the case of larger rotors. This may be due to several
 315 factors. Firstly, as explained in Sect. 2.2, the model tests presented herein are scaled based on reduced frequency (Bayati et al., 2017a), which depends on rotor diameter, disproportionately affecting larger rotors. Therefore, assuming that reduced-frequency scaling is relevant for aerodynamic unsteady effects, these may occur at lower full-scale frequencies on larger rotors, such as on 15+ MW turbines. This is compounded in the context of returning wake effects, as larger rotors also feature lower rotational speeds. Finally, some platform concepts, such as tension-leg platforms, typically feature pitch natural frequencies in
 320 the 0.2–0.25 Hz range (Matha, 2009), above ordinary wave excitation. Phenomena such as nonlinear wave forcing or 3P aerodynamic forcing could excite these resonance modes and induce oscillations and unsteady aerodynamic effects. Further research is needed to fully understand the implications of these phenomena.

At lower oscillation frequencies, differences in the aerodynamic forces predicted by the different wake models can be seen if
 harmonic oscillations in blade pitch and rotor speed are introduced with the surge oscillation. Results from 2 Hz frequency
 325 tests are shown in Fig. 5. When an oscillation in rotor speed is introduced (LC 2.16), wake dynamics cause an increase in the aerodynamic thrust amplitude, while when a blade pitch oscillation is introduced (LC 2.17), aerodynamic thrust amplitude is

lower for the LLFVW and DBEM models. On the other hand, very little differences in rotor thrust amplitude are noted in LC 2.12, where the same thrust oscillation as LCs 2.16 and 2.17 is imposed, but no blade pitch or rotor speed oscillation is present. The different behaviour of the numerical models in LC 2.12, where no dynamic inflow effects are apparent in the thrust force amplitude with respect to LCs 2.16 and 2.17, is hard to explain given that axial induction along the blade span, a metric directly related to the “intensity” of the wake, varies to a similar degree in all three test cases (Fig. 6). Moreover, Fig. 6 highlights how in absolute terms, axial induction reaches higher values in LC 2.12. In this load case, axial induction is greater than the threshold of 0.4 in the outer 15% of the blade, where momentum theory is invalid and specific high-induction corrections are applied to BEM-based solutions in AeroDyn. Moreover, while these results are in line with results from participants of the OC6 Phase III numerical experiment (Bergua and et. al., 2023), the lower amplitude of the thrust force predicted by the dynamic models compared to the quasi-steady approaches in the case of a blade pitch oscillation appears counterintuitive because overshoots or undershoots in rotor forces with respect to quasi-steady wake theories are noted in the case of blade pitch step tests (Øye, 1991).



340 **Figure 5: Amplitude and phase shift of rotor force under 2 Hz harmonic surge motion (LC 2.12), harmonic surge motion and rotor speed variation (LC 2.16), and harmonic surge motion and blade pitch variation (LC 2.17). Filled bars represent models with dynamic polars, banded bars represent models with static polars.**

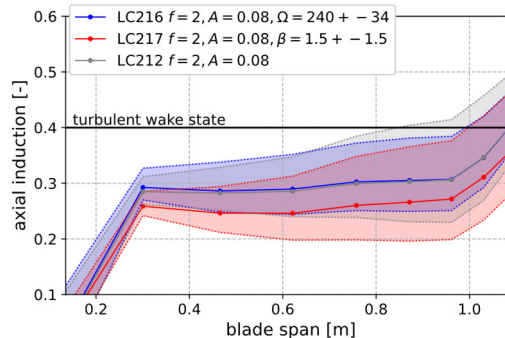


Figure 6: Mean (lines) and variation range (shaded areas) of axial induction as a function of blade span for Blade 1 for the LLFVW model. Axial induction is computed through Eq. (15) during postprocessing.

However, wake dynamics in the case of oscillatory tests such as those shown in LCs 2.12, 2.16, and 2.17 are arguably different from those occurring during a step test. To illustrate this, step tests in surge velocity, blade pitch, and rotor speed for the UNAFLOW rotor are shown in Figs. 7 and 8. In a step test, a rapid, “step-like” change in operating conditions is imposed. Step-tests are often used to evaluate the dynamic response of a rotor to a sudden change in operating conditions. In the step tests performed in this study, the rotor is operating at rated conditions, with a wind speed of 4.19 m/s. The magnitude of the blade pitch, rotor speed, and surge velocity steps are the same as the amplitude of the oscillations imposed in LCs 2.12, 2.16, and 2.17. Therefore, the magnitude of the step changes is 2 m/s for surge velocity (as in LCs 2.12, 2.16 and 2.17), 3° for blade pitch (as in LC 2.17), and 72 rpm step for rotor speed (as in LC 2.16). The duration of the steps is 0.2 s, which corresponds to half a cycle in the case of the LCs analysed in Fig 5.

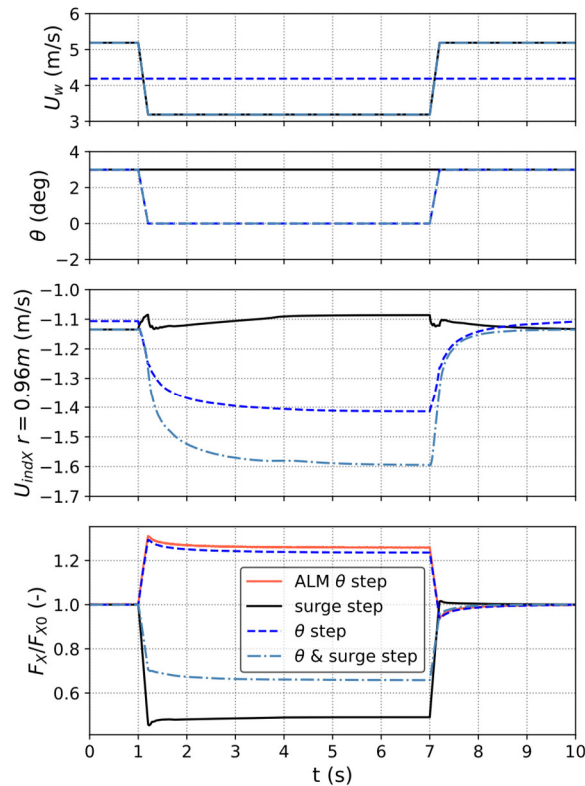


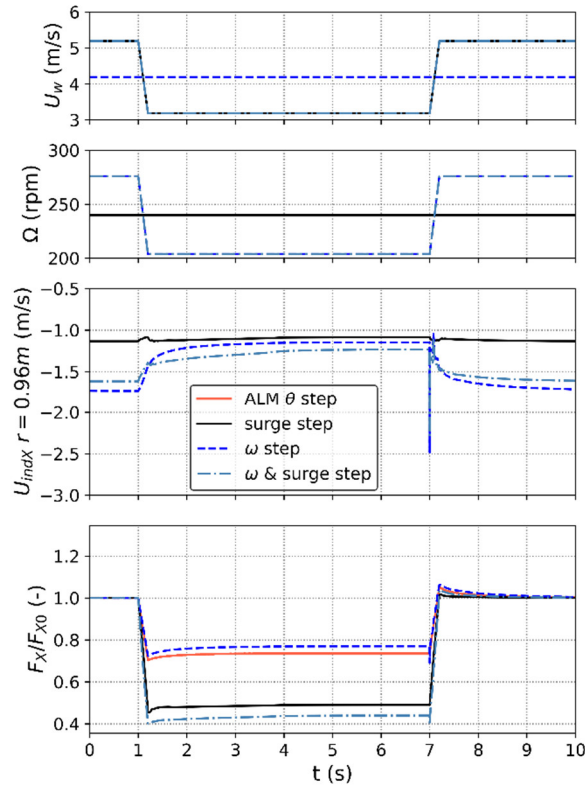
Figure 7: Blade pitch and rotor surge step tests computed using LLFVW. Top to bottom: wind speed, blade pitch, axial-induced velocity at 88% blade span, and thrust force normalized by starting rotor thrust.

As shown in Fig. 7, in the case of a simple surge velocity step, there is very little aerodynamic load under/overshoot. This phenomenon was also noted by other authors (Schepers, 2022; Corniglion et al., 2022), who found little variations in induced velocity despite significant variations in axial induction. In particular, (Corniglion et al., 2022) ran similar analyses on the

UNAFLOW rotor and attributed the lack of dynamic load over/undershoot to the fact that the step change in surge velocity causes the blade tip vortex spacing in the near wake to vary, partially compensating for the induction change along the blade. The magnitude of this cancellation effect depends on the rotor design and on the operating point under consideration. The dynamic inflow effect, as noted and described by (Snel and Schepers, 1995), can be noted in the case of a blade pitch step, with rotor thrust taking up to 2 s to reach a steady-state value. A step change in rotor speed is simulated also with the ALM model, and the resulting change in rotor thrust is shown in red in Figs. 7 and 8. In both cases, ALM, which is able to solve the real physics and inertia of the wake through Navier-Stokes equations, predicts slightly higher thrust variations and slightly lower thrust overshoot than LLFVW. Rotor thrust, however, takes a similar time to reach a steady-state value. Therefore, the LLFVW model is considered accurate for the intended purpose of this specific analysis, which is to observe the time-scales of the rotor aerodynamic response and to understand the underlying phenomena involved. Interestingly, this effect is also present when concurrent blade pitch and surge velocity steps are introduced.

Similar considerations can be drawn in the case of a rotor speed step test: dynamic load over/undershoot can be observed in the case of a rotor speed step and can be noted also when rotor speed and surge velocity steps are combined, despite this dynamic effect being present to a much smaller extent in the case of a surge velocity step. It must be noted that step-like changes in rotor speed are arguably getting less likely as turbine sizes increase and increases in rotor inertia outweigh those in aerodynamic torque. Nonetheless, such a case is considered in this study from a conceptual point of view to evaluate the effects on aerodynamic forces of changes in rotor speed and platform surge combined.

Induced velocity time series in the outer part of the blade are also shown in Figs. 7 and 8. In line with previous scientific literature, during both rotor speed and blade pitch steps, variations in induced velocity are much greater than those recorded during a surge velocity step. This consideration holds true for the outer 50% of the blade, which generates the majority of the axial loading in the selected operating conditions. These results are not shown here for brevity and to avoid overlap with the work of (Corniglion et al., 2022), to which the reader is referred for further considerations.



385 **Figure 8: Rotor speed and rotor surge step tests computed using LLFVW. Top to bottom: wind speed, rotor speed, axial-induced velocity at 88% blade span, and thrust force normalized by starting rotor thrust.**

The timescales of the dynamic wake effect for this rotor at rated operating conditions can also be deduced from the data shown in Figs. 7 and 8, as thrust force requires 1–2 s to reach its steady-state value. In the case of the oscillatory load cases examined in this study, an entire cycle lasts 0.5 s. Therefore, while wake physics remain the same, we argue that a different dynamic effect is being observed herein, and that a straightforward load overshoot when dynamic inflow effects are accounted for cannot be expected. In this context, the fact that the simple dynamic wake model integrated in the tested DBEM model is able to improve agreement in the prediction of aerodynamic force amplitude for an oscillatory test is a good indication that the model is able to capture the general physics of the dynamic wake problem at hand. This is indeed very different from a step test in rotor speed or blade pitch for which such dynamic wake models were developed and tuned.

390 For more insight on how dynamic wake effects influence aerodynamic forces, the spanwise amplitude and phase shifts of axial-induced velocity and relative axial velocity recorded during LCs 2.12, 2.16 and 2.17 are shown in Fig. 9. Focus is placed on these parameters, as they strongly influence thrust force variations. In fact, the spanwise thrust force per unit span of each blade can be written according to blade element theory as:

$$F_x = \frac{1}{2} \rho c C_{ax}(\alpha, \vartheta, \varphi) U_{rel}^2 \quad (8)$$

400 where α is the local angle of attack $\alpha = \tan^{-1}\left(\frac{U_{relY}}{U_{relX}}\right)$, ϑ is the blade pitch angle, φ is the local twist angle, and C_{ax} is the axial force coefficient. The relative velocity can be decomposed into axial and tangential components, as radial components do not generate aerodynamic loading in blade-element-based models:

$$U_{rel}^2 = U_{relX}^2 + U_{relY}^2 \quad (9)$$

The axial and tangential velocity components can be written as the sum of incoming wind speed, the induced velocity, and the structural velocity (Eq. 10):

$$U_{relX,Y} = U_{\infty X,Y} + U_{indX,Y} - U_{stX,Y} \quad (10)$$

410 Considering that the structural velocity is the same for all the compared wake models, as the tower and blades are rigid in the numerical models, that the wind speed is aligned with the rotor ($U_{\infty Y} = 0$), and in the hypothesis that tangential induced velocity is small ($U_{indY} \cong 0$), U_{relY} can be considered to be independent from the wake model, and focus can be put on axial relative velocity U_{relX} only, which directly influences aerodynamic thrust (Eq. (8)).

In Fig. 9, the spanwise amplitude and phase shift with respect to the imposed surge motion of the relative blade axial velocity are shown on the bottom two rows. In the top rows, the phase shift with respect to the imposed surge motion and variation amplitude as a function of blade span of the induced velocity is shown. The columns correspond to LCs 2.12, 2.16, and 2.17. If the spanwise amplitudes of induced velocity variation for the three load cases are compared to each other in Fig. 9(b), (f), 415 and (l), similar ΔU_{indX} can be noted for all three LCs. This indicates that the different model behaviour observed in the three LCs – i.e., lack of differences between dynamic wake models and quasi-steady ones in LC 2.12, but different thrust force amplitudes for models with and without dynamic wake in LC 2.16 and 2.17 – are not caused by lower variation in U_{indX} , as is the case for step tests (Figs. 7 and 8). Focusing on LC 2.12 with respect to the BEM model, which does not include wake dynamics, the DBEM, LLFVW, and ALM models show significant differences in relative velocity. All three models predict 420 lower relative velocity oscillations in the outer span of the blade but higher oscillations in the inner part, leading to the differences between them cancelling out when the global rotor thrust is considered. Given that the structural windward velocity and the wind speed are the same for all the blade stations and all numerical models, as surge motion is being analysed, this phenomenon is a result of differences in induced velocity. In this regard, the induced velocity amplitude along the blade span is lower on the entire blade for the models that include dynamic induction. This is consistent in all three LCs analysed in Fig. 425 9. The lower variations in induced velocity lead to higher or lower relative velocity amplitudes, depending on how the former combine with oscillations in structural velocity (Eq. (10)). To this end, it is useful to focus on the phase shift of the induced velocity (Fig. 9 (a), (e), (i)). Focusing on BEM results, which do not include phase lags and are thus easier to interpret, the phase shift of the induced velocity shifts from -90° in the outer part of the blade to $+90^\circ$ in the inner part of the blade. On the other hand, the structural velocity lags behind surge motion and is thus shifted -90° for all blade stations.

430

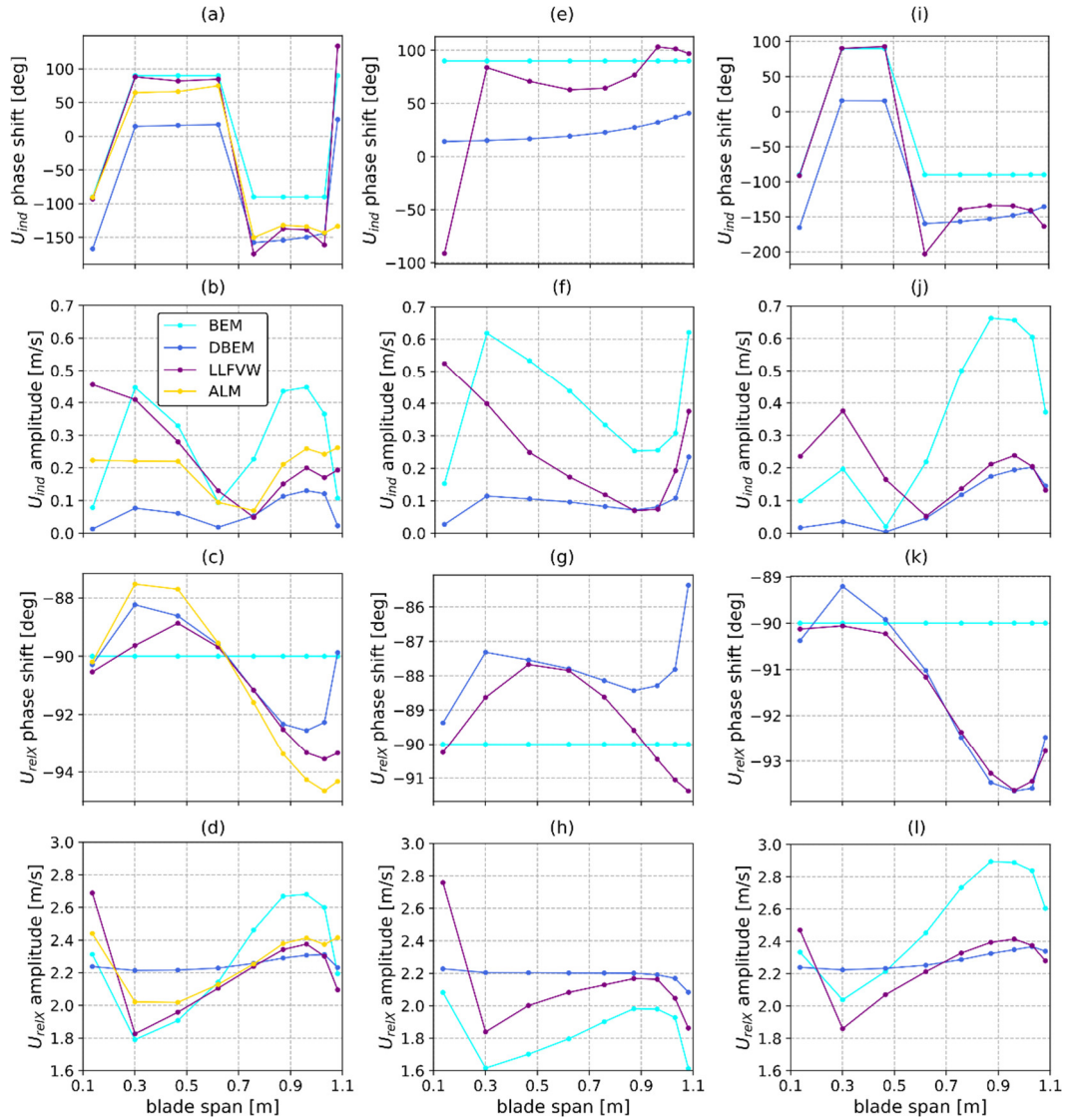


Figure 9: Phase shift (top) and amplitude (middle) of induced velocity and amplitude of relative velocity (bottom). (a–d) LC 2.12, (e–h) LC 2.16 – harmonic rotor speed variation, and (i–l) LC 2.17 – harmonic blade pitch variation.

Therefore, if induced velocity and structural velocity variations are in phase, their combination increases the variation in axial
 435 velocity, whereas if the phase shift of the induced velocity is $+90^\circ$, the two signals are in phase opposition, and thus their
 combination leads to lower relative velocity. Therefore, in the case of LC 2.12, this phenomenon has the effect of augmenting
 the velocity oscillations in the outer part of the blade and diminishing them in the inner part. Despite the models that include
 wake dynamics having different phase shifts, this reasoning can be applied to the latter models as well. Therefore, because the
 models that account for dynamic induction have lower induced velocity amplitudes, they show lower variations in induced
 440 velocity in the outer part of the blade and higher ones in the inner part with respect to BEM. The way structural and induced
 velocity variations combine is also the reason differences between the numerical models emerge in LC 2.16 (Fig. 9(e–h)) and

2.17 (Fig. 9(i-l)). Similar to LC 2.12, the wake dynamics act like a filter and reduce the amplitude of the induced velocity variations along the span. In LC 2.16, because the phase shift of U_{indX} is positive, more variation in relative velocity for DBEM and LLFVW can be noted. On the other hand, because the U_{indX} phase shift is negative along most of the blade span in LC
445 2.17 (Fig. 8(i)), variations in induced velocity are in phase with the structural velocity, leading to less induced velocity variation and less aerodynamic thrust variation in DBEM and LLFVW.

Finally, it is interesting to investigate why the U_{indX} phase shift may assume positive or negative values depending on the spanwise location and test case. These can be explained by considering the induced velocity as:

$$U_{indX} = (U_{\infty} - U_{strX}) * a \quad (11)$$

450 Where a is the induction factor for each radial station. In the case of more advanced theories such as LLFVW and ALM, where a is not computed through a momentum balance, this factor is used to summarize the effect of the wake on each radial station. It is clear from Eq. (11) that variations in U_{indX} are a result of the combined variations of U_{strX} and a . For the UNAFLOW rotor, the two quantities combine in different ways along the span, leading to the observed behaviour in LC 2.12. In summary, dynamic wake effects act like a filter on the induced velocity and reduce its variation in all three LCs, 2.12, 2.16, and 2.17. In
455 the case of simple surge motion (LC 2.12), no dynamic inflow effects on the loads are observed because this effect leads to higher load amplitudes in the outer part of the blade that are compensated by lower amplitudes in the inner part.

3.2 Cut-in wind speed

BEM-based models need to perform reliably in even more challenging conditions than those examined in Sect. 3.1, despite tests carried out in this section highlighting some differences between the aerodynamic theories. In fact, as discussed in Sect.
460 2, BEM models are challenged when rotor loading is high and specific high-induction empirical corrections need to be employed. In this view, rotor loading generated from the combination of surge oscillation and inflow conditions tested in Sect. 3.1 do not push BEM models to their limit (Fig. 6). On the other hand, at lower wind speeds, modern wind turbine rotors are typically highly loaded, thus motivating the examination of these conditions. Moreover, we argue that rotor-wake interaction is most likely in these operating conditions for a floating rotor. In fact, interaction of the rotor with its own wake, as in the
465 rotor blades moving in and out of their own wake, is most likely when:

1. Downstream wake convection velocity is low. This can be achieved through a combination of low incoming wind speed and high rotor loading, which leads to high axial induction and thus lower velocity downstream of the rotor plane.
2. Fore-aft rotor velocity of the blade elements is high. In the case of harmonic oscillatory tests such as the ones
470 performed herein, this can be achieved through a combination of high amplitude and high frequency of the oscillations.

Based on these considerations, two additional LCs are evaluated, namely LC 3.26 and 3.27, as shown in Table 2. In these LCs, the turbine is operating at a full-scale wind speed of 5 m/s, close to the cut-in wind speed. In these inflow conditions, many

variable-speed rotors, including the DTU 10 MW upon which the UNAFLOW rotor is based, operate at minimum rotor speed
 475 (to avoid tower resonance) and are forced to run at a high tip-speed ratio. This leads to high rotor loading, which when
 combined with the low incoming wind speed meets the criteria highlighted in point (1). The tests are performed with a forced
 floater pitch oscillation of 1° and 2° at a full-scale equivalent frequency of 0.1 Hz, which is commonly in the wave excitation
 range. A floater pitch oscillation is favoured over a surge oscillation, as the former can leverage the full turbine height, inducing
 larger fore-aft oscillations in the upper part of the rotor. As shown in the following sections, these conditions indeed lead to
 480 rotor-wake interaction on the selected test case. These imposed oscillations on the model-scale test case treated herein can be
 put into context and compared to wave conditions that would lead to similar fore-aft velocities on full-scale research FOWTs.
 The maximum blade tip fore-aft velocity induced by a pitch oscillation, when the blade is pointing upwards, can be written as:

$$V_{tip} = 2\pi f A(l_{twr} + l_{blid}) \quad (12)$$

Where l_{twr} and l_{blid} are the tower and blade lengths, A and f are the amplitude and frequency of the harmonic oscillation. The
 485 centre of rotation is assumed to correspond, as a first approximation, with the centre of floatation of the system. Although the
 position of the centre of rotation is influenced by many factors, such as external forcing and the position of the centre of gravity
 and centre of buoyancy, this decision is supported by recent research (Patryniak et al., 2023), indicating a strong alignment
 between the centre of rotation and the centre of floatation, particularly evident under higher wave excitation frequencies. By
 inverting Eq. (12), the required oscillation amplitude to reach an equivalent V_{tip} can be expressed as:

$$A(f) = V_{tip}/2\pi f(l_{twr} + l_{blid}) \quad (13)$$

Finally, the height of a regular wave required to reach an oscillation with amplitude $A(f)$ can be expressed as:

$$H_w(f) = \frac{2A(f)}{RAO(f)} \quad (14)$$

Since response amplitude operators (RAOs) typically relate two-sided wave heights to two-sided oscillation amplitudes, the
 required amplitude is doubled. The resulting wave heights derived for common research turbines are shown in Fig. 10 for pitch
 495 oscillations (a) and surge oscillations (b), in which case Eq. (12) is replaced by $V_{tip} = 2\pi f A$. RAOs are extracted from the
 plots in ((Ramachandran et al., 2013) for the NREL 5 MW OC3 model, and from (Papi and Bianchini, 2022) for the NREL 5
 MW OC4 and IEA 15 MW models.

Table 3: Dimensional characteristics of floating reference turbines.

Turbine	NREL 5 MW OC4	NREL 5 MW OC3	IEA 15 MW Semi
blade length [m]	63	63	120
tower height [m]	90	90	150
CoG below SWL [m]	-13.5	-89.9	-14.94

500

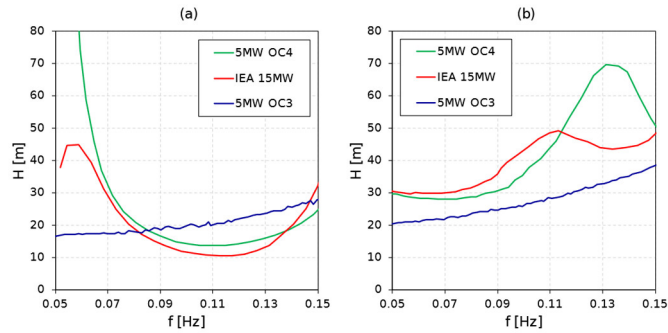


Figure 10: Required two-sided wave height for blade tip velocity to reach value reached in LC 3.26 (4.357 m/s at full scale) through (a) pitch motion and (b) surge motion.

When Fig. 10(a) and (b) are compared, as expected, much higher wave heights are required to reach the specified fore-aft
 505 velocity in the case of surge motion. Focusing on pitch motion (Fig. 10(a)), wave heights of approximately 10 to 13 m are
 required between 0.09 and 0.13 Hz to reach a rotor apex fore-aft velocity equivalent to LC 3.26 at full scale. Such large waves
 in low wind speed conditions are uncommon, but not unrealistic. For example, recent studies have suggested that extreme 50-
 year wave heights of approximately 8.5 m are possible at 5-m/s wind speed in a site with severe met-ocean conditions, as
 demonstrated by the environmental contours shown in (Papi et al., 2022). Nonetheless, LC 3.26 is considered as an extreme
 510 case in this study. If we consider LC 3.27, where oscillation amplitude is halved, half the wave height is required due to the
 linear nature of RAOs.

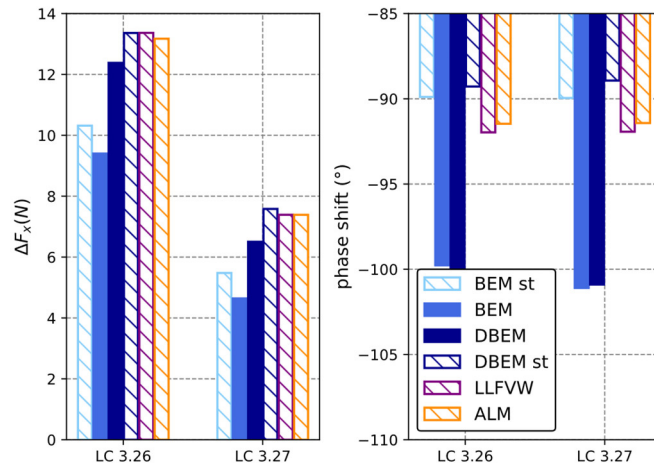


Figure 11: Amplitude and phase shift of thrust force at cut-in wind conditions. Filled bars represent models with dynamic polars, banded bars represent models with static polars.

515 The predicted amplitude and phase shift of rotor thrust in these conditions (LCs 3.26 and 3.27) is shown in Fig. 11. The thrust
 force oscillations are again summarized by reporting oscillation amplitude and phase shift values, as the imposed oscillations
 cause variations in aerodynamic forces mostly at the oscillation frequency itself. Significant underprediction of thrust force

oscillation can be noted for the BEM model. On the other hand, DBEM, LLFVW, and ALM are all very close in magnitude, indicating that, once again, a medium-fidelity aerodynamic theory such as LLFVW is very close to a high-fidelity wake model such as ALM in the prediction of rotor forces, and that the dynamic inflow model implemented in DBEM performs well in the prediction of global rotor loads in these conditions. In contrast to LCs 2.12, 2.16, and 2.17 (Fig. 5), significant differences in both amplitude and phase shift can be seen when dynamic polars are used rather than static ones.

To investigate this in more detail, spanwise distributions of axial induction, relative axial velocity, and out-of-plane aerodynamic force per unit length in LC 3.26 are shown in Fig. 12. Spanwise distributions are shown for Blades 1 and 2 because the revolution frequency is synchronized with the oscillation frequency. Therefore, as pitch motion introduces asymmetric axial velocity distributions, spanwise quantities are different on the three blades. On both blades shown in Fig. 12(a) and (b), axial induction exceeds the value of 0.4, where momentum theory is considered invalid. Moreover, axial induction reaches values above unity in the outer 60% blade span for the LLFVW and ALM models on Blade 1 (Fig. 12(b)). In the LLFVW and ALM models, which do not explicitly solve for axial induction, this parameter is computed in a postprocessing phase by rearranging Eq. (1) as:

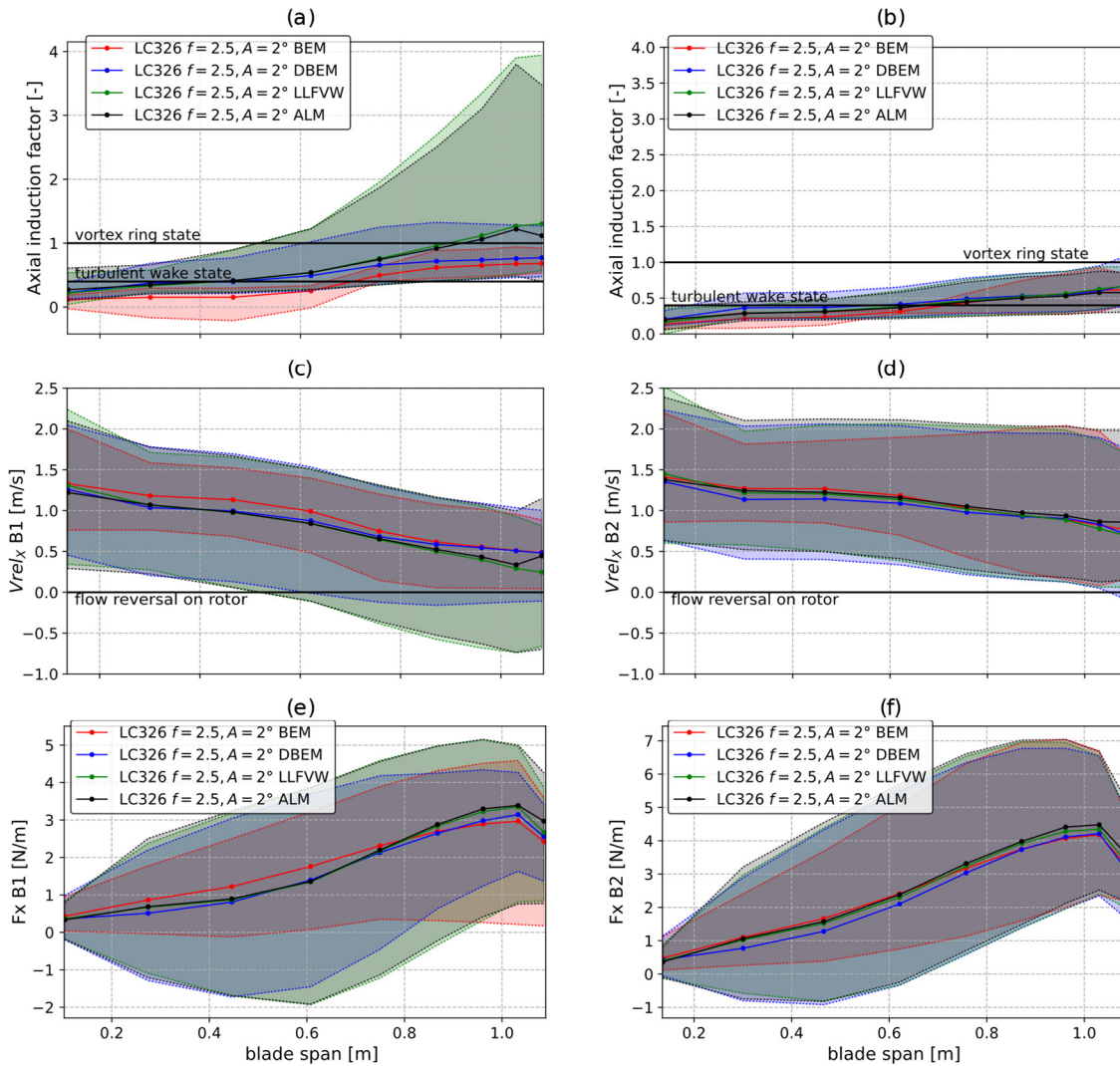
$$a = 1 - \frac{U_{rel}^i}{U_{wind}^i + U_{str}^i} \quad (15)$$

As discussed in Sect. 2, AeroDyn includes structural velocity in the momentum side and in the blade element side of the momentum balance and is consistent with Eq. (15). A direct consequence of this is that induction factors above unity are directly linked to flow reversal on the rotor blades. This can be noted by comparing Fig. 12(a) and (c), where negative inflow on the blades can be seen in the outer 40% of Blade 1 where axial induction is above unity for LLFVW and ALM. Fig. 12(c) also confirms that rotor-wake interaction, as hypothesized in Sect. 3.2, does indeed occur in LC 3.26. However, as shown in Fig. 12(d), no flow reversal occurs on Blade 2. Analogous considerations can be drawn for Blade 3, not shown for brevity. Flow reversal can be noted especially in the LLFVW and ALM models in Fig. 12(c), which also reach the highest axial induction values (Fig. 12(a)). Negative relative inflow near the tip of Blade 1 is also predicted by DBEM, although to a lesser extent (Fig. 12(c)). On the other hand, BEM does not predict flow reversal on the rotor (Fig. 12(c)), and axial induction values always remain below unity (Fig. 12(a)). Spanwise axial force per unit length along Blades 1 and 2 are compared in Fig. 12(e) and (f). Analogous to the relative velocity, DBEM is able to improve the prediction of the variation amplitude of axial force along the span for Blade 2. It also improves predictions with respect to BEM on Blade 1, but only in the inner 60% of the span. Indeed, DBEM's dynamic induction correction brings this model's results more in line with higher-order theories in the inner part of the blade, where induction factors are lower, but fails to do so in the outer part (Fig. 12(b)). Despite this, the combination of aerodynamic force variation on the three blades leads to thrust force oscillations very similar to higher-order theories, as shown in Fig. 11, once more proving the viability of BEM models as an industrial tool. However, the differences noted in the spanwise quantities on Blade 1 in BEM and DBEM compared to higher-order theories (Fig. 12 c,e) indicate limitations. In fact, because AeroDyn treats structural velocities as apparent wind, flow reversal on the rotor is directly related to VRS. As

550 will be shown in the following section (3.3), this assumption is incorrect, and despite flow reversal, we argue that the rotor
does not enter VRS in LC 3.26. However, because VRS is erroneously detected in BEM and DBEM, AeroDyn switches to
using an empirical correction, which is incorrect. Therefore, for scenarios like LC 3.26, the limitations of treating structural
velocities as apparent wind and neglecting additional inertial effects in BEM are apparent, especially when handling reverse
flow situations on the rotor. Moreover, the oscillation frequency in LC 3.26 is high with respect to the flow time constant, and
555 thus, interaction with the induced velocity gradient in the axial direction may also be relevant (de Vaal et al., 2012). Tests
similar to these could help further improve and advance BEM models

~~The influence of wake dynamics is apparent in these test conditions: BEM greatly underestimates the amplitude of relative axial velocity on both blades. The inclusion of dynamic wake effects through Øye's dynamic inflow model greatly improves agreement with higher order theories, falling somewhat short of the latter only in the outer part of Blade 1, where the model appears to be pushed to the limit. Spanwise axial force per unit length along Blades 1 and 2 are compared in Fig. 12(e) and (f). Analogously to the relative velocity, DBEM is able to improve the prediction of the variation amplitude of axial force along the span for Blade 2. It also improves predictions with respect to BEM on Blade 1 but only in the inner 60% of the span. Indeed, DBEM's dynamic induction correction brings this model's results more in line with higher order theories in the inner part of the blade, where induction factors are lower, but fails to do so in the outer part (Fig. 12(b)). Despite this, the combination of aerodynamic force variation on the three blades leads to thrust force oscillations very similar to higher order theories, as shown in Fig. 11, once more proving the viability of BEM models as an industrial tool. However, differences in BEM and DBEM compared to higher order theories (Fig. 12 c,e) indicate limitations. For scenarios like LC 3.26, neglecting inertial effects in BEM or relying solely on Glauert's correction might be insufficient, especially when handling reverse flow situations on the rotor. Moreover, the oscillation frequency in LC 3.26 is high with respect to the flow time constant and thus interaction with the induced velocity gradient in the axial direction may be relevant (de Vaal et al., 2012). Tests similar to these could help further improve and advance BEM models. On the other hand, LLFVW and ALM are again very close in both mean values and variation amplitudes in all the quantities in Fig. 12. In summary, the ability to correctly predict spanwise force variations in the codes is closely linked to a correct prediction of relative inflow velocity and axial induction.~~

560
565
570



575

Figure 12: Mean (lines) and variation range (shaded areas) of axial induction as a function of blade span for (a) Blade 1 and (b) Blade 2; relative axial velocity along blade span for (c) Blade 1 and (d) Blade 2; and axial force per unit length along blade span for (e) Blade 1 and (f) Blade 2. Values computed using LLFVW model.

580 3.3 Wake states

Axial induction values are often linked to the wake state the rotor is operating in. In particular, axial induction values above unity conventionally indicate that the rotor is operating in *vortex ring state* (VRS), while values between 0.4 and 1 are linked to the *turbulent wake state* (TWS). In both cases, momentum theory is invalid, and specific empirical models are typically applied in BEM-based codes. Moreover, many codes use axial induction as a threshold to switch between submodels that have

585 been developed over time to model specific conditions such as TWS or VRS. For instance, this is the case for AeroDyn (Ning et al., 2015) and TNO's code AeroModule (Mancini et al., 2022), despite both codes not explicitly solving for axial induction. We argue that, from a theoretical standpoint, such a direct link between axial induction and wake state can only be assumed in the case of a static rotor operating in steady-state inflow conditions, where the momentum balance is applied in an inertial reference frame. In the case of a floating rotor, the high-induction factors observed in Fig. 12(a) are simply a consequence of
 590 the momentum balance being applied in a non-inertial frame and are due to the unsteady rotor-relative velocities. To demonstrate this point, the axial velocity field in the rotor wake during LC 3.26 shown in Fig. 13 can be observed. The velocity in the rotor reference frame is derived as follows: the structural velocity in the axial direction due to pitch motion can be written as:

$$U_{strx}(t) = V_t(t) \cos(\theta(t) + \phi) \quad (16)$$

595 where ϕ is the geometric angle deriving from the combination of rotor overhang and height above the oscillation point, R is the distance from the oscillation centre, R_z is the height, R_x the rotor overhang, $V_t(t)$ is the rotational velocity due to pitch motion, and $\theta(t)$ is the instantaneous pitch angle:

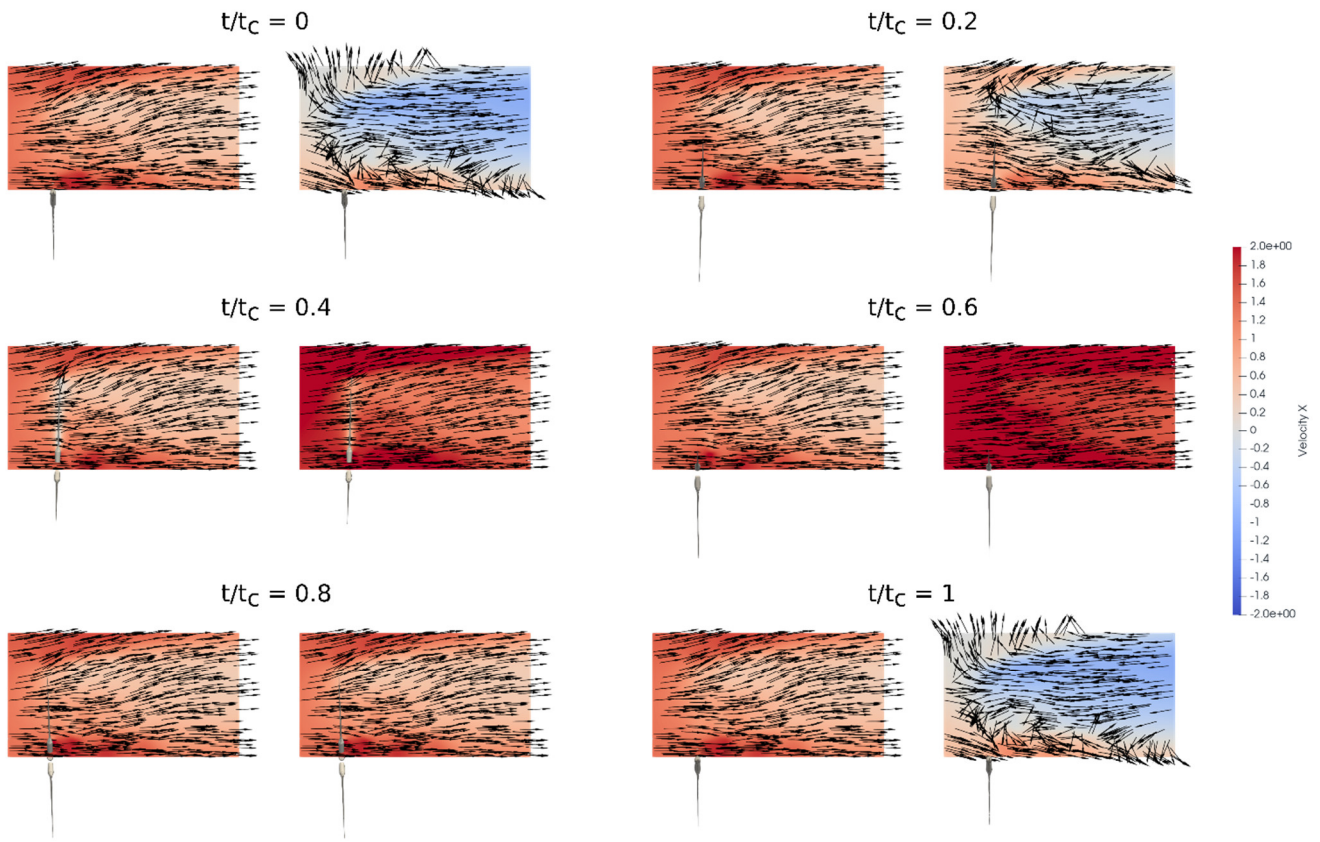
$$\begin{aligned} \phi &= \tan^{-1}\left(\frac{R_x}{R_z}\right) \\ R &= \sqrt{R_x^2 + R_z^2} \end{aligned} \quad (17)$$

600

$$\begin{aligned} V_t(t) &= 2\pi f A \cos(2\pi f t) \\ \theta(t) &= A \sin(2\pi f t) \end{aligned}$$

With the structural velocity defined as in Eq. (16), this component can be subtracted from the velocity field to obtain the axial flow velocity in the rotor reference frame. The result of this operation is shown in Fig. 13 [for LC 3.26](#). For each time instant, the axial velocity in the fixed inertial reference frame is shown on the left, while the axial velocity in the rotor reference frame is shown on the right. Large degrees of flow reversal in the upper part of the flow field can be seen in the relative reference frame. However, in the absolute frame, no such reversal occurs. Significant degrees of wake expansion can be seen, indicating that the turbine is likely operating in TWS, a condition that is compatible with the high mean rotor loading of this operating point. Despite this, in the static reference frame, the wake appears to be in line with typical wind turbine wakes, and flow structures typical of VRS or propeller brake state (PBS) cannot be observed.

610 This is in line with the observations of (Ferreira et al., 2022), who argue that TWS and VRS are a property of the streamtube rather than the rotor. Therefore, the high-induction factors observed in Fig. 12(a), are a consequence of rotor motion leading to localized flow reversal on the rotor rather than an indication of TWS or VRS. [As discussed in section 3.2, this fundamental flaw within the theory causes DBEM not to be able to match the predictions of LLFVW and ALM in the outer part of Blade 1 during LC 3.26 \(Fig. 12 \(a, c, e\)\).](#)



615

Figure 13: Velocity field in the near wake of the UNAFLOW rotor during an oscillation cycle in LC 3.26. Colourmap is relative to axial (X) velocity, vectors indicate in-plane direction of the fluid. Absolute velocity field in inertial reference frame (left) and relative velocity field in rotor reference frame obtained with Eq. (16) (right). Only upper half of mid-wake is shown, as relative inflow variations are largest.

620

Despite this, applying the BEM based model in the rotor reference frame, as if it were in TWS or VRS, yields good results if a dynamic inflow model (DBEM) is included in the analysis, as shown in Fig. 11. However, it falls somewhat short of higher-order models in the prediction of induced velocity oscillations in the outer part of Blade 1, which encounters the most variations in relative inflow (Fig. 12). Moreover, this strategy has also proven to work well in nominal operating conditions at rated wind speed (Figs. 4 and 5). (Boorsma and Caboni, 2020) came to a similar conclusion when comparing lifting line and

625

BEM results of surge oscillation tests of the UNAFLOW rotor: including platform surge motion in the momentum balance as “apparent wind” led to improved agreement with LLFVW. The same was noted by (Mancini et al., 2022) in a subsequent work, although it must be pointed out that, as noted by the authors, applying a momentum balance in the rotor reference frame, or even in unsteady conditions, is theoretically incorrect, and thus such models fully qualify as engineering, empirically derived approaches.

630 ~~In this view, the results of this study confirm that treating structural velocity variations the same way as inflow velocity variations allows for more effective prediction of dynamic aerodynamic loading in BEM based models, especially in cases where variations in structural velocity are smaller compared to the mean relative velocity on the blades, such as LCs 2.12, 2.16, and 2.17 that are shown in Fig. 5.~~

4 Conclusions

635 In this study, a critical analysis on the applicability and accuracy of BEM-based aerodynamic models in complex flow conditions typical of floating wind turbines is proposed. To this end, the aerodynamic forces resulting from forced surge and pitch oscillation tests of the UNAFLOW rotor are used. In an attempt to find the real limits of BEM, we also went beyond the UNAFLOW tests by analysing oscillations with higher frequency and additional load cases in low wind speeds. The amplitude and frequency – 0.1 Hz at full scale – of these additional tests was selected as to be representative of extreme wave-induced
640 oscillations.

Results have shown that in rated wind speed conditions all models are able to capture the amplitude of the thrust force oscillations. In these conditions, there is a linear relation between the normalized amplitude and oscillation frequency. At high-oscillation frequencies, the LLFVW and ALM models stop behaving linearly. This effect is ultimately linked to unsteady airfoil effects, namely Lowry's returning wake problem. BEM and DBEM results are unable to capture this behaviour, despite
645 including unsteady blade aerodynamics, as they do not model returning wake effects. The frequency at which these aerodynamic phenomena are most apparent depends on the specific rotor design. In fact, discrepancy between BEM results and higher-order wake theories is largest when the oscillation frequency is 3 times the revolution frequency – 12 Hz at model scale – but is also apparent at 8 Hz, a 33% reduction with respect to the 3P frequency.

Analysing the results of oscillating tests at 2 Hz with blade pitch and rotor speed oscillations, namely, LCs 2.12, 2.16, and
650 2.17, we have found that DBEM is able to predict thrust force variations that are in line with higher-fidelity models such as LLFVW and ALM. On the other hand, in line with the findings of previous studies (Bergua et al., 2023), simple BEM theory falls short of the other model predictions when blade pitch and rotor speed variations are introduced with the surge oscillations (LC 2.16 and 2.17). In addition, we have shown that the use of a model that can include dynamic inflow effects, either directly through model solution or empirically, lowers the variations in induced velocity in all three LCs. In other words, unsteady
655 wake dynamics (also known as dynamic inflow) effectively act like a filter on induced velocities, diminishing their amplitude even in the case of surge oscillations only. The lack of a difference between BEM and higher-order theories in the case of simple surge oscillations (LC 2.12) is not due to a lack of unsteady aerodynamic effects, but rather by the way variations in induced velocity and structural velocity combine along the blade span, which explains the rotor thrust overshoot noted during rotor speed variations, the undershoot during blade pitch variation, and the substantial equivalency between aerodynamic
660 theories in the case of surge variation only. It is also important to note that the amplitude of the induced velocity variation along the blade span in the three examined load cases is comparable. This differs from what is observed during surge velocity

step tests, where, similar to LC 2.12, no dynamic inflow effects are observed. In this case, however, the absence of such effects is mostly attributed to the small variations in induced velocities that can be observed in the tests, in turn caused by the change in tip vortex spacing partially compensating for the change in axial induction factors.

665 Despite the inability to predict returning wake effects, DBEM is found to perform well at rated wind speed. In these conditions, treating the structural velocity as an apparent wind variation is practically effective, and in line with the existing body of literature.

In lower wind speeds, near cut-in wind speed where rotor loading is high, DBEM is able to predict similar results to LLFVW and ALM as far as global rotor aerodynamic forces are concerned. On the other hand, ~~—and it is only~~ when considering spanwise quantities along the blades ~~that~~ some differences with respect to higher-order theories emerge. ~~From this point of view, treating structural velocities in the momentum balance the same way wind velocities are treated, as is done in this study, seems to be effective. On the other hand, a~~ Applying the momentum balance in the rotor reference frame, as this method implies, means that induction factors can reach very high values during specific transient events. This does not necessarily imply that the rotor enters TWS or VRS, where momentum theory is invalid, as no flow reversal can be seen in the rotor wake despite induction factors exceeding unity. Flow reversal can instead be seen across the rotor plane, as this is due to the rotor structural velocity rather than the induced velocity. Because structural velocities are included in the momentum balance as apparent wind variations, BEM and DBEM cannot distinguish between flow reversal and VRS, and therefore, despite the good prediction of aggregated rotor aerodynamic forces, differences with respect to higher order theories in the prediction of spanwise quantities are apparent. This highlights an area of possible future improvement in BEM-based engineering tools. For instance, the ability of a dynamic wake induction model to model the inertia in the flow of a floating rotor if structural velocity is not considered in the momentum balance, and possible improvements to these models in such a scenario, remains an open question.

In conclusion, dynamic inflow effects are present even in surge tests, despite there being little to no difference in the predicted global aerodynamic thrust variation. Similar to the observations of other authors, performing the momentum balance in the rotor-relative reference frame – effectively treating the structural velocity variation as a variation in inflow, despite being theoretically incorrect – is practically effective in the vast majority of the cases analysed herein. In fact, once augmented with a dynamic inflow model, DBEM is able to predict aerodynamic thrust variation in most of the analysed cases and still represents a valuable industrial tool in the case of emerging FOWT technology. However, treating structural velocities as variations in relative inflow, leads to inconsistencies in the case of rotor-wake interaction, where DBEM is found to be unable to reproduce the results of LLFVW and ALM, an indication of both the limits of BEM and of an area of possible future improvement.

690 Lastly, this work was carried out on a scaled 10 MW rotor. The outcomes of the analysis may be more significant in the context of ever larger rotors that are being prototyped and built, which may be more influenced by dynamic inflow effects, as wake-reduced frequency depends on the rotor diameter. Returning wake effects may also be more likely to arise since larger rotors typically feature lower revolution speeds. In addition, as these dynamic effects are more prominent at high-oscillation frequencies, tension-leg platforms, which feature high pitch natural frequencies, could be affected by resonance and thus induce

unsteady aerodynamic effects that may not be appropriately captured by BEM models. More research is therefore needed in this regard.

700 **Author Contributions** This study represents one of the main outcomes of F. Papi's PhD research program. He conceptualized the study and the additional tests beyond the UNAFLOW experiments, reviewed existing work, performed the numerical simulations, analysed the results, and wrote the first draft. A. Bianchini provided guidance in the PhD research project, discussed the idea and the results, contributed to the analysis of results, and reviewed the manuscript. A. Robertson provided support for the discussion of the implications of the main findings in the field of floating offshore wind energy and reviewed the manuscript. J. Jonkman provided guidance in the analysis of NREL simulation tools and collaborated in the discussion of the results; he also reviewed the manuscript.

705 **Acknowledgements** The authors wish to thank L. Pagamonci from the University of Florence for his support in running the ALM simulations. Thanks are also due to Prof. G. Ferrara of the University of Florence for his guidance during F. Papi's PhD program.

This work was authored in part by the National Renewable Energy Laboratory, operated by Alliance for Sustainable Energy, LLC, for the U.S. Department of Energy (DOE) under Contract No. DE-AC36-08GO28308. Funding provided by U.S. Department of Energy Office of Energy Efficiency and Renewable Energy Wind Energy Technologies Office. The views expressed in the article do not necessarily represent the views of the DOE or the U.S. Government. The U.S. Government retains and the publisher, by accepting the article for publication, acknowledges that the U.S. Government retains a nonexclusive, paid-up, irrevocable, worldwide license to publish or reproduce the published form of this work, or allow others to do so, for U.S. Government purposes.

715 **Data availability** All data presented in the study are openly available upon request to the contact authors.

References

- Bak, C., Zahle, F., Bitsche, R., Kim, T., Yde, A., Henriksen, L. C., Natarajan, A., and Hansen, M.: Description of the DTU 10 MW Reference Wind Turbine, DTU Wind Energy, 2013.
- 720 Bayati, I., Belloli, M., Bernini, L., Fiore, E., Giberti, H., and Zasso, A.: On the functional design of the DTU10 MW wind turbine scale model of LIFES50+ project, *J. Phys.: Conf. Ser.*, 753, 052018, <https://doi.org/10.1088/1742-6596/753/5/052018>, 2016.
- Bayati, I., Belloli, M., Bernini, L., and Zasso, A.: A Formulation for the Unsteady Aerodynamics of Floating Wind Turbines, With Focus on the Global System Dynamics, in: Volume 10: Ocean Renewable Energy, ASME 2017 36th International

- 725 Conference on Ocean, Offshore and Arctic Engineering, Trondheim, Norway, V010T09A055,
<https://doi.org/10.1115/OMAE2017-61925>, 2017a.
- Bayati, I., Belloli, M., Bernini, L., Giberti, H., and Zasso, A.: Scale model technology for floating offshore wind turbines, *IET Renewable Power Generation*, 11, 1120–1126, <https://doi.org/10.1049/iet-rpg.2016.0956>, 2017b.
- Bergua, R. and et. al.: OC6 Project Phase III: Validation of the Aerodynamic Loading on a Wind Turbine Rotor Undergoing Large Motion Caused by a Floating Support Structure, *Wind Energy Science Journal*, 8, 465–485, <https://doi.org/10.5194/wes-8-465-2023>, 2023.
- 730 Bernini, L., Bayati, I., Boldrin, D. M., Cormier, M., Carboni, M., and Mikkelsen, R.: UNsteady Aerodynamics for Floating Wind (UNAFLOW), IRPWIND, 2018.
- Boorsma, K. and Caboni, M.: Numerical analysis and validation of unsteady aerodynamics for floating offshore wind turbines, TNO, Delft, Netherlands, 2020.
- 735 Boorsma, K., Wenz, F., Lindenburg, K., Aman, M., and Kloosterman, M.: Validation and accommodation of vortex wake codes for wind turbine design load calculations, *Wind Energ. Sci.*, 5, 699–719, <https://doi.org/10.5194/wes-5-699-2020>, 2020.
- Buhl, M. L., Jr.: New Empirical Relationship between Thrust Coefficient and Induction Factor for the Turbulent Windmill State, <https://doi.org/10.2172/15016819>, 2005.
- Burton, T. (Ed.): *Wind energy: handbook*, J. Wiley, Chichester ; New York, 617 pp., 2001.
- 740 Cioni, S., Papi, F., Pagamonci, L., Bianchini, A., Ramos-García, N., Pirrung, G., Corniglion, R., Lovera, A., Galván, J., Boisard, R., Fontanella, A., Schito, P., Zasso, A., Belloli, M., Sanvito, A., Persico, G., Zhang, L., Li, Y., Zhou, Y., Mancini, S., Boorsma, K., Amaral, R., Viré, A., Schulz, C. W., Netzband, S., Soto Valle, R., Marten, D., Martín-San-Román, R., Trubat, P., Molins, C., Bergua, R., Branlard, E., Jonkman, J., and Robertson, A.: On the characteristics of the wake of a wind turbine undergoing large motions caused by a floating structure: an insight based on experiments and multi-fidelity simulations from the OC6 Phase III Project, *Wind Energy Science Discussions*, 1–37, <https://doi.org/10.5194/wes-2023-21>, 2023.
- 745 Corniglion, R., Harris, J. C., and Peyrard, C.: The aerodynamics of a blade pitch, rotor speed, and surge step for a wind turbine regarding dynamic inflow, *Wind Energy*, 25, 858–880, <https://doi.org/10.1002/we.2702>, 2022.
- Damiani, R. R. and Hayman, G.: The Unsteady Aerodynamics Module For FAST8, <https://doi.org/10.2172/1576488>, 2019.
- 750 Ferreira, C., Yu, W., Sala, A., and Vire, A.: Dynamic inflow model for a Floating Horizontal Axis Wind Turbine in surge motion, *Wind Energ. Sci.*, 7, 469–485, <https://doi.org/10.5194/wes-2021-34>, 2022.
- Fontanella, A., Bayati, I., Mikkelsen, R., Belloli, M., and Zasso, A.: UNAFLOW: a holistic wind tunnel experiment about the aerodynamic response of floating wind turbines under imposed surge motion, *Wind Energy Science*, 6, 1169–1190, <https://doi.org/10.5194/wes-6-1169-2021>, 2021.
- Hansen, M. O. L.: *Aerodynamics of wind turbines*, 2nd ed., Earthscan, London ; Sterling, VA, 181 pp., 2008.
- 755 Jost, E., Klein, L., Leipprand, H., Lutz, T., and Krämer, E.: Extracting the angle of attack on rotor blades from CFD simulations, *Wind Energy*, 21, 807–822, <https://doi.org/10.1002/we.2196>, 2018.
- Leishman, J. G.: *Principles of Helicopter Aerodynamics*, Cambridge University Press, 866 pp., 2016.

- 760 Mancini, S., Boorsma, K., Caboni, M., Cormier, M., Lutz, T., Schito, P., and Zasso, A.: Characterization of the unsteady aerodynamic response of a floating offshore wind turbine to surge motion, *Wind Energ. Sci.*, 5, 1713–1730, <https://doi.org/10.5194/wes-5-1713-2020>, 2020.
- Mancini, S., Boorsma, K., Caboni, M., Hermans, K., and Savenije, F.: An engineering modification to the blade element momentum method for floating wind turbines, *J. Phys.: Conf. Ser.*, 2265, 042017, <https://doi.org/10.1088/1742-6596/2265/4/042017>, 2022.
- 765 Matha, D.: Model Development and Loads Analysis of an Offshore Wind Turbine on a Tension Leg Platform, with a Comparison to Other Floating Turbine Concepts, University of Colorado - Boulder, 2009.
- Ning, A., Hayman, G., Damiani, R., and Jonkman, J. M.: Development and Validation of a New Blade Element Momentum Skewed-Wake Model within AeroDyn, in: 33rd Wind Energy Symposium, 33rd Wind Energy Symposium, Kissimmee, Florida, <https://doi.org/10.2514/6.2015-0215>, 2015.
- 770 Ning, A. S.: A simple solution method for the blade element momentum equations with guaranteed convergence: Guaranteed solution of the BEM equations, *Wind Energ.*, n/a-n/a, <https://doi.org/10.1002/we.1636>, 2013.
- Øye, S.: Tjæreborg Wind Turbine: 4. dynamic inflow measurement, Tjæreborg Wind Turbine, Lyngby, 1991.
- Pagamonci, L., Papi, F., Balduzzi, F., Xie, S., Sadique, J., Scienza, P., and Bianchini, A.: To what extent is aeroelasticity impacting multi-megawatt wind turbine upscaling? A critical assesment, in: accepted for presentation, 78th Italian National Congress ATI (ATI 2023), 2023.
- 775 Papi, F. and Bianchini, A.: Technical challenges in floating offshore wind turbine upscaling: A critical analysis based on the NREL 5 MW and IEA 15 MW Reference Turbines, *Renewable and Sustainable Energy Reviews*, 162, 112489, <https://doi.org/10.1016/j.rser.2022.112489>, 2022.
- Papi, F., Perignon, Y., and Bianchini, A.: Derivation of Met-Ocean Conditions for the Simulation of Floating Wind Turbines: a European case study, *J. Phys.: Conf. Ser.*, 2385, 012117, <https://doi.org/10.1088/1742-6596/2385/1/012117>, 2022.
- 780 Patryniak, K., Collu, M., and Coraddu, A.: Rigid Body Dynamic Response of a Floating Offshore Wind Turbine to Waves: Identification of the Instantaneous Centre of Rotation Through Analytical And Numerical Analyses, <https://doi.org/10.2139/ssrn.4455436>, 22 May 2023.
- Perez-Becker, S., Papi, F., Saverin, J., Marten, D., Bianchini, A., and Paschereit, C. O.: Is the Blade Element Momentum theory overestimating wind turbine loads? – An aeroelastic comparison between OpenFAST’s AeroDyn and QBlade’s Lifting-Line Free Vortex Wake method, *Wind Energ. Sci.*, 5, 721–743, <https://doi.org/10.5194/wes-5-721-2020>, 2020.
- 785 Ramachandran, G. K. V., Robertson, A., Jonkman, J. M., and Masciola, M. D.: Investigation of Response Amplitude Operators for Floating Offshore Wind Turbines: Preprint, National Renewable Energy Lab. (NREL), Golden, CO (United States), 2013.
- Ramos-García, N., Kontos, S., Pegalajar-Jurado, A., González Horcas, S., and Bredmose, H.: Investigation of the floating IEA Wind 15 MW RWT using vortex methods Part I: Flow regimes and wake recovery, *Wind Energy*, 25, 468–504, <https://doi.org/10.1002/we.2682>, 2022.
- 790 Ribeiro, A. F. P., Casalino, D., and Ferreira, C. S.: Surging Wind Turbine Simulations with a Free Wake Panel Method, *J. Phys.: Conf. Ser.*, 2265, 042027, <https://doi.org/10.1088/1742-6596/2265/4/042027>, 2022.

- 795 Ribeiro, A. F. P., Casalino, D., and Ferreira, C. S.: Nonlinear inviscid aerodynamics of a wind turbine rotor in surge, sway, and yaw motions using a free-wake panel method, *Wind Energy Science*, 8, 661–675, <https://doi.org/10.5194/wes-8-661-2023>, 2023.
- Richards, K. J., Senecal, P. K., and Pomraning, E.: CONVERGE 3.0, Convergent Science, Madison, WI (2023), Convergent Science, Madison, WI, 2023.
- 800 Schepers, G.: Pragmatic Models: BEM with Engineering Add-Ons, in: Handbook of Wind Energy Aerodynamics, edited by: Stoevesandt, B., Schepers, G., Fuglsang, P., and Sun, Y., Springer International Publishing, Cham, 393–436, https://doi.org/10.1007/978-3-030-31307-4_19, 2022.
- Schulz, C. W.: A wind turbine rotor in surge motion: New insights into unsteady aerodynamics of an FOWT from experiments and simulations, 2023.
- Sebastian, T. and Lackner, M. A.: Characterization of the unsteady aerodynamics of offshore floating wind turbines: Unsteady aerodynamics of offshore floating wind turbines, *Wind Energ.*, 16, 339–352, <https://doi.org/10.1002/we.545>, 2013.
- 805 Shaler, K., Branlard, E., and Platt, A.: OLAF User’s Guide and Theory Manual, National Renewable Energy Lab. (NREL), Golden, CO (United States), <https://doi.org/10.2172/1659853>, 2020.
- Snel, H. and Schepers, J. G.: Joint investigation of dynamic inflow effects and implementation of an engineering method, 1995.
- 810 Sørensen, J. N. and Shen, W. Z.: Numerical Modeling of Wind Turbine Wakes, *Journal of Fluids Engineering*, 124, 393–399, <https://doi.org/10.1115/1.1471361>, 2002.
- Sørensen, J. N., Shen, W. Z., and Munduate, X.: Analysis of wake states by a full-field actuator disc model, *Wind Energy*, 1, 73–88, [https://doi.org/10.1002/\(SICI\)1099-1824\(199812\)1:2<73::AID-WE12>3.0.CO;2-L](https://doi.org/10.1002/(SICI)1099-1824(199812)1:2<73::AID-WE12>3.0.CO;2-L), 1998.
- de Vaal, J. B., Hansen, M. H., and Moan, T.: Effect of wind turbine surge motion on rotor thrust and induced velocity, *Wind Energy*, 17, 105–121, <https://doi.org/10.1002/we.1562>, 2012.
- 815 Van Garrel, A.: Development of a wind turbine aerodynamics simulation module, 2003.
- Veers, P., Dykes, K., Basu, S., Bianchini, A., Clifton, A., Green, P., Holttinen, H., Kitzing, L., Kosovic, B., Lundquist, J. K., Meyers, J., O’Malley, M., Shaw, W. J., and Straw, B.: Grand Challenges: wind energy research needs for a global energy transition, *Wind Energ. Sci.*, 7, 2491–2496, <https://doi.org/10.5194/wes-7-2491-2022>, 2022.
- 820 Xie, S.: An actuator-line model with Lagrangian-averaged velocity sampling and piecewise projection for wind turbine simulations, *Wind Energy*, 24, 1095–1106, <https://doi.org/10.1002/we.2619>, 2021.