

# Method to predict the minimum measurement and experiment durations needed to achieve converged and significant results in a wind energy field experiment

Daniel R. Houck<sup>1</sup>, Nathaniel B. de Velder<sup>1</sup>, David C. Maniaci<sup>1</sup>, and Brent C. Houchens<sup>1</sup>

<sup>1</sup>1515 Eubank Blvd SE, Albuquerque, NM 87123, USA

**Correspondence:** Daniel Houck (drhouck@sandia.gov)

**Abstract.** Experiments offer incredible value to science but results must always come with an uncertainty quantification to be meaningful. This requires grappling with sources of uncertainty and how to reduce them. In wind energy, field experiments are sometimes conducted with a control and treatment. In this scenario uncertainty due to bias errors can often be neglected as they impact both control and treatment approximately equally. However, uncertainty due to random errors propagates such that the uncertainty in the difference between the control and treatment is always larger than the random uncertainty in the individual measurements if the sources are uncorrelated. As random uncertainties are usually reduced with additional measurements, there is a need to know the minimum duration of an experiment required to reach acceptable levels of uncertainty. We present a general method to simulate a proposed experiment, calculate uncertainties, and determine both the measurement duration (~~total time of measurements~~) and the experiment duration (~~total time to collect the required measurement data when including condition variability and time when measurement is not occurring~~) ~~required~~ required to produce statistically significant and converged results. The method is then demonstrated as a case study with a virtual experiment that uses real-world wind resource data and several simulated tip extensions to parameterize results by the expected difference in power. With the method demonstrated herein, experiments can be better planned by accounting for specific details such as controller switching schedules, wind statistics, and post-process binning procedures such that their impacts on uncertainty can be predicted and the measurement duration needed to achieve statistically significant and converged results can be determined before the experiment.

## 1 Introduction

There is a long history of experiments in wind energy and their necessity is still evident today. There have been several recent experiments to test wake steering for example (Fleming et al., 2019), (Simley et al., 2022), (Howland et al., 2022). The ongoing Rotor Aerodynamics, Aeroelastics, and Wake (RAAW) campaign is exemplary of the need for experiments and field measurements in wind energy as it seeks to provide a new and better validation data set (Kelley et al., 2023), (Letizia et al., 2023), (Rybchuk et al., 2023). The data produced by any experiment is most valuable when accompanied by uncertainty quantification that allows interpretation of accuracy. Oftentimes, our best attempts at an experiment produce results that, with properly calculated errorbars, are, at least in part, not statistically significant (Scholbrock et al., 2015), (Doekemeijer et al.,

25 2020). Results like these indicate the need to change measurement procedures, increase instrumentation accuracy, or record data for a longer duration.

All experiments may suffer both bias and random errors. When they can be entirely separated, the former is characterized by a non-zero mean and zero variance while the latter has a zero mean and a non-zero variance. Bias errors frequently originate in instrumentation that drifts out of calibration or from the turbine itself in the case of a wind energy field experiment (e.g., a yaw error). Reducing bias errors can be a tedious process to understand their precise sources and address the underlying causes. In wind energy field experiments, as in many disciplines, the interest is often the difference between two scenarios, for example, a controller design for wake or load mitigation (Fleming et al., 2019); a blade design (Bak et al., 2016), (Castaignet et al., 2010), (Couchman et al., 2014), (Gomez Gonzalez et al., 2021); or the effects of different atmospheric conditions (Lange et al., 2001), (Belu, 2012), (Simley et al., 2022). In these control and treatment experiments, especially when carried out simultaneously, it is often safe to assume that the bias errors are negligible to the difference because the non-zero mean of the total bias error is often equal in control and treatment and would be subtracted when considering the difference. When control and treatment cannot be carried out simultaneously, binning of data by atmospheric conditions also improves the validity of the assumption that the bias errors are negligible to the difference. While this assumption reduces one source of uncertainty, it also introduces a new complication in that the random uncertainty from two sources (the control and the treatment) must now be propagated into the difference. For example, if

$$\Delta P = P_1 - P_2, \tag{1}$$

where  $\Delta P$  is the difference between, say, power measurements from the control,  $P_1$ , and treatment,  $P_2$ , each of those measurements has some random uncertainty,  $\delta P_1$  and  $\delta P_2$ . If the experimental setups from which the two measurements are taken are the same in every other way, say control and treatment blades mounted on the same turbine, or two of the same turbines in very similar (statistically the same) conditions, it may be possible to assume that  $\delta P_1 \approx \delta P_2$ . In that scenario, and assuming these uncertainties are uncorrelated, then these uncertainties are combined in quadrature as

$$\delta(\Delta P) = \sqrt{(\delta P_1)^2 + (\delta P_2)^2} = \sqrt{2(\delta P_1)^2} \approx 1.4\delta P_1, \tag{2}$$

and the uncertainty in the difference,  $\delta(\Delta P)$ , is approximately 40% larger than the individual uncertainties. If the individual uncertainties are not uncorrelated, then the uncertainty of the difference could be as large as double the individual uncertainties if anticorrelated or it could be zero for perfectly correlated individual uncertainties (IEC, 2017). If the difference between control and treatment is significant, zero will not be within the interval represented as errorbars from the estimate.

The equation above can also be solved for a maximum allowable random uncertainty to achieve a predicted difference within uncertainty. For example, if a difference of 2% in a quantity of interest (QoI) was expected between the control and treatment, it can be shown that this requires that the random uncertainty of the individual measurements be only about 1.4% of the QoI (assuming they are uncorrelated). Wind energy experiments are frequently hoping to measure differences as small as 1-2% (Maniaci et al., 2020), further emphasizing the challenges to reduce uncertainties to sufficiently low levels to produce statistically significant results. Unlike uncertainty due to bias errors, uncertainty due to random errors can usually be reduced simply

by measuring over a longer duration. By measuring over a longer duration, the distribution of random contributions to error is more completely measured and the mean random error driven toward its theoretical value of zero.

60 Besides ensuring that results are significant, it is also important when considering ensemble statistics to ensure that data have converged to a given standard. When possible, for example in a controlled lab setting, long records can be recorded during stationary inflow conditions and a suitable convergence standard determined from this measurement. In the field, however, stationarity is not guaranteed and there are usually too many combinations of possible inflow conditions to consider. Nevertheless, it is critical to provide some measure of the convergence of each data set after binning and this too can be converted into  
65 a required measurement duration as it again amounts to knowing how many samples are needed in a given bin. Convergence is ensured by increasing the number of samples, but the rates at which convergence and significance are achieved may be different.

A key distinction we intend to make is the difference between the measurement duration required to reach significance and convergence and the experiment duration required. If measurements are uninterrupted, then these are equal. Occasionally,  
70 however, turbine operation must be attended, which leaves large portions of time at which there are no measurements, or instrumentation may have restrictions that limit continuous measurements. These situations may require longer experiment durations to capture measurements across the full range of required conditions. The key questions this paper aims to answer are: *What minimum measurement duration is required to achieve a sufficiently small uncertainty in the difference between control and treatment to yield a statistically significant and converged result? And furthermore, what experiment duration is required to*  
75 *achieve the minimum measurement duration?*

Using simulations to prepare for and predict the results of experiments is regular practice. Doekemeijer et al. (2020), Fleming et al. (2019), and Simley et al. (2022) used the FLOW Redirection and Induction in Steady state (FLORIS) model (NREL, 2020) to make predictions about their field experiments. It is rarer to use simulations to determine how much measurement time will be required to produce statistically significant results from a wind energy field study. Petrone et al. (2011) considered  
80 wind turbine performance under the uncertainty of several parameters, but not to aid in a field experiment, and Cassamo (2022) demonstrated algorithms for processing field data with constraints to produce desired uncertainty levels. Toft et al. (2016) came closest to the method proposed herein by evaluating the contributions of different wind parameters to the probability of turbine failure through a suite of OpenFAST simulations with TurbSim inflows.

Herein, we outline a method that can aid in the prediction of minimum measurement durations necessary to produce statistically significant and converged results in wind energy field experiments specifically with intent to reduce uncertainties due  
85 to random errors, though it is also generalizable to account for uncertainties due to bias errors. The method is first outlined very generally to emphasize that it is highly adaptable to many types of experiments and that it is software agnostic within the guidelines provided. Then, the method is demonstrated for an imagined field experiment informed by real wind-resource data such that several nuances can be better illustrated and explained.

## 90 2 General Methodology

The method described and demonstrated herein is highly flexible and adaptable to the particular needs of the experiment. At a very high level, it consists of performing a suite of simulations to represent a proposed experiment with a balance between computational time and fidelity. The outputs of the simulations are then used to perform a statistical analysis to quantify uncertainty and convergence to standards determined by the user and this data is finally converted into a prediction of the minimum measurement and experiment durations required to produce significant and converged results. At this level, the proposed method could be used for a variety of experiments in many fields, though the focus here is on wind energy and, in particular, field experiments as these present a particular challenge with long measurement durations required to reduce uncertainty due to random errors.

It should also be acknowledged that there are IEC standards relevant to wind energy field experiments (IEC, 2017, 2021) that researchers may choose to follow. The method laid out herein does not explicitly follow these standards, but it is entirely adaptable to comply with them. If, for example, one wished to follow IEC 61400-12-1 to create a power curve according to standards, then it would be necessary to use the method of bins for uncertainty analysis with the simulated data as detailed in Annex E of that standard. As this is a virtual experiment, however, some assumptions may need to be made regarding the many sources of uncertainty that are tracked and included by the standard but that are not explicitly represented in the virtual experiment. The Category B uncertainties in IEC 61400-12-1 could help define an appropriate range of simulation input parameters, for example on wind speed, shear, air density, etc. Uncertainties that cannot be included in estimating input parameters can be included in post-processing of the data. In fact, by including reasonable estimates of every source of uncertainty, it would be possible to rank the importance of each source through an uncertainty quantification and thereby determine which may be most critical to reduce.

110 The simulation method, inflow representation, and uncertainty analyses are discussed next in general terms and again, with reference to a case study, after.

### 2.1 Simulation Method

First, an appropriate simulation code is needed. Here, “appropriate” has several requirements. First and foremost, it must simulate the quantities of interest (QoI) to be measured in the experiment with acceptable accuracy. This requires expert judgement to ensure the model fidelity does not neglect effects critical to the measurement of interest. For example, if the three-dimensional flow around the blades is considered important to the QoI, then a Blade Element Momentum approach may not suffice. Second, it must be fast enough with available resources to run potentially thousands of simulations that cover the wide range of operating conditions possible. This also assumes that validated models of any turbines in the experiment are also available for use in the chosen code. Finally, it requires that the inflow be represented with enough fidelity to simulate the experiment and capture effects of any specific conditions that are expected to be important to the QoIs. High fidelity may not be needed as long as the expected variance is statistically represented.

## 2.2 Inflow Representation

As any wind energy experiment is essentially a response to the inflow, the inflow conditions are the first required input. For a field experiment, this requires knowledge of the wind resource at the site and time of year when the experiment will take place. In contrast, in a wind tunnel experiment or simulation the inflow is typically prescribed or controlled. When simulating a representative inflow for a field experiment, ideally historical data from a meteorological (met) tower at the site can be used to reduce uncertainties and required assumptions about the inflow conditions. If there is not met data, probabilistic distributions of inflow parameters such as hub-height wind speed, turbulence intensity, and shear exponent (the specific parameters will depend on the simulation code being used) could be used to construct representative inflows. One difficulty with the latter approach is determining the potential for correlation among parameters such that the joint probabilities are accurately constructed to represent conditions at the site. Temporal (i.e., time of year and day) distributions, as opposed to probabilistic, help with this construction. When using historical data, it is best to use data from the time period of interest (e.g., certain months and/or hours) over multiple years to have a more robust representation of “typical” conditions as individual years may differ.

After selecting the simulation method and having acquired representative inflow data, the inflow data are now processed into the format required by the simulation code. Here, the method uses 10-minute bin intervals, which is standard for wind energy field experiments, though it could be easily adapted for other needs. This accepts that the effects of phenomena happening on shorter time scales could be reduced due to long averages and phenomena happening on longer time scales may not be adequately captured, so this averaging time is an important consideration depending on the goals of the experiment. Indeed, numerical representations of inflows will almost certainly underrepresent the true variability in the inflow. TurbSim, for example, will drive the velocity distribution toward a Gaussian ~~and it can easily be shown that, and~~ longer simulation times generally create longer tails ~~and thereby capture~~ within the extremes that the model can capture, which will capture a more complete representation of the inflow to a point. If the QoI is an extreme, ~~like that the model can capture, say,~~ a maximum load, then bins longer than 10 minutes may be necessary such that ~~these QoI remain~~ this QoI is recorded relative to the mean conditions upon binning by condition (binning by condition will be discussed below). If, however, average quantities are of interest, then more 10-minute bins ~~should~~ will generally help make up for missing the tails of the distributions of any inflow parameters in each bin.

While more simulations per bin and/or longer simulations will help to replace some of the variability missed when comparing modeled inflows to measurements, it will not close the gap entirely. As mentioned in section 2.1, the proposed method will only yield meaningful results if the modeling tools can capture the QoI, which will require input from subject matter experts. If the QoI is believed to be sensitive to inflow fidelity, then comparisons could be made against higher fidelity methods, such as large-eddy simulation (LES), to verify the adequacy and/or quantify the uncertainty of the low-fidelity approach. These uncertainties can then be incorporated into the final analysis.

Some uncertainties, however, such as the difference between measurements at the met tower and conditions at the rotor, are important to retain in the virtual experiment as they can help replicate the real experiment. For example, the velocity measured at the met tower may be biased from the velocity at the rotor. In the control and treatment scenario presented here, this bias

is inherently subtracted out. When there is not an available control, such biases in measurements would be critical to capture in the simulations or to incorporate into the post-processing and analyses of the data. Representations of uncertainties in the inflow measurements themselves can and should be included in the uncertainty analysis of the virtual experiment.

160 The simplest approach when using historical data is to create 10-minute bins, calculate the necessary statistics for each bin (e.g., hub-height wind speed, turbulence intensity, and shear exponent), and then use those as inputs to create inflows for the simulations. It is likely necessary to apply some level of quality control to the historical data before doing this. Depending on the robustness of the historical data set, it may be necessary to use statistics on bins shorter than 10 minutes to ensure that enough inputs can be created to represent the time period of the experiment. If so, and especially if the bin length is short, it is advisable to check the correlation time of the historical data (assuming time series are available) to ensure that the length of  
165 each bin is longer than the decorrelation time. This ensures that each input for the creation of simulated inflows is unique.

Once the set of simulated inflows is complete, the simulations are run with outputs for the QoIs. Again, assuming the field experiment standard of 10-minute statistics, each simulation is run to acquire 10 minutes of usable data (i.e., after any start up time) such that each simulation represents one 10-minute bin of field data and statistics from each simulation are calculated for further analysis.

### 170 **2.3 Analysis and Uncertainty Quantification**

The analysis stage may vary depending on the experiment and QoI, but the goal of this method is to quantify the uncertainty. Using the mean statistics of each simulation, the data are binned on inflow statistics, most likely by wind speed, though they could be binned on other parameters or even on multiple parameters (binning on wind direction is very common, for example). In each resulting bin, a running bootstrap analysis is performed (Efron and Tibshirani, 1986). Often, two standard deviations  
175 are reported as the uncertainty interval, however this assumes that the underlying distribution is Gaussian. The bootstrap analysis, on the other hand, makes no assumption regarding the underlying distribution and so offers a more accurate prediction. Specifically, the bootstrap analysis is used to calculate a confidence interval on the running mean of each QoI such that it is updated for each sequential sample that is added to the bin. It is for the user to decide what the appropriate confidence interval is, though we will offer a few words of caution. The P-value, or  $\alpha$ , which is one minus the confidence interval, that is chosen  
180 for an experiment is in most ways arbitrary. In fact, the originator of the idea of a P-value, Ronald Fisher, chose 0.05 as only an example and never intended it to be a definitive test (Nuzzo, 2014). The calculation of a confidence interval and whether or not the QoI is significant is not sufficient on its own to draw any conclusions (Wasserstein and Lazar, 2016). It merely suggests whether or not the data are more or less compatible with the hypothesis, and further support for a hypothesis is then needed in the form of other statistical evidence. In practice, whether or not a QoI is significant as an outcome of this method could be  
185 used to indicate if the actual experiment is even warranted.

A word of caution is also needed because bootstrap analyses are not robust with small sample sizes (Jenkins and Quintana-Ascencio, 2020). While there is no firm agreement in the literature, a minimum number of samples in the range of 8-25 is probably necessary for a meaningful bootstrap analysis, with a higher minimum needed when the data set is known to have higher variance (Jenkins and Quintana-Ascencio, 2020). This helps prevent narrowness bias that the bootstrap method can

190 cause (Hesterberg, 2014). The running bootstrap analysis can start at the selected minimum, or bins with fewer samples than  
the minimum can simply be discarded at any stage. There are several recommendations in the literature on the minimum num-  
ber of resamples necessary, i.e., the number of replicates created by sampling the original data set with replacement. Hesterberg  
(2014) makes a compelling argument to use a minimum of 15,000 and we follow this. Note also that, with as few as six sam-  
ples, there are over 46,000 unique permutations when sampling with replacement. The bootstrap calculated confidence interval  
195 now quantifies the uncertainty due to random error, primarily associated with inflow conditions, of each QoI for each bin for  
the control and treatment.

If the experiment is a control and treatment, then, for each QoI and bin, the difference between the control and treatment is  
found and the uncorrelated uncertainties combined with the root-sum-square, both on a running basis. From this, the signifi-  
cance and convergence criteria can be selected and applied, and the sample number at which these are both achieved in each  
200 bin for each QoI can be determined. Finally, the sample number is converted into a record time using either timestamps of  
the original inflow data or the probabilistic distribution. If the experiment is a control and treatment and data are appropriately  
binned to remove any bias, this is all that is required to quantify uncertainty as previously discussed. If it is not, any uncertainty  
due to bias errors should be calculated for each QoI in each bin as needed and then combined with the uncertainty due to ran-  
dom error before applying significance and convergence criteria (JCGM100:2008, 2008). This is a straightforward procedure  
205 if these uncertainties are well known. In modeling the turbine, however, it is possible that sources of bias are added (e.g., a  
modeling error) or removed (e.g., an ideal representation of a strain gauge compared to a real one with an uncertain offset),  
and these can only be estimated by validating the model against experimental data, but such turbine data are often unavailable  
to researchers. In this case, these uncertainties will need to be estimated.

## 2.4 General Discussion

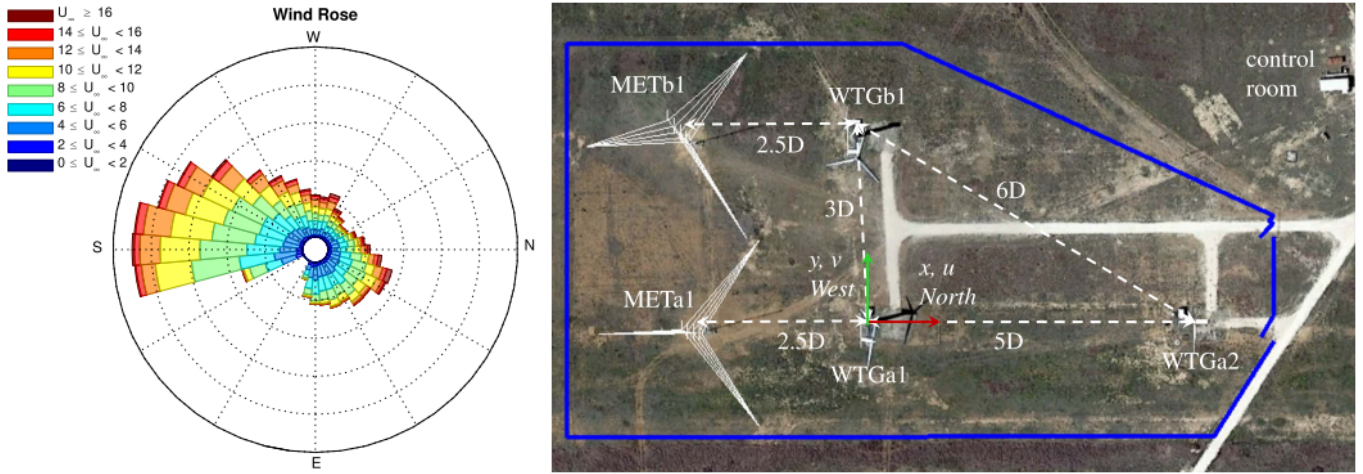
210 As the goal of this method is to determine how long data must be recorded to ensure statistically significant and converged  
results, it is critical that the inflow conditions be represented as accurately as possible and that the QoIs be simulated as  
accurately as possible, though perhaps allowing for some trade-offs in computation time. The results of this procedure really  
determine a minimum amount of time required as it assumes no additional quality control or filtering are required, i.e., every  
simulation is assumed valid. Any real experiment will of course have issues with sensors, unexpected delays, etc. that are not  
215 accounted for in this procedure, which will increase the required duration of the experiment.

The uncertainty can also be considerably affected by the analysis and in particular the binning process. While more iterative  
methods of binning can be used after data collection to ensure certain levels of uncertainty are achieved (Cassamo, 2022), this  
method allows one to test various methods of binning and analysis beforehand and weigh their advantages against the potential  
requirement for increased data collection time. For example, different bin widths can be tested to determine the effects on  
220 number of samples required for convergence and certainty and those results can be converted into a duration of data collection.  
Similarly, binning on multiple parameters can be tested. If one turbine is being used as the control and the treatment by, for  
example, switching between two control methods, the data produced with this method can be analyzed to determine an optimal  
switching schedule to achieve the desired results.

### 3 Case Study Example of Blade Tip Extensions

225 In this example of the method, we imagine an experiment at the Scaled Wind Farm Test (SWiFT) (see Fig. 1) facility operated by Sandia National Labs in Lubbock, Texas (Berg et al., 2013). At the SWiFT site, there are three modified V27 turbines with 27 m rotor diameters ( $D$ ) sited such that wind turbine generator a1 (WTGa1) and WTGb1 are ideally situated for control and treatment experiments relative to the dominant wind direction from the south. Each also has a dedicated met tower (METa1 and METb1) 2.5D upstream in the dominant wind direction with sonic anemometers at 18, 31 (hub height), and 45 m.

For the experiment, we imagine operating WTGa1 as the baseline, or control, in a control and treatment experiment. For



**Figure 1.** The Scaled Wind Farm Test (SWiFT) facility in Lubbock, TX and a representative annual wind rose for the site. Image taken from (Herges et al., 2017). Note both images are oriented with North to the right.

230

WTGb1, we will test five different tip extensions designed only to produce a difference in power over the control. Using historic data from METa1 and METb1, we can calculate the necessary statistics to represent testing over three months in a suite of OpenFAST simulations using TurbSim inflows.

#### 3.1 Tip Extensions

235 In this virtual experiment, five tip extensions are created to be the treatment rotor and to represent different levels of expected change between the control and treatment such that the results can be parameterized by the expected change. The design of the tip extensions is based purely on the expected proportion between power and rotor-swept area:

$$D_{treat} = \sqrt{(P_{treat}/P_{ctrl})D_{ctrl}^2}, \quad (3)$$

240 where  $D_{treat}$  is the diameter of a treatment rotor with tip extension,  $P_{treat}$  and  $P_{ctrl}$  are the desired power of the treatment and control rotors, respectively, and  $D_{ctrl} = 27$  m is the diameter of the control rotor. This assumes that all rotors have the same



coefficient of power, which is

$$C_P = \frac{P}{\frac{1}{2}\rho A U_\infty^3}, \quad (4)$$

where  $P$  is mechanical power,  $\rho$  is the air density,  $A$  is the rotor-swept area, and  $U_\infty$  is the freestream wind speed. Each tip extension is created by linearly extrapolating the chord and twist (the V27 blade has no curve or sweep) of the control rotor and using the same airfoil as the original tip in any new blade stations. These changes are made in the blade definition of OpenFAST's AeroDyn module. Table 3.1 shows the diameters of all rotors and the expected and actual power changes. The lengths of the five tip extensions were selected to span the range of performance improvements often expected in blade modification research. We were interested to know if, for example, a 0.75% increase would take years to measure, while say a 3% or 5% increase might take only months. The practical challenges of measuring differences in field experiments also motivated us to look at four QoIs in hopes that some differences would prove easier to measure than others.

**Table 1.** Diameters, expected and actual increases in power, and  $C_P$  for each rotor.

D [m]	27	27.1	27.2	27.4	27.7	28.3
Expected region 2 power gain [%]	-	0.75	1.5	3	5	10
Actual region 2 power gain [%]	-	1.98	2.67	3.95	5.63	11.12
Actual average region 2 $C_P^a$ [-]	0.3966	0.4003	0.4000	0.3991	0.3968	0.3999

<sup>a</sup>Average  $C_P$  is calculated using average  $P$  and average  $U_\infty$  in each wind speed bin as opposed the average of all  $C_P$  in a bin.

In addition to modifying the blade properties, each rotor uses the Rotor Open Source Controller (ROSCO) (NREL, 2021) tuning procedure to ensure that it is operated optimally by finding the combination of blade pitch and tip speed ratio that maximizes  $C_P$  in region 2 of the power curve. Region 2 is defined as the range of wind speeds where the turbine produces power but wind speeds are too low for it to reach rated power. The rated power is also fixed for all rotors to represent installing these rotors on the same generator. The goal of these five tip extensions is exclusively to produce a parameterizable difference in operation from the control rotor and no additional design work was performed. It is sufficient for this demonstration that the rotors create a difference to measure.

It is notable that every tip extension exceeds the estimated difference in power as shown in Table 3.1. This is because the controller optimization leads to very small differences in  $C_P$  among the rotors, which can lead to the relatively larger differences between the expected and actual power gains. Note that the rotors with a  $C_P$  closer to the baseline better match the expected power gain. In a real experiment, we would also expect to modify controller parameters to optimize rotor performance within limitations such as blade and tower loads. For the purposes of this demonstration, we accept these changes in  $C_P$  and report all findings assuming an optimized controller for each rotor. This demonstrates the importance of measuring differences due to all modifications of a rotor including physical and operational.

### 3.2 Inflow Creation for the Case Study

As mentioned, the SWiFT site has two met towers, each upstream of the two turbines to be simulated, which allows us to use  
270 historical data to accurately represent inflow conditions at the test site. Additionally, a 200 m met tower operated by Texas Tech  
University is adjacent to the SWiFT site and was previously used to characterize the site (Kelley and Ennis, 2016).

For this experiment, we imagine testing over the months of September, October, and November during the hours of 9 AM  
to 5 PM for five days a week (considering working hours for site operators). This filtering of times reflects the current require-  
ments for attended operation at the SWiFT site, but, for experiments with unattended operation, then the full 24 hr/day met  
275 data set would be used. This also points to the important distinction between the length of the measurement time and the length  
of the experiment mentioned previously. In this virtual experiment, the experiment is imagined to last 3 months (2,184 hours),  
but the measurement time when the turbine is being operated (and the length of time represented by the met data set) totals  
only 480 hours spread over 3 months. As will be seen in the results, this has significant implications for the total time required  
to meet convergence and significance criteria as an experiment that is not operating the turbines and recording data at all times  
280 is missing at least some portion of the possible data collection. Finally, if this experiment were real, then this data should have  
also been filtered to remove times when either turbine would have been in the wake of the other. Given the dominant wind  
direction and to ensure there was enough data for this demonstration, however, this additional step was not taken.

Data from each met tower were filtered for these months and hours over multiple years and binned in 10-minute intervals.  
As inputs, TurbSim requires the mean hub-height wind speed, turbulence intensity, and shear exponent, so these were calcu-  
285 lated for each bin (Jonkman and Buhl, 2006). Note that other inflow parameters, e.g., density, do change over time and can  
significantly effect the results for some QoIs and may need to be included. For simplicity, density was assumed to be constant in  
this demonstration.

The turbulence intensity was calculated as

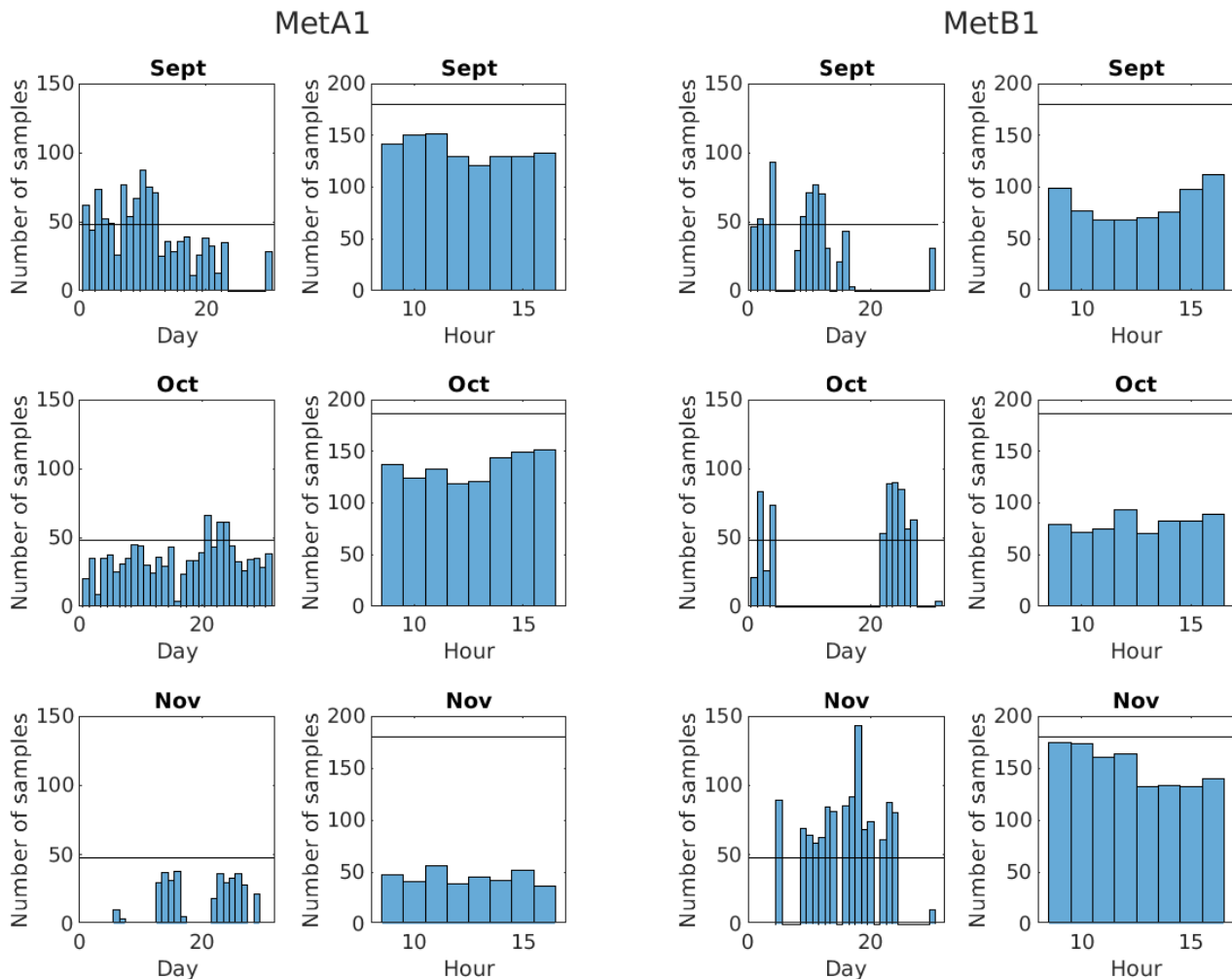
$$TI_{10} = \frac{\sigma_{10}}{U_{\infty,10}}, \quad (5)$$

290 where  $\sigma_{10}$  is the standard deviation of the hub-height freestream wind speed in the 10-minute bin and  $U_{\infty,10}$  is the average  
freestream wind speed in the 10-minute bin. For these simulations, the ScaleIEC parameter is turned on to ensure that the  
desired turbulence level is achieved. Liew and Larsen (2022), however, note that a similar scaling parameter in the aeroelastic  
code, HAWC2, causes a non-physical increase in energy at higher frequencies, so some caution may be necessary when  
interpreting results.

295 The shear exponent,  $\alpha$ , was calculated by fitting a power law between the wind speeds at two heights of the met tower such  
that

$$\alpha = (\ln(U_{45}) - \ln(U_{31})) / (\ln(45) - \ln(31)), \quad (6)$$

where each  $U$  is at a different height across the rotor plane. The shear exponent was then averaged for each 10-minute bin. An  
alternative approach of using the 10-minute averages to calculate a single shear exponent would also be acceptable and may be  
300 preferred when a few extremes could lead to a less representative average.



**Figure 2.** Histograms of the number of samples in each day and each working hour of each month for each met tower.

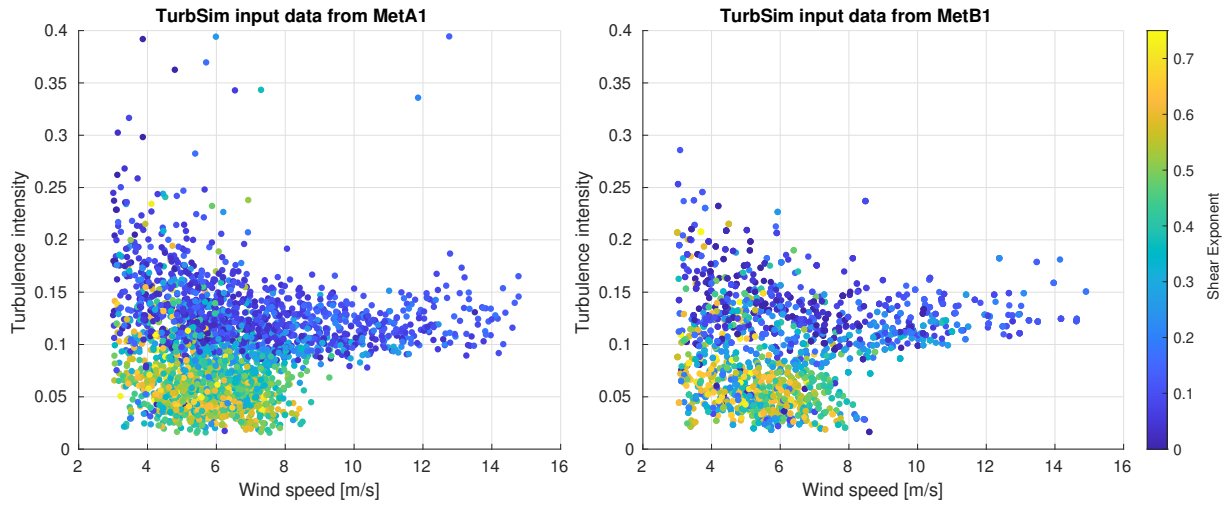
Since only the 10-minute statistics are needed as inputs to TurbSim, we did not apply quality control to the time series. Instead, we used the site characterization data to set minimum and maximum allowable values for each 10-minute statistic. Any bins with a parameter outside the allowable bounds were discarded. In this way, even if the time series data contain errors such as stuck sensors, only inflow conditions within the ranges determined by the previous site characterization are simulated.

305 To represent the intended experiment, we need 2,520 10-minute bins randomly selected over the duration of the experiment. After filtering, 4,228 acceptable 10-minute samples remained from METa1 and only 1,443 remained from METb1. To get to 2,520 samples from each, samples from METa1 were randomly downsampled and samples from METb1 were randomly upsampled with replacement. Inflows with the same inputs may still produce different results because they will use a different seed in TurbSim. It should be noted that upsampling with replacement means that not every simulation is unique in the mean,

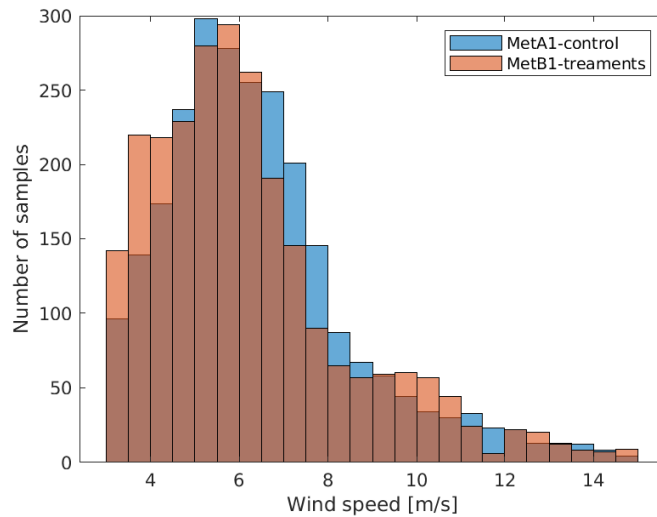
310 which could bias our results. One way to assess this potential is to look at the distribution of good samples across months and hours to determine if there is adequate representation of the full time period, which is what is shown in Fig. 2. For each month and met tower, the number of samples for each day and hour are shown with a black line marking 100% data availability over all 12 weeks. The reason this is crossed in many plots is that data are taken from multiple years, so a particular day, for example, can have more than 48 samples in it ( $8 \text{ hr} \times 6 \text{ 10-min bins per hr}$ ), and a particular hour can have more than 180 or 186 samples  
315 in it, depending on the month ( $30 \text{ or } 31 \text{ days} \times 6 \text{ 10-min bins per hr per day}$ ). Most days and all hours are undersampled, and there are significant gaps especially in the METb1 data. While the hours are undersampled, they are at least fairly uniformly sampled, which should prevent any biases in hourly representation. The days, however, are very unevenly sampled for some months, which could introduce biases, though day-to-day variations are likely less important than seasonal changes over weeks and months.

320 These gaps could be filled in by interpolation based on the distributions of inflow parameters within the time period, but, without looking deeper into what conditions are and are not represented in the available data, it can be difficult to judge the effects of this undersampling. To some extent this can be seen in Fig. 3, which shows that the spread of turbulence and shear appears to be well-represented in all wind speeds. As this is just a demonstration of the method, we will proceed with an acknowledgment that certain conditions may not be present in this data. When there are no significant gaps and the acceptable  
325 data provide a sufficient number of samples across the entire time period, upsampling with replacement should provide an accurate representation of the statistical weight of each condition without biasing results. The end result of this procedure is a set of 10-minute statistics from each met tower that will each be used to generate one TurbSim inflow for one OpenFAST simulation, which will then represent one 10-minute sample of field data.

The resulting distributions of conditions from each met tower can be seen in Fig. 3. Data from METb1 appears sparser  
330 because many points are resampled, though it is clear that general trends in conditions are adequately represented in both data sets. Finally, a histogram showing the number of samples by  $0.5 \text{ m s}^{-1}$  wind speed bins is shown in Fig. 4. This is useful to see both where there is more data in general and how the two data sets differ from each other in terms of the number of samples available in each wind speed bin.



**Figure 3.** Scatter plots of wind speed by turbulence intensity with color showing the shear exponent. Each point represents one set of input parameters for a TurbSim inflow, though some points in the METb1 set are used more than once.



**Figure 4.** Histograms of each set of inflow conditions in  $0.5 \text{ m s}^{-1}$  bins.

### 335 3.3 Case Study Simulations

All simulations are run using TurbSim-generated inflows in OpenFAST. TurbSim uses the hub-height wind speed, turbulence intensity, and shear exponent to numerically simulate time series of three-component wind speed vectors at points on a two-dimensional grid (Jonkman and Buhl, 2006). OpenFAST is a wind turbine simulator and provides modules such as InflowWind

to accommodate TurbSim inflows, AeroDyn to calculate aerodynamics using a blade element momentum theory, ElastoDyn  
340 to calculate structural responses, and ServoDyn to calculate drivetrain and actuator responses (NREL, 2023). ROSCO is in-  
corporated into ServoDyn to control the turbine relative to the unsteady, turbulent inflow. Using Sandia National Labs' high  
performance computing resources, each simulation is run on one node in approximately real time. In all, the control rotor is run  
with 2,520 different inflows from the METa1 data set to represent the control and each tip extension is run with 2,520 inflows  
from the METb1 data set to represent five different treatments.

### 345 **3.4 Results from the Case Study**

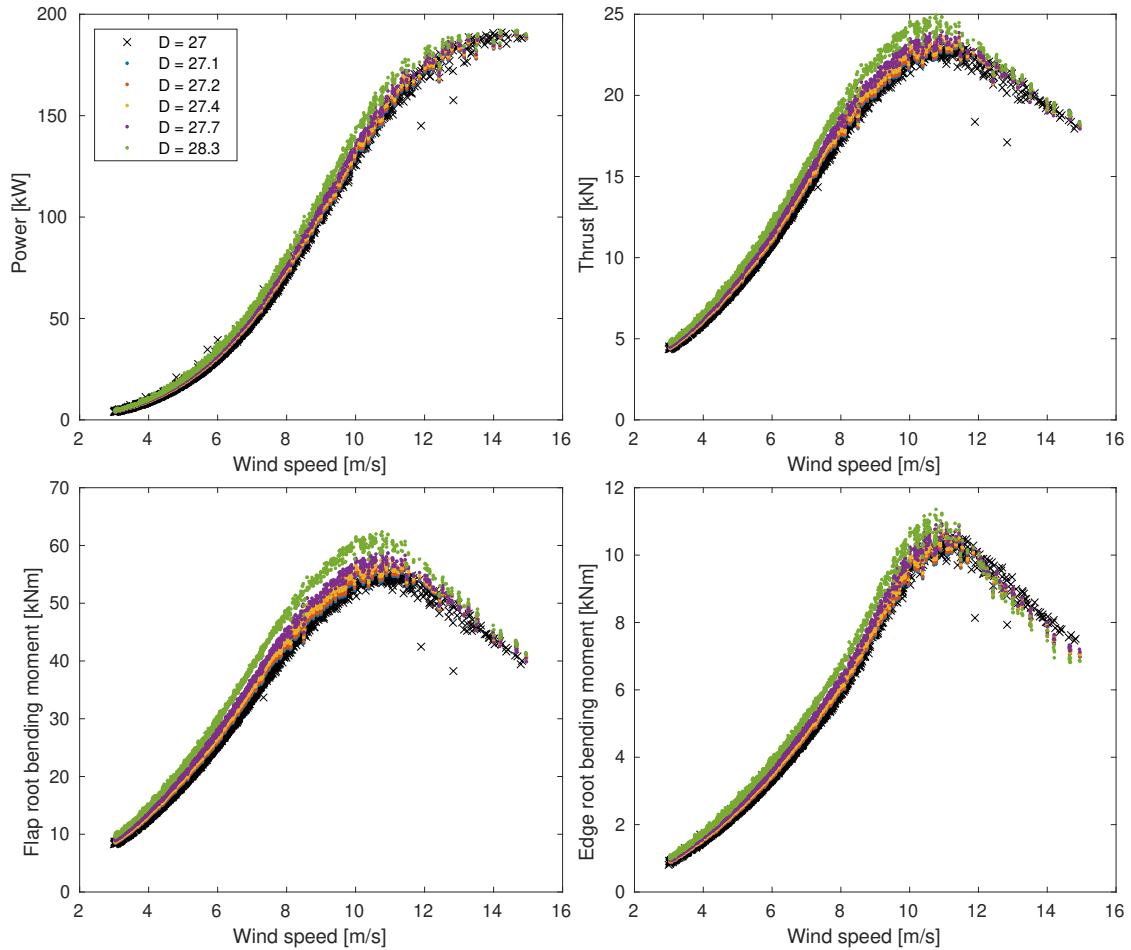
In the analysis that follows, we have made the assumption that all sources of uncertainty are uncorrelated. This is unverified,  
but suffices for the purpose of demonstration. Furthermore, we have not endeavored to strictly follow any relevant standards  
such as the IEC 61400-12 and -13 (IEC, 2017, 2021), though we emphasize that this method does not in anyway preclude  
following any standards that may be relevant. The method is essentially a framework within which many different analyses can  
350 be used.

Before proceeding to results from the simulations, some observations can be made based on the inflow inputs. In Fig. 3, it  
is evident that there is much more variability in the inflow in terms of turbulence intensity and shear exponent at low wind  
speeds. We should anticipate that results at low wind speeds will converge more slowly and have greater uncertainty due to  
random errors due to this. At high wind speeds, we see that there are generally fewer samples, which may make convergence  
355 impossible and may also not support a robust bootstrap analysis. It is likely that this inflow data set will be inconclusive for  
results at the turbine's rated condition. Finally, Fig. 4 shows a clear mismatch in the number of available samples from each  
inflow data set at some wind speeds and this will have to be addressed carefully in the analysis.

In the proceeding results, we will consider power, thrust, flap root bending moment, and edge root bending moment. All  
QoIs are averaged from the last 10 minutes of each 700 s simulation and binned in  $0.5 \text{ m s}^{-1}$  wind speed bins for the uncertainty  
360 analyses. Again, IEC standards may require binning on additional parameters, but we are restricting the demonstration to  
binning on wind speed for similitude. Figure 5 shows the raw results from all simulations for our QoIs. Note that results from  
the tip extensions are expected to and do "stack" as they share an inflow data set while results for the control rotor stand out  
including some apparent outliers presumably as a result of its more complete inflow data set. Figure 6 shows the tip speed ratio  
(TSR) and the blade pitch from every simulation to indicate when the control method changes as a function of wind speed,  
365 which will be important to consider in interpreting the data.

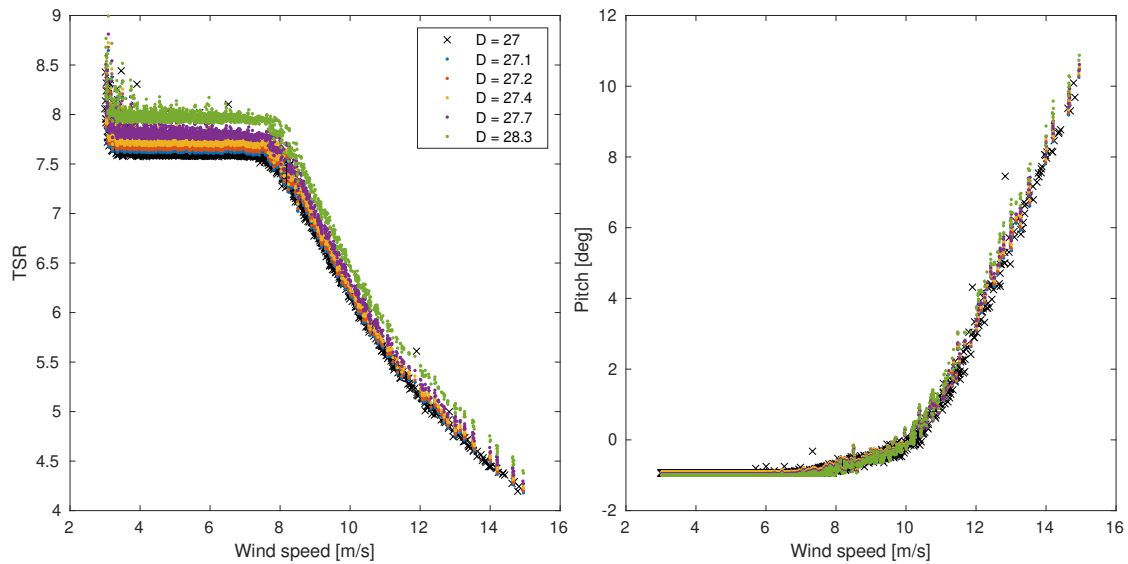
Figure 7 shows the standard deviation of each bin for each QoI normalized by its average (i.e., the relative standard deviation,  
or RSD) and reinforces the predictions made by looking at the inflow parameters. We see that, in general, the RSD is higher at  
lower wind speeds due to the higher variability of inflows at low wind speeds. It is interesting to note that this does not affect  
all QoIs equally, though, as the RSDs for power and edge root bending moment are approximately double that of thrust and  
370 flap root bending moment. Furthermore, the spikes at high wind speeds are likely additional indicators of inadequate numbers  
of sample points such that the distributions are not well represented.

Figure 8 shows the percent relative random error (i.e., the random error of the QoI as a percent of its ensemble mean) using



**Figure 5.** Raw output data from all simulations for each of the QoI to be considered.

the bootstrap analysis (with no minimum sample number applied yet) for each QoI in each wind speed bin for all rotors. The differences between the control and treatments are primarily a result of the different numbers of samples in each bin from their  
 375 different inflow data sets. As predicted based on the inflow data, the uncertainties at lower wind speeds are the highest due to the higher variation in conditions when only binning on wind speed. We also see how the observations made regarding Fig. 7 propagated through to higher uncertainties in power and edge root bending moment at low wind speeds than for thrust and flap root bending moment. Again, results in the highest five wind speed bins should be interpreted cautiously as there are possibly too few samples in these bins to make conclusions. Finally, the increase at  $8 \text{ m s}^{-1}$  is due to the control actions as this marks the  
 380 beginning of region 2.5 for all rotors. As the raw data in Fig. 5 are smooth across this transition, it is a result of the binning that



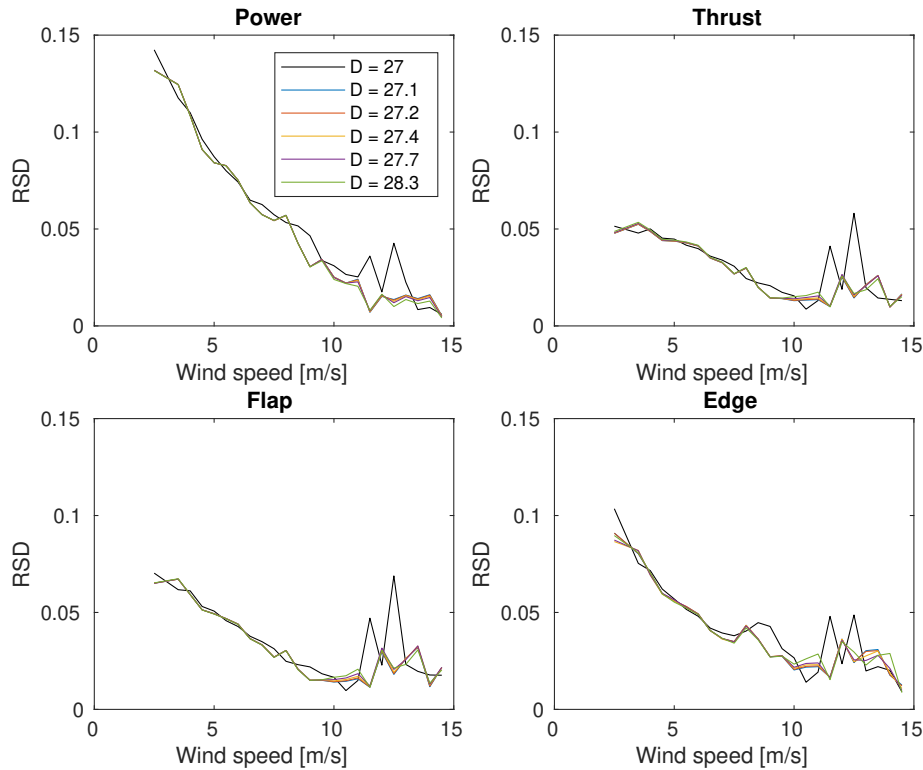
**Figure 6.** Raw output data from of the tip speed ratio (TSR) and blade pitch. Note the change in controls at  $8 \text{ m s}^{-1}$  and at about  $11 \text{ m s}^{-1}$

additional variance is highlighted due to the change in controls. This is also evident to a lesser extent in Fig. 7. This highlights another important consideration in wind turbine field experiments, namely that conditions that trigger a change in control may produce increased variability in some QoIs and therefore require additional measurements to converge and produce significant results after binning.

385 Recall that the real goal of this virtual experiment is to determine the measurement and experiment durations required for converged and significant differences, though care must be taken here on several points. First, the METa1 and METb1 data sets do not have the same number of samples in each wind speed bin. To calculate the running uncertainty in differences between the control and treatments, the running mean of the control QoI is subtracted from the running mean of each treatment QoI for each wind speed bin as long as samples remain in both data sets. When one reaches its last sample (i.e., the ensemble mean  
390 for that bin), that value is held and the subtraction proceeds until the other has used all of its samples. In a similar manner, the individual uncertainties associated with the control and treatments are added in quadrature for a given pair to produce a running uncertainty interval on the running difference. Having now defined the running difference and uncertainty intervals for each combination of the control and a treatment, the data are easily filtered to find the sample at which a significant difference is achieved (i.e., zero is no longer within the uncertainty interval) and remains true. Herein, we have arbitrarily chosen to use a  
395 95% confidence interval. The results of this step are shown in Fig. 9 just for the differences in power.

Mathematically, the data in a bin may become and remain significant with only one sample, which suggests an additional need for a convergence criterion, which is separately implemented. Here, it is required that the running mean of the difference in a QoI between the control and a treatment be less than and remain less than 2% of the ensemble mean in each bin. Because

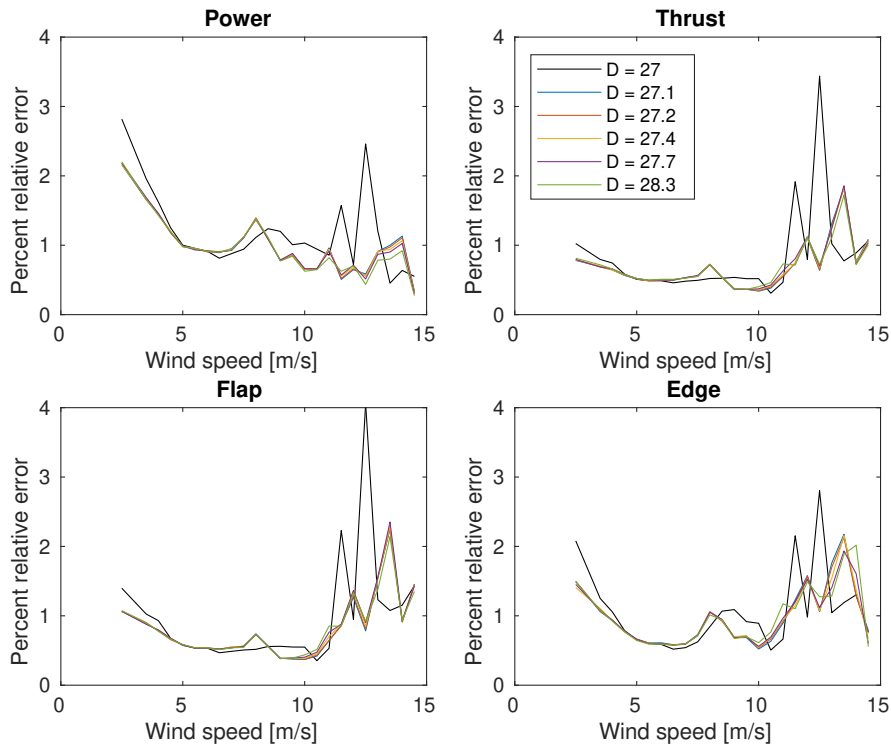




**Figure 7.** The standard deviation of each QoI in each wind speed bin normalized by the average of the same, or relative standard deviation (RSD).

all bins will, by definition, converge to zero difference between the running and ensemble means, this standard is further  
 400 required for two consecutive samples not including the last sample (when this difference is always zero). This has the effect  
 of putting a restriction on the rate of convergence. The standard for convergence is somewhat arbitrary. Here, 2% was chosen  
 as it is approximately the average percent relative error (see Fig. 8,) so further convergence likely remains within uncertainty.  
 An example of the convergence of the difference in power is plotted in Fig. 10. Having marked at which sample number (the  
 405 samples remain in order of time throughout) the data are converged and at which a significant difference is achieved, the greater  
 of those two is taken as the minimum required number of samples in a wind speed bin for a given QoI for a given treatment.

Next, the data are filtered to ensure that each bin has a minimum number of samples for a robust bootstrap analysis as  
 discussed earlier. Given that this data set is somewhat bimodal both in its inputs (the variability in inflow as shown in Fig. 3 is  
 much higher below about  $9 \text{ m s}^{-1}$ ) and in its outputs (the turbine controller switches at  $8 \text{ m s}^{-1}$  to region 2.5 controls), we use  
 the  $9 \text{ m s}^{-1}$  bin as a dividing line between two minima. For all bins below  $9 \text{ m s}^{-1}$ , we require at least 25 samples due to the  
 410 high variance in inflow conditions. For bins higher than and including  $9 \text{ m s}^{-1}$ , we require only 8 samples as the variability is

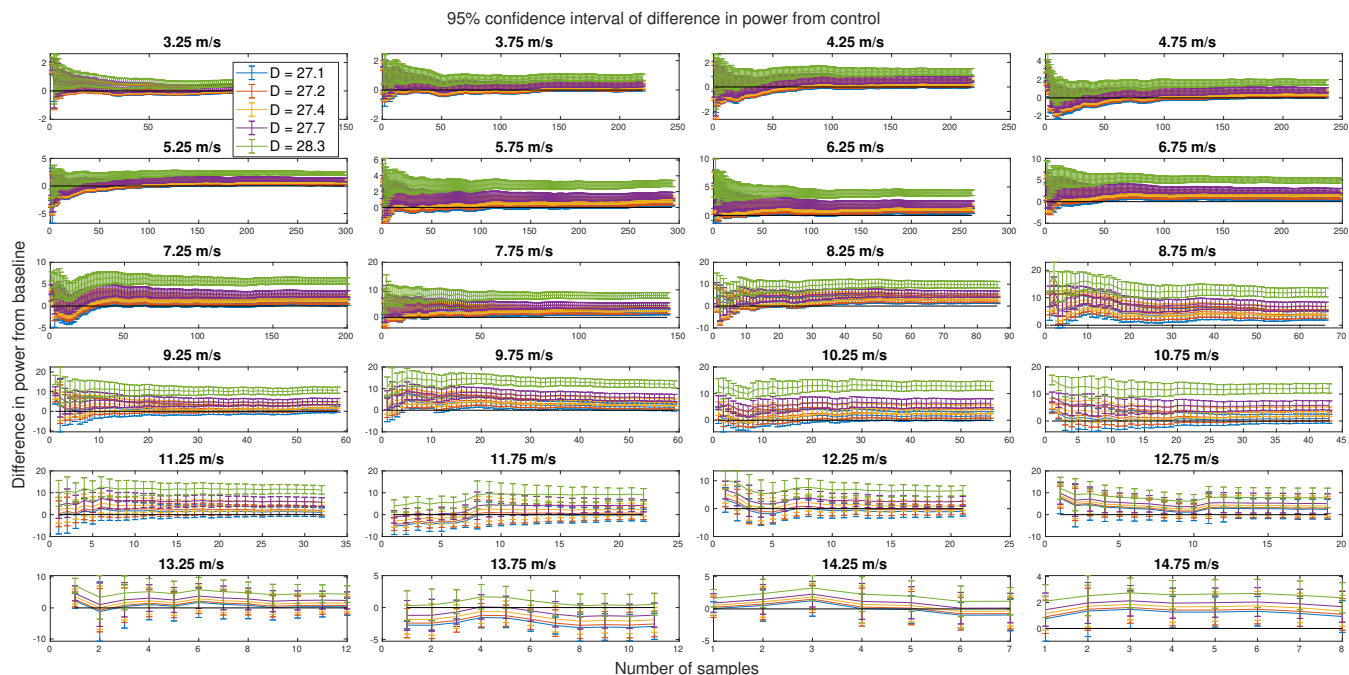


**Figure 8.** The percent relative error (i.e., the error of the QoI as a percent of its ensemble mean) of each QoI calculated for each wind speed bin using all available samples.

markedly reduced at high wind speeds (Jenkins and Quintana-Ascencio, 2020).

The final step is to use the timestamps from the original met tower data to convert samples marked as having met all criteria into measurement and experiment durations required relative to the start of the experiment. Here, one final check is required to ensure accurate results. Because the inflow data are taken from multiple years and are in 10-minute bins, it is possible that some samples are coincident when ignoring years (i.e., they have the same date and time). If not addressed, this would lead to undercounting of the durations based on timestamps. To prevent this, a final correction is made such that, if the time required to meet all criteria is less than the number of samples to meet all criteria times 10 minutes per sample, then the latter is taken as the time to meet all criteria.

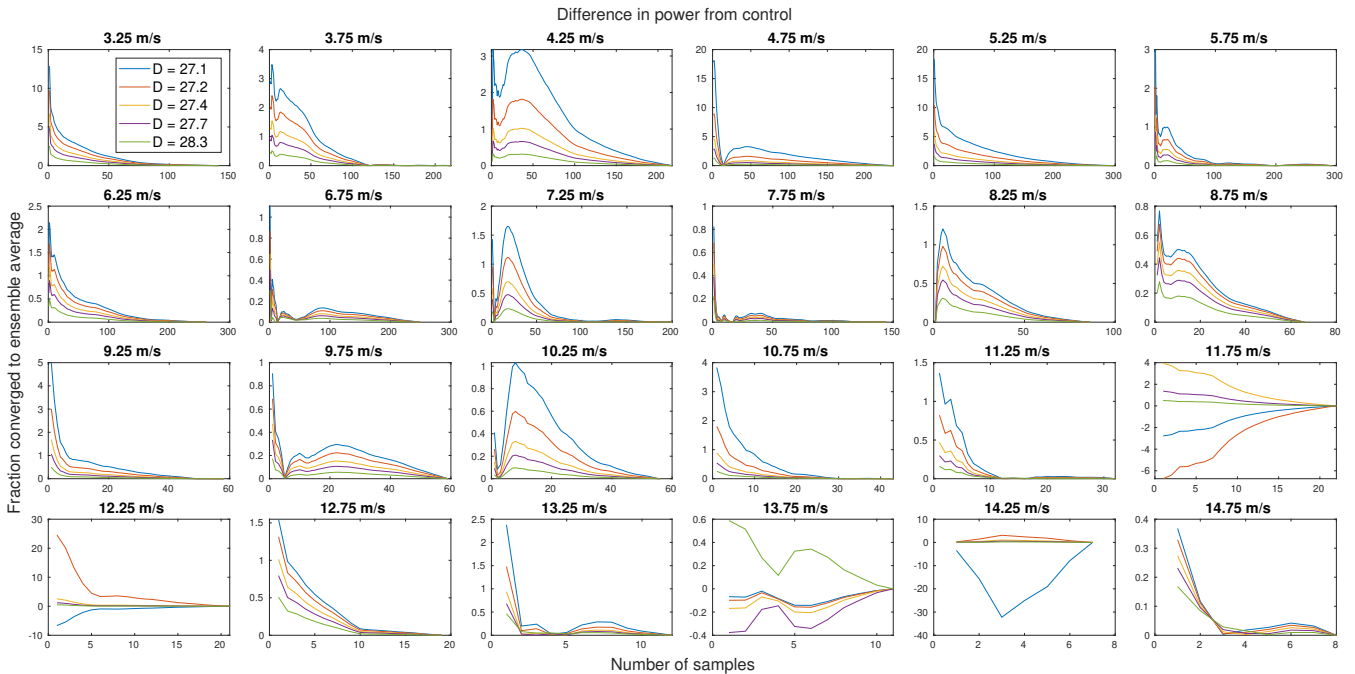
Figures 11-14 show the final results of this virtual experiment. In all plots, a scale of time shows the number of experiment (not measurement) hours required for each treatment to produce a significant and converged difference over the control and are binned by wind speed. The durations plotted in these figures are from the beginning of the experiment and include all time (i.e., not just the time during which measurements were being recorded) such that they provide the total duration required including time simply spent waiting for the conditions necessary to fill out a particular bin. In other words, in this virtual experiment,



**Figure 9.** Error bars on the running difference in power for each treatment rotor from the control in each wind speed bin. The black line marks zero to more clearly tell when differences are significant.

the turbines are only operated during weekday working hours, so approximately 80% of each week is not included in the measurements, which requires more total days of operating to provide enough data to meet the criteria for convergence and significance in each bin. In this experiment, the maximum possible duration, including times we filtered out (e.g., outside of working hours), is about 2,184 hours. This highlights one of the main challenges of field experiments: we do not control the wind! Much, if not most, of the duration required to produce converged and significant results is, in essence, time spent waiting for the right conditions especially if you are not always operating and measuring.

Some general trends are observable in all QoIs. First, we see that it is more likely for a treatment to pass all criteria in the middle wind speeds than at low wind speeds and especially at high wind speeds. At low wind speeds, though there may be many samples, the high variance of the inflow makes it more difficult for results to converge. At high wind speeds, however, there are two possible reasons that few rotors meet the criteria: There are simply are not many samples in these bins, and, in region 3, the differences in power are reduced so significance becomes more challenging. In these bins, this method is somewhat inconclusive as we cannot say how many more samples would be required to pass all criteria; we can only say that there were not enough for this analysis. Second, for almost all QoIs, rotors, and wind speed bins, it is convergence and not significance that dictates the minimum required time. In other words, the rate at which convergence is achieved is slower than the rate at which significance is achieved. In fact, it is almost exclusively the smallest three rotors for which significance ever dictates the minimum time. It is precisely because these rotors produce smaller differences that they converge before they

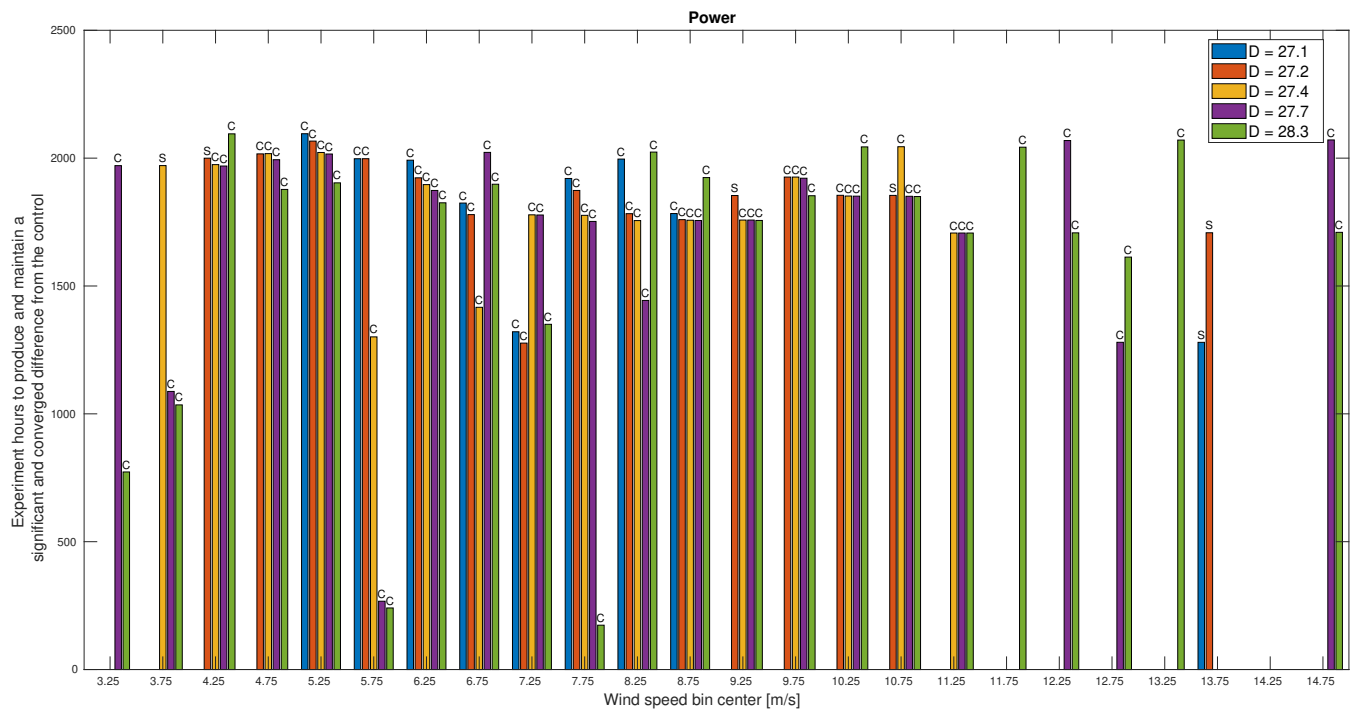


**Figure 10.** The convergence of the difference in power of each treatment rotor from the control for each wind speed bin.

440 become significant. Similarly, for most QoIs and bins, the largest rotor requires less time to meet all criteria. As convergence is primarily a function of inflow conditions, this can be attributed to the larger rotor producing larger differences and thereby reaching significant differences with fewer samples.

Across all QoIs, however, there are several wind speed bins that do not follow the pattern we might expect that, generally speaking, the larger rotors would produce larger differences from the baseline and so require shorter durations to measure. 445 Though the rotors were only designed based on an expected difference in power, it follows that we would expect proportional changes in thrust and flap and edge root bending moments. The one pattern that does emerge is which wind speed bins do not adhere to this expectation. Across these four QoIs, the bins centered on 6.75, 8.25, and 10.25  $\text{m s}^{-1}$  exhibit orders of decreasing time per rotor other than smallest rotor to largest, though not necessarily the same order for different QoIs. Similarly, the bins centered on 3.25, 4.25, and 8.75  $\text{m s}^{-1}$  also do not adhere to this expectation for three of the four QoIs. These six wind speeds 450 correspond approximately to transitions in the turbine controls specifically cut-in, region 2.5, and region 3 (see Fig. 6) and also correspond to apparent increases in variance as seen in Fig. 8. Similarly, it is controller actions that cause only the smallest two rotors to meet criteria in the bin centered on 13.75  $\text{m s}^{-1}$ . As shown in Fig. 9, the trend in differences in region 3 is generally toward zero, but in this bin, the two smallest rotors cross into a negative difference that becomes significant. This result is likely sensitive to the bin width.

455 A few specific results require further attention. First, in Fig. 11, we see that, for most rotors and most wind speeds, we can expect to need to run the experiment for over 1,500 hours when only measuring during weekday working hours to produce any

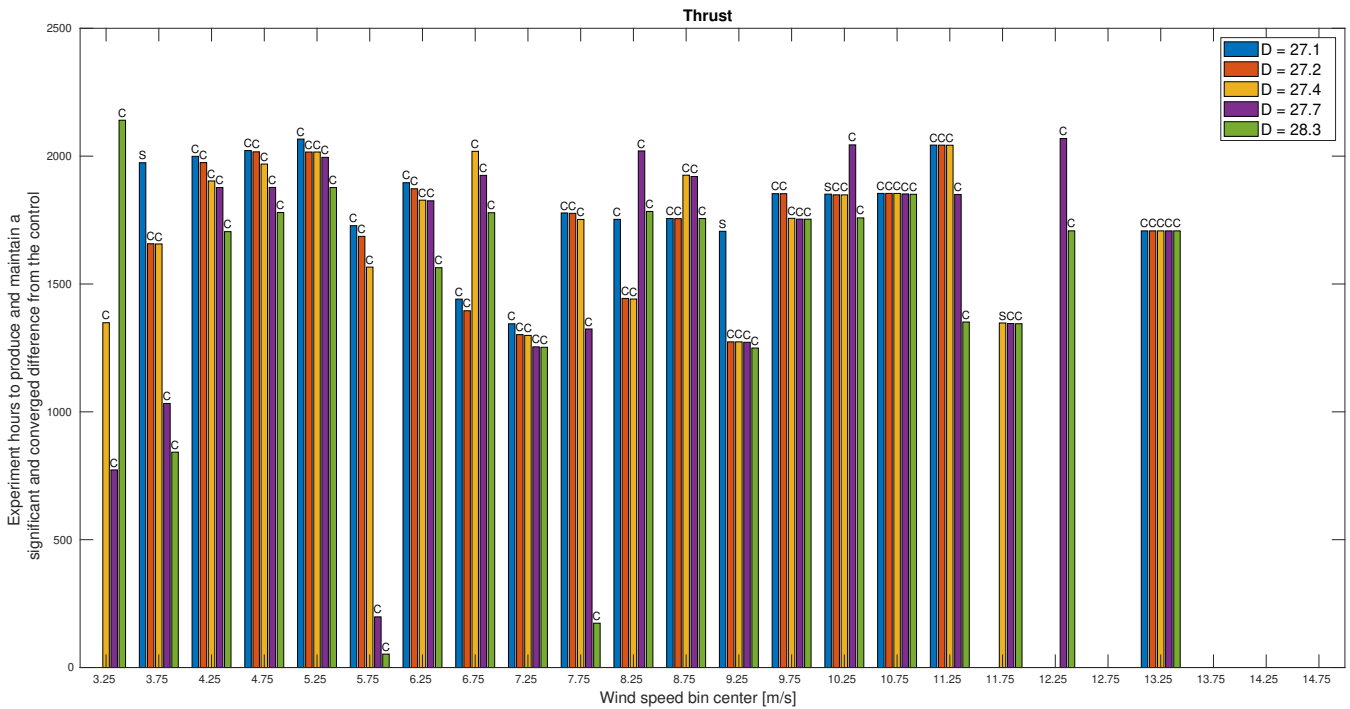


**Figure 11.** The minimum experiment duration required to produce a significant and converged difference in power between the control and treatments. Whether the minimum time was dictated by convergence (C) or significance (S) is indicated above each bar. Missing bars indicate that a significant and converged difference was not achieved within the simulated experiment time.

significant and converged results and possibly over 2,000 hours for the smaller rotors. The result for thrust in Fig. 12 paints a similar picture, though the time required for a smaller rotor is shorter than for power at most wind speeds and more rotors in more bins meet both criteria. It also appears that, in the case of thrust, there may be a more uniform minimum time across rotor sizes as we see smaller differences in the times required per rotor especially at higher wind speeds.

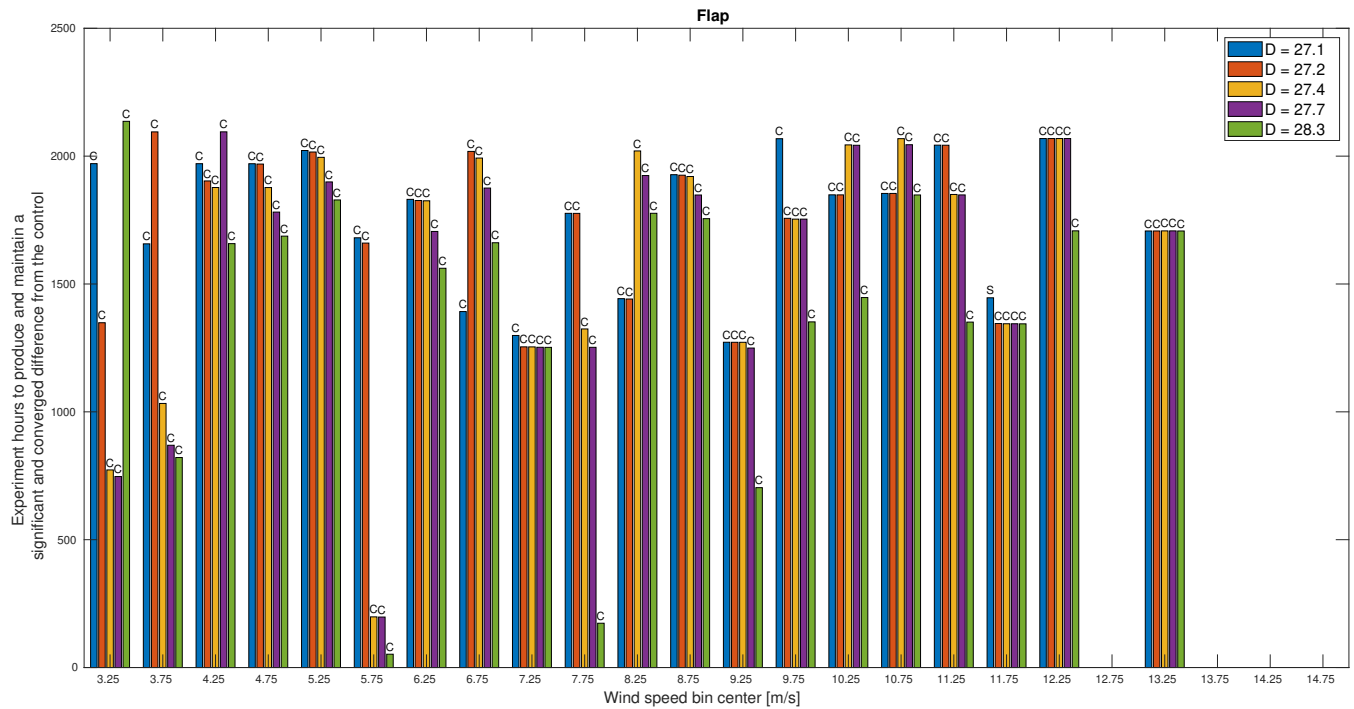
In Fig. 13, it appears that flap root bending moment requires similar measurement times as the other QoIs and also appears to have minimum thresholds in the middle and higher wind speeds such that larger rotors require the same amount of time as smaller ones. Finally, in Fig. 14, it is clear that the edge root bending moment is a challenging measurement as many entire bins as well as the smaller rotors in many other bins, in particular higher wind speeds, do not meet the criteria within the total simulated experiment time. A particular challenge of the edge root bending moment is the reversal in trend by rotor size at around  $12 \text{ m s}^{-1}$  as seen in Fig. 5, which will reduce differences in this and perhaps neighboring bins. For both flap and edge moments, we would frequently be interested in capturing the peak loading condition at around  $11 \text{ m s}^{-1}$  (see Fig. 5). Despite exhibiting the largest differences among rotors at this peak, this would be a challenging measurement to capture in this experiment simply because these wind speeds do not occur as often as lower ones.

To further emphasize the difference in the minimum experiment duration and the minimum measurement duration, Fig. 15



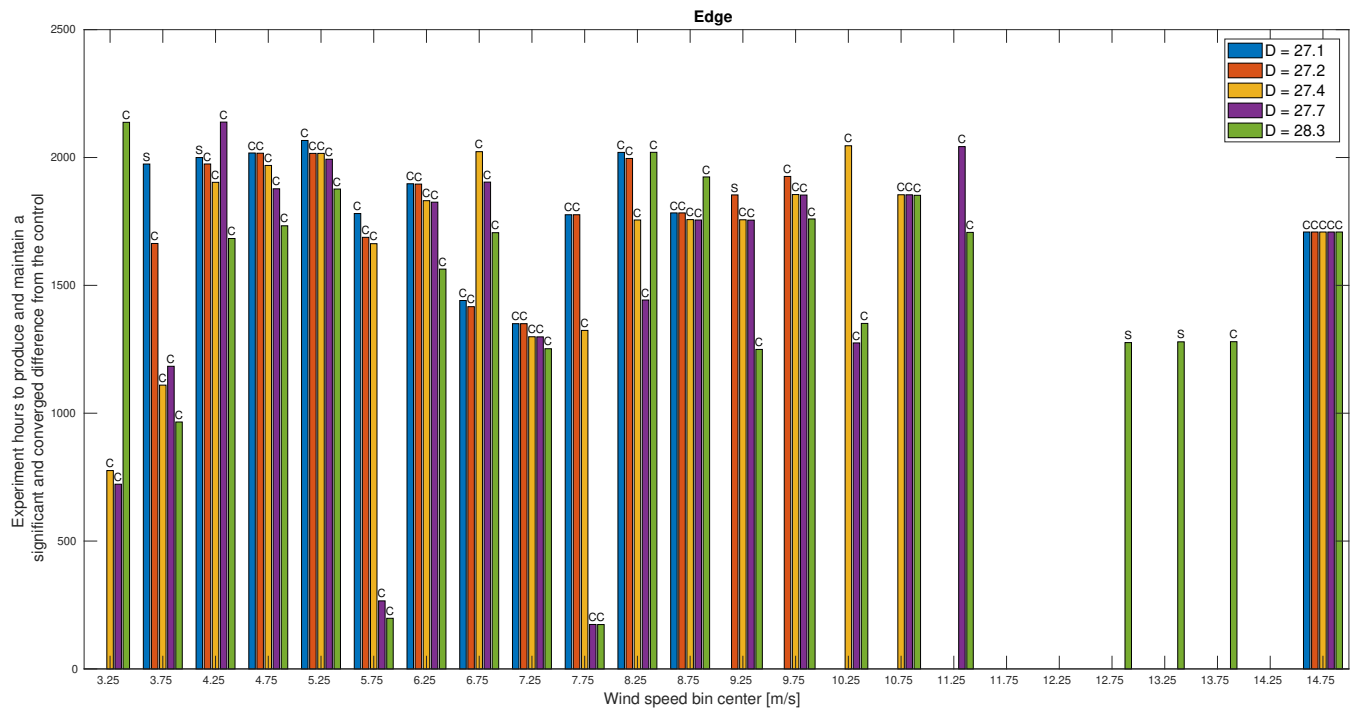
**Figure 12.** The minimum experiment duration required to produce a significant and converged difference in thrust between the control and treatments. Whether the minimum time was dictated by convergence (C) or significance (S) is indicated above each bar. Missing bars indicate that a significant and converged difference was not achieved within the simulated experiment time.

shows the minimum measurement time for each treatment rotor to reach a significant and converged difference in power from the control rotor by simply converting the number of samples required into the equivalent amount of time. Note the difference in scale from the experiment time. All bins that achieve a significant and converged difference from the control do so in fewer than 50 hours of measurements. This time, however, is spread across the entire experiment duration in some cases. The general trend remains the same, namely that the smaller rotors require more time (which is equivalent to number of samples here). However, plotting the measurement as opposed to the experiment duration reverses the trend relative to the distribution of wind speeds (Fig. 4). For experiment duration, the more frequent wind speeds typically increased the likelihood of reaching a converged and significant result and thereby reduced the time required, whereas, for measurement duration, we see the opposite. This comes from the interplay of the variance exhibited in the inflow as a function of wind speed (Fig. 3) and the frequency of, or number of samples in, a wind speed bin (Fig. 4). The variance in a bin has the same effect on both experiment and measurement duration such that higher variance increases the challenge of achieving convergence and significance. The frequency of, or number of samples in, a wind speed bin requires a more subtle interpretation. For both experiment and measurement duration, the number of samples acts as a threshold to whether or not there is sufficient data for convergence and significance. For the experiment duration, however, it must also be thought of as a frequency of occurrence such that more frequent conditions are more likely to



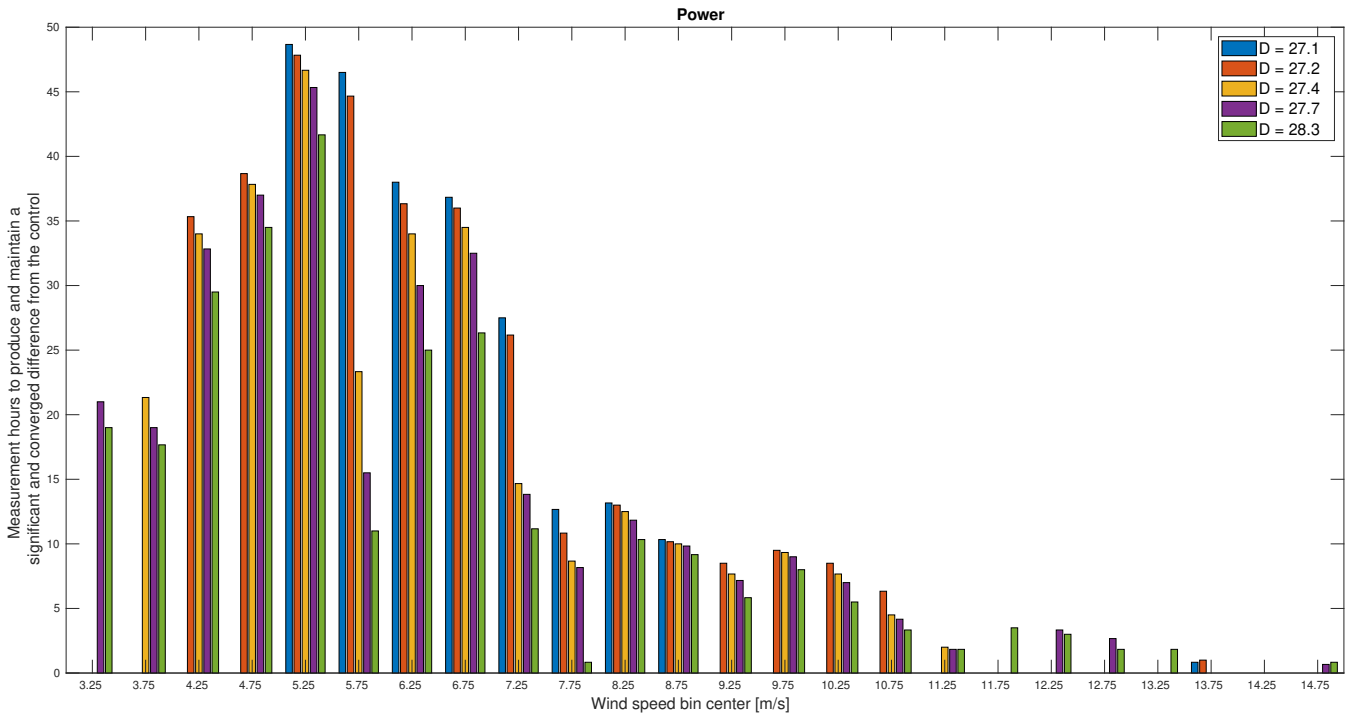
**Figure 13.** The minimum experiment duration required to produce a significant and converged difference in flap root bending moment between the control and treatments. Whether the minimum time was dictated by convergence (C) or significance (S) is indicated above each bar. Missing bars indicate that a significant and converged difference was not achieved within the simulated experiment time.

485 reach convergence and significance within the experiment duration, whereas, for measurement duration, when the samples are collected is irrelevant and it only matters that there are enough of them. Considering the variance and the number of samples in a bin, we see that the lowest wind speeds have much higher variance in TI and shear and they also have relatively fewer samples. That is reflected in Fig. 15 in that the smaller rotors do not have sufficient measurement time to reach convergence and significance with such high variance at the lowest wind speeds. Then, as wind speed increases, variance decreases, and  
 490 the number of samples increases, additional rotors meet the criteria until the measurement duration required peaks at around  $5.5 \text{ m s}^{-1}$ . As wind speed increases further, the variance in conditions slowly decreases and so does the measurement duration required. At the highest wind speeds, there are too few samples over the duration of the experiment for most rotors to meet the criteria.



**Figure 14.** The minimum experiment duration required to produce a significant and converged difference in edge root bending moment between the control and treatments. Whether the minimum time was dictated by convergence (C) or significance (S) is indicated above each bar. Missing bars indicate that a significant and converged difference was not achieved within the simulated experiment time.



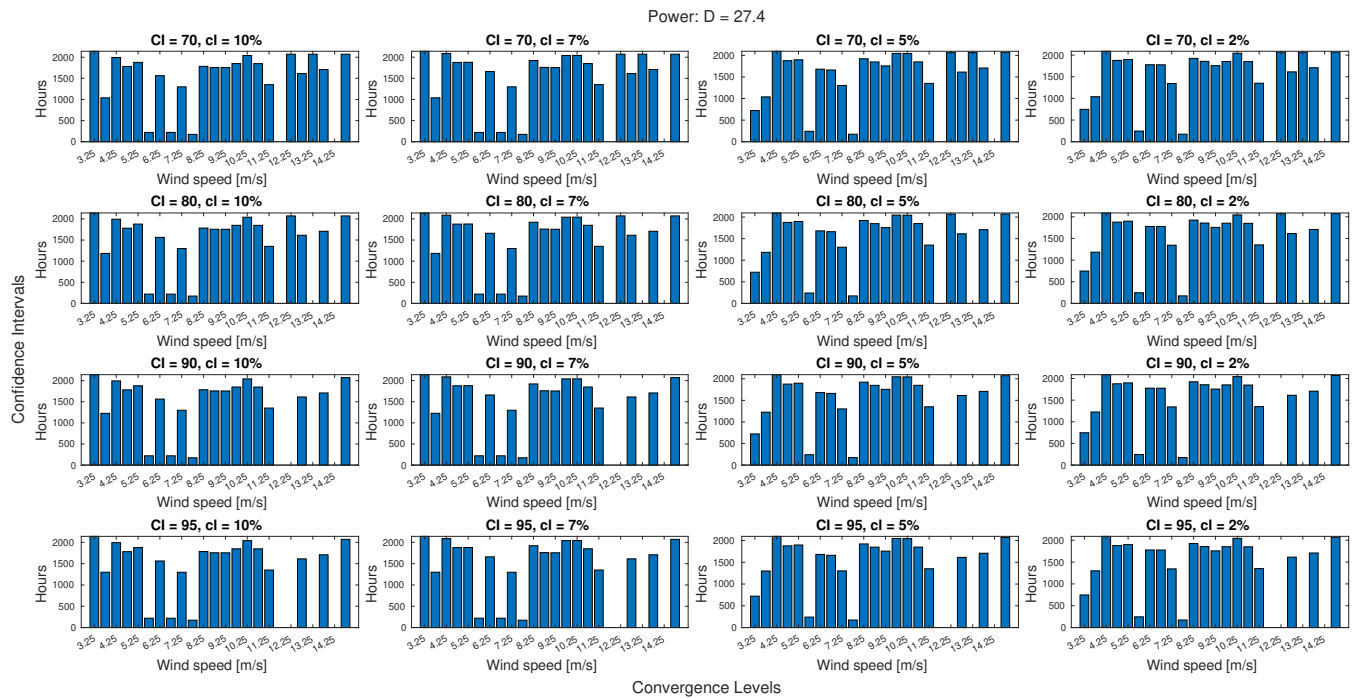


**Figure 15.** The minimum measurement duration required to produce a significant and converged difference in power between the control and treatments.

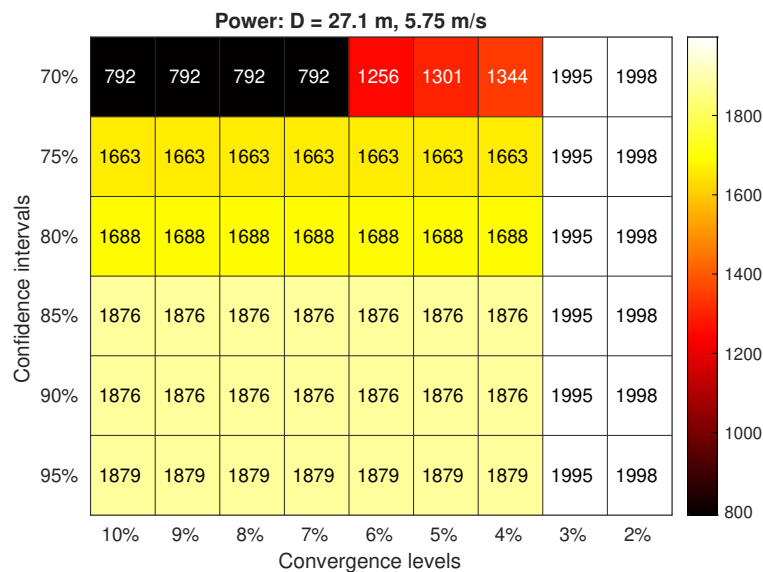
### 3.5 Discussion of the Case Study

495 As presented in this virtual experiment, this method would allow the experimenter to plan an experiment with an expected  
difference in power from the control and to know the minimum measurement and experiment durations required to ensure  
significant and converged results within the standards used, namely a 95% confidence interval and convergence within 2% of  
the ensemble mean within each bin. For wind speed bins that did not have enough data to meet these criteria, additional time  
could be simulated to find the minimum. It is worth noting, however, that another approach could easily be taken within the  
500 same method. As it is frequently the case that time, funding, and/or equipment are restricted when planning an experiment, an  
experimenter may be interested to know what levels of significance and convergence could be achieved within a fixed experi-  
ment duration. In this case, the post-processing steps could add confidence interval and convergence level as parameters over  
which to view the results within a fixed duration and thereby determine what could be achieved in this duration as opposed to  
the duration required to achieve given standards. An example of this can be seen in Fig. 16, which shows how the minimum  
505 experiment duration required changes as a function of confidence interval and convergence level. Since many bins are near the  
total experiment duration simulated with the most lenient standards, a stricter confidence interval can cause some of these bins  
to no longer meet the criteria (e.g., the bin centered on  $12.25 \text{ m s}^{-1}$ ). A stricter convergence level, however, tends to just require  
a little more time. Many of the changes across confidence interval and/or convergence level are fairly small and difficult to  
discern as they amount to the addition of just a few samples. Figure 17 makes this clearer by showing just one wind speed and  
510 rotor across a larger set of confidence intervals and convergence levels.

Finally, it should be emphasized that some of the trends observed in this virtual experiment may not be found in other  
experiments. The specific trends identified are possibly, and even likely, specific to the experiment. One additional, though  
unconfirmed, possibility of this method is, however, the ability to simulate a surrogate for a more complex experiment. For  
example, this methodology development was originally motivated by the additively manufactured, system integrated tip (AM-  
515 SIT) project. In AMSIT, the tips of traditional blades will be replaced by additively manufactured tips with a winglet and  
aerodynamic surface texturing (Maniaci et al., 2023), but there was insufficient data available in literature to say with confi-  
dence if OpenFAST could simulate the extreme curvature of the winglet or if we could represent the effects of aerodynamic  
surface texturing through alterations to the airfoil polars. In lieu of these changes, we opted to simply increase the area of the  
existing rotor through tip extensions to parameterize results by the expected change in power. It remains to be seen if this yields  
520 a comparable result to having simulated the proposed AMSIT rotor. Similarly, blades or controls could be altered in other ways  
to influence other QoIs or inflows prescribed to determine the effects of specific conditions.



**Figure 16.** An array of plots showing how the experiment duration required to measure a significant and converged difference in power for one particular treatment rotor changes as the confidence interval (CI) and convergence level (cl) change.



**Figure 17.** A heatmap showing the experiment duration required to reach a significant difference in power for one particular treatment rotor and one wind speed as a function of the confidence interval and convergence level.

## 4 Conclusions

A method to aid in predicting and potentially reducing experiment uncertainties, especially in the case of field experiments, has been presented. The method requires inflow data either in the form of historical data from the experiment site or probabilistic distributions and a simulation method that balances fidelity with computational time. By running many simulations that represent the proposed experiment and performing uncertainty analyses on the results, an experimenter can better estimate the measurement duration required to produce converged and significant results and the experiment duration required to achieve this. Additionally, the simulated data can be used to try different analysis methods such as binning procedures or turbine control switching to further estimate their effects on uncertainty and required durations.

To demonstrate this method, an experiment was imagined in which five tip extensions were compared to a control rotor in measurements simulated over a three month period. Power, thrust, and flap and edge root bending moments were compared. Even before looking at the simulation outputs, general trends were predicted based on the experiment set up and inflow conditions. Namely, as predicted, the larger rotors generally required less data, and so typically less time, to produce significant results because they produce larger differences that can tolerate larger uncertainties. From the inflow conditions, it was correctly predicted that having more data in a bin would allow for QoIs to converge and reach significant differences in less time. Additionally, we correctly predicted that the high variance in conditions at low wind speeds and the lower sample counts at high wind speeds would make it more challenging to produce converged and significant results at those wind speeds.

In analyzing the final data produced from the simulations, we found that all QoIs investigated generally required similar experiment durations, though the edge root bending moment was especially challenging to capture at high wind speeds. The experiment duration required for the majority of results was dictated by convergence, not significance, except in the case of the smallest rotors for which significance was the more challenging criteria. It was observed that the wind speeds at which the turbine controls change their operation can be especially challenging as this can lead to increased variance in the QoI after binning. It is possible that non-uniform binning would improve results around these wind speeds by widening some wind speed bins. Finally, the minimum required experiment duration was compared to the minimum required measurement duration to emphasize that, when measurements are not being continuously recorded, a significant portion of the time required to achieve significant and converged results is essentially time spent waiting for the necessary conditions. Discontinuous measurements increase the experiment time required to have enough samples in each bin to ensure significance and convergence are achieved.

In closing, we emphasize again that this method is highly adaptable. While we focused on the challenges of field experiments, this could also be used for a suite of wind tunnel measurements or simulations. It is, in fact, generalizable beyond wind energy as long as the experimenter has a good understanding of how to simulate the experiment and the parameters that will have the greatest effects on the measurements.

*Data availability.* Data may be available upon request.

555 *Author contributions.* DH was responsible for conceptualization, methodology, investigation, formal analysis, original draft preparation, and review and editing; ND was responsible for methodology, software, and review and editing; DM was responsible for conceptualization and supervision; and BH was responsible for funding acquisition, project management, supervision, and review and editing.

*Competing interests.* The authors declare that they have no conflict of interest.

560 *Disclaimer.* This article has been authored by an employee of National Technology & Engineering Solutions of Sandia, LLC under Contract No. DE-NA0003525 with the U.S. Department of Energy (DOE). The employee owns all right, title and interest in and to the article and is solely responsible for its contents. The United States Government retains and the publisher, by accepting the article for publication, acknowledges that the United States Government retains a non-exclusive, paid-up, irrevocable, world-wide license to publish or reproduce the published form of this article or allow others to do so, for United States Government purposes. The DOE will provide public access to these results of federally sponsored research in accordance with the DOE Public Access Plan <https://www.energy.gov/downloads/doe-public-access-plan>.

565 *Acknowledgements.* This work was completed as part of the Additive-Manufactured, System-Integrated Tip (AMSIT) wind turbine blade project, funded by the U.S. Department of Energy Advanced Manufacturing and Materials Technologies Office (AMMTO).

## References

- Bak, C., Skrzypiński, W., Gaunaa, M., Villanueva, H., Brønnum, N. F., and Kruse, E. K.: Full scale wind turbine test of vortex generators mounted on the entire blade, *Journal of Physics: Conference Series*, 753, <https://doi.org/10.1088/1742-6596/753/2/022001>, 2016.
- 570 Belu, R.: Effects of Complex Wind Regimes and Meteorological Parameters on Wind Turbine Performances, *IEEE Xplore*, 2012.
- Berg, J., Bryant, J., Leblanc, B., Maniaci, D., Naughton, B., Paquette, J., Resor, B., White, J., and Kroeker, D.: Scaled Wind Farm Technology Facility Overview, *Tech. rep.*, 2013.
- Cassamo, N.: Active Wake Control Validation Methodology, *Tech. rep.*, TNO, 2022.
- Castaignet, D., Wedel-Heinen, J. J., Kim, T., Buhl, T., and Poulsen, N. K.: Results from the first full scale wind turbine equipped with trailing edge flaps, *28th AIAA Applied Aerodynamics Conference*, 1, <https://doi.org/10.2514/6.2010-4407>, 2010.
- 575 Couchman, I., Castaignet, D., Poulsen, N. K., Buhl, T., Wedel-Heinen, J. J., and Olesen, N. A.: Active load reduction by means of trailing edge flaps on a wind turbine blade, *Proceedings of the American Control Conference*, <https://doi.org/10.1109/ACC.2014.6859046>, 2014.
- Doekemeijer, B. M., Kern, S., Maturu, S., Kanev, S., Salbert, B., Schreiber, J., Campagnolo, F., Bottasso, C. L., Schuler, S., Wilts, F., Neumann, T., Potenza, G., Calabretta, F., Fioretti, F., and van Wingerden, J.-W.: Field experiment for open-loop yaw-based wake steering at a commercial onshore wind farm in Italy, *Wind Energy Science Discussions*, 6, 1–22, <https://doi.org/10.5194/wes-2020-80>, 2020.
- 580 Efron, B. and Tibshirani, R.: Bootstrap Methods for Standard Errors, Confidence Intervals, and Other Measures of Statistical Accuracy, *Statistical Science*, 1, <https://doi.org/10.1214/ss/1177013817>, 1986.
- Fleming, P., King, J., Dykes, K., Simley, E., Roadman, J., Scholbrock, A., Murphy, P., Lundquist, J. K., Moriarty, P., Fleming, K., van Dam, J., Bay, C., Mudafort, R., Lopez, H., Skopek, J., Scott, M., Ryan, B., Guernsey, C., Brake, D., Dam, J. V., Bay, C., Mudafort, R., Lopez, H., Skopek, J., Scott, M., Ryan, B., and Brake, D.: Initial Results From a Field Campaign of Wake Steering Applied at a Commercial Wind Farm : Part 1, *Wind Energy Science*, 4, 273–285, <https://doi.org/10.5194/wes-4-273-2019>, 2019.
- 585 Gomez Gonzalez, A., Enevoldsen, P. B., Barlas, A., and Madsen, H. A.: Field test of an active flap system on a full-scale wind turbine, *Wind Energy Science*, 6, <https://doi.org/10.5194/wes-6-33-2021>, 2021.
- Herges, T. G., Maniaci, D. C., Naughton, B. T., Mikkelsen, T., and Sjöholm, M.: High resolution wind turbine wake measurements with a scanning lidar, *Journal of Physics: Conference Series*, 854, <https://doi.org/10.1088/1742-6596/854/1/012021>, 2017.
- 590 Hesterberg, T. C.: What Teachers Should Know About the Bootstrap: Resampling in the Undergraduate Statistics Curriculum, *arXiv*, <https://doi.org/10.1080/00031305.2015.1089789>, 2014.
- Howland, M. F., Quesada, J. B. J. B. J. B. J. B., Martinez, J. J. P., Larranaga, F. P., Yadav, N., Chawla, J. S., Sivaram, V., Dabiri, J. O., Martínez, J. J. P., Larrañaga, F. P., Yadav, N., Chawla, J. S., Sivaram, V., and Dabiri, J. O.: Collective wind farm operation based on a predictive model increases utility-scale energy production, *Nature Energy*, 7, 818–827, <https://doi.org/10.1038/s41560-022-01085-8>, 2022.
- 595 IEC: Wind energy generation systems - Part 12-1: Power performance measurements of electricity producing wind turbines, *Tech. rep.*, 2017.
- IEC: Wind turbines - Part 13: Measurement of mechanical loads, vol. 1.1, 2021.
- JCGM100:2008: Evaluation of measurement data — Guide to the expression of uncertainty in measurement, *International Organization for Standardization Geneva ISBN*, 50, 134, <https://doi.org/10.1373/clinchem.2003.030528>, 2008.
- 600 Jenkins, D. G. and Quintana-Ascencio, P. F.: A solution to minimum sample size for regressions, *PLoS ONE*, 15, <https://doi.org/10.1371/journal.pone.0229345>, 2020.
- Jonkman, B. J. and Buhl, M. L.: *TurbSim User’s Guide*, *Tech. rep.*, 2006.

- Kelley, C. L. and Ennis, B. L.: SWiFT site atmospheric characterization, Tech. rep., <https://doi.org/10.2172/1237403>, 2016.
- 605 Kelley, C. L., Doubrawa, P., and Naughton, J. W.: Rotor, Aeroelastics, Aerodynamics, and Wake (RAAW) Project, <https://doi.org/https://doi.org/10.21947/RAAW/1984650>, 2023.
- Lange, M., Waldl, H.-p., and Oldenburg, D.: Assessing the Uncertainty of Wind Power Predictions, Proceedings of the European Wind Energy Conference, 2001.
- Letizia, S., Bodini, N., Brugger, P., Scholbrock, A., Hamilton, N., Porte-Agel, F., Doubrawa, P., and Moriarty, P.: Holistic scan optimization  
610 of nacelle-mounted lidars for inflow and wake characterization at the RAAW and AWAKEN field campaigns, in: Journal of Physics: Conference Series, <https://doi.org/10.1088/1742-6596/2505/1/012048>, 2023.
- Liew, J. and Larsen, G. C.: How does the quantity, resolution, and scaling of turbulence boxes affect aeroelastic simulation convergence?, Journal of Physics: Conference Series, 2265, <https://doi.org/10.1088/1742-6596/2265/3/032049>, 2022.
- Maniaci, D. C., Westergaard, C., Hsieh, A., and Paquette, J. A.: Uncertainty Quantification of Leading Edge Erosion Impacts on Wind  
615 Turbine Performance, Journal of Physics: Conference Series, 1618, <https://doi.org/10.1088/1742-6596/1618/5/052082>, 2020.
- Maniaci, D. C., Houck, D. R., Cutler, J., and Houchens, B. C.: Winglet Design for a Wind Turbine with an Additively Manufactured Blade Tip, pp. 1–9, <https://doi.org/10.2514/6.2023-0969>, 2023.
- NREL: FLORIS, <https://github.com/NREL/floris>, 2020.
- NREL: ROSCO, <https://zenodo.org/badge/latestdoi/220498357>, 2021.
- 620 NREL: OpenFAST, <https://github.com/OpenFAST/openfast>, 2023.
- Nuzzo, R.: Statistical errors., Nature, 506, <https://doi.org/10.1016/b978-012267351-1/50023-7>, 2014.
- Petrone, G., de Nicola, C., Quagliarella, D., Witteveen, J., and Iaccarino, G.: Wind Turbine Performance Analysis Under Uncertainty, in: 49th AIAA Aerospace Sciences Meeting Including the New Horizons Forum and Aerospace Exposition, January, <https://doi.org/10.2514/6.2011-544>, 2011.
- 625 Rybchuk, A., Martinez-Tossas, L. A., Hamilton, N., Doubrawa, P., Vijayakumar, G., Hassanaly, M., Kuh, M. B., and Zalkind, D. S.: A baseline for ensemble-based, time-resolved inflow reconstruction for a single turbine using large-eddy simulations and latent diffusion models, in: Journal of Physics: Conference Series, <https://doi.org/10.1088/1742-6596/2505/1/012018>, 2023.
- Scholbrock, A., Flemingy, P., Wright, A., Slinger, C., Medley, J., and Harris, M.: Field test results from lidar measured yaw control for improved yaw alignment with the NREL controls advanced research turbine, in: AIAA SciTech 2015, [https://doi.org/10.2514/6.2015-](https://doi.org/10.2514/6.2015-630)  
630 1209, 2015.
- Simley, E., Debnath, M., and Fleming, P.: Investigating the impact of atmospheric conditions on wake-steering performance at a commercial wind plant, Journal of Physics: Conference Series, 2265, 1–11, <https://doi.org/10.1088/1742-6596/2265/3/032097>, 2022.
- Toft, H. S., Svenningsen, L., Sørensen, J. D., Moser, W., and Thøgersen, M. L.: Uncertainty in wind climate parameters and their influence on wind turbine fatigue loads, Renewable Energy, 90, <https://doi.org/10.1016/j.renene.2016.01.010>, 2016.
- 635 Wasserstein, R. L. and Lazar, N. A.: The ASA’s Statement on p-Values: Context, Process, and Purpose, American Statistician, 70, 129–133, <https://doi.org/10.1080/00031305.2016.1154108>, 2016.