

# Assessing the impact of waves and platform dynamics on floating wind turbine energy production

Alessandro Fontanella<sup>1</sup>, Giorgio Colpani<sup>1</sup>, Marco De Pascali<sup>1</sup>, Sara Muggiasca<sup>1</sup>, and Marco Belloli<sup>1</sup>

<sup>1</sup>Mechanical Engineering Department, Politecnico di Milano, Milano, Via La Masa 1, 20156, Italy.

**Correspondence:** Alessandro Fontanella (alessandro.fontanella@polimi.it)

**Abstract.** Waves have the potential to increase the power output of a floating wind turbine forcing its rotor to move against wind. Starting from this observation, we use four multi-physics models of increasing complexity to investigate the role of waves and platform movements in the energy conversion process of four floating wind turbines of 5-15 MW in the Mediterranean Sea. Progressively adding realism to our simulations, we show that large along-wind rotor movements are needed to increase the power output of a floating wind turbine, however these are prevented by the current technology of spar and semi-submersible platforms. Wind turbulence is the main cause of power fluctuations of the four floating wind turbines we examined and is preponderant over the effect of platform motions due to waves. In a realistic met-ocean environment, the power curve of the floating wind turbines we ~~analyzed~~ studied is lower than with a fixed foundation, with reductions of the annual energy production of 1.5-2.5%. The lower energy production is mainly ascribed to the platform ~~static tilt~~, mean tilt which reduces the rotor ~~area projection on the vertical plane~~ effective area.

## 1 Introduction

Floating offshore wind turbines (FOWTs) have a high energy generation potential for deep waters. Compared to their bottom-fixed counterparts they can be installed in more sea areas and further away from the coast, where wind generally blows stronger, while reducing the visual impact from shore and interfering less with other users of the marine space. At the time of writing, the cost of energy produced by floating wind turbines is still high, but in the next decades it is expected to drop to the same level of other wind technologies (Wiser et al. (2021)).

One reason for the higher cost is that advantages of floating wind turbines are balanced by higher system complexity compared to bottom-fixed solutions. The primary dissimilarity between the two technologies is the compliance of the floating foundation which allows large-amplitude low-frequency motions of the structure. Due to these motions, the rotor of a floating wind turbine may operate differently than when the tower is fixed to the seabed and it is reasonable to expect this has some effects on power production.

From an energy point of view, waves driving the floater motion introduce additional energy into the wind turbine which can potentially increase power generation. Finding ways to exploit waves energy in floating wind turbines has been identified as one research challenge for the wind energy community (van Kuik et al. (2016)). Few articles exist that study the impact of waves and platform dynamics on the power production of a floating wind turbine. Martini et al. (2016) investigated the effect

of met-ocean conditions on tower inclination and hub acceleration, and the possible consequences on shutdowns and capacity factor. The effect of platform motion on the energy conversion process has been recently approached by Amaral et al. (2022) and Cottura et al. (2022), but both used simplifications, such as prescribed sinusoidal movement of the platform in one direction and steady wind, that make their findings difficult to apply to a real scenario.

30 Knowledge of the influence of waves and platform dynamics on the wind turbine energy production complements results of studies about the effect of wind and atmospheric conditions on the power output of land-based wind turbines. Among these, Clifton et al. (2014) discussed the impact of wind parameters on the performance of a wind turbine installed in a mountain pass with complex inflows, and St. Martin et al. (2016) explored the sensitivity [to atmospheric conditions](#) of the power curve and annual energy production of a 1.5MW wind turbine ~~to atmospheric conditions~~.

35 The fundamental question this article wants to answer is how the peculiar dynamics of floating foundations and wave excitation impact the energy production of a floating wind turbine. When answering this question, we examine four realistic wind turbine concepts of 5-15MW rating with spar and semi-submersible platforms and we consider the environmental conditions of an area in the Mediterranean sea suitable for development of floating wind projects. Four multi-physics models of increasing complexity are used to clarify how physics of the energy conversion process taking place at the rotor of floating wind turbines  
40 is influenced by platform motions and waves. The main contribution of this paper is to show that when considering simplified modeling of a rotor forced to move against the wind, it can have higher average power than when stationary. However, the increase in power is not found under normal operating conditions if a realistic description of platform movements and response to wave excitation is considered.

We expect results and the methodology of this work can be used in the early stage of floating wind projects to quantify  
45 their energy production and reduce investment risk. Better knowledge of the energy conversion process can help optimizing the turbines design for the operating conditions expected at a given sea area, thus lowering their cost.

The structure of the article is as follows. Section 2 presents the four floating wind turbine concepts analyzed in this study, the numerical tools we used to estimate their energy production, the met-ocean conditions considered in the analysis, and the four simulation models. Section 3 reports the results of numerical simulations clarifying the influence of wind turbine control,  
50 platform compliance, dynamic platform motion, stochastic wind and waves on the power production of the four floating wind turbines. The article is concluded in Section 4 explaining possible uses of results obtained in this paper and reporting some suggestions for future work.

## 2 Methodology

A mathematical model is useful to understand the effect of platform motion on the energy production of a floating wind turbine.  
55 The model greatly simplifies the response of a floating wind turbine rotor, which is schematized as a point coincident with the wind turbine hub that moves longitudinally in the wind direction. This model is often used in studies about the aerodynamic response of floating wind turbines, recently by Fontanella et al. (2022) and Cioni et al. (2023). The aerodynamic power of the

rotor is:

$$P_r = \frac{1}{2} \rho C_P \pi R^2 V^3, \quad (1)$$

60 where  $\rho$  is the air density,  $R$  the rotor radius,  $V$  the wind speed on the rotor, and  $C_P$  the power coefficient. Assuming the hub undergoes harmonic motion we can replace the wind speed  $V$  with the apparent wind speed  $V_r$  which is influenced by rotor moving against wind. If the wind field is uniform and steady:

$$V_r(t) = U - \omega_m A_{m,h} \cos(\omega_m t), \quad (2)$$

where  $U$  is the mean wind speed,  $\omega_m$  the motion circular frequency, and  $A_{m,h}$  is the amplitude of the hub motion in the wind direction. The amplitude of the apparent wind speed seen by the hub is  $U_{r,h} = \omega_m A_{m,h}$ . Substituting Eq. 2 into Eq. 1:

$$P_r(t) = \frac{1}{2} \rho C_P \pi R^2 \left( U^3 - 3U^2 U_{r,h} \cos(\omega_m t) + 3U (U_{r,h} \cos(\omega_m t))^2 - (U_{r,h} \cos(\omega_m t))^3 \right). \quad (3)$$

Looking at the four terms inside brackets on the left hand side of Eq. 3 we see that:  $U^3$  is constant in time,  $3U^2 U_{r,h} \cos(\omega_m t)$  has a null integral over one period of motion, the same is true for  $3(U_{r,h} \cos(\omega_m t))^2$ , but not for  $U(U_{r,h} \cos(\omega_m t))^3$ . The mean value of rotor power over one period of motion is evaluated from Eq. 3 and it is:

$$70 \quad \bar{P}_r = \frac{1}{2} \rho C_P \pi R^2 \left( U^3 + \frac{3UU_{r,h}^2}{2} \right). \quad (4)$$

Assuming  $C_P$  is constant in time, Eq. 4 shows that in a rotor undergoing harmonic motion in the wind direction, the average power output increases.

It has to be seen if the increase in power predicted by this simple model translates into higher generated power for a realistic wind turbine when normal operating conditions are considered. In fact, in a floating wind turbine the rotor  $C_P$  is not constant, but it is modified dynamically by the wind turbine controller; the motion of the rotor is not perfectly aligned with the wind, but its direction depends on that of the wind and waves and the characteristics of the platform; motions in different directions (e.g., surge, pitch) can occur simultaneously, they can couple and depending on their respective phases they can display a constructive or destructive interaction.

In this work, we assume the energy production of a floating wind turbine is influenced by:

- 80 – wind, described by mean wind speed, mean direction, turbulence intensity, and vertical shear.
- wave, described by elevation, period, and direction.
- floater characteristics such as restoring, ~~static stability~~ mean tilt, dynamic response to environmental loads.
- turbine control strategy, which is modified to accomodate large low-frequency motions permitted by floating foundations and constitutes a key element of difference between floating and bottom-fixed wind turbines (van der Veen et al. (2012)).

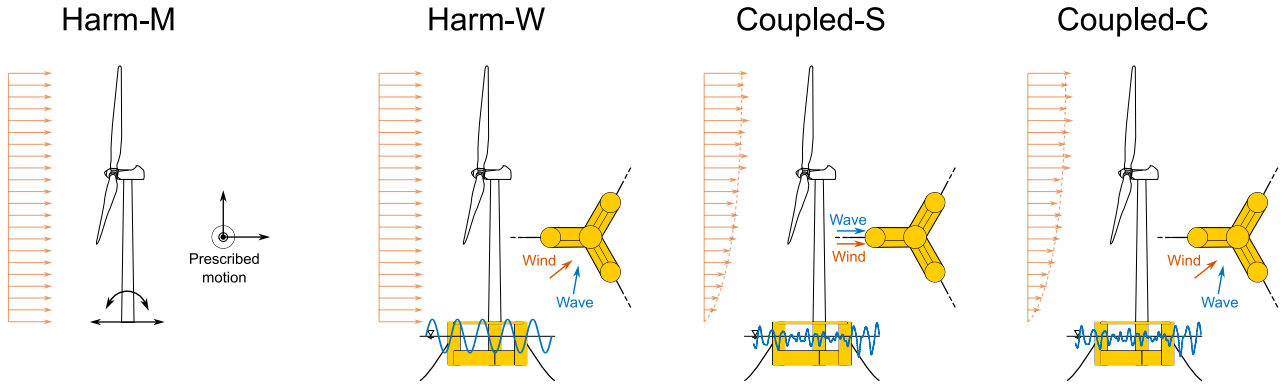
85 In order to isolate their effect, we introduce gradually these parameters in the analysis.

## 2.1 Simulation scenarios and tools

The impact of waves and platform dynamics on power production is studied carrying out simulations with four multi-physics models of the floating wind turbine and of the wind-wave conditions around it. The four models gradually add complexity to the simple analytical model of Eq. 3 as it is shown schematically in Fig. 1. In detail:

- 90 – The prescribed motion model (Harm-M), described in Sect. 2.1.1, extends the results of Eq. 3 using a more accurate representation of the wind turbine and its control system. The rotor aerodynamic response is calculated with ~~a~~the blade element momentum model rather than with a constant power coefficient, blades and tower are flexible elements, and the wind turbine is regulated with an active control scheme. The wind turbine is subjected to prescribed harmonic motion in the surge, sway, heave, roll, pitch, and yaw directions; motions are applied separately. In the Harm-M model wind is  
95 steady and uniform. Amaral et al. (2022) and Cottura et al. (2022) used a modeling approach similar to this one to study the effect of platform motion on wind turbine power.
- The regular waves model (Harm-W), described in Sect. 2.1.2, introduces in the analysis the floater dynamic response to waves. The floating wind turbine response in the Harm-W model is more realistic than in the Harm-M model since platform motions in different directions can occur simultaneously and interact depending on their phases relative to  
100 wave. Regular waves simulations are often used in the study of floating wind turbine response to wave loading as a first step in complexity before considering irregular waves: for example this has been recently done by Mahfouz et al. (2021) and Patryniak et al. (2023) when assessing the coupled motions of FOWTs. Harm-W simulations use a similar approach to link waves, platform motions and rotor power.
- The model with simplified wind-wave conditions (Coupled-S), described in Sect. 2.1.3, considers hydrodynamic loading  
105 and the floater dynamic response, but wind and waves are stochastic and their properties are defined according to the standard industrial practice to reflect the met-ocean conditions of a sea area in the Mediterranean. Wind and waves are aligned to the platform main axis and excite motion of the rotor mainly in the along wind direction, similarly to the model of Eq. 3. Simulations with stochastic wind and waves aligned to each others are often used to identify the response characteristics of FOWTs, as done for example by Mahfouz et al. (2021).
- 110 – In the model with clustered wind-wave conditions (Coupled-C), described in Sect. 2.1.4, the environmental parameters of simulations are extracted by means of a clustering algorithm from a database of met-ocean data recorded at the site of reference. In Coupled-C simulations wind and waves are not aligned, but their directionality is representative of the portion of sea of our interest. The importance of wind-wave misalignment on the global response of FOWTs has been investigated by Bachynski et al. (2014) and here it is introduced in the simulations to assess its influence on power  
115 production. In this work, the Coupled-C model provides the most accurate representation of operating conditions a floating wind turbine would meet if installed in the area we selected.

The main assumptions of the four models about wind, waves, and floating platform are summarized in Table 1.



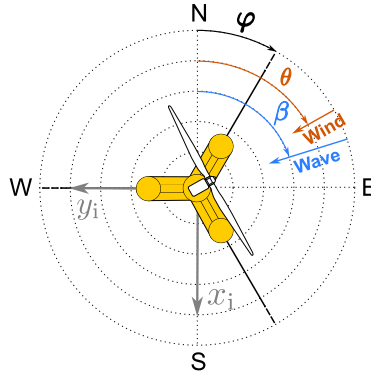
**Figure 1.** The influence of platform motion due to waves on the power production of floating wind turbines is studied with four simulation models. In the Harm-M model, sinusoidal motion of varying amplitude and frequency is prescribed at the base of the wind turbine tower base. In the Harm-W model, the turbine is excited with regular waves of different amplitudes, frequencies and directions. In the Coupled-S and Coupled-C models, the wind turbine response is computed for several environmental conditions with full-field turbulent wind and irregular waves; wind-wave conditions are obtained with simplifications typically used by standards (Coupled-S) or they are extracted by means of clustering from a database of met-ocean data (Coupled-C).

**Table 1.** Main assumptions of the four models of the floating wind turbine about wind, waves, and floating platform. Wind and waves are “Aligned” when they are directed along the platform main axis.

Model	Floating platform	Wind	Wind direction	Wave	Wave direction
Harm-M	No (prescribed motion)	Steady, unsheared	Aligned	No	–
Harm-W	Spar, semi-submersible	Steady, unsheared	Aligned	Regular	Variable
Coupled-S	Spar, semi-submersible	Turbulent, vertical shear	Aligned	Irregular	Aligned
Coupled-C	Spar, semi-submersible	Turbulent, vertical shear	Variable	Irregular	Variable

The Harm-W and Coupled-C models consider the wind-wave directionality. The wind and waves heading directions ( $\theta$  and  $\beta$ , respectively) are defined in Fig. 2; their difference  $\gamma = \theta - \beta$  is the wind-wave misalignment angle. We assume the nacelle yaw angle is always consistent with the wind direction.

All models are built in OpenFAST (Jonkman et al. (2023)), which includes modules for aerodynamics, hydrodynamics, control, and structural dynamics. The aerodynamic forces are calculated in AeroDyn v15 based on the quasi-steady blade element momentum theory. The aerodynamic influence of the tower is considered with a potential flow model and the blade airfoil aerodynamics is computed using the Beddos-Leishman approach. The structural response of the system is modeled in ElastoDyn based on multi-body theory and the modal approach. Hydrodynamic forces are calculated in HydroDyn using a combination of potential-flow theory, to compute radiation/diffraction effects, and strip-theory, to model viscous drag; the



**Figure 2.** Definition of the platform mounting orientation ( $\varphi$ ), of the wind direction ( $\theta$ ), the wave direction ( $\beta$ ), and the wind-wave misalignment angle ( $\gamma = \theta - \beta$ ).  $x_i$  and  $y_i$  are the axes of the earth-fixed coordinate system.

hydrodynamic coefficients required for the potential-flow solution are obtained with a panel code. The mooring lines are modeled in MoorDyn which uses a lumped-mass approach to discretize the cable dynamics over the length of the lines (Hall and Goupee (2015)). In the Harm-M model, tower-base motion is prescribed replacing the floating platform with a mass-spring-damper system implemented in the SubDyn module (Branlard et al. (2020)).

The incoming turbulent wind is introduced in the simulations by means of TurbSim (Jonkman (2009a)), which is a stochastic, full-field, turbulent wind simulator using a statistical model to numerically simulate the time series of the three components of the wind velocity vector at specified points of a two-dimensional grid fixed in space.

### 2.1.1 Simulations with prescribed motion

In simulations with the Harm-M model platform movement is prescribed at tower base, it is sinusoidal and applied separately along the six rigid-body motion directions of the turbine foundation; the phase is arbitrarily fixed at zero. The motion frequency ( $f_m$ ) is from 0 Hz to 0.3 Hz. This range covers very low frequencies that are typical of rigid-body motion modes of large floating wind turbines (Mahfouz et al. (2021)) and extends above the frequency range of typical wave spectra. The motion amplitude ( $A_m$ ) varies from 0 m to 3 m in case of translations, and from  $0^\circ$  to  $1.25^\circ$  in case of rotations. These values are considered realistic for normal operating conditions of floating wind turbines with characteristics similar to those considered in this study. Wind is steady and has no shear: this assumption is unrealistic but enables us to discern more clearly the effect of platform motions on the generated power.

### 2.1.2 Simulations with regular waves

The Harm-W model introduces in the analysis the dynamic response of the floating wind turbine to incident waves. Wave is of regular type and has variable direction  $\beta$ ; the values of wave height are 0.5 m, 1.0 m, 1.5 m, 2.0 m, 2.5 m, 3.0 m; the values

of wave frequency are 0.05 Hz, 0.10 Hz, 0.15 Hz, 0.20 Hz, 0.25 Hz, 0.30 Hz. These values are representative of the wave conditions at the sea site of reference, described in Sect. 2.3. Wind is steady and has no shear.

### 2.1.3 Coupled simulation with simplified wind-wave conditions

The Coupled-S model uses stochastic sheared wind and stochastic waves. The load cases are defined according to the recom-  
150 mendations of IEC 61400-3 (International Electrotechnical Commission (2019)) for fatigue load calculations:

- wind and wave are aligned to the platform symmetry axis (i.e., with reference to Fig. 2,  $\varphi = \beta = \theta = 0^\circ$ );
- a wind speed interval of 2 m/s is considered starting from 3 m/s and up to 25 m/s;
- the wave height is defined from its linear correlation with the average wind speed;
- three wave periods are associated to each wave height. Wave periods are obtained from the scatter diagram of the site as  
155 the three most probable for the selected wave height.

Every load case is simulated for 3 hours after an initial pre-simulation time of 3200 s that is introduced to account for transients.

### 2.1.4 Coupled simulation with clustered wind-wave conditions

Coupled-C simulations reproduce the wind-wave environment of the sea site of reference without making use of assumptions  
160 on the relations among wind speed, wind direction, wave height, wave period, and wave direction. Instead, the load cases of simulations are extracted from long-term series of the wind and wave parameters.

Approximately 4 CPU hours are required to simulate in OpenFAST one sea state for 3 hours, and it is unpractical to sim-  
ulate a dataset covering several months or years. Thus, the Coupled-C model considers a small subset of conditions that are  
representative of the long-term sea conditions at the site. The selection procedure is based on the data-clustering technique,  
which aims to extract features from the original dataset giving a more compact representation of the dataset properties. Data  
165 clustering has seen application in the wave climate analysis (Camus et al. (2011)) and to extrapolate wind statistics needed to  
estimate the energy production of wind energy systems (Schelbergen et al. (2020)).

Here, the selection of the subset of met-ocean conditions is based on the K-means algorithm (KMA) (Arthur and Vassil-  
vitskii (2007)). The initial database is formed by five-dimensional vectors, whose elements are the variables of interest that  
characterize the wind and wave climate: wind speed ( $U$ ), wind direction ( $\beta$ ), wave significant height ( $H_s$ ), wave peak period  
170 ( $T_p$ ), and wave direction ( $\theta$ ).

Given the initial database of  $N$  five-dimensional vectors  $\mathbf{x}^i = \{U_i, \beta_i, H_{s,i}, T_{p,i}, \theta_i\}$  with  $i = 1, \dots, N$ , the KMA identifies  
 $M$  groups of data, each defined by a five-dimensional prototype  $\mathbf{v}^k$  with  $k = 1, \dots, M$  called centroid. The clustering procedure  
starts with a random initialization of the  $M$  centroids; on each-every algorithm iteration, the nearest data to each centroid are  
identified and the centroid is redefined as the mean of the corresponding data. For example, on the  $(r + 1)$  step, a data vector  
175  $\mathbf{x}^i$  is assigned to the group  $j$  |  $\{\min\|\mathbf{x}^i - \mathbf{v}_r^j\|, j = 1, \dots, M\}$ , where  $\|\cdot\|$  is the Euclidean distance, and  $\mathbf{v}_r^j$  is the  $j$ -th centroid at

the  $r$ -th step. Once every data vector is assigned to a group, the centroid is updated as:

$$\mathbf{v}_r^j = \sum_{\mathbf{x}^i \in C^j} \frac{\mathbf{x}^i}{n_j} = 1, \quad (5)$$

where  $n_j$  is the number of elements of the  $j$ -th group and  $C^j$  is the subset of data included in the group  $j$ . The KMA iteratively moves the centroids minimizing the overall within-cluster distance until it converges and data belonging to every group are stabilized. The working principle of the clustering algorithm is showcased in Appendix A using the dataset of the sea site of reference of this study, that is presented in Sect. 2.3.

The number of clusters representing the sea states is a trade-off between the computational cost required for the simulation and the error made in using a subset of data instead of the entire data set. Here, the number of clusters is fixed to  $M = 36$ , which is the same number of conditions considered in the Coupled-S simulations. Every load case is simulated for 3 hours after an initial pre-simulation time of 3200 s.

## 2.2 Floating wind turbines concepts

The wind turbines of the FOWTs concepts are the NREL 5 MW (Jonkman et al. (2009)) and the IEA 15 MW (Gaertner et al. (2020)) [which key parameters whose key properties](#) are summarized in Table 2.

**Table 2.** Key properties of the NREL 5 MW and IEA 15 MW wind turbines.

Parameter	Unit	NREL 5 MW	IEA 15 MW
Power rating	MW	5	15
Cut-in wind speed	m/s	3	3
Rated wind speed	m/s	11.4	10.59
Cut-out wind speed	m/s	25	25
Design tip-speed ratio	-	7.55	9
Minimum rotor speed	rpm	-	5
Rated rotor speed	rpm	12	7.56
Rotor diameter	m	126	240
Hub height	m	90	150

The two wind turbines have a conventional variable-speed, variable blade-pitch-to-feather configuration. Power-production operation is controlled with the Reference OpenSource Controller (ROSCO) of Abbas et al. (2022) (version 2.8.0, NREL (2023a)) which is deemed to be representative of controllers adopted in commercial multi-megawatt wind turbines. In ROSCO, two active proportional integral (PI) controllers are implemented for generator torque and collective blade pitch angle. Saturation limits on rotors speed and blade pitch are used to ensure the [wind](#) turbine works within its design limits. ROSCO has two operating regions:



- 195 – below rated wind speed. Blade pitch is fixed to its design value of  $0^\circ$  and a PI controller regulates the generator torque to track the design tip-speed ratio (TSR). The IEA 15 MW has a minimum rotor speed constraint of 5 rpm, thus at low wind speed the blade pitch is scheduled based on a wind speed estimate to improve the turbine power output. This functionality is not used in the NREL 5 MW. The estimate of rotor-effective wind speed required by the TSR-tracking controller and the pitch scheduling is provided by an extended Kalman-filter estimator.
- 200 – above rated wind speed. Generator torque is constant and equal to its rated value and rotor speed is regulated with a PI controller on the collective blade pitch angle.

The controllers settings we adopted are those of the reference OpenFAST models of the four floating wind turbines and no further tuning was done in this study.

In addition to these baseline control strategies, we used two more advanced ROSCO functionalities:

- 205 – peak shaving. This algorithm reduces the maximum thrust force reached when the turbine operates in near-rated winds. The peak shaving is implemented prescribing a minimum blade pitch  $> 0^\circ$  function of the wind speed.
- nacelle velocity feedback. In above rated wind speed, the nacelle fore-aft acceleration is band-pass filtered, integrated, and multiplied by a constant gain which is set with the method ~~of~~ suggested by Abbas et al. (2022). The blade pitch command obtained with this algorithm is summed to the output of the PI pitch controller for rotor speed to improve
- 210 stability of platform motion.

We avoided using any control algorithm for start-up and shut-down sequences. When wind speed is below cut-in or above cut-out, the wind turbine is stopped and does not produce any power. Moreover, there is no control action to regulate the nacelle-yaw angle which is constant.

We expect ~~these control strategies will be used~~ the control strategies we considered will be adopted in future floating wind

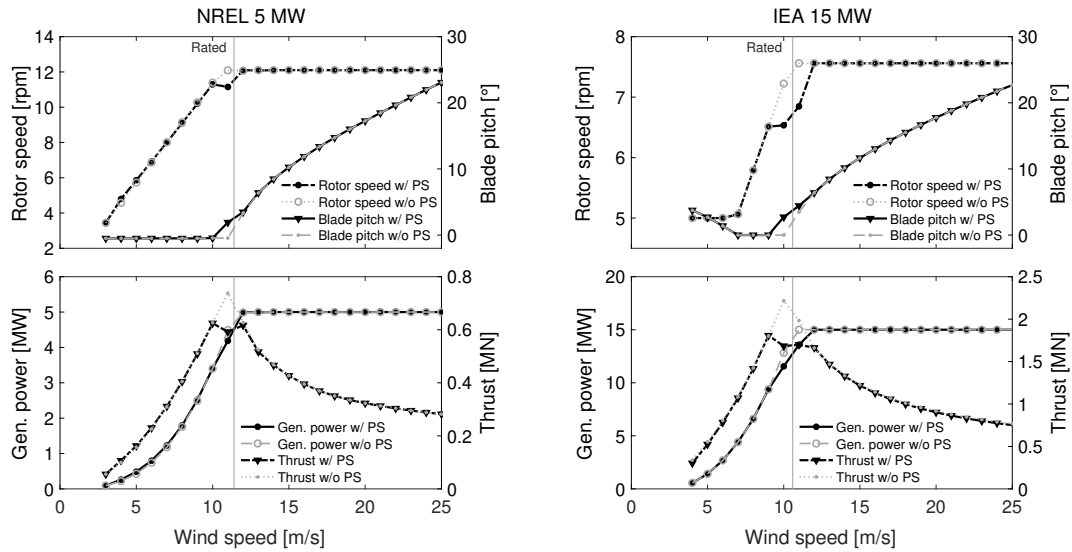
215 turbines. The peak shaving is increasingly important for large FOWTs because it lessens the restoring requirements of the floating platform (Renan dos Santos et al. (2022)). Traditionally, the instability issues of FOWT controllers have been solved with detuning, i.e., reducing their bandwidth below the platform pitch natural frequency (van der Veen et al. (2012)). As the FOWT size increases, the platform natural frequencies decrease leading to slower controllers when applying detuning. This is avoided with nacelle velocity feedback that improves power quality while reducing structural loads (Fleming et al.

220 (2019), Vanelli et al. (2022)).

The steady-state operating points of the NREL 5 MW and IEA 15 MW with fixed tower base regulated with the control strategies described above are visualized in Fig. 3.

Two platform concepts are examined for each wind turbine: a spar-buoy and a semi-submersible. We decided to focus on these substructures typologies because they have been adopted in recent commercial projects and research works. Moreover,

225 there are OpenFAST models easily accessible in online repositories. A description of the four floating wind turbines is reported in Sect. 2.2.1-2.2.4. The natural frequencies of the rigid-body motion modes of the four floating wind turbines that have been characterized with free-decay no-wind simulations carried out with their OpenFAST models are reported in Table 3.



**Figure 3.** Steady-state operating points of the land-based version of the NREL 5 MW and IEA 15 MW wind turbines. For the sake of comparison, curves without peak shaving (PS) are shown together with those obtained using the PS functionality used in the remainder of this work.

**Table 3.** Natural frequencies of the rigid-body motion modes of the four floating wind turbines.

Floating wind turbine	Surge (Hz)	Sway (Hz)	Heave (Hz)	Roll (Hz)	Pitch (Hz)	Yaw (Hz)
5 MW spar	0.011	0.011	0.032	0.042	0.042	0.039
5 MW semi-submersible	0.010	0.010	0.077	0.047	0.047	0.015
15 MW spar	0.012	0.012	0.031	0.024	0.024	0.083
15 MW semi-submersible	0.009	0.009	0.049	0.036	0.036	0.011

### 2.2.1 OC3 5 MW spar

230 The OC3-Hywind spar-buoy is a floater designed for the NREL 5 MW reference wind turbine (Jonkman (2009b)). The floater is made of steel, ballasted with inert material, and it is composed of a 120 m draft cylinder of 9.4 m diameter, tapered to 6.5 m diameter in correspondence of the sea surface. The linearly tapered conical region extends from a depth of 4 m to a depth of 12 m below the mean sea level; the overall length of the floater is 130 m. The design water depth for the floater is 320 m. The mooring system consists of three all-chain slack catenaries, spread  $120^\circ$  apart; each line has an unstretched length of 902.2 m and a diameter of 0.09 m; delta lines connecting mooring lines to fairleads are used to increase yaw stiffness.

### 235 2.2.2 DeepCwind 5 MW semi-submersible

The OC4 DeepCwind semi-submersible is a floater design developed in the DeepCwind project (Robertson et al. (2014)). The platform consists of a main column supporting the wind turbine tower and three offset columns connected to the main one through a series of smaller diameter pontoons and cross members; the draft is 20 m. The floater is moored with three catenary lines spread symmetrically about the vertical axis. The fairleads are positioned at a depth of 14.0 m below the water level, at a  
240 radius of 40.87 m from the platform centerline, while the anchors are located at a water depth of 200 m at a radius of 837.6 m from the platform centerline.

### 2.2.3 WindCrete 15 MW spar

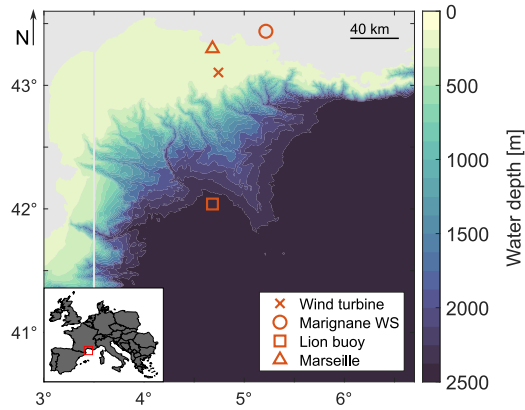
The WindCrete, introduced by Campos et al. (2016), is a spar-type platform supporting the IEA 15 MW. The tower and the spar form a monolithic structure made of concrete. The spar has a diameter of 18.6 m, a draft of 155 m, and has ballast in its lower  
245 section to increase the hydrostatic stiffness in the roll and pitch directions. The tower has conical shape and, in the version of Campos et al. (2016), it places the hub 135 m above the mean sea level. We increased the tower base height from 15 m to 30 m keeping the same tower flexible length to have the same hub height of the VoltturnUS of 150 m. Due to this change, the first fore-aft natural frequency is 0.57 Hz instead of 0.5 Hz of the original tower. The mooring system consists of three catenary lines attached to the platform hull with delta-shaped connections. The global response of the WindCrete to several wind and  
250 wave conditions is examined by Mahfouz et al. (2021) and the OpenFAST model of the platform is published in the repository of Molins et al. (2020).

### 2.2.4 VoltturnUS 15 MW semi-submersible

The UMaine (University of Maine) VoltturnUS-S (Allen et al. (2020)) is an open-source concept of a semi-submersible floating wind turbine based on the IEA 15 MW. The floater is made of steel and is composed of three 12.5 m diameter columns disposed  
255 symmetrically around a central column hosting the wind turbine. The three bottom pontoons connecting the inner and outer columns have a rectangular section ( $12.5 \text{ m} \times 7.0 \text{ m}$ ); three cylindrical struts connect the top of the outer column to the central one. The operational draft of the floater is 20 m; the total mass of the platform is 17854 t. The mooring system is designed for a generic 200-m-depth location and is composed of three 850 m long chain-catenary lines, arranged at  $120^\circ$  angle around the floater. The fairlead is located at the extreme point of each external column, at a radius of 58 m from the vertical axis of the  
260 floater and 14 m below the sea water level. The OpenFAST model of the VoltturnUS is available from Allen et al. (2023).

## 2.3 Reference sea site and met-ocean conditions

The wind and wave conditions defining the load cases are representative of the climate at a sea area sited in the Golf de Fos, located off the French coast in the Mediterranean sea. The site of reference is shown in Fig. 4, it is 40 km offshore Fos Sur Mer and its approximate location is identified by the coordinates Lat.  $43^\circ 6' 15.12''\text{N}$ , Long.  $4^\circ 44' 32.06''\text{E}$ .



**Figure 4.** Sea area of the reference site of this study. The area is located in the Mediterranean sea off the French coast, as shown in the inset map. Markers show the position of the floating wind turbine, the Marignane Weather Station, the Lion Buoy, and the city of Marseille. Land is depicted in grey and the color scale corresponds to water depth (EMODnet (2023)).

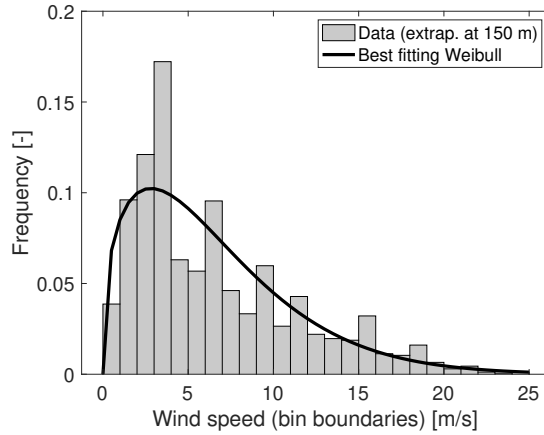
265 Two open-access databases have been used to characterize the wind and wave conditions at this site: wind data of the Marignane Weather Station, provided by Meteostat (Meteostat (2022)); wave data of the Gulf of Lion buoy, located 100 km south to the site location, shared by MetoFrance (France (2022)). The variables of the dataset of interest for this study are: wind speed at 10 m height, wind direction, wave elevation, wave period, wave direction. The two databases contain wind-wave measurements for several years, however, wave directionality measurements are available only for a period of six months, 270 from October 2019 to March 2019. The time resolution is 1 hour and the dataset with simultaneous information about the five variables of interest has 3362 data points in total.

No information about the vertical profile of mean wind speed is available, thus it is assumed to follow the power law:

$$U(z) = U(h) \left( \frac{z}{h} \right)^\alpha, \quad (6)$$

where  $U$  is the mean wind speed,  $z$  a generic height,  $h$  is the reference height of 10 m, and  $\alpha$  is the shear exponent. In 275 accordance with the meteorological study of Krieger et al. (2015) we take  $\alpha = 0.14$ .

The wind speed distribution is essential for evaluating the wind turbine annual energy production. Figure 5 shows the probability density function of the 1-hour mean wind speed extrapolated at 150 m height (i.e., the hub height of the IEA 15 MW) by means of Eq. 6. The best fitting Weibull distribution has scale parameter of 7.17 and shape parameter of 1.38. The probability of occurrence of wind speed is over predicted in some bins (e.g., 5-6 m/s, 8-9 m/s) and this problem is likely due 280 to the small size of the database. The best fitting Weibull distribution for the 1-hour mean wind speed at the hub height of the NREL 5 MW (90 m) has scale parameter of 6.68 and shape parameter of 1.38.



**Figure 5.** Probability density function of the 1-hour mean wind speed at 150 m at Marignane Weather Station obtained from data recorded between October 2019 and March 2019. The best fitting Weibull distribution is obtained for scale parameter of 7.17 and shape parameter of 1.38.

There is no measurement of turbulence intensity at the site, thus the Normal Turbulence Model (NTM) is used. The characteristic standard deviation of wind speed is given by:

$$\sigma_u = I_{\text{ref}}(0.75U_{150} + 5.6), \quad (7)$$

285 where  $U_{150}$  is the mean wind speed at 150 m, and  $I_{\text{ref}} = 0.12$  which is appropriate for onshore Class C turbines and conservative for offshore turbines of similar characteristics.

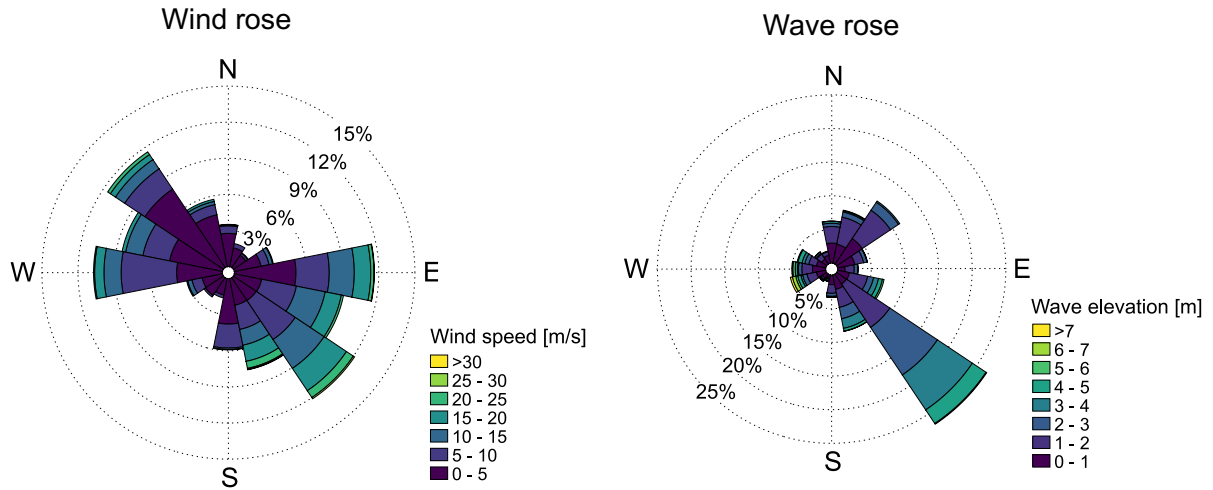
Figure 6 shows the wind rose from the records, where wind speeds were extrapolated to their value at 150 m by means of Eq. 6, and the rose of the wave coming-from direction. Waves come from SE most of the time, while it is equally probable to have wind from SE and NW, suggesting the assumption of wind-wave alignment is not representative of this site.

290 In the Coupled-S model, wave elevation  $H_s$  is assumed to depend linearly on wind speed:

$$H_s = 0.128U_{150} + 0.844. \quad (8)$$

Coefficients in the expression were obtained from linear regression of wave height and 150 m-mean wind speed data.

The wind-wave conditions for the Coupled-S simulations for the Golf de Fos site are reported in Table B1. Environmental conditions of the Coupled-C simulations are obtained applying the clustering algorithm of Sect. 2.1.4 to the dataset of five-  
 295 dimensional vectors  $\mathbf{x}^i = \{U_i, \beta_i, H_{s,i}, T_{p,i}, \theta_i\}$  with  $i = 1, \dots, 3362$ . The 36 conditions identified by the clustering algorithm are reported in Table B2.



**Figure 6.** Wind rose of the 1-hour wind speed at 150 m and wave rose of the 1-hour wave elevation.

### 3 Results

In this section we show the results of the four simulation scenarios described in Sect. 2.1. Key parameters to analyze the impact of waves and platform motions on the wind turbine energy production are the time-averaged value of the generated power ( $\overline{P_g}$ ), the wind turbine power curve function of wind speed, and the annual energy production (AEP). Before reporting the results of the Harm-M, Harm-W, Coupled-S and Coupled-C simulations, we show the influence on the wind turbine power curve of the peak shaving control strategy and platform static-mean tilt (Sect. 3.1), and of wind shear and turbulence (Sect. 3.2).

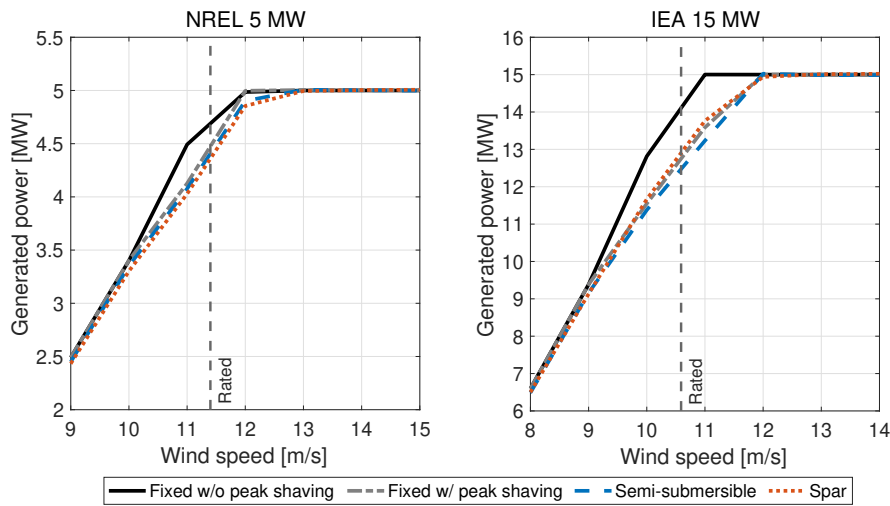
#### 3.1 Influence of peak shaving control and platform static-mean tilt

Figure 7 shows how the power curves of the NREL 5 MW and the IEA 15 MW with steady non-sheared wind change due to the use of a peak-shaving routine in the wind turbine controller and due to a floating foundation compared to a bottom-fixed one. The power curves have been obtained from time-domain simulations in OpenFAST by averaging the instantaneous power over 900s after it has reached steady state for each wind speed. OpenFAST models for these simulations are equivalent to those of the Harm-W scenario, but with still water.

The peak shaving routine reduces the turbine power near the rated wind speed because the turbine does not work at the power-optimal operating point when blade pitch is different than the fine pitch. The reduction due to the peak shaving in the bottom-fixed turbines is up to 8.9% for the NREL 5 MW and 11% for the IEA 15 MW.

When the turbine is on top of a floating foundation, the thrust force results in a static-mean tilt rotation of the structure and a reduction of the rotor area projection on the vertical plane. The four floating wind turbines have a maximum static-mean tilt between 3-4° near the rated wind speed and the consequent maximum reduction of generated power compared to the case with

315 fixed tower bottom and with peak shaving is: 2% for the 5MW semi-submersible, 3% for the 5MW spar, 2.7% for the 15MW semi-submersible, and 2.7% for the 15MW spar.

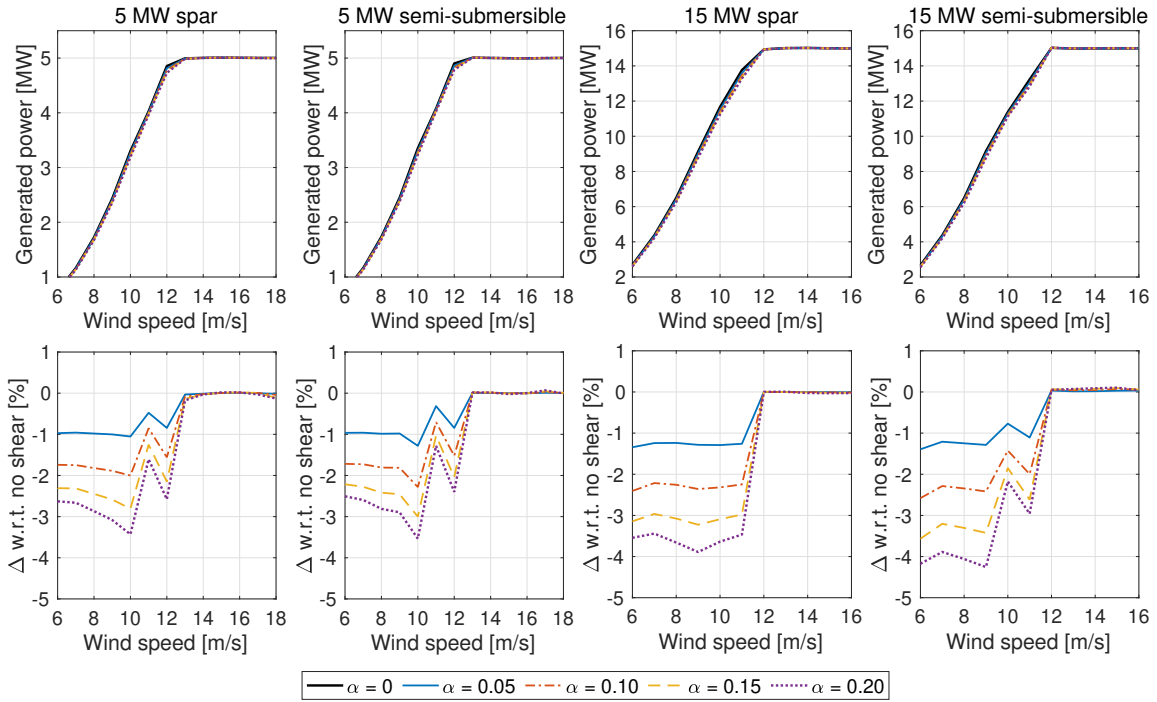


**Figure 7.** Steady-state power curves of the NREL 5 MW and IEA 15 MW wind turbines with a fixed, a semi-submersible, and a spar foundations. The power curve near the rated wind speed is influenced by the peak shaving control strategy, which reduces the conversion efficiency making the turbine work far from its aerodynamically-optimal operating point, and the use of a floating foundation, which is responsible of a large rotor tilt angle and a consequent reduction of the rotor area projection on the plane normal to wind. Peak shaving is used in all floating wind turbines.

### 3.2 Influence of wind shear and turbulence

The met-ocean database at our disposal does not provide any information about the vertical profile of mean wind speed and turbulence intensity, therefore wind shear and turbulence in Coupled-S and Coupled-C simulations have been selected based  
 320 on standards. This procedure is common in the early stage of floating offshore wind projects when detailed measurements of wind parameters at a given site are not available.

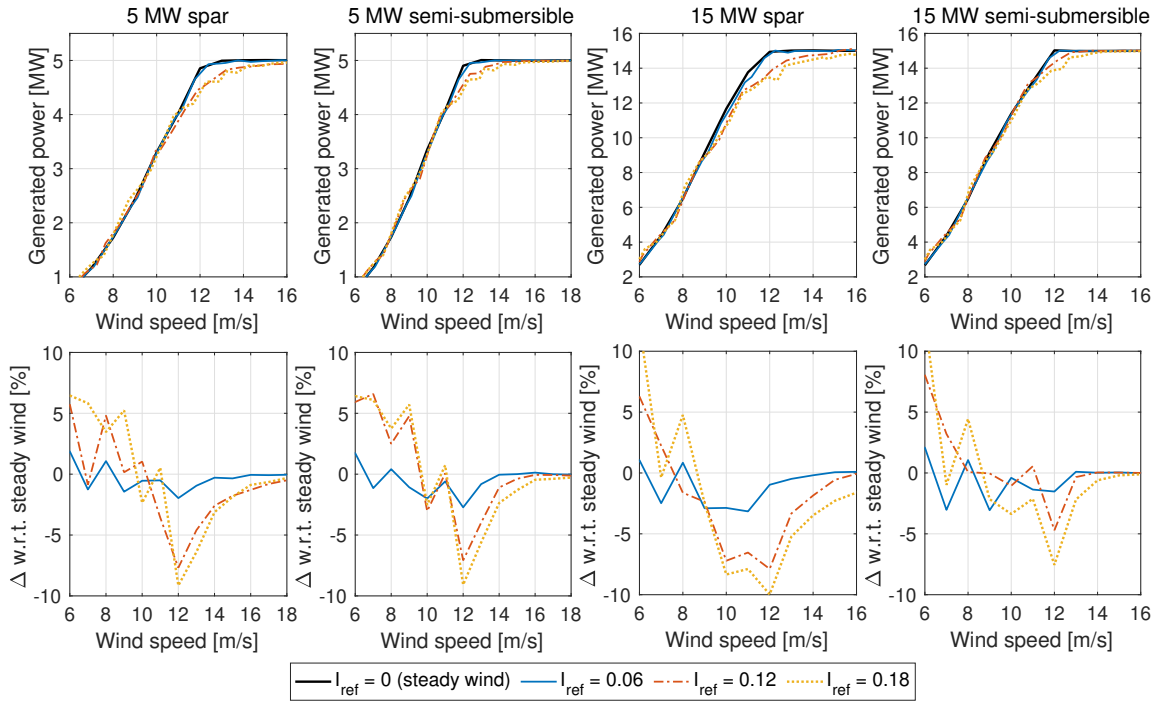
Effect of wind shear is assessed from power curves derived with the same method used to obtain power curves of Sect. 3.1, but considering a vertically sheared wind instead of a spatially uniform one. The vertical profile of wind speed is obtained by means of Eq. 6 fixing the reference height at the wind turbine hub and changing the exponent  $\alpha$  to control the amount of shear.  
 325 Figure 8 shows how the power curve of the four floating wind turbines changes for several values of  $\alpha$ . The shear exponent influences the wind turbine power curve in the below rated region: the rotor-averaged wind speed decreases for higher values of  $\alpha$  and the turbine produces less power. Above the rated wind speed, the turbine power is saturated and it is not affected by  $\alpha$ .



**Figure 8.** Effect of wind shear of the four floating wind turbines. Power curves and percent variation of the power curve with respect to the case with no shear ( $\alpha = 0$ ).

Effect of turbulence intensity is evaluated simulating the wind turbine with no waves, the wind speeds of Table B1 and changing  $I_{ref}$  in the NTM of Eq. 7. Every wind condition was simulated for 3 hours after a pre-simulation time of 3200 s  
 330 needed to account for transients. In Fig. 9 we see that in the case with  $I_{ref} = 0.06$  the power is lower than with steady wind for below-rated wind speeds. A further increase in turbulence brings higher power near cut-in and lower power close to rated. As explained by St. Martin et al. (2016), near the rated wind speed, the turbine controller acts on the blades pitch to counteract rotor overspeed driven by wind gusts. Since the controller does not react instantly to rotor speed and blade pitch cannot go below  $0^\circ$ , the average blade pitch with turbulence and a near-rated wind speed can be different from its power-optimal value  
 335 which is instead used in the steady wind case.



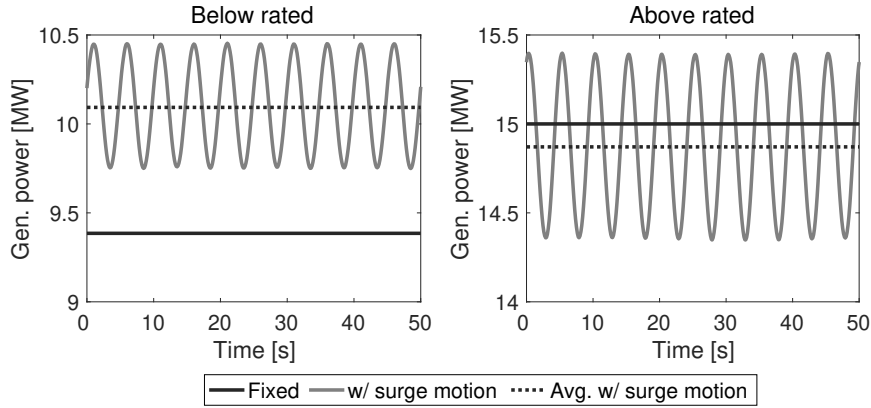


**Figure 9.** Effect of turbulence intensity of the four floating wind turbines. Power curves and percent variation of the power curve with respect to the case with steady wind.

We estimate that uncertainty in wind shear and turbulence intensity is mostly in the below rated region and it may result in variations of the power curve up to 10%. This is in agreement with the results reported by St. Martin et al. (2016) who calculated turbulence-dependent power curves for a 1.5MW wind turbine installed at the US Department of Energy National Wind Technology Center.

### 340 3.3 Power response to prescribed platform motion

To begin the discussion of Harm-M simulations results and to make a contact point with the analytical model of Eq. 3-4, in Fig. 10 we show the time series of power generated by the IEA 15 MW, with prescribed surge motion of 1.5 m amplitude and 0.2 Hz frequency; the prescribed motion can be considered the first-order response to a wave of 5 s period. The time series of Fig. 10 as well as other results reported in this section, have been obtained with the Harm-M modeling approach described in Sect. 2.1.1. In Fig. 10, two steady-uniform wind conditions are examined, one in the below-rated region with a wind speed of 9 m/s, and one with an above-rated wind speed of 15 m/s. In the 9 m/s case, the fixed turbine has an average production of 9.4 MW, which is increased to 10.1 MW when the platform undergoes harmonic surge motion (+7.5%). In the above rated operating condition, motion has a lower influence on the power production that passes from 15 MW of the fixed turbine to 14.9 MW when the platform moves (-1%).



**Figure 10.** Power generated by the IEA 15 MW with a below-rated wind speed of 9 m/s and an above-rated wind speed of 15 m/s, with fixed tower bottom and with prescribed platform surge motion of 1.5 m amplitude and 0.2 Hz frequency.

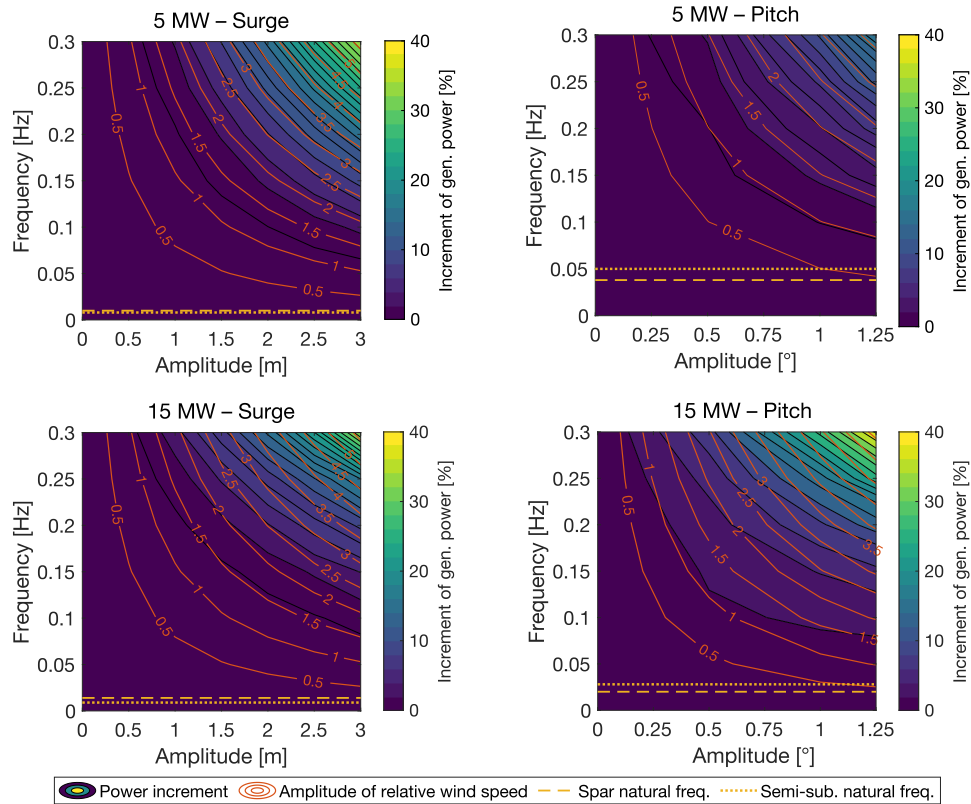
350 Figure 11 shows  $\overline{P_g}$  of the NREL 5 MW and the IEA 15 MW computed from Harm-M simulations with surge and pitch motions and a wind speed of 9 m/s. In Fig. 11,  $\overline{P_g}$  is normalized by the power of the fixed wind turbine. The average power output increases with increasing frequency and amplitude of platform motion. Movements in the surge or pitch directions give an apparent wind at the rotor, which causes an increase in average generated power as explained in the analytical model of Eq. 3: the increment is proportional to the amplitude of the apparent wind speed variations at hub, which is equal to  $U_{r,h} = \omega_m A_m$  in case of surge and  $U_{r,h} = \omega_m A_m h_h$  in case of pitch, where  $h_h$  is the hub distance from the platform pitch rotation center (i.e., the tower base in this case). In the surge case, the apparent wind is uniform across the rotor and equal to  $U_{r,h}$ , whereas in the pitch case it is higher than  $U_{r,h}$  in the upper portion of the rotor disk and lower in the lower portion.

If we compare cases of surge and pitch motions with similar  $U_{r,h}$ , the mean power is slightly higher in case of pitch motion and this is attributed to the higher amplitude of wind speed oscillations in the upper part of the rotor. The increment of generated power with surge motion is similar for the two wind turbines. Instead, for pitch motion of equal amplitude, the 15 MW reaches a higher maximum power. This occurs because  $U_{r,h}$  is higher for the 15 MW than for the 5 MW since  $h_h$  is greater in the 15 MW wind turbine. For example, making reference to Fig. 11, we see that with a pitch motion of  $A_m = 1^\circ$  and  $f_m = 0.2\text{Hz}$ , the increment of  $\overline{P_g}$  for the 5 MW is 4.4% and  $U_{r,h} = 2.0$  m/s, while for the 15 MW the increment of  $\overline{P_g}$  is 9.3% and  $U_{r,h} = 3.3$  m/s.

365  $\overline{P_g}$  in the above rated region is slightly lower than the rated power regardless of the tower base motion. The-With a wind speed of 9 m/s, the variations in generated power due to harmonic motion in the sway, heave, roll, and yaw directions for all motion frequencies and amplitudes we investigated are between -0.3% and +0.4% with a wind speed of 9 m/s.

Harm-M simulations, which simplify to a large extent the platform kinematics, show a wind turbine operating at a below-rated wind speed produces more power when the rotor moves cyclically in the wind direction and the increment is due to the energy in the apparent wind. This is in agreement with the analytical model of Eq. 3 and with results of Amaral et al.

370



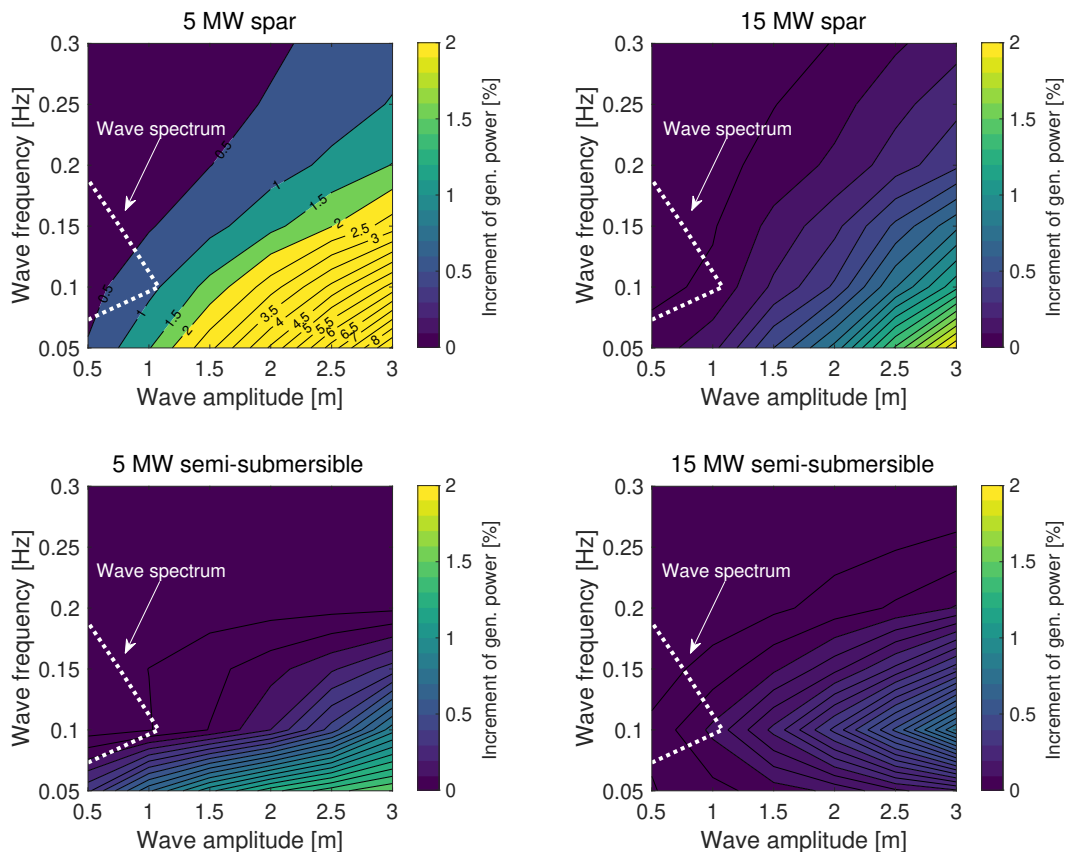
**Figure 11.** Increment of average generated power of the NREL 5 MW and of the IEA 15 MW with prescribed motion in the platform surge and pitch directions and a below rated wind speed of 9 m/s. The generated power is normalized by the power of the fixed wind turbine. The “amplitude of relative wind speed” is the amplitude of the apparent wind speed at hub due to platform motion ( $U_{r,h}$ ); horizontal lines mark the natural frequency of the floating platforms corresponding to the direction of prescribed motion (see Table 3).

(2022) and Cottura et al. (2022) obtained with comparable approaches. Figure 11 shows that the power increases significantly only for motions of remarkably higher frequency than the platform surge and pitch modes of the four floating wind turbines. With Harm-W, Coupled-S and Coupled-C simulations, which gradually introduce complexity and realism into the modeling of floating wind turbines, we will show that these power increments are not achieved in practice.

### 375 3.4 Power response with regular waves

The Harm-W ~~simulation~~ simulations introduce in the analysis the response of floating platforms to regular waves. Results presented in this section are obtained with the modeling approach and considering the values of wave height and frequency reported in Sect. 2.1.2. Every regular wave condition was simulated for 3000 s and the first 200 s were discarded in the post processing to remove transients.

380 Figure 12 shows  $\overline{P_g}$  for the four platforms with wind and waves aligned to the platform main axis and a wind speed of 9 m/s. We see wave excitation increases the generated power in all platforms, the 5 MW spar has the largest increment and the 15 MW semi-submersible has the smallest. In all turbines the power increment is proportional to wave amplitude. In first approximation, platform motion due to wave excitation is linearly proportional to wave height, therefore, bigger waves result in greater movements [of the wind turbine hub](#) in the along-wind direction, subsequently leading to higher mean power output with the mechanism explained in Eq. 3 and with the Harm-M simulations.



**Figure 12.** Increment of average generated power of the four floating wind turbines with wind and waves aligned to the platform main axis and a below rated wind speed of 9 m/s. The generated power is normalized by the turbine power with no waves. The dotted line is in correspondence of the wave spectrum with  $H_s = 4$  m and  $T_p = 9$  s. The increment of generated power for the 5 MW spar is above 2%, which is the upper limit for the other three floating wind turbines, and is indicated by labels on contours lines.

385

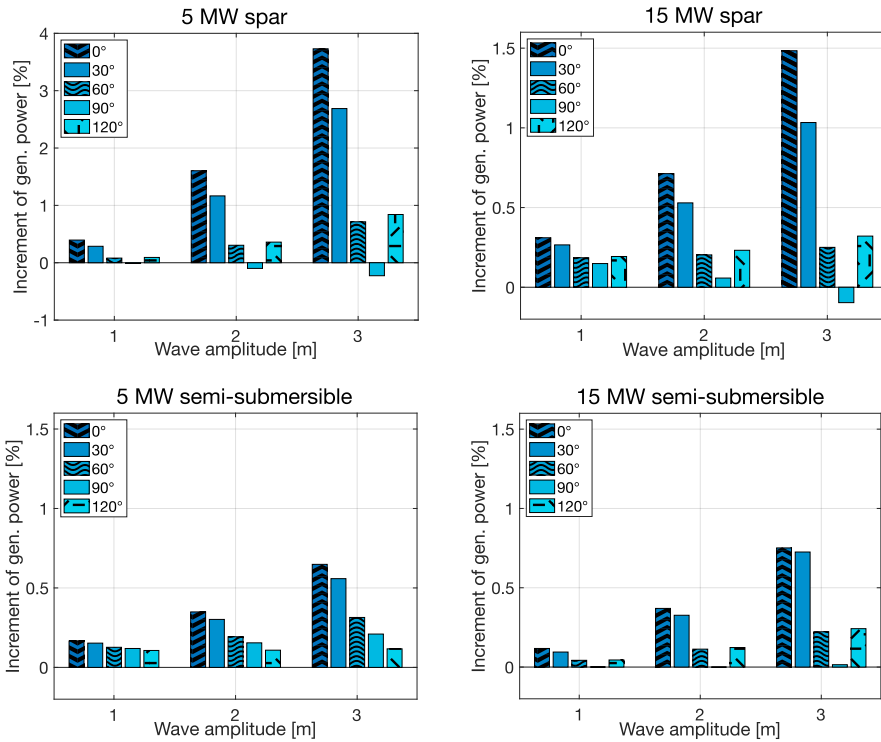
Except for the VoltornUS, the power increment is inversely proportional to wave frequency for a given wave amplitude. This result, which appears to be in contradiction with Harm-M results, is justified when taking into account the dynamic response to wave excitation of the platforms. Lower-frequency waves excite the FOWTs closer to their natural frequencies, resulting in

larger movements. In the 15 MW semi-submersible case, the maximum power increment is found at 0.1 Hz due to the platform  
390 hydrodynamic characteristics.

In the Harm-W analysis, the 5 MW spar wind turbine has the largest increment of generated power that reaches almost 10% with a wave amplitude of 3 m ~~at~~ with a frequency of 0.05 Hz. This large increment, which is not seen in other platforms, is likely due to the coupled surge and pitch motions that occur at relatively high frequency and involve large hub movements. The surge motion with 3 m waves of 0.05 Hz frequency is over 3 m of amplitude for the 5 MW spar, whereas it is lower than  
395 1 m in all other turbines. Comparing the increment of  $\overline{P_g}$  for the two turbine sizes and for the same floater type, we see that power gains for the 5 MW turbines are generally higher than for their 15 MW counterparts. This is due to the fact that platform modes are at lower frequency in the 15 MW FOWTs and motion due to first-order wave loads is milder.

Figure 12 shows that large-amplitude low-frequency waves can increase the power output of floating wind turbines. However, these power gains are achieved in a real scenario if waves with these characteristics exist. The dashed region in Fig. 12 is in  
400 correspondence of a wave spectrum that can occur at the Golf de Fos site. The wave spectrum is obtained from the wave height PSD computed according to the JONSWAP model of Hasselmann et al. (1973) with  $H_s = 4$  m and  $T_p = 9$  s. This is the most severe sea state recorded in the dataset at our disposal and has rather high waves of low period, which is the condition required to increase power production. As visible, wave excitation is not powerful enough to generate a meaningful increase of the generated power. Depending on the installation site, it is possible that during its lifetime the floating wind turbine may  
405 encounter a harsher sea, but the probability of occurrence at wind speeds lower than rated is generally low.

To investigate the influence of wind-wave directionality, we calculated  $\overline{P_g}$  of the four floating wind turbines for a below rated wind speed of 9 m/s, regular waves of 0.1 Hz, three wave heights [1m, 2m, 3m], and wave coming-from direction  $\beta = [0^\circ, 30^\circ, 60^\circ, 90^\circ, 120^\circ]$ , while  $\varphi = \theta = 0^\circ$  always. The results are reported in Fig. 13: the largest power output gain is always achieved when wind and waves are aligned, because wave forces the platform to move in the wind direction. Conversely,  
410 when wave is perpendicular to wind, motions in the sway and roll directions are excited and these have a negligible effect on the generated power. When waves are perpendicular to the platform main axis ( $\gamma = 90^\circ$ ) the increment of  $\overline{P_g}$  is minimum and close to zero. The trend is confirmed for three values of wave amplitude and a similar result is obtained with waves of 0.05 Hz frequency (not shown here for brevity).



**Figure 13.** Increment of generated power of the four floating wind turbines due to harmonic waves with a below rated wind speed of 9 m/s, regular waves of 0.1 Hz frequency and five values of the misalignment angle  $\gamma$ .

415 Simulations with the Harm-M and the Harm-W models demonstrate it is necessary to have large-amplitude along-wind motions to increase the mean generated power. However, in normal operating conditions it is unlikely to achieve these gains. ~~The: the~~ large-motions condition conflicts with the current design practice of floaters and wind turbines, which tries to ~~place the structure natural frequencies away from the wave spectrum~~ minimize the floating wind turbine movements to reduce mechanical loads, reduce material usage and increase fatigue life.

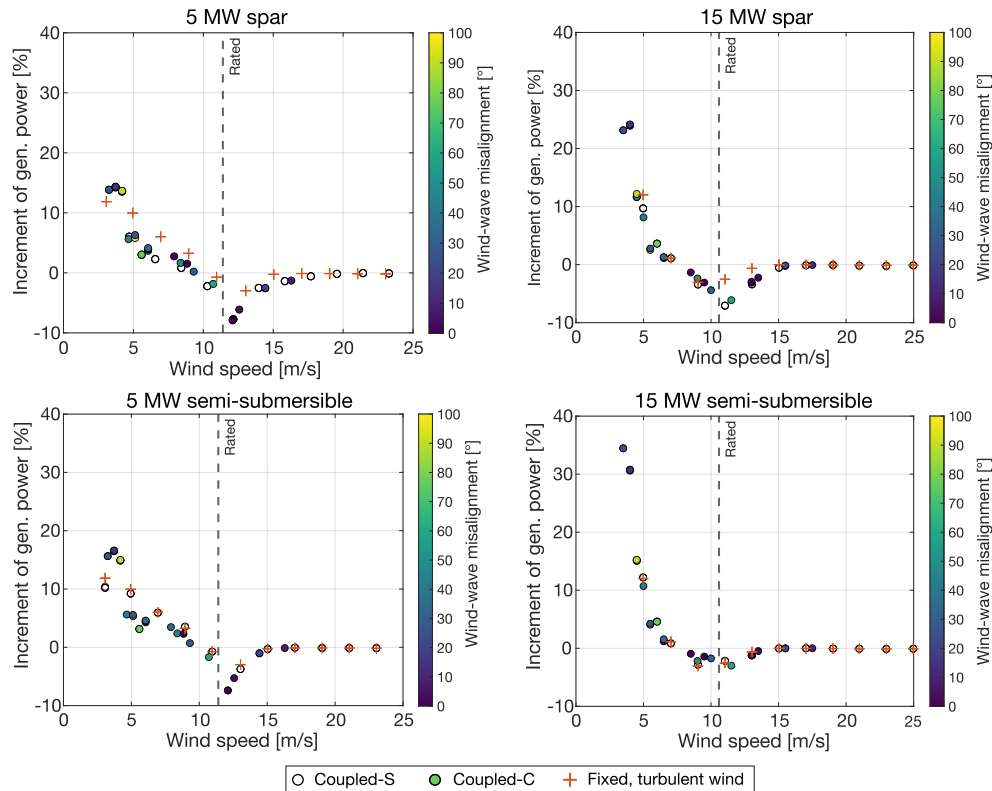
### 3.5 Power response with stochastic wind and waves

420 A full picture of the energy conversion process of a floating wind turbine is gained with the Coupled-S and Coupled-C simulations which consider realistic stochastic wind and waves. In our study, the Coupled-C scenario is the most faithful representation of the environmental conditions of the studied sea area since it reproduces the mutual relationship between wind and waves based on recorded met-ocean data. The key parameter we use to understand the impact of waves on the wind turbine power production in Coupled-S and Coupled-C scenarios is the AEP presented in Sect. 3.5.2. Before discussing the AEP estimates, in 425 Sect. 3.5.1 we delve into the physics of the power generation process: we examine the effect of wave excitation and wind-wave misalignment on hub motion, on rotor local inflow, and on changes in wind turbine power.

### 3.5.1 Wind turbine power, rotor local inflow, and along-wind motions

Figure 14 shows the variation of average generated power of the four floating wind turbines in the Coupled-S and Coupled-C scenarios with respect to the steady-wind no-wave cases of Fig. 7. To emphasize the effect of wind turbulence alone, we introduce in the comparison a case with a fixed foundation and turbulent wind ( $I_{\text{ref}} = 0.12$ ).

In the fixed wind turbines, the effect of wind turbulence is to increase power at low wind speeds and to decrease it around rated, as already commented in Fig. 9. This trend is similar with floating foundations and waves. Moreover, the mean power generated with wind-wave misalignment of any amount is very close to the mean power generated with aligned wind and waves.

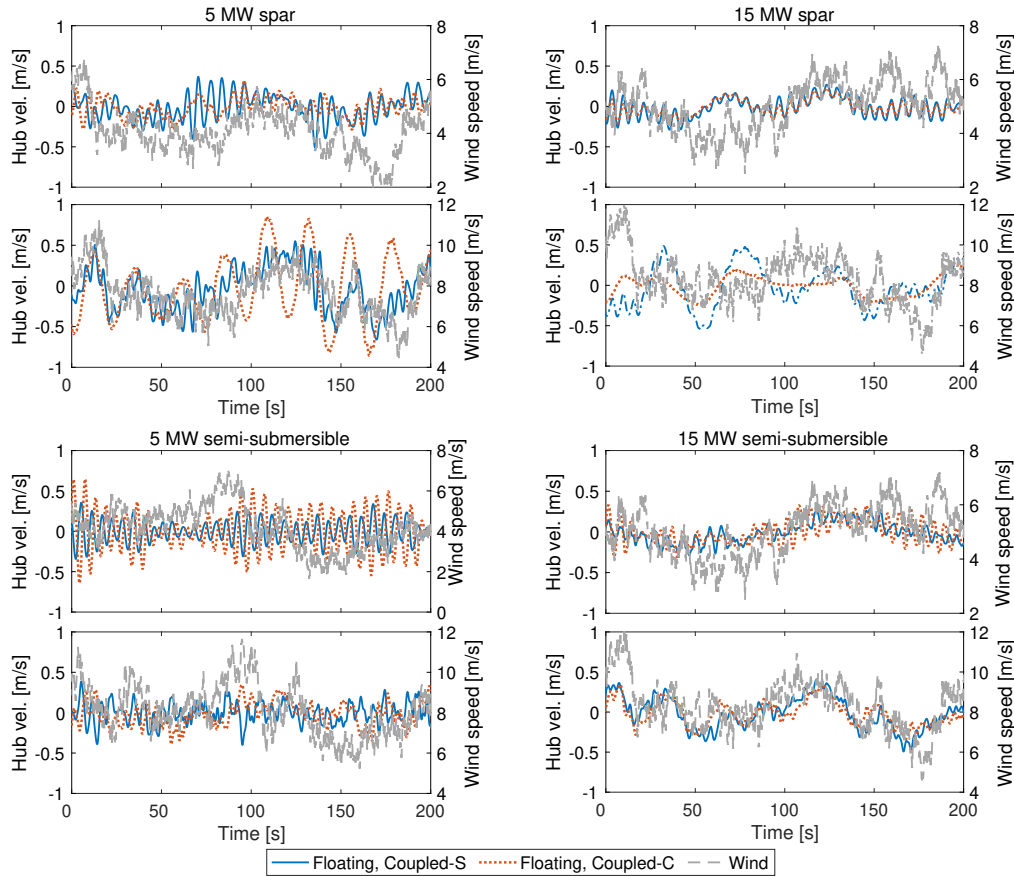


**Figure 14.** Increment of average generated power of the four floating wind turbines in the Coupled-S and Coupled-C scenarios with respect to the steady-wind no-wave cases. Markers of the Coupled-C cases are colored according the absolute value of wind-wave misalignment angle  $|\gamma|$ . The “Fixed, turbulent wind” case is added to the comparison to show the effect of wind turbulence.

To clarify the impact of wind, waves, and rigid-body movements on the energy conversion process occurring at the wind turbine rotor we examine the hub motion of the four floating wind turbines. As discussed in Eq.2, the hub motion contributes to the apparent wind speed experienced by rotor and hence to the generated power. Two below-rated wind speeds, 5 m/s and 9 m/s, are considered: in these wind conditions the wave spectrum has similar parameters in the Coupled-S and Coupled-C

cases, but in the Coupled-C environment waves are not aligned to the wind direction and they cause cross-wind motions (cfr. 440 Table B1 and Table B2).

Figure 15 shows the structural velocity of the hub in the along-wind direction (positive downwind) for the four floating wind turbines and compares it with the time series of wind speed at the hub height. In all floating wind turbines and in every 445 simulation scenario, the hub structural velocity, which is mostly due to rigid-body platform motion, has variations that hardly reach 1 m/s and in most cases are below 0.5 m/s of amplitude. At the same time, wind fluctuations have amplitudes of 2-3 m/s. The apparent wind speed seen by hub is the sum of wind speed and hub structural velocity, thus, in all four floating wind turbines, wind gusts are responsible of the largest fraction of its variations.

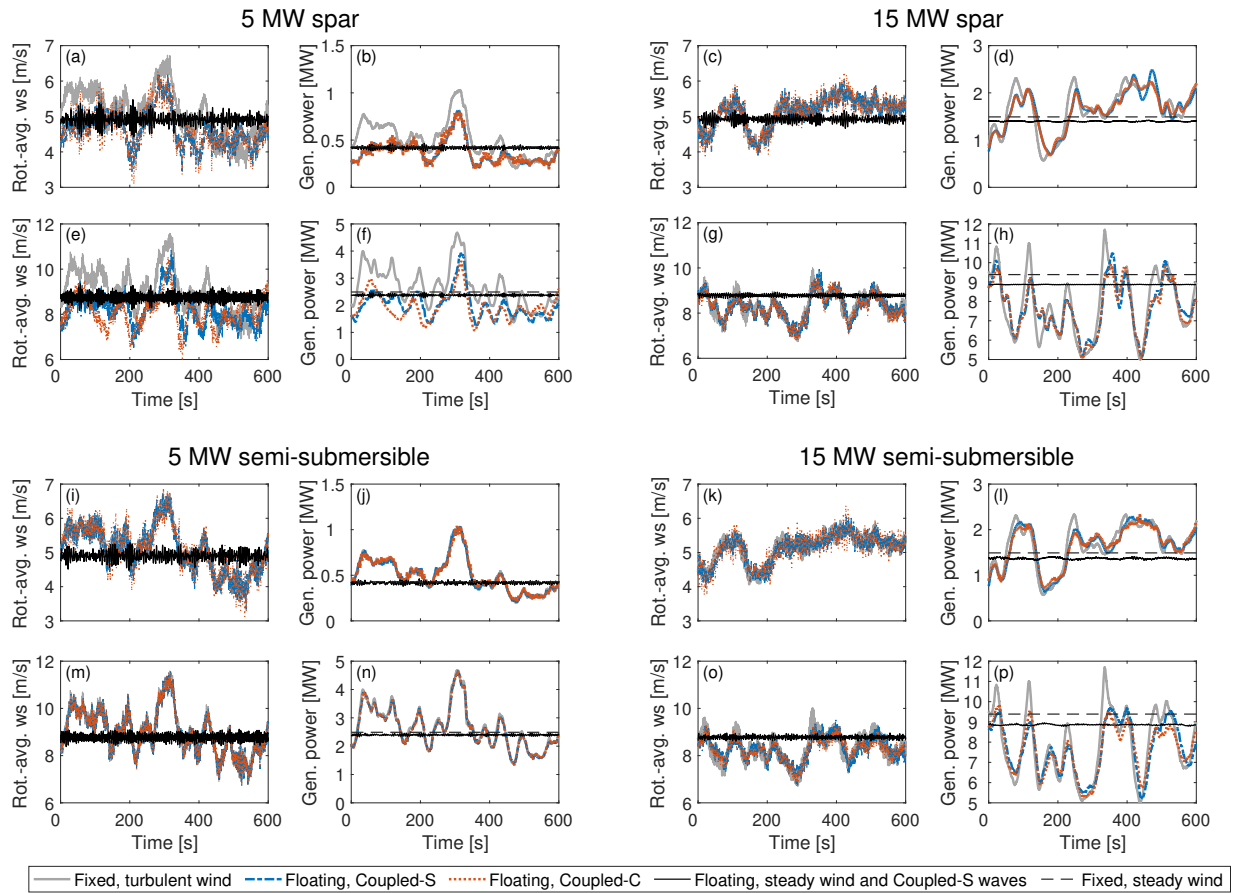


**Figure 15.** The along-wind structural velocity of the hub for the four floating wind turbines is compared to the wind speed at hub height. (a), (b), (e), (f) mean wind speed of 5 m/s. (c), (d), (g), (h) mean wind speed of 9 m/s.

The composition of wind speed with structural velocity of the blades results in the rotor-averaged wind speed  $V_{r,avg}$  that is examined in Fig. 16 together with the time series of  $P_g$ , considering the same wind speeds and wave conditions of Fig. 15. The parameter  $V_{r,avg}$  is computed by averaging the local relative velocity at the blade sections used in the aerodynamic model of



450 OpenFAST. It is an indicator of the energy available for the rotor to be converted in electric power and, as it is shown in Eq. 2-3 where  $V_r = V_{r,avg}$ , its fluctuating component may lead to increased generated power.



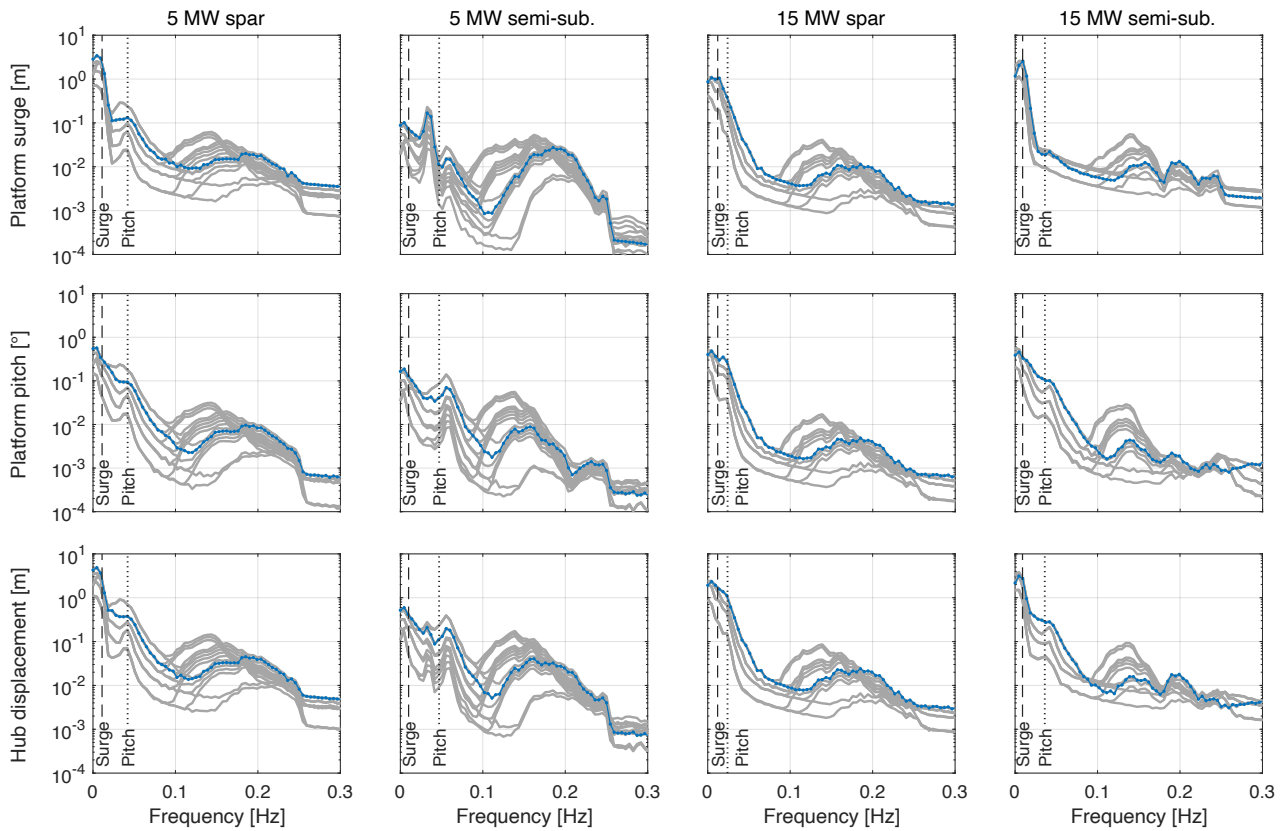
**Figure 16.** Effect of wind turbulence and waves on the power conversion process of the four floating wind turbines: time series of rotor-averaged wind speed and generated power. (a), (b), (c), (d), (i), (j), (k), (l) mean wind speed of 5 m/s. (e), (f), (g), (h), (m), (n), (o), (p) mean wind speed of 9 m/s.

In all four FOWTs, the average power with steady wind is lower with a floating foundation and waves than with a fixed foundation, thus the energy of waves is not enough to compensate for the reduction of rotor area projection due to floating platform static-mean tilt. With stochastic wind,  $V_{r,avg}$  and  $P_g$  have low-frequency fluctuations significantly larger than those  
 455 due to waves only that are seen in cases with steady-wind and Coupled-S waves; the low-frequency fluctuations of  $V_{r,avg}$  are mainly due to changes in wind speed caused by turbulence on blades. As seen in Fig. 16 the impact of wind turbulence on the kinetic energy in the wind experienced by rotor and hence on the generated power is dominant over the effect of waves and, in Fig. 16, low-frequency variations of  $V_{r,avg}$  are highly correlated with variations in  $P_g$ . Time series of  $P_g$  in Coupled-C cases,

where misaligned waves excite cross-wind platform motions, ~~is~~are very similar to the corresponding Coupled-S cases. This  
460 further supports the idea that platform movements due to waves have a negligible effect on the wind turbine power output.

At 5 m/s, wind fluctuations increase  $\overline{P_g}$  which is higher than in the steady wind case, as discussed in Fig. 9. This effect of  
turbulence vanishes for higher wind speeds, and  $\overline{P_g}$  of turbulent wind cases with a 9 m/s mean wind speed is slightly lower  
than with steady wind: this is clearly seen in Fig. 16h and in Fig. 16p. In all cases of Fig. 16, the average power generated  
with a floating platform and waves is slightly lower than with a fixed tower bottom. In the 5 MW semi-submersible FOWT,  
465  $P_g$  of the Coupled-S case is overlapped to  $P_g$  of the fixed case with turbulent wind and the two time series have very close  
average values. The negligible reduction of  $\overline{P_g}$  for the 5 MW semi-submersible compared to the fixed case is because the 5 MW  
semi-submersible has the smallest ~~static~~static-mean tilt among the four FOWTs. The 5 MW spar has the largest ~~static~~static-mean tilt (e.g.,  
at 9 m/s the 5 MW spar has a ~~pitch-rotation~~pitch-rotation-mean tilt of  $3^\circ$  whereas the 5 MW semi-submersible has a ~~pitch-rotation~~pitch-rotation-mean  
tilt of  $1.2^\circ$ ) and in Fig. 16b-c it has a significant reduction of  $\overline{P_g}$  compared to the fixed case. The two 15 MW floating wind  
470 turbines are in between the 5 MW spar and the 5 MW semi-submersible.

Results of Fig. 16 can be connected to those obtained with the Harm-M simulations examining the FOWTs motion in the  
frequency domain. Figure 17 shows the spectra of platform surge, platform pitch, and hub longitudinal motions obtained in  
Coupled-S simulations, that is, when wind and waves are aligned to the main axis of the platform and produce the maximum  
displacements in the wind direction. According to Harm-W simulations of Fig. 13 this condition is the most favorable to have  
475 higher rotor power. The spectra with 9 m/s mean wind speed, the same wind speed examined in Fig. 11 for the Harm-M  
simulations, are highlighted in blue. For all floating wind turbines, the maximum amplitude of motion is in correspondence  
of the platform surge and pitch natural frequencies. The 5 MW spar has the maximum motion amplitude of all FOWTs: the  
surge peak amplitude is 3.4 m at 0.01 Hz and the pitch peak amplitude is  $0.57^\circ$  at 0.01 Hz; their composition gives a peak hub  
displacement of 4.8 m. Compared to Fig. 11, these motions give a relative wind speed at hub lower than 0.5 m/s which is not  
480 enough to cause meaningful increments of generated power. In the wave frequency range (0.1-0.2 Hz), the motion spectra of  
Fig. 17 are generally lower than 0.1 m and  $0.1^\circ$  for platform surge and pitch, and lower than 0.1 m for hub displacement: if  
compared to Fig. 11, these motion amplitudes are again not enough to significantly increase the rotor average power.

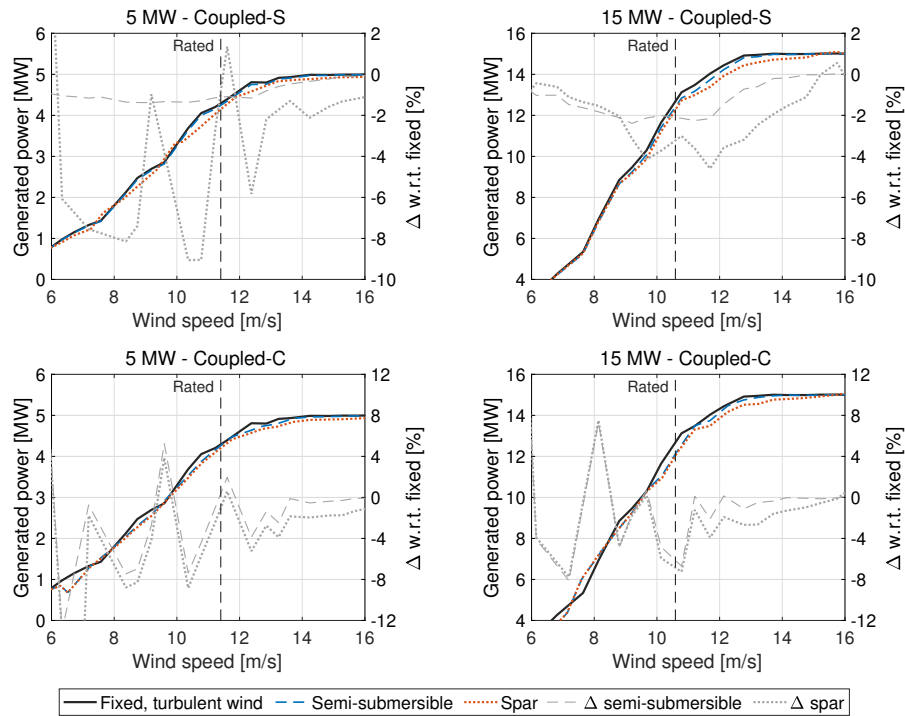


**Figure 17.** Spectra of platform surge, platform pitch, and hub longitudinal motions in Coupled-S simulations with below rated wind speeds (i.e., up to 11 m/s for the 5 MW floating wind turbines and up to 9 m/s for the 15 MW floating wind turbines). Spectra from simulations with 9 m/s mean wind speed,  $H_s = 2$  m,  $T_p = 5$  s are highlighted in blue. Vertical lines mark the natural frequencies of the platform surge and pitch modes of the floating wind turbines with still air (see Table 3).

### 3.5.2 Site-specific power curves and AEP

Information about power generated by the four floating wind turbines is summarized with site-specific power curves and AEP estimates that are computed with the algorithm described in Appendix C.

Figure 18 shows the site-specific power curves from Coupled-S and Coupled-C simulations of the four FOWTs and of the fixed tower bottom case. The fixed case has the same turbulent wind of the spar and semi-submersible cases and adopts the same control strategy of the floating wind turbines.



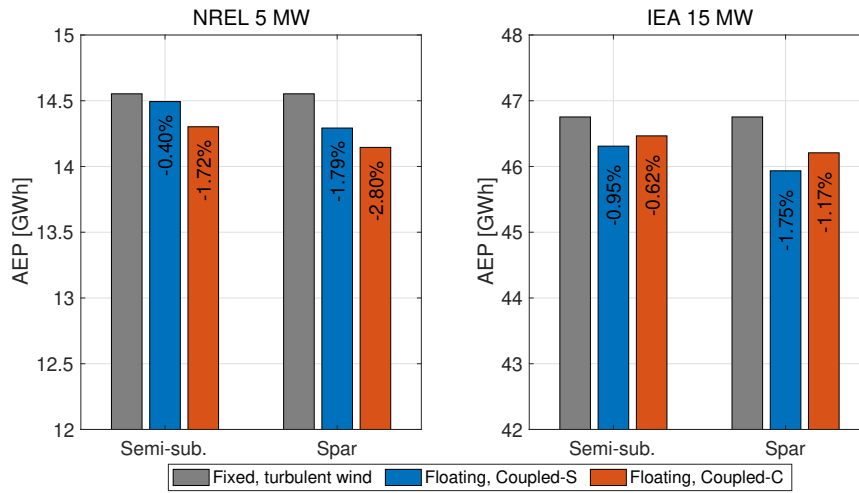
**Figure 18.** Site-specific power curves of the NREL 5 MW and IEA 5 MW wind turbines with a fixed, a semi-submersible, and a spar foundations and percent variations of the power generated in a floating case compared to a fixed tower-base case with turbulent wind ( $\Delta$ ).

With a floating foundation and stochastic waves the power curve is generally lower than in the fixed case, especially in the below rated region. Above the rated wind speed, the power of the floating wind turbines increases and reaches the same value of the fixed case. In Coupled-S simulations of the 15 MW floating wind turbines and of the 5 MW semi-submersible, the power loss with respect to the fixed case increases across the partial-load region up to the rated wind speed and becomes negligible in the full-load region, where the turbine power is saturated at [the wind turbine nameplate capacity its rated value](#). In these three case, the power loss could be ascribed to the platform [static mean](#) tilt, because it follows the same trend of the turbine thrust curve (see Fig. 3) and is minimum for the 5MW semi-submersible which has the smallest pitch rotation among the FOWTs we studied.

There are no clear trends in the Coupled-C cases and in the Coupled-S simulations of the 5 MW spar, especially in low wind speeds. In some wind speed bins, the Coupled-C power curves are above the fixed case. At 9 m/s, the power curve of the 5 MW spar obtained from Coupled-C simulations is above the fixed case, but the time series of generated power of Fig. 16n show the spar average power is lower than with fixed foundation. Thus, fluctuations in the power curves obtained from Coupled-C simulations are attributed to the methodology for computing the site-specific power curve rather than the wind turbine response. Although we have not analyzed the sensitivity of the power curve to the number of clusters, we expect these oscillations to

be smaller if the number of simulations is increased and if the environmental conditions are extracted from a larger dataset covering more uniformly the wind speed operating range of the wind turbines.

505 The AEP estimates of the four FOWTs with different modeling of wind and waves are reported in Fig. 19. In all cases the energy production with a floating foundation and waves is lower than in the fixed tower-bottom case. Simulations with regular waves show the increment of generated power due to wave-driven motion is around 0.1% for a typical wave spectrum and this small gain is not enough to offset the power loss due to platform tilt commented in Fig.7. The AEP obtained from simulations with wind-wave misalignment (Coupled-C) is close to the case with aligned wind and waves (Coupled-S). The  
 510 small differences are attributed to the AEP estimation algorithm rather than a different physics of the power conversion process of the floating wind turbines, as already observed regarding the power curves of Fig. 18.



**Figure 19.** Annual energy production (AEP) of the NREL 5 MW and IEA 5 MW wind turbines obtained with a fixed foundation and turbulent wind, with semi-submersible and spar foundations from the Coupled-S and Coupled-C simulation scenarios. The percent variation of AEP with respect to the fixed case is reported on top of the bars.

### 3.5.3 Concluding the analysis of results with stochastic wind and waves

In realistic sea conditions the action of waves does not change significantly the power generated by the four floating wind turbines object of this study because it does not produce motions that are large enough. The FOWTs energy yield is lower than  
 515 a bottom-fixed wind turbine, in particular their power curve is reduced near the rated wind speed due to the platform **static mean** tilt. In realistic environmental conditions, the power output is driven by wind turbulence rather than waves.

Variations of the power curve due to uncertainty in the shear exponent and turbulence intensity are comparable to the power losses of a FOWT with respect to a bottom-fixed turbine. A recent study of Wiley et al. (2023) shows that turbulent wind speed standard deviation is the single parameter with the highest impact on rotor loads and global motions for the DeepCwind

520 semi-submersible, confirming that a detailed knowledge of the wind environment is needed when assessing the response of floating wind turbines.

The dataset at our disposal covers a time span shorter than what is normally considered in the energy assessment of a wind power plant; wind speed values are low for an area generally seen as quite favorable for the development of floating wind projects, possibly due to the Marignane weather station being located onshore. This is likely to affect the AEP value that may  
525 underestimate the true energy potential of the sea site. However, our interest was primarily in understanding the impact of waves and platform motions on energy production. The dataset covers a winter period when waves are generally stronger, thus ~~conclusion~~ conclusions are expected to be valid also if a larger dataset is analyzed.

#### 4 Conclusions

A floating wind turbine rotor normally undergoes large movements permitted by the platform compliance and it may operate  
530 differently than with a fixed foundation. Waves introduce energy in the system forcing the rotor to move which can potentially increase the generated power.

To understand how waves and platform dynamics impact the power production of a floating wind turbine we carried out multi-physics simulations of four FOWTs of 5-15 MW with spar and semi-submersible support structures. We used four simulation models of increasing complexity that gradually move from simple analytical calculations to a non-linear aero-  
535 servo-hydro-elastic model reproducing a realistic scenario with stochastic wind and waves in the Mediterranean Sea.

The main findings of this research are:

1. large along-wind motions can increase the rotor power, but these movements are prevented by the current design philosophy of semi-submersible and spar platforms;
2. the energy production of the floating wind turbines examined in this study is lower than for a fixed turbine in equal wind  
540 conditions;
3. wind modeling is more important than wave modeling for correct estimation of a floating wind turbine power production, at least for a site with met-ocean conditions similar to the one we considered here.

Concerning the first finding, we have shown that power gains due to motions in the wind direction (e.g., surge and pitch) driven by waves are possible only in below-rated wind speeds because in the above rated region power is saturated by the wind  
545 turbine controller. The increment in average power is proportional to the amplitude and frequency of platform movement and it is maximum when the rotor moves in the along wind direction. Instead, with wind-wave misalignment, part of the wave energy is used to excite cross-wind motions that do not contribute to increasing the energy of the flow available for the rotor to be converted in electric power. Taking into account the hydrodynamic loads and the platform dynamic response we see wave excitation is generally not strong enough to achieve the large movements required to have a significant rise of generated power.  
550 Large movements at the linear wave frequency are required to increase the power output of a wind turbine rotor. These do not occur in practice because the maximum amplitude motions are at the rigid body motion modes of the platform that are

generally at very low frequencies. The decision to design platforms to have the low-frequency modes tends in the direction of minimizing the motions due to wave loads, so as to reduce the dynamic excitation for the turbine components and extend the fatigue life of the system as much as possible.

555 Concerning the second finding, the lower performance of a floating wind turbine compared to a bottom-fixed one is mainly due to the ~~static-mean~~ tilt of the floater, caused by the combination of thrust force and high compliance of floating foundations, and the consequent reduction of rotor area projection on the vertical plane. It should be verified if these findings are also valid for tension-leg platform (TLP) systems, which tend to have higher frequency and smaller ~~amplitude~~ motions.

560 About the third finding, we realized that information about wind parameters, such as shear and turbulence, might be scarce in the early stage of floating wind projects and this lack of data should be addressed properly when evaluating the energy potential of a floating wind plant. At the same time, the energy evaluation process can be simplified considering a reduced number of wave conditions. Future work should prove if this is true also for sites characterized by different environmental parameters (e.g., stronger waves).

565 A wind turbine power curve is influenced significantly by the wind turbine control strategy and floater restoring characteristics which must be modeled in energy calculations. This is important for the individual machines, but also for wind farm modeling, where the power curve is often used in engineering tools as a simplified representation of the turbine response (e.g., in FLOW Redirection and Induction at Steady state FLORIS (NREL (2023b))).

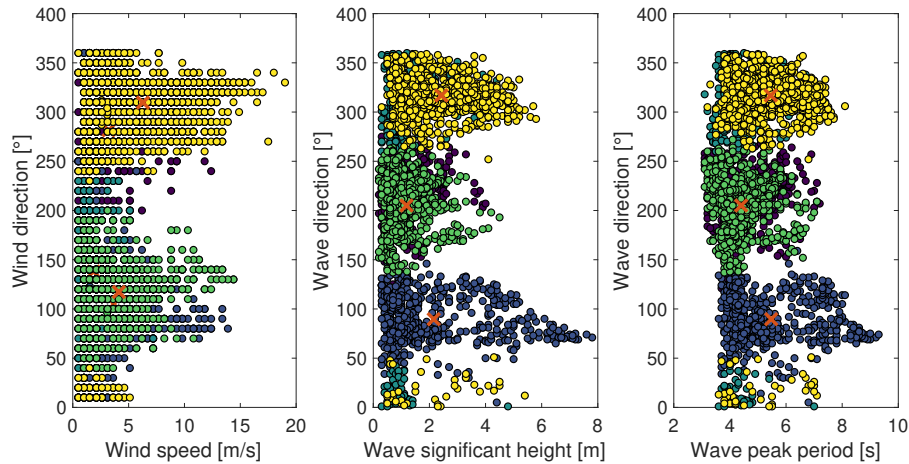
570 As we have shown, it is not possible to exploit the energy of waves with the current technology of semi-submersible and spar-buoy floating wind turbines not integrating wave energy conversion devices. Future designs may explore the trade-off between loads and increased power and see if it is feasible to leverage the peculiar physics of a floating rotor to harvest more energy and further decrease the cost of floating wind.

*Data availability.* The OpenFAST models and the results of simulations can be accessed via Fontanella et al. (2024).

## Appendix A: Example of KMA clustering

575 The K-means algorithm introduced in Sect. 2.1.4 is applied to the dataset of the Golf de Fos site presented in Sect. 2.3 to extract  $M = 5$  clusters. The number of clusters used in this example is lower than in Coupled-C simulations, where  $M = 36$ , to facilitate interpretation of the result.

Figure A1 shows the KMA output. Each dot is one of the 3362 conditions in the dataset represented in the five-dimensional space  $\mathbf{x} = \{U, \beta, H_s, T_p, \theta\}$ . Dots are colored according to the cluster to which they are assigned by the KMA. As visible, dots of the same color share similar features, for example yellow dots are sea states with:  $\beta = [250^\circ - 50^\circ]$ ,  $\theta = [270^\circ - 50^\circ]$ . In the KMA, each cluster is represented by its centroid, marked by a  $\times$ .



**Figure A1.** Met-ocean data (wind speed, wind direction, wave significant height, wave peak period, wave direction) of the Gulf de Fos site are divided into clusters with the K-means algorithm. Datapoints are colored according to the cluster to which they are assigned and clusters centroids are marked by the  $\times$ .

580

As we see, if the number of clusters is too low, as in this example, centroids do not represent accurately the dataset features. In the yellow cluster there is no distinction of wind speed, wave height or wave period, which span a large range and sometimes are quite far from those of the cluster centroid.

## Appendix B: Wind and wave conditions from clustering

585 The environmental conditions of Coupled-S simulations are summarized in Table B1 and those of Coupled-C simulations in Table B2.



**Table B1.** Wind and wave conditions of the Coupled-S simulations (“w. s.” is wind speed).

Case ID	Mean w. s. [m/s]	Wave height [m]	Wave period [s]
1	3.0	1.2	5.0
2	3.0	1.2	6.0
3	3.0	1.2	4.0
4	5.0	1.5	5.0
5	5.0	1.5	6.0
6	5.0	1.5	4.0
7	7.0	1.7	6.0
8	7.0	1.7	5.0
9	7.0	1.7	7.0
10	9.0	2.0	6.0
11	9.0	2.0	5.0
12	9.0	2.0	7.0
13	11.0	2.3	6.0
14	11.0	2.3	7.0
15	11.0	2.3	5.0
16	13.0	2.5	6.0
17	13.0	2.5	7.0
18	13.0	2.5	8.0
19	15.0	2.8	6.0
20	15.0	2.8	7.0
21	15.0	2.8	8.0
22	17.0	3.0	7.0
23	17.0	3.0	6.0
24	17.0	3.0	8.0
25	19.0	3.3	7.0
26	19.0	3.3	6.0
27	19.0	3.3	8.0
28	21.0	3.5	7.0
29	21.0	3.5	8.0
30	21.0	3.5	9.0
31	23.0	3.8	7.0
32	23.0	3.8	8.0
33	23.0	3.8	9.0
34	25.0	4.0	7.0
35	25.0	4.0	8.0
36	25.0	4.0	9.0

**Table B2.** Wind and wave conditions identified by means of K-means clustering and used for the Coupled-C simulations (“w. s.” is wind speed, “Count” is the number of datapoints in each cluster).

Cluster ID	Mean w. s. [m/s]	Wind direction [°]	Wave height [m]	Wave period [s]	Wave direction [°]	Count [–]
1	3.0	137	0.8	4.0	273	69
2	3.0	257	1.0	4.2	342	65
3	3.0	11	1.6	4.8	298	55
4	3.0	148	0.7	4.4	79	38
5	3.5	256	0.6	3.7	229	77
6	3.5	268	0.9	4.4	172	70
7	4.0	203	1.2	4.9	209	63
8	4.0	141	0.7	4.1	118	50
9	4.0	269	1.1	4.2	302	60
10	4.0	352	1.4	4.6	337	96
11	4.0	317	1.3	4.6	239	50
12	4.5	71	0.9	4.3	135	55
13	4.5	75	1.2	4.8	82	27
14	4.5	118	1.5	5.0	71	70
15	4.5	127	0.6	3.9	168	98
16	4.5	343	6.0	8.2	74	24
17	5.0	348	3.6	6.4	32	42
18	5.5	350	3.3	6.2	324	46
19	5.5	85	1.4	4.7	225	124
20	6.0	135	1.4	4.7	213	111
21	6.0	313	1.4	4.6	310	142
22	6.0	93	0.9	4.1	191	105
23	6.5	316	2.9	5.9	313	49
24	6.5	310	1.5	4.7	351	68
25	6.5	74	3.8	7.1	108	102
26	8.5	104	1.8	5.2	107	73
27	9.0	273	1.6	5.3	224	53
28	9.5	270	2.1	5.5	269	50
29	10.0	284	1.9	5.0	313	123
30	11.5	126	1.4	4.5	186	47
31	13.0	86	5.3	7.8	85	114
32	13.0	298	3.0	5.9	315	127
33	13.5	319	2.1	5.2	316	28
34	15.5	280	4.1	6.8	302	49
35	15.5	141	2.9	5.9	178	56
36	17.5	325	3.9	6.6	316	135

## Appendix C: Site-specific power curve and annual energy production

The site-specific power curve and the AEP are derived according to the algorithm of the IEC 61400-12 standard (International Electrotechnical Commission (2022)) based on time series of hub-height wind speed and generated power.

590 Time series of wind speed and generated power are divided into 10 min segments and, for each segment, the mean value is computed. The dataset of 10 min-mean values is sorted using the method of bins:

1. the wind speed range is divided in 0.5 m/s contiguous bins centered on multiples of 0.5 m/s and the dataset is distributed inside the bins according to the 10 min-mean wind speed;
2. the dataset must cover a wind speed range extending from 1 m/s below cut-in to 1.5 times the wind speed at 85% of the  
595 wind turbine rated power. Otherwise, for pitch-controlled wind turbines as the NREL 5 MW and the IEA 15 MW, the power curve is considered complete when the rated power is reached and the average power does not change by more than 0.5% of the power, or 5 kW, for three consecutive wind speed bins. If the power curve does not include data up to cut-out wind speed, the power curve is extrapolated from the maximum complete wind speed to cut-out wind speed;
3. the dataset is considered complete when each bin includes a minimum of 30 min of sampled data. For incomplete bins,  
600 the bin value is estimated by linear interpolation from the two adjacent complete bins.

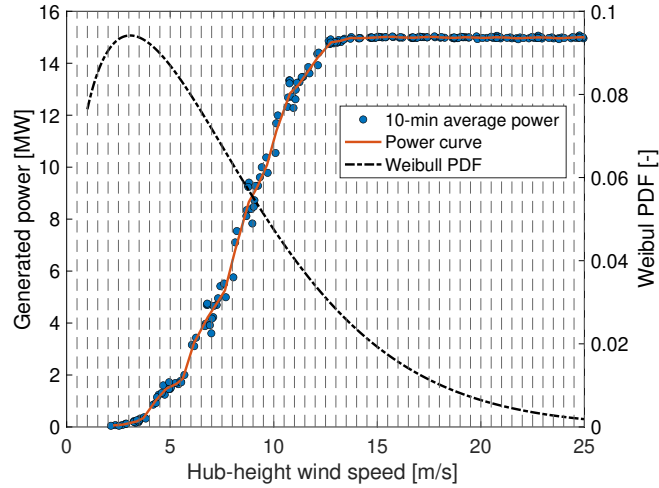
The power curve (i.e., power as a function of wind speed) is determined based on the hub-height wind speed of each bin:

$$V_i = \frac{1}{N_i} \sum_{j=1}^{N_i} V_{n,i,j}, \quad (C1)$$

where  $V_i$  is the average wind speed in bin  $i$ ,  $V_{n,i,j}$  is the wind speed of the data point  $j$  in bin  $i$ ,  $N_i$  is the number of 10 min data points in the bin  $i$ . The power of each bin is:

$$605 \quad P_i = \frac{1}{N_i} \sum_{j=1}^{N_i} P_{n,i,j}, \quad (C2)$$

where  $P_i$  is the average power in bin  $i$ ,  $P_{n,i,j}$  is the power of the data point  $j$  in bin  $i$ ,  $N_i$  is the number of 10 min data points in bin  $i$ . An example of power curve obtained with the method of bins is reported in Fig. C1.



**Figure C1.** Construction of the site-specific power curve from simulations of the Coupled-S or Coupled-C scenarios. Time series of generated power obtained from OpenFAST simulations are divided into 10 min sub-histories and dots are the corresponding mean values.

The AEP is evaluated combining the power curve obtained with the method of bins with the wind speed frequency distribution as:

$$610 \quad \text{AEP} = N_h \sum_{i=1}^N (F(V_i) - F(V_{i-1})) \left( \frac{P_{i-1} + P_i}{2} \right), \quad (\text{C3})$$

Where AEP is the annual energy production,  $N_h = 8760$  is the number of hours in one year,  $N$  is the number of bins,  $V_i$  is the average wind speed in bin  $i$ ,  $P_i$  is the average power of bin  $i$ ,  $F(V_i)$  is the site-specific Weibull cumulative probability distribution function for wind speed (i.e., the one of Fig. 5 in the case of this paper). The summation in Eq. C3 is initiated setting  $F(V_{i-1}) = V_i - 0.5$  and  $P_{i-1} = 0$ .

615 *Author contributions.* AF contributed to conceptualization, investigation, methodology, software, visualization, and writing – original draft preparation. GC contributed to conceptualization, investigation, methodology, software, and writing – original draft preparation. MDP contributed to methodology, investigation, software, and writing – original draft preparation. SM contributed to supervision, project administration, and writing – review and editing. MB contributed to conceptualization, funding acquisition, supervision, and writing – review and editing.

620 *Competing interests.* The authors declare that they have no conflict of interest.

## References

- Abbas, N. J., Zalkind, D. S., Pao, L., and Wright, A.: A reference open-source controller for fixed and floating offshore wind turbines, *Wind Energy Science*, 7, 53–73, <https://doi.org/10.5194/wes-7-53-2022>, <https://wes.copernicus.org/articles/7/53/2022/>, 2022.
- Allen, C., Viselli, A., Dagher, H., Goupee, A., Gaertner, E., Abbas, N., Hall, M., and Barter, G.: Definition of the UMaine VoltumUS-S Reference Platform Developed for the IEA Wind 15-Megawatt Offshore Reference Wind Turbine, Technical Report NREL/TP-5000-76773, <https://www.nrel.gov/docs/fy20osti/76773.pdf>, Available at <https://www.nrel.gov/docs/fy20osti/76773.pdf>, 2020.
- Allen, C., Viselli, A., Dagher, H., Goupee, A., Gaertner, E., Abbas, N., Hall, M., and Barter, G.: UMaine VoltumUS-S Reference Platform, <https://github.com/IEAWindTask37/IEA-15-240-RWT/tree/master/OpenFAST>, 2023.
- Amaral, R., Laugesen, K., Masciola, M., von Terzi, D., Deglaire, P., and Viré, A.: A frequency-time domain method for annual energy production estimation in floating wind turbines, *Journal of Physics: Conference Series*, 2265, 042 025, <https://doi.org/10.1088/1742-6596/2265/4/042025>, <https://dx.doi.org/10.1088/1742-6596/2265/4/042025>, 2022.
- Arthur, D. and Vassilvitskii, S.: K-Means++: The Advantages of Careful Seeding, in: *Proceedings of the Eighteenth Annual ACM-SIAM Symposium on Discrete Algorithms, SODA '07*, p. 1027–1035, Society for Industrial and Applied Mathematics, USA, 2007.
- Bachynski, E. E., Kvittem, M. I., Luan, C., and Moan, T.: Wind-Wave Misalignment Effects on Floating Wind Turbines: Motions and Tower Load Effects, *Journal of Offshore Mechanics and Arctic Engineering*, 136, 041 902, <https://doi.org/10.1115/1.4028028>, <https://doi.org/10.1115/1.4028028>, 2014.
- Branlard, E., Shields, M., Anderson, B., Damiani, R., Wendt, F., Jonkman, J., Musial, W., and Foley, B.: Superelement reduction of substructures for sequential load calculations in OpenFAST, *Journal of Physics: Conference Series*, 1452, 012 033, <https://doi.org/10.1088/1742-6596/1452/1/012033>, <https://dx.doi.org/10.1088/1742-6596/1452/1/012033>, 2020.
- Campos, A., Molins, C., Gironella, X., and Trubat, P.: Spar concrete monolithic design for offshore wind turbines, *Proceedings of the Institution of Civil Engineers - Maritime Engineering*, 169, 49–63, <https://doi.org/10.1680/jmaen.2014.24>, <https://doi.org/10.1680/jmaen.2014.24>, 2016.
- Camus, P., Mendez, F. J., Medina, R., and Cofiño, A. S.: Analysis of clustering and selection algorithms for the study of multivariate wave climate, *Coastal Engineering*, 58, 453–462, <https://doi.org/https://doi.org/10.1016/j.coastaleng.2011.02.003>, <https://www.sciencedirect.com/science/article/pii/S0378383911000354>, 2011.
- Cioni, S., Papi, F., Pagamonci, L., Bianchini, A., Ramos-García, N., Pirrung, G., Corniglioni, R., Lovera, A., Galván, J., Boisard, R., Fontanella, A., Schito, P., Zasso, A., Belloli, M., Sanvito, A., Persico, G., Zhang, L., Li, Y., Zhou, Y., Mancini, S., Boorsma, K., Amaral, R., Viré, A., Schulz, C. W., Netzband, S., Soto-Valle, R., Marten, D., Martín-San-Román, R., Trubat, P., Molins, C., Bergua, R., Branlard, E., Jonkman, J., and Robertson, A.: On the characteristics of the wake of a wind turbine undergoing large motions caused by a floating structure: an insight based on experiments and multi-fidelity simulations from the OC6 project Phase III, *Wind Energy Science*, 8, 1659–1691, <https://doi.org/10.5194/wes-8-1659-2023>, <https://wes.copernicus.org/articles/8/1659/2023/>, 2023.
- Clifton, A., Daniels, M. H., and Lehning, M.: Effect of winds in a mountain pass on turbine performance, *Wind Energy*, 17, 1543–1562, <https://doi.org/https://doi.org/10.1002/we.1650>, <https://onlinelibrary.wiley.com/doi/abs/10.1002/we.1650>, 2014.
- Cottura, L., Caradonna, R., Novo, R., Ghigo, A., Bracco, G., and Mattiazzo, G.: Effect of pitching motion on production in a OFWT, *Journal of Ocean Engineering and Marine Energy*, 8, 319 – 330, <https://doi.org/10.1007/s40722-022-00227-0>, <https://www.scopus.com/inward/record.uri?eid=2-s2.0-85132638963&doi=10.1007%2fs40722-022-00227-0&partnerID=40&md5=ad3684f562590d9cf27f6c7ca5c64a95>, 2022.

- EMODnet: EMODnet Bathymetry World Base Layer, <https://emodnet.ec.europa.eu/en/bathymetry>, 2023.
- 660 Fleming, P. A., Peiffer, A., and Schlipf, D.: Wind Turbine Controller to Mitigate Structural Loads on a Floating Wind Turbine Platform, *Journal of Offshore Mechanics and Arctic Engineering*, 141, 061 901, <https://doi.org/10.1115/1.4042938>, <https://doi.org/10.1115/1.4042938>, 2019.
- Fontanella, A., Facchinetti, A., Di Carlo, S., and Belloli, M.: Wind tunnel investigation of the aerodynamic response of two 15 MW floating wind turbines, *Wind Energy Science*, 7, 1711–1729, <https://doi.org/10.5194/wes-7-1711-2022>, <https://wes.copernicus.org/articles/7/1711/2022/>, 2022.
- 665 Fontanella, A., Colpani, G., De Pascali, M., Muggiasca, S., and Belloli, M.: OpenFAST models and simulation outputs to assess the impact of waves and platform dynamics on floating wind turbine energy production, <https://doi.org/10.5281/zenodo.10513599>, <https://doi.org/10.5281/zenodo.10513599>, 2024.
- France, M.: Météo-France. Gulf de Lion buoy, [https://donneespubliques.meteofrance.fr/?fond=produit{%&id{\\_}produit=95{%&id{\\_}rubrique=32}](https://donneespubliques.meteofrance.fr/?fond=produit{%&id{_}produit=95{%&id{_}rubrique=32}), 2022.
- 670 Gaertner, E., Rinker, J. and. Sethuraman, L., Zahle, F., Anderson, B., Barter, G., Abbas, N., Meng, F., Bortolotti, P., Skrzypinski, W., Scott, G., Feil, R., Bredmose, H., Dykes, K., Shields, M., Allen, C., and Viselli, A.: Definition of the IEA 15-Megawatt Offshore Reference Wind Turbine, Tech. rep., National Renewable Energy Laboratory, <https://www.nrel.gov/docs/fy20osti/75698.pdf>, Available at <https://www.nrel.gov/docs/fy20osti/75698.pdf>, 2020.
- Hall, M. and Goupee, A.: Validation of a lumped-mass mooring line model with DeepCwind semisubmersible model test data, *Ocean Engineering*, 104, 590–603, <https://doi.org/https://doi.org/10.1016/j.oceaneng.2015.05.035>, <https://www.sciencedirect.com/science/article/pii/S0029801815002279>, 2015.
- Hasselmann, K. F., Barnett, T. P., Bouws, E., Carlson, H. C., Cartwright, D. E., Enke, K., Ewing, J. A., Gienapp, H., Hasselmann, D. E., Kruseman, P., Meerburg, A., Müller, P. M., Olbers, D. J., Richter, K., Sell, W., and Walden, H.: Measurements of wind-wave growth and swell decay during the Joint North Sea Wave Project (JONSWAP), 1973.
- 680 International Electrotechnical Commission: Wind energy generation systems - Part 3-1: Design requirements for fixed offshore wind turbines, IEC 61400-3-1:2019, Tech. Rep. IEC 61400-12-1:2022, International Electrotechnical Commission, <https://webstore.iec.ch/publication/29360>, 2019.
- International Electrotechnical Commission: Wind energy generation systems - Part 12-1: Power performance measurements of electricity producing wind turbines, IEC 61400-12-1:2022, Tech. Rep. IEC 61400-12-1:2022, International Electrotechnical Commission, <https://webstore.iec.ch/publication/68499#additionalinfo>, 2022.
- 685 Jonkman, B., Mudafort, R. M., Platt, A., Branlard, E., Sprague, M., Jonkman, J., Ross, H., Hall, M., Vijayakumar, G., Buhl, M., Bortolotti, P., Ananthan, S., Schmidt, M., Rood, J., Damiani, R., Mendoza, N., Shaler, K., Housner, S., Bendl, K., Carmo, L., Quon, E., Phillips, M. R., Kusuno, N., and Salcedo, A. G.: OpenFAST/openfast: v3.4.1, <https://doi.org/10.5281/zenodo.7632926>, <https://doi.org/10.5281/zenodo.7632926>, 2023.
- 690 Jonkman, B. J.: Turbsim User’s Guide: Version 1.50, <https://doi.org/10.2172/965520>, <https://www.osti.gov/biblio/965520>, 2009a.
- Jonkman, J.: Definition of the Floating System for Phase IV of OC3, NREL/TP-500-47535, <https://www.nrel.gov/docs/fy10osti/47535.pdf>, Available at <https://www.nrel.gov/docs/fy10osti/47535.pdf>, 2009b.
- Jonkman, J., Butterfield, S., Musial, W., and Scott, G.: Definition of a 5-MW reference wind turbine for offshore system development, NREL/TP-500-38060, <https://www.nrel.gov/docs/fy09osti/38060.pdf>, Available at <https://www.nrel.gov/docs/fy09osti/38060.pdf>, 2009.

- 695 Krieger, A., Ramachandran, G. K. V., Vita, L., Alonso, P. G., Almeria, G. G., Berque, J., and Aguirre, G.: D7.2 Design Basis, LIFES50+ Deliverable, [https://lifes50plus.eu/wp-content/uploads/2015/11/D72\\_Design\\_Basis\\_Retyped-v1.1.pdf](https://lifes50plus.eu/wp-content/uploads/2015/11/D72_Design_Basis_Retyped-v1.1.pdf), 2015.
- Mahfouz, M. Y., Molins, C., Trubat, P., Hernández, S., Vigara, F., Pegalajar-Jurado, A., Bredmose, H., and Salari, M.: Response of the International Energy Agency (IEA) Wind 15 MW WindCrete and Activefloat floating wind turbines to wind and second-order waves, *Wind Energy Science*, 6, <https://doi.org/10.5194/wes-6-867-2021>, <https://wes.copernicus.org/articles/6/867/2021/>, 2021.
- 700 Martini, M., Guanche, R., Armesto, J. A., Losada, I. J., and Vidal, C.: Met-ocean conditions influence on floating offshore wind farms power production, *Wind Energy*, 19, 399–420, <https://doi.org/https://doi.org/10.1002/we.1840>, <https://onlinelibrary.wiley.com/doi/abs/10.1002/we.1840>, 2016.
- Meteostat: Marseille - Marignane weather station, <https://meteostat.net/en/station/07650?t=2023-06-12/2023-06-19>, 2022.
- Molins, C., Trubat, P., and Mahfouz, M. Y.: UPC - WINDCRETE OpenFAST model 15MW FOWT - Grand Canary Island, <https://doi.org/10.5281/zenodo.4322446>, <https://doi.org/10.5281/zenodo.4322446>, 2020.
- 705 NREL: ROSCO. Version 2.8.0, <https://github.com/NREL/ROSCO>, 2023a.
- NREL: FLORIS, <https://github.com/NREL/floris>, 2023b.
- Patryniak, K., Collu, M., and Coraddu, A.: Rigid body dynamic response of a floating offshore wind turbine to waves: Identification of the instantaneous centre of rotation through analytical and numerical analyses, *Renewable Energy*, 218, 119–137, <https://doi.org/https://doi.org/10.1016/j.renene.2023.119378>, <https://www.sciencedirect.com/science/article/pii/S0960148123012934>, 2023.
- 710 Renan dos Santos, C., Abdelmoteleb, S.-E., Mendoza, A. S. E., and Bachynski-Polić, E. E.: Control Considerations for Very Large Floating Wind Turbines, *IFAC-PapersOnLine*, 55, 166–171, <https://doi.org/https://doi.org/10.1016/j.ifacol.2022.10.426>, <https://www.sciencedirect.com/science/article/pii/S2405896322024727>, 14th IFAC Conference on Control Applications in Marine Systems, Robotics, and Vehicles CAMS 2022, 2022.
- Robertson, A., Jonkman, J., Masciola, M., Song, H., Goupee, A., Coulling, A., and Luan, C.: Definition of the Semisubmersible Floating System for Phase II of OC4, NREL/TP-5000-60601, <https://www.nrel.gov/docs/fy14osti/60601.pdf>, Available at <https://www.nrel.gov/docs/fy14osti/60601.pdf>, 2014.
- Schelbergen, M., Kalverla, P. C., Schmehl, R., and Watson, S. J.: Clustering wind profile shapes to estimate airborne wind energy production, *Wind Energy Science*, 5, 1097–1120, <https://doi.org/10.5194/wes-5-1097-2020>, <https://wes.copernicus.org/articles/5/1097/2020/>, 2020.
- 720 St. Martin, C. M., Lundquist, J. K., Clifton, A., Poulos, G. S., and Schreck, S. J.: Wind turbine power production and annual energy production depend on atmospheric stability and turbulence, *Wind Energy Science*, 1, 221–236, <https://doi.org/10.5194/wes-1-221-2016>, <https://wes.copernicus.org/articles/1/221/2016/>, 2016.
- van der Veen, G. J., Couchman, I. J., and Bowyer, R. O.: Control of floating wind turbines, in: 2012 American Control Conference (ACC), pp. 3148–3153, <https://doi.org/10.1109/ACC.2012.6315120>, 2012.
- 725 van Kuik, G. A. M., Peinke, J., Nijssen, R., Lekou, D., Mann, J., Sørensen, J. N., Ferreira, C., van Wingerden, J. W., Schlipf, D., Gebraad, P., Polinder, H., Abrahamsen, A., van Bussel, G. J. W., Sørensen, J. D., Tavner, P., Bottasso, C. L., Muskulus, M., Matha, D., Lindeboom, H. J., Degraer, S., Kramer, O., Lehnhoff, S., Sonnenschein, M., Sørensen, P. E., Künneke, R. W., Morthorst, P. E., and Skytte, K.: Long-term research challenges in wind energy – a research agenda by the European Academy of Wind Energy, *Wind Energy Science*, 1, 1–39, <https://doi.org/10.5194/wes-1-1-2016>, <https://wes.copernicus.org/articles/1/1/2016/>, 2016.
- 730 Vanelli, T., Rinker, J., and Zalkind, D. S.: Aeroservoelastic stability of a floating wind turbine, *Journal of Physics: Conference Series*, 2265, 042001, <https://doi.org/10.1088/1742-6596/2265/4/042001>, <https://dx.doi.org/10.1088/1742-6596/2265/4/042001>, 2022.

- 735 Wiley, W., Jonkman, J., Robertson, A., and Shaler, K.: Sensitivity Analysis of Numerical Modeling Input Parameters on Floating Offshore Wind Turbine Loads, *Wind Energy Science Discussions*, 2023, 1–35, <https://doi.org/10.5194/wes-2023-49>, <https://wes.copernicus.org/preprints/wes-2023-49/>, 2023.
- Wiser, R., Rand, J., Seel, J., Beiter, P., Baker, E., Lantz, E., and Gilman, P.: Expert elicitation survey predicts 37% to 49% declines in wind energy costs by 2050, *Nature Energy*, 6, 555–565, <https://doi.org/https://doi.org/10.1038/s41560-021-00810-z>, <https://doi.org/10.1038/s41560-021-00810-z>, 2021.