

Optimizing offshore wind export cable routing using GIS-based environmental heat maps

Joni T. Backstrom¹, Nicholas M. Warden¹, Colleen M. Walsh²

¹Department of Environmental Sciences & Center for Marine Science, University of North Carolina. Wilmington, NC 28403.

²Department of Public and International Affairs, University of North Carolina. Wilmington, NC 28403.

5

*Correspondence to: Joni Thomas Backstrom backstromj@uncw.edu

Key Words: offshore wind, export cables, installation, environmental impacts, North Carolina

10 **Abstract.** In the United States, there are plans to produce up to 30 GW of offshore wind power by the year 2030, resulting in
numerous seabed lease areas which are currently going through the leasing or construction & operations phase. A key challenge
associated with offshore wind is optimal routing and installation of the subsea power cables, which transmit power from the
main offshore wind energy production area to a land-based station, where it connects to the electrical grid. By traversing a vast
extent of the seafloor, the installation and operational phases of subsea power cables have the potential to result in a range of
15 environmental impacts, which may negatively affect sensitive biological, physical and human and/or cultural resource
receptors. Presented here is a case study from southeastern North Carolina to identify optimal seabed cable routes and coastal
landfalls for a recently leased offshore wind farm by using a combination of publicly available data, coupled with standard
environmental impact assessment methodologies and GIS-based heat maps. The study identified a range of high-risk areas, in
addition to a number of potential low risk routes and landfall areas which minimize seabed user conflicts and impacts to
20 environmentally sensitive locations. Although additional high resolution and site specific environmental, geological and
biological surveys are required to develop a robust cable installation plan, the preliminary steps from this research optimizes
early phase marine spatial planning for offshore wind projects and other similar subsea industries.

1.0 Introduction

25 Offshore wind is predicted to grow exponentially across the United States, with a target of 30GW of power by the year 2030
(Energy, 2021). Off coastal North Carolina, which forms the focus of this study, the state has an ambitious wind energy goal
of 2.8 GW of offshore wind energy capacity by the year 2030, which is set by the state's current renewable energy targets
and based on Executive Order No. 218 (NC DEQ, 2023). A key challenge associated with offshore wind includes optimal
routing and installation of the subsea power (export) cables, which transmit power from the main offshore wind energy area
30 to a land-based station, where they connect to the electrical grid. By traversing a vast extent of the seafloor, the installation,
operational and de-commissioning phases of subsea power cables have the potential to result in a range of environmental
impacts, which may negatively affect sensitive biological, physical and human and/or cultural resource receptors (OSPAR,
2012; BOEM, 2023a).

35 Several studies, especially from Europe, have assessed potential effects of export cables on a range of abiotic and biotic marine environments (Worzyk, 2009; Hammar et al, 2014; MMO, 2014; English et al., 2017; Taormina et al., 2018). During the initial export cable installation burial and operational phase, a number of different effects are generated, which include noise, electromagnetic fields (EMF), thermal effects and increases in turbidity. Acoustic disturbances have the potential to alter the behaviour of surrounding organisms, but studies have generally shown a low probability of inflicting bodily harm or mortality on nearly all taxa that have been observed (Nedwell et al., 2012; Mooney et al., 2020). During the operational power transmission phase, EMFs, in addition to thermal effects, emitted by the export cable also have the potential to impact marine life (Gill, 2005; Snyder et al., 2019; Hutchinson et al., 2020). Taormina et al. (2018) identified EMF effects as being a key knowledge gap in offshore wind development. Initial research has shown that benthic species exhibit mixed responses to EMF in lab settings, though behaviour alteration is a consistent outcome (Albert et al., 2020). Cumulative impact assessments have also determined the impacts of EMF to be minor compared to other potential effects associated with subsea power cables (Bergstrom et al., 2014; Copping et al., 2020). Proper cable burial, ideally 1-2 m beneath the seafloor, is known to reduce transmission related EMF effects, in addition to associated thermal effects (Snyder et al., 2019). Where cable burial is not possible due to substrate type, the placement of mattresses, boulders or concrete is a common approach (OSPAR, 2008; BOEM, 2023a).

50 Direct alteration of the seabed and increased suspended sediments are known physical effects attributed to export cable installation (Taormina et al., 2017). These physical changes have the potential to directly and indirectly affect various organisms in the surrounding ecosystem due to the disturbance (Gill, 2005; English et al., 2017). Suspended sediments generated from jetting, trenching and/or plowing during cable installation is known to degrade water quality, result in increased turbidity and may also lead to lethal organism burial and/or associated sub-lethal responses, with potential impacts on surrounding benthic and aquatic organisms (Worzyk, 2009; Bergstrom et al., 2014; Methratta et al., 2021). Increased suspended sediment effects are largely localized, as long-term effects are diminished with increasing distance from the altered seabed areas (Methratta, 2021; English et al, 2017; MMO, 2014). Habitat alteration from stabilizing structures placed on the seabed to reduce cable mobility are known to have a generally positive effect on benthic communities as well as fish populations (Taormina et al., 2017; Perry & Heyman, 2020). The positive socio-economic impacts associated with offshore wind, for example attraction of sessile, benthic and fish species via the artificial reef effect, are evident in the eastern United States, both within recreational fisheries circles and among other ocean users (Voss et al., 2013; Smythe et al., 2021). Positive socio-economic impacts include, for example, increased coastal and marine ecotourism, new recreational diving opportunities and improved fish stocks and fishing grounds in and around the offshore wind farm (OWF). However, some angler and fisher concerns include displacement and over-crowding, although views of anglers are mostly positive (Voss et al., 2013; Smythe et al., 2021).

65 In addition to environmental impacts, submarine hazards pose another challenge for managing risks associated with export cables. Monitoring conducted for other OWF sites, predominantly in northern Europe, has revealed some of the potential effects, and possible mitigation practices, for export cable route planning and installation. In a case study that examined dozens

of OWF's, cable exposure and free span due to scour or improper burial occurred at some offshore wind locations (English et al., 2017). Research has shown that avoidance of submarine geohazards (e.g. steep seabed areas, earthquake prone locations) is critical for cable route selection and infrastructure protection (Carter et al., 2014). Cumulative impact assessments - to reduce potential impacts attributed to other marine activities - using geospatial techniques, is a common approach in offshore wind impact studies (Carter et al., 2014; Lonsdale et al., 2020; Hammar et al., 2020; Choi et al., 2021; Gusatu et al., 2021). Marine spatial planning, by identifying a number of different sea and seabed-users within a confined spatial context using GIS techniques and impact assessments, is critical for successful and sustainable OWF development.

The main aim of this study is to explore the environmental impacts associated with subsea power cable installation and transmission, and to propose monitoring and mitigation techniques to guide optimal subsea power cable routing. This is accomplished using an innovative combination of desktop studies of publicly available data, coupled with standard Environmental Impact Assessment (EIA) methodologies and GIS-based geospatial and modelling methods for a proposed OWF off the coast of southeastern North Carolina. The ultimate aim is to optimize marine spatial planning, minimize ecological impacts and assist with critical coastal and offshore management decision-making during the early phases of OWF development.

2.0 Study Area

The recently leased Carolina Long Bay offshore wind farm, located off the coast of southeastern North Carolina, forms the focus of this study (Figure 1). The Bureau of Ocean Energy Management (BOEM) auctioned off the Carolina Long Bay Wind Energy Area (WEA) to prospective developers on May 11th, 2022. The OWF comprises a 110,000 acre offshore region located approximately 31.5 km (17 nautical miles) offshore Bald Head Island, near the terminus of the Cape Fear River. The proposed OWF is expected to generate 1.3 GW of electricity, providing more than half a million households with power, creating thousands of local jobs, and generating hundreds of millions of dollars in economic revenue. The wind farm will require one or more export (power) cables, connecting the wind turbine substation to a shore-based location for subsequent energy distribution to land based sources (NCTPC, 2021).

For this study, the export cable 'area of interest' extends from Masonboro Island in the northeast to the South Carolina border in the west, and from the coast to as far as 40 km offshore (Figure 1). Coastal southeastern North Carolina comprises a number of developed and undeveloped north-south and east-west oriented transgressive barrier islands, separated by tidal inlets (Cleary, 2001, 1999; Shiflett and Backstrom, 2023). Tourism is a major source of income for the rapidly growing coastal towns. Tides are semidiurnal and microtidal, with a mean tidal range of 1.37 m off Bald Head Island (NOAA, 2023). A 10-year record of wave data obtained from Station 41108 - Wilmington Harbor, NC (NDBC, 2023) reveals significant wave heights (H_s) are approximately 1.0 m with an average dominant wave period (T_d) of 7 seconds; mean wave direction is from the SSE (153 degrees). According to the National Renewable Energy Laboratory, average offshore wind speeds at 90 m elevation within the study area range between 7.5 m/s at the coast to 9.0 m/s at the proposed wind energy area (NREL, 2023).

As a result, average offshore wind speeds in North Carolina are among the most optimal along the eastern United States, and a relatively wide and shallow continental shelf makes it an ideal location for OWF development.

Southeast North Carolina lies directly in the path of North Atlantic tropical systems, creating a possible hazard for OWF development, and has been impacted by numerous hurricanes, most recently by Isaias (Cat 1 - 2020), Dorian (Cat 1, 2019), Florence (Cat 1 – 2018) and Matthew (Cat 1 – 2016) (Figure 1, right). Other destructive hurricanes include Bonnie and Fran (1995) and Category 4 Hazel in 1954. The offshore seabed region comprises numerous Plio-Pleistocene high- to low-relief carbonate hardbottom reefs, often overlain with a thin veneer of sand and gravel (Marcy et al., 1996; Cleary et al., 1996; Backstrom, 2002). Thick regionally expansive sand bodies are not common off southeastern North Carolina and are mostly limited to either localized ancestral paleo-river channel systems or large sand shoals located adjacent to and offshore of the Cape Fear River (Cleary, 1999; Riggs et al., 1995; Backstrom, 2002).

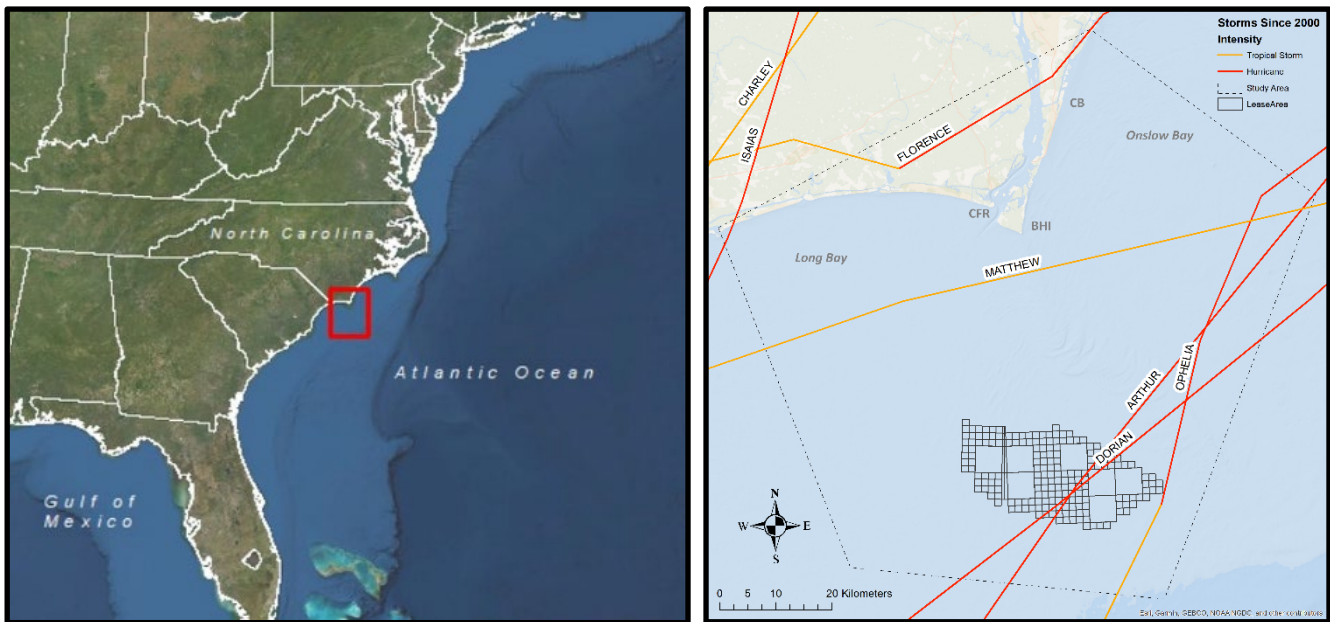


Figure 1: Study Area. The proposed Carolina Long Bay Offshore Wind Farm is located in the north Atlantic Ocean off southeast North Carolina, approximately 31.5 km south of Bald Head Island (BHI). Also shown are recent hurricanes tracks that have impacted the area since 2000 (right). CFR refers to the Cape Fear River mouth (also the location of Jay Bird Shoals) and CB refers to Carolina Beach. Hurricane track data obtained from NOAA. Satellite image (left) courtesy of © Google Maps.

The area eligible for turbine placement covers slightly more than 110,000 acres, with an expected capacity of up to 1.3 GW of wind energy. Carolina Long Bay comprises BOEM’s offshore wind lease areas OCS-A 0545 and OCS-A 0546 on the Atlantic Outer Continental Shelf, which were awarded to Total Energies Renewables USA, LLC and Duke Energy Renewables Wind,

LLC, respectively. This area of southeast North Carolina has a range of protected species, coastal conservation areas, offshore reefs and historical shipwrecks. Additionally, the region is highly susceptible to tropical storms and hurricanes, has limited offshore sediment (apart from Frying Pan Shoals), is an important hub for both fisheries and shipping, and supports a multi-
125 million-dollar tourism industry. The spatial arrangement and distribution of these multiple overlapping receptors across the study area make the routing, installation and operation of subsea power cables particularly challenging.

3.0 Methods

In order to quantify optimum routing and spatial mitigation measures for the export cable, this study uses a three phased approach: i) a desktop study and literature review of publicly available coastal and ocean data for the region and study area;
130 ii) quantifying environmental sensitivity and risk based on standard EIA procedures and iii) using GIS-based spatial and modelling techniques to optimize route planning by combining heat maps and Euclidean Distance tools. Temporal and spatial mitigation techniques are also incorporated into the assessment.

The primary strategy in evaluating optimum cable routing for Carolina Long Bay was by means of an environmental heat map, in essence mapping the intensity of different receptors based on sensitivity (e.g. reefs, protected areas) and areal extent or,
135 conversely, assessing potential impacts to the integrity of the export cables (e.g. shipping and navigation areas). Before generating the heat maps, a thorough review of publicly available BOEM reports, relevant research, published papers, grey literature and other desktop studies was conducted. This allowed a strategy development for the heat map exercise and the choice of relevant data to use in the operations, while also carefully considering all the types of data available (Table 1). Sensitivity values and included datasets in the analysis were determined based on standard EIA methodology, local knowledge
140 and the authors' best judgment. There is naturally some subjectivity to this, and different values and datasets will undoubtedly result in different outcomes. However, it is important to note that this is a 'high-level exercise' that can be adopted by other OWF scientists and managers who may use different values and datasets based on local environmental knowledge, site-specific stakeholder concerns, government regulations and by liaising with topic specific experts.

Environmental review processes for OWF permitting and development consider a wide range of factors, including stakeholder
145 consultation, scoping and environmental impact assessments/statements (BOEM, 2023). To minimize potential impacts from any proposed development, a variety of mitigation measures are required. Depending on the type of impact, often either spatial or temporal mitigation is chosen as the most appropriate option. Certain highly mobile receptors were displayed in the map figures but were excluded from the spatial analysis. For these receptors, the most appropriate management measure does not involve spatial mitigation. Possible temporal mitigation measures or other mitigation strategies for these receptors are
150 discussed in the Results section.

The spatial analysis to produce the heat map follows a basic workflow that was replicated for each GIS layer and performed using ESRI's ArcMap 10.8.2, which highlights corridors exhibiting maximum distances from identified hazards. Each layer that was included in the analysis was imported as a shapefile, which contained vector data within the GIS interface (Table 1). The input layers were subsequently converted into individual raster files, with a 100-meter spatial resolution. A risk value was
155 assigned to each fixed (i.e. non-mobile) spatial layer, based on the anticipated impact from the installation of the export subsea

160 cable on each receptor, or as a hazard to cable laying operations. Risk values were not assigned to highly mobile receptors (e.g. whale migration patterns, Essential Fish Habitat (EFH), hurricanes) due to their temporary presence. Assigning risk values to sensitive receptors based on anticipated impacts is a practice that has been used in offshore wind planning before and is a common approach with Environmental Impact Assessments (Bergstrom et al., 2014; BOEM, 2023a). Marine spatial planning

165 also incorporates many of the design components of our study, primarily by identifying suitable areas for specified uses in the marine environment through minimization of conflict (Lonsdale et al., 2020; Choi et al., 2021). Risk values for our model ranged from one to three (Table 2). A value of ‘1’ was assigned to areas that, without proper avoidance, could lead to minor impacts on receptors, such as temporary area closures or obstacles to other ocean users. For areas where cable construction is expected to lead to major impacts on receptors, either human or ecological, a value of ‘2’ was assigned. Lastly, a value of ‘3’ was given to any areas that represent a major hazard or threat to the integrity of the cable structure itself or cable-laying equipment, or for regions under the jurisdiction of policies which disallow such infrastructure. These areas must be ‘avoided at all costs’ and in most cases, a sufficient spatial buffer/exclusion zone around the hazard must be adhered to. The following tables identify each of the GIS layers that were used as inputs and their associated risk values which were retained in the model (Tables 1 and 2).

170

Table 1: Data sources and description, including recommended mitigation type, for each GIS layer used in the case study. Specific data source links are provided in the Supplementary Table after References.

Data Layer	Source	Description	Mitigation Type
Study Area	Arbitrarily Determined by Authors	Extent of coastal and marine area analyzed for potential export cable routes.	N/A
Wind Energy Area Polygon	BOEM Ocean Reports	Combined lease area for Wilmington Long Bay Wind Energy Area (WEA).	N/A
Tropical Storm Tracks Since 2000	NOAA National Ocean Service	Tracklines for recent hurricanes and tropical storms that have made landfall or passed through the study area.	Temporal
Bathymetry (High Resolution)	BOEM Ocean Reports	High resolution (less than 100 meter) bathymetric dataset.	N/A
Bathymetry Contours	BOEM Ocean Reports	Contours digitized from the bathymetric dataset listed above.	N/A
Bathymetry (Low resolution)	General Bathymetric Chart of the Oceans (GEBCO)	Lower resolution bathymetry.	N/A

Surficial Sediment Texture	BOEM Ocean Reports	Substrate types based on surficial sediment samples from the region.	Spatial
East Coast Sediment Texture Database Sample Points	USGS GIS Data Catalog	Sediment types from core samples taken within the study area.	Spatial
CONMAP Sediment Size Distribution Polygons	USGS GIS Data Catalog	Inferred regions of uniform sediment size based on USGS surveys.	Spatial
F00679 Backscatter Data	NOAA National Ocean Service	Measure of “hardness” or energy reflectivity of seafloor. Indicator of relative substrate type.	Spatial
H11413 Sidescan Data	NOAA National Ocean Service	Surficial seafloor imagery based on acoustic reflectivity, lacking quantitative data.	Spatial
H12930 Backscatter Data	NOAA National Ocean Service	Additional backscatter dataset from different surveys.	Spatial
Essential Fish Habitat (NOAA)	NOAA Fisheries	Areas crucial for reproduction of important fish species.	Spatial and Temporal
Habitat Areas of Particular Concern (NOAA)	NOAA Fisheries	Designated fish habitat areas considered high priority for conservation, management or research.	Spatial and Temporal
Cetacean Biologically Important Areas (Ocean Reports)	BOEM Ocean Reports	Areas where cetacean species are known to concentrate for reproduction, feeding, or migration.	Temporal
Audubon Important Bird Areas	Audubon Society via BOEM Ocean Reports	Distinct areas that provide bird habitat for feeding, migration, or resting.	Temporal
Anchorage Areas	BOEM Ocean Reports	Areas designated on navigation charts where large vessels are permitted to drop and drag an anchor.	Spatial
Artificial Reefs and	Digitized from Captain Seagull’s Fishing Chart	Known areas of hard substrate.	Spatial

Natural Hardbottom			
Shipping Lanes	BOEM Ocean Reports	Federally maintained channels for large vessels.	Spatial and Temporal
Coastal Barrier Resource Areas	BOEM Ocean Reports	Areas affected by the Coastal Barrier Resources Act where development is prohibited.	Spatial
Danger Zones and Restricted Areas	BOEM Ocean Reports	Military operation zones with limited use and development permitted.	Spatial
Protected Areas	BOEM Ocean Reports	State and federally managed lands such as state parks and other natural areas.	Spatial
Inland Navigation Channels	BOEM Ocean Reports	Other federally managed channels and waterways with less marine traffic than shipping channels.	Spatial and Temporal
Ocean Disposal Sites	BOEM Ocean Reports	Designated dredge spoil areas where new dredge material is likely to be placed for future dredge projects.	Spatial and Temporal
Shipwrecks	BOEM Ocean Reports	Verified shipwrecks with archaeological significance.	Spatial

175 **Table 2: Associated risk value for each layer/sensitive receptor included in the spatial model. Value was based on standard EIA/NEPA policy, local environmental knowledge and authors' best judgment. Mobile species (e.g. whales and sharks, EFH) and other temporal mitigation layers are not included.**

Layer Inputs for Heat Map	Associated Risk Value
Anchorage Areas	2
Artificial Reefs and Natural Hardbottom	3
Shipping Lanes	1
Coastal Barrier Resource Areas	3
Danger Zones and Restricted Areas	3
Protected Areas	3

Inland Navigation Channels	2
Ocean Disposal Sites	2
Shipwrecks	3

180 Risk Value Key:

1 - Without avoiding this area, minor impacts are expected (shipping lanes)

2 - Without avoiding this area, major impacts are expected (anchorage areas, ocean disposal sites, navigation channels)

3 - This area must be avoided entirely; contains hazards with the potential to compromise equipment / cable itself; regulations prevent cable laying operations in this area (danger zones/restricted areas; protected areas; shipwrecks/artificial reefs)

185

Risk values for fixed/spatially defined receptors were incorporated into the raster file for each layer by means of the Reclassify tool in ArcMap, which allowed each raster layer to have the risk level populated as its cell value for each cell in the raster. These individual files were subsequently combined into one raster layer covering the entire extent of the study area using the Raster Calculator tool. A blank raster with identical cell sizes and a value of 0 for each cell was added to the operation to

190 function as a background, allowing the output to cover the entire extent of the study area. The output from this tool created a composite heat grid, displaying a value for each cell that represented the total risk associated with that space. Cells that did not contain any hazards or did not overlap with any receptors retained a value of '0', indicating no environmental risk. The heat grid was symbolized according to cell value, highlighting differences in risks associated with export cable operations across the entire study area.

195 The composite heat grid was used as an input for the Euclidean Distance tool to reveal microregions within the study area likely to exhibit minimized impacts to the cable and surrounding environment. With a broad understanding of the distribution of risk factors within the export cable region, possible export cable corridors were digitized according to the maximum distance from surrounding hazards and sensitive receptors.

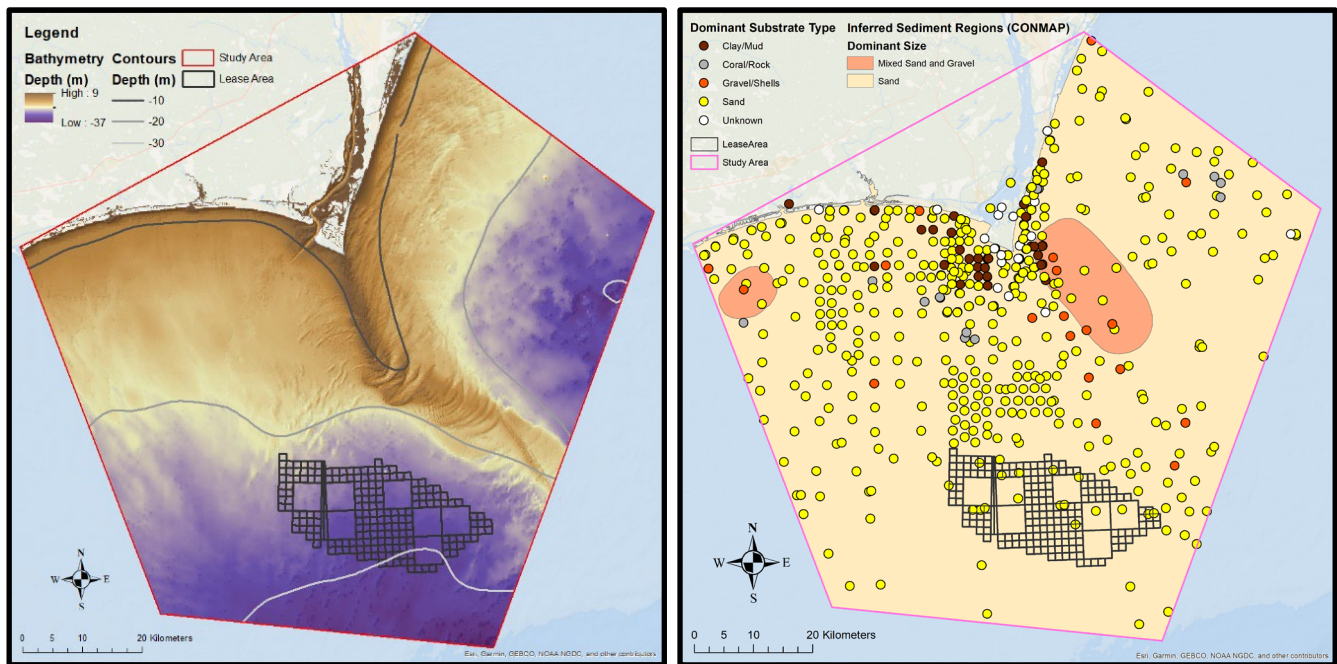
200

4. Results

4.1 Physical Environment

The initial results of the case study reveal several key marine environmental characteristics in which the proposed offshore wind project is set to take place. With the northernmost extent of the WEA located 31.5 km south of the nearest shoreline on

205 Bald Head Island, a substantial area of seabed must be assessed in order to install the export cable. One of the most prominent features of this offshore area is Frying Pan Shoals, a 45-km stretch of sand waves and shallow shoals that measure as little as 3 meters deep in some offshore areas between the WEA and the closest onshore location (Figure 2 - left). Water depths across the region range from less than 10 meters nearshore and along the shoals up to more than 30 meters offshore.



210 **Figure 2: Water depths (left) and seabed sediment distribution (right) within study area. Note the extensive sand shoals extending towards the southeast, approximately between the 10 and 20 m contours, associated with Frying Pan Shoals. The majority of the seabed surficial sediment is comprised of sand, with some smaller areas of mud, gravel, shell and rock. Sources: NOAA (bathymetry) and USGS CONMAP (sediments).**

215 The bathymetric data and contours (Figure 2 - left) clearly show the extent of Frying Pan shoals (extending towards the southeast between the 10 m and 20 m contours), as well as some smaller sand wave fields to the north of the WEA, on the western side of the shoals. Assuming the shallowest of these features are avoided during cable-laying operations, most of the seafloor area that must be covered by the cable falls between 10 and 20 m depths, which is easily manageable by cable installation companies. Bathymetry data is particularly useful in determining the equipment type and installation methods for the export cable.

220

According to the USGS surface sediment database, the seabed sediments within the study area are primarily composed of sand (yellow), although shells and mud (green), in addition to rock and gravel (orange) is also present (Figure 2 - right). A good understanding of sediment cover is especially important when it comes to cable installation methods, in addition to installation vessel anchoring/mooring methods and general benthic characteristics. The presence of natural hardbottom reefs (likely identified as ‘rock’ sediment) throughout the study area is well known and is an important factor to consider in cable routing.

225

Hardbottom, also characterized as essential fish habitat, is discussed separately under Biological Resources. Previous seabed surveys within Long Bay in the late 1990’s, which included extensive sidescan sonar, vibracores and surface sediment sampling, revealed that the shoreface was not a viable source of long-term compatible beach nourishment sand,

instead mostly comprising a mix of thin, muddy sediment layers or hardbottom outcrops (Cleary et al., 2001). The only well-known thick sand bodies include Jay Bird Shoals (situated at the mouth of the Cape Fear River – refer to CFR in Figure 1) and Frying Pan Shoals, located adjacent to or offshore the Cape Fear River inlet respectively (Figure 2 - left). To date, the specific outline and distribution of Frying Pan Shoals has not been contoured or determined by regulatory agencies.

4.2 Biological Resources

The marine environment encompassed by the study area, including some of the coastal areas that could be impacted by the cable landfall location, serve as important habitat for a variety of fish, birds, and mammals (Taylor et al., 2016; BOEM, 2022b). Large sections of the study area are classified as Essential Fish Habitat (EFH) by NOAA. Habitat Areas of Particular Concern (HAPC's) are a subset of EFH that provide especially important ecological functions or face increased vulnerability to degradation. Much of the study area consists of zones that are designated as HAPC's (Figure 3 - left). Where possible, these areas should be avoided during cable routing and installation plans, or at least discussed carefully with the management and conservation agencies in charge of protecting these habitats.

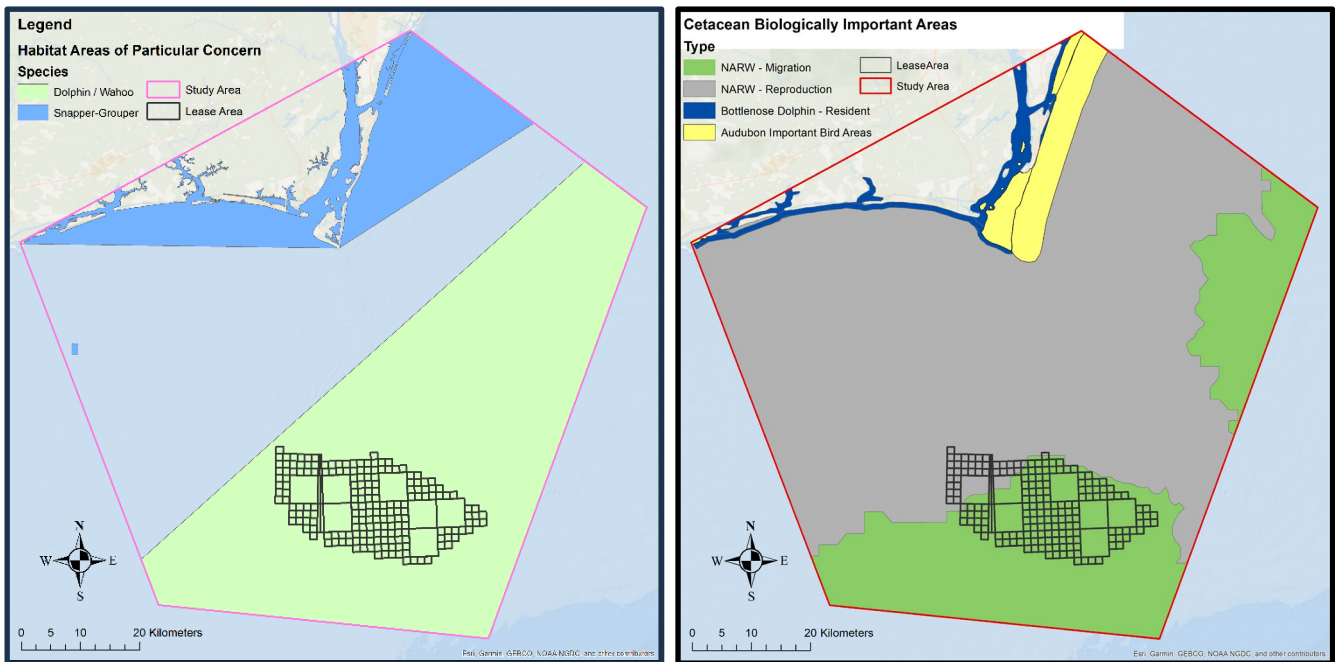


Figure 3: Habitat Areas of Particular Concern (HAPC's - left) and Cetacean Biologically Important Areas (BIA's - right). HAPC's include the Dolphin/Wahoo (green) and Snapper/Grouper fisheries (blue). BIA's include North Atlantic Right Whale migration and reproduction areas (green and grey, respectively), resident Bottlenose Dolphins (dark blue) and designated Audubon Important Bird Areas (yellow).

250 The HAPC's in Figure 3 (left) represent habitat for pelagic species, such as Dolphin/Wahoo Fishery, in addition to commercially important demersal fish species, such as the Snapper/Grouper Fishery, both of which are managed by the South Atlantic Fisheries Management Group (<https://safmc.net/fishery-management/>). Parcels of essential fish habitat (i.e. hardbottom) are also dispersed throughout the study area. Not only do these areas represent important habitat for benthic and fish species, but they also present a challenge to export cable burial capabilities due to the presence of sub-cropping and/or outcropping rock on the seabed.

255 In addition to fish, the study area contains habitat for other classes of marine vertebrates, most notably marine mammals, sea turtles, and birds (Figure 3 - right). Biologically Important Areas (BIAs) for prominent Cetaceans are known to inhabit the area, especially the North Atlantic Right Whale (NARW) and Bottlenose Dolphins. Important coastal bird areas, as designated by Audubon, are also included.

In order to mitigate the effects of export cable installation on NARW migration routes, *temporal mitigation* (i.e. avoiding construction activities when they are known to be present in the region) is recommended. Any proposed cable route near the coast is also highly likely to overlap with Bottlenose Dolphin resident areas and it has the potential to impact important bird areas if landfall is made along the shoreline north of Bald Head Island (Figure 3 - right). Another environmental designation that is relevant to cetacean distribution is the North Atlantic Right Whale Seasonal Management Area (SMA). This is a designated offshore zone that restricts the speed of large vessels during certain months of the year, when Right Whales are known to migrate off the coast of North Carolina (Figure 3 - left).

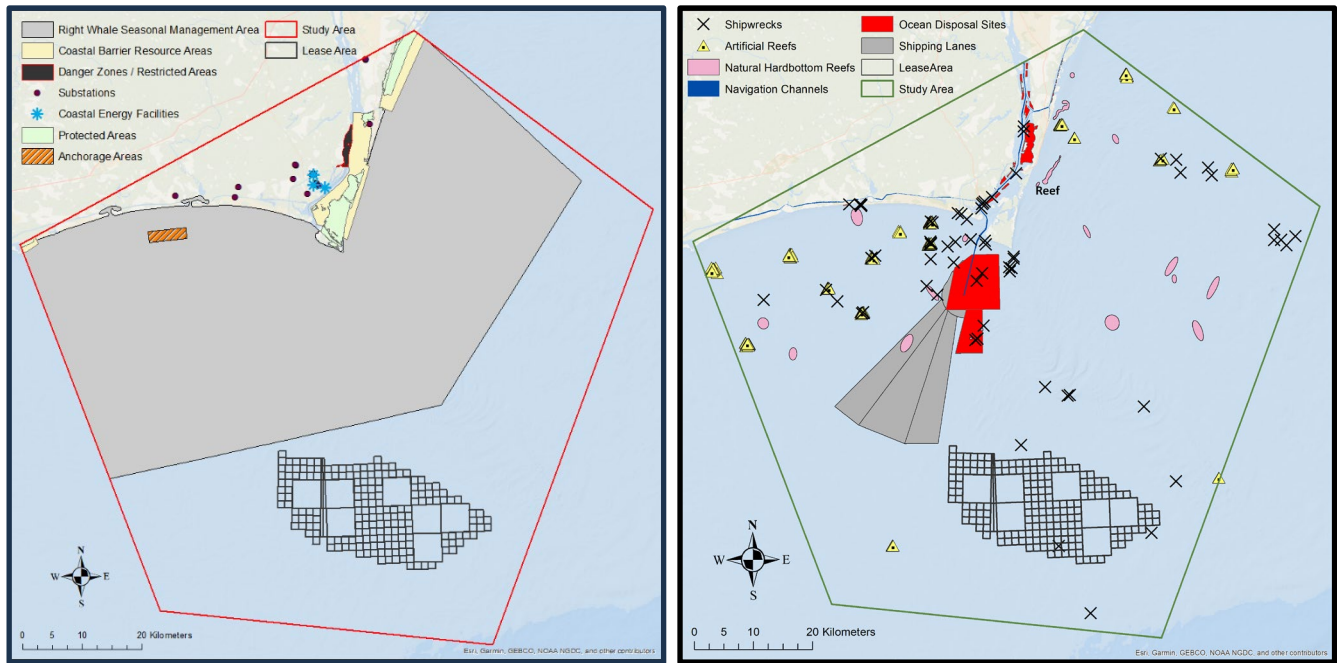
4.3 Regulated Areas and Obstructions

Landfall location is an important aspect of the design process for export cable routing. The transition between marine and terrestrial environments presents a unique engineering challenge. Additionally, much of the shoreline within the study area is subject to prohibitive regulations which must be planned around carefully (Figure 4). In addition to protected natural areas, there are large tracts of land that are subject to the Coastal Barrier Resources Act (CBRA), which prohibits development and a variety of other anthropogenic activities (Figure 4 – left). There are also restricted areas along the western shoreline of the lower Cape Fear River, classified as danger zones and strictly reserved for governmental and/or military uses (Figure 4 – left). In terms of mitigation, these restricted areas must be circumvented or avoided using *spatial exclusion zones* (i.e. establishing a no-go boundary) when planning the export cable route.

Other constraints to cable routing come in the form of physical obstructions on the seafloor (Figure 4 – right). These include shipwrecks (many of which date back to the Civil War era, e.g. Blockade Runners), natural 'essential fish habitat' hardbottom reefs, artificial reefs and ocean disposal sites. Areas dominated by rubble or coarse gravelly sediment, often located adjacent to the hardbottom reefs, may also present challenges to cable-laying operations.

280 Hardbottom reefs are especially prevalent in the region, but due to limited seafloor mapping and the sub-cropping nature of these features, mapped and confirmed reefs undoubtedly only form a small fraction of the total area present within the region (Cleary et al., 1996, 2001; Taylor et al, 2017). Not only do these areas represent important habitat for benthic and fish species,

285 but they also present a challenge to export cable burial. Recent Carolina Long Bay informational stakeholder workshops held by BOEM suggest that the hardbottom areas are of significant concern for many recreational and commercial fishermen, often targeted due to the presence of valuable fish stocks.



290 **Figure 4. Left: Right Whale Seasonal Management Area (SMA), terrestrial protected areas, restricted areas, anchorage areas, substations and coastal energy facilities (landfall focus). Right: Shipwrecks, hardbottom reefs, artificial reefs, disposal sites, shipping lanes and inland navigation routes.**

Inland navigation presents another challenge to cable routing. With the deep-water port of Wilmington located approximately 35 km up the Cape Fear River, many large vessels make their approaches to the port in the offshore area near the WEA (Figure 4 - right). There are also anchorage areas located near the Cape Fear River Inlet which present a direct risk to the proposed export cables, due to anchoring risks which may compromise structural integrity. An additional navigation and cable routing constraint is the broad footprint of the Traffic Separation Scheme (TSS). Vessels making their approaches to the port are required to remain within a designated shipping lane that covers a particularly large area and happens to be located between the wind farm location and several potential landfall sites. Although avoiding navigation areas is not a requirement for cable routing, running an export cable through any part of the TSS will lead to temporary area closures which may have socio-economic impacts on the local shipping industry. Proper cable burial will be critical within these areas to prevent any kind of cable exposure or free span, which has been known to occur at some OWF sites in Europe (English et al., 2017).

295
300

4.4 Environmental Heat Maps

This section provides a summary and brief discussion of the GIS-based Environmental Heat Maps, delineating high-risk versus low-risk areas for export cable routing, based on the sum of risk values for each ‘spatially defined or fixed’ environmental constraint considered in the assessment. A composite heat map of physical constraints, which includes reefs, shipwrecks, shipping & navigation areas, anchorage & disposal sites, coastal protected areas and military locations (Figure 5) shows specific areas of environmental constraint which represent a high composite risk score. There are several areas that contain scores of 3 to 4, which in many cases represent hardbottom reefs within the proposed export cable region and present substantial installation/burial and integrity risk for the cables. Areas with a score of 4 or higher often represent areas that contain overlapping hazard areas, especially coastal protected locations. In both cases, there is high potential for the identified hazards to hinder export cable routing and therefore these areas should be avoided.

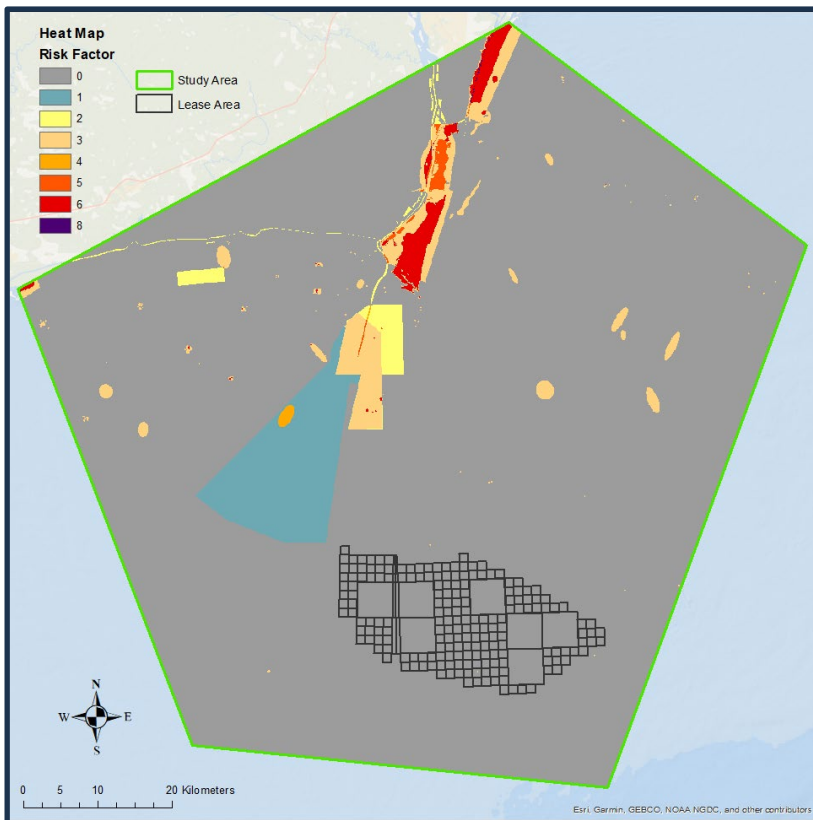


Figure 5: Composite raster heat map of selected ‘fixed’ constraints to export cable routing and installation. Highly migratory species (e.g. whales and sharks) and/or ‘mobile’ receptors and hazards (e.g. fishing vessels, hurricanes) are not included in the figure. EFH associated with Frying Pan Shoals has also not been included in the heat map since this has not been officially delineated or defined to date based on physical or biological characteristics.

320 The most restricted ‘high risk’ zone, based on the combined risk value of all the hazards in the area, extends from most of Bald
Head Island north towards Carolina Beach State Park. The protected areas within this region include State Natural Areas,
Coastal Reserve sites, Coastal Barrier Resource Areas (CBRA’s), a state park, and a military operations zone. These multiple
protected nature and military ‘no go’ areas may have significant implications for export cable planning and installation. By
325 1 million per kilometre of cable) and operating costs for the offshore wind energy developers. This is a common experience
as OWF developers navigate complex environments and engage with key state, federal and regulatory stakeholders (e.g.
military, fisheries, conservation agencies) early in the planning phase.

4.5. Cable Route Options

330 In addition to a standard heat map, a Euclidean distance analysis map generated in ArcGIS (Figure 6), represents distance to
potential hazards and environmentally sensitive locations. This modelling tool allows an overview of physical constraints
based on distance and helps establish possible exclusion areas around areas considered ‘no go’ or high risk, which include e.g.
shipwrecks, military facilities, reefs, and protected areas.

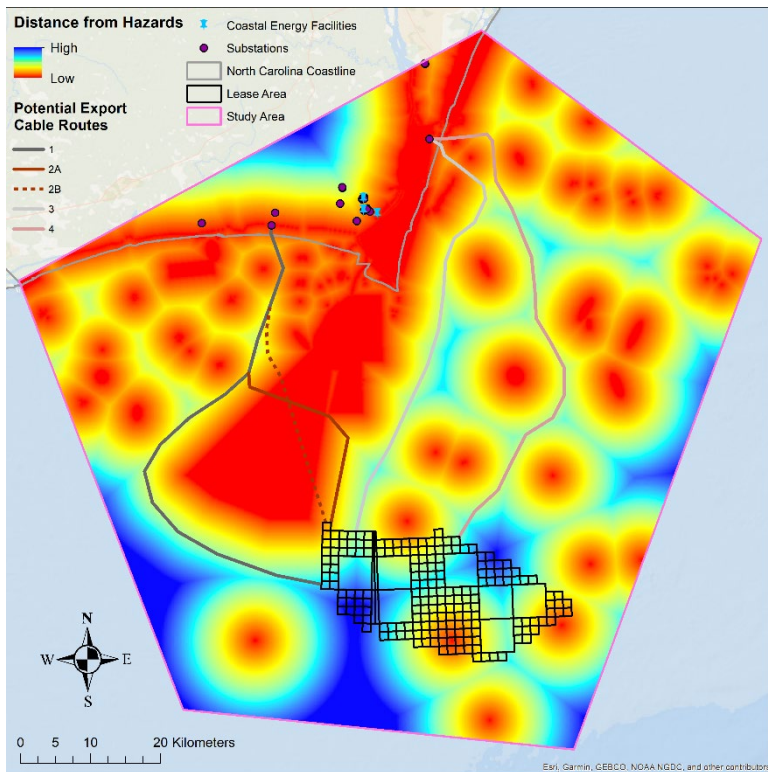
A review of the Euclidean distance to hazards map shows five possible cable route options (Figure 6 – options 1, 2A/B, 3 and
335 4), on either side of the Cape Fear River and Frying Pan Shoals. These routes were developed based on the favourable areas
displayed by the hazard proximity modelling data. The results shows that cable route Option 2B is the shortest distance to
landfall from the WEA. However, it also interferes and crosses diagonally across much of the shipping channel and therefore
should be avoided if possible. According to German marine spatial planning studies, the best option when crossing a shipping
channel is to run perpendicular to it (i.e. the shortest distance) in order to avoid temporary closures during installation, or cable
340 damage due to vessel strandings and possible anchor drops (BSH 2009, 2017). However, these scenarios are unlikely to occur,
especially if proper cable burial depths are achieved.

A longer cable route crossing diagonally across the shipping channel is presented as alternative Option 2A, which follows
European export cable and shipping channel guidelines. Cable route Option 1 avoids the shipping channel entirely, reducing
constraints and risks, but is 40% longer compared to Option 2B. Though there is a substantial trade-off for each of these
345 scenarios, providing several options allows the developer to weigh the benefits and drawbacks of each scenario.

Another alternative may be installing the export cables up along the eastern side of Frying Pan Shoals and Bald Head Island,
parallel to the shoreline of the southern beaches of New Hanover County (cable route Option 3). With an electrical substation
located in the northern half of developed Carolina Beach, the export cable could make landfall near this site while avoiding
protected coastal areas. Another possibility is Option 4, a longer route which starts at the eastern half of the WEA and extends
350 further offshore, allowing for complete or partial avoidance of Frying Pan Shoals and EFH. The landfall location would be the
same as Option 3. According to NOAA, EFH and Frying Pan Shoals are not currently spatially defined and therefore are not
included as a ‘physical’ constraint in this modelling study, although the authors acknowledge that it is an important
consideration. The EFH within the study area is primarily based on highly migratory Atlantic fish, especially sharks (NOAA,

2021). Should EFH be spatially defined around Frying Pan Shoals in the future, then this would need to be included in any similar GIS-based modelling studies.

Thick sand bodies are ideal for cable burial, which would be advantageous for the proposed export cable routes presented herein; however large mobile bedforms may result in cable free-span or exposure with possible impacts on cable integrity and energy transmission (e.g. English et al., 2017). There are also scientific studies being conducted by BOEM to assess the viability of using Frying Pan Shoals as a long-term source of beach nourishment sand for local coastal communities (Pickens, 2021). This scenario needs to be assessed carefully in order to avoid any cumulative impacts (i.e. dredging for sand and cable burial) and possible conflict in terms of sand resource management.



365 **Figure 6: GIS-based Euclidean distance results showing areas of minimal risk (dark blue to light blue), high risk areas (yellow and red) and five possible export cable route options (1, 2A/B, 3 and 4).**

Two potential substations present themselves as the most likely export cable landfall destinations, which is an important consideration when planning cable routes, allowing a direct connection to the electrical grid. Each substation is located on either side of the Cape Fear River mouth and is the closest in proximity to naturally presented corridors from the WEA, while also maximizing the distance from hazards along the entire route. Substations were also selected on either side of the Cape Fear River due to the dual leases awarded to energy developers.

With two companies awarded part of the lease area, planning two separate projects complicates the operation, particularly with export cable routing. The developers retain the option to run each of their export cables parallel to one another along the same corridor, eventually making landfall at the same electrical substation. Alternatively, the export cable routes could start from
375 opposite ends of the WEA and take entirely different paths to different landfall locations several miles from one another. This second possibility seems more likely based on our examination of the layout of the region as part of the case study.

5. Discussion

The results of this GIS-based modelling and desktop study provide important preliminary insights into the environmental
380 characteristics of the project area and implications for export cable routing. From a high-level, early cable planning perspective, the results are promising. The study provides an overview of key MSP constraints, including important coastal and marine areas that should be avoided due to high-risk.

Early phase MSP, to minimize conflict with other sea- and seabed-users, has been an important tool used by wind developers and government since the early days of offshore wind development, particularly in the UK and western Europe (Douve and
385 Ehler, 2010; Berkenhager et al., 2010; Jay, 2010; Gimpel et al., 2015) but also in the United States, e.g. offshore New York (Haaren & Fthenakis, 2011). Many of these studies used GIS and modelling techniques to map potential conflict areas, particularly for fisheries, dredging areas, cables and pipelines, shipping & navigation areas, marine protected areas (MPAs) and military locations. Other studies, where wind farms are being planned, continue to use MSP techniques and sea-user modelling methods to identify optimum locations for offshore wind areas, including off Taiwan (Zhang et al., 2017), off Spain
390 (Rodríguez-Rodríguez et al, 2016; Abramic et al., 2021) and in the Baltic Sea (Göke & Mohn, 2018).

Although there are numerous published papers examining the effects and ecological impacts of OWFs, there are far fewer studies which focus specifically on subsea power cables (Taormina et al., 2018). Case studies, such as this one, which combine potential export cables routes, EIA principles, MSP and GIS modelling studies for planning purposes are not readily found in the published literature. Undoubtedly there are private engineering and environmental consultancy companies that use similar
395 techniques, but these studies are not readily available most likely due to commercial sensitivities.

In most cases, including in this study, the potential cable route corridor areas (anywhere between the WEA and the coast) often exceed the proposed wind energy area. The competing marine user interests within this larger space between the WEA and the coast are more numerous, complex and varied (e.g. nearshore dredging and disposal sites, navigation channels, inlets and shoals, coastal MPA's, reefs and shipwrecks, coastal homeowners, important commercial and recreational fishing areas,
400 tourism, beach erosion). In essence, this GIS-based modelling desktop study provides a relatively easy, fast and inexpensive method of identifying potential offshore wind cable corridors, which can be adopted not only by other wind developers, but also by similar marine industries like subsea telecoms and pipelines.

It should be noted that a detailed study of each sensitive receptor that may be impacted by cable installation or operation across southeast North Carolina is beyond the scope of this study. Instead, the study should be viewed as an important 'high-level'
405 initial phase to identify larger ecological and physical constraints to cable routing. Following is a brief discussion of three

priority environmental considerations when planning the cable route for the Carolina Long Bay wind farm. These include: i) cable burial, ii) hardbottom reefs/essential fish habitat and iii) coastal landfall locations. The complex geology of southeast North Carolina's shoreface/inner shelf and the variety of sensitive coastal characteristics makes these local environmental constraints especially important when planning the cable route.

410 **5.1 Export Cable Corridor/ Burial**

The original Carolina Long Bay Environmental Assessment (EA) by BOEM in 2015 suggested that there be at least two to three 300 m wide export cable corridors per lease area, comprising approximately 155 km of surveyed cable route. To date, no specific export cable route corridor or land-based substation connection has been established, although the leaseholder will be required to identify a corridor as part of their Construction and Operations Plan (COP).

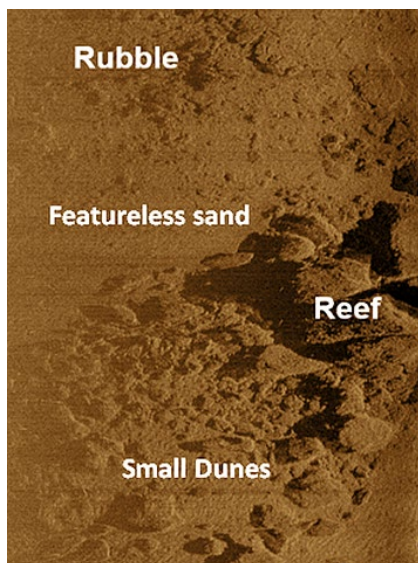
415 When it comes to detailed seabed and subsurface studies to inform export power cable routing and installation, high-resolution geophysical (e.g. multibeam bathymetry, side scan sonar and seismic profiling) and geotechnical surveys are critical to inform final cabling design plans. They are, however, extremely expensive and time-consuming. This case study has been able to procure useful information at a significantly lower cost. Importantly, the results of this study can be used to optimize survey areas for subsequent geophysical and geotechnical (G&G) data collection, especially areas of the seabed that allow for proper
420 cable burial (i.e., at least 1-2 m of unconsolidated surface sediment). Potential export cable corridors that mitigate environmental impacts and avoid hazards and restricted areas can become the focus of subsequent G&G surveys. The data collected as part of this study will allow fine-tuning of potential survey corridors areas, thereby reducing costs and time.

5.2 Essential Fish Habitat/Hardbottom

The hardbottom reefs and associated nearby features are protected under the Magnuson Stevenson Fisheries Act and are
425 designated as Essential Fish Habitat (EFH) by the National Marine Fisheries Service (NMFS). The widespread presence of hardbottom reefs on the shoreface and inner shelf has been well documented along the sand limited southeast coast of North Carolina (Riggs et al., 1995, 1998; Cleary et al., 1996; Backstrom, 2002). Although the prevalence of hardbottom reefs is well known, the distribution, 3-dimensional architecture abundance and ephemeral nature of the reefs is still not well established (Riggs et al. 1995, 1998; Cleary et al., 1996; Taylor et al., 2017). Figure 7 shows a sidescan sonar image of a hardbottom reef
430 located off southeast NC, illustrating the complexity of these environments, which can range from high-relief carbonate/limestone outcrops to rubble fields to featureless fine sand. Some estimates suggest that only 10% of the outer continental shelf of southeast NC has been mapped using standard geophysical and geotechnical survey methods, resulting in a lack of knowledge regarding the presence of these ecologically important areas (Taylor et al., 2017). The reefs comprise areas of high biodiversity, and they are known to attract and provide critical habitat to numerous fish and benthic species
435 (Quattrini et al. 2004, Kendall et al., 2009; Freshwater et al, 2016). They are also important locations for commercial and recreational fishing and diving activities.

Stakeholder concerns include identifying all hardbottom habitat within 300 m of the windfarm and associated infrastructure, including cables, in addition to mapping smaller hardbottom units. As part of the leasing process, BOEM requires benthic habitat surveys to inform site characterization, in order to assess potential environmental impacts (BOEM 2015b; Final SEA,

440 2022b). As with cable burial, high resolution G&G surveys will be critical in identifying and mapping reef areas, where cable burial is not possible.



445 **Figure 7: Sidescan sonar (acoustic) image of hardbottom reef and surroundings from southeast NC. Note mix of seabed types, including high-relief reef, rubble, small dunes/bedforms and featureless sand. Cable burial through a location like this would not be feasible due to rock presence and limited sediment thickness. The reef is located approximately 1 km offshore, south of Carolina Beach, and is referred to as Reef in Figure 4, right. Image by J.T. Backstrom.**

5.3 Export Cable Landfall

The coastal zone where the export cables potentially make landfall includes east-facing New Hanover and south-facing
450 Brunswick County beaches, separated by the Cape Fear River mouth. As a result, there are multiple environmental constraints within this area, which include e.g., important bird areas, coastally significant geological areas, EFH, shipwrecks, wetlands, critical fisheries habitat and coastal barrier resource (protected) areas. Navigating these multiple inland, coastal and marine areas, coupled with identifying a likely electrical substation, presents a challenge to optimal landfall locations. A preliminary assessment from this study identified two potential landfall locations. The first location routes the export cables towards the
455 Brunswick Nuclear Power Plant by utilizing the coolant canal that drains just offshore of Caswell Beach (Figure 8). This landfall location avoids wetland habitats and coastal barrier resources, such as Bald Head Island Nature Conservancy and Fort Fisher State Park. The environmental impact on wetlands would be negligible to minor since the area has already been developed. Insulation methods such as a sediment cap or concrete layering would prevent cable damage due to abrasion. Additionally, tethering the cable would prevent damage. The cables' heat resistance would allow it to be submerged within the
460 canal or buried alongside the canal route.

The second optimum landfall is located within developed central Carolina Beach, where there is an existing sub-station on shore. Areas further south are mostly protected coastal barrier or geologically/archaeologically important areas (Bald Head Island, Zeke's Island, Fort Fisher). The developed nature of Carolina Beach would limit potential impacts to sensitive habitats like wetlands and seagrasses, which are common in the surrounding areas. There will undoubtedly be temporary socio-economic impacts in terms of beach closures and access during the short landfall construction/burial phase, but these impacts can be easily minimized by temporal mitigation techniques (e.g. avoiding construction during the busy tourist season).



Figure 8. Possible location for export cable landfall adjacent to the coolant canal for Brunswick Nuclear Power Plant. Environmental constraints would be minimal here due to the already developed/engineered nature of the location. Source: NOAA.

Additional studies that conduct biological monitoring of potentially impacted areas will assist with the planning process. Enhanced understanding of the species present and their response to export cable installation will allow for fine-tuning of the environmental review process. Long-term monitoring is a necessary component of such studies since the export cable has the potential to permanently alter the seabed, especially if it is not removed after the decommissioning phase. For impacted ecological communities, examining their response to newly established environmental conditions associated with the cable will provide valuable insight into the long-term effects on marine ecosystems. These types of studies will improve environmental mitigation practices that can be implemented at other planned offshore wind projects and comparable subsea projects, like pipelines and telecommunications.

480

6. Conclusions

This GIS-based environmental modelling mapping study has been effective in identifying environmental project constraints with easily available desktop and literature review resources. The study has identified five possible cable route corridors, with a variety of options for the OWF developers. These range from the shortest route to land from the WEA (which crosses a

485 shipping channel) to a much longer option that avoids most environmental constraints and hazards to cable integrity. In addition, two optimal cable landfall locations, which minimize impacts to sensitive coastal receptors have also been presented. Similar desktop studies using GIS are common for offshore wind projects, although to date studies focused exclusively on export cables and optimal routing using standard EIA methods are not readily apparent in published literature. Undoubtedly similar approaches have been used by private engineering and environmental companies, where commercial sensitivities likely
490 ensure the resulting studies are not publicly available.

The lack of site specific high-resolution environmental survey data may be the greatest challenge to early export cable routing and site-selection. When it comes to subsea power cables, the main way of mitigating a number of potential impacts (EMF, thermal, entanglement, structural integrity) is through proper cable burial into the seabed, which is ideally at 2 m depths for OWFs (English et al., 2008; Worzyk, 2009; OSPAR, 2012; Taormina et al., 2017; BOEM, 2023a). Once spatially defined
495 high-risk areas have been delineated and avoided (e.g., via well-defined exclusion zones), a solid understanding of seabed surface and substrate characteristics is essential. Extensive high-resolution geophysical, geotechnical and sedimentological surveys, especially sidescan sonar, shallow seismic profiling, cone penetrometer testing and coring data, which identify seabed and sub-seabed characteristics on a much smaller scale, is required for optimal cable installation and route selection. These marine survey techniques also inform benthic characteristics and are also able to identify anthropogenic features such as
500 shipwrecks and cables/pipelines.

The factors that are considered for environmental impact assessments pertaining to offshore wind export cables are both numerous and diverse. A wide variety of sensitive receptors exist in the offshore area between the Carolina Long Bay wind areas and the nearest shorelines that contain possible landfall sites for the export cable. While the impact to many of these receptors and export cable hazards can be minimized or avoided using spatial mitigation techniques, other receptors will require
505 temporal mitigation to limit possible impacts. Impacts to the physical environment can generally be accounted for and mitigated spatially, while in most cases biological resources tend to have a less defined location due to the migratory nature of many species found in the coastal and ocean environment.

Though the case study reveals clear “no go zones,” there are limitations in terms of the hazards and potential impacts that cannot be revealed without additional field surveys. Arguably, there may yet be additional impacts associated with the selected
510 cable routes that allow future surveys to focus only on the viable areas, those without known hazards or restrictions. The methods presented in this case study can be used at other OWF projects as a productive step in early phase marine spatial planning for export cabling. The marine environment off the coast of North Carolina presents an excellent opportunity for offshore wind development; however, the sustainable use of this resource has been made a clear priority by the state and federal government. Mitigation strategies for export cables, as shown in this study, can be implemented to ensure that one of the most
515 important components of an offshore wind operation has a minimal impact on coastal and marine resources.

Competing Interests

520 The manuscript authors have no conflicts or competing interests to declare. All authors have contributed to, and agree, with the contents of the manuscript. We certify that the submission is all original work and is not under consideration for publication at any other journal.

Acknowledgments

525 The authors are especially grateful to the numerous publicly available and downloadable data sources, including Marine Reports, Coastal Ocean Research Monitoring Program (CORMP – UNC Wilmington), the US Army Corps of Engineers (USACE) and the National Oceanic and Atmospheric Administration (NOAA). This study was partially funded by the Department of Environmental Sciences, UNC-Wilmington. We would especially like to acknowledge the three referees who completed a thorough review of an earlier version of the manuscript, significantly improving this version.

530

Author Contributions

JT Backstrom: original study concept, literature review, data mining, writing, analysis, figure production, review, submission.

NM Warden: literature review, GIS analysis, modelling, data mining, writing, figure production, review.

CM Walsh: literature review, GIS analysis, data mining, writing, figure compatibility, review.

535

References

Abramic, A. García Mendoza, G. and Haroun, R., 2021. Introducing offshore wind energy in the sea space: Canary Islands case study developed under Maritime Spatial Planning principles. *Renewable and Sustainable Energy Reviews*, 145, 111119. <https://doi.org/10.1016/j.rser.2021.111119>.

540

Albert, L., Deschamps, F., Jolivet, A., Olivier, F., Chauvaud, L., & Chauvaud, S., 2020. A current synthesis on the effects of electric and magnetic fields emitted by submarine power cables on invertebrates. *Marine Environmental Research*, 159. <https://doi.org/10.1016/j.marenvres.2020.104958>

545

Backstrom, J.T., 2002. Storm-driven sedimentary changes on the shoreface of a nourished beach, Kure Beach, North Carolina. Master's Thesis, University of North Carolina Wilmington. 49p.

550

Bergstrom, L., Kautsky, L., Malm, T., Rosenberg R., Wahlberg M., Åstrand, N., Capetillo, A. and Dan Wilhelmsson, D., 2014. Effects of Offshore Wind Farms on Marine Wildlife – A Generalized Impact Assessment. *Environmental Research Letters*, 9, 3, 1-12.

555

BOEM, 2015. Bureau of Ocean Energy Management Commercial Wind Lease Issuance and Site Assessment Activities on the Atlantic Outer Continental Shelf Offshore North Carolina: Revised Environmental Assessment. US Department of the Interior.

- 560 BOEM, 2022a. Bureau of Ocean Energy Management. Revolution Wind Farm and Revolution Export Cable - Development and Operation Biological Assessment November 16, 2022 For the U.S. Fish and Wildlife Service. 83p.
- BOEM, 2022b. Bureau of Ocean Energy Management. Commercial Wind Lease Issuance and Site Assessment Activities on the Atlantic Outer Continental Shelf Offshore North Carolina: Final Supplemental Environmental Assessment. US Department of the Interior. 105 p.
- 565 BOEM, 2023a. Bureau of Ocean Energy Management, National Environmental Policy Act and Offshore Renewable Energy <https://www.boem.gov/renewable-energy/national-environmental-policy-act-and-offshore-renewable-energy>
- BOEM, 2023b. Bureau of Ocean Energy Management. Final Coastal Virginia Offshore Wind Commercial Project Essential Fish Habitat Assessment For the National Marine Fisheries Service May 2023. U.S. Department of the Interior Bureau of Ocean Energy Management Office of Renewable Energy Programs. 154p.
- 570
- BSH, 2009. Maritime spatial plan for the North Sea. German version available at: https://www.bsh.de/DE/THEMEN/Offshore/Meeresraumplanung/Nationale_Raumplanung/_Anlagen/Downloads/Raumordnungsplan_Textteil_Nordsee.pdf?__blob=publicationFile&v=1
- 575
- BSH, 2017. Bundesfachplan für die deutsche ausschließliche Wirtschaftszone der Nordsee 2016/2017. Published 22 December 2017. https://www.bsh.de/DE/PUBLIKATIONEN/_Anlagen/Downloads/Offshore/BundesfachplanNordsee/Bundesfachplan-Offshore-Nordsee-2016-2017
- 580
- Carter, L., Gavey, R., Talling, P., & Liu, J., 2014. Insights into submarine geohazards from breaks in subsea telecommunications cables. *Oceanography*, 27(2): 58-67. <http://dx.doi.org/10.5670/oceanog.2014.40>
- Choi, H.J., Cho, S.J., Hwang, T., Nam, J., and Hwang, C.S., 2021. Cumulative Impact Assessment for Marine Spatial Planning: A Case Study of the Gyeonggi Bay in South Korea. *Journal of Coastal Research*, 114: 360-364. <https://doi.org/10.2112/JCR-SI114-073.1>
- 585
- Cleary, W.J., Riggs, S.R., Marcy, D.C and Snyder, S.W., 1996. The influence of inherited geological framework upon a hardbottom-dominated shoreface on a high-energy shelf: Onslow Bay, North Carolina, USA. *Geological Society London Special Publications* 117(1):249-266
- 590
- Cleary, W. J., McLeod, M.A., Rauscher, M.A., Johnston, M.K., and Riggs, S.R., 2001. Beach Nourishment on Hurricane Impacted Barriers in Southeastern North Carolina, USA: Targeting Shoreface and Tidal Inlet Sand Resources. *Journal of Coastal Research*, SI 34, pp. 232-255.
- 595
- Copping, A., Hemery, L., Overhus, D., Garavelli, L., Freeman, M., Whiting, J., Gorton, A., Farr, H., Rose, D., & Tugade, L., 2020. Potential Environmental Effects of Marine Renewable Energy Development - The State of Science. *Journal of Marine Science and Engineering*, 8: 879. doi:10.3390/jmse8110879
- 600
- Douvere F. and Ehler, C.N., 2009. New perspectives on sea use management: Initial findings from European experience with marine spatial planning. *Journal of Environmental Management* 90 (2009) 77–88
- Energy, 2021. <https://www.energy.gov/articles/energy-secretary-granholm-announces-ambitious-new-30gw-offshore-wind-deployment-target>
- 605
- English, P.A., Mason, T.I., Backstrom, J.T., Tibbles, B.J., Mackay, A.A., Smith, M.J. and Mitchell, T. 2017. Improving Efficiencies of National Environmental Policy Act Documentation for Offshore Wind Facilities Case Studies Report. US Dept.

- of the Interior, Bureau of Ocean Energy Management, Office of Renewable Energy Programs, Sterling. OCS Study BOEM 2017-026. 217pp.
- 610 Freshwater, D.W., Whitfield, P.E. and Buckel, C.A, 2016. Epibenthic community assessments indicate high spatial and temporal variability among continental shelf hard bottom sites in a marine transition zone. *Regional Studies in Marine Science*, 5, 41-50.
- 615 Fox, A.D., Desholm, M., Kahlert, J., Christensen, T.K., & Petersen, I.K. 2006. Information needs to support environmental impact assessment of the effects of European marine offshore wind farms on birds. *Ibis*, 148: 129-144. <http://dx.doi.org/10.1111/j.1474-919X.2006.00510.x>
- 620 Gill, A.B., 2005. Offshore renewable energy: ecological implications of generating electricity in the coastal zone. *Journal of Applied Ecology* 42, 4, 605-615.
- Gimpel, A., Stelzenmüller, V., Grote, B., Bela H., Buck,H., Floeter, J., Núñez-Riboni, I., Pogoda, B. and Temming, A., 2015. A GIS modelling framework to evaluate marine spatial planning scenarios: Co-location of offshore wind farms and aquaculture in the German EEZ. *Marine Policy*, 55, 102-115.
- 625 Göke C. Dahl K. and Mohn, C., 2018. Maritime Spatial Planning supported by systematic site selection: Applying Marxan for offshore wind power in the western Baltic Sea. *PLoS ONE* 13(3): e0194362. <https://doi.org/10.1371/journal.pone.0194362>
- 630 Gusatu, L.F., Menegon, S., Depellegrin, D., Zuidema, C., Faaij, A., & Yamu, C., 2021. Spatial and temporal analysis of cumulative environmental effects of offshore wind farms in the North Sea basin. *Scientific Reports*, 11. <https://doi.org/10.1038/s41598-021-89537-1>
- Hammar, L., Wikström, A. and Molander, S., 2014. Assessing ecological risks of offshore wind power on Kattegat cod. *Renewable Energy*, 66, 414-424.
- 635 Hammar, L., Molander, S., Palsson, J., Crona, J., Carneiro, G., Johansson, T., Hume, D., Kagesten, G., Mattsson, D., Tornqvist, O., Zillen, L., Mattson, M., Bergstrom, U., Perry, D., Caldow, C., & Andersen, J., 2020. Cumulative impact assessment for ecosystem-based marine spatial planning. *Science of the Total Environment*, 734. <https://doi.org/10.1016/j.scitotenv.2020.139024>
- 640 van Haaren, R. and Vasilis Fthenakis, V., 2011. GIS-based wind farm site selection using spatial multi-criteria analysis (SMCA): Evaluating the case for New York State. *Renewable and Sustainable Energy Reviews*, 15, 7, 3332-3340.
- Jay, S., 2010. Planners to the rescue: Spatial planning facilitating the development of offshore wind energy. *Marine Pollution Bulletin* 60, 493–499.
- 645 Hutchinson, Z.L, Secor, D.H. and Gill, A.B., 2020. The Interaction Between Resource Species and Electromagnetic Fields Associated with Electricity Production by Offshore Wind Farms. *Oceanography*, SI 33, 4, 96-107. <https://www.jstor.org/stable/26965753>
- 650 Kendall, M.S., L.J. Bauer, and C.F.G. Jeffrey., 2009. Influence of Hard Bottom Morphology on Fish Assemblages of the Continental Shelf Off Georgia, Southeastern USA. *Bulletin of Marine Science* 84: 265-286.
- 655 Lonsdale, J., Nicholson, R., Judd, A., Elliott, M., & Clarke, C.,2020. A novel approach for cumulative impacts assessment for marine spatial planning. *Environmental Science and Policy*, 106: 125-135. <https://doi.org/10.1016/j.envsci.2020.01.011>

- MMO, 2014. Marine Management Organization, UK. Review of environmental data associated with post-consent monitoring of offshore wind farms. 208 p.
- 660 Methratta, E.T., 2021. Distance-Based Sampling Methods for Assessing the Ecological Effects of Offshore Wind Farms: Synthesis and Applications to Fisheries Resource Studies. *Frontiers in Marine Science*, 8. <https://doi.org/10.3389/fmars.2021.674594>
- 665 Mooney, T., Andersson, M., and Stanley, J., 2020. Acoustic impacts of offshore wind energy on fishery resources. *Oceanography*, 33(4): 82-95. <https://www.jstor.org/stable/10.2307/26965752>
- Nedwell, J.R., Brooker, A.G. and Barham, R.J., 2012. Assessment of underwater noise during the installation of export power cables at the Beatrice Offshore Wind Farm (E318R0106). Subacoustech Environmental.
- 670 NCDEQ, 2023. <https://www.deq.nc.gov/energy-climate/offshore-wind-development>
- NOAA, 2021. https://www.habitat.noaa.gov/apps/efhmapper/?page=page_7 Last accessed February 2024.
- North Carolina Transmission Planning Collaborative, 2021. Report on the NCTPC 2020 Offshore Wind Study. NCTPC.
- 675 NREL, 2023. National Renewable Energy Laboratory, <https://windexchange.energy.gov/maps-data/196>
- OSPAR, 2008. OSPAR Commission. Background document on potential problems associated with power cables other than those for oil and gas activities.
- 680 OSPAR 2012. Guidelines on Best Environmental Practice (BEP) in Cable Laying and Operation. OSPAR Commission. 18 p.
- Pickens BA (Kearns & West and CSS-Inc). 2021. Assessment of Frying Pan Shoals as a potential sand source in the Cape Fear Region of North Carolina. Sterling (VA): US Department of the Interior, Bureau of Ocean Energy Management. OCS Study BOEM 2021-028. 81 p.
- 685 Quattrini, A. M., S. W. Ross, K. J. Sulak, A. M. Necaie, T. L. Casazza, and G. D. Dennis., 2004. Marine fishes new to continental United States waters, North Carolina, and the Gulf of Mexico. *Southeastern Naturalist* 3(1):155-172.
- 690 Rodríguez-Rodríguez, D., Abdul Malak, D., Soukissian, T., Sánchez-Espinosa, A., 2016. Achieving Blue Growth through maritime spatial planning: Offshore wind energy optimization and biodiversity conservation in Spain. *Marine Policy*, 73, 8-14. <https://doi.org/10.1016/j.marpol.2016.07.022>
- 695 Shiflett, S.A. and Backstrom, J.T., 2023. Impacts of Hurricane Isaias (2020) on geomorphology and vegetation communities of natural and planted dunes in North Carolina. *Journal of Coastal Research*, 39(4), 587–609.
- Perry, R.L. & Heyman, W.D., 2020. Considerations for offshore wind energy development effects on fish and fisheries in the United States. *Oceanography*, 33(4): 28-37. <https://www.jstor.org/stable/10.2307/26965747>
- 700 Smythe, T., Bidwell, D., & Tyler, G., 2021. Optimistic with reservations: The impacts of the United States' first offshore wind farm on the recreational fishing experience. *Marine Policy*, 127. <https://doi.org/10.1016/j.marpol.2021.104440>
- Snyder, D. B., Bailey, W.H., Palmquist, K., Cotts, B.R.T and Olsen K.R., 2019. Evaluation of Potential EMF Effects on Fish Species of Commercial or Recreational Fishing Importance in Southern New England. OCS Study BOEM 2019-049.
- 705

Riggs, S.R., Cleary, W.J and Snyder S.W.,1995. Influence of inherited geologic framework on barrier shoreface morphology and dynamics. *Marine Geology*, 126, 213-234.

710 Riggs, S., W. Ambrose, and J. Cook. 1998. Sediment production on sediment-starved continental margins: the interrelationship between hardbottoms, sedimentological and benthic community processes, and storm dynamics. *Journal of Sedimentary Research* 68:155–168.

715 Stenhouse, I., Berlin, A., Gilbert, A., Goodale, M., Gray, C., Montevecchi, W., Savoy, L., & Spiegel, C., 2020. Assessing the exposure of three diving bird species to offshore wind areas on the U.S. Atlantic Outer Continental Shelf using satellite telemetry. *Diversity and Distributions*, 26: 1703-1714. <https://doi.org/10.1111/ddi.13168>

720 Taormina, B., Bald, J., Want, A., Thouzeau, G., Lejart, M., Desroy, N., & Carlier, A., 2018. A review of potential impacts of submarine power cables on the marine environment: Knowledge gaps, recommendations and future directions. *Renewable and Sustainable Energy Reviews*, 96, 380-391. <http://dx.doi.org/10.1016/j.rser.2018.07.026>

Taylor, J. C., Paxton, A.B., Voss, C.M., Sumners, B., Buckel, C.A., Vander Pluym, J., Ebert, E.B., Viehman, T.S., Fegley, S.R., Pickering, E.A., Adler, A.M., Freeman, C., & Peterson, C.H., 2016. Benthic Habitat Mapping and Assessment in the Wilmington-East Wind Energy Call Area. OCS Study BOEM 2016-003 and NOAA Technical Memorandum 196.

725 Topham, E., McMillan, D., Bradley, S., & Hart, E., 2019. Recycling offshore wind farms at decommissioning stage. *Energy Policy*, 129, 698-709. <http://dx.doi.org/10.1016/j.enpol.2019.01.072>

730 Voss, C.M., C.H. Peterson, and S.R. Fegley, 2013. Fishing, Diving, and Ecotourism Stakeholder Uses and Habitat Information for North Carolina Wind Energy Call Areas. U.S. Department of the Interior, Bureau of Ocean Energy Management, Office of Renewable Energy Programs, Herndon, VA. OCS Study BOEM 2013-210. 23pp.

Worzyk, T, 2009. Submarine Power Cables: Design, Installation, Repair, Environmental Aspects. Power Systems. Springer Berlin, Heidelberg, 296 p.

735 Zhang, Y., Zhang, C., Chang, Y.C., Liu, W.H., and Zhang, Y., 2017. Offshore wind farm in marine spatial planning and the stakeholders engagement: Opportunities and challenges for Taiwan. *Ocean & Coastal Management*. 149, 69-80.

Supplementary Table

740 Links to Data Sources

Data Layer	Source
Study Area	Arbitrarily determined by authors
Wind Energy Area Polygon	https://www.boem.gov/renewable-energy/state-activities/carolina-long-bay
Bathymetry (Ocean Reports)	https://marinecadastre.gov/oceanreports/#/@-10737743.881037742.4753280.983019757/4
Bathymetry Contours (Ocean	https://marinecadastre.gov/oceanreports/#/@-

Reports)	10737743.881037742,4753280.983019757/4
Bathymetry (GEBCO)	https://download.gebco.net/
East Coast Sediment Texture Database / ECSTD2014 Sample Points (USGS)	https://woodshole.er.usgs.gov/openfile/of2005-1001/htmldocs/datacatalog.htm
Continental Margin Mapping Program / CONMAP Sediment Size Distribution Polygons (USGS)	https://woodshole.er.usgs.gov/openfile/of2005-1001/htmldocs/datacatalog.htm
F00679 Backscatter Data (NOAA)	https://www.ngdc.noaa.gov/nos/F00001-F02000/F00679.html
H11413 Sidescan Data (NOAA)	https://www.ngdc.noaa.gov/nos/H10001-H12000/H11413.html
H12930 Backscatter Data (NOAA)	https://www.ngdc.noaa.gov/nos/H12001-H14000/H12930.html
Essential Fish Habitat (NOAA)	https://www.habitat.noaa.gov/protection/efh/newInv/index.html
Habitat Areas of Particular Concern (NOAA)	https://www.habitat.noaa.gov/protection/efh/newInv/index.html
Cetacean Biologically Important Areas (Ocean Reports)	https://marinecadastre.gov/oceanreports/#/@-10737743.881037742,4753280.983019757/4
Audubon Important Bird Areas (Audubon Society via Ocean Reports)	https://marinecadastre.gov/oceanreports/#/@-10737743.881037742,4753280.983019757/4
Coastal Barrier Resource Areas	https://marinecadastre.gov/oceanreports/#/@-10737743.881037742,4753280.983019757/4

Protected Areas	https://marinecadastre.gov/oceanreports/#/@-10737743.881037742,4753280.983019757/4
Danger Zones	https://marinecadastre.gov/oceanreports/#/@-10737743.881037742,4753280.983019757/4
Shipwrecks	https://marinecadastre.gov/oceanreports/#/@-10737743.881037742,4753280.983019757/4
Artificial Reefs	https://marinecadastre.gov/oceanreports/#/@-10737743.881037742,4753280.983019757/4
Navigation Channels	https://marinecadastre.gov/oceanreports/#/@-10737743.881037742,4753280.983019757/4
Shipping Lanes	https://marinecadastre.gov/oceanreports/#/@-10737743.881037742,4753280.983019757/4
Hardbottom/Essential Fish Habitat Areas	Digitized from Captain Seagull's Fishing Chart