

Direct integration of non-axisymmetric Gaussian wind-turbine wake including yaw and wind-veer effects

Karim Ali¹, Pablo Ouro¹, and Tim Stallard¹

¹School of Engineering, University of Manchester, Manchester, M13 9PL, UK

Correspondence: Pablo Ouro (pablo.ouro@manchester.ac.uk)

Abstract. The performance of a wind farm is significantly influenced by turbine-wake interactions. These interactions are typically quantified for each turbine either by measuring its nacelle wind speed or by evaluating its rotor-averaged wind speed using numerical methods that involve a set of discrete points across the rotor disk. Although various point distributions exist in the literature, we introduce two analytical expressions for integrating non-axisymmetric Gaussian wakes, which account for wake stretching and shearing resulting from upstream turbine yaw and wind veer. The analytical solutions correspond to modelling the target turbine as a circular actuator disk and as an equivalent rectangular actuator disk. The derived expressions are versatile, accommodating any offset and hub-height difference between the wake source (upstream turbine) and the target turbine. Verification against numerical evaluations of the rotor-averaged deficit using 2000 averaging points at various downstream locations from the wake source demonstrates excellent agreement for both analytical solutions at small/moderate veer effects, whereas only the rectangular-disk solution was accurate at extreme veer conditions. In terms of computational cost compared to vectorised numerical averaging using 16 averaging points, both analytical solutions are computationally efficient with the circular-disk solution being approximately 15% slower and the rectangular-disk solution being approximately 10% faster. Furthermore, the analytical expressions are shown to be compatible with multiple wake superposition models and are differentiable, providing a foundation for deriving analytical gradients which can be advantageous for optimisation-based applications.

1 Introduction

The widespread deployment of wind farms necessitates the use of accurate and efficient computational tools for preliminary design and optimisation (Veers et al., 2023). While Computational Fluid Dynamics (CFD) methods such as Large-Eddy Simulation (LES) and Reynolds-Averaged Navier-Stokes (RANS) offer detailed insights into turbine loading and wake dynamics, they are often too computationally intensive for preliminary wind-farm design and layout optimisation (Maas and Raasch, 2022). Mesoscale models require less computational power and have been employed to examine the large-scale interactions between wind turbine wakes and the turbulent atmospheric boundary layer, though they lack the detailed wake resolution provided by RANS and LES models (Fitch et al., 2012; Ali et al., 2023). Conversely, engineering wake models are comparatively faster and are extensively used in various wind-energy applications, including wind-farm layout optimisation and control (Hou et al., 2016; Bay et al., 2018; Shapiro et al., 2022). Engineering wake models, which assume that a turbine's wake is self

similar, represent the wake using a streamwise scaling deficit function and a shape function to describe the deficit distribution perpendicular to the streamwise direction. Various shape functions have been proposed, including top-hat profiles (Jensen, 1983), Gaussian profiles (Bastankhah and Porté-Agel, 2014), double-Gaussian profiles (Keane et al., 2016), super-Gaussian profiles (Blondel and Cathelain, 2020; Ouro and Lazennec, 2021), Cosine-bell profiles (Jensen, 1983; Zhang et al., 2020), and profiles based on the diffusion of a passive scalar (Cheng and Porté-Agel, 2018; Ali et al., 2024d). Among these, the Gaussian wake profile is widely adopted particularly for distances comparable to a typical inter-turbine spacing within a wind farm.

To assess the impact of an upstream turbine's wake on the onset flow of a downstream rotor, such as required to estimate the reduction of available kinetic energy flux due to wake effects, numerical methods often average the upstream deficit calculated at multiple control points across the rotor disk of the considered turbine. The number and distribution of these averaging points vary in the literature. Allaerts and Meyers (2019) employed a 16-point quadrature based on Holoborodko (2011) in their analysis of wind-farm blockage and induced gravity waves, whereas Stipa et al. (2024) utilised a cross-like distribution of 16 averaging points to enhance radial resolution across the rotor. Stanley and Ning (2019) used 100 equally-spread averaging points for the evaluation of the rotor-averaged deficit. Other studies proposed uniform radial and azimuthal distribution of averaging points across the rotor within the context of farm layout optimisation and control (Li et al., 2022; Ling et al., 2024).

Uncertainties can arise from the number, distribution, and averaging weights of the control points, especially when the shape of the upstream wake deviates from the axisymmetric form due to, for instance, wind-veer effects. Rather than numerical averaging, Ali et al. (2024a) developed an analytical expression for the circular-disk integration of an axisymmetric Gaussian function depicting the wake of an upstream turbine. Their formulation is applicable to any offset between the upstream turbine (wake source) and the considered turbine, but assumes that the upstream wake is axisymmetric and that both the upstream and downstream turbines have the same hub-height. Typically, turbines can be yawed relative to their onset wind yielding wakes that are not axisymmetric but rather of elliptic shape (Bastankhah and Porté-Agel, 2016). Additionally, wind-veer effects can cause planar shearing of the wake shape through stretching the wake elliptic contours and rotating their major axes (see Fig. 1 later in the article), resulting in further deviation from the axisymmetric wake shape (Abkar et al., 2018). Furthermore, onshore wind farms often have turbines with different hub heights due to non-uniform terrain, and offshore wind farms may have turbines of varying hub heights and diameters operating in close proximity.

In this study, we extend the analytical solution proposed by Ali et al. (2024a) by generalising the assumed upstream wake shape to include non-symmetry due to yawing of the wake source, wind-veer effects, and different hub-heights between the wake source and target turbine. The primary focus is on wind-turbine wakes, but the proposed expressions are also applicable to tidal-stream turbines and can be extended to vertical-axis turbines (both wind and tidal) due to the relevance of similar Gaussian wake profiles (e.g., Stallard et al., 2015; Ouro and Lazennec, 2021). Although rotor-induction effects can alter the onset wind profile of the considered turbine, we do not consider these effects similar to various engineering wake models. Additionally, we assume that the considered turbine is modelled as a uniform actuator disk, corresponding to uniform averaging weights across the turbine's rotor, and that the effects of blade geometry are neglected. The objective of the proposed analytical solutions is not to replace numerical approaches, which are the only available option for arbitrary wind-speed fields, but to provide an alternative approach in the specific case of Gaussian wakes. Furthermore, analytical solutions can be computationally cheaper

than numerical approaches, and for some scenarios (such as high wind veer) can be more accurate than numerical averaging at common resolutions from the literature.

The surface integration of a Gaussian field across a circular disk is often complicated because of the modified Bessel function that arises from the azimuthal integration of a shifted Gaussian function. As will be discussed later, the analytical solution of the rotor-averaged deficit over a circular disk will be derived based on some simplifying assumptions that limit the validity range of the analytical solution (more details in section 2.2). Conversely, the surface integration of a Gaussian field across an equivalent rectangular disk often has a closed-form analytical solution without the need to limit the solution's validity. By appropriate sizing of the rectangular disk of integration, highly accurate approximate analytical solutions of the surface integration across a circular disk can be obtained. DiDonato and Jarnagin (1961) used the circle-rectangle analogy to approximate the circular-disk integration of an elliptic Gaussian field using look-up tables of the error function. Furthermore, Ali et al. (2024d) obtained an approximate analytical solution of a complicated two-dimensional integration involving the modified Bessel function by making use of the circle-rectangle analogy based on the analytical solution of Ali et al. (2024b). Cheung et al. (2024) used the same analogy to obtain analytical solutions of a turbine's induction effects under various conditions using a Green-function approach. As such, we also derive an analytical solution of the rotor-averaged deficit for an equivalent rectangular disk, which is not limited by the simplifying assumptions of the circular-disk integration.

The rest of this paper is structured as follows. Section 2 presents generalised analytical expressions for the rotor-averaged deficit in the case of a circular disk (section 2.2) and an equivalent rectangular disk (section 2.3), which are verified against numerical solutions for a single upstream wake (sections 3.1 and 3.2) and for multiple upstream wakes (section 3.5). The effect of some relevant parameters on the rotor-averaged deficit is discussed in sections 3.3 and 3.4. The computational cost of the proposed solutions compared to numerical approaches are examined in section 3.6, and their accuracy against various numerical resolutions is quantified in section 3.7. The key findings of this paper are discussed in more detail in section 4 with a focus on compatibility with different wake superposition models and applicability to yawed turbines, with a summary in section 5. Appendices A–D contain mathematical details on the derivation of the generalised rotor-averaged deficit, whereas various resolutions and distributions of averaging points are summarised in Appendix E. Further mathematical manipulations regarding wake superposition are included in Appendix F following the discussion in section 4. Some additional material are included in Appendix G.

2 Generalised rotor-averaged deficit of an elliptic veered Gaussian wake

In this study, we seek to analytically evaluate a rotor-averaged deficit of a turbine operating within an upstream Gaussian wake whose shape and centre are defined. For simplicity, the expression for the rotor-averaged deficit is derived for a single upstream wake, but extension to multiple upstream wakes is straightforward (section 3.5). Some key definitions are presented first in section 2.1, followed by deriving analytical solutions in the case of a circular disk (section 2.2) and an equivalent rectangular disk (section 2.3). The presented analysis is applicable to any engineering wake model that utilises the Gaussian wake profile to describe the wake shape normal to the streamwise direction.

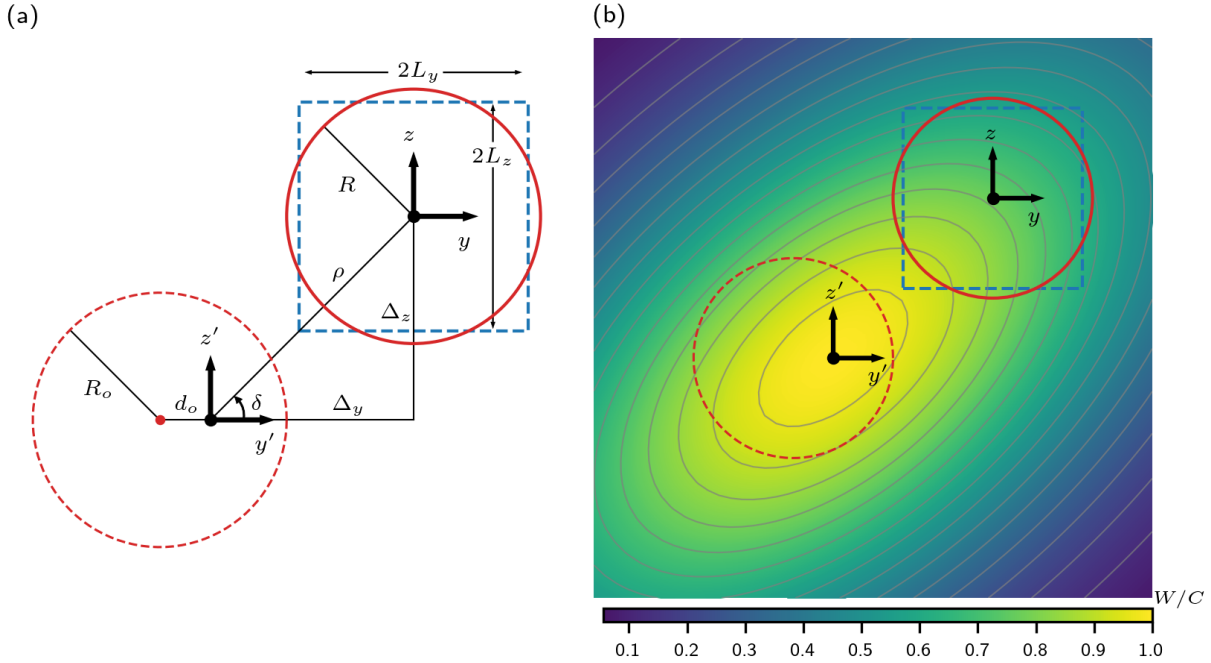


Figure 1. (a) Schematic of the wake axes ($y'-z'$) and the axes of the considered turbine ($y-z$) separated by the distances (Δ_y, Δ_z) with polar coordinates ρ and δ . The upstream turbine (wake source) is represented by the dashed red circle with radius R_o , whereas the considered turbine is represented by the solid red circle with radius R . The wake centre is deflected horizontally by d_o from the centre of the upstream turbine (red dot). An equivalent rectangle of the considered turbine (section 2.3) is shown in dashed blue with dimensions of $2L_y$ and $2L_z$ in y and z directions, respectively. (b) Sample contours of the normalised wind-speed deficit W/C (Eq. 1) calculated at an eccentricity $\xi = 0.4$ and a veer-coefficient $\omega = -0.6$, where the definitions of ξ (Eq. 3) and ω (Eq. 2) are provided in the main text. The red circles, the blue rectangle, and the axes $y'-z'$ and $y-z$ have the same definitions as in (a).

2.1 Problem definition

95 The normalised wind-speed deficit (W) due to the wake of an upstream turbine impacted by a constant transverse wind (causing wind veer) can be expressed as (Bastankhah and Porté-Agel, 2016; Abkar et al., 2018)

$$W(x, y', z') = 1 - \frac{u(x, y', z')}{\bar{u}_o} = C(x) e^{-(y' + \omega z')^2 / (2\sigma_y^2)} e^{-z'^2 / (2\sigma_z^2)}, \quad (1)$$

where u is the streamwise wind speed, \bar{u}_o is the rotor-averaged wind speed of the upstream turbine (wake source), C is a streamwise scaling function, and x is the streamwise distance between the two turbines. The variables y' and z' are the lateral and vertical coordinates respectively, in a plane normal to the streamwise direction with an origin at the wake centre, and

$$\omega = \Delta\alpha_o \left(\frac{x}{D_o} \right) \quad (2)$$

is a wind-veer coefficient with $\Delta\alpha_o$ being the difference in wind direction across the top and bottom tips of the upstream turbine (wake source) whose diameter is D_o . The quantities σ_y and σ_z are the wake standard deviations in y' and z' directions,

respectively. Figure 1 illustrates a schematic of an upstream turbine (of radius R_o) whose wake centre is deflected horizontally
 105 by a distance d_o . The Cartesian axes $y'-z'$ are placed at the centre of the wake in the plane containing the considered turbine
 which is at a streamwise distance x from the wake source. The centre of the considered turbine (of radius R) is located at $(\Delta_y,$
 $\Delta_z)$ with respect to the wake centre with polar coordinates ρ and δ . The Cartesian axes $y-z$ are placed at the centre of the
 considered turbine. The offset ρ is measured from the centre of the wake, which is assumed to be known from wake deflection
 models (e.g., Bastankhah and Porté-Agel, 2016; Qian and Ishihara, 2018; Snaiki and Makki, 2024).

110 For a yawed upstream turbine, the wake standard deviations σ_y and σ_z are not equal, resulting in elliptic wake contours
 rather than circular contours in the specific case of axisymmetric wake. We define the eccentricity $\xi \geq 0$ of the wake elliptic
 contours due to having non-equal σ_y and σ_z as

$$\xi = \sqrt{1 - \left(\frac{\sigma_y}{\sigma_z}\right)^2}. \quad (3)$$

Here, it is assumed that $\sigma_y \leq \sigma_z$, which is the typical case for yawed horizontal-axis wind turbines. However, it is noted that
 115 where relevant, scenarios with $\sigma_y > \sigma_z$ can be obtained by a rotation of axes. In the following calculations, σ_z will be denoted
 as σ and hence $\sigma_y = \sigma\sqrt{1 - \xi^2}$. A typical range for the eccentricity ξ can be identified using the empirical expressions for σ_y
 and σ_z for a yawed upstream turbine at a yaw misalignment γ_o

$$\sigma_z = \sigma = k_z^* x + \sigma_{z_0} D_o, \quad \text{and} \quad \sigma_y = \sigma\sqrt{1 - \xi^2} = k_y^* x + \sigma_{z_0} D_o \cos \gamma_o, \quad (4)$$

where k_z^* and k_y^* are the rates of wake expansion in z' and y' directions respectively, and $\sigma_{z_0} \approx 1/\sqrt{8}$ is an initial wake standard
 120 deviation (Bastankhah and Porté-Agel, 2016). For simplicity we assume that $k_z^* \approx k_y^* = k^*$, and hence

$$\xi^2 \approx 1 - \left(\frac{k^* x / \sigma_{z_0} + \cos \gamma_o}{k^* x / \sigma_{z_0} + 1}\right)^2 \leq 1 - \cos^2 \gamma_o. \quad (5)$$

The typical range of a turbine yaw angle is less than 30° (Zong and Porté-Agel, 2021), and hence the eccentricity of the wake
 elliptic contours $\xi < 0.5$ for a typical inter-turbine spacing.

A Gaussian wake description, as given in Eq. 1, assumes a neutral atmospheric boundary layer for which the typical magni-
 125 tude of wind veer is approximately of the order $0.03^\circ/\text{m}$ (Walter et al., 2009; Gao et al., 2021). Hence, for a large wind turbine
 (diameter ~ 220 m) operating in a neutral boundary layer, the difference in wind direction across its top and bottom tips is
 less than approximately 7° . While stable stratification and/or complex terrain can intensify wind veer (Ghobrial et al., 2024),
 we limit our calculations for the case of a circular disk (section 2.2) to neutral boundary layers with moderate wind veer (i.e.,
 $\Delta\alpha_o \lesssim 7^\circ$). The expression derived for the equivalent rectangular disk (section 2.3) will not be limited by the moderate-veer
 130 assumption.

The angle δ corresponds to the difference in hub-height between the upstream turbine (wake source) and the considered
 downstream turbine. In a typical wind farm, all turbines have the same hub-height, making $\delta = 0$ (or π). However, our calcu-
 lations consider δ as a variable to accommodate cases with differing hub heights, such as adjacent wind farms or non-uniform
 terrain. Rather than using linear averaging of the wind-speed deficit across the disk of integration, we generalise the averaging

135 process to an order $n > 0$ such that

$$\overline{W}^{(n)} = \left(\frac{1}{A} \iint_A W^n dA \right)^{1/n}, \quad (6)$$

where $\overline{W}^{(n)}$ is the n -th order rotor-averaged deficit, n is the averaging order, and A is the area of the disk depicting the turbine (circular in section 2.2 and rectangular in section 2.3). As such, if $n = 2$ then a root-mean-squared averaging of the deficit across the rotor is obtained.

140 To summarise, the objective is to determine the rotor-averaged deficit of a turbine of radius R operating within an upstream Gaussian wake defined by the standard deviation σ , the wake eccentricity ξ , the veer coefficient ω , and the streamwise scaling function C , by performing the surface integration in Eq. 6 following the definition of the normalised deficit W in Eq. 1. The considered turbine is offset from the wake centre by the radial distance ρ and the angle δ . We assume that the rotor disk of the considered turbine is normal to the free-stream direction implying that σ , ξ , ω , and C , are variables in the streamwise
 145 direction only. This simplifying assumption has no significant impact on the rotor-averaged deficit for small yaw angles (i.e., $\gamma \lesssim 30^\circ$) as well established in the literature. Specifically, the relative error from this simplifying assumption is on the order of $k^* \sin^2 \gamma \sim \mathcal{O}(10^{-3})$, which is negligible.

2.2 Analytical rotor-averaged deficit across a circular disk

The derivation in this section is a generalisation to the solution by Ali et al. (2024a) who solved a linear version of the problem
 150 (i.e., $n = 1$) but for an axisymmetric wake (i.e., $\xi = \omega = 0$) and for two turbines of the same hub-height (i.e., $\delta = 0$). For a circular disk of radius R and by using the definition of W (Eq. 1), Eq. 6 becomes

$$\overline{W}_c^{(n)} = C \left(\frac{1}{\pi R^2} \int_0^R \int_0^{2\pi} r e^{-n(y'+\omega z')^2/(2\sigma_y^2)} e^{-nz'^2/(2\sigma_z^2)} d\theta dr \right)^{1/n}, \quad (7)$$

where $\overline{W}_c^{(n)}$ is the rotor-averaged deficit of order n across a circular disk, and r and θ are the polar coordinates of the y - z axes placed at the centre of the considered turbine (Fig. 1). The coordinates y' - z' (of the wake centre) and y - z can be related using
 155 $y' = y + \Delta_y$ and $z' = z + \Delta_z$ (Fig. 1). These relations, along with $\langle y, z \rangle = r \langle \cos \theta, \sin \theta \rangle$ and $\langle \Delta_y, \Delta_z \rangle = \rho \langle \cos \delta, \sin \delta \rangle$, where $\langle t_1, t_2 \rangle$ means t_1 or t_2 , can be used to re-write Eq. 7 in the r - θ coordinates as (see Appendix A for derivation)

$$\overline{W}_c^{(n)} = C e^{-\rho^2/(2\sigma_*^2)} e^{-\rho^2 \cos(2\delta - \phi_{ns})/(2\sigma_{ns}^2)} \left(\underbrace{\int_0^1 \eta e^{-n\eta^2 R^2/(2\sigma_*^2)} \underbrace{\int_0^{2\pi} \frac{1}{\pi} e^{-n\eta^2 R^2 \cos(2\theta - \phi_{ns})/(2\sigma_{ns}^2)} e^{-n\eta R \rho \cos(\theta - \phi_s)/\sigma_s^2} d\theta}_{M_\theta} d\eta}_{M_\eta} \right)^{1/n}, \quad (8)$$

where $\eta = r/R$. In Eq. 8, three new length scales are introduced: σ_* , σ_{ns} , and σ_s along with two new angles: ϕ_{ns} and ϕ_s , which are defined in terms of the wake standard deviation σ , the eccentricity ξ , the veer coefficient ω , and the angle δ as

$$\sigma_*^2 = \frac{2\sigma^2(1-\xi^2)}{2+\omega^2-\xi^2}, \quad \sigma_{\text{ns}}^2 = \frac{2\sigma^2(1-\xi^2)}{\sqrt{(\omega^2-\xi^2)^2+4\omega^2}}, \quad \sigma_s^2 = \frac{\sigma^2(1-\xi^2)\cos\phi_s}{\cos\delta+\omega\sin\delta}, \quad \tan\phi_{\text{ns}} = \frac{2\omega}{\xi^2-\omega^2}, \quad \tan\phi_s = \omega + \frac{(1-\xi^2)\tan\delta}{1+\omega\tan\delta}. \quad (9)$$

160

The subscript “ns” refers to wake non-symmetry. In case of an axisymmetric wake (i.e., $\omega = \xi = 0$), we have $\sigma_{\text{ns}}^{-1} = 0$ and hence its corresponding exponential terms in Eq. 8 vanish. Also, when the wake is axisymmetric we have $\sigma_* = \sigma_s = \sigma$, and $\phi_s = \delta$. The solution to the integral M_θ in Eq. 8 is (see derivation in Appendix B)

$$M_\theta = 2I_0 \left(\frac{n\eta R\rho}{\sigma_s^2} \right) I_0 \left(\frac{n\eta^2 R^2}{2\sigma_{\text{ns}}^2} \right) + 4 \sum_{\nu \geq 1} (-1)^\nu \cos(\nu\phi) I_{2\nu} \left(\frac{n\eta R\rho}{\sigma_s^2} \right) I_\nu \left(\frac{n\eta^2 R^2}{2\sigma_{\text{ns}}^2} \right), \quad (10)$$

165 where I_ν is the modified Bessel function of the first kind and integer order ν , and $\phi = 2\phi_s - \phi_{\text{ns}}$. By employing Eq. 10, an approximate solution of the integral M_η in Eq. 8 is (Appendix C)

$$M_\eta \approx 2\mu_0^{(n)} \left(1 + 2\mathcal{P}_{\text{ns}}^{(n)} \right) - \frac{4\sigma_*^2}{nR^2} e^{-nR^2/(2\sigma_*^2)} \mathcal{P}_{\text{ns}}^{(n)} \left[\frac{\lambda}{\rho} I_1 \left(\frac{nR\rho}{\sigma_s^2} \right) + \frac{\lambda^2}{\rho^2} I_2 \left(\frac{nR\rho}{\sigma_s^2} \right) \right], \quad (11)$$

where $\lambda = R\sigma_s^2/\sigma_*^2$, and

$$\mathcal{P}_{\text{ns}}^{(n)} = \cos(n\chi_{\text{ns}}^2 \sin\phi) e^{-n\chi_{\text{ns}}^2 \cos\phi} - 1, \quad (12)$$

170 with $\chi_{\text{ns}} = \rho\sigma_*^2/(2\sigma_{\text{ns}}\sigma_s^2)$. In Eq. 11, $\mu_0^{(n)}$ is

$$\mu_0^{(n)} = \int_0^1 \eta e^{-n\eta^2 R^2/(2\sigma_*^2)} I_0 \left(\frac{n\eta R\rho}{\sigma_s^2} \right) d\eta. \quad (13)$$

In the case of an axisymmetric wake ($\sigma_{\text{ns}}^{-1} = 0$), we have $\chi_{\text{ns}} = \mathcal{P}_{\text{ns}}^{(n)} = 0$ and Eq. 11 simplifies to $M_\eta \approx 2\mu_0^{(n)}$. Therefore, Eq. 11 indicates that the solution of the non-axisymmetric wake (Eq. 1) is a perturbation (second term in Eq. 11) to a scaled axisymmetric solution (scaled by $1 + 2\mathcal{P}_{\text{ns}}^{(n)}$). Additionally, Eq. 11 contains terms in the form $I_\nu(nR\rho/\sigma_s^2)/\rho$, which has a
 175 finite value when there is no offset between the wake source and the considered turbine ($\rho = 0$) as $\lim_{\rho \rightarrow 0} I_\nu(nR\rho/\sigma_s^2)/\rho = 1/(2^\nu \nu!)$. Nonetheless, at no offset ($\rho = 0$), we have $\mathcal{P}_{\text{ns}}^{(n)} = 0$ similar to the axisymmetric solution. This results from the simplifying assumption made in Appendix C to solve for M_η , where the terms $I_\nu(n\eta^2 R^2/(2\sigma_{\text{ns}}^2))$ were approximated by $(n\eta^2 R^2/(4\sigma_{\text{ns}}^2))^\nu/\nu!$ under the assumption that the argument of the modified Bessel function is small (following the limits on wind veer discussed in section 2.1), and hence $I_0(n\eta^2 R^2/(2\sigma_{\text{ns}}^2)) \sim 1$ was employed. This means that the stretching and
 180 shearing acting on the wake are assumed to have minimal effect on the wake shape close to the wake centre and are more profound far from the wake centre. We will show in section 3.1 that this assumption is acceptable for moderate values of wind veer by monitoring the average value (within the range $0 \leq \eta \leq 1$) of the argument of the modified Bessel function $\kappa^{(n)}$, defined as

$$\kappa^{(n)} = \frac{nR^2}{2\sigma_{\text{ns}}^2} \int_0^1 \eta^2 d\eta = \frac{nR^2}{6\sigma_{\text{ns}}^2}. \quad (14)$$

185 The parameter $\kappa^{(n)}$ is a measure of the skewness of the wind-speed deficit within the rotor of the considered turbine. When the wake is axisymmetric (i.e., no skewness), we have $\kappa^{(n)} = 0$. As the shearing and stretching of the upstream wake contours increase, the value of $\kappa^{(n)}$ increases, which can also be raised by the averaging order n . In sections 3.3 and 3.4, it will be shown that a practical limit on $\kappa^{(n)}$ is around 0.4–0.5, and higher values could result in larger deviation from the numerical solution.

The solution of the integral $\mu_0^{(n)}$ can be obtained by generalising the solution introduced by Ali et al. (2024a) based on
190 Rosenheinrich (2017)

$$\mu_0^{(n)} = \frac{\sigma_*^2}{nR^2} e^{-nR^2/(2\sigma_*^2)} \Psi^{(n)}(R, \rho, \sigma_s, \sigma_*), \quad (15)$$

where

$$\Psi^{(n)}(R, \rho, \sigma_s, \sigma_*) = I_0 \left(\frac{nR\rho}{\sigma_s^2} \right) \sum_{k \geq 1} \left[\left(\frac{nR^2}{2\sigma_*^2} \right)^k f_k(n\tau^2) \right] - \frac{nR\rho}{\sigma_s^2} I_1 \left(\frac{nR\rho}{\sigma_s^2} \right) \sum_{k \geq 1} \left[\left(\frac{nR^2}{2\sigma_*^2} \right)^k g_k(n\tau^2) \right], \quad (16)$$

and $\tau = \rho\sigma_*/\sigma_s^2$. The coefficients f_k and g_k follow the recursions

$$195 f_k(v) = \frac{f_{k-1}(v) + v g_{k-1}(v)}{k}, \quad g_k(v) = \frac{f_k(v) + 2g_{k-1}(v)}{2k}, \quad (17)$$

with $f_0 = 1, g_0 = 0$. The recursions in Eq. 17 converge rapidly within 6–10 iterations of simple algebraic calculations (scalar addition and multiplication). From Eq. 8, the final form of the rotor-averaged deficit is

$$\overline{W}_c^{(n)} \approx C e^{-\rho^2/(2\delta^2)} \left(2\mu_0^{(n)} \left(1 + 2\mathcal{P}_{\text{ns}}^{(n)} \right) - \frac{4\sigma_*^2}{nR^2} e^{-nR^2/(2\sigma_*^2)} \mathcal{P}_{\text{ns}}^{(n)} \left[\frac{\lambda}{\rho} I_1 \left(\frac{nR\rho}{\sigma_s^2} \right) + \frac{\lambda^2}{\rho^2} I_2 \left(\frac{nR\rho}{\sigma_s^2} \right) \right] \right)^{1/n}, \quad (18)$$

where $\delta^{-2} = \sigma_*^{-2} + \sigma_{\text{ns}}^{-2} \cos(2\delta - \phi_{\text{ns}})$. Equation 18 was implemented in Python and is available from Ali et al. (2024c).

200 2.3 Analytical rotor-averaged deficit across a rectangular disk

As discussed in section 2.2, the derived expression for the rotor-averaged deficit, assuming a circular-disk representation of the considered turbine (Eq. 18), is valid when the skewness parameter $\kappa^{(n)}$ is small (Eq. 14; approximately less than 0.4–0.5). However, when $\kappa^{(n)}$ is large because of strong veer and/or large averaging order n , Eq. 18 might no longer be valid or becomes of poor accuracy. As such, we derive herein an alternative expression for the rotor-averaged deficit assuming a rectangular-disk
205 representation of the considered turbine following similar analogies in the literature (Ali et al., 2024d; Cheung et al., 2024). The dimensions of the rectangular disk are $2L_y$ and $2L_z$ in y and z directions, respectively, with the same centre as the considered turbine (Fig. 1). We start by re-writing Eq. 6 for a rectangular disk with the aid of the definition of W in Eq. 1 as

$$\overline{W}_r^{(n)} = C \left(\frac{1}{4L_y L_z} \int_{\Delta_z - L_z}^{\Delta_z + L_z} dz' e^{-nz'^2/(2\sigma_z^2)} \int_{\Delta_y - L_y}^{\Delta_y + L_y} dy' e^{-n(y' + \omega z')^2/(2\sigma_y^2)} \right)^{1/n}, \quad (19)$$

where $\overline{W}_r^{(n)}$ is the n -th order rotor-averaged deficit for a rectangular disk. The solution of the inner integral (over y') is

$$210 \int_{\Delta_y - L_y}^{\Delta_y + L_y} e^{-n(y' + \omega z')^2/(2\sigma_y^2)} dy' = \sqrt{\frac{\pi(1 - \xi^2)}{2n}} \sigma \left(\operatorname{erf} \left(\frac{\Delta_y + L_y + \omega z'}{\sigma \sqrt{2(1 - \xi^2)/n}} \right) - \operatorname{erf} \left(\frac{\Delta_y - L_y + \omega z'}{\sigma \sqrt{2(1 - \xi^2)/n}} \right) \right), \quad (20)$$

where $\sigma_y = \sigma\sqrt{1-\xi^2}$ (Eq. 4) and erf is the error function defined as (Ng and Geller, 1969, 3.1; 1)

$$\text{erf}(h) = \frac{2}{\sqrt{\pi}} \int_0^h e^{-s^2} ds. \quad (21)$$

As such, Eq. 19 becomes

$$\bar{W}_r^{(n)} = C \left(\frac{\sigma}{4L_y L_z} \sqrt{\frac{\pi(1-\xi^2)}{2n}} (Q_1 - Q_2) \right)^{1/n}, \quad (22)$$

215 where Q_1 and Q_2 are defined as

$$Q_{(1,2)} = \int_{\Delta_z - L_z}^{\Delta_z + L_z} e^{-nz'^2/(2\sigma_z^2)} \text{erf} \left(\frac{\Delta_y \pm L_y + \omega z'}{\sigma\sqrt{2(1-\xi^2)/n}} \right) dz', \quad (23)$$

and the \pm sign in Eq. 23 corresponds to Q_1 and Q_2 , respectively. We can solve for the integrals Q_1 and Q_2 by making use of the generalised Owen's T function $\Omega(h, a, b)$ defined as (Przemo, 2019)

$$\begin{aligned} \Omega(h, a, b) &= \frac{1}{2\sqrt{2\pi}} \int_h^\infty e^{-s^2/2} \text{erf} \left(\frac{as+b}{\sqrt{2}} \right) ds \\ &= \frac{1}{2\pi} \left(\underbrace{\arctan(a) - \arctan(a+b/h) - \arctan\left(\frac{h+ab+a^2h}{b}\right)} \right) + \frac{1}{4} \underbrace{\text{erf}\left(\frac{b}{\sqrt{2(1-a^2)}}\right)} + \text{T}(h, a+b/h) \\ &\quad + \text{T}\left(\frac{b}{\sqrt{1+a^2}}, \frac{h+ab+a^2h}{b}\right), \end{aligned} \quad (24)$$

220 where $\text{T}(h, a)$ is Owen's T function defined as (Owen, 1956)

$$\text{T}(h, a) = \frac{1}{2\pi} \int_0^a \frac{e^{-h^2(1+s^2)/2}}{1+s^2} ds. \quad (25)$$

From the definition of the function Ω (Eq. 24) along with $\sigma_z = \sigma$ (Eq. 4), we can express the integrals Q_1 and Q_2 as

$$Q_{(1,2)} = 2\sqrt{\frac{2\pi}{n}} \sigma \left[\Omega \left(\frac{\Delta_z - L_z}{\sigma/\sqrt{n}}, \frac{\omega}{\sqrt{1-\xi^2}}, \frac{\Delta_y \pm L_y}{\sigma\sqrt{(1-\xi^2)/n}} \right) - \Omega \left(\frac{\Delta_z + L_z}{\sigma/\sqrt{n}}, \frac{\omega}{\sqrt{1-\xi^2}}, \frac{\Delta_y \pm L_y}{\sigma\sqrt{(1-\xi^2)/n}} \right) \right]. \quad (26)$$

Combining Eqs. 26 and 22 gives the final form of the disk-averaged deficit for a rectangular disk as

$$225 \quad \bar{W}_r^{(n)} = C \left(\frac{\pi\sigma^2\sqrt{1-\xi^2}}{2nL_y L_z} \sum_{s_y, s_z \in \{-1, 1\}} (-s_y s_z) \Omega \left(\frac{\Delta_z + s_z L_z}{\sigma/\sqrt{n}}, \frac{\omega}{\sqrt{1-\xi^2}}, \frac{\Delta_y + s_y L_y}{\sigma\sqrt{(1-\xi^2)/n}} \right) \right)^{1/n}. \quad (27)$$

The expression in Eq. 27 is simply calculating the function Ω (Eq. 24) at the four vertices of the rectangular disk ($\Delta_y \pm L_y, \Delta_z \pm L_z$) by changing the signs s_y and s_z between -1 and 1 . Because of symmetry, the underlined terms in Eq. 24 vanish

when summed over the four vertices of the rectangular disk with the signs $-s_y s_z$. As such, we can define a simplified version of Ω as

$$230 \quad \hat{\Omega}(h, a, b) = \frac{-1}{2\pi} \left(\arctan(a + b/h) + \arctan\left(\frac{h + ab + a^2 h}{b}\right) \right) + \mathsf{T}(h, a + b/h) + \mathsf{T}\left(\frac{b}{\sqrt{1 + a^2}}, \frac{h + ab + a^2 h}{b}\right), \quad (28)$$

and hence, by replacing Eq. 24 with Eq. 28, the rotor-averaged deficit of the rectangular disk is

$$\overline{W}_r^{(n)} = C \left(\frac{\pi \sigma^2 \sqrt{1 - \xi^2}}{2n L_y L_z} \sum_{s_y, s_z \in \{-1, 1\}} (-s_y s_z) \hat{\Omega}\left(\frac{\Delta_z + s_z L_z}{\sigma/\sqrt{n}}, \frac{\omega}{\sqrt{1 - \xi^2}}, \frac{\Delta_y + s_y L_y}{\sigma\sqrt{(1 - \xi^2)/n}}\right) \right)^{1/n}. \quad (29)$$

It should be noted that the two arctan functions in Eq. 28 can be combined into a single arctan function whose argument is $1/a$. However, determining the proper quadrant would require evaluating the original arguments (i.e., $a + b/h$ and $h/b +$
235 $a + a^2 h/b$), and hence Eq. 28 can be simply used in its current format. The functions T and Ω appear in the solution of the rectangular disk solely due to having $\omega > 0$ (i.e., due to wind veer). In case of no wind veer ($\omega = 0$), the rotor-averaged deficit for the rectangular disk simplifies to

$$\overline{W}_r^{(n)} \Big|_{\omega=0} = C \left[\frac{\pi \sigma^2 \sqrt{1 - \xi^2}}{8n L_y L_z} \left(\operatorname{erf}\left(\frac{\Delta_y + L_y}{\sigma\sqrt{2(1 - \xi^2)/n}}\right) - \operatorname{erf}\left(\frac{\Delta_y - L_y}{\sigma\sqrt{2(1 - \xi^2)/n}}\right) \right) \left(\operatorname{erf}\left(\frac{\Delta_z + L_z}{\sigma\sqrt{2/n}}\right) - \operatorname{erf}\left(\frac{\Delta_z - L_z}{\sigma\sqrt{2/n}}\right) \right) \right]^{1/n}. \quad (30)$$

Furthermore, for the specific case of axisymmetric wake ($\omega = \xi = 0$) the rotor-averaged deficit for the rectangular disk becomes
240

$$\overline{W}_r^{(n)} \Big|_{\xi=0} = C \left[\frac{\pi \sigma^2}{8n L_y L_z} \left(\operatorname{erf}\left(\frac{\Delta_y + L_y}{\sigma\sqrt{2/n}}\right) - \operatorname{erf}\left(\frac{\Delta_y - L_y}{\sigma\sqrt{2/n}}\right) \right) \left(\operatorname{erf}\left(\frac{\Delta_z + L_z}{\sigma\sqrt{2/n}}\right) - \operatorname{erf}\left(\frac{\Delta_z - L_z}{\sigma\sqrt{2/n}}\right) \right) \right]^{1/n}. \quad (31)$$

The remaining here is to find the size of the rectangular disk (L_y and L_z). It is not straightforward to obtain a mathematically exact expression for the size of the rectangular disk (L_y and L_z) that makes Eq. 29 matches the case of a circular disk exactly. However, we can compare the simplified linear solutions ($n = 1$) of both cases for an axisymmetric wake ($\omega = \xi = 0$) with no
245 offset ($\rho = 0$) and no hub-height difference ($\delta = 0$), just to have a rough estimate of L_y and L_z . We also simplify the rectangular disk to a square and assume that $L_y = L_z = L$. By doing so, Eqs. 7 and 31 simplify to

$$\frac{2\sigma^2}{R^2} \left(1 - e^{-R^2/(2\sigma^2)} \right) = \frac{\pi \sigma^2}{2L^2} \operatorname{erf}^2\left(\frac{L}{\sigma\sqrt{2}}\right). \quad (32)$$

We can further simplify Eq. 32 by retaining only terms up to σ^2 in the power-series expansions of the exponential function and the error function, which leads to $L/R \approx \sqrt{3}/2$. Although this is a simplified analysis conducted under many restrictions
250 (e.g., axisymmetric wake), it suggests that the ratio L/R is approximately 0.87. Through trial and error, we found that the ratio $L/R = 0.9$, which is close to the simplified ratio $\sqrt{3}/2$, gave best agreement against numerical solutions for a wide range of wake parameter as will be shown in section 3. As such, we assume that our equivalent rectangular disk is a square such that

$$L_y = L_z = 0.9R, \quad (33)$$

where R is the turbine's radius. A Python implementation of Eq. 29 is available from Ali et al. (2024c).

In this section, we verify the derived analytical solutions (Eqs. 18 and 29) by comparing them to numerical evaluations of the rotor-averaged deficit. First, we examine the case of a single upstream wake, considering both a circular disk (section 3.1) and a rectangular disk (section 3.2). The analysis in section 2 shows that deficit contours are influenced by wind veer, and also by the averaging order n . We investigate the impact of these parameters on the rotor-averaged deficit in sections 3.3 and 260 3.4, respectively. Of less impact on the rotor-averaged deficit is the yaw misalignment of the wake source, which is presented as additional material in Appendix G. Furthermore, we apply the derived analytical solutions (Eqs. 18 and 29) to scenarios with multiple upstream wakes, using various wake superposition models. For numerical reference, the analytical solutions are evaluated against a set of 2000 averaging points uniformly distributed across the rotor disk in a sunflower pattern as illustrated in Fig. E1 (see Appendix E). The computational cost of the derived analytical solutions compared to numerical averaging at 265 various resolutions is presented in section 3.6. Finally, the uncertainty in predicting the rotor-averaged deficit for the proposed analytical solutions and for various numerical resolutions are quantified compared to 2000-point averaging in section 3.7.

3.1 Single upstream wake for a circular disk

We consider the non-axisymmetric Gaussian wake of a wind turbine (Eq. 1) and compute the linear rotor-averaged deficit ($n = 1$) experienced by a downstream turbine modelled as a circular disk at various downstream distances relative to the wake 270 source. For this analysis, the upstream turbine (wake source) is configured to operate at a yaw misalignment $\gamma_o = 20^\circ$ and a thrust coefficient $C_t = 0.8$ in a free-stream turbulence intensity $T_i = 5\%$. The influence of varying the yaw misalignment of the wake source is small compared to veer effects as outlined in Appendix G. In line with the problem formulation in section 2.1, we assume a differential wind direction of 7° across the upstream turbine's top and bottom tips, representing moderate wind veer affecting a large turbine (diameter ~ 220 m), resulting in a veer coefficient $\omega \approx 0.122x/D_o$. Stronger 275 wind veer is considered in section 3.3. At each downstream position, the wake eccentricity ξ is calculated based on Eqs. 3 and 4 under the assumption of isotropic wake expansion rate normal to the free-stream direction (i.e., $k_y^* = k_z^* = k^*$) using the empirical expression $k^* = 0.003678 + 0.3837T_i$ (Bastankhah and Porté-Agel, 2014). Alternative empirical expressions for k^* are available; however, their use does not affect the verification process, as both analytical and numerical solutions depend on σ irrespective of how its defined. In the circular disk case, we focus on the linear rotor-averaged deficit ($n = 1$), given the 280 relatively high values of yaw misalignment ($\gamma_o = 20^\circ$) and wind veer ($\Delta\alpha_o = 7^\circ$) in this setup. Increasing the averaging order n here would extend the derived expression for a circular disk (Eq. 18) beyond the moderate wake shearing and stretching assumptions under which Eq. 18 was developed. Higher averaging orders can, however, be explored with lower wind veer or with a rectangular disk as discussed in more detail in section 3.4.

Figure 2 illustrates the normalised linear rotor-averaged wind speed deficit $\overline{W}_c^{(1)}/C$ as a function of the offset variation 285 (ρ/σ) at different downstream locations, comparing numerical results (markers) with analytical predictions (solid curves; Eq. 18) across several values of the angle δ . For each case, the values of the eccentricity ξ (Eq. 3), veer coefficient ω (Eq. 2), ratio R/σ (Eq. 4), and skewness parameter $\kappa^{(1)}$ (Eq. 14) are specified. During the derivation of Eq. 18, the skewness parameter

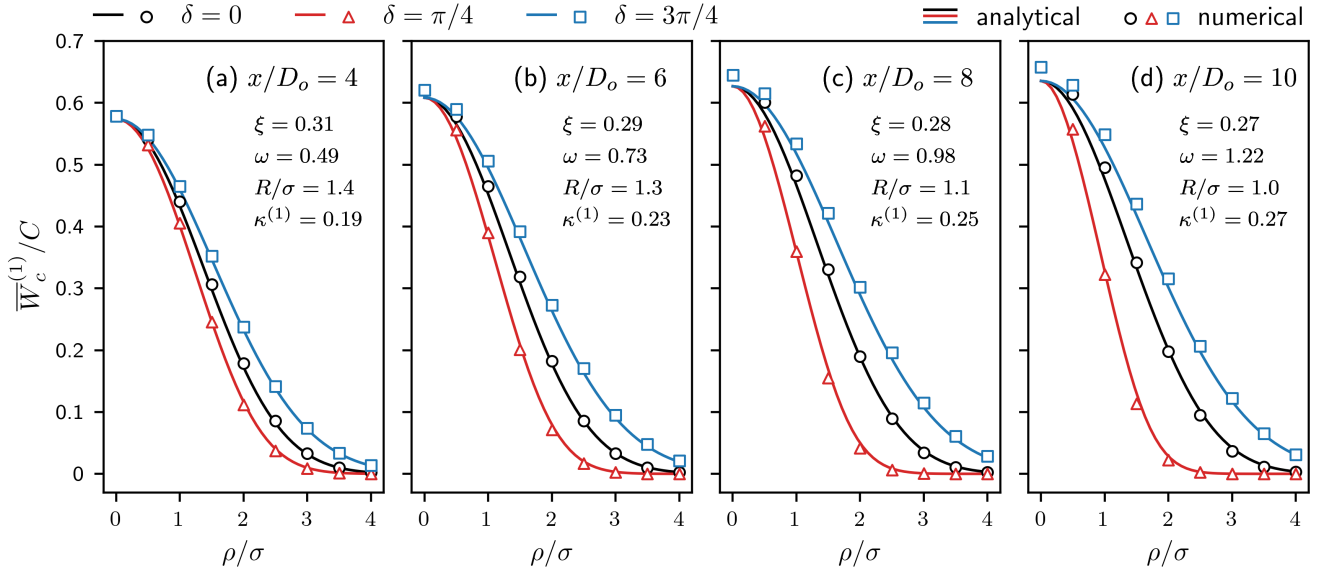


Figure 2. Normalised linear rotor-averaged deficit for a circular disk ($\overline{W}_c^{(1)}/C$) calculated numerically (markers) using the set of discrete points shown in Fig. E1 and analytically (solid curves) using Eq. 18 for different values of the normalised offset ρ/σ . The upstream turbine operates at a yaw misalignment $\gamma_o = 20^\circ$ and at a thrust coefficient $C_t = 0.8$ in a free-stream turbulence intensity $T_i = 5\%$ with a wind-direction difference $\Delta\alpha_o = 7^\circ$ across its top and bottom tips. Indicated for each downstream location x/D_o are the wind-veer coefficient $\omega \approx 0.122 x/D_o$ (for $\Delta\alpha_o = 7^\circ$; Eq. 2), the eccentricity of the wake elliptic contour ξ (for $\gamma_o = 20^\circ$; Eqs. 3 and 4), the ratio of the radius of the considered turbine to the wake standard deviation R/σ (σ is obtained from Eq. 4), and the skewness parameter $\kappa^{(1)}$ (Eq. 14). For each downstream location x/D_o , three values of the angle δ , which is the angle between the wake centre and the centre of the considered turbine (Fig. 1), are considered: 0 , $\pi/4$, and $3\pi/4$.

$\kappa^{(n)}$ was assumed to remain sufficiently small ($\lesssim 1$) to enable the approximation $I_\nu(n\eta^2 R^2/(2\sigma_{ns}^2)) \sim (n\eta^2 R^2/(4\sigma_{ns}^2))^\nu/\nu!$ (Appendix C). The $\kappa^{(1)}$ values shown in Fig. 2 verify this assumption, with the maximum $\kappa^{(1)}$ being approximately 0.27 at 10 diameters downstream of the wake source (Fig. 2d). A practical limit on $\kappa^{(n)}$ so that Eq. 18 maintains high accuracy is approximately 0.4–0.5 as will be outlined in sections 3.3 and 3.4.

Comparison with numerical evaluations of the rotor-averaged deficit confirms the high accuracy of Eq. 18, even at far-wake downstream distances ($x/D_o = 10$) where wind veer has significantly sheared the wake. Minor deviations between analytical and numerical results occur at $x/D_o = 10$ (Fig. 2d) with zero offset ($\rho = 0$). However, at this distance from the wake source (10 diameters downstream), the scaling function C diminishes enough that these differences are negligible for rotor-averaged deficit evaluation. At zero offset between the considered turbine and the wake centre ($\rho = 0$), the congruence between Eq. 18 and numerical solutions (Fig. 2) across cases indicates that the minimal impact of wake shearing and stretching on the wake centre was a valid assumption. As wake stretching and shearing intensify due to wind veer with increasing downstream distance ($\omega \propto x$; Eq. 2), the influence of the angle δ (hub-height difference) becomes increasingly important compared to positions closer to the wake source.

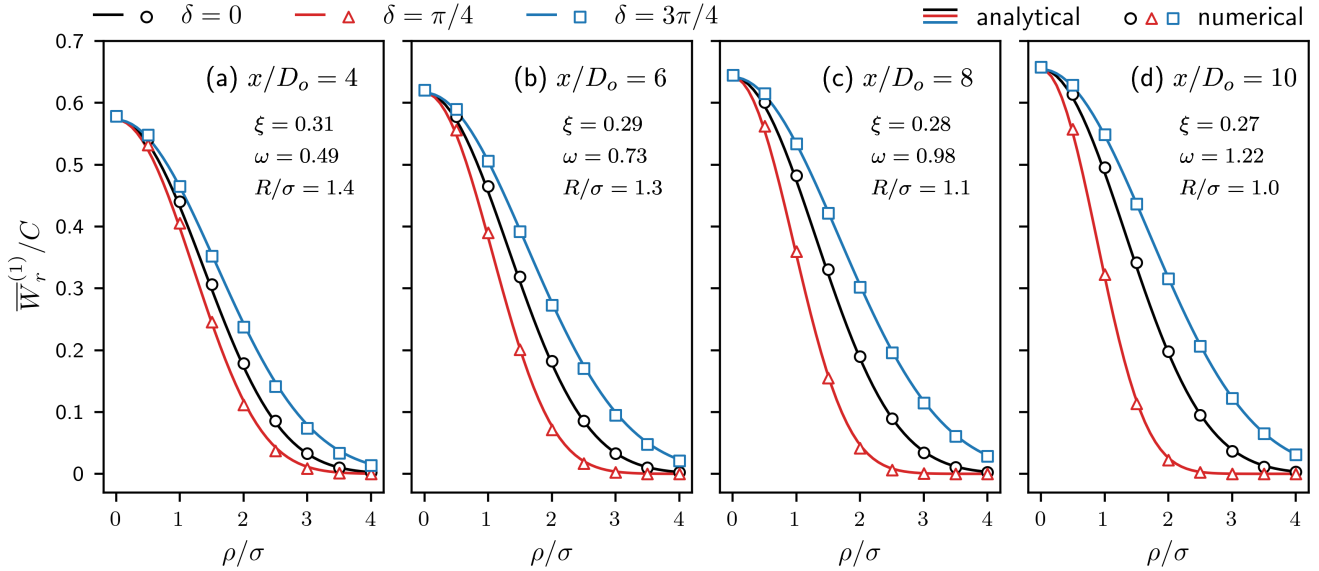


Figure 3. Same as Fig. 2 but for the case of a rectangular disk (Eq. 29).

3.2 Single upstream wake for a rectangular disk

We replicate the verification described in section 3.1, this time for a rectangular-disk representation of the turbine. In this case, the rotor-averaged deficit is defined by Eq. 29, with the disk size specified by Eq. 33. Under the same conditions outlined in section 3.1, Fig. 3 presents the offset variation of the normalised linear rotor-averaged wind speed deficit $\overline{W}_r^{(1)}/C$ at various downstream positions from the wake source and across different values of the angle δ . The comparison in Fig. 3 shows that the rectangular-disk solution (Eqs. 29 and 33) provides an excellent accuracy, performing better than the circular-disk solution without the limitations observed for the circular-disk solution at no offset (e.g., $\rho = 0$ in Figs. 2d and 3d). Beside the marginally higher accuracy, we will show in sections 3.3 and 3.4 that the rectangular-disk solution offers further advantages over the circular-disk solution by consistently predicting the rotor-averaged deficit with higher accuracy in cases of significant wind veer and/or higher averaging orders, scenarios in which the circular-disk solution is less accurate due to an elevated skewness parameter $\kappa^{(n)}$.

3.3 Effect of wind veer

In all comparisons shown thus far (Figs. 2 and 3), a wind-direction difference of $\Delta\alpha_o = 7^\circ$ was set across the top and bottom tips of the wake source, reflecting a moderate veer acting on a large upstream turbine (section 2.1). The circular-disk solution (Eq. 18) was derived based on the assumption of small/moderate veer, which implies a small skewness parameter ($\kappa^{(n)}$; Eq. 14). Here, we examine a range of wind-veer magnitudes by varying the wind-direction difference $\Delta\alpha_o$ for both circular and rectangular disks to evaluate the accuracy of each under conditions of low to high wind veer.

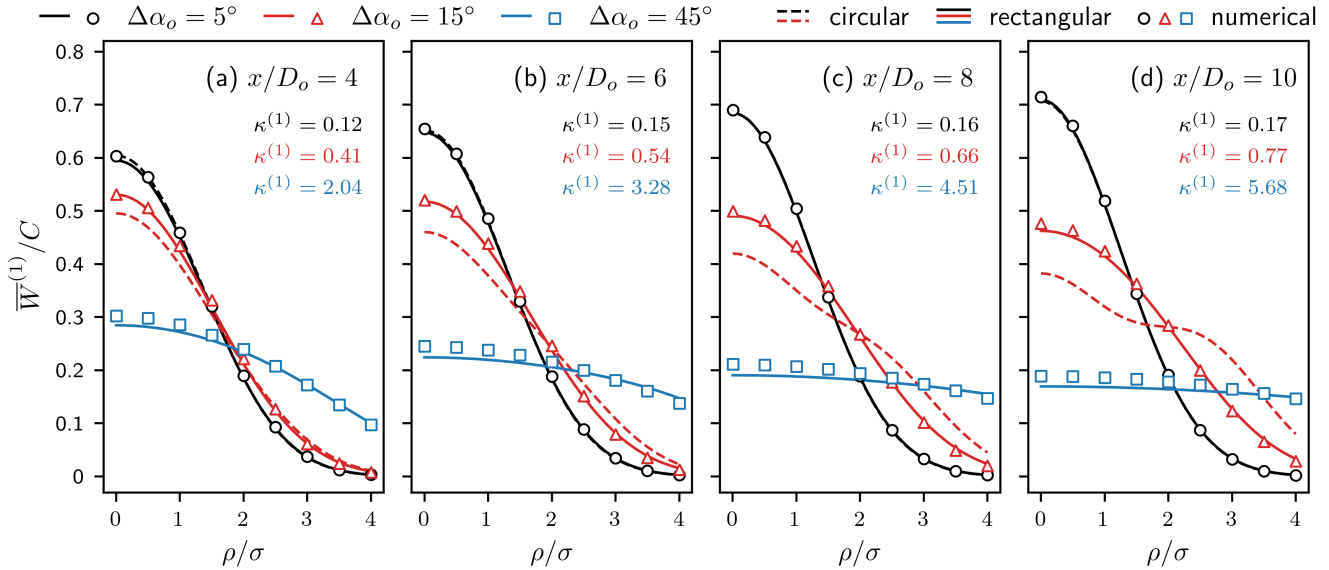


Figure 4. Comparing analytical and numerical linear rotor-averaged deficit for different values of wind veer by changing the wind-direction difference $\Delta\alpha_o$ across the top and bottom tips of the upstream turbine (wake source). The analytical solutions shown are that of a circular disk (dashed; Eq. 18) and a rectangular disk (solid; Eq. 29), whereas numerical averaging (markers) is obtained using the averaging points of Fig. E1. Similar to Fig. 3.1, the upstream turbine has a thrust coefficient $C_t = 0.8$ and operates in a free-stream turbulence intensity $T_i = 5\%$, but has no yaw (i.e., $\gamma_o = 0$). The skewness parameter $\kappa^{(1)}$ for each veer case is indicated, and $\delta = 0$ (same hub-height) for all the cases.

Figure 4 presents the linear rotor-averaged deficit for both circular (dashed curves; Eq. 18) and rectangular (solid curves; Eq. 29) disk models, compared against numerical averaging (markers). In this setup, the upstream turbine (wake source) has $C_t = 0.8$ and $T_i = 5\%$, as before, but with zero yaw ($\gamma_o = 0^\circ$) to isolate the impact of wind veer. Both the upstream and the considered turbines have the same hub-height (i.e., $\delta = 0$). For small wind veer ($\Delta\alpha_o = 5^\circ$, black curves in Fig. 4), both the circular- and rectangular-disk solutions match the numerical solutions with high accuracy.

The advantage of the rectangular-disk solution becomes evident for the case of moderate wind veer ($\Delta\alpha_o = 15^\circ$, red curves in Fig. 4), where the rectangular-disk solution matches the numerical one at all downstream locations, whereas the circular-disk solution deviates from the numerical solution with the streamwise distance (e.g., red dashed curve in Fig. 4d). In cases of strong veer ($\Delta\alpha_o = 45^\circ$), only the rectangular-disk solution (Eq. 29) remains valid, as the circular-disk solution (Eq. 18) fails due to the high skewness parameter ($\kappa^{(1)} > 2$), which violates the underlying assumptions of Eq. 18 (see section 2.2 and Appendix C for details). Nevertheless, the rectangular-disk solution continues to yield predictions of rotor averaged deficit that are consistent with numerical solutions even under extreme veer conditions within a neutral boundary layer. The results in Fig. 4 indicate that for the circular-disk solution, a practical limit for the skewness parameter $\kappa^{(n)}$ would be around 0.4, beyond which the circular-disk solution deviates from the numerical solution.

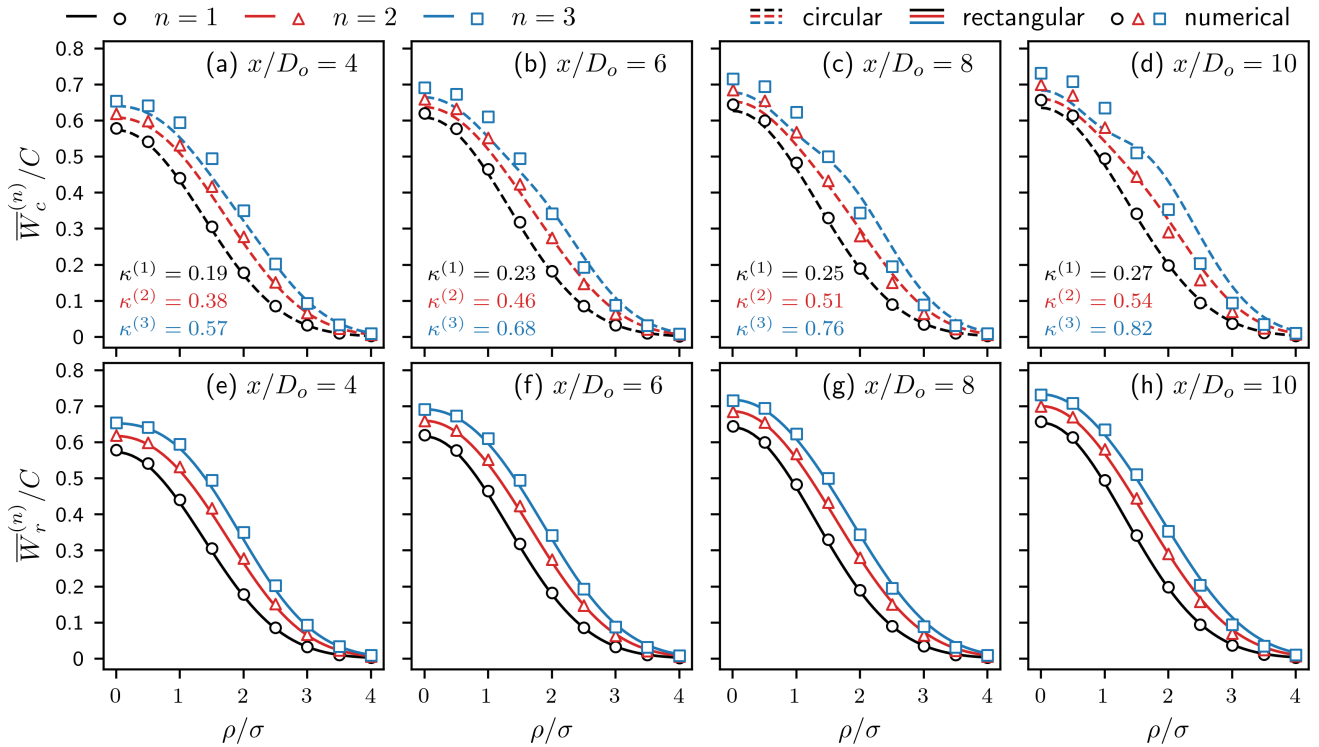


Figure 5. Comparison of the analytical (circular and rectangular) rotor-averaged deficit to numerical averaging for different averaging orders n . The top row corresponds to the circular-disk solution (Eq. 18), whereas the bottom row is the rectangular-disk solution (Eq. 29). The upstream turbine (wake source) is operating at a yaw misalignment $\gamma_o = 20^\circ$ at $C_t = 0.8$ in a free-stream turbulence intensity $T_i = 5\%$. The wind-direction difference across the top and bottom tips of the wake source $\Delta\alpha_o = 7^\circ$, and both turbines have the same hub-height (i.e., $\delta = 0$). The skewness parameter $\kappa^{(n)}$ (Eq. 14) is indicated for each case.

Generally, as wind veer increases (i.e., as shearing of deficit contours intensifies), the deficit contours take on the appearance of a horizontally oriented strip of non-zero deficit. This trend is evident in Fig. 4d for $\Delta\alpha_o = 45^\circ$, where the rotor-averaged deficit remains approximately constant with respect to the offset ρ . Although this extreme case was analysed to test the limits of the analytical solutions, it is unlikely to be encountered in a neutral boundary layer where the Gaussian wake model (Eq. 1) applies.

3.4 Effect of the averaging order

Beside wind veer, the averaging order n has a direct influence on the skewness parameter $\kappa^{(n)}$ (Eq. 14), and hence on the shearing of the deficit contours. Here, we examine the circular and rectangular solutions for different averaging orders n by comparing them to numerical rotor averaging as presented in Fig. 5. The wake source operates at yaw misalignment $\gamma_o = 20^\circ$ (effect of yawing the wake source is minimal as shown in Appendix G) and at $C_t = 0.8$ in a free-stream turbulence intensity

of 5%. The wind-direction difference across the tips of the wake source $\Delta\alpha_o = 7^\circ$ (Eq. 2), and both turbines have the same hub-height ($\delta = 0$).

The case of linear averaging ($n = 1$; black in Fig. 5) was already examined in previous sections, where both the circular (dashed curves) and rectangular (solid curves) solutions agree well with the numerical solution (markers). However, increasing the averaging order results in accuracy deterioration of the circular-disk solution, especially at larger distances downstream (e.g., Fig 5c, d). For instance, the circular-disk solution deviated significantly from the numerical solution for the cubic averaging ($n = 3$) at almost all downstream distances. Conversely, the rectangular-disk solution (Eq. 29) has excellent agreement with the numerical solution at all distances and all averaging orders, highlighting its robustness and accuracy over the circular-disk solution.

The impact of the averaging order n on the rotor-averaged deficit (analytical or numerical) is not trivial as indicated by Fig. 5. However, assessing the accuracy of each averaging order is out of the scope of the current study, and should be conducted by comparing different averaging orders to a higher-fidelity model.

3.5 Multiple upstream wakes

So far, we have examined the analytical solutions derived for a single upstream wake (Eqs. 18 and 29). However, in real applications, a wind turbine is often influenced by multiple upstream turbines, demanding the use of wake superposition models. When numerically calculating the rotor-averaged deficit from multiple upstream wakes, a discrete set of points over the rotor disk is used. At each point, wake superposition is applied for all upstream wakes individually, and the rotor-averaged deficit is determined from these superposed deficits. Alternatively, in the analytical approach, the rotor-averaged deficit is calculated for each upstream wake independently (using Eqs. 18 or 29) before superposing the rotor-averaged deficits. The effect of the sequence in which wake superposition and rotor averaging are applied depends on the structure of the superposition model. As shown by Ali et al. (2024a) for axisymmetric wakes, the order of superposition and rotor averaging has minimal influence on the overall rotor-averaged deficit, regardless of whether linear superposition (Niyayifar and Porté-Agel, 2015) or root-mean-squared (RMS) superposition (Voutsinas et al., 1990) is used, and they demonstrated this by application to the Horns Rev wind farm. In this section, we extend the analysis to non-axisymmetric wakes to assess the impact of the order of wake superposition and rotor averaging.

Expanding on the work by Ali et al. (2024a), we analyse the Horns Rev wind farm but with yawed turbines to evaluate the accuracy of Eqs. 18 and 29 when combined with different wake superposition models compared to numerical approaches. The yaw misalignment of each turbine is based on the optimisation study by Zhang et al. (2024), where a free-stream wind blows from West to East at a speed of 8 m s^{-1} and a turbulence intensity of 7.7%. Figure 6a shows the row-averaged optimised yaw misalignment of the Horns Rev wind farm along with a schematic of the farm's layout and wind direction. We use the wake deflection model from Bastankhah and Porté-Agel (2016) and the turbine-added turbulence model by Crespo and Hernandez (1996), assuming each turbine's wake has a Gaussian shape consistent with Eq. 1. Wind veer effects are excluded in this comparison (i.e., $\omega = 0$), and all rotor-averaged deficits are linear (i.e., $n = 1$), so the superscript ⁽¹⁾ is omitted for brevity.

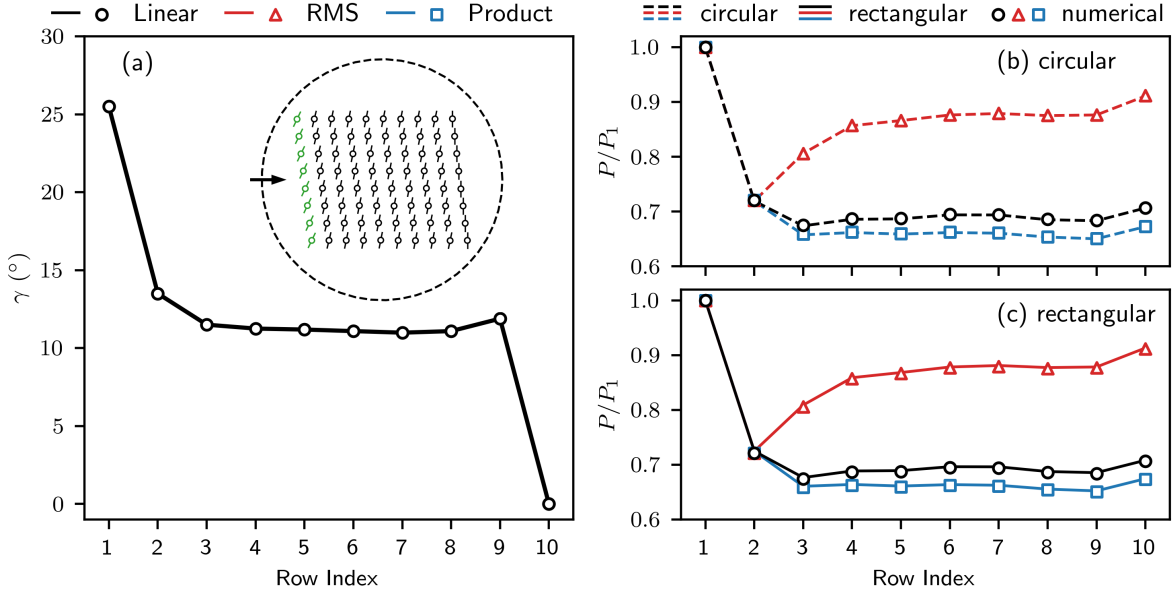


Figure 6. (a) The row-averaged yaw misalignment of the Horns Rev wind farm with respect to a free-stream wind from West to East (Zhang et al., 2024). Inset shows a schematic of the farm’s layout where the yaw of each turbine is indicated and the first row is highlighted in green to indicate row definition. (b) The row-averaged normalised power generation (in reference to first row) of the Horns Rev wind farm using linear wake superposition (Niayifar and Porté-Agel, 2015, black), root-mean-squared superposition (Voutsinas et al., 1990, red), and the product-based wake superposition model (Lanzilao and Meyers, 2022, blue). Power generation (Eq. 35) is obtained using linear averaging of a circular disk (Eq. 18) and is compared to a numerical solution using the averaging points shown in Fig. E1 (markers). The free-stream wind speed is 8 m s^{-1} and the free-stream turbulence intensity is 7.7%. (c) same as in (b) but for the rectangular-disk solution (Eq. 29).

375 We consider three wake superposition models: linear superposition (Niayifar and Porté-Agel, 2015), root-mean-squared
superposition (Voutsinas et al., 1990, hereafter RMS), and the product-based superposition by Lanzilao and Meyers (2022).
These models are expressed as

$$\bar{W}_{\text{lin}} = \frac{1}{U_\infty} \sum_{j \in S} \bar{u}_j \bar{W}_j, \quad \bar{W}_{\text{RMS}} = \frac{1}{U_\infty} \sqrt{\sum_{j \in S} \bar{u}_j^2 \bar{W}_j^2}, \quad \text{and} \quad \bar{W}_{\text{prod}} = 1 - \prod_{j \in S} (1 - \bar{W}_j), \quad (34)$$

where U_∞ denotes the free-stream wind speed, S is the set of upstream turbines influencing the considered turbine, and \bar{u}_j
380 and \bar{W}_j represent the rotor-averaged wind speed and the rotor-averaged deficit of a turbine of index j . Equations 34 follow
the analytical approach in which each upstream wake’s rotor-averaged deficit is computed first, followed by superposition. In
contrast, the numerical approach applies wake superposition across all upstream wakes before rotor averaging, as will be further
discussed in section 4. Following Zhang et al. (2024), the power generation of a turbine of index k with yaw misalignment γ_k
is given by

$$385 \quad P_k = P(\bar{u}_k) \cos^{1.8}(\gamma_k), \quad (35)$$

where $P(u)$ is based on the power-generation table of the Vestas V80-2.0 turbine (used in Horns Rev). Alternative methods to calculate power under yaw include modifying the power coefficient instead of absolute power (similar to Eq. 35), but this section focuses on a unified comparison framework for analytical and numerical solutions, regardless of the power calculation method.

390 Figures 6b and 6c illustrate the row-averaged power generation in the Horns Rev farm, calculated analytically (circular and rectangular solutions) and numerically (markers) for each superposition model: linear (black), RMS (red), and product-based (blue). The row-averaged power due to yaw follows a similar trend to that observed by Zhang et al. (2024), with reduced power in the first row, increased power in the second and third rows, and only minor variations (1–2%) in subsequent rows. This pattern is consistent across all three superposition models, though later rows (third and beyond) show greater sensitivity to the
 395 chosen superposition model than to yaw. The comparisons in Figs. 6b and 6c demonstrate that the analytical and numerical row-averaged power calculations are nearly identical for both circular and rectangular solutions. This result indicates that the order of wake superposition and rotor averaging does not affect the accuracy of Eqs. 18 and 29, making these equations suitable for use with the considered superposition models as well as any model with similar operators (linear, RMS, or product-based). This is further discussed in section 4.

400 3.6 Computational cost

To evaluate the computational efficiency of the derived analytical solutions (Eqs. 18 and 29) in comparison to the numerical calculation of the rotor-averaged deficit, we consider the power generation of a 25×25 wind farm. The specific conditions of the free-stream flow and turbine setup are irrelevant here, as the primary objective is to quantify computational costs. Numerical averaging was conducted using vectorised calculations at various resolutions, ranging from 16 to 2000 points.

405 Table 1 presents the percentage change in computational cost for the analytical solutions and for numerical averaging at different resolutions relative to using 16 averaging points, a common resolution from literature. Notably, the rectangular-disk analytical solution (Eq. 29) demonstrates a computational speed-up of approximately 10% compared to the 16-point numerical reference, making it the only approach that outperforms the baseline. Conversely, the circular-disk solution (Eq. 18) incurs a computational cost approximately 15% higher than the 16-point case, rendering its cost comparable to using 80 averaging points.

Table 1. Comparing the relative change in computational cost for the derived analytical solutions and for various numerical resolutions in reference to the cost of a numerical evaluation of the rotor-averaged deficit using 16 averaging points. If the computational cost of a specific experiment is t , the relative change is calculated as $(t - t_{16})/t_{16} \times 100\%$, where t_{16} is the computational cost of numerically averaging 16 points using vectorised calculations.

No. points	Rect.	50	Circle	100	500	2000
Relative change	-10.4%	6.7%	14.9%	21.1%	112.4%	443.8%

410

Table 2. Ranges of the driving parameters considered in uncertainty quantification scenarios. The angle γ_o is the yaw misalignment of the wake source, $\Delta\alpha_o$ is the wind-direction differential across the top and bottom tips of the wake source, n is the averaging order, x/D_o is the normalised streamwise distance measured from the wake source, δ is the azimuthal coordinate of the considered turbine centre measured from the wake centre (Fig.1), and ρ/σ is the normalised offset between the wake centre and the centre of the considered turbine (Fig. 1), where σ is the wake standard deviation (Eq. 4). Ranges written in the form $v_o : v_s : v_f$ means this variable ranges from v_o to v_f (inclusive) with a step of v_s .

Veer scenario	γ_o	$\Delta\alpha_o$	n	x/D_o	δ	ρ/σ
Small–moderate	$0^\circ : 10^\circ : 30^\circ$	$0^\circ : 1^\circ : 7^\circ$	{1,2,3}	4 : 2 : 10	$0 : \pi/4 : 3\pi/4$	0 : 0.5 : 4
Moderate–high	$0^\circ : 10^\circ : 30^\circ$	$10^\circ : 5^\circ : 45^\circ$	{1,2,3}	4 : 2 : 10	$0 : \pi/4 : 3\pi/4$	0 : 0.5 : 4

3.7 Uncertainty quantification

Here, we consider various resolutions and distributions of averaging points to quantify the uncertainty that arises when evaluating the rotor-averaged deficit compared to the 2000-point resolution shown in Fig. E1. The considered cases are the derived analytical solutions (Eqs. 18 and 29) and the distribution of averaging points shown in Fig. E2, which include the 16-point quadrature (Eq. E2) of Holoborodko (2011, hereafter, Q16), the 16-point cross-like distribution of Stipa et al. (2024, hereafter, C16), and various resolutions of the sunflower distribution (Eq. E1) ranging from 16 (S16) to 1000 (S1000) averaging points.

To quantify uncertainty, we calculate the root-mean-squared-error (RMSE) of each approach (analytical or numerical) against the 2000-point reference case (Fig. E1). RMSE is defined as

$$\text{RMSE} = \sqrt{\frac{1}{N_s} \sum_{k=1}^{N_s} (\bar{W}_k - \bar{W}_{\text{ref}})^2}, \quad (36)$$

where N_s is the number of tested scenarios (i.e., different combinations of driving parameters such as veer and yaw), \bar{W}_k is the rotor-averaged deficit for a scenario of index k , and \bar{W}_{ref} is the reference rotor-averaged deficit (from 2000 averaging points). Different scenarios are generated through different combinations of the yaw misalignment of the wake source (γ_o), the wind-direction differential across the wake source ($\Delta\alpha_o$), the averaging order n , the normalised streamwise distance x/D_o , the angle δ , and the normalised offset ρ/σ . Based on the analysis in sections 3.3, 3.4, and Appendix G (on the effect of γ_o), wind veer was shown to have the largest impact on the rotor-averaged deficit. As such, we create two sets of scenarios different from each other only in the range of $\Delta\alpha_o$ as indicated in Table 2, and where the circular-disk solution (Eq. 18) is tested only in the “small–moderate” veer scenario (first row in Table 2) within the range of applicability as established in sections 3.3 and 3.4.

Table 3 lists scaled values of RMSE (Eq. 36; scaled by 1000) for the aforementioned cases (analytical and numerical) and wake scenarios. As the number of averaging points increases, it is expected that RMSE drops as the predicted solution converges to that of the reference 2000-point case (e.g., S1000 vs S100 in table 3), but at the expense of computational cost as outlined in section 3.6. For the small–moderate veer scenario, the Q16 case has the lowest RMSE (0.8×10^{-3}) among the

Table 3. Scaled root-mean-squared-error ($1000 \times \text{RMSE}$; Eq. 36) of different rotor averaging cases including the rectangular-disk solution (Rect.; Eq. 29), the circular-disk solution (Circle; Eq. 18), the 16-point quadrature (Q16; Eq. E2) shown in Fig. E2a, the 16-point cross-like distribution shown in Fig. E2b, and various resolutions of the sunflower distribution (starting with S; Eq. E1) ranging from 16 averaging points (S16) to 1000 averaging points (S1000). The reference to which each case is compared is numerical averaging using 2000 points following a sunflower distribution as indicated in Fig. E1. The ranges of the driving parameters for both veer scenarios are listed in Table 2. The abbreviation NA stands for Not Applicable.

Veer scenario	Rect.	Circle	Q16	C16	S16	S100	S500	S1000
Small–moderate	3.4	5.4	0.8	29.4	12.5	3.2	0.9	0.4
Moderate–high	3.9	NA	8.3	42.9	18.2	3.8	1.0	0.4

analytical cases and the 16-point averaging cases, with an accuracy that is approximately similar to that of 500 averaging points (S500). For the same scenario, the rectangular-disk solution has approximately similar RMSE as 100 averaging points (S100),
435 whereas the circular-disk solution has slightly less accuracy.

The moderate–high veer scenario indicates that the rectangular-disk solution (Eq. 29) has higher accuracy than all the 16-point averaging cases at an RMSE of 3.9×10^{-3} (similar to the small–moderate veer scenario). In contrast, the accuracy of Q16 is significantly reduced with RMSE of 8.3×10^{-3} . The averaging distributions C16 and S16 have significantly less accuracy than the other cases, holding the highest RMSE for both veer scenarios. For the moderate–high veer scenario, 100 averaging
440 points provides comparable accuracy to the rectangular-disk solution, whilst 500 averaging points, which are computationally expensive (Table 1), are required to have the same accuracy of Q16 in the small–moderate veer scenario.

4 Discussion

In the current study, we derived and verified two expressions for the surface integration of a non-axisymmetric Gaussian wake over a circular disk and an equivalent rectangular disk, depicting the rotor of a turbine whose rotor-averaged deficit is sought.
445 The general integrated wake profile took into consideration wake stretching arising from the yawing of upstream turbines, and wake planar shearing due to wind-veer effects through a set of controlling variables: σ , ρ , δ , ξ , and ω , whose definitions were discussed in detail in section 2.1. The presented solutions are compatible with any wake deflection model from the literature as all distances were referenced to the wake centre. Alternatively, if the centre of the upstream turbine is sought to be the reference location, then the definitions of the offset ρ and the angle δ need modifications to account for the wake horizontal deflection
450 d_o . In this case, the modified offset ρ^* , and the modified angle δ^* measured from the centre of the upstream turbine are

$$\rho^* = \rho \sqrt{1 + 2 \left(\frac{d_o}{\rho} \right) \cos \delta + \left(\frac{d_o}{\rho} \right)^2}, \quad \text{and} \quad \tan \delta^* = \frac{\sin \delta}{d_o/\rho + \cos \delta}. \quad (37)$$

The expressions for the rotor-averaged deficit (Eqs. 18 and 29) were derived for a generic averaging order $n > 0$, where the case of $n = 1$ is equivalent to obtaining the averaged momentum deficit through the turbine rotor (for incompressible steady

flow), $n = 2$ corresponds to the averaged kinetic-energy deficit through the rotor, and $n = 3$ is equivalent to the averaged power deficit through the rotor. However, to obtain a solution for a circular disk (Eq. 18) it was assumed that the stretching and shearing of the wake contours are not large as quantified by the skewness parameter $\kappa^{(n)}$ (Eq. 14). Increasing the averaging order n naturally increases the level of skewness of the wake contours, and hence using higher-order averaging for a circular disk should be limited to cases of small/moderate wind veer (if any) to keep Eq. 18 within its validity region. The results in sections 3.3 and 3.4 indicated that for the circular-disk solution, a practical limit on the skewness parameter $\kappa^{(n)}$ was approximately 0.4–0.5. Conversely, the solution of the rectangular disk (Eq. 29) is not limited by this simplifying assumption and was shown to perform well even in the case of extreme wind veer (Fig. 4), giving it a large advantage against the circular-disk solution.

In terms of computational cost, both analytical solutions were comparable to vectorised calculations of the rotor-averaged deficit using 16 averaging points, where the rectangular-disk solution was approximately 10% faster and the circular-disk solution was approximately 15% slower. Though higher number of averaging points corresponds to higher accuracy, the computational cost becomes notably larger. As such, we examined the accuracy of the derived analytical solutions and of various numerical resolutions and distributions against high-resolution averaging (2000 points). For the same resolution (16 points), we found that the quadrature distribution (Fig. E2a) has significantly higher accuracy than the cross-like distribution (Fig. E2b) and than a random distribution (depicted by the sunflower distribution in Fig. E2c) of the same number of points, regardless of the intensity of deficit-contours shearing and stretching. The rectangular-disk solution showed high accuracy for both of the considered veer scenarios, with an RMSE $\sim \mathcal{O}(10^{-3})$ that is approximately two-orders of magnitude less than an average deficit ($W \sim \mathcal{O}(10^{-1})$), which is also equivalent to numerical averaging using approximately 100 points. The circular-disk solution had a marginally lower accuracy than the rectangular-disk solution, but was only applicable to the small–moderate veer scenario. Although both are of high accuracy, the 16-point quadrature has higher accuracy than the rectangular-disk solution for the small–moderate veer scenario, with an accuracy of approximately 500 averaging points, but was of lower accuracy when the deficit contours became highly sheared (moderate–high veer scenario). Nonetheless, the rectangular-disk solution was 10% faster in both scenarios. It should be noted that the expression for the size of the equivalent rectangular disk (Eq. 33) is empirical, which could slightly impair the accuracy of the rectangular-disk solution. However, if the size expression is optimised, higher accuracy could be achieved, though we find that the expression in Eq. 33 is accurate enough for a wide range of operating conditions including extreme-veer conditions.

The analytical solutions proposed in sections 2.2 and 2.3 (Eqs. 18 and 29) correspond to a single upstream wake, whereas an operational wind turbine is typically impacted by multiple upstream wakes whose deficits are superposed using a variety of wake superposition models (e.g., Lissaman, 1979; Voutsinas et al., 1990). In a numerical framework, wake superposition due to all upstream wakes is applied to each averaging point on the rotor’s disk independently followed by rotor averaging of the superposed wakes. Conversely, application of Eqs. 18 or 29 to a turbine subject to multiple upstream wakes requires the evaluation of the rotor-averaged deficit for each wake followed by a superposition of these deficits. For a superposition model that relies on a linear operator to combine upstream deficits (e.g., Lissaman, 1979; Niayifar and Porté-Agel, 2015; Zong and Porté-Agel, 2021; Dar and Porté-Agel, 2024), the numerical and analytical approaches discussed above are the same, meaning that the order of applying wake superposition and rotor averaging has no effect. However, other wake superposition models

rely on root-mean-squared operators (e.g., Katic et al., 1987; Voutsinas et al., 1990) for which the order of wake superposition
 490 and rotor averaging is not trivial. Ali et al. (2024a) showed mathematically that for a column of turbines of the same hub-
 height ($\delta = 0$) with no offset ($\rho = 0$) where the wake of each turbine is axisymmetric ($\xi = \omega = 0$), the order in which wake
 superposition and rotor averaging are applied results in insignificant differences as long as the number of upstream turbines
 with non-negligible deficits acting on the considered turbine is not large. They showed that for an analytical approach (rotor-
 averaging followed by superposition), the rotor-averaged deficit of the considered turbine is proportional to $e^{-1/(4\bar{\sigma}^2)}$, where $\bar{\sigma}$
 495 is a deficit-weighted averaged wake standard deviation for all the upstream turbines impacting the considered turbine, whereas
 for a numerical approach (superposition followed by rotor-averaging), the rotor-averaged deficit is proportional to $e^{-2/(9\bar{\sigma}^2)}$. In
 a typical wind farm, the number of upstream turbines with non-negligible deficits acting on a turbine is 2–3, where one of these
 turbines has the dominant wake effect, making these two exponents very close. Their conclusion can be easily extended to any
 averaging order n using the substitution $\bar{\sigma}^2 \rightarrow \bar{\sigma}^2/n$, and it also naturally extends to the considered case of a non-axisymmetric
 500 wake, as the non-axisymmetric solution was shown to be a perturbation to a scaled axisymmetric solution (Eq. 18). Application
 to the Horns Rev wind farm showed that the numerical and analytical approaches using root-mean-squared superposition gave
 indistinguishable results (Figs. 6b and 6c), where all upstream wakes for a specific turbine were considered in the evaluation
 of the turbine’s operating point.

The superposition model of Lanzilao and Meyers (2022) does not use linear nor root-mean-squared operators, but rather
 505 the product of the normalised rotor-averaged wind speeds of all upstream wake sources. We show in Appendix F that for this
 superposition model, and for any other superposition model of a similar operator, the numerical and analytical approaches are
 asymptotically identical if the upstream wakes of the considered turbine are assumed to operate independently. This assumption
 is justified as each turbine can be yawed independently of the other turbines depending on its onset wind, though such a strategy
 is not optimal for the whole wind farm performance. We also demonstrate that for small-enough upstream deficits ($W \lesssim 0.3$),
 510 this product-based superposition model converges to a non-weighted linear superposition model, which explains the closeness
 in the estimated power generation by the two wake superposition models when applied to the Horns Rev wind farm (Figs. 6b
 and 6c). Similar to root-mean-squared superposition, when this product-based superposition model was applied to the Horns
 Rev wind farm, there were no distinguishable differences between the analytical and numerical solutions (Fig. 6).

Some limitations should, however, be considered. The rotor-averaging process inherently assumes that a zero-deficit point
 515 on the rotor disk has a wind speed that is equal to that of the upstream turbine (wake source), rather than the free-stream wind
 speed or another background wind speed. This is referred to as partial waking of a turbine. Such an effect can be profound in the
 case of highly heterogeneous flow within a wind farm (e.g., in the case of extreme weather conditions such as hurricanes or in
 the case of extremely large wind farms). In such a scenario, all numerical and analytical approaches based on engineering wake
 models have shortcomings as the underlying assumptions of the wake-deficit model cannot predict the interactions between the
 520 wakes and the heterogeneous background flow, which can lead to inaccurate wind speeds of the unwaked regions of a rotor.

The obtained expressions for the rotor-averaged deficit were derived assuming that the considered turbine is normal to the
 free-stream flow, making the parameters σ , ξ , ω , and C constants across the rotor disk. If the considered turbine is yawed, these
 parameters are no longer constants but vary along the streamwise extents of the considered yawed turbine. These variations

are small for a small yaw angle γ and are typically ignored, as the integration over a circle normal to the free-stream flow is approximately similar to that across an inclined ellipse extending from $\hat{x} - R\sin\gamma$ to $\hat{x} + R\sin\gamma$, where \hat{x} is the streamwise coordinate of the centre of the yawed turbine. Moreover, a yawed turbine experiences transverse wind whose magnitude is typically much smaller than the streamwise wind speed (Martínez-Tossas et al., 2019). This transverse wind is not included in Eqs. 18 and 29 and needs to be modelled numerically, if required. Nonetheless, since the streamwise wind speed is dominant for small yaw angles and typical inter-turbine spacing, the derived analytical solutions present fast point-free expressions that can be used even if the considered turbine has a small yaw angle.

In some wind-energy applications, the nacelle wind-speed deficit (hub-height deficit) is used as a proxy for the wind speed across the entire rotor. In appendix G, we compared rotor averaging of the deficit with the nacelle-point deficit (see Fig. G1), indicating that the nacelle deficit can be significantly different from a rotor-averaged value, which could impair the accuracy of estimating a turbine's operating point. Hence, it is recommended to use a rotor-averaged value for the deficit rather than the nacelle-point deficit. We also explored the impact of yawing the wake source on the rotor-averaged deficit of the considered turbine, which was shown to be much less than other parameters such as wind veer and the averaging order. Although not addressed in this study, Eqs. 18 and 29 are differentiable, which allows for obtaining mathematical expressions for the gradients of the rotor-averaged wind speed of a turbine with respect to its location in a farm and/or to the operating point of upstream turbines.

540 5 Summary

Analytical expressions for the rotor-averaged wind-speed deficit of a turbine operating within a non-axisymmetric Gaussian wake were derived and verified for a general offset and hub-height difference between the wake source and the considered turbine. The derived expressions correspond to circular- and rectangular-disk representations of a turbine's rotor. The considered Gaussian wake included wake-stretching effects due to the yawing of the wake source as well as the planar shearing of the wake shape due to wind-veer effects. The presented expressions were verified against numerical evaluations of the rotor-averaged deficit indicating good agreement for the circular-disk case and excellent agreement for the rectangular case, which also outperformed numerical approaches in terms of computational cost. In terms of accuracy, the rectangular-disk solution was equivalent to using 100 averaging points on the rotor of the considered turbine, whereas the circular-disk solution had marginally less accuracy and is only applicable for small/moderate veer effects. In the case of highly veered flows, the presented rectangular-disk solution had higher accuracy than the well-established numerical averaging using a 16-point quadrature. The expressions of the rotor-averaged deficit for a single turbine wake can be applied to multiple wakes using any available superposition model that rely on linear operators, root-mean-squared operators or product operators as demonstrated by application to the Horns Rev wind farm with optimised yaw misalignment for each turbine. Whilst not derived in this study, the expressions for the rotor-averaged deficit are differentiable and can be beneficial for optimisation-based applications.

555 *Code availability.* A Python implementation of the presented analytical expressions for the rotor-averaged deficit (Eqs. 18 and 29) is publicly available from Ali et al. (2024c).

Appendix A: Transfer of axes for the Gaussian wake equation

In this appendix, we show how Eq. 7 can be transferred from the wake axes $y'-z'$ to the axes of the considered turbine $y-z$. From Eq. 7 along with the relation between the $y'-z'$ and $y-z$ axes (Fig. 1): $y' = y + \Delta_y$ and $z' = z + \Delta_z$, we have

$$560 \quad \bar{W}^{(n)} = C \left(\frac{1}{\pi R^2} \int_0^R \int_0^{2\pi} r e^{-n(y+\Delta_y+\omega(z+\Delta_z))^2/(2\sigma_y^2)} e^{-n(z+\Delta_z)^2/(2\sigma_z^2)} d\theta dr \right)^{1/n}, \quad (\text{A1})$$

By expanding the brackets in Eq. A1, the exponent can be written as $e^{-nr^2 c_{r^2}/2} e^{-nr\rho c_{r\rho}} e^{-n\rho^2 c_{\rho^2}/2}$, where c_{r^2} , $c_{r\rho}$, and c_{ρ^2} are coefficients of r^2 , $r\rho$, and ρ^2 , respectively. Using $\langle y, z \rangle = r \langle \cos\theta, \sin\theta \rangle$ and $\langle \Delta_y, \Delta_z \rangle = \rho \langle \cos\delta, \sin\delta \rangle$, where $\langle t_1, t_2 \rangle$ means t_1 or t_2 , we have

$$c_{r^2} = \frac{\cos^2\theta}{\sigma_y^2} + \frac{\sin^2\theta}{\sigma_z^2} + \frac{\omega \sin 2\theta}{\sigma_y^2} + \frac{\omega^2 \sin^2\theta}{\sigma_y^2}, \quad (\text{A2})$$

565

$$c_{r\rho} = \underbrace{\left(\frac{\omega \sin\delta + \cos\delta}{\sigma_y^2} \right)}_{a_1} \cos\theta + \underbrace{\left(\frac{1}{\sigma_z^2} + \omega \left(\frac{\omega \sin\delta + \cos\delta}{\sigma_y^2} \right) \right)}_{a_2} \sin\theta, \quad (\text{A3})$$

and

$$c_{\rho^2} = \frac{\cos^2\delta}{\sigma_y^2} + \frac{\sin^2\delta}{\sigma_z^2} + \frac{\omega \sin 2\delta}{\sigma_y^2} + \frac{\omega^2 \sin^2\delta}{\sigma_y^2}. \quad (\text{A4})$$

To simplify Eq. A2, we use the substitutions $\cos^2\theta = (1 + \cos 2\theta)/2$ and $\sin^2\theta = (1 - \cos 2\theta)/2$

$$570 \quad c_{r^2} = \underbrace{\left(\frac{1}{2\sigma_y^2} + \frac{1}{2\sigma_z^2} + \frac{\omega^2}{2\sigma_y^2} \right)}_{1/\sigma_*^2} + \underbrace{\left(\frac{1}{2\sigma_y^2} - \frac{1}{2\sigma_z^2} - \frac{\omega^2}{2\sigma_y^2} \right)}_{1/\sigma_{**}^2} \cos 2\theta + \left(\frac{\omega}{\sigma_y^2} \right) \sin 2\theta, \quad (\text{A5})$$

which can be further simplified by defining $1/\sigma_{\text{ns}}^2 = \sqrt{1/\sigma_{**}^4 + \omega^2/\sigma_y^4}$ and $\tan \phi_{\text{ns}} = \omega\sigma_{**}^2/\sigma_y^2$

$$c_{r^2} = \frac{1}{\sigma_*^2} + \frac{\cos(2\theta - \phi_{\text{ns}})}{\sigma_{\text{ns}}^2}. \quad (\text{A6})$$

Using the same procedure and by replacing θ with δ , we have

$$c_{\rho^2} = \frac{1}{\sigma_*^2} + \frac{\cos(2\delta - \phi_{\text{ns}})}{\sigma_{\text{ns}}^2}. \quad (\text{A7})$$

575 Finally, Eq. A3 can be simplified to

$$c_{r\rho} = \cos(\theta - \phi_s)/\sigma_s^2, \quad (\text{A8})$$

by defining $\sigma_s^2 = 1/\sqrt{a_1^2 + a_2^2}$ and $\tan \phi_s = a_2/a_1$, where a_1 and a_2 are defined in Eq. A3.

Appendix B: Azimuthal integration of non-symmetric Gaussian wake

In this appendix, we present the solution to the integral M_θ in Eq. 8, which was based on a solution proposed by Gaidash
580 (2023).

$$M_\theta = \frac{1}{\pi} \int_0^{2\pi} e^{-n\eta^2 R^2 \cos(2\theta - \phi_{\text{ns}})/(2\sigma_{\text{ns}}^2) - n\eta R\rho \cos(\theta - \phi_s)/\sigma_s^2} d\theta. \quad (\text{B1})$$

Using the Jacobi–Anger expansion (Abramowitz and Stegun, 1972, 9.1.41–45; p. 361), we can write

$$e^{-n\eta R\rho \cos(\theta - \phi_s)/\sigma_s^2} = \sum_{\nu \in \mathbb{Z}} (-1)^\nu I_\nu \left(\frac{n\eta R\rho}{\sigma_s^2} \right) e^{i\nu(\theta - \phi_{\text{ns}}/2)} e^{i\nu(\phi_{\text{ns}}/2 - \phi_s)}, \quad (\text{B2})$$

where I_ν is the modified Bessel function of order ν , and \mathbb{Z} is the set of integers. Using Eq. B2, the integral M_θ becomes

$$585 \quad M_\theta = \frac{1}{\pi} \sum_{\nu \in \mathbb{Z}} (-1)^\nu e^{i\nu(\phi_{\text{ns}}/2 - \phi_s)} I_\nu \left(\frac{n\eta R\rho}{\sigma_s^2} \right) \int_0^{2\pi} e^{-n\eta^2 R^2 \cos(2\theta - \phi_{\text{ns}})/(2\sigma_{\text{ns}}^2)} e^{i\nu(\theta - \phi_{\text{ns}}/2)} d\theta. \quad (\text{B3})$$

The integral in Eq. B3 vanishes for odd values of ν . Also, since M_θ is real we can write

$$M_\theta = 2 \sum_{\nu \in \mathbb{Z}} \cos(\nu(2\phi_s - \phi_{\text{ns}})) I_{2\nu} \left(\frac{n\eta R\rho}{\sigma_s^2} \right) \int_0^\pi e^{-n\eta^2 R^2 \cos(\theta' - \phi_{\text{ns}})/2\sigma_{\text{ns}}^2} \cos(\nu(\theta' - \phi_{\text{ns}})) d\theta', \quad (\text{B4})$$

where $\theta' = 2\theta$. The integral in Eq. B4 can be solved using (Gradshteyn and Ryzhik, 2007, 3.915(2) p. 491)

$$\int_0^\pi e^{-t \cos \zeta} \cos(\nu \zeta) d\zeta = (-1)^\nu \pi I_\nu(t), \quad (\text{B5})$$

590 which is insensitive to a phase shift ϕ_{ns} . Hence, M_θ becomes

$$M_\theta = 2 \sum_{\nu \in \mathbb{Z}} (-1)^\nu \cos(\nu(2\phi_s - \phi_{\text{ns}})) I_{2\nu} \left(\frac{n\eta R\rho}{\sigma_s^2} \right) I_\nu \left(\frac{n\eta^2 R^2}{2\sigma_{\text{ns}}^2} \right), \quad (\text{B6})$$

which can be further simplified using the fact that $I_{-\nu}(x) = I_\nu(x)$ for an integer ν

$$M_\theta = 2I_0 \left(\frac{n\eta R\rho}{\sigma_s^2} \right) I_0 \left(\frac{n\eta^2 R^2}{2\sigma_{\text{ns}}^2} \right) + 4 \sum_{\nu \geq 1} (-1)^\nu \cos(\nu(2\phi_s - \phi_{\text{ns}})) I_{2\nu} \left(\frac{n\eta R\rho}{\sigma_s^2} \right) I_\nu \left(\frac{n\eta^2 R^2}{2\sigma_{\text{ns}}^2} \right). \quad (\text{B7})$$

Appendix C: Radial integration of non-symmetric Gaussian wake

595 In this appendix, we provide a solution to the integral M_η defined in Eq. 8 along with solution of the integral M_θ (Eq. 10) which was detailed in Appendix B

$$M_\eta = 2 \int_0^1 \eta e^{-n\eta^2 R^2/(2\sigma_*^2)} I_0 \left(\frac{n\eta R\rho}{\sigma_s^2} \right) I_0 \left(\frac{n\eta^2 R^2}{2\sigma_{\text{ns}}^2} \right) d\eta +$$

$$4 \sum_{\nu \geq 1} (-1)^\nu \cos(\nu\phi) \int_0^1 \eta e^{-n\eta^2 R^2/(2\sigma_*^2)} I_{2\nu} \left(\frac{n\eta R\rho}{\sigma_s^2} \right) I_\nu \left(\frac{n\eta^2 R^2}{2\sigma_{\text{ns}}^2} \right) d\eta \quad (\text{C1})$$

The argument of the terms in the form $I_\nu(n\eta^2 R^2/(2\sigma_{\text{ns}}^2))$ is sufficiently small ($\lesssim 1$) for the ranges outlined in section 2.1 and for small values of n with an average value of $nR^2/(6\sigma_{\text{ns}}^2)$ for $0 \leq \eta \leq 1$. Hence, we employ the approximation
600 $I_\nu(n\eta^2 R^2/(2\sigma_{\text{ns}}^2)) \sim (n\eta^2 R^2/(4\sigma_{\text{ns}}^2))^\nu / \nu!$ (Abramowitz and Stegun, 1972, 9.6.7; p. 375), and the integral M_η becomes

$$M_\eta \approx 2\mu_0^{(n)} + 4 \sum_{\nu \geq 1} \frac{1}{\nu!} \left(\frac{-nR^2}{4\sigma_{\text{ns}}^2} \right)^\nu \cos(\nu\phi) \underbrace{\int_0^1 \eta^{1+2\nu} e^{-n\eta^2 R^2/(2\sigma_*^2)} I_{2\nu} \left(\frac{n\eta R\rho}{\sigma_s^2} \right) d\eta}_{\mu_{2\nu}^{(n)}}, \quad (\text{C2})$$

where

$$\mu_0^{(n)} = \int_0^1 \eta e^{-n\eta^2 R^2/(2\sigma_*^2)} I_0 \left(\frac{n\eta R\rho}{\sigma_s^2} \right) d\eta. \quad (\text{C3})$$

Solving the integral $\mu_0^{(n)}$ is discussed in more detail in section 2.2. The solution to the integrals $\mu_{2\nu}^{(n)}$ is derived in detail in
605 Appendix D.

$$\mu_{2\nu}^{(n)} = \left(\frac{\rho\sigma_*^2}{R\sigma_s^2} \right)^{2\nu} \left[\mu_0^{(n)} - \frac{\sigma_*^2}{nR^2} e^{-nR^2/(2\sigma_*^2)} \sum_{k=1}^{2\nu} \left(\frac{\rho\sigma_*^2}{R\sigma_s^2} \right)^{-k} I_k \left(\frac{nR\rho}{\sigma_s^2} \right) \right] \quad (\text{C4})$$

Therefore, M_η becomes

$$M_\eta \approx 2\mu_0^{(n)} \left(1 + 2 \sum_{\nu \geq 1} \frac{(-n\chi_{\text{ns}}^2)^\nu \cos(\nu\phi)}{\nu!} \right) - \frac{4\sigma_*^2}{nR^2} e^{-nR^2/(2\sigma_*^2)} \sum_{\nu \geq 1} \frac{(-n\chi_{\text{ns}}^2)^\nu \cos(\nu\phi)}{\nu!} \left[\sum_{k=1}^{2\nu} \left(\frac{\rho\sigma_*^2}{R\sigma_s^2} \right)^{-k} I_k \left(\frac{nR\rho}{\sigma_s^2} \right) \right], \quad (\text{C5})$$

where $\chi_{\text{ns}} = \rho\sigma_*^2/(2\sigma_{\text{ns}}\sigma_s^2)$. For the sum over ν , we have

$$610 \mathcal{P}_{\text{ns}}^{(n)} = \sum_{\nu \geq 1} \frac{(-n\chi_{\text{ns}}^2)^\nu \cos(\nu\phi)}{\nu!} = e^{-n\chi_{\text{ns}}^2 \cos\phi} \cos(n\chi_{\text{ns}}^2 \sin\phi) - 1. \quad (\text{C6})$$

Also, the modified Bessel function $I_\nu(x)$ decays rapidly with ν , and hence we only keep the terms with $\nu \leq 2$ in the right-hand side of Eq. C5. Therefore, Eq. C5 simplifies to

$$M_\eta \approx 2\mu_0^{(n)} \left(1 + 2\mathcal{P}_{\text{ns}}^{(n)} \right) - \frac{4\sigma_*^2}{nR^2} e^{-nR^2/(2\sigma_*^2)} \mathcal{P}_{\text{ns}}^{(n)} \left[\frac{\lambda}{\rho} I_1 \left(\frac{nR\rho}{\sigma_s^2} \right) + \frac{\lambda^2}{\rho^2} I_2 \left(\frac{nR\rho}{\sigma_s^2} \right) \right]. \quad (\text{C7})$$

where $\lambda = R\sigma_s^2/\sigma_*^2$.

615 Appendix D: A solution of an integral of the modified Bessel function

In this appendix, we present a solution to a generic integral in the form

$$\mu_\nu^{(n)}(\beta, \vartheta) = \int_0^1 \eta^{1+\nu} e^{-n\eta^2 \beta^2/2} I_\nu(n\eta\vartheta) d\eta, \quad (\text{D1})$$

where ν and n are integers, and β and ϑ are constants. To evaluate $\mu_\nu^{(n)}$ we employ $\partial(\eta^\nu I_\nu(n\eta\vartheta))/\partial\eta = n\vartheta\eta^\nu I_{\nu-1}(n\eta\vartheta)$. Integrating Eq. D1 by parts leads to the recursion

$$620 \quad \mu_\nu^{(n)}(\beta, \vartheta) = -\frac{e^{-n\beta^2/2}}{n\beta^2} I_\nu(n\vartheta) + \frac{\vartheta}{\beta^2} \mu_{\nu-1}^{(n)}(\beta, \vartheta), \quad (\text{D2})$$

which can be solved using the generating function $\mathcal{F}_n(\eta) = \sum_{\nu \geq 1} \mu_\nu^{(n)} \eta^\nu$. Multiplying Eq. D2 by η^ν and summing over ν gives

$$\sum_{\nu \geq 1} \mu_\nu^{(n)} \eta^\nu = -\frac{e^{-n\beta^2/2}}{n\beta^2} \sum_{\nu \geq 1} I_\nu(n\vartheta) \eta^\nu + \frac{\vartheta}{\beta^2} \sum_{\nu \geq 1} \mu_{\nu-1}^{(n)} \eta^\nu, \quad (\text{D3})$$

which simplifies into

$$\mathcal{F}_n(\eta) = -\frac{e^{-n\beta^2/2}}{n\beta^2} \sum_{\nu \geq 1} I_\nu(n\vartheta) \eta^\nu + \frac{\vartheta\eta}{\beta^2} (\mu_0^{(n)} + \mathcal{F}_n(\eta)). \quad (\text{D4})$$

$$625 \quad \text{Solving Eq. D4 for } \mathcal{F}_n(\eta) \text{ and using Taylor's expansion } (1 - \vartheta\eta/\beta^2)^{-1} = \sum_{m \geq 0} (\vartheta\eta/\beta^2)^m$$

$$\mathcal{F}_n(\eta) = -\frac{e^{-n\beta^2/2}}{n\beta^2} \sum_{\nu \geq 1} \sum_{m \geq 0} \left(\frac{\vartheta}{\beta^2}\right)^m I_\nu(n\vartheta) \eta^{\nu+m} + \mu_0^{(n)} \sum_{m \geq 0} \left(\frac{\vartheta\eta}{\beta^2}\right)^{m+1}. \quad (\text{D5})$$

Finally, the integral $\mu_\nu^{(n)}$ is the coefficient of η^ν in Eq. D5

$$\mu_\nu^{(n)}(\beta, \vartheta) = \left(\frac{\vartheta}{\beta^2}\right)^\nu \left[\mu_0^{(n)}(\beta, \vartheta) - \frac{e^{-n\beta^2/2}}{n\beta^2} \sum_{k=1}^{\nu} \left(\frac{\vartheta}{\beta^2}\right)^{-k} I_k(n\vartheta) \right], \quad (\text{D6})$$

where $\mu_0^{(n)}(\beta, \vartheta)$ is

$$630 \quad \mu_0^{(n)}(\beta, \vartheta) = \int_0^1 \eta e^{-n\eta^2\beta^2/2} I_0(n\eta\vartheta) d\eta. \quad (\text{D7})$$

Appendix E: Distribution of points across a circle for numerical averaging

In this appendix, we summarise various distributions and resolutions of averaging points that are used for numerical averaging of the rotor deficit.

As a reference case for verification of the derived analytical expressions (Eqs. 18 and 29) and for quantifying the uncertainty of lower resolution numerical averaging, we use a sunflower distribution of 2000 points. For a sunflower distribution, the polar coordinates r_k and θ_k of a point of index k (out of N total points) on a circle of radius R are defined as

$$r_k/R = \begin{cases} 1 & \text{if } k > N - b \\ \sqrt{\frac{k-1/2}{N-(b+1)/2}} & \text{otherwise} \end{cases}, \quad \text{and} \quad \theta_k = \frac{2\pi k}{\varphi^2}, \quad (\text{E1})$$

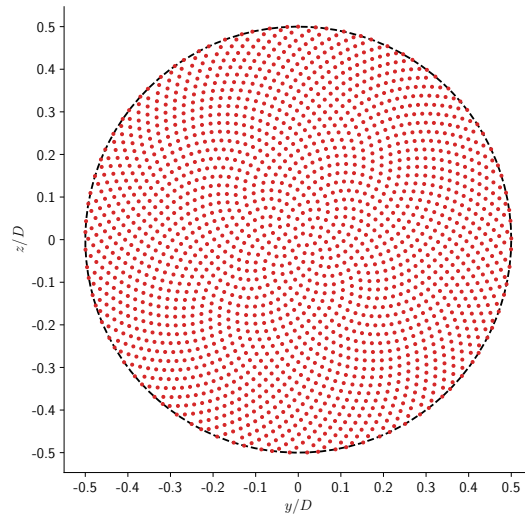


Figure E1. A uniform sunflower distribution of 2000 points over the surface a circle to be used to numerically evaluate the rotor-averaged deficit due to an upstream wake in the form of Eq. 1 and to provide a reference to verify the derived analytical expressions. The polar coordinates of the shown averaging points follow Eq. E1.

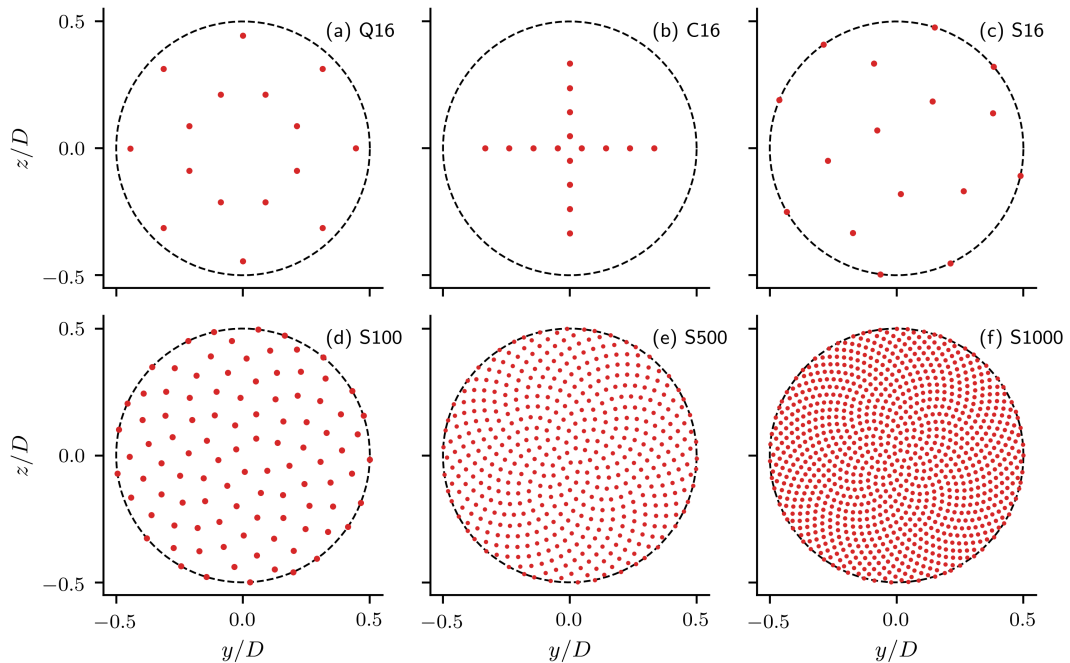


Figure E2. Different distributions and resolutions of averaging points following: (a) the quadrature of Holoborodko (2011, Eq. E2), (b) the cross-like distribution of Stipa et al. (2024), and (c–f) various resolutions of the sunflower distribution (Eq. E1).

where $\varphi = (\sqrt{5} + 1)/2$ is the golden ratio, and the constant $b = \text{round}(2\sqrt{N})$ with the function “round” returning the nearest integer. The resulting distribution of points is shown in Fig. E1. We also explore the distribution of 16 averaging points following the quadrature of Holoborodko (2011). For this quadrature, the polar coordinates of a point of index k are

$$r_k/R = \sqrt{\frac{3 + (-1)^{k+1}\sqrt{3}}{6}}, \quad \text{and} \quad \theta_k = 2\pi(k-1)/16, \quad \forall k \in \{1, 2, 3, \dots, 16\}, \quad (\text{E2})$$

Figure E2 shows different resolutions and distributions of averaging points including (a) the quadrature in Eq. E2, (b) the cross-like distribution of 16 averaging points following Stipa et al. (2024), and (c–f) various resolutions of the sunflower distribution (Eq. E1).

645 Appendix F: Emphasis on the order of rotor averaging and wake superposition for a product-based superposition model

In this appendix, we examine the effect of the order of applying wake superposition and the rotor averaging for the product-based wake superposition model of Lanzilao and Meyers (2022). The following analysis is generic for any averaging order $n > 0$, and for shortness the superscript (n) is dropped. Consider a wind turbine impacted by a set S of upstream wakes. Assuming a set of N discrete points on the rotor disk of the considered turbine, the numerical approach (wake superposition followed by rotor averaging) of obtaining the rotor-averaged deficit is

$$\text{num} \bar{W}_{\text{prod}} = \frac{1}{N} \sum_{k=1}^N \left(1 - \prod_{j \in S} (1 - W_j(k)) \right), \quad (\text{F1})$$

where $W_j(k)$ is the normalised wind-speed deficit of a point of index k on the rotor disk of the considered turbine due to the wake of an upstream turbine of index j . The product over the set S in Eq. F1 can be expanded as

$$\prod_{j \in S} (1 - W_j(k)) = 1 - \sum_{j \in S} W_j(k) + \sum_{\substack{i, j \in S \\ i \neq j}} W_i(k) W_j(k) + \mathcal{O}(W^3). \quad (\text{F2})$$

We can neglect the higher order terms of W (order 3 and higher) compared to the lower order terms (since $W < 1$), and hence Eq. F1 simplifies to

$$\text{num} \bar{W}_{\text{prod}} \approx \sum_{j \in S} \left(\frac{1}{N} \sum_{k=1}^N W_j(k) \right) - \sum_{\substack{i, j \in S \\ i \neq j}} \left(\frac{1}{N} \sum_{k=1}^N W_i(k) W_j(k) \right). \quad (\text{F3})$$

If the rotor averaging over a set of N points asymptotically approaches the exact average (i.e., $N^{-1} \sum_{k=1}^N W_j(k) \sim \bar{W}_j$), then

$$\text{num} \bar{W}_{\text{prod}} \simeq \sum_{j \in S} \bar{W}_j - \sum_{\substack{i, j \in S \\ i \neq j}} \bar{W}_i \bar{W}_j. \quad (\text{F4})$$

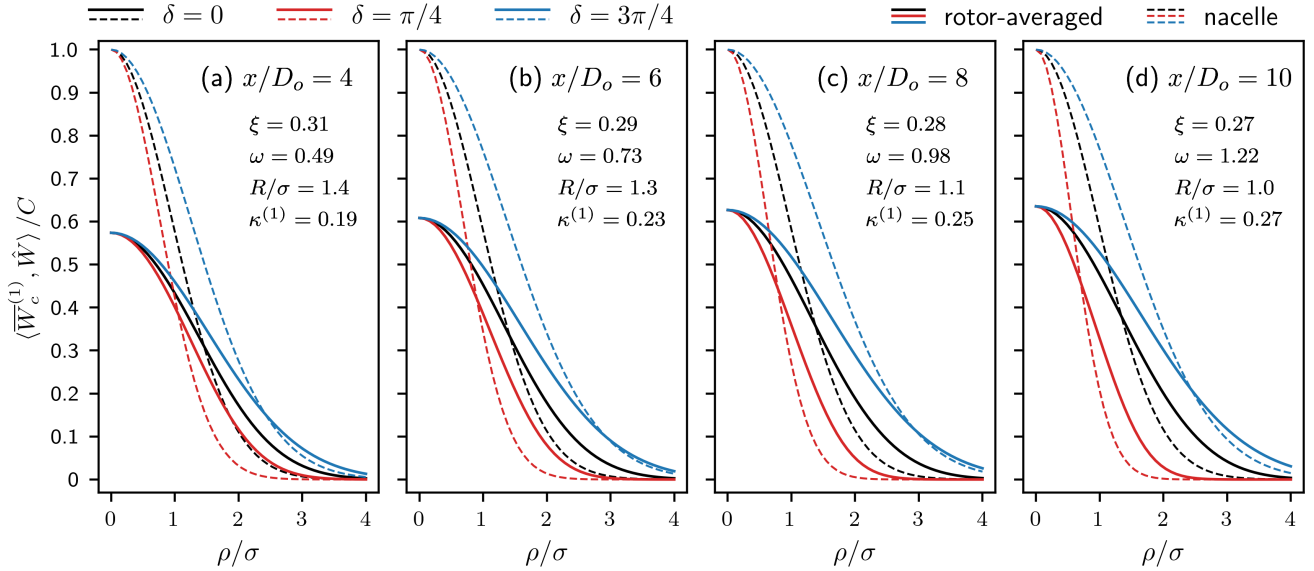


Figure G1. Comparing the linear rotor-averaged deficit (solid), assuming a circular disk (Eq. 18), to the nacelle wind-speed deficit (dashed; Eq. G1) for different values of the angle δ . The free-stream conditions and the setting of the upstream turbine (wake source) are the same as in section 3.1 and Fig. 2. The bra-ket notation in the label of the vertical axis takes the form $\langle t_1, t_2 \rangle$ which means t_1 or t_2 .

Alternatively, the corresponding analytical approach (rotor averaging followed by wake superposition) of obtaining the rotor-averaged deficit is

$$\text{anl} \overline{W}_{\text{prod}} = 1 - \prod_{j \in S} (1 - \overline{W}_j) \approx \sum_{j \in S} \overline{W}_j - \sum_{\substack{i, j \in S \\ i \neq j}} \overline{W}_i \overline{W}_j. \quad (\text{F5})$$

The difference between the numerical and analytical approaches originates from $\overline{W}_i \overline{W}_j$ in Eq. F4 versus $\overline{W}_i \overline{W}_j$ in Eq. F5, where the difference between these two quantities acts as a covariance for the set of upstream deficits. If the mutual impacts between the upstream turbines are neglected by assuming the turbines operate almost independently (i.e., $\overline{W}_i \overline{W}_j \sim \overline{W}_i \overline{W}_j$), then an asymptotic resemblance between $\text{num} \overline{W}_{\text{prod}}$ and $\text{anl} \overline{W}_{\text{prod}}$ is achieved. In the case of small-enough deficits, this product-based superposition model approaches a non-weighted linear superposition when $W^2 \ll W$.

Appendix G: Additional material

Here, additional material to the main text are included. We compare the rotor-averaged deficit for a circular disk (Eq. 18) with the nacelle deficit \hat{W} , which can be derived from Eq. 1 by substituting $\langle y', z' \rangle = \rho \langle \cos \delta, \sin \delta \rangle$:

$$\hat{W}/C = e^{-\rho^2 (\cos \delta + \omega \sin \delta)^2 / (2\sigma^2 (1 - \xi^2))} e^{-\rho^2 \sin^2 \delta / (2\sigma^2)}. \quad (\text{G1})$$

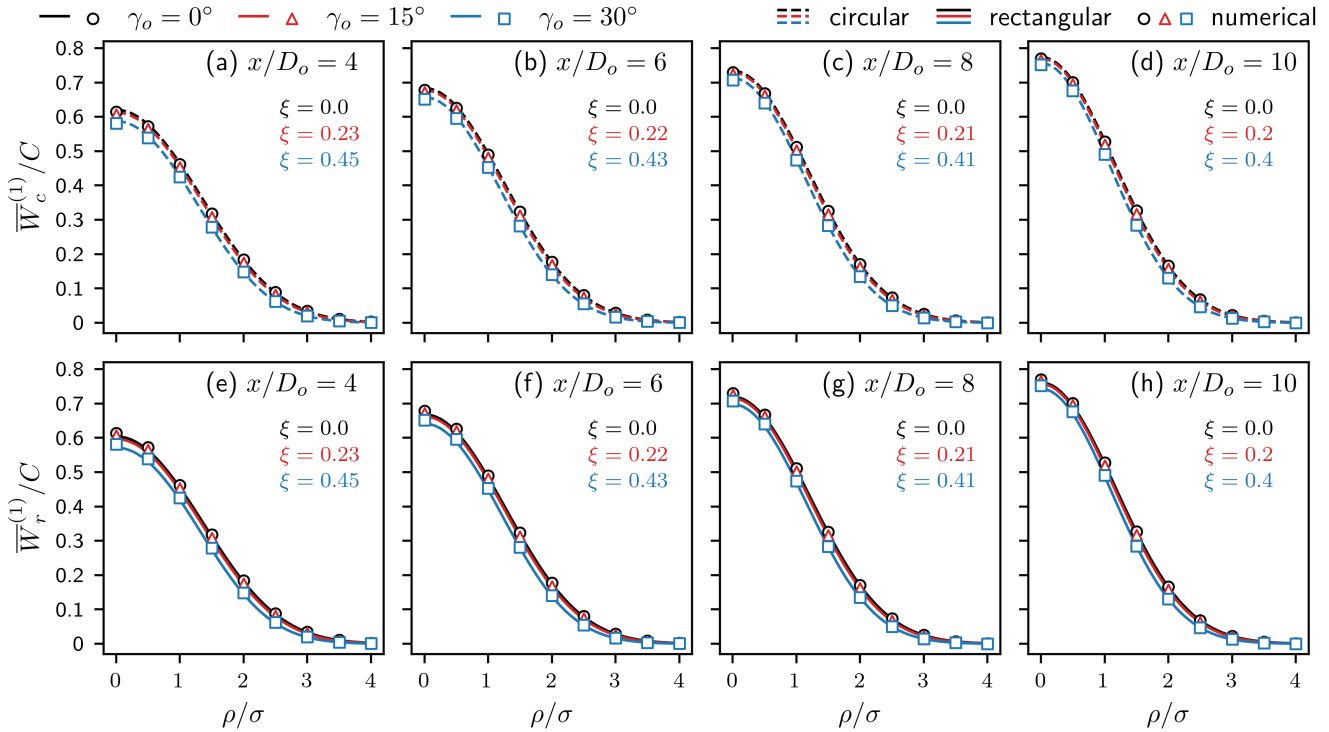


Figure G2. Same as in Fig. 2 but with no wind veer ($\omega = 0$) and variable yaw misalignment γ_o . Top row corresponds to the circular-disk solution (Eq. 18) and the bottom row is for the rectangular-disk solution (Eq. 29). The considered turbine have the same hub height as the wake source, and hence $\delta = 0$. The value of the eccentricity ξ (Eq. 3) is indicated for each case.

Under the same conditions as in section 3.1, Fig. G1 presents the offset variation of the normalised linear deficit for a circular disk ($\overline{W}_c^{(1)}$; solid) compared with the nacelle deficit (\hat{W} ; dashed) across different values of δ at multiple downstream locations. This comparison reveals that the nacelle deficit does not adequately represent the rotor-averaged deficit, particularly at zero offset ($\rho = 0$), where $\hat{W}/C = 1$ by definition, whereas the normalised rotor-averaged deficit lies approximately between 0.6 and 0.7 for the considered case. As such, we recommend using rotor-averaging (either analytically or numerically) for applications that require a representative wind speed to estimate a turbine's operating point.

Figure G2 shows the variation of the linear rotor-averaged deficit ($n = 1$) for the circular- and rectangular-disk solutions with the offset ρ at various yaw misalignments of the wake source. Both turbines have the same hub-height ($\delta = 0$), and no veer effects are considered ($\Delta\alpha_o = 0$). Both the circular- and rectangular-disk solutions agree well with the numerical solution (markers) for all yaw misalignments and at all downstream distances. The impact of the yaw angle on the rotor-averaged deficit is small, even for $\gamma_o = 30^\circ$, compared to wind-veer effects presented in section 3.3.

Author contributions. All the authors contributed to the conceptualisation of this study. KA derived the mathematical expressions and prepared the original draft of the manuscript, which was reviewed and edited by TS and PO. Funding acquisition and supervision was done by TS and PO.

Competing interests. The authors declare that they have no conflict of interest.

Financial support. This research was partly supported by the Supergen Offshore Renewable Energy Hub, funded by the Engineering and Physical Science Research Council (EPSRC) grants no. EP/S000747/1 and EP/Y016297/1. The present work has been partly supported by the Dame Kathleen Ollerenshaw Fellowship that Dr Ouro holds at the University of Manchester.

References

- Abkar, M., Sørensen, J., and Porté-Agel, F.: An Analytical Model for the Effect of Vertical Wind Veer on Wind Turbine Wakes, *Energies*, 11, 1838, <https://doi.org/10.3390/en11071838>, 2018.
- Abramowitz, M. and Stegun, I. A.: *Handbook of Mathematical Functions with formulas, graphs, and mathematical tables*, Dover Publications, 695 1972.
- Ali, K., Schultz, D. M., Revell, A., Stallard, T., and Ouro, P.: Assessment of Five Wind-Farm Parameterizations in the Weather Research and Forecasting Model: A Case Study of Wind Farms in the North Sea, *Monthly Weather Review*, 151, 2333 – 2359, <https://doi.org/10.1175/MWR-D-23-0006.1>, 2023.
- Ali, K., Stallard, T., and Ouro, P.: Evaluating wind-farm power generation using a new direct integration of axisymmetric turbine wake, 700 *Journal of Physics: Conference Series*, 2767, 092015, <https://doi.org/10.1088/1742-6596/2767/9/092015>, 2024a.
- Ali, K., Stallard, T., and Ouro, P.: An exact solution of a momentum-conservation condition for scalar diffusion from a uniform-concentration region, *ResearchGate*, <https://doi.org/10.13140/RG.2.2.27966.09287>, preprint, 2024b.
- Ali, K., Stallard, T., and Ouro, P.: Analytical evaluation of non-axisymmetric Gaussian wind-turbine wake including yaw and wind-veer effects, <https://doi.org/10.5281/zenodo.14170708>, 2024c.
- 705 Ali, K., Stallard, T., and Ouro, P.: A diffusion-based wind turbine wake model, *Journal of Fluid Mechanics*, <https://doi.org/10.1017/jfm.2024.1077>, 2024d.
- Allaerts, D. and Meyers, J.: Sensitivity and feedback of wind-farm-induced gravity waves, *Journal of Fluid Mechanics*, 862, 990–1028, <https://doi.org/10.1017/jfm.2018.969>, 2019.
- Bastankhah, M. and Porté-Agel, F.: A new analytical model for wind-turbine wakes, *Renewable Energy*, 70, 116–123, 710 <https://doi.org/10.1016/j.renene.2014.01.002>, Special issue on aerodynamics of offshore wind energy systems and wakes, 2014.
- Bastankhah, M. and Porté-Agel, F.: Experimental and theoretical study of wind turbine wakes in yawed conditions, *Journal of Fluid Mechanics*, 806, 506–541, <https://doi.org/10.1017/jfm.2016.595>, 2016.
- Bay, C. J., Annoni, J., Taylor, T., Pao, L., and Johnson, K.: Active Power Control for Wind Farms Using Distributed Model Predictive Control and Nearest Neighbor Communication, in: *2018 Annual American Control Conference (ACC)*, pp. 682–687, 715 <https://doi.org/10.23919/ACC.2018.8431764>, 2018.
- Blondel, F. and Cathelain, M.: An alternative form of the super-Gaussian wind turbine wake model, *Wind Energy Science*, 5, 1225–1236, <https://doi.org/10.5194/wes-5-1225-2020>, 2020.
- Cheng, W.-C. and Porté-Agel, F.: A Simple Physically-Based Model for Wind-Turbine Wake Growth in a Turbulent Boundary Layer, *Boundary-Layer Meteorology*, 169, 1–10, <https://doi.org/10.1007/s10546-018-0366-2>, 2018.
- 720 Cheung, L., Brown, K., Sakievich, P., deVelder, N., Herges, T., Houck, D., and Hsieh, A.: A Green’s Function Wind Turbine Induction Model That Incorporates Complex Inflow Conditions, *Wind Energy*, p. e2956, <https://doi.org/10.1002/we.2956>, 2024.
- Crespo, A. and Hernandez, J.: Turbulence characteristics in wind-turbine wakes, *Journal of Wind Engineering and Industrial Aerodynamics*, 61, 71–85, [https://doi.org/10.1016/0167-6105\(95\)00033-X](https://doi.org/10.1016/0167-6105(95)00033-X), 1996.
- Dar, A. S. and Porté-Agel, F.: Wind turbine wake superposition under pressure gradient, *Physics of Fluids*, 36, 015145, 725 <https://doi.org/10.1063/5.0185542>, 2024.
- DiDonato, A. R. and Jarnagin, M. P.: Integration of the General Bivariate Gaussian Distribution over an Offset Circle, *Mathematics of Computation*, 15, 375–382, <http://www.jstor.org/stable/2003026>, 1961.

- Fitch, A. C., Olson, J. B., Lundquist, J. K., Dudhia, J., Gupta, A. K., Michalakes, J., and Barstad, I.: Local and Mesoscale Impacts of Wind Farms as Parameterized in a Mesoscale NWP Model, *Monthly Weather Review*, 140, 3017 – 3038, <https://doi.org/10.1175/MWR-D-11-00352.1>, 2012.
- Gaidash, T.: Integration of exponential of a function of cosines, Mathematics Stack Exchange, <https://math.stackexchange.com/q/4760090>, URL: <https://math.stackexchange.com/q/4760090> (version: 2023-08-29), 2023.
- Gao, L., Li, B., and Hong, J.: Effect of wind veer on wind turbine power generation, *Physics of Fluids*, 33, 015 101, <https://doi.org/10.1063/5.0033826>, 2021.
- 735 Ghobrial, M., Stallard, T., Schultz, D. M., and Ouro, P.: Sensitivity of the Prediction of Wind Turbine Wakes to the Sub-Grid Scale Model, *J. Phys. Conf. Ser.*, 2767, 092 106, <https://doi.org/10.1088/1742-6596/2767/9/092106>, 2024.
- Gradshteyn, I. and Ryzhik, I.: 3–4 - Definite Integrals of Elementary Functions, in: *Table of Integrals, Series, and Products*, edited by Jeffrey, A., Zwillinger, D., Gradshteyn, I., and Ryzhik, I., pp. 247–617, Academic Press, Boston, 7 edn., ISBN 978-0-12-373637-6, <https://doi.org/10.1016/B978-0-08-047111-2.50013-3>, 2007.
- 740 Holoborodko, P.: Cubature formulas for the unit disk, <http://www.holoborodko.com/pavel/numerical-methods/numerical-integration/cubature-formulas-for-the-unit-disk/>, 2011.
- Hou, P., Hu, W., Chen, C., Soltani, M., and Chen, Z.: Optimization of offshore wind farm layout in restricted zones, *Energy*, 113, 487–496, <https://doi.org/10.1016/j.energy.2016.07.062>, 2016.
- Jensen, N.: A note on wind generator interaction, no. 2411 in *Risø-M, Risø National Laboratory*, ISBN 87-550-0971-9, 1983.
- 745 Katic, I., Højstrup, J., and Jensen, N.: A Simple Model for Cluster Efficiency, in: *EWEC'86. Proceedings. Vol. 1*, edited by Palz, W. and Sesto, E., pp. 407–410, A. Raguzzi, European Wind Energy Association Conference and Exhibition, EWEC '86 ; Conference date: 06-10-1986 Through 08-10-1986, 1987.
- Keane, A., Aguirre, P. E. O., Ferchland, H., Clive, P., and Gallacher, D.: An analytical model for a full wind turbine wake, *Journal of Physics: Conference Series*, 753, 032 039, <https://doi.org/10.1088/1742-6596/753/3/032039>, 2016.
- 750 Lanzilao, L. and Meyers, J.: A new wake-merging method for wind-farm power prediction in the presence of heterogeneous background velocity fields, *Wind Energy*, 25, 237–259, <https://doi.org/10.1002/we.2669>, 2022.
- Li, B., He, J., Ge, M., Ma, H., Du, B., Yang, H., and Liu, Y.: Study of three wake control strategies for power maximization of offshore wind farms with different layouts, *Energy Conversion and Management*, 268, 116 059, <https://doi.org/10.1016/j.enconman.2022.116059>, 2022.
- Ling, Z., Zhao, Z., Liu, Y., Liu, H., Ali, K., Liu, Y., Wen, Y., Wang, D., Li, S., and Su, C.: Multi-objective layout optimization for wind farms based on non-uniformly distributed turbulence and a new three-dimensional multiple wake model, *Renewable Energy*, 227, 120 558, <https://doi.org/10.1016/j.renene.2024.120558>, 2024.
- 755 Lissaman, P. B. S.: Energy Effectiveness of Arbitrary Arrays of Wind Turbines, *Journal of Energy*, 3, 323–328, <https://doi.org/10.2514/3.62441>, 1979.
- Maas, O. and Raasch, S.: Wake properties and power output of very large wind farms for different meteorological conditions and turbine spacings: a large-eddy simulation case study for the German Bight, *Wind Energy Science*, 7, 715–739, <https://doi.org/10.5194/wes-7-715-2022>, 2022.
- 760 Martínez-Tossas, L. A., Annoni, J., Fleming, P. A., and Churchfield, M. J.: The aerodynamics of the curled wake: a simplified model in view of flow control, *Wind Energy Science*, 4, 127–138, <https://doi.org/10.5194/wes-4-127-2019>, 2019.
- Ng, E. W. and Geller, M.: A Table of Integrals of the Error Functions, *Journal of Research of the National Bureau of Standards - B. Mathematical Sciences*, 73B, 1969.
- 765

- Niayifar, A. and Porté-Agel, F.: A new analytical model for wind farm power prediction, *Journal of Physics: Conference Series*, 625, 012 039, <https://doi.org/10.1088/1742-6596/625/1/012039>, 2015.
- Ouro, P. and Lazennec, M.: Theoretical modelling of the three-dimensional wake of vertical axis turbines, *Flow*, 1, E3, <https://doi.org/10.1017/flo.2021.4>, 2021.
- 770 Owen, D. B.: Tables for Computing Bivariate Normal Probabilities, *The Annals of Mathematical Statistics*, 27, 1075 – 1090, <https://doi.org/10.1214/aoms/1177728074>, 1956.
- Przemo: Generalized Owen's T function, *Mathematics Stack Exchange*, <https://math.stackexchange.com/q/3087504>, uRL:<https://math.stackexchange.com/q/3087504> (version: 2019-03-28), 2019.
- Qian, G.-W. and Ishihara, T.: A New Analytical Wake Model for Yawed Wind Turbines, *Energies*, 11, <https://doi.org/10.3390/en11030665>,
775 2018.
- Rosenheinrich, W.: Tables of some indefinite integral of Bessel functions of integer order, Ernst - Abbe - Hochschule Jena, 2017.
- Shapiro, C. R., Starke, G. M., and Gayme, D. F.: Turbulence and Control of Wind Farms, *Annual Review of Control, Robotics, and Autonomous Systems*, 5, 579–602, <https://doi.org/10.1146/annurev-control-070221-114032>, 2022.
- Snaiki, R. and Makki, S.: A new analytical wind turbine wake model considering the effects of coriolis force and yawed conditions, *Journal of Wind Engineering and Industrial Aerodynamics*, 250, 105 767, <https://doi.org/10.1016/j.jweia.2024.105767>, 2024.
- 780 Stallard, T., Feng, T., and Stansby, P.: Experimental study of the mean wake of a tidal stream rotor in a shallow turbulent flow, *Journal of Fluids and Structures*, 54, 235–246, <https://doi.org/10.1016/j.jfluidstructs.2014.10.017>, 2015.
- Stanley, A. P. J. and Ning, A.: Massive simplification of the wind farm layout optimization problem, *Wind Energy Science*, 4, 663–676, <https://doi.org/10.5194/wes-4-663-2019>, 2019.
- 785 Stipa, S., Ajay, A., Allaerts, D., and Brinkerhoff, J.: The multi-scale coupled model: a new framework capturing wind farm–atmosphere interaction and global blockage effects, *Wind Energy Science*, 9, 1123–1152, <https://doi.org/10.5194/wes-9-1123-2024>, 2024.
- Veers, P., Bottasso, C. L., Manuel, L., Naughton, J., Pao, L., Paquette, J., Robertson, A., Robinson, M., Ananthan, S., Barlas, T., Bianchini, A., Bredmose, H., Horcas, S. G., Keller, J., Madsen, H. A., Manwell, J., Moriarty, P., Nolet, S., and Rinker, J.: Grand challenges in the design, manufacture, and operation of future wind turbine systems, *Wind Energy Science*, 8, 1071–1131, <https://doi.org/10.5194/wes-8-1071-2023>, 2023.
- 790 Voutsinas, S., Rados, K., and Zervos, A.: On the Analysis of Wake Effects in Wind Parks, *Wind Engineering*, 14, 204–219, <http://www.jstor.org/stable/43749429>, 1990.
- Walter, K., Weiss, C. C., Swift, A. H. P., Chapman, J., and Kelley, N. D.: Speed and Direction Shear in the Stable Nocturnal Boundary Layer, *Journal of Solar Energy Engineering*, 131, 011 013, <https://doi.org/10.1115/1.3035818>, 2009.
- 795 Zhang, Z., Huang, P., and Sun, H.: A Novel Analytical Wake Model with a Cosine-Shaped Velocity Deficit, *Energies*, 13, <https://doi.org/10.3390/en13133353>, 2020.
- Zhang, Z., Huang, P., Bitsuamlak, G., and Cao, S.: Analytical solutions for yawed wind-turbine wakes with application to wind-farm power optimization by active yaw control, *Ocean Engineering*, 304, 117 691, <https://doi.org/10.1016/j.oceaneng.2024.117691>, 2024.
- Zong, H. and Porté-Agel, F.: Experimental investigation and analytical modelling of active yaw control for wind farm power optimization,
800 *Renewable Energy*, 170, 1228–1244, <https://doi.org/10.1016/j.renene.2021.02.059>, 2021.