



Leveraging Signal Processing and Machine Learning for Automated Fault Detection in Wind Turbine Drivetrains

Faras Jamil^{1,2}, Cédric Peeters¹, Timothy Verstraeten^{1,2}, and Jan Helsen¹

¹Acoustics & Vibration Research Group / OWI-Lab, Vrije Universiteit Brussel

²Artificial Intelligence Lab, Vrije Universiteit Brussel

Correspondence: Faras Jamil (faras.jamil@vub.be)

Abstract. Wind energy is considered a sustainable renewable energy source; however, it faces the challenge of significant operating and maintenance costs. The research proposes a hybrid fault detection method to combine the physical domain knowledge with the machine learning models to provide an overview of the health of wind turbine drivetrain components. Signal processing indicators are computed from raw vibration signals measured from strategically placed accelerometers over drivetrain components. It produces an immense number of indicators as each indicator is sensitive towards certain types of faults, and manual monitoring becomes an unfeasible task. The machine learning models are trained using signal processing indicators and SCADA data. The normal behaviour modelling technique is employed to learn the healthy operation of the machine from data collected during healthy machine operation. The trained normal behaviour machine learning models label each indicator in a healthy or faulty state over time. The labelled state-of-the-art signal processing indicators are fused to provide a high-level health status overview of wind turbine drivetrain components. It helps to derive the required details from many condition indicators, which is valuable when managing multiple components in a single wind turbine across an entire wind farm. The proposed hybrid fault detection method is validated on an offshore wind farm with multiple years of condition monitoring data. It provides a high-level health overview that is readily understandable for non-expert wind farm operators, and for more detailed fault analysis, experts can conduct a comprehensive inspection.

1 Introduction

Renewable energy has experienced significant growth in recent years and has reduced the impact of global warming. In 2022, international investments in the renewable energy sector reached USD 1.3 trillion to decarbonise fossil-fuel-based energy production (IRENA, 2023). The growing interest in renewable energy has led to a substantial increase in clean, green energy production. The global installed wind energy capacity escalated to 906 GW due to the fast growth observed during recent years (Hutchinson and Zhao, 2023). The increasing interest in renewable and wind energy is accompanied by the challenge of significant operating and maintenance (O&M) costs. In the case of offshore wind, the O&M cost accounts for 30% of the total energy cost, primarily due to the remote and challenging environmental conditions of offshore locations. Offshore wind energy sites are advantageous for wind energy due to the availability of more consistent and strong winds to harvest (Gao and Odgaard, 2023). This situation offers ample opportunities for cost reduction in offshore wind energy by identifying faults at early stages to plan



25 efficient group maintenance strategies by combining multiple wind turbines or components Wang et al. (2022b). It is crucial to accurately determine the health status of wind turbines to plan efficient maintenance strategies during low energy demand and suitable weather conditions to reduce the O&M cost Helsen et al. (2017).

The advancement of Industry 4.0 introduced Internet of Things (IoT) devices, facilitating the transfer of sensor data over the Internet Ma et al. (2022). The wind industry utilised this opportunity and equipped wind turbines with various IoT sensors to gather a wide range of data Verstraeten et al. (2019a). Moreover, the drive to automate every conceivable industrial process has made the mechanical industry increasingly intricate, owing to the complex interrelations between numerous complicated components and procedures. Wind turbines are complex machines because they operate under constantly evolving operating conditions in challenging weather and environmental settings. The non-stationary conditions of wind turbines pose significant challenges to fault detection Liu et al. (2023). As a result, there is a growing need for more advanced maintenance strategies to effectively manage and uphold wind turbine performance Zonta et al. (2020). The big data collected from multiple IoT sensors enables continuous health monitoring of wind turbines. It transforms the maintenance strategies from periodic or reactive to predictive Nejad et al. (2022). Currently, predictive maintenance is the most optimal maintenance strategy, which allows planning future group maintenance by identifying faults at the initial stage, leveraging the continuous data measurements provided by IoT sensors. Predictive maintenance methods involve training machine learning models using historical data from IoT sensors to predict the current health state of a wind turbine. It provides insight to execute group maintenance or arrange necessary measures to extend the wind turbine's operational life Zhang et al. (2019); Carvalho et al. (2019). The life of a wind turbine affected by an early-stage fault can be increased by only utilising it during high demand Verstraeten et al. (2019b). The wind energy O&M cost reduces when reliability is improved and wind turbines are available to produce energy in line with demand Clark and DuPont (2018).

45 The IoT sensors installed on wind turbines have the capacity to measure various types of data, primarily used for vibration analysis, acoustics, oil analysis, strain measurement, and thermography. Supervisory Control and Data Acquisition (SCADA) is a widely used data acquisition and monitoring system for wind turbines. It collects various types of data, including wind speed, power output, and rotor speed, which are essential for assessing the operating condition of the wind turbine. The measured data is used to monitor components such as gearboxes, generators, main bearings, blades, and towers García Márquez et al. (2012). Among these techniques, vibration analysis has emerged as a primary method for condition monitoring Nejad et al. (2022); Helsen et al. (2017); Peeters et al. (2019a). However, raw data is not sufficient to provide insights to develop effective predictive maintenance strategies. Signal processing indicators derived from raw vibration data are used to monitor the health status of wind turbines. Experts are required to monitor individual indicators to identify emerging fault trends. Numerous signal processing methods are used to compute such indicators, with each one sensitive to specific types of faults. Therefore, it is unfeasible for experts to continuously monitor each indicator, especially when a wind farm has multiple wind turbines, and each wind turbine contains many components. Machine learning models can provide a high-level health status Jamil et al. (2023b, a), or label the indicators with healthy and alarm states for easy interpretation Peeters et al. (2019b).

The signal processing indicators for fault detection are categorized into two groups: time domain and frequency domain indicators. Time domain indicators, such as mean and standard deviation, are statistical parameters that enable the determi-



60 nation of health degradation trends by monitoring deviations from established normal behaviour. These time domain features
include statistical parameters such as root mean square, kurtosis, peak-to-peak, Moors kurtosis, peak energy index, and crest
factor Peeters et al. (2017, 2018a, 2019b). Time domain indicators significantly simplify health analysis since they do not re-
quire knowledge of the characteristic frequencies of components. Nonetheless, these indicators only indicate which sensor has
65 detect faults but also specify which component is experiencing the fault by utilizing characteristic frequencies associated with
those components. Bearing characteristic frequencies are the inner race, outer race, roller cage, and roller, while gears have
distinct characteristic frequencies associated with gear meshing. These characteristic frequencies are tracked in the spectral do-
main of the signal and its envelope HO and RANDALL (2000); McCormick and Nandi (1998). Fault detection methods based
on cyclostationarity are gaining popularity in rotating machinery fault detection applications Antoni (2009). These methods
70 highlight the modulation in signals introduced by faults in rotating components.

There is a rising interest among the research community in employing machine learning models for fault detection Liu et al.
(2018); Xiang et al. (2022). The most commonly used machine learning models include artificial neural networks Marugán
et al. (2018), support vector machines Vidal et al. (2018); Widodo and Yang (2007), and deep neural networks Dibaj et al.
(2023); Jia et al. (2016); Ibrahim et al. (2016). These machine learning applications are implemented by leveraging signal
75 processing features as they depict substantial fault trends Peeters et al. (2019b); Jamil et al. (2023b, a); Perez-Sanjines et al.
(2023). However, a primary challenge for machine learning models is the scarcity of fault cases, as machines typically operate
in a healthy state for the majority of their operational time. Therefore, training a classifier to distinguish between normal
and faulty health states may not be an optimal technique. Transfer learning provides a viable solution to address the issue of
limited data availability in the machine learning discipline. It enables the transfer of data or knowledge from similar domains
80 to enhance the prediction performance of machine learning models Zhuang et al. (2021). In the context of fault detection,
transfer learning enhances detection capabilities by transferring learned knowledge from a similar source domain to a target
domain Bai et al. (2021), while avoiding negative transfer Jamil et al. (2022). However, transfer learning does require a few
known faulty cases to improve supervised learning fault detection models. It implies that in order to deploy a fault detection
model in industry, a wind turbine must experience a failure event that provides the necessary data to train a fault detection
85 classifier. The acquisition of fault data for machines poses a significant challenge, as it requires the occurrence of faults before
training a robust health status classifier to differentiate between healthy and faulty states. However, healthy data is available
to measure after the machine begins operations. A more practical approach in such cases involves employing a machine
learning model capable of learning healthy behaviour and detecting faults by identifying deviations from the learned normal
behaviour. The Normal Behavior Model (NBM) is trained on the expected behaviour and identifies deviations as anomalies.
90 This approach allows for the utilisation of healthy wind turbine data to train NBMs, and detect a potential fault when any
deviation from the expected behavior is observed. Peeters et al. (2019b); Helsen et al. (2018); Wang et al. (2022a). Peeters
et al. (2019b) has introduced a hybrid fault detection method that leverages signal processing statistical indicators computed
during a healthy operating period to train an NBM. The trained NBM is able to label indicators' healthy states and any possible
deviations as a faulty trend. Temperature signals are less sensitive as compared to the vibration signals towards any fault



95 introduction, however, they do exhibit trends that can indicate fault trends. NBMs trained on healthy temperature signals are
able to successfully detect gearbox faults in wind turbines Helsen et al. (2015, 2018). Chesterman et al. (2022) compares
statistical and machine learning NBM pipelines to detect wind turbine generating bearing fault using SCADA data. Perez-
Sanjines et al. (2023) employed coherence maps derived from vibrational signals to train normal behaviour deep learning
models to detect mechanical faults in wind turbine rotating components. Normal behaviour modelling is the most effective
100 machine learning approach for mechanical condition monitoring and failure prediction, as concluded from a comparison of
various SCADA data-based condition monitoring techniques Chesterman et al. (2023). The key advantages of Normal Behavior
Modeling (NBM) include its ability to perform unsupervised learning and detect failures without prior exposure to them. NBM
can be easily adapted to various types of data from any component or process by learning normality and triggering an alarm
when the normality is violated.

105 The proposed method is a hybrid fault detection approach to provide a high-level health status summary by adapting to
changing operating conditions by using vibration and SCADA data. It combines the computational capabilities of machine
learning with domain knowledge of signal-processing indicators. This method leverages domain knowledge to train machine
learning models, providing results that are both easily interpretable and explainable, compared to black-box machine learning
models only predicting the presence of faults. The effectiveness of the proposed method has been validated across multiple
110 real-life wind farms, spanning several years of operational data. It has demonstrated a notable capability to detect fault trends
at their early stages. The key contributions of this research can be summarised as follows:

- Development of a fully automated vibration and SCADA data-based drivetrain monitoring pipeline.
- The method introduces physical domain knowledge to enhance machine learning models' prediction performance.
- It provides a high-level health status overview by adapting to changing operating conditions.
- 115 – It has been validated on many real-world wind farms, leveraging over multiple years of data, and exhibited promising
results.

2 Hybrid condition monitoring fault detection method

The proposed approach is a hybrid condition monitoring method for fault detection. This method integrates vibration-based
signal processing indicators and SCADA data with machine learning models. Although SCADA data has not been designed
120 primarily for wind turbine condition monitoring Tautz-Weinert and Watson (2017), the proposed method derives operational
information about the wind turbine from this data. A range of signal processing techniques are employed to compute indicators
from vibration signals, including time-domain statistical indicators, frequency-domain spectral features, and cyclostationary
indicators. These computed indicators serve as the input for machine learning NBMs trained to classify the indicators into
healthy or faulty states. Subsequently, the approach calculates the count of indicators labelled as faulty at each time step
125 to provide a high-level overview of the wind turbine's health. Figure 1 offers a visual representation of the hybrid condition
monitoring pipeline, which commences with data acquisition from sensors installed on the wind turbine drivetrain. The primary

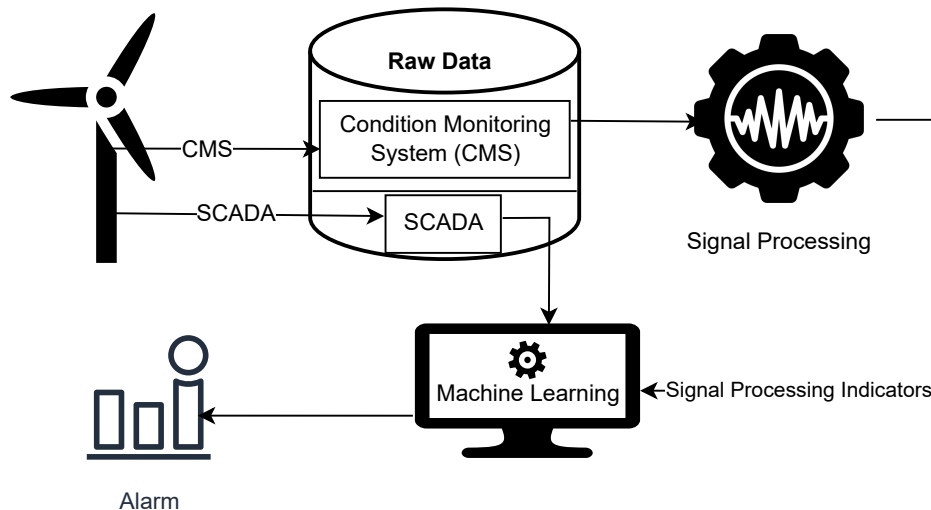


Figure 1. The hybrid condition monitoring pipeline commences with data acquisition from a wind turbine. This data is then used to compute signal processing features, which are subsequently passed as input into machine learning models alongside SCADA data to predict alarms.

data source is measured vibration signal to compute various signal processing indicators. These indicators are then submitted to the machine learning NBMs for classification into healthy and faulty states. Finally, in the last stage, alarms are triggered based on the number of indicators classified as faulty per timestamp.

130 The proposed hybrid condition monitoring pipeline is structured into three distinct steps:

- Computation of signal processing time-domain and frequency-domain condition indicators
- Labelling computed indicators into healthy and faulty states using normal behaviour machine learning models
- Alarming to provide a high-level health status of the wind turbine

2.1 Signal processing

135 The condition indicators that are fed to the normal behaviour models are the result of an extensive signal pre-processing phase that tries to track any significant changes in the measurements. The following paragraphs detail the different steps required to arrive at a set of meaningful and effective set of condition indicators for fault detection.

140 Due to the non-stationary nature of wind turbine drivetrains, the measured vibration signals cannot be fully analyzed directly without knowledge of the rotating speed or instantaneous angular speed (IAS) of the drivetrain shafts. Given that not every turbine has a high-resolution angle encoder installed on its drivetrain, the first step in the signal processing pipeline is the automated estimation of the IAS directly from the vibration signals. To achieve this automated estimation, knowledge of the kinematic orders present in the gearbox is necessary, i.e. the gear ratios. Using these kinematic orders, we can employ the



145 harmonic frequencies that each gear produces as input for the multi-order probabilistic approach (MOPA) Leclère et al. (2016)
to obtain a first rough speed estimate. The benefit of MOPA is its ease of use as well as its ability to deal with strong speed
variations without the need for fine-tuning a band-pass filter. Once the initial speed estimate is obtained, this estimate is refined
through the multi-harmonic demodulation (MHD) method which does need an initial rough speed estimate in order to work
properly Peeters et al. (2022). However, MHD does typically produce much more accurate speed estimates that are on par
with a physical angle encoder. Afterwards, the estimated speed needs to pass a quality check to ensure it actually improves the
150 ensuing processing steps and will lead to meaningful condition indicators.

Once the instantaneous angular speed is known, the data is angularly resampled and can then be used for further data cleaning
steps. Typically, the data is separated into deterministic and stochastic signal content since gears and bearings are considered to
primarily produce only one of these two distinct signal characterizations. Common methods to achieve this separation are cep-
155 strum editing Peeters et al. (2018b, 2017), Discrete/Random Separation Peeters et al. (2020), Linear Prediction Coding Antoni
and Randall (2004), Self-Adaptive Noise Cancellation Ho (1999), and Phase Editing Barbini et al. (2017). This approach does
give rise to a tripling of the signals to use for condition indicator calculation as there is now the raw signal, and the deterministic
and stochastic signals. Another commonly employed pre-processing technique is the usage of a filterbank Antoni (2021). Band-
pass filtering the signal prior to indicator calculation increases the sensitivity of the computed statistics to frequency-localized
160 phenomena. Since a fault might be amplified by the transfer path from the source to the receiving sensor, resonances can play
an important role in the detection through statistics of the fault Randall (2021). Hence adding frequency-dependency to the
condition indicator calculation can greatly enhance the efficacy with which a pipeline is capable of early fault detection. One
of the most popular examples of this aspect is the Kurtogram Antoni (2007), which employs a binary-ternary filterbank to track
the kurtosis of different frequency bands. Similar filterbank structures can also be used for other statistics than kurtosis Peeters
165 et al. (2019c).

After speed estimation and data cleaning, the final signal processing step is to compute condition indicators on the pre-
processed data. For complex machinery, there are usually a lot of potential components that can fail, meaning that a very
targeted approach is often not possible due to a lack of historical insights. Therefore, the most common approach is to cal-
170 culate a wide array of indicators that look at all potential changes in a signal, be it in the time or the frequency domain. In
the time domain, several statistics are calculated on all the pre-processed signals, i.e. the signals after deterministic/stochastic
separation and filtering. Most of these indicators are common vibration analysis condition indicators such as RMS, kurtosis,
crest factor, negentropy, etc. These indicator types can generally be characterized as quantifying either the Gaussianity or the
stationarity of a signal Antoni and Borghesani (2019); Kestel et al. (2023). In the frequency domain the condition indicators
175 are linked to the characteristic frequencies linked to the kinematics of the drivetrain. The harmonics produced by the gears
and shafts are tracked in both the autopower spectra and the envelope spectra to check for increases in first- and second-order
cyclostationarity that could be related to degradation Napolitano (2016). Also, the sidebands that surround the fundamental
harmonics are tracked as they are often a useful indicator for degradation in case of gear wear Zhang et al. (2021). Due to



the pre-processing and the computation of many different features, the total number of condition indicators typically ends up
180 being in the hundreds or even thousands for a single sensor. Multiply that number by the number of sensors and machines and
it becomes clear that manual investigation of each indicator trend very quickly becomes completely unfeasible for a human.
The difficulty however is dealing with these indicators in an automated manner that allows for early fault detection while
also avoiding too many alarms or false positives which would again increase the manual investigation work required. The next
sections detail the proposed approach to handle such large sets of condition indicators in a reliable manner on a fleet-wide level.

185

2.2 Normal Behavior Models

Normal behaviour or anomaly detection models are specialized in identifying data observations that deviate from the estab-
lished pattern of normal behaviour. NBMs are used in applications to identify abnormalities or outliers, such as fault detection,
fraud detection, intrusion detection, and medical diagnosis Chandola et al. (2009). It is crucial to define the normal behaviour
190 of the model to effectively detect anomalies. If the model is trained on data containing abnormalities, it may face difficulty
identifying anomalies. The proposed method relies on utilising exclusively healthy data, ensuring that it does not incorporate

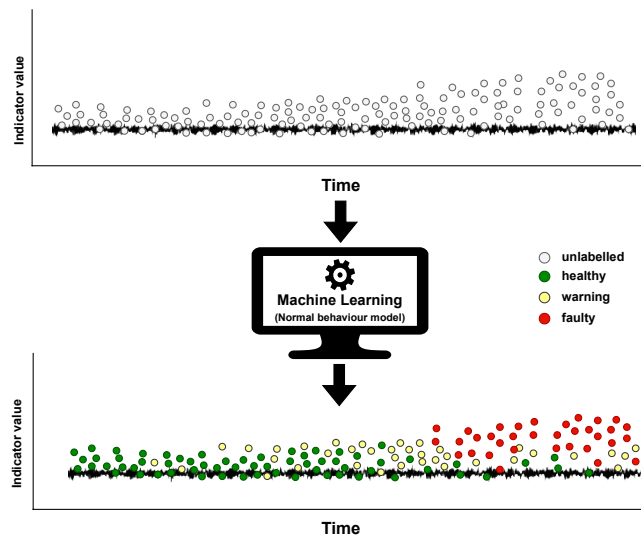


Figure 2. The normal behaviour machine learning models label the unlabelled indicators to healthy (green), warning (yellow), and faulty (red) states.

faulty observations to detect mechanical faults.

The NBMs are trained using historical healthy data collected from sensors installed on wind turbine components. The pro-
posed hybrid approach uses vibrational signals and SCADA data. Figure 2 illustrates that the trained NBMs take the unlabeled
195 indicator as input and label them with healthy, warning, and faulty states at each timestamp. The condition indicators are

derived from the vibration signal, while SCADA data is used together with the condition indicators for machine learning models. The NBMs learn the normal behaviour of wind turbine components from the healthy data, and faults are detected when the model predictions observe deviations from the learned normal behaviour. The wind turbine operates in complex weather and environmental conditions, which presents a greater challenge for fault detection methods due to varying wind speeds and changing operating conditions. A model trained on observations from a low wind speed operating regime could misclassify an observation as a fault when applied to observations from a high wind speed operating regime. The proposed method addresses this issue by incorporating a step to ensure operating condition independence, to mitigate the influence of varying operating regimes. K-means clustering is used to segment the measured data into distinct operating regimes using wind turbine operational data. The operating parameters from the SCADA data, such as active power and rotation speed are utilised to define these operating regime clusters. Before NBM predicts the health status of the associated indicator, the K-means clustering model, trained on the operating parameters of healthy data, assigns each observed data point to a corresponding operating regime. An individual NBM is trained for each indicator per operating regime. The objective of a machine learning model is to predict the value of a condition indicator based on the SCADA operating parameters. The model is trained on healthy data to predict indicator values reflecting normal behaviour based on the input SCADA operating parameters. A fault introduces changes in the vibration signal, causing deviations from the expected normal behaviour. As a result, the trained model can identify faults by comparing the difference between the predicted indicator value, based on the SCADA operating parameters, and the actual measured value. The active power and rotation speed are SCADA operating parameters which serve as the input features for the machine learning model to predict the expected value of a specific signal processing indicator target variable. A Bayesian

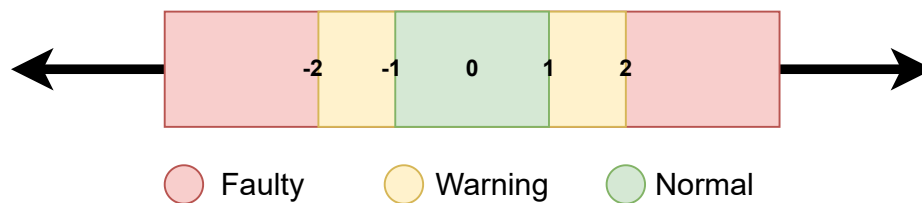


Figure 3. Measurement is considered 'healthy' when the difference between the measured and predicted indicator values falls within the range of -1 to 1. If the deviation exceeds 1 but remains under 2, it is labelled as a 'warning.' Deviations exceeding 2 are classified as 'faulty' states.

ridge regression model is used for NBM, which is a Bayesian approach to linear regression with ridge (L2) regularization. It leverages probability distributions for the regression coefficients to estimate the model parameters and quantify uncertainty in predictions. This probabilistic framework is valuable for robust modelling and assessing the level of uncertainty associated with the model's coefficient estimates and predictions. Equation 1 represents the Bayesian ridge regression model:

$$Y = \beta_0 + \beta_1 X_1 + \beta_2 X_2 + \epsilon \quad (1)$$

In this equation, Y represents the condition indicator, the variable to be predicted. X_1 and X_2 correspond to the SCADA operational parameters as active power and rotation speed are the input variables or features of the model. The coefficients



β_0 , β_1 , and β_2 are model parameters, with β_0 denoting the intercept term. In Bayesian Ridge Regression, these coefficients are considered as random variables, enabling probabilistic modelling. The term ϵ represents the error term, accounting for data variability and noise. The NBM trained on healthy data, predicts the indicator value corresponding to a healthy machine behaviour based on the provided SCADA operational parameters. The machine's health status, specific to a particular indicator
225 in the respective operating regime, is determined by computing the difference between the actual and predicted indicator values using the two-sigma rule, as illustrated in Figure 3. If the measured indicator value deviates by two standard deviations from the NBM's predicted value, it is classified as a faulty state. A deviation between one and two standard deviations is labelled as a warning state, while a deviation less than one standard deviation is categorized as a healthy state.

2.3 Alarming

230 While the individual labelled indicator trends are easy to interpret, observing a large number of indicator trends is challenging and quickly becomes entirely unfeasible for a large number of machines and sensors. The proposed method incorporates an alarming step to aggregate multiple indicators into a single high-level indicator. It provides a comprehensive global health status overview of wind turbine components, eliminating the need to inspect individual indicators separately. The high-level

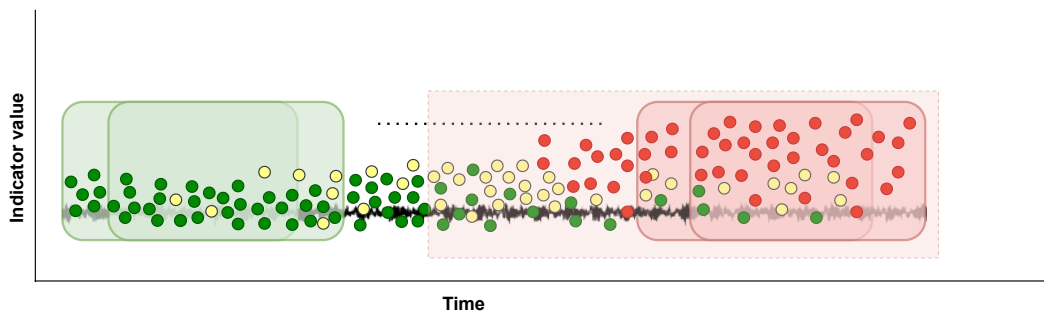


Figure 4. The sliding window over a single indicators time series to identify continuous faulty intervals based on labelled as a warning and healthy measurements determined by the NBM.

indicator is generated by applying a sliding window across the entire time series of each indicator to identify healthy, warning,
235 and faulty intervals, as illustrated in the Figure 4. A faulty interval represents consecutive detected faulty windows. A sliding window spanning 60 days is utilized, as measurements are taken at intervals of ten seconds approximately every two or three days. Each measurement is assigned a value of 0, 0.5, or 1, corresponding to healthy, warning, or faulty predicted states by NBM, respectively. The status of each window is determined as healthy or faulty by counting the number of warning and faulty measurements based on these assigned values. The mean of the assigned values is calculated, and if the mean is equal to or
240 greater than 0.3, the window is labelled as faulty. To eliminate outliers, any faulty interval shorter than one month is excluded.

As shown in the Figure 5, the high-level indicator is an aggregation of all indicators computed from a single sensor's vibration signal, providing a high-level health status overview of the components on which it is installed. This high-level indicator depicts the indicators observing faulty intervals. The high-level health indicator is derived by adding the number of indicators

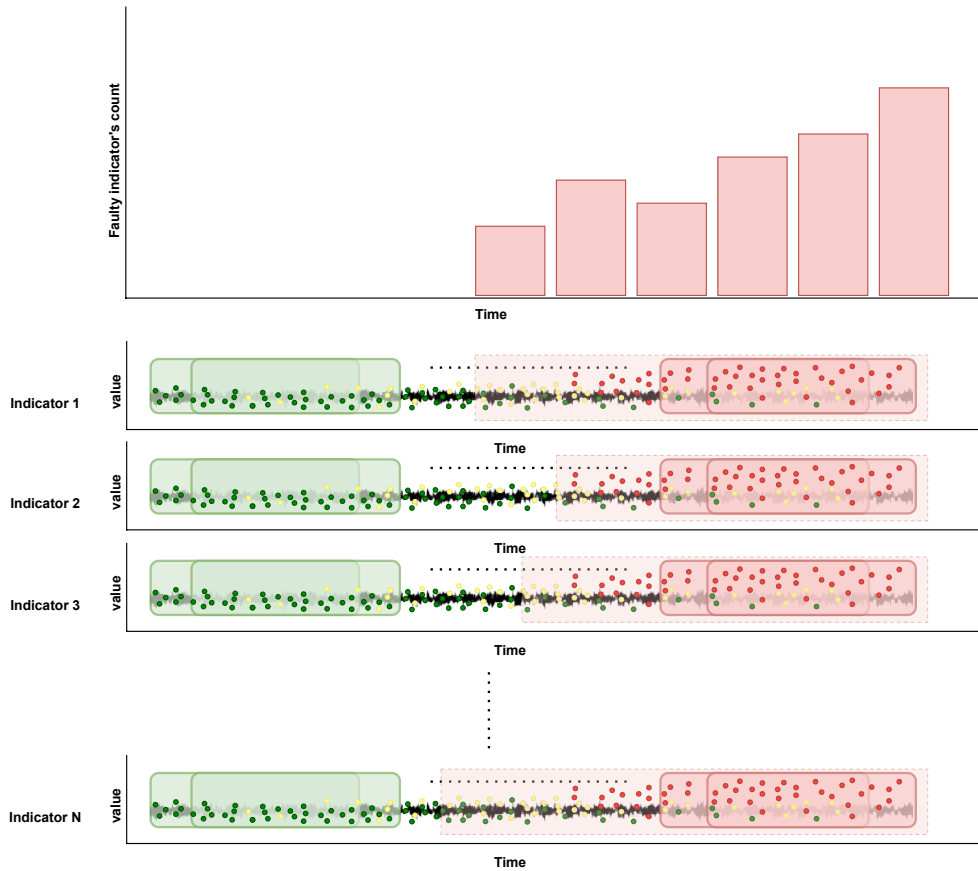


Figure 5. The high-level health indicator is derived by combining data from various indicators computed from a single sensor's raw vibration signal. It provides the idea about the number of indicators detecting fault trends at a timestamp.

245 having a labelled faulty interval during a month. The high-level indicator is visually represented as a bar plot, showcasing the number of signal processing indicators that are observing faults during one month. Early-stage faults are initially detected by a limited set of signal-processing indicators. As the fault's severity progresses more indicators start observing the fault trend. Furthermore, our proposed method allows experts to examine individual indicators tracking fault trends, facilitating a more detailed examination of the identified faults.

3 Experiments

250 The proposed method is validated on a wind farm comprising more than 50 wind turbines. For the analysis, data is collected at a sampling frequency of 20 kHz using strategically positioned accelerometers on the wind turbine drivetrain components. This data collection process involves measuring data for ten seconds (10s) during a single measurement every two to three days over several years. Consequently, an approximate total of 150 measurements are obtained each year. From these individual

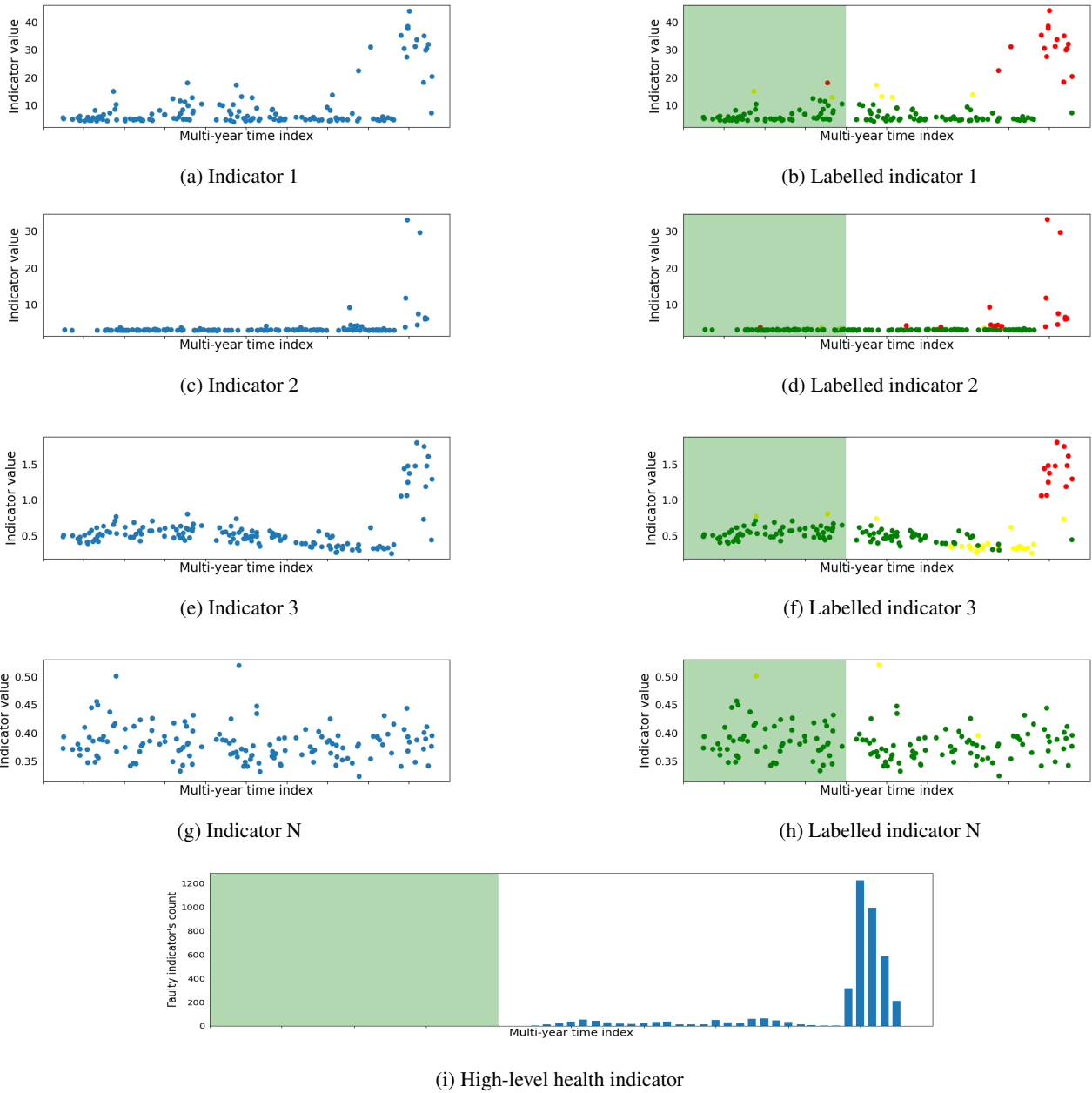


Figure 6. A planetary stage channel fault is detected by multiple low-level signal processing indicators and then also depicted in the high-level health indicator. The fault is later confirmed in a comprehensive borescope inspection.

raw vibration signal measurements, multiple signal processing statistical and frequency domain indicators are derived. The signal processing indicators are computed from the raw vibration data obtained by a single sensor. The variability in wind



speeds and its influence on the wind turbine's operating conditions, the data is segmented into four distinct operating regimes before the NBM training phase. A distinct NBM is trained for each computed indicator per operating condition to label the indicators with healthy, warning, or faulty state at each timestamp. Approximately one year of healthy data is used to train the NBMs, ultimately enabling the ability to track indicator's fault detection trends over multiple years. The labelled indicators are combined into a single high-level health indicator for each sensor located on a specific wind turbine drivetrain component at a particular position. The detected faults by the proposed method are subsequently confirmed via manual borescope inspections conducted by engineers on the drivetrain components.

4 Results

The proposed method is validated on an entire offshore wind farm. Due to confidentiality constraints, specific information about the wind farm or individual wind turbines cannot be disclosed. Consequently, plots have been generated with anonymized axes to showcase the results while preserving the confidentiality of the sensitive information. However, for the purpose of the result demonstration, a detailed analysis of four specific cases is presented in this result section. These cases include three instances of fault detection at different wind turbine life stages and one where the wind turbine remains consistently healthy throughout the observation period. The result section elaborates on these diverse fault cases associated with different wind turbine drivetrain components to offer a comprehensive illustration of the proposed method's ability to detect faults within rotating components of the drivetrain. Figure 6, Figure 7, and Figure 8 depict the faulty scenarios, while Figure 9 illustrates a healthy case. These visual representations showcase the results obtained at three distinct stages of the proposed method. Each figure demonstrates the proposed method output at three different stages, including the derived signal processing indicators, the machine-learning labelled indicators categorized as healthy, warning, and faulty, as well as a high-level health status overview illustrating the counts of faulty indicators. The x-axis represents the time of observation spanning multiple years, while the y-axis displays the values of indicators in both labelled and unlabeled plots. Additionally, the signal processing labelled indicators, determined by the machine learning NBMs, indicate the health status of the indicator at a specific timestamp. It is denoted by green, yellow, and red colours for healthy, warning, and faulty states, respectively. In the high-level health indicator plot, the y-axis represents the count of indicators observing fault trends. The green shaded area on the labelled and high-level health indicator plots represents the training healthy period for NBMs. Although the green area spans over two years in the figure, it's important to note that a substantial number of measurements are missing during the initial year. Consequently, the actual healthy data measurements are approximately equal to one year.

The planetary stage channel fault is depicted in Figure 6. It is challenging for signal processing indicators to detect early-stage planetary stage channel faults. Therefore, a notable impulsive increase in the number of indicators observing faults is observed instead of a gradual growth in indicators fault trends. The manual inspection revealed indentations on the planet gear and ring gear teeth. Additionally, standstill mark damages are observed on the rollers of the planet gear bearing. Figure 7 illustrates a generator channel fault, observing a gradual increment in the number of indicators detecting fault trends in proportion to the fault's intensity. In the early stages of the fault, only a handful of indicators observe the fault, but as the fault progresses, an



Figure 7. A generator channel fault is detected by multiple low-level signal processing indicators and then also depicted in the high-level health indicator. The fault is later confirmed in a comprehensive borescope inspection.

290 increasing number of indicators begin to depict fault trends. Notably, the early detection of the generator channel fault, along with the incremental rise in the number of indicators observing faults over time, allows wind farm operators more time for

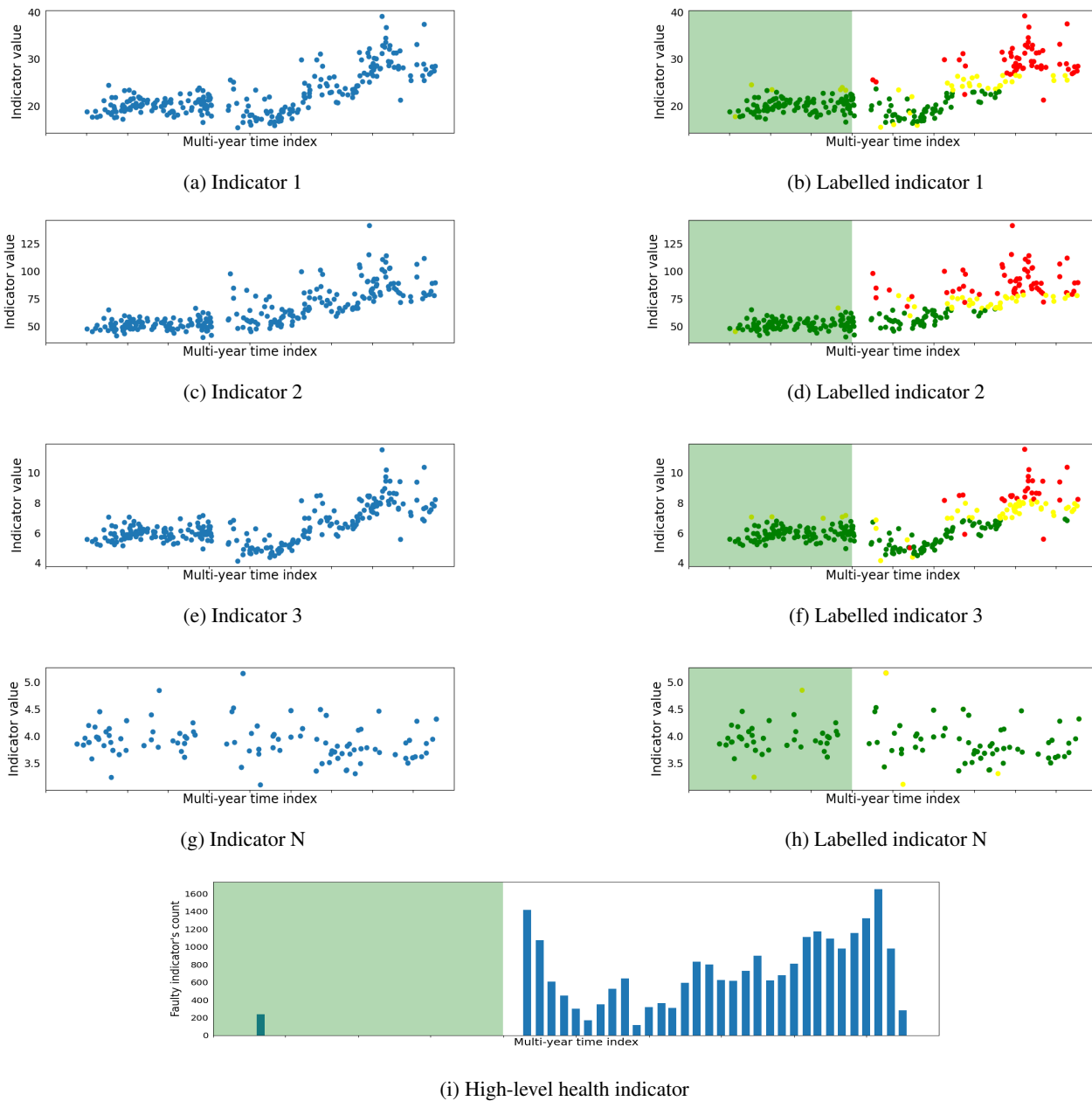


Figure 8. A high-speed stage channel fault is detected by multiple low-level signal processing indicators and then also depicted in the high-level health indicator. The fault is later confirmed in a comprehensive borescope inspection.

maintenance planning, as compared to the immediate surge in indicators observed for the planetary stage channel fault. The high-speed stage (HSS) channel fault case is shown in Figure 8, where a significant number of indicators commenced detecting

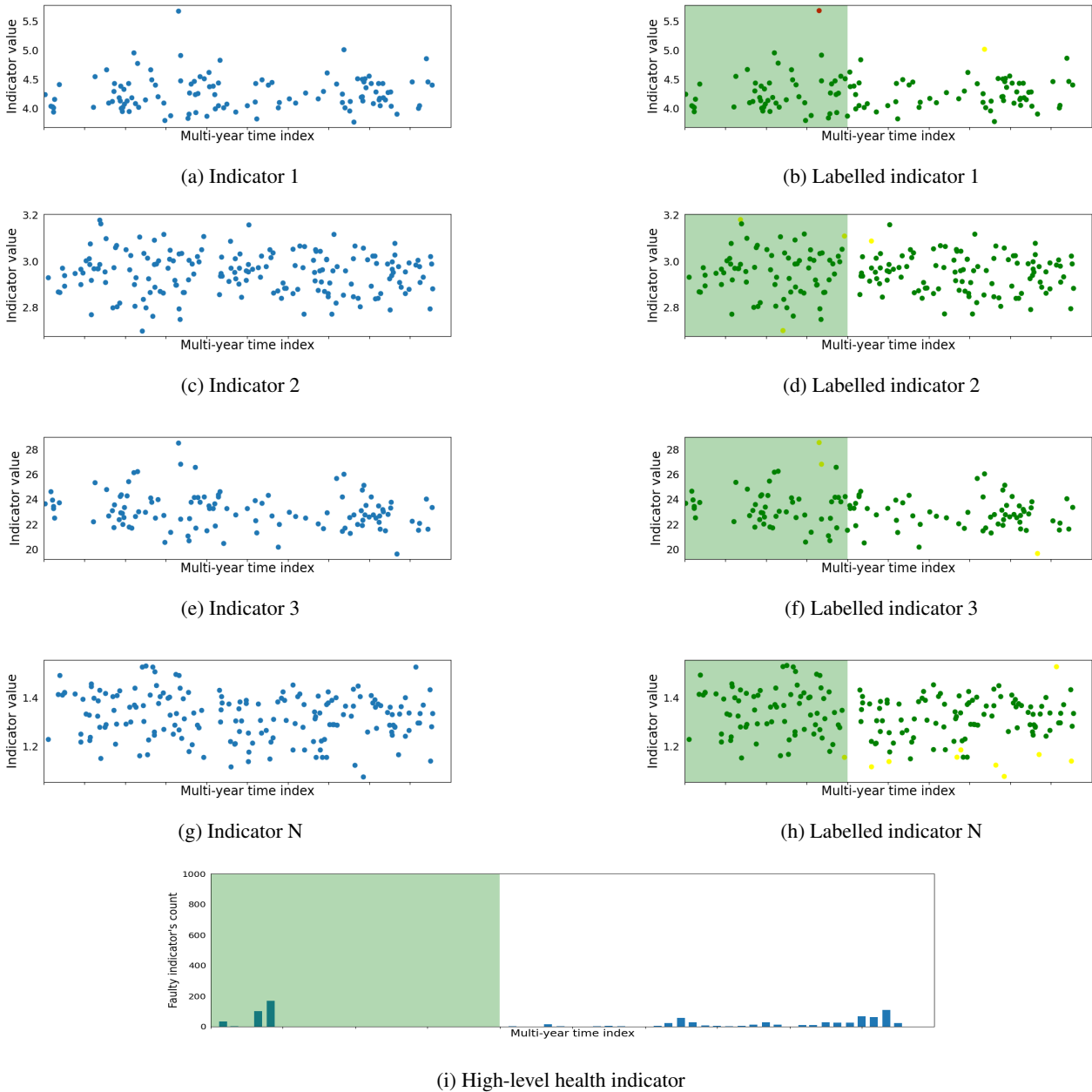


Figure 9. A planetary stage channel healthy case depicted a healthy state throughout the observed time period.

295 fault trends at the early stage of the fault. This early response signals the introduction of a fault, which engineers confirm through manual inspection, which revealed abrasive wear on the roller flange of the generator-side HSS bearing. In contrast to faulty cases, the case of a healthy planetary stage channel is depicted in Figure 9. The signal processing indicators do not



detect any significant fault trends. However, a few indicators exhibit minor fault observations during the typical run-in period when the moving mechanical components are still settling. Furthermore, a minimal fault trend is observed towards the end, but it lacks significance compared to the faulty cases. The healthy case is also verified through a manual inspection, where all bearings and gears exhibit no signs of wear or damage and are found in good condition.

300 5 Discussion

The proposed hybrid method combines physics-based signal processing indicators with machine learning techniques to detect faults in wind turbine drivetrains. The labelled signal processing indicators, which include healthy, warning, and faulty states, can be easily analysed without expert knowledge. Furthermore, the high-level health status provides an overview of wind turbine components' health without requiring the inspection of individual condition indicator trends. This proposed method
305 can serve both engineering experts and non-expert operators, offering them a health status overview tailored to their needs. A non-expert operator can gain a high-level understanding of the fleet's health to plan upcoming maintenance campaigns, while an expert can obtain a more detailed overview to understand the nature of the fault and determine the specific maintenance requirements for a particular component. The method has been validated across the entire wind farm drivetrain components, with borescope inspections confirming the results. For demonstration purposes, we discuss four cases in this study, where
310 data has been observed over multiple years. One year of healthy data is used to train the NBMs in the training phase. The drivetrain components observe the faults at different stages of their lifecycle. Early fault detection of the planetary stage gears and bearings is often particularly challenging and typically leads only to minor increases in condition indicator trends which are difficult to detect manually. The proposed hybrid pipeline accurately tracks the degradation of the planet gear, ring gear teeth, and planet gear bearings rollers faults through the high-level alarm trend. In the remaining two cases, the generator and
315 HSS channel faults are identified at an early stage, and an increasing trend is observed in the high-level indicator. The fault trends observed by the proposed hybrid method are confirmed after monitoring the abrasive wear on the roller flange of the generator-side HSS bearing. In contrast, the planetary stage in the healthy case remains fault-free throughout the observing period, and the inspection confirms no wear and damage on the bearings and gears.

The proposed hybrid method effectively provides a comprehensive assessment of the turbine's health, encompassing both
320 a high-level overview and detailed insights into individual condition indicators for each installed accelerometer. However, the training process demands substantial computational resources due to the requirement of individually training an NBM for each condition indicator. Future work aims to address this challenge by developing an explainable machine learning model that can adapt to all condition indicators simultaneously while providing both a holistic evaluation of the turbine's health and an in-depth analysis of individual condition indicator fault trends. It will significantly mitigate the computational burden. The
325 multitude of condition indicators employed in this approach plays a critical role, as each indicator demonstrates sensitivity to distinct fault categories. By leveraging the correlations among indicators, it becomes feasible to streamline the number of necessary indicators while maintaining robust fault detection capabilities. Nevertheless, this requires a detailed data analysis of indicators over multiple cases before eliminating any indicators. The proposed method integrates two data sources: the vibra-



330 tional signals measured by accelerometers installed on the components and SCADA data. As a consequence, the application of this hybrid condition-monitoring fault detection method is limited to wind turbines that are equipped to measure both vibration and SCADA data.

6 Conclusions

A hybrid fault detection method was introduced that combines advanced signal processing techniques with machine learning to offer a comprehensive overview of the health of wind turbine drivetrain components. The proposed method provided a high-level health status overview to address the vast number of condition monitoring indicators, as individually monitoring all available condition indicators is not possible when managing multiple components in a single wind turbine across an entire wind farm. This method not only facilitates high-level health assessments but also allows for in-depth inspections of signal processing indicators, making it a versatile tool suitable for both experts and non-expert stakeholders. The proposed method has been validated across an entire wind farm fleet, where it consistently achieved satisfactory results in the majority of cases. To further validate its effectiveness, manual borescope inspections were conducted after the fault detection process, confirming the presence of mechanical faults. The combination of physical knowledge and the computational power of machine learning in our approach holds great promise for enhancing the reliability and efficiency of wind turbine maintenance and performance monitoring.

Author contributions. FJ was responsible for conceptualization, data curation, formal analysis, investigation, methodology development, project administration, software coding, validation, visualization, and writing of the original draft. CP contributed to conceptualization, methodology development, project administration, supervision, and the reviewing and editing of the manuscript. TV was involved in conceptualization, methodology development, and supervision. JH was responsible for conceptualization, funding acquisition, methodology development, supervision, and the final phase of paper review and editing.

Competing interests. The contact author has declared that none of the authors has any competing interests

350 *Acknowledgements.* The authors would like to acknowledge FWO (Fonds Wetenschappelijk Onderzoek) for their support through the SB grants of Faras Jamil (#1S63123N), post-doctoral grant of Cédric Peeters (#1282221N), and SBO project Robustify (S006119N). Furthermore, this research was supported by funding from the Flemish Government under the “Onderzoeksprogramma Artificiële Intelligentie (AI) Vlaanderen” programme. The authors are also grateful to the VSC Supercomputing Flanders centre for the support in the context of the VSC Cloud program.



355 References

- Global landscape of renewable energy finance 2023 — irena.org, <https://www.irena.org/Publications/2023/Feb/Global-landscape-of-renewable-energy-finance-2023>, [Accessed 26-09-2023], 2023.
- Antoni, J.: Fast computation of the kurtogram for the detection of transient faults, *Mechanical Systems and Signal Processing*, 21, 108–124, 2007.
- 360 Antoni, J.: Cyclostationarity by examples, *Mechanical Systems and Signal Processing*, 23, 987–1036, <https://doi.org/10.1016/j.ymssp.2008.10.010>, 2009.
- Antoni, J.: A critical overview of the “Filterbank-Feature-Decision” methodology in machine condition monitoring, *Acoustics Australia*, 49, 177–184, 2021.
- Antoni, J. and Borghesani, P.: A statistical methodology for the design of condition indicators, *Mechanical Systems and Signal Processing*, 365 114, 290–327, 2019.
- Antoni, J. and Randall, R.: Unsupervised noise cancellation for vibration signals: part I—evaluation of adaptive algorithms, *Mechanical Systems and Signal Processing*, 18, 89–101, 2004.
- Bai, M., Yang, X., Liu, J., Liu, J., and Yu, D.: Convolutional neural network-based deep transfer learning for fault detection of gas turbine combustion chambers, *Applied Energy*, 302, 117 509, <https://doi.org/10.1016/j.apenergy.2021.117509>, 2021.
- 370 Barbini, L., Ompusunggu, A. P., Hillis, A., du Bois, J., and Bartic, A.: Phase editing as a signal pre-processing step for automated bearing fault detection, *Mechanical Systems and Signal Processing*, 91, 407–421, 2017.
- Carvalho, T. P., Soares, F. A. A. M. N., Vita, R., da P. Francisco, R., Basto, J. P., and Alcalá, S. G. S.: A systematic literature review of machine learning methods applied to predictive maintenance, *Computers Industrial Engineering*, 137, 106 024, <https://doi.org/10.1016/j.cie.2019.106024>, 2019.
- 375 Chandola, V., Banerjee, A., and Kumar, V.: Anomaly Detection: A Survey, *ACM Comput. Surv.*, 41, <https://doi.org/10.1145/1541880.1541882>, 2009.
- Chesterman, X., Verstraeten, T., Daems, P., Sanjines, F. P., Nowé, A., and Helsen, J.: The detection of generator bearing failures on wind turbines using machine learning based anomaly detection, *Journal of Physics: Conference Series*, 2265, 032 066, <https://doi.org/10.1088/1742-6596/2265/3/032066>, 2022.
- 380 Chesterman, X., Verstraeten, T., Daems, P.-J., Nowé, A., and Helsen, J.: Overview of normal behavior modeling approaches for SCADA-based wind turbine condition monitoring demonstrated on data from operational wind farms, *Wind Energy Science*, 8, 893–924, <https://doi.org/10.5194/wes-8-893-2023>, 2023.
- Clark, C. E. and DuPont, B.: Reliability-based design optimization in offshore renewable energy systems, *Renewable and Sustainable Energy Reviews*, 97, 390–400, <https://doi.org/10.1016/j.rser.2018.08.030>, 2018.
- 385 Dibaj, A., Gao, Z., and Nejad, A. R.: Fault detection of offshore wind turbine drivetrains in different environmental conditions through optimal selection of vibration measurements, *Renewable Energy*, 203, 161–176, <https://doi.org/10.1016/j.renene.2022.12.049>, 2023.
- Gao, Z. and Odgaard, P.: Real-time monitoring, fault prediction and health management for offshore wind turbine systems, *Renewable Energy*, 218, 119 258, <https://doi.org/10.1016/j.renene.2023.119258>, 2023.
- García Márquez, F. P., Tobias, A. M., Pinar Pérez, J. M., and Papaelias, M.: Condition monitoring of wind turbines: Techniques and methods, 390 *Renewable Energy*, 46, 169–178, <https://doi.org/10.1016/j.renene.2012.03.003>, 2012.



- Helsen, J., Devriendt, C., Weijtjens, W., and Guillaume, P.: Condition monitoring by means of scada analysis, in: Proceedings of European wind energy association international conference Paris, 2015.
- Helsen, J., Peeters, C., Doro, P., Ververs, E., and Jordaens, P. J.: Wind Farm Operation and Maintenance Optimization Using Big Data, in: 2017 IEEE Third International Conference on Big Data Computing Service and Applications (BigDataService), pp. 179–184, 395 <https://doi.org/10.1109/BigDataService.2017.27>, 2017.
- Helsen, J., Peeters, C., Verstraeten, T., Verbeke, J., Gioia, N., and Nowé, A.: Fleet-wide condition monitoring combining vibration signal processing and machine learning rolled out in a cloud-computing environment, in: International Conference on Noise and Vibration Engineering (ISMA), pp. 17–19, 2018.
- Ho, D.: Bearing diagnostics and self-adaptive noise cancellation, Ph.D. thesis, UNSW Sydney, 1999.
- 400 HO, D. and RANDALL, R.: OPTIMISATION OF BEARING DIAGNOSTIC TECHNIQUES USING SIMULATED AND ACTUAL BEARING FAULT SIGNALS, *Mechanical Systems and Signal Processing*, 14, 763–788, <https://doi.org/10.1006/mssp.2000.1304>, 2000.
- Hutchinson, M. and Zhao, F.: Global Wind Report 2023, <https://gwec.net/globalwindreport2023/>, 2023.
- Ibrahim, R., Weinert, J., and Watson, S.: Neural networks for wind turbine fault detection via current signature analysis, 2016.
- Jamil, F., Verstraeten, T., Nowé, A., Peeters, C., and Helsen, J.: A deep boosted transfer learning method for wind turbine gearbox fault 405 detection, *Renewable Energy*, 197, 331–341, <https://doi.org/10.1016/j.renene.2022.07.117>, 2022.
- Jamil, F., Jara Avila, F., Vratsinis, K., Peeters, C., and Helsen, J.: Wind Turbine Drivetrain Fault Detection Using Multi-Variate Deep Learning Combined With Signal Processing, in: Turbo Expo: Power for Land, Sea, and Air, vol. 87127, p. V014T37A003, American Society of Mechanical Engineers, <https://doi.org/10.1115/GT2023-101689>, 2023a.
- Jamil, F., Peeters, C., Verstraeten, T., and Helsen, J.: Wind turbine drivetrain fault detection using physics-informed multivariate deep learn- 410 ing, in: Surveillance, Vibrations, Shock and Noise, Institut Supérieur de l’Aéronautique et de l’Espace [ISAE-SUPAERO], Toulouse, France, <https://hal.science/hal-04166103>, 2023b.
- Jia, F., Lei, Y., Lin, J., Zhou, X., and Lu, N.: Deep neural networks: A promising tool for fault characteristic mining and intelligent diagnosis of rotating machinery with massive data, *Mechanical Systems and Signal Processing*, 72-73, 303–315, <https://doi.org/10.1016/j.ymsp.2015.10.025>, 2016.
- 415 Kestel, K., Antoni, J., Peeters, C., Leclère, Q., Girardin, F., Ooijevaar, T., and Helsen, J.: The design of optimal indicators for early fault detection using a generalized likelihood ratio test, in: Surveillance, Vibrations, Shock and Noise, 2023.
- Leclère, Q., André, H., and Antoni, J.: A multi-order probabilistic approach for Instantaneous Angular Speed tracking debriefing of the CMMNO 14 diagnosis contest, *Mechanical Systems and Signal Processing*, 81, 375–386, 2016.
- Liu, D., Cui, L., and Cheng, W.: Fault diagnosis of wind turbines under nonstationary conditions based on a novel tacho-less generalized 420 demodulation, *Renewable Energy*, 206, 645–657, <https://doi.org/10.1016/j.renene.2023.01.056>, 2023.
- Liu, R., Yang, B., Zio, E., and Chen, X.: Artificial intelligence for fault diagnosis of rotating machinery: A review, *Mechanical Systems and Signal Processing*, 108, 33–47, <https://doi.org/10.1016/j.ymsp.2018.02.016>, 2018.
- Ma, S., Ding, W., Liu, Y., Ren, S., and Yang, H.: Digital twin and big data-driven sustainable smart manufacturing based on information management systems for energy-intensive industries, *Applied Energy*, 326, 119 986, <https://doi.org/10.1016/j.apenergy.2022.119986>, 425 2022.
- Marugán, A. P., Márquez, F. P. G., Perez, J. M. P., and Ruiz-Hernández, D.: A survey of artificial neural network in wind energy systems, *Applied Energy*, 228, 1822–1836, <https://doi.org/10.1016/j.apenergy.2018.07.084>, 2018.



- McCormick, A. and Nandi, A.: CYCLOSTATIONARITY IN ROTATING MACHINE VIBRATIONS, *Mechanical Systems and Signal Processing*, 12, 225–242, <https://doi.org/10.1006/mssp.1997.0148>, 1998.
- 430 Napolitano, A.: Cyclostationarity: New trends and applications, *Signal processing*, 120, 385–408, 2016.
- Nejad, A. R., Keller, J., Guo, Y., Sheng, S., Polinder, H., Watson, S., Dong, J., Qin, Z., Ebrahimi, A., Schelenz, R., et al.: Wind turbine drivetrains: state-of-the-art technologies and future development trends, *Wind Energy Science*, 7, 387–411, 2022.
- Peeters, C., Guillaume, P., and Helsen, J.: A comparison of cepstral editing methods as signal pre-processing techniques for vibration-based bearing fault detection, *Mechanical Systems and Signal Processing*, 91, 354–381, <https://doi.org/10.1016/j.ymsp.2016.12.036>, 2017.
- 435 Peeters, C., Gioia, N., and Helsen, J.: Stochastic simulation assessment of an automated vibration-based condition monitoring framework for wind turbine gearbox faults, *Journal of Physics: Conference Series*, 1037, 032 044, <https://doi.org/10.1088/1742-6596/1037/3/032044>, 2018a.
- Peeters, C., Guillaume, P., and Helsen, J.: Vibration-based bearing fault detection for operations and maintenance cost reduction in wind energy, *Renewable Energy*, 116, 74–87, <https://doi.org/10.1016/j.renene.2017.01.056>, real-time monitoring, prognosis and resilient control
440 for wind energy systems, 2018b.
- Peeters, C., Leclère, Q., Antoni, J., Lindahl, P., Donnal, J., Leeb, S., and Helsen, J.: Review and comparison of tachless instantaneous speed estimation methods on experimental vibration data, *Mechanical Systems and Signal Processing*, 129, 407–436, <https://doi.org/10.1016/j.ymsp.2019.02.031>, 2019a.
- Peeters, C., Verstraeten, T., Nowé, A., and Helsen, J.: Wind turbine planetary gear fault identification using statistical condition indicators
445 and machine learning, in: *International conference on offshore mechanics and arctic engineering*, vol. 58899, p. V010T09A014, American Society of Mechanical Engineers, <https://doi.org/10.1115/OMAE2019-96713>, 2019b.
- Peeters, C., Verstraeten, T., Nowé, A., and Helsen, J.: Wind turbine planetary gear fault identification using statistical condition indicators and machine learning, in: *International conference on offshore mechanics and arctic engineering*, vol. 58899, p. V010T09A014, American Society of Mechanical Engineers, 2019c.
- 450 Peeters, C., Antoni, J., Daems, P.-J., and Helsen, J.: Separation of vibration signal content using an improved discrete-random separation method, in: *Separation of vibration signal content using an improved discrete-random separation method*, pp. 1–9, ISMA 2020, 2020.
- Peeters, C., Antoni, J., Leclère, Q., Verstraeten, T., and Helsen, J.: Multi-harmonic phase demodulation method for instantaneous angular speed estimation using harmonic weighting, *Mechanical Systems and Signal Processing*, 167, 108 533, 2022.
- Perez-Sanjines, F., Peeters, C., Verstraeten, T., Antoni, J., Nowé, A., and Helsen, J.: Fleet-based early fault detection of wind turbine gear-
455 boxes using physics-informed deep learning based on cyclic spectral coherence, *Mechanical Systems and Signal Processing*, 185, 109 760, <https://doi.org/10.1016/j.ymsp.2022.109760>, 2023.
- Randall, R. B.: *Vibration-based condition monitoring: industrial, automotive and aerospace applications*, John Wiley & Sons, 2021.
- Tautz-Weinert, J. and Watson, S. J.: Using SCADA data for wind turbine condition monitoring—a review, *IET Renewable Power Generation*, 11, 382–394, <https://doi.org/10.1049/iet-rpg.2016.0248>, 2017.
- 460 Verstraeten, T., Gomez Marulanda, F., Peeters, C., Daems, P.-J., Nowe, A., and Helsen, J.: Edge computing for advanced vibration signal processing, in: *Edge computing for advanced vibration signal processing*, pp. 1–7, null ; Conference date: 10-07-2019 Through 12-07-2019, 2019a.
- Verstraeten, T., Nowé, A., Keller, J., Guo, Y., Sheng, S., and Helsen, J.: Fleetwide data-enabled reliability improvement of wind turbines, *Renewable and Sustainable Energy Reviews*, 109, 428–437, <https://doi.org/10.1016/j.rser.2019.03.019>, 2019b.



- 465 Vidal, Y., Pozo, F., and Tutivén, C.: Wind Turbine Multi-Fault Detection and Classification Based on SCADA Data, *Energies*, 11, <https://doi.org/10.3390/en11113018>, 2018.
- Wang, A., Pei, Y., Qian, Z., Zareipour, H., Jing, B., and An, J.: A two-stage anomaly decomposition scheme based on multi-variable correlation extraction for wind turbine fault detection and identification, *Applied Energy*, 321, 119 373, <https://doi.org/10.1016/j.apenergy.2022.119373>, 2022a.
- 470 Wang, J., Zhang, X., and Zeng, J.: Dynamic group-maintenance strategy for wind farms based on imperfect maintenance model, *Ocean Engineering*, 259, 111 311, <https://doi.org/10.1016/j.oceaneng.2022.111311>, 2022b.
- Widodo, A. and Yang, B.-S.: Support vector machine in machine condition monitoring and fault diagnosis, *Mechanical Systems and Signal Processing*, 21, 2560–2574, <https://doi.org/10.1016/j.ymsp.2006.12.007>, 2007.
- Xiang, L., Yang, X., Hu, A., Su, H., and Wang, P.: Condition monitoring and anomaly detection of wind turbine based on cascaded and
475 bidirectional deep learning networks, *Applied Energy*, 305, 117 925, <https://doi.org/10.1016/j.apenergy.2021.117925>, 2022.
- Zhang, M., Cui, H., Li, Q., Liu, J., Wang, K., and Wang, Y.: An improved sideband energy ratio for fault diagnosis of planetary gearboxes, *Journal of Sound and Vibration*, 491, 115 712, 2021.
- Zhang, W., Yang, D., and Wang, H.: Data-Driven Methods for Predictive Maintenance of Industrial Equipment: A Survey, *IEEE Systems Journal*, 13, 2213–2227, <https://doi.org/10.1109/JSYST.2019.2905565>, 2019.
- 480 Zhuang, F., Qi, Z., Duan, K., Xi, D., Zhu, Y., Zhu, H., Xiong, H., and He, Q.: A Comprehensive Survey on Transfer Learning, *Proceedings of the IEEE*, 109, 43–76, <https://doi.org/10.1109/JPROC.2020.3004555>, 2021.
- Zonta, T., da Costa, C. A., da Rosa Righi, R., de Lima, M. J., da Trindade, E. S., and Li, G. P.: Predictive maintenance in the Industry 4.0: A systematic literature review, *Computers Industrial Engineering*, 150, 106 889, <https://doi.org/10.1016/j.cie.2020.106889>, 2020.