

~~A listening experiment~~ Exploring the relationship between noise annoyance and sound quality metrics for airborne wind energy systems: Insights from a listening experiment

5 Helena Schmidt¹, Renato M. Yupa-Villanueva², Daniele Ragni¹, Roberto Merino-Martínez², Piet van Gool³, Roland Schmehl¹

¹Department of Flow Physics and Technology, Delft University of Technology, Delft, 2629 HS, The Netherlands

²Department of Aircraft Noise and Climate Effects, Delft University of Technology, Delft, 2629 HS, The Netherlands

³Department of Industrial Engineering and Innovation Sciences, Eindhoven University of Technology, Eindhoven, 5612 AE, The Netherlands

10 *Correspondence to:* Helena Schmidt (h.s.schmidt@tudelft.nl)

Abstract. ~~The present~~ This study investigates the relationship between sound quality metrics (SQMs) and noise annoyance ~~for caused by~~ airborne wind energy systems (AWESs). ~~reported in~~ In a controlled listening experiment. ~~A convenience sample of~~ 75 participants rated their annoyance on the International Commission on Biological Effects of Noise (ICBEN) scale in response to ~~nine~~ recordings from in-field measurements of two ~~different~~ fixed-wing and one soft-wing ground-generation
15 AWES. All recordings were normalized to an equivalent have the same A-weighted ~~equivalent~~ sound pressure level of 45 dBA. The ~~acoustical analyses showed~~ results revealed that sharpness was the only SQM predicting participants' annoyance. ~~the~~ Fixed-wing kites, characterized presented by sharper and a more tonal and narrowband sound signature profiles, were rated as more annoying than the soft-wing kite, characterized by higher loudness values. ~~Linear mixed effects models indicated that sharpness was the only SQM predicting participants' annoyance ratings and that the fixed wing kites were rated as more~~
20 annoying than the soft wing kite. In addition, the effect of some SQMs on annoyance depended on participant characteristics, with loudness having a weaker impact on annoyance for participants familiar with AWESs and tonality having a weaker effect on annoyance for older participants. These findings emphasize the importance of considering psychoacoustic factors in the design and operation of AWESs to reduce noise annoyance. ~~However, these moderation effects could be random due to the non-probability sampling used.~~

Wind energy is one of the most widely available renewable energy sources, and its capacity must increase by 320 GW by 2030 to meet the climate goals of the Paris Agreement (IEA, 2023; UNFCCC, 2016). ~~One~~ ~~A~~ promising yet unexploited novel renewable energy technology is airborne wind energy (AWE) (BVG Associates, 2022; Vos et al., 2024). AWE uses tethered flying devices, called kites, to harness higher-altitude winds. AWE can complement conventional wind energy by accessing ~~stronger, more consistent~~ wind resources above 200 ~~meters~~ ~~altitude~~ and providing power ~~supply at inaccessible or only in remote or~~ temporarily used ~~sites~~ ~~locations~~, such as ~~in the aftermath of~~ ~~during~~ natural disasters. ~~Research indicates that~~ ~~With its~~ substantially ~~lower~~ mass ~~savings translate to~~ ~~compared to conventional wind turbines~~, AWE also has a ~~lower~~ ~~smaller~~ environmental ~~impact~~ ~~footprint~~ (Hagen et al., 2023). While AWE is regarded as a potential game-changer for the energy transition ~~because it can harness higher-altitude winds, requires fewer materials compared to wind turbines, and can be~~ ~~deployed in remote or distant offshore locations~~ (IRENA, 2021), the technology has not yet converged towards a single standard configuration.

The existing prototypes can be divided into two main ~~categories~~ ~~configurations~~: ground-generation and fly-generation concepts, as shown in Fig. 1 (Cherubini et al., 2015). The former concept alternates between energy-generating reel-out and energy-consuming reel-in phases. During the reel-out phases, the kite is flown in a loop or figure of eight maneuvers, ~~generating more energy than is used during the reel-in phases, resulting in a positive net power output~~ (Vermillion et al., 2021). Ground-generation ~~AWE systems (AWESs)~~ commonly use soft-wing kites based on flexible membrane wings or fixed-wing kites typically made from carbon fiber-reinforced polymers. The latter concept employs small wind turbines onboard a fixed-wing kite ~~to generate electricity directly while airborne~~.

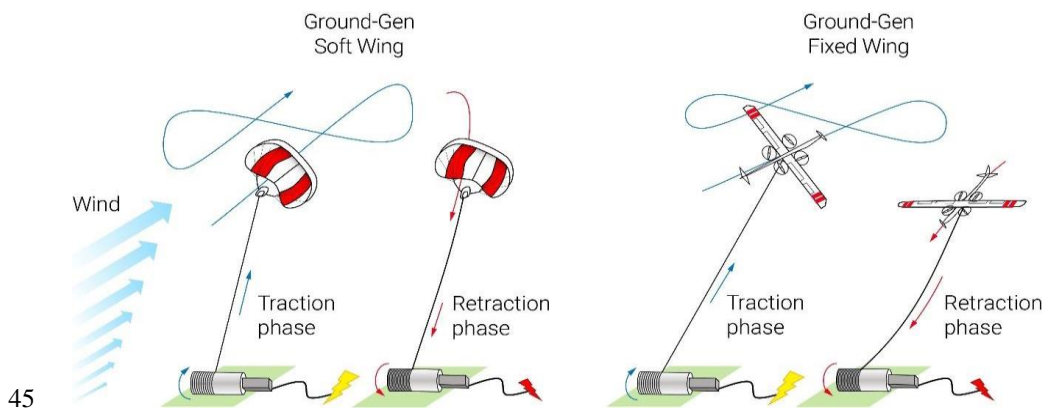


Figure 1: Schematic representation of ground-generation airborne wind energy systems employing a soft-wing and a fixed-wing kite, respectively (based on Fagiano et al., 2022).

As with any other wind energy technology, AWE systems (AWESs), like all wind energy technologies, must comply with environmental regulations on sound emissions to limit the impact on surrounding residents (van Kamp and van den Berg, 2021). Noise is a primary source of public opposition to wind turbines and a central aspect of debates on their social acceptance (Bednarek-Szczepeńska, 2023; Kirkegaard et al., 2024; Taylor and Klenk, 2019). While the health effects of noise remain contentious, even within the scientific community (Kirkegaard et al., 2024; Taylor and Klenk, 2019), substantial evidence indicates that individuals living near wind farms may frequently report noise annoyance, often accompanied by complaints such as sleep disturbances, psychological distress, and general functional impairments (Bakker et al., 2012; Godono et al., 2023; Haac et al., 2019; Hübner et al., 2019; Ki et al., 2022; Michaud et al., 2016a; Müller et al., 2023; Pawlaczyk-Łuszczynska et al., 2014; Pedersen and Persson Waye, 2004, 2007; Pohl et al., 2018; Radun et al., 2019; Turunen et al., 2021). Noise annoyance is typically defined as a negative evaluation of wind turbine sound emissions (Pohl et al., 2018) and is influenced by factors such as expected health impacts, perceived fairness in the planning process, individual sensitivity to noise, and the visual and landscape impact of the turbines (Haac et al., 2019; Hübner et al., 2019; Michaud et al., 2016b; Müller et al., 2023; Pawlaczyk-Łuszczynska et al., 2018; Schäffer et al., 2019; Tonin et al., 2016).

Extensive research on wind turbines shows that their sound emissions can be related to noise annoyance and stress symptoms. Noise annoyance refers to an individual's negative evaluation of wind turbine sound emissions, sometimes in combination with self-reported psychological or physical stress complaints, such as sleep disturbances, irritability, or lacking concentration. Although AWESs are said often assumed to be a quieter technology due to their higher operational altitudes (for a review, see Schmidt et al., 2022), this assumption disregards several non-technical factors that influence the human noise perception of wind energy sounds and technological aspects of the systems and their operation. Non-technical factors include individual dispositions (e.g., noise sensitivity, especially to low-frequency sounds) (Haac et al., 2019; Michaud et al., 2016b; Pedersen et al., 2010; Pedersen and Persson Waye, 2007; Schutte et al., 2007), perceptions (e.g., the aesthetics of the technology and/or the fairness of the planning process) (Haac et al., 2019; Hübner et al., 2019; Pedersen and Larsman, 2008), and attitudes (e.g., towards a specific wind energy projects or wind energy in general) the technology itself (Hoen et al., 2019; Hübner et al., 2019; Ki et al., 2022; Pawlaczyk-Łuszczynska et al., 2018; Pedersen and Persson Waye, 2007; Schäffer et al., 2019). Technological aspects also play a role, refer to including tethers, onboard rotating components onboard, and the relatively high speeds at which the kites operate while flying, which enhances tonal components and modulation of the sound emitted, severely affecting subjective human perception (Hansen et al., 2021; Lee et al., 2011; Schäffer et al., 2018; Torija et al., 2019; Yokoyama and Tachibana, 2016; Yonemura et al., 2021).

Although research on AWES sounds is still limited, a preliminary study from by Bouman (2023) revealed differences in the noise profiles of on an existing fixed-wing and soft-wing kites: The fixed-wing kite found had a narrowband spectral distribution of the emitted noise, enhanced by laminar flow regimes on the suction side of the wing with a relatively short chord. In the same study, a The larger soft-wing kite showed produced a broadband distribution mostly largely determined by turbulent boundary-layer trailing-edge noise. To the best of the authors' knowledge, However, how these noise sources relate to noise annoyance has not been investigated to date how these noise sources relate to potential noise annoyance has not been

studied yet. In fact, due to the limited deployment of AWESs to date, only one field study has investigated to what extent residents near an AWE test site are annoyed by its sound emissions Schmidt et al. (2024) conducted the only field study so far on AWES sound emissions. The study found finding that 35.2% of respondents living on average 2 km from the soft-wing AWES perceived could hear its sounds at home, with 13.1% being annoyed (score of at least 2 on a scale from 0 to 4) and 7.5% highly annoyed (score of at least 3 on the same scale). However, the study did not investigate the relationship between the AWES's sound emissions and the reported annoyance, leaving a critical gap in understanding the impact of AWES noise on communities. Hence, it must be better understood how the sound produced by AWESs relates to residents' annoyance to mitigate sound emissions effectively in the manufacturing and operation of AWESs.

The AWE industry has primarily focused on improving system reliability and scalability, with less emphasis on noise mitigation. However, developers are increasingly recognizing the challenges posed by noise (Junge et al., 2023) and are beginning to develop measurement methods and gather insights to mitigate its effects. Early acoustical research, like the present study, plays a crucial role in identifying factors that contribute to noise annoyance for AWESs. This knowledge can guide the design and implementation of mitigation measures before the technology becomes constrained by fixed design choices.

Existing research on wind turbines has typically relied on conventional sound indicators, such as the equivalent sound pressure level L_{eq} or its A-weighted version $L_{p,A,eq}$ (Kephalopoulos et al., 2014; Pieren et al., 2019). The $L_{p,A,eq}$ metric adjusts sound measurements to the sensitivity of the human ear, particularly to frequencies between 500 Hz and 6 kHz. However, these metrics do not adequately reflect the sound properties that explain annoyance (Bockstael et al., 2011; Pedersen and Persson Waye, 2004; Persson Waye and Öhrström, 2002; Pieren et al., 2019), such as the tonal and high-frequency content of turbine noise that has been linked to stronger annoyance (Oliva et al., 2017; Persson Waye and Agge, 2000; Yokoyama and Tachibana, 2016). Similarly, while the effective perceived noise level (EPNL), developed for aircraft noise (U.S. Department of Transportation, 2017), accounts for sound magnitude, spectral content, duration of the sound signal, and tonal components, it may not be well-suited for evaluating AWES noise (Kryter, 1960). Sound quality metrics (SQMs), such as loudness, tonality, sharpness, roughness, and fluctuation strength, offer an alternative approach by focusing on perceptual aspects of sound (Greco et al., 2023). Research on wind turbines (Merino-Martinez et al., 2019a; Persson Waye and Öhrström, 2002; Pockelé and Merino Martínez, 2024) and aircraft noise (Merino-Martinez et al., 2019b; More, 2010; Pereda Albarrán et al., 2018, 2017; Sahai, 2016; Vieira et al., 2019) has begun to explore how useful SQMs are for understanding annoyance.

The main objective of the present study is aims to investigate to what extent perception-based sound quality metrics how well (SQMs) can predict the noise annoyance caused by AWESs. It was not assumed that participants were knowledgeable about specific SQMs, nor were they informed of these metrics during the experiment. Instead, these metrics were objectively derived from acoustic analyses of the recordings. This The study also explores Psychoacoustic Annoyance (PA) metrics, which combined five multiple SQMs into global a single predictor of annoyance, comparing the PA metrics' performance with the conventional metric EPNL Psychoacoustic Annoyance (PA) metrics. The benefit of the PA metrics is that it they provides a quick estimate of the noise annoyance perceived for a given sound without having to measure measuring respondents' annoyance levels. Additionally, the performance of PA metrics for estimating annoyance levels will be compared

~~to conventional metrics (i.e., the effective perceived noise level EPNL). This study focuses on sound emissions of Using recordings from both soft-wing and fixed-wing kites, this study conducts recorded during in field measurements. A controlled laboratory listening experiment was conducted with 75 participants who rated their to assess annoyance in ratings for response to the different AWES recordings.~~

Section 2 describes the ~~applied~~ study design, procedure, and materials. Section 3 presents the results from the acoustical analyses of the sound recordings and the statistical analyses of the reported annoyance. Finally, Section 4 ~~offers summarizes~~ the ~~most relevant conclusions key findings and their implications from the study.~~

2 Methodology

In the following, the methodologies employed to record the sound samples and the laboratory listening experiment are explained in detail, including characteristics of the sound samples and participants, annoyance ratings, and laboratory procedures.

2.1 Sound recordings

Nine sound recordings from three different AWESs (i.e., three recordings from each prototype) were used for the listening experiment. ~~All recordings were taken during the energy harvesting reel-out phase.~~ A total signal length of 25 s per recording was extracted from longer, more complex audio footage that included additional non-relevant preparation phases for the three AWESs. All three AWESs implement ground-based electricity generation (see Section 1). One is a soft-wing kite (AWES A), and the other two are fixed-wing kites (AWESs B and C). Table 1 provides more information about the AWESs and the sound measurement campaigns.

~~The three recordings for each AWES were chosen to represent typical sound emissions during the reel-out phase of their respective systems. During this phase, the kite operates in crosswind maneuvers at high flight speeds while the reel-out speed is kept relatively low to maximize the energy production period. This operational setup implies that sound emissions from the kite, including contributions from onboard ram-air turbines, wing flutter, and tether vibrations, are the most significant. In contrast, sound emissions from the ground station (e.g., the generator) are comparatively minor due to the low reeling speed. Due to AWES C being towed by a truck, its recordings exhibited greater variability compared to the more consistent sound profiles of kites A and B.~~

Given that there are currently no specific sound regulations for AWESs, the sound pressure levels of the recordings were normalized to an equivalent A-weighted sound pressure level value of 45 dBA to align with European regulations for wind turbines, which commonly range between 35 dBA and 55 dBA during the day (Solman and Mattijs, 2021). Normalization refers to adjusting the sound pressure levels of recordings to a common reference value, ensuring comparability. A-weighting is a standard method to adjust sound measurements to reflect the human ear's sensitivity (approximately between 2 and 5 kHz).

~~Additionally, Normalizing~~ the sound pressure levels ~~helped-helps~~ to evaluate aspects of sound quality other than loudness (Boucher et al., 2024).

150 **Table 1** Overview of the investigated airborne wind energy systems (AWESs) and the corresponding sound measurement campaigns.

	AWES A	AWES B	AWES C
Kite type	Soft-wing	Fixed-wing	Fixed-wing
VTOL propellers	None	Present, inactive during the measurements	Present, inactive during the measurements
Ram-air turbine	Present, tied down during the measurements to prevent free-spinning	None	Present, active during the measurements
Flight pattern	Figure of eight	Circle	Circle
Wind speed (m/s)	5 – 10	9	8 – 9 ^a
Max relative flying airspeed (m/s)	38	42	43
Max kite altitude during experiment (m)	253	231	150
Distance to microphone (m)	428 – 620	305 – 689	Approximately 100 – 700
Test location and type	Field; standard flight test	Inoperative airfield; standard flight test	Inoperative airfield; tow test (i.e., the ground station was on the back of a truck driving straight to create an artificial wind field; while the kite was flying crosswind loops of

about 60 – 70 m
diameter)

Recording instrumentation	Brüel & Kjær 4189 microphone at 1 m height and 650 m downwind from the winch of the ground station; Brüel & Kjær UA-650 windscreen over the microphone to reduce wind sounds; Brüel & Kjær sound level meter 2250	Brüel & Kjær 4189 microphone at 1 m height and 679 m downwind from the winch of the ground station; Brüel & Kjær UA-1650 windscreen over the microphone to reduce wind sounds; Brüel & Kjær sound level meter 2250	Three Brüel & Kjær 4189 microphones were positioned at equal distances along the driving route; The vehicle sounds were mainly emitted at the ground level and absorbed by padded microphone covers
---------------------------	---	--	---

Note. VTOL: vertical take-off and landing. ^aThe values refer to the ambient wind speed, but the towing speed was higher.

2.2 Listening experiment

2.2.1 Psychoacoustic Listening Laboratory

155 The listening experiment was conducted in the Psychoacoustic Listening Laboratory (PALILA) at the Faculty of Aerospace
Engineering of Delft University of Technology. PALILA is a soundproof booth inside a separate room specifically designed
to research the human perception of aeroacoustics sound sources, including aircraft, drones, and wind turbines. The booth is
2.32 m long, 2.32 m wide, and 2.04 m tall inside. The background noise level inside the room is 13.4 dBA. Merino-Martínez
et al. (2023) describe the design and acoustic characterization in detail. PALILA's audio reproduction system is a Dell Latitude
160 7420 laptop (with an Intel® Core™ i5-1145G7 vPro® processor and 16 GB of RAM) connected through a universal audio
jack connector to a set of Sony WH-1000XM4 over-ear, closed-back headphones. The headphones allow for binaural hearing
and have a 40 mm diameter dome-type driver unit, a frequency response between 4 Hz and 40 kHz, and a sensitivity of 105
dB/mW at 1 kHz. The audio reproduction system had been calibrated with a G.R.A.S. 45BB-14 KEMAR head and torso
simulator. Participants are seated in the booth's center, and the laptop is placed on a table in front of them, as shown in Fig. 2.

165



Figure 2: **Exemplary photograph of the laboratory setup used for the listening experiment (source: authors' own).**

2.2.2 Participant recruitment and procedure

170 Participants were recruited using convenience and snowball sampling (Passer, 2014), mainly targeting students and employees. Participants were eligible to participate if they reported no hearing impairment and felt physically well on the day of the experiment. The study was conducted between June and September 2023. A trained experimenter instructed each participant individually, after which they completed the experiment independently.

In the first part of the questionnaire, participants were asked to self-report their hearing ability, hearing-affecting incidents (e.g., ear diseases, accidents, loud work environments), and well-being to establish their eligibility for participation. 175 The second part of the questionnaire, the listening experiment, started with a practice round to get familiar with the process and the scales. It was followed by two counterbalanced blocks separated by an automatic and mandatory one-minute break: one block on AWES sounds and another on wind turbine sounds (the latter are not reported here). The sequence of the sound recordings within each block was randomized to minimize order and learning effects on participants' annoyance ratings 180 (Passer, 2014). Participants listened to and evaluated one recording at a time. The recordings could not be replayed. The final part of the questionnaire asked about participants' noise sensitivity, familiarity with AWE, and demographic information. At the end of the experiment, the experimenter debriefed the participant and handed over a 20-euro voucher as a participation reward. On average, participants took 22 minutes on average to complete the experiment, excluding the examiner's briefings.

2.2.3 Annoyance ratings and questionnaire

185 Noise annoyance was defined in accordance with the ISO 15666 standard as an individual's adverse reaction to noise, which may include feelings of dissatisfaction, bother, or disturbance caused by noise exposure. ~~Annoyance was defined according to~~

the ISO 15666 standard as “one person’s individual adverse reaction to noise. For example, dissatisfaction, bother, annoyance and disturbance due to noise” (International Organization for Standardization, 2021). In line with the definition and recommended practice for psychoacoustic research (Alamir et al., 2019), annoyance levels were measured using the International Commission on Biological Effects of Noise (ICBEN) scale. For each sound recording, participants were asked to rate their experienced annoyance on both the verbal and numerical scale, and the average was calculated to increase measurement reliability (International Organization for Standardization, 2021). The 5-point verbal scale, ranging from “not at all” (0) to “extremely” (4), asked: “Imagine you are at home and hearing the noise at home; how much does the noise bother, disturb, or annoy you?” The 11-point numerical scale, ranging from 0 (“not at all”) through 10 (“extremely”), asked: “Imagine you are at home and hearing the noise at home; what number from 0 to 10 best shows how much you are bothered, disturbed, or annoyed by the noise?”. The wording of the scales was slightly adapted to acknowledge the laboratory setting.

To establish whether participants were eligible to partake in the study, their hearing ability was self-reported using a 5-point scale (from “poor” to “excellent”). ~~Since an audiometric test was unavailable, self-evaluations were used, have been shown to provide which are reasonably~~ valid ~~in assessing an measure of~~ individual’s hearing ability in the absence of audiometric testing (Hong et al., 2011). The occurrence of hearing-affecting conditions and incidents was also self-reported (e.g., hearing aid usage, ear diseases, accidents, tinnitus, loud work environments), and participants’ well-being was queried (e.g., common cold, fatigue).

Noise sensitivity was assessed ~~with using~~ the condensed ~~12-item~~ version of the ~~4-point~~ NoiSeQ scale. ~~Participants rated their agreement with statements related to noise sensitivity in various contexts on a 4-point scale,~~ ranging from “strongly disagree” (0) to “strongly agree” (3) ~~and consisting of 12 items covering noise sensitivity in different situations~~ (Griefahn, 2008). ~~Sample items are “When I am at home, I quickly get used to noise” (reverse coded) and “When people around me are noisy, I find it hard to do my work”.~~ This scale has been shown to have high internal consistency ($\alpha = 0.87$) (ibid.).

Furthermore, whether participants were familiar with AWESs and had ever listened to one before was also assessed. Finally, ~~information about~~ the participants’ age, gender, and education level ~~were as~~ gathered. A graphical user interface (GUI) that guided participants through the entire questionnaire, including the listening experiment, was specifically developed for this experiment using MATLAB R2021b (see supplementary materials).

2.3 Participant characteristics

Of the 75 participants, 73.3% were male, 24% female, and 2.7% non-binary. The proportion of men was higher because participants were mainly recruited from a technical university. The age ranged from 18 to 66 years, with an average of 28 years and a standard deviation of 9.57 years. The sample was overall highly educated, with 74.7% holding a Bachelor’s or Master’s degree, 16% currently or previously enrolled in university, and 8% having a doctoral degree. ~~On average, participants took 22 minutes to complete the experiment, excluding the examiner’s briefings.~~ The average reported hearing ability was very good [Mean (M) = 4.07, standard deviation (SD) = 0.64, scale: 1-5], and the mean noise sensitivity was medium (M = 1.56, SD =

0.38, scale: 0-3). About half of the participants reported being familiar with AWE (n = 37), but only 17.3% (n = 13) had
220 listened to an AWES prior to the experiment. The high familiarity in the sample stems from the presence of a renowned
research group on AWE at the faculty, exposing students and employees to the technology through institutional activities and
research dissemination. However, this familiarity was largely theoretical, as most participants had not heard AWES sounds
before the experiment. Because so few participants had heard an AWES beforeTherefore, the subsequent analyses did not
225 consider experience with AWES sounds as a confounding factorthe analyses did not consider this variable as a confounding
factor.

2.4 Post-processing of the results

2.4.1 Acoustic analyses

The EPNL metric (Kephalopoulos et al., 2014; Pieren et al., 2019) was used to explore how well conventional acoustic metrics
can describe-predict annoyance ~~to~~for AWESs. Furthermore, the following five SQMs (Merino-Martínez et al., 2021) were
230 calculated for each considered sound wave of every recording:

- Loudness (N): the perception of the sound magnitude corresponding to the overall sound intensity. Based on Zwicker's method, loudness was calculated using the ISO norm 532-1 (ISO/TC 43, 2017).
- Tonality (K): the perceived strength of unmasked tonal energy within a complex sound. Tonality was computed using
235 Aures' method (Aures, 1985).
- Sharpness (S): the high-frequency sound content. The DIN 45692:2009's (Deutsches Institut für Normung, 2009) method was used here.
- Roughness (R): the hearing sensation caused by modulation frequencies between 15 Hz and 300 Hz. Roughness was calculated according to Daniel and Weber (1997).
- Fluctuation strength (FS): assessment of slow fluctuations in loudness with modulation frequencies up to 20 Hz, with
240 maximum sensitivity for modulation frequencies around 4 Hz. The method by Osses Vecchi et al. (2016) was used.

The five SQMs were evaluated over time using a subset of the full sound recordings to assess the repeatability of the
metrics in the 25-s-25-second full-time span. To evaluate the sound quality through single quantities, the 5th percentile values
245 were used, which represent the level of each SQM exceeded during 5% of the total recording time (indicated henceforth by the subindex 5). From the SQMs, the PA metrics were calculated according to the models by Zwicker and Fastl (1999), More (2010), and Di et al. (2016). The general expression for the PA metric is

$$PA = N \left(1 + \sqrt{C_0 + C_1 \omega_S^2 + C_2 \omega_{FR}^2 + C_3 \omega_T^2} \right), \quad (1)$$

where the term ω_S contains the sharpness S (and loudness N) contribution:

$$250 \quad \omega_S = \begin{cases} 0.25(S - 1.75)\log_{10}(N + 10), & \text{for } S \geq 1.75, \\ 0, & \text{for } S < 1.75. \end{cases} \quad (2)$$

The term ω_{FR} contains the contributions of the roughness R and fluctuation strength FS (and loudness N),

$$\omega_{FR} = \frac{2.18}{N^{0.4}}(0.4FS + 0.6R), \quad (3)$$

and the term ω_T contains the tonality K (and loudness N) contribution,

$$255 \quad \omega_T = \begin{cases} 0, \\ (1 - e^{-0.29N})(1 - e^{-5.49K}) \\ \frac{6.41}{N^{0.52}}K, \end{cases} \quad (4)$$

for the model by Zwicker and Fastl (1999)
for the model by More (2010)
for the model by Di et al. (2016).

260 Lastly, the coefficients C_0 to C_3 of Eq. (1) for each PA model are listed in Table 2. The conventional sound metrics, SQMs, and PA metrics were computed using the open-source MATLAB toolbox SQAT (Sound Quality Analysis Toolbox) v1.1 (Greco et al., 2023). Importantly, descriptive terms, such as “harsh,” “beating,” and “tonal,” are later used to interpret the SQM results of the acoustic analysis. Participants did not provide these terms during the experiment.

265 **Table 2** Coefficients for Eq.(1) for each considered psychoacoustic (PA) model.

PA model	C_0	C_1	C_2	C_3
Zwicker and Fastl (1999)	0	1	1	0
More (2010)	-0.16	11.48	0.84	1.25
Di et al. (2016)	0	1	1	1

2.4.2 Annoyance ratings and percentage of highly annoyed respondents

270 Following Brink and colleagues’ approach (2016), verbal and numerical scale responses were linearly transformed to a 0-100 scale and averaged to obtain a total annoyance score per participant for each recording. The verbal and numerical scales were strongly correlated in the present data, justifying calculating average scores (Tau-b item correlations were between 0.75 and 0.88). The average scores were used to determine the percentage of highly annoyed (%HA) participants for each recording.

Following Miedema and Vos (1998) and the ISO standard (International Organization for Standardization, 2021), the top 28% of the scale were considered highly annoyed. That is, participants whose score was 72 or higher on the 100-point scale were classified as highly annoyed.

275 **2.4.3 Linear-mixed effects models**

Linear-mixed effects models were applied to identify significant predictors and to examine whether significant differences existed in the annoyance ratings across the three AWESs. Linear-mixed effects models can separate fixed effects (in this case, the acoustic predictors) from random effects (the participants with their individual characteristics). This type of hierarchical analysis has been successfully employed in past research on wind turbine noise annoyance (Merino-Martínez et al., 2021; 280 Schäffer et al., 2016, 2019).

In this study, the sound recordings were nested within AWES types as each participant rated every recording that belonged to one of the three AWES types. Additionally, participants served as another level of nesting, as each participant contributed multiple ratings across the different AWESs. Following Judd et al. (2017), the nested structure was addressed by employing linear mixed-effects models with random effects for participants and AWES types. The conditions were contrast- 285 coded to aid interpretation and included as random effects (ibid.). This approach allowed modeling the variability in annoyance ratings attributable to individual participants and differences between AWES types.

Following Aguinis and colleagues' step-wise approach (2013), participant characteristics were first included as fixed effects to determine their predictive value on annoyance ratings. Second, the SQMs were added as fixed effects, assessing each characteristic in separate models to avoid multicollinearity. Third, the impact of the SQMs was randomized to examine whether 290 these effects varied between individuals. Fourth, interaction terms were included between participant characteristics and SQMs to explore whether the participant characteristics could explain individual differences in the impact of SQMs on annoyance ratings.

Finally, using the -2-log likelihood ratio, the goodness-of-fit for the final linear mixed-effects models was assessed to quantify the variance explained by the fixed factors alone and by both fixed and random factors. Separate linear-mixed 295 effects models, including EPNL or the PA models as predictors, evaluated how effectively these (psycho)acoustic metrics could predict the annoyance ratings. All statistical analyses were performed using the software R version 4.4.0 (R Core Team, 2023), and linear mixed-effects models were fitted using the 'lme4' package (Bates et al., 2024).

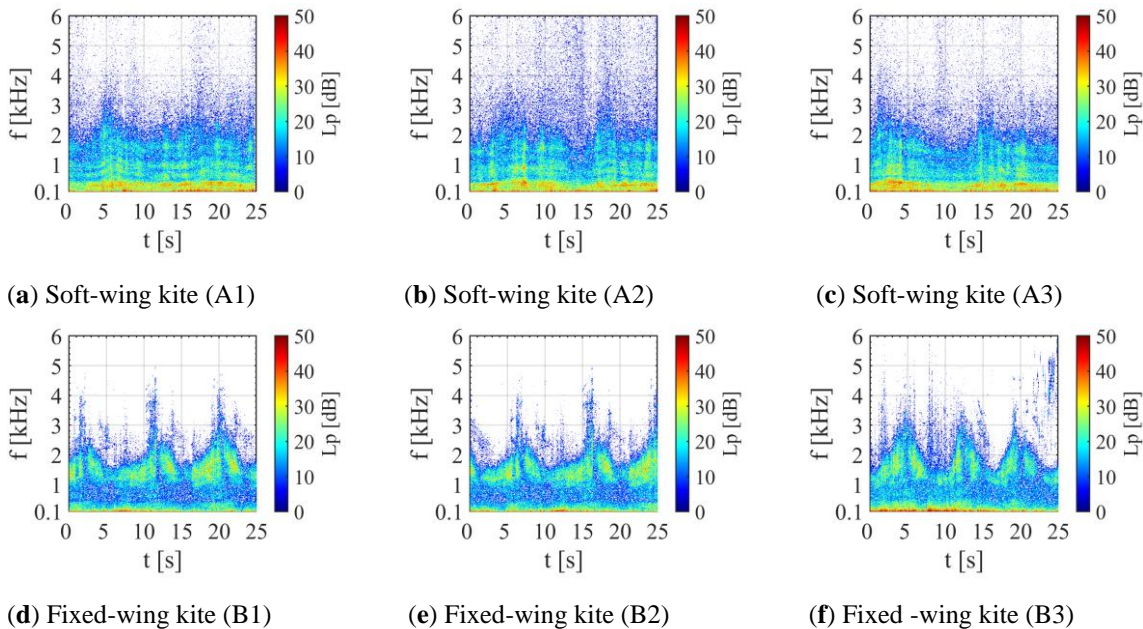
3. Results

3.1 Acoustic results

300 The time-frequency sound levels were represented as spectrograms (see Fig. 3). The spectrograms were calculated with a sampling frequency of 48000 Hz for every audio sample using 4800 samples per time block (i.e., 0.1s) with Hanning windowing and a 50% data overlap. These parameters provided a frequency resolution (Δf) of 10 Hz.

For AWES A, the lower frequencies (0-1 kHz) exhibited higher sound levels, which decreased as the frequency increased. Examining the spectrograms demonstrated confirmed that the recordings were representative. For AWES B, the highest sound levels were found at extremely low frequencies, up to approximately 200 Hz. Sound levels decreased between 200 Hz and 1 kHz but increased again in the frequency range between 1 and 3 kHz. AWES B exhibited a periodic sound pattern over time, likely due to its circular flight trajectory. A periodic sound pattern was observed for recordings corresponding to AWES C, characterized by a significant absence of sound levels in the frequency range between 200 Hz and 1.2 kHz (C1 and C2) and between 200 Hz and 2 kHz (C3). These periodic behaviors are again attributed to the circular flight trajectory.

310 For C1, the acoustic energy was predominantly concentrated between 15-25 s and in the frequency range between 1.2 and 4 kHz. C2 showed consistent sound levels, peaking between 1.2 and 5 kHz. Conversely, C3 displayed higher levels within the first 8 s at 2-5 kHz.



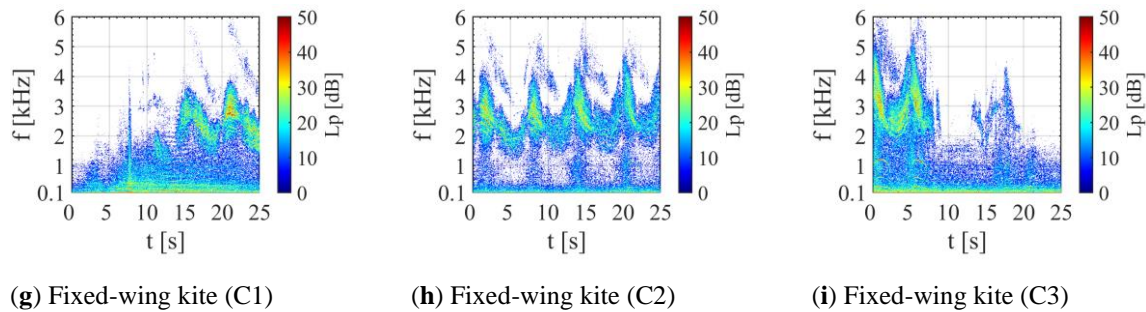


Figure 3: Spectrograms corresponding to each recording.

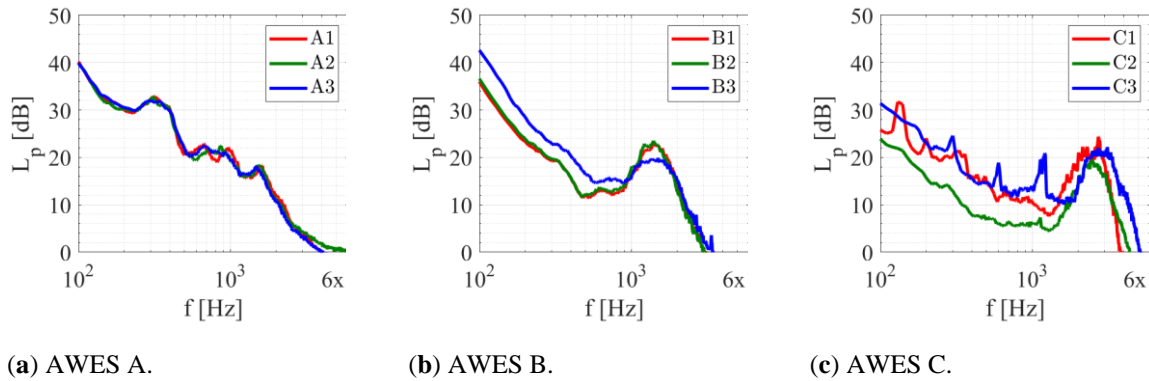
315

Time-averaged sound pressure levels (SPL) were computed, as shown in Fig. 4, to compare the sound levels produced by each type of AWES. For AWES A, AWES B, and the second recording of AWES C (C2), SPLs were averaged over the whole 25 s recording duration. In contrast, for the first and third recordings of AWES C (i.e., C1 and C3), the averages considered the last 10 s and first 8 s, respectively, when the kite noise was perceivable. In the listening experiment, the full recordings were used. Only slight variations were observed when considering the entire recording.

320

SPLs were virtually the same across the entire frequency range for AWES A, displaying a bump in the 200 Hz to 2 kHz range. AWES B showed similar trends and sound levels across the recordings, although there was a difference of approximately 4 dB between B1, B2, and B3 for frequencies up to 1 kHz. For frequencies higher than 1 kHz, the SPLs were nearly identical across all B-recordings, ~~with a bump pattern observed between 1 kHz and 2 kHz.~~ Regarding AWES C, time-averaged SPLs showed more significant differences for frequencies below ~~2-1.6~~ 1.6 kHz, with C3 having the highest sound levels, followed by ~~C2-C1~~ C2 and ~~C1-C2~~ C1. ~~Additionally, C3 elucidates peaks that suggest tonal behavior within this frequency range.~~ On the other hand, the frequencies above ~~2-1.6~~ 1.6 kHz were similar among the recordings, though C3 exhibited higher sound levels ~~approximately 6 dB higher~~ than C1 and C2 in the 3 to 5 kHz range. ~~Additionally, it~~ was also observed that AWES A and AWES B had higher sound levels than AWES C, particularly for frequencies below 100 Hz, see Fig. 5. The SPLs in C1 and C3 exhibited a tonal behavior in the frequency range of 60 to ~~2000-1300~~ 1300 Hz, which is believed to be related to the ram-air turbine. The flight patterns for both AWESs B and C are circular, which ~~could cause the bump sound pattern~~ may induce specific turbulent flow characteristics around the kite's surfaces and structures for frequencies higher than 1 kHz. In contrast, AWES A, which follows a figure eight flight pattern, did not show this acoustic behavior.

330



335 **Figure 4: Time-averaged sound pressure levels for each airborne wind energy system (AWES).**

Fig. 5 shows the comparison of time-averaged SPLs between each AWES. For this purpose, one representative case of each AWES configuration (i.e., A2, B3, and C3) has been selected. The soft-wing (A2) and fixed-wing (B3 and C3) kites exhibited a broadband acoustic trait. However, the fixed-wing kites showed an acoustic bump at high frequencies (950 to 3420 Hz for B3 and 1910 to 5180 Hz for C3) that the spectrum of the soft-wing kite did not. Additionally, the spectrum of C3 revealed narrowband peaks around 300 Hz, 600 Hz, and 1200 Hz, which could be related to the ram-air turbine. The 600 Hz and 1200 Hz peaks also seem to be harmonics of the rotations of the ram-air turbine (300 Hz), as they were equally spaced.

The broadband acoustic nature of the soft-wing kite is believed to arise from its flexible, deformable structure and complex, turbulent aerodynamic interactions. This acoustic component was also higher than the broadband acoustic signature found in fixed-wing kites (i.e., 180 to 1000 Hz for B3 and 100 to 1900 Hz for C3). This may be related to the soft-wing kites' fabric-based material, which promotes constant deformation and fluttering, creating turbulence that produces a stronger broadband noise component than fixed-wing kites. This turbulence-induced acoustic trait was spread over a broad frequency range, contributing to the broadband nature of the noise. For B3, the noise bump in the 1-2 kHz range might be due to vortex-shedding frequencies around the kite's body or edges. For C3, the additional components introduced by the ram-air turbine could shift these frequencies upwards to the 2-3 kHz range. In contrast, besides the broadband noise component observed in fixed-wing kites, the acoustic bump in the high-frequency range is likely due to the efficient transmission of vibrations through the rigid materials, which is not as pronounced in the more dampened, flexible soft-wing kite.

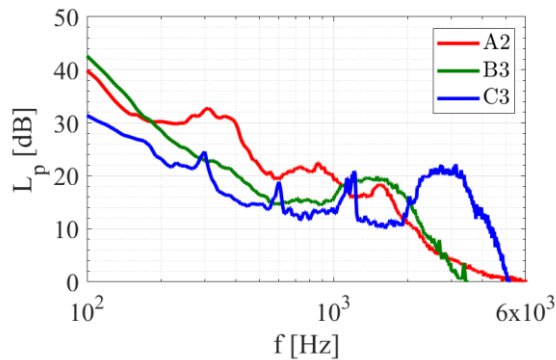


Figure 5: Comparison of time-averaged sound pressure levels of one representative recording for each airborne wind energy system (AWES).

3.2 Psychoacoustic sound quality metrics of AWESs and their relation to annoyance

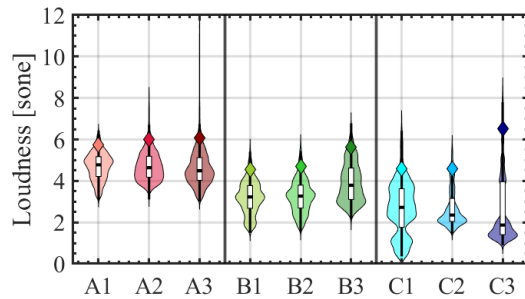
355 An analysis of the SQMs (Table 3) revealed differences across the three AWESs, as illustrated in the violin plots in Fig. 6. Regarding loudness (Fig. 6a), AWES A recordings exhibited nearly identical values, consistent with the spectra shown in Fig. 4a. AWES B recordings showed slight variations, with B3 displaying higher loudness levels than B1 and B2. This difference can be attributed to higher noise levels in the 100 to 1000 Hz range for B3 (Fig. 4b), likely due to its closer proximity to the microphone. For AWES C, C3 exhibited higher loudness values than C1, and C1 had higher values than C2. This pattern aligns
 360 with the spectra depicted in Fig. 4c.

Although the spectra for C1 and C3 appear similar, a noticeable difference in sound pressure levels (L_p) is observed for frequencies below 1.6 kHz, particularly for C2, which exhibits lower L_p compared to C1 and C3. Additionally, C3 elucidates peaks that suggest tonal behavior within this frequency range. Human hearing is most sensitive to frequencies between 2 and 5 kHz, as illustrated by the equal-loudness contours (ISO 226). Observing Figure 4c, it can be noted that C3 displays higher L_p values in the frequency range of 3–5 kHz, the higher loudness values of C3 compared to C1 can be explained by the ISO 532-1 loudness calculation accounting for the frequency-dependent human ear sensitivity, particularly in the 500 Hz to 6 kHz range. Among all the recordings, C3 showed the highest 5% percentile loudness values, potentially related to the sudden increase in sound levels around 1200 Hz. This sudden sound increase could be attributed to the vibration of the rigid structure of the fixed-wing kite compared to the soft-wing kite (i.e., inflatable kite made from fabric) or to the ram-air turbine
 365 on the fixed-wing kite.

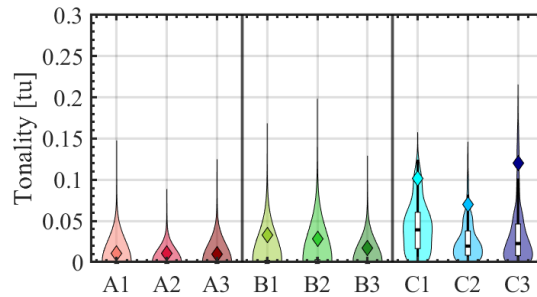
Regarding tonality (Fig. 6b), both AWES A and AWES B showed relatively low values compared to AWES C. This behavior can be explained by the narrowband peaks in the sound spectra observed in C1 and C3, as shown in Fig. 4c. The soft-wing kite generally exhibited the lowest tonality values, which can be explained by its tendency to produce more broadband and less tonal sound. Most of the noise from soft-wing kites is due to fabric flutter and aerodynamic noise.

Regarding sharpness (Fig. 6c), AWES C notably showed higher values than AWES A and B, consistent with the sound spectra (Fig. 4) since the sharpness calculation emphasizes frequencies for critical bands above 15 Bark (corresponding to approximately $f = 2700$ Hz). Additionally, C3 presented the sharpest sound, which aligns with the definition of sharpness since this kite reported higher sound values than the other kites for frequencies above 2700 Hz (Fig. 5). Roughness (Fig. 6d) and fluctuation strength (Fig. 6e) quantify the perception of modulated sounds with a modulation frequency between 15 Hz and 300 Hz and below 20 Hz, respectively.

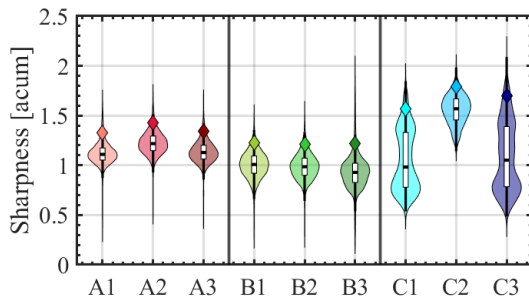
Regarding roughness, B3 was perceived as the 'harshesht' compared to all other recordings, while the AWES C recordings were the 'least harsh.' Regarding fluctuation strength, AWES B was observed to have the 'strongest beating' effect, whereas AWES C was 'less pulsating.'



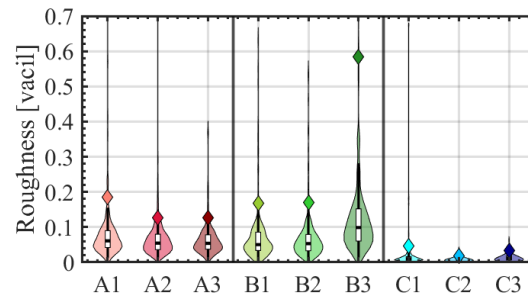
(a) Loudness.



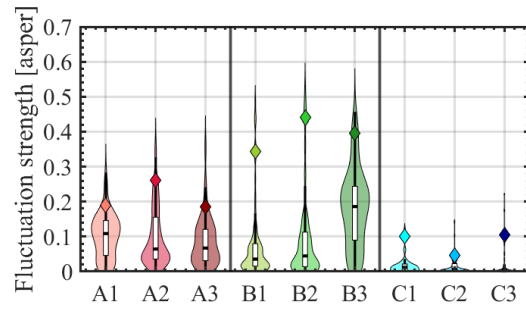
(b) Tonality.



(c) Sharpness.



(d) Roughness.



(e) Fluctuation strength.

Figure 6: Violin plots of sound quality metrics for all recordings. Plot widths represent the probability density at given values in the y-axis. Diamond markers indicate the 5th percentile values (i.e., the values exceeded 5% of the signal time, as explained in section 2.4.1). In each boxplot, the central horizontal line denotes the median values, and the edges of the white box plot represent the 25th and the 75th percentiles.

385

Table 3 The 5th percentile values of the five sound quality metrics per recording.

Recording	L5 (sone)	K5 (tu)	S5 (acum)	R5 (vacil)	FS5 (asper)
A1	5.75	0.011	1.32	0.18	0.19
A2	5.99	0.011	1.42	0.13	0.26
A3	6.90	0.010	1.34	0.13	0.19
B1	4.55	0.033	1.22	0.17	0.34
B2	4.71	0.028	1.21	0.17	0.44
B3	5.62	0.018	1.22	0.58	0.39
C1	4.57	0.102	1.57	0.05	0.10
C2	4.57	0.071	1.79	0.02	0.05

390

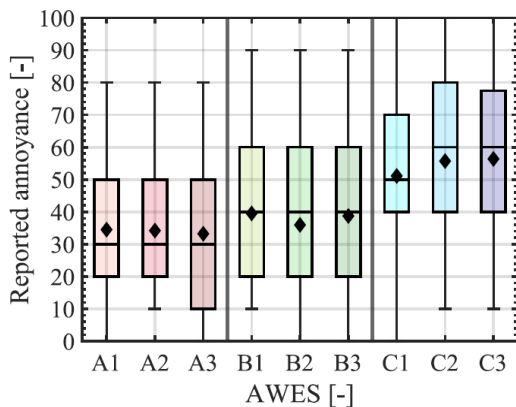
3.2.1 Analysis of annoyance ratings

395

The percentage of highly annoyed participants (%HA) per AWES ranged from around 7 to 33%, as seen in Table 4. Overall, %HA was highest for AWES C, followed by B and then A, corresponding with the previously reported higher tonality and sharpness values for AWES C compared to B and A. The mean annoyance ratings for the different AWES types ranged from approximately 34 for AWES A to 54 for AWES C (Fig. 7). In comparison, Merino-Martínez et al. (2021) reported average annoyance ratings of about 61-72 (converted from the ICBEN 11-point scale to a 0-100 scale) for wind turbine sound in a laboratory experiment. However, the $L_{p,A,eq}$ values in their study were lower, at around 38 dBA, than those used here.

400

The percentage of highly annoyed participants (%HA) per AWES type varied between approximately 1% and 19% (Table 4), with AWES C showing the highest %HA, followed by AWES B and then A. This trend aligns with the previously reported higher tonality and sharpness values for AWES C compared to B and A. The observed %HA range is slightly narrower than the 2 to 34% predicted by Schäffer et al. (2016) for wind turbine sound exposure in laboratory settings with an $L_{p,A,eq}$ range of 35 to 45 dBA.



405

Figure 7. Distribution of annoyance ratings per recording. In each boxplot, the diamond marker denotes the mean value; the central horizontal line denotes the median values; the edges of the box are the 25th and the 75th percentiles; and the whiskers extend to the most extreme data points.

Table 4 Percentage and frequency of highly annoyed participants (%HA) per airborne wind energy system (AWES).

AWES	%HA
A (soft-wing)	2-71.3 (52)

B (fixed-wing)	6.7 (85)
C (fixed-wing)	1822.7 (1417)

410

Additionally, the distribution of annoyance ratings obtained from the listening experiments for all AWESs is shown in Fig. 7. Pairwise comparisons between AWESs were conducted using the linear mixed-effects model. The model revealed significant differences across all three AWESs (all p-values < 0.05). In line with the previous results on the percentage of highly annoyed participants, fixed-wing kite C was, on average, rated as the most annoying [Mean (M) = 54.39, standard deviation (SD) = 22.91], followed by fixed-wing kite B (M = 39.78, SD = 22.04) and soft-wing kite A (M = 33.98, SD = 20.47).

415

A separate linear mixed-effects model was calculated to examine whether noise annoyance depended on participant characteristics. Noise sensitivity was significantly related to annoyance [t-statistic (t) = 2.035, p < 0.050], indicating that individuals more sensitive to noise generally rated the recordings as more annoying. Age (t = 1.332, p = 0.187) and familiarity with AWE (t = 0.056, p = 0.956) were not significantly related to annoyance ratings.

420

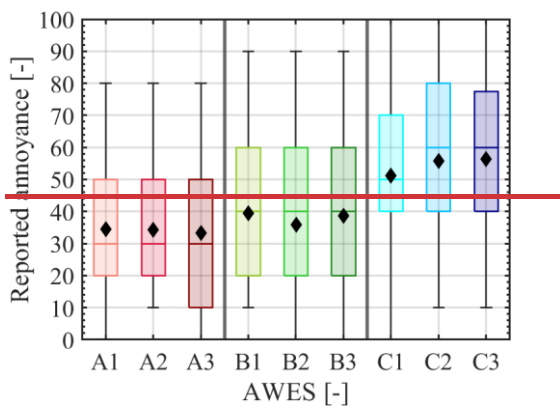


Figure 7: Distribution of annoyance ratings per recording. In each boxplot, the diamond marker denotes the mean value; the central horizontal line denotes the median values; the edges of the box are the 25th and the 75th percentiles; and the whiskers extend to the most extreme data points.

425

A linear mixed-effects model of the relation between annoyance ratings and SQMs showed that sharpness significantly predicted annoyance (t = 2.285, p = 0.023), while tonality (t = 0.933, p = 0.393), loudness (t = 0.416, p = 0.695), roughness (t = -0.601, p = 0.574), and fluctuation strength (t = 0.676, p = 0.529) did not. Fig. 8 displays the significant and strong relationship between sharpness and annoyance (r = 0.863, p = 0.002) is visualized in Fig. 8. The results align with the finding

430 that the annoyance ratings were significantly higher for AWES C, which exhibited higher sharpness values than AWESs A and B.

To evaluate whether the impact of the SQMs on annoyance ratings varied across participants, models incorporating SQMs as fixed effects were compared with those treating them as random effects, computing the -2-log likelihood ratio between these models. The models treating all SQMs except fluctuation strength as random effects—loudness ($\chi^2(1) = 18.725$,
435 $p < 0.001$), sharpness ($\chi^2(1) = 9.121$, $p = 0.003$), tonality ($\chi^2(1) = 7.146$, $p = 0.008$), and roughness ($\chi^2(1) = 8.723$, $p = 0.003$)—
showed a significantly improved fit compared to the models treating them as fixed effects. This suggests that all tested SQMs,
except for fluctuation strength, influenced annoyance ratings differently across individuals. These variations may reflect individual differences in factors such as noise sensitivity, age, or familiarity with AWES, which can shape how participants perceive and react to specific sound qualities.

440 ~~To explore showed varying effects on annoyance ratings among individuals. To investigate~~ whether these ~~between-~~
individual ~~characteristics could account for the observed differences in the effects of SQMs on annoyance ratings could be explained by participant characteristics (i.e., age, AWE familiarity, and noise sensitivity), the~~ interaction effects ~~of between~~
the SQMs ~~with the~~and participant characteristics (i.e., age, AWE familiarity, and noise sensitivity) were included in the models
with the random SQM effects. The results revealed that the interaction effect of participant characteristics and loudness was
445 significant for AWE familiarity ($t = -2.902$, $p = 0.005$) but not for age ($t = 0.988$, $p = 0.327$) nor noise sensitivity ($t = 0.699$, $p = 0.049$). That is, the effect of loudness on annoyance was weaker for those more familiar with AWE. This familiarity may be intertwined with more positive attitudes toward AWE, potentially explaining the lower levels of noise annoyance observed—a pattern reported in studies on wind turbines (Dällenbach and Wüstenhagen, 2022; Hoen et al., 2019; Hübner et al., 2019).
Furthermore, the interaction effect of participant characteristics and tonality was significant for age ($t = -2.233$, $p = 0.028$) but
450 not for AWE familiarity ($t = -0.452$, $p = 0.652$) nor noise sensitivity ($t = 0.045$, $p = 0.964$). This suggests that the effect of
tonality on annoyance was weaker for older individuals, also independent of participants' self-reported hearing ability.

The interaction effects of participant characteristics and sharpness, roughness, and fluctuation strength were not
significant for any of the included participant characteristics (with p-values ranging from 0.139 to 0.915). The full model,
including all interactions between participant characteristics and SQMs, explained 19% of the variance in annoyance scores
455 due to the fixed effects alone and 82% of the variance when both fixed and random effects were considered.

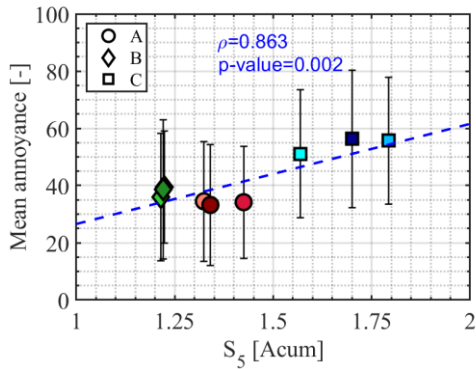


Figure 8: Linear correlation between the average annoyance rating per recording and sharpness across the airborne wind energy systems (AWESs).

460

3.2.2 Validity of conventional and psychoacoustic metrics in predicting annoyance ratings for AWESs

It was explored with linear mixed-effects models to what extent EPNL as a conventional metric and the Psychoacoustic Annoyance (PA) (i.e., Zwicker and Fastl, [1999](#); More, [2010](#); and Di et al., [2016](#)) models predict the annoyance ratings reported in the experiment. Table 5 presents the values used to perform these analyses. EPNL ($t = 0.700$, $p = 0.515$) did not significantly predict the annoyance ratings. Linear mixed-effects models comparing the annoyance ratings with the estimated annoyance scores (5th percentile values) for each PA metric separately (Zwicker and Fastl, [1999](#); More, [2010](#); and Di et al., [2016](#)) showed that the PA metrics did not significantly predict the annoyance ratings: Zwicker and Fastl ($t = 0.117$, $p = 0.911$), More ($t = 0.541$, $p = 0.612$), and Di et al. ($t = 0.466$, $p = 0.661$). Because PA metrics heavily depend on loudness, the aforementioned normalization of all recordings might explain why the PA metrics were not significant predictors.

470

Table 5 EPNL and 5th percentile values of the three psychoacoustic (PA) models per recording.

Recording	Conventional metric	PA models		
	EPNL (EPNLdB)	Zwicker and Fastl	More	Di et al.
A1	61.2146	6.6344	6.2142	6.6352
A2	60.3708	6.6663	6.3786	6.6832
A3	59.7796	6.9043	6.5423	6.9138

B1	59.2138	5.1527	4.9296	5.2142
B2	58.8830	5.2055	4.6478	5.2324
B3	60.8026	7.5308	6.5923	7.5316
C1	61.6614	4.8561	4.9263	5.3365
C2	61.9017	4.7786	4.8967	5.1501
C3	63.7321	7.0838	7.4605	8.2037

4 Discussion

475 To characterize the relation between sound quality metrics (SQMs) and noise annoyance for airborne wind energy systems (AWESs), a laboratory listening experiment was conducted, including acoustic analyses of the used, scaled sound recordings from three AWESs. The findings indicate differences in the SQMs across the three AWESs, with the fixed-wing kites showing higher loudness and tonality values than the soft-wing kite. This is mostly due to the former's aerodynamic characteristics and the use of a ram-air turbine for the C fixed-wing kites. The lower values for the soft-wing kite can be explained by its tendency to produce more broadband and less tonal sound. In addition, the fixed-wing kites presented relatively higher sharpness values

480 than the soft-wing kite. When using the results from the SQM analyses to predict participants' annoyance ratings for the recordings from the three AWESs, it was found that only sharpness significantly predicted annoyance. This corresponds with the finding that participants were significantly more annoyed by recordings from the fixed-wing kites than the soft-wing kite. Interestingly, the effect of some SQMs on annoyance depended on participant characteristics, with loudness having a weaker impact on annoyance for those more familiar with AWE and tonality having a weaker effect on annoyance for older individuals.

485 These moderation effects should be cautiously interpreted because they could be random due to the non-probability sampling and the lack of representativeness of the sample in this study. Neither the conventional metric (i.e., EPNL) nor the PA metrics significantly predicted the annoyance ratings. However, this is most likely due to scaling the recordings to the same dBA value. Through a controlled listening experiment, this study explored the relationship between sound quality metrics (SQMs) and noise annoyance for airborne wind energy systems (AWESs). Sharpness emerged as the sole SQM that significantly predicted

490 annoyance. Fixed-wing systems were perceived as more annoying than the soft-wing kite, likely due to their sharper and more tonal sound profiles. The higher loudness values found for the soft-wing kite can be explained by its aerodynamic characteristics that produce more broadband and less tonal sound. In contrast, the higher tonal sound signature of fixed-wing kite C is attributable to its ram-air turbine. Participant characteristics moderated the effects of certain SQMs: Participants

familiar with AWESs were less annoyed by louder recordings than unfamiliar participants, and older individuals were less
495 annoyed by more tonal sounds than younger individuals. These moderation effects should be cautiously interpreted because
they could be random due to the non-probability sampling and the lack of representativeness of the sample in this study.
Contrary to prior research on wind turbines and drones (Kawai et al., 2024; Merino-Martínez et al., 2021), conventional noise
metrics like the effective perceived noise level (EPNL) and Psychoacoustic Annoyance (PA) models did not predict annoyance
effectively, likely due to the normalization of sound pressure levels across recordings in this study.

500 This study builds on findings from related research on wind turbines and drones, which share acoustic and operational
parallels with AWESs. Research on wind turbines often focuses on sound pressure levels, while studies on SQMs remain
scarce. However, some work suggests that tonality and loudness predict annoyance (Merino-Martínez et al., 2021; Yonemura
et al., 2021). Drone research, by contrast, has more thoroughly explored SQMs, with loudness, tonality, and sharpness
consistently identified as key predictors of annoyance (Casagrande Hirono et al., 2024; Green et al., 2024; Kawai et al., 2024;
505 König et al., 2024; Torija and Nicholls, 2022). These systems are operationally similar to AWESs, particularly in their dynamic
flight stages and use of propeller-like mechanisms. For drones, annoyance peaks during take-offs and landings, which could
also be the case for AWESs and should be investigated in future studies. While the current study confirmed sharpness as a
critical predictor of annoyance, tonality, and loudness were significant only in interaction with participant characteristics (i.e.,
age and familiarity, respectively).

510 The findings should be interpreted in light of several limitations. First, the study used a convenience sample, primarily
recruiting students and employees from a technical university. This introduces potential selection bias and limits the
generalizability of the results to the broader population, especially residents in areas where AWESs might be deployed. The
sample was rather young, predominantly male, and highly educated, which may not accurately represent the diversity of
individuals who might encounter AWES noise in real-world settings. Second, the controlled laboratory setting ensured
515 consistency but did not replicate real-world listening conditions. Participants rated annoyance without contextual factors like
visual exposure to AWESs, other environmental sounds, or social and psychological influences (e.g., fairness perception of
the planning process) that typically influence noise annoyance in the field. Third, participants' short-term annoyance ratings
do not capture the potential cumulative effects of prolonged or repeated exposure. Fourth, although 75 participants are on the
high end of sample sizes used in listening studies (Alamir et al., 2019), the statistical power to detect subtle effects or
520 interactions, particularly those involving individual differences (e.g., age, familiarity, noise sensitivity) was limited. Fifth, the
study investigated only three AWES prototypes (one soft-wing and two fixed-wing systems). The results may not generalize
to other AWES designs or operational configurations. Sixth, the study's methodology faced several challenges related to sound
recordings, particularly concerning the varying distances to the microphone (100–700 m) and the moving nature of the kites.
While normalization to 45 dBA mitigated some inconsistencies, the dynamic sound signatures created by the kites' flight
525 patterns introduced additional variability compared to the noise emissions of stationary wind turbines. Additionally, the
location of the observer or microphone significantly influences noise perception because the acoustic prominence of different
system components varies depending on the vantage point. For example, certain components, such as the kite, may dominate

530 acoustically when the observer is positioned directly below or in line with the kite's trajectory. In contrast, noise from the generator or tether vibrations may become more prominent at close distances to the ground station. Furthermore, environmental factors such as wind noise and ground reflections may have influenced the recordings despite mitigation efforts using windscreens. These limitations underscore that the results have only restricted applicability to the field. Schäffer et al. (2016) highlighted these challenges, emphasizing that laboratory and field studies should be viewed as complementary rather than directly comparable.

535 To address these limitations and advance the understanding of AWES acoustics, future research should explore annoyance during different phases of the AWES pumping cycle to identify the stages that cause the most impact and guide the development of targeted mitigation strategies. Research should also be expanded to include a wider variety of AWES prototypes, capturing these systems' diverse noise profiles and operational characteristics. Conducting field studies that account for environmental and contextual factors, such as background noise, visual exposure, and long-term sound patterns, would provide more ecologically valid insights into real-world annoyance. Additionally, studies should examine the effects of
540 extended exposure and repeated noise events on annoyance, focusing on potential consequences like sleep disturbances and stress. It is equally important to engage a broader range of demographic groups, particularly those living near current or proposed AWES installations, to ensure that findings are representative of affected populations. Finally, developing noise prediction models specifically tailored to AWES should be prioritized. These models should incorporate the dynamic operational characteristics of AWESs, such as variations in speed and trajectory, to improve their accuracy and relevance for
545 mitigating noise annoyance.

The design flexibility of AWESs provides unique opportunities to mitigate annoyance through targeted optimizations:

- 550 • Tunable system parameters: Unlike wind turbines, AWESs allow adjustments to size, speed, altitude, and flight patterns. For example, larger kites flying higher could reduce sharpness and modulation effects, while faster, lower-altitude configurations might be suitable where loudness is less critical.
- Ram-air turbine optimization: The onboard ram-air turbine supplies power to the kite control unit and sensors and can be designed for minimal noise emissions without significantly affecting the system's energy output or economic performance.
- 555 • Flight path design: Optimizing flight paths, such as larger figure-eight loops, could reduce modulation effects while adjusting reel-in and reel-out speeds may help minimize tonal noise.
- Customized configurations: AWESs can be tailored to site-specific conditions, balancing energy output with acoustic considerations. For example, quieter configurations may be prioritized in residential areas, while efficiency-driven designs might be more suitable for remote locations.
- Proactive engagement: Industry stakeholders should involve communities early in the planning process, using psychoacoustic data to communicate potential impacts and suggest mitigation strategies transparently.

560 By leveraging these design possibilities, the AWE industry could effectively address noise concerns, promoting broader technology acceptance.

5 Conclusion

565 This study identified sharpness as a key predictor of noise annoyance for AWESs, with fixed-wing kites eliciting higher annoyance than soft-wing designs. Fixed-wing kites had sharper and more tonal sound profiles, while the soft-wing kite had higher loudness values. Participant characteristics influenced the impact of loudness and tonality on annoyance, highlighting the complexity of subjective noise perception. The findings further emphasize the limitations of conventional noise metrics in assessing AWES noise, suggesting the need for tailored acoustic models. The industry can address noise challenges by integrating psychoacoustic considerations into the design and operation of AWESs, such as optimizing system parameters and flight patterns. Future research should expand on these findings by incorporating field studies, long-term exposure assessments, and analyses of diverse prototypes.

570

Data availability

The data that support the findings of this study are openly available in 4TU.ResearchData—~~at~~ https://data.4tu.nl/private_datasets/11wCOgnga-GfjzL4oufzdd1UPRPP2YVFVnjRaKeHJhE, reference number [doi: 10.4121/2716b49f-b44c-400a-a873-eea276b081f6].

575

Author contributions

HS, RMYV, DR, RMM, and RS planned the campaign; HS performed the measurements; HS, RMYV, and PvG analyzed the data; HS and RMYV wrote the manuscript draft; DR, RMM, PvG, and RS reviewed and edited the manuscript.

Competing interests

580 At least one of the authors is a member of the editorial board of Wind Energy Science. Roland Schmehl is a co-founder of and advisor for the start-up company Kitepower B.V.

Acknowledgments

We thank the three airborne wind energy developers and Naomi Bouman for providing the sound measurements and acoustic data. We are grateful to Niels Adema ~~with~~for helping with planning the campaign and supporting the measurements. We would also like to thank the anonymous reviewers for their valuable feedback and constructive comments, which have greatly improved the quality and clarity of this manuscript.

585

Financial support

This work was supported by the Dutch Research Council (NWO) and Kitepower B.V. [grant number 17628]. The research work of Roberto Merino-Martínez is funded by the project Listen to the future [project number 20247] of the research program Veni 2022 (Domain Applied and Engineering Sciences), which NWO partly finances.

590

References

- 595 Aguinis, H., Gottfredson, R. K., and Culpepper, S. A.: Recommendations for estimating cross-level interaction effects using multilevel modeling, *Academy of Management Proceedings*, 2013, 10839, <https://doi.org/10.5465/ambpp.2013.10839abstract>, 2013.
- Alamir, M. A., Hansen, K. L., Zajamsek, B., and Catcheside, P.: Subjective responses to wind farm noise: A review of laboratory listening test methods, *Renewable and Sustainable Energy Reviews*, 114, 109317, <https://doi.org/10.1016/j.rser.2019.109317>, 2019.
- Aures, W.: Procedure for calculating the sensory euphony of arbitrary sound signal, *Acustica*, 59, 130–141, 1985.
- 600 Bakker, R. H., Pedersen, E., van den Berg, G. P., Stewart, R. E., Lok, W., and Bouma, J.: Impact of wind turbine sound on annoyance, self-reported sleep disturbance and psychological distress, *Science of The Total Environment*, 425, 42–51, <https://doi.org/10.1016/J.SCITOTENV.2012.03.005>, 2012.
- Bates, D., Maechler, M., Bolker, B., Walker, S., Bojesen Christensen, R. H., Singmann, H., Dai, B., Scheipl, F., Grothendieck, G., Green, P., Fox, J., Bauer, A., Krivitsky, P. N., Tanaka, E., and Jagan, M.: Package ‘lme4’ - Linear Mixed-Effects Models using “Eigen” and S4, <http://dk.archive.ubuntu.com/pub/pub/cran/web/packages/lme4/lme4.pdf>, 2024.
- 605 Bednarek-Szczepańska, M.: The portrayal of wind energy and its social impacts in Poland’s regional and local media, *Czasopismo Geograficzne*, 94, 263–288, <https://doi.org/10.12657/czageo-94-11>, 2023.
- Bockstael, A., Dekoninck, L., De Coensel, B., Oldoni, D., Can, A., and Botteldooren, D.: Wind turbine noise: annoyance and alternative exposure indicators, in: *In: Forum acusticum*, 2011.
- 610 Boucher, M. A., Christian, A. W., Krishnamurthy, S., Tracy, T., Begault, D. R., Shepherd, K., and Rizzi, S. A.: Toward a Psychoacoustic Annoyance Model for Urban Air Mobility Vehicle Noise, 2024.
- Bouman, N.: Aeroacoustics of airborne wind energy systems, Master thesis, Delft University of Technology, Delft, 2023.
- Brink, M., Schreckenber, D., Vienneau, D., Cajochen, C., Wunderli, J.-M., Probst-Hensch, N., and Rössli, M.: Effects of scale, question location, order of response alternatives, and season on self-reported noise annoyance using ICBEN scales: A field experiment, *Int J Environ Res Public Health*, 13, 1163, <https://doi.org/10.3390/ijerph13111163>, 2016.
- 615 BVG Associates: Getting airborne - the need to realise the benefits of airborne wind energy for net zero/White Paper for Airborne Wind Europe, <https://doi.org/10.5281/zenodo.7809185>, 2022.
- Casagrande Hirono, F., Robertson, J., and Torija Martinez, A. J.: Acoustic and psychoacoustic characterisation of small-scale contra-rotating propellers, *J Sound Vib*, 569, 117971, <https://doi.org/10.1016/j.jsv.2023.117971>, 2024.
- 620 Cherubini, A., Papini, A., Vertechy, R., and Fontana, M.: Airborne Wind Energy Systems: A review of the technologies, *Renewable and Sustainable Energy Reviews*, 51, 1461–1476, <https://doi.org/10.1016/J.RSER.2015.07.053>, 2015.
- Dällenbach, N. and Wüstenhagen, R.: How far do noise concerns travel? Exploring how familiarity and justice shape noise expectations and social acceptance of planned wind energy projects, *Energy Res Soc Sci*, 87, 102300, <https://doi.org/10.1016/J.ERSS.2021.102300>, 2022.

- 625 Daniel, P. and Weber, R.: Psychoacoustical roughness: Implementation of an optimized model, *Acta Acustica united with Acustica*, 83, 113–123, 1997.
- Deutsches Institut für Normung: DIN 45692: Measurement technique for the simulation of the auditory sensation of sharpness, 2009.
- Di, G.-Q., Chen, X.-W., Song, K., Zhou, B., and Pei, C.-M.: Improvement of Zwicker’s psychoacoustic annoyance model aiming at tonal noises, *Applied Acoustics*, 105, 164–170, <https://doi.org/10.1016/j.apacoust.2015.12.006>, 2016.
- 630 Fagiano, L., Quack, M., Bauer, F., Carnel, L., and Oland, E.: Autonomous Airborne Wind Energy Systems: Accomplishments and Challenges, *Annual Review of Control, Robotics, and Autonomous Systems*, 5, 603–631, <https://doi.org/10.1146/ANNUREV-CONTROL-042820-124658>, 2022.
- Godono, A., Ciocan, C., Clari, M., Mansour, I., Curoso, G., Franceschi, A., Carena, E., De Pasquale, V., Dimonte, V., Pira, E., Dallapiccola, B., Normanno, N., and Boffetta, P.: Association between exposure to wind turbines and sleep disorders: A systematic review and meta-analysis, *Int J Hyg Environ Health*, 254, 114273, <https://doi.org/10.1016/j.ijheh.2023.114273>, 2023.
- 635 Greco, G. F., Merino-Martínez, R., Osses, A., and Langer, S. C.: SQAT: a MATLAB-based toolbox for quantitative sound quality analysis, in: *INTER-NOISE and NOISE-CON Congress and Conference Proceedings*, 7172–7183, https://doi.org/10.3397/IN_2023_1075, 2023.
- 640 Green, N., Torija, A. J., and Ramos-Romero, C.: Perception of noise from unmanned aircraft systems: Efficacy of metrics for indoor and outdoor listener positions, *J Acoust Soc Am*, 155, 915–929, <https://doi.org/10.1121/10.0024522>, 2024.
- Griefahn, B.: Determination of noise sensitivity within an internet survey using a reduced version of the Noise Sensitivity Questionnaire, in: *The Journal of the Acoustical Society of America*, 3449–3449, <https://doi.org/10.1121/1.2934269>, 2008.
- 645 Haac, T. R., Kaliski, K., Landis, M., Hoen, B., Rand, J., Firestone, J., Elliott, D., Hübner, G., and Pohl, J.: Wind turbine audibility and noise annoyance in a national U.S. survey: Individual perception and influencing factors, *J Acoust Soc Am*, 146, 1124–1141, <https://doi.org/10.1121/1.5121309>, 2019.
- Hagen, L. van, Petrick, K., Wilhelm, S., and Schmehl, R.: Life-Cycle Assessment of a Multi-Megawatt Airborne Wind Energy System, *Energies (Basel)*, 16, 1750, <https://doi.org/10.3390/en16041750>, 2023.
- 650 Hansen, K. L., Nguyen, P., Micic, G., Lechat, B., Catcheside, P., and Zajamšek, B.: Amplitude modulated wind farm noise relationship with annoyance: A year-long field study, *J Acoust Soc Am*, 150, 1198–1208, <https://doi.org/10.1121/10.0005849>, 2021.
- Hoen, B., Firestone, J., Rand, J., Elliot, D., Hübner, G., Pohl, J., Wisner, R., Lantz, E., Haac, T. R., and Kaliski, K.: Attitudes of U.S. Wind Turbine Neighbors: Analysis of a Nationwide Survey, *Energy Policy*, 134, 110981, <https://doi.org/10.1016/j.enpol.2019.110981>, 2019.
- 655 Hong, O., Ronis, D. L., and Antonakos, C. L.: Validity of Self-Rated Hearing Compared With Audiometric Measurement Among Construction Workers, *Nurs Res*, 60, 326–332, <https://doi.org/10.1097/NNR.0b013e3182281ca0>, 2011.

- Hübner, G., Pohl, J., Hoen, B., Firestone, J., Rand, J., Elliott, D., and Haac, R.: Monitoring annoyance and stress effects of wind turbines on nearby residents: A comparison of U.S. and European samples, *Environ Int*, 132, 105090, 660 <https://doi.org/10.1016/j.envint.2019.105090>, 2019.
- IEA: Net Zero Roadmap - A Global Pathway to Keep the 1.5 °C Goal in Reach, 2023.
- International Organization for Standardization: Technical specification ISO/TS 15666: Acoustics — Assessment of noise annoyance by means of social and socio-acoustic surveys, 2021.
- IRENA: Offshore renewables: An action agenda for deployment, Abu Dhabi, 2021.
- 665 ISO/TC 43: ISO 532-1:2017 Acoustics Methods for calculating loudness Part 1: Zwicker method, 2017.
- Judd, C. M., Westfall, J., and Kenny, D. A.: Experiments with more than one random factor: designs, analytic models, and statistical power, *Annu Rev Psychol*, 68, 601–625, <https://doi.org/10.1146/annurev-psych-122414-033702>, 2017.
- Junge, P., Lohss, M., Röben, O., Heide, D., and Kessler, A.: Abschlussbericht Verbundvorhaben SkyPower100, 2023.
- van Kamp, I. and van den Berg, F.: Health Effects Related to Wind Turbine Sound: An Update, *Int J Environ Res Public Health*, 18, 9133, <https://doi.org/10.3390/ijerph18179133>, 2021.
- 670 Kawai, C., Jäggi, J., Georgiou, F., Meister, J., Pieren, R., and Schäffer, B.: Short-term noise annoyance towards drones and other transportation noise sources: A laboratory study, *J Acoust Soc Am*, 156, 2578–2595, <https://doi.org/10.1121/10.0032386>, 2024.
- Kephalopoulos, S., Paviotti, M., Anfosso-Lédée, F., Van Maercke, D., Shilton, S., and Jones, N.: Advances in the development of common noise assessment methods in Europe: The CNOSSOS-EU framework for strategic environmental noise mapping, *Science of The Total Environment*, 482–483, 400–410, <https://doi.org/10.1016/j.scitotenv.2014.02.031>, 2014.
- 675 Ki, J., Yun, S.-J., Kim, W.-C., Oh, S., Ha, J., Hwangbo, E., Lee, H., Shin, S., Yoon, S., and Youn, H.: Local residents' attitudes about wind farms and associated noise annoyance in South Korea, *Energy Policy*, 163, 112847, <https://doi.org/10.1016/j.enpol.2022.112847>, 2022.
- 680 Kirkegaard, J. K., Cronin, T. H., Nyborg, S., and Frantzen, D. N.: The multiple understandings of wind turbine noise: Reviewing scientific attempts at handling uncertainty, <https://doi.org/10.5194/wes-2024-34>, 2 May 2024.
- König, R., Babetto, L., Gerlach, A., Fels, J., and Stumpf, E.: Prediction of perceived annoyance caused by an electric drone noise through its technical, operational, and psychoacoustic parameters, *J Acoust Soc Am*, 156, 1929–1941, <https://doi.org/10.1121/10.0028514>, 2024.
- 685 Kryter, K. D.: The meaning and measurement of perceived noise level, *Noise Control*, 6, 12–27, <https://doi.org/10.1121/1.2369423>, 1960.
- Lee, S., Kim, K., Choi, W., and Lee, S.: Annoyance caused by amplitude modulation of wind turbine noise, *Noise Control Eng J*, 59, 38–46, <https://doi.org/10.3397/1.3531797>, 2011.
- Merino-Martinez, R., Pieren, R., Snellen, M., and Simons, D.: Assessment of the sound quality of wind turbine noise reduction 690 measures, in: 26th international congress on sound and vibration, 2019a.

- Merino-Martinez, R., Vieira, A., Snellen, M., and Simons, D. G.: Sound quality metrics applied to aircraft components under operational conditions using a microphone array, in: 25th AIAA/CEAS Aeroacoustics Conference, <https://doi.org/10.2514/6.2019-2513>, 2019b.
- 695 Merino-Martínez, R., Pieren, R., and Schäffer, B.: Holistic approach to wind turbine noise: From blade trailing-edge modifications to annoyance estimation, *Renewable and Sustainable Energy Reviews*, 148, 111285, <https://doi.org/10.1016/j.rser.2021.111285>, 2021.
- Merino-Martínez, R., von den Hoff, B., and Simons, D. G.: Design and acoustic characterization of a psycho-acoustic listening facility, in: *Proceedings of the 29th International Congress on Sound and Vibration*, 2023.
- Michaud, D. S., Feder, K., Keith, S. E., Voicescu, S. A., Marro, L., Than, J., Guay, M., Denning, A., McGuire, D., Bower, T., 700 Lavigne, E., Murray, B. J., Weiss, S. K., and van den Berg, F.: Exposure to wind turbine noise: Perceptual responses and reported health effects, *J Acoust Soc Am*, 139, 1443–1454, <https://doi.org/10.1121/1.4942391>, 2016a.
- Michaud, D. S., Keith, S. E., Feder, K., Voicescu, S. A., Marro, L., Than, J., Guay, M., Bower, T., Denning, A., Lavigne, E., Whelan, C., Janssen, S. A., Leroux, T., and van den Berg, F.: Personal and situational variables associated with wind turbine noise annoyance, *J Acoust Soc Am*, 139, 1455–1466, <https://doi.org/10.1121/1.4942390>, 2016b.
- 705 Miedema, H. M. E. and Vos, H.: Exposure-response relationships for transportation noise, *J Acoust Soc Am*, 104, 3432–3445, <https://doi.org/10.1121/1.423927>, 1998.
- More, S. R.: *Aircraft noise characteristics and metrics*, Purdue University, West Lafayette, 2010.
- Müller, F. J. Y., Leschinger, V., Hübner, G., and Pohl, J.: Understanding subjective and situational factors of wind turbine noise annoyance, *Energy Policy*, 173, 113361, <https://doi.org/10.1016/j.enpol.2022.113361>, 2023.
- 710 Oliva, D., Hongisto, V., and Haapakangas, A.: Annoyance of low-level tonal sounds – Factors affecting the penalty, *Build Environ*, 123, 404–414, <https://doi.org/10.1016/j.buildenv.2017.07.017>, 2017.
- Osses Vecchi, A., García León, R., and Kohlrausch, A.: Modelling the sensation of fluctuation strength, in: *Proceedings of Meetings on Acoustics*, 050005, <https://doi.org/10.1121/2.0000410>, 2016.
- Passer, M. W.: *Research Methods: Concepts and Connections*, 1st ed., Worth Publishers, New York, 2014.
- 715 Pawlaczyk-Łuszczynska, M., Dudarewicz, A., Zaborowski, K., Zamojska-Daniszevska, M., and Waszkowska, M.: Evaluation of annoyance from the wind turbine noise: A pilot study, *Int J Occup Med Environ Health*, 27, 364–388, <https://doi.org/10.2478/S13382-014-0252-1>, 2014.
- Pawlaczyk-Łuszczynska, M., Zaborowski, K., Dudarewicz, A., Zamojska-Daniszevska, M., and Waszkowska, M.: Response to noise emitted by wind farms in people living in nearby areas, *Int J Environ Res Public Health*, 15, 1575, 720 <https://doi.org/10.3390/ijerph15081575>, 2018.
- Pedersen, E. and Larsman, P.: The impact of visual factors on noise annoyance among people living in the vicinity of wind turbines, *J Environ Psychol*, 28, 379–389, <https://doi.org/10.1016/j.jenvp.2008.02.009>, 2008.
- Pedersen, E. and Persson Waye, K.: Perception and annoyance due to wind turbine noise—a dose-response relationship, *J Acoust Soc Am*, 116, 3460–3470, <https://doi.org/10.1121/1.1815091>, 2004.

- 725 Pedersen, E. and Persson Waye, K.: Wind turbine noise, annoyance and self-reported health and well-being in different living environments, *Occup Environ Med*, 64, 480–486, <https://doi.org/10.1136/oem.2006.031039>, 2007.
- Pedersen, E., van den Berg, F., Bakker, R., and Bouma, J.: Can road traffic mask sound from wind turbines? Response to wind turbine sound at different levels of road traffic sound, *Energy Policy*, 38, 2520–2527, <https://doi.org/10.1016/j.enpol.2010.01.001>, 2010.
- 730 Pereda Albarrán, M. Y., Schültke, F., and Stumpf, E.: Sound Quality Assessments of Over-the-Wing Engine Configurations Applied to Continuous Descent Approaches, in: 2018 AIAA/CEAS Aeroacoustics Conference, <https://doi.org/10.2514/6.2018-4083>, 2018.
- Pereda Albarrán, Mi. Y., Sahai, A. K., and Stumpf, E.: Aircraft noise sound quality evaluation of continuous descent approaches, in: 46th international congress and exposition of noise control engineering, 2898–2909, 2017.
- 735 Persson Waye, K. and Agge, A.: Experimental quantification of annoyance to unpleasant and pleasant wind turbine sounds, in: 29th international congress and exposition of noise control engineering, 2000.
- Persson Waye, K. and Öhrström, E.: Psycho-acoustic characters of relevance for annoyance of wind turbine noise, *J Sound Vib*, 250, 65–73, <https://doi.org/10.1006/jsvi.2001.3905>, 2002.
- Pieren, R., Bertsch, L., Lauper, D., and Schäffer, B.: Improving future low-noise aircraft technologies using experimental perception-based evaluation of synthetic flyovers, *Science of The Total Environment*, 692, 68–81, <https://doi.org/10.1016/j.scitotenv.2019.07.253>, 2019.
- 740 Pockelé, J. S. and Merino Martínez, R.: Psychoacoustic Evaluation of Modelled Wind Turbine Noise, in: Proceedings of the 30th International Conference on Sound and Vibration Article 524 , 2024.
- Pohl, J., Gabriel, J., and Hübner, G.: Understanding stress effects of wind turbine noise – The integrated approach, *Energy Policy*, 112, 119–128, <https://doi.org/10.1016/j.enpol.2017.10.007>, 2018.
- 745 R Core Team: R: A Language and Environment for Statistical Computing, 2023.
- Radun, J., Hongisto, V., and Suokas, M.: Variables associated with wind turbine noise annoyance and sleep disturbance, *Build Environ*, 150, 339–348, <https://doi.org/10.1016/j.buildenv.2018.12.039>, 2019.
- Sahai, A. K.: Consideration of aircraft noise annoyance during conceptual aircraft design, Rheinisch–Westfälische Technische Hochschule , Aachen, 2016.
- 750 Schäffer, B., Schlittmeier, S. J., Pieren, R., Heutschi, K., Brink, M., Graf, R., and Hellbrück, J.: Short-term annoyance reactions to stationary and time-varying wind turbine and road traffic noise: A laboratory study, *J Acoust Soc Am*, 139, 2949–2963, <https://doi.org/10.1121/1.4949566>, 2016.
- Schäffer, B., Pieren, R., Schlittmeier, S., and Brink, M.: Effects of Different Spectral Shapes and Amplitude Modulation of Broadband Noise on Annoyance Reactions in a Controlled Listening Experiment, *Int J Environ Res Public Health*, 15, 1029, <https://doi.org/10.3390/ijerph15051029>, 2018.
- 755

- Schäffer, B., Pieren, R., Wissen Hayek, U., Biver, N., and Grêt-Regamey, A.: Influence of visibility of wind farms on noise annoyance – A laboratory experiment with audio-visual simulations, *Landsc Urban Plan*, 186, 67–78, <https://doi.org/10.1016/J.LANDURBPLAN.2019.01.014>, 2019.
- 760 Schmidt, H., de Vries, G., Renes, R. J., and Schmehl, R.: The Social Acceptance of Airborne Wind Energy: A Literature Review, *Energies (Basel)*, 15, 1384, <https://doi.org/10.3390/EN15041384>, 2022.
- Schmidt, H., Leschinger, V., Müller, F. J. Y., de Vries, G., Renes, R. J., Schmehl, R., and Hübner, G.: How do residents perceive energy-producing kites? Comparing the community acceptance of an airborne wind energy system and a wind farm in Germany, *Energy Res Soc Sci*, 110, 103447, <https://doi.org/10.1016/j.erss.2024.103447>, 2024.
- 765 Schutte, M., Marks, A., Wenning, E., and Griefahn, B.: The development of the noise sensitivity questionnaire, *Noise Health*, 9, 15–24, <https://doi.org/10.4103/1463-1741.34700>, 2007.
- Solman, H. and Mattijs, S.: UPWARDS - Project deliverable D7.2 - Reports with data from on and offline panels, 2021.
- Taylor, J. and Klenk, N.: The politics of evidence: Conflicting social commitments and environmental priorities in the debate over wind energy and public health, *Energy Res Soc Sci*, 47, 102–112, <https://doi.org/10.1016/j.erss.2018.09.001>, 2019.
- 770 Tonin, R., Brett, J., and Colagiuri, B.: The effect of infrasound and negative expectations to adverse pathological symptoms from wind farms, *Journal of Low Frequency Noise, Vibration and Active Control*, 35, 77–90, <https://doi.org/10.1177/0263092316628257>, 2016.
- Torija, A. J. and Nicholls, R. K.: Investigation of Metrics for Assessing Human Response to Drone Noise, *Int J Environ Res Public Health*, 19, 3152, <https://doi.org/10.3390/ijerph19063152>, 2022.
- 775 Torija, A. J., Roberts, S., Woodward, R., Flindell, I. H., McKenzie, A. R., and Self, R. H.: On the assessment of subjective response to tonal content of contemporary aircraft noise, *Applied Acoustics*, 146, 190–203, <https://doi.org/10.1016/j.apacoust.2018.11.015>, 2019.
- Turunen, A. W., Tiittanen, P., Yli-Tuomi, T., Taimisto, P., and Lanki, T.: Self-reported health in the vicinity of five wind power production areas in Finland, *Environ Int*, 151, 106419, <https://doi.org/10.1016/j.envint.2021.106419>, 2021.
- 780 UNFCCC: Paris Agreement to the United Nations Framework Convention on Climate Change 2015, 2016.
- U.S. Department of Transportation, F. A. A.: Noise Standards: Aircraft type and airworthiness certification, 2017.
- Vermillion, C., Cobb, M., Fagiano, L., Leuthold, R., Diehl, M., Smith, R. S., Wood, T. A., Rapp, S., Schmehl, R., Olinger, D., and Demetriou, M.: Electricity in the air: Insights from two decades of advanced control research and experimental flight testing of airborne wind energy systems, *Annu Rev Control*, 52, 330–357, <https://doi.org/10.1016/J.ARCONTROL.2021.03.002>, 2021.
- 785 Vieira, A., Mehmood, U., Merino-Martinez, R., Snellen, M., and G. Simons, D.: Variability of Sound Quality Metrics for Different Aircraft Types During Landing and Take-Off, in: 25th AIAA/CEAS Aeroacoustics Conference, <https://doi.org/10.2514/6.2019-2512>, 2019.
- Vos, H., Lombardi, F., Joshi, R., Schmehl, R., and Pfenninger, S.: The potential role of airborne and floating wind in the North
- 790 Sea region, *Environmental Research: Energy*, 1, 025002, <https://doi.org/10.1088/2753-3751/ad3fbc>, 2024.

Yokoyama, S. and Tachibana, H.: Perception of tonal components contained in wind turbine noise, in: INTER-NOISE and NOISE-CON Congress and Conference Proceedings, 2435–2446, 2016.

Yonemura, M., Lee, H., and Sakamoto, S.: Subjective Evaluation on the Annoyance of Environmental Noise Containing Low-Frequency Tonal Components, *Int J Environ Res Public Health*, 18, 7127, <https://doi.org/10.3390/ijerph18137127>, 2021.

795 Zwicker, E. and Fastl, H.: *Psychacoustics: Facts and models*, 2nd ed., Springer, Berlin, 1999.