

# Life Cycle Assessment of New Jersey Offshore Wind

Meghann Smith<sup>1</sup>, Nawal Shoaib<sup>3</sup>, Pankaj Lal<sup>1,2</sup>

<sup>1</sup> Department of Earth and Environmental Studies, Montclair State University, 1 Normal Avenue, Montclair, New Jersey 07043, USA

5 <sup>2</sup> Clean Energy and Sustainability Analytics Center, Montclair State University, 1 Normal Avenue, Montclair, New Jersey 07043, USA

<sup>3</sup> Climate Earth, 137 Park Place, Suite 204, Point Richmond, California, 94801, USA

*Correspondence to:* Meghann Smith (smithmeg@montclair.edu)

10 **Abstract.** As offshore wind gains momentum within US renewable energy goals, New Jersey’s ambitious targets for offshore wind development represent a significant opportunity to reduce emissions and transition towards cleaner energy sources. This study presents a life cycle assessment (LCA) of a planned offshore wind farm off of New Jersey’s coast, emphasizing the implications of a domestic supply chain. Key findings suggest that the offshore wind farm is projected to produce 0.013 kg CO<sub>2</sub> per kWh of electricity generated, reflecting a 98% decrease in carbon emissions compared to natural gas derived  
15 electricity. Further, when compared to carbon emissions of other renewable energy technologies, offshore wind outperforms both solar and onshore wind by 79% and 43%, respectively. This finding highlights offshore wind’s role in greenhouse gas (GHG) emissions reduction through decarbonizing the electricity generation sector. This role is reinforced through the case of a domestic supply chain, a necessary factor in mitigating transportation-related impacts, like fuel combustion, for decreasing emissions. Beyond GHG emissions, results indicate that steel-intensive materials used in turbines and infrastructure contribute  
20 heavily to toxicity-related impacts highlighting a need for seeking alternative, lower-impact materials. This research underscores the potential of offshore wind to reduce greenhouse gas emissions, and offers insight into the environmental dynamics and improved environmental impact based decision making to improve offshore wind deployment in the US.

## 1 Introduction

### 1.1 Offshore wind energy in New Jersey

25 Globally, offshore wind has been identified as a key player in mitigating the effects of climate change by reducing reliance on fossil fuel-based energy generation. In 2021, the United States (US) federal government announced the ambitious goal of deploying 30 gigawatts (GW) of offshore wind by 2030, and 110 GW by 2050 (The White House, 2021; US Department of Energy, 2022). In line with these national goals, New Jersey set the offshore wind goal of 7.5 GW by 2035, and 11 GW by 2040 (New Jersey Executive Order No. 92, 2019; New Jersey Executive Order No. 307, 2023). New Jersey’s current electricity  
30 generation profile does not meet the state’s needs; the state produces 64.4 terawatt-hours (TWh) of electric power per year (mostly from natural gas and nuclear sources), but consumes 74 TWh (EIA.gov, 2024). Offshore wind development opens the opportunity to displace the state’s reliance on non-renewable sources of electricity generation, improve energy security and independence, and contribute to the national goals by improving the electricity generation mix countrywide.

35 At the Federal level, Bureau of Ocean Energy Management (BOEM) has facilitated the lease sales of outer continental shelf (OCS) blocks for the development of offshore wind energy farms. Average wind speeds approximately 8-9 meters per second

at 90 meters high have been measured for New Jersey's coastline, making this region ideal for offshore wind development (U.S. Energy Information Administration, 2020; Hernando et al., 2023). There are currently three offshore lease areas with projects in development off the coast of New Jersey (Figure 1). Collectively, these lease areas and their proposed projects will have the capacity to produce 5.2 GW of clean energy. It is estimated that these projects would cut the state's electricity generation greenhouse gas emissions by 6 million tons annually by displacing fossil fuels (nj.gov, 2024). Supporting these and future offshore wind projects is the New Jersey Wind Port - an offshore wind marshaling port designed to provide open access to the Atlantic Ocean and offshore wind lease areas, and host the technical tradesmen and workforce needed to support the industry.



**Figure 1. Map of offshore wind project lease areas and New Jersey Wind Port**

While progress has been made towards reaching these goals, there are several barriers towards the sustainable development of offshore wind energy. One major concern is the limited domestic supply chain needed to support these projects. US Department of Energy (DOE) has established the Near-term Offshore Wind (NOW) initiative which outlines their research and development (R&D) efforts and plans to address the supply chain issue, among other concerns (US Department of Energy, 2023). Among these R&D efforts include two National Renewable Energy Laboratory (NREL) reports which discuss the

demand for and a road map towards a domestic offshore wind supply chain (Shields et al, 2022; Shields, et. al, 2023). In addition to the New Jersey Wind Port, several manufacturing facilities for critical offshore wind energy components have been announced along the Atlantic coastline which will help to support offshore wind development in the state. In order for US offshore wind to be successful, and financially viable, this supply chain must exist to meet the demand pipeline and maintain a sustainable industry. Dependence on established international supply chains has resulted in a cyclical pattern, where delays in project timelines contribute to financial losses, project cancellations, and escalating inflation, thereby exacerbating both costs and delays (National Offshore Wind Research and Development Consortium, 2021; Shields et al., 2023).

## 60 **1.2 Scope 1, 2, and 3 emissions**

The Greenhouse Gas (GHG) Protocol first defined scope 1, 2, and 3 emissions as a way of categorizing the different kinds of carbon emissions a company creates in its own operations and in its value chain (The Greenhouse Gas Protocol, 2004). Scope 1 emissions are from sources that the organization directly owns or controls. Scope 2 emissions are from the energy purchased in order to support the organizations operations. Scope 1 and 2 emissions are more straightforward to calculate, because the reporting organization has the primary data required in order to calculate the associated emissions. Scope 3 emissions encompass all other emissions that are not produced by the organization itself, but rather the wider value chain. These scopes are the basis for GHG reporting, and have been widely adopted for mandatory standardization on how organizations measure their emissions (The Greenhouse Gas Protocol, 2015). Because of dynamic supply chains and limited transparency across organizations, the indirect Scope 3 emissions can be incredibly challenging to calculate. It is estimated that over 70% of an organization's emissions could be categorized as Scope 3, making this a crucial component of environmental accounting (The Greenhouse Gas Protocol, 2011). By developing an extended environmental impact assessment which includes each scope of emissions, we stand to avoid the concern of "shifting the burden" to another part of the value chain. This circular or systems thinking is critical for accurate emissions accounting as well as sustainable metric design and development.

## **1.3 Life cycle assessment of wind energy**

Life cycle assessment (LCA) is a systematic analysis of environmental impact over the course of the entire lifetime of a product, process, or system. LCA is an advanced modelling technique, compared to traditional input-output models, in that it accounts for the interacting systems in a production value chain. LCA goes beyond traditional CO<sub>2</sub> accounting, and expands to include a suite of emissions and aggregates emission data into impact categories, which is useful in providing valuable data for informing sustainability initiatives. As LCA provides information to evaluate the environmental efficacy of the value chain, it is also useful for downstream and upstream hot-spot analysis which can lead to continuous improvement. LCA has been used extensively to evaluate the environmental impact of renewable energy technology and projects. By comparing these newer technologies to traditional fossil fuels, LCA has proven a useful tool for justifying the transition to these often costly and expansive projects.

85 Recent studies reveal that while offshore wind turbines generally produce significantly lower emissions compared to fossil  
fuel-based energy sources, their environmental impact can be significant due to the energy-intensive manufacturing of steel  
and other materials used in turbine construction. Materials production and transportation stages contribute substantially to the  
GHG emissions associated with offshore wind, often constituting up to 80% of the life-cycle emissions of a single turbine  
(Schreiber et al., 2021; Walker et al., 2022; Brussa et al., 2023; Moussavi et al., 2023). Globally, offshore wind life cycle  
90 studies have predominantly focused on European markets, where the industry is more established and benefits from the well-  
developed infrastructure. US studies are however limited; the nuances turbine design, grid integration challenges, limited  
supply chain, and specific regulatory requirements are not well understood (Moussavi et al., 2023).

LCA is unique in that geographical context is key for creating a realistic model; while LCAs in different geographies can  
95 provide useful insights, they fail to capture the details pertaining to specific geographies and technologies. This research  
addresses this subject gap by modelling the developing offshore wind industry in New Jersey with an established domestic  
supply chain.

## 2 Methods

### 2.1 Goal and scope of the study

100 This study uses LCA approach which quantifies the potential environmental impacts throughout the life cycle of a system; in  
this case the system refers to all life cycle stages from raw material extraction to waste management of an offshore wind farm  
(ISO 14040:2006, 2018; ISO 14044:2006, 2018). We performed the LCA using SimaPro Version 9.5 software, applying the  
ReCiPe 2016 method under the hierarchist (H) perspective, which calculates emissions based on global perspective on a 100-  
year time horizon (Huijbregts et al., 2016). The ReCiPe Midpoint method aggregates complex emission data into 18 cause-  
105 impact categories, while the Endpoint reflect damage at 3 areas of protection: human health, ecosystem quality, and resource  
scarcity (Table S1) (Goedkoop et al., 2009; Huijbregts et al., 2016). These two methods are complementary in that they  
highlight environmental flows with minimal uncertainty, and allows for easier interpretation and relevance of those  
environmental flows.

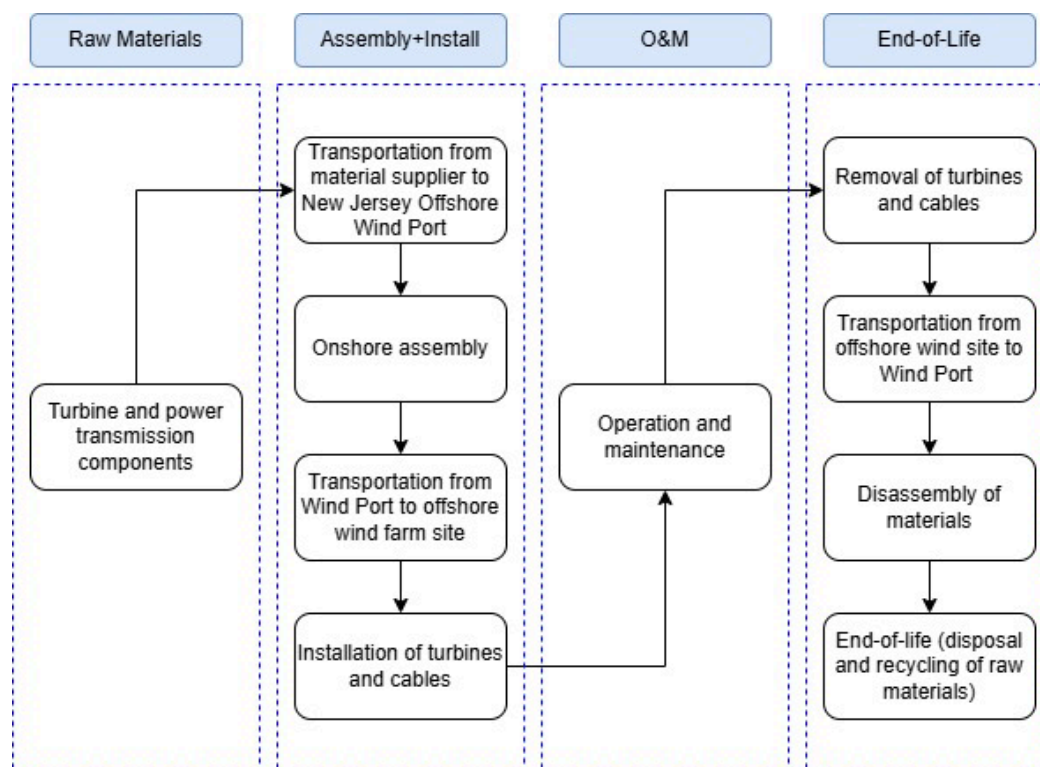
110 This offshore wind farm LCA is meant to act as a baseline model for offshore wind farms in development off the coast of New  
Jersey, US on the Atlantic continental shelf. The Atlantic Coast has shallower water depths, 60 meters (m) or less, that are  
suitable for fixed-bottom offshore wind turbines (US Department of Energy, 2022), as opposed to floating substructures.  
Atlantic Shores Offshore Wind, LLC was awarded lease area OSC-A-0499 in 2019, and will be launch in two projects (South  
and North) allowing for a combined 1,510 MW of renewable energy into the state of New Jersey. The Atlantic Shores Offshore  
115 Wind South Project is the furthest along in the planning and development phase among all New Jersey offshore wind projects  
(Atlantic Shores Offshore Wind, Project Information). Designed to operate up to 30 years, the South Project (219.2 km<sup>2</sup>) will

consist of 105-136 turbines spaced 1.9 km apart connected through inter-array cables, with the most westward point approximately 14 km from the shoreline. There will be two large offshore substations, which connect to the landfall point near Atlantic City through submarine cables. From the landfall point, the power is transmitted to an onshore substation about 20 km away (Atlantic Shores Offshore Wind, Project Information). Relying on the published details of the planned South Project to create the framework for this study makes for a narrow goal with a well-defined scope to reduce uncertainty in the model in a developing sector.

Because construction of this project is not projected to begin until after 2026, this LCA uses the International Energy Agency (IEA) Wind 15-Megawatt Offshore Reference Wind Turbine (IEA Wind 15-MW) with a fixed-bottom monopile support structure to model its offshore wind farm. We assume 105 turbines at a more conservative 25 year lifetime operating at 40% efficiency (capacity factor), with power transmission as specified in the official Atlantic Shores documentation as summarized above. Blades are the turbine component most susceptible to wear over time; however, they are built to last 20-25 years (Lui and Barlow, 2017; Majewski et al., 2022). This model further attempts to construct a domestic supply chain informing the transportation of goods and materials based on locations of announced manufacturing facilities operating on the same regional electricity generation mix (Shields et al., 2023; Smith et al., 2021). The selected functional unit is 1 kilowatt-hour (kWh) of electricity produced by the offshore wind farm to the onshore grid.

**2.2 System boundary**

In the system boundaries of the model, each life cycle stage is included: 1) Materials; 2) Assembly, transportation, and installation; 3) Operation and maintenance; 4) Dismantling, transportation, and end-of-life.



**Figure 2. System Boundary**

Not included in the LCA model is the existing onshore substation, which is used to transform high-voltage electricity so that it is suitable for local distribution. Local distribution, and end-use of electricity is also outside of the scope of this model as its considered part of the broader electricity grid infrastructure rather than unique to the offshore wind project itself. While the offshore substation is included in the model, we limit this to the steel structure and does not include electrical, communications, or safety equipment in order to focus on components with high material and energy impacts. Assumptions in the transportation stages includes shortest-distance travelled, both on land and on sea. A more advanced transportation model using weight-restricted truck routes and sea depth restricted navigation routes can provide additional insights once the exact locations of these facilities have been announced.

## 2.3 Life cycle inventory (LCI)

The data used in this analysis was collected and adapted from the Ecoinvent version 3.9.1 (allocation, cut-off by classification – unit) database among other governmental and academic literature sources, where calculations were made such that the model would be representative of an offshore wind farm as described in the Atlantic Shores Offshore Wind, LLC documentation, based on the study's functional unit of 1 kWh. The LCI is available in the study's Supplementary Material (Tables S2-S6).

### 2.3.1 Materials

#### IEA Wind 15-MW Turbine

The turbines are modelled off of the IEA Wind 15-MW, which was designed based off the GE Haliade-X 12MW turbine using a similar drivetrain configuration and specific power, meant to model the potential of offshore wind technology in coming years (Gaertner, 2020). The IEA Wind 15-MW is an International Electrotechnical Commission (IEC) Class I-B direct-drive machine, meaning that it is appropriate for high wind speeds (average 10m/second) and low (16%) turbulence, rated for 332 watts per square meter ( $\text{W/m}^2$ ).

The tower and monopile are an isotropic steel tube, where the hub height reaches 150 m allowing for 30 m of ground clearance from the blades, extends 30 m beneath sea level to the mudline. The monopile foundation has a 10 m diameter, and attaches to the seafloor using an embedded suction pile 45 m below the mudline. While steel makes up the large majority of the mass (95%), other materials such as those for cables, electronic devices, and lubricant oil are considered in the LCI (Raadal et al., 2014; Brussa et al, 2023).

The direct-drive nacelle uses a permanent-magnet, synchronous, radial flux outer rotor generator. This design offers several advantages, including fewer parts, lower complexity, and higher reliability compared to geared drivetrains. The assembly consists of a hub shaft supporting the turbine, and generator rotors on two bearings which are house on a turret and cantilevered from the bedplate, and the yaw system connects the bedplate base with the tower top. Based on the details shared in the IEA report, the nacelle, generator, and rotor are analyzed separately. While these components are primarily made of steel and iron, additional materials are considered including copper, transformers, electronics, and the magnet.

The blade design was based on the rotor diameter of 240 m; 3 117m blades attach to the rotor. The blade design is two main load-carrying carbon fiber spars connecting the root and the tip, with two shear webs that span the vertical length, leading and trailing edge reinforcing glass fiber, and foam filler panels. We assume a 90% of the weight of the blade come from 50/50 carbon fiber reinforced plastic (CFRP) and glass fiber reinforced plastic (GFRP), and 10% polyvinylchloride (PVC) foam.

#### Power Transmission

At its closest point, the South Project wind turbine area is approximately 14 km from the New Jersey shoreline, the turbines will be aligned in a uniform grid, connected through inter-array cables and inter-link cables (totalling about 440 km and 30 km respectively) buried about 2 m beneath the seabed. The inter-array cables are estimated at 35 kg/m, and the inter-link cables connecting to the substations are estimated at 50 kg/m. The project will require 2 large offshore substations, which will be located approximately 21 km from the landfall point near Atlantic City, estimating four high voltage direct current (HVDC) export cables totalling about 84 km buried about 2 m beneath the seabed (Atlantic Shores Offshore Wind, Appendix I-G), at approximately 60 kg/m. The proposed onshore interconnection cable route (landfall point to existing onshore substation) is

estimated at 20 km at approximately 40 kg/m. The material breakdown of power transmission and approximate weight per length of each type was informed through openAI and validated referencing previous literature (Brussa et al., 2023; Moussavi et al., 2023; OpenAI, 2023).

2.3.2 Assembly, transportation, and installation

Included in the assembly, transportation, and installation phase is the electricity used while operating on the regional grid which is estimated at 50 kilowatt-hours (kWh) per tonne of material (Brussa et al., 2023; Burger and Bauer, 2007), transportation of materials from suppliers to the New Jersey Wind Port (Shields et al., 2023), transportation of materials from the Wind Port to the wind farm (Atlantic Shores Offshore Wind, LLC, Project Information), seabed transformation (219.2 km²) and occupation (6.58E6 m2y).

Regional Electricity Generation Mix

PJM Interconnection is an independent system operator/ regional transmission organization (ISO/RTO) that coordinates the movement of wholesale electricity in all or parts of 13 states and the District of Columbia. Among these areas covered includes New Jersey, Virginia, and Maryland which are all a part of the modelled regional supply chain described in the following section. We assume the electricity associated with assembly, installation, and disassembly draws upon the PJM Interconnection electricity generation mix, creating a custom process in SimaPro to reflect regionality (Table 1) (PJM.com, 2024).

Table 1. PJM electricity generation mix

Traditional Sources	Percentage	Renewable Sources	Percentage
Natural gas	47.02%	Hydro	1.42%
Nuclear	29.44%	Wind	6.33%
Coal	9.64%	Solar	4.16%
Oil	0.32%	Other renewable	0.57%
Multiple fuel	1.10%		

Transportation from Supplier to New Jersey Wind Port

The offshore wind energy industry in the US is gaining momentum, and in order to be viable both in terms of timeline and finances there needs to be a domestic supply chain. While this supply chain is not fully developed, there are several announced and planned supply chain manufacturing facilities as outlined in the NREL’s Supply Chain Road Map (Shields et al., 2023), which is the basis for our supply chain transportation model (Table 2).

Table 2. Announced domestic supply chain located near New Jersey



Location	Approximate distance in inland waterways	Approximate total distance to New Jersey Wind Port	Supply component
Portsmouth Marine Terminal, Virginia	14 km	338.52 km	Rotor, Generator, Blades
Tradepoint Atlantic and vicinity, Maryland	290 km	612.78 km	Cables
Port of Paulsboro, New Jersey	58.08 km	58.08 km	Tower, Monopile
New Jersey Wind Port, New Jersey		1 km	Nacelle

210

The New Jersey Wind Port, is set to be located on the eastern shore of the Delaware River in Lower Alloways Creek, New Jersey. The Wind Port will be the first of its kind in the US, a hub-style marshalling and manufacturing port that will serve wind project in New Jersey and along the US East Coast. The Wind Port will be developed in two phases, 1) a 30-acre marshalling port targeted for completion in 2024; 2) 35 additional acres of marshalling space, enabling two projects to marshal concurrently, and 60-70 acres of space developed for supply chain manufacturers (i.e. Tier 1 components such as nacelles). Transportation of the parts produced at the Wind Port uses the largest capacity freight transport lorry available in Ecoinvent, size class >32 metric tons gross vehicle weight which already includes fuel consumption; we assume 1 km of travel as an estimate for on-site movement. Transportation of the parts produced in the three other locations to the Wind Port uses the freight carrier with a 50,000 load capacity to best represent a transport barge, a large flat-bottomed vessel used to transport materials from the port, through inland waterways, and out to the point of installation. A towing tugboat is needed to tow large vessels safely in and out of inland waterways to/from the New Jersey Wind Port. With no representative vessel available in the Ecoinvent database, we calculated the diesel needed to operate a tugboat estimated at about 150 gallons per hour (WeeksMarine, 2024). Distance was estimated using GoogleEarth measurement tool (Google LLC, accessed March 2025). Based on the carrying capacity of the barge, the weight of each supply component, distance from each port to the New Jersey Wind Port, and assuming the tugboat would travel at a speed of 8 knots per hour, we calculated 18,185 gallons or 58.5 tons of diesel fuel consumed round trip. The equipment that would be needed to load and unload the material is outside of the system boundary.

**Transportation from New Jersey Wind Port to Offshore Wind Farm**

The total distance travelled from Wind Port to the offshore wind site is estimated at 210 km, with the first 50 km requiring tugboat assistance within inland waterways estimated using GoogleEarth measurement tool (Google LLC, accessed March 2025). Like the previous section, we chose the same freight carrier with a 50,000 ton load capacity, and calculated the diesel needed to operate a tugboat for approximately 5 hours each direction, consuming 1500 gallons or 4.8 tons of diesel fuel each trip. Due to the load capacity of the transport barge, this would require 8 trips total.

**Installation**

Installation of the offshore wind farm requires several pieces of specialized equipment, including heavy lift vessels, jack-up vessels, dredgers, and service vessels for the crew and operators. While the vessels are not represented in this analysis, fuel consumption of the vessels is included.

240

The heavy lift vessel is equipped with heavy equipment like specialized cranes needed to move the materials from the barge to the point of installation (consumes 14 tons of diesel fuel per day). The jack-up vessel is a barge with legs that can create a stable platform above the water, used for drilling, dredging, and wind turbine installation (consumes 14 tons/day) (Fred Olsen Windcarrier, 2019). The dredger (18 tons/day) is equipped with excavation tools to remove sediment from the seabed for cable laying, and the fall pipe vessel (14 tons/day) is used to move cement or rocks to bury the cables after they are installed (De Cuyper et al., 2021; Van Oord 2021). For each of these vessels, a towing tugboat (5.2 tons/day) would be needed to navigate narrower waters (70km) (WeeksMarine, 2024). Service operation vessels (9 tons/day) are used to provide safe extended housing for crew during periods of construction and maintenance (WeeksMarine, 2024). Assuming a 2-year construction period, these vessels would consume about 55,000 tons of diesel fuel combined. Not included, is the use of helicopters during installation, maintenance, and disassembly, which in some cases are necessary to support transporting and hoisting personnel and equipment to save time especially during challenging weather conditions.

245

250

**2.3.3 Operation and maintenance**

Offshore wind farms require corrective, preventative, and predictive maintenance in order to efficiently operate and maintain the machines and their wearable parts. Both South and North parts of the Atlantic Shore Project will be designed to operate autonomously without on-site technicians, and equipped with supervisory control systems and monitoring sensors to interface between the various components of the site. These remote-control systems are outside of the scope of this work. This LCA assumes regularly scheduled annual maintenance, and no unscheduled maintenance, where crew will inspect, test, replace consumable materials, and complete any preventative maintenance needed. This will include the use of a service operation vessel, and the replacement of lubricating oil for each turbine. We assume that all wearable parts require no material replacement (e.g. blade removal and replacement) as they are built to last the full 25 year lifetime.

255

260

**2.3.4 Dismantling, transportation, and end-of-life**

This process represents the removal of all property and restoration of the leased area on termination of the lease as per the lease agreement. Dismantling the offshore wind turbines is modelled using the same inputs as the “Assembly, transportation, and installation” with a few exceptions. Transportation from New Jersey Wind Port to supplier is not included, land transformation is from seabed infrastructure to unspecified, and land occupation is to sea and ocean.

265

This process also includes material end-of-life after it has been disassembled, following the method of Brussa, et al 2023. Metals (steel, aluminium, copper, and iron) are 90% recycled and 10% landfilled. High recycling rates in industry standards are supported by established recycling infrastructures with high recovery rates (IEA.org, 2021). The recycling process used is an empty process with no emissions or waste to avoid double counting; however, recycling tends to be an energy-intensive process and should be further explored in future research to better assess environmental trade-offs (Brussa et al., 2023; International EPD® System, 2021). Glass from the turbine blades and plastics from several components are 100% incinerated. Electronics and cables are 100% treated and disposed, and lubricating oil is 100% treated as hazardous waste and incinerated.

**2.4 Comparison analysis**

The US EIA estimated the resulting CO<sub>2</sub> emissions by fuel source, including petroleum (1.08 kg CO<sub>2</sub> per kWh), coal (1.04 kg CO<sub>2</sub> per kWh), and natural gas (0.44 kg CO<sub>2</sub> per kWh). Further, because the US operates on a diverse electricity generation mix, including 21% of electricity produced from renewable sources, the same report estimates that the nation’s grid produced 0.39 kg CO<sub>2</sub> eq per kWh of electricity produced in 2022 (EIA.gov, 2022). To further assess the performance of the offshore wind farm, we compare the model to conventional and renewable electricity generation sources currently used by PJM Interconnection (Table 1). The selected Ecoinvent processes are listed in the Supplementary Materials (Table S7).

**3 Results and Discussion**

**3.1 Life cycle impact assessment**

To calculate the environmental impact of Atlantic Shores South, we included the turbine and power transmission materials, transportation from domestic suppliers to the New Jersey Wind Port, transportation to the offshore wind farm area, assembly and installation of the turbines and cables, annual operation and maintenance, disassembly, and end-of-life waste treatment. The model assumes having 105 fixed monopile turbines (15 MW) connected through inter-array cables and linked to two offshore substations, where export cables run to the shoreline where they connect to the onshore substation, with a 25 year operational lifetime. The impacts across each midpoint and endpoint category per the functional unit of 1 kWh of wind energy power produced are shared in the Supplementary Material (Table S8).

The results of the impact assessment display the emissions produced by the offshore wind farm per 1 kWh of wind energy power produced. Across several midpoint impact categories, the tower and monopile account for the largest percentage of impact, primarily due to the large amount of steel (Figure 3). The overall global warming impact of 1.27E-02 kilograms carbon dioxide equivalent (kg CO<sub>2</sub> eq) is substantial, with 36.9% coming from the tower and monopile. Steel production is known to have a significant environmental impact, accounting for approximately 9% of global greenhouse gas emissions. The coke ovens used for steel production are also associated with high air pollution, releasing emissions such as naphthalene and sulfur during the cooking process. Steel production also produces substantial wastewater; the overall water consumption is estimated

at 4.73E-04 cubic meters (m3), with 24.3% coming from the tower and monopile process. The steel process used in this study is produced by basic oxygen furnace, which is highly carbon intensive and relies on substantial amounts of water for cooling and emissions control. However, the more common method of steel production in the US is by electric arc furnace (EAF), which has a lower environmental impact due to its greater use of steel scrap and less water consumption (American Iron and Steel Institute, 2023). Future work modelling the EAF steel production pathway is likely to present lower emissions and a more accurate outlook on a fully domestic supply chain.

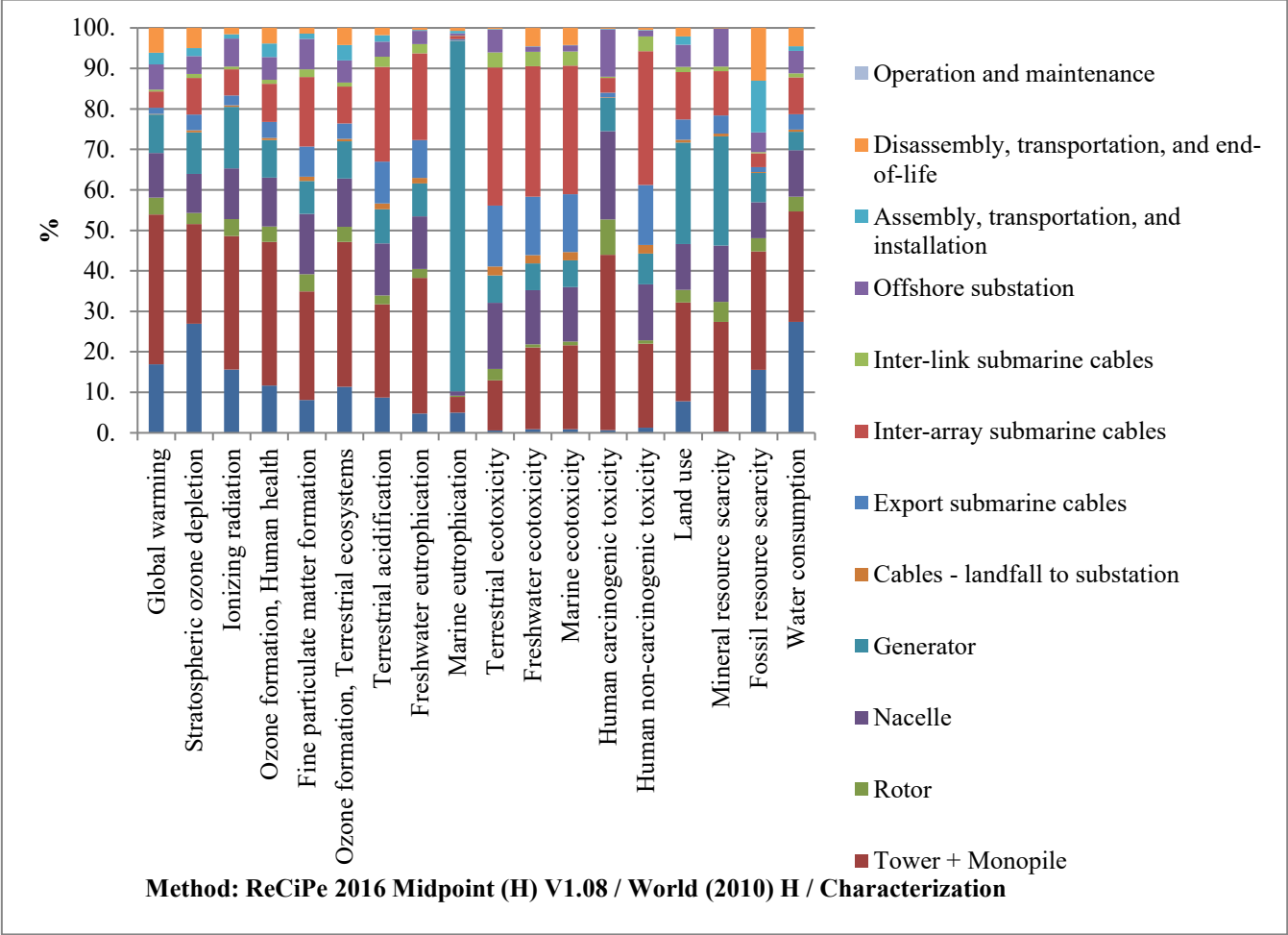


Figure 3. Life Cycle Impact Assessment – Midpoint Results

While CO<sub>2</sub> is the most commonly reported emissions, it is often not the most important in terms of environmental and human health impact. Normalization of the data allows the impact category indicator results to be compared to a reference (normal) value (Normalization scores ReCiPe 2016, 2020). This allows for perspective of priority areas across the several impact categories. With normalization, we see that human carcinogenic toxicity is by far the highest concern, with an overall impact

of 4.50E-01 kg 1,4-dichlorobenzene (1,4-DCB). Again, we see that the tower and monopile process are the largest contributors at 12.4%. Other notable contributors include the nacelle (16.4%) and offshore substation (5.6%) due to their large amount of steel. Freshwater (9.71E-06 kg 1,4-DCB), marine (5.00E-06 kg 1,4-DCB), and terrestrial (8.11E-05 kg 1,4-DCB) ecotoxicity are also shown to have substantial impact compared to the other categories. While the tower and monopile process is a major contributor, the inter-array submarine cables show the highest impact across each of these categories, at 32.2%, 31.8% and 34.1% respectively. Notably, across several impact categories “Operation and maintenance” has a relatively low impact. This model is limited to annual transport of lubricating oil during scheduled maintenance. Unscheduled and emergency maintenance, and replacement of turbine components could greatly change the impact of this category. Allekotte and Garrett (2024) found that when doubling replacement parts, the impact on all categories increased in the range of 0.2-2.1%.

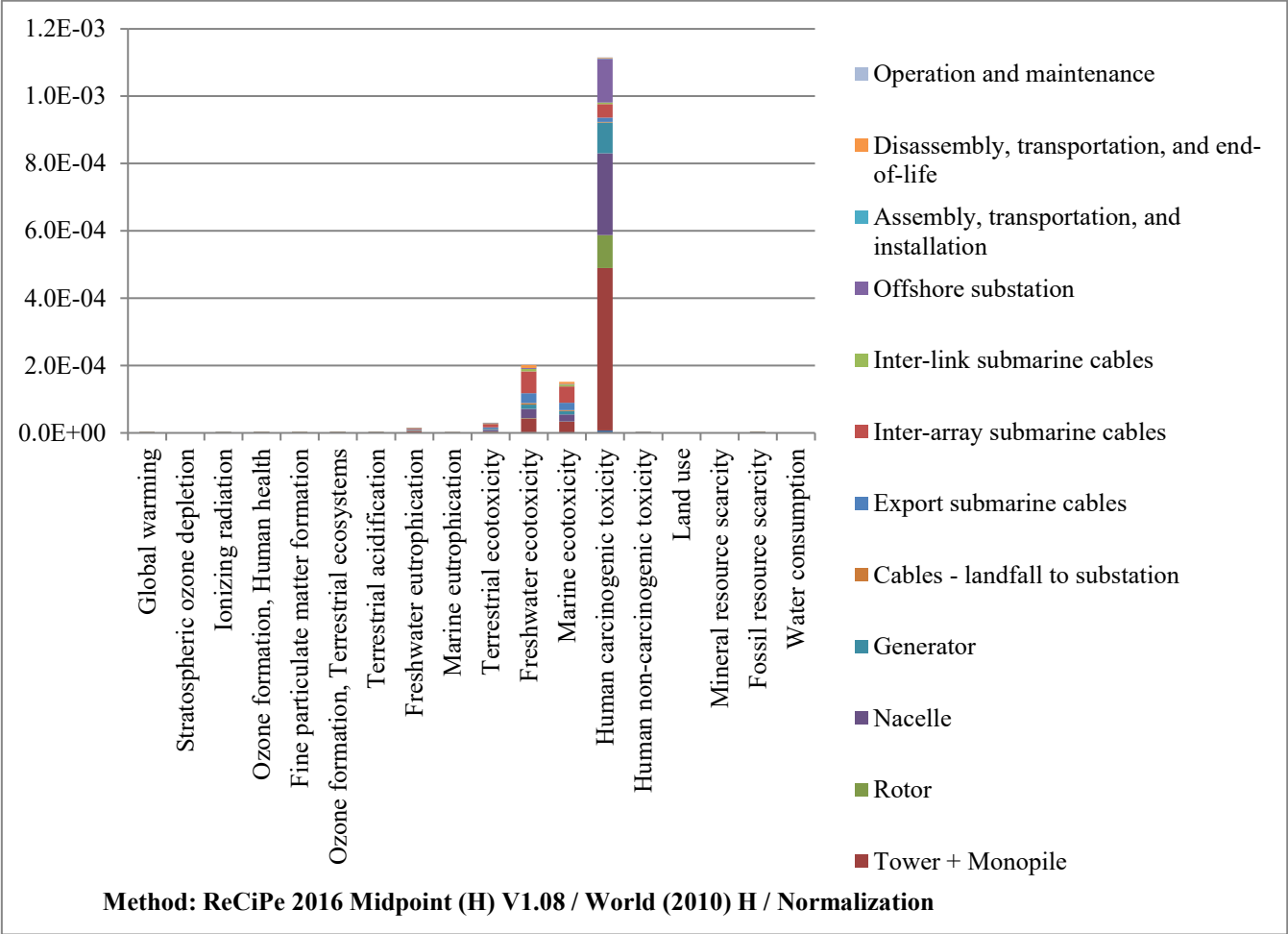


Figure 4. Life Cycle Impact Assessment – Midpoint Results with Normalization

325 The endpoint approach further aggregates the emissions data into three impact categories: human health, ecosystems, and  
resources (Huijbregts et al., 2017). The overall human health impact is 9.04E-08 disability adjusted life-years (DALY), with  
the tower and monopile having the largest contribution at 33.8%. The overall ecosystem impact is 7.86E-11 species per year  
(species.yr), with the tower and monopile having the largest contribution at 30.0%. The overall resource impact is \$0.001  
(USD-2013), with the tower and monopile having the largest contribution at 21.6%; though notably assembly and disassembly  
330 supply chain would yield even higher impacts, making a case for a domestic supply chain as well as exploration into alternative  
fuel use.

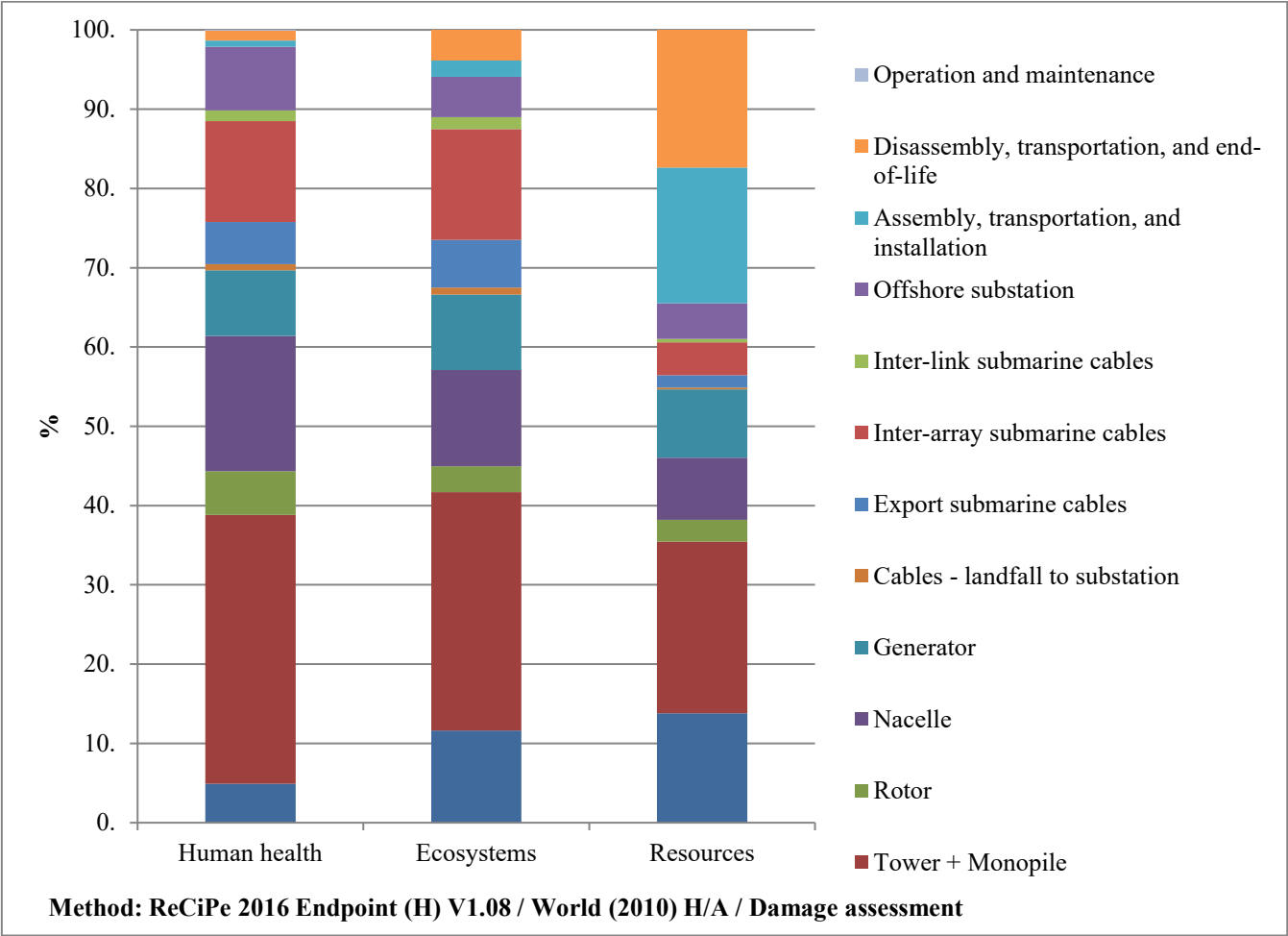


Figure 5. Life Cycle Impact Assessment – Endpoint Results

The normalization factors used for ReCiPe 2016 endpoint method will always prioritize human health, as seen in the normalization of the data (Figure 6). While fuel consumption and the associated emissions is a key area of concern in regards to sustainability metrics, we see that steel must be prioritized in light of a growing domestic supply chain.

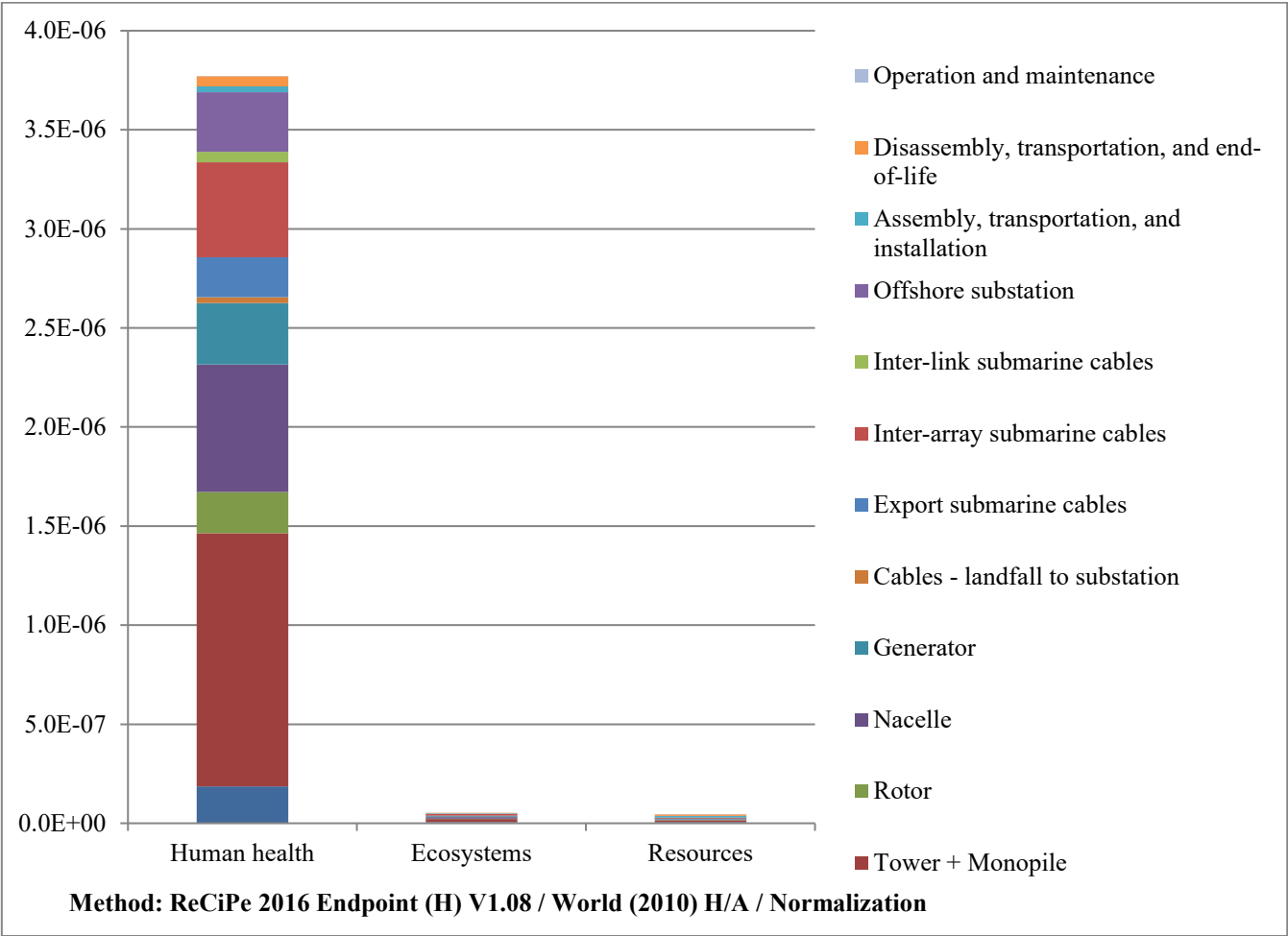


Figure 6. Life Cycle Impact Assessment – Endpoint Results with Normalization

The results from this study shows similar distribution trends compared to prior offshore wind based LCA studies. Two studies have used the IEA reference turbine as the basis for their LCA model; however, the system boundaries are not directly comparable. Brussa et al. (2023) estimated 0.31 kg CO<sub>2</sub> eq per kWh for a 190 turbine farm off Italy’s coast; while this is substantially higher than our model’s estimate, this study used floating foundations which require even more steel for the floating substructure and mooring system. Moussavi et al. (2023) reports that 62% of CO<sub>2</sub> emissions are associated with the tower, offshore substation and cables, the most steel intensive categories which mirrors our findings of about 50%, and when

including the nacelle, generator, and rotor which were excluded from their report rises to about 74%. Because this study  
350 reported their normalized values, we are unable to directly compare results. While several other studies have evaluated offshore  
wind, the turbine power rating is significantly lower such that results cannot be directly compared.

**3.2 Comparison analysis**

Continuing the push for electricity generation from renewable sources is key to reducing this number as a nation, and offshore  
wind allows New Jersey, a small state with high energy needs, to participate in improving national carbon emissions. Using  
355 Ecoinvent process data, we evaluated the performance of electricity generation sources used by the PJM Interconnection  
electricity generation mix across impact categories beyond global warming potential, separated for ease of visualization by  
conventional (Figure 7) and renewable (Figure 8) sources of electricity generation. The full results of the analysis are shared  
in the Supplementary Material (Table S9).

360 The CO<sub>2</sub> emissions from the fossil fuel sources estimated by the EIA were somewhat different at 2.05 kg CO<sub>2</sub> eq (oil), 1.02 kg  
CO<sub>2</sub> eq (coal), and 0.62 kg CO<sub>2</sub> eq (natural gas); without full details of the EIA estimation process it is difficult to know why  
the estimations for oil/petroleum differ. We expand our analysis to include nuclear (pressurized water reactor [PWR] and  
boiling water reactor [BWR]), and we see that these two approaches tend to outperform offshore wind in terms of CO<sub>2</sub>  
emissions. While these are clean electricity technologies, there other impacts such as ionizing radiation highlight the risk of  
365 relying on nuclear for a clean energy transition. Other considerations beyond the scope of this research, such as ecosystem  
concerns related to nuclear waste, may be better estimated through other environmental impact assessment methods. Compared  
to conventional sources, we see that offshore wind performs very well across most environmental impact categories. Results  
confirm, however, that the impact of offshore wind to freshwater, marine, and human carcinogenic toxicity categories remains  
a concern compared to several conventional methods of electricity generation with the exception of coal and oil. We also see  
370 the impact on mineral resource scarcity remains relatively high compared to coal and natural gas. Each of these is related to  
the large amount of steel needed for the turbines, highlighting the importance of identifying alternative materials for these  
massive structures.

When analysing the renewable electricity generation sources, we see that in terms of CO<sub>2</sub> eq, offshore wind outperforms solar  
375 and onshore wind by 78.7% and 42.8%, respectively. Hydroelectricity outperforms offshore wind by 63.8% (run of river) and  
44.3% (pumped reservoir) depending on the method. The only impact categories where offshore wind performs the worst is  
marine eutrophication, reflecting the relative location of these compared technologies, and human carcinogenic toxicity,  
reflecting the mass amounts of steel and copper needed to connect the turbines to the grid. Notably, offshore wind performs  
worse compared to hydro energy (both river and reservoir methods) across all impact categories with the exception of water  
380 consumption. However, the effect of hydroelectric dams on water quality and habitat destruction should not be considered  
lightly; while the chemical emissions are considered in this analysis the broader impact of these emissions may be better



calculated using alternate environmental impact assessment methods. Further, hydroelectric dams can only be utilized in certain geographies; while New Jersey has several hydroelectric dams in operation possibilities of expansion in this sector are minimal given land limitations.

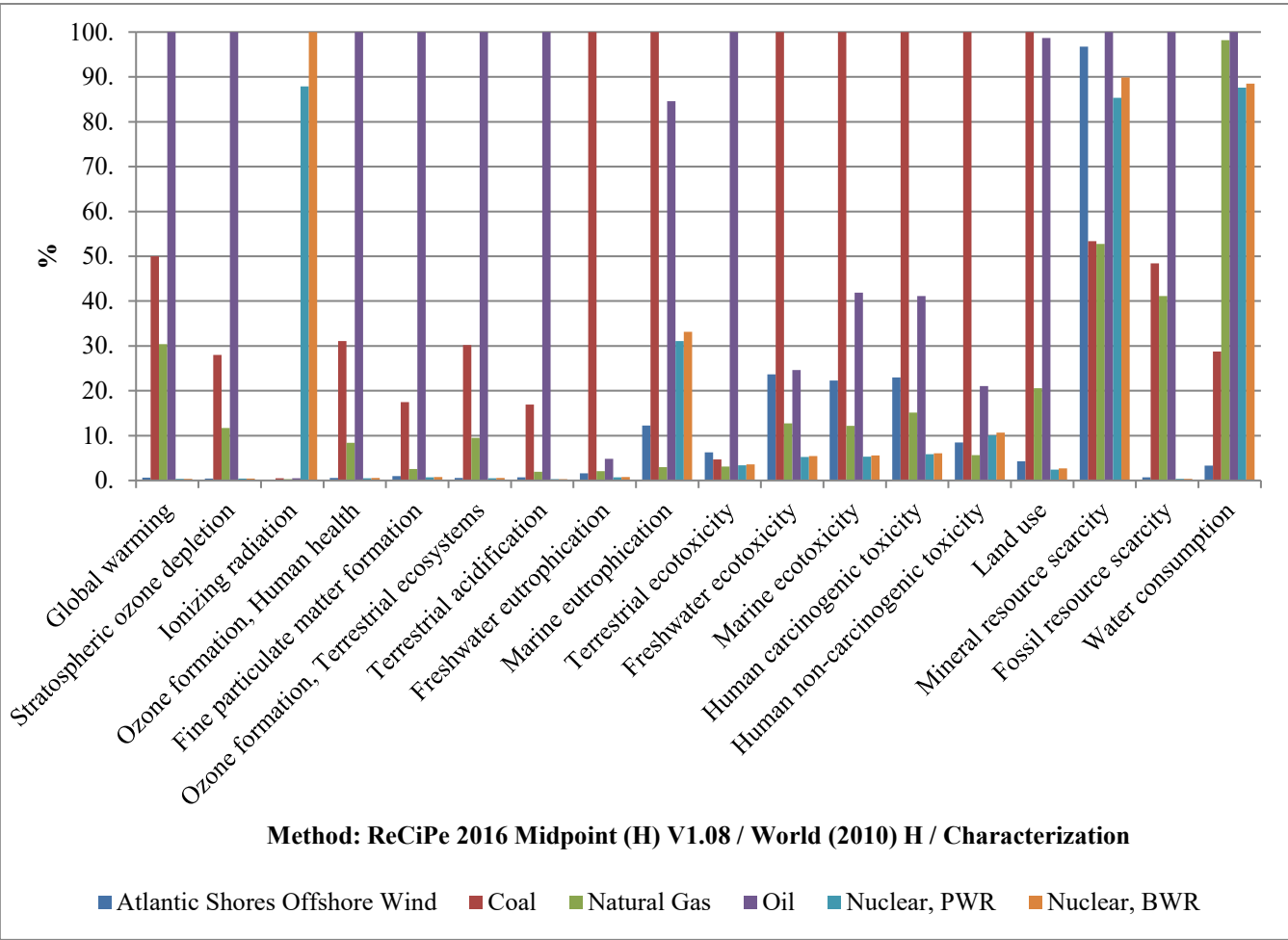
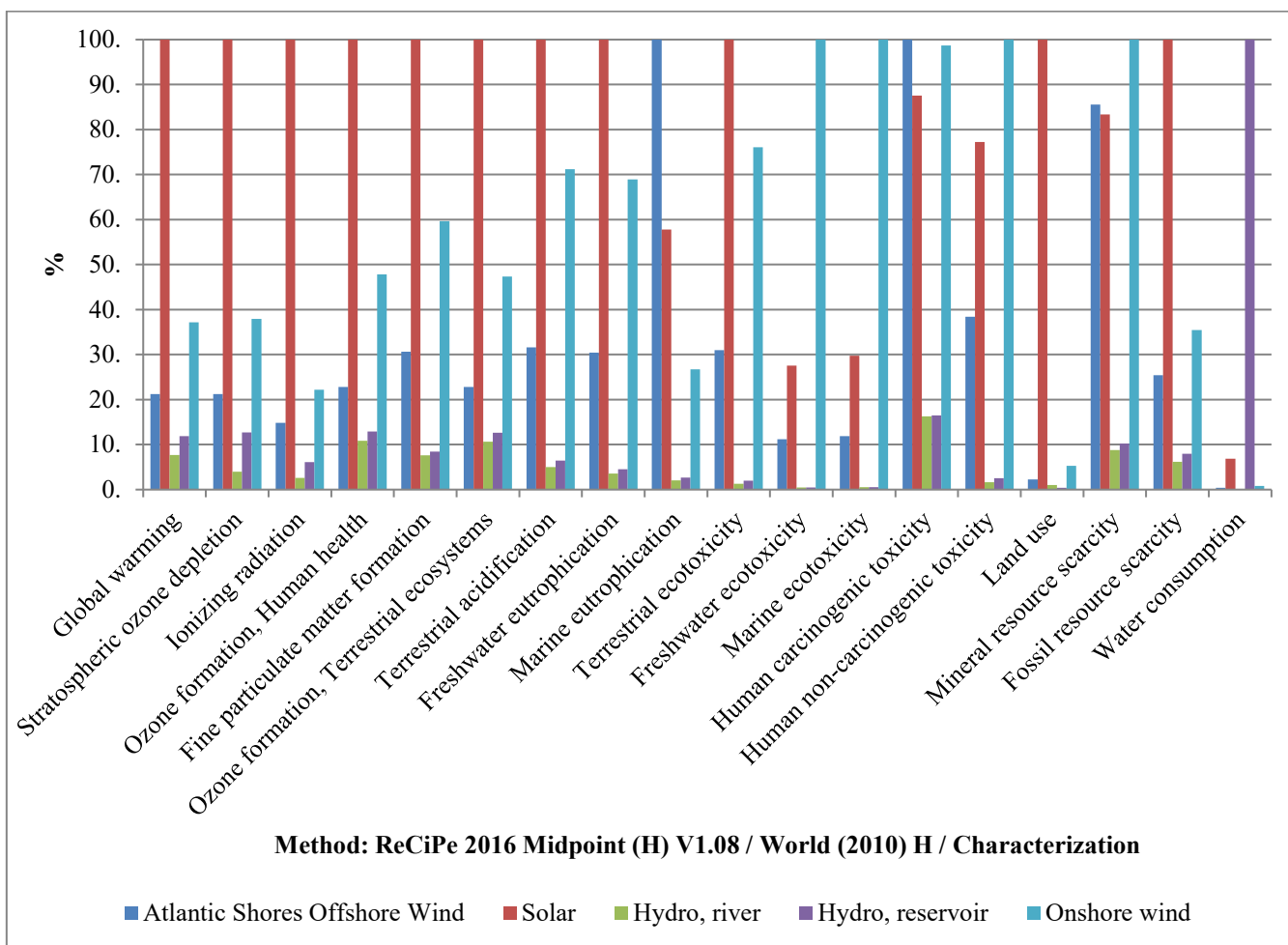


Figure 7. Comparison of offshore wind to conventional electricity generation technologies



**Figure 8. Comparison of offshore wind to renewable electricity generation technologies**

## 4 Conclusions

This LCA of Atlantic Shores South offshore wind project off New Jersey's coastline provides a detailed analysis of the environmental impacts associated with offshore wind energy production in the context of a developing US supply chain.

Further, we compare these results to other electricity generation sources including traditional (oil, coal, natural gas, nuclear) and renewable (solar, hydro, onshore wind) technologies. Findings suggest that while offshore wind offers a substantial reduction in greenhouse gas emissions relative to fossil fuels, there are considerable environmental impacts associated with the steel-intensive construction materials and transportation of those materials, particularly within the Scope 3 emissions profile. Scope 3 emissions, which include indirect emissions from upstream activities such as material production and transport, are found to be a major contributor to the projects total environmental impact. Steel manufacturing, in particular, poses substantial challenges for sustainable offshore wind development due to its high emissions intensity and toxicity impacts

on human health and ecosystems. When we consider performance of offshore wind to other renewable energy technologies, we observe that in general offshore wind is a good option, particularly in the context of New Jersey which has ample coastline access and limited available land space for expansion of other electricity generation options. This research provides  
405 quantitative data that can guide regulatory frameworks, incentive structures, and investment decisions that prioritize both emission reductions and sustainable industry development. By aligning with other renewable technologies' performance, this research also contributes to broader energy transition planning, supporting evidence-based policies that promote the most environmentally and economically viable solutions for the US energy grid.

410 A lack of a domestic supply chain is a large, well-known barrier to US offshore wind development. The emissions associated with transportation of turbine components overseas highlight the ineffectiveness of utilizing offshore wind as a means to decarbonize the electricity generation sector. Implementing a more localized supply chain would not only reduce transportation-related emissions but also foster greater energy security and economic benefits within the region. This study contributes a crucial baseline for future US east coast offshore wind LCA models, and emphasizes the importance of regional  
415 context in sustainability metrics. New Jersey's offshore wind developments offer a promising step toward renewable energy transition, provided that the challenges of supply chain sustainability and resource management are effectively addressed.

Future research should explore the aspects of offshore wind farms that are outside of the scope of this study. For example, the offshore substation contains substantial materials beyond steel, such as transformers, high voltage equipment, power control  
420 systems, and communication equipment, which could have a significant environmental impact relative to the total offshore wind farm. Future research can explore the potential impacts of a decarbonized steel sector, assessing how a transition to low-carbon steel production would alter the environmental footprint of offshore wind projects. Further modelling efforts could also assess the use of innovative materials, such as composite or recycled materials, and their feasibility within offshore wind applications. By investigating alternative materials, future work could identify best management practices within the offshore  
425 wind sector as it continues to develop its domestic supply chain, ensuring that as a nation we are providing a strong foundation for a sustainable offshore wind sector.

### **Data availability**

Data for this study is available in the Supplementary Material.

**Author contribution**

430 MS contributed to the conceptualization, methodology, project administration, formal analysis, validation, and writing – original draft preparation. NS contributed to the conceptualization, methodology, formal analysis, and writing – review & editing. PL contributed to the conceptualization, funding acquisition, supervision, and writing – review & editing.

**Competing Interests**

The authors declare that they have no conflict of interest.

435 **Acknowledgement**

The authors are grateful for funding from the Clean Energy and Sustainability Analytics Center at Montclair State University. Any opinion, findings, conclusions, or recommendations expressed in this material are those of the authors and do not necessarily reflect the views of the Clean Energy and Sustainability Analytics Center at Montclair State University.

**References**

440 Allekotte, L, Garrett, P. Life Cycle Assessment of electricity production from an offshore V236-15 MW<sup>TM</sup> wind plant. Vestas, version 1.1, 2024.

American Iron and Steel Institute. Steel Profile. [https://www.steel.org/wp-content/uploads/2024/01/AISI-Profile-Book\\_updated-3.2023.pdf](https://www.steel.org/wp-content/uploads/2024/01/AISI-Profile-Book_updated-3.2023.pdf), last access 35 March 2025, 2023.

445

Atlantic Shores Offshore Wind. Appendix I-G: Submarine export and onshore interconnection cable routes determination. [https://www.boem.gov/sites/default/files/documents/renewable-energy/state-activities/2024-05-01\\_App%20I-G\\_SubmarineExportOnshoreInterconnectionCableRoutesSummary\\_REDACTED.pdf](https://www.boem.gov/sites/default/files/documents/renewable-energy/state-activities/2024-05-01_App%20I-G_SubmarineExportOnshoreInterconnectionCableRoutesSummary_REDACTED.pdf), 2024.

450 Brussa, G., Grosso, M., & Rigamonti, L. Life cycle assessment of a floating offshore wind farm in Italy. Sustainable Production and Consumption, 134, 134-144. <https://doi.org/10.1016/j.spc.2023.05.006>, 2023.

Burger, B., & Bauer, C. Ecoinvent 3.8 dataset documentation “wind power plant construction, 2MW, offshore, fixed parts – GLO”. 2007.

455

- U.S. Energy Information Administration. New Jersey state energy profile. <https://www.eia.gov/state/print.php?sid=NJ>, last access 18 July 2024.
- Fred. Olsen Windcarrier. Bold Tern. [www.windcarrier.com/fleet/bold-tern](http://www.windcarrier.com/fleet/bold-tern), last access: 30 September 2024, 2019.
- 460 Gaertner, E., Rinker, J., Sethuraman, L., Zahle, F., Anderson, B., Barter, G., Abbas, N., Meng, F., Bortolotti, P., Skrzypinski, W., Scott, G., Feil, R., Bredmose, H., Dykes, K., Shields, M., Allen, C., Viselli, A. Definition of the IEA 15-megawatt offshore reference wind. Golden, CO: National Renewable Energy Laboratory. <https://www.nrel.gov/docs/fy20osti/75698.pdf>, 2020.
- Goedkoop, M., Heijungs, R., Huijbregts, M.A.I., De Schryver, A., Struijs, J., & van Zelm, R. ReCiPe 2008: A life cycle impact assessment method which comprises harmonized category indicators at the midpoint and endpoint levels. First edition. Report i: characterization. The Netherlands: Ruimte en Milieu, Ministerie van Volkshuisvesting, Ruimtelijke Ordening en Milieubeheer, 2009.
- 465 Google LLC. (n.d.). Google Earth: Measurement tool. <https://earth.google.com>, last access 18 July 2024.
- Hernando, D.M., Musial, W., Duffy, P., & Shields, M. Summary analysis of different offshore wind capacity density drivers in proposed U.S. projects and impacts on progress towards state and federal deployment targets. Presentation for NAWEA/WindTech 2023 Conference, 2023.
- 470 Huijbregts, M.A.J., Steinmann, Z.J.N., Elshout, P.M.F., Stam, G., Verones, F., Vieira, M., Zijp, M., Hollander, A., & van Zelm, R. ReCiPe2016: A harmonized life cycle impact assessment method at midpoint and endpoint level. The International Journal of Life Cycle Assessment, 22(1), 138-147. <https://link.springer.com/article/10.1007/s11367-016-1246-y>, 2016.
- International Energy Agency. End-of-life recycling rates for selected metals. Available at: <https://prod.iea.org/data-and-statistics/charts/end-of-life-recycling-rates-for-selected-metals>, 2021.
- 480 International EPD ® System. General Programme Instructions for the International EPD ® System Version 4.0, 2021.
- ISO 14040:2006. Environmental management: Life cycle assessment. Principles and framework. Retrieved from <https://www.iso.org/standard/37456.html>, 2006.
- 485 ISO 14044:2006. Environmental management: Life cycle assessment. Requirements and guidelines. <https://www.iso.org/standard/38498.html>, 2006.

- 490 Liu, P., Barlow, C.Y. Wind turbine blade waste in 2050. *Waste Management*, 62 (2017), pp. 229-240, 2017.
- Majewski, P., Florin, N., Jit, J., Stewart, R.A. End-of-life policy considerations for wind turbine blades. *Renewable and Sustainable Energy Reviews*, 164, 122538, 2022.
- 495 Moussavi, S., Barutha, P., & Dvorak, B. Environmental life cycle assessment of a novel offshore wind energy design project: A United States-based case study. *Renewable and Sustainable Energy Reviews*, 185, 113643. <https://doi.org/10.1016/j.rser.2023.113643>. 2023.
- National Offshore Wind Research and Development Consortium. Announces offshore wind supply chain roadmap project  
500 [Press release], 2021.
- New Jersey Executive Order No. 92. Governor Murphy signs executive order to increase offshore wind goal to 7,500 megawatts by 2035, 2019.
- 505 New Jersey Executive Order No. 307. Governor Murphy signs executive order to increase offshore wind goal to 11,000 megawatts by 2040, 2022.
- Official Site of the State of New Jersey. NJ Energy, climate, and environment work. <https://nj.gov/governor/climateaction/work/>, 2024.  
510
- OpenAI. ChatGPT [Large language model]. <https://chat.openai.com/chat>, 2023.
- PJM Markets & Operations. Generation fuel mix. <https://www.pjm.com/markets-and-operations.aspx>, last access: 30  
515 September 2024.
- Raadal, H.L., Vold, B.I., Myhr, A., & Nygaard, T.A. GHG emissions and energy performance of offshore wind power. *Renewable Energy*, 66, 475-486. <https://doi.org/10.1016/j.renene.2013.11.075>, 2014.
- ReCiPe 2016 normalization scores. <https://www.rivm.nl/en/life-cycle-assessment-lca/downloads>, n.d.  
520
- Shields, M., Marsh, R., Stefek, J., Oteri, F., Gould, R., Rouxel, N., Diaz, K., Molinero, J., Moser, A., Malvik, C., Tirone, S. The demand for a domestic offshore wind supply chain. Golden, CO: National Renewable Energy Laboratory. <https://www.nrel.gov/docs/fy22osti/81602.pdf>, 2022.

525 Shields, M., Stefek, J., Oteri, F., Maniak, A., Kreider, M., Gill, E., Gould, R., Malvik, C., Tirone, S., & Hines, E. A supply chain road map for offshore wind energy in the United States. Golden, CO: National Renewable Energy Laboratory. <https://www.nrel.gov/docs/fy23osti/84710.pdf>, 2023.

SimaPro Software, Version 9.5.0.2. Pre Sustainability, 1990-2023.

530

Smith, M., Bevacqua, A., Tembe, S., & Lal, P. Life cycle analysis (LCA) of residential ground source heat pump systems: A comparative analysis of energy efficiency in New Jersey. Sustainable Energy Technologies and Assessments, 47, 101364. <https://doi.org/10.1016/j.seta.2021.101364>, 2021.

535 The Greenhouse Gas Protocol. A corporate accounting and reporting standard. <https://ghgprotocol.org/sites/default/files/standards/ghg-protocol-revised.pdf>, 2004.

The Greenhouse Gas Protocol. Corporate value chain (Scope 3) accounting and reporting standard. [https://ghgprotocol.org/sites/default/files/standards/Corporate-Value-Chain-Accounting-Reporting-Standard-](https://ghgprotocol.org/sites/default/files/standards/Corporate-Value-Chain-Accounting-Reporting-Standard-EReader_041613_0.pdf)

540 [EReader\\_041613\\_0.pdf](https://ghgprotocol.org/sites/default/files/standards/Corporate-Value-Chain-Accounting-Reporting-Standard-EReader_041613_0.pdf), 2011.

The Greenhouse Gas Protocol. corporate accounting and reporting standard. <https://ghgprotocol.org/sites/default/files/standards/ghg-protocol-revised.pdf>, 2015.

545 The White House. FACT SHEET: Biden Administration jumpstarts offshore wind energy projects to create jobs. <https://www.whitehouse.gov/briefing-room/statements-releases/2021/03/29/fact-sheet-biden-administration-jumpstarts-offshore-wind-energy-projects-to-create-jobs>, 2021.

U.S. Department of Energy. State of New Jersey energy sector risk profile. [https://www.energy.gov/sites/prod/files/2016/09/f33/NJ\\_Energy%20Sector%20Risk%20Profile.pdf](https://www.energy.gov/sites/prod/files/2016/09/f33/NJ_Energy%20Sector%20Risk%20Profile.pdf), 2016.

U.S. Department of Energy. Advancing offshore wind energy in the United States: U.S. Department of Energy strategic contributions toward 30 gigawatts and beyond. <https://www.energy.gov/sites/default/files/2023-03/advancing-offshore-wind-energy-full-report.pdf>, 2022.

555

U.S. Energy Information Administration. Off Shore Wind Speed 90m (NREL), [https://atlas.eia.gov/datasets/ddc4fbd89b54d63b24ad2f841bflf86\\_0/about](https://atlas.eia.gov/datasets/ddc4fbd89b54d63b24ad2f841bflf86_0/about), last access: 25 March 2025, 2021.

Van Oord. Flexible fallpipe vessel, Nordnes. [https://www.vanoord.com/drupal/media/data/default/2021-07/leaflet\\_nordness\\_2021\\_a42\\_lr.pdf?](https://www.vanoord.com/drupal/media/data/default/2021-07/leaflet_nordness_2021_a42_lr.pdf?), last access: 18 July 2024, 2021.

Weinzettel, J., Reenaas, M., Solli, C., & Hertwich, E.G. Life cycle assessment of a floating offshore wind turbine. *Renewable Energy*, 34(3), 742-747. <https://doi.org/10.1016/j.renene.2008.04.004>. 2009.

Weeks Marine. Equipment. <https://www.weeksmarine.com/equipment/>, last access: 18 July 2024, n.d..