

A parcel-level evaluation of distributed wind opportunity in the contiguous United States

Jane Lockshin¹, Paula Pérez¹, Slater Podgorny¹, Michaela Sizemore¹, Paritosh Das¹, Jeffrey D. Laurence-Chasen¹, Paul Crook¹, and Caleb Phillips¹

¹National Renewable Energy Laboratory, Golden, Colorado, USA

Correspondence to: Jane Lockshin (jane.lockshin@nrel.gov)

Abstract. This study examines the potential for distributed wind (DW) energy across the contiguous United States, leveraging advancements in the National Renewable Energy Laboratory's distributed wind model, dWind. The novel modeling approach described here utilizes a high-resolution dataset and analyzes over 150 million parcels, a significant improvement from prior methods that extrapolated results from a smaller random sample. This achievement is enabled through key model performance improvements, such as transitioning to ~~multiparallel~~ processing, which reduces runtime by 97 %. This optimized, high-resolution approach allows the inspection of technology deployment potential and impact on a variety of scales tailored to individual properties and regions. The results here align with prior work showing substantial opportunity for energy generation using DW technologies. Key findings reveal a substantial increase from prior results in estimated technical and economic potential for DW. Metrics tuned to highlight economic potential also show increased incentives supporting rural adoption. Results are spatially aggregated for usability and published via the U.S. Department of Energy Wind Data Portal and a custom scenario visualization platform, aiding policymakers, industry, and property owners in assessing DW viability across various scenarios and spatial scales.

1 Introduction and Background

Distributed energy resources (DERs) offer localized energy solutions tailored to communities, individuals, and regions. Within the wind energy sector, distributed wind (DW) encompasses turbines ranging from 10 to ~~86~~0 m in height, ideal for diverse settings such as homes, farms, industries, and campuses. The scale and distribution of opportunity to broadly deploy these systems are questions that have been entertained by researchers for some time and are of critical importance for assessing how DW systems should fit into our nation's plans for a transitioning energy supply. Despite the inherent challenge, accurate estimates of technical and techno-economic potential provide significant value to (1) policymakers so they can understand how best to design incentives and devote resources; (2) industry, so they can design a marketization strategy that is aligned with opportunity; and (3) property owners, who may wish to understand whether their property is suitable for wind energy generation. Each of these groups is interested in different quantities and data at different spatial

scales, which necessitates a high-resolution modeling approach that can produce technical and economic metrics across a variety of scales.

~~Meanwhile, the landscape of energy generation in the United States is changing, and ambitious goals have been set to adopt renewable sources and broad electrification—elected officials and federal agencies have targeted a 100 % clean electricity sector by 2035, and a net zero carbon economy by 2050 (The White House, 2024; DOE, 2023). By all accounts, meeting these goals requires an “all of the above” approach, and distributed generation, including DW, is a necessary component of the solution.~~ DW systems are especially valuable as they can produce energy near the point of consumption, be sized proportionally to demand, and reduce transmission losses while increasing overall grid resilience (Rickerson et al., 2024). DW can be integrated into behind-the-meter (BTM) setups, where it directly supplements an end user's electricity consumption by generating power on-site using net metering or similar policies; it primarily caters to rural or suburban settings such as homes, farms, and manufacturing sites. Alternatively, DW can be utilized in front-of-the-meter (FOM) configurations, where it connects to the distribution network and sells energy via power purchase agreements or is managed by a local utility. Such projects strategically reinforce the local distribution network's strength, reliability, and resilience, alleviating transmission congestion (McDermott et al., 2022). They may also address the energy needs of specific communities or municipalities. Front-of-the-meter setups often involve multiple wind turbines, each exceeding 100 kW in size, with many reaching or exceeding 1 MW in capacity.

While still relatively nascent in terms of national adoption, DW shows significant opportunity for growth. The 2024 DW market report describes a total of 1,110 MW of installed capacity from more than 92,000 wind turbines, with 1,999 newly installed turbines in 2023 (Sheridan et al., 2024). BTM systems are currently much more common, accounting for 89 % of installed capacity compared to 11 % for grid-tied FOM systems. To incentivize adoption, significant tax incentives and rebates are available through programs such as the U.S. Department of Agriculture's (USDA's) Rural Energy for America Program (REAP) or similar state-level programs. In 2024, these programs were ballasted with supplemental investment from the Rural and Agricultural Income and Savings from Renewable Energy (RAISE) initiative, which makes additional funds available to agricultural or rural entities considering DW installation. Given the strong growth trend in both adoption and incentives, detailed data describing the scale and spatiotemporal distribution of opportunity are critical to guide and target investments.

This study builds on prior work conducted by National Renewable Energy Laboratory (NREL) researchers in 2016 and 2022 (Lantz et. al., 2016; McCabe et. al., 2022). Like those studies, we utilize and improve upon NREL's distributed wind model, dWind (Sigrin et al., 2016) to estimate technical and economic potential. We leverage a detailed parcel-level dataset for the contiguous United States (CONUS) and in doing so improve upon prior studies' results that depended on broad extrapolations from a sampled subset of parcels. This study is the first of its kind to perform an exhaustive analysis of all 150+ million parcels in CONUS. The improved spatial accuracy of this approach ensures better estimates of technical and economic distributed wind potential by analyzing granular information and capturing local variations rather than broad approximations.

2 Methods

70 2.1 Overview of modeling process

The dWind model is a component of NREL's Distributed Generation Market Demand (dGen™) modeling suite, designed to assess the diffusion of distributed generation technologies. With its focus on distributed wind, dWind evaluates various factors such as resource availability, economic viability, site suitability, electricity demand, and policy landscapes for millions of potential distributed wind sites across the nation. It provides a consistent framework for understanding and
75 characterizing potential future scenarios based on modeled inputs, although its results are not intended as forecasts.

The capabilities of the dGen and dWind models encompass agent-based modeling and geospatial analysis, capturing essential variables relevant to DERs and distributed energy technologies. Here, "agents" represent typical customers, and each agent corresponds to a single land-ownership parcel. While future versions of the model may allow interaction between agents in decision making, the current model treats each customer decision separately insofar as a parcel is evaluated for
80 suitability of DW, both from the standpoint of practical deployment concerns and economic feasibility. By leveraging these data, the models estimate both the technical and economic potential of DER systems, simulating millions of scenarios across CONUS.

The modeling process involves five key steps adapted from Sigrin et al. (2016):

1. Generating representative agents (customers) and assessing their potential for DERs, considering electricity demand
85 and relevant policies.
2. Applying siting restrictions to determine feasible system sizes for each agent.
3. Conducting economic assessments through discounted cash flow analysis, accounting for incentives and revenue streams.
4. Estimating market share based on assumed technology adoption trends.
- 90 5. Generating output data and results, presenting system sizes, types, locations, and other pertinent parameters.

This study primarily focuses on Steps 1, 2, 3, and 5 to analyze the technical and economic potential of distributed wind energy technologies. Step 4, which considers adoption rates, is beyond the scope of this analysis, though it is planned for future work. Compared to previous studies (Lantz et al., 2016; McCabe et al., 2022), our efforts to enhance model performance, particularly enabling full-parcel analyses, have concentrated on refining Steps 1 and 2 by “decoupling”
95 computationally heavy processes from the dWind model to allow for faster model runs. These processes include the

generation of parcel-level agents (along with parcel-level system siting and sizing) and running the Renewable Energy Potential (reV) model for parcel-level system generation profiles and annual energy production (Maclaurin et al., 2019; Buster et al., 2023).

100 An illustration of the model workflow is included in Figure 1~~Fig. 1~~. As shown in this figure, separate model components
calculate different metrics throughout the model pipeline: the agent generation process sites and sizes systems to determine
parcel-level technical potential, the reV model calculates annual energy production according to wind resource, and the
dWind model assesses parcel-level economic potential according to local energy demand and system costs.~~calculation of~~
~~economic generation potential at a given site involves three main phases corresponding to agent generation and technical~~
105 ~~potential calculation, inclusion of the wind resource to calculate estimated annual energy production, and the consideration~~
~~of local energy demand and system costs to determine the techno-economic subset.~~ Table 1~~Table 1~~ provides a detailed
summary of the data utilized at each step of the modeling process described in Figure 1~~Fig. 1~~. All data sources and vintages
have remained consistent with the prior study except for U.S. Census boundary definitions (as new data from 2010 to 2020
have become available) and utility boundaries (as updated 2020 definitions have become available).
110 ~~In several cases these data have been updated relative to those data used in prior studies, as new data have become available.~~

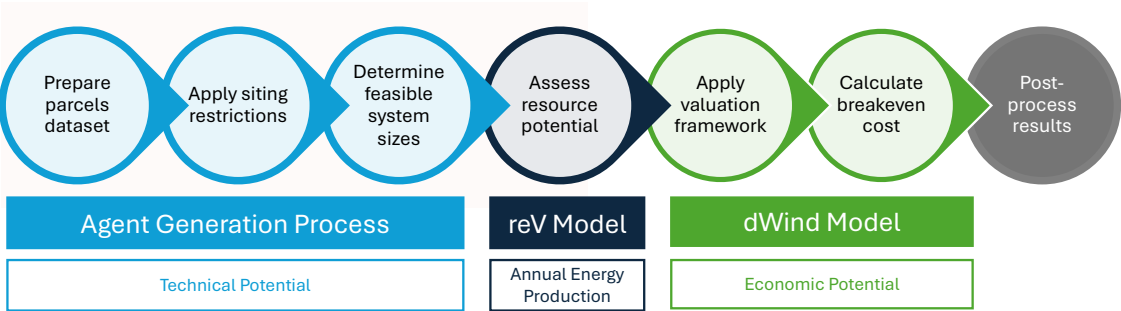


Figure 1: The modeling workflow illustrating the “decoupling” of the model components and their resulting metrics.

Table 1: Datasets used in this study.

Dataset	Description	Source
U.S. properties (parcels)	Defines parcel geometries, the basic spatial unit upon which we perform our analysis.	<u>HIFLD Licensed Data: LightBox Parcels, 2019, available at: https://www.lightboxre.com/data/LightBox-Parcels-2019, available at: https://www.lightboxre.com/data/.</u>
Building footprints	Shapes defining the presence and extent of buildings are used for excluding those areas from	Microsoft: U.S. Building Footprints, 2019, available at: <u>https://github.com/microsoft/USBuildingFootprints</u> .

	potential turbine placements.	
Counties, tracts, block groups, and blocks	Spatial designations are used to match parcel data to other datasets available at other spatial resolutions.	U.S. Census Bureau: TIGER/Line Shapefiles, U.S. Department of Commerce, 2020, available at: https://www.census.gov/geographies/mapping-files/time-series/geo/tiger-line-file.html .
Terrain (slope)	Areas with high slope are excluded from potential turbine placement.	NASA: Shuttle Radar Topography Mission, 2018, available at: https://eosps.nasa.gov/missions/shuttle-radar-topography-mission .
Canopy cover	Forested areas are excluded from potential turbine placement.	Multi-Resolution Land Characteristics Consortium (MRLC): NLCD Tree Canopy Cover (CONUS), 2011, available at https://mrlc.gov/data/nlcd-2011-tree-canopy-cover-conus .
Atmospheric model data (wind resource)	The Wind Integration National Dataset (WIND) Toolkit is a 7-year high-resolution (2 km spatially) atmospheric dataset commonly used for estimating wind resource.	NREL: WIND Toolkit, 2012, available at https://dx.doi.org/10.25984/1822195 .
Turbine power curves (energy production)	Reference turbine power curves <u>for residential, commercial, midsize, and large wind turbines are used to calculate annual and hourly estimates of turbine production given the available wind resource at a site and choice of turbine model.</u>	<u>NREL: Distributed Wind Energy Futures Study, 2022, available at https://www.nrel.gov/docs/fy22osti/82519.pdf, Section B.1.6: Power Curves.</u> NREL: The Renewable Energy Potential (reV) Model, 2018, available at https://doi.org/10.5281/zenodo.8247528.
<u>Energy production</u>	<u>The reV model uses the wind resource data and reference turbine power curves to calculate annual and hourly estimates of energy production at a site and choice of turbine model.</u>	<u>NREL: The Renewable Energy Potential (reV) Model, 2018, available at https://doi.org/10.5281/zenodo.8247528.</u>
Energy consumption from buildings	Hourly load profiles for commercial and residential buildings are used to size optimal behind-the-meter turbines to meet the end user's electricity demands.	NREL: Commercial and Residential Hourly Load Profiles for all TMY3 Locations in the United States, 2016, available at https://dx.doi.org/10.25984/1788456 .
Utility boundaries	Used to determine utility rates.	Ventyx Energy Velocity Suite, 2020, available at: https://www.hitachienergy.com/us/en/products-and-solutions/energy-portfolio-management/market-

		intelligence-services/velocity-suite .
Utility rates	Used to determine potential revenue generation for net metering.	NREL: Utility Rate Database (URDB), 2020, available at: https://openei.org/wiki/Utility_Rate_Database .
Net energy metering (NEM) policies	NEM policies (and their expirations) by state and utility are used to determine whether behind-the-meter systems are allowed by the utility or local regulations. The three options for metering and billing in the model include net energy metering; buy all, sell all; and net billing.	NC Clean Energy Technology Center: Database of State Incentives for Renewables & Efficiency (DSIRE), 2021, available at: https://www.dsireusa.org/ .
Future scenarios and expectations	Estimates for long-term utility prices, net metering, and loads are produced using the Cambium data tool.	NREL: Cambium Datasets and Regional Energy Deployment System (ReEDS™) Model, 2020, available at: https://scenarioviewer.nrel.gov/ .
RAISE-REAP ineligibility	Areas ineligible for incentives by the Rural and Agricultural Income and Savings from Renewable Energy (RAISE) initiative REAP (and RAISE) incentive programs are used in postprocessing to assess DW opportunity in rural and agricultural areas.	USDA: RAISEREAP, 20242023 , available at: https://eligibility.sc.egov.usda.gov/eligibility/ .
Agricultural areas	Areas identified as agricultural or rural are used in postprocessing modeling results to assess DW opportunity.	USDA National Agricultural Statistics Service (NASS): CroplandCROS (Cropland Data Layer), 2023, available at: https://croplandcros.scinet.usda.gov/

115 2.2 Performance improvements and parallel scaling

Various improvements to the dWind codebase were required to scale model runs for the full parcel dataset. The codebase from the prior version of the model had an average runtime of 7.8 s per parcel. For one million parcels (the number of parcels that were sampled in 2022), the total runtime of the model required 2,167 h to run (or 36 h while parallelized over 60 HPC nodes). If this version of the model was scaled to run the full parcel dataset (approximately 150 million parcels), it would take a total of 325,050 h (or 5,418 h parallelized over 60 nodes) to complete (which is equivalent to 226 *days*). Therefore, it was clear that the codebase needed to be updated to optimize performance so that the model runs could be scaled to handle a sample size approximately 150 times the size of the sample size of the previous runs from 2022.

125 The most significant change in the codebase to increase scalability was converting the model’s former use of
concurrency (or multithreading) into parallelism (or multiprocessing). Previously, at runtime, the model split the parcel-level
agents into a predetermined (and configurable) number of segments and ran the bulk of the code for each chunk through a
process called concurrency. Concurrency utilizes the threads within a Central Processing Unit (CPU) to manage many
processes at once (such as handling Input/Output-I/O operations) but is not equipped to execute many processes at once.
Therefore, parallelism, or multiprocessing, is more applicable to run the dWind model at scale. In multiprocessing,
processors within a system run in parallel to execute many computational tasks simultaneously, using one or more of the
130 processor’s threads (managed by the operating system rather than by the user). Converting the codebase’s previous
utilization of concurrency to multiprocessing reduced the average runtime per parcel from 7.8 s to 0.26 s, resulting in a 97 %
performance increase.

Additionally, the codebase of the model was parallelized to run simultaneously across multiple HPC nodes. In the
prior model version, each model run was parallelized across a maximum of 60 nodes for a runtime of roughly 36 h per
135 scenario. Running the new version of the model (with the full parcel dataset and code upgrades) across 60 nodes would take
approximately 180 h (or 7.5 days) per scenario; when taking into consideration the full suite of scenarios that were required
to run, waiting over a week per run is undesirable, despite the performance optimizations in the codebase. Therefore, the full
parcel dataset was split into eight groups, and the model was parallelized across 60 nodes for each group (resulting in a total
of 480 nodes per scenario). Using this grouping of the data, the full model runs to completion in less than one day (22.5 h)
140 per scenario. This accelerated runtime allowed for quick postprocessing and analysis of results as well as model
troubleshooting. Table 2 provides a summary of the runtime of the current model compared to the prior model,
demonstrating a 30x improvement in runtime.

Table 2: Comparison of model runtime of the prior dWind codebase with the updated and optimized codebase.

Codebase	Prior (7.8 s per parcel)			Current (0.26 s per parcel)		
Runtime	Total hours	Hours over 60 nodes	Hours over 480 nodes	Total hours	Hours over 60 nodes	Hours over 480 nodes
Random sub-sample (1 million parcels)	2,167	36	4.5	72	1	0.15
Exhaustive analysis (150 million parcels)	325,050	5,418	677	10,800	180	22.5

145

2.3 Generating parcel-level representative agents

To gather the necessary parcel-level information for the dWind model, parcels are extracted from the Lightbox dataset and, as highlighted in [Figure 2](#), spatially joined to various sources to derive parcel-level data such as energy load profiles, resource generation information, and utility rates. Building footprints from the Microsoft Buildings dataset are spatially intersected with parcels and removed from parcel geometries to produce a polygon that can be used for siting distributed wind technologies. Additionally, census block geometries are spatially joined with parcels to obtain various levels of census information (such as block groups and tracts) for each parcel. Using the mapping of parcels to census information as well as preprocessed mappings of census information to various datasets such as the WIND Toolkit and URDB, parcels are merged with wind generation profiles and utility rates.

Energy consumption is identified at the parcel level according to a mapping of building energy models to land use classifications (see Table A1 in the appendix for the full mapping of parcel land use classifications to building models). Using this mapping, along with the mapping of parcels to census block groups, the average annual load and hourly load profiles (available at the block group level) are retrieved for each parcel. The load data are then scaled according to building area (identified from the Microsoft Building footprint dataset along with the Lightbox parcel dataset) based on the reference floor area of the building models and their corresponding representative load profiles. Parcels are assigned an application designation of either “FOM” or “BTM”, or they may have a combined designation (“FOM, BTM”) when either application is viable for a parcel given its sector and land use categorization (the mapping of land use definitions to application is also highlighted in Table A1).

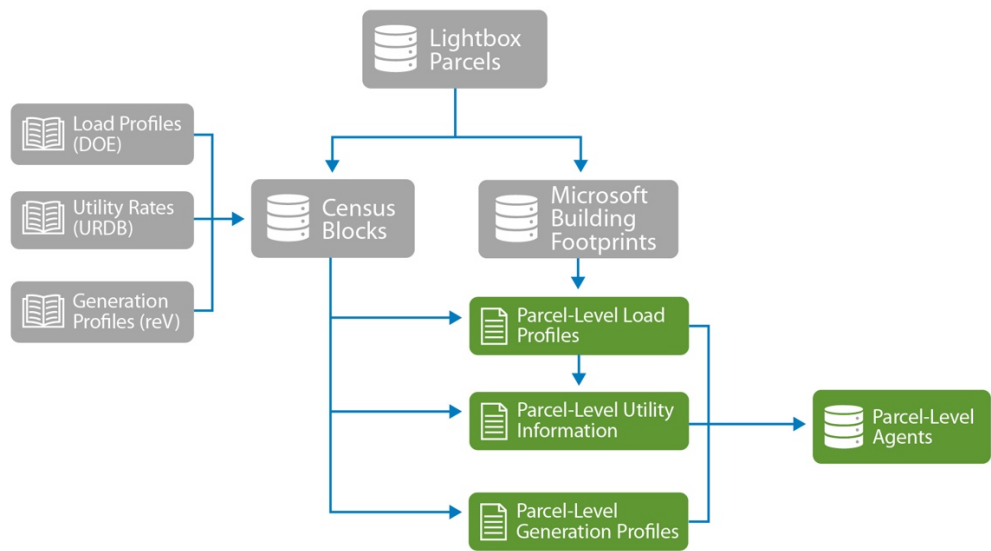


Figure 2: An illustration of the Agent Generation Data Pipeline. Parcels are joined to various data to generate parcel-level information regarding resource generation, energy consumption, and utility rates.

2.4 Modeling parcel-level technical potential

Technical potential describes the DW generation capacity that is technically feasible, with DW systems constrained solely by physical, land use, and siting exclusions. By definition, this potential corresponds to the nameplate capacity of the sited turbine and hence the maximum power output when running at rated capacity (peak power output). Only DW systems with a positive break-even cost (also understood as the “threshold CapEx” (where CapEx is capital expenditures) in McCabe et. al (2022)) are considered feasible within the technical potential aggregates by region or CONUS.

To estimate parcel-level technical potential, parcel boundaries are geospatially analyzed to allow for the siting and sizing of wind turbine technologies. As outlined in [Figure 3](#), exclusions are removed from parcels so systems are sited on applicable areas within a parcel. The geometries that are removed from the parcel boundaries include building footprints (from the Microsoft Building footprint dataset) and steep areas that have terrain with more than 20 % slope (using a digital elevation model of CONUS). Additionally, parcels with less than one acre (43,560 square feet) of land area and parcels with land use classifications that indicate physical, environmental, or cultural constraints are also excluded from siting wind technologies (see Table A2 for the full list of excluded land uses). To identify the largest possible area of land that can site a turbine, the biggest circle in the remaining parcel polygon is calculated by finding the point inside the polygon that is farthest from its edges, otherwise known as the pole of inaccessibility (Garcia-Castellanos and Lombardo, 2007).

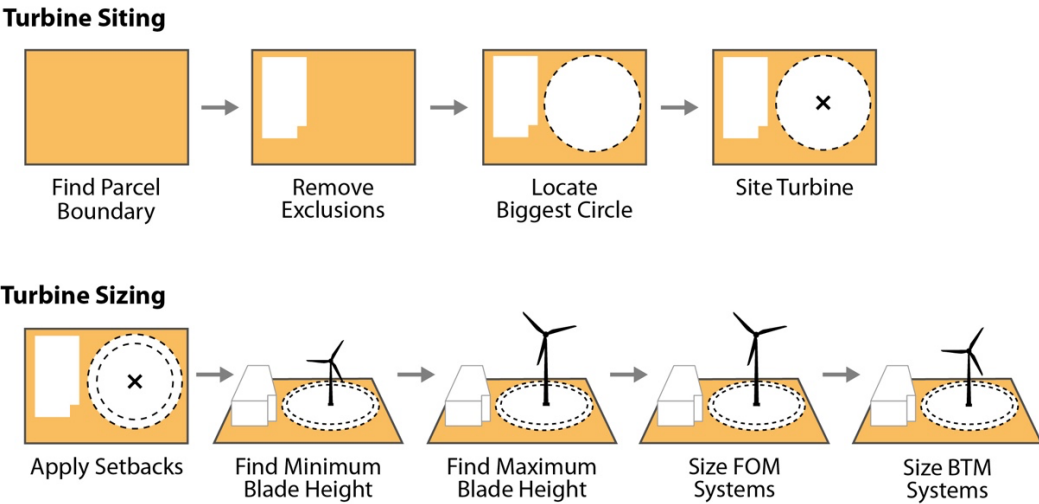


Figure 3: Geospatial workflow of turbine siting and sizing process within parcel boundaries.

Distributed wind systems are sized according to the minimum and maximum allowable turbine blade height in each parcel. The minimum blade height is determined from canopy coverage and canopy height information: if the canopy percent for a given census block group is greater than or equal to the required canopy clearance (set to 10 %), the minimum blade

height is set to the canopy height *plus* 12 m (the predefined static adder for canopy height). If the canopy percent for a given census block group is less than the required canopy clearance, the minimum allowable blade height is set to zero.:-

$$190 \quad \text{Blade Height}_{min} = \begin{cases} \text{canopy height} + 12 \text{ m} & \text{if canopy coverage (\%)} \geq 10 \\ 0 & \text{if canopy coverage} < 10 \end{cases} \quad (1)$$

The maximum blade height is calculated according to the available land area of a parcel; if the parcel area is greater than the maximum parcel size (defined as 1,000,000 acres), the maximum blade height is set to 100,000 m, and if the area of the parcel is less than or equal to the maximum parcel size, the maximum blade height is set to the radius of the biggest circle in the parcel *divided by* the blade height setback factor, predefined as 1.1 times the turbine height (Lopez et al., 2021; McCabe et. al., 2022).

$$195 \quad \text{Blade Height}_{max} = \begin{cases} 100,000 & \text{if parcel} > 1,000,000 \text{ acres} \\ \frac{\text{radius}}{1.1 \times \text{turbine height}} & \text{if parcel} \leq 1,000,000 \text{ acres} \end{cases} \quad (2)$$

Turbine systems are classified and sized according to the minimum and maximum allowable blade height requirements calculated for each parcel using the system configuration information in Table A3. FOM system sizes are assigned as the largest turbine available for a parcel. Lastly, parcels that do not site turbines (or have a determined system size of zero) were filtered from the model pipeline.

In order to better understand and visualize the potential for DW deployments in different U.S. environments, we selected three representative locales demonstrative of the diverse environments for potential DW opportunity in CONUS: Fort Collins, Colorado; Santa Maria, California; and Oak Ridge, Tennessee. Figure 4 provides a schematic view of ~~all~~ available land area at the parcel-level for potential deployments in these locations and ~~represents~~ typical of the typical distribution of opportunity ~~across~~ in urban, suburban, and rural landscapes. We can see from the figure that urban and suburban areas near city centers provide the greatest opportunity for smaller BTM deployments, while parcels existing outside of urban centers ~~near the boundaries of cities and in areas likely zoned for agriculture~~ show opportunity for both BTM and FOM deployments.

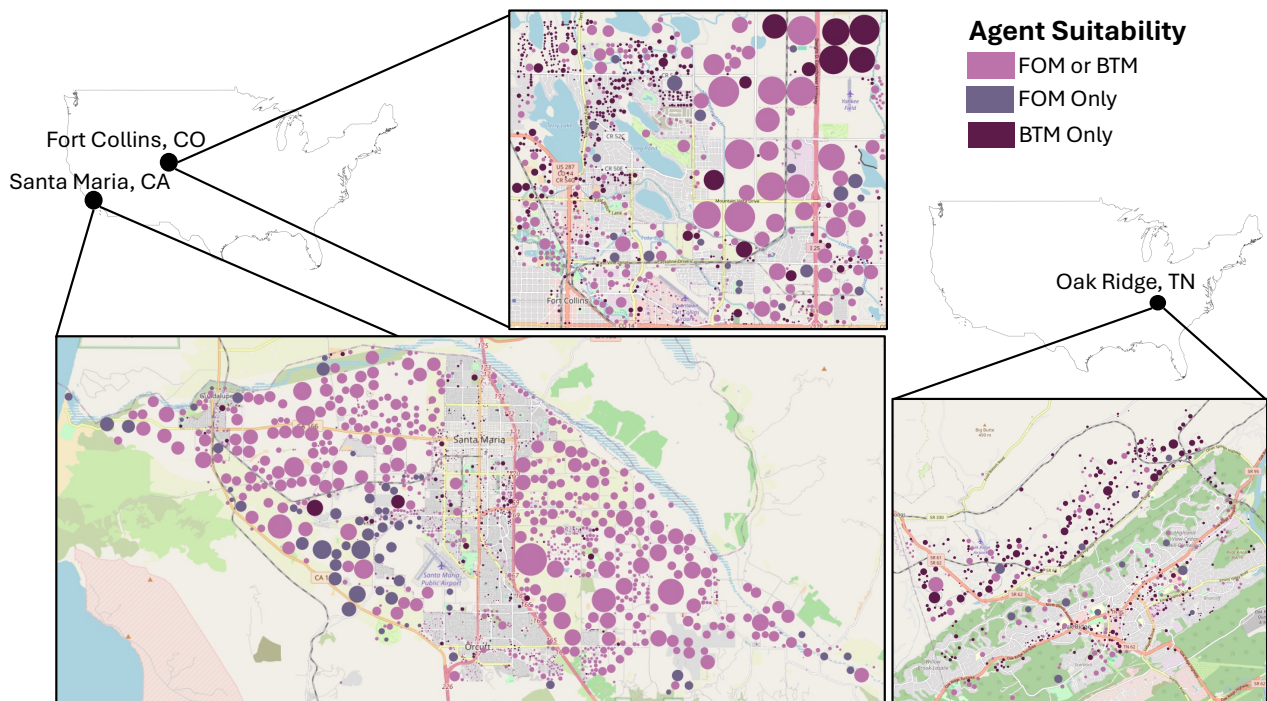


Figure 4: Visualization of DW opportunity in case study cities.

Table 3 provides a summary and comparison of the technical potential in these locales. In all three cities, the breakdown of agents by sector is roughly 56 % residential and 44 % commercial/industrial. These case studies highlight both the scale of opportunity and the diversity of potential deployment scenarios that may exist in practice.

Table 3: Summary of technical potential for case study cities.

Agent Subset	Fort Collins, CO		Santa Maria, CA		Oak Ridge, TN	
Application	Number of Agents	Technical Potential (MW)	Number of Agents	Technical Potential (MW)	Number of Agents	Technical Potential (MW)
FOM or BTM	351	144.74	822	474.12	68	3.63
FOM only	90	32.51	529	264.22	167	32.97
BTM only	510	49.95	385	37.12	353	29.90

2.4 Modeling annual energy production and economic potential

Annual energy production (AEP) is an indicator of potential energy generation for a system in an average year of operation. For DW systems, AEP is primarily based on a turbine's nameplate capacity, its capacity factor (influenced by system performance and local wind resource), and turbine availability (or how much downtime the system experiences). Using the

system sizes identified for each parcel, turbines are classified as one of the following: small residential (2.5 to 20 kW), small commercial (20 to 100 kW), midsize (100 to 1,000 kW), or large (1,000 to 1,500 kW). Using these turbine classifications and their corresponding wind performance metrics (McCabe et al., 2022), generation profiles were produced in a 2 km by 2 km grid across CONUS through the reV model. Parcel-level annual energy production and hourly resource generation profiles were derived using a spatial lookup of census block-level wind resource information to parcels.

This study evaluates parcel-level locations where distributed wind can be economically deployed and aggregates them by counties and states, identifying where distributed wind is best positioned to deliver low-cost electricity to consumers and communities. Economic potential reflects potential projects and their installed capacity that would provide a positive rate of return or, in other words, be profitable for the life of the facility. The economics for distributed wind are determined in dWind using discounted cash flow analysis to determine the profitability (e.g., the payback period, net present value, and monthly electricity bill savings) over the system’s lifetime. Table 4 provides the benchmark capital expenditure (\$/kW) values used as thresholds to determine economic viability in this study derived from the 2021 Cost of Wind Energy Review (Stehly and Duffy, 2021). This approach assumes that the DER value is created by reducing the electricity or fuel bills that the agent would have paid. Specifically, expenses include initial capital costs, such as the down payment and monthly loan/lease payments, and annual operation and maintenance requirements. Revenue includes energy bill savings, applicable financial incentives, and tax-based credits, such as depreciation and interest rate deductions.

Table 4. Benchmark capital expenditure values used to evaluate economic potential

Study Year	Behind the meter (\$/kW)	Front of the meter (\$/kW)
2022	\$5,675	\$1,608
2035	\$4,354	\$993

2.5 Modeling different scenarios

To align with prior results and allow comparability, we produce results for a Baseline 2022 scenario (i.e., “current”) and a Baseline 2035 scenario (i.e., “future”). Both scenarios utilize baseline cost and policy assumptions for their respective year (baseline projections used for Baseline 2035), and do not deviate from the assumptions detailed in McCabe et. al (2022). Keeping scenario assumptions equal allows for a comparison between the 2022 model results (referred to here as the prior model) and the updated 2024 model results (new model), while still offering practical insight into current and future opportunity. To create parcel-level representative agents for the complete Lightbox parcel dataset, agents were generated on a per-county basis using the data pipeline illustrated in [Figure 2](#) and then combined for national-level model runs. Since the agent generation process gathers all necessary data to run the model at the parcel level, the agent pipeline was decoupled from the dWind model so that dWind can seamlessly run valuation frameworks under different applications and scenarios by eliminating the need to generate new agents during model runtime.

We made several key changes to how the results are represented in this study as compared to its predecessor studies. First, we expanded our analysis to increase the granularity with which we present results for each application. While the prior study presented results for BTM and FOM together, without differentiating which parcels were designated as both applications (i.e., suitable for both FOM and BTM but would ultimately only have one sided), we also consider the subset of parcels where either one or two applications are suitable (see [Figure 5](#)). In doing so, we provide clarity on the extent of capacity that may be double-counted when looking at the two applications separately. Therefore, 60 % of parcels were identified as being applicable for FOM model runs (31 % FOM only plus 29 % FOM/BTM) and 69 % of parcels were identified as being applicable for BTM model runs (40 % BTM only and 29 % FOM/BTM).

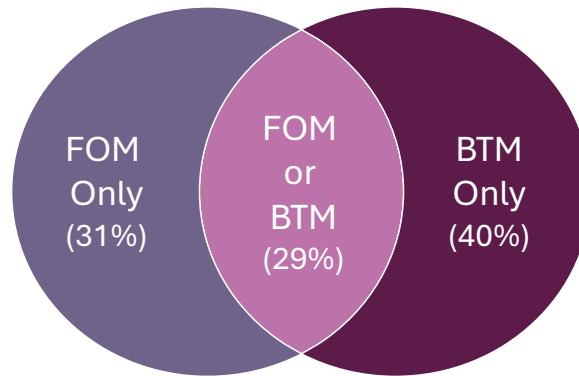


Figure 5: An overview of the overlapping designations of parcels.

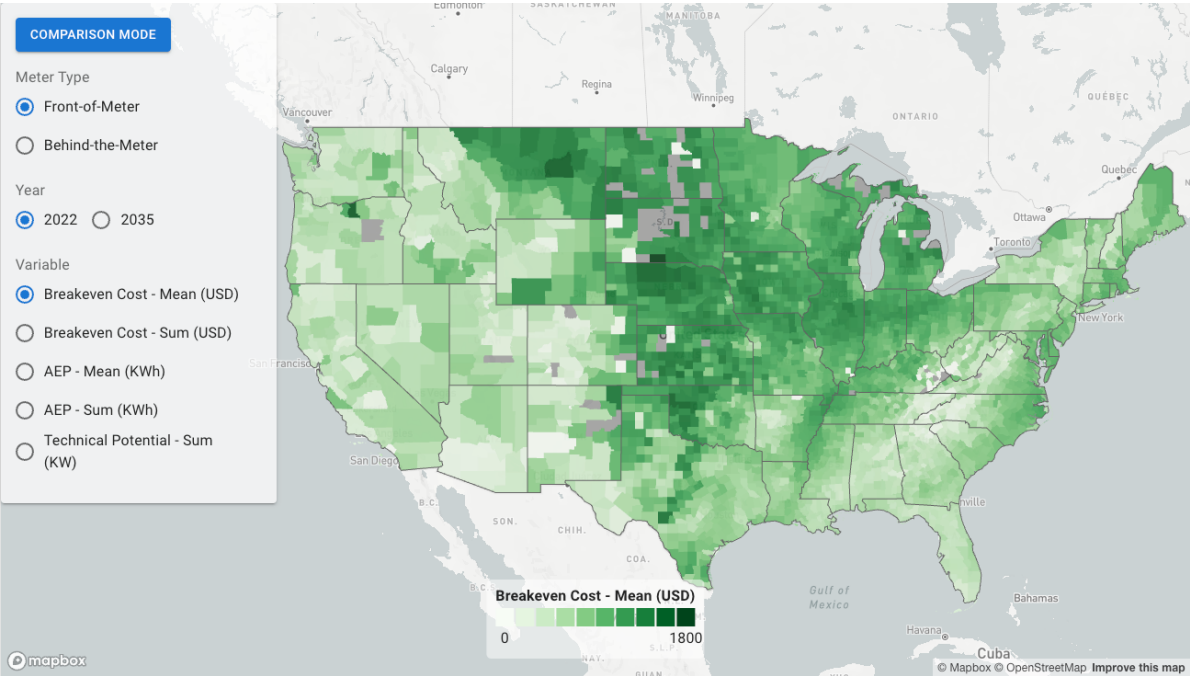
Second, we introduce the concept of “turbine downscaling” for BTM. The prior study considered the largest potential turbine in all scenarios, while we present results for this “largest” turbine scenario (termed “maximum potential”) alongside results where the turbine size is the largest turbine that would be needed to cover the energy demand of buildings on the same parcel (termed “minimum potential”). This minimum scenario describes a conservative situation wherein agents strictly avoid producing more energy than is locally needed. These two changes when taken together provide a more detailed and, we believe, realistic view of the landscape for DW opportunity.

2.6 Data aggregation and publication

In service of publishing the produced datasets so that others may use them, we make several spatial aggregations of the parcel-level data. We compute aggregate metrics at the county, ZIP code tabulation area (ZCTA), and U.S. census block group as well as along a 2 km gridded raster. These spatial aggregates are necessary to publish the data due to underlying data licensing restrictions for the input datasets. Additionally, the aggregated data can support visualization and are often easier to use by researchers and industry scientists when performing their own analyses. Due to the size of the data, this process is also performed on NREL’s high-performance computer. The process involves the calculation of zonal statistics for parcels that lie within each geography. We focus on key metrics (energy, power, break-even cost) and calculate mean,

median, interquartile range, minimum and maximum for each. Separate statistics are calculated for parcels with Net Present Value (NPV) greater than zero, and for cost-viable parcels where the break-even cost exceeds the benchmark capital expenditure. The resulting data are made available on the DOE Wind Data Portal (Phillips et al., 2024) in both GIS data
275 format (GeoPackage) and as text-encoded data without geometries (CSV).

To enable interactive exploration of the model outputs, we created a web-based visualization platform called the Distributed Wind Scenario Analyzer, or DWSA. The platform was built using the JavaScript library React and NREL’s HERO framework (hero.nrel.gov) and uses Uber’s deck.gl to visualize the data as interactive layers on a map. The DWSA can be accessed via dw.nrel.gov¹. Using the DWSA, a user can select a scenario by clicking the radio buttons in the control
280 panel on the left-hand side of the map window (Figure 6Fig-6). Available selections are meter type (e.g., FOM, BTM), year, and variable to visualize (e.g., break-even cost, technical potential). Any changes to scenario selection will immediately be reflected on the map, where region fill colors correspond to variable values on a linear color scale. Additionally, the spatial resolution of the data dynamically scales based on the current zoom level. At a countrywide zoom level (as in Figure 6Fig-
285 6), county-level resolution is displayed. As a user zooms in, the resolution will dynamically change to ZCTAs, and at maximum zoom levels, it will change to the parcel level. At all zoom levels, a user can hover their cursor over a region, and the value of the selected variable will be shown. If the user clicks on that region, a location information box will appear that contains detailed information about the selected county, ZCTA, or parcel, including and a link to additional information.



¹ Link forthcoming.

290

Figure 6: The Distributed Wind Scenario Analyzer facilitates exploration of model outputs and comparison of scenarios at multiple scales of resolution.

295

In addition to the default view “scenario mode”, the DWSA also provides a “comparison mode”, which can be toggled by clicking the button in the top left of the control panel. Comparison mode splits the map into two halves, where each half displays data from a specific scenario. The user can then update selections in the control panel to view different content side by side and drag a center divider to reveal more of less of a given scenario. By dragging across a region, visualizing differences between scenarios becomes intuitive and streamlined.

3 Results

300

In this section we provide the results for both FOM and BTM applications for the Baseline 2022 and Baseline 2035 scenarios, summarized and compared against prior results using the following metrics: technical potential (GW), AEP (TWh), and economic potential (GW). Additionally, opportunities for rural and agricultural parcels according to the new results are identified. Please note that while 29 % of parcels are suitable for both FOM and BTM applications, the maps presented for each scenario include these parcels with their respective metrics for the identified scenario (i.e., either FOM or BTM metrics).

3.1 Technical and economic potential

305

Table 5 provides a summary of national opportunity for DW, highlighting more than 8,600 GW of current FOM potential and 3,735 GW of BTM potential (103 GW with downsized turbines). Future (2035) scenarios show a slight decrease in opportunity owing to the sunseting of key policy incentives. Technical potential of both the Baseline 2022 and Baseline 2035 scenarios in the new results increased from the prior model results. Specifically, the technical potential of the Baseline 2022 scenario increased by 3,315 GW and the Baseline 2035 scenario increased by 3,694 GW, indicating an average of 1.8x the amount of technical potential previously reported. For BTM applications, our results show an average increase in technical potential of 2.1x from the prior model runs (for maximum potential): the Baseline 2022 technical potential increased by 1,988 GW and the Baseline 2035 technical potential increased by 1,994 GW. We believe this new result constitutes a more accurate and complete depiction of DW opportunity in CONUS and shows the substantial opportunity that exists nationally.

310

Table 5: Technical potential results comparison for current and future scenarios.

Parcel Applicability	% of Parcels	Technical Potential (GW)							
		Front-of-the-Meter (FOM)				Behind-the-Meter (BTM)			
		Baseline 2022		Baseline 2035		Baseline 2022		Baseline 2035	
		Prior Model	New Model	Prior Model	New Model	Prior Model	New Model	Prior Model	New Model

						Min.	Max.	Min.	Max.	Min.	Max.	Min.	Max.
All FOM/ All BTM	60 % / 69 %	5,380	8,695	4,102	7,796	61	1,747	103	3,735	61	1,749	104	3,743
FOM Only/ BTM Only	31 % / 40 %	<i>n/a</i>	6,801	<i>n/a</i>	6,142	<i>n/a</i>	<i>n/a</i>	59	1,661	<i>n/a</i>	<i>n/a</i>	59	1,664
Applicable to either FOM or BTM	29 %	<i>n/a</i>	1,894	<i>n/a</i>	1,654	<i>n/a</i>	<i>n/a</i>	44	2,074	<i>n/a</i>	<i>n/a</i>	45	2,079

315

Looking next to those parcels for which the available generation is also economically suitable, Table 6 provides a comparable summary. We see that with the described model improvements, the economic potential for FOM applications increased by 111 GW for the Baseline 2022 scenario but slightly decreased (by 9 GW) in the Baseline 2035 scenario. For BTM applications, however, economic potential of both the Baseline 2022 and Baseline 2035 scenarios in the new results increased significantly from prior model results (for maximum potential): the Baseline 2022 economic potential increased by 676 GW and the Baseline 2035 economic potential increased by 1,670 GW; this indicates an average increase in economic potential of 2.5x from what has been previously reported.

320

Table 6: Economic potential results from 2022 and 2024 models.

Parcel Applicability	% of Parcels	Economic Potential (GW)											
		Front-of-the-Meter (FOM)				Behind-the-Meter (BTM)							
		Baseline 2022		Baseline 2035		Baseline 2022				Baseline 2035			
		Prior Model	New Model	Prior Model	New Model	Prior Model		New Model		Prior Model		New Model	
						Min.	Max.	Min.	Max.	Min.	Max.	Min.	Max.
All FOM/ All BTM	60 % / 69 %	474	585	160	151	24	919	28	1,595	19	773	50	2,443
FOM Only/ BTM Only	31 % / 40 %	<i>n/a</i>	477	<i>n/a</i>	123	<i>n/a</i>	<i>n/a</i>	16	825	<i>n/a</i>	<i>n/a</i>	28	1,198
FOM & BTM	29 %	<i>n/a</i>	108	<i>n/a</i>	28	<i>n/a</i>	<i>n/a</i>	12	770	<i>n/a</i>	<i>n/a</i>	22	1,245

325

Figure 7 provides a graphical representation of the economic potential in CONUS. These figures show opportunity for both FOM and BTM in the Baseline 2022 (current) and Baseline 2035 (future) scenarios. The figures highlight the relatively large opportunity in the central “wind belt” along the U.S. Midwest, including counties in Texas, Oklahoma,

Nebraska, Montana, and Wyoming, in addition to parts of California and New England (e.g., Maine). Overall, there are substantially more counties that may benefit from BTM DW deployment when viewed in the context of economic constraints. Nonetheless, the economic potential of BTM parcels is highly dependent on whether the largest possible turbine is sited (which is generally the most economically favorable) or if the turbine is sized down to load (which is generally less favorable than FOM).

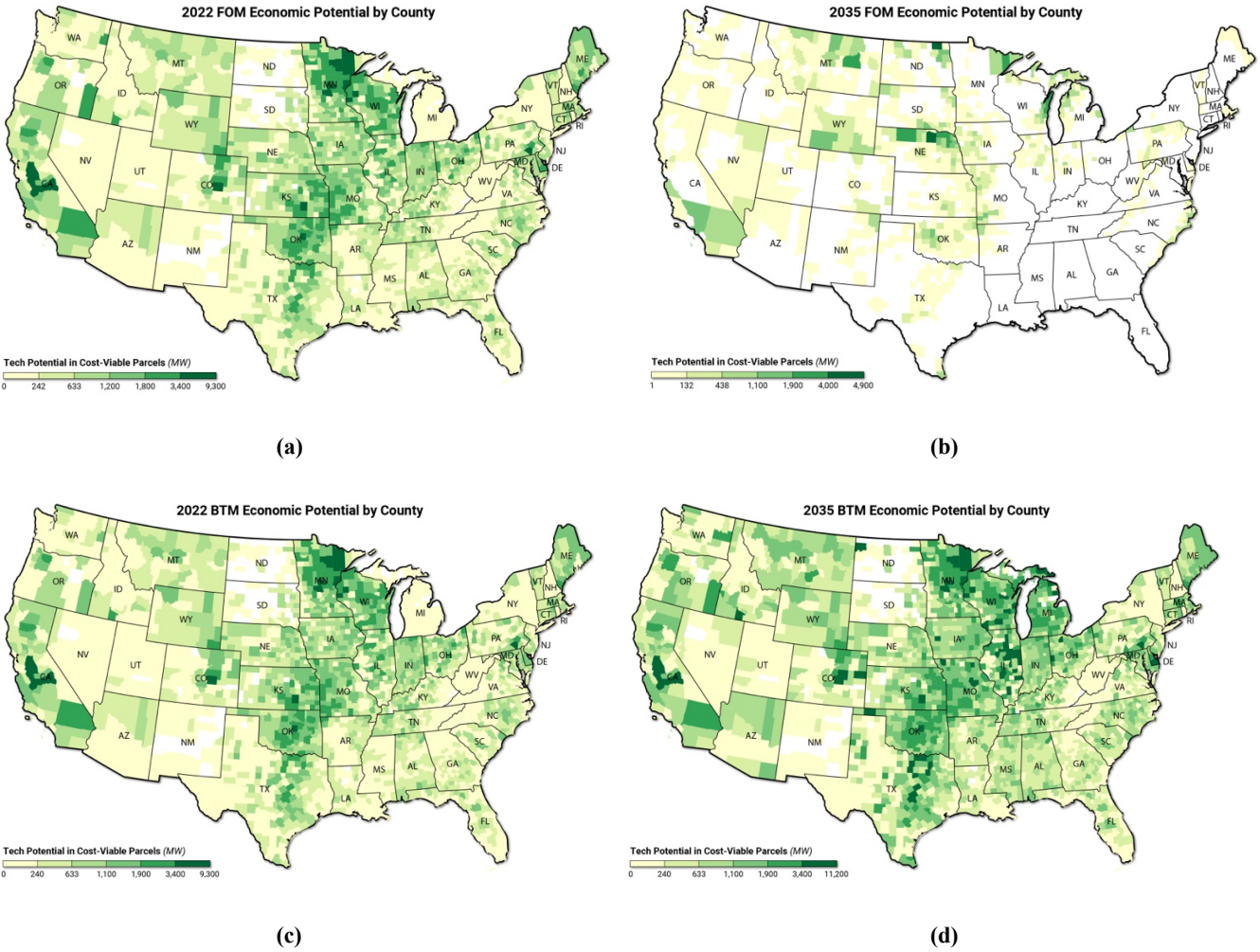


Figure 7: Economic potential for DW in CONUS as measured in megawatts for every county and every suitable land parcel within those counties. The subfigures provide results for four scenarios: (a) FOM 2022, (b) FOM 2035, (c) BTM 2022, and (d) BTM 2035. The results show significant opportunity for FOM in the middle region of the country with higher wind speeds as well as some opportunities in coastal regions and New England. The BTM results show substantial opportunity throughout the country, but with relatively more opportunity in the central wind belt, Midwest, California, and Maine. In these figures, the maximum BTM turbine has been used to show maximum capacity, rather than the sized down turbine.

Economic potential can also be understood through supply curves that describe the cumulative capacity by levelized cost of energy (LCOE), as presented in [Figure 8](#). The inflection point, or elbow, in these plots indicates the sensitivity of cost

to increased capacity beyond the point of critical economic value. The supply curve for FOM shows LCOE values in line with land-based utility-scale wind energy LCOE (as compared to the NREL Annual Technology Baseline), with about 7,000 GW having an LCOE lower than \$30/MWh across both Baseline 2022 and Baseline 2035. For BTM (using the minimum potential), the supply curves show a large range in LCOE values: A cumulative capacity of approximately 100 GW has an LCOE of \$400/MWh for Baseline 2022 and Baseline 2035, with lower LCOE overall for the future scenario.

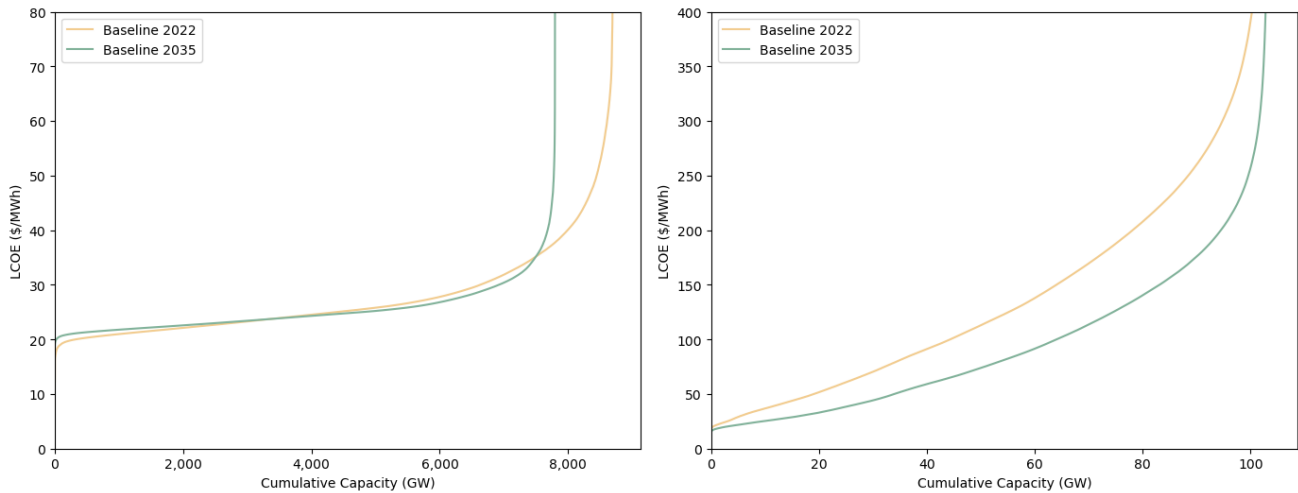


Figure 8: Cumulative capacity by leveled cost of energy (LCOE) for FOM (left) and minimum BTM (right). These plots demonstrate the relationship between cost and capacity with the inflection point or elbow, beyond which cost to expand capacity exceeds practical values.

3.2 Annual energy production

The AEP for DW was calculated for all technically viable parcels (parcels with technical potential for DW) and for cost-viable parcels (parcels with economic potential for DW) only (Table 7). Technically viable AEP is much larger than cost-viable AEP across scenarios (about 3x for minimum BTM and over 10x for FOM). When comparing between applications, FOM AEP is approximately 2.2x larger than minimum BTM AEP. This metric highlights the enormous potential for energy generation potential for FOM deployments (more than 38,000 TWh), meaningfully limited by current economic constraints (3,100 TWh). Insofar as policies may provide incentives for FOM deployments and unlock additional potential, this is an important result. Downscaled (minimum) BTM opportunity is much more modest in scale but still offers a substantial energy generation potential at 288 TWh for all parcels and 102 TWh for the subset of cost-viable (profitable) parcels. Compared to the estimated 4,000 TWh of electricity consumption in the United States (DOE, 2024), this figure suggests that a substantial fraction of that energy could be generated with DW. Taking the most conservative estimates, 2.5 % of demand could be satisfied using economic BTM scenarios and an additional 78.5 % of demand could be satisfied with economic FOM scenarios. Additional incentives for deployment or more favorable net metering regulations (for BTM scenarios) would allow an even greater potential.

Table 7: Annual energy production for technically viable and cost-viable parcels in CONUS

Scenario	AEP (TWh)			
	All technically viable parcels		Cost-viable parcels only	
	Min. BTM	FOM	Min. BTM	FOM
Baseline 2022	288	38,163	102	3,142
Baseline 2035	289	35,285	171	802

370 Finally, [Figure 9](#) shows the distribution of AEP (aggregated by county) across CONUS for all technically viable parcels for DW (regardless of economic viability) to allow inspection of geospatial distribution of these opportunities. While significant opportunity exists in all states, we observe higher AEP for both FOM and BTM applications across the majority of the Midwest and in some parts of California and the Northeast. These trends are consistent across the technical and economic potential metrics.

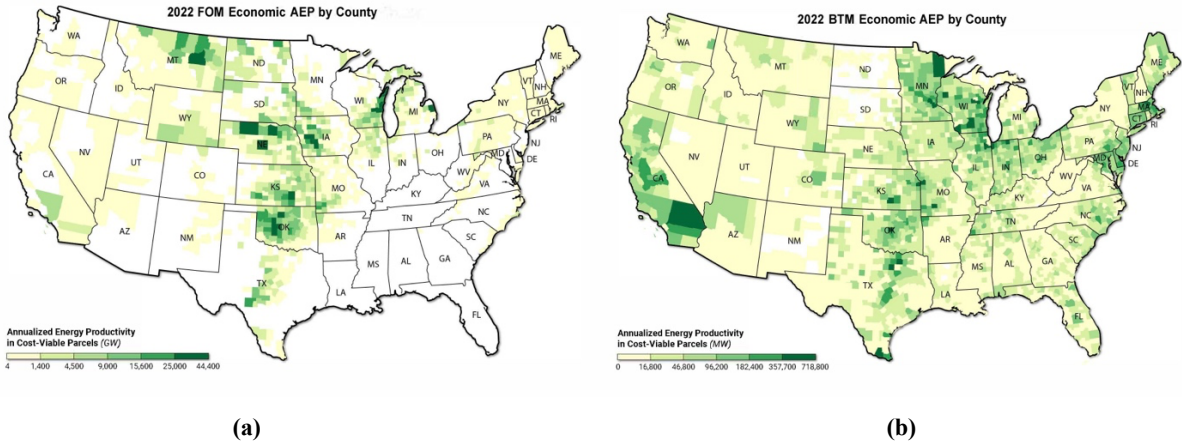


Figure 9: Annual energy production for technically viable DW in CONUS as measured in kilowatt-hours for every county and every suitable land parcel within those counties for (a) Baseline 2022 FOM and (b) Baseline 2022 BTM.

3.3 Opportunities for rural and agricultural parcels

380 Due to recent investments in incentives for DW deployment in rural and agricultural areas through the [RAISE-RAISE](#) initiative, we also seek to highlight potential unique opportunities in this sector. To calculate AEP for cost-viable rural and agricultural parcels, [RAISEREAP](#)-eligible model results at the census block-group level were overlayed with the USDA 2023 national cropland data layer (USDA, 2023), which classifies CONUS into a 30 m resolution grid of land use type (areas classified as agricultural land in the CroplandCROS dataset are identified in Table A3). The benefit of using the

385 CroplandCROS dataset is the ability to break the analysis down to specific crop types, though the results presented here use

a simplification of those categories (e.g., all crops have been combined into “agricultural”). Then, the relative proportion of agricultural land in each block group is calculated to estimate the DW opportunity in these areas.

One critical assumption used by this approach is that the DW results are evenly spread across the block group. The model produces turbine locations that could be modeled as single points, which would only have one land use type each.

390 However, real-world turbine placement is governed by many site-specific factors that cannot practically be modeled. Using the turbine positions proposed by the model to determine land use may give false precision, whereas the more probabilistic approach described above may give a closer estimate of real-world land use. Additionally, using smaller DW polygons (i.e., parcel-level results) could give more accurate results at the cost of greater computational requirements.

395 Table 8 highlights the top 10 states in CONUS for cost-viable generation in agricultural/rural areas for the 2022 BTM and FOM scenarios. Much of the agricultural DW opportunity for both the BTM and FOM scenarios is in the Midwest due to the region’s availability of agricultural land as well as the area’s wind resource.

Table 8: Top 10 CONUS states based on agricultural cost-viable AEP (GWh) by CroplandCROS land use (excluding RAISEREAP-ineligible areas) according to (a) BTM 2022 and (b) FOM 2022 model results.

BTM Rank	State	AEP (GWh)		FOM Rank	State	AEP (GWh)
1	Wisconsin	2,983		1	Iowa	310,037
2	Indiana	2,635		2	Kansas	173,969
3	Minnesota	2,382		3	Nebraska	155,306
4	Illinois	2,123		4	Wisconsin	150,077
5	Iowa	1,937		5	Oklahoma	130,812
6	Ohio	1,875		6	South Dakota	66,386
7	Kansas	1,842		7	North Dakota	61,977
8	California	1,187		8	Minnesota	54,974
9	Texas	1,158		9	Illinois	52,955
10	Nebraska	1,147		10	Michigan	42,525

400 These results suggest there is a substantial opportunity for DW on agricultural land. Overall, agricultural land represents 33 % of the total DW opportunity for the 2022 BTM scenario, and 42 % for FOM 2022, indicating that agricultural and rural areas represent the greatest opportunity for DW, more than any other land use type.

4 Discussion and conclusion

405 The work presented here represents a significant advancement in depth, resolution and rigor in understanding the technical and economic potential of DW energy across the contiguous United States. This study demonstrates the increased efficiency and capability of the dWind model, which now operates 30 times faster than prior versions and can handle an entire dataset of over 150 million parcels, compared to the sample of 1 million parcels used previously. These improvements are largely attributed to the shift from concurrency to parallel processing, which drastically reduced runtime per parcel, enabling more granular, parcel-level analysis across the country. Meanwhile, improvements to parcel selection, siting, and turbine downsizing have improved the accuracy and realism of model estimates.

The findings show that the potential for DW energy is considerably higher than previously estimated. We calculate that there is 8,695 GW of DW technical potential for FOM applications in the Baseline 2022 scenario, and 7,796 GW in the Baseline 2035 scenario, which is, on average, 1.8 times more technical potential in CONUS than previously reported. Similarly, there is, on average, 2.1 times more technical potential for BTM applications: 1,749 GW in the Baseline 2022 scenario and 3,743 GW in the Baseline 2035 scenario. ~~These gains underscore the vast untapped DW potential.~~ The improved model also highlights additional economic potential for BTM applications, demonstrating DW's promise as a cost-effective renewable energy source. Compared to the estimated 4,000 TWh of electricity consumption in the United States (DOE, 2024), a substantial fraction of that energy could be generated with DW. Taking the most conservative estimates, 2.5 % of demand could be satisfied using economic BTM scenarios and an additional 78.5 % of demand could be satisfied with economic FOM scenarios. Additional incentives for deployment or more favorable net metering regulations (for BTM scenarios) would allow an even greater potential. In alignment with recent USDA/DOE incentive programs, we also note significant existing opportunity for DW generation in agricultural and rural areas: The top 10 states for FOM systems have an AEP of 1,199 TWh, and the top 10 states for BTM applications have an AEP of 19 TWh.

425 ~~However, like any modeling approach that provides estimates about the future, this analysis has limitations. Firstly, the analysis was only performed on the contiguous United States (although similar analyses can be performed for other areas of the world given data availability and access to computing resources). Likewise, there is an opportunity in the future for the in-depth exploration of uncertainties in the results. Key sources of uncertainties most critically derive from inherent uncertainties in the data sources including: electrical demand derived from building loads, parcel data completeness and land use, canopy cover and exclusions including slope of terrain. Beyond this, there is specific uncertainty in adoption rate and presently agents make independent decisions, while in practice adoption may follow a more organic growth model. In future work we hope to incorporate agentic decision making and expressly model adoption rates to understand the potential for DW over time. Lastly, our study considers the siting of one turbine per parcel and in future work we hope to explore multi-turbine siting, when appropriate, as well as hybrid systems designs that incorporate some aspect of energy storage and photovoltaic generation.~~

~~Moreover, the~~ Despite these limitations this work marks a significant degree of progress towards large scale high resolution modeling of DW potential. ~~The~~ ~~This model upgrade comes at a pivotal time, aligning with national goals for renewable energy expansion and carbon reduction. The~~ granular data provided by the updated dWind model will be invaluable for policymakers, industry stakeholders, and property owners, enabling them to make more informed decisions regarding DW implementation. The framework described here is designed to be universal and adaptable, allowing extention to additional domains and modeling of arbitrarily complex technology scenarios and adoption processes. By offering insights on site-specific feasibility and economic return, the model supports strategic planning, incentive design, and market expansion for DW technology. In summary, the enhanced model described here serves as a comprehensive tool for accelerating the adoption of distributed wind energy, particularly in rural and agricultural areas, and marks an essential step toward a more resilient and sustainable energy infrastructure in the United States.

Appendix

Table A1: Parcel land uses categorized by sector, technology application, and associated building model.

Sector(s)	Application(s)	Land Use(s)	Building Model
Residential	BTM	Single family residential; multifamily residential (2–4 units); mobile/manufactured home	Reference
		Multifamily residential (5–100 units)	Midrise Apartment
		Dormitory	Small Hotel
		Highrise apartments	Large Hotel
		Commercial and residential (mixed use)	Medium Office
	FOM	Residential vacant land; misc. residential improvement; planned unit development	Reference
	BTM, FOM	Condominiums (industrial)	Midrise Apartment
		Low-income housing (exempt)	Medium Office
Residential, agricultural	BTM, FOM	Rural/agricultural residence	Reference
Commercial	BTM	Grocery, supermarket	Supermarket
		Restaurant, bakery, bar, tavern	Full-Service Restaurant
		Fast-food restaurant	Quick-Service Restaurant
		Day care, preschool	Primary School
		Public/private school, orphanage	Secondary School
		Retirement home; veterinary/animal hospital	Outpatient
		Hospital (public and private)	Hospital
		Motel	Small Hotel
		Hotel, resort, hostel	Large Hotel
		Religious/church/worship; museums, library, art gallery; post office; funeral home/mortuary; loft building	Small Office
		Office; community center, club, charity; communications/cellular; miscellaneous (general)	Medium Office

		Bank	Large Office
		Entertainment (arcade, auditorium, bowling alley, dance hall, theatre, skating rink)	Stand-Alone Retail
		Recreation (driving range, miniature golf, gym, health spa, pool hall, public swimming pool, recreation center)	Stand-Alone Retail
		Retail (general retail, convenience store, department store, appliance store, drug store, gas/service station, car wash, auto repair, vehicle rental/sales, salon, dispensary, dry cleaner, florist, kennel, liquor store, take-out restaurant)	Stand-Alone Retail
		Shopping center, strip center, mini-mall, mall, wholesale outlet, retail stores, store/office (mixed use)	Strip Mall
	FOM	Governmental/public use (general)	Midrise Apartment
		Warehouse; vacant land; county owned (exempt); state owned (exempt); parking lot/common area; storage; recreational/entertainment (general); fairgrounds; utilities; easement; transportation and communications (general)	Warehouse
	BTM, FOM	College/university	Secondary School
		Medical or dental building/clinic	Outpatient
		Public health care facility (exempt); industrial building; distillery, brewery, bottling; casino; cannery; cannabis grow facility	Hospital
		Hotel/motel	Small Hotel
		Exempt property	Small Office
		City owned (exempt); emergency (police, fire, rescue); multi-story store; truck stop; radio or TV station	Medium Office
		Commercial (general); country club; golf course; crematorium; farm supply (retail)	Stand-Alone Retail
		Warehouse (general); commercial vacant land; structures (general and misc.)	Warehouse
Commercial, agricultural	FOM	Agricultural (crops, vineyard, feedlots, grove, livestock, orchard, range land, vacant land, well site)	Warehouse
	BTM, FOM	Ranch	Stand-Alone Retail
		Farm (crop, dairy, poultry, etc.)	Warehouse

Industrial	BTM	Commercial and industrial (mixed use)	Large Office
		Mining facility (oil, gas, mineral, precious metals)	Warehouse
	FOM	Industrial (vacant land, lumberyard, bulk storage)	Warehouse
	BTM, FOM	Industrial (general); factory; foundry; processing plant; manufacturing; recycling; waste disposal; refinery; wells; mill; utility	Hospital
Industrial, agricultural	FOM	Agricultural/rural (general)	Warehouse

Table A2: Parcel land use types excluded for distributed energy resource development.

Airport and related
Cultural, historical (monuments, homes, museums, cemeteries, other)
Fish and wildlife (refuge, zoo, fish camp/game club)
Forest (reserve/conservation, timberland)
Marine facility (pier/wharf, shipyard, watercraft)
Military (office, base, post, port, reserve, weapon range, test sites)
Outdoor recreation (beach, mountain, desert)
Outdoor recreation (park, playground, picnic area, campground, RV park, racquet court, tennis court, riding stable and trails, public swimming pool)
Railroad and related
Road and related
Transportation (vehicles, goods in transit, recreational vehicles/travel trailers)
Unusable (contaminated, chemical, under construction, destroyed/uninhabitable, waste land/marsh/swamp, billboards, natural resources)
Water (lakes, river, shore, reservoir/water supply, irrigation and flood control)

Table A3: Blade heights for various turbine sizes and height configurations.

Turbine Size (kW)	Rotor Radius (m)	Turbine Height – 20 m		Turbine Height – 30 m		Turbine Height – 40 m		Turbine Height – 50 m		Turbine Height – 80 m	
		Min. Blade Height (m)	Max. Blade Height (m)	Min. Blade Height (m)	Max. Blade Height (m)	Min. Blade Height (m)	Max. Blade Height (m)	Min. Blade Height (m)	Max. Blade Height (m)	Min. Blade Height (m)	Max. Blade Height (m)
		Height (m)	Height (m)	Height (m)	Height (m)	Height (m)	Height (m)	Height (m)	Height (m)	Height (m)	Height (m)
2.5	2.2	17.8	22.2	27.8	32.2	37.8	42.2	-	-	-	-
5	3.1	-	-	26.9	33.1	36.9	43.1	-	-	-	-

10	4.4	=	=	25.6	34.4	35.6	44.4	=	=	=	=
20	6.2	=	=	23.8	36.2	33.8	46.2	43.8	56.2	=	=
50	9.8	=	=	20.2	39.8	30.2	49.8	40.2	59.8	=	=
100	13.8	=	=	=	=	26.2	53.8	36.2	63.8	=	=
250	21.9	=	=	=	=	=	=	28.1	71.9	=	=
500	30.9	=	=	=	=	=	=	19.1	80.9	49.1	110.9
750	37.8	=	=	=	=	=	=	12.2	87.8	42.2	117.8
1000	43.7	=	=	=	=	=	=	6.3	93.7	36.3	123.7
1500	53.5	=	=	=	=	=	=	=n/a	=n/a	26.5	133.5

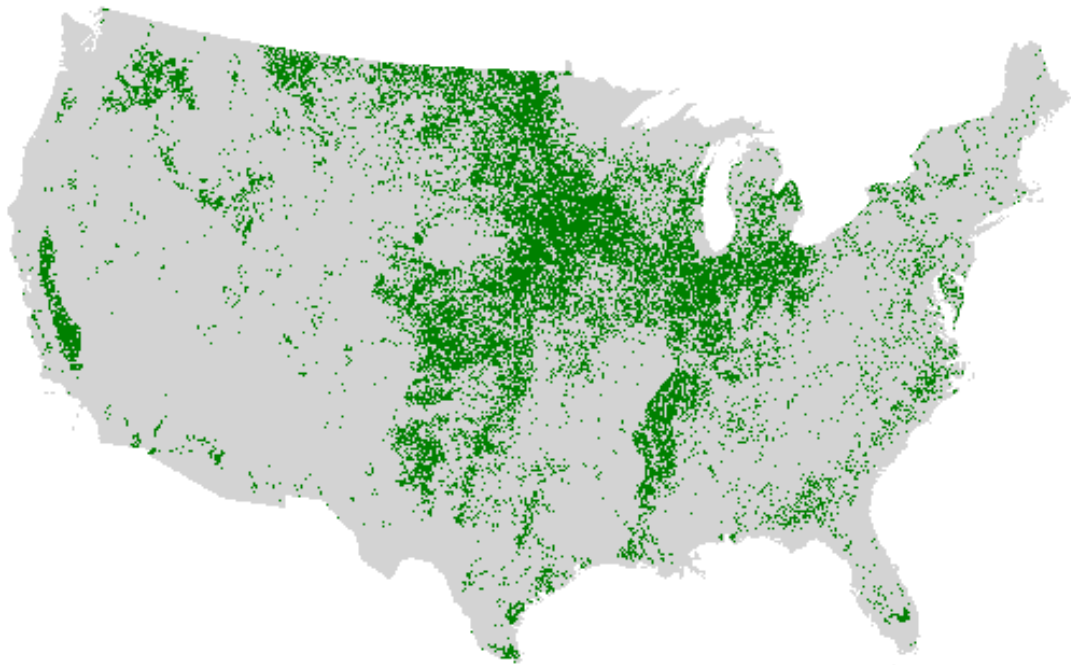


Figure A1: Areas classified as agricultural land in the CroplandCROS dataset. The prevalence of agricultural land in the midwestern states gives them the greatest opportunity for distributed wind production on agricultural land.

Data Availability

Data products from this work have been made publicly available at <http://a2e.energy.gov/project/dw>.

465 **Author Contribution**

JL developed the model, executed performance improvements, and prepared all input data. SP and JL conducted model runs and managed data outputs. PP, JL, CP, MS, PD, and PC performed data analysis and interpretation of results. CP and JDLC performed data aggregation, visualization, and release. JL and CP prepared the manuscript with contributions from all authors.

470

Competing Interests

The contact author has declared that none of the authors has any competing interests.

Disclaimer

475

The views expressed in the article do not necessarily represent the views of the DOE or the U.S. Government. The U.S. Government retains and the publisher, by accepting the article for publication, acknowledges that the U.S. Government retains a nonexclusive, paid-up, irrevocable, worldwide license to publish or reproduce the published form of this work, or allow others to do so, for U.S. Government purposes.

480

Acknowledgements

The authors would like to thank the reviewers Patrick Moriarty, Meghan Mooney, and Kristi Potter for their thoughtful suggestions for paper improvement. The authors would also like to thank Billy Roberts and Katie Carney for their graphics support.

485

Financial Support

This work was authored by the National Renewable Energy Laboratory, operated by Alliance for Sustainable Energy, LLC, for the U.S. Department of Energy (DOE) under Contract No. DE-AC36-08GO28308. Funding was provided by U.S. Department of Energy Office of Energy Efficiency and Renewable Energy Wind Energy Technologies Office.

490

References

Buster, G., Rossol, M., Pinchuk, P., Benton, B. N., Spencer, R., Bannister, M., and Williams, T.: NREL/reV: reV 0.8.0 (v0.8.0), Zenodo, <https://doi.org/10.5281/zenodo.8247528>, 2023.

495

Garcia-Castellanos, D., and Lombardo, U.: Poles of inaccessibility: A calculation algorithm for the remotest places on earth, Scott Geogr J, 123, 227–233, <https://doi.org/10.1080/14702540801897809>, 2007.

- 500 Lantz, E., Sigrin, B., Gleason, M., Preus, R., and Baring-Gould, I.: Assessing the future of distributed wind: Opportunities
for behind-the-meter projects. National Renewable Energy Laboratory, Golden, CO, NREL/TP-6A20-67337,
<https://www.nrel.gov/docs/fy17osti/67337.pdf>, 2016.
- 505 Lopez, A., Mai, T., Lantz, E., Harrison-Atlas, D., Williams, T., and Maclaurin, G.: Land use and turbine technology
influences on wind potential in the United States., Energy, 223, 120044, <https://doi.org/10.1016/j.energy.2021.120044>, 2021.
- Maclaurin, G. J., Grue, N. W., Lopez, A. J., Heimiller, D. M., Rossol, M., Buster, G., and Williams, T.: The renewable
energy potential (reV) model: A geospatial platform for technical potential and supply curve modeling, National Renewable
Energy Laboratory, Golden, CO, NREL/TP-6A20-73067, <https://doi.org/10.2172/1563140>, 2019.
- 510 McCabe, K., Prasanna, A., Lockshin, J., Bhaskar, P., Bowen, T., Baranowski, R., Sigrin, B., and Lantz, E.: Distributed wind
energy futures study, National Renewable Energy Laboratory, Golden, CO, NREL/TP-7A40-82519,
<https://www.nrel.gov/docs/fy22osti/82519.pdf>, 2022.
- 515 McDermott, T. E., McKenna, K., Heleno, M., Bhatti, B. A., Emmanuel, M., and Forrester, S.: Distribution system research
roadmap: energy efficiency and renewable energy, Pacific Northwest National Laboratory, Richland, WA, PNNL-31580,
<https://www.osti.gov/servlets/purl/1843579>, 2022.
- Phillips, C., and Lockshin, J.: Distributed wind, U.S. Department of Energy Atmosphere to Electrons, Data Archive and
Portal (DAP), <https://a2e.energy.gov/project/dw>, last access 24 September 2024.
- 520 Rickerson, W., Gillis, J., Bulkeley, M.: The value of resilience for distributed energy resources: an overview of current
analytical practices, National Renewable Energy Laboratory, Golden, CO, NREL/SR-7A40-90139,
<https://www.nrel.gov/docs/fy24osti/90139.pdf>, 2024.
- 525 Sheridan, L., Kazimierczuk, K., Garbe, J., and Preziuso, D.: Distributed wind market report: 2024 edition, Pacific Northwest
National Laboratory, Richland, WA, PNNL-36057,
https://www.pnnl.gov/main/publications/external/technical_reports/PNNL-36057.pdf, 2024.
- 530 Sigrin, B., Gleason, M., Preus, R., Baring-Gould, I., and Margolis, R.: The distributed generation market demand model
(dGen): Documentation. National Renewable Energy Laboratory, Golden, CO, NREL/TP-6A20-65231,
<http://www.nrel.gov/docs/fy16osti/65231.pdf>, 2016.

Stehly, T., and Duffy, P.: 2021 cost of wind energy review, National Renewable Energy Laboratory, Golden, CO, NREL/PR-5000-84774, <https://www.nrel.gov/docs/fy23osti/84774.pdf>, 2022.

535

~~The White House: FACT SHEET: President Biden signs executive order catalyzing America's clean energy economy through federal sustainability, <https://www.whitehouse.gov/briefing-room/statements-releases/2021/12/08/fact-sheet-president-biden-signs-executive-order-catalyzing-americas-clean-energy-economy-through-federal-sustainability/>, last access 20 October 2024.~~

540

U.S. Department of Energy Office of Energy Efficiency and Renewable Energy: Renewable energy resource assessment information for the United States, <https://www.energy.gov/eere/analysis/renewable-energy-resource-assessment-information-united-states>, last access 20 October 2024.

545

~~U.S. Department of Energy Office of Policy: On the path to 100% clean electricity, <https://www.energy.gov/policy/articles/path-100-clean-electricity>, last access 20 October, 2024.~~