

Investigation of blade flexibility effects over the loads and wake of a 15 MW wind turbine using a flexible actuator line method

Francois Trigaux¹, Philippe Chatelain¹, and Grégoire Winckelmans¹

¹Institute of Mechanics, Materials and Civil Engineering (iMMC), Université catholique de Louvain (UCLouvain), 1348 Louvain-la-Neuve, Belgium

Correspondence: Francois Trigaux (francois.trigaux@uclouvain.be)

Abstract.

This paper investigates the impact of the blades flexibility on the aerodynamics and wake of large offshore turbines using a flexible actuator line method (ALM) coupled to the structural solver BeamDyn in Large Eddy Simulations. The study considers the IEA 15-MW reference wind turbine in close-to-rated operating conditions. The flexible ALM is first compared to Open-FAST simulations and is shown to consistently predict the rotor aerodynamics and the blades structural dynamics. However, the effect of the blade flexibility on the loads is more pronounced when predicted using the ALM than using the blade element momentum theory. The wind turbine is then simulated in a neutral turbulent atmospheric boundary layer with flexible and rigid blades. The significant flapwise and torsional mean displacements lead to an overall decrease of 14% in thrust and 10% in power compared to a rotor with no deformation. These changes influence the wake through reduced time-averaged velocity deficit and turbulent kinetic energy. The unsteady loads induced by the rotation in the sheared wind and the turbulent velocity fluctuations are also substantially affected by the flexibility and exhibit a noticeably different spectrum. However, the influence of these load variations is limited over the wake, and the assumption of rigid blades in their deformed geometry is shown to be sufficient to capture the wake dynamics. The influence of the resolution of the flow solver is also evaluated, and the results are shown to remain consistent between different spatial resolutions. Overall, the structural deformations have a substantial impact on the turbine performance, loads and wake, which emphasizes the importance of considering the flexibility of the blades in simulations of large offshore wind turbines.

1 Introduction

Over the past years, offshore wind energy has grown massively thanks to a drastic decrease of its levelized cost of energy. This significant reduction is primarily attributed to the increase of the rotor size that tends to drive down both capital and operational expenditures. In fact, larger modern turbines typically exhibit a lower turbine cost per MW compared to their smaller counterparts. At the level of the wind farm, the decreased number of turbines also allows to reduce the cables requirements (Fingersh et al., 2006). The cost of maintenance per MW was also reported to be by a few percent lower per additional MW of rated power (Sørensen and Larsen, 2021). Furthermore, larger turbines typically have higher hub heights, which results in a more important mean flow velocity across the rotor and hence to an increased power extraction per unit area (Sørensen and Larsen,

25 2023). As a result, turbines with a rated power of 10-12 MW are now commonly used in offshore conditions, and the industry is rapidly developing 15-18 MW prototypes with blades much longer than 100 m.

However, as the rotor diameter increases, fundamental changes of design are necessary to constrain the total mass of the blades to reduce the centrifugal and gravitational loads acting upon them (Sieros et al., 2012). Therefore, recent blades are slender and made of lightweight composite materials, increasing their flexibility and potentially causing significant aeroelastic effects. The structural deformation of the blades modifies their aerodynamics by adding bending and twist, which can lead to substantial changes of the mean loads acting on the turbine. Additionally, the wind shear and turbulence create unsteady aeroelastic effects that impact the turbine lifetime. These variations can ultimately affect the flow past the turbine, modifying the wake evolution and recovery. A deeper understanding of the loads and wake of these large turbines is required to design reliable products and predict their interaction in a wind farm, which will allow to further reduce the cost of the offshore wind energy.

The structural aspect is often neglected in simulations that use the actuator line or disk methods to represent the flow past a turbine. Whereas this approach was mostly valid for smaller turbines, the flow past large rotors is now noticeably affected by the changes of the aerodynamics. To evaluate these effect, some studies have considered the coupling of a flow solver to a structural solver using actuator methods as interface. Storey et al. (2013) coupled OpenFAST to an actuator disk method to perform simulations of one or two turbines and to compare their results to measurements. Vitsas and Meyers (2016) used a modal structural model coupled to an actuator sector method to study two wind farm configurations. More recently, OpenFAST was also coupled to Nalu-Wind and PALM (Sprague et al., 2020; Krüger et al., 2022) to study the NREL-5 MW reference wind turbine. Hodgson et al. (2021) also performed validation of flexible actuator methods against high fidelity blade-resolved simulations, highlighting the ability of the ALM to accurately capture aeroelastic effect on rotors up to 5 MW (see also Sørensen et al. (2015); Hodgson et al. (2022)). An elastic ALM based on the coupling between an ALM and an Euler beam model discretized using finite differences was also developed by Meng et al. (2018, 2020), and used for a pair of NREL-5 MW turbines and a wind farm. Spyropoulos et al. (2021) also developed a fluid-structure interaction framework based on the ALM in a flow solver for the compressible URANS equations. That framework uses a multi-body formulation with Timoshenko beam elements to solve the structural dynamics. It was compared in uniform flow against the Blade Element Momentum (BEM) theory and a lifting line, and was show to accurately predict the blade deflections and the loads, also in yawed conditions. Della Posta et al. (2022, 2023) also considered a two-way coupling between a structural solver and an ALM, including the tower, for unsteady aerodynamics of the NREL-5 MW rotor. However, most of the aforementioned studies consider medium-scale rotors with simpler structural parameters than the new generation turbines. Consequently, the effect of the non-linearities induced by the large displacements are not considered. Additionally, the impact of the flexibility is rarely assessed by comparing the results to those obtained for rigid blades. Finally, most of the studies focus on the blade and rotor loads, but do not assess the effect of the flexibility on the wake in depth.

This study investigates the effects of the deformation of the rotor on a very large reference wind turbine in realistic operating conditions. The open-source IEA 15-MW (Gaertner et al., 2020) turbine model is selected for its large rated power that is representative of modern large-scale offshore turbines and for its comprehensive documentation. Large Eddy Simulations of the

60 atmospheric boundary layer and of the wake of the turbine are carried using a flexible ALM coupled to the nonlinear structural solver *BeamDyn* from OpenFAST. Comparison between fully coupled aeroelastic simulations and simulations assuming rigid blades aims at providing a deeper understanding into the variation of the loads induced by the flexibility. Then, the effect of the blade displacement and of the loads variation is assessed over the wake. The contribution of this study is therefore to provide further insights into the effect of the mean and unsteady deformations over the loads of the 15 MW turbine and to evaluate
65 their impact on the wake.

This paper is structured as follows. The methodology is presented in Section 2, which describes the flow solver, the embedded flexible ALM and the coupling with the structural solver. Then, Section 3 presents a comparison between results obtained with the flexible ALM to those obtained using OpenFAST simulations. Performed in both uniform and turbulent flows, this comparison also aims at verifying the results obtained with the flexible ALM and at assessing the relevance of the various
70 aerodynamic models for the simulation of large flexible wind turbines. The case of a wind turbine in realistic atmospheric conditions is then investigated in Section 4, where comparison between rigid and flexible rotors are carried out. Finally, the impact of the spatial resolution of the flow is also considered in Section 5.

2 Methodology

2.1 Flow solver

75 The LES of turbulent flow is performed by solving the incompressible Navier-Stokes equations supplemented by a subgrid scale (SGS) model, using an in-house developed massively parallel code (Duponcheel et al., 2014; Moens et al., 2018). Centered fourth-order finite difference schemes are used for the spatial discretization. The temporal integration is carried using a 2nd order Adams-Bashfort scheme (AB2). The Smagorinsky SGS model (Smagorinsky, 1963) is used, with the asymptotic value of $C_S = 0.027$ corresponding to LES where the grid size is much larger than the Kolmogorov scale (Meneveau and Lund,
80 1997). For simulation including the ground effect, the wall model developed in Thiry (2017) is used to handle the connection of the LES to the ground. The turbulent inflow consists either in synthetic turbulent fluctuations generated using the Mann algorithm (Mann, 1998) (used in this study for the comparison to the aerodynamic models of OpenFAST) or in a neutral atmospheric boundary layer obtained using a co-simulation (Moens, 2018) (used for the actual study of the loads and wake). In the latter case, a simulation of a half-channel flow is carried with periodic boundary conditions in the streamwise and lateral
85 directions and slip at the top boundary. The flow is driven by a constant pressure gradient, chosen in combination with the ground roughness to obtain the prescribed hub velocity and turbulence intensity (TI). This simulation runs until statistical convergence is reached. Then, it runs concurrently with the main simulation that contains the wind turbines. A vertical plane of velocity is sampled from the channel simulation and is used as inflow for the main simulation, providing a converged flow equivalent to a neutral atmospheric boundary layer. The influence of the wind turbine on the flow is modeled using an actuator
90 line method described hereunder.

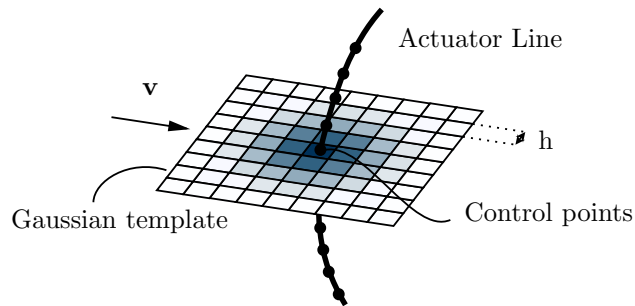


Figure 1. ALM with its associated template with Gaussian weights used for the effective velocity sampling and the forces distribution.

2.2 Actuator Line Method (ALM)

The actuator line method (ALM) consists in representing the effect of the blades on the flow by adding a forcing term to the LES equations (Sorensen and Shen, 2002). The ALM is here used with 2D forces distribution and integral velocity sampling (Mikkelsen, 2004; Jha and Schmitz, 2018; Churchfield et al., 2017). The blades of the turbine are first discretized into a series of segments at the center of which a control point is placed, coinciding with the aerodynamic center of the corresponding airfoil profile. The components of the aerodynamic force acting on each cross-section are computed using the effective flow velocity associated to the control point and the lift and drag coefficients of that airfoil. This effective velocity is obtained in two steps. First, the velocity at the flow solver grid points is linearly interpolated to the nodes of a 2D template centered on the control point. The template is depicted in Figure 1 and lies in the airfoil plane which is perpendicular to the actuator line, and is divided into cells of size h equal to the flow grid spacing. Then, the effective velocity is taken as a weighted average of the velocities on the template, using Gaussian weights. Here, the Gaussian weights are obtained using a 2D Gaussian kernel of width σ . Its value is taken relatively to the flow grid spacing h and is set to $\sigma/h = 2$; similarly to Troldborg (2008). This procedure requires many interpolations, yet its computational cost is limited by grouping the interpolated velocities in a single buffer and performing the MPI communication once. This velocity sampling is also conservative, as the template used is Gaussian, and the sum of its weights is unity. The distribution of the force is also performed in two steps. First, the force evaluated at the blade control point is distributed on the cells of the 2D template using the same Gaussian weights as that used for the velocity. Then, the force on each cell of the template is redistributed on the closest flow grid points using a linear distribution kernel (as this keeps the distribution as local as possible). It should be noted that the use of integral sampling leads to some smoothing of the high frequency velocity fluctuations. This effect is discussed in Section 3.2. The position of the control points is also updated to follow the time evolution of the deforming configuration.

For aeroelastic simulations, the accuracy of the loads provided by the ALM is essential as they drive the structural dynamics. However, this accuracy is often questioned, especially at the blade tip, mostly due to the regularization of the forces that reduces the induced velocity. To mitigate this issue, it is either possible to use vortex-based smearing corrections (see Meyer Forsting et al. (2019); Dag and Sørensen (2020); Martínez-Tossas and Meneveau (2019); Kleine et al. (2023)) or to use regularization kernels that lead to a more accurate prediction of the forces (Jha and Schmitz, 2018; Caprace et al., 2019). The second approach

is used here, by using the 2D Gaussian regularization for both the evaluation of the effective velocity and the forces distribution. This leads to a better estimation of the aerodynamic loads, hence decreasing the need for a smearing correction, especially when slender blades are considered. A more detailed description of the used regularization is provided in Trigaux et al. (2022) and its advantages over a 3D distribution are detailed in Caprace et al. (2019). Note that the shape of the tip vortices is affected
120 by the type of mollification, and that the use of a 2D mollification results in a sharp force gradient that can lead to numerical oscillations in some numerical methods. These were here verified to be of small amplitude and not to affect the flow dynamics away from these vortices and the loads on the blades. The spatial resolution of the flow solver near the ALM is here taken as 64 pts/D. Section 5 evaluates the influence of the resolution on the loads and the wake in the aeroelastic case.

2.3 Structural solver

125 The structural dynamics of the blades are simulated using the *BeamDyn* module from OpenFAST (Wang et al., 2017). *BeamDyn* implements the nonlinear geometrically exact beam theory, which is particularly suited to study slender blades made of composite materials as it accounts for the large displacements and allows the coupling of degrees of freedom using full 6×6 cross-sectional mass and stiffness matrices. For the considered IEA 15-MW blade, this coupling mainly relates the flapwise and edgewise bending to the twist, which can substantially modify the angle of attack of the blade sections under classical
130 loading conditions. The use of *BeamDyn* is justified by the importance of the non-linear effects over large rotors (Manolas et al., 2015; Panteli et al., 2022). The structural data provided in Gaertner et al. (2020) are used. For this turbine, preliminary analysis indicates that the time-step must be constrained by $dt < 0.005$ seconds to correctly capture the dynamics of the first torsional mode. Each blade of the turbine is represented by one instance of the structural beam solver, for which the kinematics of the blade root is imposed. The simulations presented in this paper all consider a constant rotation speed, which decouples
135 the blade root boundary condition from the other blades and drivetrain dynamics. The choice of a constant rotation speed is motivated by the need to compare the wake exactly in different configurations, yet the absence of a model for the drivetrain dynamics impact the rotor loads, as discussed in Section 4.2. Additionally, this approach allows to use a larger time-step than those typically used in OpenFAST simulations. *BeamDyn* is coupled to the ALM as described in the following section.

2.4 Coupling

140 The coupling scheme linking the flow and structural solvers is the 2nd order Improved Serial Staggered (ISS) (Degroote, 2013), which is detailed in Figure 2. This scheme consists in evaluating the flow and the structural models at different time levels. The flow velocity is evaluated at time t and is used by the ALM to evaluate the aerodynamic forces based on the previous structural states $x(t - dt/2)$ (the states include the blade deformation, position and velocity). The structural response to these loads is then integrated in time, using sub-cycling (with constant forces) to meet the structural solver constraints on the time-step. The
145 forces are then reevaluated by the ALM using the updated structural states, and are distributed on the flow mesh according to the deformed configuration.

The computational time required for solving the structural dynamics is much lower than that required by the flow solver. *BeamDyn* is very efficient thanks to the use of high-order spectral finite elements (Sprague and Geers, 2008). When the

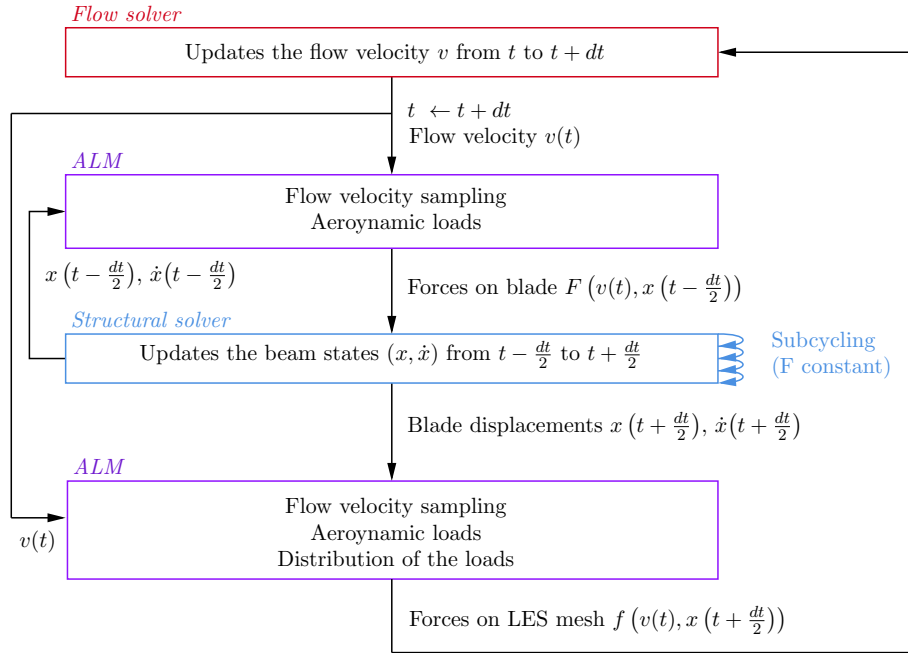


Figure 2. Schematic of the coupling between the flow and structural solver with the ALM as interface.

turbine operates at a constant rotation speed, the time-step also remains relatively large, resulting in fewer necessary sub-steps.

150 Additionally, the structural dynamics of each blade is here solved in parallel, leveraging the multiple CPUs dedicated to the flow solver that would otherwise remain in standby until the completion of the structural computation. As a result, the total overhead generated by the call to the structural solver is less than 5% compared to simulations performed with rigid blades. More details over the implementation of the coupling between the ALM and the structural solver in parallel are provided in appendix A.

155 The frames of reference in which the blade displacements, loads and wake will be presented are also defined according to Figure 3. The global frame, in which the wake quantities are presented, is located at the tower bottom. The $(\hat{e}_x, \hat{e}_y, \hat{e}_z)$ directions corresponds respectively to the streamwise, vertical and lateral directions. The loads are presented in the blade root frame \hat{e}_b . Its origin is located at the basis of the blade, and its orientation accounts for the shaft tilt angle, the blade rotation and the cone angle. The displacements are also measured in the blade root frame, and are considered as the variation from the
 160 undeflected configuration. The torsion angle is defined along the $\hat{e}_{y,b}$ axis, such that a positive value of the angle corresponds to a nose-up rotation of the blade section.

The presented methodology allows to simulate many rotations of wind turbines with flexible blades in LES at a reasonable computational cost (i.e., a few thousands of CPUh for the simulations presented in the next section). In what follows, it is compared to various aerodynamic models of OpenFAST before being applied to assess the effect of the flexibility over the
 165 IEA-15 MW turbine.

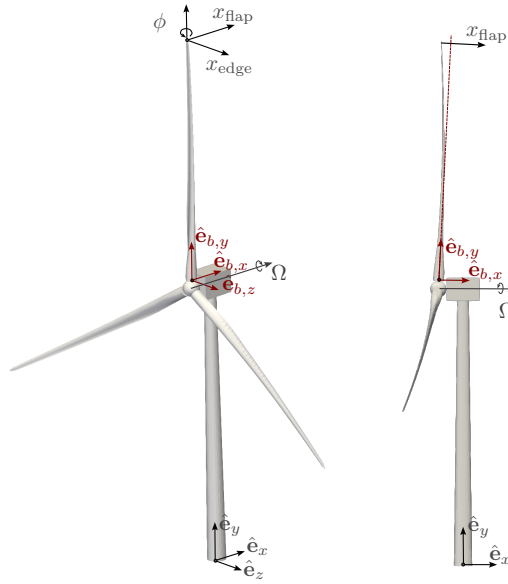


Figure 3. References frames: global frame (black, \hat{e}) and blade root frame (red, \hat{e}_b). The rotor rotation vector Ω and the blade tip displacements (x_{flap} , x_{edge} and ϕ) are also shown. 3D turbine rendering from OpenFAST.

3 Comparison to the BEM theory and to a free vortex wake model

The methodology developed in the previous section is here tested and compared against the results obtained using different aerodynamic models available in OpenFAST (v3.5.0). OpenFAST is a publicly available modular framework that uses physics-based models to perform aero-servo-elastic simulations of wind turbines under various conditions (Jonkman, 2013).

170 The presented comparison aims at verifying our methodology as well as pointing the limitations of some aerodynamic models for large wind turbines.

The IEA 15-MW reference wind turbine is here considered with the following parameters. The blades have a length of 117 m and the hub radius is 3 m, leading to a total diameter $D = 240$ m. To avoid tower strike, the blades are pre-bent by 4 m, the shaft is tilted by an angle of -6° and the rotor has a cone angle of 4° . The gravity loads are also included. All the
 175 parameters used for this model are provided in the turbine definition, except from the structural torsional damping factor which was increased to avoid torsional instabilities when the turbine operates in near-rated highly loaded conditions.

The following investigation compares the result obtained using the flexible ALM to those obtained using two aerodynamic models from OpenFAST: the Blade-Element Momentum Theory (BEM) model and a free vortex wake model (cOnvecting LAGRangian Filaments, OLAF) (Jonkman et al., 2015; Shaler et al., 2020). *BeamDyn* is used for the blade structural dynamics
 180 in all the considered cases.

3.1 Comparison in uniform flow

The case of a uniform inflow is first considered. The inflow wind speed is set to $U_\infty = 9 \text{ m s}^{-1}$, which corresponds to the region of the controller where the optimal tip-speed ratio (TSR) of 9 is maintained. Consequently, the constant turbine rotation speed Ω is set to 6.45 rpm. The ALM and OpenFAST simulations run for 200 seconds, which corresponds to $\simeq 21.5$ rotations, and the results are averaged over the last four rotations. For the ALM simulations, the computational domain size is $12D \times 12D \times 12D$ (in the streamwise, vertical and transverse directions, respectively). The turbine is located at the position $(4D, 6D, 6D)$ to ensure a sufficient distance from the domain boundaries. This way, the blockage ratio is $\simeq 0.5\%$, which allows to compare the ALM simulations to the OpenFAST aerodynamic models that do not account for the presence of lateral boundaries. A uniform resolution of 64 flow grid points per diameter is used and the time-step is set to $\simeq 0.025 \text{ s}$ to obtain 360 time-steps per turbine rotation. For the OLAF model, 50 blade nodes are used in the analysis and the time-step is set to 0.155 s, which corresponds to an azimuthal increment $\Delta\theta \simeq 6^\circ$ per time-step, as suggested in the guidelines (Shaler et al., 2020). The circulation on the blade is obtained using the same airfoil polars as that used in the ALM. The near wake consists of 1024 vortex panels, which gives a wake length corresponding to approximately 17 rotations. There is no far wake region. The last third of the wake is frozen to mitigate the effect of the wake truncation. This wake length was verified to be sufficient in this case to provide a converged force distribution on the blades by comparing to simulations with shorter near wake using 600 panels extending for 10 rotations, which led to the same results. The vortex core is regularized using the Vatisas vortex model¹ with the optimized parameter option, which corresponds to using $r_c = 2\Delta s$ where Δs is the mean spanwise spacing between the aerodynamic nodes. The size of the regularization parameter can noticeably affect the force distribution, especially near the tip. The regularization also evolves with time using a viscous diffusion model (here with the parameter $\delta = 1000$). For the BEM, 50 radial locations are used. The Prandtl's tip-loss factor is used to model the tip and the hub losses (Moriarty and Hansen, 2005). The tangential induction is accounted for in the BEM equations, and the effect of the drag term is considered in both the axial and tangential induction. The OpenFAST cases have a very small time-step of 0.0005 s, which is necessary to ensure the convergence of *BeamDyn*. Interested readers can refer to the IEA 15-MW definition that contains example cases with OLAF and the BEM (Gaertner et al., 2020).

A comparison of the rotor thrust and power coefficients predicted by each method is provided in Table 1. For the rigid case, the thrust and power coefficients of the ALM and OLAF match well, whereas the BEM tends to predict a lower power coefficient. For the flexible case, the tip displacement is predicted similarly by all methods. These deflections are particularly significant in the flapwise direction, reaching a value of 12 m at the blade tip, which corresponds to around 10% of the blade length. The torsion angle reaches -2.8° at the tip (corresponding to a nose-down rotation of the airfoil), which also importantly reduces the angle of attack of the blade section, resulting in a noticeable variation of the thrust and power coefficients when accounting for the blade flexibility. Specifically, all methods predict a 9% decrease of the thrust coefficient. The variation of the power coefficient is closer to 5% for the ALM and OLAF, whereas the BEM predicts a smaller reduction of 2%. As a result, the difference in power coefficients between the methods is lower when flexibility is considered.

¹This model goes back to the regularization by Rosenhead (1935) of point vortices, where $1/r = r/r^2$ is replaced by $r/(r^2 + r_c^2)$

Table 1. Comparison of the time-averaged thrust coefficient (C_T), power coefficient (C_P) and tip deformation predicted by the various methods.

Method		C_T		C_P		Flapwise	Edgewise	Torsion
		[-]		[-]		[m]	[m]	[deg]
Rigid	ALM	0.822		0.532		–	–	–
	OLAF	0.836	(+1.7%)	0.544	(+2.4%)	–	–	–
	BEM	0.804	(-2.1%)	0.488	(-8.2%)	–	–	–
Flexible	ALM	0.743		0.503		11.92	-1.02	-2.82
	OLAF	0.765	(+2.6%)	0.517	(+2.6%)	12.27	-1.08	-2.80
	BEM	0.732	(-1.3%)	0.479	(-4.4%)	11.76	-1.02	-2.83

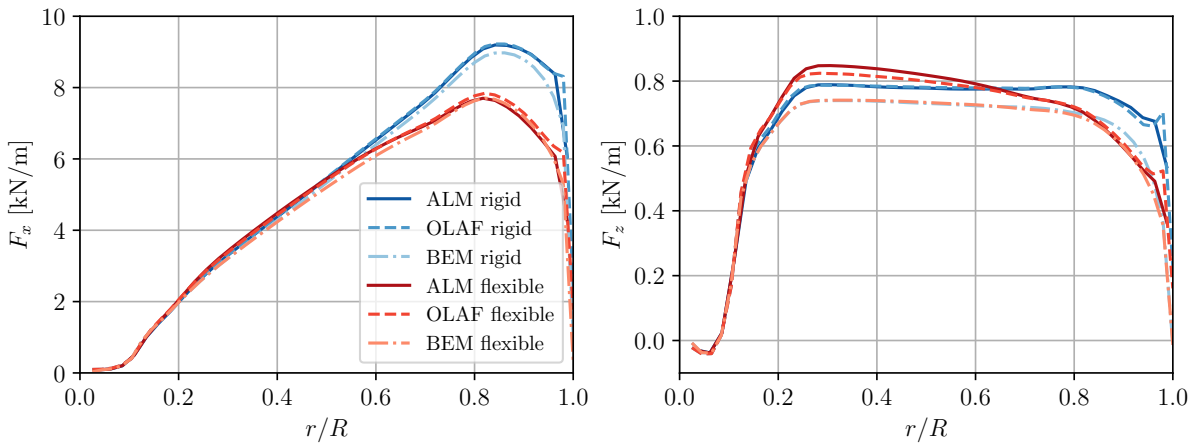


Figure 4. Steady state aerodynamic loads in the blade root frame for the rigid (blue) and flexible (red) cases: ALM (dark solid), free vortex wake model OLAF (dash) and the BEM (light dash-dot) from OpenFAST. Normal (F_x , left) and lateral (F_z , right) forces (relative to the blade root frame).

The aerodynamic forces acting on the rigid and flexible blade are displayed in Figure 4. These forces are expressed in the blade root frame. For the rigid case, the forces obtained using OLAF and the ALM match very well. The only noticeable difference between the two methods is the small increase of the forces near the blade tip, which is more pronounced using OLAF. The latter is due to the regularization of the trailing vortex filaments, which decreases the induced velocity near the tip. To a smaller extent, the ALM also depicts a slight increase of the lateral forces (i.e., F_z , in the blade root frame) at the tip due to the mollification (i.e., the smearing of the shed vortices (Caprace et al., 2019)). It is however less pronounced thanks to the use of the 2D mollification, without spanwise smearing. The forces distribution predicted by the BEM is lower than for OLAF and the ALM, especially in the edgewise direction. This difference was also observed in other studies (Madsen et al.,

2012; Perez-Becker et al., 2020) and can be explained by two factors. High thrust coefficients are somewhat challenging for the BEM as the limits of the validity of the theoretical model are reached, and the empirical Glauert correction is used. On the other hand, the mollification of the ALM and the regularization of the vortex core in OLAF also affects the induction, which
225 can result in slightly higher forces (Caprace et al., 2019; Shaler et al., 2023).

When flexibility is considered, all methods predict a significant decrease of the loads on the outer part of the blade ($r/R > 0.6$). This decrease is more important for OLAF and the ALM than for the BEM, especially in the edgewise direction. This difference arise from the fact that the BEM predicts less change of the axial induction due to the out-of-plane bending. Conversely, the effect of the torsion angle is captured similarly by all methods, which results in a similar load distribution in the
230 flapwise direction. Additionally, on the inner part of the blade ($r/R < 0.5$), OLAF and the ALM show an increase of the loads. This phenomenon arises from the additional flapwise deformation of the blade that modifies the location of the emission of the tip vortices and was also observed to a smaller extent for the NREL-5 MW turbine (Dose et al., 2018; Trigaux et al., 2022). It is not captured by the BEM as the effect of the blade curvature on its aerodynamics is here not modeled (Fritz et al., 2022; Li et al., 2022). These findings are also consistent with the results predicted by the BEM and blade-resolved URANS simulation
235 for the DTU-10 MW turbine presented in Sayed et al. (2019). This highlights the importance of using higher fidelity methods when the aeroelasticity of large rotors is considered, or at least to consider the effect of out-of-plane bending on the blades aerodynamics (Fritz et al., 2022; Li et al., 2022), also for steady loads such as those presented in this section.

3.2 Comparison in turbulent flow

To verify the dynamic response of the structure under unsteady loads, a comparison between our framework and OpenFAST
240 is also carried out with a turbulent inflow. The latter consists in the superposition of a uniform flow with $U=9 \text{ m s}^{-1}$ and of a turbulent field generated using the Mann algorithm (Mann, 1998). The parameters of the turbulent field are the integral length scale, here set to $L = 88.5 \text{ m}$, the anisotropy factor $\Gamma = 3.9$, and the turbulence intensity, set to $TI = 6\%$. The turbulent fluctuations are generated in a 3D domain of size $8D \times 2D \times 2D$, with a spatial discretization of 32 pts/ D . In OpenFAST, the turbulent fluctuations are directly interpolated from the 3D domain to the turbine blade nodes and added to the upstream
245 velocity value. In the case of the ALM, the turbulent fluctuations are interpolated to the inflow plane and are then convected to the turbine location. The OpenFAST cases are kept identical to the cases with a uniform inflow. Only the time-step at which OLAF emits a new panel is decreased to 0.1 s to better account for the turbulent fluctuations. The ALM case also remains identical, except that the distance between the turbine and the inflow plane is reduced to $2D$ to reduce the variation of the turbulent fluctuations that occurs during their convection from the inflow to the turbine. The cases run for 400 s to converge
250 the statistics.

The dynamic structural deformation of the blade is considered for this comparison to assess that the flexible ALM correctly captures the variations of the displacements at the relevant frequencies. Figure 5 depicts the power spectral density (PSD) of the tip displacement for the flapwise and edgewise translations, and for the torsion angle. The PSDs are computed using the Welch algorithm with segments of duration equal to 50 s that overlap by half their length (Welch, 1967). The blade natural frequencies
255 are also depicted. These were obtained using the mass and stiffness matrices provided by *BeamDyn* in the rotating undeformed

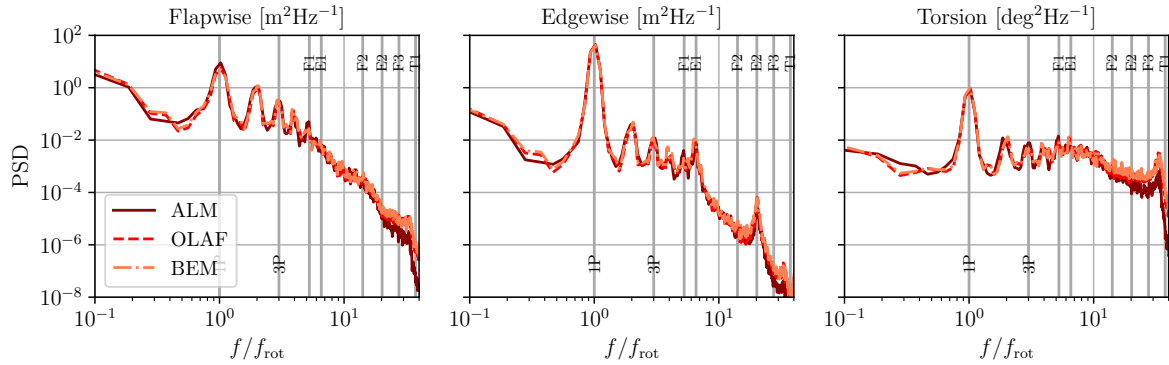


Figure 5. PSD of the tip displacement in the flapwise and edgewise direction and torsional deformation. Comparison between the ALM (dark solid), OLAF (dash) and the BEM (light dash-dot). The vertical lines denote the main frequencies of the system (1P and 3P), and the flapwise (F), edgewise (E) and torsional (T) natural frequencies.

configuration, without accounting for the coupling with the aerodynamic loads. It should be noted that, for a non-linear beam solver such as *BeamDyn*, the blade natural frequencies are slightly affected by the deformation. This difference was here verified to be negligible, such that the natural frequencies do not need to be updated using the blade deformed configuration. A very good agreement is observed between OpenFAST and the ALM. All the methods predict the same magnitude for the peak occurring at the 1P frequency for all three components. Additionally, the peaks of displacement occurring at the edgewise natural frequencies (E1 and E2) are present and reach the same value for all three solvers. The structural response close to the first torsional frequency (T1) is also similar for all methods. All three solvers predict a similar decrease of the frequency at which this peak arises compared to the T1 frequency. This shift is due to the coupling between the aerodynamic forces (that increase linearly with the angle of attack) and the torsion angle. The amplitude of the peak is however slightly smaller for the ALM. Indeed, the values of the PSD at all the higher frequencies (larger than 20P) obtained using the ALM are smaller than those predicted using OpenFAST. This is mostly related to the use of integral velocity sampling for the ALM, which leads to some smoothing of the fluctuations as the velocity is obtained as a weighted average. On the contrary, OpenFAST interpolates the velocity fluctuations directly to the nodes of the aerodynamic solver (BEM or OLAF). However, the amplitude of these differences is limited and the value of the PSD at the affected frequencies is much smaller than at the lower frequencies, which are predominant. Some additional differences in the lower frequency part of the spectrum are related to changes in the turbulent field during its convection from the inflow to the turbine location.

4 Investigation of rigid and flexible rotors in atmospheric conditions

In this section, rigid and flexible rotors are studied with a sheared turbulent wind as inflow, to evaluate the effects of the unsteady aeroelastic effects on the aerodynamic loads and on the wake. To that purpose, the numerical set up consists of a domain of size

275 $12D \times 4D \times 4D$, with a spatial resolution of 64 grid points per D . The location of the turbine hub is $(2D, y_{hub}, 2D)$, where
 $y_{hub} = 150$ m. Although the distance between the turbine and the inflow is small, it has been verified to have a very small effect
on the loads (approximately 1% difference on thrust and 3% difference on power when the distance to the inflow is doubled).
Moreover, the same distance to the inflow is used for each considered case, such that the comparison is not affected. To ensure
280 a valid comparison between the rigid and flexible cases, the rotation speed is imposed at the blade root to $\Omega = 0.75 \text{ rad s}^{-1}$,
which corresponds to the design TSR of 9. The time increment of the flow simulation is set to obtain 360 time-steps per turbine
rotation. Additionally, there are 4 structural sub-steps per flow time-steps. A total of 200 rotations is simulated for each case,
which corresponds to a physical time of 1675 seconds.

The inflow is a neutral ABL generated using the co-simulation technique (as described in Section 2.1). The numerical setup
is described in details in Appendix B. It was designed so as to obtain a time-averaged velocity of $U_{hub} = 10 \text{ m s}^{-1}$ at hub
285 height, and with a TI close to 5%. The obtained profiles of mean velocity and turbulence intensity are also provided in the
Appendix, together with the methodology used to estimate the integral length scales, obtained as 106 m in the streamwise
direction and 89.5 m in the lateral direction.

Three cases are compared in this section. The first case is the “rigid undeformed” rotor, thus with the upwind pre-bend
of the blades. The second case is the flexible rotor, modeled using the flexible ALM that dynamically deforms based on the
290 aerodynamic loads. A third case considers a rigid rotor that includes the mean deformation of the blades, noted as the “rigid
deformed” case. The deformed geometry was obtained by time-averaging the structural displacements obtained in the second
case. This allows to isolate the effect of the time-varying response of the blade on the rotor dynamics and wake.

This analysis is structured in three parts. First, the displacements of the blades are considered. Then, the distribution of the
loads as well as their variation is presented. Understanding these aspects allows to explain the differences observed in the wake,
295 which are presented in the last part of the analysis.

4.1 Structural displacements

The PSD of the displacements is first considered in figure 6. In this section, the presented statistics of the blade displacements
and loads are computed using the last 180 rotations of the simulations. The 20 first rotations are discarded as the wake induction
is not yet converged. The power, thrust and power spectra of the loads were indeed verified to reach statistical convergence
300 after 20 rotations. The presented PSDs are computed using the Welch algorithm. The time-series are divided in sub-segments
of length corresponding to 22.5 rotations that overlap by half their length, resulting in a total of 15 segments. The PSDs are
also computed for each blade and then averaged, resulting in smooth spectra. For all the components of the displacement, the
1P frequency is the most noticeable, as also denoted for smaller turbines in Grinderslev et al. (2021). In the flapwise direction,
the 1P frequency is excited by the rotation of the blade in the mean shear and in the spatially coherent turbulent structures.
305 For the edgewise direction, the excitation of the 1P frequency is mostly attributed to the gravity. In this direction, the peak
at 1P is much more pronounced than the rest of the spectrum, indicating the dominance of the gravity over the aerodynamic
loads. In the torsional direction, the peak at 1P is due to the coupling with the translational degrees of freedom and the effect
of gravity on the deformed blade. The harmonics of the rotation frequency are also important in all spectra, which is consistent

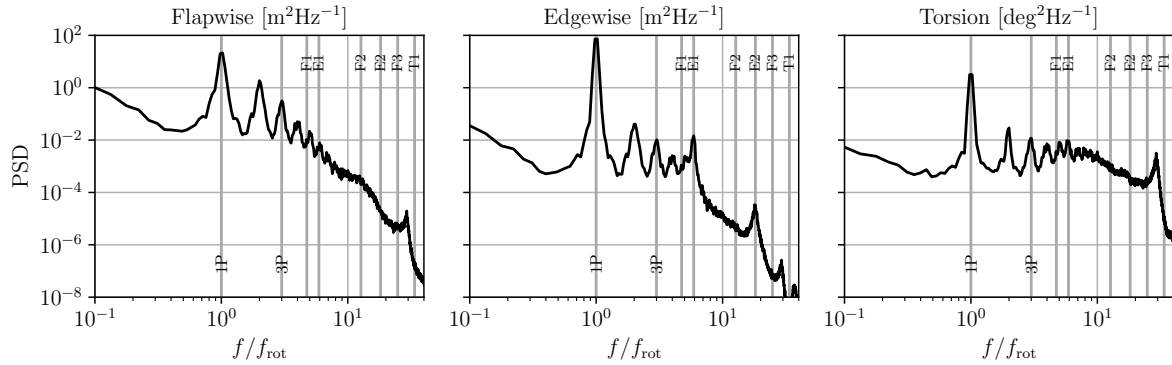


Figure 6. PSD of the tip displacement in the flapwise and edgewise direction and of the tip torsion angle, for the IEA-15 MW turbine with flexible blades in atmospheric conditions. The vertical lines denote the main frequencies of the system (1P and 3P), and the flapwise (F), edgewise (E) and torsional (T) natural frequencies.

with the results of Krüger et al. (2022). Concerning the blade structural frequencies, their excitation depends on the considered
 310 component. In the flapwise direction, the PSD exhibits no particular excitation at the flapwise (F1, F2 or F3) frequencies. Only a small peak is visible near the torsional frequency. The absence of a peak is explained by the high aerodynamic damping of the flapwise mode (Hansen, 2007). This damping is due to fact that the blade flapwise displacement decreases the apparent streamwise velocity on the blade section, hence decreasing the angle of attack and the loads. On the contrary, in the edgewise direction, distinguishable peaks of displacement occur at the edgewise natural frequencies (E1, E2) and close to the torsional
 315 frequency (T1). This is a result of the small aerodynamic damping in this direction, yet the amplitude of the peaks remains small compared to the one occurring at 1P. For the torsional direction, a peak occurs slightly below the T1 frequency, as observed in Section 3.2.

It is also interesting to consider the general shape of the displacements spectra. In the flapwise direction, the PSD follows a general downward slope that is constant through most of the spectrum. In the edgewise direction, a similar trend is noticeable
 320 before the 1P frequency and between the E1 and T1 frequencies. However, for the first harmonics of 1P, the general trend of the PSD remains constant. For the torsional direction, the general shape of the spectrum remains constant across the frequencies. Consequently, in this direction, some non-negligible high frequency modes are observed additionally to the rotation frequency.

As the rotational frequency appears as predominant, it is interesting to investigate the variation of the displacements along one rotation. The mean displacement and standard deviation are represented in Figure 7 as function of the azimuthal angle
 325 (zero representing the blade pointing upwards). The values measured at each angle and over the simulated turbine rotations are also plotted; for each angle, they can be viewed as an approximation of the probability density function (PDF). In the flapwise direction, the minimal blade displacement is reached a few degrees after the blade downwards position. In this region, the PDF also has the smallest spread. Interestingly, the maximal mean flapwise displacement is not reached at the blade upwards position (i.e., 0°), where the flow velocity is maximal, but is rather constant from 0° to 90°. A similar behavior was also

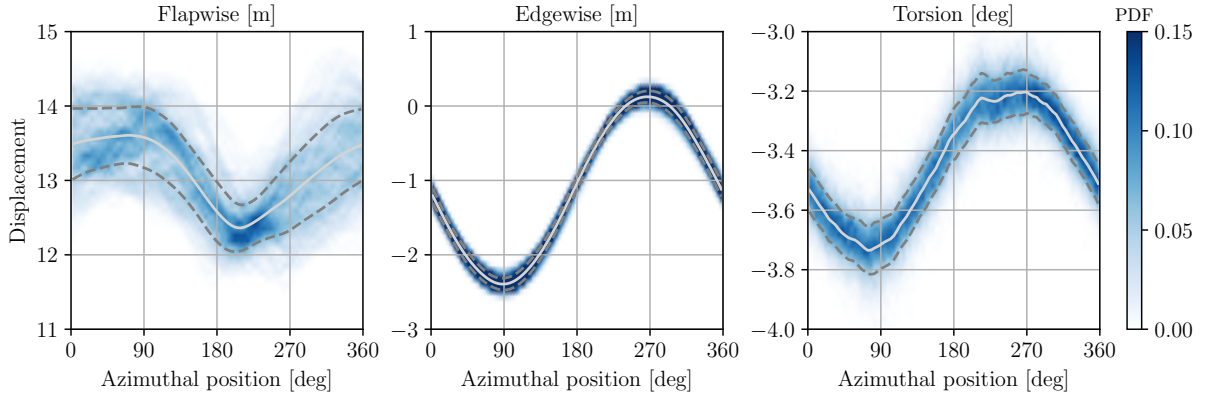


Figure 7. Tip displacement: mean (solid), standard deviation (dash) and values encountered over the turbine rotations (blue, approximating a PDF) as a function of the blade azimuthal angle (as measured from the blade upwards position).

330 observed for a 5 MW turbine by Santo et al. (2019). The PDF also exhibits a larger spread when the blade is in the upper
 half region (i.e., between 270° and 90°). Overall, the flapwise deformation varies significantly along the rotation, oscillating
 between 12.4 m and 13.6 m, primarily due to the mean shear of the flow. This displacement also represents more than 10%
 of the rotor radius, which is quite significant and illustrates the increased blade flexibility compared to smaller turbines. The
 PDF also reveals large variations around the mean displacement, attributable to the turbulent fluctuations. On the contrary, the
 335 edgewise displacement present a nearly perfect sinusoidal variation that is consistent with the gravity loads (Höning et al.,
 2024). The spread around the mean is also very limited, as the variation of the aerodynamic loads is small compared to that
 of the gravity. The torsional deformation follows the same phase as the edgewise displacement. This is due to the effect of the
 gravity loads and of the flapwise deformation, that generates a torsion moment on the structural reference axis. Consequently,
 the torsion angle differs between the left and right part of the rotor, which can lead to some additional load imbalance. The PDF
 340 also presents a larger width than for the edgewise displacement, as a result of the higher sensitivity to the turbulent fluctuations.

The flapwise structural velocity is also considered as it affects substantially the angle of attack and hence the aerodynamic
 forces. In fact, the angle of attack α of a section of the blade can be approximated using the flow and structural velocities
 expressed in the blade root frame by neglecting the effect of the blade curvature on the angle of attack,

$$\alpha \simeq \arctan\left(\frac{(v_x - v_{\text{struct},x})}{(v_{\text{struct},z} - v_z)}\right) + \phi_{\text{struct},y} + \beta, \quad (1)$$

345 where v_x , v_z are the local flow velocities in the x (streamwise) and z (azimuthal) directions, $v_{\text{struct},x}$, $v_{\text{struct},z}$ are the local
 structural velocities in these directions, $\phi_{\text{struct},y}$ is the local torsion angle and β is the local twist angle. All these variables are
 here expressed in the blade root frame. In general, the structural velocity in the z direction mostly consists of the rotational
 velocity Ωr , and the flow velocity is also negligible relatively to that, leading to $(v_{\text{struct},z} - v_z) \simeq \Omega r$. Additionally, since the
 normal velocity is also much smaller than the rotational velocity, $\arctan((v_x - v_{\text{struct},x})/(\Omega r)) \simeq (v_x - v_{\text{struct},x})/(\Omega r)$. As

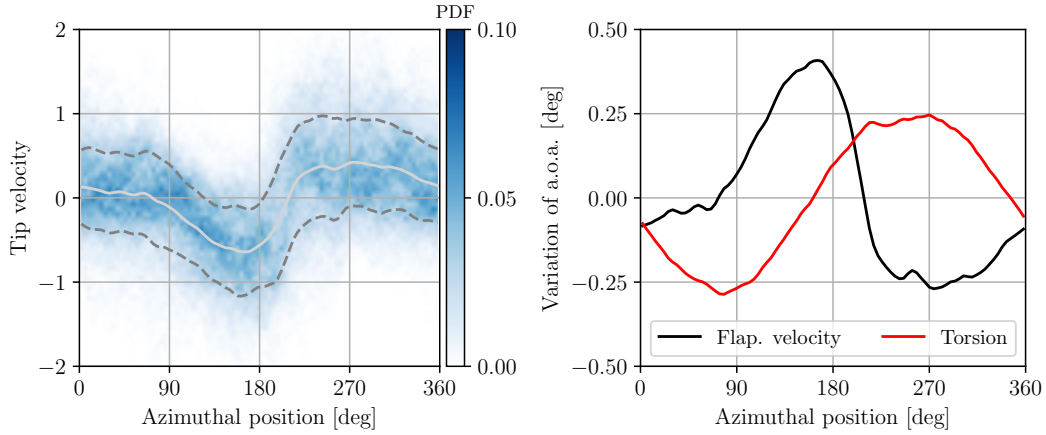


Figure 8. Left: flapwise structural velocity at the tip: mean (solid), standard deviation (dash) and values encountered over the turbine rotations (blue, approximating a PDF) as a function of the blade azimuthal angle. Right: comparison of the impact of the flapwise velocity $-v_{\text{struct},x}/(\Omega r)$ and of the torsion angle $(\phi_{\text{struct},y} - \bar{\phi}_{\text{struct},y})$ on the angle of attack.

350 a result, the expression for the angle of attack is simplified to

$$\alpha \simeq \frac{(v_x - v_{\text{struct},x})}{(\Omega r)} + \phi_{\text{struct},y} + \beta. \quad (2)$$

Consequently, the ratio $v_{\text{struct},x}/(\Omega r)$ has an effect on the angle of attack that is similar to that of the torsion angle. Figure 8 shows the mean flapwise velocity $v_{\text{struct},x}$ has a function of the blade azimuthal angle and the probability density function for each angle. The maximal positive velocity is 0.4 m s^{-1} and is reached in the left region of the rotor. The minimal velocity is
 355 -0.7 m s^{-1} and is reached when the blade is pointing downwards. These values are more important than those reported in Santo et al. (2019) for a 5 MW turbine in atmospheric conditions, which illustrates that the maximal flapwise velocity reached along the rotation likely increases with the rotor size. A large variation of the velocity occurs around the blade downwards position which is attributed to the high mean vertical shear in the lower region of the rotor. The PDF of the flapwise velocity is also quite large around the mean, due to the turbulent fluctuations of the velocity. The figure also shows the contribution of the flapwise
 360 velocity $(-v_{\text{struct},x}/(\Omega r))$ to the variation of the angle of attack at the tip along a rotation. It is compared to the contribution of the torsional angle $(\phi_{\text{struct},y} - \bar{\phi}_{\text{struct},y})$. The two effects are similar in magnitude, and can result in a small variation of the angle of attack up to 0.4° . Their phase is shifted by a quarter of rotation, as the effect on the flapwise velocity mostly depends on the vertical shear, whereas the variation of the torsion follows the same phase as the edgewise displacements (and hence the gravity loads).

365 These displacements are not without consequences over the loads acting on the turbine, which will be presented in the next section.

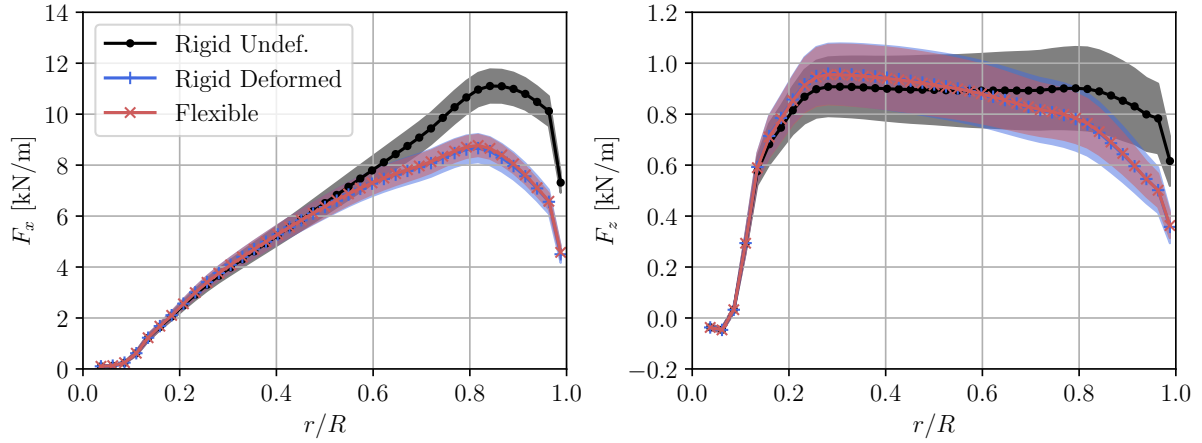


Figure 9. Distribution of the aerodynamic loads along the blade span for the rigid undeformed (black), rigid deformed (blue) and flexible (red) cases. The shaded area represents the standard deviation.

4.2 Comparison of the blade loads

This section presents a comparison of the loads obtained with the flexible and rigid rotors. The focus is here set on the blade loads, presenting both the aerodynamic loads, due to their impact on the wake, and the structural loads, due to their effect on the structural integrity. This choice also follows the decision to maintain a constant rotation speed, primarily to facilitate the comparison between the wakes. In real-world conditions, the turbine controller adjusts the rotation speed and the blade pitch angle, and the three blades are dynamically coupled by their rigid connection with the turbine shaft, which modifies the resulting rotor loads, especially the rotor torque. To assess the impact of these changes, the simulations were also conducted with the controller. The loads and displacements of the individual blades were not noticeably affected, and neither was the wake. However, the spectrum of the rotor torque was modified due to the coupling between the blades and the generator. Consequently, we chose to present the simulation at constant rotation speed and to focus on the individual blade dynamics and on the wake, which were confirmed to remain mostly unaffected by the controller.

The mean load distribution along the blade, depicted for each case in Figure 9, is first examined. The load distribution on the undeformed rotor clearly differs from that of the two cases that include the deformation. In particular, a significant reduction of the mean loads and of their standard deviation is induced by the structural displacement on the outer part of the blade. This results in a substantial reduction of the power and thrust coefficients. The thrust coefficient is reduced by $\simeq 14\%$, going from $C_T = 0.80$ for the undeformed rotor to $C_T = 0.69$ for the deformed cases. Similarly, the power coefficient is reduced by 10%, from $C_P = 0.50$ to $C_P = 0.45$. As anticipated, the rigid deformed and flexible cases exhibit a nearly identical mean forces distribution. However, in the flexible case, the standard deviation presents a slight reduction attributable to the additional compliance of the blade.

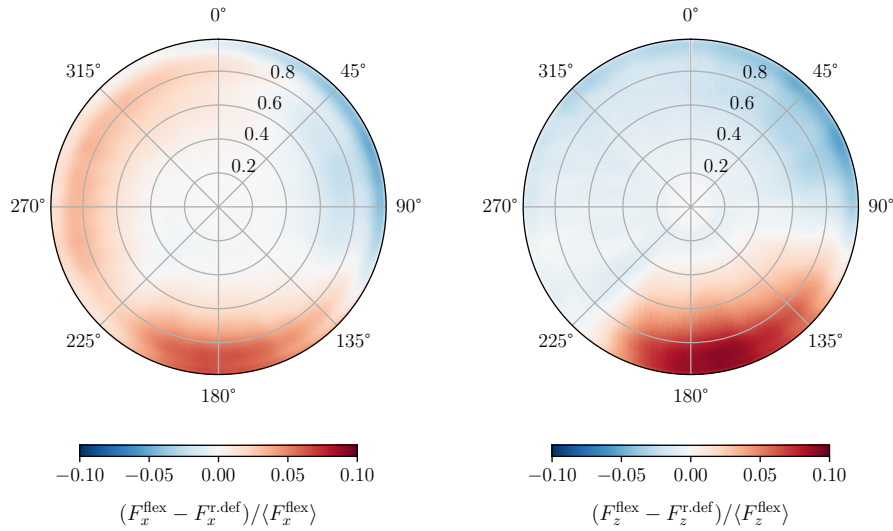


Figure 10. Difference between the aerodynamic force distribution of the flexible case (F^{flex}) and of the rigid deformed case ($F^{\text{r.def}}$) on the rotor plane (front view), normalized by the mean force on the rotor. Left: flapwise forces; right: edgewise forces.

Although the radial distribution of the forces is the same for the rigid deformed and flexible cases, their distribution over the rotor plane varies. Figure 10 depicts the difference between the forces distribution of the two cases. There is a notable difference at the bottom of the rotor in both the flapwise and edgewise directions. In this region, the flexible rotor undergoes more forces, due to the reduced flapwise deflection, and the important upstream blade velocity that increases the angle of attack as observed in figure 8. In the normal direction, there is also a clear asymmetry between the left and right plane of the rotor. The flexible rotor presents higher forces compared to the rigid ones on the left part of the plane, due to the smaller torsion angle on this side. This asymmetry is not visible in the edgewise direction. The observed differences reach a maximum of around 10% on the lower part of the rotor plane, which will also result in a difference of the mean velocity deficit in the near wake, as discussed in the next section.

Figure 11 presents the PSD of the blade root moment in the two main directions. The spectra are given for the aerodynamic forces and for the elastic structural response (which includes the inertia, the centrifugal and gravitational forces). Considering first the aerodynamic forces, one observes that the rotation frequency is still the most important component. The amplitude of the PSD at that frequency differs slightly between the cases, the rigid undeformed case having the highest value and the flexible case the lowest. Large differences also appear close to the natural frequencies. The PSD is much lower close to the main bending frequencies (F1, E1), due to the dynamic response of the blade. In fact, at these frequencies, the blade responds importantly to the variations of the forces and the resulting structural bending tends to smooth these changes. There is also a noticeable increase at the torsional frequency (close to T1) due to the subsequent modification of the angle of attack of the blade. The structural moment does not exhibit a decrease at the bending frequency, as the lower aerodynamic forces are compensated by the inertial loads. In the flapwise direction, the spectrum of this moment is in general slightly smaller in the

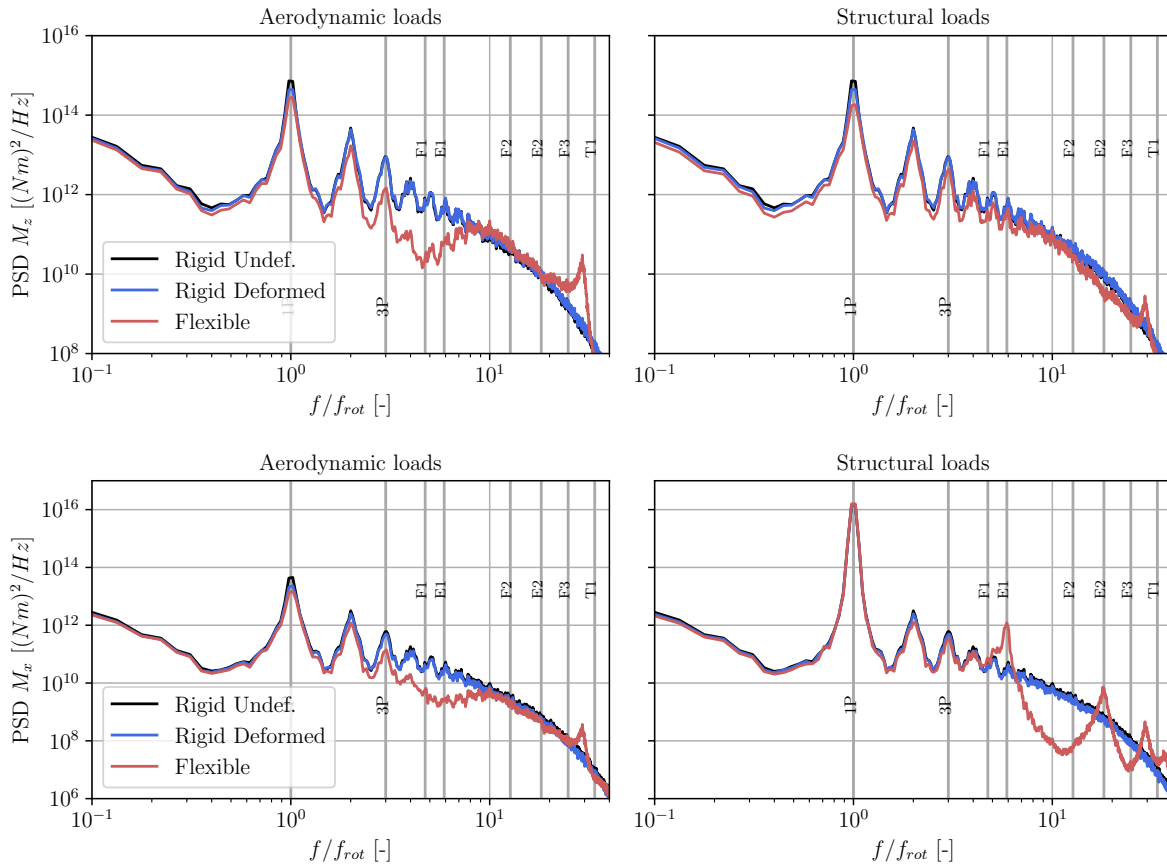


Figure 11. PSD of the blade root moment due to the flapwise forces (M_z , top) and edgewise forces (M_x , bottom). Left: PSD of the moment of the aerodynamic loads; right: PSD of the structural root moment. Comparison between the rigid undeformed (black), rigid deformed (blue) and flexible (red) cases.

405 flexible case. There are also no specific peaks at the natural frequencies due to the high aerodynamic damping in this direction. On the contrary, the edgewise root moment presents high peaks close to its natural frequencies. In this direction, the value of the PSD at the 1P frequency is also much higher than that of the aerodynamic loads, illustrating the importance of the gravity loads. The modification of the spectrum of the root moment can have a direct impact on the lifetime of the turbine and the damage equivalent load calculations, as also obtained in Hodgson et al. (2021). It is therefore necessary to consider dynamic
410 models when assessing the structural integrity of the rotor.

Similarly as for the displacement, the variation of the blade root moment of the aerodynamic forces along the rotation is further investigated, as the 1P frequency was shown to be the most significant. The latter is represented in figure 12. The aerodynamic forces are considered instead of the structural response to remove the influence of the gravity, which would be dominant on the edgewise moment.

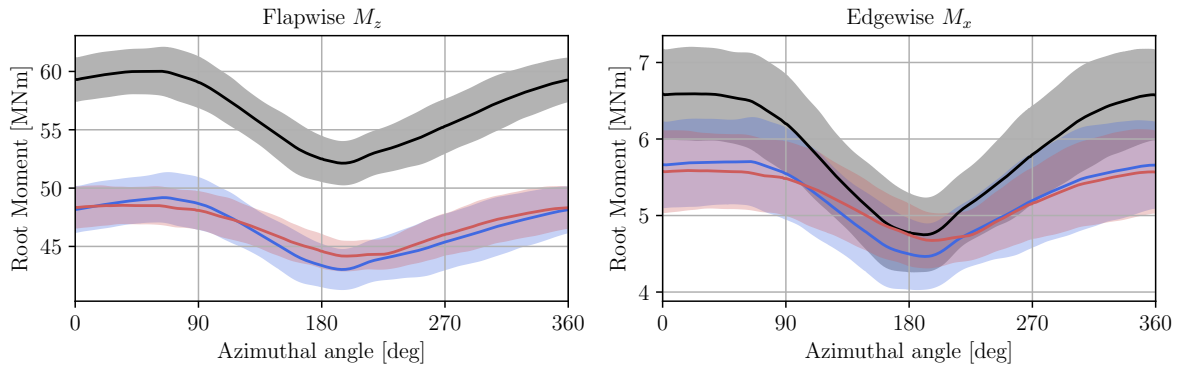


Figure 12. Blade root moment of the aerodynamic forces as a function of the azimuthal angle, and averaged over the turbine rotations: mean value (solid line) and standard deviation (shaded area). Comparison between the rigid undeformed (black), rigid deformed (blue) and flexible (red) cases.

415 The mean flapwise moment acting on the rigid turbine is 21% higher than that obtained in the cases that include the de-
 420 formation, which have a comparable mean value. The amplitude of the deviation along the rotation, defined as $(M_{\max} - M_{\min})/M_{\text{mean}}$, is however similar in both rigid cases (14.0% for the rigid undeformed case and 13.2% for the rigid deformed case). This deviation is reduced to 9.3% in the flexible case, mostly due to a higher minimal value when the blade is in its downwards position. In the edgewise direction, the mean value of the root moment is 12% higher in the rigid undeformed case. The deviation is 31.5% in this case, compared to 23.7% in the rigid deformed case and 17.5% in the flexible case.

Interestingly, there is also a noticeable phase lag between the rigid and the flexible cases. Whereas the rigid case predicts a minimal moment at around $\theta = 195^\circ$, the flexible case predicts a minimum at $\theta = 215^\circ$. This phase lag also applies to the rotor torque and ultimately to the power. It could also have an effect on load alleviation control strategies that uses the root bending moment as input, such as individual pitch control.

425 4.3 Impact on the turbine wake

In this section, the impact of the flexibility over the wake is considered. The wake can be affected in three ways. Firstly, the changes in thrust coefficient C_T affect the total velocity deficit behind the turbine. Secondly, the variation of the load distribution along the blade span described in Section 4.2 changes the shape of the velocity deficit. If the loads decrease more smoothly near the tip, the strength of the tip vortices also decreases. Finally, the displacements of the blade described in
 430 Section 4.1 affect the location of the emission of the tip vortices. Specifically, the tip vortices are generated further downstream due to the flapwise bending, and the flexibility affects the distance between individual tip vortices, potentially modifying their interaction. This section aims at understanding whether these effects have a significant impact over the wake, its stability and the resulting velocity deficit.

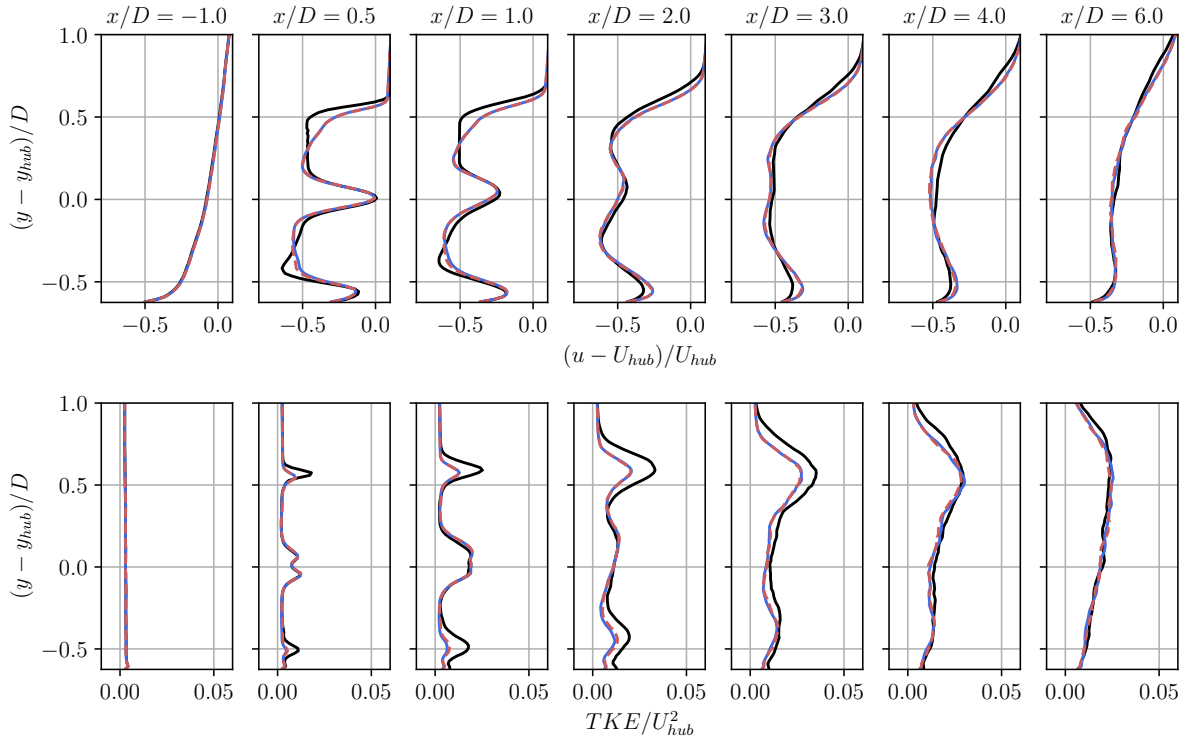


Figure 13. Profiles of mean velocity deficit (top) and turbulent kinetic energy (bottom) in the near wake of the turbine at various downstream locations: rigid undeformed (solid black), rigid deformed (solid blue) and flexible (dash red) cases.

The wake statistics are first considered. The statistics are computed over the last 150 rotations, to ensure that the wake
 435 is developed up to the end of the computational domain before averaging. The discarded first 50 rotations corresponds to approximately 1.5 flow-through times, which was verified to be sufficient to reach a statistically converged flow. The averaging window of 150 rotations then corresponds to approximately 4.4 flow-through times. Figure 13 illustrates the time-averaged velocity deficit and turbulent kinetic energy (TKE) profiles. The differences between the profiles of the mean velocity deficit are comparable to the changes of the mean loads distribution, which are the main source of differences between the wakes.
 440 Behind the tip of the turbine, the deficit is more pronounced in the rigid undeformed case compared to the deformed and flexible cases. Additionally, there is a steeper gradient of mean velocity behind the tip in this case. The TKE is also noticeably higher in the near tip region, which results in a faster turbulent diffusion of the wake. For the rigid undeformed case, the velocity deficit observed 3 and 4D behind the turbine is smaller but more diffuse than in the deformed cases. In the far wake (6D behind the rotor), the velocity deficit and TKE profiles are almost equivalent. The time-averaged velocity deficit and TKE are very similar
 445 between the rigid deformed and flexible cases, which indicates that the unsteady variations around the mean deformation have a limited effect on the time-averaged wake statistics.

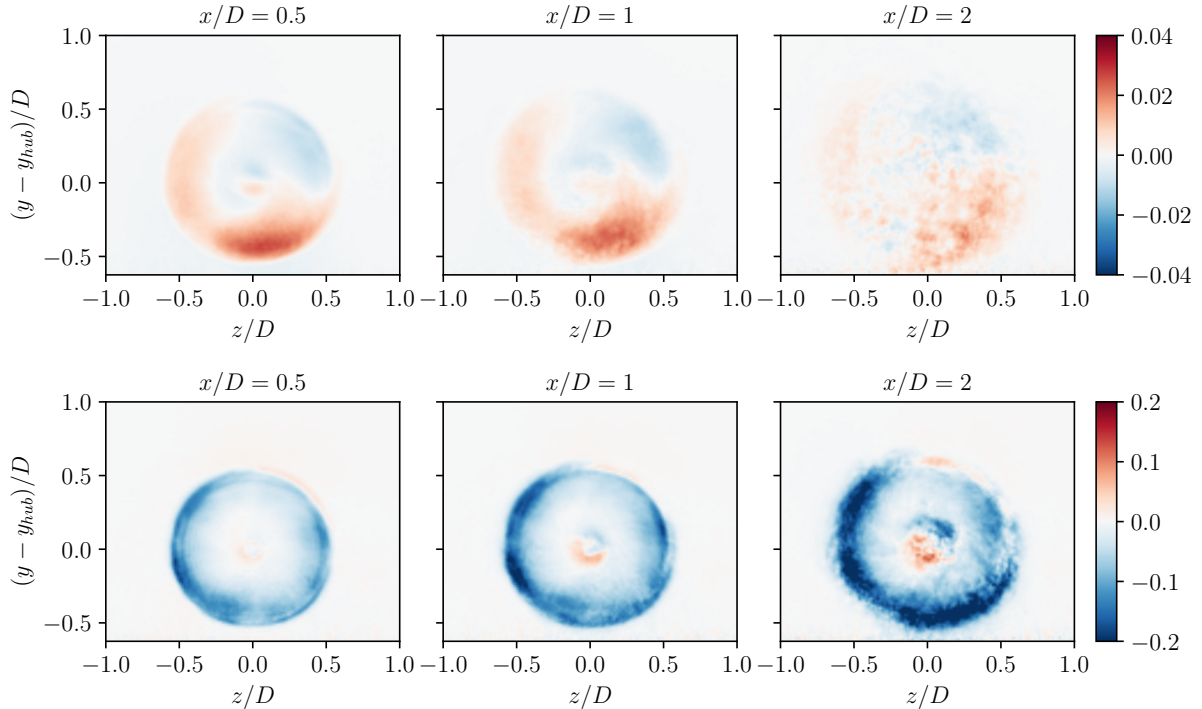


Figure 14. Difference of the mean velocity field (top, $(u_{r.def} - u_{flex})/U_{hub}$) and TKE (bottom, $(TKE_{r.def} - TKE_{flex})/TKE_{hub}$) between the rigid deformed and the flexible cases over vertical planes at several locations behind the rotor.

Some differences between the near wake of the rigid deformed and flexible cases can nevertheless still be observed. Figure 14 presents the difference in mean velocity and TKE over vertical planes behind the rotor. For the mean velocity, the difference of mean velocity behind the rotor ($x/D = 0.5$) is very close to that observed for the blade normal forces on the rotor area (see 450 Figure 10). The small changes in the local thrust result in differences in mean velocity deficit that reach up to 2.5% of the upstream velocity. The most substantial difference occurs behind the bottom of the rotor, where the velocity is significantly higher behind the rigid deformed turbine than behind the flexible turbine. Noticeable differences also exist behind the left and right part of the rotor. At a distance $x/D = 2$, these differences start to vanish due to the wake destabilization that increases the turbulent mixing. The TKE exhibits a different behavior, as it is globally lower in the rigid deformed case compared to the 455 flexible case. The largest differences are observed for $\theta = 90^\circ$ and 270° , which also correspond to the angle with the highest variance of flapwise and torsional displacements. The increase of the TKE in the flexible case is attributed to the unsteady variations of the loads and position that further contributes to the fluctuations in the flow. However, these fluctuations remain moderate compared to the incoming turbulence of the wind, and therefore have a limited impact on the wake behavior.

A snapshot of an instantaneous out-of-plane vorticity field behind the rotor is depicted in Figure 15 on a vertical plane. We 460 stress that the turbulent inflow (furnished by the co-simulation of the ABL) is at exactly the same time t for the 3 cases (i.e., it is synchronized); which allows to compare fine details in the wake. The magnitude of the tip vortices behind the rigid rotors

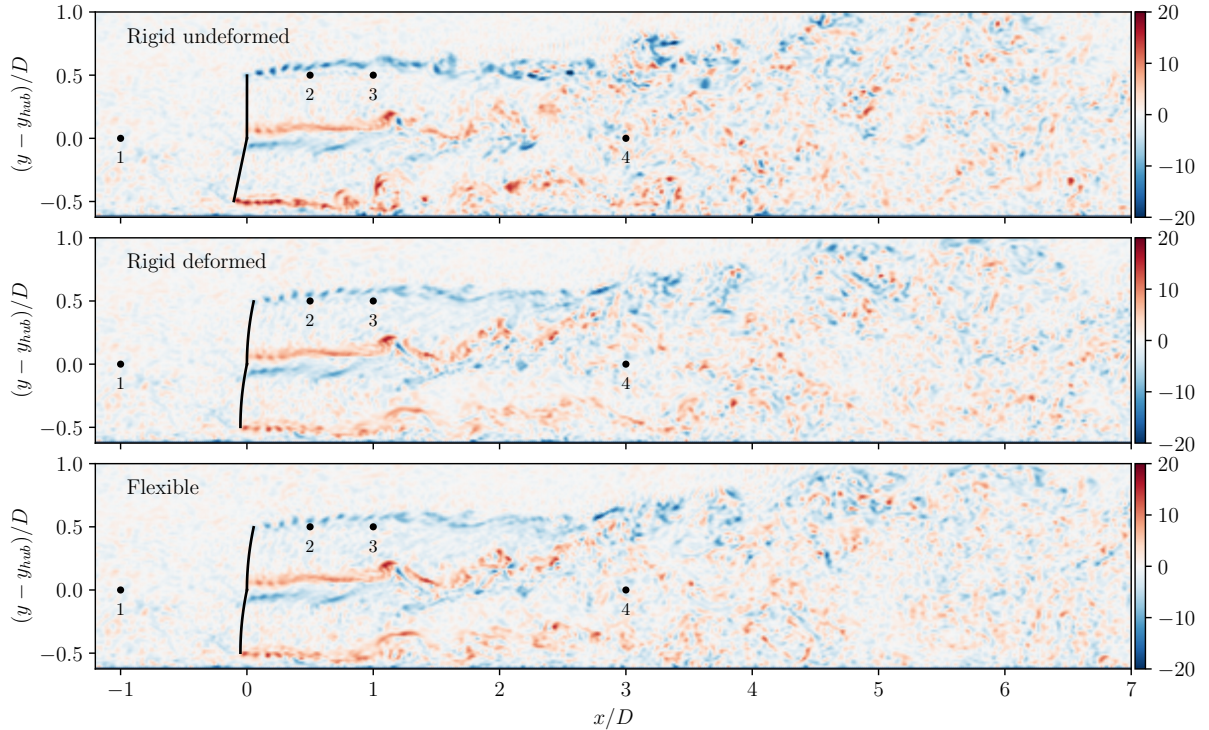


Figure 15. Snapshot of an instantaneous out-of-plane vorticity field ($\omega_z D/U_{hub}$) in the wake of the turbine for the rigid (top), deformed (middle) and flexible (bottom) cases. The inflow is identical for each case. The location of the probes used for the velocity spectra are also shown.

is significantly higher for the rigid undeformed rotor. This results from the higher gradient of the forces observed in the near tip region for the undeformed blades. Additionally, these tip vortices are emitted further upstream compared to those of the deformed cases. As a result, the destabilization of the wake occurs at a smaller distance from the rotor. The rigid deformed and the flexible cases exhibit very similar vortical structures, even in the details. The wakes are almost identical, which further confirms the minimal influence of the unsteady fluctuations of the blade deformations around their mean deformation.

The streamwise velocity is measured at various locations in the wake for each case to compare the flow statistics. Four locations are selected, as depicted in Figure 15. The power spectral density of the streamwise velocity (obtained using the Welch algorithm) is then depicted for each case in Figure 16. The first location is $1D$ upstream of the hub in the induction zone (Probe 1), and the three PSDs are virtually identical, which confirms that the differences in the downstream flow can be fully attributed to the changes in the turbine aerodynamics. The flow velocity is also sampled behind the blade tip at two positions. In the very near wake ($0.5D$ behind the rotor, Probe 2), the blade passing frequency is clearly noticeable for the deformed and flexible cases, whereas it is not visible in the rigid undeformed case. This can be related to the fact that the tip vortices are well separated at this location in the deformed and flexible cases, while they already merged into a vortex sheet in the rigid

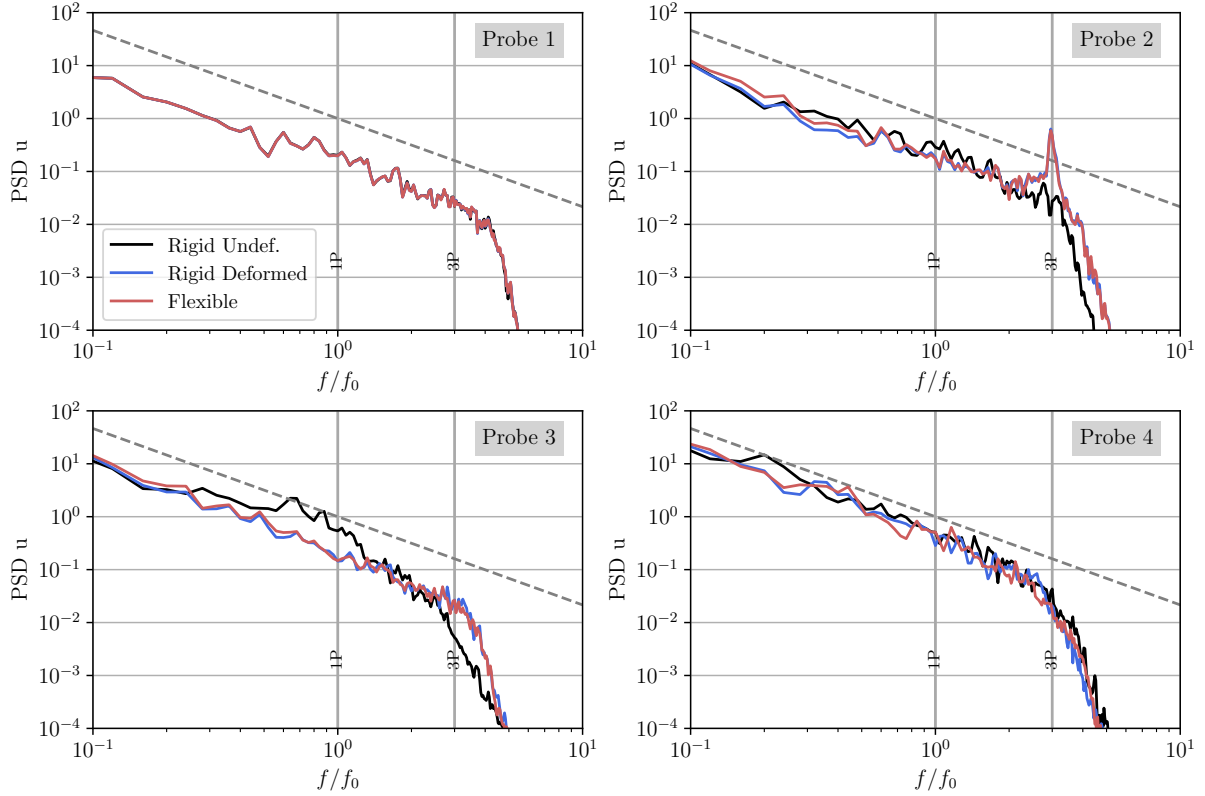


Figure 16. PSD of the streamwise velocity at various locations (as depicted in Figure 15). The dashed line indicates the $(f/f_0)^{-5/3}$ function.

475 undeformed case. Additional differences can be observed further in the wake ($1D$ behind the rotor, Probe 3), where the rigid undeformed case presents a much higher PSD at the frequencies lower than $1P$. This increase is due to the destabilization of the vortex sheet, which results in lower frequency velocity variations. On the contrary, the rigid deformed and flexible cases do not exhibit such an increase, indicating that the wake remains stable at this location. Finally, the velocity is measured further downstream, $3D$ behind the hub (Probe 4), where the influence of the hub vortices is minimal. At this location, the three PSDs
 480 are similar. For each location, the differences between the rigid deformed and the flexible case are small, confirming the limited impact of the unsteady variations on the wake.

The wake recovery rate is measured for each case by computing the power available in the flow P_w on the rotor swept area A_{rot} . The latter is obtained as a function of the streamwise coordinate x as

$$P_w(x) = \frac{1}{2} \rho \iint_{A_{rot}} \bar{u}^3(x, y, z) dy dz. \quad (3)$$

485 The variation of the power (normalized by the power P_0 at the inflow) is depicted in Figure 17. The available power in the wake of the rigid undeformed case is lower in the near wake due to the higher thrust coefficient. It also presents a faster recovery rate

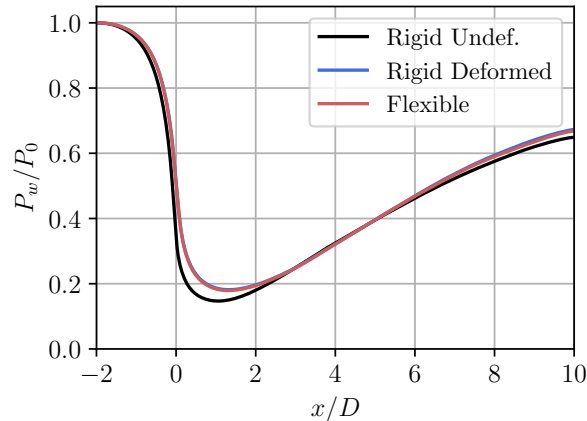


Figure 17. Available power in the wake (normalized by the power at the inflow), computed over the rotor swept area at various streamwise location.

since it reaches the same level as the two other cases for $2 < x/D < 6$. However, in the far wake, it is also slightly lower than in the rigid deformed flexible and cases. These two cases again present almost identical statistics.

This analysis shows the necessity to include the mean deformation to accurately capture the near wake, but also predicts
 490 a minimal effect of the unsteady variations of the displacements and loads around their mean. The spatial resolution of the presented simulations is $64 \text{ pts}/D$, corresponding to 3.75 m , which is larger than the variation of the displacements along the mean deformed configuration. To further assess the impact of the small variations, it is important to verify that the resolution of the flow simulations is sufficient. The next section therefore assesses the effect of the spatial resolution over the loads and near wake dynamics.

495 5 Investigation of the impact of the spatial resolution

In this section, the results obtained with a spatial resolution of $64 \text{ grid points per diameter}$ are compared to those of a higher resolution simulation to assess whether the small deviations of loads and displacement around the mean are sufficiently resolved. The case of a flexible rotor is therefore reconsidered with a grid resolution twice as fine, corresponding to $128 \text{ grid points per } D$. The time-step is also divided by two to maintain the CFL constant. The mollification of the ALM forces is
 500 maintained constant relatively to the grid size (i.e., $\sigma/h = 2$), and is thus two times smaller for the highest resolution. The resolution of the precursor simulation is increased similarly, and the smaller scales of the turbulence are obtained by restarting the ABL simulation at the new resolution and converging it during $\simeq 25$ flow through times. The simulation with the resolution of $64 \text{ pts}/D$ is also performed using the same precursor simulation, which is interpolated to the coarser resolution at the inflow plane. This ensures a valid comparison between the two simulations.

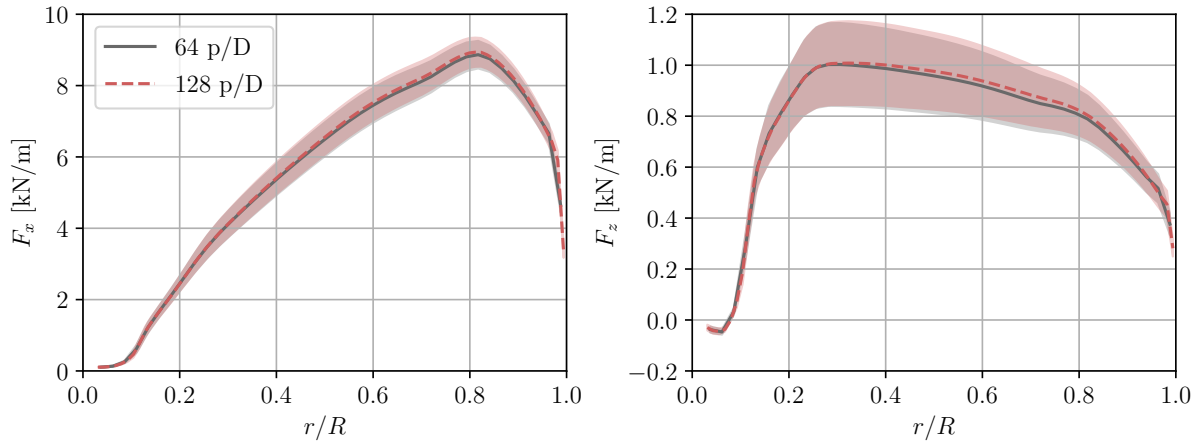


Figure 18. Distribution of the aerodynamic loads along the blade span for the initial resolution (gray) and the increased resolution (red). The shaded area represents the standard deviation.

505 The mean forces distribution on the blades is depicted for both resolutions in Figure 18. The two distributions and their variances are very close. The thrust coefficient C_T is 0.687 for the simulation with 64 pts/ D , and it slightly increases to 0.692 for 128 pts/ D (+0.7%). Similarly, the power coefficient increases from 0.439 to 0.445 (+1.3%). The general shape of the distribution remains consistent between the two simulations, also near the tip, which suggests a sufficient discretization of the blade and of the wake.

510 The variation of the aerodynamic forces and of the structural root moment are also depicted in figure 19. The presented PSDs match perfectly until the E1 frequency. For higher frequencies, the loads predicted using 128 pts/ D are higher. This is due to the additional unsteadiness induced by the smaller turbulent scales that are resolved up to a higher frequency when at high resolution, and to the smaller mollification size that reduces the smoothing induced by the integral velocity sampling. The magnitude of the PSD at these high frequencies is however much lower than that of the small frequencies, hence it is
 515 unlikely that this additional part of the spectrum significantly affects the fatigue of the blades and the wake. The peaks of the PSD located at the E2 and T1 frequencies are also obtained in both cases, indicating that the main components of the structural response are not significantly impacted by the resolution.

Figure 20 presents the instantaneous vorticity field behind the rotor with the two resolutions. We stress again that the turbulent inflows are at the same time for both resolutions. The same velocity field obtained at a resolution of 128 pts/ D and at the same time t are used at the inflow of both simulations. The only difference is that the inflow is interpolated from 128 pts/ D to 64 pts/ D at the inflow plane of the coarser simulation. At higher resolution, the tip vortices have a smaller core size and hence a higher vorticity at their center (since they have essentially the same circulation in both cases). The hub vortices are also better resolved. The shed vortex sheet behind the outer part of the blade is also distinguishable. However, the larger structures of the wake are similar in both cases. This results in virtually identical velocity deficits as depicted in figure 21. The TKE has a higher
 520

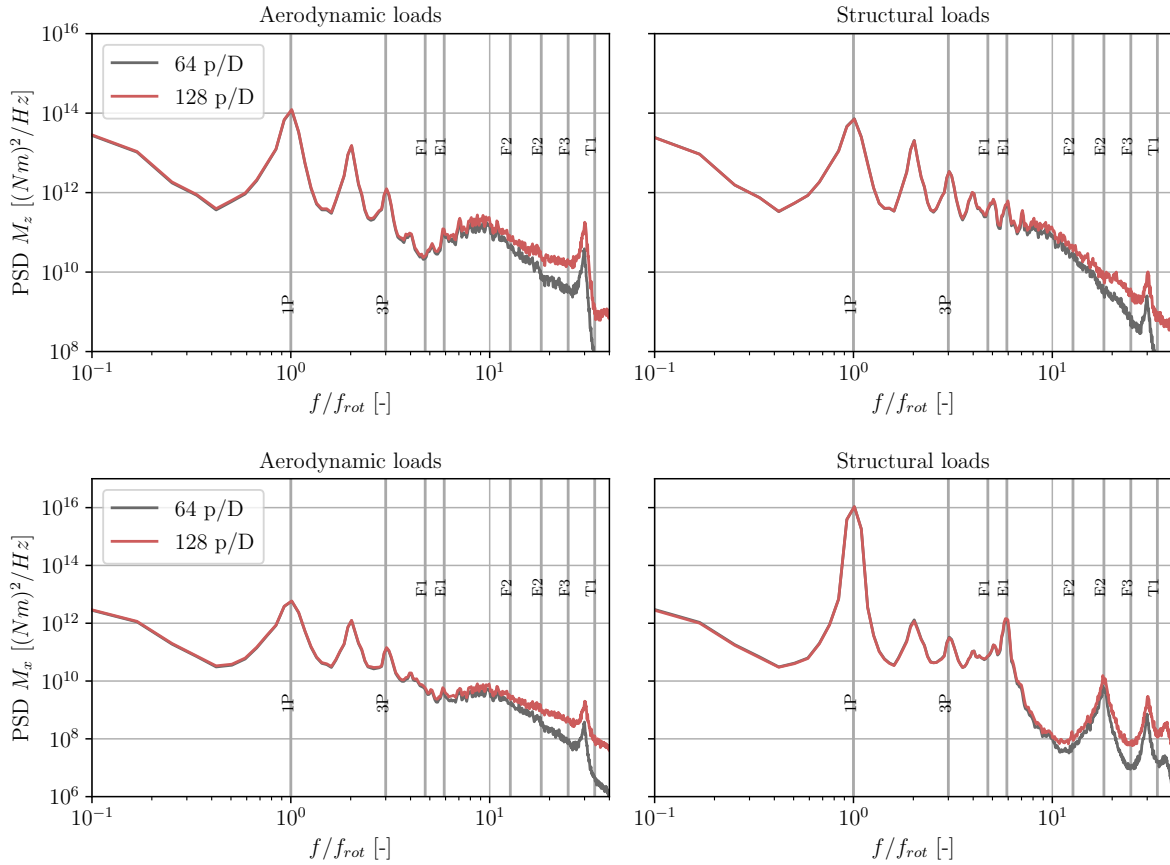


Figure 19. PSD of the blade root moment due to the flapwise forces (M_x , top) and edgewise forces (M_z , bottom). Left: PSD of the moment of the aerodynamic loads; right: PSD of the structural root moment. Comparison between two resolutions : 64 pts/D (gray) and 128 pts/D (red).

525 value behind the hub and in the near tip regions, which results from the sharper mollification and the smaller scales captured by the simulation. However, this does not affect the mean velocity deficit.

The PSD of the streamwise velocity at various locations in the domain is also compared for both resolutions. The locations where the flow velocity is sampled are depicted in Figure 20 and the obtained spectra are shown in Figure 22. The first spectra are obtained using the streamwise velocity measured $1D$ upstream of the hub (Probe 1). At this location, the PSD obtained for the simulation with 64 pts/D decreases much faster at higher frequencies, as expected from the smaller LES cut-off frequency. There are also some slight differences below the cut-off frequency due to the interpolation at the inflow from the ABL with 128 pts/D resolution to the LES with 64 pts/D resolution, and the variation occurring during the convection of the turbulence between the inflow and the sampling location. In the near wake, the PSD of the velocity measured $0.5D$ behind the blade tip (Probe 2) is very similar between the two resolutions (except at the highest frequencies). When measuring $1D$ downstream

530

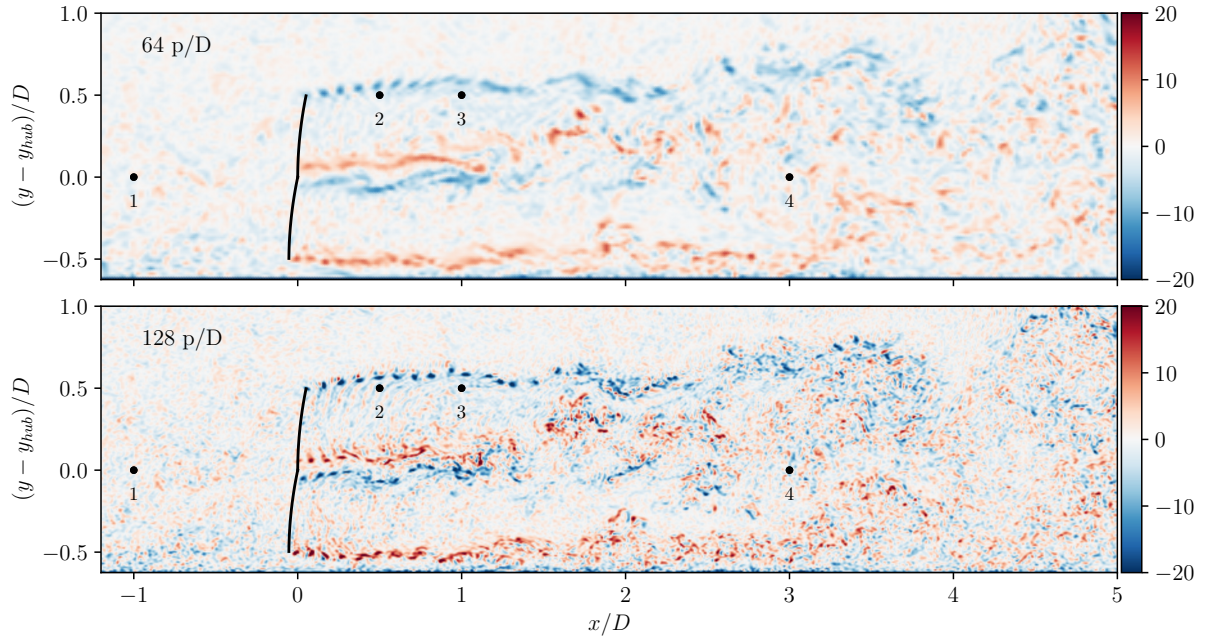


Figure 20. Snapshot of an instantaneous out-of-plane vorticity field ($\omega_z D/U_{hub}$) in the wake of the turbine for the 64 pts/D resolution (top) and the 128 pts/D resolution (bottom) cases. The inflow is identical for each case. The location of the probes used for the velocity spectra are also shown.

535 of the blade tip (Probe 3), the peak of the PSD obtained for the simulation with 128 pts/D is more pronounced near the 3P
 540 frequency, due to the more distinct tip vortices, whereas the tip vortices have merged into a vortex sheet in the simulation with
 64 pts/D. Further in the wake, 3D behind the hub (Probe 4), the spectra are in good agreement at the lower frequencies, and
 only show deviations at the higher frequencies.

6 Conclusions

540 This work presented an investigation of the effect of the flexibility of the blades over the loads and the wake for the large IEA 15-
 MW reference wind turbine. A flexible actuator line method (ALM), coupled to the non-linear structural solver *BeamDyn*,
 is used in large eddy simulation (LES) to compute the unsteady aerodynamic forces exerted by the turbulent inflow along
 each blade, and their influence over the flow. This methodology leverages the LES capabilities to simulate realistically the
 unsteadiness of the inflow and the wake produced by the turbine, so as to quantify the effect of the structural blade deformations
 545 on the loads and the wake.

The results obtained using the flexible actuator line method are first compared to those obtained using OpenFAST. In uniform
 flow, the free-vortex wake model of OpenFAST and the present flexible ALM predict very similar distributions for the forces,
 and which are slightly higher than those predicted using a BEM in the tangential direction. The effect of the deformation of the

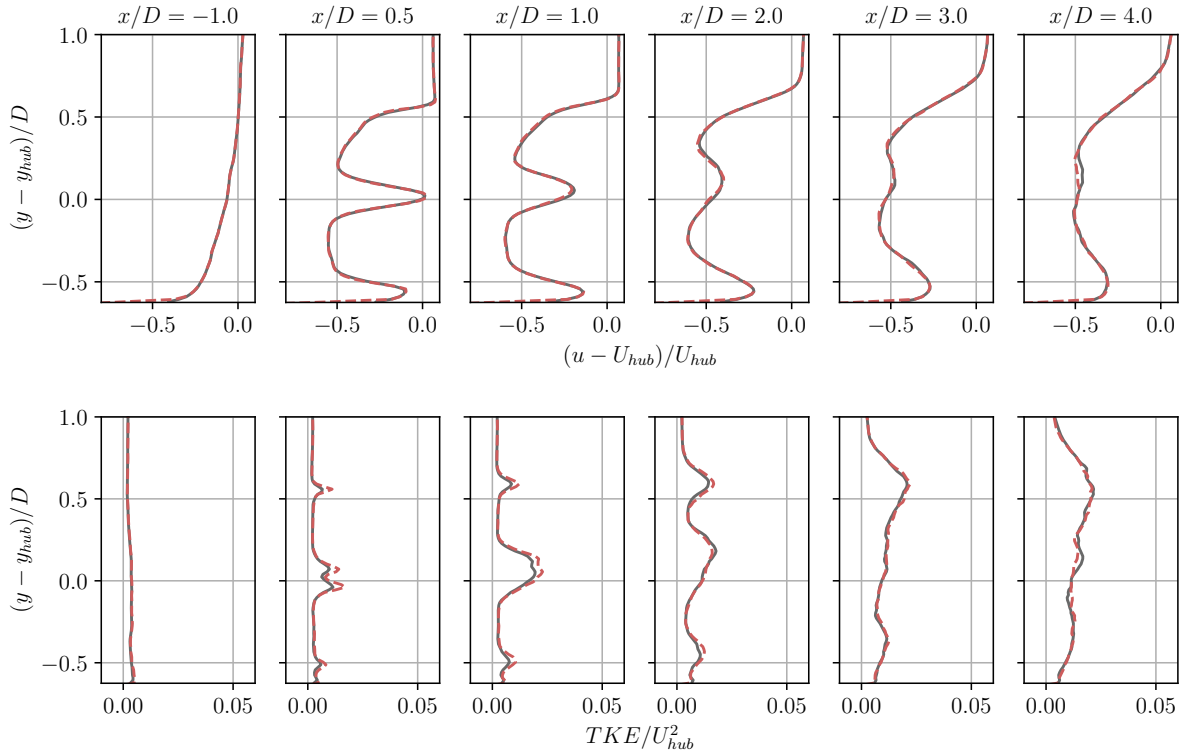


Figure 21. Profiles of mean velocity deficit (top) and turbulent kinetic energy (bottom) in the near wake of the turbine at various downstream locations. Comparison between the 64 pts/ D (gray) and 128 pts/ D (dashed red) resolutions.

blades on the time-averaged loads is also predicted similarly by OLAF and the ALM. The magnitude of this effect is larger than
550 that predicted by the BEM, which indicates that higher fidelity aerodynamic models are necessary to account for the effect of
large displacements on the blade aerodynamics. Comparisons carried using a turbulent inflow without mean shear (generated
using the Mann algorithm) show that the power spectral density (PSD) of the blade displacements are very similar for all three
methods, which confirms that the flexible actuator line model is able to correctly capture the structural dynamics.

The displacement and loads of the blades are then investigated in a turbulent atmospheric boundary layer (generated using a
555 co-simulation). Significant flapwise and torsional displacements are observed, that importantly modify the aerodynamics of the
blades. The resulting thrust coefficient decreases by 14% and the power coefficient by 10% compared to the rigid undeformed
case. Including the mean deformation while keeping the rotor rigid allows to correctly recover the mean load distribution along
the blade, which leads to thrust and power coefficients equivalent to those obtained using the flexible actuator line method.
However, the variation of the loads during the blade rotation is different, especially close to the blade downwards position due
560 to the high mean shear of the flow. Moreover, the aerodynamic loads and the structural response at the blade natural frequencies
are noticeably affected by the flexibility. We also show that the variation of the angle of attack due to the flapwise blade velocity
is significant, and of the same order of magnitude as that due to the blade torsion.

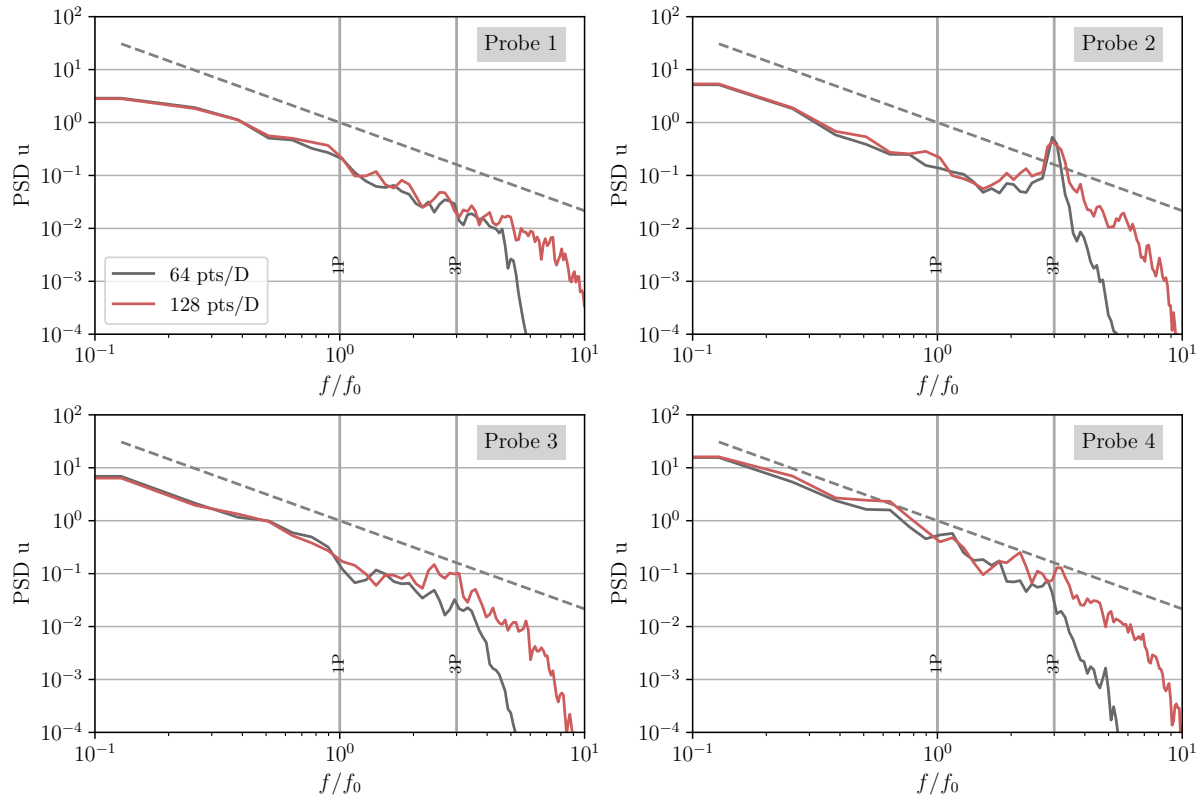


Figure 22. PSD of the streamwise velocity at various locations (as depicted in Figure 20). Comparison between the 64 pts/ D (gray) and 128 pts/ D (red) resolutions.

The wake behind the turbine is then considered. The results show that it is essential to include the mean deformation of the blade to obtain the correct mean velocity deficit and profile of turbulent kinetic energy. Once the mean deformation is added, the differences between the rigid deformed and the flexible cases are limited. In the near wake, the time-averaged velocity obtained in the flexible case is up to 4% slower at the bottom of the rotor swept area than in the rigid deformed case. The turbulent kinetic energy is slightly higher over the rotor area, which results from the unsteady variations of the loads and displacements. However, these changes do not affect significantly the global wake behavior.

Finally, the effect of the LES flow solver resolution over the wake is investigated by increasing the spatial discretization to 128 grid points per diameter. The mean load distribution is comparable to that obtained using the resolution with 64 grid points per diameter. The PSD of the root moment is also identical up to the first edgewise frequency. For the higher frequencies, a difference in magnitude is observed due to the higher frequency fluctuations captured by the LES (due to the twice higher cut-off wavenumber of the grid). A snapshot of the wake vorticity field shows tip vortices with a smaller core size and hence a higher vorticity at their center, and smaller turbulent scales in the flow. However, the time-averaged velocity deficits are largely similar between the two simulations. The TKE is higher behind the blade root and tip at high resolution, yet this does not

impact the turbulent wake diffusion rate. As a result, it is unlikely that a higher resolution would significantly increase the impact of the unsteady displacements and load variations over the wake. It would however be necessary if the spectrum of the loads must be obtained at high frequencies.

580 The impact of the structural deformations over the loads and wake of a large 15 MW turbine is thus significant. These effects consist in a reduction of the thrust and power coefficients, a variation of the load distribution over the blade, and a modification of the spectrum of the blade root moments. These changes, in turn, substantially affect the near wake by altering the profiles of the velocity deficit and turbulent kinetic energy. In the relatively steady operating conditions considered in this paper (i.e., constant time-averaged wind velocity, turbulence intensity and rotation speed), the proper mean load distribution and wake behavior can be obtained using rigid blades but only when adjusting their geometry to incorporate their mean structural
585 deformation. The latter was here obtained by time-averaging the structural deformation produced by our fully coupled unsteady simulations; but it could also be obtained in a preprocessing step, using alternative aeroelastic simulation tools. This then removes the need for the unsteady coupling of the structural solver and the actuator line of the LES solver, thereby slightly reducing the computational cost. However, the unsteady variations around the mean would still differ compared to those of the fully coupled simulation, resulting in a different spectrum of the loads. It is hence recommended to include the structural
590 dynamics of the blades if the unsteady variation of the loads is of interest, particularly for blade structural integrity assessment, or to assess the benefits of load alleviation control methods.

Code and data availability. The LES flow solver BigFlow is not publicly available. The presented simulations results are available upon request.

Appendix A: Parallel implementation of the ALM and structural solver

595 The following appendix describes in more details the strategy employed for parallelizing the computations related to the ALM and the structural solver. A separate subcommunicator is defined for each wind turbine, which is split from the main communicator based on the turbine location. Any process containing a grid point closer to the hub than a distance D is included in the turbine communicator. As the subcommunicators of each turbine generally comprise distinct set of processors, the tasks related to the ALM and the structural solver can be performed concurrently for each turbine. The different steps
600 performed on the local set of processes are shown in Figure A1. The subcommunicator is first used to sample the velocity within a restricted region of the physical domain, thereby decreasing the communication overhead. The aerodynamic forces are computed on the root processor using the sampled velocities. Subsequently, the forces are broadcasted to the structural solver, which executes one instance of *BeamDyn* per blade on different processors. The time-integration of the blade dynamics is therefore performed in parallel, and the resulting root moments of each blade are sent to the root process. The latter computes
605 the drivetrain dynamics and the controller commands at each structural sub-step. The beam solver only takes the hub azimuth and the pitch angle (and their time derivatives) as input and only needs to provide the forces and moments on the hub as

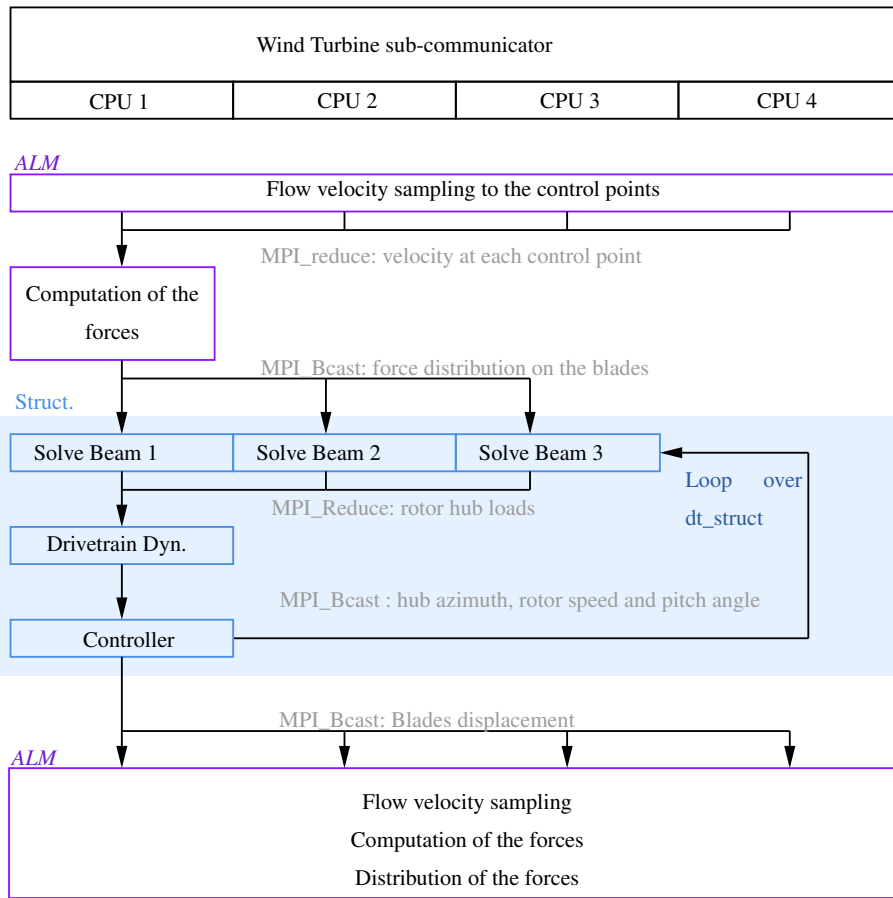


Figure A1. Schematic of the structural coupling.

output. Consequently, the overhead of the added communications required to solve the blades dynamics in parallel is largely overcome by the benefits of the parallelization. After completion of the sub-steps, the blade displacements are broadcasted to all the processors of the subcommunicator to be used for the reevaluation of the forces and their distribution. The following parallelization allows to keep the computational cost of the ALM and of its coupling to *BeamDyn* reasonably low, and provide an efficient scaling in the case of multiple turbines.

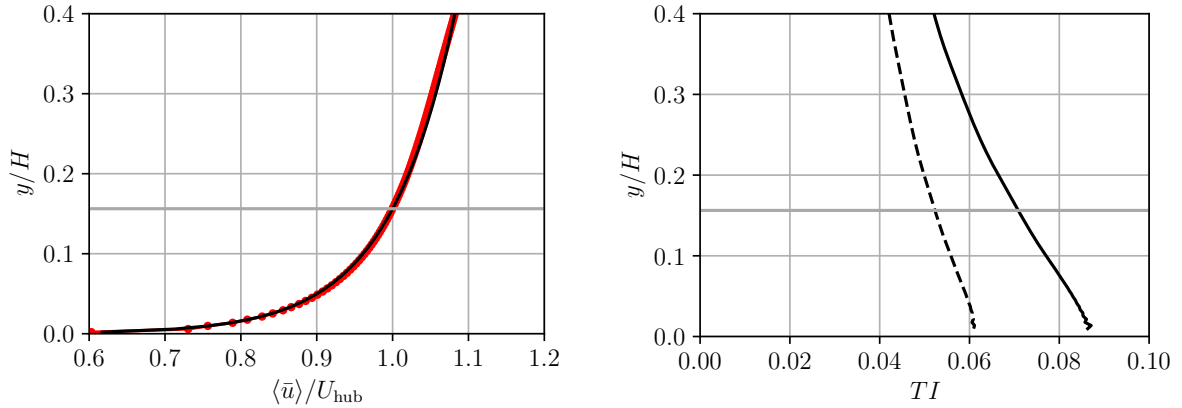


Figure B1. Top: profile of the obtained mean streamwise velocity (dotted red), and its comparison to a logarithmic profile (solid black). Bottom: profile of the turbulence intensity based on the streamwise velocity (solid) and on the three velocity components (dashed). The horizontal gray line indicates the hub height.

Appendix B: Statistics of the simulated atmospheric boundary layer

This section presents the statistics of the neutral ABL that is used as inflow for the wind turbines. It is here obtained by simulating a turbulent half channel flow of height $H = 4D$; hence $H = 960$ m. The flow is driven using a pressure gradient
615 $(-dp/dx)/\rho = 1.148e-04 \text{ m s}^{-2}$ (with $\rho = 1.225 \text{ kg m}^{-3}$ for air). The lateral boundary conditions are periodic. The upper boundary condition is a no-slip condition. At the ground, a wall model is used. The latter imposes the shear stress at the wall using the law of the wall for a rough wall,

$$u(y) = \frac{u_\tau}{\kappa} \log\left(\frac{y}{y_0}\right), \quad (\text{B1})$$

with $\kappa = 0.385$ and $y_0 = 0.0016$ m. The computational domain is $8D \times 4D \times 4D$, and is discretized using a uniform structured
620 mesh with a resolution of 64 grid points per D . The time-step is set to $dt = 0.05$ s and the simulation is run for 584 flow-through times $t^* = tU_{\text{hub}}/(8D)$ before it reaches convergence. The following statistics are then computed over $\simeq 100$ flow-through times.

The obtained profile of the mean streamwise velocity and of the turbulence intensity are shown in figure B1. The mean velocity profile indeed corresponds to a logarithmic profile with $u_\tau = 0.332 \text{ m s}^{-1}$, and the turbulence intensity decreases
625 linearly with height. The mean velocity of 10 m s^{-1} is obtained at the hub, as well as a TI of $\simeq 5\%$ when computed using the three velocity components. There are some small oscillations of the TI near the ground resulting from the large gradients at the wall. However, these oscillations are located at the bottom of the domain and do not affect the rotor region. The auto-correlation functions of the streamwise velocity, $\rho_{u,u}^x$ and $\rho_{u,u}^z$ in the streamwise and lateral directions respectively, are also depicted in figure B2. These are used to compute the integral length scale in the streamwise and lateral directions, L_u^x and L_u^z , obtained by

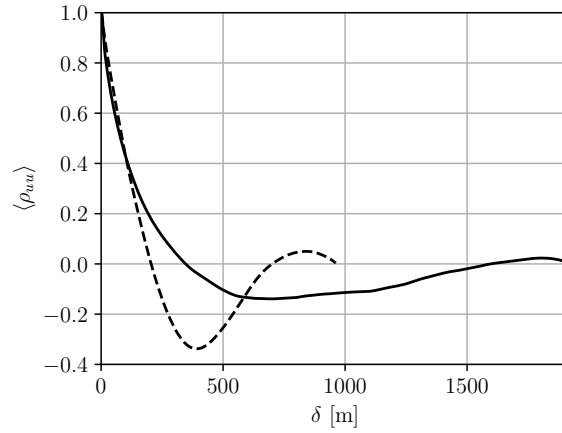


Figure B2. Auto-correlation functions of the streamwise velocity in the streamwise ($\langle \rho_{uu}^x \rangle$, solid) and lateral ($\langle \rho_{uu}^z \rangle$, dash) directions. The values are averaged over the horizontal plane at hub height

630 integration (Stanislawski et al., 2023):

$$L_u = \int_0^{\hat{\delta}} \langle \rho_{u,u}(\delta) \rangle d\delta, \quad (\text{B2})$$

where $\hat{\delta}$ is the distance where the correlation function is smaller than 0.05. This leads to $L_u^x = 106 \text{ m} = 0.44D$ and $L_u^z = 89.5 \text{ m} = 0.37D$.

635 *Author contributions.* FT, PC and GW conceptualized this research and established the methodology. FT developed the software for the coupling, ran and post-processed the simulations, with the help of PC and GW for the investigation process. FT prepared the original draft with contribution from all authors, which was then reviewed by PC and GW. GW provided funding.

Competing interests. The authors report no conflict of interests

640 *Acknowledgements.* The authors would like to thank Dr. Matthieu Duponcheel and Dr. Maud Moens for their advices and help at multiple stage of this research. The research funding was provided in the frame of the PhairywinD project funded by the Belgian Federal Government under the Energy Transition Fund. Computational resources have been provided by the Consortium des Équipements de Calcul Intensif (CÉCI), funded by the Fonds de la Recherche Scientifique de Belgique (F.R.S.-FNRS) under Grant No. 2.5020.11 and by the Walloon Region. The present research also benefited from computational resources made available on Lucia, the Tier-1 supercomputer of the Walloon Region, infrastructure funded by the Walloon Region under the grant agreement n°1910247.

References

- 645 Caprace, D.-G., Chatelain, P., and Winckelmans, G.: Lifting Line with Various Mollifications: Theory and Application to an Elliptical Wing, *AIAA Journal*, 57, 17–28, <https://doi.org/10.2514/1.J057487>, 2019.
- Churchfield, M. J., Schreck, S. J., Martinez, L. A., Meneveau, C., and Spalart, P. R.: An Advanced Actuator Line Method for Wind Energy Applications and Beyond, 35th Wind Energy Symposium, p. 1998, <https://doi.org/10.2514/6.2017-1998>, 2017.
- Dag, K. O. and Sørensen, J. N.: A New Tip Correction for Actuator Line Computations, *Wind Energy*, 23, 148–160, 650 <https://doi.org/10.1002/we.2419>, 2020.
- Degroote, J.: Partitioned Simulation of Fluid-Structure Interaction, *Archives of computational methods in engineering*, 20, 185–238, <https://doi.org/10.1007/s11831-013-9085-5>, 2013.
- Della Posta, G., Leonardi, S., and Bernardini, M.: A Two-Way Coupling Method for the Study of Aeroelastic Effects in Large Wind Turbines, *Renewable Energy*, 190, 971–992, <https://doi.org/10.1016/j.renene.2022.03.158>, 2022.
- 655 Della Posta, G., Leonardi, S., and Bernardini, M.: Large Eddy Simulations of a Utility-Scale Horizontal Axis Wind Turbine Including Unsteady Aerodynamics and Fluid-Structure Interaction Modelling, *Wind Energy*, 26, 98–125, <https://doi.org/10.1002/we.2789>, 2023.
- Dose, B., Rahimi, H., Herráez, I., Stoevesandt, B., and Peinke, J.: Fluid-Structure Coupled Computations of the NREL5MW Wind Turbine by Means of CFD, *Renewable Energy*, 129, 591–605, <https://doi.org/10.1016/j.renene.2018.05.064>, 2018.
- Duponcheel, M., Bricteux, L., Manconi, M., Winckelmans, G., and Bartosiewicz, Y.: Assessment of RANS and Improved Near-Wall Model- 660 ing for Forced Convection at Low Prandtl Numbers Based on LES up to $Re_\tau=2000$, *International Journal of Heat and Mass Transfer*, 75, 470–482, <https://doi.org/10.1016/j.ijheatmasstransfer.2014.03.080>, 2014.
- Fingersh, L., Hand, M., and Laxson, A.: Wind Turbine Design Cost and Scaling Model, Tech. rep., National Renewable Energy Lab.(NREL), Golden, CO (United States), 2006.
- Fritz, E. K., Ferreira, C., and Boorsma, K.: An Efficient Blade Sweep Correction Model for Blade Element Momentum Theory, *Wind Energy*, 665 25, 1977–1994, <https://doi.org/10.1002/we.2778>, 2022.
- Gaertner, E., Rinker, J., Sethuraman, L., Zahle, F., Anderson, B., Barter, G. E., Abbas, N. J., Meng, F., Bortolotti, P., Skrzypinski, W., et al.: IEA Wind TCP Task 37: Definition of the IEA 15-Megawatt Offshore Reference Wind Turbine, Tech. rep., National Renewable Energy Lab.(NREL), Golden, CO (United States), 2020.
- Grinderslev, C., Sørensen, N. N., Horcas, S. G., Troldborg, N., and Zahle, F.: Wind Turbines in Atmospheric Flow: Fluid–Structure Interaction 670 Simulations with Hybrid Turbulence Modeling, *Wind Energy Science*, 6, 627–643, <https://doi.org/10.5194/wes-6-627-2021>, 2021.
- Hansen, M. H.: Aeroelastic Instability Problems for Wind Turbines, *Wind Energy: An International Journal for Progress and Applications in Wind Power Conversion Technology*, 10, 551–577, <https://doi.org/10.1002/we.242>, 2007.
- Hodgson, E. L., Grinderslev, C., Forsting, A. R. M., Troldborg, N., Sørensen, N. N., Sørensen, J. N., and Andersen, S. J.: Validation of Aeroelastic Actuator Line for Wind Turbine Modelling in Complex Flows, *Frontiers in Energy Research*, 10, 864645, 675 <https://doi.org/10.3389/fenrg.2022.864645>, 2022.
- Hodgson, EL., Andersen, SJ., Troldborg, N., Forsting, A. M., Mikkelsen, RF., and Sørensen, JN.: A Quantitative Comparison of Aeroelastic Computations Using Flex5 and Actuator Methods in Les, *Journal of Physics: Conference Series*, 1934, 012014, <https://doi.org/10.1088/1742-6596/1934/1/012014>, 2021.
- Höning, L., Lukassen, L. J., Stoevesandt, B., and Herráez, I.: Influence of rotor blade flexibility on the near-wake behavior of the NREL 680 5 MW wind turbine, *Wind Energy Science*, 9, 203–218, <https://doi.org/10.5194/wes-9-203-2024>, 2024.

- Jha, P. K. and Schmitz, S.: Actuator Curve Embedding—an Advanced Actuator Line Model, *Journal of Fluid Mechanics*, 834, R2, <https://doi.org/10.1017/jfm.2017.793>, 2018.
- Jonkman, J.: The New Modularization Framework for the FAST Wind Turbine CAE Tool, in: 51st AIAA Aerospace Sciences Meeting Including the New Horizons Forum and Aerospace Exposition, p. 202, <https://doi.org/10.2514/6.2013-202>, 2013.
- 685 Jonkman, J. M., Hayman, G.J., Jonkman, B.J., Damiani, R.R., and Murray, R.E.: AeroDyn V15 User's Guide and Theory Manual, NREL Draft Report, p. 46, 2015.
- Kleine, V. G., Hanifi, A., and Henningson, D. S.: Non-Iterative Vortex-Based Smearing Correction for the Actuator Line Method, *Journal of Fluid Mechanics*, 961, A29, <https://doi.org/10.1017/jfm.2023.237>, 2023.
- Krüger, S., Steinfeld, G., Kraft, M., and Lukassen, L. J.: Validation of a Coupled Atmospheric–Aeroelastic Model System for Wind Turbine Power and Load Calculations, *Wind Energy Science*, 7, 323–344, <https://doi.org/10.5194/wes-7-323-2022>, 2022.
- 690 Li, A., Gaunaa, M., Pirrung, G. R., and Horcas, S. G.: A computationally efficient engineering aerodynamic model for non-planar wind turbine rotors, *Wind Energy Science*, 7, 75–104, <https://doi.org/10.5194/wes-7-75-2022>, 2022.
- Madsen, H. A., Riziotis, V., Zahle, F., Hansen, M. O. L., Snel, H., Grasso, F., Larsen, T. J., Politis, E., and Rasmussen, F.: Blade Element Momentum Modeling of Inflow with Shear in Comparison with Advanced Model Results, *Wind Energy*, 15, 63–81, <https://doi.org/10.1002/we.493>, 2012.
- 695 Mann, J.: Wind Field Simulation, *Probabilistic engineering mechanics*, 13, 269–282, [https://doi.org/10.1016/S0266-8920\(97\)00036-2](https://doi.org/10.1016/S0266-8920(97)00036-2), 1998.
- Manolas, D.I., Riziotis, V.A., and Voutsinas, S.G.: Assessing the Importance of Geometric Nonlinear Effects in the Prediction of Wind Turbine Blade Loads, *Journal of Computational and Nonlinear Dynamics*, 10, 041 008, <https://doi.org/10.1115/1.4027684>, 2015.
- Martínez-Tossas, L. A. and Meneveau, C.: Filtered Lifting Line Theory and Application to the Actuator Line Model, *Journal of Fluid Mechanics*, 863, 269–292, <https://doi.org/10.1017/jfm.2018.994>, 2019.
- 700 Meneveau, C. and Lund, T. S.: The Dynamic Smagorinsky Model and Scale-Dependent Coefficients in the Viscous Range of Turbulence, *Physics of fluids*, 9, 3932–3934, <https://doi.org/10.1063/1.869493>, 1997.
- Meng, H., Lien, F.-S., and Li, L.: Elastic Actuator Line Modelling for Wake-Induced Fatigue Analysis of Horizontal Axis Wind Turbine Blade, *Renewable energy*, 116, 423–437, <https://doi.org/10.1016/j.renene.2017.08.074>, 2018.
- 705 Meng, H., Li, L., and Zhang, J.: A Preliminary Numerical Study of the Wake Effects on the Fatigue Load for Wind Farm Based on Elastic Actuator Line Model, *Renewable Energy*, 162, 788–801, <https://doi.org/10.1016/j.renene.2020.07.140>, 2020.
- Meyer Forsting, A. R., Pirrung, G. R., and Ramos-García, N.: A Vortex-Based Tip/Smearing Correction for the Actuator Line, *Wind Energy Science*, 4, 369–383, <https://doi.org/10.5194/wes-4-369-2019>, 2019.
- Mikkelsen, R. F.: Actuator disk methods applied to wind turbines, Ph.D. thesis, Technical University of Denmark, PhD thesis at Technical University of Denmark, 2004.
- 710 Moens, M.: Large Eddy Simulation of wind farm flows: improved actuator disk model and investigation of wake phenomena, PhD thesis at Université Catholique de Louvain, 2018.
- Moens, M., Duponcheel, M., Winckelmans, G., and Chatelain, P.: An Actuator Disk Method with Tip-Loss Correction Based on Local Effective Upstream Velocities, *Wind Energy*, 21, 766–782, <https://doi.org/10.1002/we.2192>, 2018.
- 715 Moriarty, P. J. and Hansen, A. C.: AeroDyn Theory Manual, Tech. rep., National Renewable Energy Lab., Golden, CO (US), 2005.
- Panteli, A. N., Manolas, D. I., Riziotis, V. A., and Spiliopoulos, K. V.: Comparative Study of Two Geometrically Non-Linear Beam Approaches for the Coupled Wind Turbine System, *Journal of Wind Engineering and Industrial Aerodynamics*, 231, 105 231, <https://doi.org/10.1016/j.jweia.2022.105231>, 2022.

- Perez-Becker, S., Papi, F., Saverin, J., Marten, D., Bianchini, A., and Paschereit, C. O.: Is the Blade Element Momentum Theory Overestimating Wind Turbine Loads?—An Aeroelastic Comparison between OpenFAST’s AeroDyn and Qblade’s Lifting-Line Free Vortex Wake Method, *Wind Energy Science*, 5, 721–743, <https://doi.org/10.5194/wes-5-721-2020>, 2020.
- Santo, G., Peeters, M., Van Paeppegem, W., and Degroote, J.: Dynamic Load and Stress Analysis of a Large Horizontal Axis Wind Turbine Using Full Scale Fluid-Structure Interaction Simulation, *Renewable energy*, 140, 212–226, <https://doi.org/10.1016/j.renene.2019.03.053>, 2019.
- Sayed, M., Lutz, Th., Krämer, E., Shayegan, Sh., and Wüchner, R.: Aeroelastic Analysis of 10 MW Wind Turbine Using CFD–CSD Explicit FSI-coupling Approach, *Journal of Fluids and Structures*, 87, 354–377, <https://doi.org/10.1016/j.jfluidstructs.2019.03.023>, 2019.
- Shaler, K., Branlard, E., and Platt, A.: OLAF User’s Guide and Theory Manual, Tech. rep., National Renewable Energy Lab.(NREL), Golden, CO (United States), 2020.
- Shaler, K., Anderson, B., Martínez-Tossas, L. A., Branlard, E., and Johnson, N.: Comparison of Free Vortex Wake and Blade Element Momentum Results against Large-Eddy Simulation Results for Highly Flexible Turbines under Challenging Inflow Conditions, *Wind Energy Science*, 8, 383–399, <https://doi.org/10.5194/wes-8-383-2023>, 2023.
- Sieros, G., Chaviaropoulos, P., Sørensen, J. D., Bulder, B. H., and Jamieson, P.: Upscaling Wind Turbines: Theoretical and Practical Aspects and Their Impact on the Cost of Energy, *Wind energy*, 15, 3–17, <https://doi.org/10.1002/we.527>, 2012.
- Smagorinsky, J.: General Circulation Experiments with the Primitive Equations. I. The Basic Experiment, *Monthly Weather Review*, 91, 99–164, <https://doi.org/bhd6ks>, 1963.
- Sørensen, J. N. and Larsen, G. C.: A Minimalistic Prediction Model to Determine Energy Production and Costs of Offshore Wind Farms, *Energies*, 14, 448, <https://doi.org/10.3390/en14020448>, 2021.
- Sørensen, J. N. and Larsen, G. C.: Assessment of Energy Production and Costs Associated with a Massive Exploitation of Wind Power in the North Sea, in: *Journal of Physics: Conference Series*, vol. 2505, p. 012013, IOP Publishing, <https://doi.org/10.1088/1742-6596/2505/1/012013>, 2023.
- Sorensen, J. N. and Shen, W. Z.: Numerical Modeling of Wind Turbine Wakes, *Journal of Fluids Engineering*, 124, 393–399, <https://doi.org/10.1115/1.1471361>, 2002.
- Sørensen, J. N., Mikkelsen, R. F., Henningson, D. S., Ivanell, S., Sarmast, S., and Andersen, S. J.: Simulation of Wind Turbine Wakes Using the Actuator Line Technique, *Philosophical Transactions of the Royal Society A: Mathematical, Physical and Engineering Sciences*, 373, 20140071, <https://doi.org/10.1098/rsta.2014.0071>, 2015.
- Sprague, M. A., Ananthan, S., Vijayakumar, G., and Robinson, M.: ExaWind: A Multifidelity Modeling and Simulation Environment for Wind Energy, in: *Journal of Physics: Conference Series*, vol. 1452, p. 012071, IOP Publishing, <https://doi.org/10.1088/1742-6596/1452/1/012071>, 2020.
- Sprague, MA. and Geers, TL.: Legendre Spectral Finite Elements for Structural Dynamics Analysis, *Communications in numerical methods in engineering*, 24, 1953–1965, <https://doi.org/10.1002/cnm.1086>, 2008.
- Spyropoulos, N., Papadakis, G., Prospathopoulos, J. M., and Riziotis, V. A.: Investigating the Level of Fidelity of an Actuator Line Model in Predicting Loads and Deflections of Rotating Blades under Uniform Free-Stream Flow, *Applied Sciences*, 11, <https://doi.org/10.3390/app112412097>, 2021.
- Stanislawski, B. J., Thedin, R., Sharma, A., Branlard, E., Vijayakumar, G., and Sprague, M. A.: Effect of the Integral Length Scales of Turbulent Inflows on Wind Turbine Loads, *Renewable Energy*, 217, 119218, <https://doi.org/10.1016/j.renene.2023.119218>, 2023.

- Storey, RC., Norris, SE., Stol, KA., and Cater, JE.: Large Eddy Simulation of Dynamically Controlled Wind Turbines in an Offshore Environment, *Wind Energy*, 16, 845–864, <https://doi.org/10.1002/we.1525>, 2013.
- Thiry, O.: Investigation of wall shear stress models for large eddy simulation, PhD thesis at Université Catholique de Louvain, 2017.
- 760 Trigaux, F., Chatelain, P., and Winckelmans, G.: A Flexible Actuator Curve Model for Aeroelastic Simulations of Wind Turbines in Atmospheric Boundary Layers, in: *Journal of Physics: Conference Series*, vol. 2265, p. 022050, IOP Publishing, <https://doi.org/10.1088/1742-6596/2265/2/022050>, 2022.
- Troldborg, N.: Actuator line modelling of wind turbine wakes, PhD thesis at Technical University of Denmark, 2008.
- Vitsas, A. and Meyers, J.: Multiscale Aeroelastic Simulations of Large Wind Farms in the Atmospheric Boundary Layer, *Journal of Physics: Conference Series*, 753, 082 020, 2016.
- 765 Wang, Q., Sprague, M. A., Jonkman, J., Johnson, N., and Jonkman, B.: BeamDyn: A High-Fidelity Wind Turbine Blade Solver in the FAST Modular Framework, *Wind Energy*, 20, 1439–1462, <https://doi.org/10.1002/we.2101>, 2017.
- Welch, P.: The Use of Fast Fourier Transform for the Estimation of Power Spectra: A Method Based on Time Averaging over Short, Modified Periodograms, *IEEE Transactions on audio and electroacoustics*, 15, 70–73, <https://doi.org/10.1109/TAU.1967.1161901>, 1967.