



Investigating the interactions between wakes and floating wind turbines using FAST.Farm

Lucas Carmo¹, Jason Jonkman¹, and Regis Thedin¹

¹National Renewable Energy Laboratory, 15013 Denver West Parkway, Golden, CO 80401, USA

Correspondence: Lucas Carmo (lucas.carmo@nrel.gov)

Abstract. As floating offshore wind progresses to commercial maturity, wake and array effects across a farm of floating offshore wind turbines (FOWTs) will become increasingly important. While wakes of land-based and bottom-fixed offshore wind turbines have been extensively studied, only recently has this topic become relevant for floating turbines. This work presents an investigation on the mutual interaction between the motions of floating wind turbines and wakes using FAST.Farm.

5 While FAST.Farm has been extensively validated across a wide range of conditions, it has never been validated for FOWT applications. Hence, in the first part of this work, we validate FAST.Farm by comparing simulations of a single FOWT against high-fidelity results from large-eddy simulation available in the literature. The validation is based on wake meandering, mean wake deflection, and velocity deficit at different downstream locations. This validation showed that the original, axisymmetric (polar) wake model of FAST.Farm overpredicts the vertical wake deflection induced by shaft tilt and floater pitch, while the
10 new curled wake model is capable of properly capturing the vertical wake deflection. In the second part, we use FAST.Farm to analyze a small three-unit array of FOWTs across a wide range of environmental conditions. The same NREL 5-MW reference wind turbine atop the OC4-DeepCWind semisubmersible is adopted for the three FOWTs and for the validation against high-fidelity simulations. To assess the impact of compliance of the floating substructure, we compare the power production, tower-base moments, and blade-root moments obtained for the floating turbines with the results obtained in a
15 fixed-bottom configuration. In a nutshell, the main differences introduced by the compliance of the floating substructure are the motions induced by the waves, the change in the natural frequencies of the tower caused by differences in the boundary condition at its base, and the larger vertical wake deflection due to the mean pitch of the platform. The impact of these differences, as well as other minor effects, are analyzed in detail.

1 Introduction

20 Floating offshore wind turbines (FOWTs) are an interesting solution to harness the vast wind resources located in water depths that cannot be exploited by bottom-fixed turbines (GWEC, 2023). Currently, floating wind applications are transitioning from single turbine installations to arrays of a few turbines, as exemplified by the Hywind Scotland (5×6 MW turbines, installed in 2017) (Equinor, 2023) and the WindFloat Atlantic (3×8 MW turbines, installed in 2020) (Ocean Winds, 2023) projects, with larger scale floating farms expected in the near future (GWEC, 2023). As floating wind transitions to arrays with multiple units,



25 understanding the wakes and array effects of floating turbines becomes increasingly relevant for design, and the associated
needs of numerical modeling and design tools.

The wake is a region of reduced wind speed and increased turbulence intensity that forms downstream of the rotor as the
turbine extracts kinetic energy from the incoming wind. Wake effects have been extensively studied for land-based and bottom-
fixed offshore wind turbines, impacting power production and increasing structural loads for downwind units (Thomsen and
30 Sørensen, 1999; Kim et al., 2015; Shaler et al., 2022). However, due to the compliance of the floating substructure and the
coupling between motions and aerodynamic loads, the wake of a FOWT may behave differently from that of a fixed turbine.
Given that only recently has this topic become relevant, the mutual effects between FOWT motions and wakes are still not
fully understood.

Previous works have studied the impact of the motions of a single FOWT on power production, showing that the upwind-
35 downwind motion of the rotor from wave excitation can increase mean power production (Sant et al., 2015; Wen et al.,
2017, 2018; Huang and Wan, 2019; Johlas et al., 2021) and that the mean pitch of the floater caused by rotor thrust reduces
power production by increasing the relative angle between the rotor and the incoming wind (Johlas et al., 2021, 2022). The
latter is similar to the reduction observed for a yawed turbine (Fleming et al., 2015). While the power performance of a single
floating turbine compared to a fixed-bottom turbine is mostly given by the balance between those two opposing effects, the
40 performance of floating arrays also depends on how the wakes of floating turbines behave, which may differ compare to those
of fixed-bottom units.

Some studies have analyzed the wakes of FOWTs using high-fidelity simulations. Johlas et al. (2019) performed large-
eddy simulations (LES) – using coupled SOWFA-OpenFAST (Churchfield and Lee, 2015; Jonkman et al., 2023) simulations
implemented through an Actuator Line Method (ALM) – of a single NREL 5-MW reference wind turbine atop the OC3-
45 Hywind spar to compare the downstream wake characteristics against simulations of an equivalent fixed-bottom turbine. They
considered two different inflows and two different sea states, concluding that the compliance of the floating substructure affects
the wake by (i) a larger upward vertical wake deflection due to mean platform pitch, an effect that is similar to the horizontal
wake deflection cause by rotor yaw, and (ii) larger wake fluctuations and wake-induced turbulence. This increase of wake
fluctuations and wake-induced turbulence observed for the floating turbines, however, was small. In a subsequent work, Johlas
50 et al. (2020) expanded their analysis to assess the impact of floating platform types on the wake of a FOWT, analyzing the
same NREL 5-MW reference wind turbine atop the OC3-Hywind spar and atop the OC4-DeepCwind semisubmersible. They
showed that the OC3-Hywind spar presents a larger vertical wake deflection due to a larger mean pitch, and that the vertical
deflection is more important for the stable atmosphere boundary layer condition than for the neutral atmosphere condition
analyzed in their work. They also concluded that the rotor motions did not significantly affect the mid-to-far wake fluctuations,
55 which were more noticeable in the stable atmosphere condition due to low turbulence levels.

The low impact of rotor motions on the wake fluctuations reported by Johlas et al. (2019, 2020) agrees with wind tunnel ex-
periments (Schliffke et al., 2020) and field observations (Angelou et al., 2023). Other experiments and high-fidelity simulations
considering laminar or low-turbulence inflow indicate that the rotor motions do influence wake dynamics and recovery (Rockel



et al., 2017; Fu et al., 2019; Li et al., 2022; Messmer et al., 2023), but these effects seem to be negligible for moderate to high
60 atmospheric turbulence levels.

While experiments and high-fidelity simulations are important to understand the physical mechanisms that differentiate the wakes of FOWTs from bottom-fixed turbines, their high economic and/or and computational cost restrict analyses to only a limited number of different test cases. On the other hand, engineering-fidelity tools like FAST.Farm (Jonkman et al., 2017; Jonkman and Shaler, 2021) present a good balance between fidelity and computational cost, thus allowing for analyzes of hun-
65 dreds of test cases within a reasonable time frame and cost. FAST.Farm is an open-source, midfidelity, multiphysics, nonlinear, time-domain engineering tool developed by NREL for predicting the power performance and structural loads of wind turbines, including FOWT, within a wind farm. FAST.Farm uses OpenFAST to solve the aero-hydro-servo-elastic dynamics of each individual (floating offshore) wind turbine but considers additional physics for farm-wide ambient inflow, farm-level control, wake evolution and convection including meandering, and wake merging. The software is based on some of the principles
70 of the dynamic wake meandering (DWM) model (Larsen et al., 2008), including passive tracer modelling of meandering, but addresses many of the limitations of previous DWM implementations.

FAST.Farm has been validated and successfully applied to bottom-fixed turbines. Jonkman et al. (2018) validated FAST.Farm against SOWFA simulations for various cases, showing accurate predictions of thrust and power in both single-turbine and small wind-farm scenarios; of wake meandering across different atmospheric conditions; and of averaged wake-deficit advec-
75 tion, evolution, and merging effects. Kretschmer et al. (2021) validated FAST.Farm in single wake conditions using data from the alpha ventus offshore wind farm, presenting good predictions for power and structural loads. They also demonstrated the importance of a wake-added turbulence model to improve the accuracy of fatigue load prediction, particularly for low-ambient turbulence conditions and for tower-base loading. Shaler et al. (2022) employed FAST.Farm to investigate the impact of wake steering on wind farm loads. They concluded that while wake steering does not significantly affect ultimate loads—because
80 wake steering is typically applied at below rated wind speeds—it does increase fatigue of loads such as blade-root and shaft bending. Nevertheless, this fatigue increase leads to more uniform damage distribution across the array, which might be beneficial for planning maintenance over the long term. Thedin et al. (2024) also used FAST.Farm to investigate wake steering, focusing on the trade-off between power production and fatigue loading for a small wind farm. They concluded that configurations with positive yaw of the nacelle are preferred, even for negative wind inflows due to significantly lower fatigue loads
85 compared to negative yaw angles.

For floating wind applications, Wise and Bachynski (2020) used FAST.Farm to simulate a two-turbine array with different floater concepts (a semisubmersible, a spar, and a tension leg platform) and investigate wake meandering, motions of the floating substructure, and fatigue loads of the tower and blades. They showed that wake meandering has a secondary effect on surge and pitch motions of the floater, but a significant influence on the tower top yaw moment and, consequently, yaw
90 motions. The results also showed that mooring loads were sensitive to wake deficit but not meandering. The different floater concepts presented distinct behaviour concerning tower bases fore-aft bending moment, which was attributed to the distinct tower natural frequencies of each concept. Rivera-Arreba et al. (2023a) employed FAST.Farm to study the impact of vertical wake deflection on the power performance of a waked floating turbine, while Rivera-Arreba et al. (2023c) performed a similar



investigation on the effect of atmospheric stability. Both works demonstrated the importance of vertical wake deflection for
95 the power production and structural response of waked turbines. Rivera-Arreba et al. (2023b) compared the results obtained
with FAST.Farm against LES results of the IEA 15-MW reference turbine (Gaertner et al., 2020) under different misalignment
angles in yaw and tilt. All these works that applied FAST.Farm to FOWTs considered the polar wake formulation, with Rivera-
Arreba et al. (2023b) reporting difficulties to match the vertical and horizontal wake deflection concurrently by calibrating
model inputs—in particular, the size of the polar grid used to calculate the spatial-averaged velocity adopted to propagate the
100 wake.

This work aims to investigate the mutual interaction between the motions of floating wind turbines and wakes. To do so,
we use FAST.Farm to analyze a small three-unit FOWT array across a wide range of environmental conditions, including vari-
ations in mean hub-height wind speed (below, at, and above rated), shear profile (low to high shear), turbulence intensity (low
to high turbulence levels), and sea-state severity (mild, medium, and severe). Due to the large number of simulations required
105 (648 different simulations), FAST.Farm is well suited for this kind of study because it presents a good balance between fidelity
and computational cost. The same NREL 5-MW reference wind turbine (Jonkman et al., 2009) atop the OC4-DeepCWind
semisubmersible (Robertson et al., 2014) is adopted for the three FOWTs. To assess the impact of compliance of the float-
ing substructure, we compare the power production, tower-base moments, and blade-root moments obtained for the floating
turbines with the results obtained from an equivalent fixed-bottom configuration.

110 Even though FAST.Farm has been validated in several projects across a wide range of conditions, it has never been validated
for FOWT applications. Hence, before analyzing the floating array, we first compare FAST.Farm simulations of a single FOWT
– also employing the NREL 5-MW reference wind turbine atop the OC4-DeepCwind semisubmersible – against high-fidelity
results from LES reported by Johlas et al. (2020). The validation is based on wake meandering, mean wake deflection, and
velocity deficit at different downstream locations. In particular, we demonstrate that the issue with the vertical wake deflection
115 reported by Rivera-Arreba et al. (2023b) can be solved by adopting the curled wake model that was recently implemented in
FAST.Farm (Branlard et al., 2023) instead of the original polar wake model.

2 Methodology

This section describes the FOWT, wind farm, and the FAST.Farm model considered in this work, as well as the methodology
adopted to post-process the simulation results. Throughout this work, we adopt a coordinate system with origin at the inter-
120 section between the mean water level and the undisplaced tower axis, with the x axis aligned with the nominal wind and wave
directions, the z axis directed upwards, and the y axis following from the right-hand rule.

2.1 Floating offshore wind turbine and farm

The OC4-DeepCwind semisubmersible (Robertson et al., 2014) consists of a 6.5-m diameter central column connected to three
12-m diameter external columns arranged as an equilateral triangle, with a draft of 20 m. A 24-m diameter and 6-m high column
125 is attached to the base of each external column to help suppress motions, similar to heave plates. The NREL 5-MW reference



turbine (Jonkman et al., 2009) is located atop the tower, which is positioned atop the central column. The main properties of the semisubmersible and of the turbine are summarized in Tables 1 and 2, respectively. For the three-unit array, the turbines are aligned along the global x axis with a spacing of $7D$ (882 m), where D is the rotor diameter.

The platform is moored using three catenary lines. The fairleads are located at the top of the base columns, at a depth of 130 14 m and at a radius of 40.9 m from the platform centerline. The anchors are located at a water depth of 200 m and at a radius of 837.6 m from the platform centerline. The natural periods and frequencies of the moored FOWT are presented in Table 3. Note that the frequency of the 1st tower fore-aft bending mode reported in Table 3, 0.426 Hz, corresponds to the tower atop the OC4-DeepCwind platform. This frequency is higher than the value of 0.324 Hz obtained for a tower cantilevered to the ground as reported by Jonkman et al. (2009) due to the floating boundary condition. Also, the natural frequencies of surge, heave, 135 pitch, and yaw were obtained from decay tests around the undisplaced body position in the absence of wind; the values for the FOWT with mean aerodynamic thrust loads may be slightly different due to changes in the mooring system for different offsets.

An illustration of the floating turbine is given in Fig. 1. For simplicity, all the simulations analyzed in this work consider the turbines to be aligned with the mean wind direction (i.e., no mean yaw error, other than small dynamic yaw errors resulting 140 from floater yaw motion).

Table 1. Main properties of the OC4-DeepCwind semisubmersible.

Displacement	13917 m ³
Diam. of central column	6.5 m
Diam. of outer columns	12 m
Diam. of base columns	24 m
Height of base columns	6 m
Draft	20 m

Table 2. Main properties of the NREL 5-MW reference turbine.

Rated power	5 MW
Rotor, hub diameter	126 m, 3 m
Hub height	90 m
Cut-in, rated, cut-out wind speed	3 m s ⁻¹ , 11.4 m s ⁻¹ , 25 m s ⁻¹
Cut-in, rated rotor speed	6.9 rpm, 12.1 rpm

2.2 Environmental conditions

Due to the two different objectives of this work, we consider two different sets of environmental conditions: one for the validation against high-fidelity simulations, and another for the analysis of the three-turbine array.



Table 3. Natural periods and frequencies of the moored FOWT.

	Period (s)	Frequency (Hz)
Surge	109	0.009
Heave	17.2	0.058
Pitch	25.6	0.039
Yaw	79.4	0.013
1 st Tower FA mode	2.32	0.426

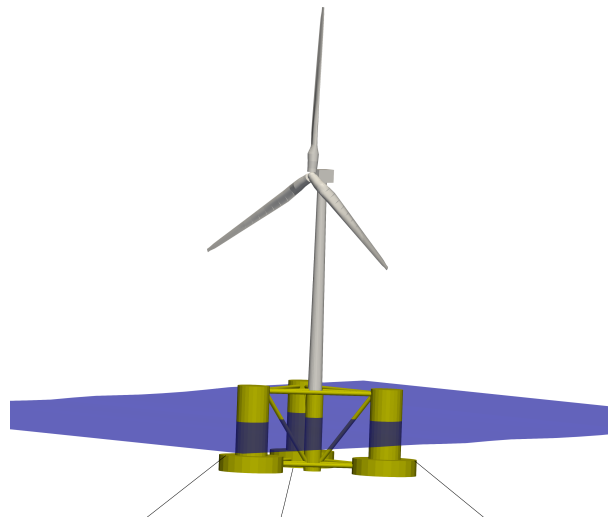


Figure 1. Illustration of the NREL 5-MW reference turbine atop the OC4-DeepCwind semisubmersible.

2.2.1 For the validation against high-fidelity simulations

145 The validation against high-fidelity results from LES simulations is based on one of the environmental conditions analyzed by
Johlas et al. (2020). They generated the inflow using a precursor Atmospheric Boundary Layer (ABL) simulation in SOWFA
considering a mean wind speed of 8 m s^{-1} at hub height, a surface roughness height z_0 chosen based on the Charnock model
with $\alpha = 0.011$, and neutral atmosphere with a capping inversion height of $z = 750 \text{ m}$. Since we did not have access to the
original LES results or the original inflow, we have tried to reproduce the reported wind profile as well as possible—in partic-
150 ular aiming to match the shear profile and mean wind speed standard deviation across the rotor—using the synthetic turbulent
wind field generator TurbSim (Jonkman, 2009) with a Kaimal spectrum and the normal turbulence model from the IEC stan-
dards (IEC, 2005). To reduce the uncertainties associated to the stochastic nature of the wind inflow, all results consider the
average of six different realizations with distinct seeds for the turbulent wind field. As illustrated in Fig. 2, though the wind
profile generated with TurbSim is not the same as the one considered by Johlas et al. (2020), it is deemed similar enough for



155 our purposes. One significant difference between the TurbSim and the LES inflows is that the LES simulations account for
wind veer due to the atmospheric Coriolis effect, an effect that is not modeled in FAST.Farm and which does influence the
comparisons presented ahead.

We consider the same wave condition as Johlas et al. (2020), namely a long-crested irregular sea characterized by a JON-
SWAP spectrum with significant wave height of $H_s = 8.0$ m, peak period of $T_p = 14.0$ s, and wave-propagation direction of
160 30° relative to the wind. For simplicity, we consider only one realization of this sea state (i.e., only one seed).

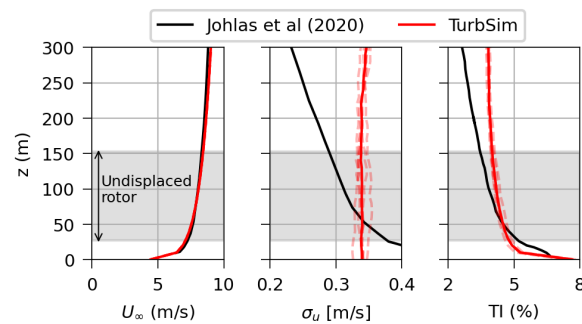


Figure 2. Comparison between the mean wind speed and turbulence intensity profiles considered by Johlas et al. (2020) and the ones obtained with TurbSim. The TurbSim results correspond to the average of six seeds, with the result from each seed visible as transparent dashed lines.

2.2.2 For the three-turbine array

We analyze the three-turbine array under a wide range of environmental conditions, including variations in mean hub-height
wind speed, shear profile, turbulence intensity, and sea state severity. We generated the wind inflows using TurbSim with a
Kaimal spectrum, the normal turbulence model from the IEC standards, and a power law shear profile. For the incoming wave
165 field, we employ linear wave theory and irregular waves characterized by a JONSWAP spectrum. For simplicity, both the wind
and incoming waves are aligned with the x -axis of the global coordinate system. We consider all the combinations of:

1. Three different mean wind speeds at hub height: below, at, and above rated;
2. Three different turbulence intensity levels (TI): low, medium, and high TI;
3. Three different shear profiles, characterized by the exponent of the power law profile: low, medium, and high shear;
- 170 4. Three different wave conditions: mild, medium, and severe sea states.

The numerical values adopted for the different environmental parameters are given in Table 4. Besides the floating conditions,
we also analyze FAST.Farm simulations of the floater in a fixed configuration for the same set of wind conditions. The fixed
configuration is obtained by disabling the degrees of freedom associated with floater motion and the hydrodynamic loading,
hence the turbines behave as if they were onshore and the response is insensitive to the wave condition. We consider six
175 different seeds for the wind inflow but only one for each sea state, leading to a total of 648 different simulations.



Table 4. Environmental conditions considered for the three-turbine array.

Parameter	Label	Value
Mean wind speed	Below rated	8 m s^{-1}
	Rated	11.4 m s^{-1}
	Above rated	18 m s^{-1}
Turbulence intensity	Low	5%
	Medium	10%
	High	20%
Exponent of shear profile	Low	0.02
	Medium	0.20
	High	0.40
Sea state	Mild	$T_p = 8.0 \text{ s}, H_s = 1.0 \text{ m}$
	Medium	$T_p = 10.0 \text{ s}, H_s = 4.0 \text{ m}$
	Severe	$T_p = 14.0 \text{ s}, H_s = 8.0 \text{ m}$

2.3 Numerical model in FAST.Farm

FAST.Farm employs different domains (in both time and space) for the wind field. The first is a low-resolution domain that encompasses the whole wind farm and which is primarily responsible for wake meandering and merging. For accurate load calculation by OpenFAST, FAST.Farm also employs high-resolution wind domains around each wind turbine that need to encompass any turbine displacement. We adopt a low-resolution domain with dimensions $X_{\text{low}} \times Y_{\text{low}} \times Z_{\text{low}} = 3384 \text{ m} \times 760 \text{ m} \times 360 \text{ m}$, with a spatial resolution $\Delta Y_{\text{low}} = \Delta Z_{\text{low}} = 10 \text{ m}$, and a temporal resolution $\Delta t_{\text{low}} = 3.0 \text{ s}$. To avoid double interpolating the wind data in the X-direction, ΔX_{low} is different for each wind speed (Jonkman and Shaler, 2021): $\Delta X_{\text{low}}^{\text{below}} = 24 \text{ m}$, $\Delta X_{\text{low}}^{\text{rated}} = 30 \text{ m}$, and $\Delta X_{\text{low}}^{\text{above}} = 50 \text{ m}$. This spatial-temporal discretization is a bit coarser than current modeling guidance (Jonkman and Shaler, 2021), which evolved over the course of this project; however, a subset of cases were run with finer discretization that follows current modeling and the results were generally found to be consistent with the present results, but with the potential that the present results show a small underprediction of fatigue loads at low ambient turbulence levels.

Each high-resolution domain has dimensions $X_{\text{high}} \times Y_{\text{high}} \times Z_{\text{high}} = 152 \text{ m} \times 160 \text{ m} \times 160 \text{ m}$ originating 78-m upwind of each turbine, with a spatial resolution $\Delta X_{\text{high}} = 4 \text{ m}$ and $\Delta Y_{\text{high}} = \Delta Z_{\text{high}} = 5 \text{ m}$, and a temporal discretization $\Delta t_{\text{high}} = 0.3 \text{ s}$. Figure 3 illustrates the low- and high-resolution domains. Because for the validation against high-fidelity simulations we only have one turbine, we use a shorter low-resolution domain along the wind direction, $X_{\text{low}} = 1608 \text{ m}$, to reduce the computational cost; all other discretization parameters are the same. We performed all numerical simulations using FAST.Farm v3.4.1.

We also use the validation against high-fidelity simulations to calibrate the numerical model before analyzing the three-unit array. As discussed in Sect. 3, a particularly relevant aspect for the floating turbine case is the choice of wake formulation. The

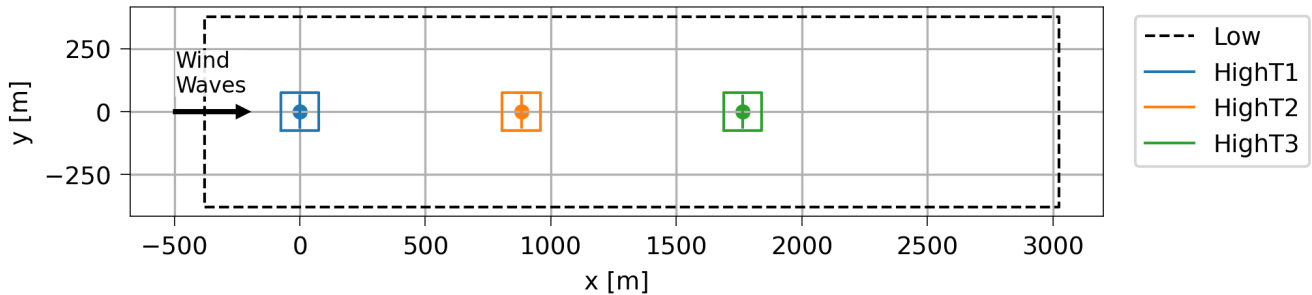


Figure 3. Illustration of the three-unit wind farm, showing the low- and high-resolution domains adopted in FAST.Farm, with the turbines marked with dots and vertical lines.

comparisons show that the original polar (axisymmetric) wake model adopted by FAST.Farm overpredicts the vertical wake deflection (due to shaft tilt and floater pitch), while the new curled wake model (Branlard et al., 2023) captures this vertical wake deflection well. We adopt a radial increment for the finite-difference grid used to solve the wake deficits of 13 m for the simulations with the curled wake model and 5 m for the ones with the polar wake model. This value follows previous modeling guidance, which suggested to use a radial increment $dr \lesssim D^{\text{rotor}}/10$ for the curled wake model, and is a bit coarser than the current recommendation of $dr \lesssim D^{\text{rotor}}/15$. Similar to the coarser spatial-temporal discretization for the low-resolution grid, this coarser dr did not lead to any problems in our simulations.

The setup of the aero-hydro-servo-elastic part of the FAST.Farm simulation is very similar to the analysis of a single wind turbine with OpenFAST, and all the inputs required to simulate the NREL 5-MW reference wind turbine atop the OC4-DeepCWind semisubmersible are publicly available in the OpenFAST repository on GitHub (Jonkman et al., 2023). Wave forces and moments on the floating substructure are computed with HydroDyn – the hydrodynamics module of OpenFAST – using a hybrid approach that combines first- and second-order potential-flow coefficients precomputed in the frequency-domain with WAMIT (WAMIT, 2020) and the quadratic drag from Morison’s equation. Aerodynamic loads on the blades are obtained with blade element momentum theory with various corrections such as dynamic inflow and unsteady airfoil aerodynamics using AeroDyn (Jonkman et al., 2015). The mooring system is modeled with MoorDyn (Hall, 2015), which uses a lumped mass model. Turbine control is included with ServoDyn using the conventional baseline generator-torque controller and a full-span rotor-collective blade-pitch controller. Structural dynamics is solved using ElastoDyn considering the first and second flapwise blade modes, the first edgewise blade mode, rigid-body rotor rotation plus shaft torsion, the first and second fore-aft and side-to-side tower bending modes, and, for the floating case, the six dofs corresponding to the rigid body motions of the platform. For the fixed configuration, the degrees of freedom corresponding to floater motion are deactivated.

Each of the simulations was performed for a total of 4000 s, from which the first 400 s were discarded to remove transients related to simulation startup.

Air-sea interaction is not considered either in FAST.Farm or the LES results that FAST.Farm is validated against. Moreover, though wake added turbulence was recently implemented in FAST.Farm, it was not fully integrated to the software at the



time that we performed the simulations. Hence, this effect is not considered in this work, which is an important limitation for the low turbulence cases (Kretschmer et al., 2021). Inclusion of wake-added turbulence and the use of finer spatial-temporal discretizations is important future work.

2.4 Post-processing of simulation results

The quantities of interest analyzed in this work are the motions of the floating substructure, bending moments at the blade root and tower base, and generator power. Additionally, wake deflection and meandering are important for validation against the high-fidelity simulations and to help explain the results obtained for the other quantities of interest. Due to the large number of simulations, we concentrate the analysis on the mean and standard deviation for most of the quantities of interest. We also present power spectral densities (PSDs) of some cases of interest to illustrate the physical effects involved.

In place of standard deviation for the bending moment quantities, we present short-term damage-equivalent loads (DELs) calculated using a modified version of pCrunch (Nunemaker and Abbas, 2023). A DEL is a constant-amplitude fatigue-load that produces equivalent damage as the original load time series. The short-term DEL for a given time series j about a fixed mean load, DEL_j^{STF} , is computed as:

$$DEL_j^{STF} = \left[\frac{\sum_i n_{ji} (L_{ji}^{RF})^m}{n_j^{STeq}} \right]^{\frac{1}{m}}, \quad (1)$$

$$n_j^{STeq} = f^{eq} T_j, \quad (2)$$

where n_{ji} is the number of cycles in the i -th bin of the rainflow histogram, L_{ji}^{RF} is the cycle's load range about a fixed load-mean value using Goodman correction, n_j^{STeq} is the total equivalent fatigue counts for time-series j , f^{eq} is the DEL frequency, T_j is the elapsed time, and m is the Wöhler exponent. We adopt $f^{eq} = 1$ Hz, $m = 4$ for the steel tower, and $m = 10$ for the composite blades.

To account for load directionality, we compute the DELs by first computing the moment along several directions θ within the blade root and tower base cross sections, $M(t, \theta)$, as:

$$M(t, \theta) = M_x(t) \cos \theta + M_y(t) \sin \theta, \quad (3)$$

where M_x and M_y are the moments along two orthogonal directions, for instance the fore-aft and side-to-side tower base moment. We then compute the DEL for each direction θ and take the maximum value across all directions as the final DEL for that given time series. We consider directions ranging from 0° to 180° with a 10° discretization – the values between 180° and 360° are equivalent to their symmetrical counterparts.

We use Goodman's correction to take into account the mean loads in the DEL calculation. For the tower, which is made of a single isotropic material, the ultimate load required by Goodman's correction follows directly from the ultimate stress and the geometry of the cross-section at the tower base:

$$L_{ult} = \frac{\sigma_{ult} I}{R}, \quad (4)$$



where $I = 2.925 \text{ m}^4$ is the cross-sectional area moment of inertia (the same for all θ) and $R = 3.0 \text{ m}$ is the radius of the tower base (Jonkman et al., 2009). The stress is not as readily computed for the composite blades, so we assume a circular cross-section with a thickness of 10% of the radius for simplicity and for lack of better information. Given the root radius of the blades of 1.771 m, the resulting area moment of inertia is $I = 2.657 \text{ m}^4$. Because neither the ultimate stress of the tower nor the ultimate stress of the blades are available in the documentation of the NREL 5-MW reference turbine, we adopt $\sigma_{\text{ult}}^{\text{steel}} = 300 \text{ MPa}$ and $\sigma_{\text{ult}}^{\text{blade}} = 1000 \text{ MPa}$, which are within the expected range for the steel tower and the composite blade.

We analyze the wakes based on their wake center. Though FAST.Farm outputs the instantaneous center of the wake at a given downstream position, this value is not necessarily correct when adopting the curled wake model due to its asymmetric shape. Hence, we compute the instantaneous wake center using the SAMWICH toolbox (Quon, 2017) with the constant area method (Quon et al., 2020) to post-process the visualization files output by FAST.Farm. The left panel of Figure 4 provides an example of an instantaneous wake outline and corresponding wake center computed with SAMWICH from a velocity snapshot output by FAST.Farm. From the time series of wake position, we use the mean value to characterize wake deflection and the standard deviation to characterize wake meandering.

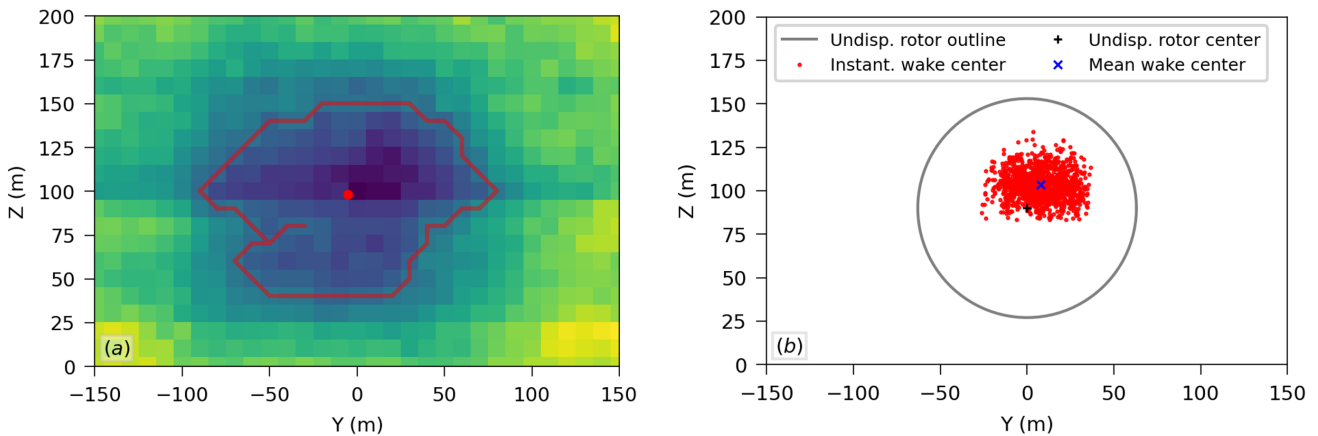


Figure 4. (a) Example of an instantaneous wake outline and corresponding wake center computed with SAMWICH from a velocity snapshot output by FAST.Farm, and (b) all the instantaneous wake center locations obtained for this given case and the corresponding mean wake position. These results correspond to a vertical plane located $6D$ downwind of the undisplaced rotor center of the floating turbine case considered in the validation against LES.

3 Validation and calibration against high-fidelity simulations

This section presents the validation and calibration of FAST.Farm against high-fidelity results from LES simulations reported by Johlas et al. (2020). The comparisons are based on the mean and standard deviation (meandering) of the wake center position, as well as on the mean velocity deficit at different downstream locations.



265 Before moving to the analysis of wake quantities, Fig. 5 shows the good agreement between the motions of the floating substructure obtained with FAST.Farm and the ones reported by Johlas et al. (2020). Though not identical, they are close enough so that differences in the wake results cannot be attributed to differences in platform motions.

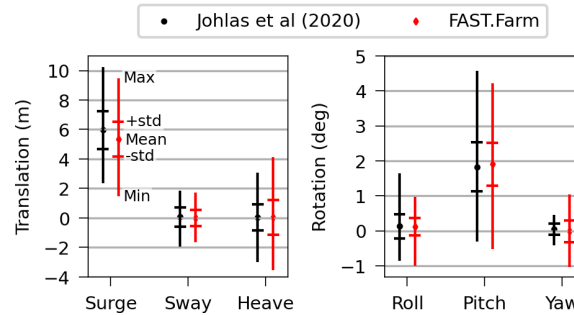


Figure 5. Comparison of the motions of the floating substructure obtained in this work and the ones reported by Johlas et al. (2020).

3.1 Cutoff frequency

The first parameter that required tuning is the cut-off frequency, f_c , of the low-pass filter that FAST.Farm uses for computing wake advection, deflection and meandering to ensure high frequencies do not enter the quasi-steady wake deficit calculation. Branlard et al. (2023) recommend a cut-off frequency given by:

$$f_c = \frac{2.4}{\tau_1}, \quad \tau_1 = \frac{1.1}{1 - 1.3 \min(a_{\text{avg}}, 0.5)} \frac{R}{U}, \quad (5)$$

where τ_1 is the time scale used in the Øye dynamic inflow model, a_{avg} is the average axial induction factor across the rotor disk, R is the rotor radius, and U is the mean wind speed at hub height. For the present case, the recommended value results in 0.083 Hz.

This value works well for the FAST.Farm simulations of the fixed turbine, but leads to nonphysical results for the simulations of the floating turbine. As illustrated in Fig 6, the wind field obtained with FAST.Farm downstream of the floating turbine presents nonphysical streaks that are due to a limitation of the present method adopted by FAST.Farm to compute wake evolution. In FAST.Farm, the wake-deficit evolution is solved within wake volumes that are delimited by wake planes. Those wake planes are generated at the rotor at each time step and convect downstream in subsequent steps. The problem is that the motions of the floating substructure changes the position where those planes are generated and also their propagation velocity, in such a way that they can pass each other. In reality, this would result in pulsation of the wake. But this situation is not well handled by FAST.Farm, leading to the nonphysical behavior of streaks in the wake, resulting from overlapping wakes, shown in Fig 6. Such overlapping wakes would lead to unphysical step changes in the aerodynamic loading of downstream turbines, resulting in inaccurate DELs.

Addressing this issue is planned for the future but requires significant changes in the formulation adopted in FAST.Farm. For now, a workaround to avoid this nonphysical behavior is to reduce f_c to a value close to the resonance frequency of surge

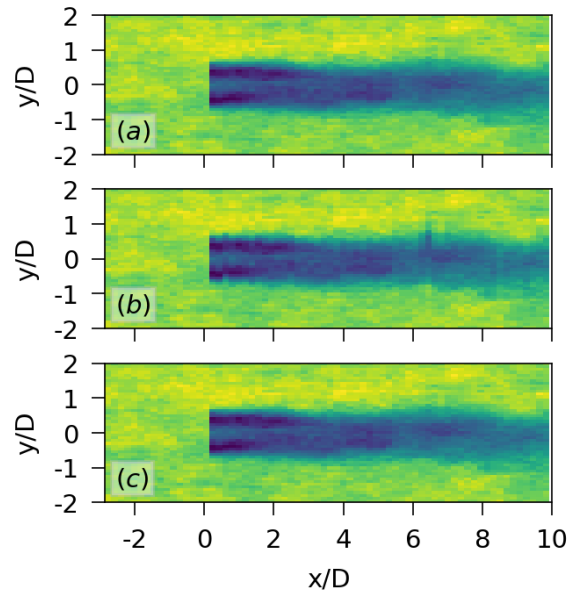


Figure 6. Top view of the wake obtained with FAST.Farm for (a) the fixed turbine with the recommended value of $f_c = 0.083$ Hz for this case, (b) the floating turbine with the recommended value of $f_c = 0.083$ Hz, and (c) the floating turbine with $f_c = 0.010$ Hz, a value close to the resonance frequency of surge.

of the floating substructure. For the present study, we adopt $f_c = 0.010$ Hz. As shown in Fig. 6, this value is enough to remove the nonphysical streaks from the wake.

290 However, by lowering the value of f_c , we filter out the dynamic influence of floater motions on the wake, thus reducing the amplitude of pulsations in the wake resulting from surge and pitch of the floating substructure. This effect is expected to be more relevant in very low turbulence inflow conditions, similar to what is observed for wake-added turbulence, and we consider this limitation to be acceptable for the present work and in need of reassessment in future work.

3.2 Wake formulation

295 FAST.Farm can solve for the wake dynamics within a wind farm using either a polar wake formulation (Jonkman et al., 2017), which assumes an axisymmetric wake, or the recently implemented curled wake formulation (Branlard et al., 2023), which allows for an asymmetric wake as a result of skewed flow from rotor yaw and/or tilt.

The mean wake trajectory (deflection) and wake motion standard deviation (meandering) from both wake models is illustrated in Fig. 7. Neither wake model captures the horizontal wake deflection from the LES results. This horizontal wake
300 deflection seen in the LES solution results from atmospheric Coriolis effect that is not in FAST.Farm. This is reflected in the wind veer reported by (Johlas et al., 2020) that is not present in our FAST.Farm simulations, as noted in Sect. 2.2.1.

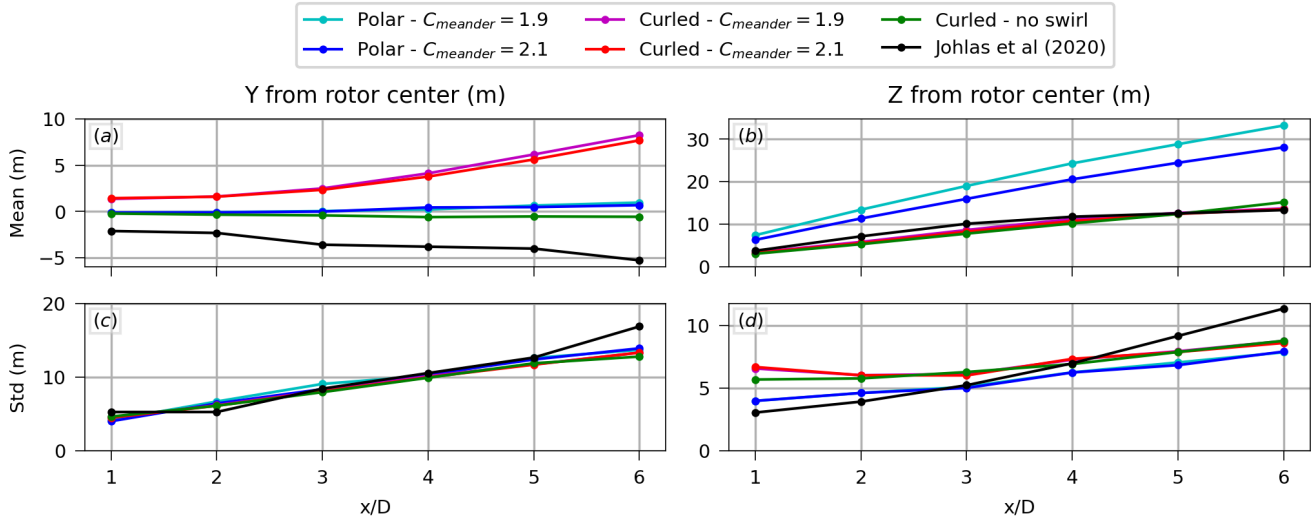


Figure 7. (a) Mean horizontal wake deflection, (b) mean vertical wake deflection, (c) horizontal wake meandering (expressed in terms of standard deviation of the wake center), and (d) vertical wake meandering as a function of downstream distance obtained with FAST.Farm considering different wake models compared with LES results from Johlas et al. (2020).

Neglecting this difference for now, the polar wake model yields good results for wake standard deviation (meandering) in both the vertical and horizontal directions. However, the polar wake model is unable to match the vertical wake deflection (resulting from shaft tilt and floater pitch) from the LES simulations, even when calibrating a key input of the polar wake model within a range of reasonable values. The parameter that most impacts the vertical wake deflection computed with the polar wake model is $C_{meander}$, which determines the size of the polar grid that is used to calculate the spatial average of the velocity in the passive tracer model that is used to propagate the wake. By increasing $C_{meander}$, the size of the polar grid is increased, thus reducing the influence of the wake deficit on the spatial average and, consequently, reducing the vertical wake deflection. Figure 7 shows that we can reduce the overestimation of the vertical wake deflection obtained with the polar wake model by increasing $C_{meander}$, but we would need to consider an unrealistically large value of $C_{meander}$ to match the vertical wake deflection from the LES simulations, at the expense of reducing the wake meandering and deviating considerably from the default value of 1.9 (previously calibrated in Doubrava et al. (2018) to ensure that the wake meandering from FAST.Farm matches LES in the absence of significant skew).

The curled wake model, on the other hand, can reproduce the vertical wake deflection from the LES simulations very well, with a nearly perfect match at 6 diameters downstream of the rotor. Wake meandering is also well captured by the curled wake model. Though the vertical wake meandering for $x < 4D$ is better modeled by the polar wake model, this is not very relevant because we are not interested in the near wake region for wind farms analyses. Considering the horizontal wake deflection again: while in the LES results the horizontal wake deflection is mainly due to an atmospheric Coriolis effect that is not in FAST.Farm, the curled wake formulation captures the opposite deflection that results from swirl of the curled wake induced



320 by rotor torque. (This is demonstrated in Fig. 7 through the curled wake results shown without swirl.) This deflection resulting
 from swirl is also captured in LES, but the Coriolis effect is opposite in magnitude and stronger. It is noted, though, the strength
 and direction of the Coriolis effect will depend on the latitude of a given wind farm.

As shown in Fig. 8, the main difference between the fixed and floating cases is the larger vertical wake deflection induced
 by the mean pitch (tilt) of the floating substructure. Because our objective is to assess the differences between a floating wind
 325 array compared to a fixed one, we accept the small differences in the horizontal wake deflection given the good agreement
 between the curled wake model and the LES results for the vertical wake deflection.

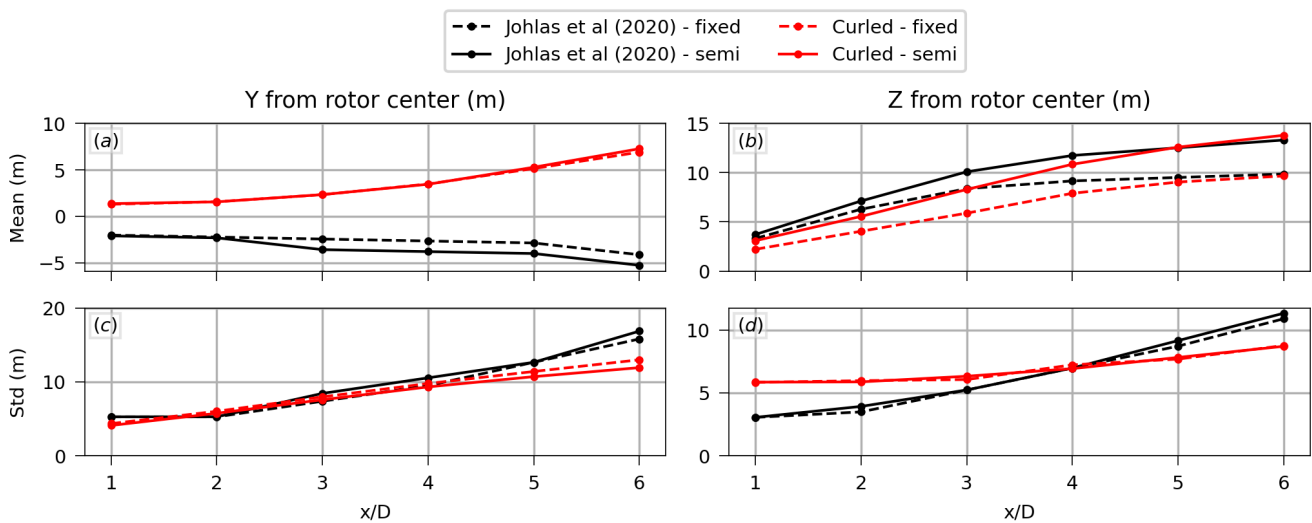


Figure 8. (a) Mean horizontal wake deflection, (b) mean vertical wake deflection, (c) horizontal wake meandering (expressed in terms of standard deviation of the wake center), and (d) vertical wake meandering as a function of downstream distance obtained with FAST.Farm (adopting the curled wake model) compared with LES results from Johlas et al. (2020) for the floating and fixed cases.

3.3 Summary of calibrated model

Based on the results presented in this section, we adopt the curled wake model with $f_c = 0.010\text{Hz}$ and $C_{meander} = 2.1$ for the simulations of the three-turbine array. In the end, FAST.Farm has a reduction in the amplitude of pulsations in the wake induced
 330 by floater motions (related to the choice of f_c) and a difference in the mean horizontal wake deflection (due to the lack of an atmospheric Coriolis effect in FAST.Farm) compared to the LES simulations. Despite these limitations of FAST.Farm, this validation provides confidence to proceed with the primary objective of investigating the interactions between the motions of floating wind turbines and wakes using FAST.Farm. The good agreement with the LES results is illustrated by the temporal mean wake deficits at different downstream distances shown in Fig. 9.

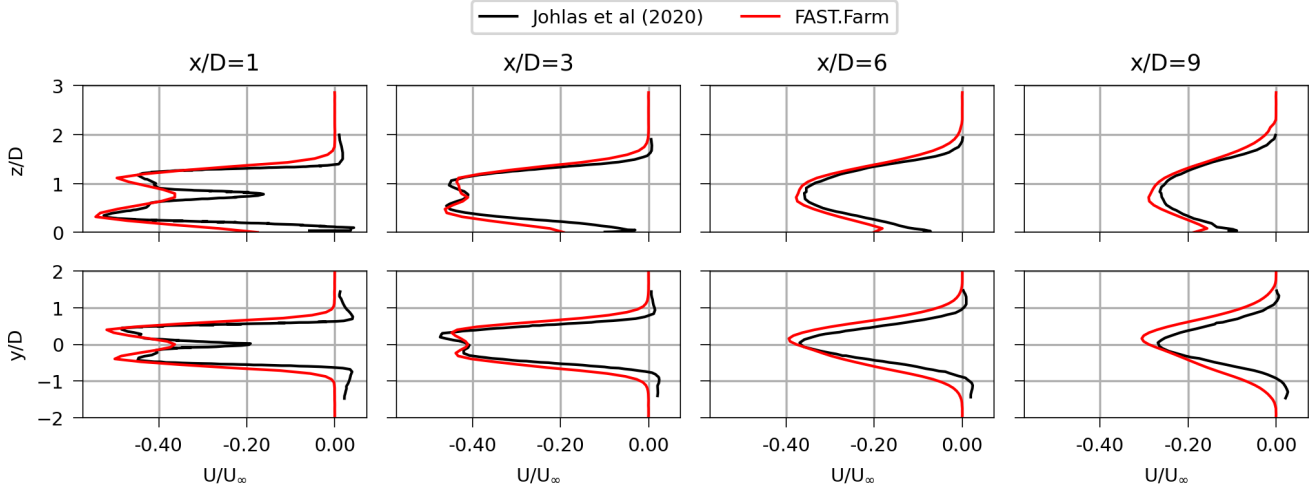


Figure 9. Vertical (top) and horizontal (bottom) temporal mean wake deficits at different downstream distances obtained from FAST.Farm (adopting the curled wake model) compared with LES results from Johlas et al. (2020).

335 4 Results

This section presents the results of the three-unit array simulations with FAST.Farm to assess the differences between a floating wind array compared to a fixed one across a comprehensive range of environmental conditions. In a nutshell, the main differences introduced by the compliance of the floating substructure are the motions induced by the wind and waves, the change in the natural frequencies of the tower, and the larger vertical wake deflection due to the mean pitch of the platform discussed in the previous section. In the following, we investigate how these differences affect the power production and the structural loads on the tower and blades.

4.1 Generator power

One of the main motivations for studying the wakes of wind turbines is the impact on power production of downstream units. As shown in Fig. 10(a) – which presents the mean generator power along the array for a mean wind speed of 8 m/s, TI 5%, and low shear – the waked turbines can produce significantly less power than the free-stream unit. To verify the impact of compliance of the floating substructure, we analyze the relative difference between generator power of the floating turbines with respect to their fixed counterparts:

$$R_{P,i} = \frac{\bar{P}_i^{\text{floating}} - \bar{P}_i^{\text{fixed}}}{\bar{P}_i^{\text{fixed}}}, \quad (6)$$

where $\bar{P}_i^{\text{floating}}$ and \bar{P}_i^{fixed} are the mean generator power of turbine i in the floating and fixed conditions, respectively. The value of $R_{P,i}$ across the three-turbine array is illustrated in Fig. 10(b) for the same wind condition as Fig. 10(a) but different wave



conditions, showing how each floating turbine compares with its fixed counterpart. Figs. 10(c) to 10(k) shows how $R_{P,i}$ varies for each turbine in the array across all the environmental conditions considered in this work.

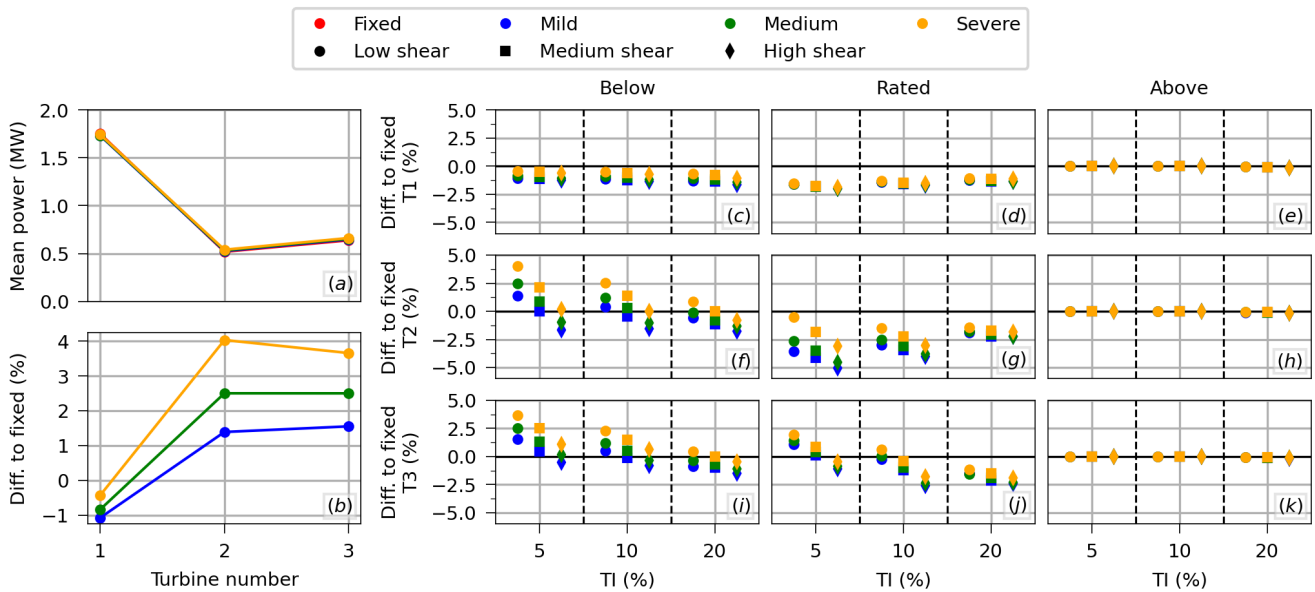


Figure 10. (a) Illustration of the mean generator power along the array for a given wind condition (mean wind speed 8 m/s, TI 5%, and low shear). (b) Relative difference between the floating turbines along the array and their fixed counterpart for the same wind condition as (a) and all wave conditions. The relative difference between floating to fixed across all environmental conditions for (c-e) the first turbine in the array, (f-h) the second, and (i-k) the third.

The results demonstrate that the free-stream floating turbine (T1) generates, on average, less power than its fixed counterpart for below and rated conditions. This is due to the mean floater pitch angle, which reduces power by reducing the effective swept area with respect to the incoming wind (similar to yaw misalignment). Hence, cases with larger mean pitch angles perform worse in terms of generator power than cases with smaller mean pitch angles. The largest difference in generator power for the free-stream floating turbine occurs at rated condition for TI = 5% and high shear, with a power reduction of 2%. While the sea condition does not impact significantly $R_{P,i}$ at rated mean wind speed, the severity of the sea state slightly improves the performance of the free-stream floating turbine in below-rated condition – increasing by about 0.6% when comparing the severe and the mild sea states. This increase in power with sea state severity arises because the waves induce floater and rotor motion, which increases and decreases the relative wind speed at, and power extracted from, the rotor, with the increases outweighing the decreases due to the cubic relationship of power to wind speed. This trend, however, is likely heavily tied to the turbine controller and could be different with a different controller. For the above-rated condition, the floating and fixed turbines generate practically the same mean power due to the action of the control system.

For the waked turbines in below-rated condition, Figs. 10(f) to 10(k) show that the floating turbines yield more power than their fixed counterparts in a few cases. This is a consequence of the larger vertical wake deflection and the floater motions



compensating for the power reduction due to the mean pitch angle in those cases. This improvement reduces with TI and shear, in such a way that the best scenario for the waked floating turbine (in terms of power production compared to the fixed case) is in low TI, low shear, and severe sea state. For rated mean wind speed, the first waked floating turbine (T2) produces less power than its fixed counterpart for all conditions, with the different sea states and shear conditions converging to the same results as TI increases. The second waked floating turbine (T3) behaves similarly to T2 in below rated, but it is different in rated condition: due to the larger vertical wake deflection, floating T3 compares better to fixed T3, to the point that it produces more power than its fixed counterpart in low shear and low TI. T3 also exhibits less sensitivity to the sea condition than T2. Just like for the free-stream turbine, the waked floating and fixed turbines generate the same mean power for the above-rated condition.

The balance between these different effects – (i) mean power reduction due to mean floater pitch angle, (ii) mean power increase for waked turbines due to larger vertical wake deflection, and (iii) mean power increase due to floater motions – dictates how the floating array compares with the fixed array. This is illustrated in Fig. 11, with the top row showing the mean generated power of the whole farm (summed across all three turbines), and the bottom row showing the relative difference between the floating and the fixed arrays. The differences in mean generator power between the floating and fixed arrays are small, being within -2.6% and 1.5% depending on the environmental condition. Like the behavior observed for the turbines individually, for below and rated conditions, the performance of the floating array with respect to the fixed array increases with the severity of the sea state but decreases with both increasing shear and increasing TI. Compared to the fixed array, the floating array produces less power in most cases, with the exceptions being some cases in below-rated condition for the severe and medium sea states.

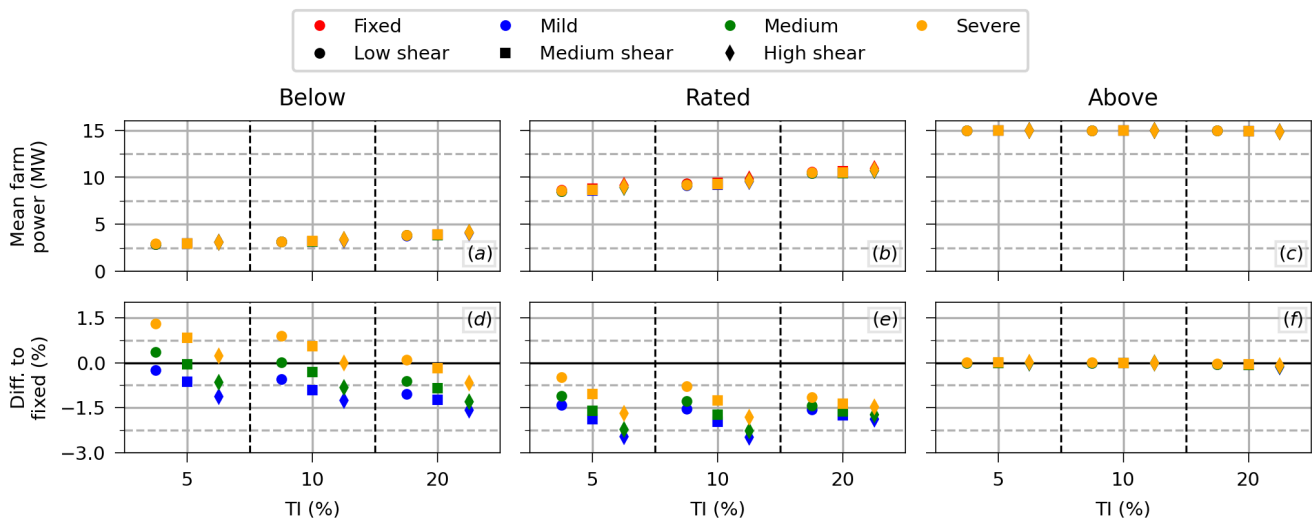


Figure 11. (a) Mean generated power of the whole farm for all environmental conditions, and (b) the relative difference between the floating farm and the fixed farm.



Concerning power fluctuation, Fig. 12 presents the PSD of the generator power, evidencing the two frequency ranges of interest: (i) the low frequencies of the turbulent incoming wind (shown in the top row), and (ii) the oscillation at the wave-frequency range (shown in the bottom row), which is increasingly more pronounced with the severity of the sea state. For the severe sea state, we can notice a peak in Figs. 12(d) to 12(f) that is due to the wave-frequency range encompassing the natural
 390 frequency of heave for this relatively large peak period.

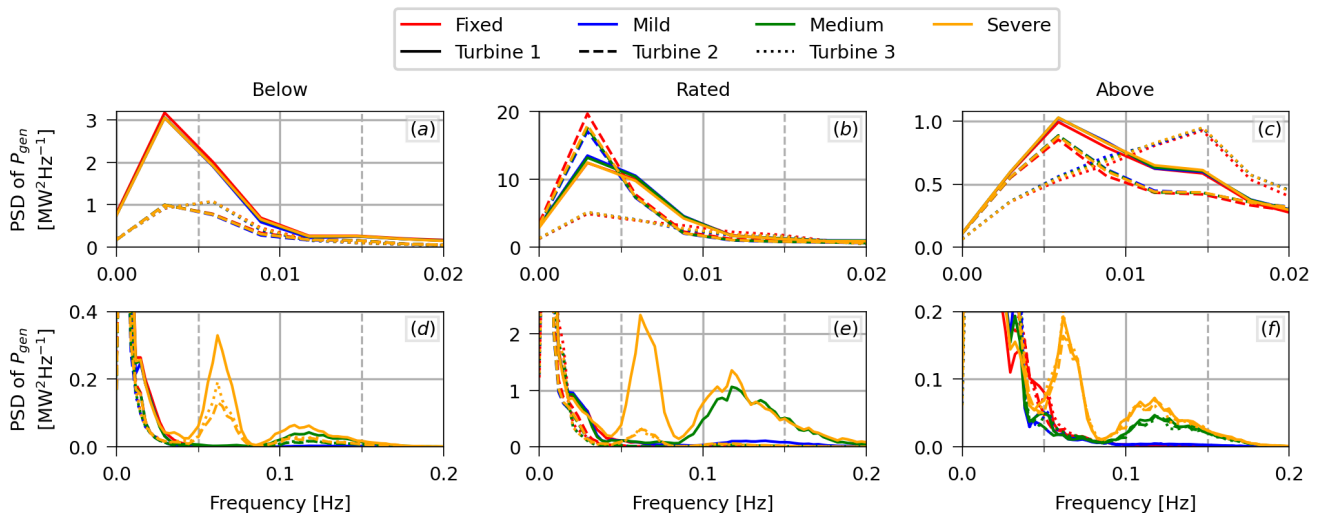


Figure 12. PSD of the generator power of each turbine in the array for low shear, $TI = 5\%$, and for the three different mean wind speeds. The first row (a-c) corresponds to the low frequencies that are excited by the turbulent wind, while the second row (d-f) corresponds to the frequencies that are excited by the waves.

As expected, the motions of the floating substructure introduce power oscillations at the frequency of the waves that are not present in the fixed case, but these occur with a much lower intensity than the oscillations at the frequency of the turbulent wind. On the other hand, the mean floater pitch angle slightly reduces the oscillations at the frequency of the turbulent wind for the below-rated and rated conditions, similar to how it reduces the mean generator power. The magnitude of this reduction
 395 at the frequency of the turbulent wind is proportional to the turbulence intensity.

Figure 13 shows the impact of those two opposite effects on the standard deviation of the generated power of the whole farm. For the below- and rated conditions, the reduction of standard deviation at the frequency of the turbulent wind due to the mean pitch angle is more pronounced for the cases with larger TI, offsetting the increase in standard deviation due to the motions of the floating substructure that can be clearly seen in the low TI cases. For the above-rated condition, the control system is
 400 able to attenuate the fluctuations at the frequency of the turbulent wind – notice that the PSD values presented in Fig. 12(c) are much lower than in Fig. 12(b) even though the standard deviation of wind fluctuation, given by $\sigma_u = U_{mean} \cdot TI$, is larger – but it is incapable of attenuating the relatively high-frequencies of the incoming waves. Hence, for the above-rated condition, the standard deviation of the generated power of the floating array is larger than the fixed array irrespective of the turbulence level.

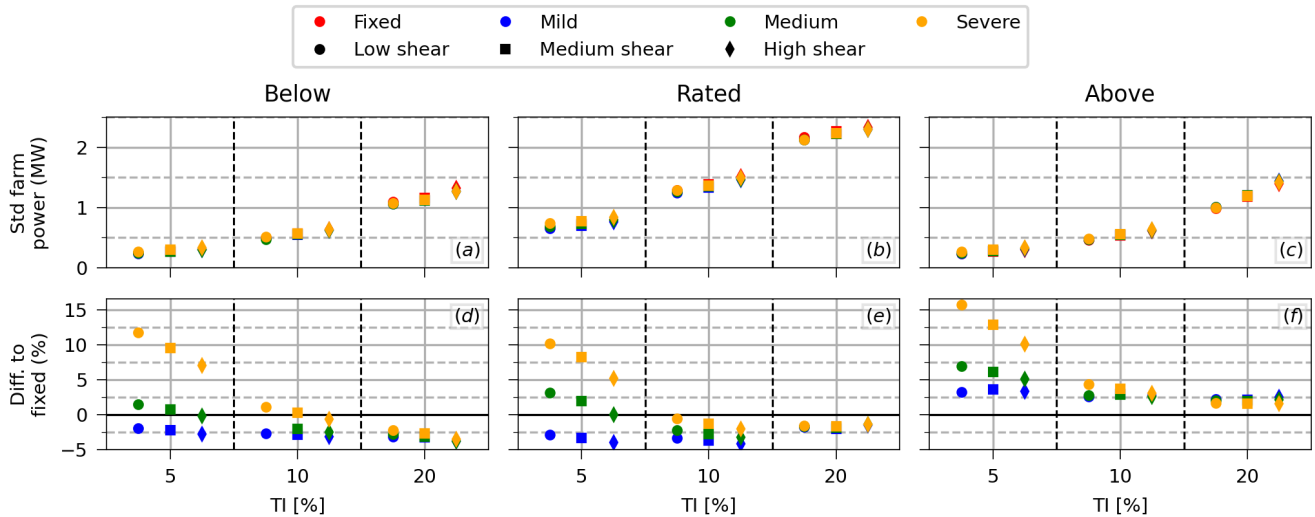


Figure 13. (a-c) Standard deviation of the generated power of the whole farm for all environmental conditions, and (d-f) the relative difference between the floating and the fixed farm.

4.2 Tower-base moment

405 Though the mean loads play a part in the DEL (as a result of the Goodman correction applied), the dynamic variation of the loads – which can be measured by the standard deviation – is the main factor influencing the DEL. Figure 14(a) illustrates how the mean and standard deviation of the tower-base moment (in the fore-aft direction) vary along the array for a given wind condition (mean wind speed of 8 m/s, TI 5%, and low shear). For this particular case, the mean tower-base moment decreases from the free-stream (T1) to the first waked turbine (T2) and then increases again for the second wake turbine (T3) regardless of the turbine being floating or fixed. This behavior of the mean tower base moment is directly related to the mean thrust force. 410 of the turbine being floating or fixed. This behavior of the mean tower base moment is directly related to the mean thrust force. The floating system has slightly higher means than the fixed system due to mean floater pitch.

Differently, the standard deviation presents qualitative differences between the fixed and floating cases that show in the DEL. As presented in Fig. 14(b), even though the DEL of the floating turbines is always larger than the DEL of their fixed counterparts (due to wave-induced floater motion, which increases with sea state severity), a difference between the fixed and floating cases is how the waked turbines compare to the free-stream turbine. Fig. 14(b) shows that, for this particular case, the DEL of the tower-base moment (which includes the contribution from both the fore-aft and side-to-side tower-base moments) increases from T1 to T2 for the fixed case, but it decreases from T1 to T2 for the floating case. 415 floating cases is how the waked turbines compare to the free-stream turbine. Fig. 14(b) shows that, for this particular case, the DEL of the tower-base moment (which includes the contribution from both the fore-aft and side-to-side tower-base moments) increases from T1 to T2 for the fixed case, but it decreases from T1 to T2 for the floating case.

To investigate this difference between the fixed and floating arrays, Fig. 14(c) to 14(e) presents the tower-base moment DEL for the fixed and floating turbines across all the environmental conditions considered in this work. The other two rows of Fig. 14 present the relative difference between T2 and T1 (Fig. 14(f) to 14(h)) and between T3 and T1 (Fig. 14(i) to 14(k)). 420 present the relative difference between T2 and T1 (Fig. 14(f) to 14(h)) and between T3 and T1 (Fig. 14(i) to 14(k)).

Figures. 14(c) to 14(e) show that the DEL of the tower-base moment increases with the severity of the sea state, TI, and shear. Though not shown in the plots, this trend with respect to sea state, TI, and shear is true for the waked turbines as well.

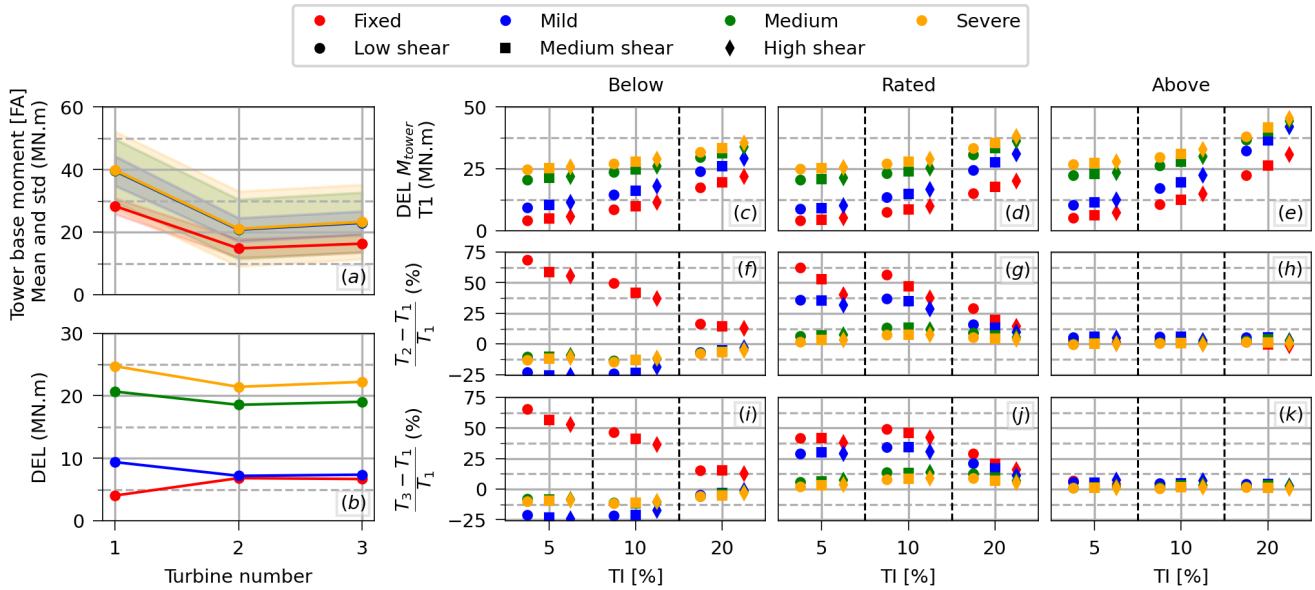


Figure 14. (a) Illustration of the mean (solid line) and standard deviation (shaded area) of the fore-aft tower-base moment along the array for a given wind condition (mean wind speed 8 m/s, TI 5%, low shear). (b) similar illustration, but for the tower-base moment DEL. (c-e) DEL of the tower-base moment of the free-stream turbine (T1) across all the environmental conditions considered in this work. The relative difference between the tower-base moment DEL of (f-h) the first waked turbine (T2) and T1, and (i-k) the second waked turbine (T3) and T1.

Figures. 14(f) to 14(h) and Figs. 14(i) to 14(k) evidence that the reduction in DEL from T1 to T2 for the floating case observed in Fig. 14(b) is exclusive to below-rated conditions. For the rated condition, the waked turbines present larger DEL than T1 regardless of being fixed or floating, but this difference is less important with the severity of the sea state. This is a consequence of the relevance of the oscillations introduced by the waves, which makes the free-stream and waked turbines more similar. For above rated, though the tower-base moment DEL of the waked turbines is similar to the DEL of the free-stream turbines, the values for the waked floating turbines can be about 10% larger than for the free-stream floating. Note that this analysis compares the waked turbines to the free-stream turbine,

To better understand the physical effects leading to the trends observed in Fig. 14, we analyse the PSDs of the tower-base moment at the different frequencies of interest. There are four frequency ranges of interest: (i) the slow frequencies induced by the turbulent wind spectrum; (ii) the frequency range of the incoming waves, which is different for each sea state; (iii) the natural frequency of pitch; and (iv) the blade-passing frequency (3P). These different frequency ranges are illustrated in Fig. 15, which presents the PSD of the fore-aft tower-base moment of the turbines for three distinct conditions. For the severe sea state, the wave-frequency range encompasses the natural frequency of heave (0.056 Hz, as also pointed out when discussing power), leading to one of the peaks identified in the PSD. Here, we focus on the fore-aft tower base moment because its contribution to the DEL is much more relevant than the side-to-side bending moment due to the wave and wind incidence of 0°.

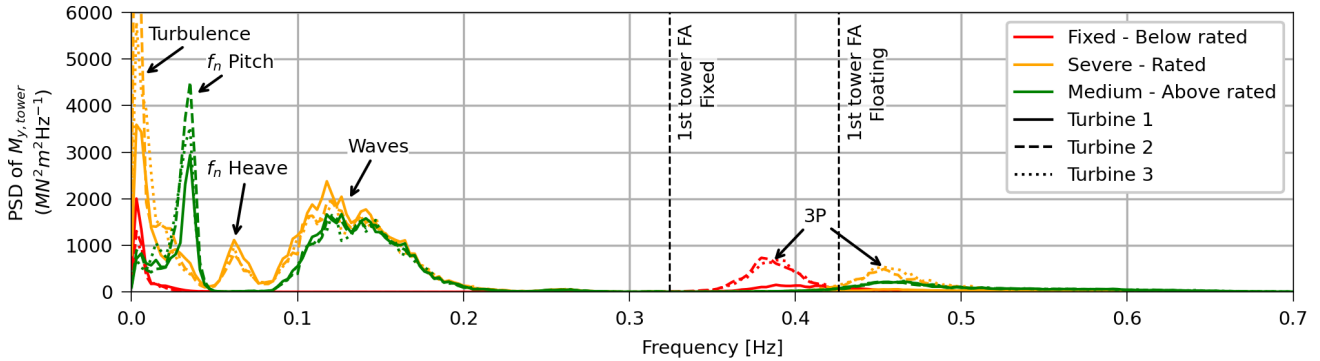


Figure 15. PSD of the fore-aft tower-base moment illustrating the distinct frequencies of interest. The examples in the figure consider TI 10% and medium shear

Figure 16 presents the PSD of the fore-aft tower-base moment at the frequency range most excited by the turbulent wind for the three different mean wind speeds (below, at and above rated). Each row focuses on the impact of a different aspect. The first row, Figs 16(a) to (c), shows that the tower-base moment excited by the turbulent wind does not depend on the sea state, as expected, but it is larger for the floating turbines than for the fixed turbines. The reason is that while the tower of a fixed turbine mostly has to resist the oscillations of aerodynamic loads, the tower of a floating turbine also has to resist the inertial loads caused by the motions of the floating substructure induced by the fluctuating wind.

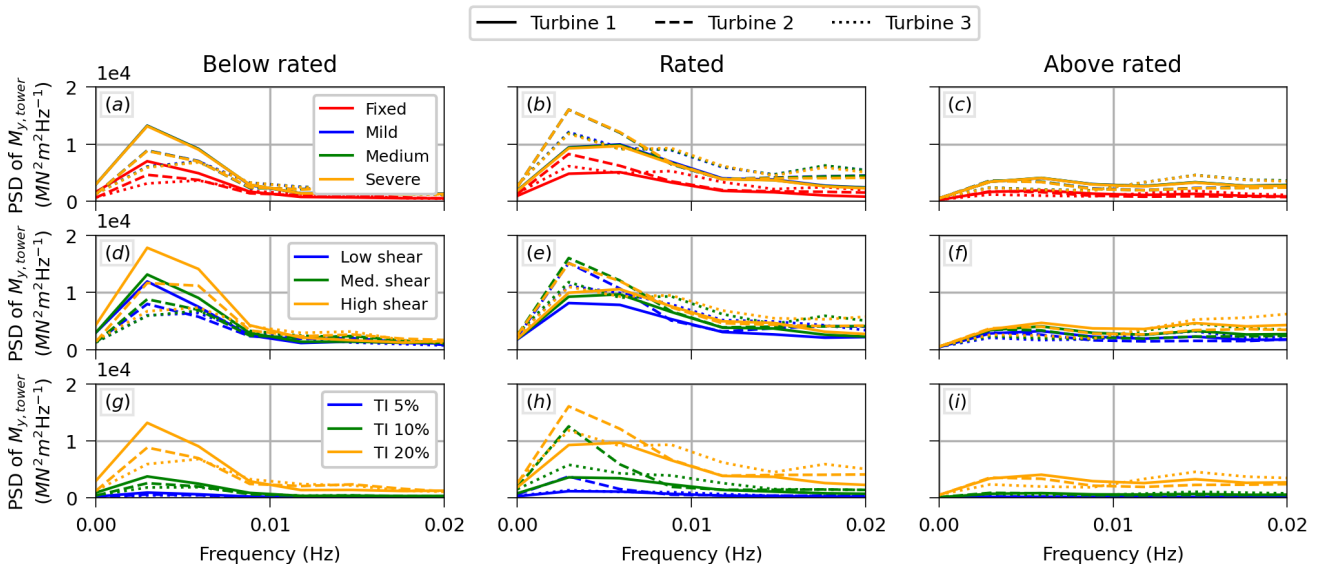


Figure 16. PSD of the fore-aft tower-base moment at the frequency range excited by the turbulent wind for the three different mean wind speeds. (a-c) Different sea conditions for TI 20% and medium shear. (d-f) Different shear conditions for the severe sea state and TI 20%. (g-i) Different TI conditions for the severe sea state and medium shear.



For both floating and fixed turbines, the waked turbines have lower oscillations of the tower-base moment induced by the
445 turbulent wind in the below-rated condition, a result of the lower apparent wind speed and consequent lower thrust. The
opposite happens in rated condition, with the waked turbines presenting larger oscillations of the tower-base moment because
they are operating in a below-rated condition due to the velocity deficit. In the above-rated condition, the waked and free-stream
turbines are very similar, due to the weak wake deficit and low thrust when the blades are pitched. As expected, the importance
of the oscillations of the tower-base moment induced by the turbulent wind increases with turbulence intensity, as evidenced
450 by Figs 16(g) to Figs 16(i). Figs 16(d) to Figs 16(f) show that the impact of shear is less relevant, with the oscillations of the
tower-base moment increasing with shear. The effect of shear is mostly noticeable for the below-rated wind speed, being less
relevant for the rated condition and practically negligible for the above-rated condition.

Figure 17 presents the PSD of the fore-aft tower-base moment at the wave-frequency range. The top plot, Fig. 17(a), ev-
idences the large impact of sea state severity on the tower-base moment. The wave-frequency range is especially important
455 because it is wide, thus contributing significantly to the standard deviation, and occurs at relatively high frequencies (relative
to the low-frequency wind), thus impacting heavily the tower-base moment DEL. As shown by Fig. 17(b), the wind condition
impacts the tower-base moment at the wave-frequency range only slightly via the mean wind speed, but the impact of shear or
TI is negligible in the wave-frequency range.

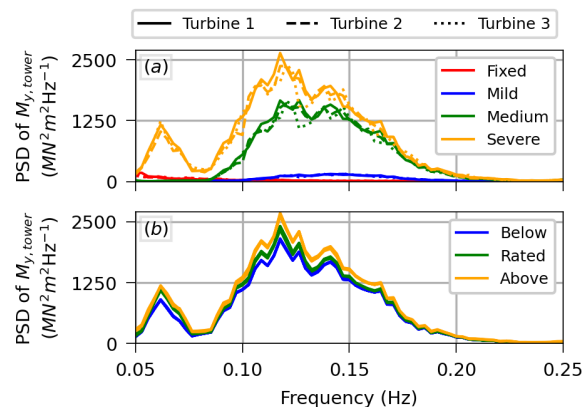


Figure 17. PSD of the fore-aft tower-base moment at the incoming wave-frequency range. (a) Different sea states for a given wind condition (mean wind speed 18.0 ms^{-1} , TI 10%, and medium shear). (b) For the severe sea state, the response of the second turbine of the array (T2) for all the wind conditions considered in this work (different TI and shear levels are not explicitly distinguished in the plot).

Though other frequency ranges are also responsible for the larger tower-base moment DEL of the floating turbines compared
460 to their fixed counterparts – such as the 3P frequency range discussed ahead – most of this difference is due to the wave-
frequency range. Besides, because the wave-frequency range has a large contribution to the DELs and it is not affected by
the wake, the wake effects are not as important for the tower-base moment of the floating array as for the fixed array (see
Figs 14(f) to 14(k)).



Besides the wave-frequency range, another frequency range of interest exclusively experienced by the floating turbines is the natural frequency of pitch of the floating substructure, about 0.039 Hz. This frequency is excited by the control system in above-rated speeds as the rotor-collective blade-pitch controller resonates with the natural frequency of pitch of the floating substructure. Hence, it is observed for the above-rated mean wind speed and, to a smaller extent, for the rated mean wind speed as the relative wind speed oscillates between below and above rated. This frequency range is illustrated in Fig. 18 for the above-rated mean wind speed only. As expected, the intensity of the oscillations at this frequency range increases with the turbulence intensity, as shown in Fig. 18(c). It also increases with shear, as presented in Fig. 18(b), but to a smaller extent. It is more significant for the waked turbines than for the free-stream turbine.

Perhaps surprisingly, Fig. 18(a) shows that the magnitude of the oscillations at this frequency range decreases with the severity of the sea state. Though the slow floater pitch induced by the second-order wave loads is indeed larger for the mild sea state in wave-only conditions, the wave loading is negligible for the slow pitch in face of the turbulent wind, hence it is not the explanation. It is not clear why this happens, but it is possible that the larger motions induced at the frequency of the waves increase the damping at the natural frequency of pitch. It is worth mentioning that these oscillations at the natural frequency of pitch could be attenuated by adapting the controller, for instance by adding a floating feedback term to the pitch control signal (Abbas et al., 2021), but this feedback is not included in the baseline controller used here.

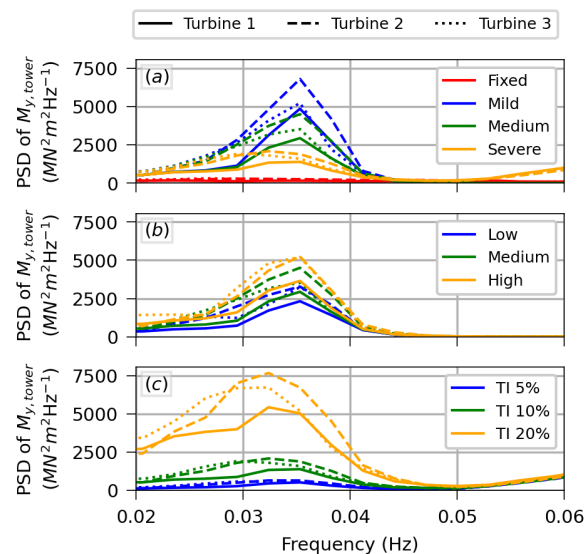


Figure 18. PSD of the fore-aft tower-base moment around the natural frequency of pitch for the above-rated condition (mean wind speed 18.0 ms^{-1}). (a) Different sea conditions for TI 10% and medium shear. (b) Different shear conditions for the severe sea state and TI 10%. (c) Different TI conditions for the severe sea state and medium shear.

The last range of interest is the blade-passing frequency range, illustrated in Fig. 19. The middle and bottom rows, Figs 19(d) to 19(i), show that the fore-aft tower-base moment at the 3P frequency range increases with shear, though only slightly in rated

condition, and with TI. The top row, Figs 19(a) to 19(c), shows that the fore-aft tower base moment at the 3P frequency range is insensitive to the sea state, which is expected for this frequency range that is rotor dominated, but shows an interesting qualitative difference between the floating and fixed turbines. Due to the different boundary condition at the base of the tower, the first natural bending frequency of the tower for the fixed condition is 0.324 Hz, significantly lower than for the tower atop the OC4-DeepCwind semisubmersible, 0.426 Hz. As a consequence, for the below-rated mean wind speed, the waked fixed turbines present a larger tower-base moment at the 3P frequency than the free-stream turbine because they operate at lower rotor speeds, due to the reduced apparent wind speed, which are closer to the first natural bending frequency of the tower. The opposite happens for the waked floating turbines, with the reduction in wind speed bringing the 3P frequency further from the first natural bending frequency of the tower. This effect is only present for the below rated wind speed, and is the reason for the reduction in the DEL of the tower-base moment from T1 to T2 and T3 observed in Figs. 14(f) and 14(i). Clearly, this reduction in DEL from T1 to the waked turbines depends on the tower natural frequency. For the rated condition, the waked turbines present larger loads than T1 at the 3P range for both the fixed and floating turbines. No difference is observed between waked and free-stream turbines for the above-rated condition, due to the weak wake deficit and low thrust when the blades are pitched.

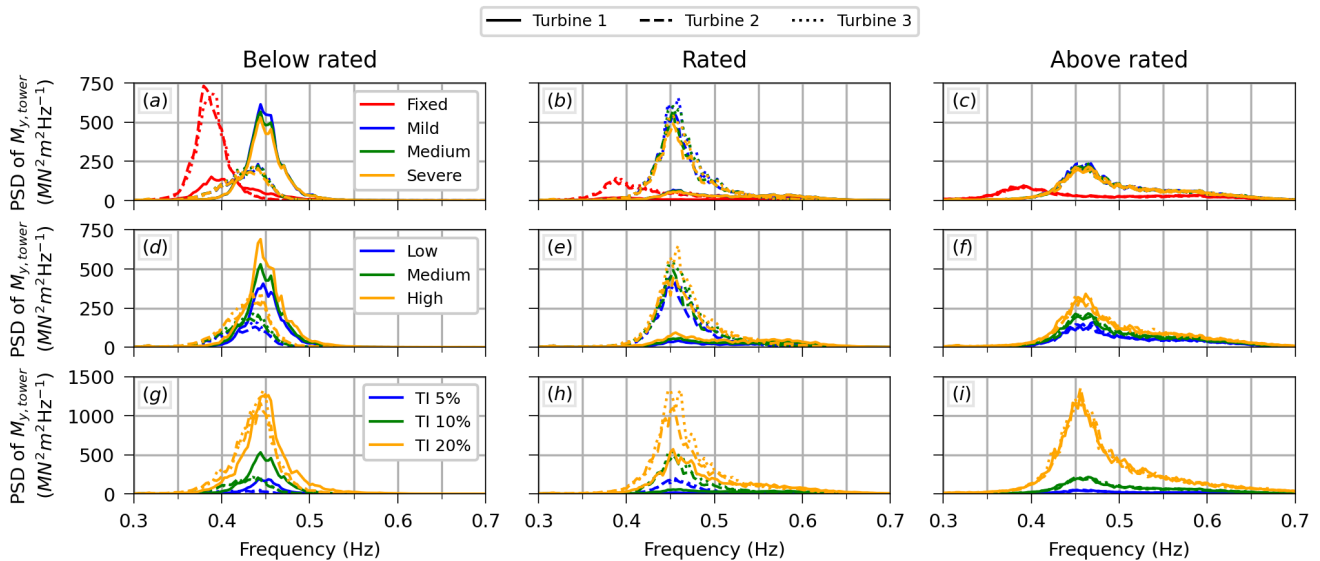


Figure 19. PSD of the fore-aft tower-base moment at the 3P frequency range for the three different mean wind speeds. (a-c) Different sea conditions for TI 20% and medium shear. (d-f) Different shear conditions for the severe sea state and TI 20%. (g-i) Different TI conditions for the severe sea state and medium shear.



495 **4.3 Blade-root moment**

Figure 20(a) illustrates how the mean and standard deviation of the blade-root moment – in the out-of-plane direction – vary along the array for a given wind condition (mean wind speed of 8 m/s, TI 5%, and low shear). Figure 20(b) is a similar plot but for the blade root moment DEL resulting from both the out-of-plane and in-plane blade root moments. Figure 14(c) to 14(k) presents the blade-root moment DEL (combining the effects of out-of-plane and in-plane moments) for the fixed and floating turbines across all the environmental conditions considered in this work. As a whole, Figure 20 shows that the blade-root moment DEL of the floating turbines is very similar to the one exhibited by the fixed turbine.

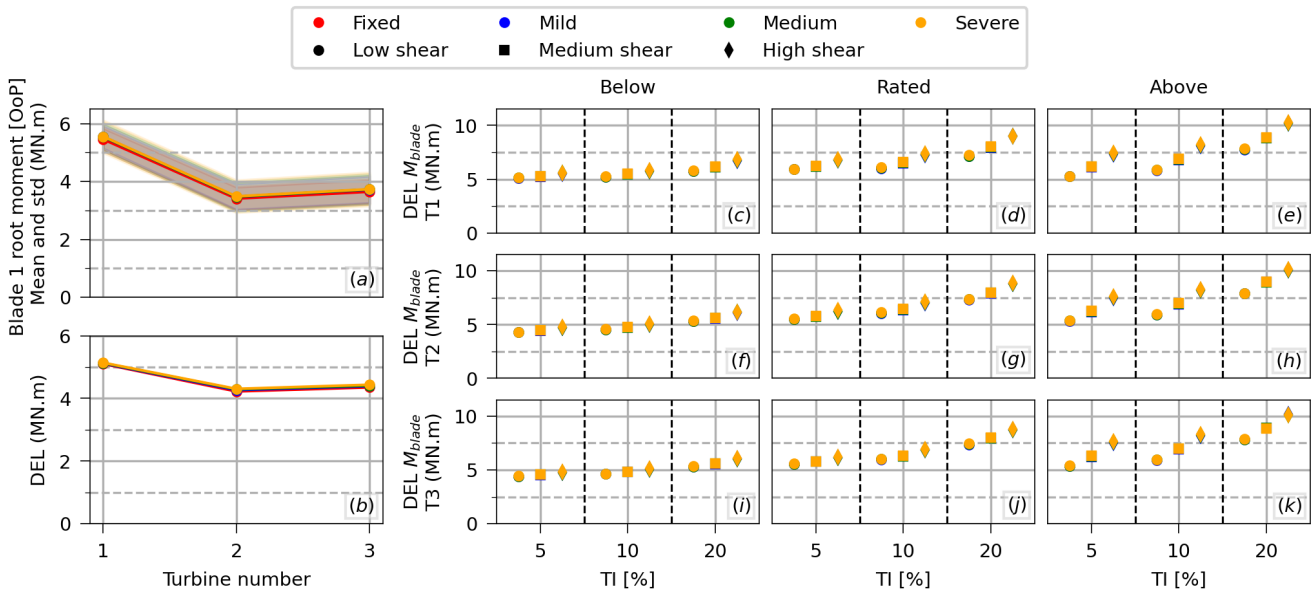


Figure 20. (a) Illustration of the mean (solid line) and standard deviation (shaded area) of the out-of-plane blade-root bending moment along the array for a given wind condition (mean wind speed 8 ms^{-1} , TI 5%, low shear); (b) similar illustration, but for the blade-root bending moment DEL; and the relative difference between the blade-root bending moment DEL of the floating turbines compared to their fixed counterparts for all environmental conditions for (c-e) the first turbine in the array, (f-h) the second, and (i-k) the third.

Some cases with low turbulence do present large relative differences in the standard deviation of the out-of-plane blade root moment, which is caused by the larger inclination of the floating substructure (due to the mean platform pitch) shifting part of the contribution of the weight of the blades from the in-plane moment to the out-of-plane moment. However, as illustrated in Fig. 21, this effect is only observable in cases where the contribution of the out-of-plane blade root moment for the DEL is negligible in face of the in-plane blade root moment. For large TI cases, for which the out-of-plane component is relevant, the out-of-plane blade root moment observed for the floating turbines is very similar to the fixed turbines.

For all the wind conditions analyzed, no significant blade moment is observed at the wave-frequency range.

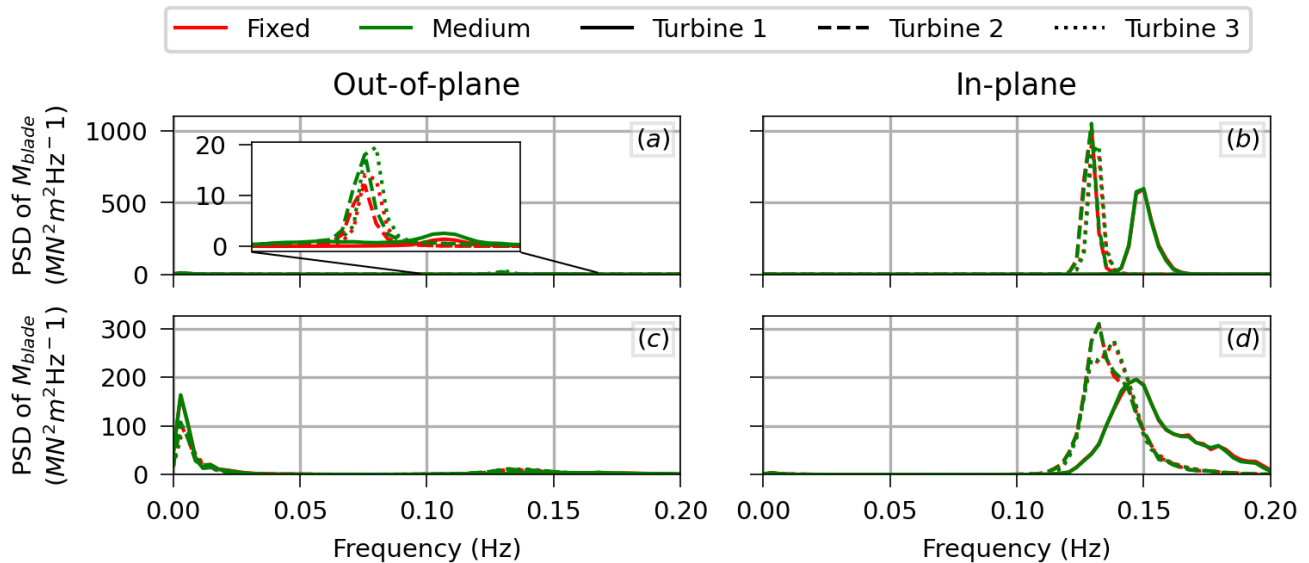


Figure 21. PSD of the out-of-plane (left) and in-plane (right) blade-root bending moments for mean wind speed 8 ms^{-1} , low shear and (a-b) TI 5%, (c-d) TI 20%.

5 Conclusions

510 This work presented an investigation on the mutual interaction between the motions of floating wind turbines and wakes using FAST.Farm. Since FAST.Farm had never been validated for FOWT applications, the paper consists of two parts: a validation against high-fidelity simulation results reported in the literature, and the study of a three-unit floating array across a wide range of environmental conditions. For both parts, we considered the NREL 5-MW reference wind turbine atop the OC4-DeepCWind semisubmersible.

515 The validation process against LES results showed that the original, axisymmetric (polar) wake model of FAST.Farm overpredicts the vertical wake deflection induced by shaft tilt and floater pitch. On the other hand, the new curled wake model provides a very good agreement with the LES results. The validation process also evidenced two limitations of the FAST.Farm model. The first is a nonphysical behavior of the wake of the floating turbines in place of what in reality would be pulsations in the wake associated with floater motion that is visible in the flowfield snapshots of the simulations. This behavior is exclusive
 520 to floating wind applications and is due to a limitation of the current formulation employed in FAST.Farm. For now, we adopted a workaround that consists in filtering the impact of oscillations of the floater on the wake. Though this leads to a reduction in the amplitude of pulsations in the wake induced by motions of the floating substructure, it is not expected to significantly affect the conclusions of the present work, although this limitation should be assessed in future work. The second limitation is the
 525 lack of an atmospheric Coriolis effect captured by LES that is not in FAST.Farm. Together with differences in the inflow, this leads to some differences between the horizontal wake deflection predicted with the curled wake model and the LES results.



Overall, though, this horizontal deflection is small and is not expected to significantly affect the conclusions of this work (and will be latitude dependent).

In the second part of this work, we used FAST.Farm to analyze a three-unit floating array across a wide range of environmental conditions, including variations in mean hub-height wind speed (below, at, and above rated), shear profile (low to high
530 shear), turbulence intensity (low to high turbulence levels), and sea state severity (mild, medium, and severe). The turbines were aligned with both the wind and the waves with a spacing of seven diameters ($7D = 882\text{m}$). To assess the impact of compliance of the floating substructure, we compared the power production, tower-base moments, and blade-root moments obtained for the floating turbines with the ones obtained in a fixed configuration. The main differences introduced by the compliance of the floating substructure are the motions induced by the waves and wind, the change in the natural frequencies of the tower caused
535 by differences in the boundary condition at tower bottom, and the larger vertical wake deflection due to the mean pitch of the platform.

Concerning the mean generator power, the performance of the floating array compared to the equivalent fixed array is the outcome of three different effects: (i) the mean pitch angle of the floating substructure, which reduces power by increasing the relative angle between the rotor and the incoming wind (similar to yaw misalignment); (ii) the motions of the floating
540 substructure, which tend to increase generator power in below-rated condition (an effect that could be different depending on turbine control); and (iii) the larger vertical wake deflection compared to the fixed turbine, which increases the power available to downwind units. Because shear and TI play a role in the wake, they affect the performance of the downstream turbines. Overall, the best scenario observed for the waked floating turbines (in terms of power production compared to the fixed case) is in below-rated wind speed, low TI, low shear, and severe sea state; although this scenario is not expected to be common in
545 reality.

The motions of the floating substructure increase the oscillations of the generator power compared to the fixed structure. However, for the medium and high turbulence levels, this effect is offset by smaller oscillations of power at the frequency range of the turbulent wind for the floating turbines—due to the mean pitch angle of the platform—in below- and at-rated conditions. In above-rated conditions, the control system can attenuate the fluctuations at the frequency of the turbulent wind
550 but not wave-induced fluctuations, resulting in larger power fluctuation for the floating array compared to the fixed array regardless of turbulence levels.

The tower-base moment of the floating turbines is considerably larger than that of their fixed counterparts, with certain cases exhibiting DELs nearly seven times greater. This is mostly due to the large contribution of the inertial loads caused by the motions of the floating substructure. Because of the large influence of these inertial loads, which are insensitive to the wake, wake effects are less relevant for the tower-base moment of the floating turbines than for the fixed turbines. Moreover, while
555 the wake increases the tower-base moment DEL of the fixed turbine for all wind conditions—except above rated, where wake effects did not play a significant role—this is not always the case for the floating turbines. For the below-rated condition, the waked floating turbines presented a lower tower-base moment DEL than the free-stream unit. This reduction is related to the lower 3P frequency of the waked turbines compared to the free-stream unit, which happens in the below-rated condition, and



560 to the higher natural bending frequency of the tower for the floating case. This effect depends on the natural frequencies of the tower, so that a different behavior might be observed for other concepts.

Motions of the floating substructure did not impact the blade-root moment in a meaningful way. Therefore, the blade-root moment DEL of the floating turbines, both free-stream and waked, is very similar to the one exhibited by their fixed counterparts for all environmental conditions analyzed in this work.

565 A natural progression for the present work is to address the limitations of FAST.Farm observed during validation to capture pulsations in the wake associated with floater motions and the Coriolis effect. Moreover, a similar analysis could be performed considering other wind farm layouts (including the number of turbines, their placement, and their spacing), wind and wave directionality, different floater concepts, and different turbine sizes. Other quantities of interest, such as tower-base yaw moment and mooring loads, should also be investigated.

570 *Code and data availability.* Simulations were performed using FAST.Farm (available at github.com/OpenFAST/openfast). Data is available from the authors upon request.

Author contributions. LC: Methodology, investigation, data curation, formal analysis, validation, writing (original draft); JJ: Conceptualization, formal analysis, supervision, funding acquisition; writing (review and editing); RT: data curation, supervision.

Competing interests. The authors declare no competing interests.

575 *Acknowledgements.* This work was authored by the National Renewable Energy Laboratory, operated by the Alliance for Sustainable Energy, LLC, for the U.S. Department of Energy (DOE) under Contract No. DE-AC36-08GO28308. Funding provided by the U.S. Department of Energy Office of Energy Efficiency and Renewable Energy Wind Energy Technologies Office. The views expressed in the article do not necessarily represent the views of the DOE or the U.S. Government. The U.S. Government retains and the publisher, by accepting the article for publication, acknowledges that the U.S. Government retains a nonexclusive, paid-up, irrevocable, worldwide license to publish
580 or reproduce the published form of this work, or allow others to do so, for U.S. Government purposes. The research was performed using computational resources sponsored by the Department of Energy's Office of Energy Efficiency and Renewable Energy and located at the National Renewable Energy Laboratory.



References

- Abbas, N., Zalkind, D., Pao, L., and Wright, A.: A reference open-source controller for fixed and floating offshore wind turbines, *Wind Energy Science*, 2021, 1–33, 2021.
- Angelou, N., Mann, J., and Dubreuil-Boisclair, C.: Revealing inflow and wake conditions of a 6MW floating turbine, *Wind Energy Science Discussions*, 2023, 1–35, 2023.
- Branlard, E., Martínez-Tossas, L., and Jonkman, J.: A time-varying formulation of the curled wake model within the FAST.Farm framework, *Wind Energy*, 26, 44–63, 2023.
- Churchfield, M. and Lee, S.: SOWFA: Simulator fOr Wind Farm Applications, <https://nwtc.nrel.gov/SOWFA>, 2015.
- Doubrawa, P., Annoni, J., and Jonkman, J.: Optimization-based calibration of FAST.Farm parameters against large-eddy simulations, in: 2018 Wind Energy Symposium, p. 0512, 2018.
- Equinor: Hywind Scotland, <https://www.equinor.com/energy/hywind-scotland>, 2023.
- Fleming, P., Gebraad, P., Lee, S., van Wingerden, J.-W., Johnson, K., Churchfield, M., Michalakes, J., Spalart, P., and Moriarty, P.: Simulation comparison of wake mitigation control strategies for a two-turbine case, *Wind Energy*, 18, 2135–2143, 2015.
- Fu, S., Jin, Y., Zheng, Y., and Chamorro, L.: Wake and power fluctuations of a model wind turbine subjected to pitch and roll oscillations, *Applied Energy*, 253, 113 605, 2019.
- Gaertner, E., Rinker, J., Sethuraman, L., Zahle, F., Anderson, B., Barter, G., Abbas, N., Meng, F., Bortolotti, P., Skrzypinski, W., Scott, G., Roland, F., Bredmose, H., Dykes, K., Shields, M., Allen, C., and Viselli, A.: IEA Wind TCP Task 37: Definition of the IEA 15-megawatt offshore reference wind turbine, Tech. rep., National Renewable Energy Lab.(NREL), Golden, CO (United States), 2020.
- GWEC: GLOBAL WIND REPORT 2023, Tech. rep., Global Wind Energy Council, https://gwec.net/wp-content/uploads/2023/04/GWEC-2023_interactive.pdf, 2023.
- Hall, M.: MoorDyn user’s guide, Tech. rep., University of Maine, Orono, ME, USA, 2015.
- Huang, Y. and Wan, D.: Investigation of interference effects between wind turbine and spar-type floating platform under combined wind-wave excitation, *Sustainability*, 12, 246, 2019.
- IEC: Wind turbines - Part 1: Design requirements, Tech. rep., International Electrotechnical Commission (IEC), 2005.
- Johlas, H., Martínez-Tossas, L., Schmidt, D., Lackner, M., and Churchfield, M.: Large eddy simulations of floating offshore wind turbine wakes with coupled platform motion, in: *Journal of Physics: Conference Series*, vol. 1256, p. 012018, <https://doi.org/10.1088/1742-6596/1256/1/012018>, 2019.
- Johlas, H., Martínez-Tossas, L., Lackner, M., Schmidt, D., and Churchfield, M.: Large eddy simulations of offshore wind turbine wakes for two floating platform types, in: *Journal of Physics: Conference Series*, vol. 1452, p. 012034, IOP Publishing, 2020.
- Johlas, H., Martínez-Tossas, L., Churchfield, M., Lackner, M., and Schmidt, D.: Floating platform effects on power generation in spar and semisubmersible wind turbines, *Wind Energy*, 24, 901–916, 2021.
- Johlas, H., Schmidt, D., and Lackner, M.: Large eddy simulations of curled wakes from tilted wind turbines, *Renewable Energy*, 188, 349–360, 2022.
- Jonkman, B.: TurbSim user’s guide: Version 1.50, Tech. rep., National Renewable Energy Lab.(NREL), Golden, CO, USA, 2009.
- Jonkman, B., Mudafort, R., Platt, A., Branlard, E., Sprague, M., Jonkman, J., Ross, H., Hayman, G., Hall, M., Vijayakumar, G., Buhl, M., Bortolotti, P., Ananthan, S., Rood, J., Damiani, R., Mendoza, N., Long, H., Schunemann, P., Slaughter, D., Sharma, A., Shaler,



- K., Housner, S., Sakievich, P., Bendl, K., Carmo, L., Quon, E., Phillips, M., Kusuno, N., and Salcedo, A.: OpenFAST/openfast: v3.4.1, <https://doi.org/10.5281/zenodo.6324287>, 2023.
- Jonkman, J. and Shaler, K.: FAST.Farm user's guide and theory manual, Tech. rep., National Renewable Energy Lab.(NREL), Golden, CO, USA, 2021.
- Jonkman, J., Butterfield, S., Musial, W., and Scott, G.: Definition of a 5-MW reference wind turbine for offshore system development, Tech. rep., National Renewable Energy Lab.(NREL), Golden, CO, USA, 2009.
- 625 Jonkman, J., Hayman, G., Jonkman, B., Damiani, R., and Murray, R.: AeroDyn v15 user's guide and theory manual, Tech. rep., National Renewable Energy Lab.(NREL), Golden, CO, USA, 2015.
- Jonkman, J., Annoni, J., Hayman, G., Jonkman, B., and Purkayastha, A.: Development of FAST.Farm: A new multi-physics engineering tool for wind-farm design and analysis, in: 35th Wind Energy Symposium, p. 0454, 2017.
- Jonkman, J., Doubrawa, P., Hamilton, N., Annoni, J., and Fleming, P.: Validation of FAST.Farm against large-eddy simulations, in: Journal of Physics: Conference Series, vol. 1037, p. 062005, IOP Publishing, 2018.
- 630 Kim, S., Shin, H., Joo, Y., and Kim, K.: A study of the wake effects on the wind characteristics and fatigue loads for the turbines in a wind farm, *Renewable Energy*, 74, 536–543, <https://doi.org/10.1016/j.renene.2014.08.054>, 2015.
- Kretschmer, M., Jonkman, J., Pettas, V., and Cheng, P.: FAST.Farm load validation for single wake situations at alpha ventus, *Wind Energy Science*, 6, 1247–1262, 2021.
- 635 Larsen, G., Madsen, H., Thomsen, K., and Larsen, T.: Wake meandering: a pragmatic approach, *Wind Energy*, 11, 377–395, <https://doi.org/10.1002/we.267>, 2008.
- Li, Z., Dong, G., and Yang, X.: Onset of wake meandering for a floating offshore wind turbine under side-to-side motion, *Journal of Fluid Mechanics*, 934, A29, 2022.
- Messmer, T., Hölling, M., and Peinke, J.: Enhanced recovery and non-linear dynamics in the wake of a model floating offshore wind turbine submitted to side-to-side and fore-aft motion, arXiv preprint arXiv:2305.12247, 2023.
- 640 Nunemaker, J. and Abbas, N.: pCrunch, <https://github.com/NREL/pCrunch>, 2023.
- Ocean Winds: WindFloat Atlantic, <https://www.oceanwinds.com/projects/windfloat-atlantic-project/>, 2023.
- Quon, E.: SAMWICH Box: A Python-based toolbox for Simulated And Measured Wake Identification and CHaracterization, <https://github.com/ewquon/waketracking>, 2017.
- 645 Quon, E., Doubrawa, P., and Debnath, M.: Comparison of rotor wake identification and characterization methods for the analysis of wake dynamics and evolution, in: Journal of Physics: Conference Series, vol. 1452, p. 012070, IOP Publishing, 2020.
- Rivera-Arreba, I., Eliassen, L., and Bachynski-Polić, E.: Effect of the vertical wake deflection on the response of a 12MW semisubmersible FWT, in: Journal of Physics: Conference Series, vol. 2626, p. 012057, IOP Publishing, 2023a.
- Rivera-Arreba, I., Li, Z., Yang, X., and Bachynski-Polić, E.: Validation of the dynamic wake meandering model against large eddy simulation for horizontal and vertical steering of wind turbine wakes, arXiv preprint arXiv:2308.01004, 2023b.
- 650 Rivera-Arreba, I., Wise, A., Eliassen, L., and Bachynski-Polić, E.: Effect of atmospheric stability on the dynamic wake meandering model applied to two 12MW floating wind turbines, *Wind Energy*, 26, 1235–1253, 2023c.
- Robertson, A., Jonkman, J., Masciola, M., Song, H., Goupee, A., Coulling, A., and Luan, C.: Definition of the semisubmersible floating system for phase II of OC4, Tech. rep., National Renewable Energy Lab.(NREL), Golden, CO, USA, 2014.
- 655 Rockel, S., Peinke, J., Hölling, M., and Cal, R.: Dynamic wake development of a floating wind turbine in free pitch motion subjected to turbulent inflow generated with an active grid, *Renewable Energy*, 112, 1–16, 2017.



- Sant, T., Bonnici, D., Farrugia, R., and Micallef, D.: Measurements and modelling of the power performance of a model floating wind turbine under controlled conditions, *Wind Energy*, 18, 811–834, 2015.
- Schliffke, B., Aubrun, S., and Conan, B.: Wind tunnel study of a “floating” wind turbine’s wake in an atmospheric boundary layer with imposed characteristic surge motion, in: *Journal of Physics: Conference Series*, vol. 1618, p. 062015, IOP Publishing, 2020.
- 660 Shaler, K., Jonkman, J., Barter, G. E., Kreeft, J. J., and Muller, J.: Loads assessment of a fixed-bottom offshore wind farm with wake steering, *Wind Energy*, 25, 1530–1554, <https://doi.org/10.1002/we.2756>, 2022.
- Thedin, R., Barter, G., Jonkman, J., Mudafort, R., Bay, C., Shaler, K., and Kreeft, J.: Load assessment of a wind farm considering negative and positive yaw misalignment for wake steering, *Wind Energy Science Discussions*, 2024, 1–26, 2024.
- 665 Thomsen, K. and Sørensen, P.: Fatigue loads for wind turbines operating in wakes, *Journal of Wind Engineering and Industrial Aerodynamics*, 80, 121–136, [https://doi.org/10.1016/S0167-6105\(98\)00200-4](https://doi.org/10.1016/S0167-6105(98)00200-4), 1999.
- WAMIT, I.: *WAMIT User Manual - Version 7.4*, Chestnut Hill, MA, USA, 2020.
- Wen, B., Tian, X., Dong, X., Peng, Z., and Zhang, W.: Influences of surge motion on the power and thrust characteristics of an offshore floating wind turbine, *Energy*, 141, 2054–2068, 2017.
- 670 Wen, B., Dong, X., Tian, X., Peng, Z., Zhang, W., and Wei, K.: The power performance of an offshore floating wind turbine in platform pitching motion, *Energy*, 154, 508–521, 2018.
- Wise, A. and Bachynski, E.: Wake meandering effects on floating wind turbines, *Wind Energy*, 23, 1266–1285, 2020.