

Convergence and efficiency of global bases using Proper Orthogonal Decomposition for capturing wind turbine wake aerodynamics

5 Juan Felipe Céspedes Moreno¹, Juan Pablo Murcia León¹, Søren Juhl Andersen²

¹Department of Wind and Energy Systems, Technical University of Denmark, Frederiksborgvej 399, Roskilde, 4000, Denmark

²Department of Wind and Energy Systems, Technical University of Denmark, Anker Engelunds Vej 1, Kgs. Lyngby, 2800, Denmark

Correspondence to: Juan Felipe Céspedes (jfc@dtu.dk)

10 **Abstract.** Wind turbine wake aerodynamics affect turbine production and loads, but are highly turbulent and therefore complex to model. Proper Orthogonal Decomposition (POD) has often been applied for reduced order models (ROMs), as POD yields an orthogonal basis optimal in terms of capturing the turbulent kinetic energy content. POD is typically used to understand flow physics and reconstruct a specific flow case. However, Andersen and Murcia Leon (2022) proposed a ROM for predicting wind turbine wake aerodynamics by applying POD on multiple flow cases with different governing parameters to derive a
15 global basis intended to represent all flows within the parameter space. This article evaluates the convergence and efficiency of global POD bases covering multiple cases of wind turbine wake aerodynamics in large wind farms. The analysis shows that the global POD bases have better performance across the parameter space than the optimal POD basis computed from a single dataset. The error associated with using a global basis across the parameter space of reconstructions decreases and converges as the dataset is expanded with more flow cases, and there is a low sensitivity as to which datasets to include. It is also shown
20 how this error is an order of magnitude smaller than the truncation error for 100 modes. Finally, the global basis has the advantage of providing consistent physical interpretability of the highly turbulent flow within wind farms.~~The Proper Orthogonal Decomposition (POD) can be applied by combining several datasets, i.e. using data obtained from simulations with different governing parameters. The resulting global POD basis is intended to represent all flows within the parameter space, and the convergence and efficiency of such global POD bases are evaluated here for the case of wind turbine wake~~
25 ~~aerodynamics in large wind farms. The analysis shows that the global POD bases have better performance across the parameter space than the optimal POD basis computed from a single dataset. The error associated with using a global basis across parameter space of reconstructions decreases and converges as more datasets are included, and there is a low sensitivity as to which datasets to include. It is also shown how this error is an order of magnitude smaller than the truncation error for 100 modes. Finally, the global basis applied to the highly turbulent flow within a wind farm has the advantage of providing~~
30 ~~consistent physical interpretability.~~

Keywords: Proper Orthogonal Decomposition, Global Basis, Reduced Order Modelling, Turbulence, Wind Turbine Wake Dynamics.

1 Introduction

The proper orthogonal decomposition (POD) is a classic data-driven method for decomposing fluctuations of turbulent flows into orthogonal modes, which provide an optimal linear decomposition in terms of the variance [Lumley (1967); Berkooz et al. (1993)]. POD has been applied on a vast range of ~~flow scenarios~~different flow configurations, and the POD modes are typically used for one of two main applications. One, the modes can provide a physical interpretation of dominant coherent structures in complex turbulent flow, e.g. [Sirovich (1987), George (1988), Neumann and Wengle (2004), Meyer et al. (2007)]. Two, a truncated set of the modes can be used to construct reduced order models (ROMs), e.g. [Smith et al. (2005), Noack et al. (2011), Semaan et al. (2016), Taira et al. (2017)].

However, an optimal reconstruction in terms of variance might not always be the most desirable basis for creating ROMs. Alternative bases can for instance be derived by changing the norm to optimize other quantities instead of variance e.g. enthalpy, enstrophy, and dissipation [Colonius et al. (2002), Lee and Dowell (2020), Olesen et al. (2023)]. Emphasis can also be on the spectral content by performing POD in the frequency domain using Spectral POD [Sieber et al. (2016)] or the related Dynamic Mode Decomposition [Schmid (2010)], which does not provide orthogonal bases. Furthermore, nonlinear bases can be formed using autoencoders, which constitute a nonlinear generalization of POD through an artificial neural network (ANN) [Hinton and Salakhutdinov (2006), Vinuesa and Brunton (2022)]. Autoencoders are specifically designed to reduce the number of degrees of freedom required to describe a data set but might lack physical interpretability.

Irrespective of the decomposition method, the resulting bases are typically applied to data from a single flow case, which corresponds to a single point in parameter space. A single flow case would in the present content correspond to the inflow to a particular wind turbine in a wind farm operating at a single C_T value [Andersen et al. (2014), Debnath et al. (2017), Bastine et al. (2018), Hamilton et al. (2018)]. ~~However-However, in cases of parametric studies,~~ efforts have been made to transition between different bases to cover different flow cases in parametric studies [Christensen. et al. (1999), Stankiewicz et al. (2017), Xiao et al. (2017)]. Conversely, recent developments [Andersen and Murcia Leon (2022), Fu et al. (2023), Nony et al. (2022), Buoso et al. (2022)] employ a single global basis constructed by applying POD on a combination of multiple flow cases. The global basis maintains the benefits of POD, namely orthogonality and physical interpretability [VerHulst and Meneveau (2014), Andersen et al. (2017), De Cillis et al (2021)]. Using a global basis for constructing generic ROMs enables consistent physical analysis across different flow conditions using the same basis, and therefore holds the potential for constructing more robust POD models [Bergmann et al. (2009)] including diverse forms of interpolation across parameter space to predict unseen flow cases.

~~In a previous work~~Previously, Andersen and Murcia Leon (2022) qualitatively compared the resulting global POD modes to local POD modes derived from individual flow cases, but the efficiency of these bases was not compared to POD modes derived

from individual flow cases. This article quantifies the efficiency of the global POD modes in reconstructing wind turbine wake aerodynamics compared to a local basis for a single flow case. However, the efficiency of the global modes was not quantified. Furthermore, a global POD basis is expected to converge as more flow cases are added. This article explores this aspect alongside the convergence of the global basis across the parameter space, which is expected in the POD formulation [Haasdonk (2013), Hesthaven et al. (2016)], but the selection of which flow cases to include to ensure fast convergence is uncertain. Here, the convergence of the global basis is investigated in accordance with previous studies and notions of how to select the datasets to create a global basis are also investigated in accordance to previous references [Haasdonk et al. (2011), Hesthaven et al. (2016), Quarteroni et al. (2016)]. The analysis uses a database of Large Eddy Simulations (LES) of wind turbine wake dynamics, which are particularly challenging as they are highly turbulent and include the vast range of turbulent scales in the atmosphere. Therefore, this work contributes by explicitly showcasing the advantages and characteristics of global bases in ROMs applied in a practical, yet complex scenario. Therefore, this work contributes by explicitly showcasing the advantages and characteristics of global basis in ROMs applied in a practical and complex scenario.

2 Methodology

2.1 Flow Solver and Turbine Modelling

The LES database is the same as used for creating the predictive and stochastic reduced order model of wind turbine wakes [Andersen and Murcia Leon (2022)], where the simulations were generated using the incompressible finite volume flow solver EllipSys3D [Michelsen (1992), Michelsen (1994), Sørensen (1995)]. A third-order QUICK scheme is used for the convective terms, and a second-order implicit method is used for time stepping. The pressure correction equation is solved with an improved version of the SIMPLEC algorithm [Shen et al. (2003)] and pressure decoupling is avoided using the Rhie-Chow interpolation technique. LES Large Eddy Simulations (LES) applies a spatial filter on the Navier–Stokes equations, where the smaller scales are modeled through a sub-grid scale (SGS) model to achieve turbulence closure. The Deardorff SGS model is used [Deardorff (1980)].

The turbines are modeled using the actuator disc (AD) method, which imposes body forces in the flow equations [Mikkelsen (2004)]. Initially, the velocities are passed from EllipSys3D to Flex5 [Øye (1996)], which computes the forces and deflections through a full aero-servo-elastic computation, and transfers these back to EllipSys3D [Sørensen et al. (2015), Hodgson et al. (2021)]. The turbines modeling does not include the effects of the nacelle or tower, but this only has a minor influence on the wake-generating thrust [Zhale and Sørensen (2008)].

2.2 Simulation Setup

The wind farm is simulated with 14 turbines aligned as shown in Fig.1. The computational domain is $192R \times 20R \times 20R$ in the streamwise, lateral, and vertical directions respectively. The grid is structured and has $3392 \times 192 \times 128 \approx 83 \times 10^6$ grid cells. The grid is equidistant from the inlet to the turbines and in the vicinity of the turbines, where it expands +4R on

each side of the turbine center, as well as $4R$ vertically. This equidistant region has a resolution of approximately 20 cells per blade radius, which is highly resolved for AD simulations [Hodgson et al. (2023)]. The grid is stretched towards the lateral, top, and outlet boundaries.

The turbines are separated by $12R$ in the streamwise direction, and $20R$ in the lateral direction. Cyclic boundary conditions are imposed on the lateral boundaries to mimic an infinitely wide wind farm. The modeled turbine is the NM80 turbine, which has a radius of $R=40.04\text{m}$, hub-height of $z_0=80\text{m}$, and rescaled rated wind speed of $U_{rated}=14\text{m/s}$ with a corresponding rated power of $P_{rated}=2.75\text{MW}$ [Aagaard Madsen et al. (2010)].

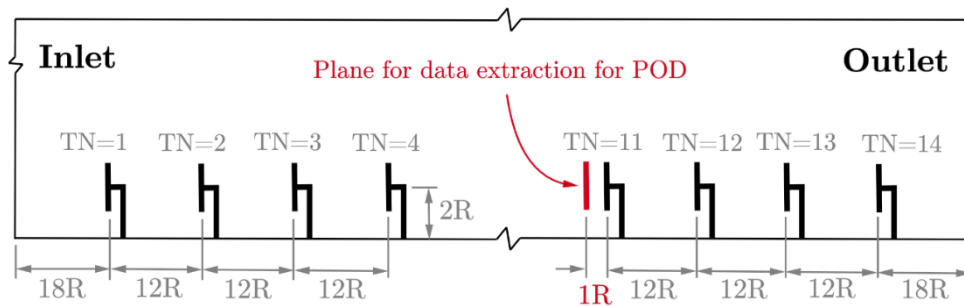


Figure 1: Simulation layout.

The neutral atmospheric boundary layer (ABL) inflow to the farm is modeled in a prior precursor simulation [Andersen and Murcia Leon (2022)]. The initial precursor simulation has a roughness of $z_0=0.05\text{m}$ and a friction velocity of $u_* = 0.4545\text{ m/s}$, which resulted in an average shear exponent of $\alpha = 0.14$. The rough-wall boundary layer can be rescaled to model different wind speeds [Castro (2007)].

The flow database ~~consists of vertical planes of inflow to is limited to the incoming flow at~~ each rotor, which captures the wake ~~aedynamicsrodynamics generated by the upstream wind turbine(s)~~. Therefore, the three velocity components are extracted in vertical planes of $2R \times 2R$ located one radius upstream of each turbine to reduce ~~the turbine-specific influence of induction [Troldborg and Meyer Fosting (2017)]the influence of turbine induction~~, see Fig. 1. This corresponds to a grid of 39×42 points in the y - z plane. ~~The time step is 0.1 seconds for simulations with $U = 8, 12, 15\text{ m/s}$, and 0.05 seconds for $U = 20\text{ m/s}$.~~ The data is extracted every 0.1 seconds during $2^{17} \times 10^{17}$ time-steps, which is approximately 3.64 hours of simulated flow.

115 2.3 Parameter space and flow characteristics

The database is designed to cover the majority of the operational range for this particular wind farm, and therefore the parameter space governing the turbulent wake flow. The most important parameter for wind turbine wakes is the thrust coefficient C_T [van der Laan et al. (2020)]:

$$C_T = \frac{T}{\frac{1}{2}\rho AU^2}, \quad (1)$$

120 Where T is the turbine's thrust, ρ is the air's density, A is the rotor's area, and U is a representative velocity, typically the mean
freestream axial velocity is the velocity. This coefficient is a relative measure of the force exerted by the turbine with respect
to the momentum of the incoming wind. For low wind speeds, the turbine extracts as much energy as possible, and the thrust
coefficient is typically around 0.8, which is considered high. Significantly higher values can result in flow reversal as the
turbine enters propeller mode [Sørensen et al. (1998)]. For high wind speeds, the turbine typically pitches its blades to reduce
125 power extraction and thrust force.

Four simulations were performed for different average incoming wind speeds, which cover a significant range of operating
thrust coefficients. A second parameter inherently present in a wind farm is the turbine number (TN). As the flow enters the
wind farm, the incoming wind for the first turbine is ~~atmospheric undisturbed~~, but the second turbine operates in the wake of
the first turbine. Further inside the wind farm, multiple wakes can be present concurrently. Wakes have a significant impact
130 on the performance of wind farms, as the wind speed is lower and the turbulent intensity is higher causing a reduction in power
production and increased fatigue loads on turbines operating in the wake [Vermeer et al. (2003); Porté-Agel et al. (2020)].

The parameter space covered by the database is visualized in Fig. 2. ~~It consists of two parameters: turbine number (2-14) of
turbines operating in wake conditions, and four wind speeds at hub height for the front turbine (8, 12, 15, and 20 m/s).
Combined, these parameters are associated with a time-averaged C_T of the upstream wind turbine, which generates the wake,
which shows the time-averaged C_T of the wake generating (i.e. upstream) turbine for the four different wind speeds (8 m/s, 12
135 m/s, 15 m/s, 20 m/s) as a function of the turbine number (2-14) for the turbines operating in the wake. C_T is- higher for low
wind speeds until the turbine starts pitching, and it is approximately constant at 0.8 and 0.3 for the cases of $U = 8$ m/s and U
 $= 20$ m/s, respectively. However, for $U = 12-15$ m/s there is a gradual transition in C_T from the first turbine to the turbines
further into the farm, where the flow has achieved a balance between extracted power and wake recovery approximately
140 constant for all turbines at 0.8 and 0.3 for $U = 8$ m/s and $U = 20$ m/s, respectively. Effectively, the operation of the individual
turbines does not change despite the presence of the wake, which in the latter case is minimal due to the low C_T . However, for
 $U = 12-15$ m/s there is a gradual transition in C_T from the first turbines to the turbines further into the farm, where the operating
condition have converged as there is a balance between extracted power and wake recovery [Calaf et al. (2010)]. The fully-
developed or “infinite” wind farm is typically reached after the first 5-6 wind turbines [Andersen et al. (2020)].~~

145 ~~In total~~, Figure 2 shows 52 different combinations ~~for of~~ the four wind speeds (U) and 13 turbine numbers (TN). ~~Where~~ ~~Each~~
combination corresponds to an ~~inflow~~ data set of inflow to a given turbine, $\mathbf{V}(y, z, t)$.

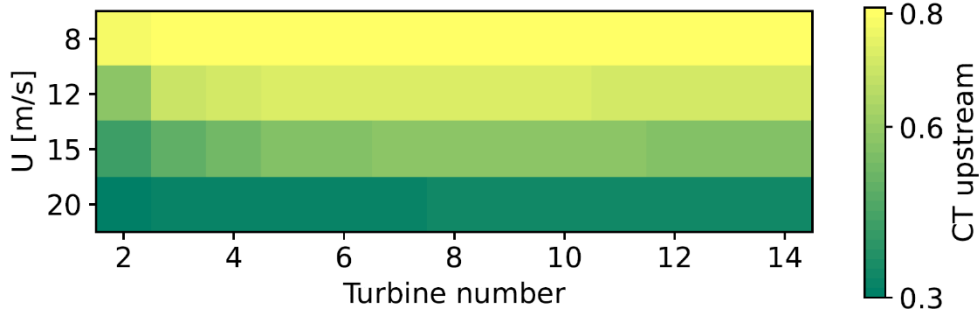


Figure 2: Parameter space from the Large Eddy Simulations. C_T is shown for the upstream turbine for each mean wind speed in the simulation inlet and turbine number.

150

2.4 Proper Orthogonal Decomposition

Proper Orthogonal Decomposition (POD) is a classic technique for dynamic flow analysis, which decomposes a turbulent flow into modes of spatial variability. These modes are orthogonal and, given the norm used to perform the decomposition, optimal in terms of capturing the variance of the fluctuating flow [Lumley (1967); Berkooz et al. (1993)].

155 The velocity field (\mathbf{V}) is described as the sum of the mean flow ($\bar{\mathbf{V}}$) and the fluctuating flow (\mathbf{V}'), as in Equation 2.

$$\mathbf{V}(y, z, t) = \bar{\mathbf{V}}(y, z) + \mathbf{V}'(y, z, t), \quad (2)$$

POD is then applied to the three fluctuating velocity components of \mathbf{V}' (u' , v' and w'), where each time step is represented as a column vector, and N_t time steps are aggregated into a matrix $\mathbf{M} = [\mathbf{V}'_1, \dots, \mathbf{V}'_{N_t}]$. The auto-covariance of \mathbf{M} is computed: $\mathbf{R} = \mathbf{M}^T \mathbf{M}$, and the eigenvalue problem $\mathbf{R}\mathbf{G} = \mathbf{G}\mathbf{\Lambda}$ is solved, where $\mathbf{\Lambda}$ is a matrix of real and positive eigenvalues and \mathbf{G} is a matrix of orthonormal eigenvectors $\mathbf{G} = [\mathbf{g}_1, \dots, \mathbf{g}_{N_t-1}]$. The dimensionality has been reduced by 1 due to the extraction of the mean flow; and the orthonormality of the global modes is given using the standard inner product, $\langle \mathbf{a}; \mathbf{b} \rangle = a_i b_i$, across all flow components: $\langle \mathbf{g}_i; \mathbf{g}_j \rangle = \delta_{ij}$. Finally, the modes are organized according to the eigenvalue decay i.e., in descending order according to variance, representing the turbulent kinetic energy contribution of each mode. Collectively, all modes form a new set of basis functions spanning the data set.

165 The original flow can be reconstructed by projecting the flow into each mode with a standard inner product, which results in its contribution as a function of time (ϕ_i). Subsequently, as shown in equation 3, the modes multiplied by their contribution over time can be summed to reconstruct the flow.

$$\mathbf{V}'(y, z, t) \approx \sum_{i=0}^K \mathbf{g}_i(y, z) \phi_i(t), \quad (3)$$

An approximated reconstruction of the flow can be obtained by only including a limited number of modes ($K \leq N_{t-1}$).

170 2.5 Global POD basis

POD is traditionally applied on an individual flow case, i.e. on a “local” data set in the parameter space. Therefore, applying POD on a single data set is referred to as a *local POD basis* in the present work. The local basis contains the modes, which optimally represent the variance of that particular data set. Conversely, a *global POD basis* is formed by including multiple data sets in the decomposition [Andersen and Murcia Leon (2022)].

175 The global basis can be computed by including q different datasets, and adding N_T snapshots from each flow data set to the matrix \mathbf{M} before applying POD:

$$\mathbf{M} = [\mathbf{V}'_{1,1}, \dots, \mathbf{V}'_{1,N_T}, \dots, \mathbf{V}'_{q,1}, \dots, \mathbf{V}'_{q,N_T}], \quad (4)$$

Consequently, the global POD basis is sub-optimal at capturing the variance for a particular data set, but it is expected to provide a better representation across the entire parameter space.

180 2.6 Convergence of global POD basis

The expected sub-optimality of a global POD basis raises a number of central questions on the effectiveness relative to a local POD basis and on the required number and which datasets to include in the construction of a global POD basis.

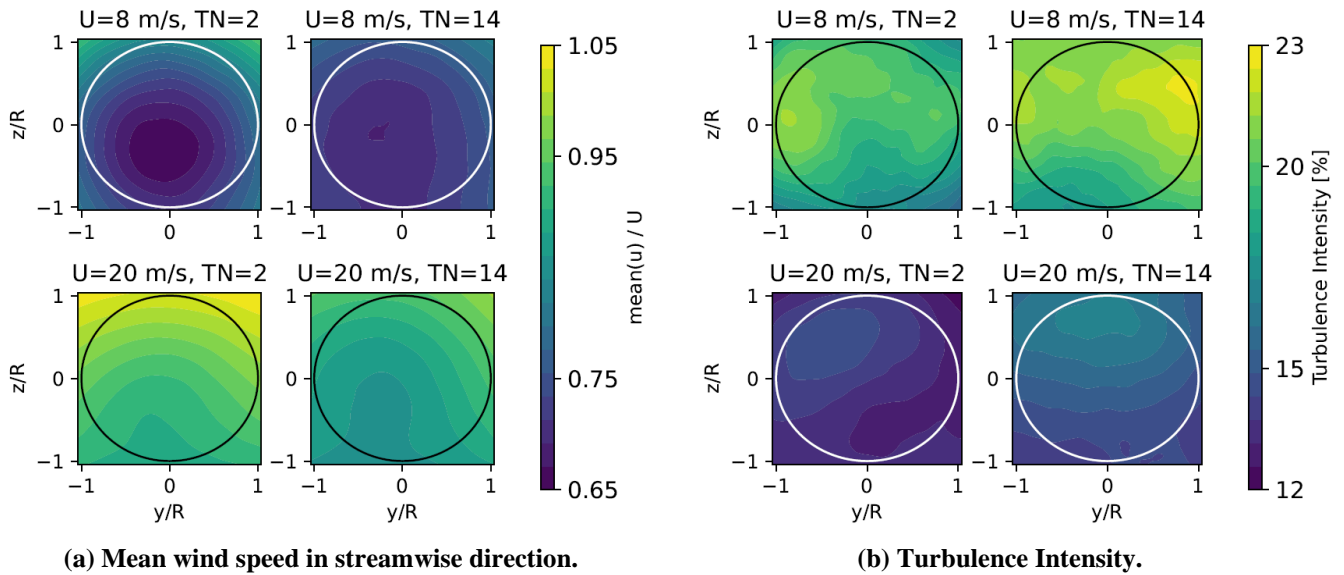
Here, the parameter space contains 52 datasets. This means that for any number of datasets k composing a global base, there are $\binom{52}{k}$ possible global basis, so there are $\sum_{k=1}^{52} \binom{52}{k} = 4.5 \times 10^{15}$ possible combinations to generate a global basis, which

185 effectively excludes the option of evaluating all of them. Consequently, the global POD bases are constructed in an iterative manner. ~~First, a POD basis is based on a single dataset (one flow case in the parameter space), and its performance is, where the performance of a global basis is~~ evaluated across all ~~datasets-flow cases in-of~~ the parameter space. ~~The-Secondly, a new flow case is added to form a new global basis. The new global basis is again evaluated across all flow cases before a new dataset can be added. In each iteration, the dataset with the worst performance is~~ added to the decomposition ~~is the one with the worst performance to maximize the reduction of the overall error~~ ~~to gradually reduce the overall error and a new global POD basis is computed~~. The iterative procedure means that only 52 different combinations exist, as each data set can be chosen as the initial starting point.

3. Results

3.1 Flow cases

195 The wake flows change considerably across the parameter space. Figure 3 shows the normalized average streamwise velocity and the turbulence intensity for the four corners of parameter space (Fig. 2).



(a) Mean wind speed in streamwise direction.

(b) Turbulence Intensity.

Figure 3: Mean streamwise wind speed and turbulence intensity of the flows in the four corners of the parameter space.

200 The circle on each plot represents the rotor.

Figure 3a shows a significantly larger deficit and a more circular wake when C_T is high ($U=8$ m/s), and a less significant wake and more dominant shear profile from the atmospheric boundary layer when C_T is low ($U=20$ m/s). Furthermore, the spatial gradients are less pronounced late in the wind farm ($TN=14$), which is a consequence of the increased mixing due to the presence of multiple wakes. Figure 3b shows the streamwise turbulence intensity ($\sigma(u')/U$), which ranges from 12% up to 23% with the largest values in flows with a high thrust coefficient. The highest turbulence intensity is located in the upper half of the domain, where more momentum is exchanged between the wake and the surrounding atmospheric flow.

210 Figure 4 shows the streamwise velocity spectra taken at the rotor center for the four corners of the parameter space. This exemplifies how turbulent dynamics depend on both the thrust coefficient and turbine number. The total turbulent kinetic energy is larger for the high wind speed, as expected. The spectraspectrums tend to shift at the low frequencies, particularly for high C_T , as the largest turbulent length scales are broken down as they move through the wind farm [Andersen et al. (2017)].

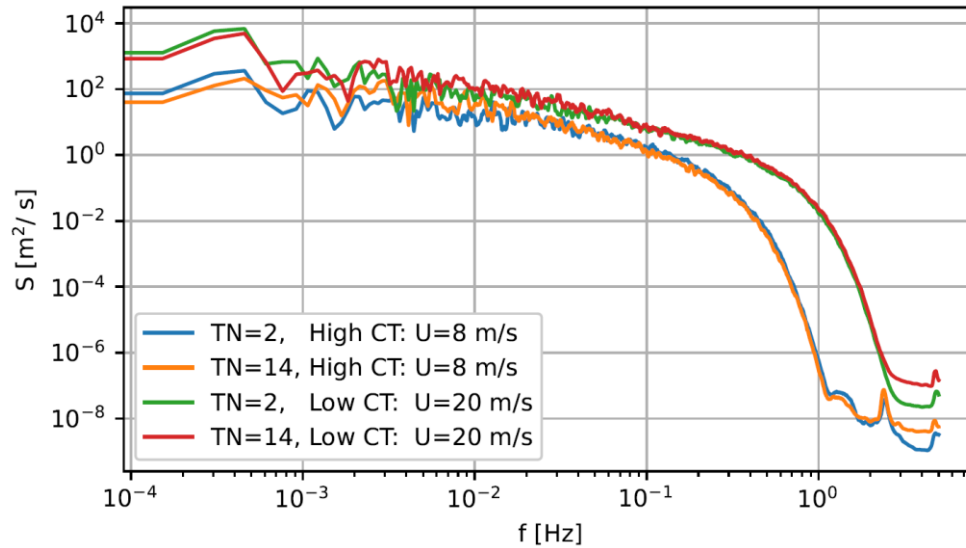


Figure 4: Fourier spectra of u' at hub height for the four corners of the parameter space.

3.2 Global modes

215 POD is applied to compute the local and global POD bases. Figure 5 shows the first eight local modes calculated with one dataset from the parameter space, 1P. The figure also shows eight global POD modes derived using 9 datasets, 9P. The local and global modes are clearly similar, and ~~are therefore capable of capturing the same coherent structures. there is a general trend that the turbulent structures diminish in size for higher modes. However, the ordering of individual modes might change as they cover an increasingly large parameter space these are not the first eight global POD modes, but rather the eight modes most qualitatively comparable to the first eight local POD modes.~~ This is an important point of the global basis. ~~The ordering of the individual modes might change.~~ For instance, global mode 9P g_7 is not shown as it qualitatively corresponds to local mode 1P g_9 , while global modes 9P g_7 and 9P g_8 are more important over the parameter space. As shown by Andersen and Murcia Leon (2023), this means that the contribution of variance captured by each mode might change over the parameter space. ~~The analysis is kept qualitative here, but a more quantitative comparison of the re-ordering and similarity of modes from different bases has been proposed by Olesen et al. (2024).~~

220

225

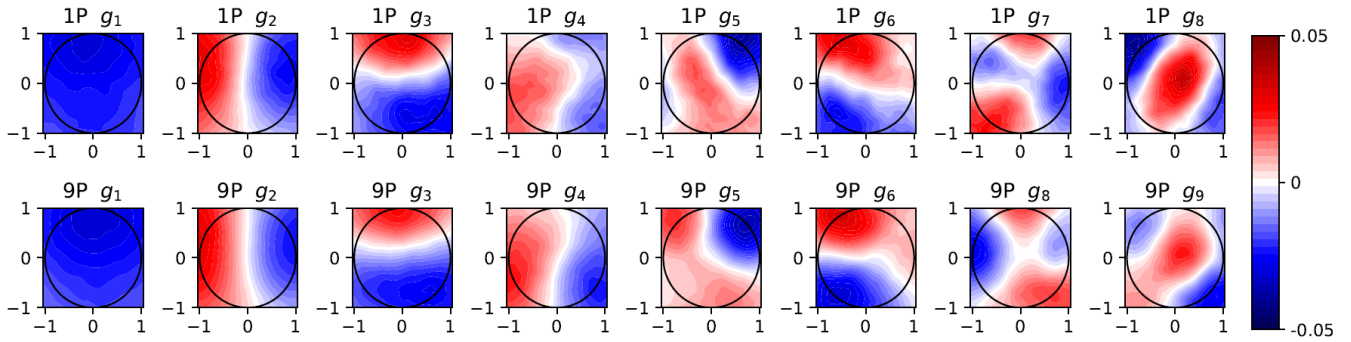
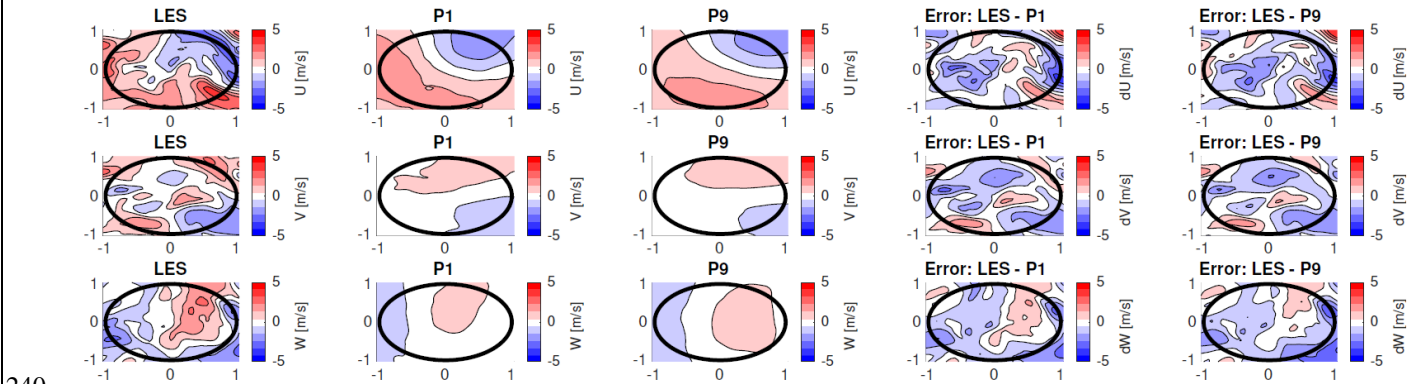


Figure 5: Streamwise component of the first modes using one and nine points from parameter space, 1P and 9P respectively. The circle on each mode represents the turbine rotor.

230 Although the local and global modes are qualitatively comparable, the global basis must be both efficient and representative of the entire parameter space. Figure 6 shows instantaneous flow fields for all velocity fluctuations U' , V' , and W' for LES and reconstructions using the first eight modes of P1 and P9 for flow case $U = 20$ m/s and the 5th wind turbine, corresponding to the bases visualized in Figure 5. The filtering effect of POD is clearly seen in the reconstructions for both P1 and P9 and for all velocity components as the details of the LES are not reconstructed with only eight modes. However, the overall structures of the reconstructed flow fields are comparable, particularly for the streamwise fluctuations U' . The region of positive fluctuations in V' is larger in P1, while P9 has a larger region in positive fluctuations of W' . The figure also shows the difference in the instantaneous fluctuations from LES and the two reconstructions. The error fields are very comparable between the two reconstructions with only minor differences and it is difficult to qualitatively assess that P1 is significantly better than P9.

235



240 Figure 6: Flow fields of LES, reconstruction using P1 and P9 as well as error computed as the difference between LES and the reconstructed flows using 8 modes for the 5th turbine and $U = 20$ m/s. The top row shows streamwise velocity fluctuations U' , the center row shows lateral velocity fluctuations V' , and the bottom row shows vertical velocity fluctuations W' .

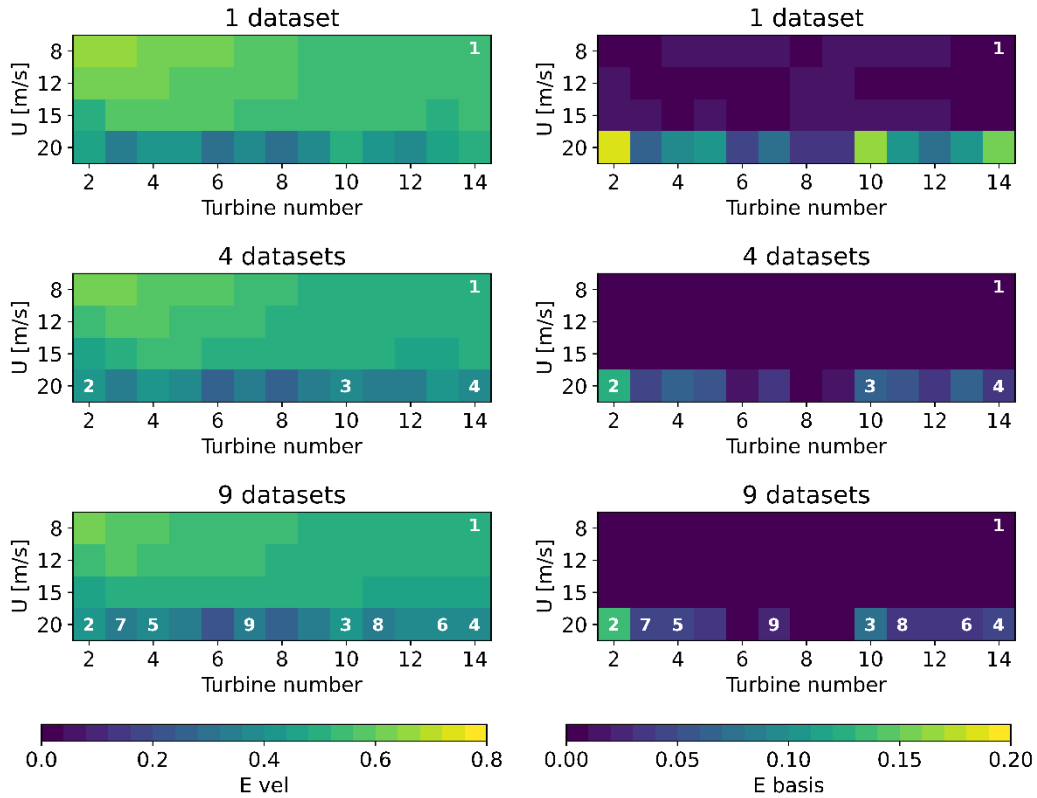
245 **3.3 Global modes convergence**

~~In order to quantify the efficiency, a given Although qualitatively comparable, the global basis must be both efficient and representative of the entire parameter space.~~ A basis is evaluated against the full LES flow using a velocity error E_{vel} defined in equations 5 and 6. The metric takes, for every velocity component, the average in space (y,z) of the ratio between the root mean square error of the velocity field and its standard deviation over time. The error is normalized by the standard deviation on
 250 because it is a direct measure of the variance in the original flow. Subsequently, E_{vel} corresponds to the norm of the errors from the three velocity components. This results in a single value for each point in the parameter space representing the total error of the reconstruction with respect to the original flow.

The velocity error is shown in Figure 76a, where the top left figure corresponds to the local basis using one dataset of $U = 8\text{m/s}$ and $TN = 14$, indicated by the white number. This basis is evaluated across the entire parameter space using 100 modes, i.e. the basis derived from the one dataset is applied on all flows. It reveals that the velocity error is largest at the first turbines for $U = 8\text{m/s}$. However, the ~~error of the reconstructed flow compared to the LES velocity error~~ is low for the high wind speed. ~~Hence, the global basis provides efficient reconstruction for significantly different flow cases., which indicates an efficient reconstruction of very different flows.~~

$$E_{u'} = \text{mean}_{y,z} \left[\frac{\sqrt{\text{mean}_t [u'_{LES}(y,z,t) - u'_{POD}(y,z,t)]^2}}{\text{std}_t [u'_{LES}(y,z,t)]} \right], \quad (5)$$

260 $E_{vel} = \sqrt{E_{u'}^2 + E_{v'}^2 + E_{w'}^2}, \quad (6)$



(a) Velocity error fields in parameter space (b) Basis error fields in parameter space

Figure 76: Velocity error (E_{vel}) and basis error (E_{basis}) using 100 modes across the parameter space for basis including 1, 4, and 9 datasets.

265

The velocity error (E_{vel}) corresponds to the total error with respect to LES, but this has two components: a truncation error due to the number of modes included, and a basis error E_{basis} due to the use of a global basis, which is non-optimal locally. The basis error arises because *the global basis is sub-optimal compared to the local basis, which in principle is a better basis is* capable of reconstructing a larger portion of the flow with the same number of modes. Therefore, in order to isolate and quantify the basis error, the velocity error from the local POD bases ($E_{vel-local\ POD}$) is subtracted from E_{vel} , as shown in equation 7.

270

$$E_{basis} = E_{vel} - E_{vel-local\ POD}, \quad (7)$$

The basis error is shown in Fig. 76b. Contrarily to the velocity error E_{vel} , the largest basis errors correspond to the low C_T . Hence, the dataset for $U = 20$ m/s and $TN = 2$ with the largest basis error is added to improve the global basis. The same error

275 estimates are computed with the updated global basis, and the procedure is iterated to reduce the overall error of the global basis.

Figure 76 shows the evolution of errors using four and nine datasets. The white numbers indicate the order of adding the different datasets to the global basis. The average errors are clearly reduced when more datasets are included. Additionally, the largest basis errors remain at low C_T , and the difference of including one or four datasets is significantly larger than using 280 four or nine datasets, which suggests convergence of the global basis.

Figure 76 uses $U=8$ m/s and $TN=14$ as initial dataset for the iterative procedure. Table 1 shows five different starting points. The first four initial datasets correspond to the four corners of parameter space, and the fifth is a point in the middle of the domain.

Coordinates	Name				
	A	B	C	D	E
U [m/s]	8	20	8	20	15
TN	2	2	14	14	5

Table 1: Initial datasets from parameter space.

285

Figure 87 shows the evolution of the average velocity error (E_{vel}) across parameter space as a function of the number of datasets in the global basis for the five different initial conditions. As seen, all five initial conditions (A-E) yield the same trend of decreasing the mean velocity error as more datasets are included. On average the mean velocity error decreases 6% from one to nine datasets. Effectively, the choice of the initial dataset increasingly loses importance as it is noted how the influence of the starting point decreases as more datasets are included. For instance, with one dataset, the relative difference between the best and worst performing global basis is 3.9%, but with nine datasets it is reduced to 0.4%. Furthermore, after including three 290 datasets, the iterations starting at points B and D (those which started at $U=20$ m/s) contain the same datasets, which means that from that point they yield the same results.

The examined bases A-E include 512 snapshots per dataset and the flow reconstruction was truncated at 100 modes. The horizontal lines in Fig. 87 indicate the average error when each flow in the parameter space is reconstructed with 100 modes of the corresponding local basis, computed using 512, 1024, and 2048 snapshots respectively. The performance of these bases depends on the number of snapshots before achieving convergence, and the number of independent snapshots is limited, at 295 around 2048, by the span of a single dataset. Independence is here based on snapshots being separated according to the integral length scales. On the other hand, a global basis can include more data because it is extracted from different datasets, i.e. 300 different flows, which makes the snapshots independent.

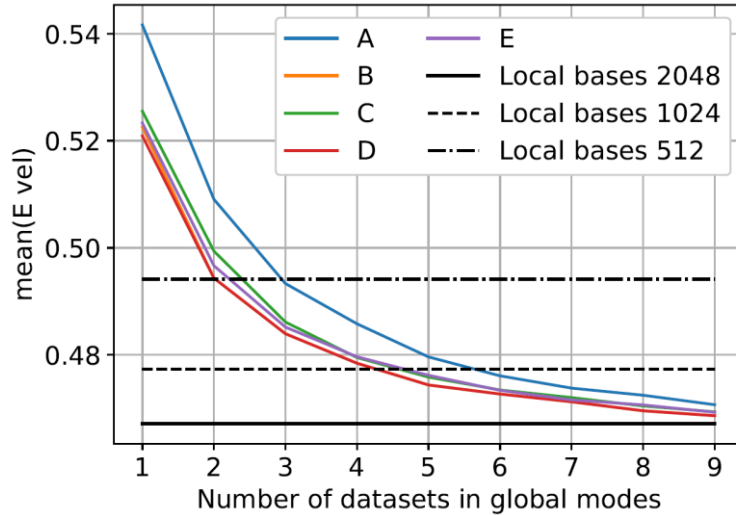


Figure 87: Mean error E_{vel} across the parameter space using 100 modes vs the number of datasets included in the global basis.

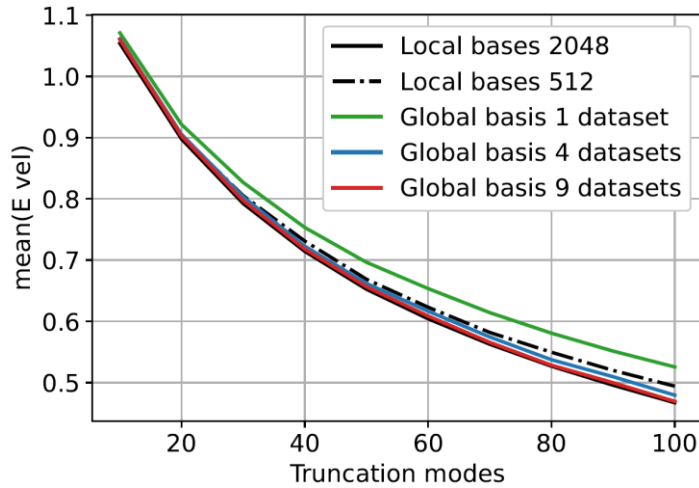
305 Consequently, global bases can be directly compared to local bases when computed with the same amount of data. Table 2
 compares the values of the horizontal lines in Fig. 87 (local bases error) with the average result from the curves A-E at the
 corresponding number of snapshots. As more datasets are included, the performance of the global bases gets closer to the
 theoretical minimum error of the local bases, where four datasets correspond to a relative difference in the error of 2.8%
 truncated at 100 modes.

310

Total number of snapshots	Local bases error	Global bases		Relative error difference
		Number of datasets	Average error	
512	0.494	1	0.527	6.7%
1024	0.477	2	0.499	4.6%
2048	0.467	4	0.480	2.8%

Table 2: Mean velocity error comparison between local bases and global bases (average of curves A-E) with the same total number of snapshots using 100 modes.

315 For the dependence of the number of truncation modes, Fig. 98 shows the velocity error for two local and three global bases
 truncating at different numbers of modes. Overall, the error decreases as more modes are included. Here, it is also possible to
 compare the truncation error to the basis error. The basis error is approximately one order of magnitude smaller than the
 truncation error. For instance, using 100 modes, the error of the global basis using 1 dataset is 0.523, and the error of the best
 bases, i.e. local bases 2048, is 0.469, which is a relative difference of approximately 10%.



320 **Figure 98:** Mean error E_{vel} across the parameter space vs number of truncation modes. The global bases shown correspond to the starting point C from table 1.

It is noteworthy, especially for a global basis with a low number of datasets, that the basis error increases as more modes are included for the number of modes plotted. This is attributed to the fact that each additional mode from the optimal basis adds more information to the flow than a mode from the sub-optimal base. However, any of these bases are capable of completely reconstructing the flow if all modes are included. Therefore, it is expected that as more modes are included, the optimal bases start to saturate, while the sub-optimal bases eventually will catch up and the basis error gap will reduce.

3.4 Case study with stochasticity

330 The physical and statistical implications of employing a global basis are investigated- using the stochastic engine PS-ROM by applying it to the LES case of $U = 12\text{m/s}$, where the turbines have an average $C_T = 0.71$. The chosen global basis is generated based on four datasets shown in Fig. 76, which yield a basis error of 2.8%, see Table 2. Furthermore, the The global basis is tested on the unseen flow case of $U = 12\text{ m/s}$, i.e. the employed global basis does not contain information from this flow scenario.

335 The inherent stochastic variability is assessed by generating $N = 30$ stochastic realizations and cross-comparing all realizations against themselves for a single flow case. This yields a total of $\binom{N}{2} = 435$ stochastic flow realizations. The analysis focuses on spectral statistics by utilizing the stochastic engine of PS ROM Andersen and Murcia Leon (2022), but does not include the predictive part, i.e. the actual projected spectrums are used, similar to Andersen and Murcia Leon (2023). In all cases, the spectrum analyzed is of the streamwise velocity at the rotor's center. Two different spectra will be compared using the spectral error metric shown in equation 8:

340

A general spectral error metric E_S of two spectrums is defined in equation 8:

$$E_{S-i,j} \equiv \frac{\int (S_i - S_j) df}{\int S_j df}, \quad (8)$$

where E_S stands for error in the spectra, S_i and S_j are the two spectra-spectrums to compare. \hat{S}_i is S_i filtered with a rolling mean using an averaging window varying logarithmically in size to smooth out higher frequencies.

345 The spectral error is utilized in two ways, where the analysis is shown for the streamwise velocity at hub height.
First, the variability of the 30 stochastic realizations is estimated to provide stochastic error distributions, as
The inherent stochastic variability is assessed by generating N=30 stochastic realizations and cross-comparing all realizations against
themselves for a single flow case. This yields a total of $\left(\frac{N}{2}\right) = 435$ spectral error samples. The distributions of stochastic
errors are shown in Fig. 10 for each turbine⁹. The red distributions are all centered around zero as the spectral error here
350 measures and show the stochastic variability of the 30 realizations relative to themselves, *i.e.* how much can a single realization of a constructed flow scenario vary relative to numerous realizations of the same flow. The distributions tend to narrow further into the wind farm, which indicates how the deep farm flows become increasingly self-organized and governed by the wakes [Andersen et al. (2017)].

This Second, the development can also be examined by comparing the spectral error between different flows, *i.e.* comparing
355 30 stochastic flow realizations at each turbine against the inflow to a specific turbine. Here, the last turbine (TN=14) is chosen to represent the fully-developed wind farm. The spectral error given by equation 8 is also used for this comparison, which yields $N^2 = 900$ error samples if since both flow cases have N=30 stochastic realizations. The corresponding errors are shown as green distributions in Fig. 10⁹. The distributions for the first turbines are significantly offset with a negative error, but initially narrower than the stochastic distributions in red. Eventually, the green distributions gradually become centered around
360 zero. Hence, the distributions of the stochastic spectral error and the spectral error relative to the 14th turbine can be compared directly to determine if there is a statistical difference between inflow to a given turbine relative to the last turbine. If the error distributions are reflections of each other, it implies that there is no statistical difference between the velocity spectra at the center of the domain between the turbine number in question and turbine number 14. This is particularly useful when trying to determine if the flow dynamics have reached the fully-developed wind farm conditions, where the statistical distributions no
365 longer change as the turbine number increases [Andersen et al. (2015)]. This is the case from approximately TN=9 forwards.

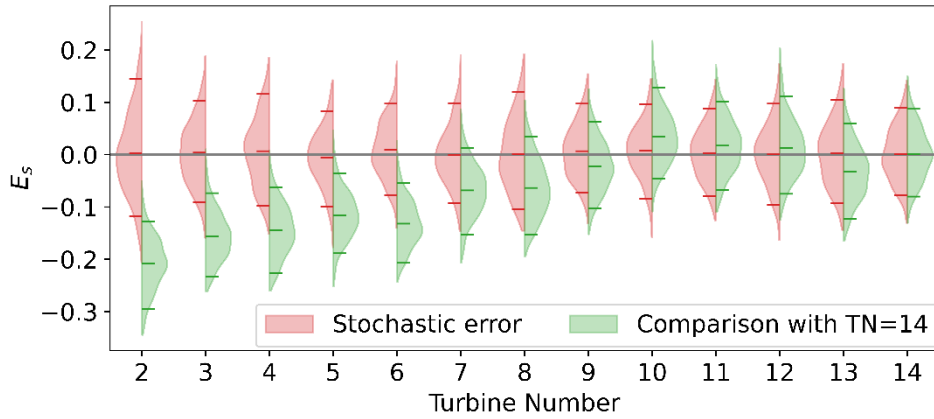
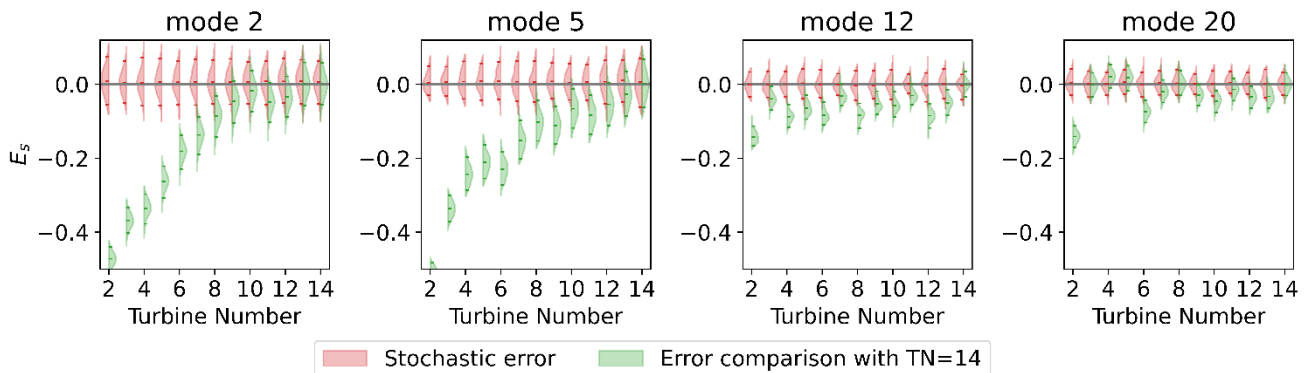


Figure 109: Distributions of spectral errors for the streamwise velocity at the rotor's center related to the stochasticity and relative to turbine number 14 through the wind farm using 30 stochastic realizations and 100 global POD modes for the simulation case $U=12$ m/s.

370

The ~~results from Fig. 9 are based on the comparison of streamwise velocity spectra at the rotor's center, but the~~ contribution of individual modes to the different flow cases can also be compared. Figure 110 shows similar spectral error distributions for global modes 2, 5, 12, and 20. Modes 2 and 5 show a gradual evolution reminiscing of Fig. 109, where the distributions gradually become increasingly similar. Contrarily, higher modes, such as 12 and 20, present a more scattered behavior with lower errors and mean values varying between positive and negative for $TN > 2$. This suggests that the transition to a deep wind farm state is primarily dictated by changes in the first global modes, which are associated with the largest turbulent scales. This trend corroborates the findings of Andersen and Murcia Leon (2023), where it was clearly shown how different global modes are actuated for different locations in the wind farm to capture different flow scenarios.

375



380

Figure 110: Distributions of spectral errors for four modes related to the stochasticity and relative to turbine number 14 through the wind farm using 30 stochastic realizations for the simulation case $U= 12$ m/s.

4 Discussion

Employing a global POD basis allows the use of the same modes for an entire parameter space but introduces the basis error
385 in the flow reconstructions (equation 7). The basis error emerges because the global basis is not as efficient at reconstructing
a particular flow as the local POD basis. However, it was shown that this error is reduced as more datasets are included ~~in~~
the global basis, and it is approximately one order of magnitude smaller than the truncation error for 100 modes.

The convergence of the global POD basis as a function of the number of datasets has a parallel with the convergence of the
local POD basis. A local POD basis converges when enough snapshots of the flow are included, so it contains information
390 about all the dynamics that occur in the flow [Hekmati et al. (2011)]. Consequently, it is an optimal basis in terms of variance,
and including more snapshots would not improve its performance. Similarly, for the global POD basis, as more datasets are
added, more information on the dynamics of the flows across parameter space is included. On the limit, when sufficient
information covering the parameter space has been supplied, including additional datasets with flow dynamics that have
already been covered will not improve the performance of the basis.

395 The inclusion of more datasets in the global ~~modes-basis~~ implied adding more data in total, as the number of snapshots per
dataset was kept constant. ~~An alternative would be A different approach is~~ to keep the amount of snapshots constant, and hence
include fewer snapshots per dataset; which would reduce the time to compute the modes that scales quadratically with the
number of snapshots. This is an unexplored scenario, but it is speculated that it would only be useful as long as there are
enough snapshots per dataset to generate an acceptable local POD basis with them, which would imply that there is enough
400 information per dataset to capture its dynamics.

The systematic process of including addition datasets is focussed on minimizing the basis error (equation 7) with respect to
the local bases' performance. The iterative procedure particularly identifies adding more datasets with low C_T . However,
additional datasets could be identified using alternative metric, e.g. the velocity error, which would prioritize adding datasets
of low turbine numbers and high C_T . Applying such alternative metrics, or ~~simply selecting datasets arbitrarily even including~~
405 ~~arbitrary datasets scattered~~ in the parameter space, also results in a reduction of the error as the number of datasets increases.
~~and therefore the global basis will eventually converge on multiple error metrics. However,~~

~~Furthermore,~~ it might be impractical to perform a detailed and systematic convergence study of the global basis for all
applications. ~~However~~ Yet, the present analysis ~~shows how global bases are also shows how the global basis is~~ relatively
insensitive to which datasets are used. It is therefore generally recommended to ~~use select multiple~~ datasets, which represent
410 various key flow phenomena. ~~Nevertheless, selecting key~~ Selection of datasets apriori would typically require domain
knowledge to identify key scenarios ~~to model with different physics.~~

~~Here, the global bases are used to model and analyze highly turbulent wind turbine wakes, but the use of global bases is
expected to be generally applicable. The present work expands the parameter space to cover two dimensions compared to the
single parameter in Andersen and Murcia Leon (2022), and there are no principal limits to the number of dimensions. However,
415 it is speculated that if the same set of modes is used in an extremely large parameter space, their efficiency becomes~~

considerably lower than the local POD modes at a given point in parameter space, and more modes would be required for the flow generation.

420 ~~Finally~~Furthermore, the case study highlights a number of benefits of employing a global basis. The global basis enables detailed and quantifiable physical interpretation of how the flow changes within the parameter space, as also seen in Andersen and Murcia Leon (2023), where the modal statistics of a global POD basis applied on a full wind farm clearly reveal three main flow regimes of atmospheric inflow, single wake and multiple wakes. The expansion of the parameter space reveals new insights compared to Andersen and Murcia Leon (2022). For instance, it is clearly seen how the spectral error distributions converge further into the wind farm indicating when fully-developed wind farm flow conditions are achieved dynamically and how this is linked to the first few modes. The method also enables modelers to estimate both the impact and uncertainty of
425 different realizations as well as different modes when generating synthetic turbulent flows. Additionally, the analysis ~~also~~ reveals how wind turbine wakes are relatively coherent flows, which can be covered by approximately 100 modes. Although, the consistently larger basis error for $U=20\text{m/s}$ also highlights how more modes are required to reduce the errors for ~~more~~ undisturbed atmospheric flows, where the influence of the turbines is negligible.

430 Finally, the global bases are used to model and analyze highly turbulent wind turbine wakes and the present work expands the parameter space to cover two dimensions compared to the single parameter in Andersen and Murcia Leon (2022). In principle, there are no limits to the number of dimensions. However, it is speculated that the efficiency of global bases will significantly decrease if the parameter space covers multiple dimensions with very different flow cases. If so, more modes would be required for the flow generation. However, the efficiency and convergence of the linear global POD bases also gives promises that it is possible to utilize nonlinear dimensional reduction techniques, such as autoencoders, to increase efficiency further, i.e. reduce
435 the number of modes required. Therefore, global bases are expected to be generally applicable for dimensional reduction within fluid dynamics.

5. Conclusions

440 Global POD bases are shown to provide an efficient basis to capture wind turbine wake aerodynamics for a parameter space covering all wake-affected turbines during different operating conditions. ~~represent an entire parameter space. This allows direct comparisons of the role of each mode in different flows, which facilitates dynamic analysis of the different flow cases throughout the parameter space.~~

The performance of the global basis has a basis error with respect to the local POD basis. But ~~it~~ the error is one order of magnitude lower than the truncation error, so it could be mitigated by adding a few additional modes. And most importantly,
445 ~~it~~ the error is significantly reduced and exhibits convergence towards the local POD basis as more datasets are included in the global basis.

The efficiency of global bases is shown to be rather insensitive to the selection of datasets to include ~~is not necessarily crucial for producing an efficient global basis~~, especially when the basis error is compared to the truncation error of the flow reconstruction or the stochastic variability of flow realizations. However, including key features from the different flows across the parameter space is recommended.

Furthermore, global bases allow direct comparisons of the role of each mode in different flows, and therefore identification of how the dynamics of different flow cases change throughout the parameter space. For instance, the first modes contribute govern the gradual changes in wake aerodynamics further into the farm, while higher modes provide comparable variability for the wake aerodynamics, irrespective of location in the wind farm.

The efficiency of global basis is here exemplified on a LES database of long rows of wind turbines for different operating conditions, and the coherent wake structures might be particularly beneficial for the efficiency of the global bases to be utilized for the development of reduced order models. However, the results are expected to be generally applicable to other flow scenarios, where dimensional reduction methods are utilized.

6. Acknowledgements

Computational resources have been provided by the DTU cluster Sophia. DTU Computing Center Technical University of Denmark (2022) and the work has been partly funded by DTU Wind Energy through the Wind Farm Flow CCA 2022.

7. Code availability

The codes EllipSys3D and Flex5 are available with a license.

8. Data availability

Subsets of the datasets can be made available by contacting the authors.

97. Competing interests

The authors declare that they have no known competing financial interests or personal relationships that could have appeared to influence the work reported in this paper.

108. Author contribution

The three authors conceived the idea of this article based on previous work developed by Andersen and Murcia Leon. The LES simulations were done by Andersen, and Cespedes did the POD calculations and convergence of the global modes based

on a code previously developed mainly by Murcia Leon. Finally, the writing and revision of this article was equally distributed among the three authors.

References

- 475 Aagaard Madsen, H., Bak, C., Schmidt Paulsen, U., Gaunaa, M., Fuglsang, P., Romblad, J., Olesen, N., Enevoldsen, P., Laursen, J., Jensen, L., 2010. The DAN-AERO MW Experiments: Final report. Number 1726(EN) in Denmark. Forskningscenter Risoe. Risoe-R, Danmarks Tekniske Universitet, Risø Nationallaboratoriet for Bæredygtig Energi.
- [Andersen, S., Sørensen, J., Mikkelsen, R., 2014. Reduced order model of the inherent turbulence of wind turbine wakes inside an infinitely long row of turbines. Journal of Physics: Conference Series \(Online\) 555. doi:10.1088/1742-6596/555/1/012005.](#)
- 480 Andersen, S., Witha, B., Breton, S.P., Sørensen, J., Mikkelsen, R., Ivanell, S., 2015. Quantifying variability of large eddy simulations of very large wind farms. Journal of Physics: Conference Series (Online) 625. doi:10.1088/1742-6596/625/1/012027.
- Andersen, S.J., Breton, S.P., Witha, B., Ivanell, S., Sørensen, J.N., 2020. Global trends of large wind farm performance based on high fidelity simulations. Wind Energy Science Discussions 2020, 1–27. doi:10.5194/wes-2019-109.
- 485 Andersen, S.J., Murcia Leon, J.P., 2022. Predictive and stochastic reducedorder modeling of wind turbine wake dynamics. Wind Energy Science 7, 2117–2133. doi:10.5194/wes-7-2117-2022.
- Andersen, S.J., Murcia Leon, J.P., 2023. Stochastic wind farm flow generation using a reduced order model of les. Journal of Physics: Conference Series 2505, 012050. doi:10.1088/1742-6596/2505/1/012050.
- Andersen, S.J., Sørensen, J.N., Mikkelsen, R.F., 2017. Turbulence and entrainment length scales in large wind farms. Philosophical Transactions of the Royal Society of London A: Mathematical, Physical and Engineering Sciences 375. doi:10.1098/rsta.2016.0107.
- 490 [Bastine, D., Bastine, D., Vollmer, L., Vollmer, L., Wächter, M., Peinke, J., Peinke, J., 2018. Stochastic wake modelling based on POD analysis. Energies 11, 612. doi:10.3390/en11030612.](#)
- Bergmann, M., Bruneau, C.H., Iollo, A., 2009. Enablers for robust pod models. Journal of Computational Physics 228, 516–538. URL:https://www.sciencedirect.com/science/article/pii/S002199910800510X, doi:https://doi.org/10.1016/j.jcp.2008.09.024
- 495 Berkooz, G., Holmes, P., Lumley, J.L., 1993. The proper orthogonal decomposition in the analysis of turbulent flows. Annual Review of Fluid Mechanics 25, 539–575. doi:10.1146/annurev.fl.25.010193.002543.
- Buoso, S., Manzoni, A., Alkadhhi, H., Kurtcuoglu, V., 2022. Stabilized reduced-order models for unsteady incompressible flows in threedimensional parametrized domains. Computers & Fluids 246, 105604. doi:10.1016/j.compfluid.2022.105604.
- 500 Calaf, M., Meneveau, C., Meyers, J., 2010. Large eddy simulation study of fully developed wind-turbine array boundary layers. Physics of fluids 22, 015110. doi:10.1063/1.3291077.

- Castro, I.P., 2007. Rough-wall boundary layers: mean flow universality. *Journal of Fluid Mechanics* 585, 469–485. doi:10.1017/S0022112007006921.
- 505 Christensen., E.A., Brøns, M., Sørensen, J.N., 1999. Evaluation of proper orthogonal decomposition–based decomposition techniques applied to parameter-dependent nonturbulent flows. *SIAM Journal on Scientific Computing* 21, 1419–1434. doi:10.1137/S1064827598333181.
- Colonus, T., Rowley, C., Freund, J., Murray, R., 2002. On the choice of norm for modeling compressible flow dynamics at reduced-order using the pod, in: *Proceedings of the 41st IEEE Conference on Decision and Control, 2002.*, pp. 3273–3278 vol.3. doi:10.1109/CDC.2002.1184376.
- 510 [De Cillis, G., Cherubini, S., Semeraro, O., Leonardi, S., De Palma, P., 2021. Pod-based analysis of a wind turbine wake under the influence of tower and nacelle. *Wind Energy* 24, 609–633. doi:https://doi.org/10.1002/we.2592.](https://doi.org/10.1002/we.2592)
- Deardorff, J.W., 1980. Stratocumulus-capped mixed layers derived from a three-dimensional model. *Boundary-Layer Meteorology* 18, 495–527. doi:10.1007/BF00119502.
- 515 [Debnath, M., Santoni, C., Leonardi, S., Jungo, G.V., 2017. Towards reduced order modelling for predicting the dynamics of coherent vorticity structures within wind turbine wakes. *Philosophical Transactions of the Royal Society A: Mathematical, Physical and Engineering Sciences* 375, 20160108. doi:10.1098/rsta.2016.0108.](https://doi.org/10.1098/rsta.2016.0108)
- Fu, J., Xiao, D., Fu, R., Li, C., Zhu, C., Arcucci, R., Navon, I.M., 2023. Physics-data combined machine learning for parametric reducedorder modelling of nonlinear dynamical systems in small-data regimes. *Computer Methods in Applied Mechanics and*
- 520 *Engineering* 404, 115771. doi:10.1016/j.cma.2022.115771.
- George, W.K., 1988. Insight into the dynamics of coherent structures from a proper orthogonal decomposition. *Proceedings of the International Centre for Heat and Mass Transfer* , 469–487.
- Haasdonk, B., 2013. Convergence rates of the pod–greedy method. *ESAIM: Mathematical Modelling and Numerical Analysis* 47, 859–873. doi:10.1051/m2an/2012045.
- 525 Haasdonk, B., Dihlmann, M., Ohlberger, M., 2011. A training set and multiple bases generation approach for parameterized model reduction based on adaptive grids in parameter space. *Mathematical and Computer Modelling of Dynamical Systems* 17, 423–442. doi:10.1080/13873954.2011.547674.
- [Hamilton, N., Viggiano, B., Calaf, M., Tutkun, M., Cal, R.B., 2018. A generalized framework for reduced-order modeling of a wind turbine wake. *Wind Energy* 21, 373–390. doi:https://doi.org/10.1002/we.2167.](https://doi.org/10.1002/we.2167)
- 530 Hekmati, A., Ricot, D., Druault, P., 2011. About the convergence of POD and EPOD modes computed from CFD simulation. *Computers & Fluids* 50, 60–71. doi:https://doi.org/10.1016/j.compfluid.2011.06.018.
- Hesthaven, J.S., Rozza, G., Stamm, B., 2016. *Certified Reduced Basis Methods for Parametrized Partial Differential Equations*. Springer International Publishing. doi:10.1007/978-3-319-22470-1.
- Hinton, G.E., Salakhutdinov, R.R., 2006. Reducing the dimensionality of data with neural networks. *Science* 313, 504–507. doi:10.1126/science.1127647.
- 535

- Hodgson, E.L., Andersen, S.J., Troldborg, N., Forsting, A.M., Mikkelsen, R.F., Sørensen, J.N., 2021. A quantitative comparison of aeroelastic computations using flex5 and actuator methods in les. *Journal of Physics: Conference Series* 1934, 012014. doi:10.1088/1742-6596/1934/1/012014.
- 540 [Hodgson, E.L., Souaiby, M., Troldborg, N., Porté-Agel, F., Andersen, S.J., 2023. Cross-code verification of non-neutral abl and single wind turbine wake modelling in les. *Journal of Physics: Conference Series* 2505, 012009. doi:10.1088/1742-6596/2505/1/012009.](#)
- van der Laan, M., Andersen, S., Kelly, M., Baungaard, M., 2020. Fluid scaling laws of idealized wind farm simulations. *Journal of Physics: Conference Series* 1618, 062018. doi:10.1088/1742-6596/1618/6/062018.
- Lee, M.W., Dowell, E.H., 2020. Improving the predictable accuracy of fluid Galerkin reduced-order models using two POD
545 bases. *Nonlinear Dynamics* 101, 1457–1471. doi:10.1007/s11071-020-05833-x.
- Lumley, J.L., 1967. The structure of inhomogeneous turbulence. *Atmospheric turbulence and wave propagation* , 166–178.
- Meyer, K.E., Pedersen, J.M., Özcan, O., 2007. A turbulent jet in crossflow analysed with proper orthogonal decomposition. *Journal of Fluid Mechanics* 583, 199–227. doi:10.1017/S0022112007006143.
- Michelsen, J.A., 1992. Basis3D - a Platform for Development of Multiblock PDE Solvers: - release. volume AFM 92-05.
550 Technical University of Denmark.
- Michelsen, J.A., 1994. Block structured Multigrid solution of 2D and 3D elliptic PDE's. Technical Report Technical University of Denmark AFM 94-06.
- Mikkelsen, R.F., 2004. Actuator Disc Methods Applied to Wind Turbines. Ph.D. thesis. Technical University of Denmark.
- Neumann, J., Wengle, H., 2004. Coherent structures in controlled separated flow over sharp-edged and rounded steps. *Journal of Turbulence* 5, N22. doi:10.1088/1468-5248/5/1/022.
- Noack, B., Morzyanski, M., Tadmor, G., 2011. *Reduced-Order Modelling for Flow Control. Courses and lectures*, SpringerWienNewYork.
- Nony, B.X., Rochoux, M., Jaravel, T., Lucor, D., 2022. Reduced-order modelling for parameterized large-eddy simulations of atmospheric pollutant dispersion. arXiv:2208.01518.
- 560 Olesen, P.J., Hodzic, A., Andersen, S.J., Sørensen, N.N., Velte, C.M., 2023. Dissipation-optimized proper orthogonal decomposition. *Physics of Fluids* 35, 015131. doi:10.1063/5.0131923.
- Olesen, P.J., Soucasse, L., Podvin, B., Velte, C.M., 2024. Dissipation-based proper orthogonal decomposition of turbulent Rayleigh–Bénard convection flow. *Physics of Fluids* 36, 035109. doi:10.1063/5.0188430.
- Øye, S., 1996. Flex4 simulation of wind turbine dynamics. 28th IEA Meeting of Experts Concerning State of the Art of
565 Aeroelastic Codes for Wind Turbine Calculations , 71–76.
- Porté-Agel, F., Bastankhah, M., Shamsoddin, S., 2020. Wind-turbine and wind-farm flows: A review. *Boundary-Layer Meteorology* 174, 1–59. doi:10.1007/s10546-019-00473-0.
- Quarteroni, A., Manzoni, A., Negri, F., 2016. RB Methods: Basic Principles, Basic Properties. doi:10.1007/978-3-319-15431-2_3.

- 570 Schmid, P.J., 2010. Dynamic mode decomposition of numerical and experimental data. *Journal of Fluid Mechanics* 656, 5–28. doi:10.1017/S0022112010001217.
- Semaan, R., Kumar, P., Burnazzi, M., Tissot, G., Cordier, L., Noack, B.R., 2016. Reduced-order modelling of the flow around a high-lift configuration with unsteady coanda blowing. *Journal of Fluid Mechanics* 800, 72–110. doi:10.1017/jfm.2016.380.
- Shen, W.Z., Michelsen, J.A., Sørensen, N.N., Sørensen, J.N., 2003. An improved simplec method on collocated grids for steady and unsteady flow computations. *Numerical Heat Transfer, Part B: Fundamentals* 43, 221–239. doi:10.1080/713836202.
- 575 Sieber, M., Paschereit, C.O., Oberleithner, K., 2016. Spectral proper orthogonal decomposition. *Journal of Fluid Mechanics* 792, 798–828. doi:10.1017/jfm.2016.103.
- Sirovich, L., 1987. Turbulence and the dynamics of coherent structures. I. coherent structures. *Quarterly of Applied Mathematics* 45, 561–70. doi:10.1090/qam/910462.
- 580 Smith, T.R., Moehlis, J., Holmes, P., 2005. Low-dimensional models for turbulent plane couette flow in a minimal flow unit. *Journal of Fluid Mechanics* 538, 71–110. doi:10.1017/S0022112005005288.
- Sørensen, J.N., Mikkelsen, R., Henningson, D.S., Ivanell, S., Sarmast, S., Andersen, S.J., 2015. Simulation of wind turbine wakes using the actuator line technique. *Royal Society of London. Philosophical Transactions A. Mathematical, Physical and Engineering Sciences* 373, 20140071–20140071. doi:10.1098/rsta.2014.0071.
- 585 Sørensen, J.N., Shen, W.Z., Munduate, X., 1998. Analysis of wake states by a full-field actuator disc model. *Wind Energy* 1, 73–88. doi: [https://doi.org/10.1002/\(SICI\)1099-1824\(199812\)1:2<73::AID-WE12>3.0.CO;2-L](https://doi.org/10.1002/(SICI)1099-1824(199812)1:2<73::AID-WE12>3.0.CO;2-L).
- Sørensen, N., 1995. General purpose flow solver applied to flow over hills. Ph.D. thesis. Risø National Laboratory. Published 2003.
- 590 Stankiewicz, W., Morzynski, M., Kotecki, K., Noack, B.R., 2017. On the need of mode interpolation for data-driven Galerkin models of a transient flow around a sphere. *Theoretical and Computational Fluid Dynamics* 31, 111–126. doi:10.1007/s00162-016-0408-7.
- Taira, K., Brunton, S.L., Dawson, S.T., Rowley, C.W., Colonius, T., McKeon, B.J., Schmidt, O.T., Gordeyev, S., Theofilis, V., Ukeiley, L.S., 2017. Modal analysis of fluid flows: An overview. *Aiaa Journal* 55, 4013–4041. doi:10.2514/1.J056060.
- 595 Technical University of Denmark, 2022. Sophia hpc cluster. URL: <https://dtu-sophia.github.io/docs/>, doi:10.57940/FAFC-6M81.
- [Technical University of Denmark, 2022. Sophia hpc cluster. URL: https://dtu-sophia.github.io/docs/](https://dtu-sophia.github.io/docs/), doi:10.57940/FAFC-6M81.
- [Troldborg, N., Meyer Forsting, A.R., 2017. A simple model of the wind turbine induction zone derived from numerical simulations. Wind Energy 20, 2011–2020. doi:https://doi.org/10.1002/we.2137.](https://doi.org/10.1002/we.2137)
- 600 [VerHulst, C., Meneveau, C., 2014. Large eddy simulation study of the kinetic energy entrainment by energetic turbulent flow structures in large wind farms. Physics of Fluids 26. doi:http://dx.doi.org/10.1063/1.4865755.](http://dx.doi.org/10.1063/1.4865755)

Vermeer, N.J., Sørensen, J., Crespo, A., 2003. Wind turbine wake aerodynamics. Progress in Aerospace Sciences - PROG AEROSP SCI 39, 467– 510. doi:10.1016/S0376-0421(03)00078-2.

605 [Vinuesa, R., Brunton, S.L., 2022 Enhancing computational fluid dynamics with machine learning. Nature Computational Science 2, 358-366. doi: 10.1038/s43588-022-00264-7.](#)

Xiao, D., Fang, F., Pain, C., Navon, I., 2017. A parameterized nonintrusive reduced order model and error analysis for general time-dependent nonlinear partial differential equations and its applications. Computer Methods in Applied Mechanics and Engineering 317, 868–889. doi:10.1016/j.cma.2016.12.033.

610 [Zahle, F., Sorensen, N., 2008. Overset Grid Flow Simulation on a Modern Wind Turbine. doi:10.2514/6.2008-6727.](#)