

Comparison of measured and simulated fatigue loads on a multi-megawatt wind turbine

Ansh Patel^{1, 2}, Jakob Mann¹, Mikael Sjöholm¹, Kasper Zinck², and Karunya Raj²

¹DTU Wind and Energy Systems, Technical University of Denmark Risø Campus, 4000 Roskilde, Denmark

²Vestas Wind Systems A/S, Hedeager 42, 8200 Aarhus, Denmark

Correspondence: Ansh Patel (patel@dtu.dk)

Abstract. The Mann turbulence model is widely used in the design and certification of multi-megawatt wind turbines. However, these turbines operate in a region of the atmosphere where the model's assumptions are violated. One of the most significant assumptions is that of neutral stability conditions, which raises concerns about the model's accuracy for load simulations. To investigate this, we compare fatigue loads measured on a 15 MW wind turbine to simulations performed using an aeroelastic solver. The inflow was characterized using data from a meteorological mast equipped with sonic and cup anemometers. The turbulence model was fitted to measurements of auto-spectra under varying wind speeds and stability conditions, while the vertical profile of wind speed was represented by a power law. The resulting wind fields were then used as input to the aeroelastic simulations.

We first present a comparison of measured fatigue loads on the tower and blades across different atmospheric stability regimes. On average, the fore-aft loads at the bottom of the tower were 98% higher under unstable atmospheric conditions as compared to stable conditions. On the other hand, the difference in flapwise blade loads between unstable and stable conditions was 20% below rated wind speed and -2% at higher wind speeds. These results underscore the importance of accounting for atmospheric stability in wind turbine siting and load verification campaigns. A subsequent comparison of measurements and simulations revealed that measured and simulated loads tend to fall within three standard deviations of each other, even under non-neutral conditions. However, the simulated fatigue loads on the tower were overestimated by a margin of five standard deviations under some stable conditions, likely due to incorrect predictions of the spectral coherence made by the turbulence model. Shear extrapolation based on the power law might also lead to overestimation of blade loads in the simulations.

These results indicate that, despite its simplifying assumptions, the Mann model when fitted to measurements of turbulence auto-spectra, does not introduce significant errors in fatigue load simulations for solitary multi-megawatt wind turbines.

20 1 Introduction

The Wind turbines - Part 1: Design requirements of the International Electrotechnical Commission (IEC) (IEC, 2019) recommends the Mann (Mann, 1994) turbulence model and IEC Kaimal (Kaimal et al., 1972) spectra with exponential decay coherence (Davenport, 1961) as inputs for aeroelastic simulations of wind turbines. These models are designed to capture turbulence in the surface layer of the atmosphere. However, modern wind turbines with rotor diameters greater than 200 m

25 and hub heights exceeding 100 m often operate outside the surface layer. The assumptions behind the aforementioned models are no longer valid in this region of the atmosphere (Veers et al., 2023, section 3.2, p. 1083). For instance, the models assume neutral stability conditions, homogeneous turbulence in all directions of space and Gaussian statistics at the smallest scales. On the contrary, atmospheric turbulence is often thermally generated (Obukhov, 1962), is inhomogeneous in the vertical direction and follows non-Gaussian statistics at the smallest scales (Wyngaard, 2010, p. 156). Thus, it is uncertain whether the Mann and Kaimal models can provide accurate estimates of the dynamic loads on multi-megawatt wind turbines.

The aim of this study is to gauge the accuracy of load simulations where the input turbulence field is described by the Mann model, by comparing with measurements of fatigue loads from a 15 MW prototype wind turbine.

The impact of inflow turbulence on the fatigue loads experienced by a wind turbine has been well documented in the literature. Robertson et al. (2019) performed a sensitivity study to evaluate the influence of various inflow parameters such as turbulence intensity, length scales, vertical shear and veer. They found that the turbulence and length scale of the streamwise wind component, along with vertical shear, played a primary role in determining the fatigue loads on a turbine. Sathe et al. (2013) theoretically studied the impact of atmospheric stability on fatigue loads. They showed that the tower and rotor loads were significantly higher during unstable conditions compared to the loads under stable stratification. Nybø et al. (2021a) simulated the fatigue loads on a 15 MW wind turbine using different inflow specifications such as turbulence boxes generated using the Mann and Kaimal models and wind fields from Large Eddy Simulations (LES). The simulated loads showed considerable differences even when the three methods had the same one-point statistics. The variability was attributed to the difference in the spatial structure of turbulence, but given the lack of loads measurements, it was not possible to determine which inflow models were the most accurate.

Concurrently, the Mann model has been modified to capture phenomena that were lacking in the original formulation. These include atmospheric stability (Chougule et al., 2018), dependence on time (de Maré and Mann, 2016), mesoscale turbulence (Syed and Mann, 2024) and inhomogeneity (Guo et al., 2026), although the model of Chougule et al. (2018) is not numerically stable for convective conditions. On the other hand, non-Gaussian turbulence and effects of the Coriolis force have not been included in the model as of yet. However, given the absence of measurements of loads from an operational wind turbine to serve as the ground truth, it is unclear whether these phenomena lead to significant errors in aeroelastic simulations. Resolving this uncertainty requires a so-called "one-to-one" comparison, where measured loads are compared to simulated loads. The actual inflow experienced by the turbine is replicated in the simulation by using measurements of turbulence from a met-mast or a lidar. In this regard, Brown et al. (2024) performed a one-to-one comparison on a 2.8 MW turbine. Inflow measurements from an array of sonic anemometers, wind vanes, and a nacelle lidar were assimilated into the simulation environment using a few different methods (Jonkman and Buhl, 2006; Rinker, 2022). This study showcased the value of one-to-one comparisons while also highlighting the associated difficulties. The flapwise blade and fore-aft tower loads from the simulations showed a significant bias compared to the measurements due to inaccuracies in the aerodynamic modelling and the absence of certain controller features in the simulation environment. Indeed, Doubrawa et al. (2024) showed that the bias can be reduced to a large extent by incorporating some features of an industrial controller such as rotor position control. Although in most studies, it is difficult to replicate the turbine within a simulation as the blade design and controller architecture are confidential. However,

60 the work of Dimitrov and Natarajan (2017) did not suffer from these drawbacks. They compared inflow assimilation using
met-masts to lidar-based methods and found that the uncertainties in the loads estimates from lidar-based and met-mast-based
flow assimilation were similar and occasionally lower when using the lidar. Moreover, the simulated loads agreed with the
measurements at different wind speeds and turbulence intensities. However, this study considered an older turbine variant
with all measurements taken below 100 m in the atmosphere. Thus, the validity of the Mann model for load simulations of
65 multi-megawatt wind turbines remained an open question.

We present fatigue loads measured on a 15 MW prototype under varying atmospheric conditions and compare them to
aeroelastic simulations with the same controller architecture, aerodynamic, and structural properties as the real turbine. The
inflow is assimilated by fitting the Mann model to measurements of turbulence auto-spectra from a 155 m tall met-mast. To the
authors' knowledge, the relationship between fatigue loads on a wind turbine operating in the field and atmospheric stability
70 has previously not been documented in the literature. Moreover, we present full-scale measurements in the natural atmosphere
which form the basis for load validation. Full-scale measurements are important in this context as they capture features of the
atmosphere that are not modelled by simulations.

The paper is organised as follows: Sect. 2 presents the measurement campaign, the method of inflow assimilation and a brief
overview of the simulation environment. The results are described in Sect. 3 starting with the dependence of fatigue loads on
75 atmospheric stability followed by one-to-one comparisons of blade and tower loads. Finally, the conclusions of this study are
reflected upon in Sect. 4.

2 Methods

2.1 Measurement campaign

The purpose of the measurement campaign was, among others, power curve verification and load validation of the Vestas V236
80 prototype wind turbine. The turbine has a rotor diameter of 236 m and a hub-height of 163 m while the rated power output is
15 MW. It is an offshore wind turbine and several variants are currently under installation in wind farms in the North Sea and
the Baltic Sea.

The campaign lasted for two years, from 2023 to 2025 and took place at Test Center Østerild. It is located in north Jutland,
Denmark about 50 km from the coast. We refer the reader to Peña (2019) for a detailed description of the site. The prototype
85 turbine was equipped with many sensors that measured bending moments on various components, the power output of the
turbine, pitch angle of all the blades, rotation speed, among other operational data. An overview of the data signals used in this
study is shown in Table 1. An IEC-complaint meteorological mast was also present about 660 m to the west of the prototype.
Since the dominant wind direction was westerly, the mast was often present upstream of the turbine. It was equipped with a
sonic anemometer at 155 m, cup anemometers at 45 m, 104 m and 163 m, and wind vanes at 45 m and 159 m above ground
90 level.

Signal (notation)	Measurement device
Power output (P)	Converter
Rotation speed of low speed shaft (Ω)	Tachometer
Pitch of i -th blade (ζ_i)	Pitch sensor
Bending moment at root of i -th blade in flapwise direction (M_{bi}^f)	Strain gauge
Bending moment at root of i -th blade in edgewise direction (M_{bi}^e)	Strain gauge
Bending moment at tower bottom in mean wind direction (M_{tb}^{fa})	Strain gauge
Bending moment at tower bottom in direction perpendicular to mean wind (M_{tb}^{ss})	Strain gauge
Bending moment at tower top in mean wind direction (M_{tt}^{fa})	Strain gauge
Bending moment at tower top in direction perpendicular to mean wind (M_{tt}^{ss})	Strain gauge

Table 1. An overview of the signals analysed in this study and the devices that measure them.

Processing step	Data availability (%)
Number of 10 min periods between start and end of campaign	100.0
Data collected	90.9
10-min mean wind direction at 155 m between 225° to 315°	20.2
10-min mean wind speed at 155 m below cut-in or above cut-out	19.5
Removing periods where the turbine is not in production due to tests and maintenance	17.8
Selecting the longest contiguous period in each bin of duration greater than 40 min	0.28

Table 2. The data processing steps and the resulting availability. Note that the data availability in each subsequent row is expressed as a percentage of the total data available between the start and end of the campaign.

2.2 Processing and binning of data

The steps involved in the curation of the data are described below with the data availability after each step shown in Tab. 2. Note that the goal of data curation was to obtain turbulence measurements appropriate for a one-to-one comparison.

The data were sampled at a frequency of 5 Hz and partitioned into periods of 10 minutes. This sampling frequency is chosen as turbulent fluctuations that are faster than the Nyquist frequency of 2.5 Hz are not deemed to be important from a fatigue loads perspective. Only those periods were selected for further analysis, where the 10 min mean wind direction $\bar{\theta}$ measured by the wind vane at 163 m was between 225° to 315° . Note that $\bar{\cdot}$ refers to time averaging and the wind directions are expressed in meteorological convention with 0° being wind coming from the north. The westerly sector is selected because winds from this direction can be assumed to be homogenous and free from the wake of neighbouring turbines (Peña, 2019). Subsequently, the 10 min mean wind speed (\bar{u}) and direction measured by the sonic anemometer at 155 m were compared to the cup and vane at 163 m and 159 m respectively. The purpose of this comparison was to identify inaccuracies in the instruments and remove the corresponding periods from the dataset. As seen in Fig. 1, the instruments agreed in the measurements of the mean wind speed and direction. Although biases of 0.3 m s^{-1} and 1° are detected in (a) and (b) respectively, this can be attributed to the sonic

Stability	Monin-Obukhov length (m)
Very stable (vs)	$10 \leq L_{mo} < 50$
Stable (s)	$50 \leq L_{mo} < 200$
Near neutral stable (nns)	$200 \leq L_{mo} \leq 500$
Neutral (n)	$ L_{mo} > 500$
Near neutral unstable (nnu)	$-500 \leq L_{mo} < -200$
Unstable (u)	$-200 \leq L_{mo} < -100$
Very unstable (vu)	$-100 \leq L_{mo} \leq -50$

Table 3. Classifications of atmospheric stability based on the Monin-Obukhov length.

anemometer being placed 8 m and 4 m lower than the cup and vane respectively. Next, the 10 min periods where the mean wind speed was outside the turbine operating region were removed. This was followed by calculating the Monin-Obukhov length (L_{mo}) for each of the remaining 10 min periods:

$$L_{mo} = \frac{-u_*^3 \overline{\theta_v}}{\kappa g w' \theta'_v}, \quad (1)$$

where θ_v is the virtual potential temperature, κ is the von Kármán constant, w' denotes the fluctuating vertical wind-velocity component and $\overline{w' \theta'_v}$ is the vertical flux of virtual potential temperature. Moreover, the friction velocity, u_* is given by:

$$u_* = \sqrt{-\overline{u'w'}}. \quad (2)$$

Note that we used the sonic temperature (T_s) in Eq. 1, as $\overline{T_s}$ and $\overline{w'T'_s}$ are considered to be acceptable approximations to $\overline{\theta_v}$ and $\overline{w'\theta'_v}$ respectively (Schotanus et al., 1983).

The 10 minute data were subsequently binned according to the mean wind speed measured by the sonic anemometer at 155 m and the Monin-Obukhov length based on the stability classifications suggested by Gryning et al. (2007) and shown in Table 3. The size of the mean wind speed bins was 2 m s^{-1} with the bin centres being odd numbers from 5 to 21. Table 3 is only applicable within the surface layer where the friction velocity and temperature flux do not change with height. While this assumption may not be strictly valid for the measurement height of 155 m, the reader is cautioned against using Table 3 outside the surface layer.

The probability distribution of L_{mo} conditioned on \bar{u} is shown in Fig. 2. We found stable conditions to be most frequent at low wind speeds, contrary to the observations of Peña (2019) wherein unstable conditions were dominant at wind speeds below 11 m s^{-1} . This observation is likely a sampling bias. The instruments briefly stopped recording data in the summer of 2024 (as noted in row 2 of Tab. 2) when unstable conditions are more frequent. Neutral and near-neutral conditions were dominant at mean wind speeds above 14 m s^{-1} which is likely a result of mechanically generated turbulence being relatively stronger than the effects of buoyancy.

In the subsequent processing step, we aimed to find the longest period of contiguous measurements within each bin. Table 4 shows the capture matrix indicating the number of contiguous 10 min periods (N_{bin}) found for each bin. The turbulence mea-

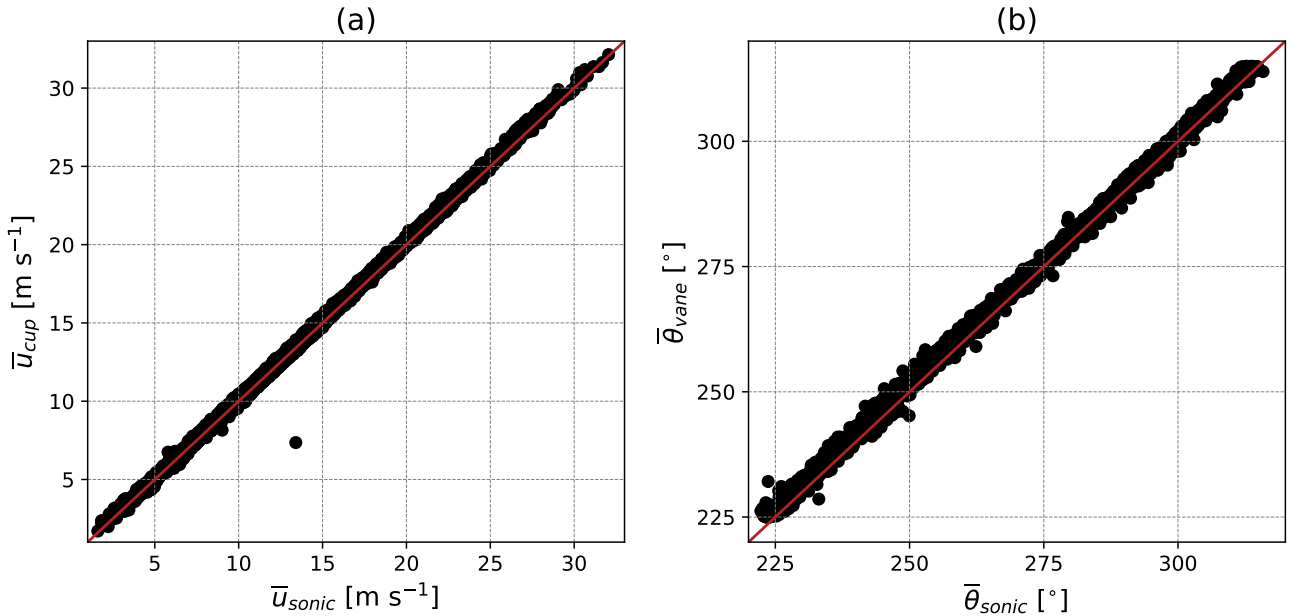


Figure 1. (a): The 10 min mean wind speed measured by the sonic anemometer at a height of 155 m compared to measurements made by the cup anemometer at a height of 163 m, when the mean wind direction was between 225° to 315° . (b): The 10 min mean wind direction (in meteorological coordinates) measured by the sonic anemometer compared to measurements made by the wind vane at a height of 159 m. Note that the red line has a slope equal to one.

measurements (namely the auto-spectra) were averaged over N_{bin} periods and fitted to the Mann model. Thus, we used Bartlett's method (Bartlett, 1948) to compute the auto-spectra. If $N_{bin} < 4$, the uncertainties in the measurements were deemed to be too high and a fit with the Mann model could not be obtained. As a consequence, a one-to-one comparison could not be carried out in the corresponding bins. In other words, each bin required at least 40 minutes of continuous data. This condition was satisfied in 39 bins.

The choice to limit the analysis to periods with contiguous data was motivated by the observation that wind speed and stability did not fully describe turbulence at these heights. Indeed, when computing the spectra for all 10 min periods within a given bin, we found the spread to be large, encompassing three orders of magnitude, from $10^{-3} \text{ m}^2\text{s}^{-2}$ to $1 \text{ m}^2\text{s}^{-2}$. Additionally, as described later, spectral fitting was the preferred method for inflow assimilation. Thus, by attempting to fit the Mann model to the bin-averaged spectra, we risked lumping together distinct atmospheric conditions which would add significant uncertainty to the comparisons of loads. On the other hand, by selecting a contiguous period of measurements with minimal spread in the individual spectra, the resultant uncertainty was lower and easier to quantify as it was purely statistical in nature.

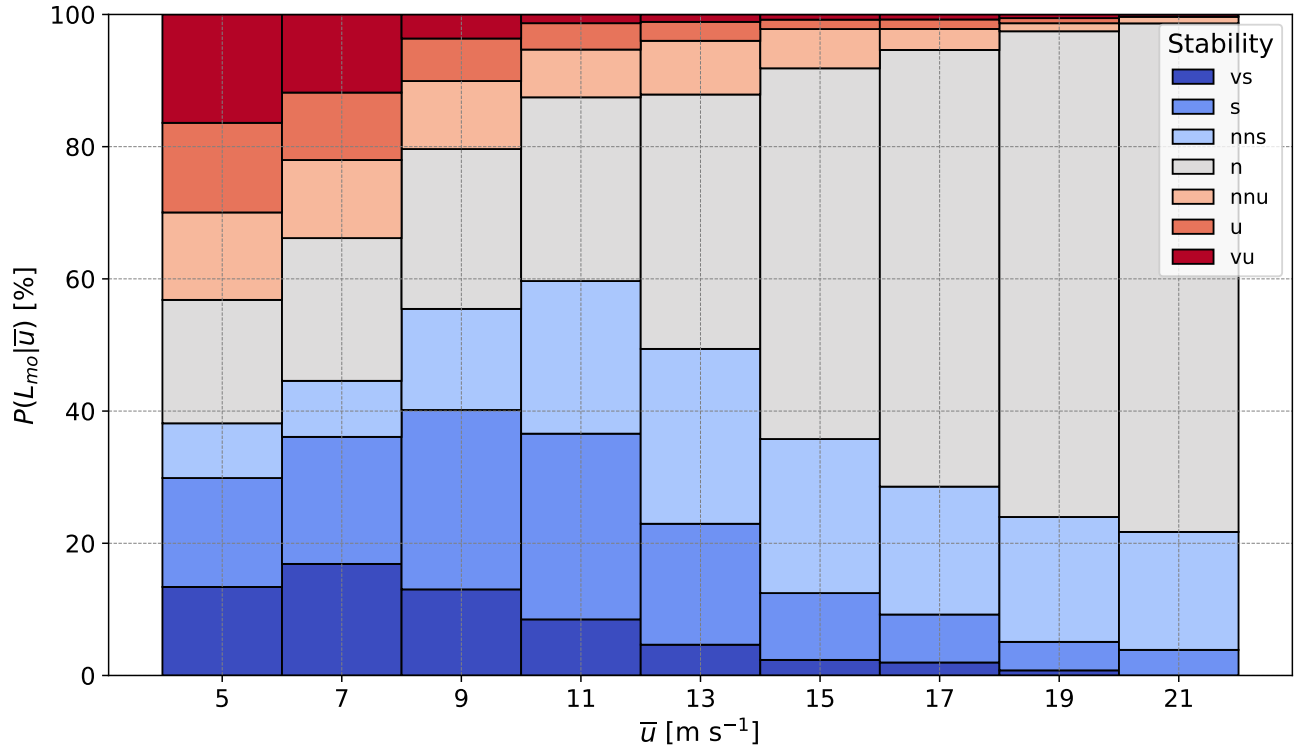


Figure 2. The distribution of atmospheric stability quantified by the Monin-Obukhov length (L_{mo}) conditioned on the 10 min mean wind speed (\bar{u}).

\bar{u} -bin centre [m s^{-1}]	vs	s	nns	n	nnu	u	vu
5	6	4	-	4	5	4	6
7	8	7	-	9	4	4	-
9	9	17	6	10	6	4	-
11	6	11	8	14	5	4	-
13	4	7	9	10	5	-	-
15	-	6	7	10	-	-	-
17	-	7	4	16	-	-	-
19	-	5	10	12	-	-	-
21	-	-	5	10	-	-	-

Table 4. The number of contiguous 10 min periods (N_{bin}) per mean wind speed and stability bin used to compute the auto-spectra of turbulence.

2.3 Assimilation of inflow

140 The goal of inflow assimilation is to achieve a faithful representation of the measured inflow in the simulation environment. To replicate the turbulence in the simulations, we use spectral fitting. Herein, the Mann model is fitted to the auto-spectra of the along-wind u , cross-wind v and vertical w wind components as well as the real part of the uw -cross-spectrum to obtain the three model parameters: L , $\alpha\varepsilon^{2/3}$ and Γ for each stability and wind speed bin. These parameters are then used to generate a turbulence box which is provided as input to the aeroelastic solver (Mann, 1998).

145 Previous one-to-one comparisons have used different inflow assimilation methods such as scaling a turbulence box with the measured variances in the three components or by constraining a turbulence box on a set of measurements. However, the former has been shown to possess a high level of uncertainty (Liew and Larsen, 2022) while the latter is more suitable for measurements from a nacelle lidar (Rinker, 2022). Since measurements of the auto-spectra contain the length scale and variance, both of which have a significant influence on fatigue loads, fitting the turbulence model to the spectra can achieve
150 accurate assimilation of the inflow for the purposes of load validation (Nybø et al., 2021b).

The fitting procedure is as follows. Measurements of auto-spectra are computed by:

$$S_i(f) = \frac{2\pi}{N_{bin}T} \sum_{k=1}^{N_{bin}} |u_i^k(f, T)|^2, \quad (3)$$

where,

$$u_i^k(f, T) = \frac{1}{2\pi} \int_0^T u_i^k(t) \exp(-2\pi i f t) dt, \quad (4)$$

155 is the Fourier transform of the i -th component such that $(u_1, u_2, u_3) = (u, v, w)$ and $T = 600$ s. Note that measurements of the three wind components at a sampling frequency of 5 Hz are obtained from the sonic anemometer. The spectra are further block-averaged over logarithmic bins, N_l , to reduce the level of noise at the high frequency end of the spectrum. The block-averaging is done such that there are 12 points per decade which means that N_l increases with frequency. Hence, the statistical uncertainty in the measurements, $\sigma(\langle S_i \rangle)$ is quantified by:

$$160 \quad \sigma(\langle S_i \rangle) = \frac{\langle S_i \rangle}{\sqrt{N_{bin}N_l}}. \quad (5)$$

Then, the model parameters which minimize the error, ξ^2 , are obtained by an optimization algorithm. ξ^2 is defined as:

$$\xi^2(L, \Gamma, \alpha\varepsilon^{2/3}) = \sum_{i=1}^3 \sum_{n=1}^N [\log(k_1^n F_i) - \log(k_1^n F_{i,m})]^2 + \sum_{n=1}^N [\log(k_1^n \Re(\chi_{uw})) - \log(k_1^n \Re(\chi_{uw,m}))]^2, \quad (6)$$

where the subscript m refers to the estimated spectra and χ_{uw} is the uw cross-spectrum. On the other hand, the modelled spectra are given by:

$$165 \quad F_i(k_1; L, \Gamma, \alpha\varepsilon^{2/3}) = \iint_{-\infty}^{\infty} \Phi_{ii}(\mathbf{k}; L, \Gamma, \alpha\varepsilon^{2/3}) dk_2 dk_3, \quad (7)$$

Here, $\Phi(\mathbf{k})$ is the spectral tensor derived by Mann (1994) defined over wave number space: $\mathbf{k} = (k_1, k_2, k_3)$. Note that Taylor's hypothesis is used to move between frequency and wave number space. Moreover, the coherence, γ_{uu}^2 , is defined as:

$$\gamma_{uu}^2(f, \Delta_y, \Delta_z) = \frac{|\chi_{uu}(f, \Delta_y, \Delta_z)|^2}{S_u(f, 0, 0)S_u(f, \Delta_y, \Delta_z)}, \quad (8)$$

where, Δ_y and Δ_z are the lateral and vertical separations respectively and χ_{uu} is the cross spectrum between $u(t, 0, 0)$ and $u(t, \Delta_y, \Delta_z)$.

Figure 3 shows the estimated spectra under different stability conditions along with the fit derived from Eq. (6) at a mean wind speed of 9 m s^{-1} . Note that the area under the spectra of a given component is equal to the variance of that component while the location of the spectral peak is related to the length scale. As expected, unstable conditions show much more variance (or turbulence intensity) and larger length scales as compared to stable conditions while neutral conditions are intermediate. The Mann model fits the spectra well in the given frequency range. The model parameters obtained in each stability and wind speed bin are shown in Fig. 4. The parameter $\alpha\varepsilon^{2/3}$ is proportional to the square of the mean wind speed (Syed and Mann, 2024) and hence $\sqrt{\alpha\varepsilon^{2/3}}$ is observed to vary linearly with \bar{u} . Furthermore, $\alpha\varepsilon^{2/3}$ is also related to the variance in the wind speed (Kelly, 2018). Thus, Fig. 4 (a) shows that higher wind speeds are associated with more turbulence. Length scales as large as 180 m are observed in certain unstable conditions while stable conditions usually show length scales lower than 50 m. The anisotropy parameter, Γ , appears to be lower for unstable conditions as compared to stable conditions at low wind speeds. Γ is related to the ratio of the variances in the three wind components and $\Gamma = 0$ when $\sigma_u = \sigma_v = \sigma_w$. Thus, convective conditions show lower values of Γ , as the fluctuations in v and w tend to be stronger than under stable conditions. The variation in Γ decreases with wind speed, probably due to the decrease in the data availability of non-neutral stabilities at higher wind speeds. Note that Γ might also depend on surface roughness and boundary layer depth, which are outside the scope of this study but can be investigated in the future.

Given the importance of vertical shear and veer on fatigue loads (Robertson et al., 2019), we also attempted to replicate the measured variation of mean wind speed and direction with height in the simulation setup. Data from three cup anemometers present at heights 45 m, 105 m and 163 m and two wind vanes present at 45 m and 159 m were used to obtain the mean vertical profiles of the along-wind component and the wind direction: $\bar{u}(z)$ and $\bar{\theta}(z)$. Next, the shear parameter, α_s , was extracted by fitting the power law profile to the measurements:

$$\bar{u}(z) = \bar{u}(z_h) \left(\frac{z}{z_h} \right)^{\alpha_s}, \quad (9)$$

where z_h is the hub-height. Here, the shear above the rotor is assumed to follow the same power profile as measured below the rotor. Note that Eq. 9 provided a good fit to the measurements as the coefficient of determination (R^2) was always greater than 0.92 in all 39 bins. The veer profile, on the other hand, is assumed to be a linear function of height:

$$\bar{\theta}(z) = \beta(z - z_h). \quad (10)$$

β is obtained by fitting the measured profile of $\bar{\theta}(z)$ to Eq. (10). The values of α_s and β for all stability and wind speed bins are shown in Fig. 5. A larger variation with height in the wind speed and direction is observed during stable conditions as

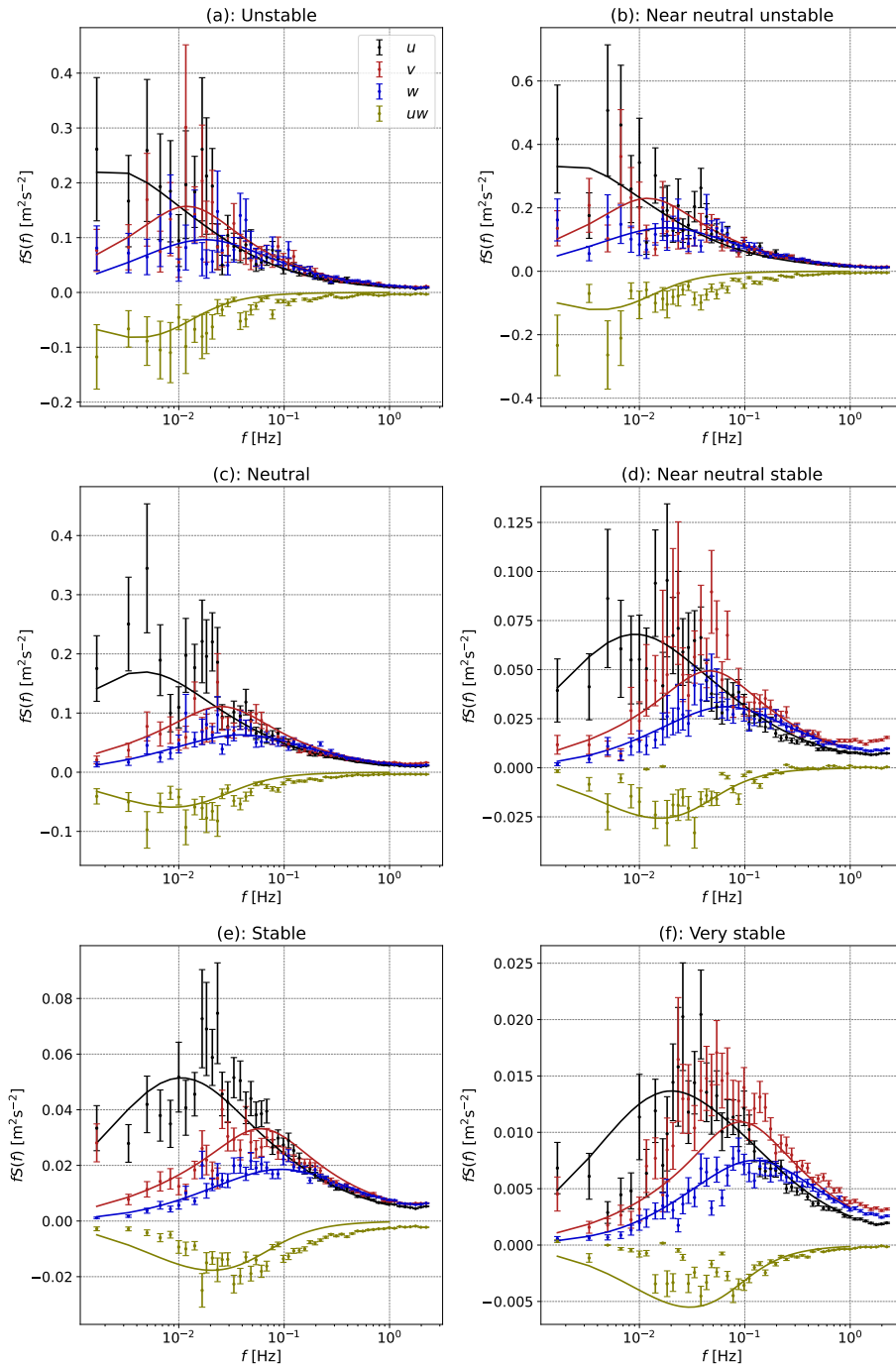


Figure 3. The estimated, pre-multiplied auto-spectra of the u , v and w components and the real part of the uw cross-spectrum under varying stability conditions and a mean wind speed of 9 m s^{-1} .

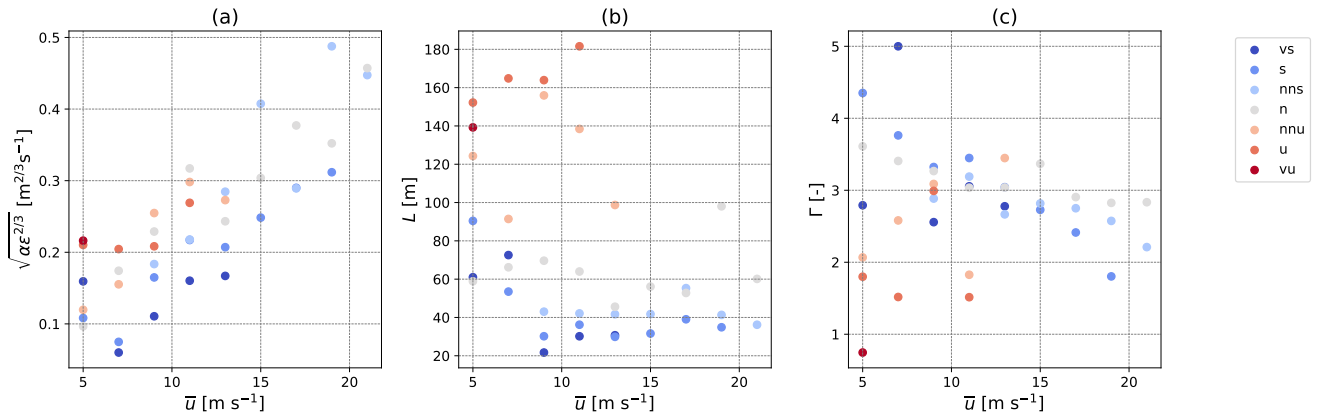


Figure 4. Parameters of the Mann turbulence model as functions of wind speed and stability obtained by fitting the model to the measurements shown in Table 4.

compared to unstable conditions as more turbulent mixing occurs in the latter which leads to more uniformity in the mean wind speed and direction.

200 Thus, the wind box, \mathbf{u}_p , provided to the aeroelastic solver is:

$$\mathbf{u}_p(x, y, z) = \mathbf{u}_m(x, y, z; \alpha \varepsilon^{2/3}, L, \Gamma) + \mathbf{e}_x \bar{u}(z_h) \left(\frac{z}{z_h} \right)^{\alpha_s} + \mathbf{e}_y \bar{u}(z) \tan(\beta(z - z_h)). \quad (11)$$

Here, \mathbf{u}_m is the wind box of turbulent fluctuations with zero mean generated using the Hipersim library (Dimitrov et al., 2024) and \mathbf{e}_x , \mathbf{e}_y are the unit vectors in the along-wind and cross-wind directions.

The turbulence boxes had a temporal resolution of $\Delta t = 0.15$ s, hence the spatial resolution in the along-wind direction, Δx , was $\bar{u}(z_h) \Delta t$. Given a total simulation time of 600 s, the number of grid points in the x -direction were 8094. On the other hand, the vertical and lateral grid resolution was 3.8 m with 64 grid points in either direction. These values were recommended by Liew and Larsen (2022) for the convergence of fatigue load estimates. They also suggest using at least seven turbulence seeds to reach a standard error of less than 5% in the damage equivalent moment on the blades and the tower. Thus, in this study, a total of $7 \times 39 = 273$ simulations were performed.

210 2.4 A note on the aeroelastic solver

The dynamic response of the turbine to a given wind input is simulated in Vestas turbine simulator (VTS). It is a state of the art blade element and momentum theory (BEM) solver derived from Flex5 (Øye, 1996) and based on the mode shape approach using generalised coordinates, masses, stiffnesses and forces. The solver is non-linear as mass, damping and stiffness matrices are recalculated at every time step. It includes tip loss correction, a dynamic stall model and is linked to the controller via a dynamic-link library (DLL). Since the system of equations is not stiff, a very efficient equation solver may be used (Runge-Kutta-Nyström with Cholesky decomposition), with a relatively large constant time step.

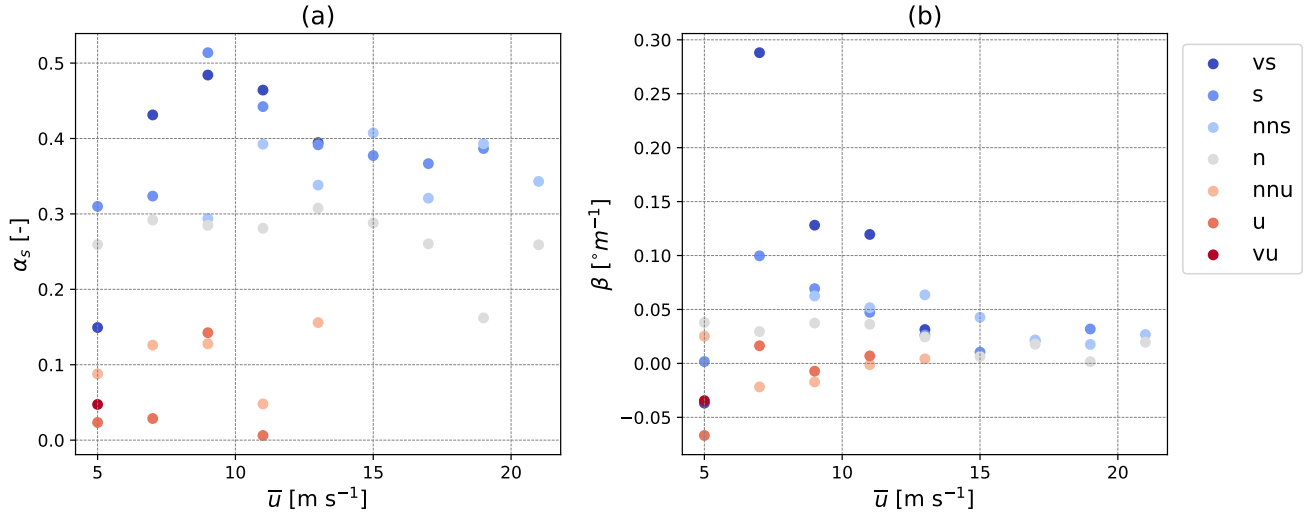


Figure 5. The shear and veer parameters as functions of wind speed and stability obtained by fitting Eq. (9) and (10) to measurements of the vertical profiles of mean wind speed and direction.

2.5 Calculation of fatigue damage and quantification of load differences

Fatigue loads are often characterized by the 1 Hz damage equivalent moment D_M which is based on the Palmgren-Miner damage rule (Burton et al., 2011). Consider $S(t)$ to be the time-dependent bending moment on a particular component. $S(t)$ is first decomposed into a set of single amplitude load ranges, S_i , and the number of cycles for each load range, n_i , are calculated using rain-flow counting (Rychlik, 1987). Moreover, the number of cycles to failure, N_i , at a certain load range are found using the Wöhler S-N curve:

$$N_i = \left(\frac{S_0}{S_i} \right)^m, \quad (12)$$

where m is the Wöhler exponent of the material and S_0 is the y -intercept of the S-N curve. Note that in this study, m is taken as 4 for steel and 10 for glass fibre composite (Slot et al., 2019). The fatigue damage suffered by the material at particular load range is given by:

$$D_i = \frac{n_i}{N_i}. \quad (13)$$

Thus, the total damage according to Palmgren-Miner's rule is:

$$D = \sum D_i = \sum \frac{n_i}{N_i}. \quad (14)$$

230 Finally, D_M is defined as the single amplitude time-varying load applied on the component for n_{eq} cycles such that it results in the same level of accumulated damage as $S(t)$:

$$D_M(S) = \left(\frac{\sum n_i S_i^m}{n_{eq}} \right)^{\frac{1}{m}}, \quad (15)$$

where n_{eq} is 600 which implies that $D_M(S)$ is applied at a frequency of 1 Hz for a duration of 10 minutes.

We inform the reader that all the results presented in the next section have been anonymized. This was achieved by scaling the absolute value of a given quantity (say X) as follows:

$$\tilde{X} = \frac{X}{X_{max} - X_{min}}, \quad (16)$$

where X_{min} and X_{max} were the minimum and maximum values of X respectively. Note that the minimum and maximum are the same for a given load channel and are computed over all stabilities and mean wind speeds. Thus, all loads from a particular channel, irrespective of whether they are obtained from measurements or simulations, are scaled with the same values of X_{min} and X_{max} . As a result, Eq. 16 is a rescaling operation which preserves all qualitative differences between the data points.

The difference between damage equivalent moments in the simulations and measurements are quantified using the z-score, Z , defined as follows:

$$Z = \frac{\bar{A} - \bar{B}}{\sqrt{\sigma_A^2 + \sigma_B^2}}, \quad (17)$$

where,

$$\sigma_A = \frac{\sigma_A}{N_A}. \quad (18)$$

A and B refer to the measured and simulated quantities respectively. N_A is the number of 10 min samples whose values can be found in Table 4 while $N_B = 7$ which corresponds to the number of seeds used in each wind speed and stability bin. Note that when $Z = 1$, \bar{A} and \bar{B} are 1σ apart, where:

$$\sigma = \sqrt{\sigma_A^2 + \sigma_B^2}. \quad (19)$$

250 Furthermore, a positive value indicates that fatigue loads are overestimated in the simulation while a negative value indicates an underestimation.

3 Results

3.1 Effect of atmospheric stability on fatigue loads

The mean damage equivalent moments are computed from the measurements of bending moments at the tower-bottom and blade root and are shown in Fig. 6 and Fig. 8 as functions of wind speed and atmospheric stability. Note that the fore-aft direction is parallel to the mean wind direction and side-side is perpendicular to it, when the yaw-misalignment is zero. Moreover,

Fig. 8 shows the damage equivalent loads on one of the blades although similar results were obtained for all three. Lastly, the error bar indicates the standard deviation of the damage equivalent moment, which is also scaled according to Eq. (16).

Figure 6 (a) shows that the damage equivalent moments at the tower-bottom in the fore-aft direction are significantly influenced by atmospheric stability. For instance, in the 11 m s^{-1} wind speed bin, which is around the turbine's rated wind speed, the fatigue loads are twice as high under unstable and neutral conditions as compared to stable conditions. Averaging over the wind speed bins where data is simultaneously available for unstable, neutral and stable conditions, the damage equivalent moments are 98% and 65% higher under unstable and neutral conditions as compared to stable ones. Moreover, the standard deviation of the damage equivalent moment is also 1.5 times higher under unstable and neutral conditions. On the other hand, the fatigue loads in the side-side direction are not as strongly influenced by stability. The difference in damage equivalent loads in this direction between unstable and stable conditions is 17%. Similar trends are observed in the damage equivalent moments at the tower-top.

As seen in Fig. 3, Fig. 5 and Fig. 7 unstable conditions are generally associated with higher turbulence intensities (TI_u) and larger length scales but lower shear in the vertical wind profile. Thus, the results presented herewith show that tower loads are mainly driven by turbulence and not shear. Indeed, it is expected that a three-bladed rotor will average out the effects of load variation due to the wind profile. The TI_u , on the other hand, quantifies the fluctuations of a given wind components around its mean and consequently, a larger TI_u of the along wind component can lead to larger variations in tower loads. However, the TI_u alone is not a sufficient proxy for fatigue loads. The length scale describes the size of the eddies which drive the turbulent fluctuations. Eddies which are comparable to the rotor diameter cause variations in the dynamic loads while eddies which are smaller in size are filtered out. Indeed, these results are not surprising given the insights from buffeting theory for bridges and towers. Davenport (1964) and Scanlan (1978) showed that to a linear approximation, the buffeting response is proportional to the turbulence intensity. Hence, the TI_u and length scale together are responsible for fatigue loads on the tower being 98% higher under unstable conditions as compared to stable conditions. We also note that the damage equivalent moments under neutral conditions do not necessarily represent the mean loads at any given wind speed. They appear to be closer to unstable conditions than to stable ones. This is because the TI and length scale of the load driving u -component under neutral conditions was closer to the values under unstable conditions.

The damage equivalent loads on the blade in the flapwise direction are impacted to a lower degree by atmospheric stability. At wind speeds below rated (the rated wind speed is approximately 11 m s^{-1}), unstable and neutral conditions cause approximately 20% more fatigue damage as compared to stable conditions. However, at wind speeds above rated, the damage equivalent loads under neutral and stable conditions differ by -2%. These observations are caused by the opposing effects of turbulence and shear, both of which affect the fatigue loads on a wind turbine blade. While unstable conditions are more turbulent, the mean wind speed does not vary appreciably with height. Stable conditions show converse behaviour such that the two drivers of fatigue loads (turbulence and shear) tend to nullify each other in Fig. 8. Moreover, as pitch control is activated at wind speeds above rated, the blade pitches out of the mean wind. Hence the flapwise loads become less sensitive to turbulence and shear becomes relatively dominant. This causes stable conditions to be slightly more detrimental at high wind speeds. In case of the edgewise loads on the blade, as they are mainly driven by gravity, no significant dependence on stability or turbulence is

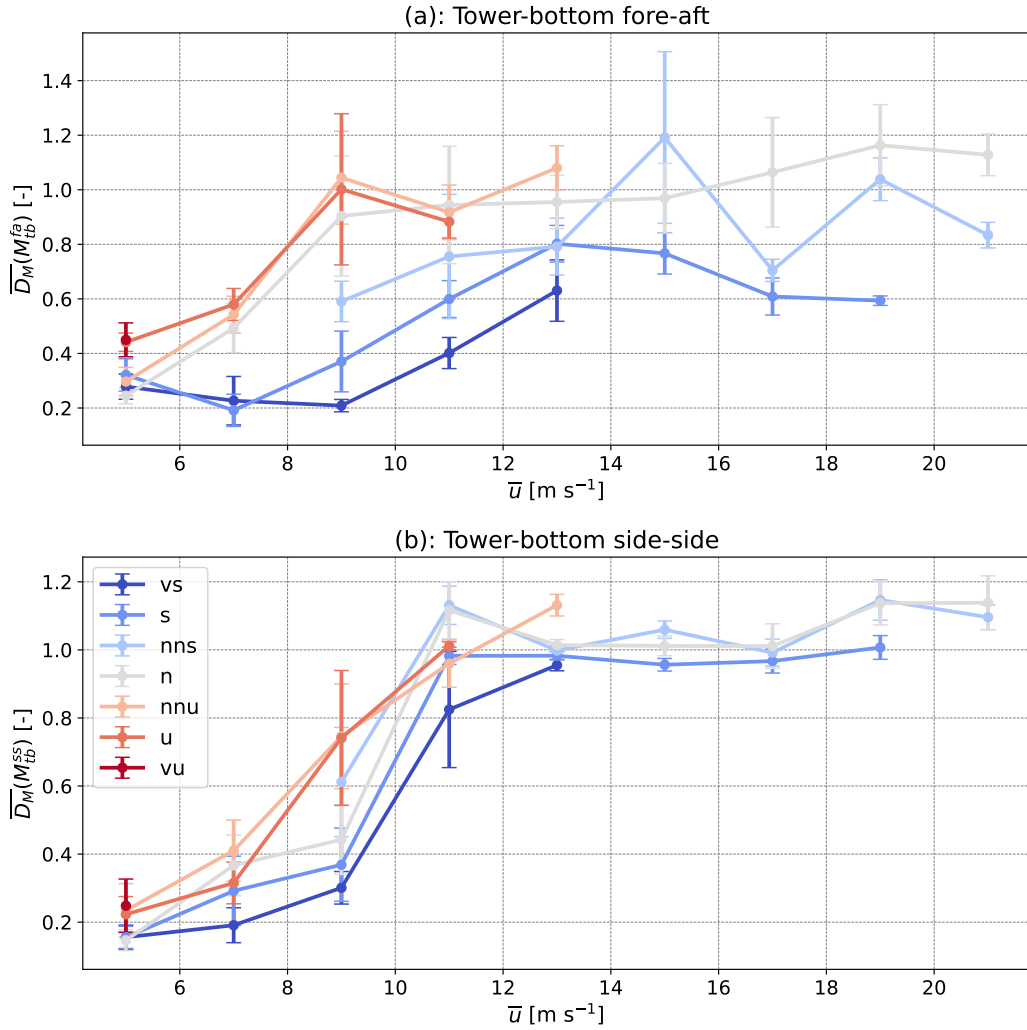


Figure 6. The mean damage equivalent moments on the tower-bottom in the (a) fore-aft and (b) side-side directions as functions of wind speed and stability. Note that the data has been anonymized using Eq. (16) and the error bars indicate the standard deviation. Moreover, (a) and (b) are scaled with different values of X_{min} and X_{max} .

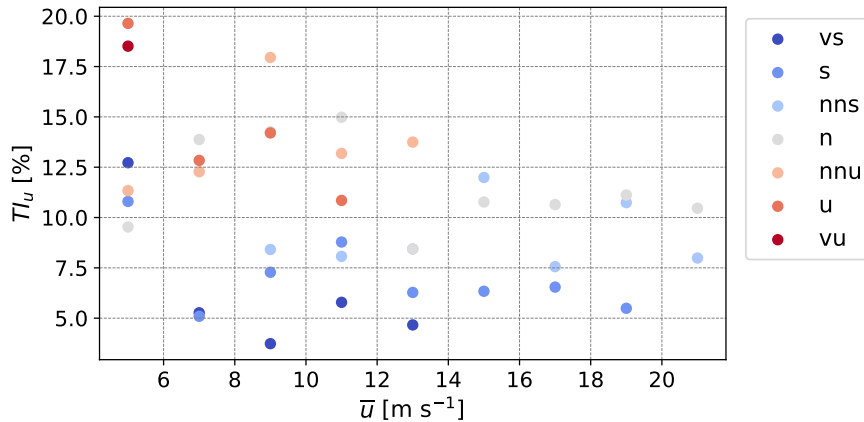


Figure 7. The measured turbulence intensity, TI_u , of the along wind component for each wind speed and stability bin at a height of 155 m. Note that TI_u is computed as the average over all 10-min periods in a given bin.

observed. Thus, we exclude them from the one-to-one comparisons presented in the next section. The side-side loads on the tower bottom are also excluded as they are not only dependent on the inflow but also on a range of different factors such as mass and pitch imbalances on the blades. As it is difficult to accurately quantify these imbalances, they cannot be replicated in a simulation. Hence, attributing any disagreement between measured and simulated loads to differences in the inflow cannot be achieved with a sufficient degree of confidence. On the other hand, the tower fore-aft and blade flapwise loads are significantly more sensitive to the inflow. Thus, our one-to-one comparison is limited to these two load channels.

3.2 One-to-one comparisons

Figure 9 shows the one-to-one comparison of damage equivalent moments on the bottom on the tower in the fore-aft direction while Table 5 presents the z-scores. They indicate that the tower-bottom damage equivalent moments are overestimated when inflow turbulence is modelled with the Mann model and the model parameters are derived by fitting the model to measurements of the auto-spectra. In most instances, the overestimation is fairly low and the loads differ by less than 3σ . However, at certain wind speeds under near-neutral stable, stable, very stable and unstable conditions, the loads are overestimated by more than 5σ . We found that in the bins with near-neutral, stable and very stable conditions, the vertical coherence in the u component predicted by the model was higher than the measurements. Using data from the sonic anemometer at 155 m and the cup anemometer and wind vane at 45 m, we found measurements of $\gamma_{uu}^2(f, 0, 110)$ which were compared to the coherences from the turbulence model. In the frequencies between 10^{-3} Hz to 10^{-2} Hz, the model overestimated the coherence by up to 174%. We suspect that the lateral coherence is also overestimated in these cases. Indeed, Nybø et al. (2021a) showed that coherence in the frequency range between 10^{-3} Hz to 10^{-2} Hz has a significant impact on the fatigue loads experienced by the towers of multi-megawatt turbines. Regarding the case with unstable conditions at 11 m s^{-1} , the measurements of the auto-spectra

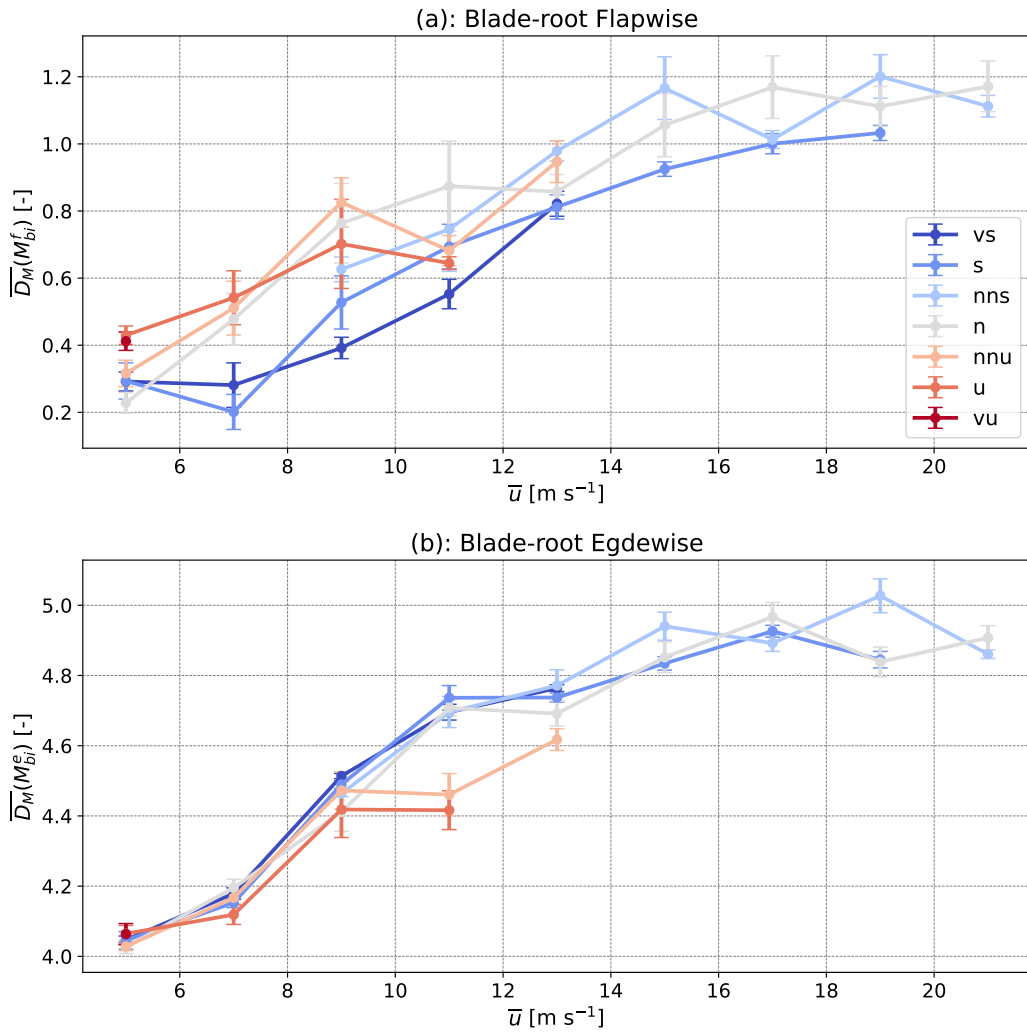


Figure 8. The mean damage equivalent moments at the root of blade 1 in the (a) flapwise and (b) edgewise directions as functions of wind speed at 155 m and stability.

Tower-bottom fore-aft

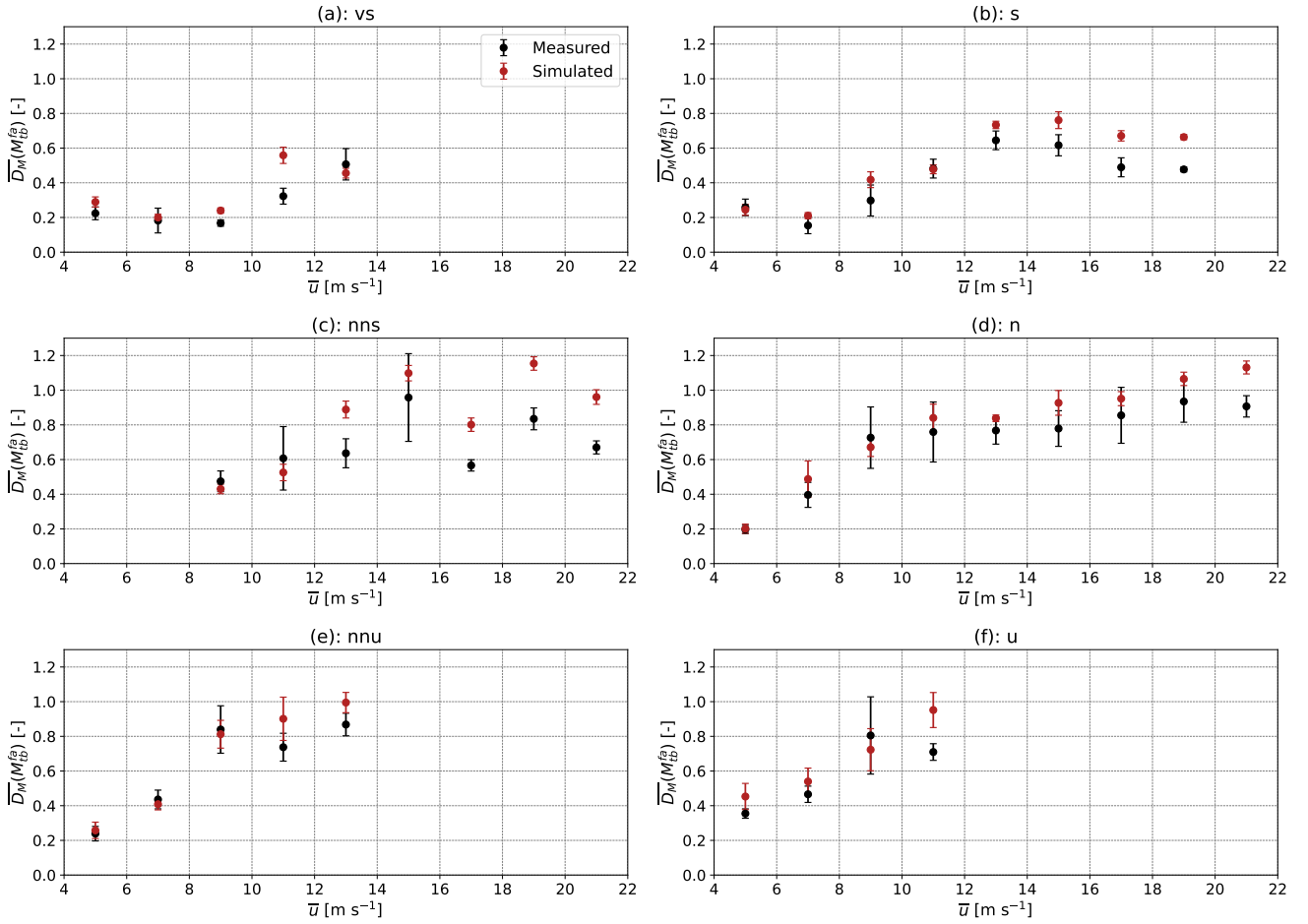


Figure 9. The damage equivalent moment at the bottom of the tower in the fore-aft direction as measured on the prototype (in black) and simulated (in red) in the aeroelastic solver by assimilating the measurements of inflow via spectral fitting with the Mann turbulence model and a power law profile for the vertical variation in the wind speed.

show that the variance in the w component is higher than that in the u and v components at frequencies below 10^{-2} Hz. Such observations have been made before under strongly convective conditions (Syed, 2024) at an altitude of 200 m. However, the Mann model is based on the assumption that $\sigma_u > \sigma_v > \sigma_w$, which is true in case of shear-driven turbulence but invalid for some unstable conditions, especially for altitudes above 100 m. Thus, fitting the model to the observations of the auto-spectra results in a relatively poor fit which we believe causes the large mismatch between simulated and measured loads on the tower (and the blade). The one-to-one comparison of tower-top moments in the fore-aft direction were found to be identical to the tower-bottom.

\bar{u} -bin centre [m s^{-1}]	vs	s	nns	n	nnu	u	vu
5	3.48	-0.56	-	0.30	0.73	3.11	2.41
7	0.66	2.94	-	1.97	-0.92	2.05	-
9	8.62	4.33	-1.67	-0.93	-0.43	-0.68	-
11	9.14	-0.19	-1.21	1.48	2.76	5.37	-
13	-1.10	4.06	7.54	2.72	3.66	-	-
15	-	4.68	1.45	3.51	-	-	-
17	-	7.70	10.71	2.34	-	-	-
19	-	22.18	12.87	3.48	-	-	-
21	-	-	12.52	9.88	-	-	-

Table 5. The z-scores for the damage equivalent moments on the bottom of the tower in the fore-aft direction.

The one-to-one comparison of the damage equivalent moments on the blade in the flapwise direction is shown in Fig. 10 while the z-scores are displayed in Table 6. In this case as well, the difference in loads is often less than 3σ . Although the measured loads in Fig. 10 (d) appear to be higher than the simulated loads at 17 m s^{-1} and higher, the absolute difference being less than 3σ means that the discrepancy can be better explained as a statistical error. However, at mean wind speeds of 9, 11 and 13 m s^{-1} , the damage equivalent moments under very stable and stable conditions are overestimated by more than 11σ . We find that the cause for this discrepancy is the method of assimilating the measured vertical shear into the simulation environment. The power law profile of Eq. (9) was fitted to measurements at and below hub-height and the shear coefficient was assumed to be independent of height. However, under stable conditions, the boundary layer height can be as low as 300 m. Thus, the vertical profile of wind speed between hub-height (163 m) and rotor-top (281 m) is not necessarily the same as between rotor-bottom (45 m) and hub height. By analysing the vertical wind profile measured from a nacelle lidar, we found that the power law overestimates the mean wind speeds above hub-height by 1 to 2 m s^{-1} . Consequently, the blade-root bending moment had a larger range in the simulations and the damage equivalent moments were overestimated.

330 4 Discussion and conclusions

This study aimed to evaluate the accuracy of load simulations in which inflow turbulence is prescribed using the Mann model (Mann, 1994), by comparing the resulting fatigue loads with measurements from a 15 MW wind turbine prototype. Such measurements are rarely available or published, making this analysis a valuable contribution. In addition, the study provides insights into the influence of atmospheric stability on the fatigue damage accumulated by turbine towers and blades. The following conclusions can be drawn:

1. Analysis of the 1 Hz damage equivalent moment measured on the prototype demonstrated that atmospheric stability has a substantial effect on tower fatigue loads, while its impact on blade loads is less pronounced. These findings are consistent with Sathe et al. (2013), who additionally showed that the IEC recommendation can lead to estimations of

Blade-root Flapwise

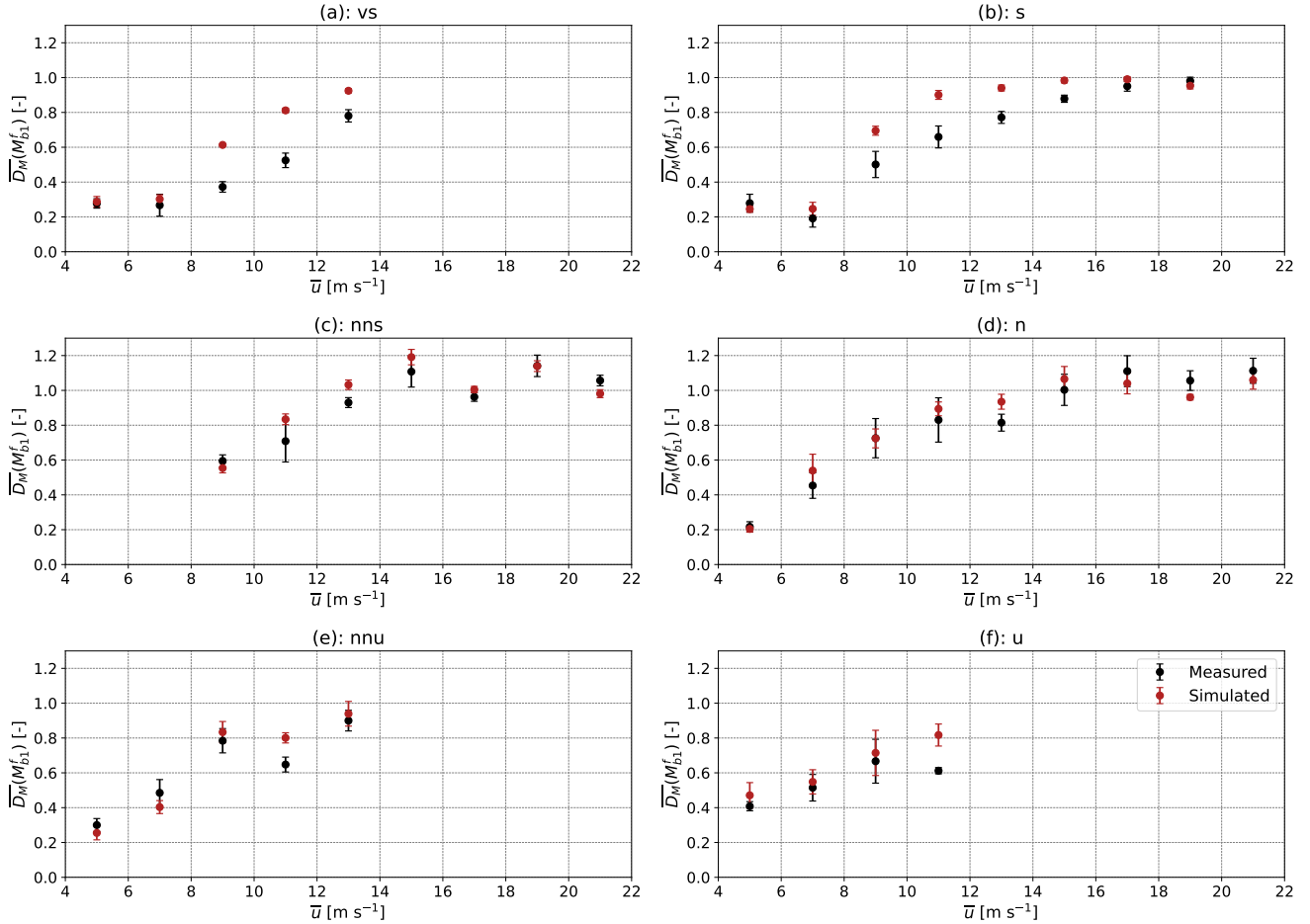


Figure 10. The damage equivalent moment at the root of the blade in the flapwise direction as measured on the prototype (in black) and simulated (in red) in the aeroelastic solver by assimilating the measurements of inflow via spectral fitting with the Mann turbulence model and a power law profile for the vertical variation in the wind speed.

\bar{u} -bin centre [m s^{-1}]	vs	s	nns	n	nnu	u	vu
5	0.63	-1.41	-	0.75	-2.01	2.05	0.07
7	1.46	2.37	-	1.99	-2.01	0.79	-
9	23.24	9.35	-2.31	-0.03	1.34	0.60	-
11	16.22	11.32	2.87	1.71	6.94	8.02	-
13	7.86	11.65	7.29	5.39	1.09	-	-
15	-	10.60	2.23	1.58	-	-	-
17	-	3.36	2.95	-2.28	-	-	-
19	-	-2.33	-0.07	-2.50	-	-	-
21	-	-	-2.66	-1.86	-	-	-

Table 6. The z-scores for the damage equivalent moments on the root of the blade in the flapwise direction.

lifetime fatigue damage that are up to 96% higher than those obtained when accounting for the joint distribution of mean
340 wind speed and stability at a given site. Our results therefore reinforce the case for including atmospheric stability in
fatigue load assessments as a means of reducing over-design and associated costs. The alternative to the IEC approach is
a site-specific fatigue load estimation, but current implementations typically assume neutral conditions to be dominant.
While this assumption holds for many onshore sites, it may not be valid offshore or in coastal environments. Insufficient
345 consideration of atmospheric stability at such sites could lead to underestimation of lifetime fatigue damage on wind
turbine towers.

2. A one-to-one comparison of measured and simulated fatigue loads, where the inflow was assimilated by fitting turbulence
spectra to the Mann model, showed good overall agreement. The innovative aspect of this work, is that simulations used
the same controller as the prototype, ensuring a more realistic comparison. The damage equivalent moments from simu-
350 lations were generally higher than measurements, but the margin of overestimation was small enough to be acceptable for
engineering purposes. Improved inflow assimilation, for example through turbulence boxes constrained by nacelle lidar
measurements, could further reduce these discrepancies. Alternatively, these differences could stem from uncertainties
in the aerodynamic or structural properties of the simulated turbine, which are outside the scope of this study. Overall,
we conclude that the Mann turbulence model is suitable for aeroelastic simulations of multi-megawatt wind turbines.
355 Known limitations of the model, such as its assumption of Gaussian small-scale statistics and homogeneous turbulence,
do not appear to significantly affect fatigue load predictions for tower and blade loads of a stand-alone turbine. Although
the model was originally formulated for surface-layer, shear-driven turbulence, it successfully captures the key turbu-
lence characteristics (length scale, turbulence intensity, and coherence) most relevant for turbine loads. However, it is
uncertain whether these results can be extrapolated to yaw and tilt moments on the main shaft.

3. In some one-to-one comparisons, significant overestimations of tower and blade fatigue loads were observed under cer-
360 tain stable conditions. For the tower, this was attributed to the Mann model overestimating vertical coherence in the

along-wind component, while blade loads were overestimated due to an inaccurate shear profile. The physical mechanisms leading to the low measured coherence remain unclear, but future work could investigate whether the model of Chougule et al. (2018) is more accurate under some stable conditions. Furthermore, better representation of the shear profile above hub height in the simulations could be achieved through nacelle- or ground-based lidars capable of measuring up to the rotor top, or by adopting an extended boundary layer wind profile (Gryning et al., 2007). Accurate assimilation of the shear profile can also be important for power curve verification (Wharton and Lundquist, 2012).

Subsequent research can be directed towards conducting one-to-one comparisons for wind turbines operating within wind farms. As the Mann model is assumed to describe atmospheric turbulence in time-domain simulations of wake meandering (Larsen et al., 2008), such studies would help determine whether the model remains valid in this context or extended formulations (Syed and Mann, 2024) are preferable. In addition, one-to-one comparisons could be performed for floating wind turbines, with inflow characterized using the Mann model, the Kaimal model (Kaimal et al., 1972) with exponential coherence (Davenport, 1961), or Large Eddy Simulations (Doubrawa et al., 2024).

Data availability. For reasons of confidentiality, the data analysed in this study is not publicly available.

Author contributions. AP and JM conceptualized the research question. AP performed the analysis with assistance from JM, MS, KZ and KR. AP also wrote the first version of the manuscript which was subsequently reviewed and edited by all co-authors.

Competing interests. JM is a chief editor of the *Wind Energy Science* journal. KZ and KR are employed by Vestas Wind System A/S. The authors have no other competing interests to declare.

Acknowledgements. This project has received funding from the European Union's Horizon Europe research and innovation program under the Marie Skłodowska-Curie grant agreement No 101119550 (AptWind) and the FLOW project (Atmospheric Flow, Load and pOwer for Wind energy) within the EU Horizon Europe programme (grant no. 101084205). The authors would like to thank Stefan Wolff from Vestas for assistance in running and debugging the aeroelastic simulations. We are also grateful to Ahmad Khamas from Vestas for helping us navigate and use the measurement data from the wind turbine prototype.

References

- Bartlett, M. S.: Smoothing periodograms from time-series with continuous spectra [13], *Nature*, 161, 686–687, 385 <https://doi.org/10.1038/161686a0>, 1948.
- Brown, K., Bortolotti, P., Branlard, E., Chetan, M., Dana, S., deVelder, N., Doubrawa, P., Hamilton, N., Ivanov, H., Jonkman, J., Kelley, C., and Zalkind, D.: One-to-one aeroservoelastic validation of operational loads and performance of a 2.8 MW wind turbine model in OpenFAST, *Wind Energy Science*, 9, 1791–1810, <https://doi.org/10.5194/WES-9-1791-2024>, 2024.
- Burton, T., Jenkins, N., Sharpe, D., and Bossanyi, E.: *Wind Energy Handbook*, John Wiley & Sons, ISBN 9780471489979, 390 <https://doi.org/10.1002/0470846062>, 2011.
- Chougule, A., Mann, J., Kelly, M., and Larsen, G. C.: Simplification and Validation of a Spectral-Tensor Model for Turbulence Including Atmospheric Stability, *Boundary-Layer Meteorology*, 167, 371–397, <https://doi.org/10.1007/S10546-018-0332-Z>, 2018.
- Davenport, A. G.: The spectrum of horizontal gustiness near the ground in high winds, *Quarterly Journal of the Royal Meteorological Society*, 87, 194–211, <https://doi.org/10.1002/qj.49708737208>, 1961.
- 395 Davenport, A. G.: THE BUFFETING OF LARGE SUPERFICIAL STRUCTURES BY ATMOSPHERIC TURBULENCE, *Annals of the New York Academy of Sciences*, 116, 135–160, <https://doi.org/https://doi.org/10.1111/j.1749-6632.1964.tb33943.x>, 1964.
- de Maré, M. and Mann, J.: On the Space-Time Structure of Sheared Turbulence, *Boundary-Layer Meteorology*, 160, 453–474, <https://doi.org/10.1007/S10546-016-0143-Z>, 2016.
- Dimitrov, N. and Natarajan, A.: Application of simulated lidar scanning patterns to constrained Gaussian turbulence fields for load validation, 400 *Wind Energy*, 20, 79–95, <https://doi.org/https://doi.org/10.1002/we.1992>, 2017.
- Dimitrov, N., Pedersen, M., and Ásta Hannesdóttir: An open-source Python-based tool for Mann turbulence generation with constraints and non-Gaussian capabilities, *Journal of Physics: Conference Series*, 2767, 052 058, <https://doi.org/10.1088/1742-6596/2767/5/052058>, 2024.
- Doubrawa, P., Rybchuk, A., Friedrich, J., Zalkind, D., Bortolotti, P., Letizia, S., and Thedin, R.: Validation of new and existing methods 405 for time-domain simulations of turbulence and loads, *Journal of Physics: Conference Series*, 2767, 052 057, <https://doi.org/10.1088/1742-6596/2767/5/052057>, 2024.
- Gryning, S. E., Batchvarova, E., Brümmner, B., Jørgensen, H., and Larsen, S.: On the extension of the wind profile over homogeneous terrain beyond the surface boundary layer, *Boundary-Layer Meteorology*, 124, 251–268, <https://doi.org/10.1007/S10546-007-9166-9>, 2007.
- Guo, F., Peña, A., and Gao, Z.: Effects of turbulence inhomogeneity and atmosphere stability on the aeroelastic response of the IEA 22 MW 410 wind turbine, *Renewable Energy*, 256, 124 384, <https://doi.org/https://doi.org/10.1016/j.renene.2025.124384>, 2026.
- IEC: IEC 61400-1 Ed4: Wind turbines - Part 1: Design requirements, Tech. rep., International Electrotechnical Commission, Geneva, Switzerland, 2019.
- Jonkman, B. J. and Buhl, Jr., M. L.: *TurbSim User’s Guide*, Tech. rep., National Renewable Energy Laboratory (NREL), <https://doi.org/10.2172/891594>, 2006.
- 415 Kaimal, J. C., Wyngaard, J. C., Izumi, Y., and Coté, O. R.: Spectral characteristics of surface-layer turbulence, *Quarterly Journal of the Royal Meteorological Society*, 98, 563–589, <https://doi.org/10.1002/QJ.49709841707>, 1972.
- Kelly, M.: From standard wind measurements to spectral characterization: turbulence length scale and distribution, *Wind Energy Science*, 3, 533–543, <https://doi.org/10.5194/wes-3-533-2018>, 2018.

- Larsen, G. C., Madsen, H. A., Thomsen, K., and Larsen, T. J.: Wake meandering: a pragmatic approach, *Wind Energy*, 11, 377–395, <https://doi.org/https://doi.org/10.1002/we.267>, 2008.
- 420 Liew, J. and Larsen, G. C.: How does the quantity, resolution, and scaling of turbulence boxes affect aeroelastic simulation convergence?, *Journal of Physics: Conference Series*, 2265, 032 049, <https://doi.org/10.1088/1742-6596/2265/3/032049>, 2022.
- Mann, J.: The spatial structure of neutral atmospheric surface-layer turbulence, *Journal of Fluid Mechanics*, 273, 141–168, <https://doi.org/10.1017/S0022112094001886>, 1994.
- 425 Mann, J.: Wind field simulation, *Probabilistic Engineering Mechanics*, 13, 269–282, [https://doi.org/10.1016/S0266-8920\(97\)00036-2](https://doi.org/10.1016/S0266-8920(97)00036-2), 1998.
- Nybø, A., Nielsen, F. G., and Godvik, M.: Quasi-static response of a bottom-fixed wind turbine subject to various incident wind fields, *Wind Energy*, 24, 1482–1500, <https://doi.org/10.1002/WE.2642>, 2021a.
- Nybø, A., Nielsen, F. G., and Godvik, M.: Analysis of turbulence models fitted to site, and their impact on the response of a bottom-fixed wind turbine, *Journal of Physics: Conference Series*, 2018, 012 028, <https://doi.org/10.1088/1742-6596/2018/1/012028>, 2021b.
- 430 Obukhov, A. M.: Some specific features of atmospheric turbulence, *Journal of Geophysical Research (1896-1977)*, 67, 3011–3014, <https://doi.org/https://doi.org/10.1029/JZ067i008p03011>, 1962.
- Peña, A.: Østerild: A natural laboratory for atmospheric turbulence, *Journal of Renewable and Sustainable Energy*, 11, <https://doi.org/10.1063/1.5121486>, 2019.
- Rinker, J. M.: Impact of rotor size on aeroelastic uncertainty with lidar-constrained turbulence, *Journal of Physics: Conference Series*, 2265, 032 011, <https://doi.org/10.1088/1742-6596/2265/3/032011>, 2022.
- 435 Robertson, A. N., Shaler, K., Sethuraman, L., and Jonkman, J.: Sensitivity analysis of the effect of wind characteristics and turbine properties on wind turbine loads, *Wind Energy Science*, 4, 479–513, <https://doi.org/10.5194/wes-4-479-2019>, 2019.
- Rychlik, I.: A new definition of the rainflow cycle counting method, *International Journal of Fatigue*, 9, 119–121, [https://doi.org/10.1016/0142-1123\(87\)90054-5](https://doi.org/10.1016/0142-1123(87)90054-5), 1987.
- 440 Sathe, A., Mann, J., Barlas, T., Bierbooms, W. A., and Bussel, G. J. V.: Influence of atmospheric stability on wind turbine loads, *Wind Energy*, 16, 1013–1032, <https://doi.org/10.1002/WE.1528>, 2013.
- Scanlan, R.: The action of flexible bridges under wind, II: Buffeting theory, *Journal of Sound and Vibration*, 60, 201–211, [https://doi.org/https://doi.org/10.1016/S0022-460X\(78\)80029-7](https://doi.org/https://doi.org/10.1016/S0022-460X(78)80029-7), 1978.
- Schotanus, P., Nieuwstadt, F. T., and Bruin, H. A. D.: Temperature measurement with a sonic anemometer and its application to heat and moisture fluxes, *Boundary-Layer Meteorology*, 26, 81–93, <https://doi.org/10.1007/BF00164332>, 1983.
- 445 Slot, R. M., Sørensen, J. D., Svenningsen, L., Moser, W., and Thøgersen, M. L.: Effective turbulence and its implications in wind turbine fatigue assessment, *Wind Energy*, 22, 1699–1715, <https://doi.org/10.1002/WE.2397>;REQUESTEDJOURNAL:JOURNAL:10991824;WGROU:STRING:PUBLICATION, 2019.
- Syed, A.: Marine Atmospheric Turbulence: A wind energy perspective, Ph.D. thesis, DTU Wind and Energy Systems, 2024.
- 450 Syed, A. H. and Mann, J.: A Model for Low-Frequency, Anisotropic Wind Fluctuations and Coherences in the Marine Atmosphere, *Boundary-Layer Meteorology*, 190, 1–37, <https://doi.org/10.1007/s10546-023-00850-w>, 2024.
- Veers, P., Bottasso, C. L., Manuel, L., Naughton, J., Pao, L., Paquette, J., Robertson, A., Robinson, M., Ananthan, S., Barlas, T., Bianchini, A., Bredmose, H., Horcas, S. G., Keller, J., Madsen, H. A., Manwell, J., Moriarty, P., Nolet, S., and Rinker, J.: Grand challenges in the design, manufacture, and operation of future wind turbine systems, *Wind Energy Science*, 8, 1071–1131, [https://doi.org/10.5194/WES-8-](https://doi.org/10.5194/WES-8-1071-2023)
- 455 1071-2023, 2023.

Wharton, S. and Lundquist, J. K.: Atmospheric stability affects wind turbine power collection, *Environmental Research Letters*, 7, 014 005, <https://doi.org/10.1088/1748-9326/7/1/014005>, 2012.

Wyngaard, J. C.: *Turbulence in the Atmosphere*, Cambridge University Press, 2010.

460 Øye, S.: Flex4 Simulation of Wind Turbine Dynamics,” Proceedings of the 28th IEA Meeting of Experts Concerning State of the Art of Aeroelastic Codes for Wind Turbine Calculations, Tech. rep., International Energy Agency, 1996.